

— *Spacious* —
LIVING AREAS DINING

VISTA

HOMES

3, 4, 5
BEDROOM

— *Wide Frontage* —



VISTA

HOMES

An extended living and dining room with a balcony means that the pride of a Vista Home is its view. Wide living hall frontage and bedrooms maximizes the view you wake up every morning to with adoration.

Unleash your creativity with selected 4 metre high-ceiling units. You can either install full height storage display, convert it into a vertical library or install signature long pendant light or chandeliers to embrace a touch of luxury.

All bedrooms are crafted with space in mind to accommodate Queen size beds. A luxury everyone craves for.



PES | Private Enclosed Space

AC LEDGE | Aircon Ledge

DB | Distribution Board

ST | Store



VISTA

3 Bedroom

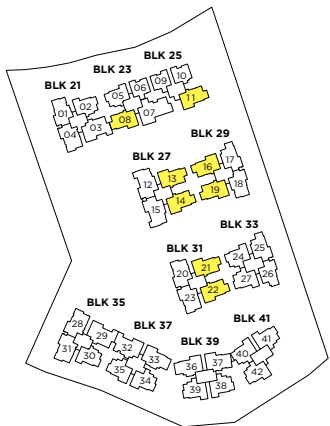
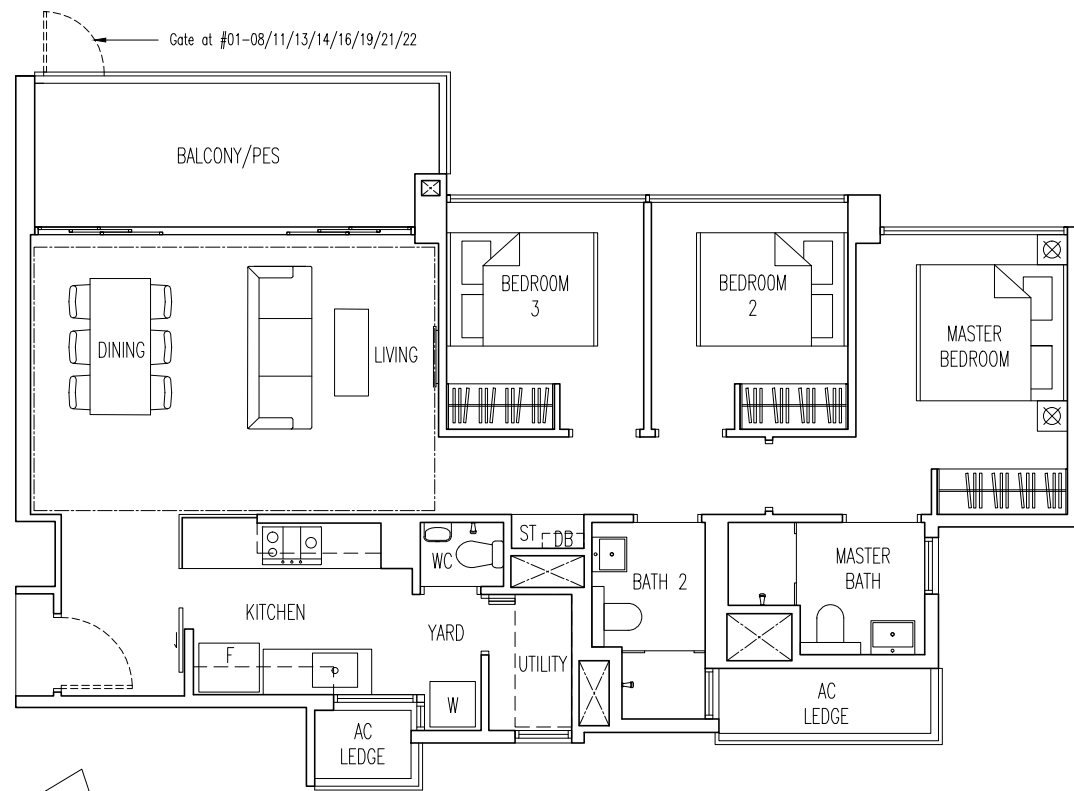
B6

99 sqm / 1066 sqft

- #01-08 to #16-08
- #01-11 to #16-11*
- #01-13 to #15-13
- #01-14 to #16-14*
- #01-16 to #16-16*
- #01-19 to #16-19
- #01-21 to #16-21
- #01-22 to #15-22*

* Mirror Image

--- Line denotes high ceiling at #16-08/11/14/16/19/21



0 1 3 5M

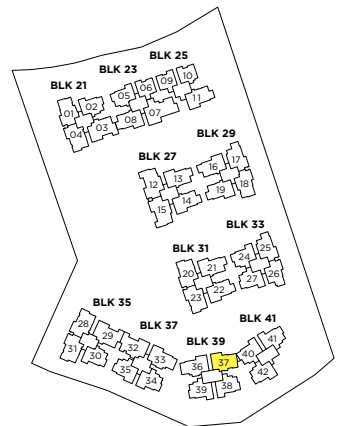
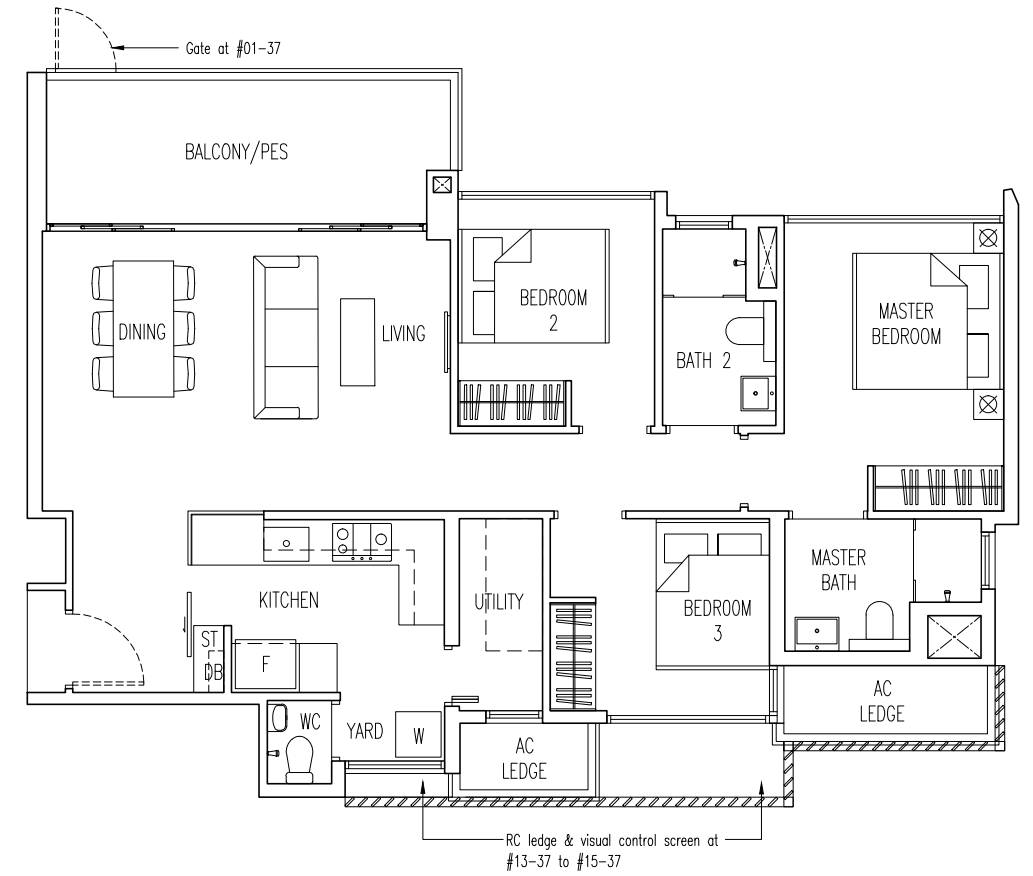
VISTA

3 Bedroom

B7

99 sqm / 1066 sqft

- #01-37 to #15-37



0 1 3 5M

VISTA
3 + Universal

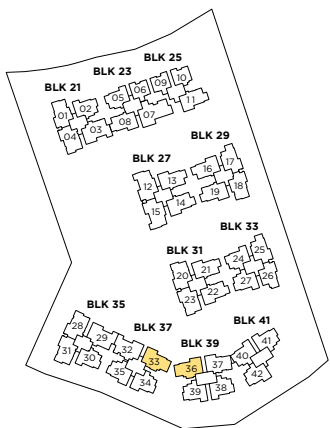
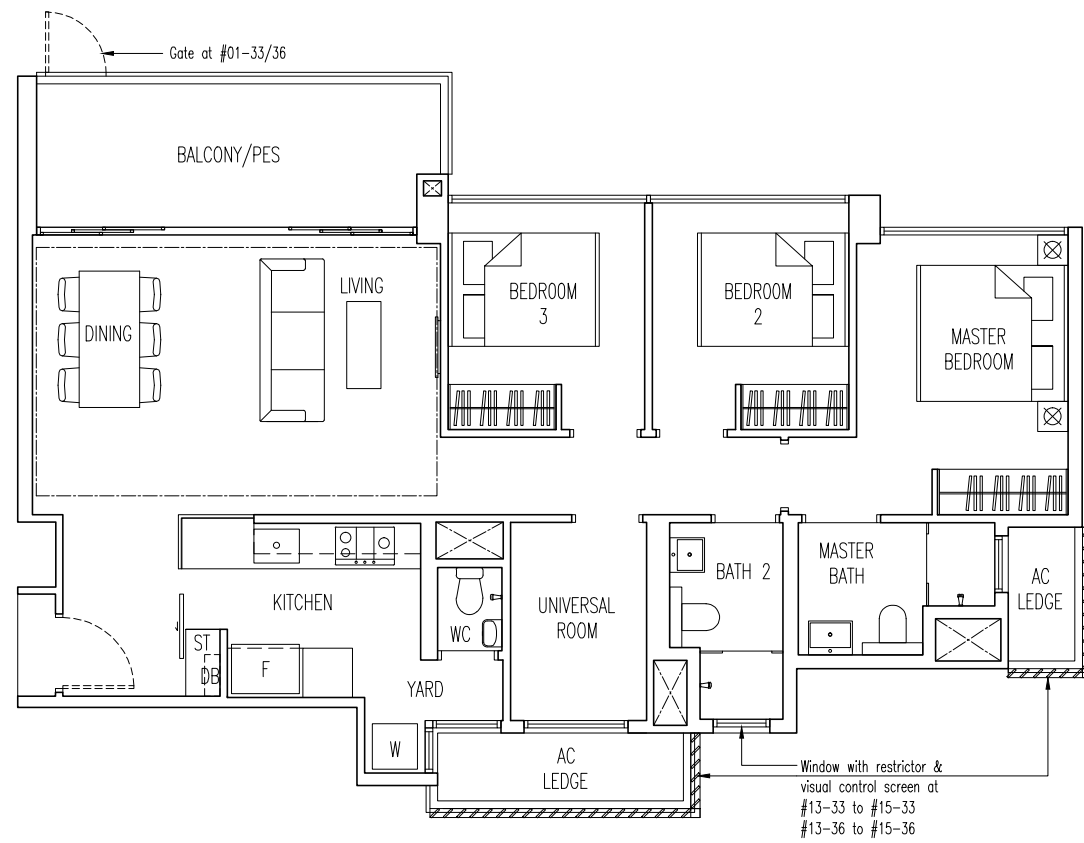
C2

103 sqm / 1109 sqft

#01-33 to #15-33
#01-36 to #15-36*

* Mirror Image

--- Line denotes
high ceiling at #15-36



0 1 3 5M

VISTA
4 Bedroom

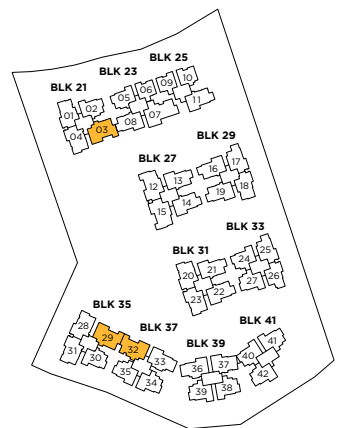
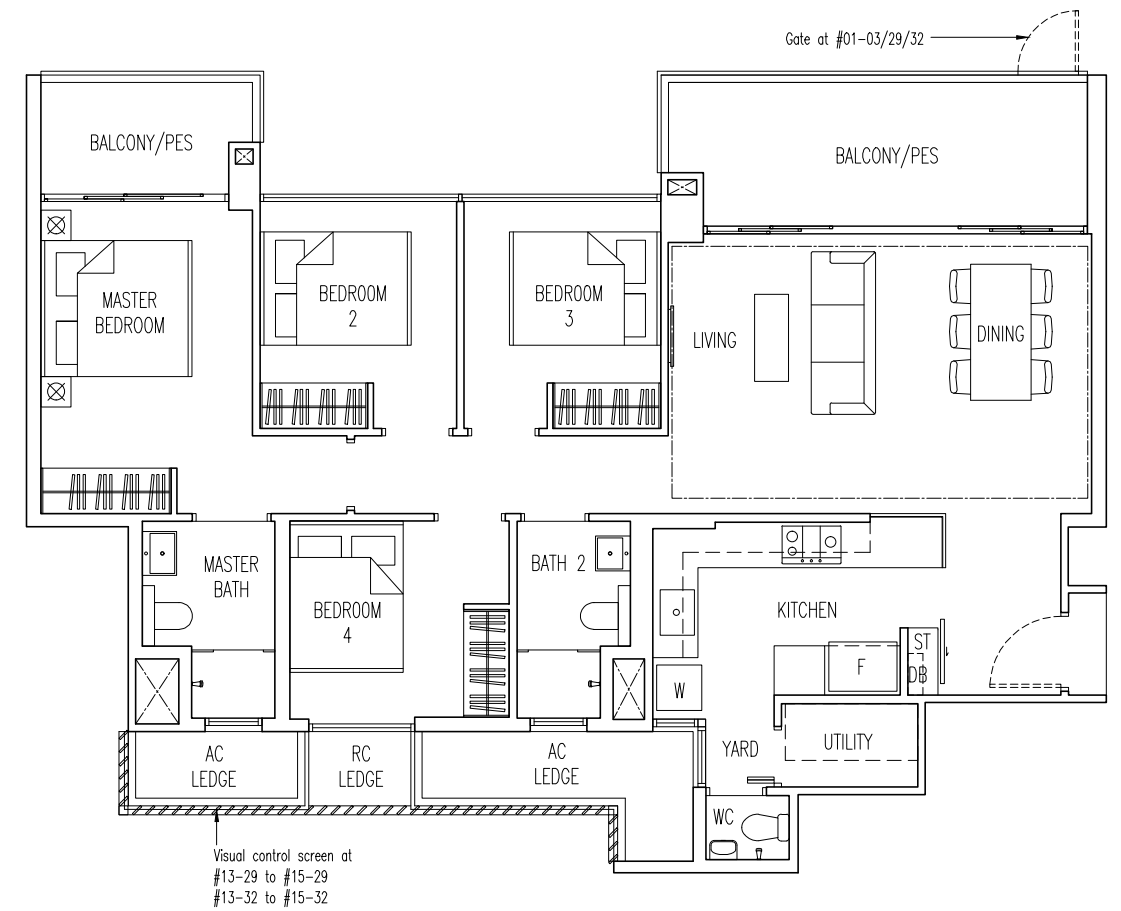
D2

118 sqm / 1270 sqft

#01-03 to #16-03
#01-29 to #15-29*
#01-32 to #15-32

* Mirror Image

--- Line denotes
high ceiling at #16-03, #15-32



0 1 3 5M

VISTA

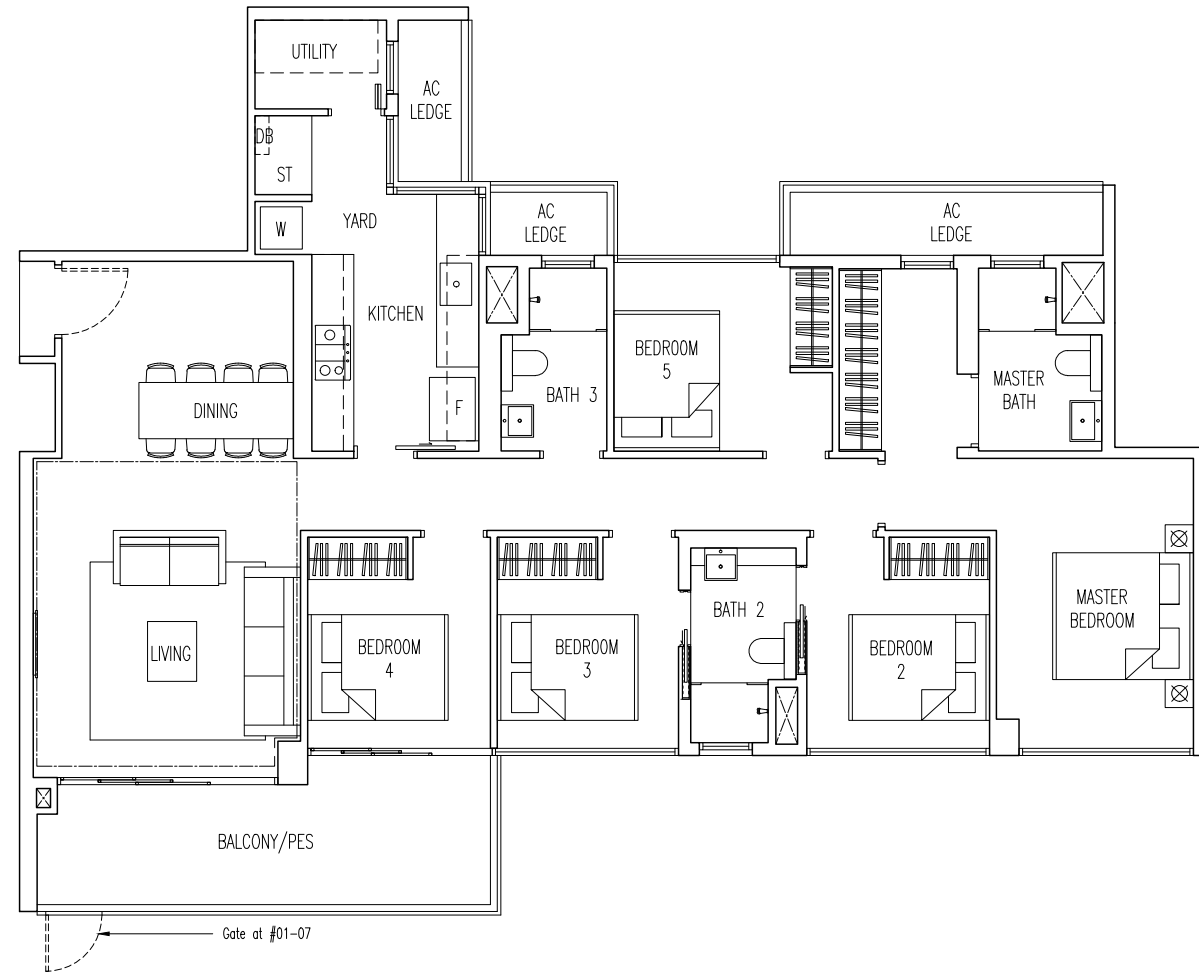
5 Bedroom

E1

144 sqm / 1550 sqft

#01-07 to #16-07

Line denotes high ceiling at #16-07



NOTES

