

# 1-Bedroom

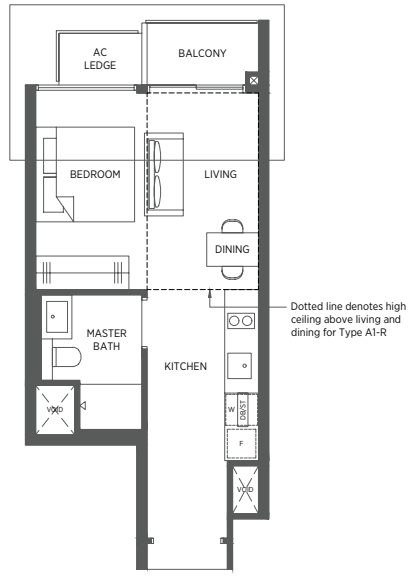
## TYPE A1 TYPE A1-R

39 sq m | 420 sq ft 48 sq m | 517 sq ft

#02-06 to #17-06  
#02-15 to #17-15  
#02-20 to #17-20\*  
#02-53 to #17-53\*  
#02-66 to #17-66  
#02-75 to #17-75

#18-06  
#18-15  
#18-20\*  
#18-53\*  
#18-66  
#18-75

Incl. of 9 sq m | 97 sq ft of void area (high ceiling) above living & dining



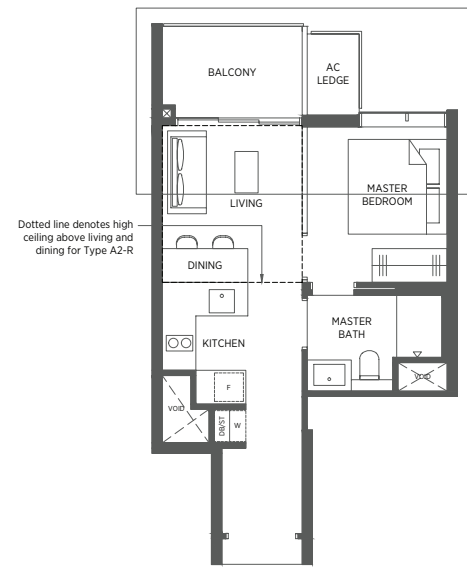
## TYPE A2 TYPE A2-R

42 sq m | 452 sq ft 51 sq m | 549 sq ft

#02-05 to #17-05  
#02-14 to #17-14  
#02-21 to #17-21\*  
#02-54 to #17-54\*  
#02-65 to #17-65  
#02-74 to #17-74

#18-05  
#18-14  
#18-21\*  
#18-54\*  
#18-65  
#18-74

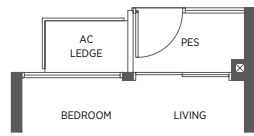
Incl. of 9 sq m | 97 sq ft of void area (high ceiling) above living & dining



## TYPE A1-P

39 sq m | 420 sq ft

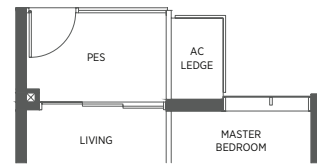
#01-06  
#01-15  
#01-20\*  
#01-53\*  
#01-66  
#01-75



## TYPE A2-P

42 sq m | 452 sq ft

#01-05  
#01-14  
#01-21\*  
#01-54\*  
#01-65  
#01-74



# 1-Bedroom + Study

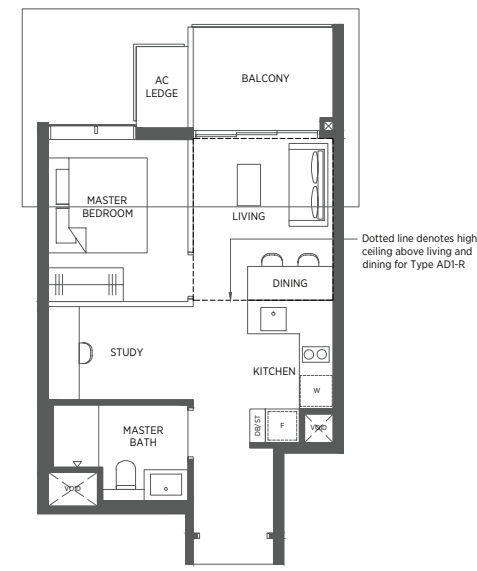
## TYPE AD1 TYPE AD1-R

48 sq m | 517 sq ft 57 sq m | 614 sq ft

#02-52 to #17-52\*  
#02-67 to #17-67  
#02-76 to #17-76

#18-52\*  
#18-67  
#18-76

Incl. of 9 sq m | 97 sq ft of void area (high ceiling) above living & dining



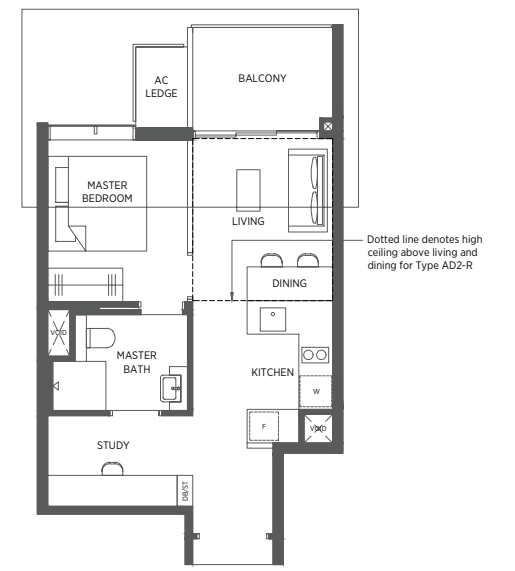
## TYPE AD2 TYPE AD2-R

49 sq m | 527 sq ft 58 sq m | 624 sq ft

#02-07 to #17-07  
#02-16 to #17-16  
#02-19 to #17-19\*

#18-07  
#18-16  
#18-19\*

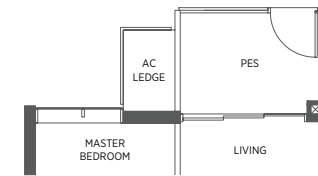
Incl. of 9 sq m | 97 sq ft of void area (high ceiling) above living & dining



## TYPE AD1-P

48 sq m | 517 sq ft

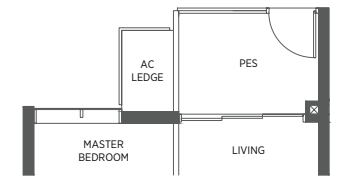
#01-52\*  
#01-67  
#01-76



## TYPE AD2-P

49 sq m | 527 sq ft

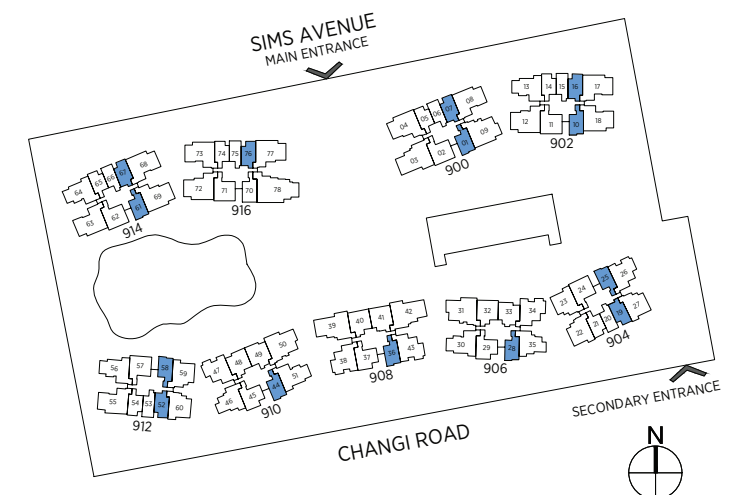
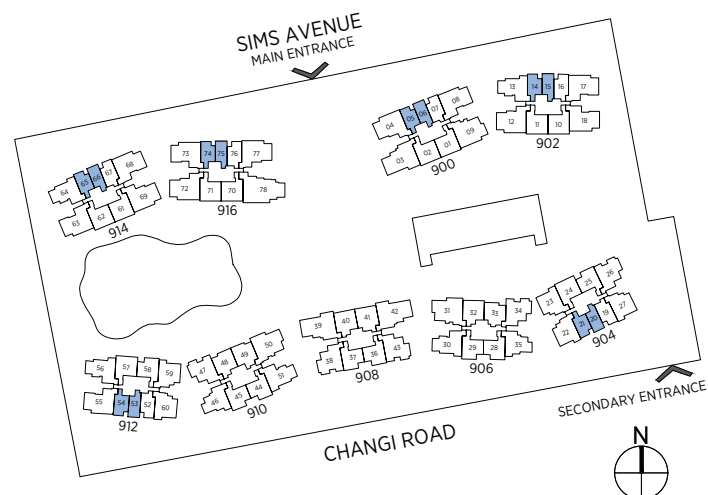
#01-07  
#01-16



## TYPE AD3-P

49 sq m | 527 sq ft

#01-01  
#01-10  
#01-25\*  
#01-28  
#01-36  
#01-44  
#01-58\*  
#01-61



\* Denotes mirror image

Area includes a/c ledge, balcony and void area (high ceiling). The plans are subject to change as may be required or approved by the relevant authorities. Areas are approximate measurements only and are subject to final survey. Plans are not drawn to scale and do not form part of the contract.

\* Denotes mirror image

Area includes a/c ledge, balcony and void area (high ceiling). The plans are subject to change as may be required or approved by the relevant authorities. Areas are approximate measurements only and are subject to final survey. Plans are not drawn to scale and do not form part of the contract.

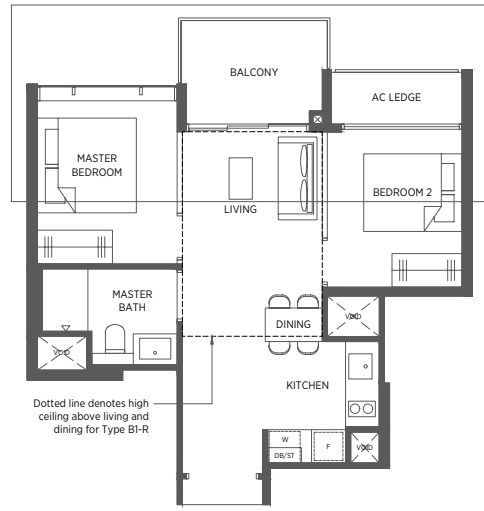
## 2-Bedroom

### TYPE B1 TYPE B1-R

54 sq m | 581 sq ft 65 sq m | 700 sq ft

#02-33 to #17-33 #18-33

Incl. of 11 sq m | 118 sq ft of void area (high ceiling) above living & dining

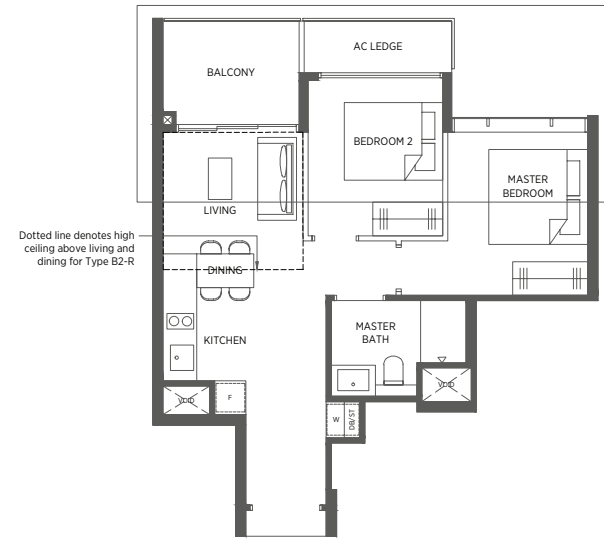


### TYPE B2 TYPE B2-R

56 sq m | 603 sq ft 64 sq m | 689 sq ft

#02-32 to #17-32 #18-32

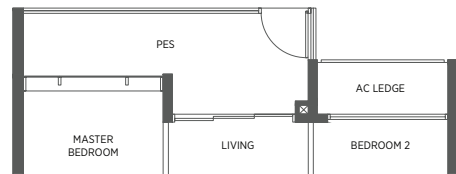
Incl. of 8 sq m | 86 sq ft of void area (high ceiling) above living & dining



### TYPE B1-P

58 sq m | 624 sq ft

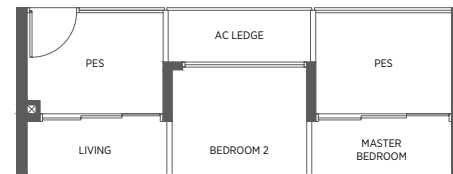
#01-33



### TYPE B2-P

61 sq m | 657 sq ft

#01-32



## 2-Bedroom

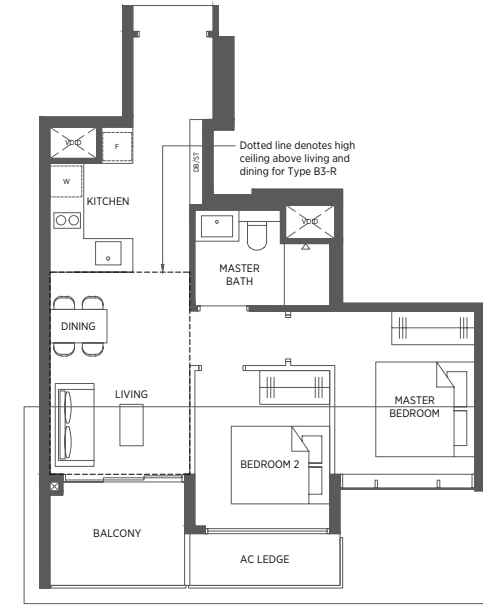
### TYPE B3 TYPE B3-R

59 sq m | 635 sq ft 70 sq m | 753 sq ft

#02-28 to #17-28\*  
#02-29 to #17-29  
#02-36 to #17-36\*  
#02-37 to #17-37  
#02-44 to #17-44\*  
#02-45 to #17-45

#18-28\*  
#18-29  
#18-36\*  
#18-37  
#18-44\*  
#18-45

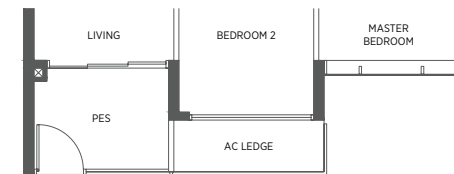
Incl. of 11 sq m | 118 sq ft of void area (high ceiling) above living & dining



### TYPE B3-P

59 sq m | 635 sq ft

#01-29  
#01-37  
#01-45



### TYPE B4 TYPE B4-R TYPE B4-R1

59 sq m | 635 sq ft 69 sq m | 743 sq ft 70 sq m | 753 sq ft

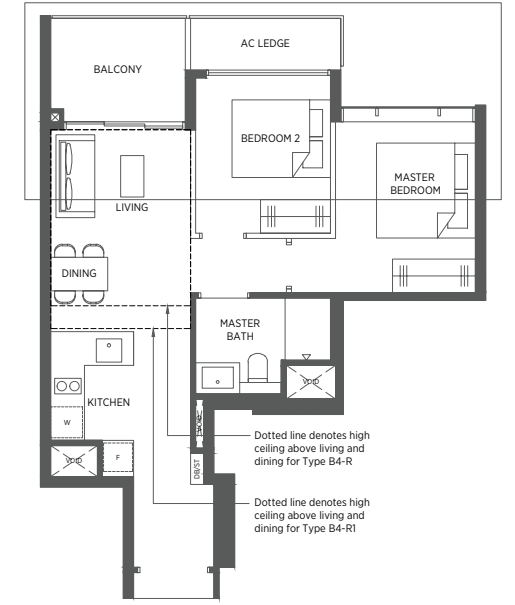
#02-24 to #17-24  
#02-25 to #17-25\*  
#02-58 to #17-58\*

#18-25\*  
#18-58\*

Incl. of 10 sq m | 108 sq ft of void area (high ceiling) above living & dining

#18-24

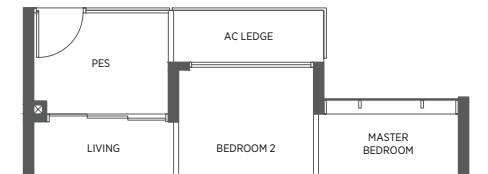
Incl. of 11 sq m | 118 sq ft of void area (high ceiling) above living & dining



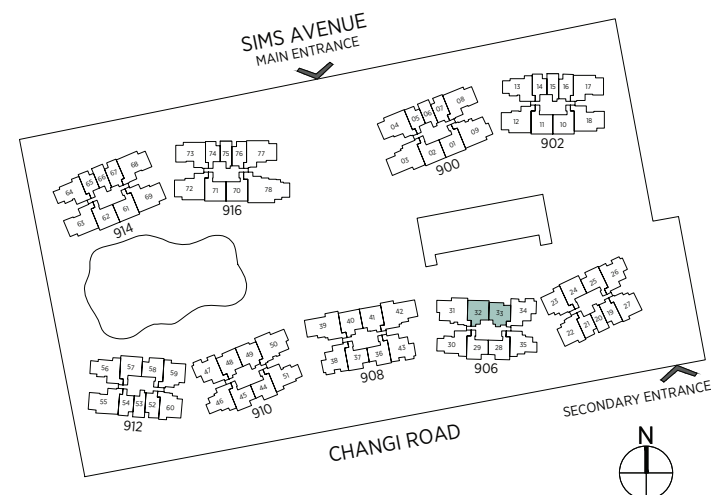
### TYPE B4-P

59 sq m | 635 sq ft

#01-24

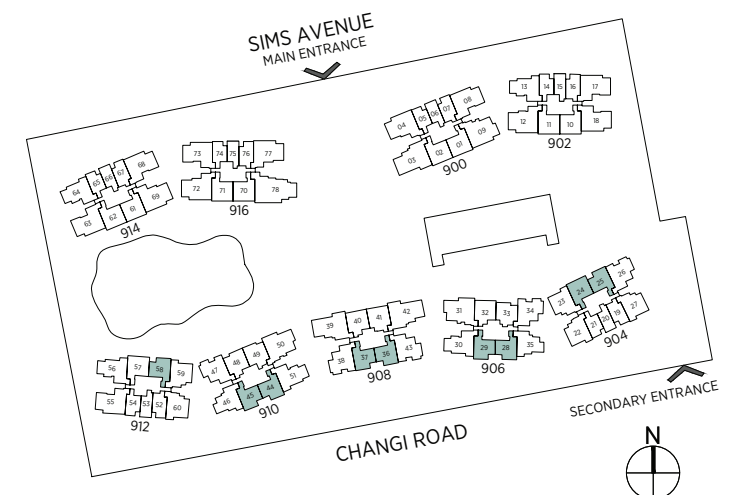


Area includes a/c ledge, balcony and void area (high ceiling). The plans are subject to change as may be required or approved by the relevant authorities. Areas are approximate measurements only and are subject to final survey. Plans are not drawn to scale and do not form part of the contract.



\* Denotes mirror image

Area includes a/c ledge, balcony and void area (high ceiling). The plans are subject to change as may be required or approved by the relevant authorities. Areas are approximate measurements only and are subject to final survey. Plans are not drawn to scale and do not form part of the contract.



## 2-Bedroom (Premium)

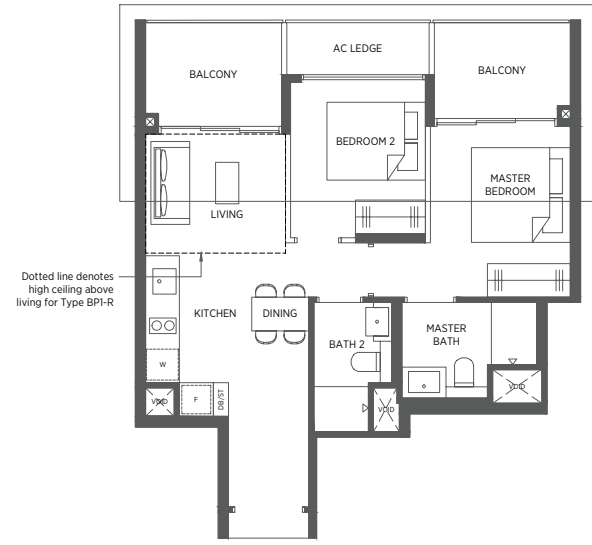
### TYPE BP1 TYPE BP1-R

65 sq m | 700 sq ft 72 sq m | 775 sq ft

#02-40 to #17-40  
#02-41 to #17-41\*

#18-40  
#18-41\*

Incl. of 7 sq m | 75 sq ft of void area (high ceiling) above living



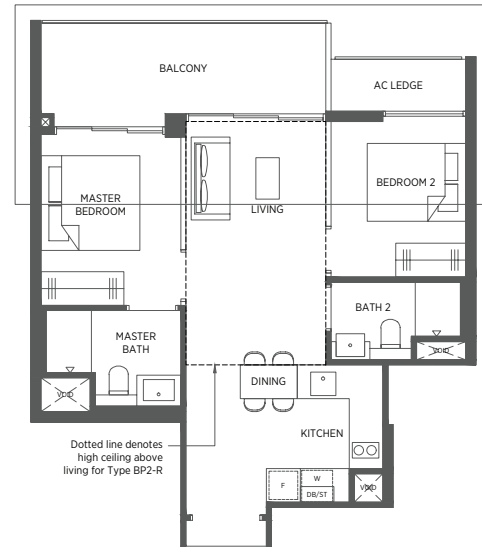
### TYPE BP2 TYPE BP2-R

66 sq m | 710 sq ft 80 sq m | 861 sq ft

#02-49 to #17-49

#18-49

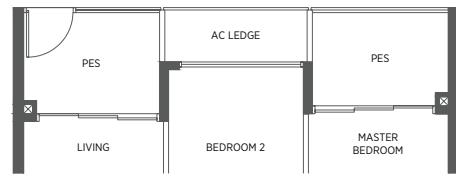
Incl. of 14 sq m | 151 sq ft of void area (high ceiling) above living



### TYPE BP1-P

65 sq m | 700 sq ft

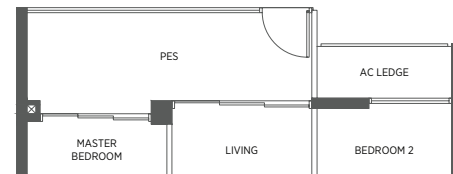
#01-40  
#01-41\*



### TYPE BP2-P

66 sq m | 710 sq ft

#01-49



## 2-Bedroom (Premium)

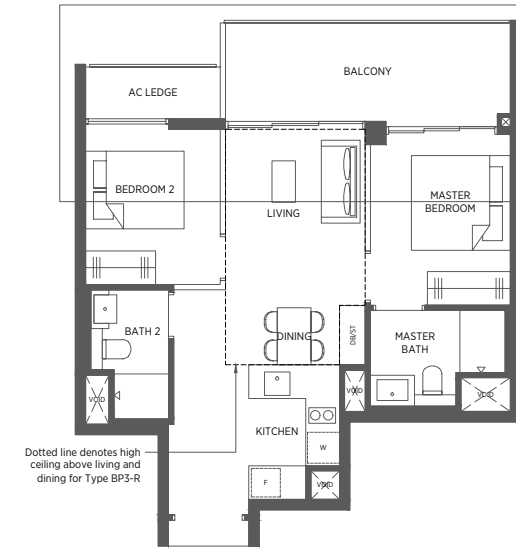
### TYPE BP3 TYPE BP3-R

67 sq m | 721 sq ft 80 sq m | 861 sq ft

#02-48 to #17-48

#18-48

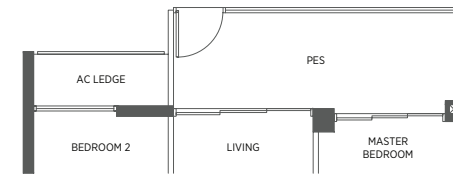
Incl. of 13 sq m | 140 sq ft of void area (high ceiling) above living & dining



### TYPE BP3-P

67 sq m | 721 sq ft

#01-48



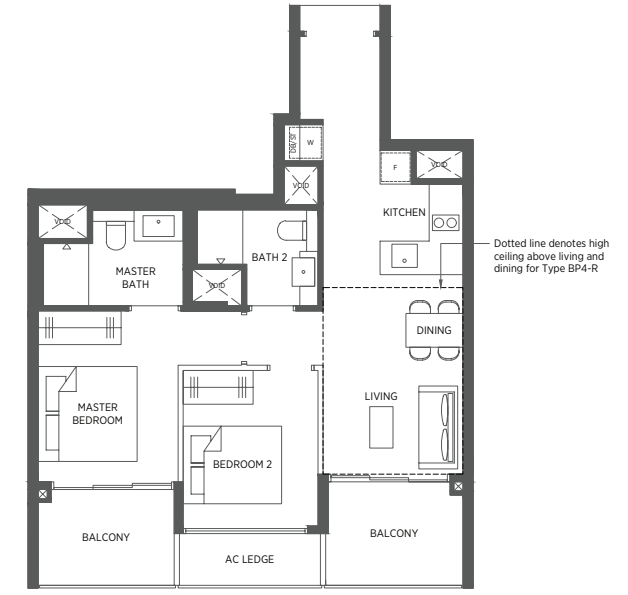
### TYPE BP4 TYPE BP4-R

68 sq m | 732 sq ft 79 sq m | 850 sq ft

#02-70 to #17-70

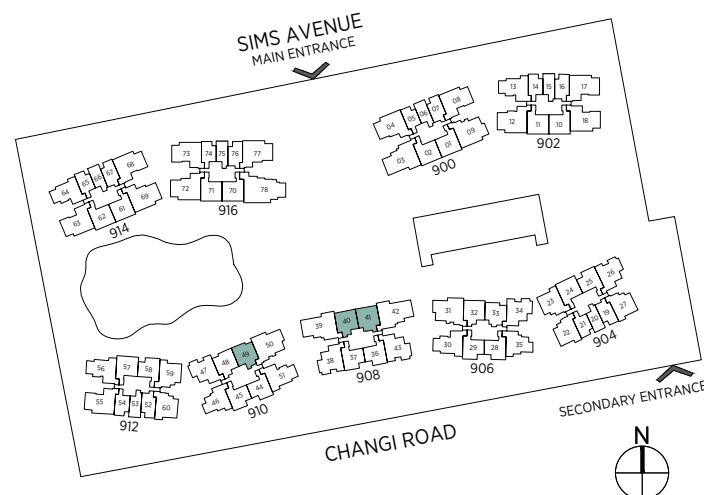
#18-70

Incl. of 11 sq m | 118 sq ft of void area (high ceiling) above living & dining

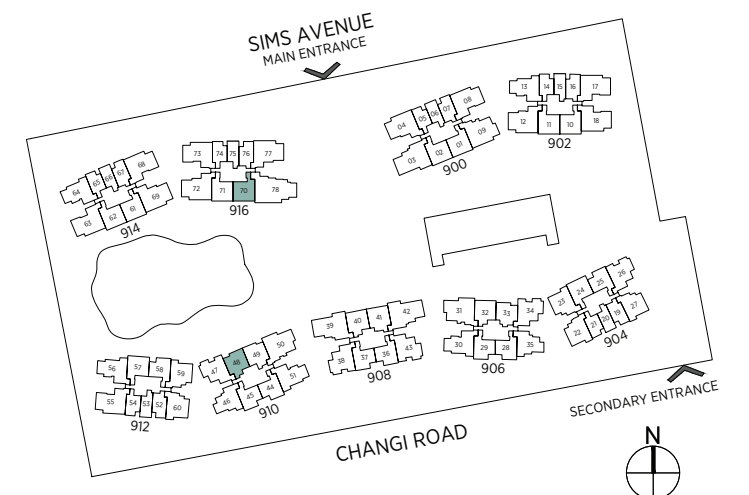


\* Denotes mirror image

Area includes a/c ledge, balcony and void area (high ceiling). The plans are subject to change as may be required or approved by the relevant authorities. Areas are approximate measurements only and are subject to final survey. Plans are not drawn to scale and do not form part of the contract.



Area includes a/c ledge, balcony and void area (high ceiling). The plans are subject to change as may be required or approved by the relevant authorities. Areas are approximate measurements only and are subject to final survey. Plans are not drawn to scale and do not form part of the contract.



## 2-Bedroom (Premium)

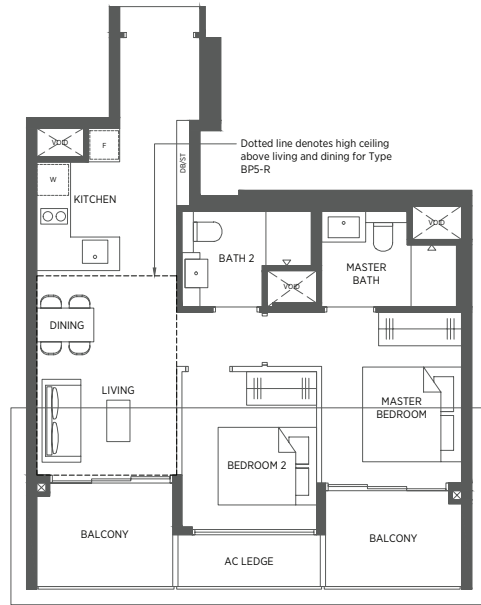
### TYPE BP5 TYPE BP5-R

69 sq m | 743 sq ft 80 sq m | 861 sq ft

#02-01 to #17-01\*  
#02-02 to #17-02  
#02-10 to #17-10\*  
#02-11 to #17-11  
#02-57 to #17-57\*  
#02-61 to #17-61\*  
#02-62 to #17-62  
#02-71 to #17-71

#18-01\*  
#18-02  
#18-10\*  
#18-11  
#18-57\*  
#18-61\*  
#18-62  
#18-71

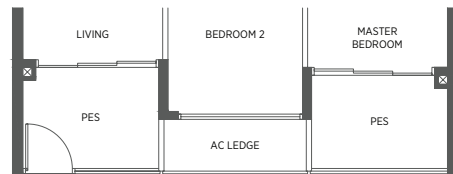
Incl. of 11 sq m | 118 sq ft of void area (high ceiling) above living & dining



### TYPE BP5-P

69 sq m | 743 sq ft

#01-02  
#01-11  
#01-57\*  
#01-71



## 2-Bedroom + Study

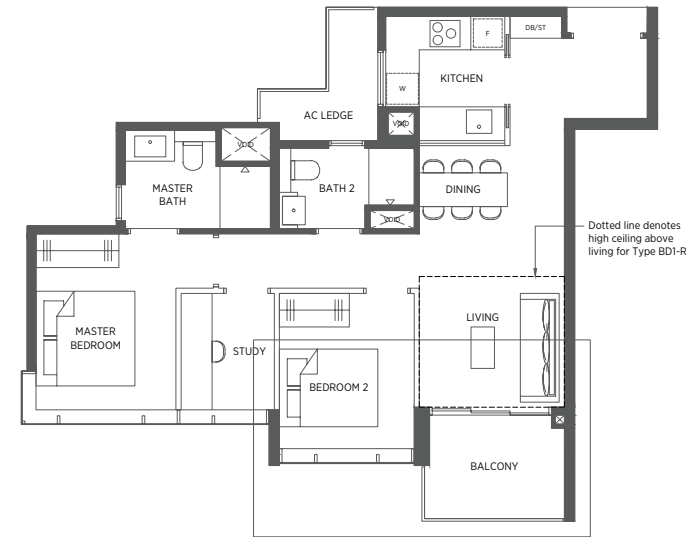
### TYPE BD1 TYPE BD1-R

77 sq m | 829 sq ft 85 sq m | 915 sq ft

#02-35 to #17-35\*  
#02-46 to #17-46

#18-35\*  
#18-46

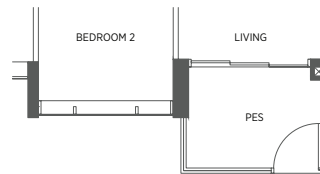
Incl. of 8 sq m | 86 sq ft of void area (high ceiling) above living



### TYPE BD1-P

77 sq m | 829 sq ft

#01-35\*  
#01-46



## 2-Bedroom + Study

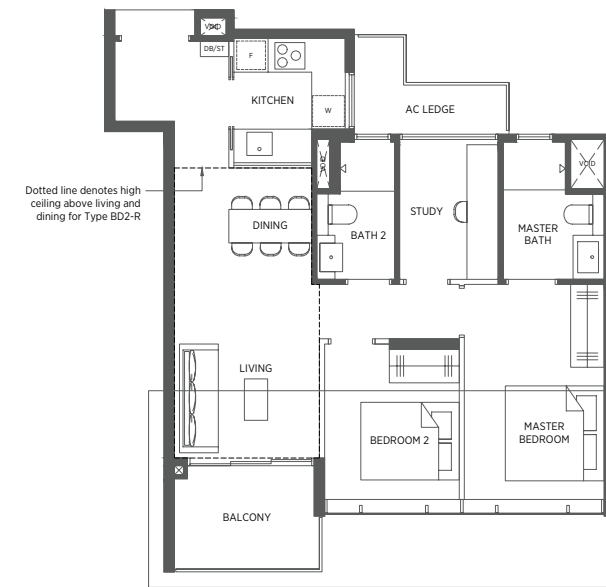
### TYPE BD2 TYPE BD2-R

78 sq m | 840 sq ft 95 sq m | 1023 sq ft

#02-22 to #17-22\*  
#03-27 to #17-27  
#02-60 to #17-60

#18-22\*  
#18-27  
#18-60

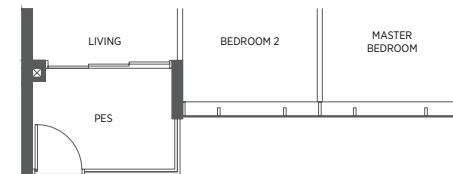
Incl. of 17 sq m | 183 sq ft of void area (high ceiling) above living & dining



### TYPE BD2-P

78 sq m | 840 sq ft

#01-22\*  
#01-60



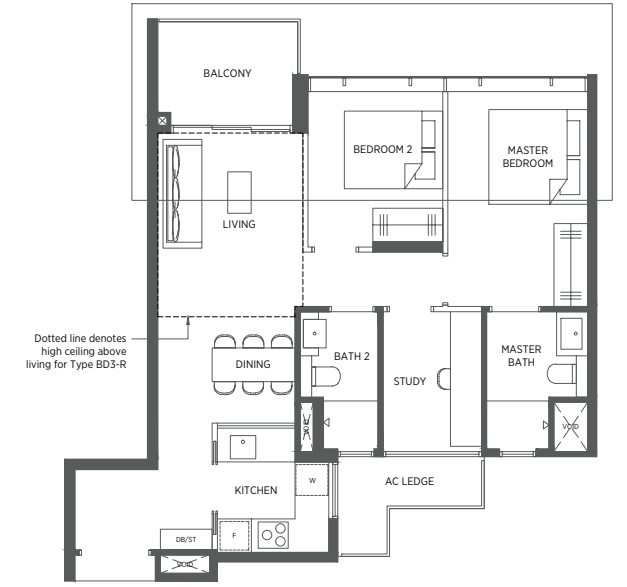
### TYPE BD3 TYPE BD3-R

78 sq m | 840 sq ft 89 sq m | 958 sq ft

#02-23 to #17-23\*  
#02-59 to #17-59

#18-23\*  
#18-59

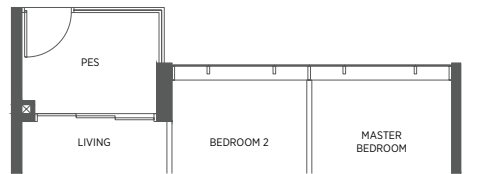
Incl. of 11 sq m | 118 sq ft of void area (high ceiling) above living



### TYPE BD3-P

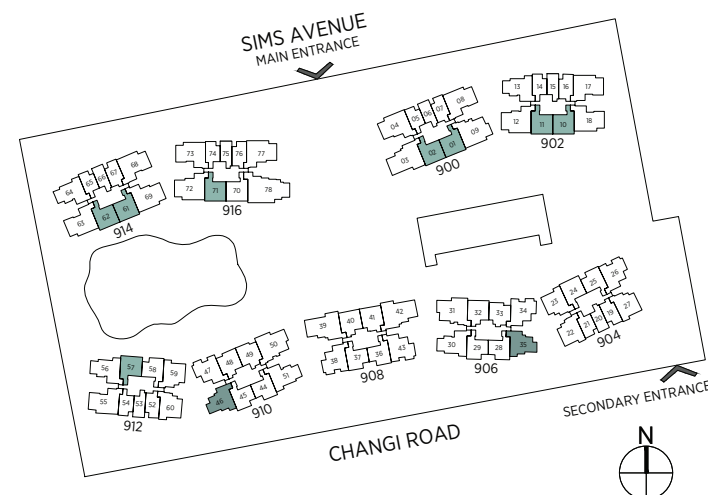
78 sq m | 840 sq ft

#01-23\*  
#01-59



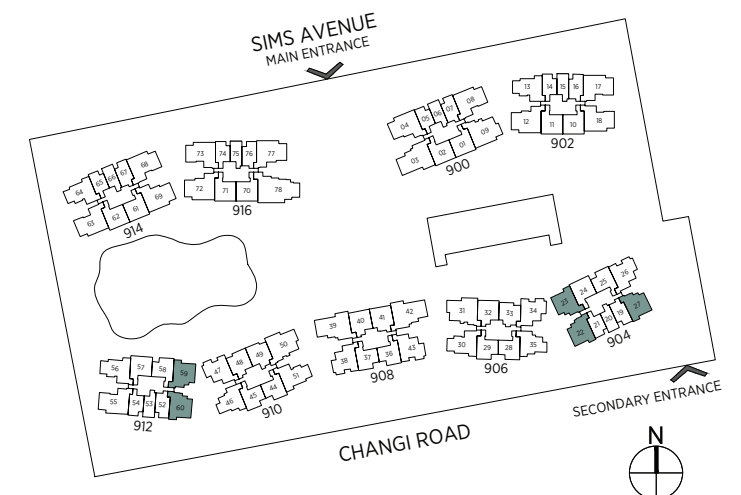
\* Denotes mirror image

Area includes a/c ledge, balcony and void area (high ceiling). The plans are subject to change as may be required or approved by the relevant authorities. Areas are approximate measurements only and are subject to final survey. Plans are not drawn to scale and do not form part of the contract.



\* Denotes mirror image

Area includes a/c ledge, balcony and void area (high ceiling). The plans are subject to change as may be required or approved by the relevant authorities. Areas are approximate measurements only and are subject to final survey. Plans are not drawn to scale and do not form part of the contract.

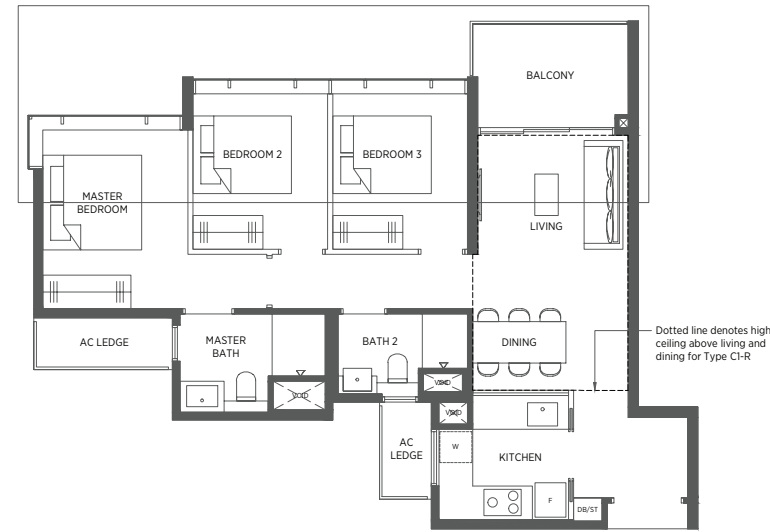


# 3-Bedroom

**TYPE C1** 84 sq m | 904 sq ft  
**TYPE C1-R** 100 sq m | 1076 sq ft

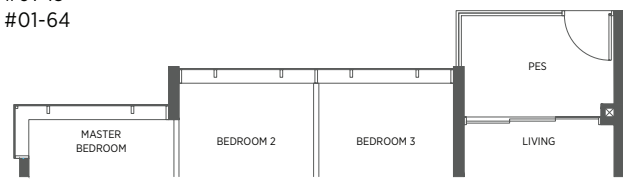
#02-13 to #17-13  
 #02-64 to #17-64

Incl. of 16 sq m | 172 sq ft of void area (high ceiling) above living & dining



**TYPE C1-P** 84 sq m | 904 sq ft

#01-13  
 #01-64

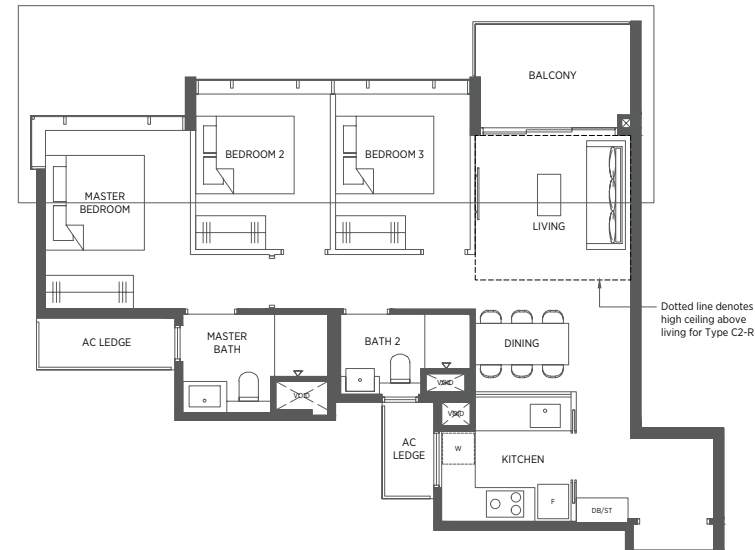


**TYPE C2** 85 sq m | 915 sq ft  
**TYPE C2-R** 94 sq m | 1012 sq ft

#02-30 to #17-30\*  
 #02-51 to #17-51  
 #02-56 to #17-56

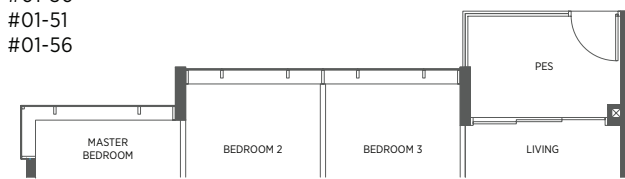
#18-30\*  
 #18-51  
 #18-56

Incl. of 9 sq m | 97 sq ft of void area (high ceiling) above living



**TYPE C2-P** 85 sq m | 915 sq ft

#01-30\*  
 #01-51  
 #01-56



# 3-Bedroom

**TYPE C3** 86 sq m | 926 sq ft  
**TYPE C3-R** 98 sq m | 1055 sq ft  
**TYPE C3-R1** 103 sq m | 1109 sq ft

#03-26 to #17-26\*  
 #02-34 to #17-34\*  
 #02-38 to #17-38\*  
 #02-43 to #17-43  
 #02-47 to #17-47

#18-26\*  
 #18-38\*  
 #18-43

#18-34\*  
 #18-47

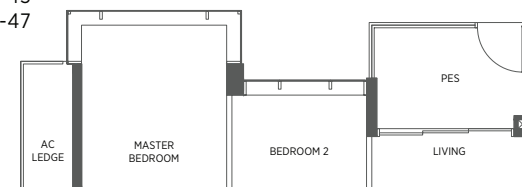
Incl. of 12 sq m | 129 sq ft of void area (high ceiling) above living

Incl. of 17 sq m | 183 sq ft of void area (high ceiling) above living & dining



**TYPE C3-P** 86 sq m | 926 sq ft

#01-34\*  
 #01-38\*  
 #01-43  
 #01-47



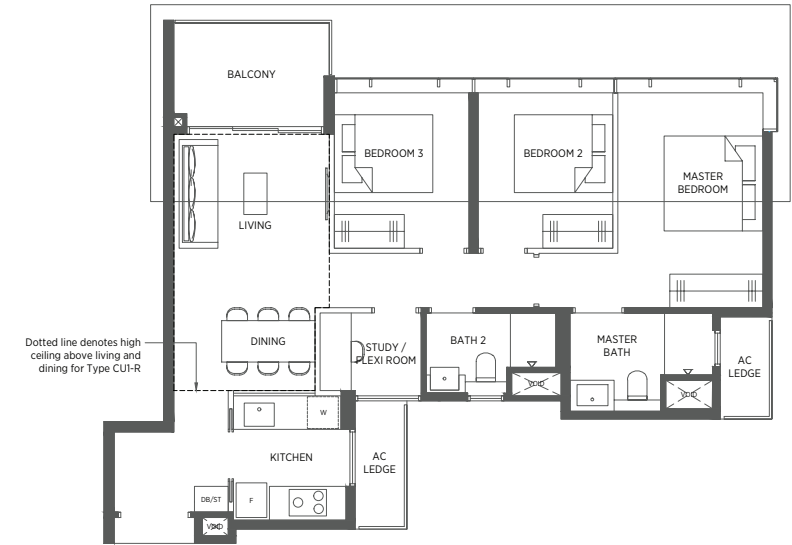
# 3-Bedroom + Study

**TYPE CUI** 89 sq m | 958 sq ft  
**TYPE CUI-R** 104 sq m | 1119 sq ft

#02-08 to #17-08  
 #02-17 to #17-17  
 #02-55 to #17-55  
 #02-68 to #17-68  
 #02-73 to #17-73\*

#18-08  
 #18-17  
 #18-55  
 #18-68  
 #18-73\*

Incl. of 15 sq m | 161 sq ft of void area (high ceiling) above living & dining



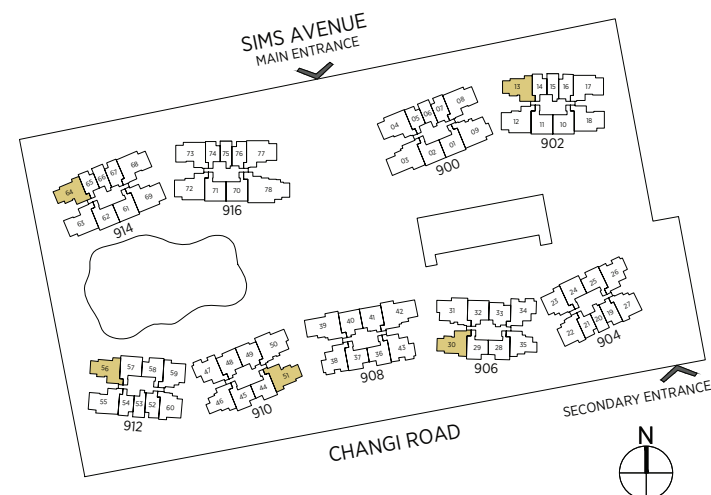
**TYPE CUI-P** 95 sq m | 1023 sq ft

#01-08  
 #01-17  
 #01-55  
 #01-68  
 #01-73\*



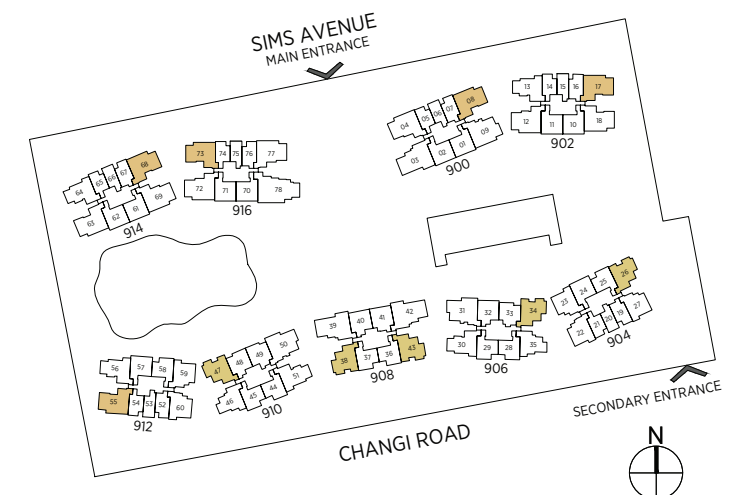
\* Denotes mirror image

Area includes a/c ledge, balcony and void area (high ceiling). The plans are subject to change as may be required or approved by the relevant authorities. Areas are approximate measurements only and are subject to final survey. Plans are not drawn to scale and do not form part of the contract.



\* Denotes mirror image

Area includes a/c ledge, balcony and void area (high ceiling). The plans are subject to change as may be required or approved by the relevant authorities. Areas are approximate measurements only and are subject to final survey. Plans are not drawn to scale and do not form part of the contract.



## 3-Bedroom + Study

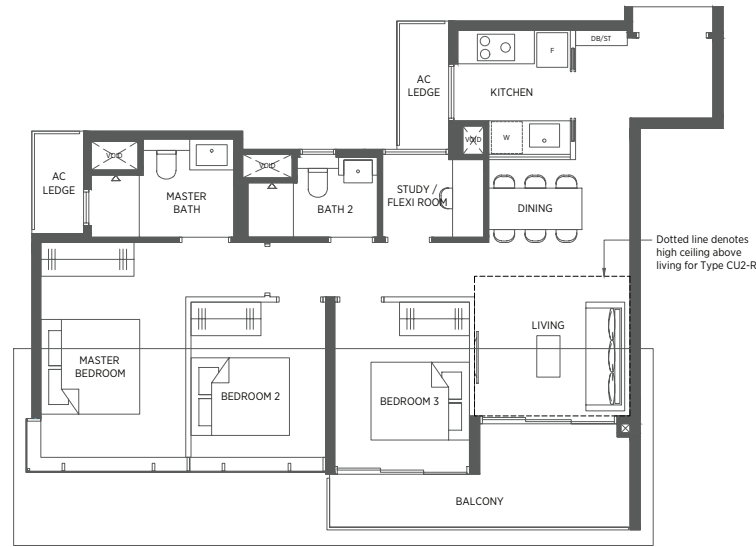
### TYPE CU2 TYPE CU2-R

93 sq m | 1001 sq ft 102 sq m | 1098 sq ft

#02-18 to #17-18\*  
#02-63 to #17-63

#18-18\*  
#18-63

Incl. of 9 sq m | 97 sq ft  
of void area (high ceiling)  
above living



## 3-Bedroom (Premium)

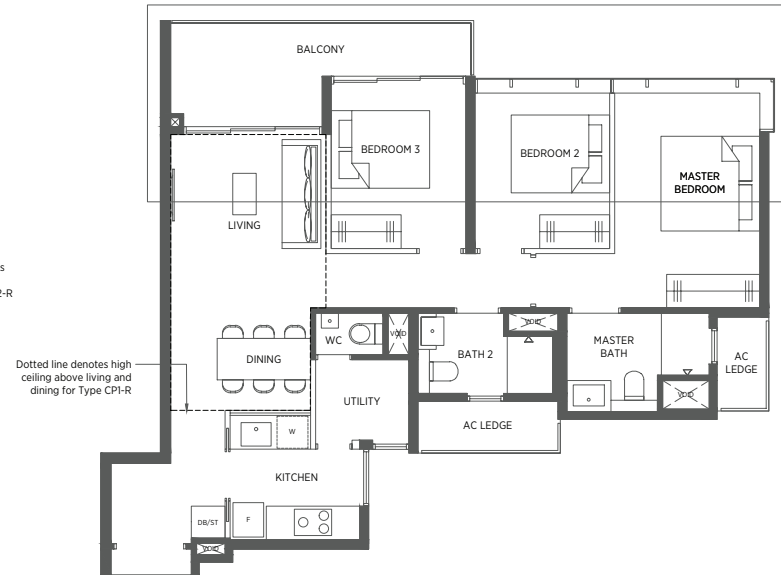
### TYPE CP1 TYPE CP1-R

95 sq m | 1023 sq ft 112 sq m | 1206 sq ft

#02-04 to #17-04\*  
#02-77 to #17-77

#18-04\*  
#18-77

Incl. of 17 sq m | 183 sq ft  
of void area (high ceiling)  
above living & dining



## 3-Bedroom (Premium)

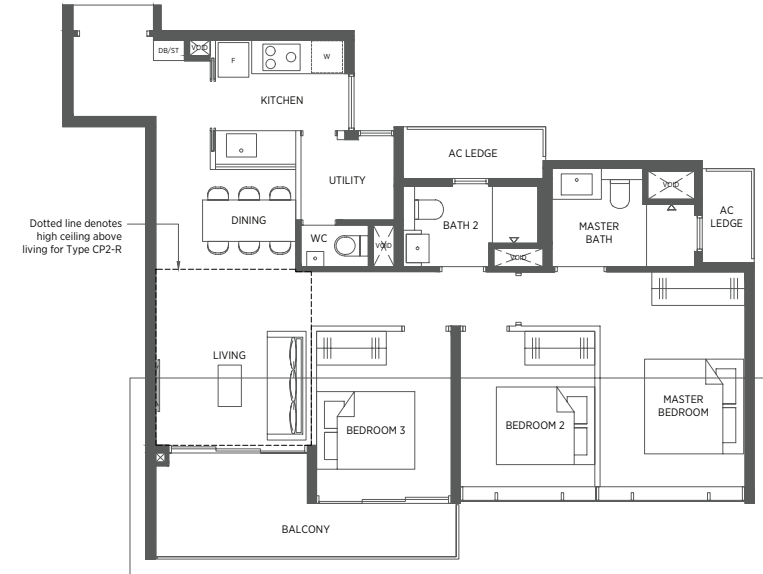
### TYPE CP2 TYPE CP2-R

96 sq m | 1033 sq ft 107 sq m | 1152 sq ft

#02-12 to #17-12\*  
#02-69 to #17-69  
#02-72 to #17-72\*

#18-12\*  
#18-69  
#18-72\*

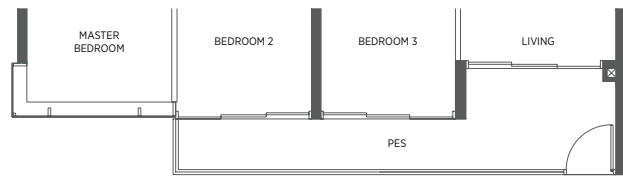
Incl. of 11 sq m | 118 sq ft  
of void area (high ceiling)  
above living



### TYPE CU2-P

96 sq m | 1033 sq ft

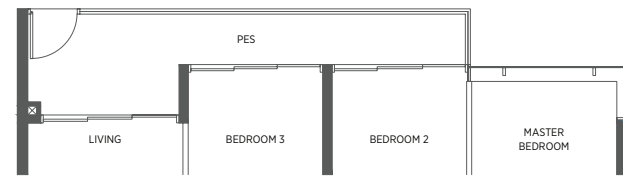
#01-18\*  
#01-63



### TYPE CP1-P

98 sq m | 1055 sq ft

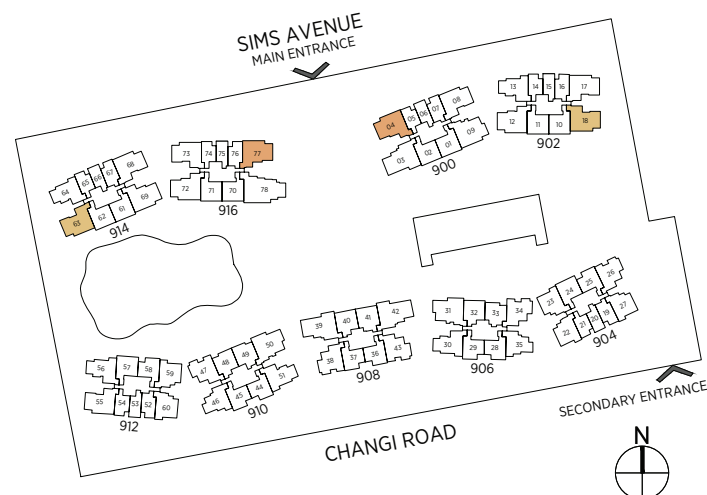
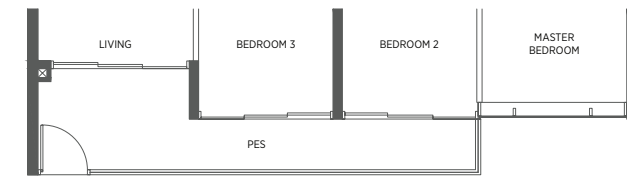
#01-04\*  
#01-77



### TYPE CP2-P

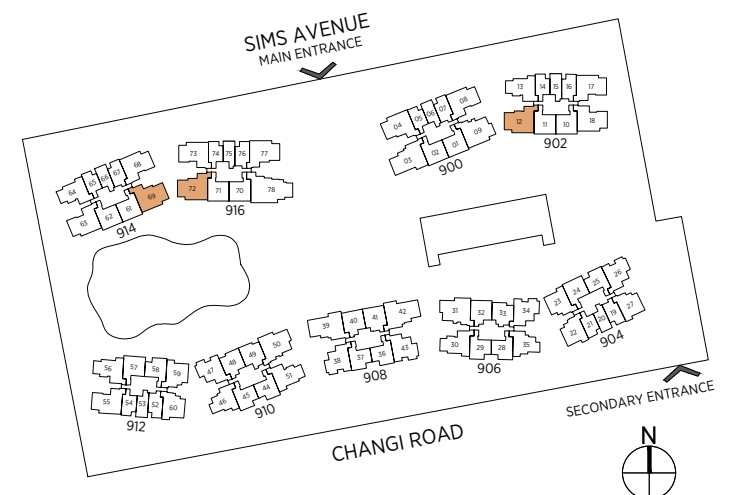
99 sq m | 1066 sq ft

#01-12\*  
#01-69  
#01-72\*



\* Denotes mirror image

Area includes a/c ledge, balcony and void area (high ceiling). The plans are subject to change as may be required or approved by the relevant authorities. Areas are approximate measurements only and are subject to final survey. Plans are not drawn to scale and do not form part of the contract.



\* Denotes mirror image

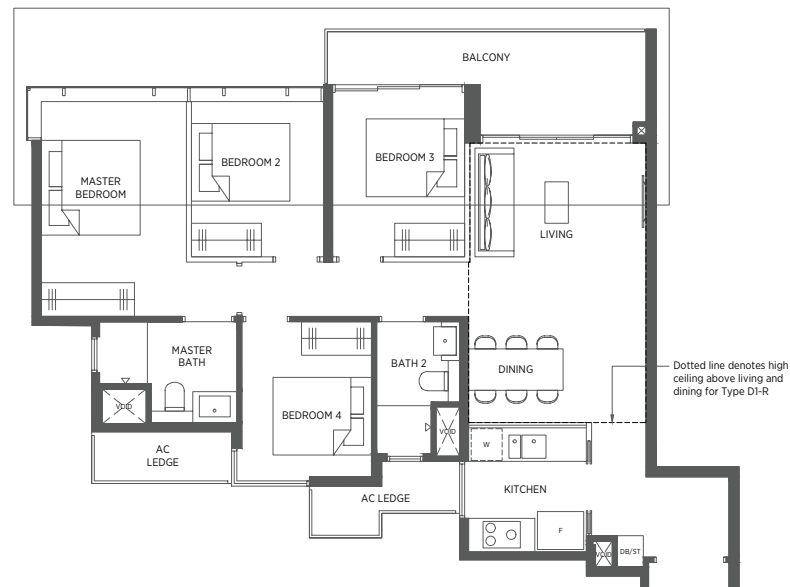
Area includes a/c ledge, balcony and void area (high ceiling). The plans are subject to change as may be required or approved by the relevant authorities. Areas are approximate measurements only and are subject to final survey. Plans are not drawn to scale and do not form part of the contract.

# 4-Bedroom

**TYPE D1** 104 sq m | 1119 sq ft  
**TYPE D1-R** 124 sq m | 1335 sq ft

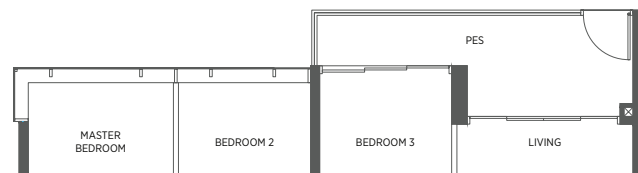
#02-31 to #17-31  
 #02-50 to #17-50\*  
 #18-31  
 #18-50\*

Incl. of 20 sq m | 215 sq ft of void area (high ceiling) above living & dining



**TYPE D1-P** 104 sq m | 1119 sq ft

#01-31  
 #01-50\*

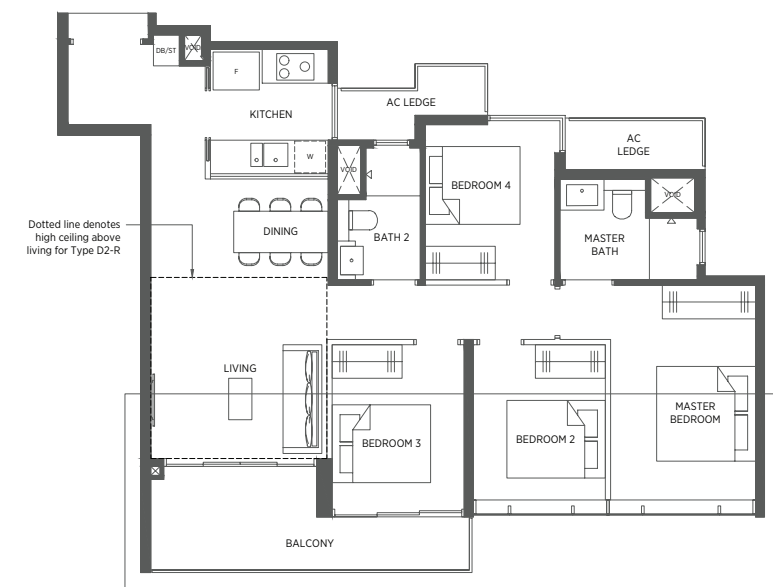


# 4-Bedroom

**TYPE D2** 104 sq m | 1119 sq ft  
**TYPE D2-R** 117 sq m | 1259 sq ft

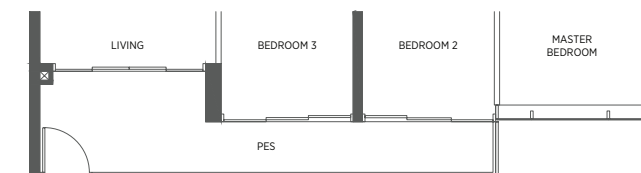
#02-09 to #17-09  
 #18-09

Incl. of 13 sq m | 140 sq ft of void area (high ceiling) above living



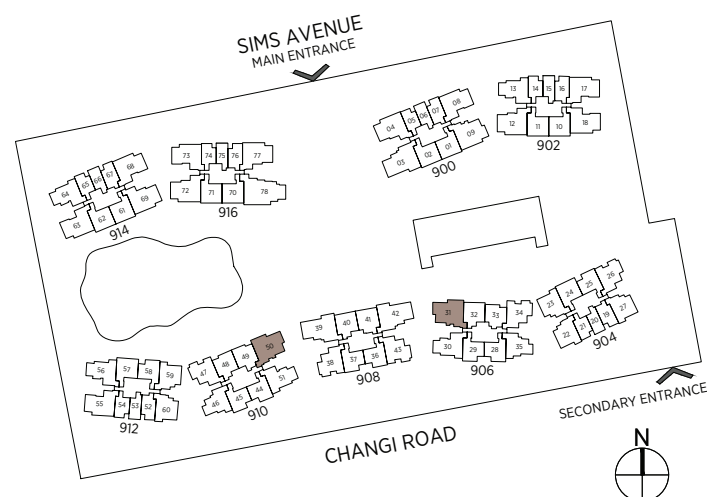
**TYPE D2-P** 107 sq m | 1152 sq ft

#01-09

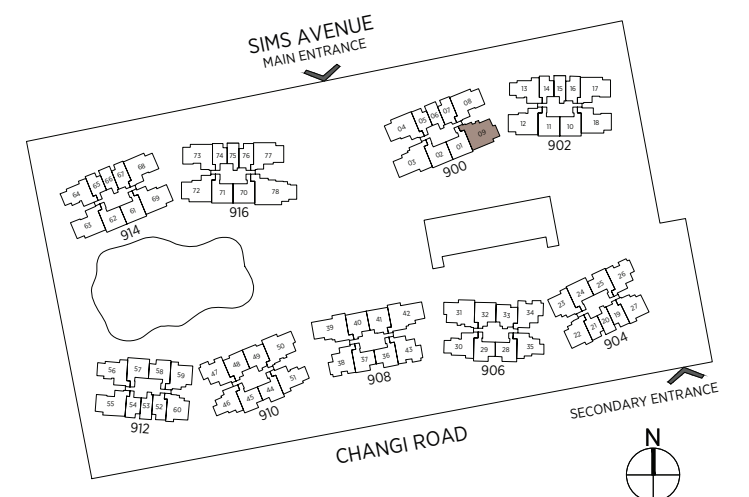


\* Denotes mirror image

Area includes a/c ledge, balcony and void area (high ceiling). The plans are subject to change as may be required or approved by the relevant authorities. Areas are approximate measurements only and are subject to final survey. Plans are not drawn to scale and do not form part of the contract.



Area includes a/c ledge, balcony and void area (high ceiling). The plans are subject to change as may be required or approved by the relevant authorities. Areas are approximate measurements only and are subject to final survey. Plans are not drawn to scale and do not form part of the contract.



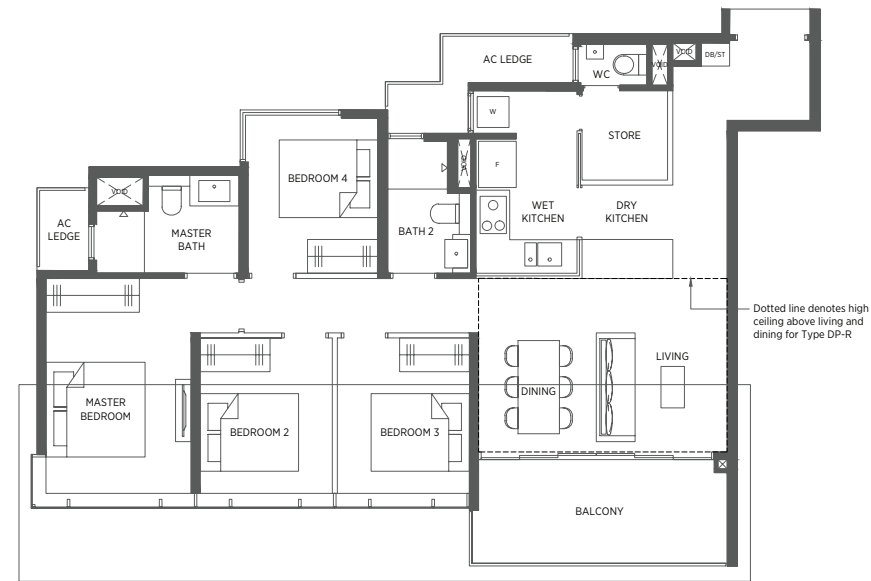
# 4-Bedroom (Premium)

## TYPE DP TYPE DP-R

114 sq m | 1227 sq ft 131 sq m | 1410 sq ft

#02-03 to #17-03 #18-03  
 #02-39 to #17-39\* #18-39\*  
 #02-42 to #17-42 #18-42

Incl. of 17 sq m | 183 sq ft of void area (high ceiling) above living & dining



## TYPE DP-P

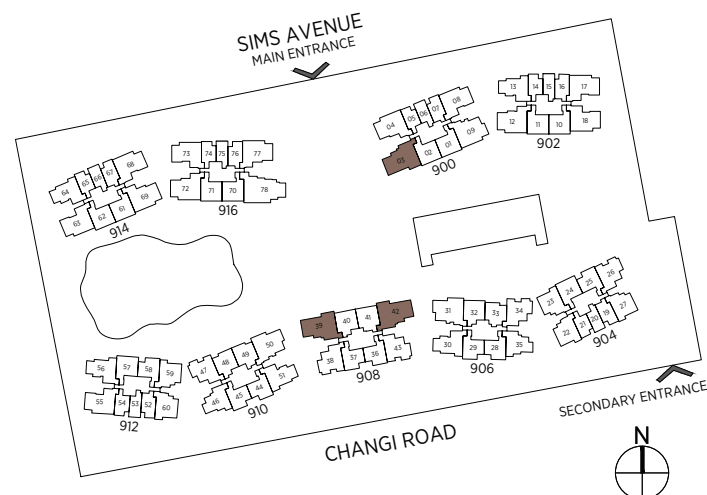
114 sq m | 1227 sq ft

#01-03  
 #01-39\*  
 #01-42



\* Denotes mirror image

Area includes a/c ledge, balcony and void area (high ceiling). The plans are subject to change as may be required or approved by the relevant authorities. Areas are approximate measurements only and are subject to final survey. Plans are not drawn to scale and do not form part of the contract.



# 5-Bedroom

## TYPE E TYPE E-R

130 sq m | 1399 sq ft 149 sq m | 1604 sq ft

#02-78 to #17-78 #18-78

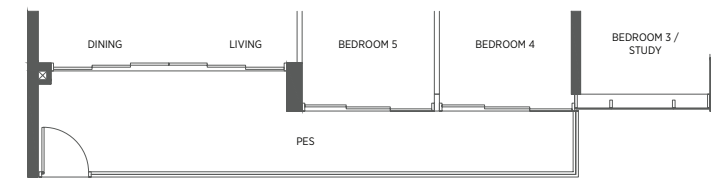
Incl. of 19 sq m | 205 sq ft of void area (high ceiling) above living & dining



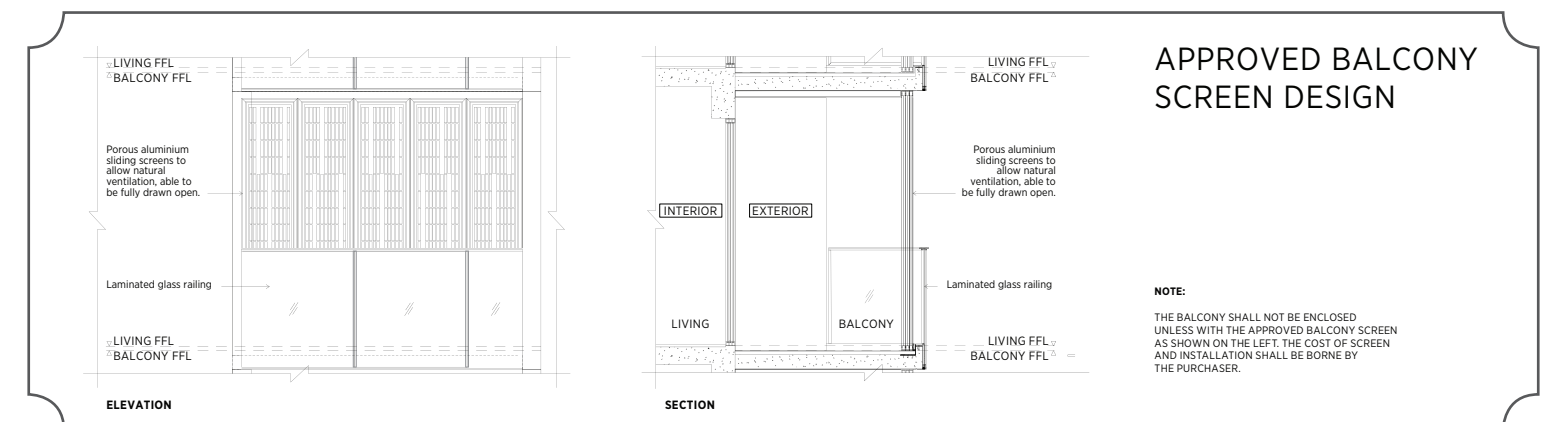
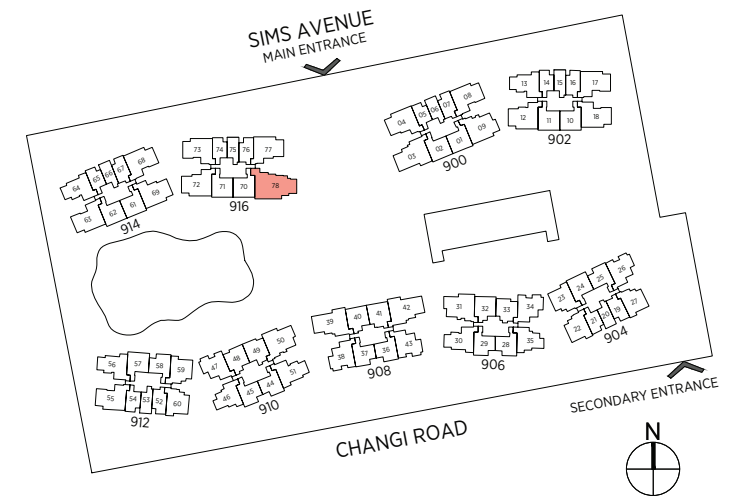
## TYPE E-P

137 sq m | 1475 sq ft

#01-78



Area includes a/c ledge, balcony and void area (high ceiling). The plans are subject to change as may be required or approved by the relevant authorities. Areas are approximate measurements only and are subject to final survey. Plans are not drawn to scale and do not form part of the contract.



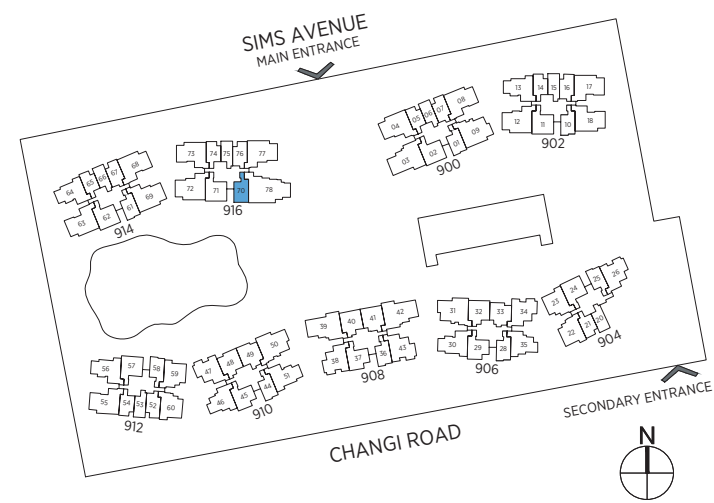
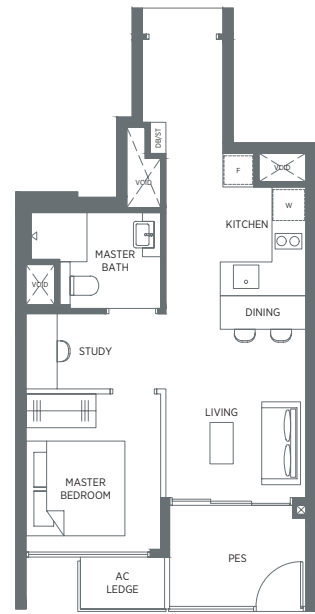


# 1-Bedroom + Study

## TYPE AD4-P

49 sq m | 527 sq ft

#01-70



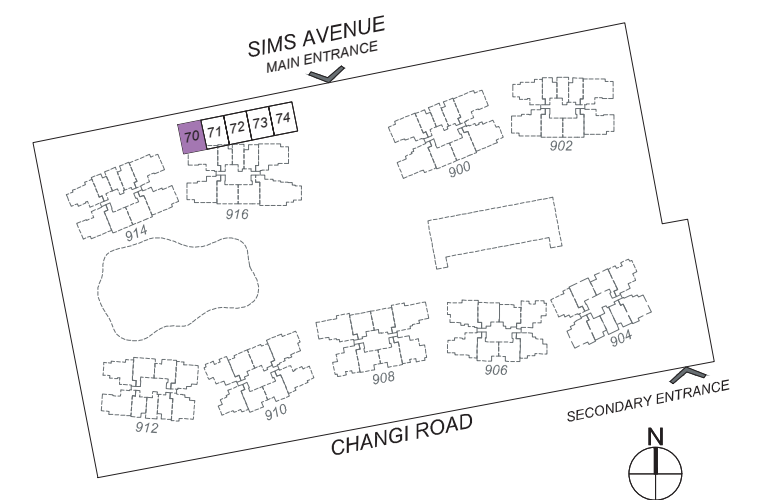
Area includes a/c ledge, balcony and void area (high ceiling). The plans are subject to change as may be required or approved by the relevant authorities. Areas are approximate measurements only and are subject to final survey. Plans are not drawn to scale and do not form part of the contract.

# Shop

## TYPE S1

61 sq m | 657 sq ft

#B1-70



Plans are subject to change/amendments as may be required and/or approved by the Developer and/or the relevant authorities and do not form part of any offer or contract. These are not drawn to scale and are for the purpose of visual presentation only.

# Shop

## TYPE S2

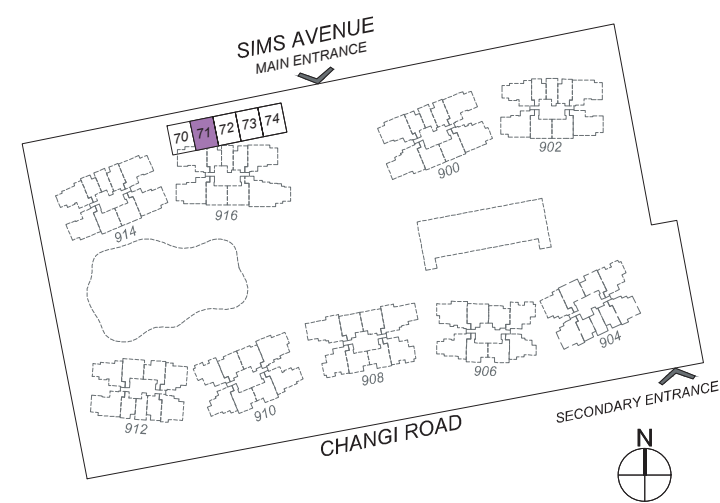
61 sq m | 657 sq ft

#B1-71



SHOP 2

AC  
LEDGE



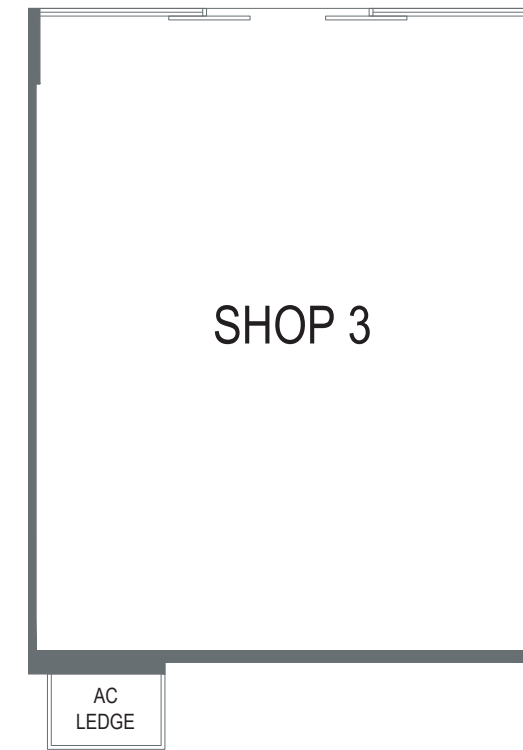
Plans are subject to change/amendments as may be required and/or approved by the Developer and/or the relevant authorities and do not form part of any offer or contract. These are not drawn to scale and are for the purpose of visual presentation only.

# Shop

## TYPE S3

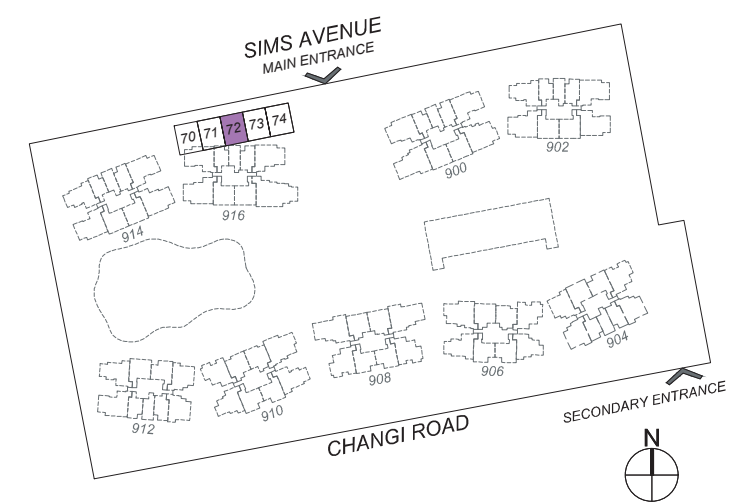
61 sq m | 657 sq ft

#B1-72



SHOP 3

AC  
LEDGE



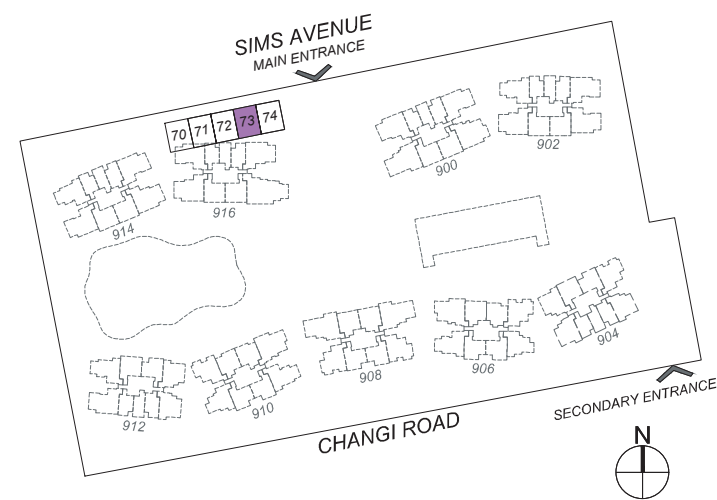
Plans are subject to change/amendments as may be required and/or approved by the Developer and/or the relevant authorities and do not form part of any offer or contract. These are not drawn to scale and are for the purpose of visual presentation only.

# Shop

## TYPE S4

61 sq m | 657 sq ft

#B1-73



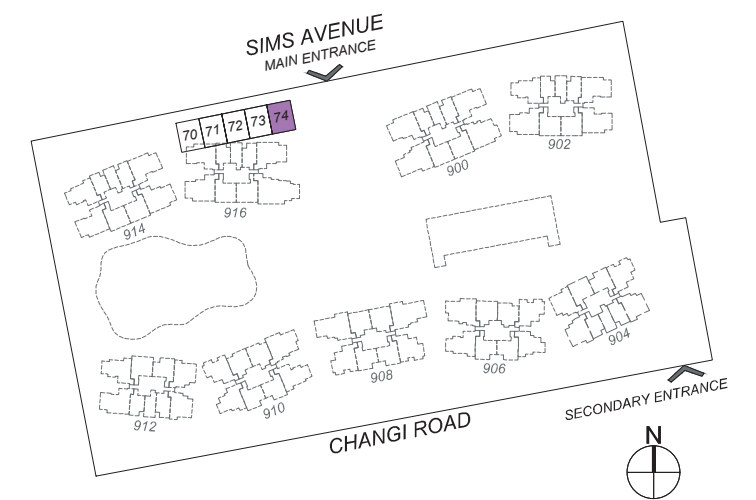
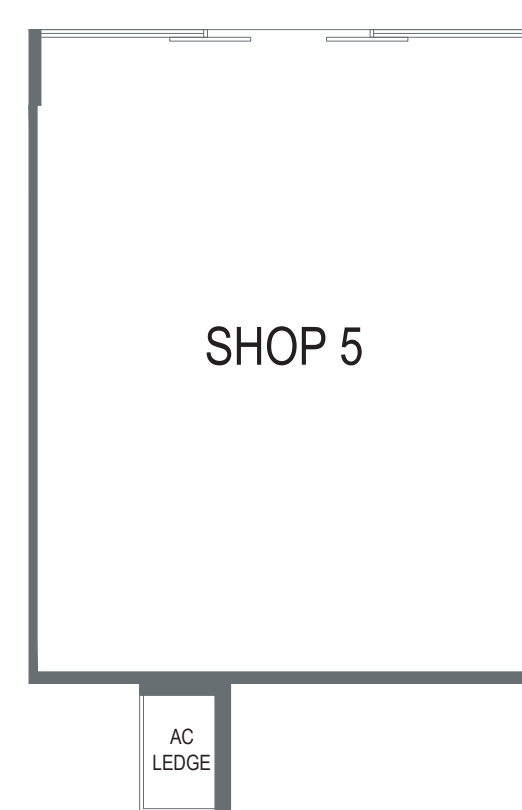
Plans are subject to change/amendments as may be required and/or approved by the Developer and/or the relevant authorities and do not form part of any offer or contract. These are not drawn to scale and are for the purpose of visual presentation only.

# Shop

## TYPE S5

61 sq m | 657 sq ft

#B1-74



Plans are subject to change/amendments as may be required and/or approved by the Developer and/or the relevant authorities and do not form part of any offer or contract. These are not drawn to scale and are for the purpose of visual presentation only.