









Schematic Diagram

2 Irwell Hill, Singapore 239588 (North Tower)

Unit Floor	1	2	3	4	5	6	7	8
Roof	IRWELL SKY (ROOF TERRACE)							
36		B8L	B3L	A2SL	A3SL	A1L	B4L	PH3
35	B5(b)	B8(b)	B3(b)	A2S(b)	A3S(b)	A1	B4(b)	D1(b)
34	B5(b)	B8(b)	B3(b)	A2S(b)	A3S(b)	A1	B4(b)	D1(b)
33	B5(b)	B8(b)	B3(b)	A2S(b)	A3S(b)	A1	B4(b)	D1(b)
32	B5(b)	B8(b)	B3(b)	A2S(b)	A3S(b)	A1	B4(b)	D1(b)
31	B5(b)	B8(b)	B3(b)	A2S(b)	A3S(b)	A1	B4(b)	D2(b)
30	B5(b)	B8(b)	B3(b)	A2S(b)	A3S(b)	A1	B4(b)	D1(b)
29	B5(b)	B8(b)	B3(b)	A2S(b)	A3S(b)	A1	B4(b)	D2(b)
28	B5(b)	B8(b)	B3(b)	A2S(b)	A3S(b)	A1	B4(b)	D2(b)
27	B5(b)	B8(b)	B3(b)	A2S(b)	A3S(b)	A1	B4(b)	D2(b)
26	B5(b)	B8(b)	B3(b)	A2S(b)	A3S(b)	A1	B4(b)	D2(b)
25	B5(b)	B8(b)	B3(b)	A2S(b)	A3S(b)	A1	B4(b)	D2(b)
24	IRWELL VISTA (SKY TERRACE)							
23	B5(b)	B8(b)	B3(b)	A2S(b)	A3S(b)	A1	B4(b)	D1(b)
22	B5(b)	B8(b)	B3(b)	A2S	A3S	A1	B4(b)	D2(b)
21	B5(b)	B8(b)	B3(b)	A2S	A3S(b)	A1	B4(b)	D2(b)
20	B5(b)	B8(b)	B3(b)	A2S(b)	A3S(b)	A1	B4(b)	D2(b)
19	B5(b)	B8(b)	B3(b)	A2S(b)	A3S(b)	A1	B4(b)	D2(b)
18	B5(b)	B8(b)	B3(b)	A2S(b)	A3S(b)	A1	B4(b)	D1(b)
17	B5(b)	B8(b)	B3(b)	A2S(b)	A3S	A1	B4(b)	D1(b)
16	B5(b)	B8(b)	B3(b)	A2S	A3S	A1	B4(b)	D2(b)
15	B5(b)	B8(b)	B3(b)	A2S	A3S(b)	A1	B4(b)	D2(b)
14	B5(b)	B8(b)	B3(b)	A2S(b)	A3S(b)	A1	B4(b)	D2(b)
13	B5(b)	B8(b)	B3(b)	A2S(b)	A3S(b)	A1	B4(b)	D2(b)
12	B5(b)	B8(b)	B3(b)	A2S(b)	A3S(b)	A1	B4(b)	D2(b)
11	B5(b)	B8(b)	B3(b)	A2S(b)	A3S(b)	A1	B4(b)	D2(b)
10	B5(b)	B8(b)	B3(b)	A2S	A3S(b)	A1	B4(b)	D2(b)
9	B5(b)	B8(b)	B3(b)	A2S(b)	A3S(b)	A1	B4(b)	D1(b)
8	B5(b)	B8(b)	B3(b)	A2S	A3S	A1	B4(b)	D2(b)
7	B5(b)	B8(b)	B3(b)	A2S(b)	A3S	A1	B4(b)	D1(b)
6	B5(b)	B8(b)	B3(b)	A2S(b)	A3S(b)	A1	B4(b)	D1(b)
5	B5(b)	B8(b)	B3(b)	A2S(b)	A3S	A1	B4(b)	D1(b)
4	B5(b)	B8(b)	B3(b)	A2S	A3S	A1	B4(b)	D2(b)
3	B5(b)	B8(b)	B3(b)	A2S	A3S(b)	A1	B4(b)	D2(b)
2	B5(b)	B8(b)	B3(b)	A2S(b)	A3S(b)	A1		D2(b)
1	FACILITIES AND LANDSCAPE							

Legend

 Studio	 2-Bedroom Classic	 3-Bedroom Classic	 4-Bedroom Premium
 1-Bedroom + Study	 2-Bedroom Premium	 3-Bedroom Premium	 Sky Penthouse

6 Irwell Hill, Singapore 239590 (South Tower)

Unit Floor	9	10	11	12	13	14	15	16
Roof	IRWELL SKY (ROOF TERRACE)							
36	PH1 (#36-09)		B9L	A4SL	B1L	B2L	PH2 (#36-15)	
35	B7(b)	C2(b)	B9(b)	A4S(b)	B1(b)	B2(b)	C1(b)	B6(b)
34	B7(b)	C2(b)	B9(b)	A4S(b)	B1(b)	B2(b)	C1(b)	B6(b)
33	B7(b)	C2(b)	B9(b)	A4S(b)	B1(b)	B2(b)	C1(b)	B6(b)
32	B7(b)	C2(b)	B9(b)	A4S(b)	B1(b)	B2(b)	C1(b)	B6(b)
31	B7(b)	C2(b)	B9(b)	A4S(b)	B1(b)	B2(b)	C1(b)	B6(b)
30	B7(b)	C2(b)	B9(b)	A4S(b)	B1(b)	B2(b)	C1(b)	B6(b)
29	B7(b)	C2(b)	B9(b)	A4S(b)	B1(b)	B2(b)	C1(b)	B6(b)
28	B7(b)	C2(b)	B9(b)	A4S(b)	B1(b)	B2(b)	C1(b)	B6(b)
27	B7(b)	C2(b)	B9(b)	A4S(b)	B1(b)	B2(b)	C1(b)	B6(b)
26	B7(b)	C2(b)	B9(b)	A4S(b)	B1(b)	B2(b)	C1(b)	B6(b)
25	B7(b)	C2(b)	B9(b)	A4S(b)	B1(b)	B2(b)	C1(b)	B6(b)
24	IRWELL VISTA (SKY TERRACE)							
23	B7(b)	C2(b)	B9(b)	A4S(b)	B1(b)	B2(b)	C1(b)	B6(b)
22	B7(b)	C2(b)	B9(b)	A4S(b)	B1(b)	B2(b)	C1(b)	B6(b)
21	B7(b)	C2(b)	B9(b)	A4S	B1(b)	B2(b)	C1(b)	B6(b)
20	B7(b)	C2(b)	B9(b)	A4S	B1(b)	B2(b)	C1(b)	B6(b)
19	B7(b)	C2(b)	B9(b)	A4S(b)	B1(b)	B2(b)	C1(b)	B6(b)
18	B7(b)	C2(b)	B9(b)	A4S(b)	B1(b)	B2(b)	C1(b)	B6(b)
17	B7(b)	C2(b)	B9(b)	A4S(b)	B1(b)	B2(b)	C1(b)	B6(b)
16	B7(b)	C2(b)	B9(b)	A4S(b)	B1(b)	B2(b)	C1(b)	B6(b)
15	B7(b)	C2(b)	B9(b)	A4S	B1(b)	B2(b)	C1(b)	B6(b)
14	B7(b)	C2(b)	B9(b)	A4S(b)	B1(b)	B2(b)	C1(b)	B6(b)
13	B7(b)	C2(b)	B9(b)	A4S	B1(b)	B2(b)	C1(b)	B6(b)
12	B7(b)	C2(b)	B9(b)	A4S(b)	B1(b)	B2(b)	C1(b)	B6(b)
11	B7(b)	C2(b)	B9(b)	A4S(b)	B1(b)	B2(b)	C1(b)	B6(b)
10	B7(b)	C2(b)	B9(b)	A4S(b)	B1(b)	B2(b)	C1(b)	B6(b)
9	B7(b)	C2(b)	B9(b)	A4S	B1(b)	B2(b)	C1(b)	B6(b)
8	B7(b)	C2(b)	B9(b)	A4S	B1(b)	B2(b)	C1(b)	B6(b)
7	B7(b)	C2(b)	B9(b)	A4S(b)	B1(b)	B2(b)	C1(b)	B6(b)
6	B7(b)	C2(b)	B9(b)	A4S(b)	B1(b)	B2(b)	C1(b)	B6(b)
5	B7(b)	C2(b)	B9(b)	A4S	B1(b)	B2(b)	C1(b)	B6(b)
4	B7(b)	C2(b)	B9(b)	A4S	B1(b)	B2(b)	C1(b)	B6(b)
3	B7(b)	C2(b)	B9(b)	A4S(b)	B1(b)	B2(b)	C1(b)	B6(b)
2	B7(b)	C2(b)	B9(b)	A4S(b)	B1(b)	B2(b)	C1(b)	B6(b)
1	FACILITIES AND LANDSCAPE							

Studio

Type A1

37 sq m / 398 sq ft

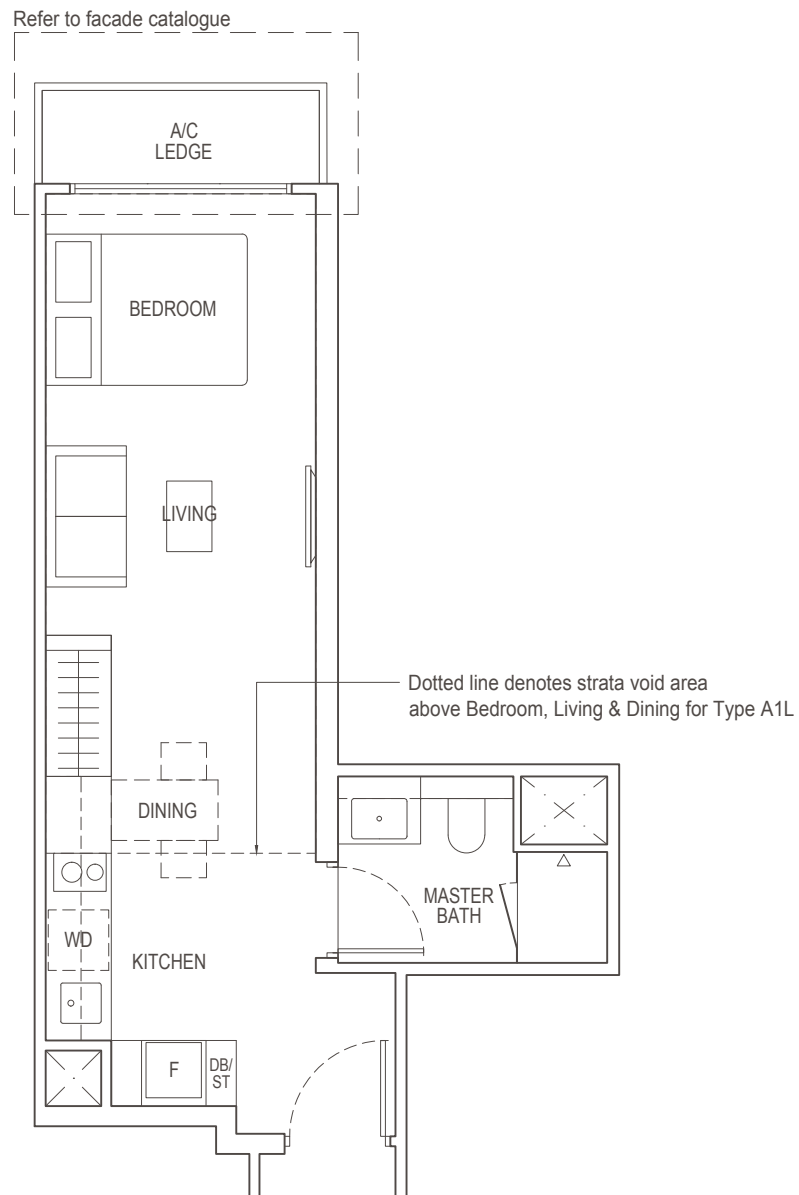
Block 2: #02-06 to #23-06, #25-06 to #35-06

Studio Loft

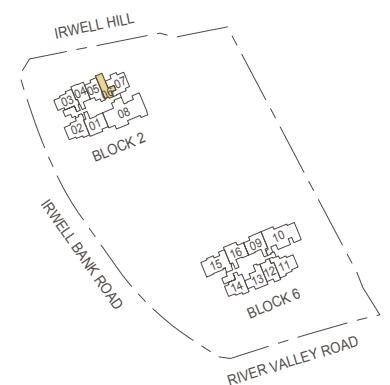
Type A1L

57 sq m / 614 sq ft

Inclusive of strata void area of
20 sq m / 215 sq ft above Bedroom, Living & Dining
Block 2: #36-06



Area includes air-con (A/C) ledge, balcony and strata void area where applicable. The plans are subject to change as may be approved by relevant authorities. All floor plans are approximate measurements only and are subject to government re-survey. The balcony shall not be enclosed unless with the approved balcony screen. For an illustration of the approved balcony screen, please refer to the diagram annexed hereto as "Annexure 1".



Key plan is not drawn to scale.



1-Bedroom + Study

Type A3S(b)

46 sq m / 495 sq ft

Block 2: #02-05, #03-05, #06-05, #09-05 to #15-05
#18-05 to #21-05, #23-05, #25-05 to #35-05

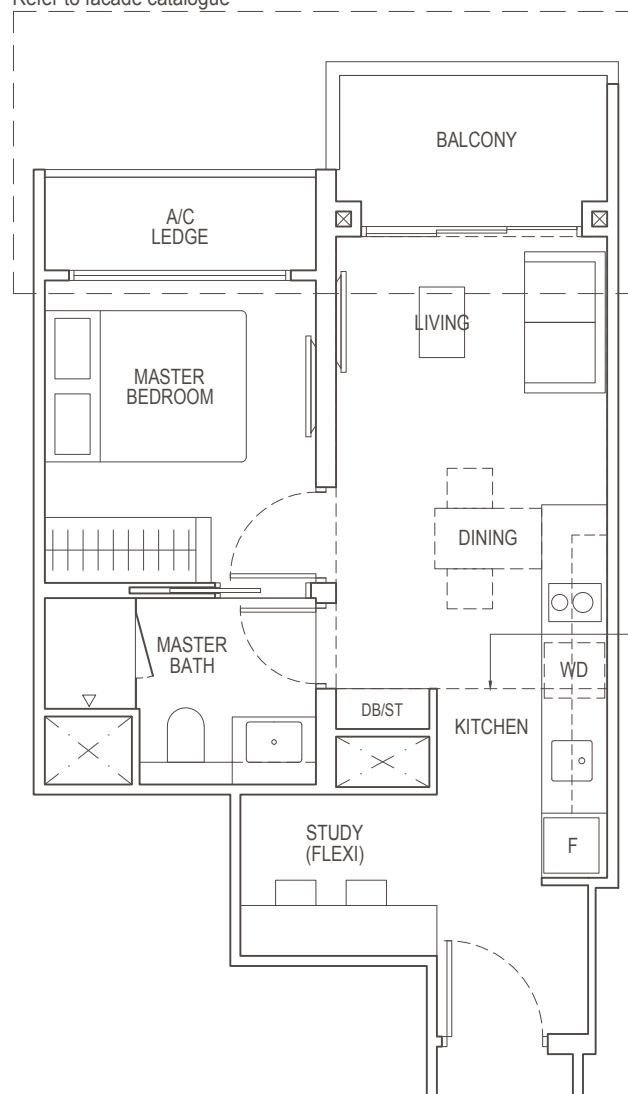
1-Bedroom + Study Loft

Type A3SL

60 sq m / 646 sq ft

Inclusive of strata void area of
14 sq m / 151 sq ft above Living & Dining
Block 2: #36-05

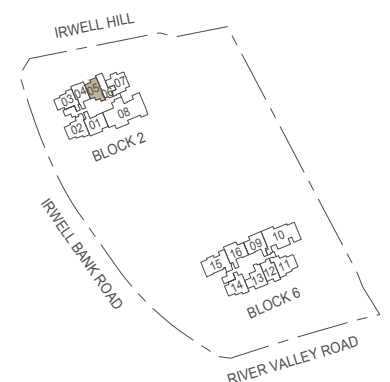
Refer to facade catalogue



Dotted line denotes strata void area above Living & Dining for Type A3SL



Area includes air-con (A/C) ledge, balcony and strata void area where applicable. The plans are subject to change as may be approved by relevant authorities. All floor plans are approximate measurements only and are subject to government re-survey. The balcony shall not be enclosed unless with the approved balcony screen. For an illustration of the approved balcony screen, please refer to the diagram annexed hereto as "Annexure 1".



Key plan is not drawn to scale.



2-Bedroom Classic

Type B1(b)

56 sq m / 603 sq ft

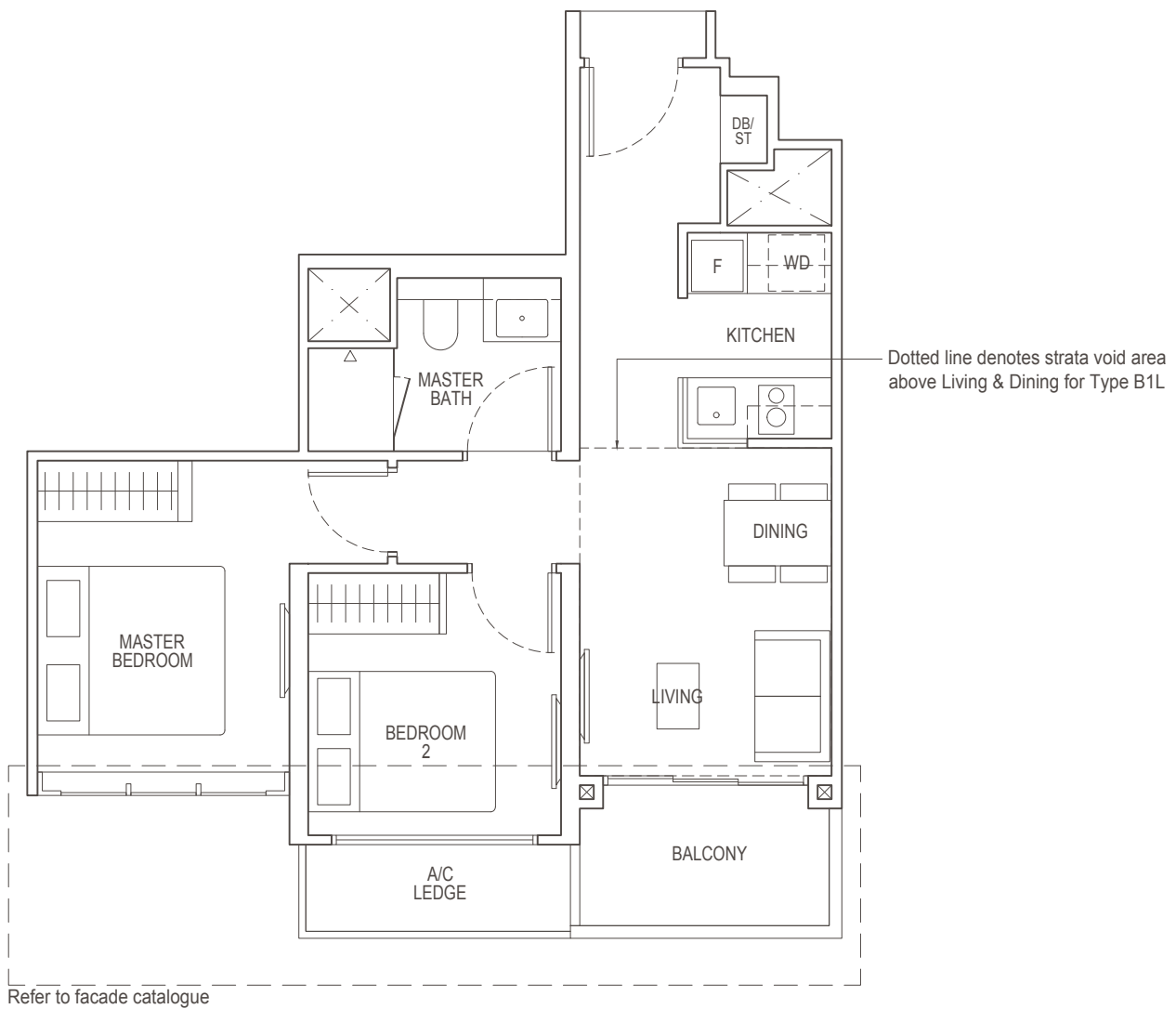
Block 6: #02-13 to #23-13, #25-13 to #35-13

2-Bedroom Classic Loft

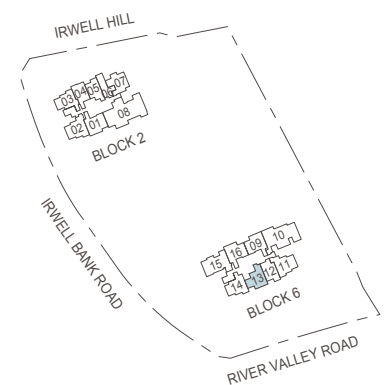
Type B1L

67 sq m / 721 sq ft

Inclusive of strata void area of
11 sq m / 118 sq ft above Living & Dining
Block 6 : #36-13



Area includes air-con (A/C) ledge, balcony and strata void area where applicable. The plans are subject to change as may be approved by relevant authorities. All floor plans are approximate measurements only and are subject to government re-survey. The balcony shall not be enclosed unless with the approved balcony screen. For an illustration of the approved balcony screen, please refer to the diagram annexed hereto as "Annexure 1".



Key plan is not drawn to scale.

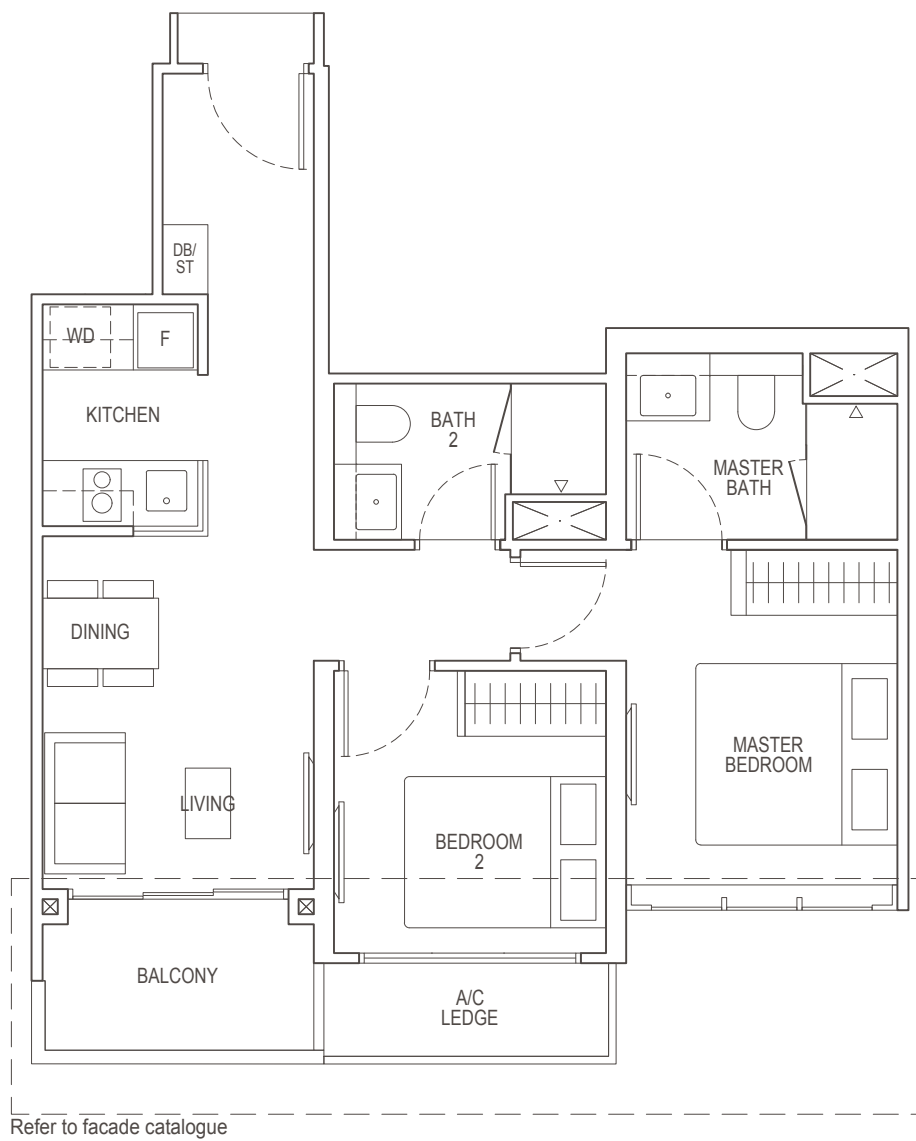


2-Bedroom Premium

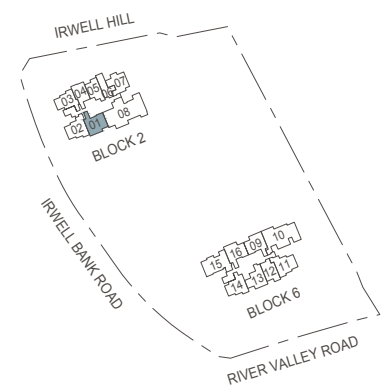
Type B5(b)

61 sq m / 657 sq ft

Block 2: #02-01 to #23-01, #25-01 to #35-01



Area includes air-con (A/C) ledge, balcony and strata void area where applicable. The plans are subject to change as may be approved by relevant authorities. All floor plans are approximate measurements only and are subject to government re-survey. The balcony shall not be enclosed unless with the approved balcony screen. For an illustration of the approved balcony screen, please refer to the diagram annexed hereto as "Annexure 1".



Key plan is not drawn to scale.



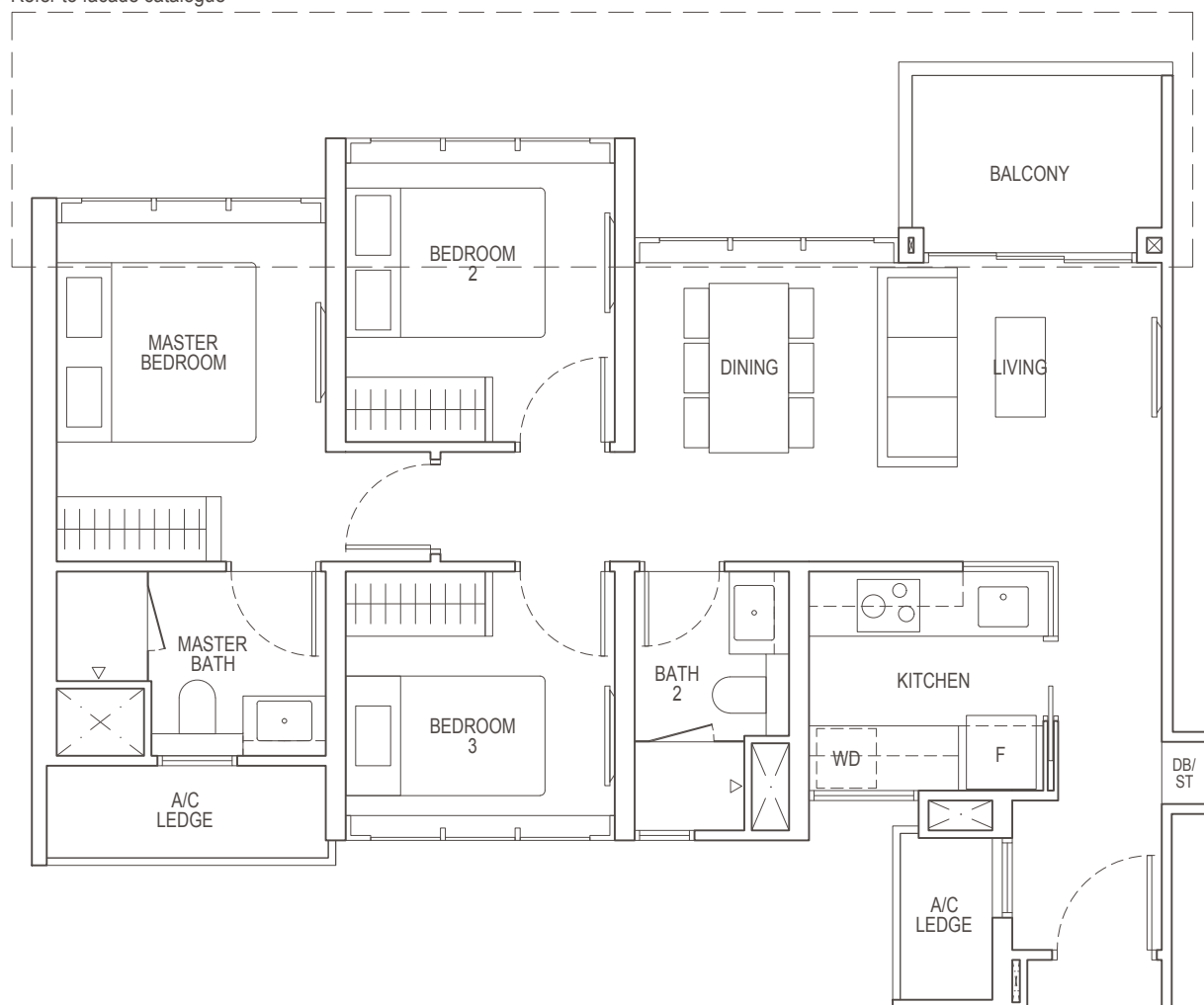
3-Bedroom Classic

Type C1(b)

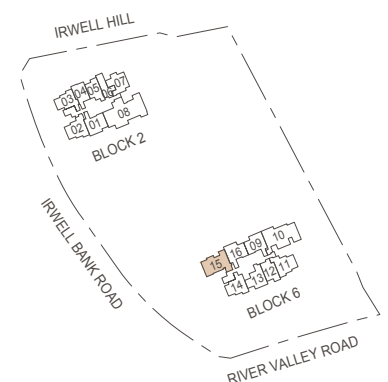
80 sq m / 861 sq ft

Block 6: #02-15 to #23-15, #25-15 to #35-15

Refer to facade catalogue



Area includes air-con (A/C) ledge, balcony and strata void area where applicable. The plans are subject to change as may be approved by relevant authorities. All floor plans are approximate measurements only and are subject to government re-survey. The balcony shall not be enclosed unless with the approved balcony screen. For an illustration of the approved balcony screen, please refer to the diagram annexed hereto as "Annexure 1".



Key plan is not drawn to scale.

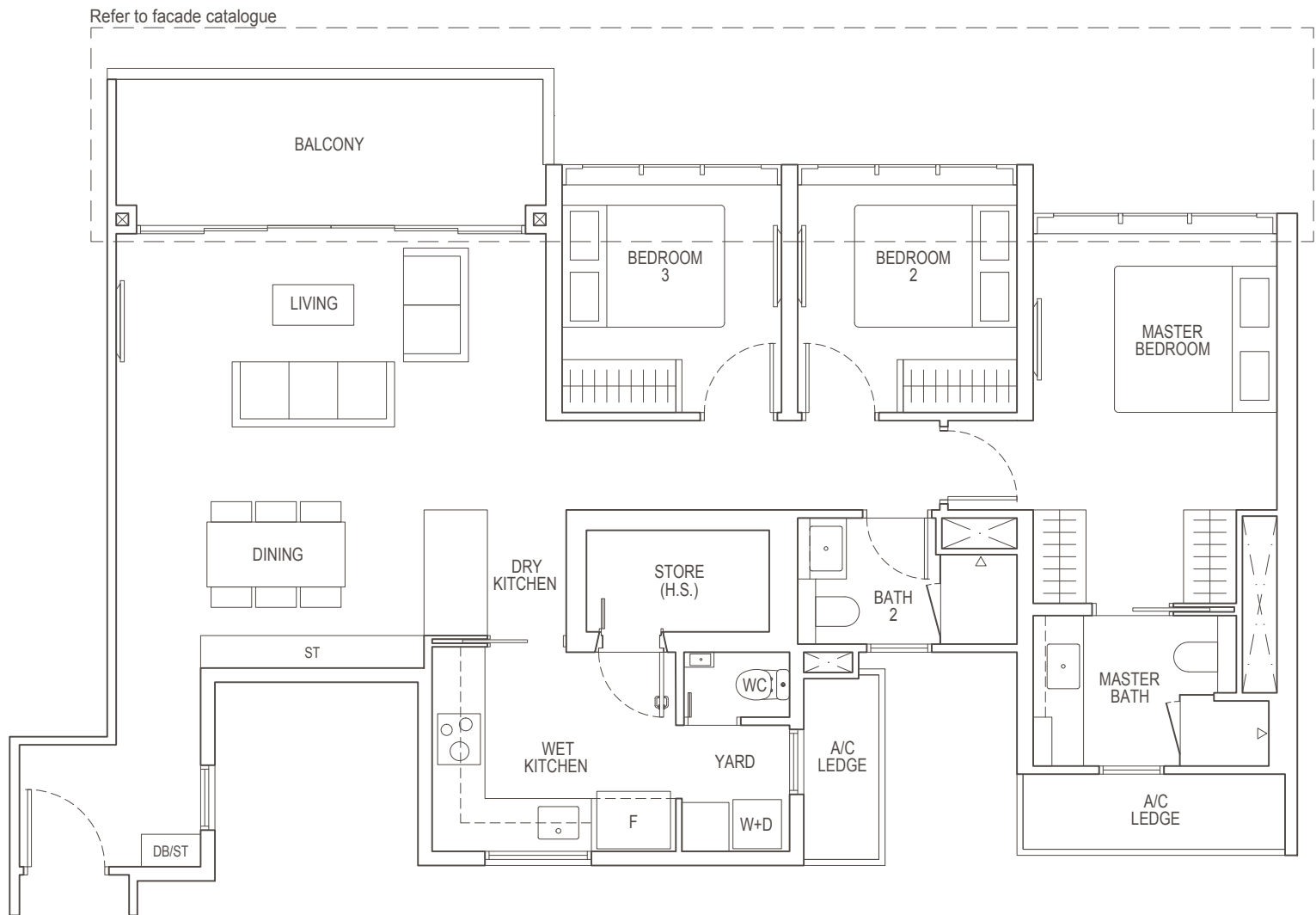


3-Bedroom Premium

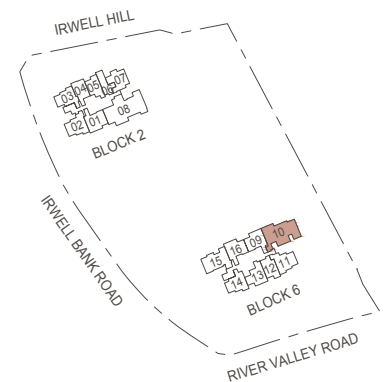
Type C2(b)

118 sq m / 1270 sq ft

Block 6: #02-10 to #23-10, #25-10 to #35-10



Area includes air-con (A/C) ledge, balcony and strata void area where applicable. The plans are subject to change as may be approved by relevant authorities. All floor plans are approximate measurements only and are subject to government re-survey. The balcony shall not be enclosed unless with the approved balcony screen. For an illustration of the approved balcony screen, please refer to the diagram annexed hereto as "Annexure 1".



Key plan is not drawn to scale.

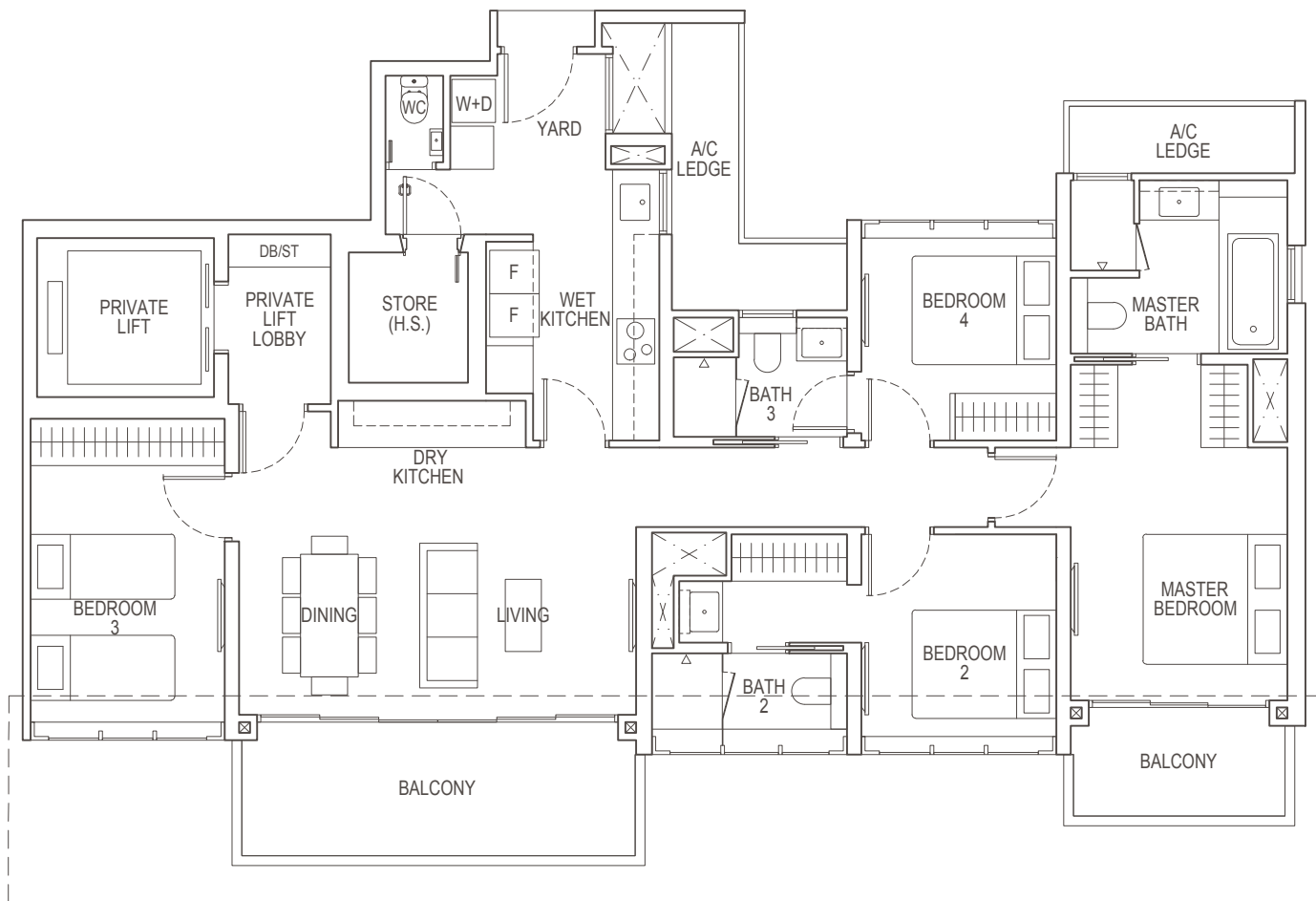


4-Bedroom Premium

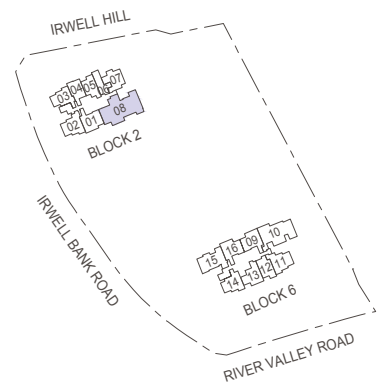
Type D2(b)


147 sq m / 1582 sq ft

Block 2: #02-08 to #04-08, #08-08, #10-08 to #16-08
#19-08 to #22-08, #25-08 to #29-08, #31-08



Refer to facade catalogue



Key plan is not drawn to scale. 

Area includes air-con (A/C) ledge, balcony and strata void area where applicable. The plans are subject to change as may be approved by relevant authorities. All floor plans are approximate measurements only and are subject to government re-survey. The balcony shall not be enclosed unless with the approved balcony screen. For an illustration of the approved balcony screen, please refer to the diagram annexed hereto as "Annexure 1".