

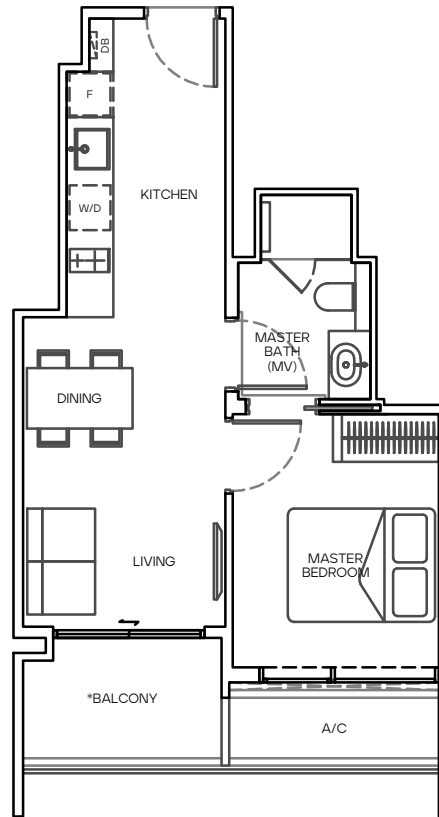
# TYPE A1

45 sqm

#02-02 to #08-02 (MIRROR)

#02-05 to #08-05

# 1 BEDROOM



All floor areas indicated are inclusive of AC Ledge, Balcony and Strata Void where applicable.  
All floor areas are estimate only and subject to final survey.  
All floor plans are subject to changes as may be required or approved by the relevant authorities.

\*The balcony shall not be enclosed unless with the approved balcony screen. For an illustration of the approved balcony screen, please refer to page XX of this brochure.

2ND TO 3RD STOREY KEY PLAN



GUILLEMARD ROAD

4TH TO 5TH STOREY KEY PLAN

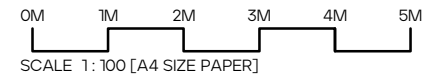


GUILLEMARD ROAD

6TH TO 8TH STOREY KEY PLAN



GUILLEMARD ROAD

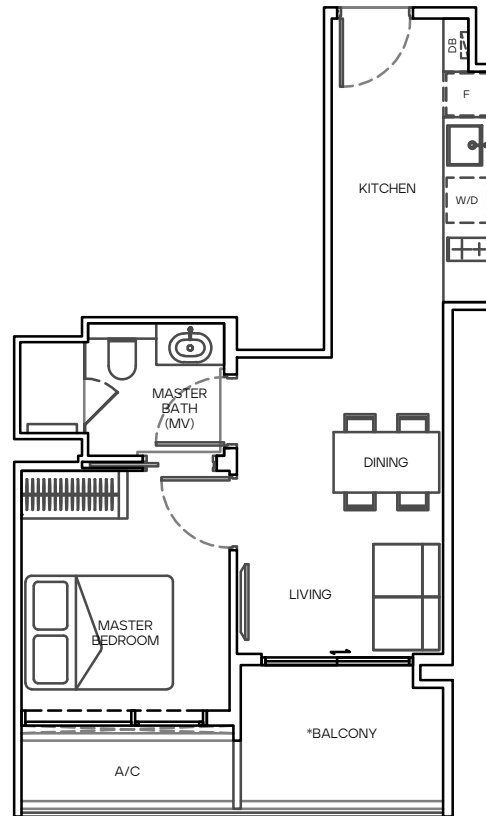


# TYPE A2

46 sqm

#02-06 to #08-06

# 1 BEDROOM



2ND TO 3RD STOREY KEY PLAN



GUILLEMARD ROAD

4TH TO 5TH STOREY KEY PLAN



GUILLEMARD ROAD

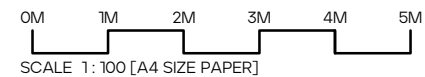
6TH TO 8TH STOREY KEY PLAN



GUILLEMARD ROAD

All floor areas indicated are inclusive of AC Ledge, Balcony and Strata Void where applicable.  
All floor areas are estimate only and subject to final survey.  
All floor plans are subject to changes as may be required or approved by the relevant authorities.

\*The balcony shall not be enclosed unless with the approved balcony screen. For an illustration of the approved balcony screen, please refer to page XX of this brochure.

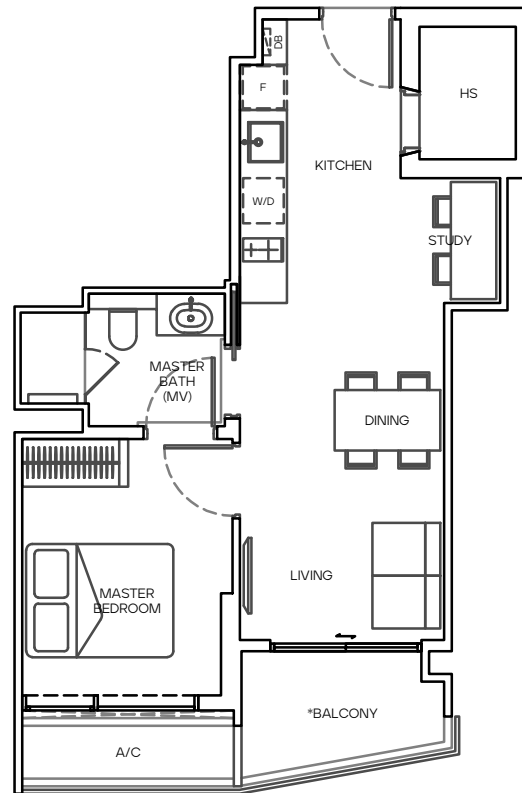


# TYPE B1

51 sqm

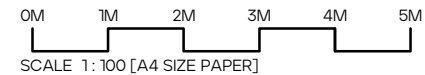
#04-20 to #05-20

# 1 BEDROOM + STUDY



All floor areas indicated are inclusive of AC Ledge, Balcony and Strata Void where applicable.  
All floor areas are estimate only and subject to final survey.  
All floor plans are subject to changes as may be required or approved by the relevant authorities.

\*The balcony shall not be enclosed unless with the approved balcony screen. For an illustration of the approved balcony screen, please refer to page XX of this brochure.

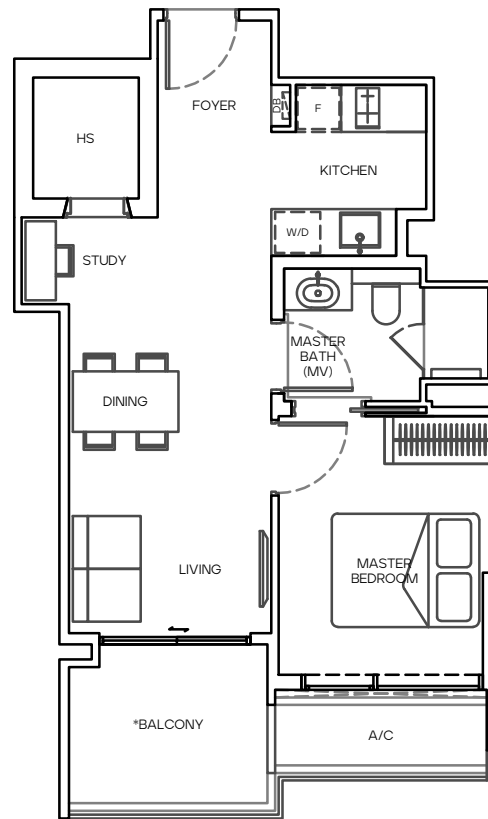


# TYPE B2

55 sqm

#02-01 to #08-01

# 1 BEDROOM + STUDY



All floor areas indicated are inclusive of AC Ledge, Balcony and Strata Void where applicable.  
All floor areas are estimate only and subject to final survey.  
All floor plans are subject to changes as may be required or approved by the relevant authorities.

\*The balcony shall not be enclosed unless with the approved balcony screen. For an illustration of the approved balcony screen, please refer to page XX of this brochure.

2ND TO 3RD STOREY KEY PLAN



GUILLEMARD ROAD

4TH TO 5TH STOREY KEY PLAN

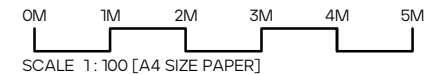


GUILLEMARD ROAD

6TH TO 8TH STOREY KEY PLAN



GUILLEMARD ROAD



# TYPE C1

66 sqm

#02-09 to #08-09

#02-10 to #08-10 (MIRROR)

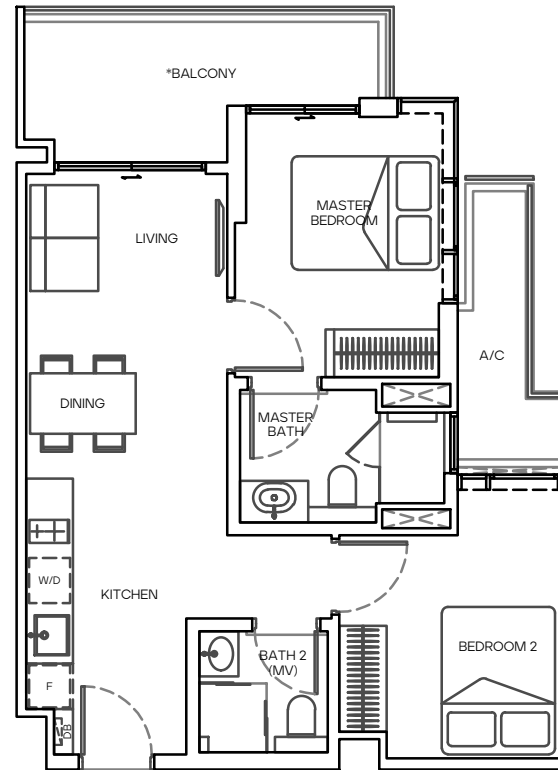
#02-11 to #08-11

#02-12 to #08-12 (MIRROR)

#02-13 to #08-13

#02-14 to #08-14 (MIRROR)

# 2 BEDROOM



All floor areas indicated are inclusive of AC Ledge, Balcony and Strata Void where applicable.  
All floor areas are estimate only and subject to final survey.  
All floor plans are subject to changes as may be required or approved by the relevant authorities.

\*The balcony shall not be enclosed unless with the approved balcony screen. For an illustration of the approved balcony screen, please refer to page XX of this brochure.

2ND TO 3RD STOREY KEY PLAN



GUILLEMARD ROAD

4TH TO 5TH STOREY KEY PLAN

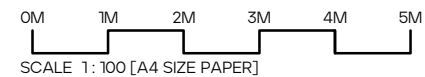


GUILLEMARD ROAD

6TH TO 8TH STOREY KEY PLAN



GUILLEMARD ROAD



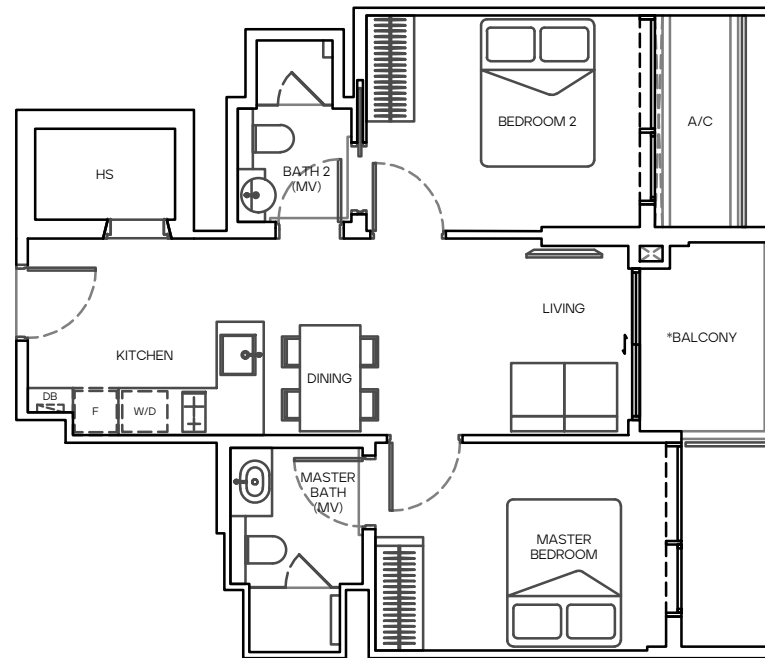
# TYPE C2

66 sqm

#01-01

#02-18 to #05-18

# 2 BEDROOM



All floor areas indicated are inclusive of AC Ledge, Balcony and Strata Void where applicable.  
All floor areas are estimate only and subject to final survey.  
All floor plans are subject to changes as may be required or approved by the relevant authorities.

\*The balcony shall not be enclosed unless with the approved balcony screen. For an illustration of the approved balcony screen, please refer to page XX of this brochure.

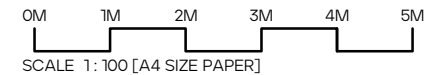
1ST STOREY KEY PLAN



2ND TO 3RD STOREY KEY PLAN



4TH TO 5TH STOREY KEY PLAN



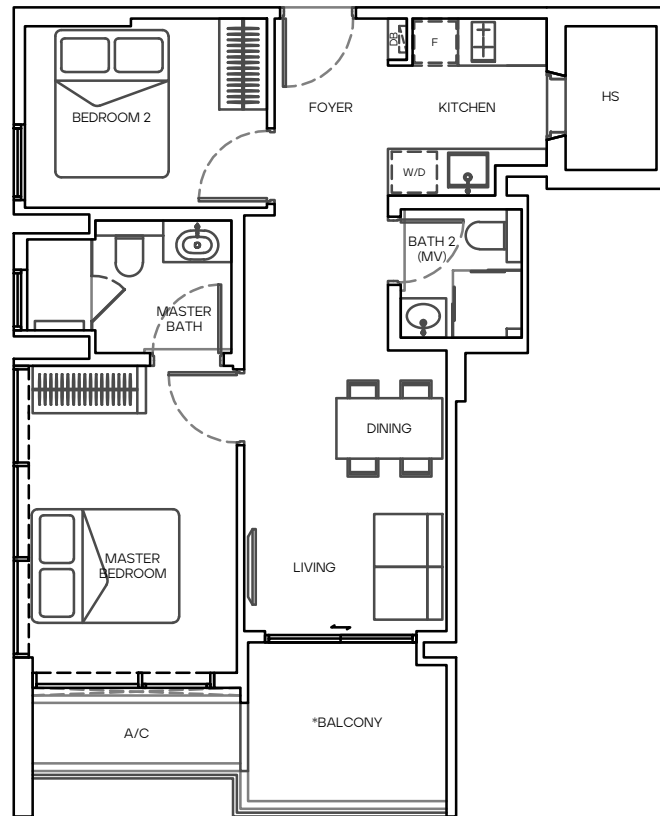
# TYPE C3

67 sqm

#02-03 to #08-03

#02-04 to #08-04 (MIRROR)

# 2 BEDROOM



All floor areas indicated are inclusive of AC Ledge, Balcony and Strata Void where applicable.  
All floor areas are estimate only and subject to final survey.  
All floor plans are subject to changes as may be required or approved by the relevant authorities.

\*The balcony shall not be enclosed unless with the approved balcony screen. For an illustration of the approved balcony screen, please refer to page XX of this brochure.

2ND TO 3RD STOREY KEY PLAN



GUILLEMARD ROAD

4TH TO 5TH STOREY KEY PLAN

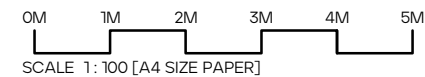


GUILLEMARD ROAD

8TH TO 8TH STOREY KEY PLAN



GUILLEMARD ROAD



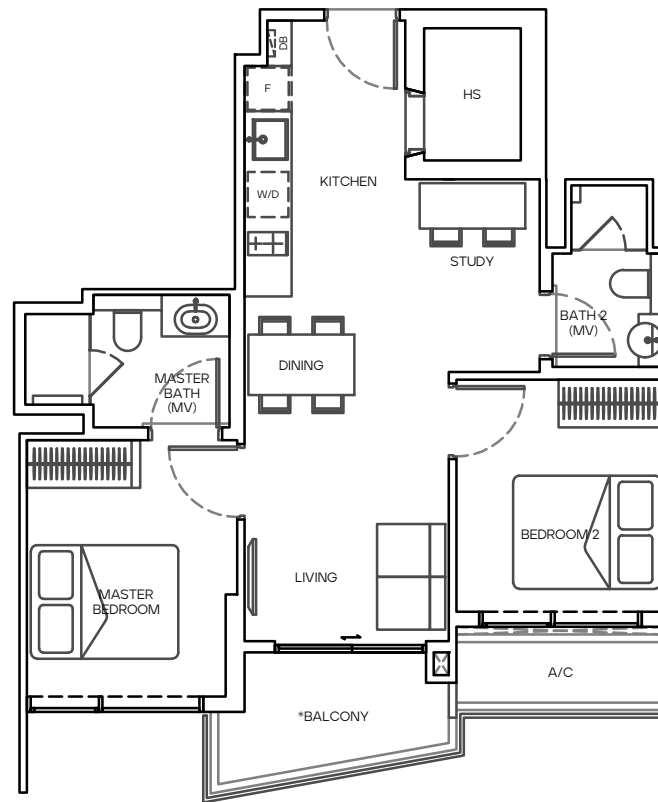
# TYPE D

67 sqm

#01-03

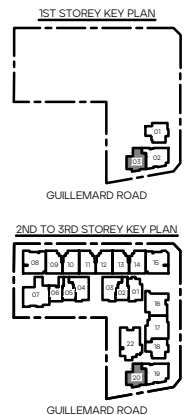
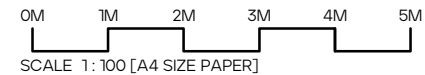
#02-20 to #03-20

# 2 BEDROOM + STUDY



All floor areas indicated are inclusive of AC Ledge, Balcony and Strata Void where applicable.  
All floor areas are estimate only and subject to final survey.  
All floor plans are subject to changes as may be required or approved by the relevant authorities.

\*The balcony shall not be enclosed unless with the approved balcony screen. For an illustration of the approved balcony screen, please refer to page XX of this brochure.





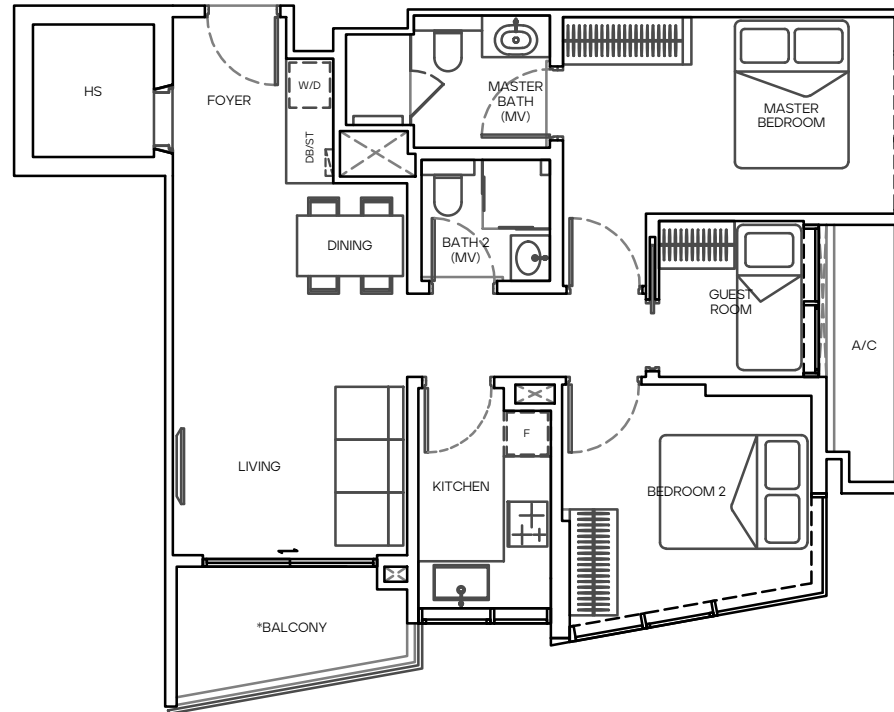
# TYPE E

82 sqm

#01-02

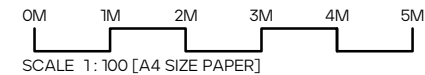
#02-19 to #03-19

# 2 BEDROOM + GUEST



All floor areas indicated are inclusive of AC Ledge, Balcony and Strata Void where applicable.  
All floor areas are estimate only and subject to final survey.  
All floor plans are subject to changes as may be required or approved by the relevant authorities.

\*The balcony shall not be enclosed unless with the approved balcony screen. For an illustration of the approved balcony screen, please refer to page XX of this brochure.

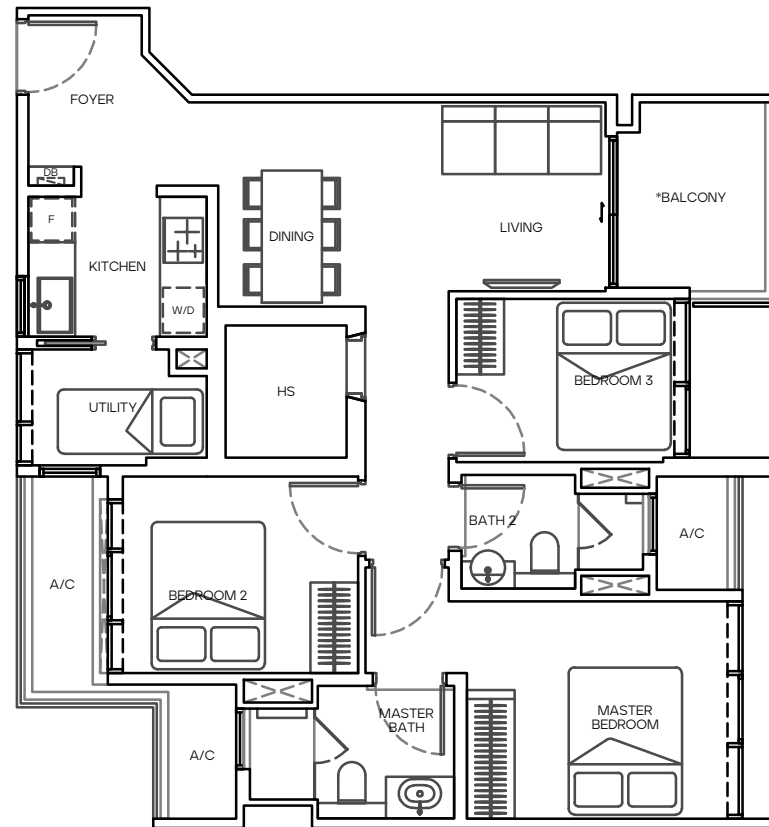


# TYPE F1

89 sqm

#02-16 to #08-16

# 3 BEDROOM



All floor areas indicated are inclusive of AC Ledge, Balcony and Strata Void where applicable.  
All floor areas are estimate only and subject to final survey.  
All floor plans are subject to changes as may be required or approved by the relevant authorities.

\*The balcony shall not be enclosed unless with the approved balcony screen. For an illustration of the approved balcony screen, please refer to page XX of this brochure.

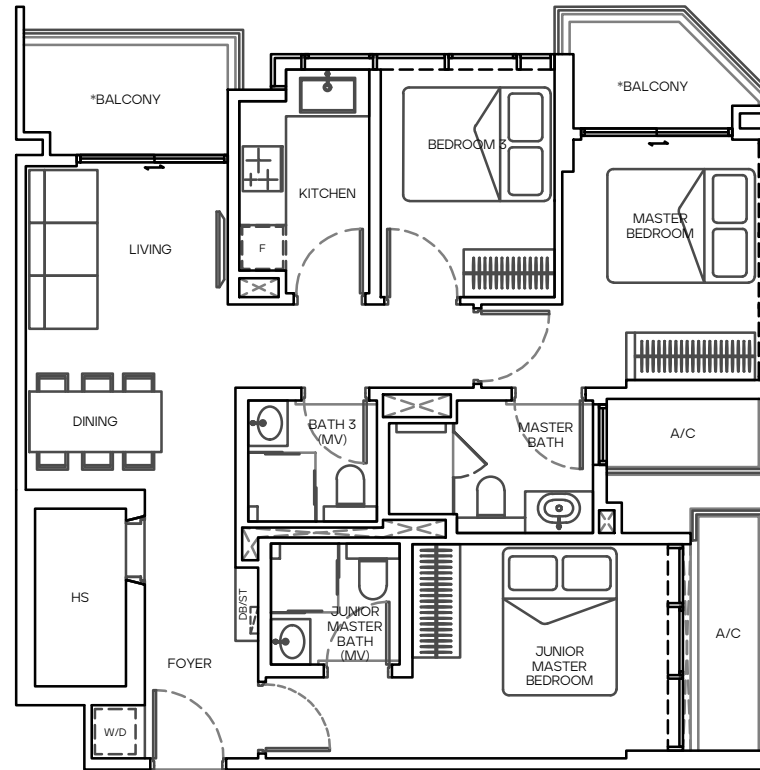


# TYPE F2

91 sqm

#02-15 to #08-15

# 3 BEDROOM



All floor areas indicated are inclusive of AC Ledge, Balcony and Strata Void where applicable.  
All floor areas are estimate only and subject to final survey.  
All floor plans are subject to changes as may be required or approved by the relevant authorities.

\*The balcony shall not be enclosed unless with the approved balcony screen. For an illustration of the approved balcony screen, please refer to page XX of this brochure.

2ND TO 3RD STOREY KEY PLAN



GUILLEMARD ROAD

4TH TO 5TH STOREY KEY PLAN

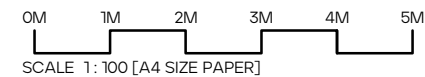


GUILLEMARD ROAD

6TH TO 8TH STOREY KEY PLAN



GUILLEMARD ROAD

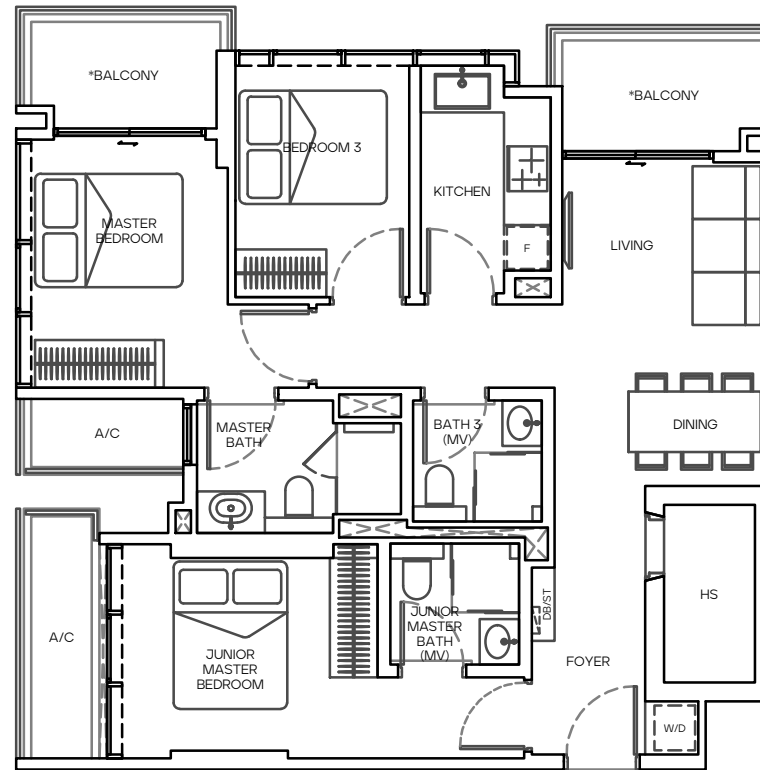


# TYPE F3

92 sqm

#02-08 to #08-08

# 3 BEDROOM



All floor areas indicated are inclusive of AC Ledge, Balcony and Strata Void where applicable.  
All floor areas are estimate only and subject to final survey.  
All floor plans are subject to changes as may be required or approved by the relevant authorities.

\*The balcony shall not be enclosed unless with the approved balcony screen. For an illustration of the approved balcony screen, please refer to page XX of this brochure.

2ND TO 3RD STOREY KEY PLAN



GUILLEMARD ROAD

4TH TO 5TH STOREY KEY PLAN

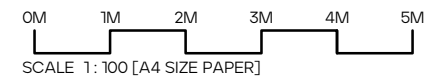


GUILLEMARD ROAD

8TH TO 8TH STOREY KEY PLAN



GUILLEMARD ROAD

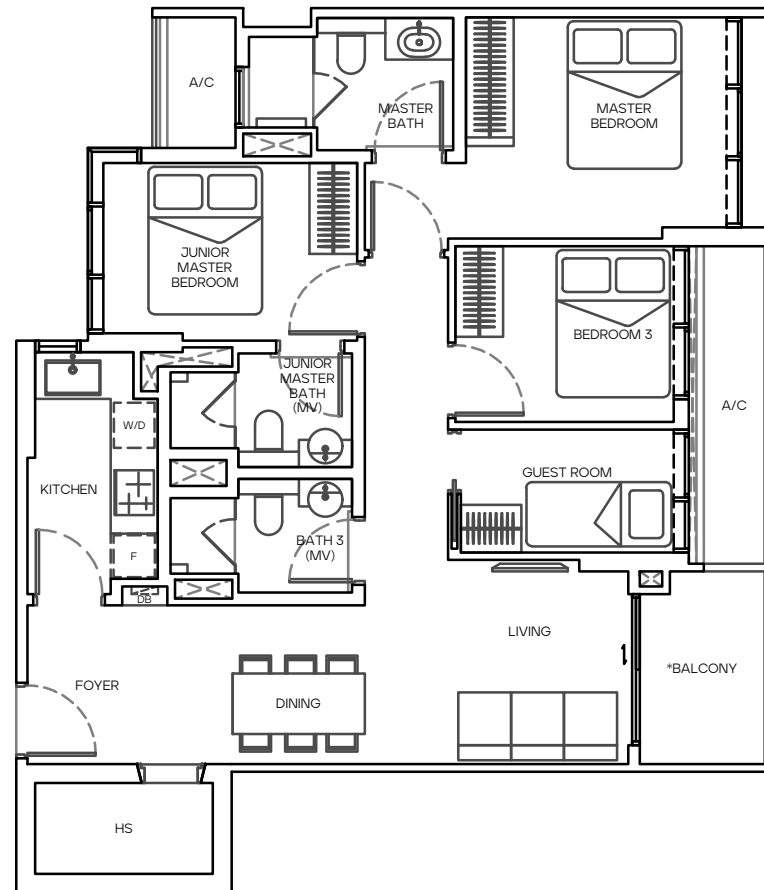


# TYPE G1

95 sqm

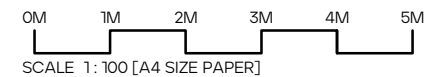
#02-17 to #05-17

# 3 BEDROOM + GUEST



All floor areas indicated are inclusive of AC Ledge, Balcony and Strata Void where applicable.  
All floor areas are estimate only and subject to final survey.  
All floor plans are subject to changes as may be required or approved by the relevant authorities.

\*The balcony shall not be enclosed unless with the approved balcony screen. For an illustration of the approved balcony screen, please refer to page XX of this brochure.



GUILLEMARD ROAD



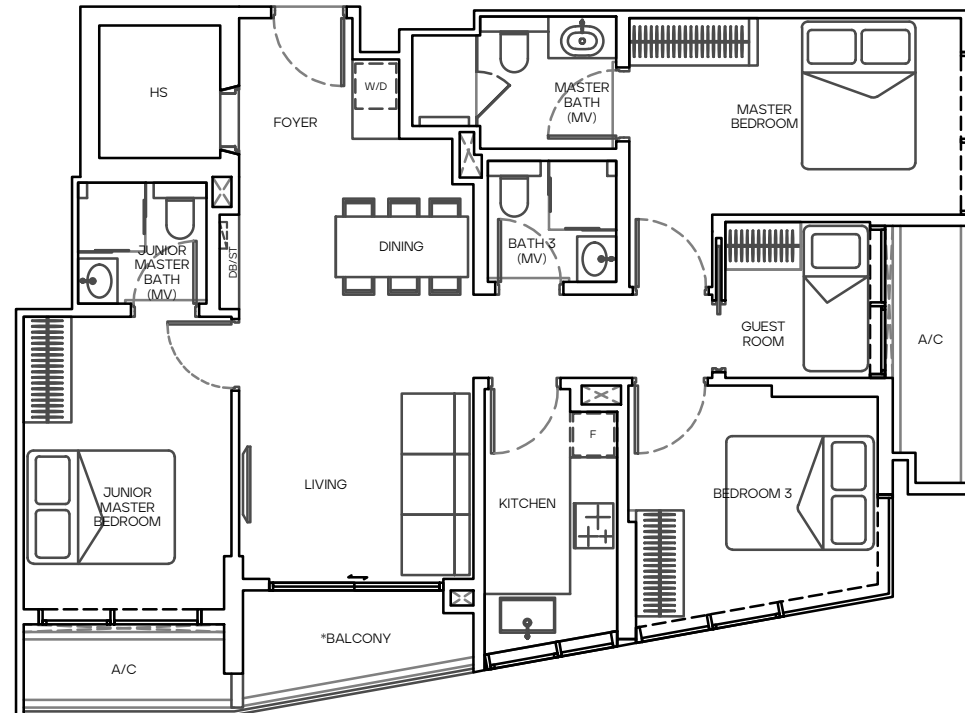
GUILLEMARD ROAD

# TYPE G2

102 sqm

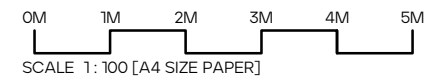
#04-19 to #05-19

# 3 BEDROOM + GUEST



All floor areas indicated are inclusive of AC Ledge, Balcony and Strata Void where applicable.  
All floor areas are estimate only and subject to final survey.  
All floor plans are subject to changes as may be required or approved by the relevant authorities.

\*The balcony shall not be enclosed unless with the approved balcony screen. For an illustration of the approved balcony screen, please refer to page XX of this brochure.

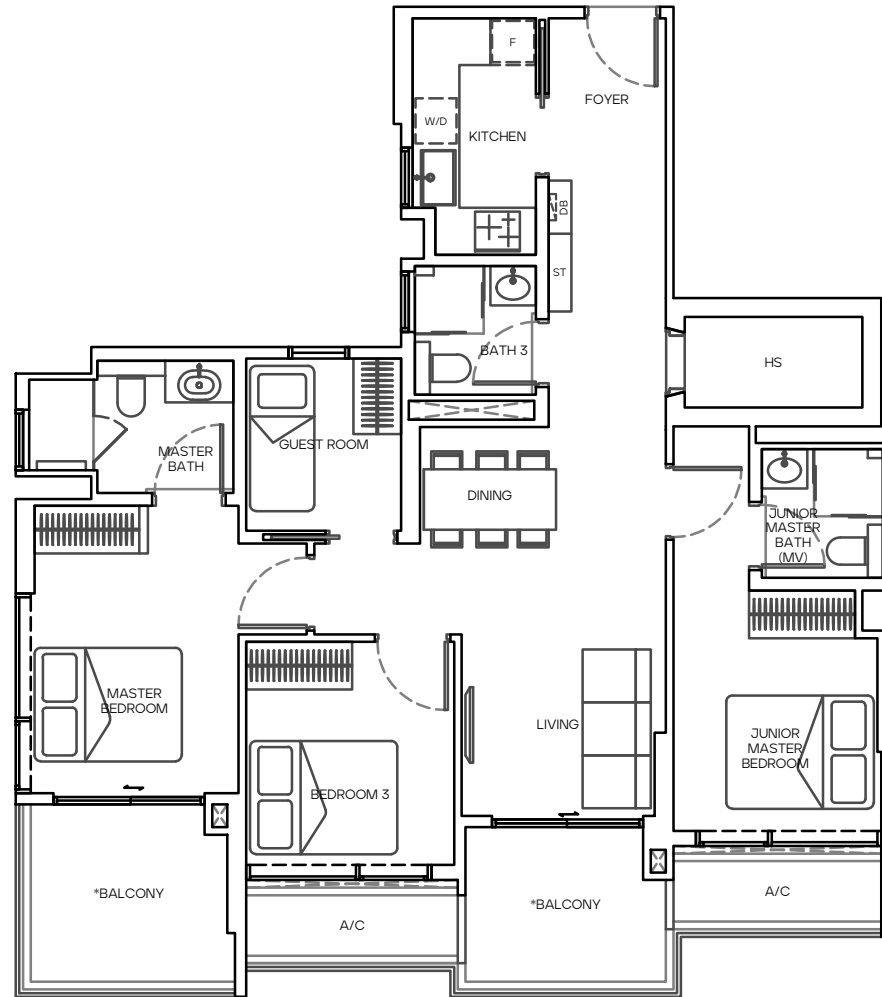


# TYPE G3

109 sqm

#02-07 to #08-07

# 3 BEDROOM + GUEST



2ND TO 3RD STOREY KEY PLAN



GUILLEMARD ROAD

4TH TO 5TH STOREY KEY PLAN



GUILLEMARD ROAD

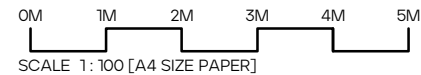
6TH TO 8TH STOREY KEY PLAN



GUILLEMARD ROAD

All floor areas indicated are inclusive of AC Ledge, Balcony and Strata Void where applicable.  
 All floor areas are estimate only and subject to final survey.  
 All floor plans are subject to changes as may be required or approved by the relevant authorities.

\*The balcony shall not be enclosed unless with the approved balcony screen. For an illustration of the approved balcony screen, please refer to page XX of this brochure.

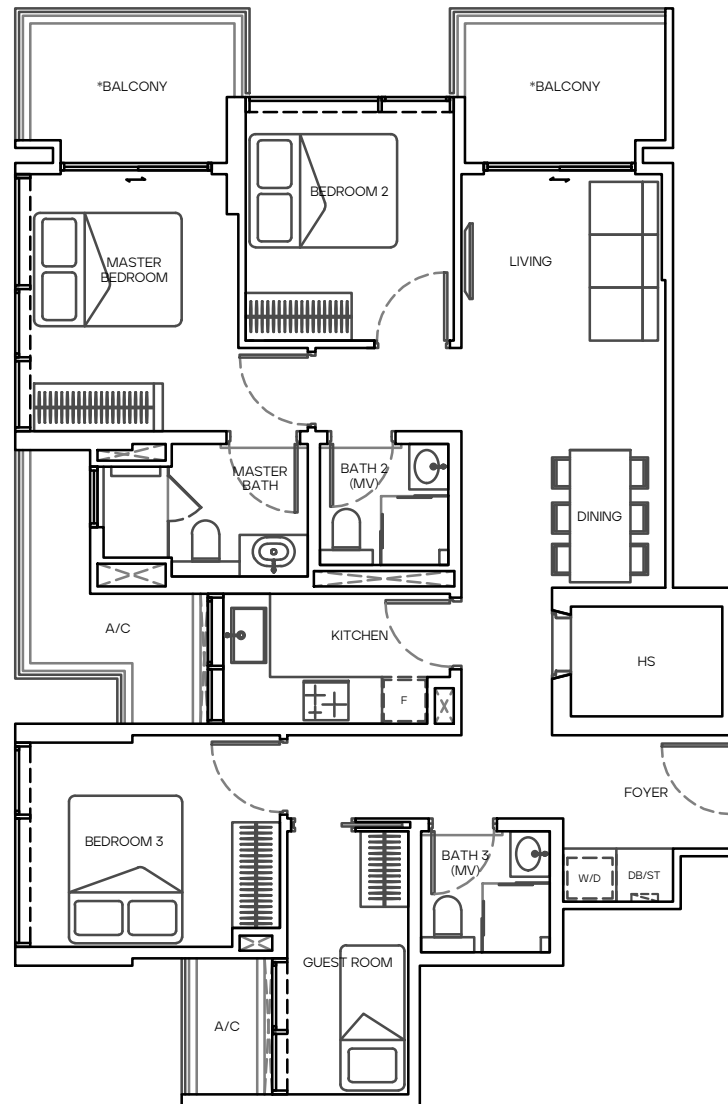


# TYPE G4

110 sqm

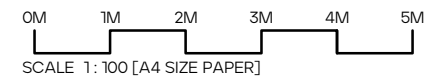
#02-22 to #05-22

# 3 BEDROOM + GUEST



All floor areas indicated are inclusive of AC Ledge, Balcony and Strata Void where applicable.  
 All floor areas are estimate only and subject to final survey.  
 All floor plans are subject to changes as may be required or approved by the relevant authorities.

\*The balcony shall not be enclosed unless with the approved balcony screen. For an illustration of the approved balcony screen, please refer to page XX of this brochure.



GUILLEMARD ROAD



GUILLEMARD ROAD

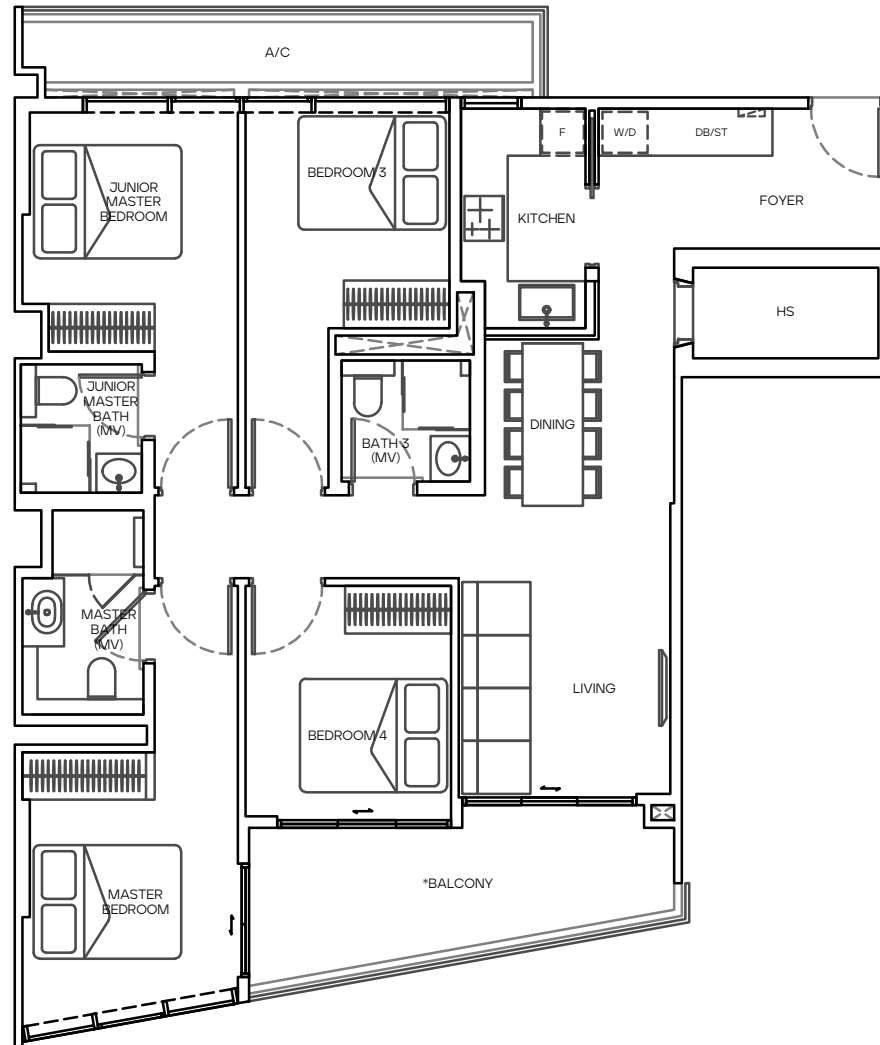


# TYPE H

117 sqm

#04-21 to #05-21

# 4 BEDROOM



All floor areas indicated are inclusive of AC Ledge, Balcony and Strata Void where applicable.  
All floor areas are estimate only and subject to final survey.  
All floor plans are subject to changes as may be required or approved by the relevant authorities.

\*The balcony shall not be enclosed unless with the approved balcony screen. For an illustration of the approved balcony screen, please refer to page XX of this brochure.

