

Unit Distribution Chart

PARC GREENWICH

TOWER 31				
UNIT FLOOR	01	02	03	04
14	C2-PH	C1-PH	C3-PH	C5-PH
13	C2	C1	C3	C5
12	C2	C1	C3	C5
11	C2	C1	C3	C5
10	C2	C1	C3	C5
9	C2	C1	C3	C5
8	C2	C1	C3	C5
7	C2	C1	C3	C5
6	C2	C1	C3	C5
5	C2	C1	C3	C5
4	C2	C1	C3	C5
3	C2	C1	C3	C5B
2	CLUBHOUSE			
1				

TOWER 33				
UNIT FLOOR	05	06	07	08
14	E1-PH	D2-PH	D2-PH	C5-PH
13	E1	D2	D2	C5
12	E1	D2	D2	C5
11	E1	D2	D2	C5
10	E1	D2	D2	C5
9	E1	D2	D2	C5
8	E1	D2	D2	C5
7	E1	D2	D2	C5
6	E1	D2	D2	C5
5	E1	D2	D2	C5
4	E1	D2	D2	C5
3	E1	D2	D2	C5
2	E1	D2	D2	C5
1	E1-P	D2-P	D2-P	C5-P

TOWER 39				
UNIT FLOOR	17	18	19	20
14	D1-PH	D2-PH	D2-PH	C5A-PH
13	D1	D2	D2	C5A
12	D1	D2	D2	C5A
11	D1	D2	D2	C5A
10	D1	D2	D2	C5A
9	D1	D2	D2	C5A
8	D1	D2	D2	C5A
7	D1	D2	D2	C5A
6	D1	D2	D2	C5A
5	D1	D2	D2	C5A
4	D1	D2	D2	C5A
3	D1	D2	D2	C5A
2	D1	D2	D2	C5A
1	D1-P	D2-P	D2-P	C5A-P

TOWER 41				
UNIT FLOOR	21	22	23	24
14	C3-PH	C4-PH	C5A-PH	C1-PH
13	C3	C4	C5A	C1
12	C3	C4	C5A	C1
11	C3	C4	C5A	C1
10	C3	C4	C5A	C1
9	C3	C4	C5A	C1
8	C3	C4	C5A	C1
7	C3	C4	C5A	C1
6	C3	C4	C5A	C1
5	C3	C4	C5A	C1
4	C3	C4	C5A	C1
3	C3	C4	C5A	C1
2	C3	C4	C5A	C1
1	C3-P	C4-P	C5A-P	C1-P

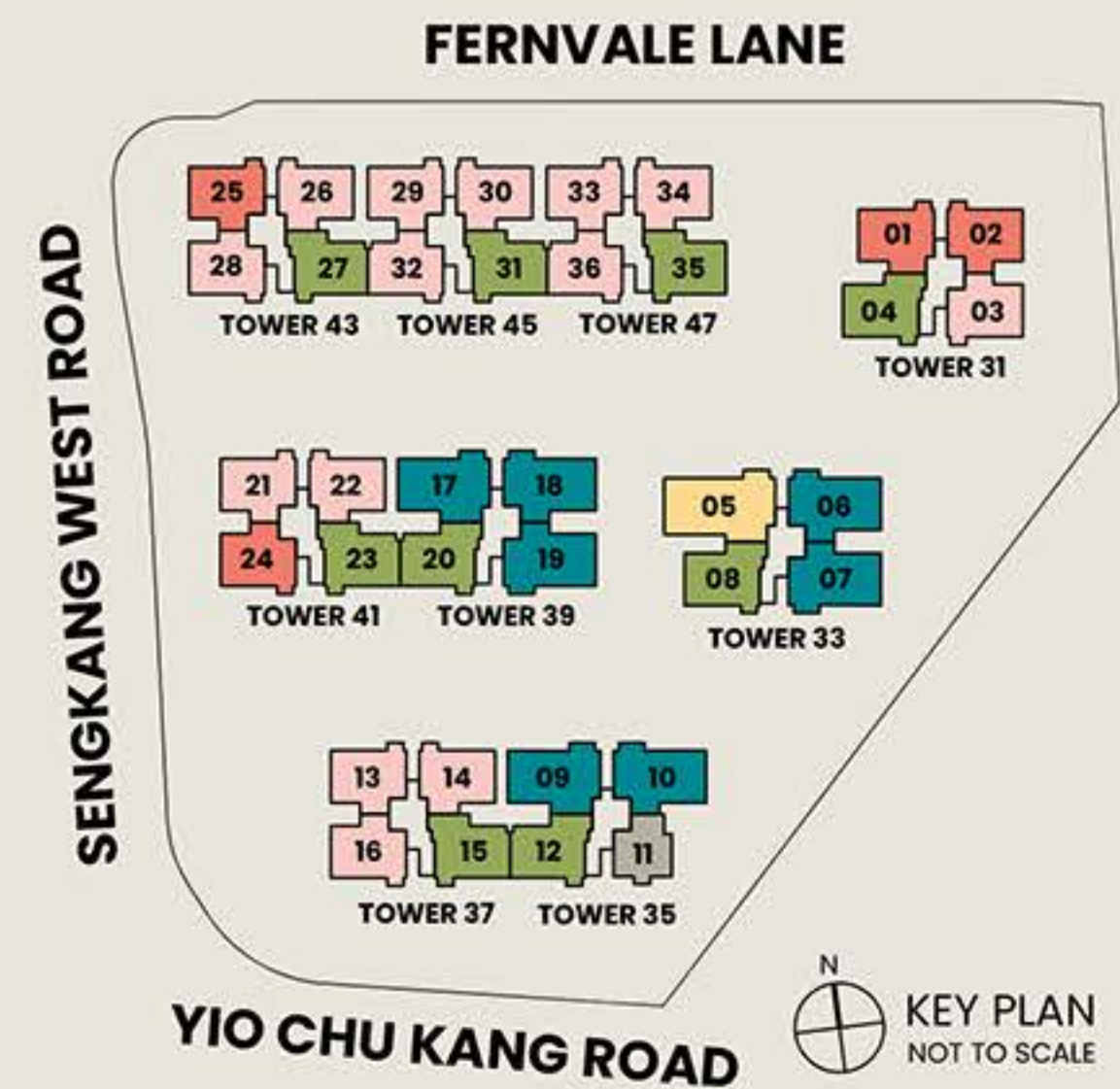
TOWER 45				
UNIT FLOOR	29	30	31	32
14	C3-PH	C4-PH	C5A-PH	C3A-PH
13	C3	C4	C5A	C3A
12	C3	C4	C5A	C3A
11	C3	C4	C5A	C3A
10	C3	C4	C5A	C3A
9	C3	C4	C5A	C3A
8	C3	C4	C5A	C3A
7	C3	C4	C5A	C3A
6	C3	C4	C5A	C3A
5	C3	C4	C5A	C3A
4	C3	C4	C5A	C3A
3	C3	C4	C5A	C3A
2	C3	C4	C5A	C3A
1	C3-P	C4-P	C5A-P	C3A-P

TOWER 47				
UNIT FLOOR	33	34	35	36
14	C3-PH	C4-PH	C5-PH	C3A-PH
13	C3	C4	C5	C3A
12	C3	C4	C5	C3A
11	C3	C4	C5	C3A
10	C3	C4	C5	C3A
9	C3	C4	C5	C3A
8	C3	C4	C5	C3A
7	C3	C4	C5	C3A
6	C3	C4	C5	C3A
5	C3	C4	C5	C3A
4	C3	C4	C5	C3A
3	C3	C4	C5	C3A
2	C3	C4	C5	C3A
1	C3-P	C4-P	C5-P	C3A-P

TOWER 35				
UNIT FLOOR	09	10	11	12
14	D1-PH	D2-PH	B1-PH	C5C-PH
13	D1	D2	B1	C5C
12	D1	D2	B1	C5C
11	D1	D2	B1	C5C
10	D1	D2	B1	C5C
9	D1	D2	B1	C5C
8	D1	D2	B1	C5C
7	D1	D2	B1	C5C
6	D1	D2	B1	C5C
5	D1	D2	B1	C5C
4	D1	D2	B1	C5C
3	D1	D2	B1	C5C
2	D1	D2	B1	C5C
1	D1-P	D2-P	B1-P	C5C-P

TOWER 37				
UNIT FLOOR	13	14	15	16
14	C3C-PH	C4-PH	C5C-PH	C3B-PH
13	C3C	C4	C5C	C3B
12	C3C	C4	C5C	C3B
11	C3C	C4	C5C	C3B
10	C3C	C4	C5C	C3B
9	C3C	C4	C5C	C3B
8	C3C	C4	C5C	C3B
7	C3C	C4	C5C	C3B
6	C3C	C4	C5C	C3B
5	C3C	C4	C5C	C3B
4	C3C	C4	C5C	C3B
3	C3C	C4	C5C	C3B
2	C3C	C4	C5C	C3B
1	C3C-P	C4-P	C5C-P	C3B-P

TOWER 43				
UNIT FLOOR	25	26	27	28
14	C1-PH	C4-PH	C5A-PH	C3-PH
13	C1	C4	C5A	C3
12	C1	C4	C5A	C3
11	C1	C4	C5A	C3
10	C1	C4	C5A	C3
9	C1	C4	C5A	C3
8	C1	C4	C5A	C3
7	C1	C4	C5A	C3
6	C1	C4	C5A	C3
5	C1	C4	C5A	C3
4	C1	C4	C5A	C3
3	C1	C4	C5A	C3
2	C1	C4	C5A	C3
1	C1-P	C4-P	C5A-P	C3-P



Legend

- 2 Bedroom
Deluxe
- 3 Bedroom
Deluxe
- 3 Bedroom
Premium
- 3 Bedroom
Premium with Study
- 4 Bedroom
Premium
- 5 Bedroom
Luxury

2 Bedroom Deluxe

TYPE B1-P

73 SQ M | 786 SQ FT

TOWER 35 | #01-11

TYPE B1

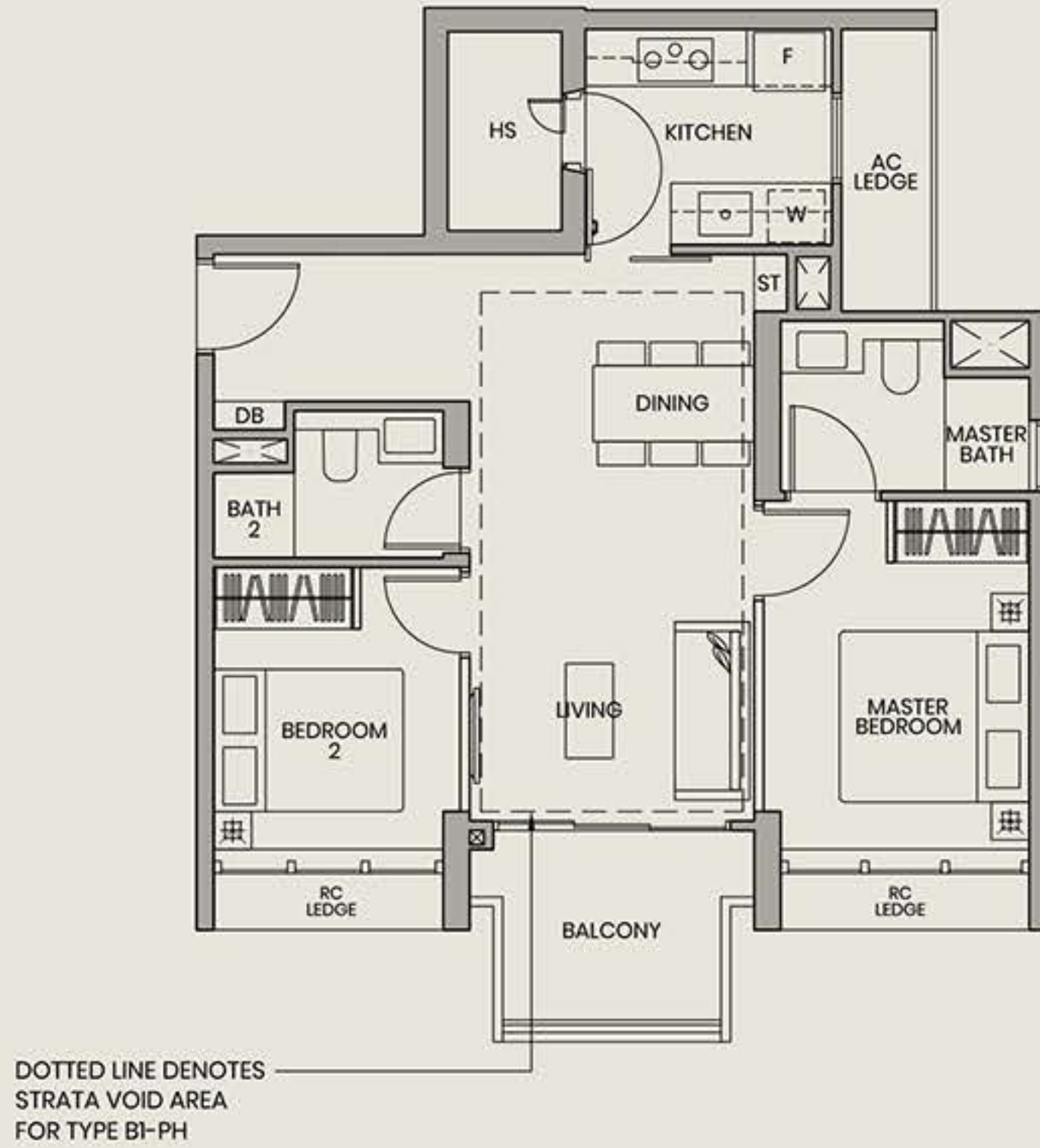
73 SQ M | 786 SQ FT

TOWER 35 | #02-11 TO #13-11

TYPE B1-PH

92 SQ M | 990 SQ FT
(INCLUSIVE OF 19 SQ M STRATA VOID OVER LIVING/DINING)

TOWER 35 | #14-11



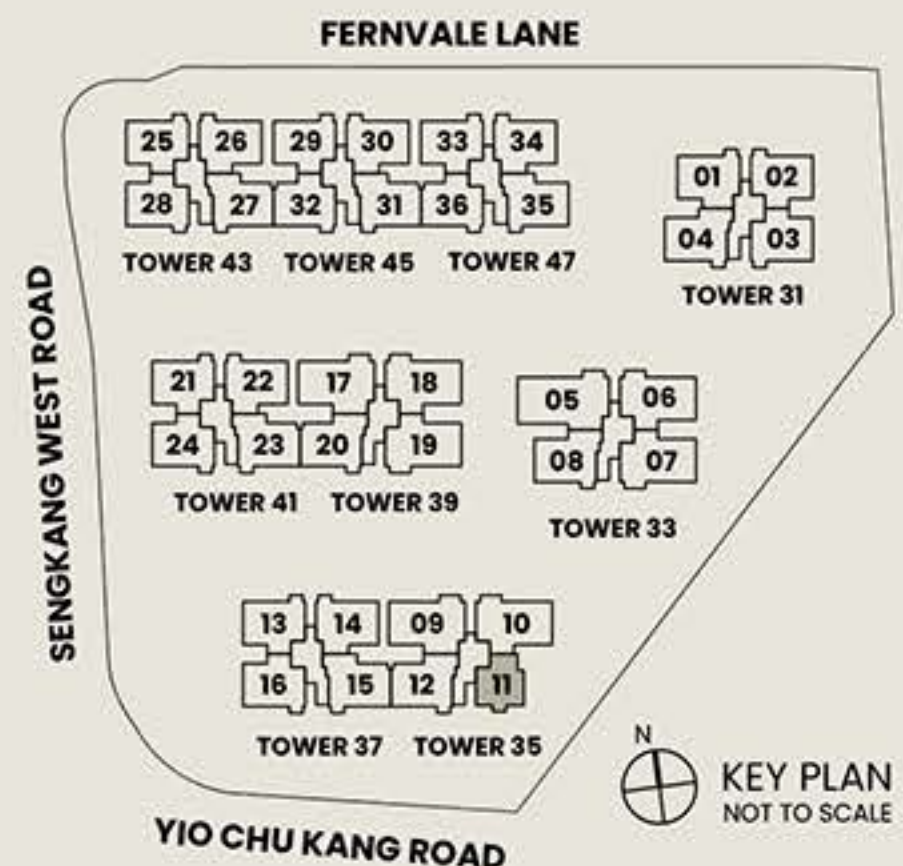
TYPE B1-P



Legend

Wall not allowed to be hacked or altered

- | | | | |
|----|--------------------|----|-------------------|
| F | Fridge | HS | Household Shelter |
| W | Washer | ST | Storage |
| DB | Distribution Board | | |



Area includes air conditioner (AC) ledge, balcony, PES and strata void where applicable. The above plans are subject to change as may be approved by the relevant authorities. All floor plans are approximate measurements only and are subject to government re-survey. The balcony shall not be enclosed unless with the approved balcony screen. The installation and cost of the screen shall be borne by the purchaser.

3 Bedroom Deluxe

TYPE C1-P

89 SQ M | 958 SQ FT

TOWER 41 | #01-24
TOWER 43 | #01-25*

TYPE C1

89 SQ M | 958 SQ FT

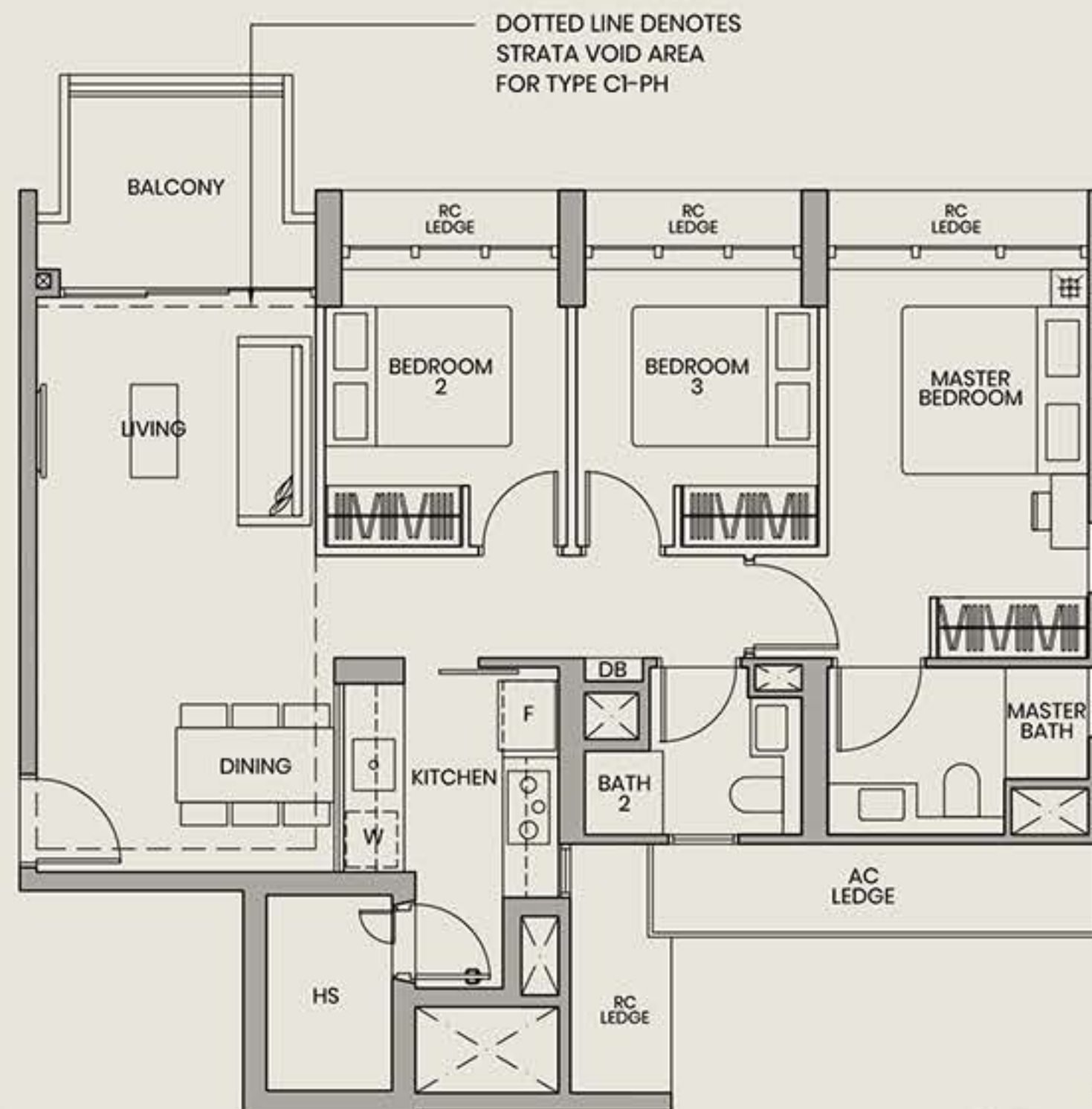
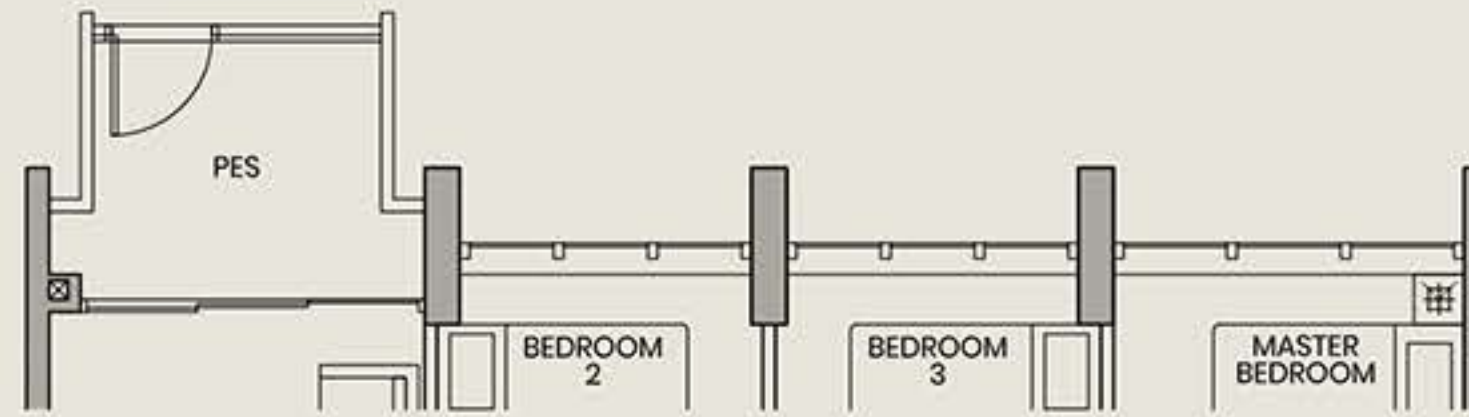
TOWER 31 | #03-02 TO #13-02
TOWER 41 | #02-24 TO #13-24
TOWER 43 | #02-25* TO #13-25*

TYPE C1-PH

109 SQ M | 1173 SQ FT
(INCLUSIVE OF 20 SQ M STRATA VOID OVER LIVING/DINING)

TOWER 31 | #14-02
TOWER 41 | #14-24
TOWER 43 | #14-25*

TYPE C1-P



PARC GREENWICH

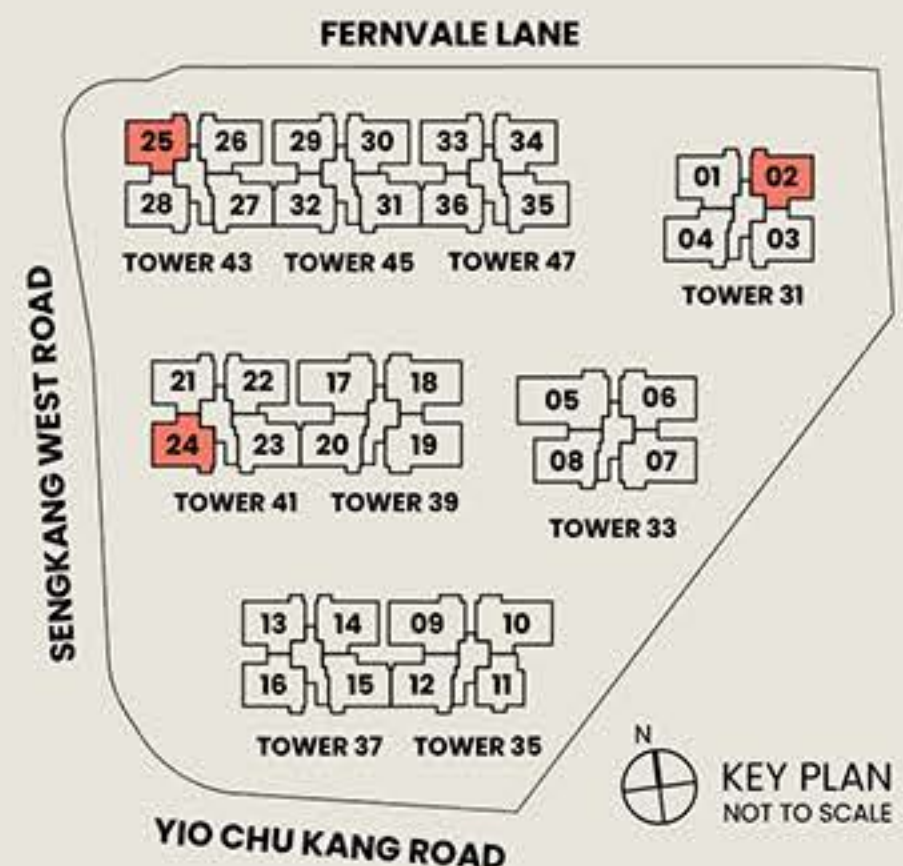


Legend

Wall not allowed to be hacked or altered

* Mirrored Unit

F Fridge DB Distribution Board
W Washer HS Household Shelter



Area includes air conditioner (AC) ledge, balcony, PES and strata void where applicable. The above plans are subject to change as may be approved by the relevant authorities. All floor plans are approximate measurements only and are subject to government re-survey. The balcony shall not be enclosed unless with the approved balcony screen. The installation and cost of the screen shall be borne by the purchaser.

3 Bedroom Deluxe

TYPE C2

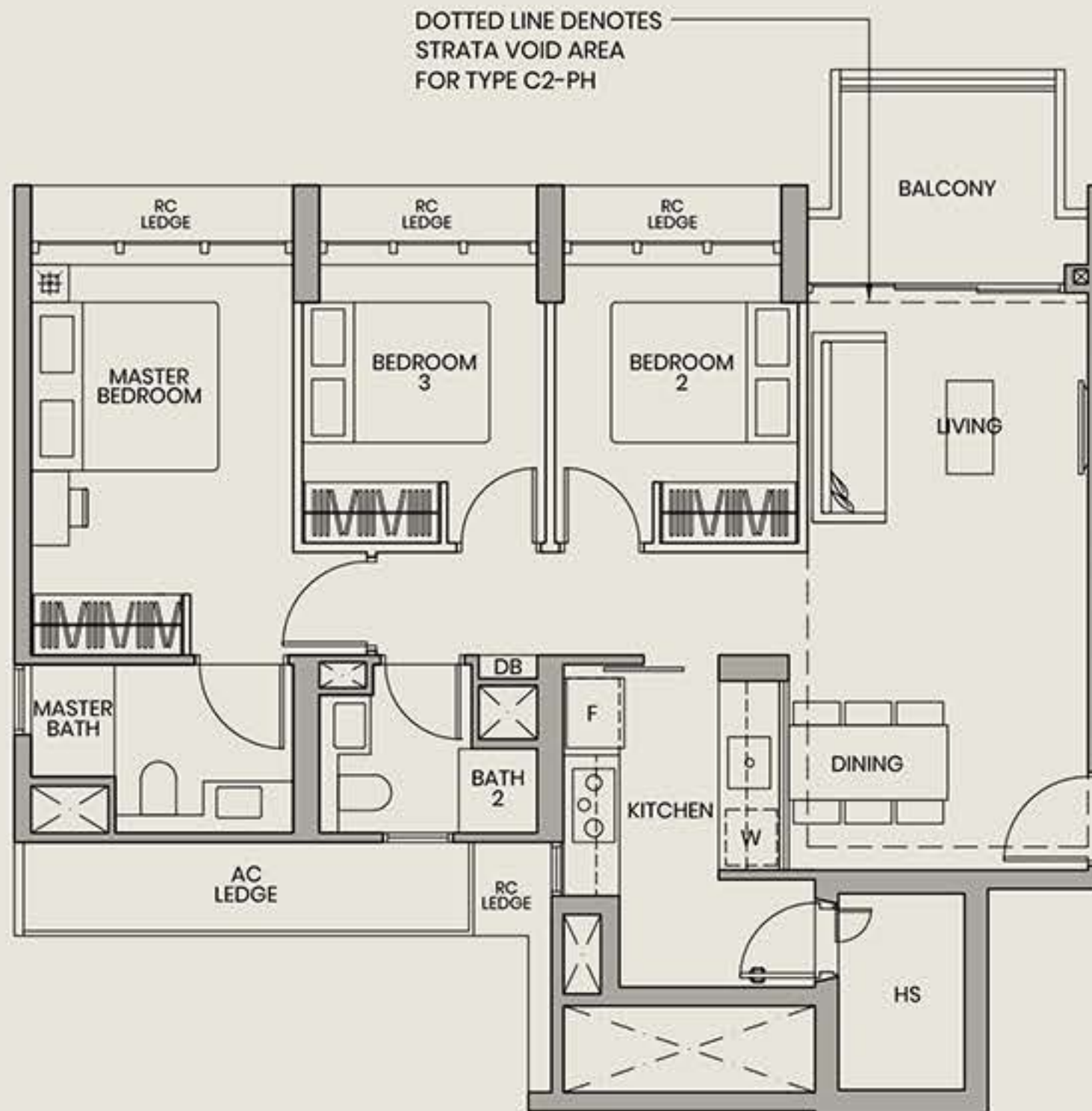
91 SQ M | 980 SQ FT

TOWER 31 | #03-01 TO #13-01

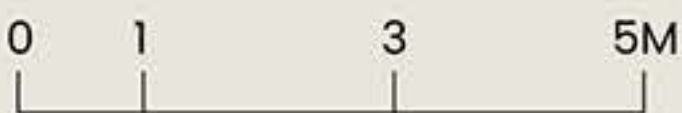
TYPE C2-PH

111 SQ M | 1195 SQ FT
(INCLUSIVE OF 20 SQ M STRATA VOID OVER LIVING/DINING)

TOWER 31 | #14-01



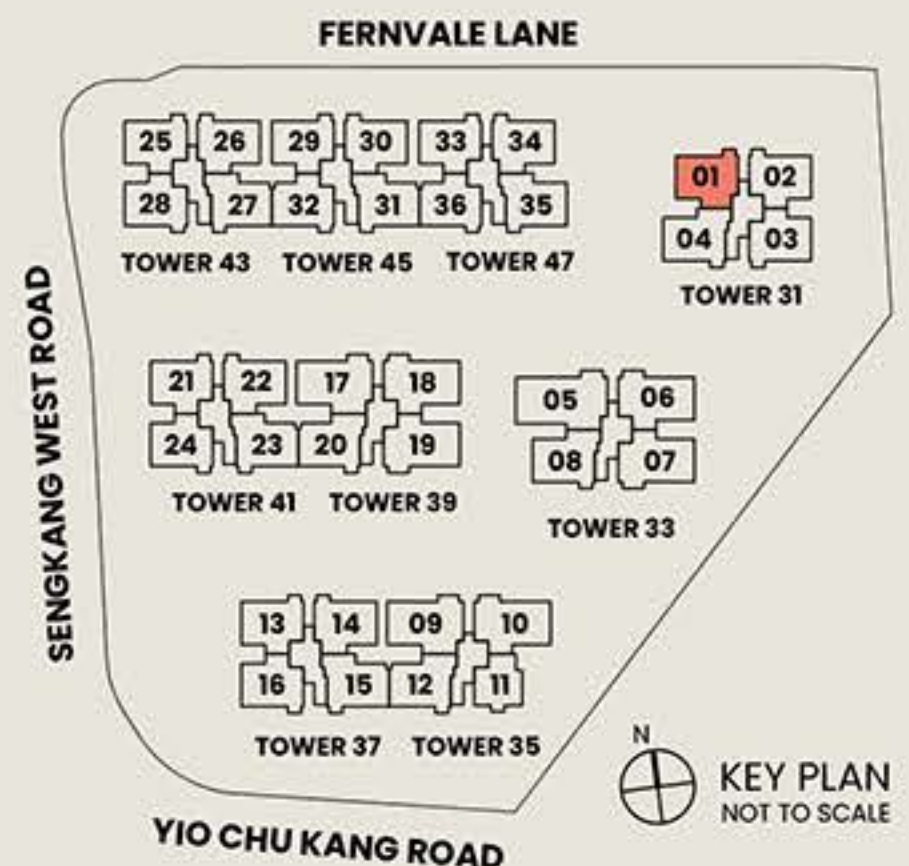
85



Legend

Wall not allowed to be hacked or altered

- F Fridge
- W Washer
- DB Distribution Board
- HS Household Shelter



Area includes air conditioner (AC) ledge, balcony, PES and strata void where applicable. The above plans are subject to change as may be approved by the relevant authorities. All floor plans are approximate measurements only and are subject to government re-survey. The balcony shall not be enclosed unless with the approved balcony screen. The installation and cost of the screen shall be borne by the purchaser.

3 Bedroom Premium

TYPE C3-P

93 SQ M | 1001 SQ FT

TOWER 41 | #01-21
 TOWER 43 | #01-28*
 TOWER 45 | #01-29
 TOWER 47 | #01-33

TYPE C3

93 SQ M | 1001 SQ FT

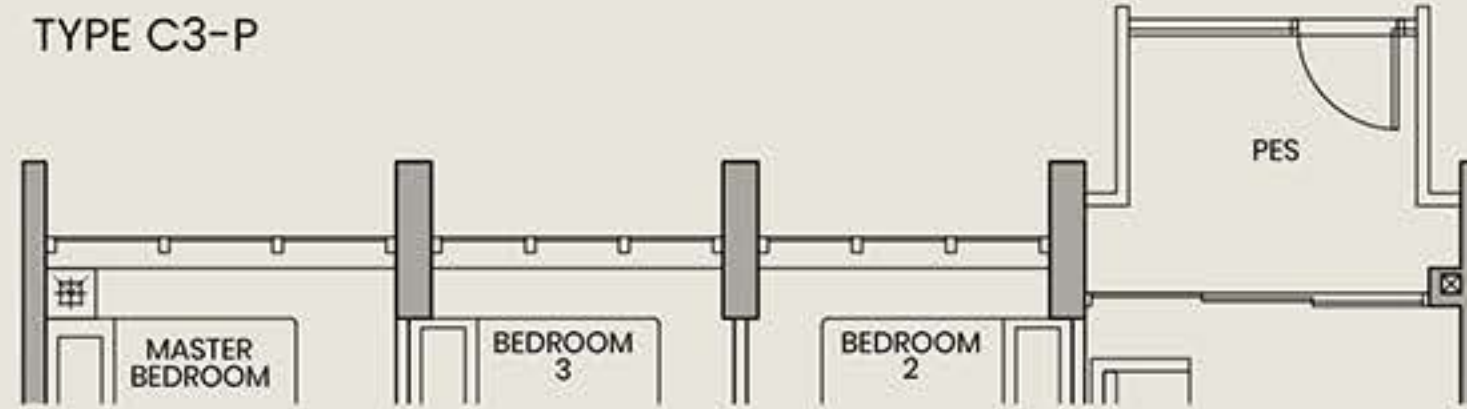
TOWER 31 | #03-03 TO #13-03
 TOWER 41 | #02-21 TO #13-21
 TOWER 43 | #02-28* TO #13-28*
 TOWER 45 | #02-29 TO #13-29
 TOWER 47 | #02-33 TO #13-33

TYPE C3-PH

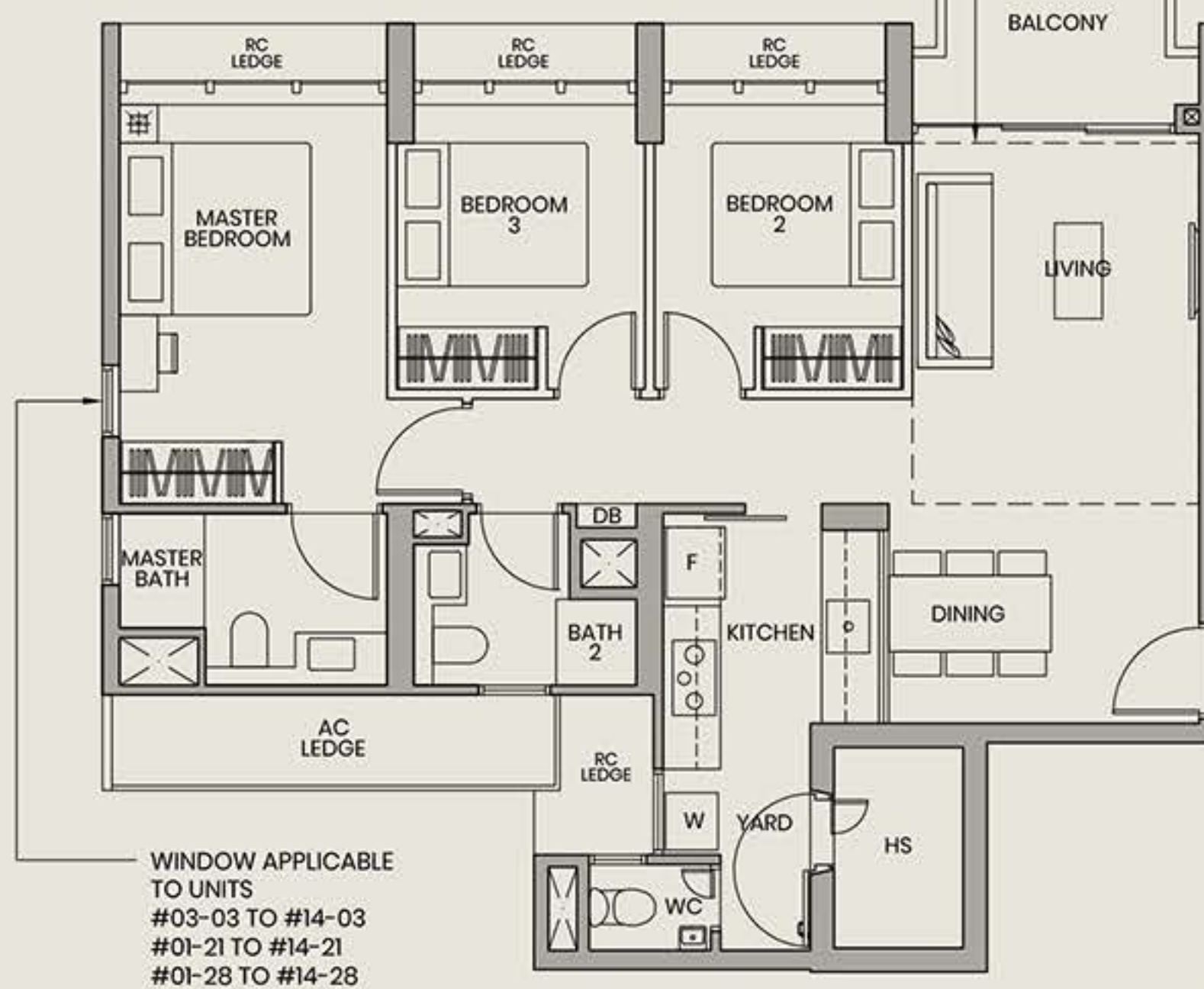
106 SQ M | 1141 SQ FT
 (INCLUSIVE OF 13 SQ M STRATA VOID
 OVER LIVING)

TOWER 31 | #14-03
 TOWER 41 | #14-21
 TOWER 43 | #14-28*
 TOWER 45 | #14-29
 TOWER 47 | #14-33

TYPE C3-P



DOTTED LINE DENOTES
 STRATA VOID AREA
 FOR TYPE C3-PH



WINDOW APPLICABLE
 TO UNITS
 #03-03 TO #14-03
 #01-21 TO #14-21
 #01-28 TO #14-28

PARC GREENWICH

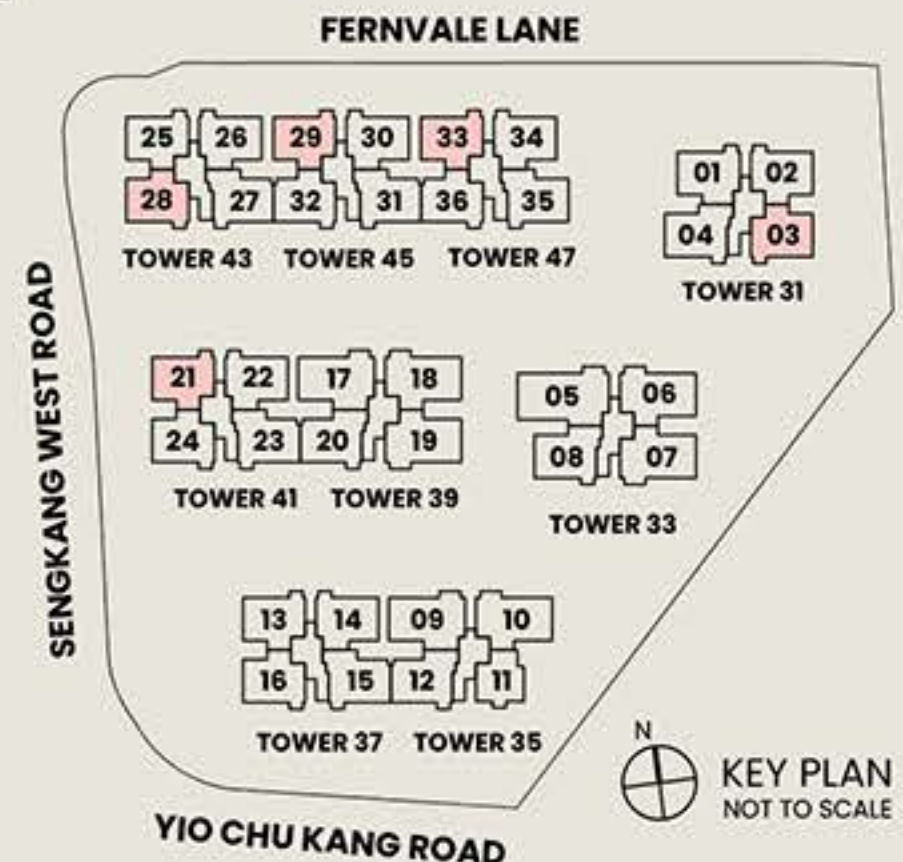


Legend

Wall not allowed to be hacked or altered

* Mirrored Unit

F Fridge DB Distribution Board
 W Washer HS Household Shelter



KEY PLAN
 NOT TO SCALE

Area includes air conditioner (AC) ledge, balcony, PES and strata void where applicable. The above plans are subject to change as may be approved by the relevant authorities. All floor plans are approximate measurements only and are subject to government re-survey. The balcony shall not be enclosed unless with the approved balcony screen. The installation and cost of the screen shall be borne by the purchaser.

3 Bedroom Premium

TYPE C3A-P

93 SQ M | 1001 SQ FT

TOWER 45 | #01-32
TOWER 47 | #01-36

TYPE C3A

93 SQ M | 1001 SQ FT

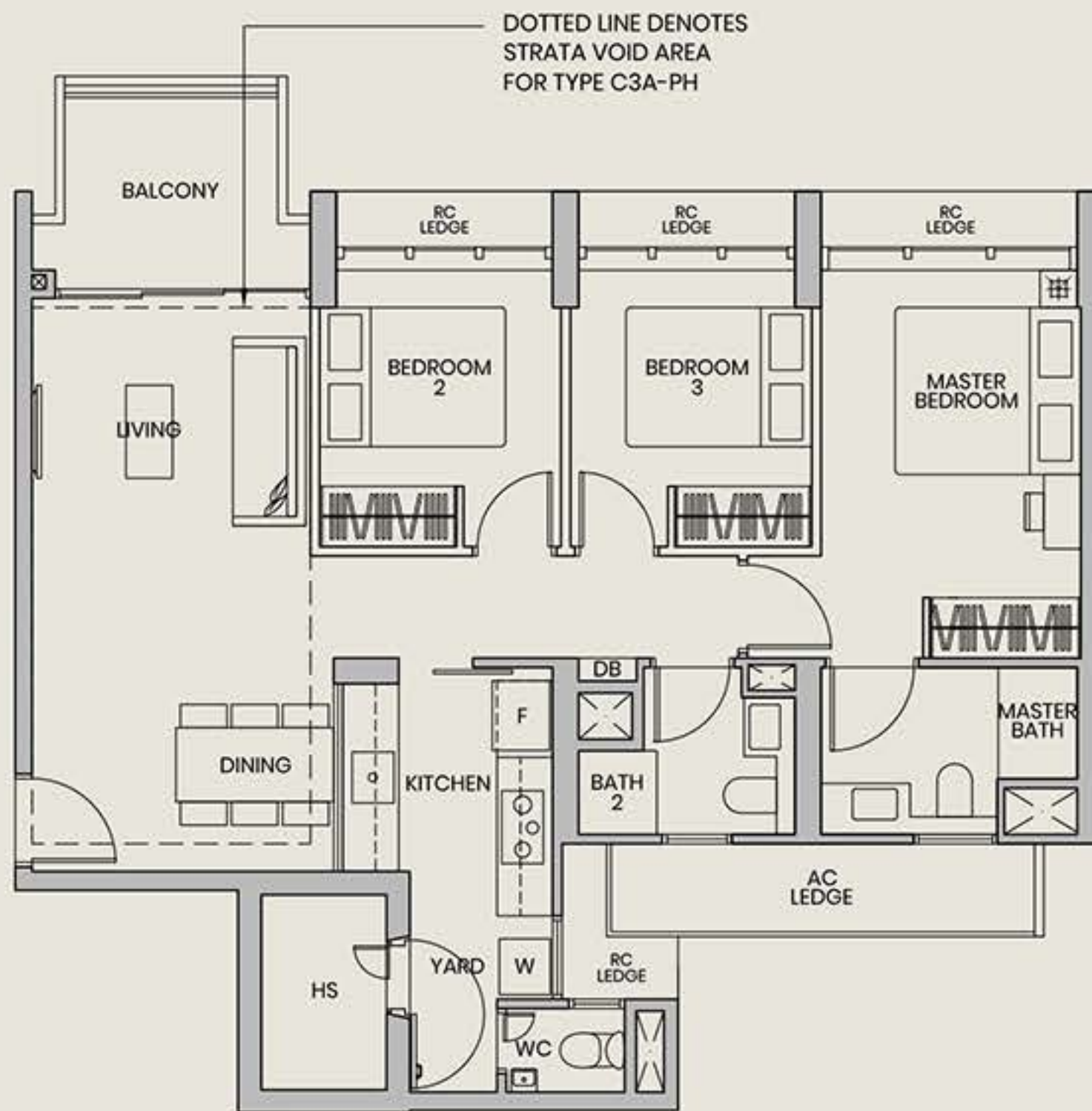
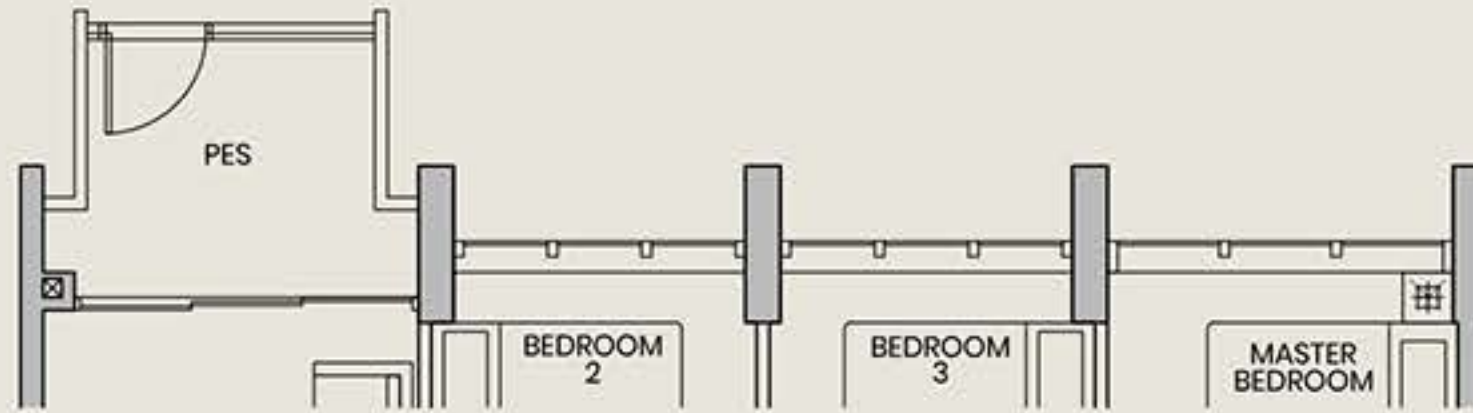
TOWER 45 | #02-32 TO #13-32
TOWER 47 | #02-36 TO #13-36

TYPE C3A-PH

113 SQ M | 1216 SQ FT
(INCLUSIVE OF 20 SQ M STRATA VOID OVER LIVING/DINING)

TOWER 45 | #14-32
TOWER 47 | #14-36

TYPE C3A-P



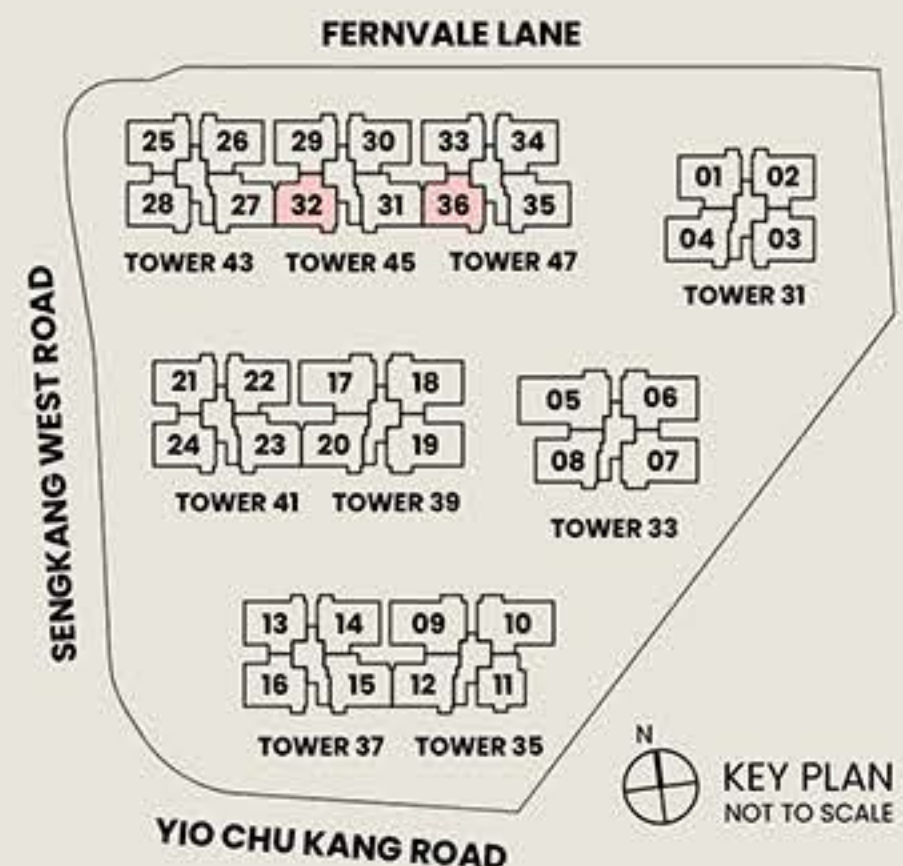
DOTTED LINE DENOTES STRATA VOID AREA FOR TYPE C3A-PH



Legend

Wall not allowed to be hacked or altered

F Fridge DB Distribution Board
W Washer HS Household Shelter



Area includes air conditioner (AC) ledge, balcony, PES and strata void where applicable. The above plans are subject to change as may be approved by the relevant authorities. All floor plans are approximate measurements only and are subject to government re-survey. The balcony shall not be enclosed unless with the approved balcony screen. The installation and cost of the screen shall be borne by the purchaser.

3 Bedroom Premium

TYPE C3B-P

93 SQ M | 1001 SQ FT

TOWER 37 | #01-16

TYPE C3B

93 SQ M | 1001 SQ FT

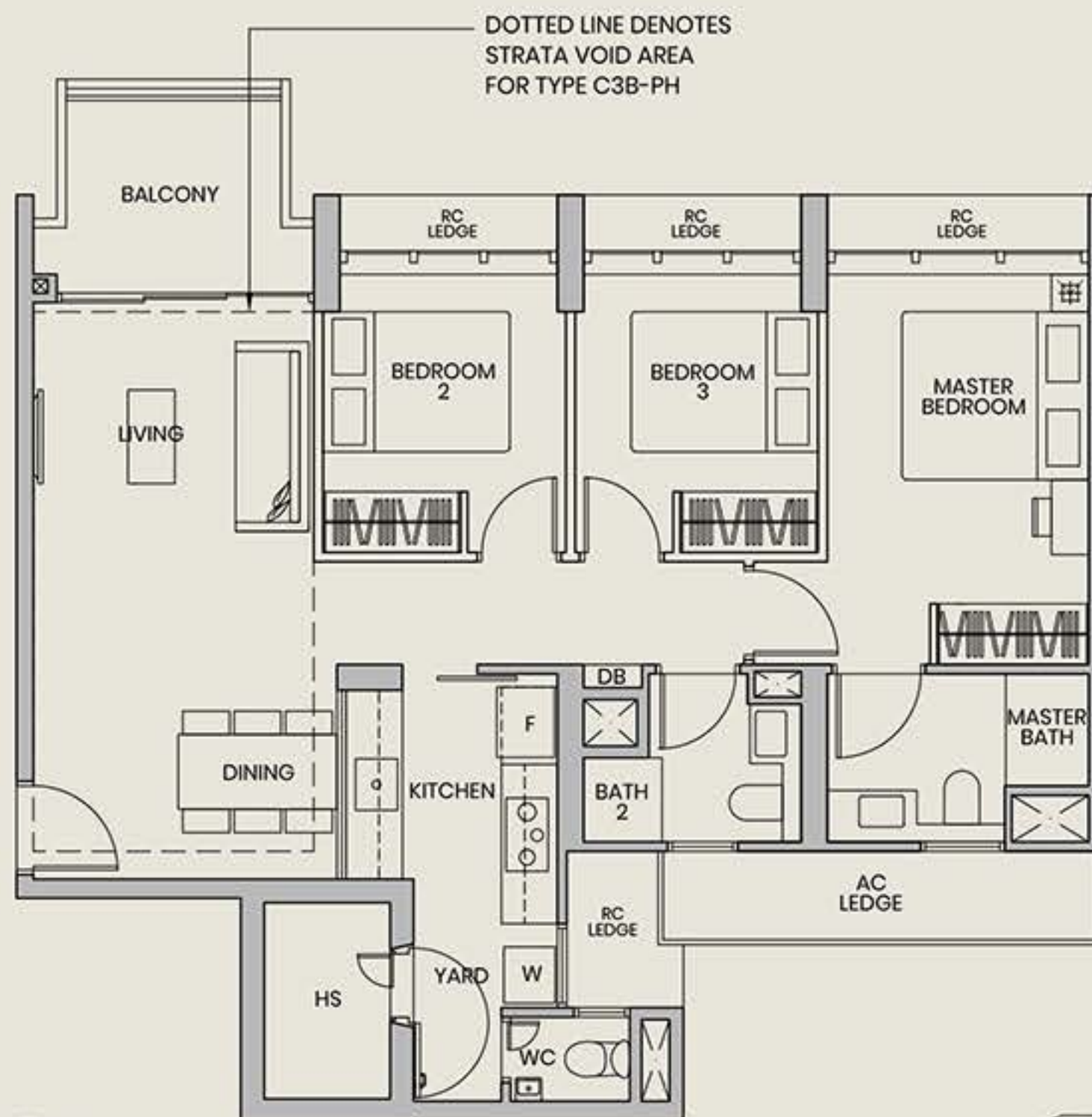
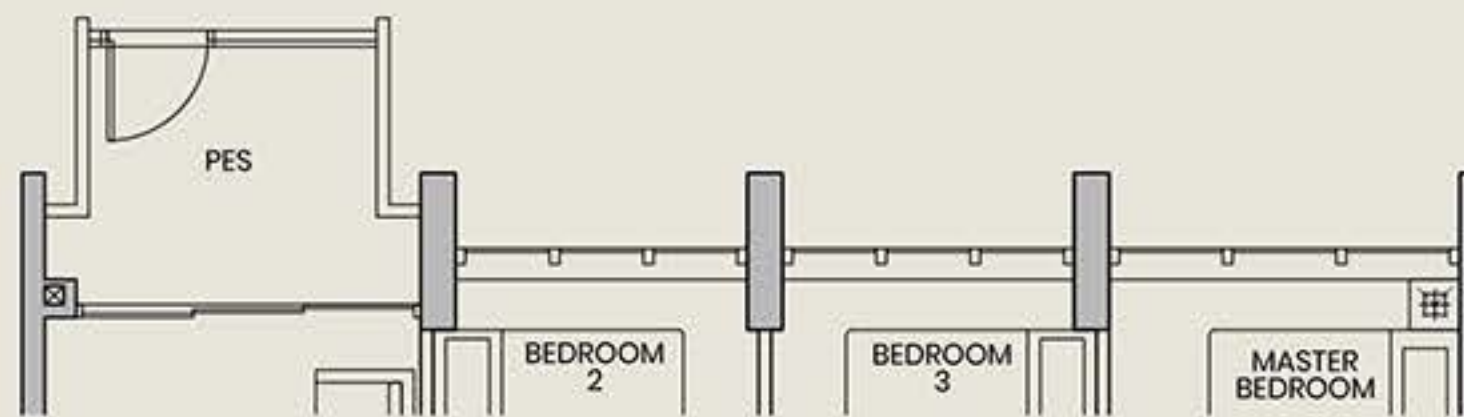
TOWER 37 | #02-16 TO #13-16

TYPE C3B-PH

113 SQ M | 1216 SQ FT
(INCLUSIVE OF 20 SQ M STRATA VOID OVER LIVING/DINING)

TOWER 37 | #14-16

TYPE C3B-P



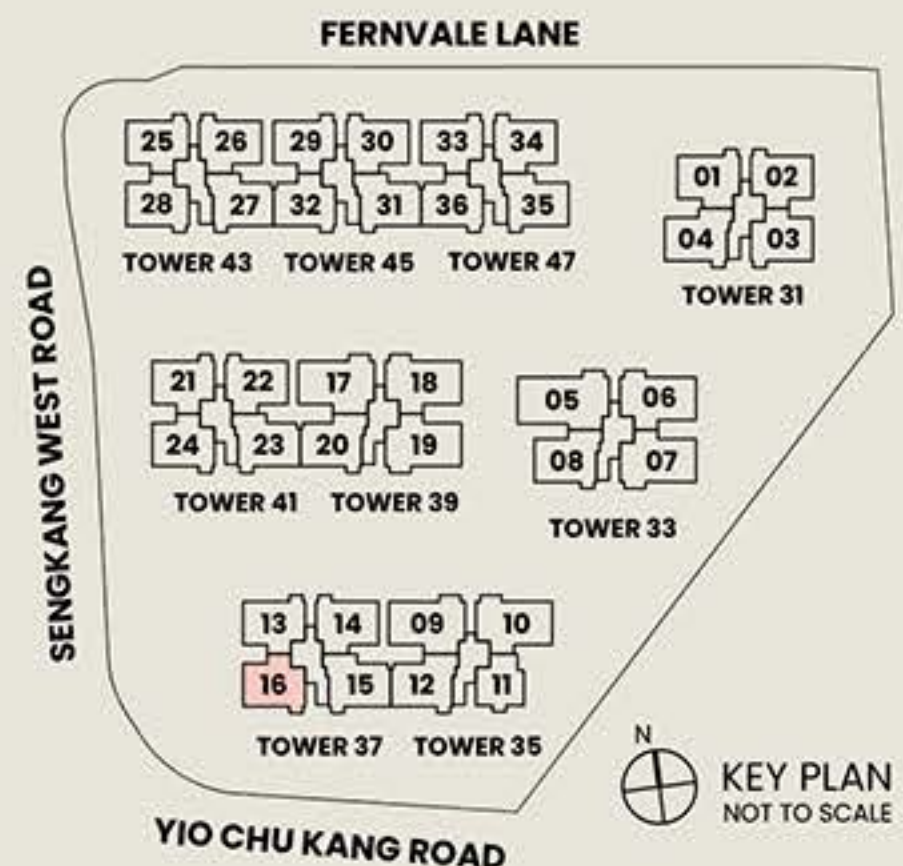
PARC GREENWICH



Legend

Wall not allowed to be hacked or altered

F Fridge DB Distribution Board
W Washer HS Household Shelter



Area includes air conditioner (AC) ledge, balcony, PES and strata void where applicable. The above plans are subject to change as may be approved by the relevant authorities. All floor plans are approximate measurements only and are subject to government re-survey. The balcony shall not be enclosed unless with the approved balcony screen. The installation and cost of the screen shall be borne by the purchaser.

3 Bedroom Premium

TYPE C3C-P

93 SQ M | 1001 SQ FT

TOWER 37 | #01-13

TYPE C3C

93 SQ M | 1001 SQ FT

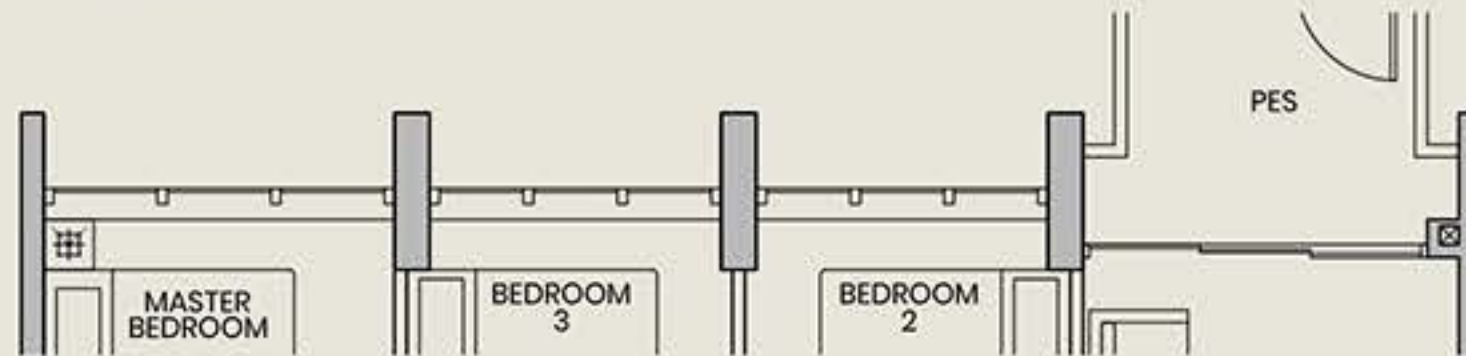
TOWER 37 | #02-13 TO #13-13

TYPE C3C-PH

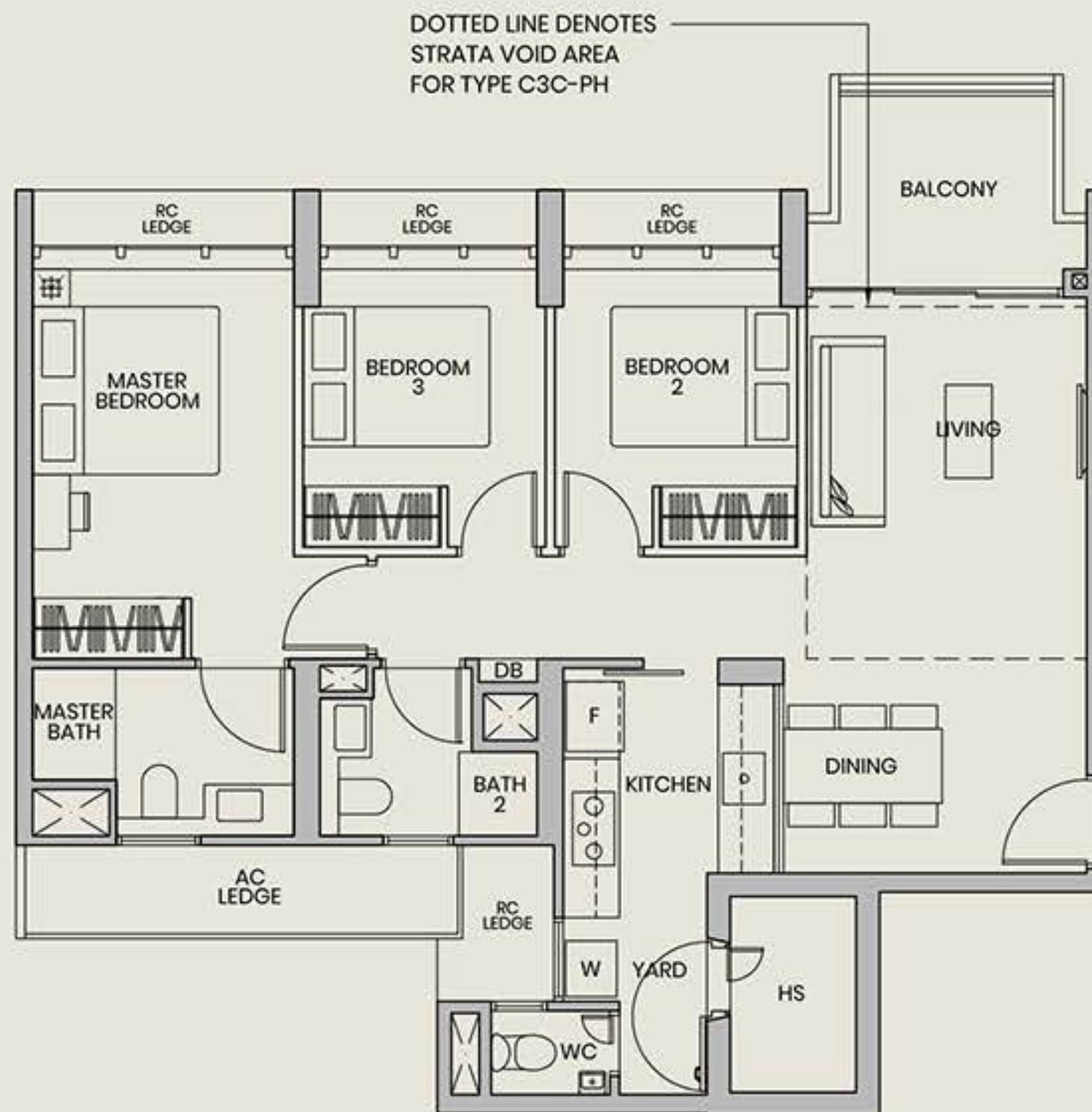
106 SQ M | 1141 SQ FT
(INCLUSIVE OF 13 SQ M STRATA VOID OVER LIVING)

TOWER 37 | #14-13

TYPE C3C-P



DOTTED LINE DENOTES STRATA VOID AREA FOR TYPE C3C-PH



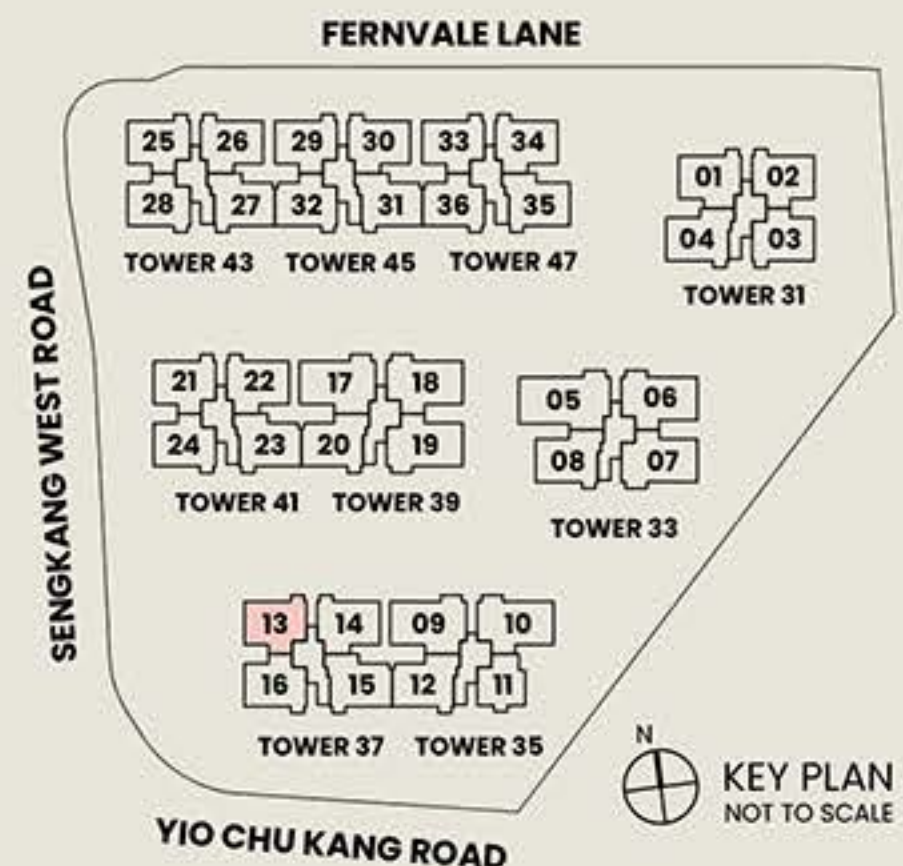
91



Legend

Wall not allowed to be hacked or altered

F Fridge DB Distribution Board
W Washer HS Household Shelter



Area includes air conditioner (AC) ledge, balcony, PES and strata void where applicable. The above plans are subject to change as may be approved by the relevant authorities. All floor plans are approximate measurements only and are subject to government re-survey. The balcony shall not be enclosed unless with the approved balcony screen. The installation and cost of the screen shall be borne by the purchaser.

3 Bedroom Premium

TYPE C4-P

93 SQ M | 1001 SQ FT

TOWER 37 | #01-14
 TOWER 41 | #01-22
 TOWER 43 | #01-26
 TOWER 45 | #01-30
 TOWER 47 | #01-34

TYPE C4

93 SQ M | 1001 SQ FT

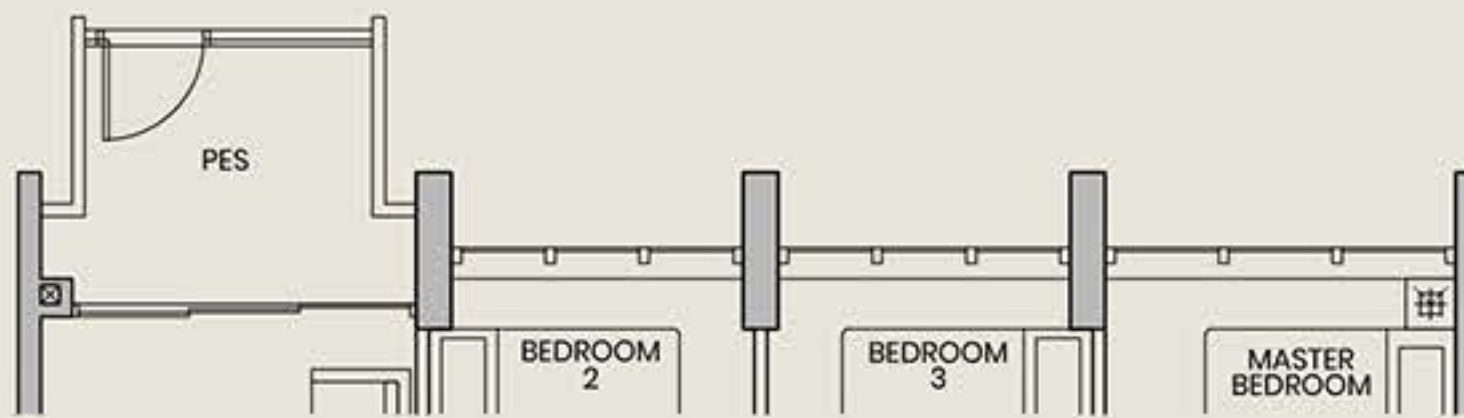
TOWER 37 | #02-14 TO #13-14
 TOWER 41 | #02-22 TO #13-22
 TOWER 43 | #02-26 TO #13-26
 TOWER 45 | #02-30 TO #13-30
 TOWER 47 | #02-34 TO #13-34

TYPE C4-PH

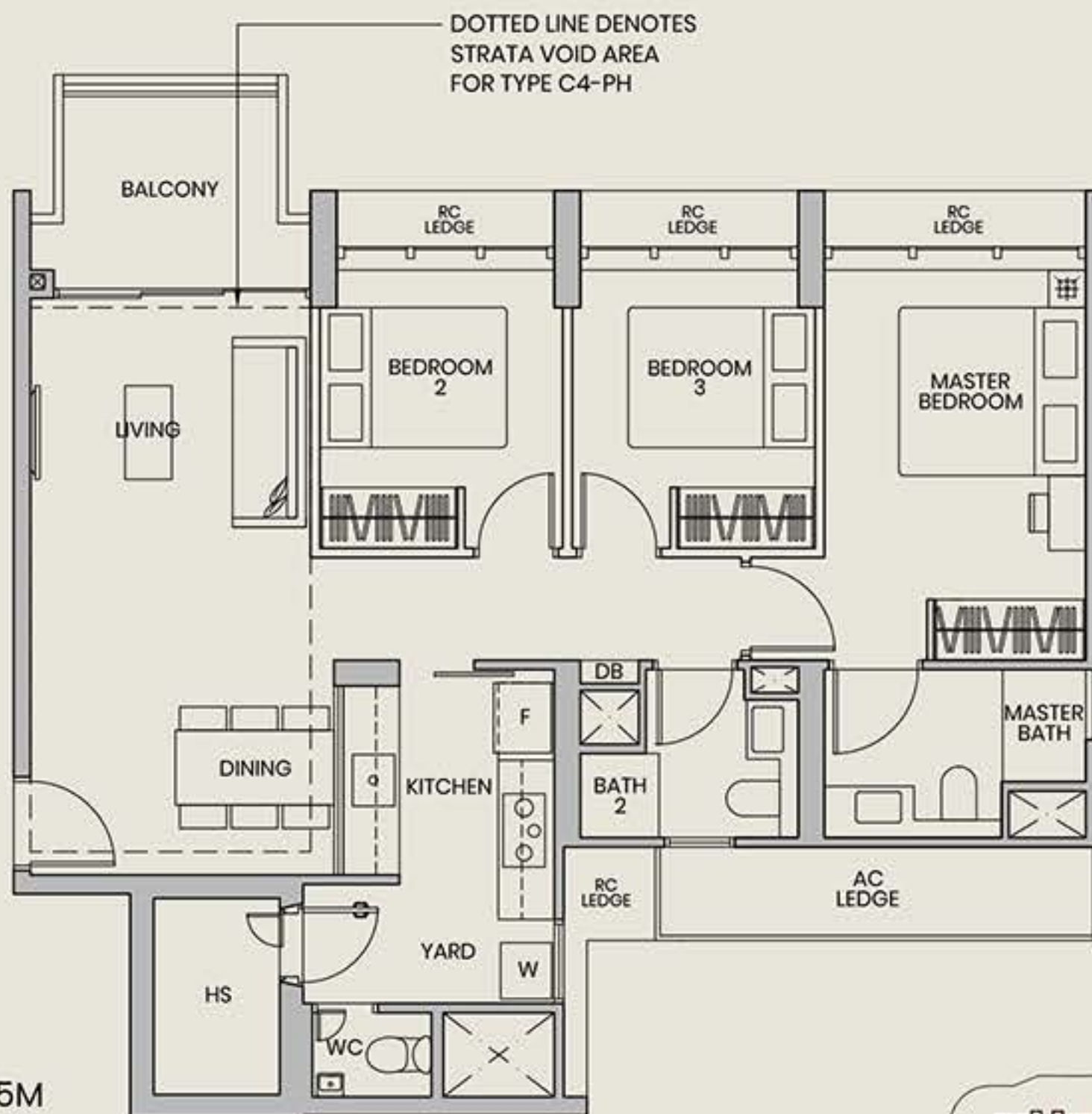
113 SQ M | 1216 SQ FT
 (INCLUSIVE OF 20 SQ M STRATA VOID OVER LIVING/DINING)

TOWER 37 | #14-14
 TOWER 41 | #14-22
 TOWER 43 | #14-26
 TOWER 45 | #14-30
 TOWER 47 | #14-34

TYPE C4-P



DOTTED LINE DENOTES STRATA VOID AREA FOR TYPE C4-PH



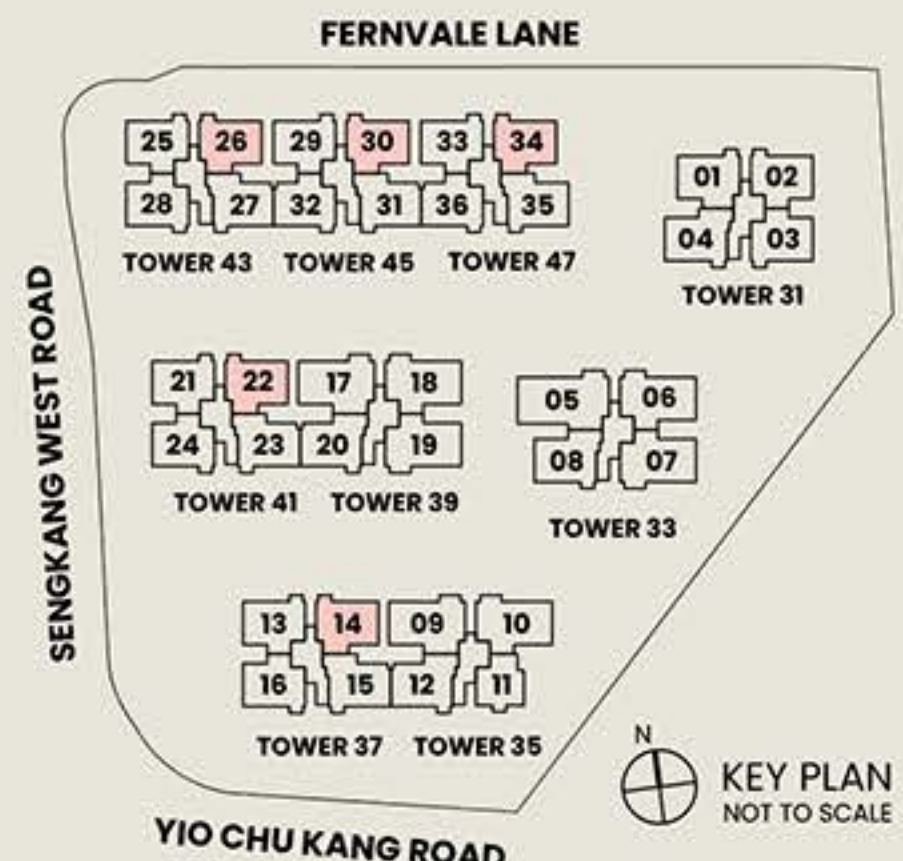
PARC GREENWICH



Legend

Wall not allowed to be hacked or altered

F Fridge DB Distribution Board
 W Washer HS Household Shelter



Area includes air conditioner (AC) ledge, balcony, PES and strata void where applicable. The above plans are subject to change as may be approved by the relevant authorities. All floor plans are approximate measurements only and are subject to government re-survey. The balcony shall not be enclosed unless with the approved balcony screen. The installation and cost of the screen shall be borne by the purchaser.

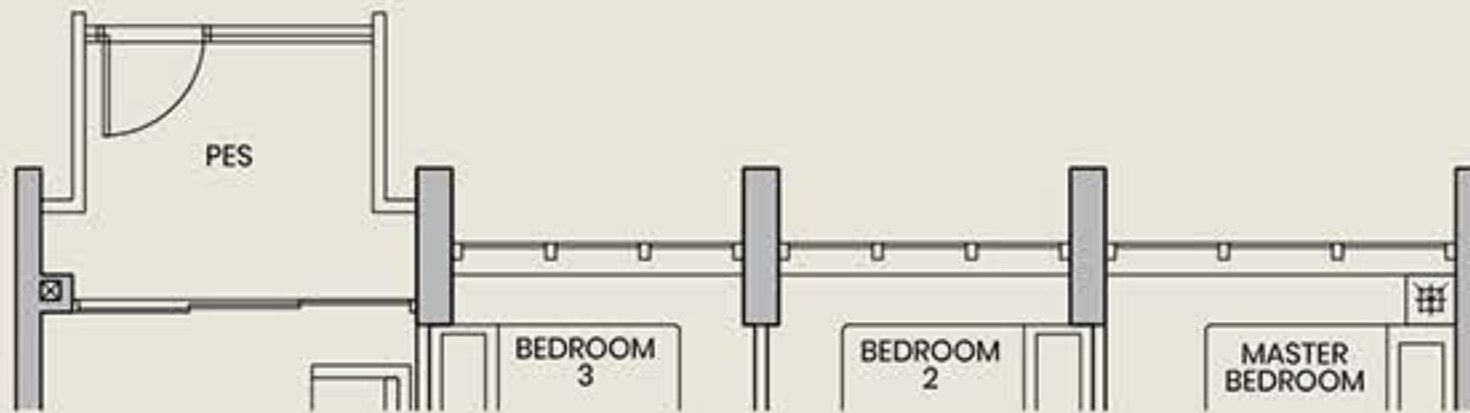
3 Bedroom Premium with Study

TYPE C5-P

99 SQ M | 1066 SQ FT

TOWER 33 | #01-08
TOWER 47 | #01-35*

TYPE C5-P



TYPE C5

99 SQ M | 1066 SQ FT

TOWER 31 | #04-04 TO #13-04
TOWER 33 | #02-08 TO #13-08
TOWER 47 | #02-35* TO #13-35*

TYPE C5-PH

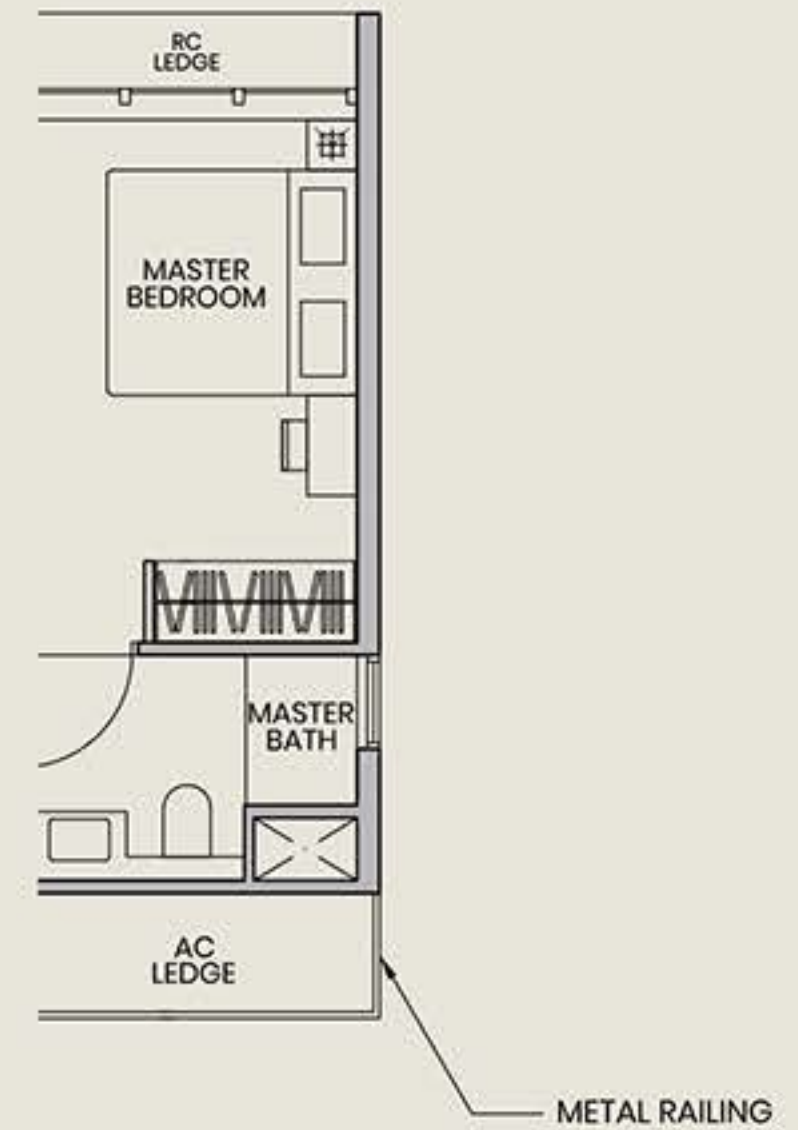
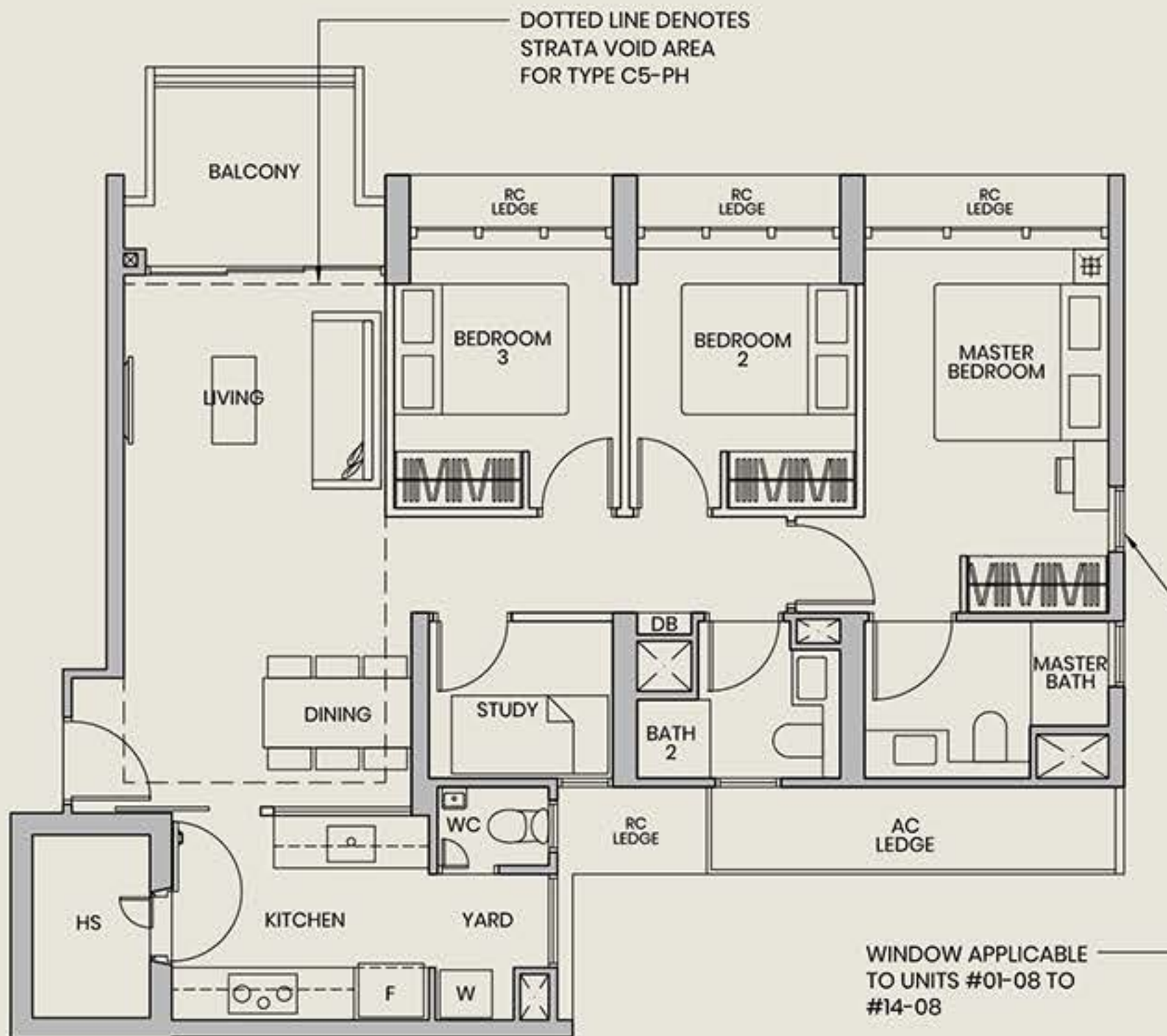
119 SQ M | 1281 SQ FT
(INCLUSIVE OF 20 SQ M STRATA VOID OVER LIVING/DINING)

TOWER 31 | #14-04
TOWER 33 | #14-08
TOWER 47 | #14-35*

TYPE C5B

99 SQ M | 1066 SQ FT

TOWER 31 | #03-04

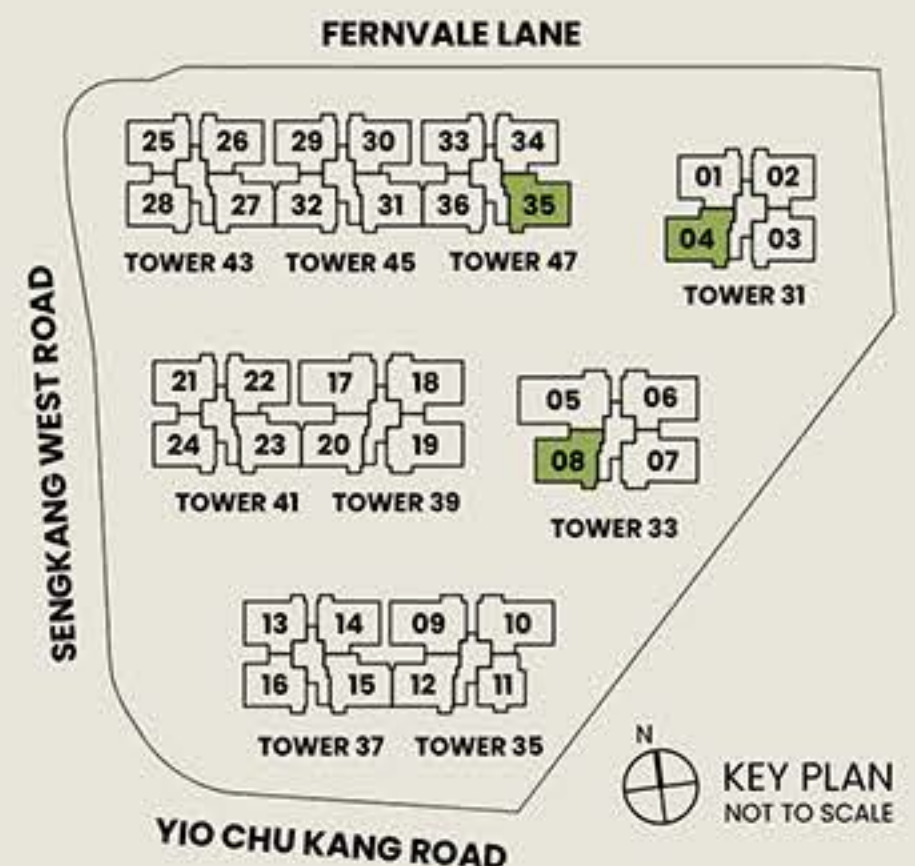


Legend

Wall not allowed to be hacked or altered

* Mirrored Unit

F Fridge DB Distribution Board
W Washer HS Household Shelter



Area includes air conditioner (AC) ledge, balcony, PES and strata void where applicable. The above plans are subject to change as may be approved by the relevant authorities. All floor plans are approximate measurements only and are subject to government re-survey. The balcony shall not be enclosed unless with the approved balcony screen. The installation and cost of the screen shall be borne by the purchaser.

3 Bedroom Premium with Study

TYPE C5A-P

99 SQ M | 1066 SQ FT

TOWER 39 | #01-20
 TOWER 41 | #01-23*
 TOWER 43 | #01-27*
 TOWER 45 | #01-31*

TYPE C5A

99 SQ M | 1066 SQ FT

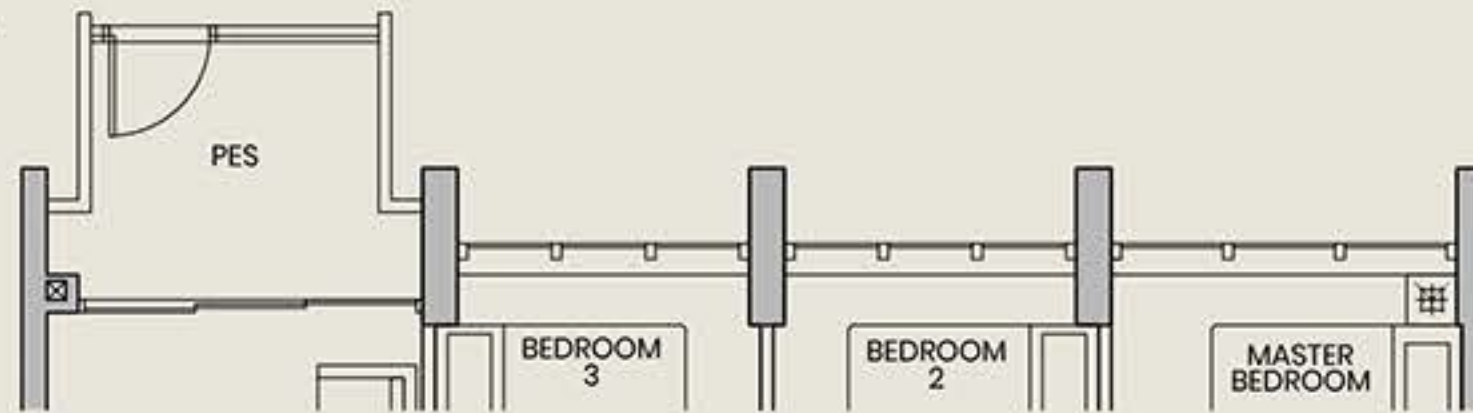
TOWER 39 | #02-20 TO #13-20
 TOWER 41 | #02-23* TO #13-23*
 TOWER 43 | #02-27* TO #13-27*
 TOWER 45 | #02-31* TO #13-31*

TYPE C5A-PH

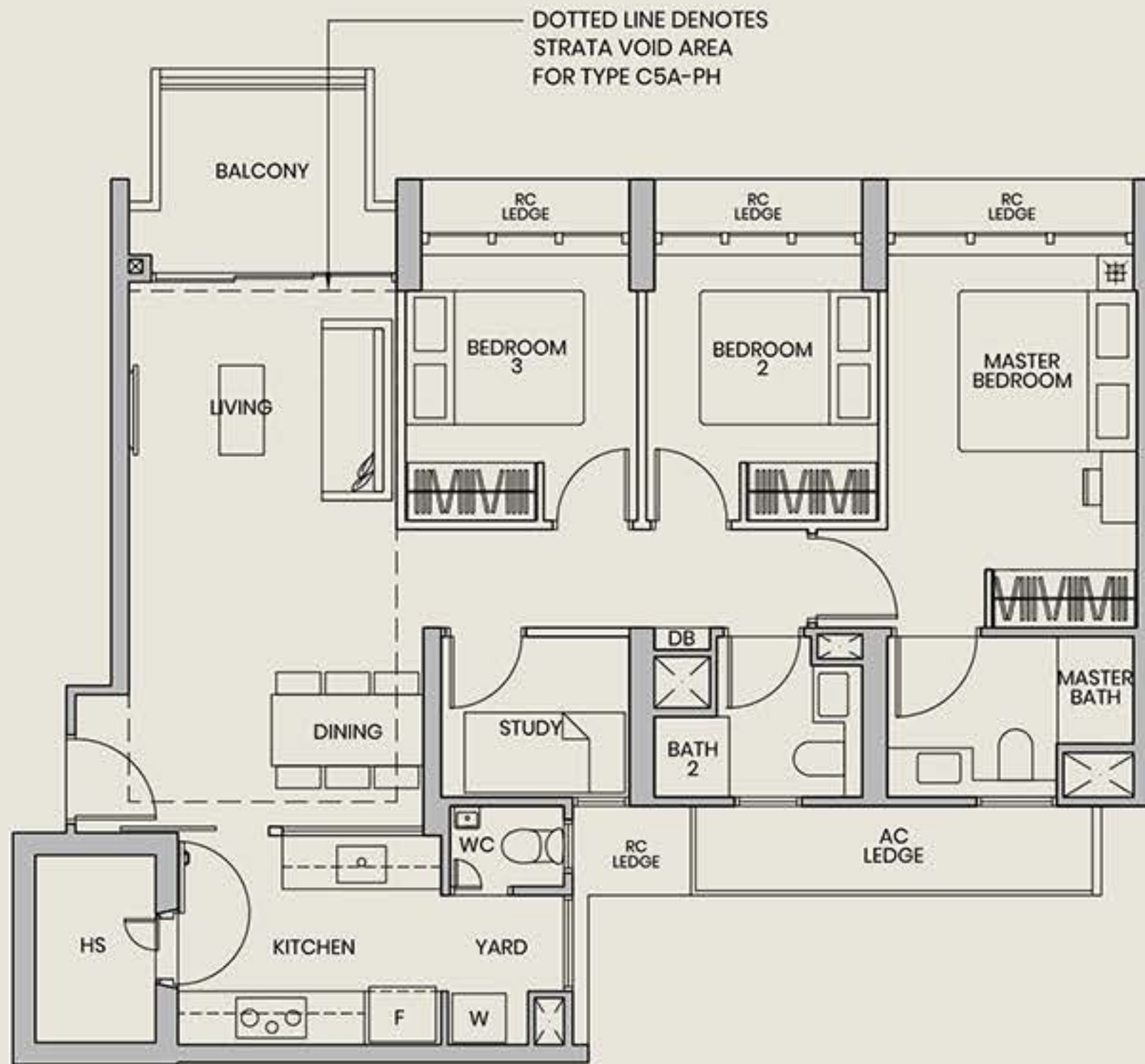
119 SQ M | 1281 SQ FT
 (INCLUSIVE OF 20 SQ M STRATA VOID OVER LIVING/DINING)

TOWER 39 | #14-20
 TOWER 41 | #14-23*
 TOWER 43 | #14-27*
 TOWER 45 | #14-31*

TYPE C5A-P



DOTTED LINE DENOTES STRATA VOID AREA FOR TYPE C5A-PH



PARC GREENWICH

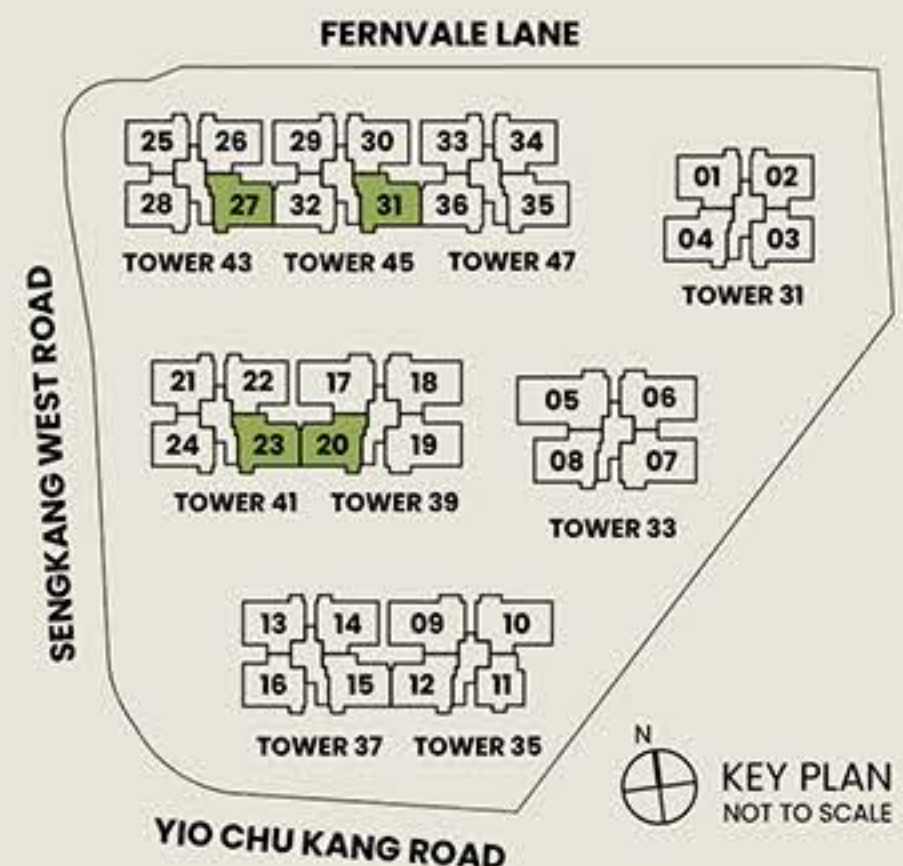


Legend

Wall not allowed to be hacked or altered

* Mirrored Unit

F Fridge DB Distribution Board
 W Washer HS Household Shelter



Area includes air conditioner (AC) ledge, balcony, PES and strata void where applicable. The above plans are subject to change as may be approved by the relevant authorities. All floor plans are approximate measurements only and are subject to government re-survey. The balcony shall not be enclosed unless with the approved balcony screen. The installation and cost of the screen shall be borne by the purchaser.

3 Bedroom Premium with Study

TYPE C5C-P

99 SQ M | 1066 SQ FT

TOWER 35 | #01-12
TOWER 37 | #01-15*

TYPE C5C

99 SQ M | 1066 SQ FT

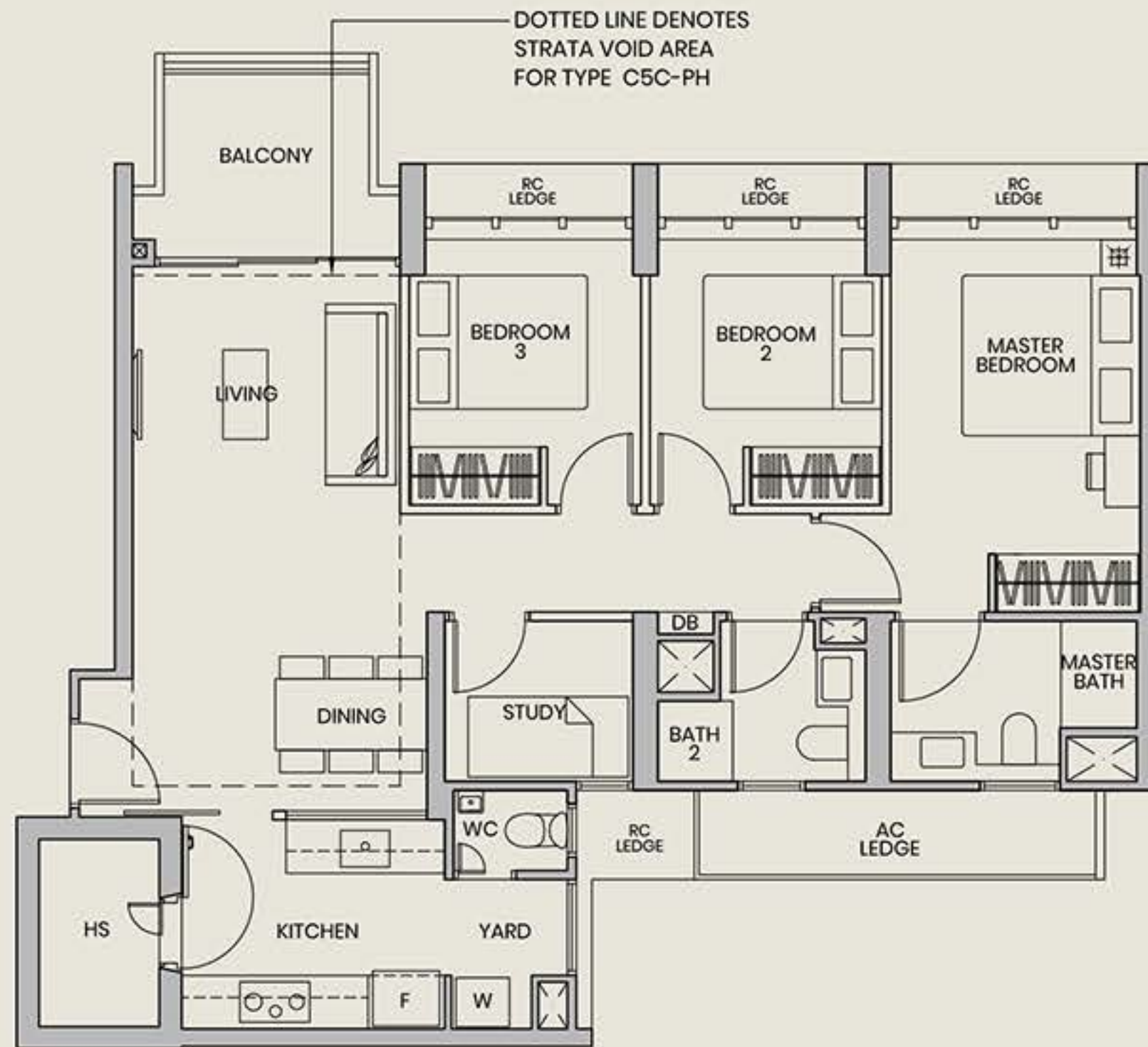
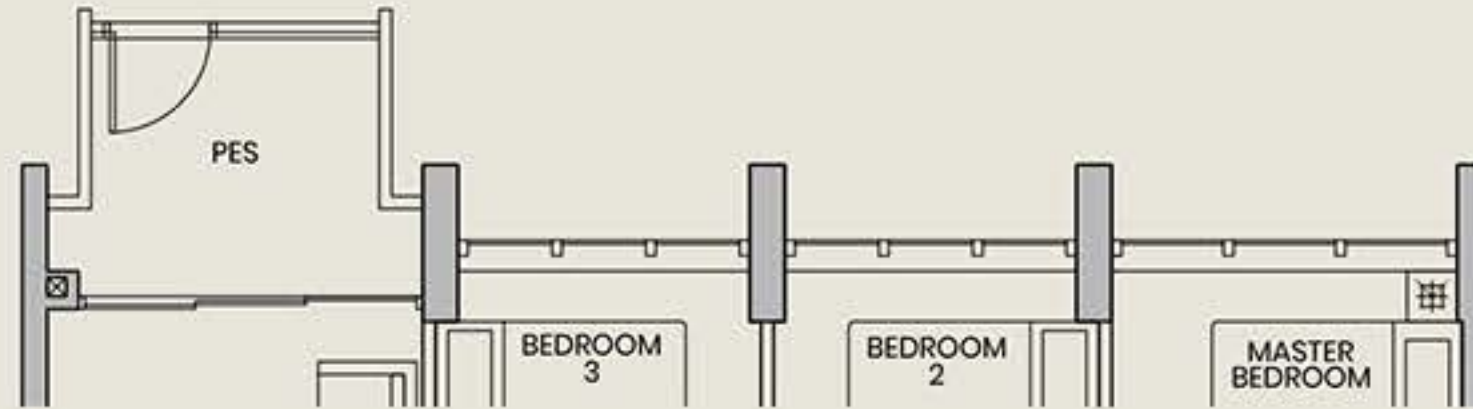
TOWER 35 | #02-12 TO #13-12
TOWER 37 | #02-15* TO #13-15*

TYPE C5C-PH

119 SQ M | 1281 SQ FT
(INCLUSIVE OF 20 SQ M STRATA VOID OVER LIVING/DINING)

TOWER 35 | #14-12
TOWER 37 | #14-15*

TYPE C5C-P

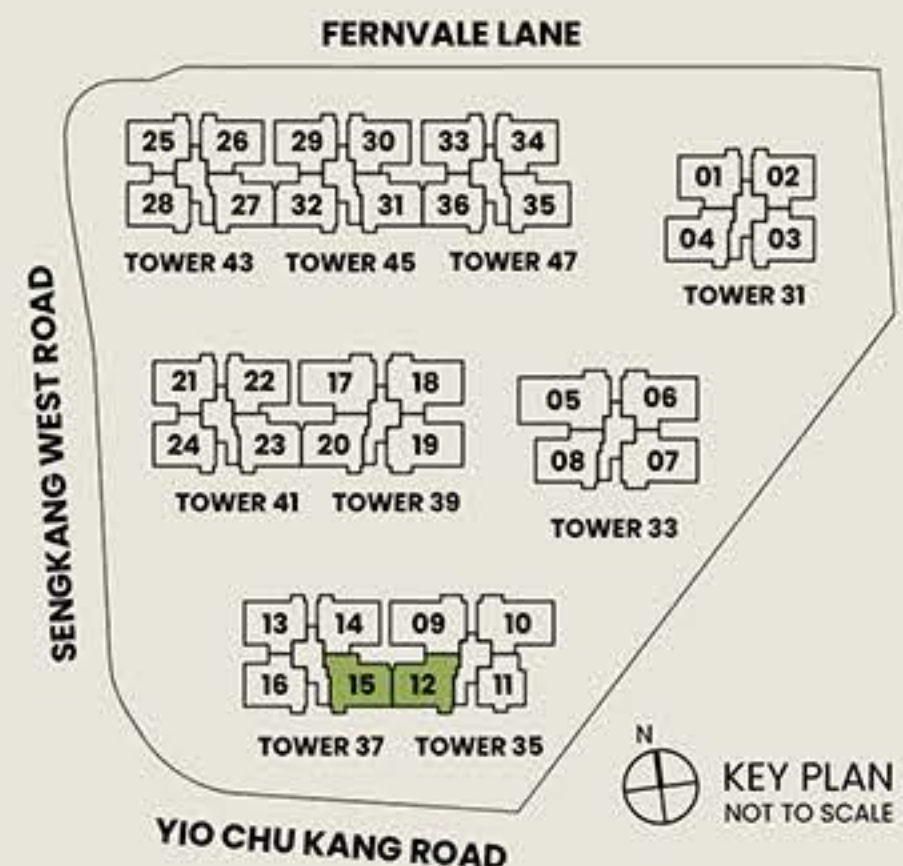


Legend

Wall not allowed to be hacked or altered

* Mirrored Unit

F Fridge DB Distribution Board
W Washer HS Household Shelter



Area includes air conditioner (AC) ledge, balcony, PES and strata void where applicable. The above plans are subject to change as may be approved by the relevant authorities. All floor plans are approximate measurements only and are subject to government re-survey. The balcony shall not be enclosed unless with the approved balcony screen. The installation and cost of the screen shall be borne by the purchaser.

4 Bedroom Premium

TYPE D1-P

112 SQ M | 1206 SQ FT

TOWER 35 | #01-09
TOWER 39 | #01-17

TYPE D1

112 SQ M | 1206 SQ FT

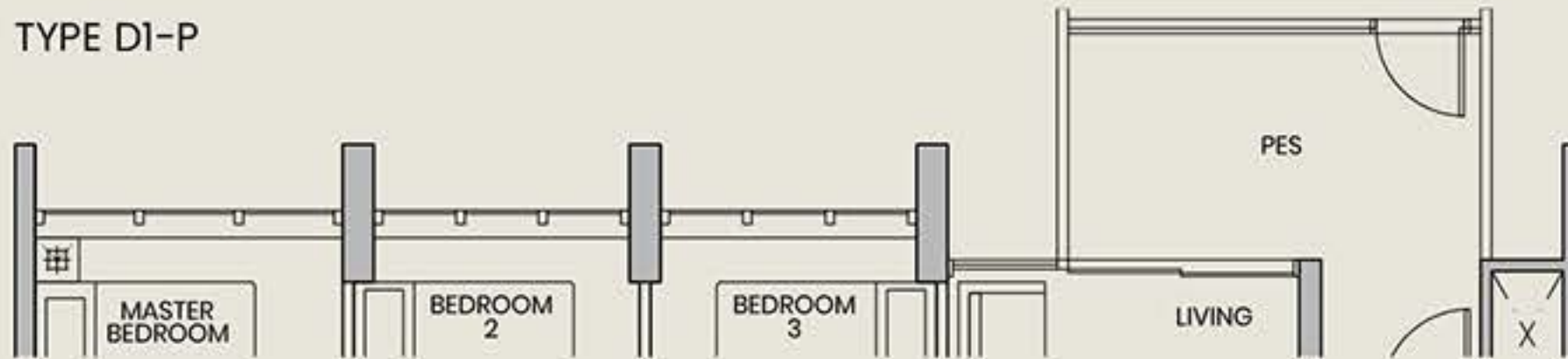
TOWER 35 | #02-09 TO #13-09
TOWER 39 | #02-17 TO #13-17

TYPE D1-PH

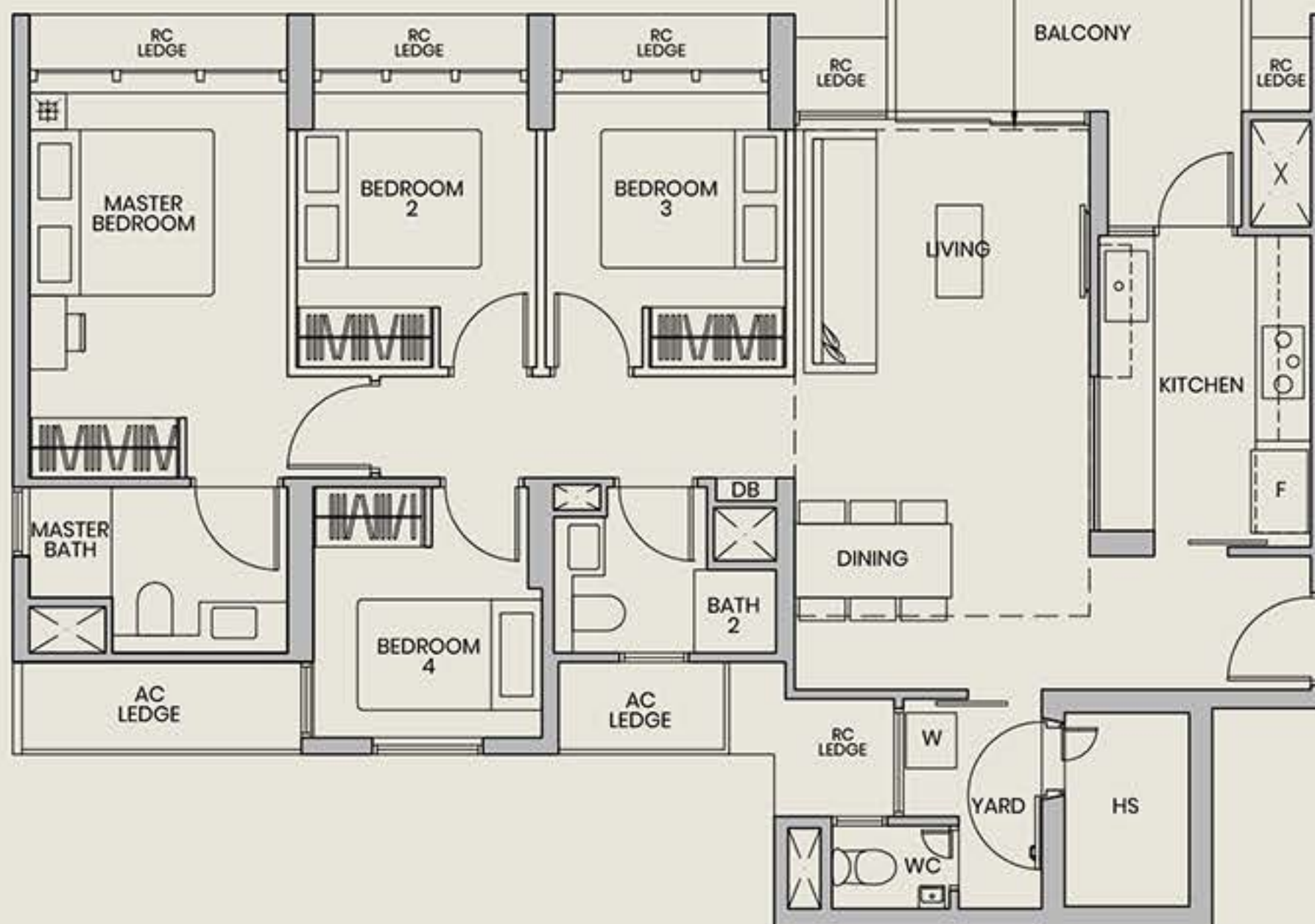
131 SQ M | 1410 SQ FT
(INCLUSIVE OF 19 SQ M STRATA VOID OVER LIVING/DINING)

TOWER 35 | #14-09
TOWER 39 | #14-17

TYPE D1-P



DOTTED LINE DENOTES STRATA VOID AREA FOR TYPE D1-PH



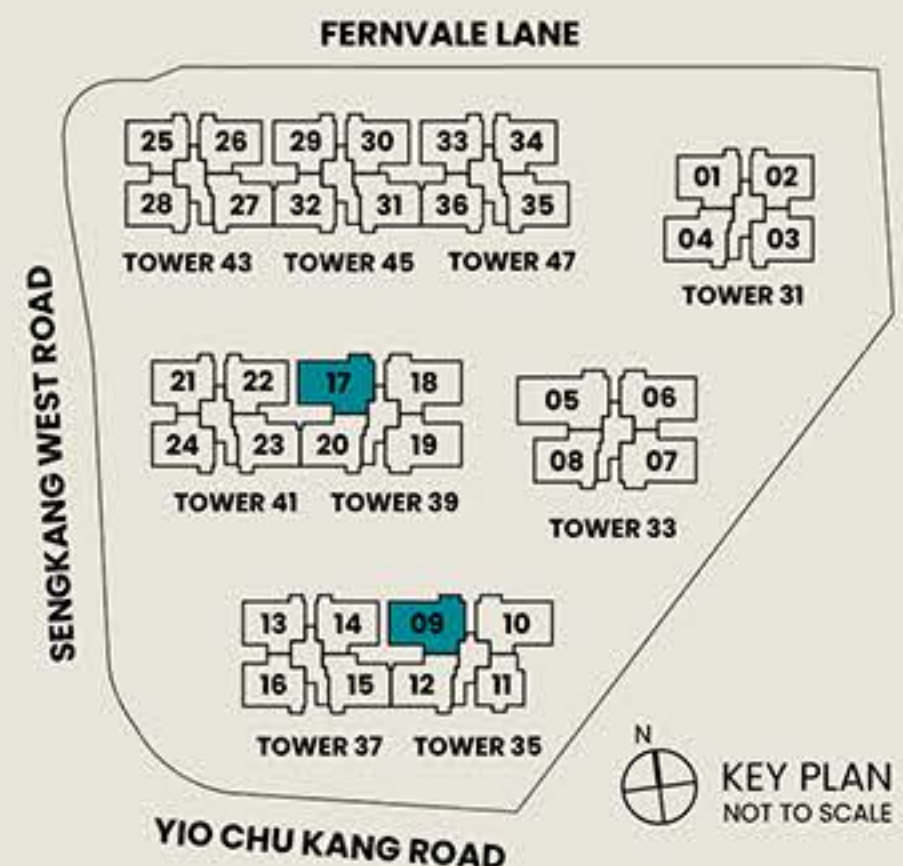
101



Legend

Wall not allowed to be hacked or altered

F Fridge DB Distribution Board
W Washer HS Household Shelter



Area includes air conditioner (AC) ledge, balcony, PES and strata void where applicable. The above plans are subject to change as may be approved by the relevant authorities. All floor plans are approximate measurements only and are subject to government re-survey. The balcony shall not be enclosed unless with the approved balcony screen. The installation and cost of the screen shall be borne by the purchaser.

4 Bedroom Premium

TYPE D2-P

112 SQ M | 1206 SQ FT

- TOWER 33 | #01-06
- TOWER 33 | #01-07*
- TOWER 35 | #01-10
- TOWER 39 | #01-18
- TOWER 39 | #01-19*

TYPE D2

112 SQ M | 1206 SQ FT

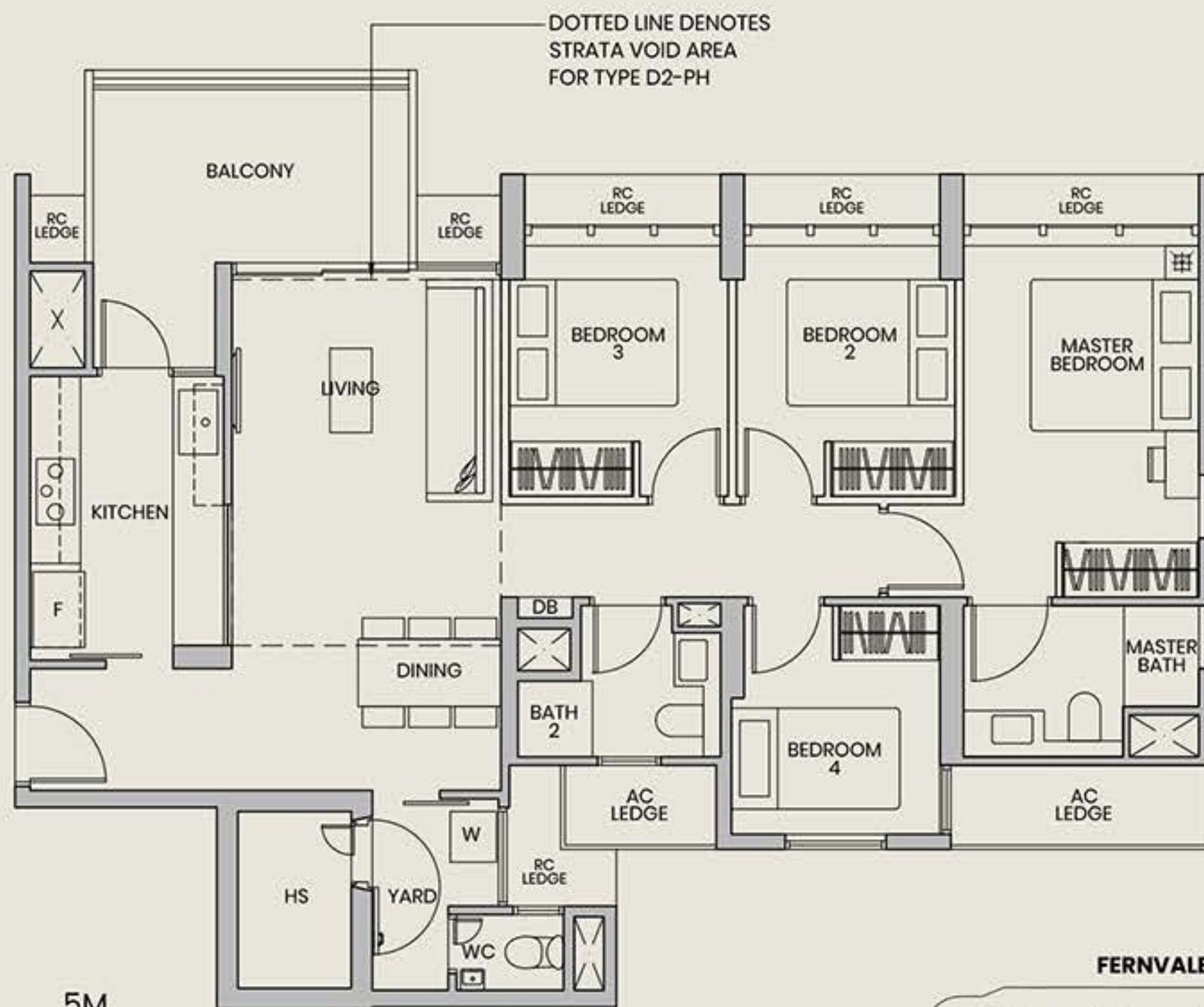
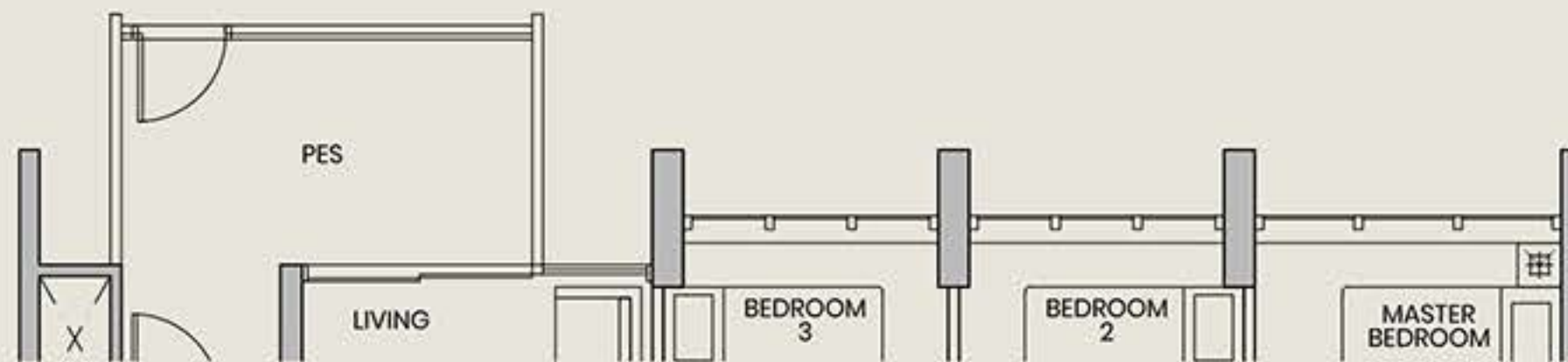
- TOWER 33 | #02-06 TO #13-06
- TOWER 33 | #02-07* TO #13-07*
- TOWER 35 | #02-10 TO #13-10
- TOWER 39 | #02-18 TO #13-18
- TOWER 39 | #02-19* TO #13-19*

TYPE D2-PH

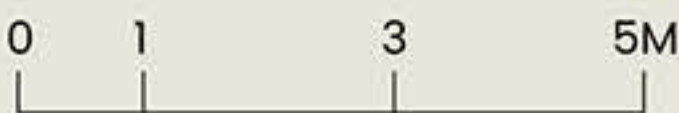
128 SQ M | 1378 SQ FT
(INCLUSIVE OF 16 SQ M STRATA VOID OVER LIVING)

- TOWER 33 | #14-06
- TOWER 33 | #14-07*
- TOWER 35 | #14-10
- TOWER 39 | #14-18
- TOWER 39 | #14-19*

TYPE D2-P



PARC GREENWICH

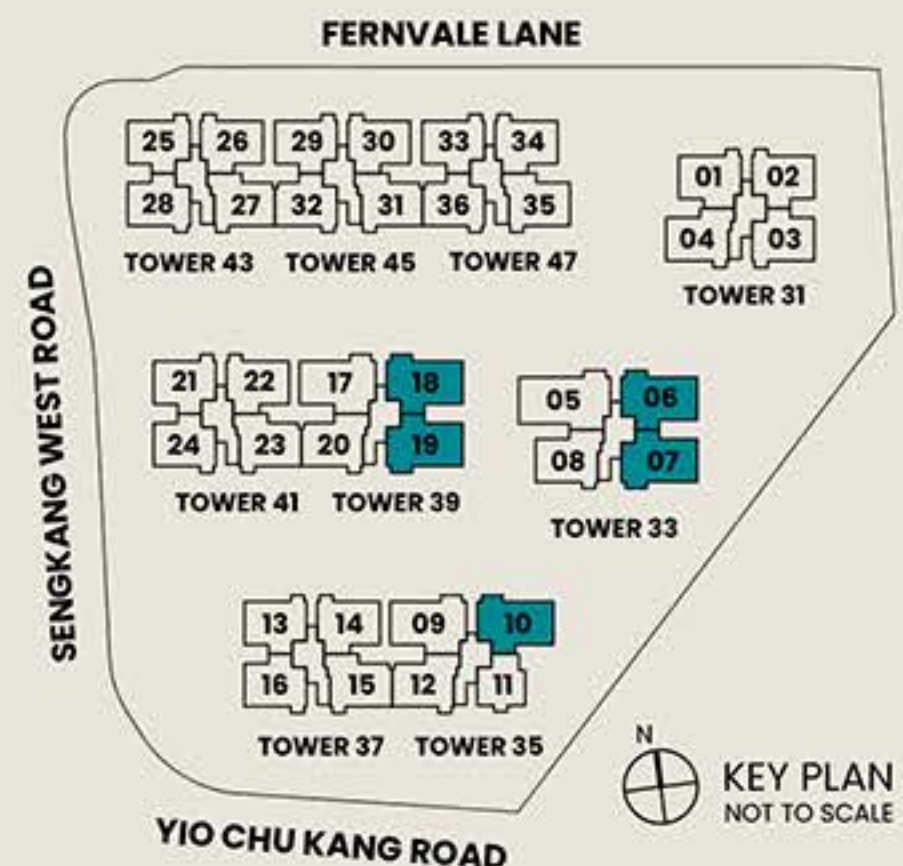


Legend

Wall not allowed to be hacked or altered

* Mirrored Unit

- F Fridge
- DB Distribution Board
- W Washer
- HS Household Shelter



Area includes air conditioner (AC) ledge, balcony, PES and strata void where applicable. The above plans are subject to change as may be approved by the relevant authorities. All floor plans are approximate measurements only and are subject to government re-survey. The balcony shall not be enclosed unless with the approved balcony screen. The installation and cost of the screen shall be borne by the purchaser.

5 Bedroom Luxury

TYPE E1-P

136 SQ M | 1464 SQ FT

TOWER 33 | #01-05

TYPE E1

136 SQ M | 1464 SQ FT

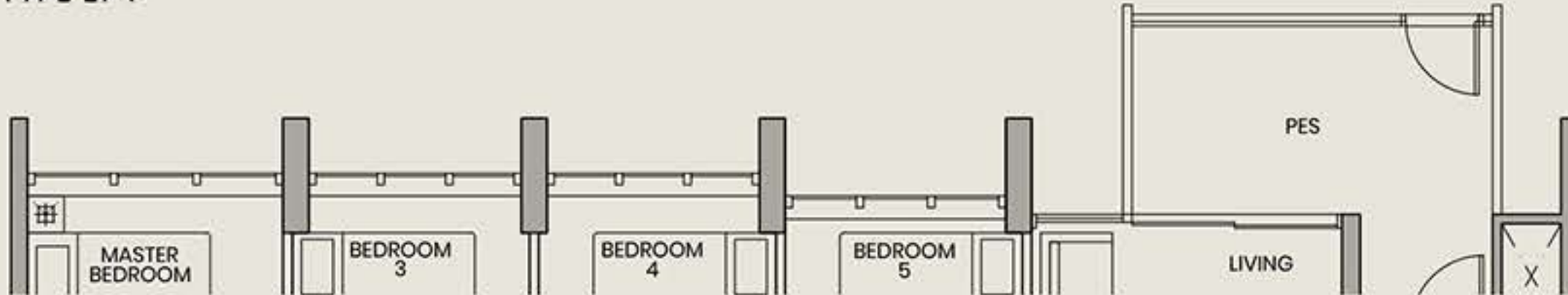
TOWER 33 | #02-05 to #13-05

TYPE E1-PH

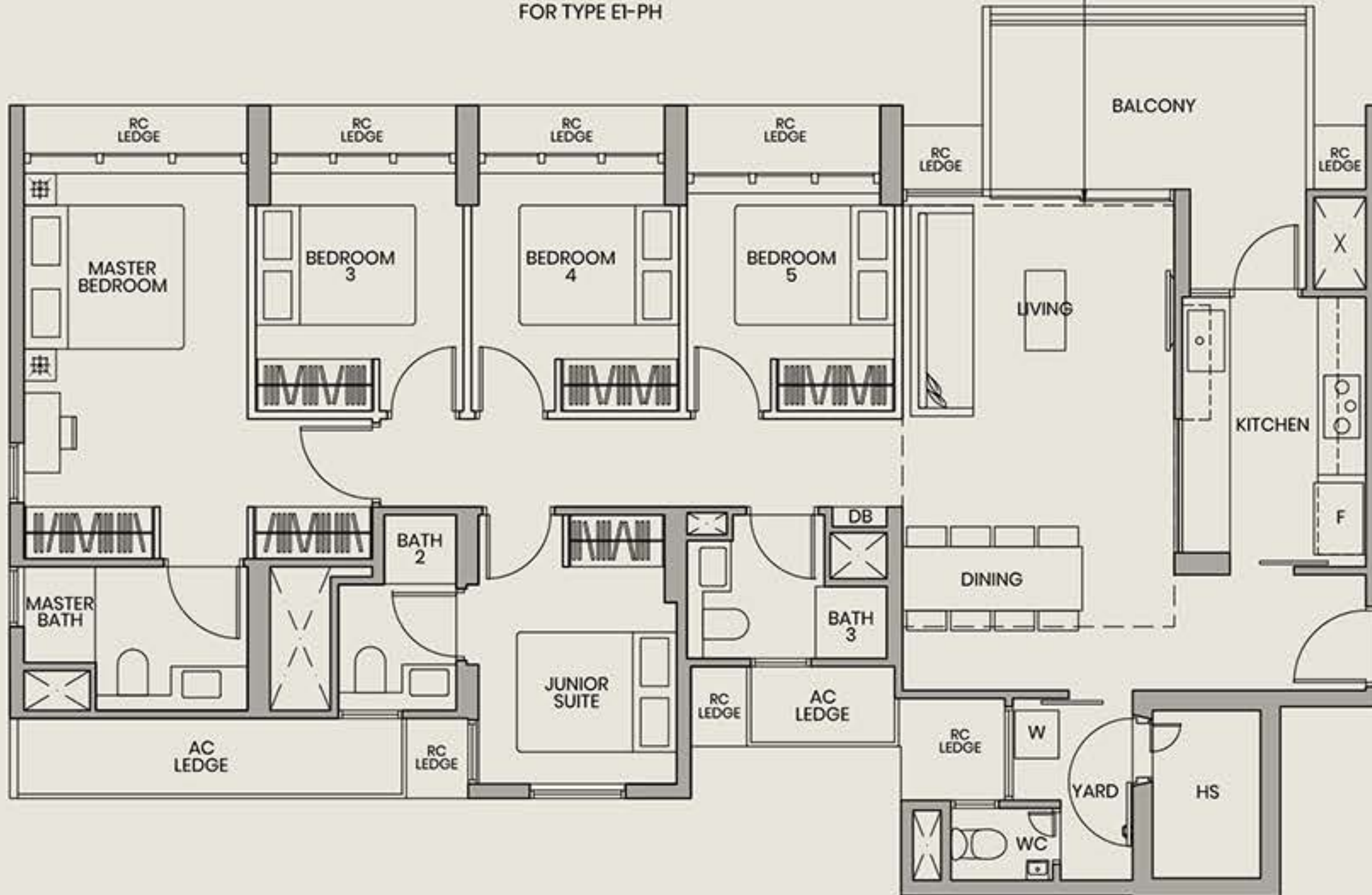
156 SQ M | 1679 SQ FT
(INCLUSIVE OF 20 SQ M STRATA VOID OVER LIVING/DINING)

TOWER 33 | #14-05

TYPE E1-P



DOTTED LINE DENOTES STRATA VOID AREA FOR TYPE E1-PH



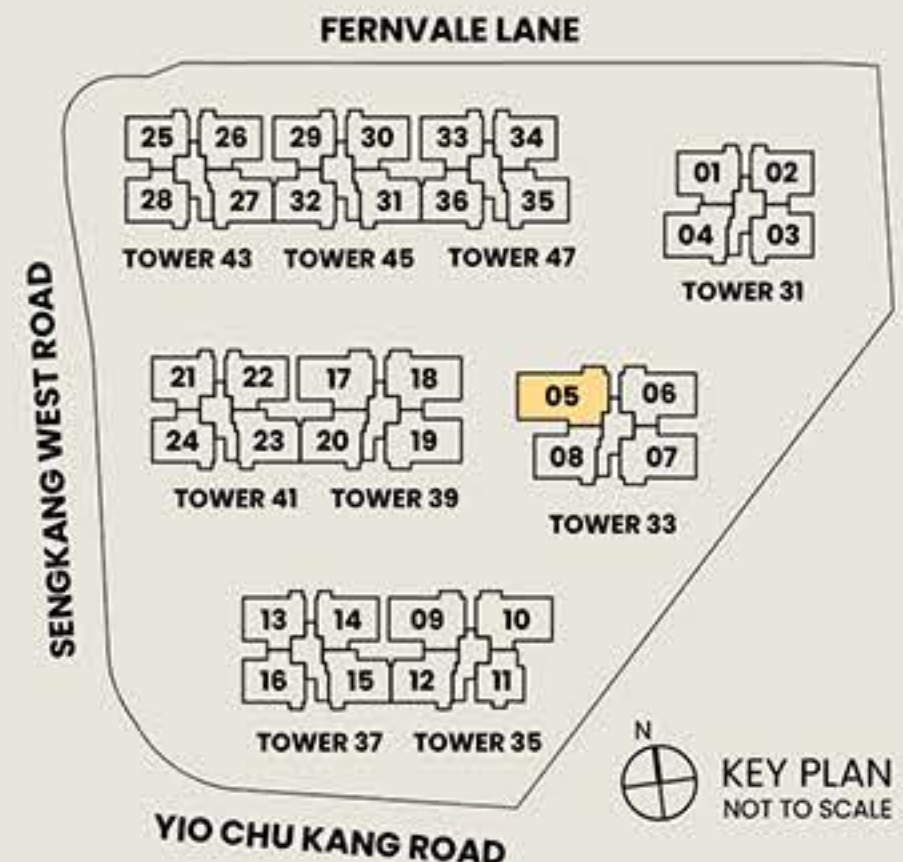
105



Legend

Wall not allowed to be hacked or altered

- F Fridge
- W Washer
- DB Distribution Board
- HS Household Shelter



Area includes air conditioner (AC) ledge, balcony, PES and strata void where applicable. The above plans are subject to change as may be approved by the relevant authorities. All floor plans are approximate measurements only and are subject to government re-survey. The balcony shall not be enclosed unless with the approved balcony screen. The installation and cost of the screen shall be borne by the purchaser.