

DISTRIBUTION CHART

333 Thomson Rd Singapore 307675

	#01	#02	#03	#04	#05	#06
ROOF	ROOF TERRACE AND FACILITIES					
5TH STOREY	D1-1 #05-01	C1-1 #05-02	C2-1 #05-03	B3A #05-04	B4-1 #05-05	B2 #05-06
4TH STOREY	D1-1 #04-01	C1-1 #04-02	C2-1 #04-03	B3A #04-04	B4-1 #04-05	B2 #04-06
3RD STOREY	D1-1 #03-01	C1-1 #03-02	C2-1 #03-03	B3A #03-04	B4-1 #03-05	B2 #03-06
2ND STOREY	D1-1 #02-01	C1-1 #02-02	C2-1 #02-03	B3A #02-04	B4-1 #02-05	B2 #02-06
1ST STOREY	D1-1P #01-01	C1-1P #01-02	C2-1P #01-03	B3AP #01-04	B4-1P #01-05	B2P #01-06

335 Thomson Rd Singapore 307691

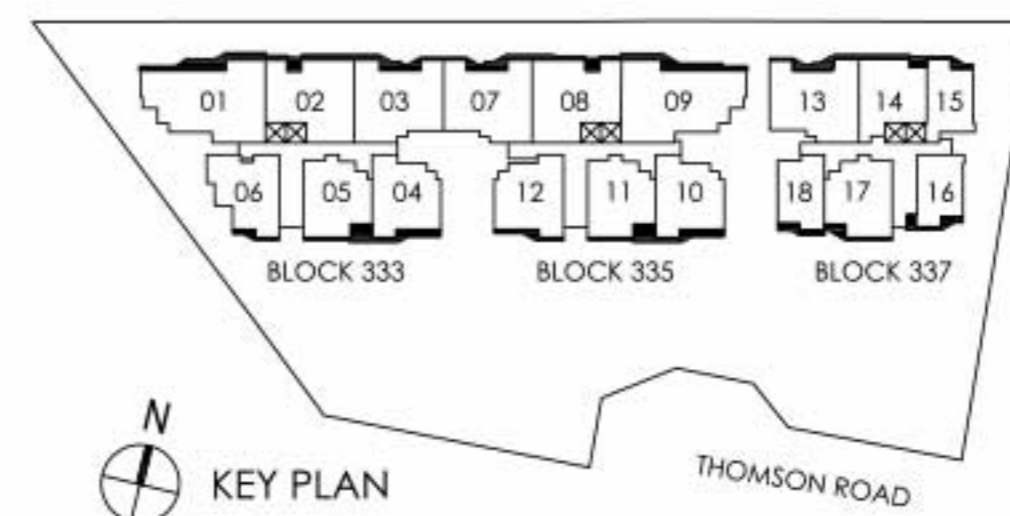
	#07	#08	#09	#10	#11	#12
ROOF	ROOF TERRACE AND FACILITIES					
5TH STOREY	C2-2 #05-07	C1-2 #05-08	D1-2 #05-09	B3 #05-10	B4-2 #05-11	B3B #05-12
4TH STOREY	C2-2 #04-07	C1-2 #04-08	D1-2 #04-09	B3 #04-10	B4-2 #04-11	B3B #04-12
3RD STOREY	C2-2 #03-07	C1-2 #03-08	D1-2 #03-09	B3 #03-10	B4-2 #03-11	B3B #03-12
2ND STOREY	C2-2 #02-07	C1-2 #02-08	D1-2 #02-09	B3 #02-10	B4-2 #02-11	B3B #02-12
1ST STOREY	C2-2P #01-07	C1-2P #01-08	D1-2P #01-09	B3P #01-10	B4-2P #01-11	B3BP #01-12

337 Thomson Rd Singapore 307676

	#13	#14	#15	#16	#17	#18
ROOF	ROOF TERRACE AND FACILITIES					
5TH STOREY	C2A #05-13	B1 #05-14	A3 #05-15	A2 #05-16	B4-3 #05-17	A1 #05-18
4TH STOREY	C2A #04-13	B1 #04-14	A3 #04-15	A2 #04-16	B4-3 #04-17	A1 #04-18
3RD STOREY	C2A #03-13	B1 #03-14	A3 #03-15	A2 #03-16	B4-3 #03-17	A1 #03-18
2ND STOREY	C2A #02-13	B1 #02-14	A3 #02-15	A2 #02-16	B4-3 #02-17	A1 #02-18
1ST STOREY	C2AP #01-13	B1P #01-14	A3P #01-15	A2P #01-16	B4-3P #01-17	A1P #01-18

LEGEND

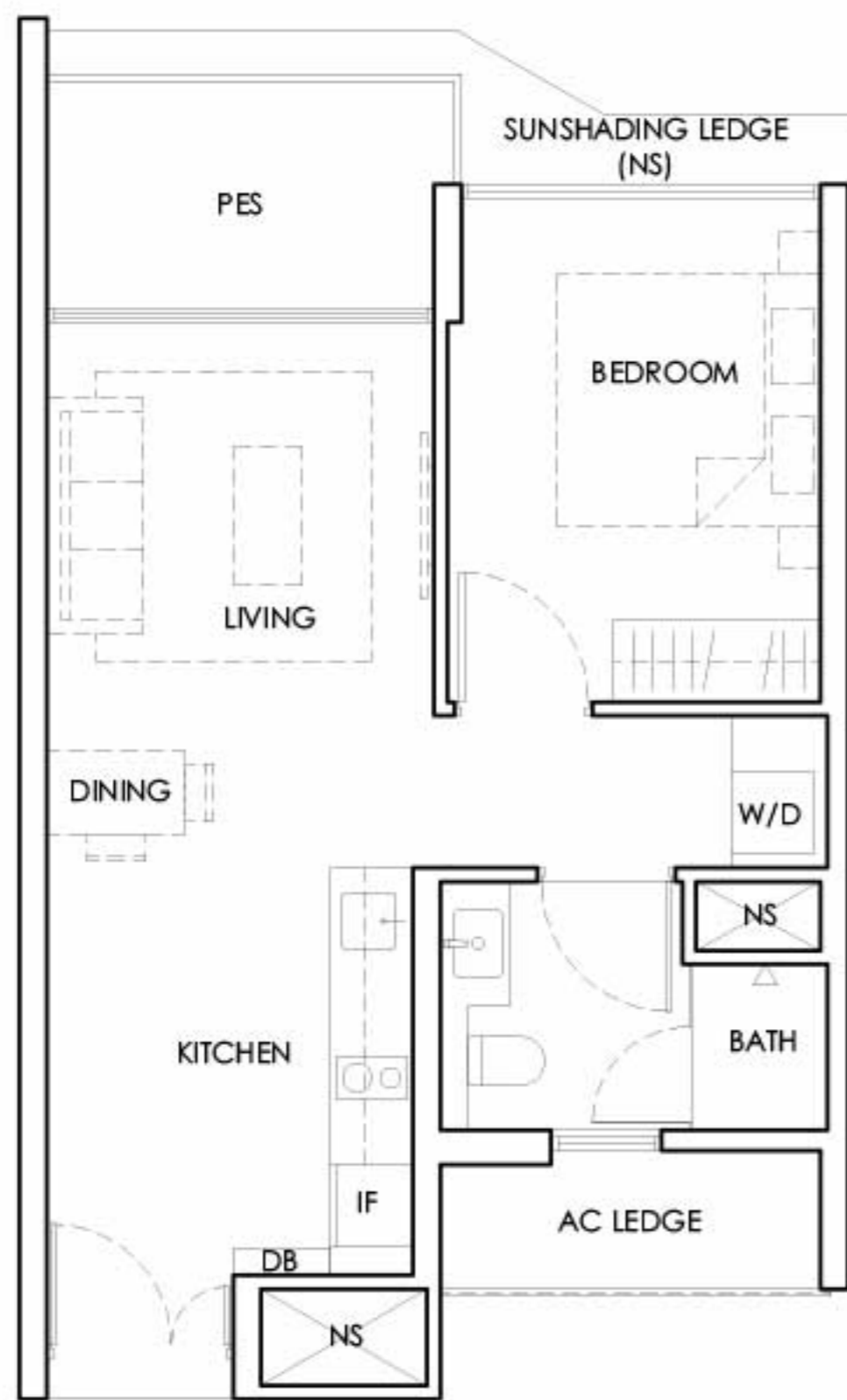
 1 BEDROOM	 3 BEDROOM
 2 BEDROOM	 3 BEDROOM + STUDY
 2 BEDROOM + STUDY	 4 BEDROOM + STUDY



T Y P E A 1

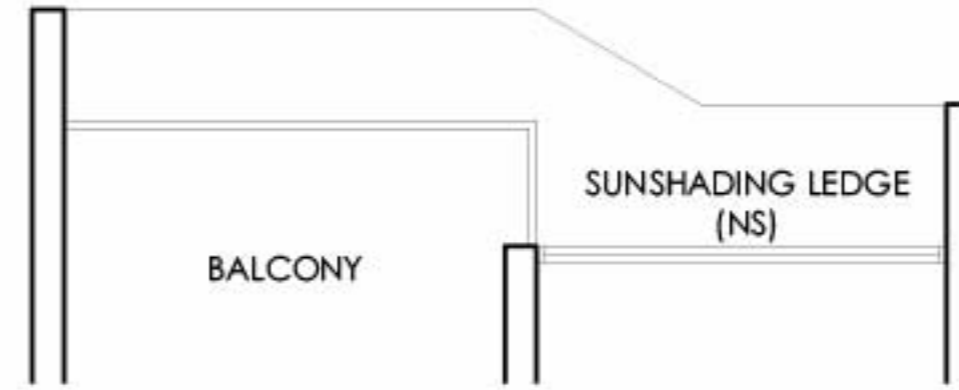
1 BEDROOM
 TYPE A1P 1st Storey
 Area 49 sq m / 528 sq ft
 1 unit

#01-18



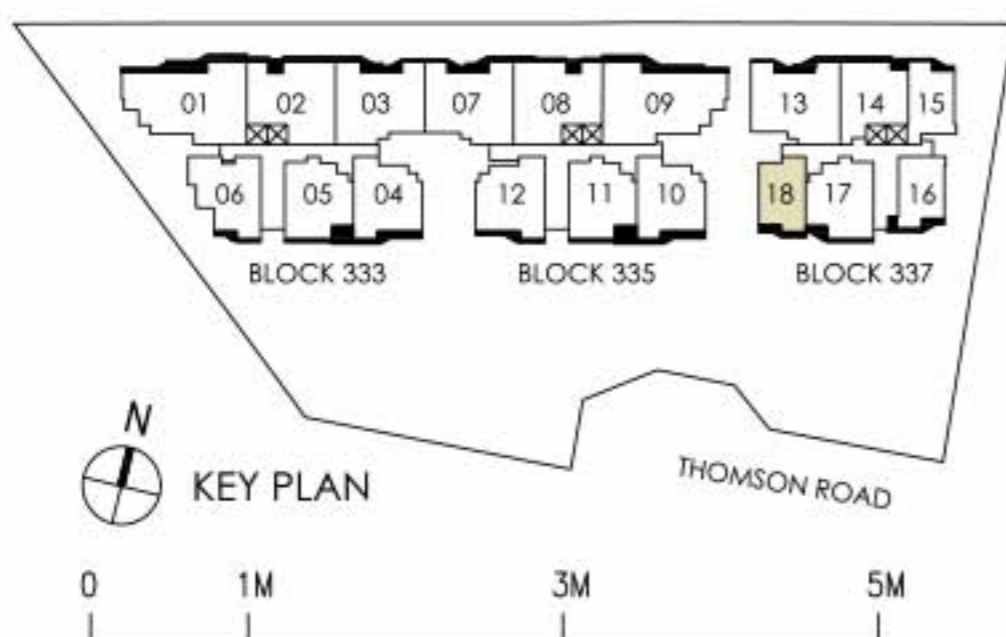
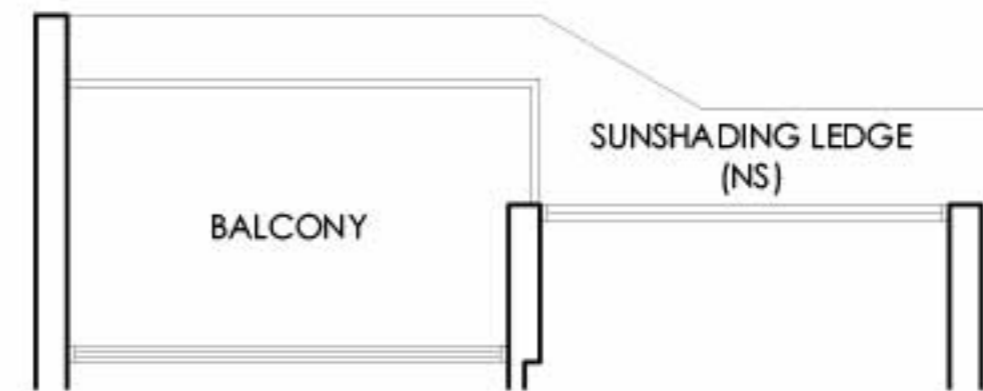
1 BEDROOM
 TYPE A1 2nd & 4th Storey
 Area 49 sq m / 528 sq ft
 2 units

#02-18 and #04-18



1 BEDROOM
 TYPE A1 3rd & 5th Storey
 Area 49 sq m / 528 sq ft
 2 units

#03-18 and #05-18



LEGEND
 DB : Distribution Board AC LEDGE : Air-Conditioner Ledge IF : Integrated Fridge
 W/D : Washer-Dryer NS : Non-Strata Area PES : Private Enclosed Space

The total area includes AC ledge, balcony and private enclosed space (where applicable). The above plans and illustrations are subject to changes as required by relevant authorities. Areas are estimated and are subject to final survey by registered surveyor. The balcony cannot be enclosed unless with approved screen, as illustrated in diagram annexed hereto as 'Annexure 1'.

T Y P E A 2

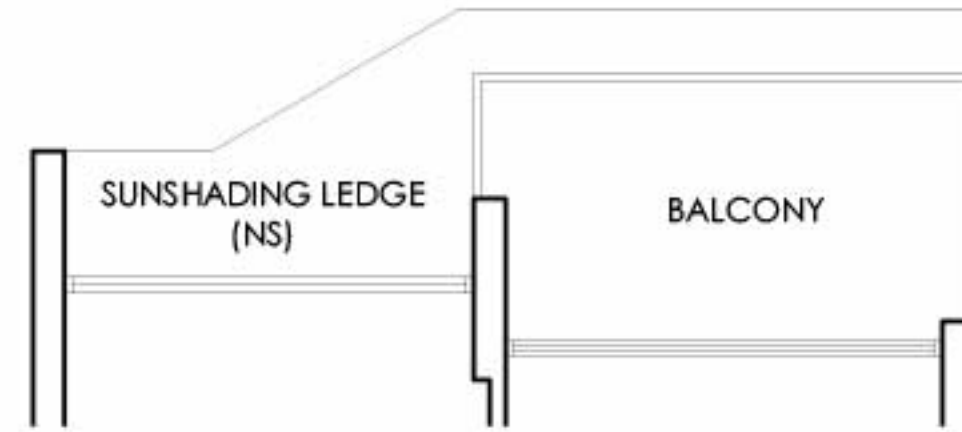
1 BEDROOM
TYPE A2P 1st Storey
Area 50 sq m / 539 sq ft
1 unit

#01-16



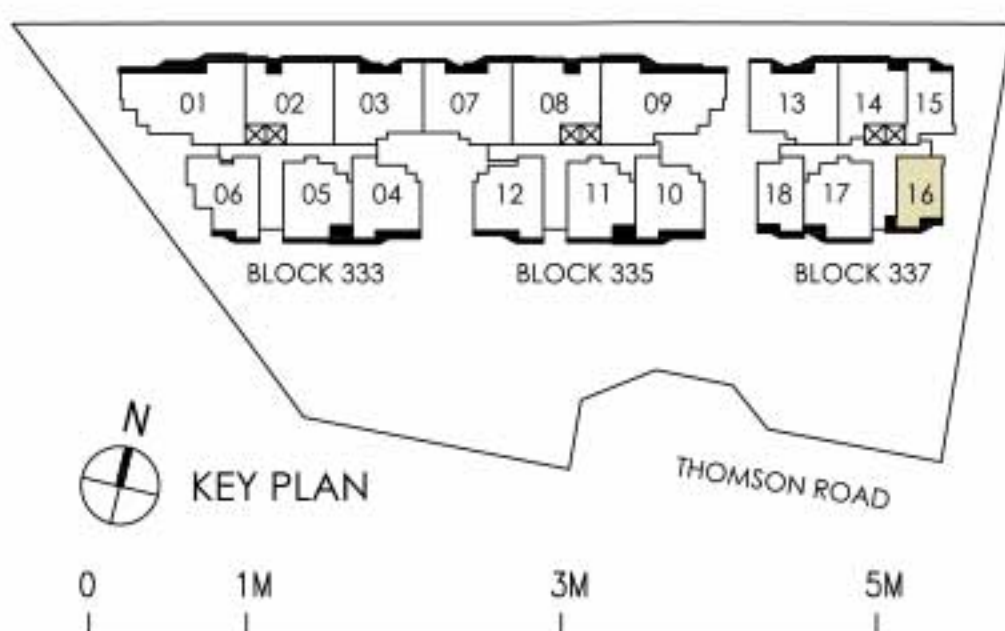
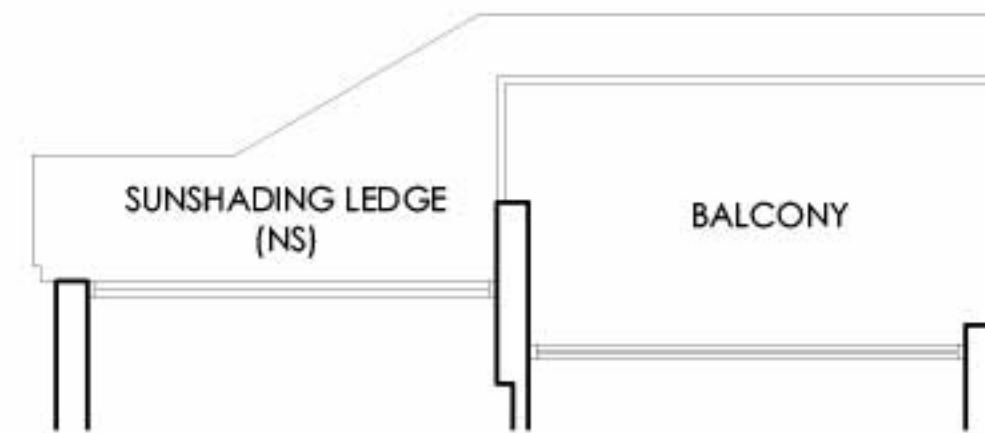
1 BEDROOM
TYPE A2 2nd & 4th Storey
Area 50 sq m / 539 sq ft
2 units

#02-16 and #04-16



1 BEDROOM
TYPE A2 3rd & 5th Storey
Area 50 sq m / 539 sq ft
2 units

#03-16 and #05-16



LEGEND
 DB : Distribution Board AC LEDGE : Air-Conditioner Ledge IF : Integrated Fridge
 W/D : Washer-Dryer NS : Non-Strata Area PES : Private Enclosed Space

The total area includes AC ledge, balcony and private enclosed space (where applicable). The above plans and illustrations are subject to changes as required by relevant authorities. Areas are estimated and are subject to final survey by registered surveyor. The balcony cannot be enclosed unless with approved screen, as illustrated in diagram annexed hereto as 'Annexure 1'.

TYPE A 3

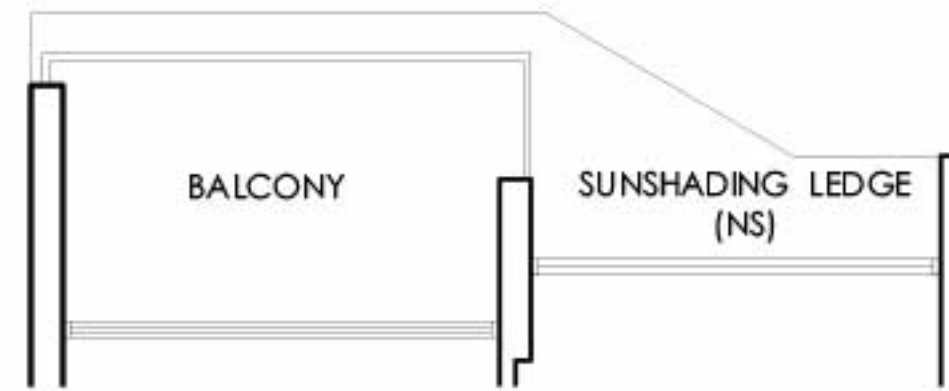
1 BEDROOM
TYPE A3P 1st Storey
Area 52 sq m / 560 sq ft
1 unit

#01-15



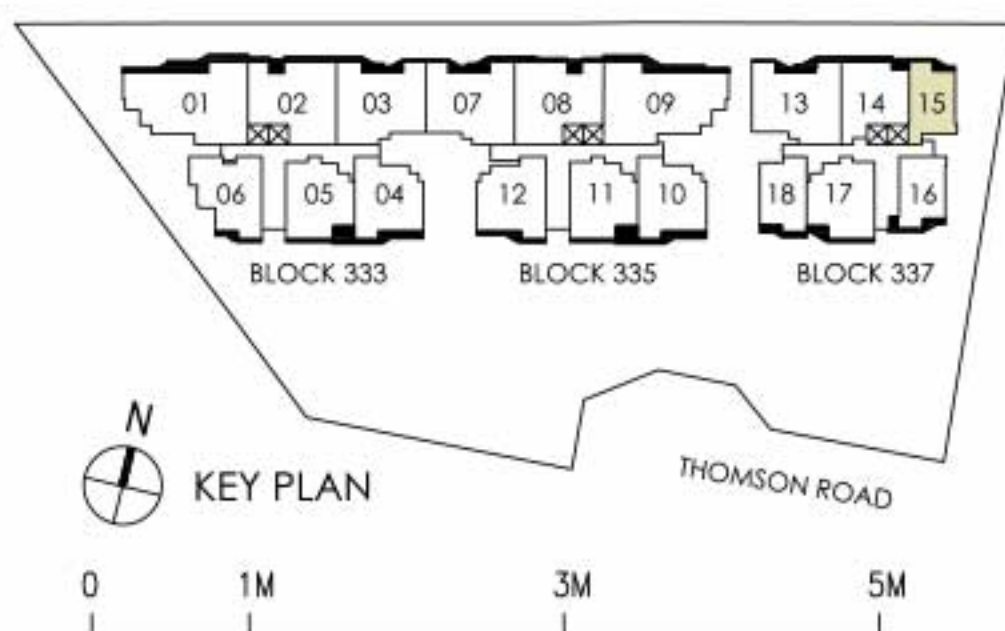
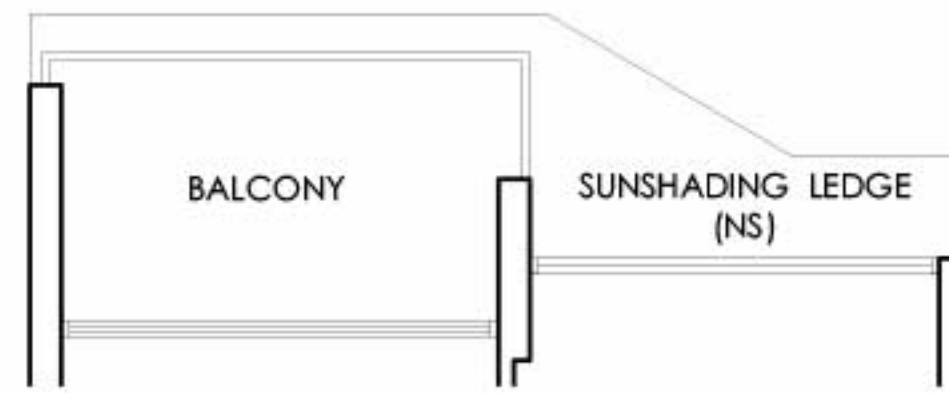
1 BEDROOM
TYPE A3 2nd & 4th Storey
Area 52 sq m / 560 sq ft
2 units

#02-15 and #04-15



1 BEDROOM
TYPE A3 3rd & 5th Storey
Area 52 sq m / 560 sq ft
2 units

#03-15 and #05-15



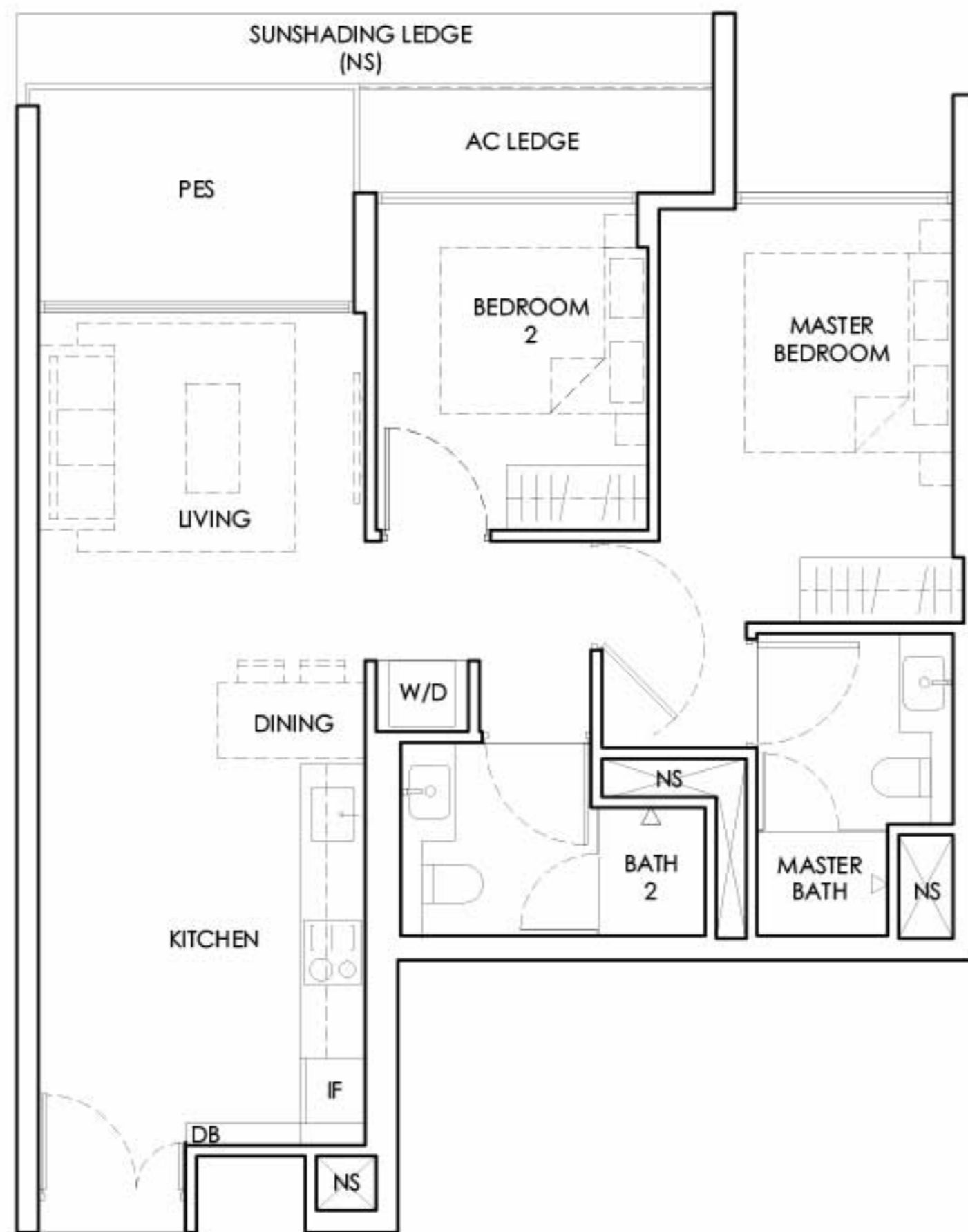
LEGEND
 DB : Distribution Board AC LEDGE : Air-Conditioner Ledge IF : Integrated Fridge
 W/D : Washer-Dryer NS : Non-Strata Area PES : Private Enclosed Space

The total area includes AC ledge, balcony and private enclosed space (where applicable). The above plans and illustrations are subject to changes as required by relevant authorities. Areas are estimated and are subject to final survey by registered surveyor. The balcony cannot be enclosed unless with approved screen, as illustrated in diagram annexed hereto as 'Annexure 1'.

TYPE B 1

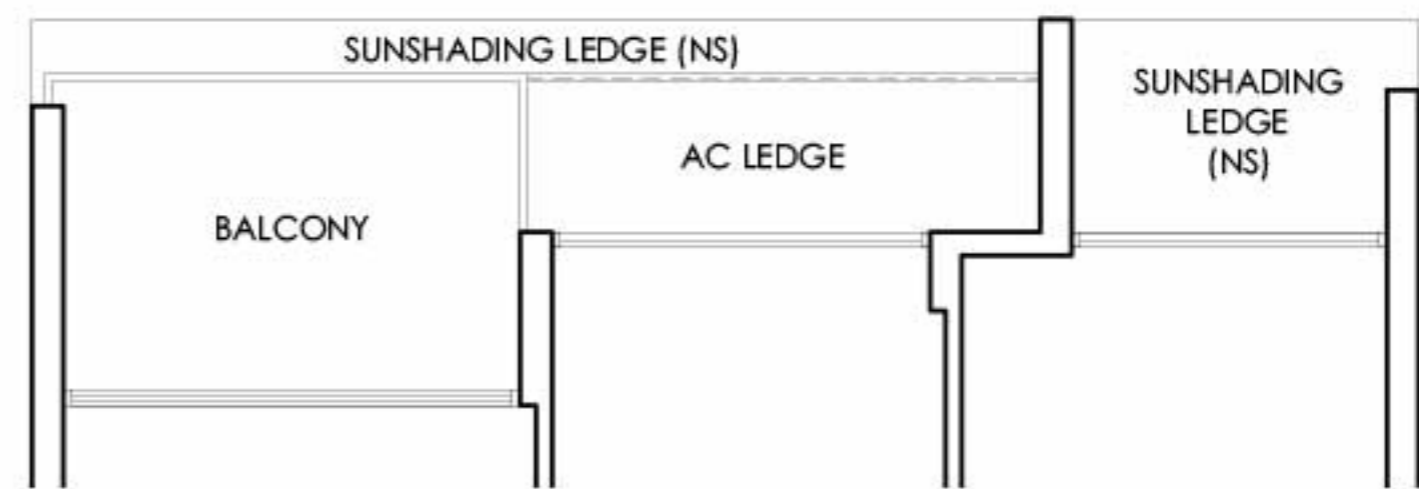
2 BEDROOM
TYPE B1P 1st Storey
Area 72 sq m / 776 sq ft
1 unit

#01-14



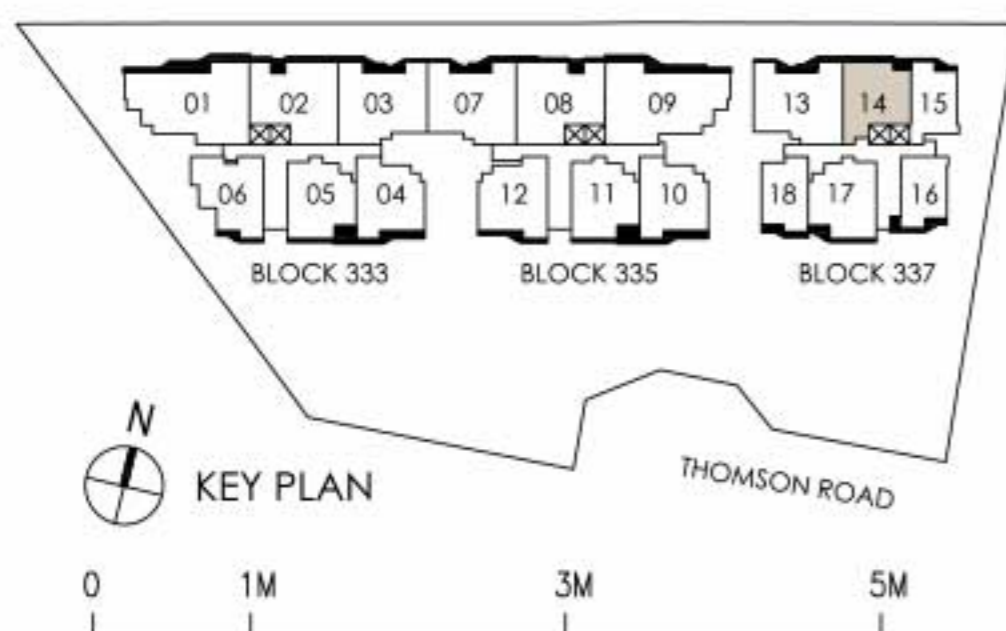
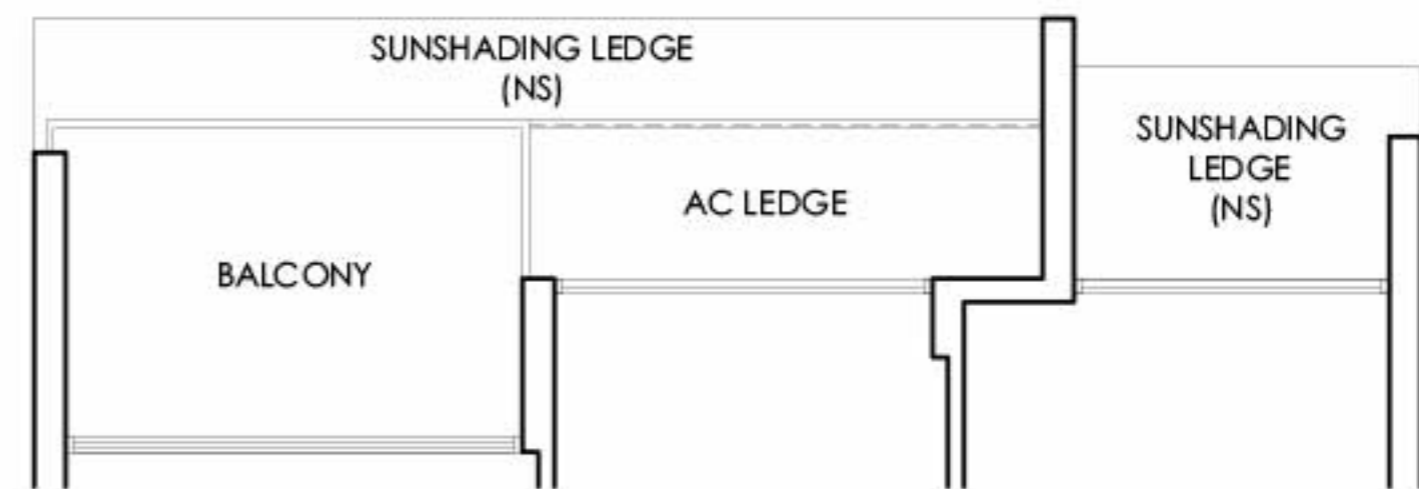
2 BEDROOM
TYPE B1 2nd & 4th Storey
Area 72 sq m / 776 sq ft
2 units

#02-14 and #04-14



2 BEDROOM
TYPE B1 3rd & 5th Storey
Area 72 sq m / 776 sq ft
2 units

#03-14 and #05-14



LEGEND
 DB : Distribution Board AC LEDGE : Air-Conditioner Ledge IF : Integrated Fridge
 W/D : Washer-Dryer NS : Non-Strata Area PES : Private Enclosed Space

The total area includes AC ledge, balcony and private enclosed space (where applicable). The above plans and illustrations are subject to changes as required by relevant authorities. Areas are estimated and are subject to final survey by registered surveyor. The balcony cannot be enclosed unless with approved screen, as illustrated in diagram annexed hereto as 'Annexure 1'.

TYPE B 2

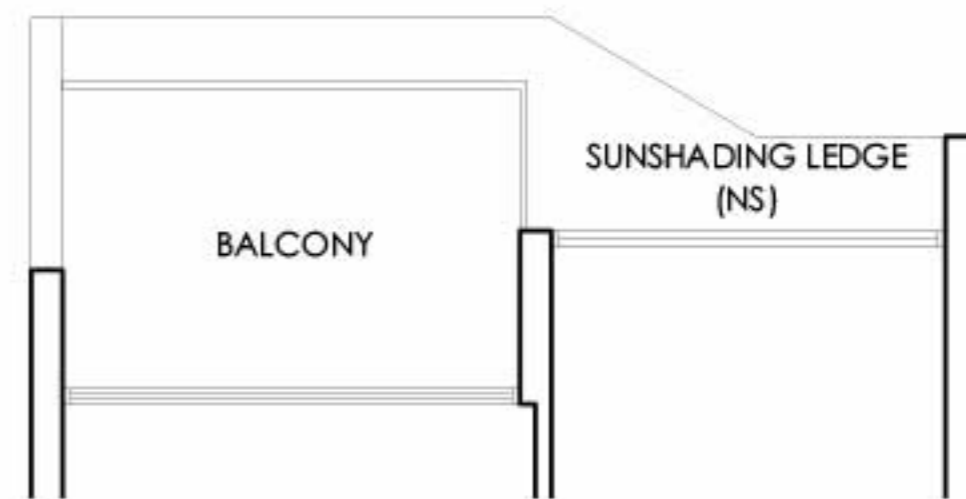
2 BEDROOM
TYPE B2P 1st Storey
Area 74 sq m / 797 sq ft
1 unit

#01-06



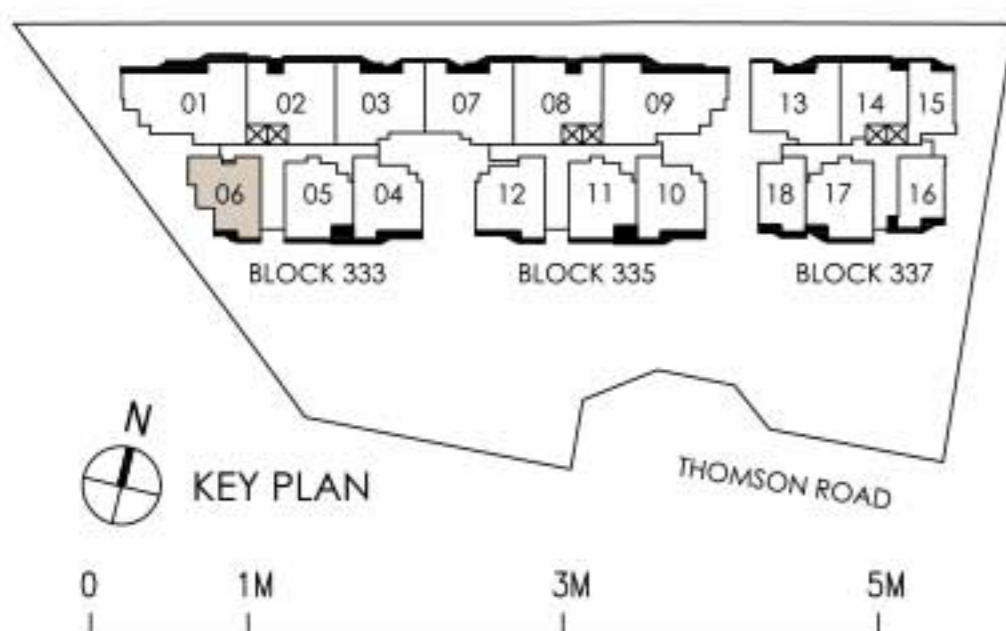
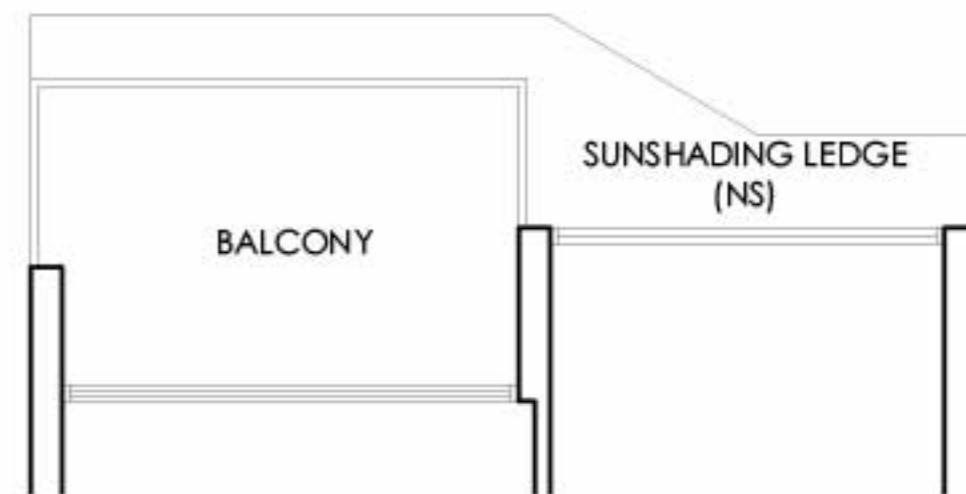
2 BEDROOM
TYPE B2 2nd & 4th Storey
Area 74 sq m / 797 sq ft
2 units

#02-06 and #04-06



2 BEDROOM
TYPE B2 3rd & 5th Storey
Area 74 sq m / 797 sq ft
2 units

#03-06 and #05-06



LEGEND
 DB : Distribution Board AC LEDGE : Air-Conditioner Ledge IF : Integrated Fridge
 W/D : Washer-Dryer NS : Non-Strata Area PES : Private Enclosed Space

The total area includes AC ledge, balcony and private enclosed space (where applicable). The above plans and illustrations are subject to changes as required by relevant authorities. Areas are estimated and are subject to final survey by registered surveyor. The balcony cannot be enclosed unless with approved screen, as illustrated in diagram annexed hereto as 'Annexure 1'.

TYPE B 3

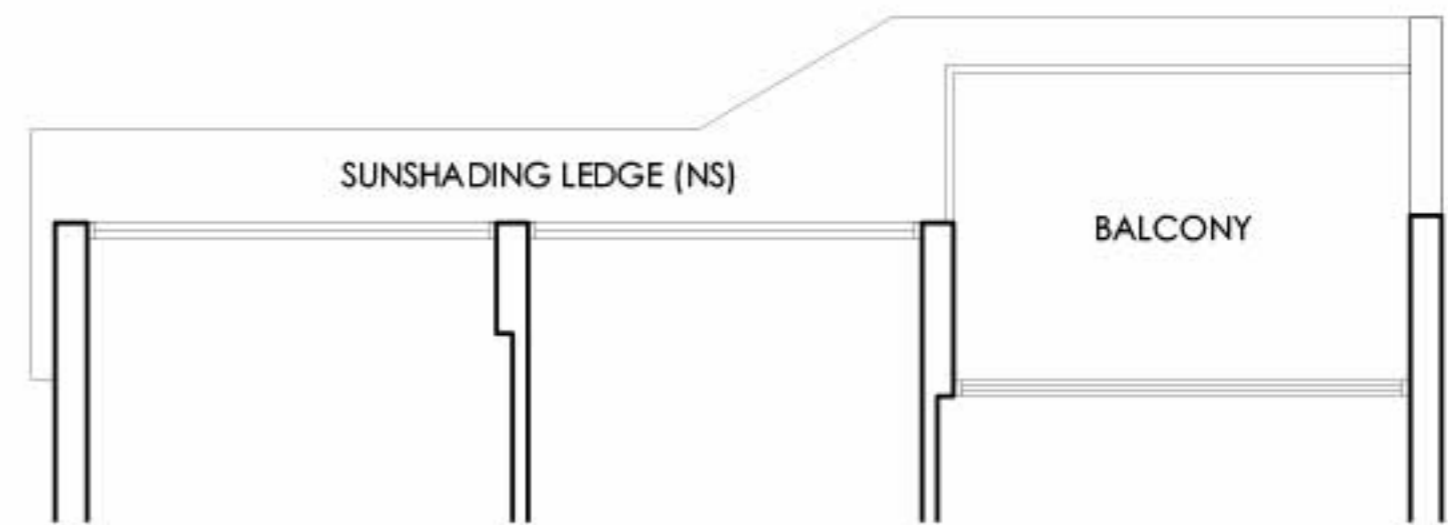
2 BEDROOM
TYPE B3P 1st Storey
Area 75 sq m / 808 sq ft
1 unit

#01-10



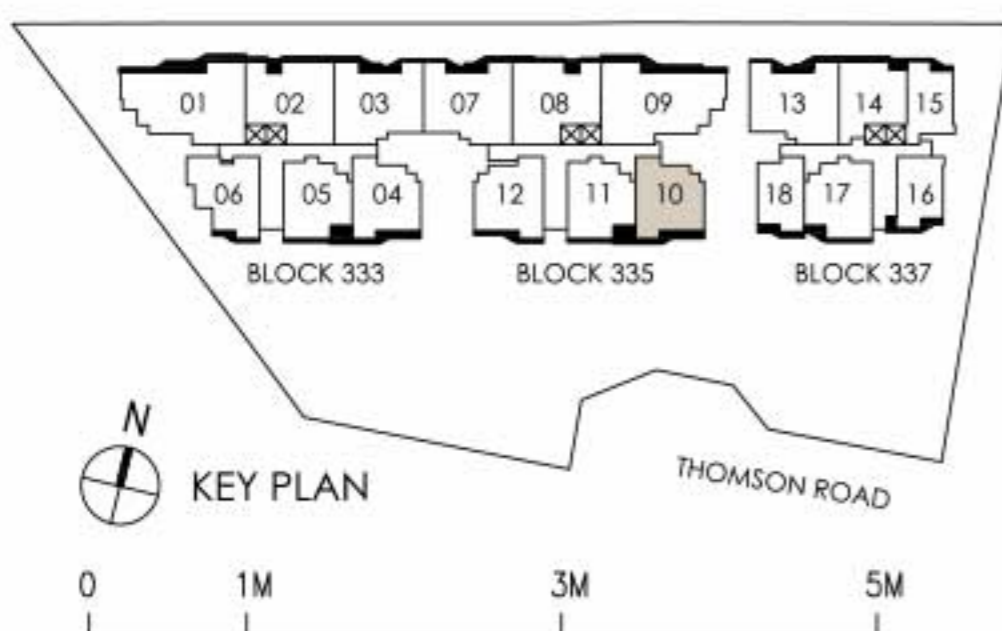
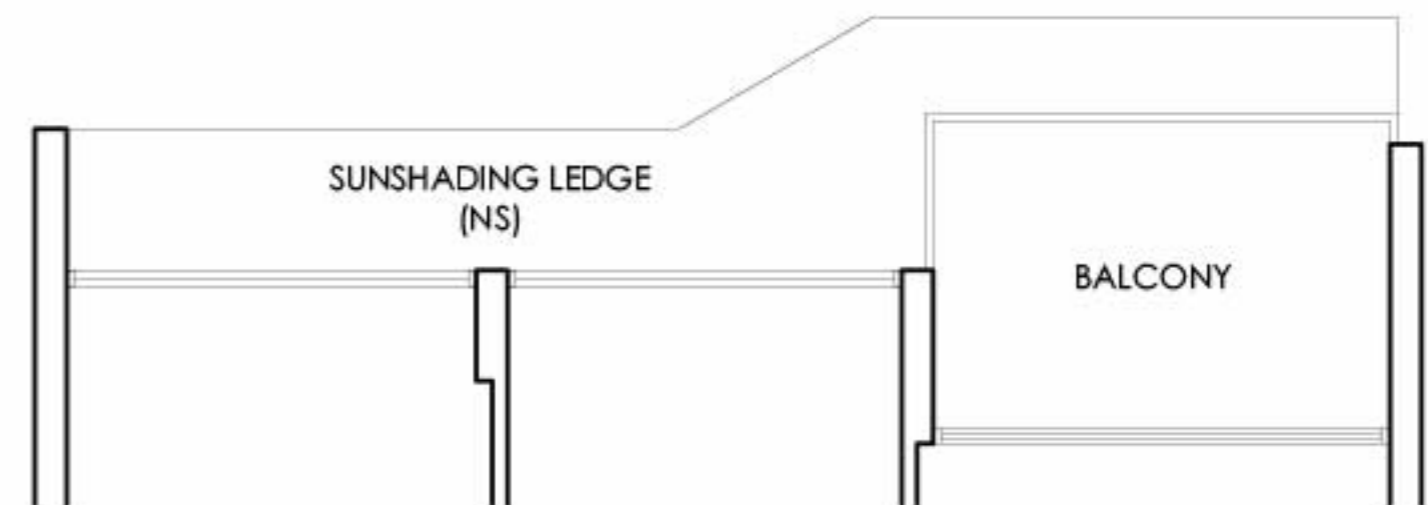
2 BEDROOM
TYPE B3 2nd & 4th Storey
Area 75 sq m / 808 sq ft
2 units

#02-10 and #04-10



2 BEDROOM
TYPE B3 3rd & 5th Storey
Area 75 sq m / 808 sq ft
2 units

#03-10 and #05-10



LEGEND
 DB : Distribution Board AC LEDGE : Air-Conditioner Ledge IF : Integrated Fridge
 W/D : Washer-Dryer NS : Non-Strata Area PES : Private Enclosed Space

The total area includes AC ledge, balcony and private enclosed space (where applicable). The above plans and illustrations are subject to changes as required by relevant authorities. Areas are estimated and are subject to final survey by registered surveyor. The balcony cannot be enclosed unless with approved screen, as illustrated in diagram annexed hereto as 'Annexure 1'.

TYPE B 3 A

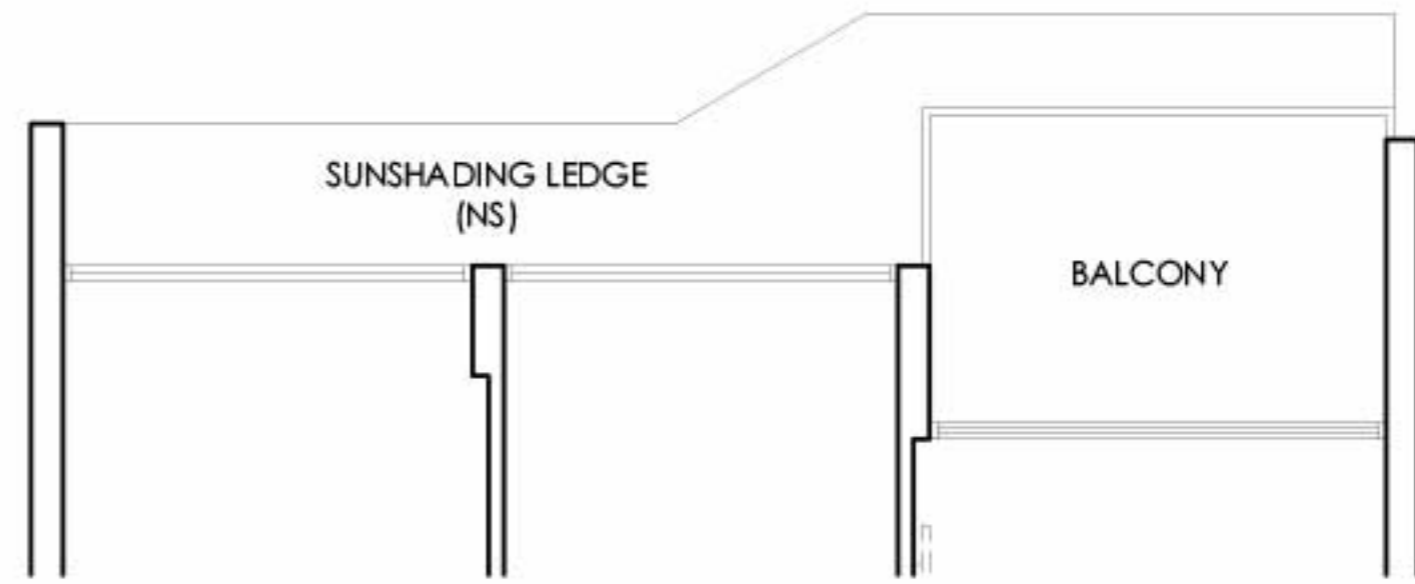
2 BEDROOM
TYPE B3AP 1st Storey
Area 75 sq m / 808 sq ft
1 unit

#01-04



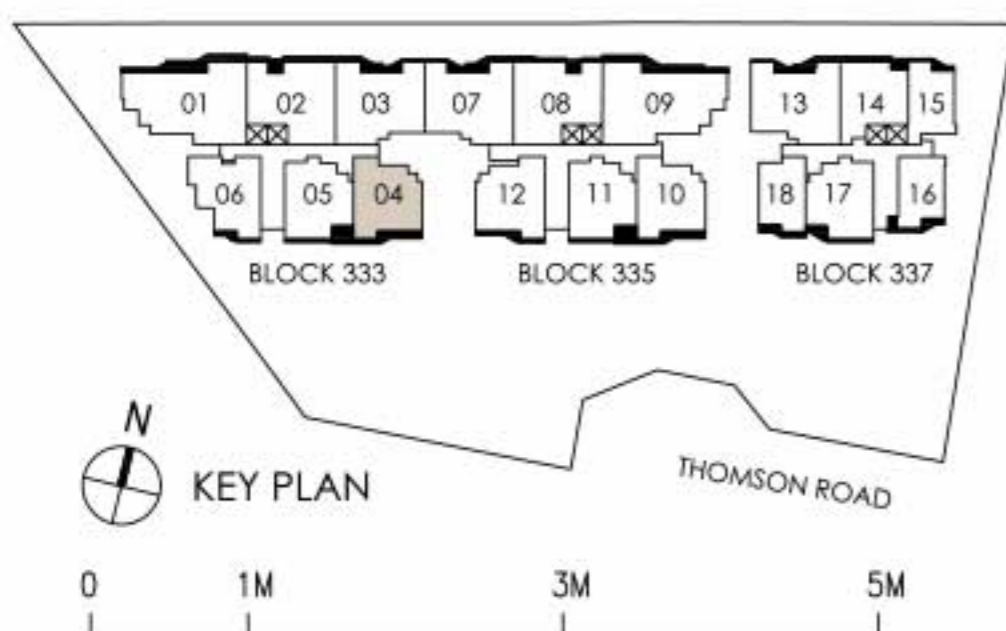
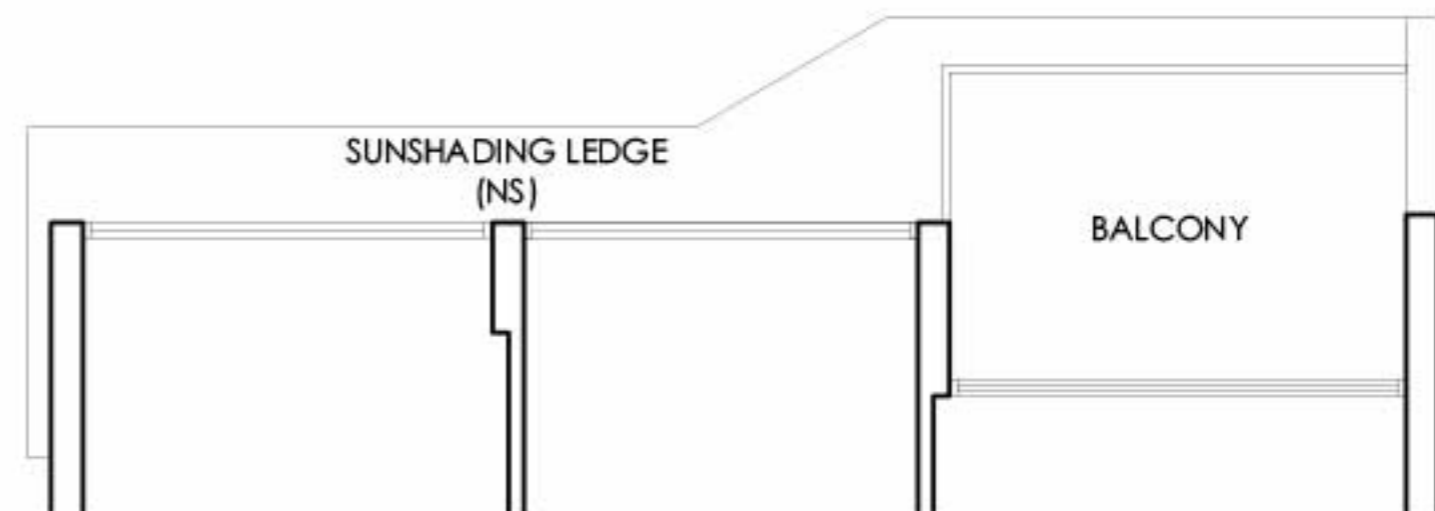
2 BEDROOM
TYPE B3A 2nd & 4th Storey
Area 75 sq m / 808 sq ft
2 units

#02-04 and #04-04



2 BEDROOM
TYPE B3A 3rd & 5th Storey
Area 75 sq m / 808 sq ft
2 units

#03-04 and #05-04



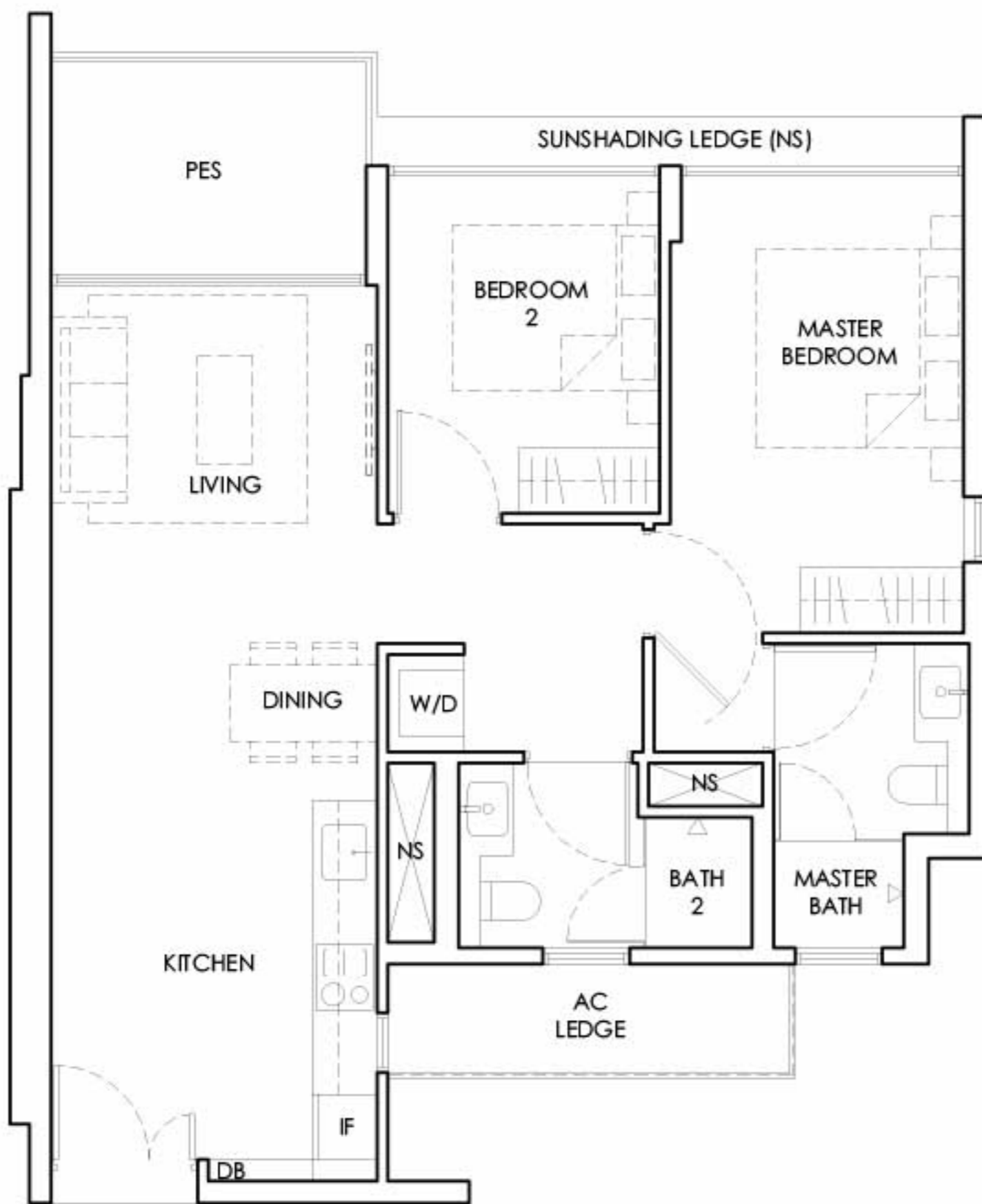
LEGEND
 DB : Distribution Board AC LEDGE : Air-Conditioner Ledge IF : Integrated Fridge
 W/D : Washer-Dryer NS : Non-Strata Area PES : Private Enclosed Space

The total area includes AC ledge, balcony and private enclosed space (where applicable). The above plans and illustrations are subject to changes as required by relevant authorities. Areas are estimated and are subject to final survey by registered surveyor. The balcony cannot be enclosed unless with approved screen, as illustrated in diagram annexed hereto as 'Annexure 1'.

TYPE B3B

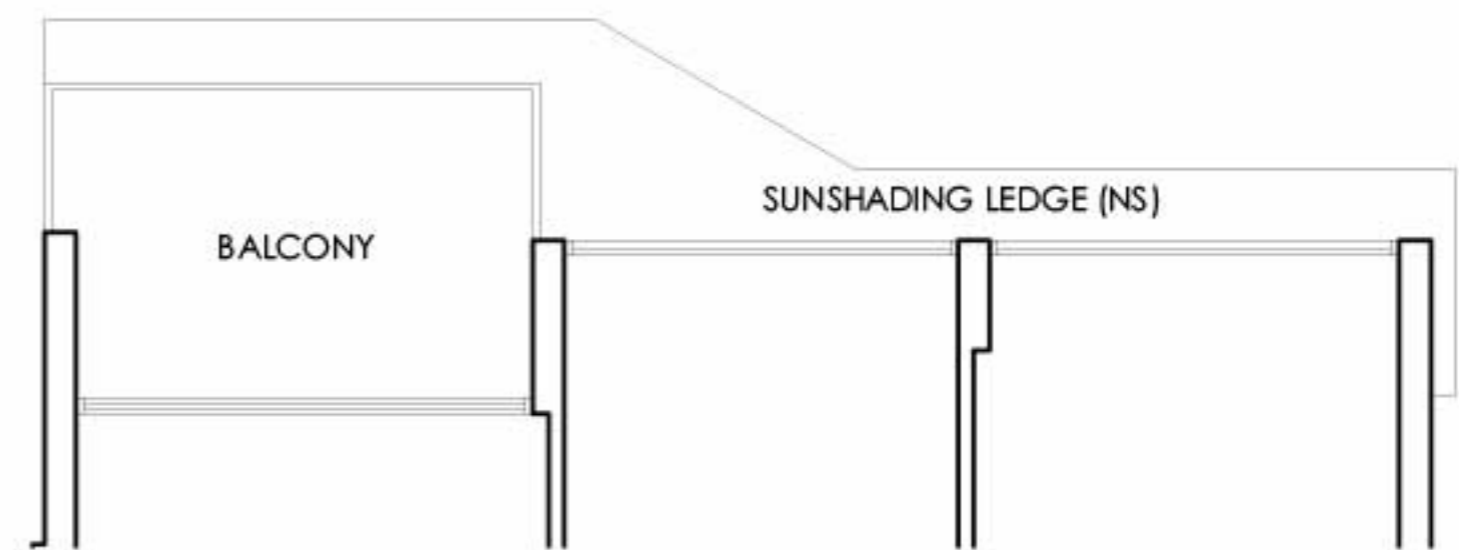
2 BEDROOM
TYPE B3BP 1st Storey
Area 75 sq m / 808 sq ft
1 unit

#01-12



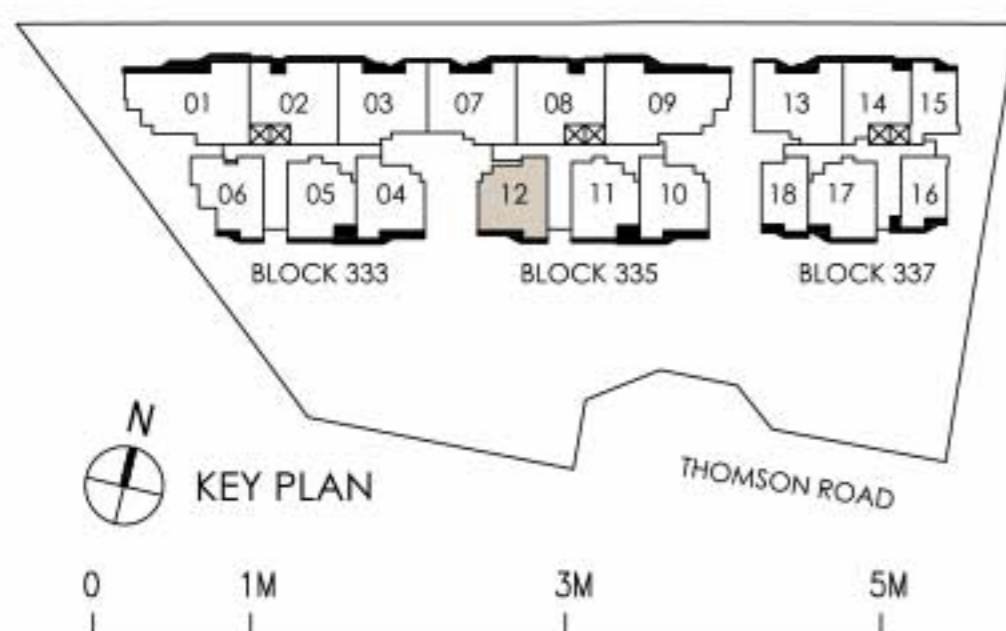
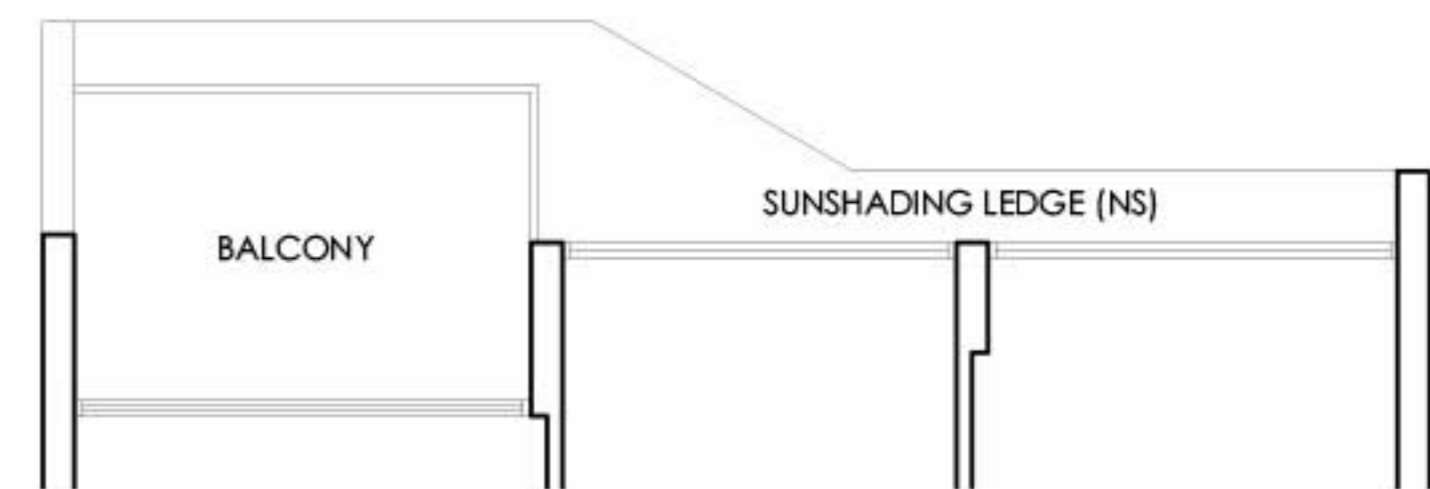
2 BEDROOM
TYPE B3B 2nd & 4th Storey
Area 75 sq m / 808 sq ft
2 units

#02-12 and #04-12



2 BEDROOM
TYPE B3B 3rd & 5th Storey
Area 75 sq m / 808 sq ft
2 units

#03-12 and #05-12



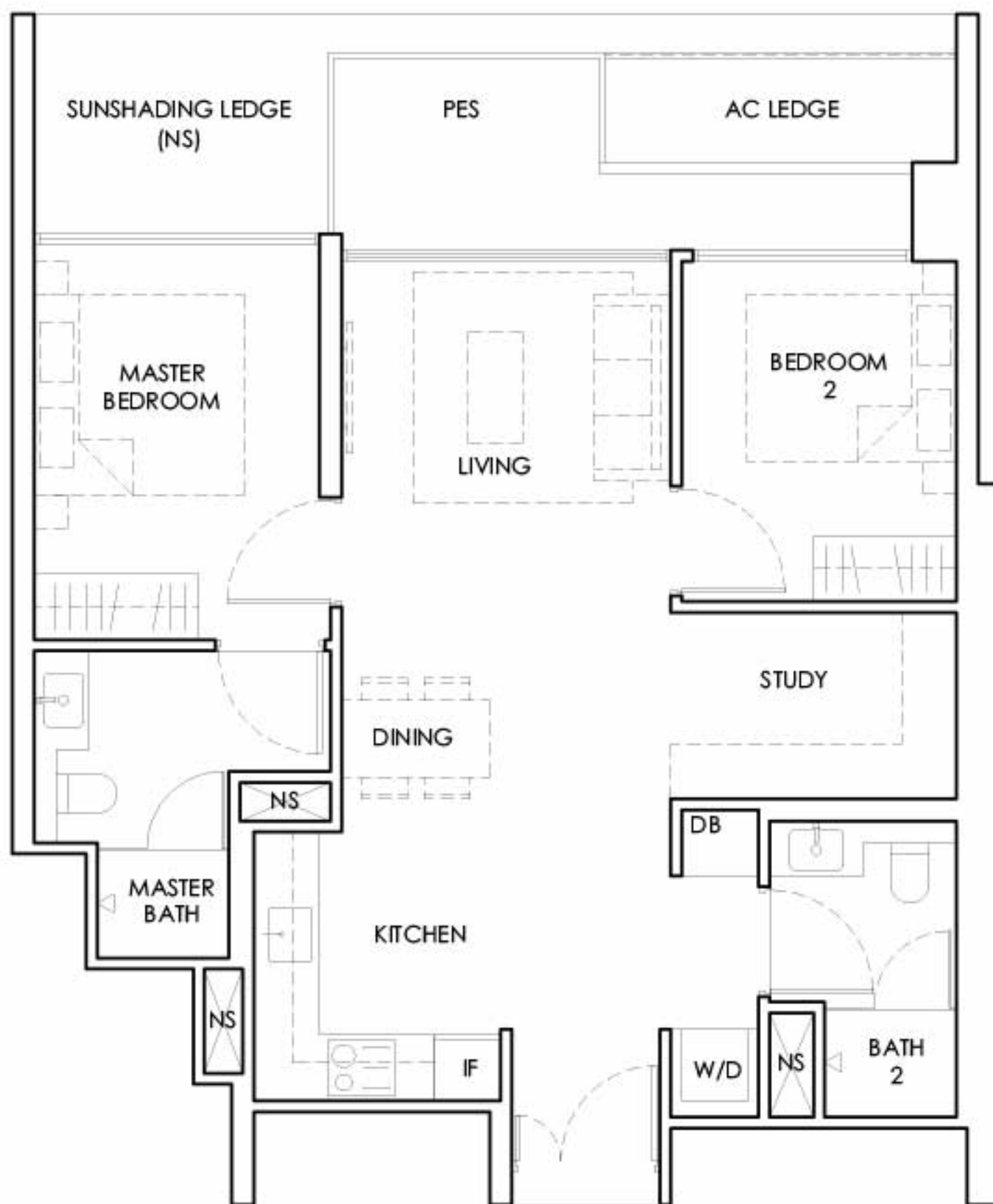
LEGEND
 DB : Distribution Board AC LEDGE : Air-Conditioner Ledge IF : Integrated Fridge
 W/D : Washer-Dryer NS : Non-Strata Area PES : Private Enclosed Space

The total area includes AC ledge, balcony and private enclosed space (where applicable). The above plans and illustrations are subject to changes as required by relevant authorities. Areas are estimated and are subject to final survey by registered surveyor. The balcony cannot be enclosed unless with approved screen, as illustrated in diagram annexed hereto as 'Annexure 1'.

TYPE B4 - 1

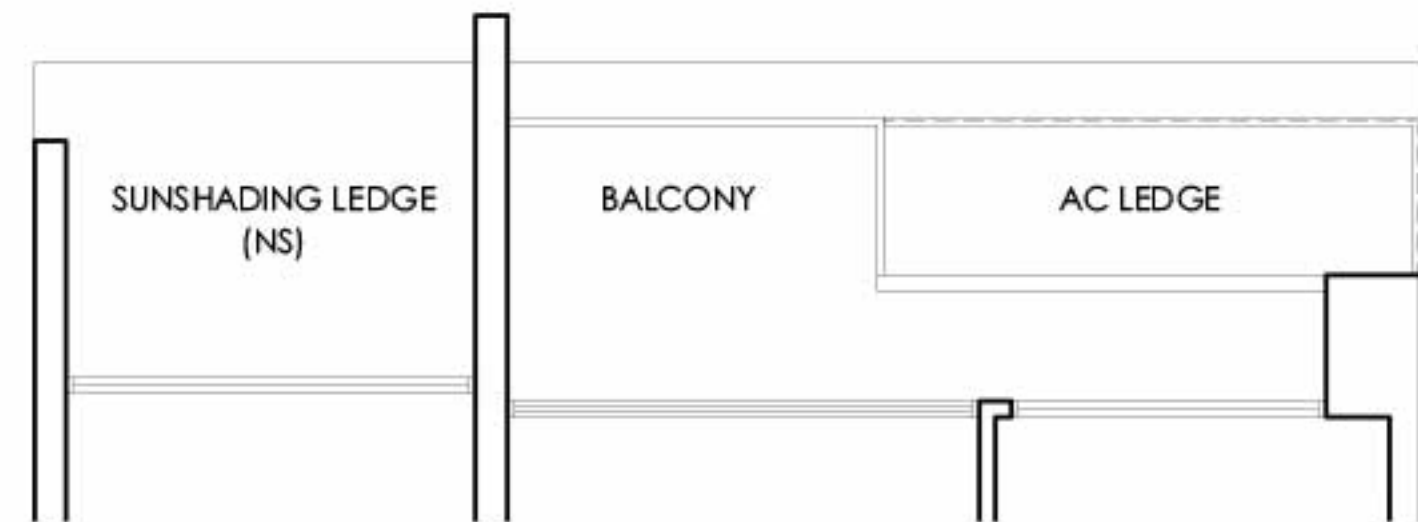
2 BEDROOM + STUDY
 TYPE B4-1P 1st Storey
 Area 77 sq m / 829 sq ft
 1 unit

#01-05



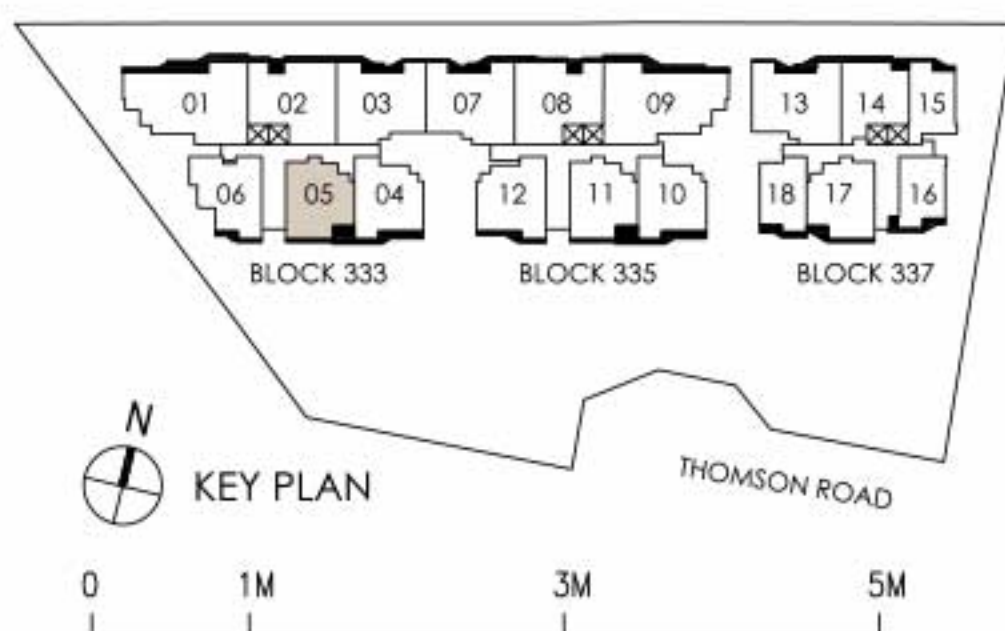
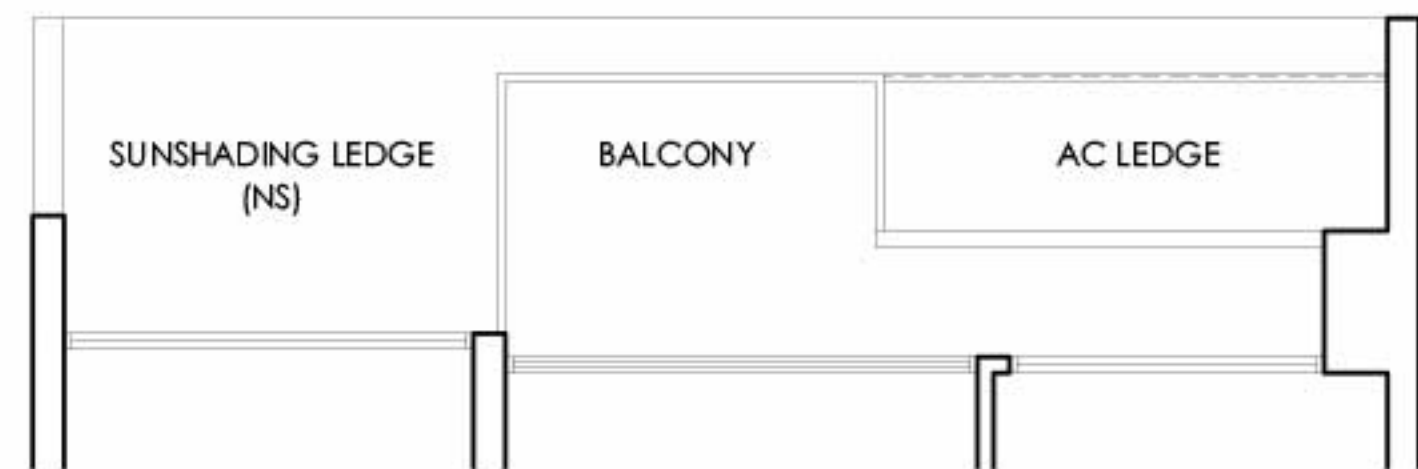
2 BEDROOM + STUDY
 TYPE B4-1 2nd & 4th Storey
 Area 77 sq m / 829 sq ft
 2 units

#02-05 and #04-05



2 BEDROOM + STUDY
 TYPE B4-1 3rd & 5th Storey
 Area 77 sq m / 829 sq ft
 2 units

#03-05 and #05-05



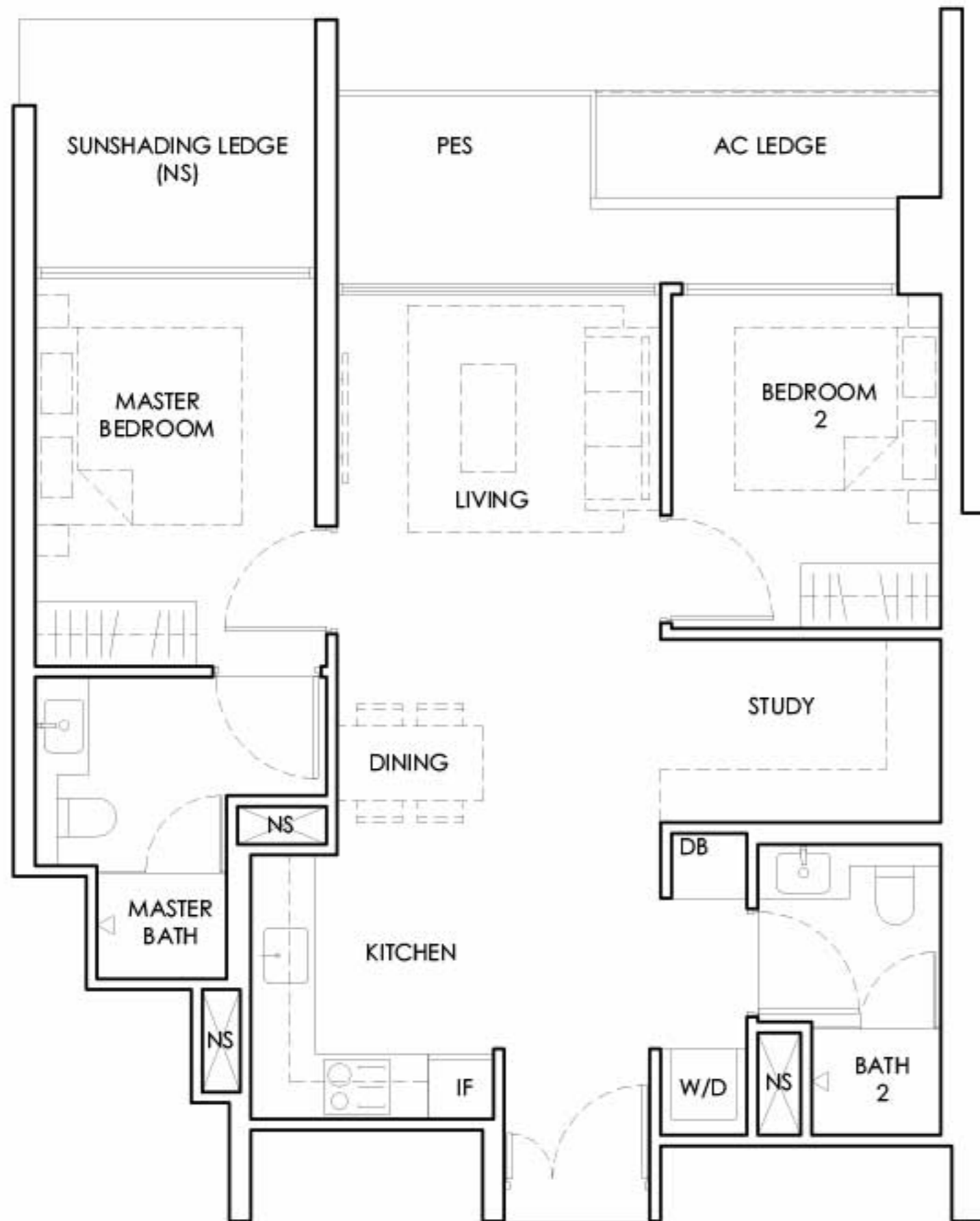
LEGEND
 DB : Distribution Board AC LEDGE : Air-Conditioner Ledge IF : Integrated Fridge
 W/D : Washer-Dryer NS : Non-Strata Area PES : Private Enclosed Space

The total area includes AC ledge, balcony and private enclosed space (where applicable). The above plans and illustrations are subject to changes as required by relevant authorities. Areas are estimated and are subject to final survey by registered surveyor. The balcony cannot be enclosed unless with approved screen, as illustrated in diagram annexed hereto as 'Annexure 1'.

TYPE B4 - 2

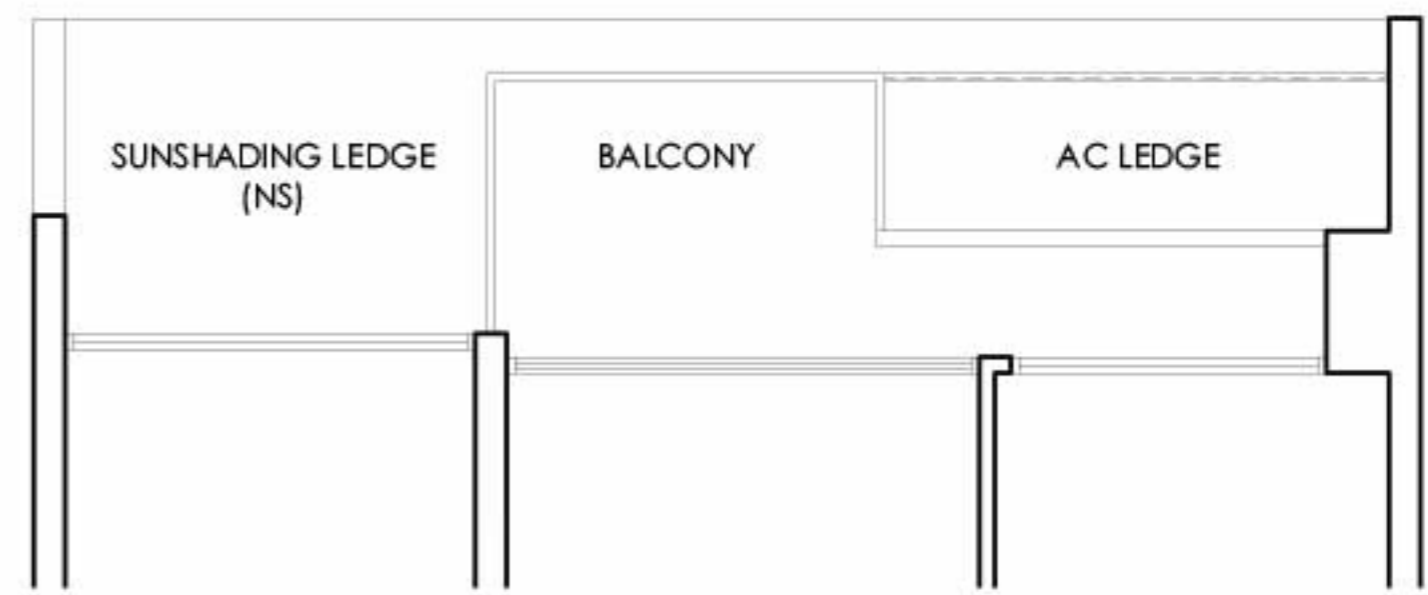
2 BEDROOM + STUDY
 TYPE B4-2P 1st Storey
 Area 77 sq m / 829 sq ft
 1 unit

#01-11



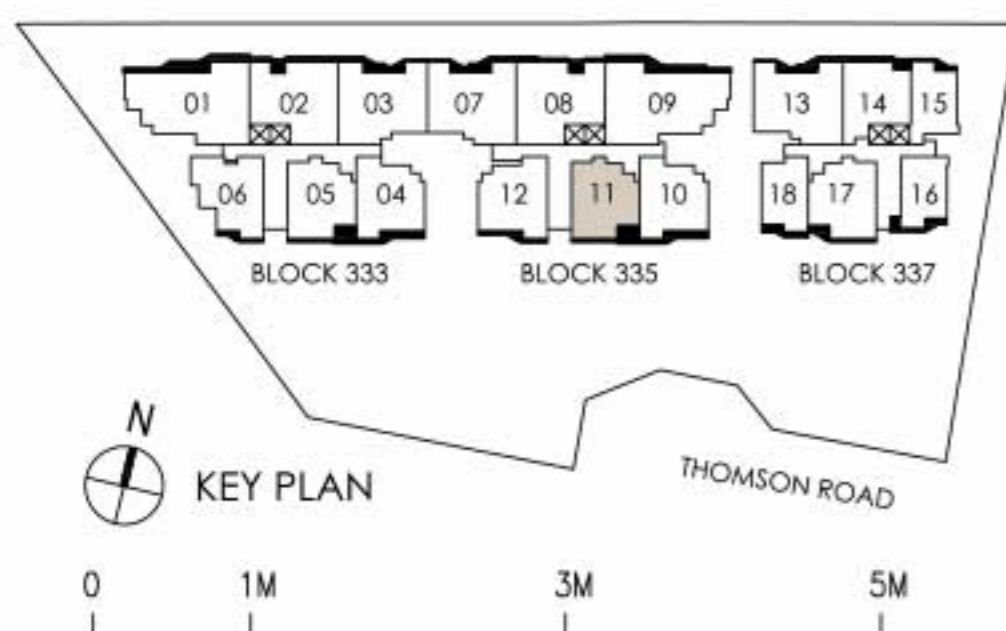
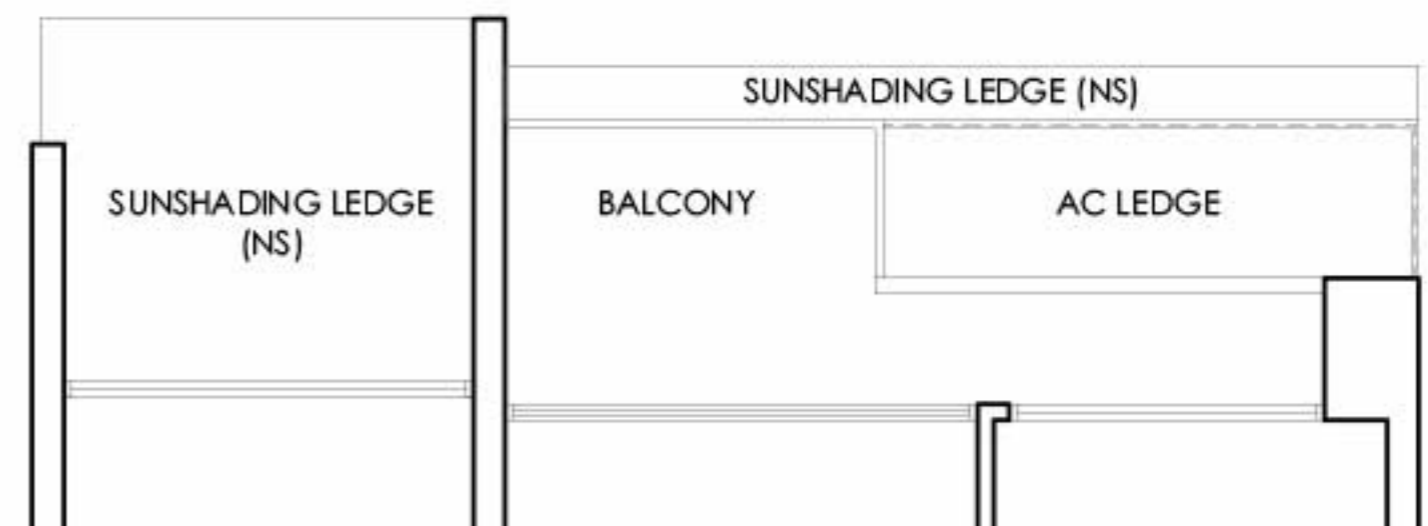
2 BEDROOM + STUDY
 TYPE B4-2 2nd & 4th Storey
 Area 77 sq m / 829 sq ft
 2 units

#02-11 and #04-11



2 BEDROOM + STUDY
 TYPE B4-2 3rd & 5th Storey
 Area 77 sq m / 829 sq ft
 2 units

#03-11 and #05-11



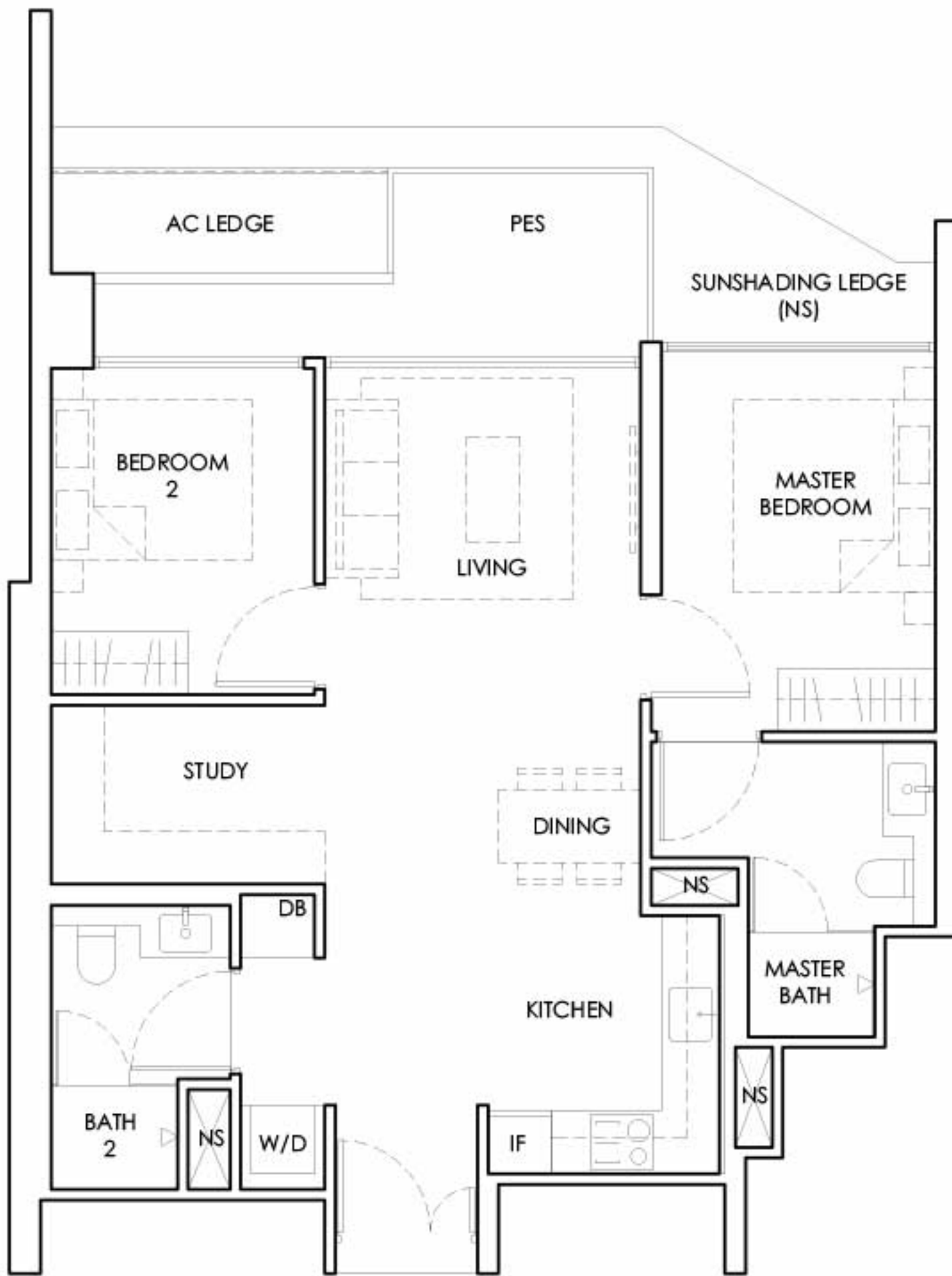
LEGEND
 DB : Distribution Board AC LEDGE : Air-Conditioner Ledge IF : Integrated Fridge
 W/D : Washer-Dryer NS : Non-Strata Area PES : Private Enclosed Space

The total area includes AC ledge, balcony and private enclosed space (where applicable). The above plans and illustrations are subject to changes as required by relevant authorities. Areas are estimated and are subject to final survey by registered surveyor. The balcony cannot be enclosed unless with approved screen, as illustrated in diagram annexed hereto as 'Annexure 1'.

TYPE B4-3

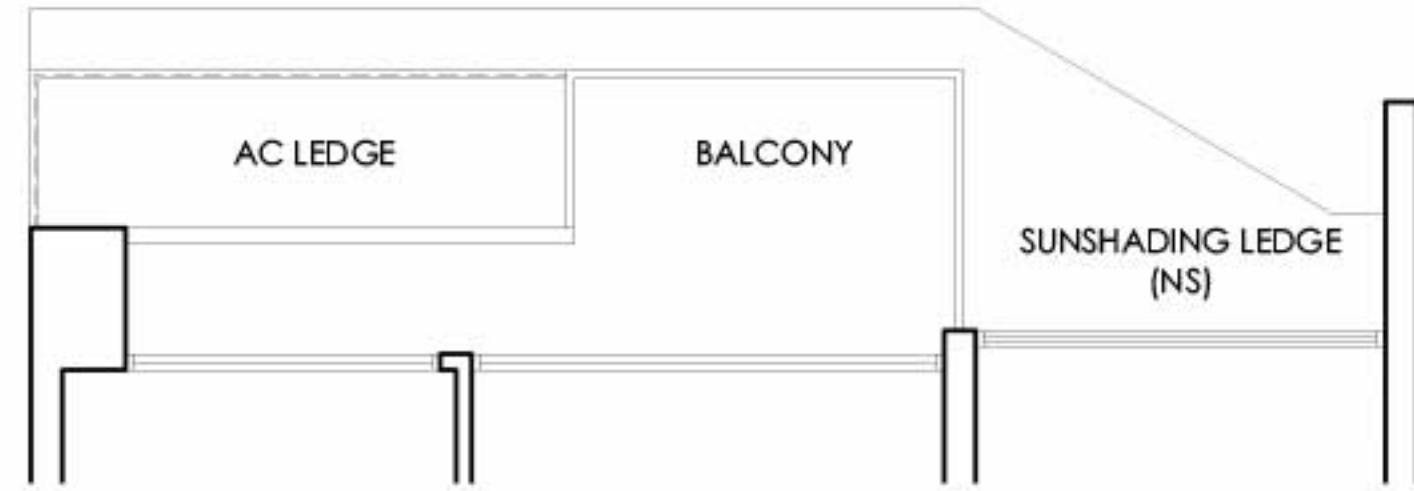
2 BEDROOM + STUDY
 TYPE B4-3P 1st Storey
 Area 77 sq m / 829 sq ft
 1 unit

#01-17



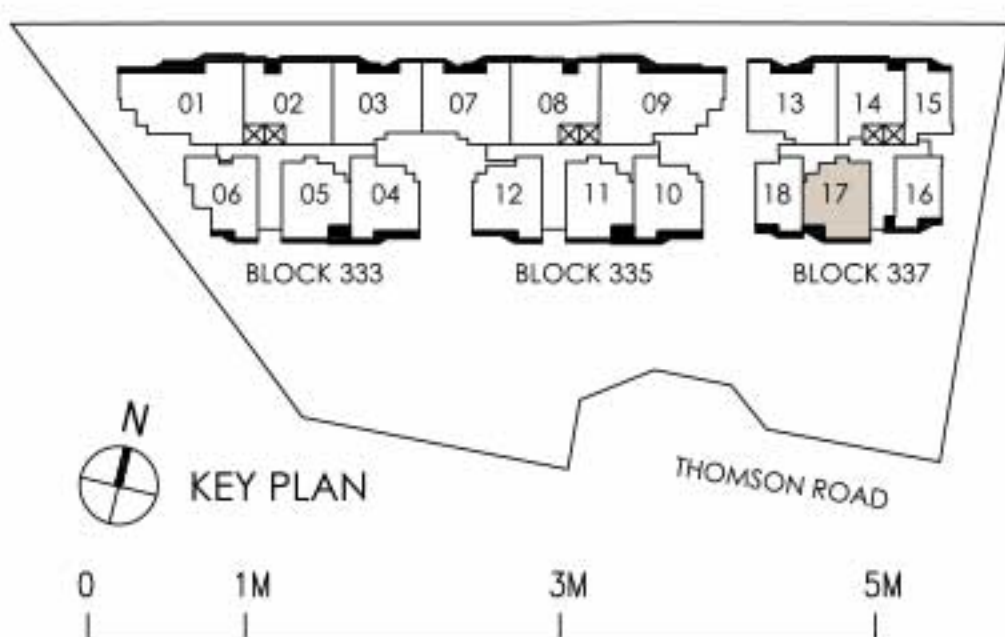
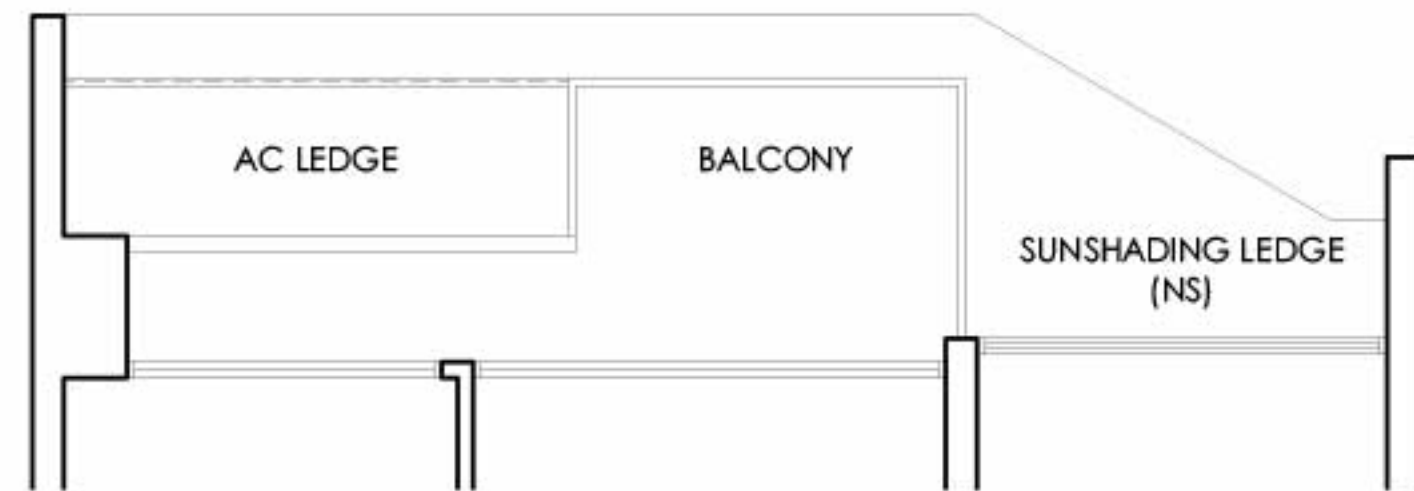
2 BEDROOM + STUDY
 TYPE B4-3 2nd & 4th Storey
 Area 77 sq m / 829 sq ft
 2 units

#02-17 and #04-17



2 BEDROOM + STUDY
 TYPE B4-3 3rd & 5th Storey
 Area 77 sq m / 829 sq ft
 2 units

#03-17 and #05-17



LEGEND
 DB : Distribution Board AC LEDGE : Air-Conditioner Ledge IF : Integrated Fridge
 W/D : Washer-Dryer NS : Non-Strata Area PES : Private Enclosed Space

The total area includes AC ledge, balcony and private enclosed space (where applicable). The above plans and illustrations are subject to changes as required by relevant authorities. Areas are estimated and are subject to final survey by registered surveyor. The balcony cannot be enclosed unless with approved screen, as illustrated in diagram annexed hereto as 'Annexure 1'.

TYPE C1-1

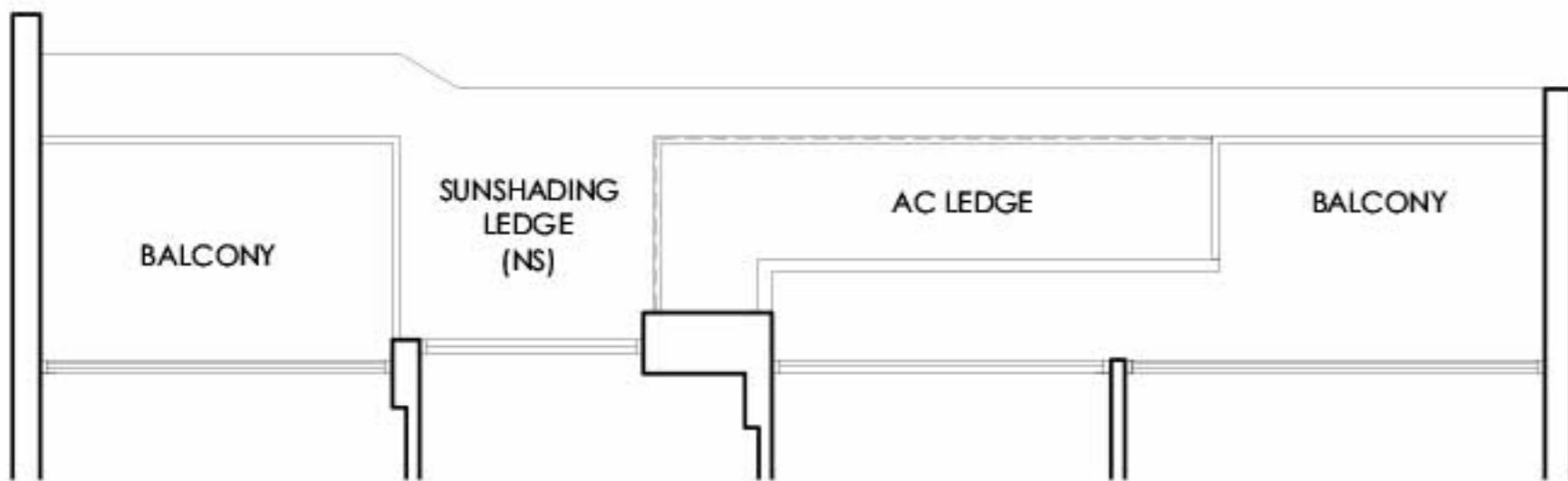
3 BEDROOM + STUDY
 TYPE C1-1P 1st Storey
 Area 99 sq m / 1,066 sq ft
 1 unit

#01-02



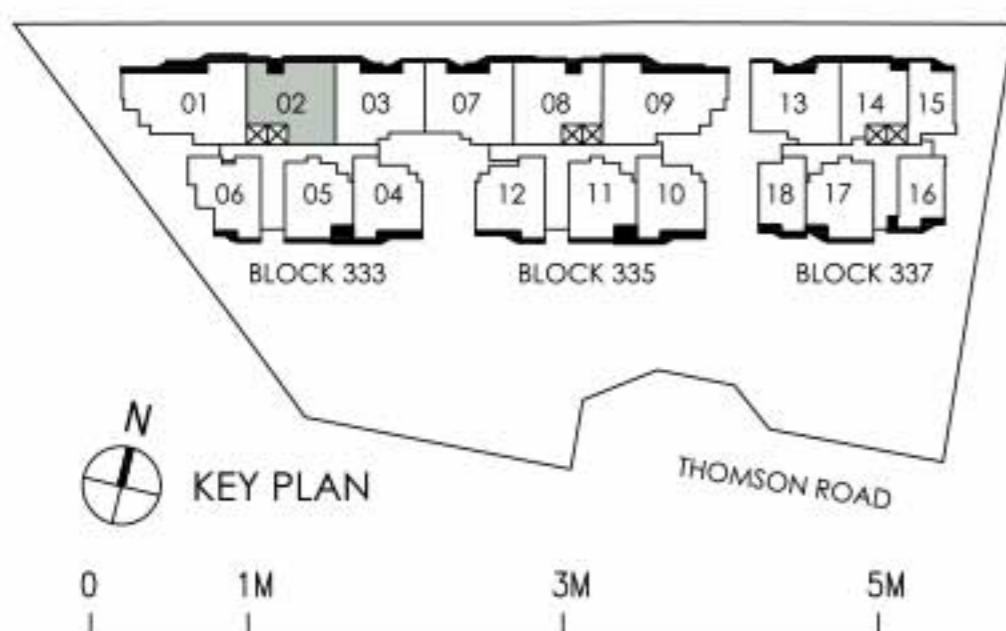
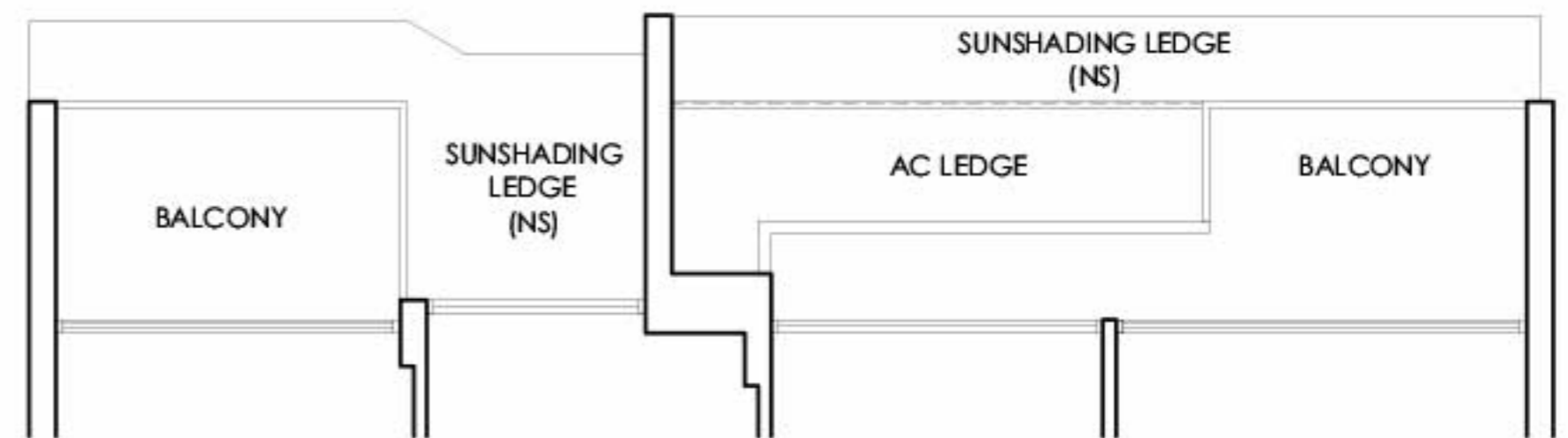
3 BEDROOM + STUDY
 TYPE C1-1 2nd & 4th Storey
 Area 99 sq m / 1,066 sq ft
 2 units

#02-02 and #04-02



3 BEDROOM + STUDY
 TYPE C1-1 3rd & 5th Storey
 Area 99 sq m / 1,066 sq ft
 2 units

#03-02 and #05-02



LEGEND
 DB : Distribution Board
 W/D : Washer-Dryer
 WC : Water Closet
 AC LEDGE : Air Conditioner Ledge
 NS : Non-strata Area
 F : Fridge
 PES : Private Enclosed Space

The total area includes AC ledge, balcony and private enclosed space (where applicable). The above plans and illustrations are subject to changes as required by relevant authorities. Areas are estimated and are subject to final survey by registered surveyor. The balcony cannot be enclosed unless with approved screen, as illustrated in diagram annexed hereto as 'Annexure 1'.

TYPE C1-2

3 BEDROOM + STUDY
 TYPE C1-2P 1st Storey
 Area 99 sq m / 1,066 sq ft
 1 unit

#01-08

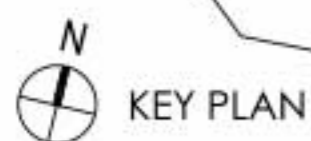
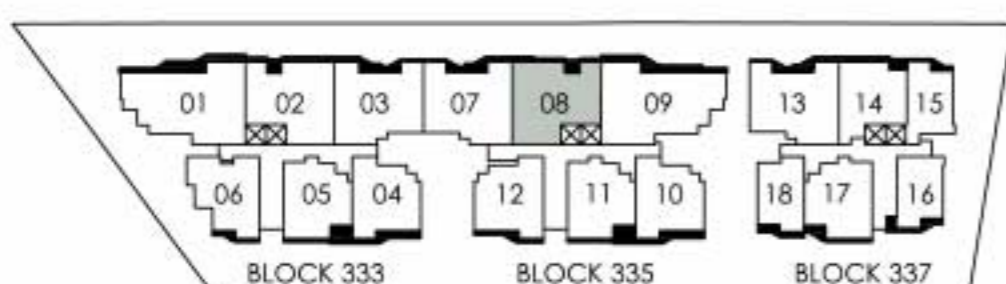
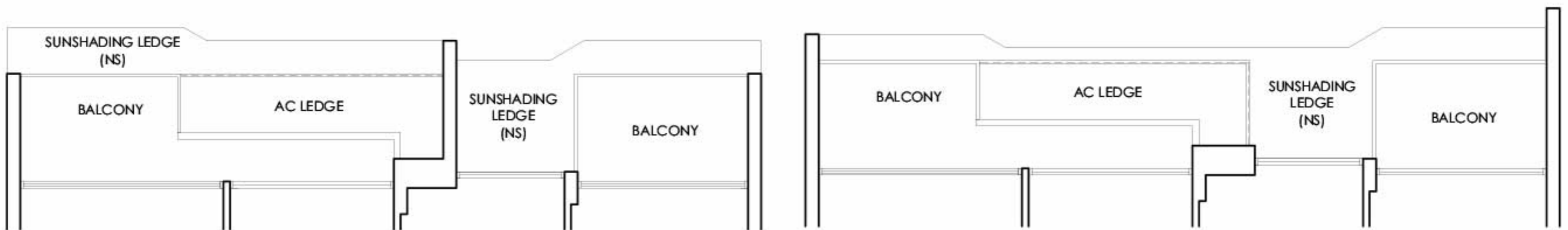


3 BEDROOM + STUDY
 TYPE C1-2 2nd & 4th Storey
 Area 99 sq m / 1,066 sq ft
 2 units

#02-08 and #04-08

3 BEDROOM + STUDY
 TYPE C1-2 3rd & 5th Storey
 Area 99 sq m / 1,066 sq ft
 2 units

#03-08 and #05-08



0 1M 3M 5M

LEGEND

- DB : Distribution Board
- W/D : Washer-Dryer
- WC : Water Closet
- AC LEDGE : Air Conditioner Ledge
- NS : Non-strata Area
- F : Fridge
- PES : Private Enclosed Space

The total area includes AC ledge, balcony and private enclosed space (where applicable). The above plans and illustrations are subject to changes as required by relevant authorities. Areas are estimated and are subject to final survey by registered surveyor. The balcony cannot be enclosed unless with approved screen, as illustrated in diagram annexed hereto as 'Annexure 1'.

TYPE C2 - 1

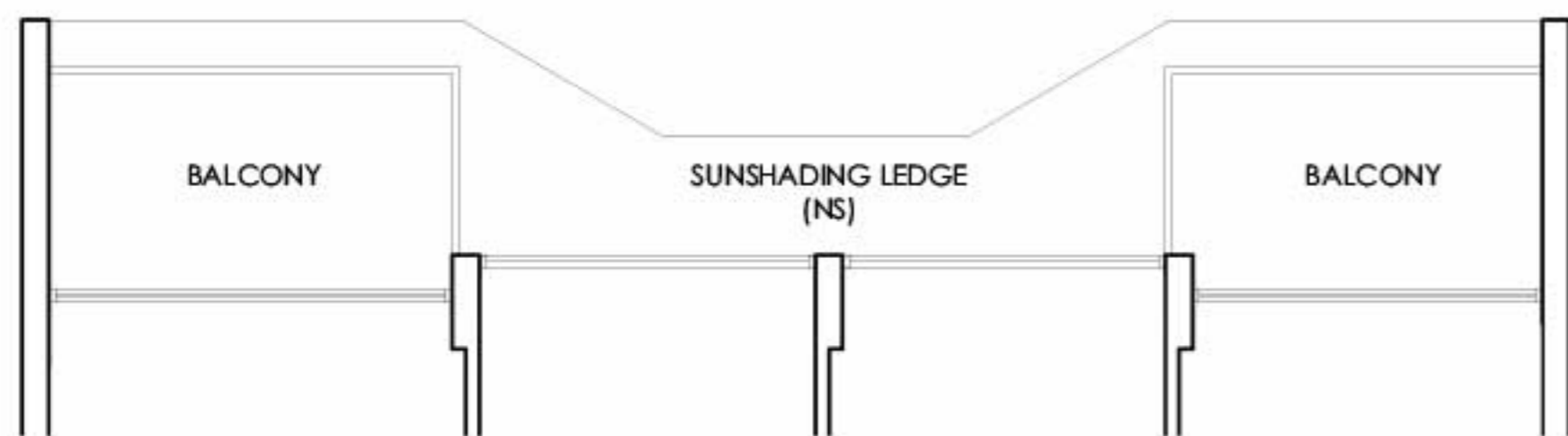
3 BEDROOM
 TYPE C2-1P 1st Storey
 Area 101 sq m / 1,088 sq ft
 1 unit

#01-03



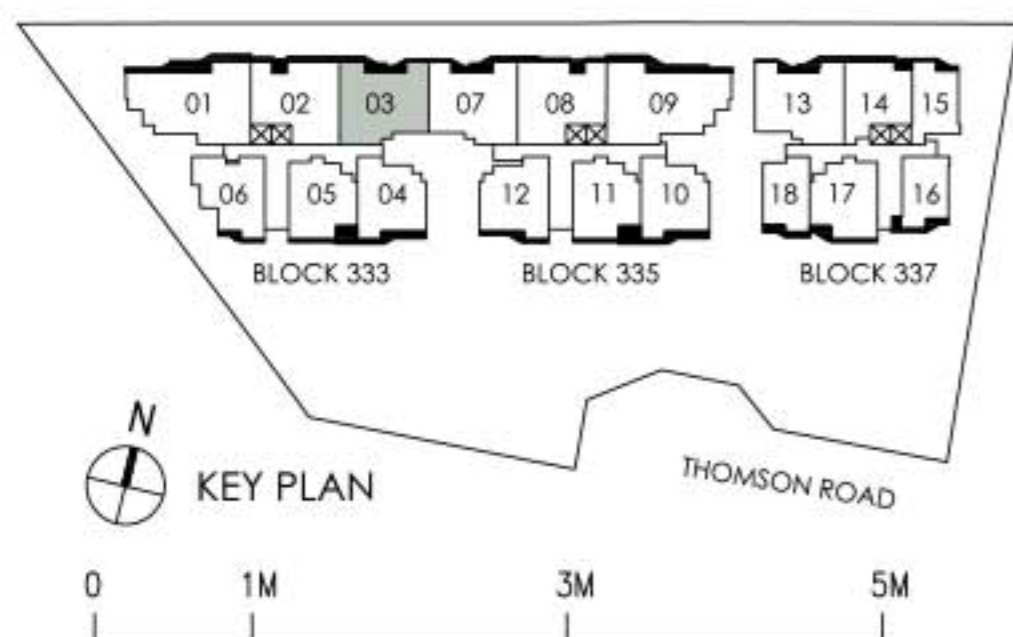
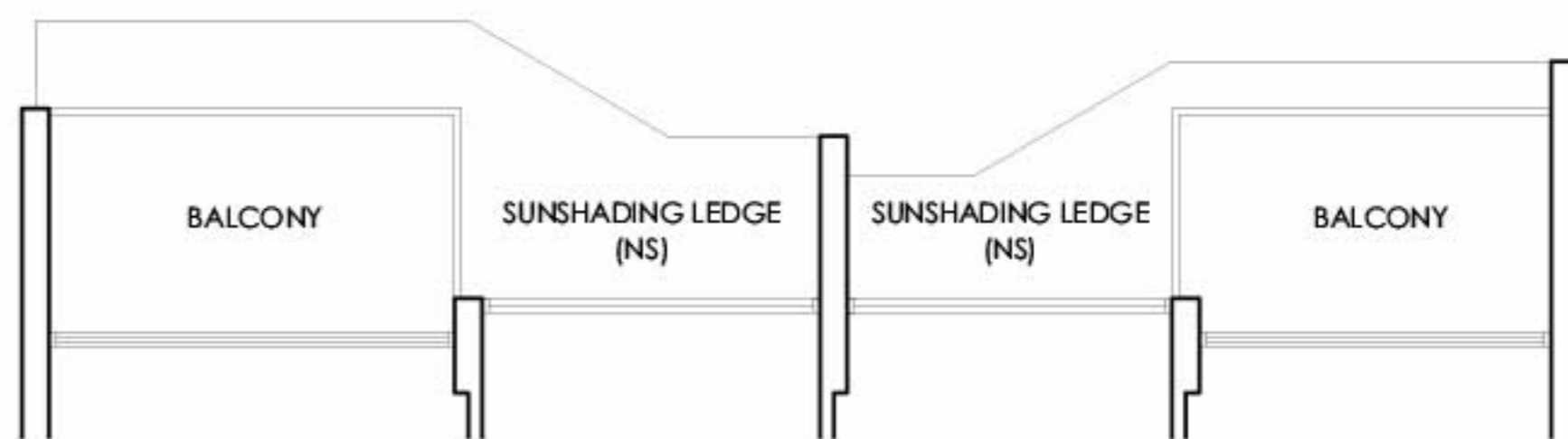
3 BEDROOM
 TYPE C2-1 2nd & 4th Storey
 Area 101 sq m / 1,088 sq ft
 2 units

#02-03 and #04-03



3 BEDROOM
 TYPE C2-1 3rd & 5th Storey
 Area 101 sq m / 1,088 sq ft
 2 units

#03-03 and #05-03



LEGEND
 DB : Distribution Board
 W/D : Washer-Dryer
 WC : Water Closet
 AC LEDGE : Air Conditioner Ledge
 NS : Non-strata Area
 F : Fridge
 PES : Private Enclosed Space

The total area includes AC ledge, balcony and private enclosed space (where applicable). The above plans and illustrations are subject to changes as required by relevant authorities. Areas are estimated and are subject to final survey by registered surveyor. The balcony cannot be enclosed unless with approved screen, as illustrated in diagram annexed hereto as 'Annexure 1'.

TYPE C2 - 2

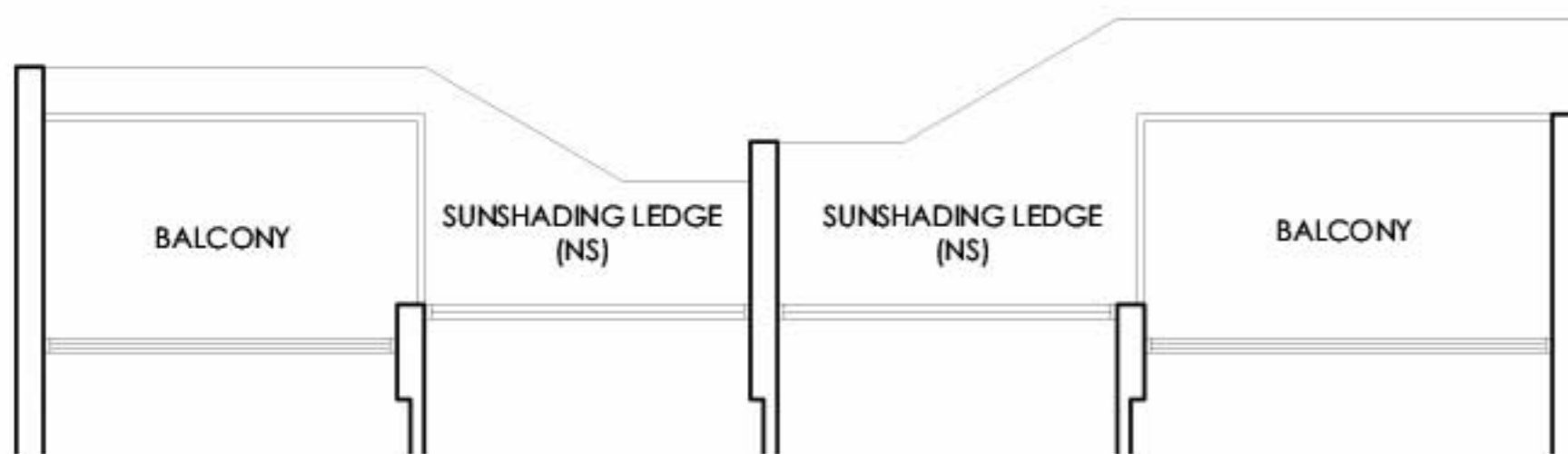
3 BEDROOM + STUDY
 TYPE C2-2P 1st Storey
 Area 101 sq m / 1,088 sq ft
 1 unit

#01-07



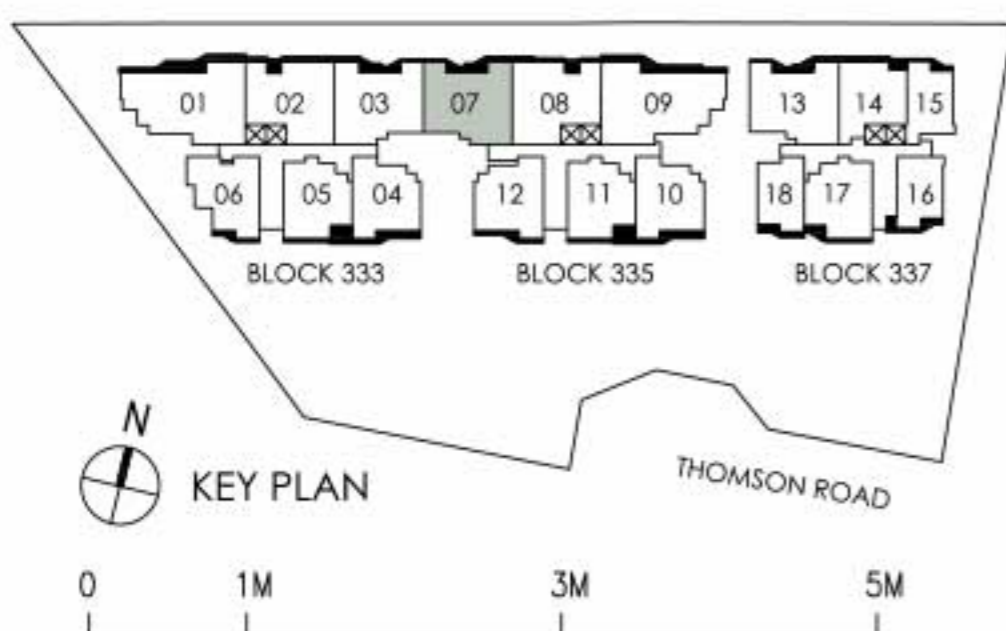
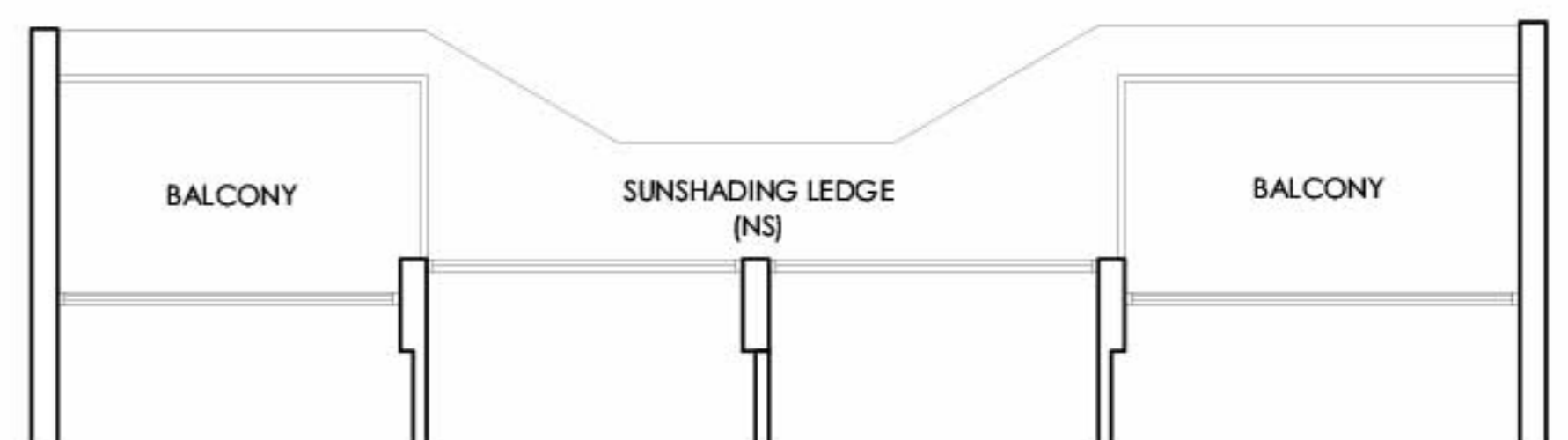
3 BEDROOM + STUDY
 TYPE C2-2 2nd & 4th Storey
 Area 101 sq m / 1,088 sq ft
 2 units

#02-07 and #04-07



3 BEDROOM + STUDY
 TYPE C2-2 3rd & 5th Storey
 Area 101 sq m / 1,088 sq ft
 2 units

#03-07 and #05-07



LEGEND
 DB : Distribution Board
 W/D : Washer-Dryer
 WC : Water Closet
 AC LEDGE : Air Conditioner Ledge
 NS : Non-strata Area
 F : Fridge
 PES : Private Enclosed Space

The total area includes AC ledge, balcony and private enclosed space (where applicable). The above plans and illustrations are subject to changes as required by relevant authorities. Areas are estimated and are subject to final survey by registered surveyor. The balcony cannot be enclosed unless with approved screen, as illustrated in diagram annexed hereto as 'Annexure 1'.

TYPE C2A

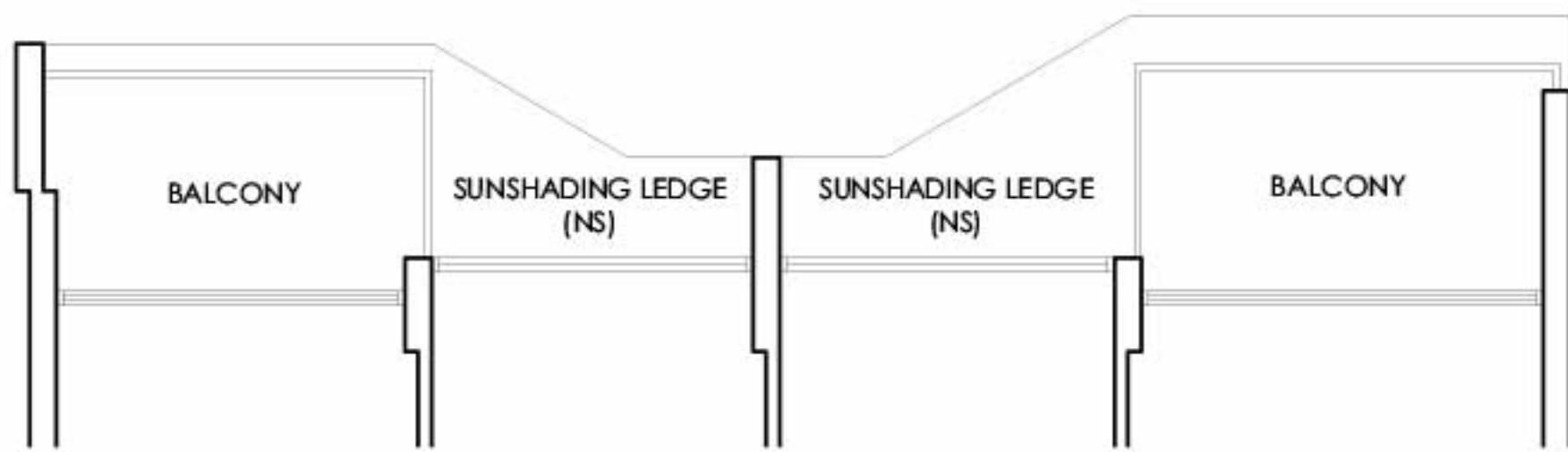
3 BEDROOM + STUDY
 TYPE C2AP 1st Storey
 Area 101 sq m / 1,088 sq ft
 1 unit

#01-13



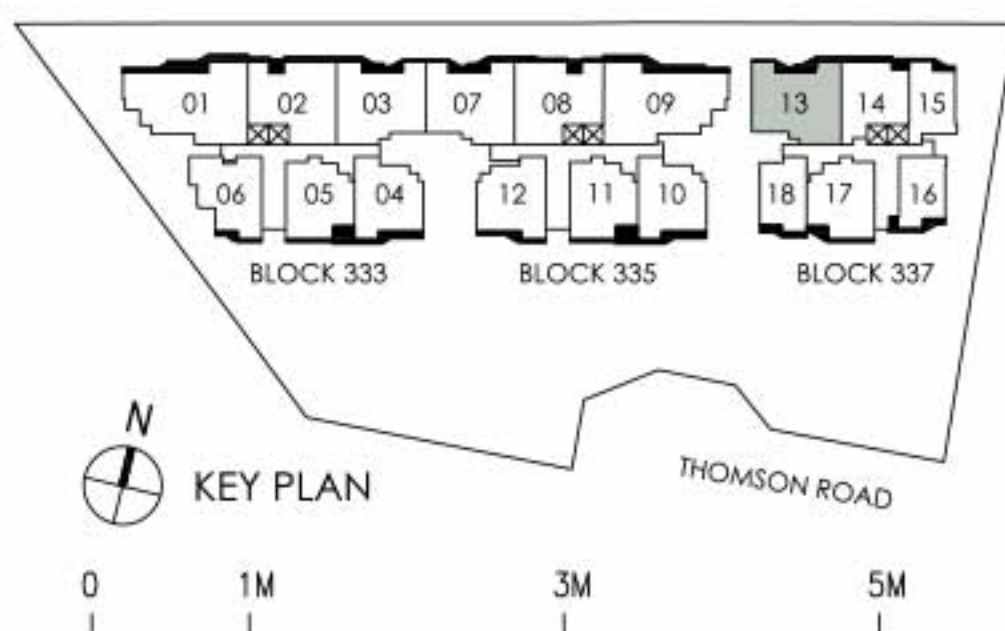
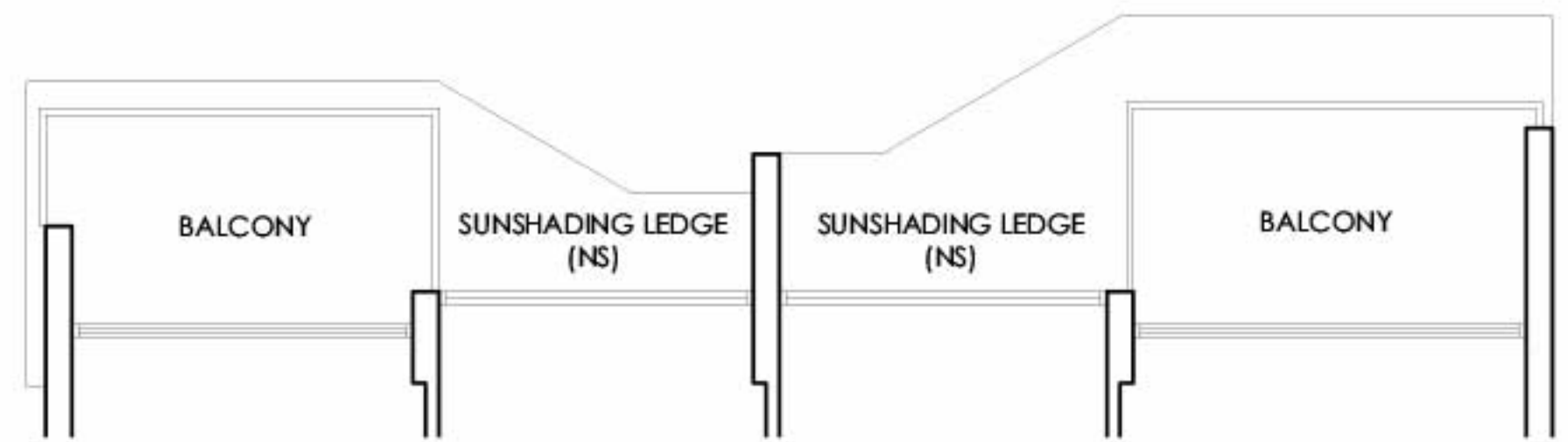
3 BEDROOM + STUDY
 TYPE C2A 2nd & 4th Storey
 Area 101 sq m / 1,088 sq ft
 2 units

#02-13 and #04-13



3 BEDROOM + STUDY
 TYPE C2A 3rd & 5th Storey
 Area 101 sq m / 1,088 sq ft
 2 units

#03-13 and #05-13



LEGEND
 DB : Distribution Board
 W/D : Washer-Dryer
 WC : Water Closet
 AC LEDGE : Air Conditioner Ledge
 NS : Non-strata Area
 F : Fridge
 PES : Private Enclosed Space

The total area includes AC ledge, balcony and private enclosed space (where applicable). The above plans and illustrations are subject to changes as required by relevant authorities. Areas are estimated and are subject to final survey by registered surveyor. The balcony cannot be enclosed unless with approved screen, as illustrated in diagram annexed hereto as 'Annexure 1'.

TYPE D1-1

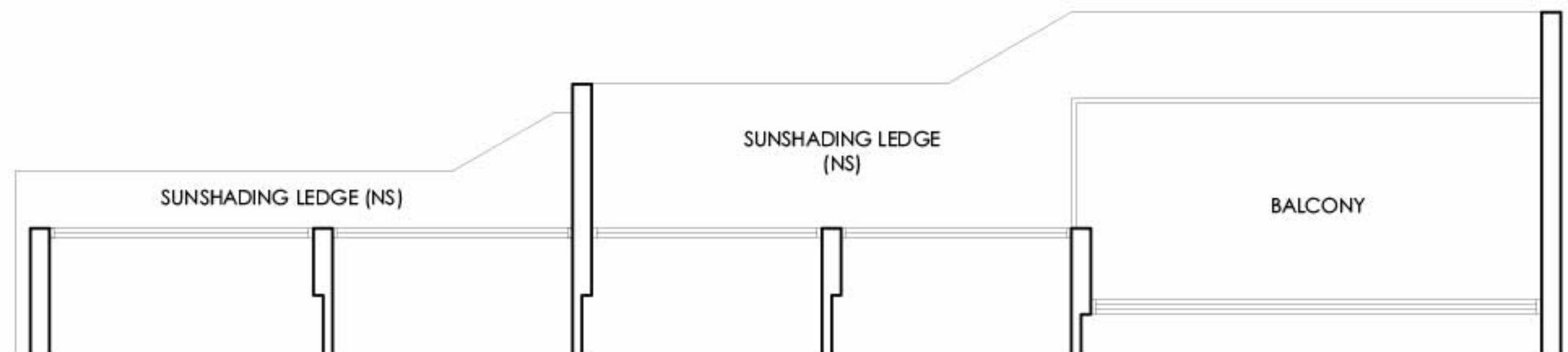
4 BEDROOM + STUDY
TYPE D1-1P 1st Storey
Area 129 sq m / 1,389 sq ft
1 unit

#01-01



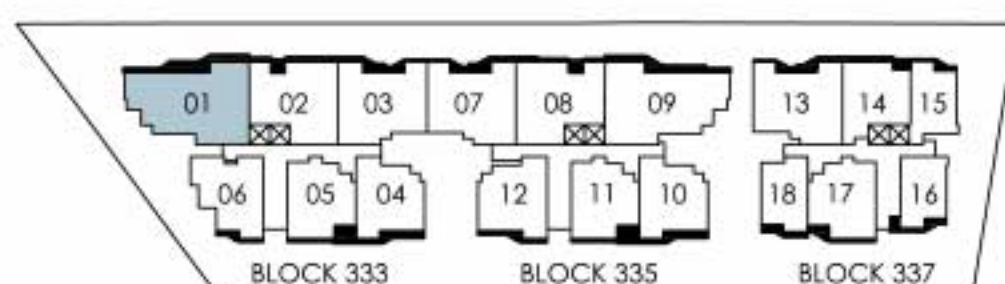
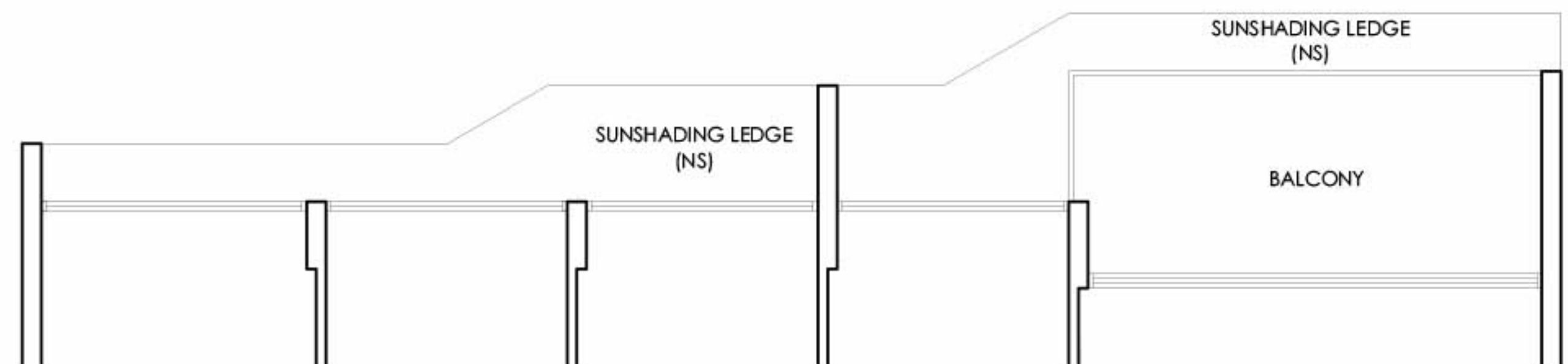
4 BEDROOM + STUDY
TYPE D1-1 2nd & 4th Storey
Area 129 sq m / 1,389 sq ft
2 units

#02-01 and #04-01



4 BEDROOM + STUDY
TYPE D1-1 3rd & 5th Storey
Area 129 sq m / 1,389 sq ft
2 units

#03-01 and #05-01



N
KEY PLAN

0 1M 3M 5M
THOMSON ROAD

LEGEND

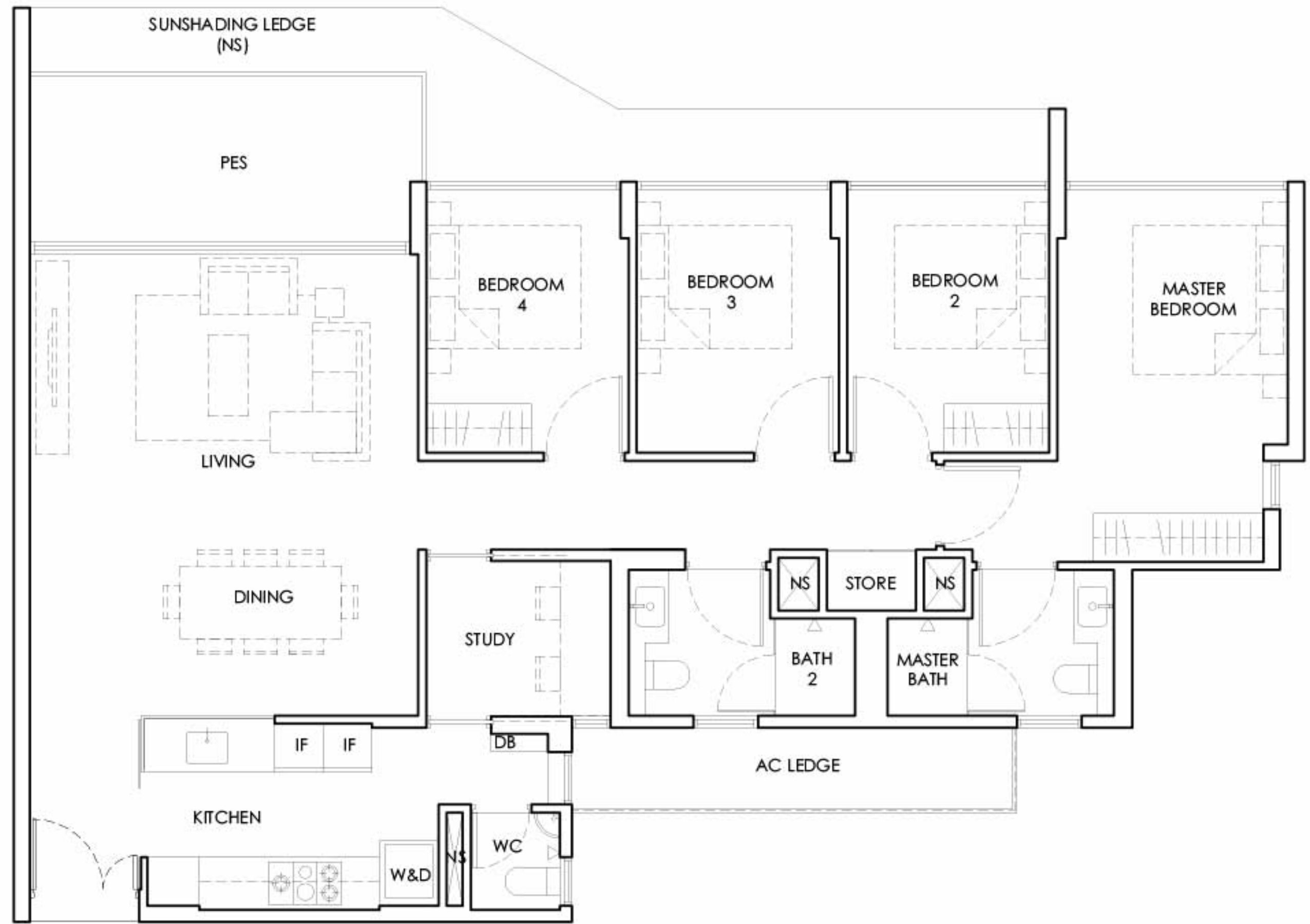
DB : Distribution Board	AC LEDGE : Air Conditioner Ledge	IF : Integrated Fridge
W : Washing Machine	D : Dryer	NS : Non-strata Area
PES : Private Enclosed Space	WC : Water Closet	

The total area includes AC ledge, balcony and private enclosed space (where applicable). The above plans and illustrations are subject to changes as required by relevant authorities. Areas are estimated and are subject to final survey by registered surveyor. The balcony cannot be enclosed unless with approved screen, as illustrated in diagram annexed hereto as 'Annexure 1'.

TYPE D1-2

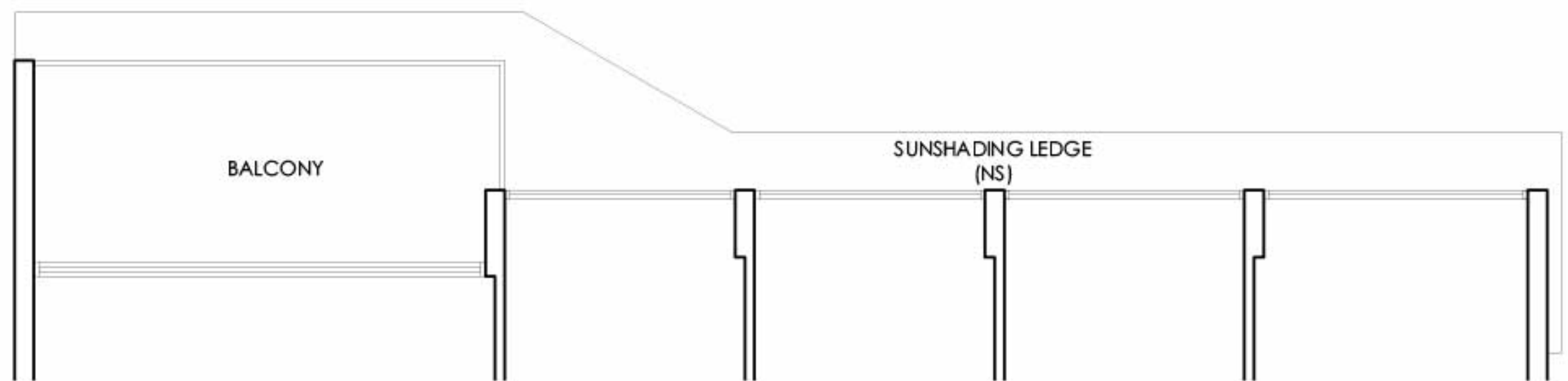
4 BEDROOM + STUDY
TYPE D1-2P 1st Storey
Area 129 sq m / 1,389 sq ft
1 unit

#01-09



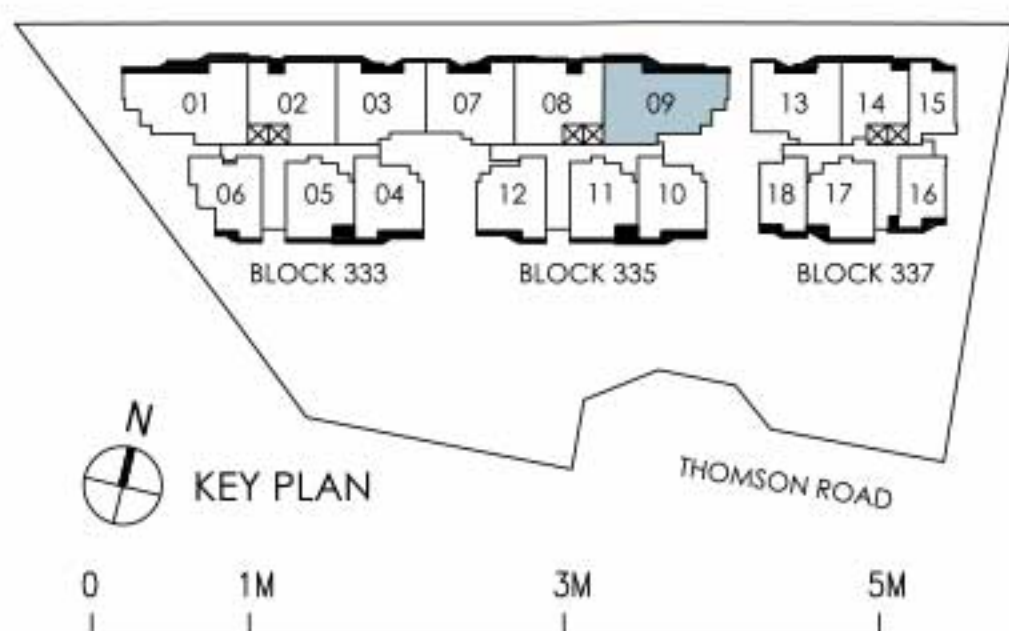
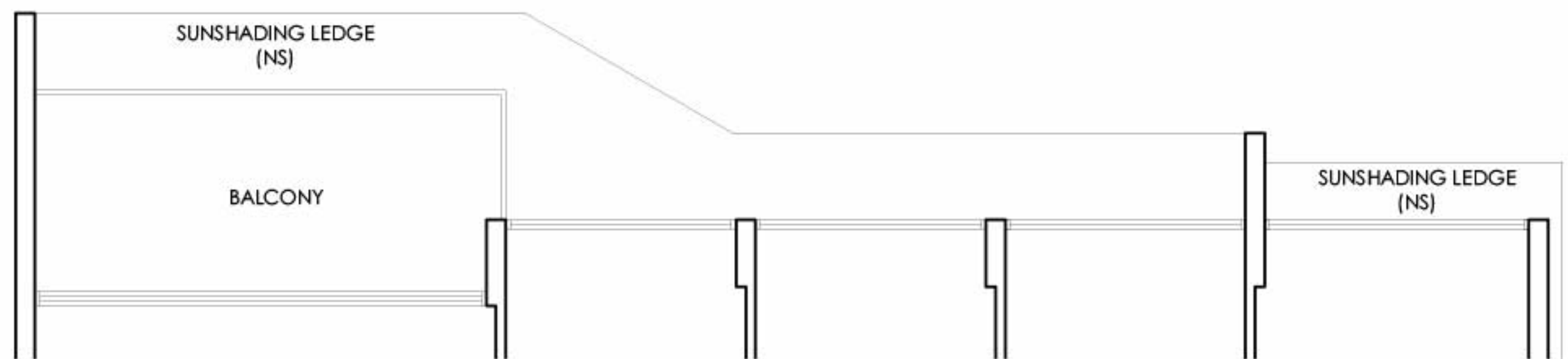
4 BEDROOM + STUDY
TYPE D1-2 2nd & 4th Storey
Area 129 sq m / 1,389 sq ft
2 units

#02-09 and #04-09



4 BEDROOM + STUDY
TYPE D1-2 3rd & 5th Storey
Area 129 sq m / 1,389 sq ft
2 units

#03-09 and #05-09



LEGEND

DB : Distribution Board	AC LEDGE : Air Conditioner Ledge	IF : Integrated Fridge
W : Washing Machine	D : Dryer	NS : Non-strata Area
PES : Private Enclosed Space	WC : Water Closet	

The total area includes AC ledge, balcony and private enclosed space (where applicable). The above plans and illustrations are subject to changes as required by relevant authorities. Areas are estimated and are subject to final survey by registered surveyor. The balcony cannot be enclosed unless with approved screen, as illustrated in diagram annexed hereto as 'Annexure 1'.

S P E C I F I C A T I O N S

1. FOUNDATION

Reinforced concrete and/or steel piles and/or footings and/or raft foundation

2. SUPERSTRUCTURE

Reinforced concrete structure and/or steel structure

3. WALLS

a. External Wall

Reinforced concrete and/or lightweight concrete panels and/or precast reinforced concrete wall and/or with textured coating, and/or cladding to selected walls

b. Internal Wall

Reinforced concrete and/or lightweight concrete panels and/or precast reinforced concrete wall and/or dry wall partition

4. ROOF

Flat roof:

Reinforced concrete structure and/or metal roof with appropriate insulation and waterproofing system

5. CEILING

a. Floor to Ceiling Height

Areas	Ceiling Heights (m)
Living Room	3.2
Dining Room	3.2 / 2.7
Master Bedroom	3.2
Master Bedroom (Type B1)	2.9
Bedroom 1 / 2 / 3 / Study	3.2
Bedroom 2 / Study (Type B4)	2.9
Bedroom 2 / 3 (Type C1)	2.9
Kitchen / Hallway	2.7
Bath 1 (Master) / Bath 2	2.5 (measured from vanity finished floor level)
WC (Type C1, C2, D1)	2.5
PES / Balcony	2.9 (measured from PES / Balcony finished floor level)

b. Apartment

(i) Kitchen

Skim coat plaster with emulsion paint and/or part moisture resistant ceiling board (including ceiling box-ups) with emulsion paint

(ii) Bathrooms

Skim coat plaster with emulsion paint and/or part moisture resistant ceiling board (including ceiling box-ups) with emulsion paint

(iii) Living, Dining, Bedroom, Study and Hallway

Skim coat plaster with emulsion paint and/or part fibrous plasterboard (including ceiling box-ups) with emulsion paint

(iv) Balcony and Private Enclosed Space (PES)

Aluminum-cladded panel ceiling

(v) Utility

Skim coat plaster with emulsion paint

c. Common Area

(i) Gymnasium, Clubhouse, Management Office, Guardhouse

Skim coat plaster with emulsion paint and/or part fibrous plasterboard with emulsion paint

(ii) Lift Lobbies, Basement Drop-off/Waiting Areas, Letterbox

Areas, Toilets, Changing Room, Corridors to Units
Skim coat plaster with emulsion paint and/or part moisture resistant ceiling board with emulsion paint

(iii) Basement Car Park, Staircases

Skim coat plaster with emulsion paint

6. FINISHES

a. Walls (For Apartments)

(i) Living/Dining, all Bedrooms, Study, Utility, Hallway

Cement/sand plaster with emulsion paint and/or skim coat with emulsion paint

(ii) Bath 1 (Master), Bath 2

Natural Marble and/or stone and/or porcelain tiles to designated exposed surface below the false ceiling

(iii) WC

Tiles to designated exposed surface below the false ceiling

(iv) Kitchen

Cement/sand plaster with emulsion paint to designated exposed surface below the false ceiling

(v) Balcony and Private Enclosed Space (PES)

Aluminum-cladded wall paneling and/or cement/sand plaster with emulsion paint and/or skim coat with emulsion paint

b. Walls (Common Areas)

(i) Basement Lift Lobbies, Basement Drop-off/Waiting Areas, Letterbox Areas

Natural stone and/or tiles and/or cement/sand plaster with emulsion paint

(ii) Lift Lobbies, Corridors to Units, Gymnasium, Clubhouse

Tiles and/or cement/sand plaster with emulsion paint

(iii) All External Wall Finishes

Glass-cladded wall paneling and/or aluminum-cladded wall paneling and/or cement/sand plaster with emulsion paint and/or skim coat with emulsion paint

- (iv) Management Office, Guardhouse, Basement Car Park, Staircases
Cement/sand plaster with emulsion paint and/or skim coat with emulsion paint
- c. Floor (For Apartments)
 - (i) Living/Dining, Kitchen, Study, Utility, Hallway
Natural marble and/or stone, with skirting
 - (ii) All Bedrooms
Solid timber strip flooring with skirting
 - (iii) Bath 1 (Master), Bath 2
Natural marble and/or stone and/or porcelain tiles
 - (iv) WC, Private Enclosed Space, Balcony
Tiles
- d. Floor (Common Areas)
 - (i) Basement Lift Lobbies, Basement Drop-off/Waiting Areas, Letterbox Areas, Clubhouse
Natural stone and/or tiles
 - (ii) Typical Floor Lift Lobbies
Tiles
 - (iii) Staircases
Tiles and/or cement/sand screed with non-slip nosing tiles
 - (iv) Basement Car Park and Driveways
Reinforced concrete floor and cement/sand screed floor with hardener to applicable areas
- (vi) Kitchen (Type C2 [except C2-1], D1)
Glass sliding door
- (vii) Kitchen (Type C2-1)
Glass sliding door
Timber sliding door with louvres
- (viii) Balcony and Private Enclosed Space (PES)
Powder coated aluminum framed glass sliding door with laminated glass
- b. Common Areas
 - (i) Storey Shelter Door
Steel Blast Doors
- c. General
 - (i) All glazing to doors shall be minimum 6mm thick tinted and/ or clear and/or reflective and/or frosted glass
 - (ii) Good quality locksets and ironmongery

7. WINDOWS

All windows of the apartment shall be powder coated aluminum framed glass sliding and/or casement and/or fixed windows with min. 6mm thick clear and/or tinted and/or acid-etched and/or sandblasted and/or opaque glass (where applicable)

8. DOORS

- a. Apartments
 - (i) Main Entrance
Fire-rated solid core timber door
 - (ii) Bedrooms, Bathrooms
Solid core timber doors
 - (iii) Study (Type C1, C2 [except C2-1], D1)
Timber sliding or sliding-folding door and/or with louvres
 - (iv) Bath 1 (Master) and Bath 2
Shower glass swing door with fixed glass panel
 - (v) WC (Type C1, C2, D1)
Powder coated aluminum framed swing door with glass panel

9. SANITARY FITTINGS

- a. Master Bathroom
 - (i) 1 shower mixer with rain shower (Hansgrohe)
 - (ii) 1 basin (Duravit) with quartz vanity countertop and faucet (Hansgrohe)
 - (iii) 1 wall hung water closet with electronic bidet (Duravit) for Type C1, C2, D1
 - (iv) 1 wall hung water closet (Duravit) for Type A1-A3, B1-B4
 - (v) 1 bidet hand spray for Type A1-A3, B1-B4
 - (vi) 1 towel rail and/or robe hook
 - (vii) 1 toilet paper roll holder
 - (viii) 1 mirror with cabinet
- b. Bathroom 2
 - (i) 1 shower mixer (Hansgrohe)
 - (ii) 1 basin (Duravit) with quartz vanity countertop and faucet (Hansgrohe)
 - (iii) 1 wall hung water closet (Duravit)
 - (iv) 1 bidet hand spray
 - (v) 1 towel rail and/or robe hook
 - (vi) 1 toilet paper roll holder
 - (vii) 1 mirror with cabinet