

1 BEDROOM

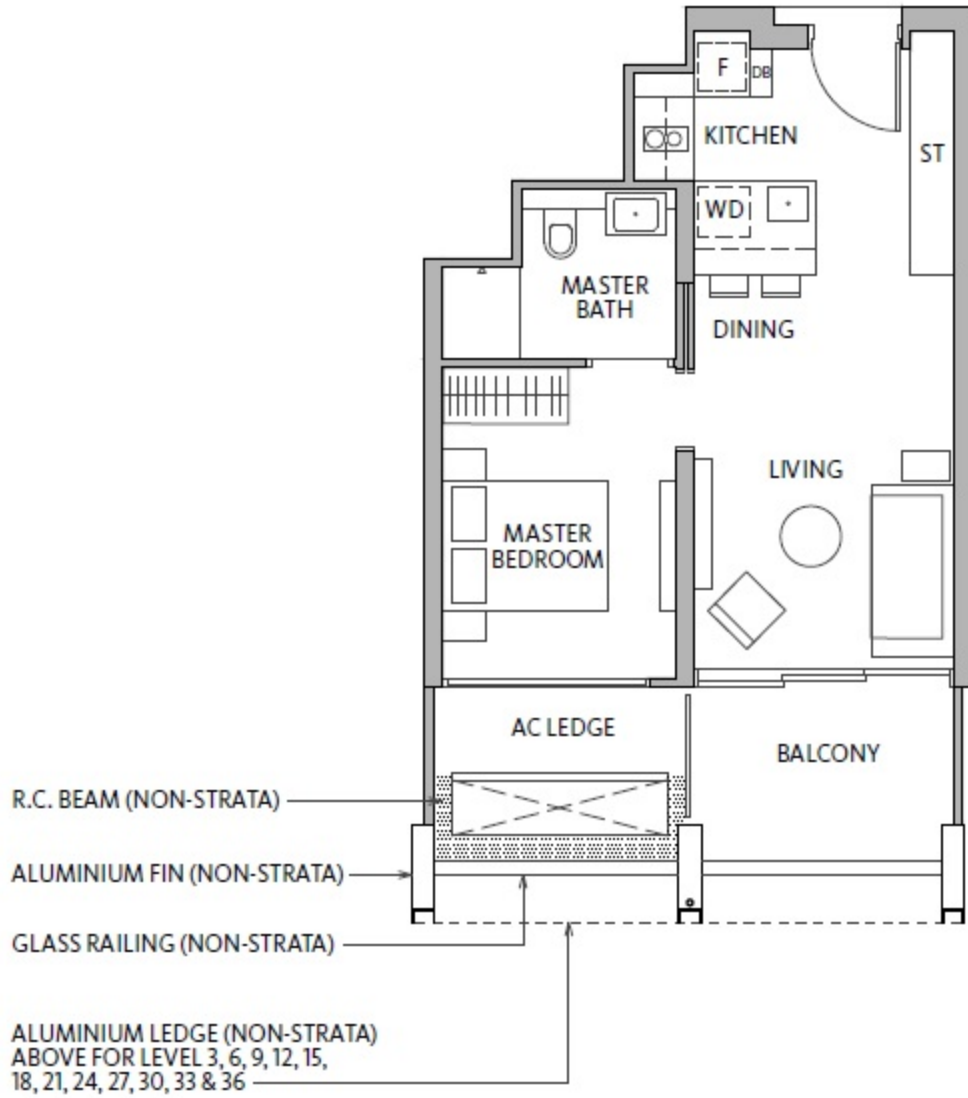
52 sqm / 560 sqft

TYPE A1-1

#02-09 to #35-09

TYPE A1-1(h)

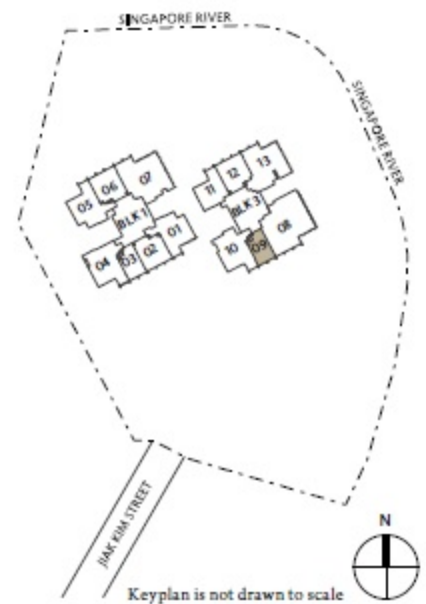
#36-09 (High Ceiling)



LEGEND:

- DB – Distribution Board
- WD – Washer cum Dryer
- ST – Storage
- F – Fridge
- AC Ledge – Air Conditioner Ledge
- R.C. Beam – Reinforced Concrete Beam
- Wall not allowed to be hacked or altered (including by way of drilling) (Refer to the clause pertaining to PPVC in the S&P documents)
- Void Space (Non-strata)
- Rainwater Downpipe Shaft Space

Area includes air conditioner (A/C) ledge, balcony and strata void area where applicable. The above plans are subject to change as may be approved by the relevant authorities. All floor plans are approximate measurements only and are subject to government re-survey. The balcony shall not be enclosed unless with the approved balcony screen. The installation and cost of the screen shall be borne by the purchaser. For an illustration of the approved balcony screen, please refer to the diagram annexed hereto as 'Annexure A'.



1 BEDROOM

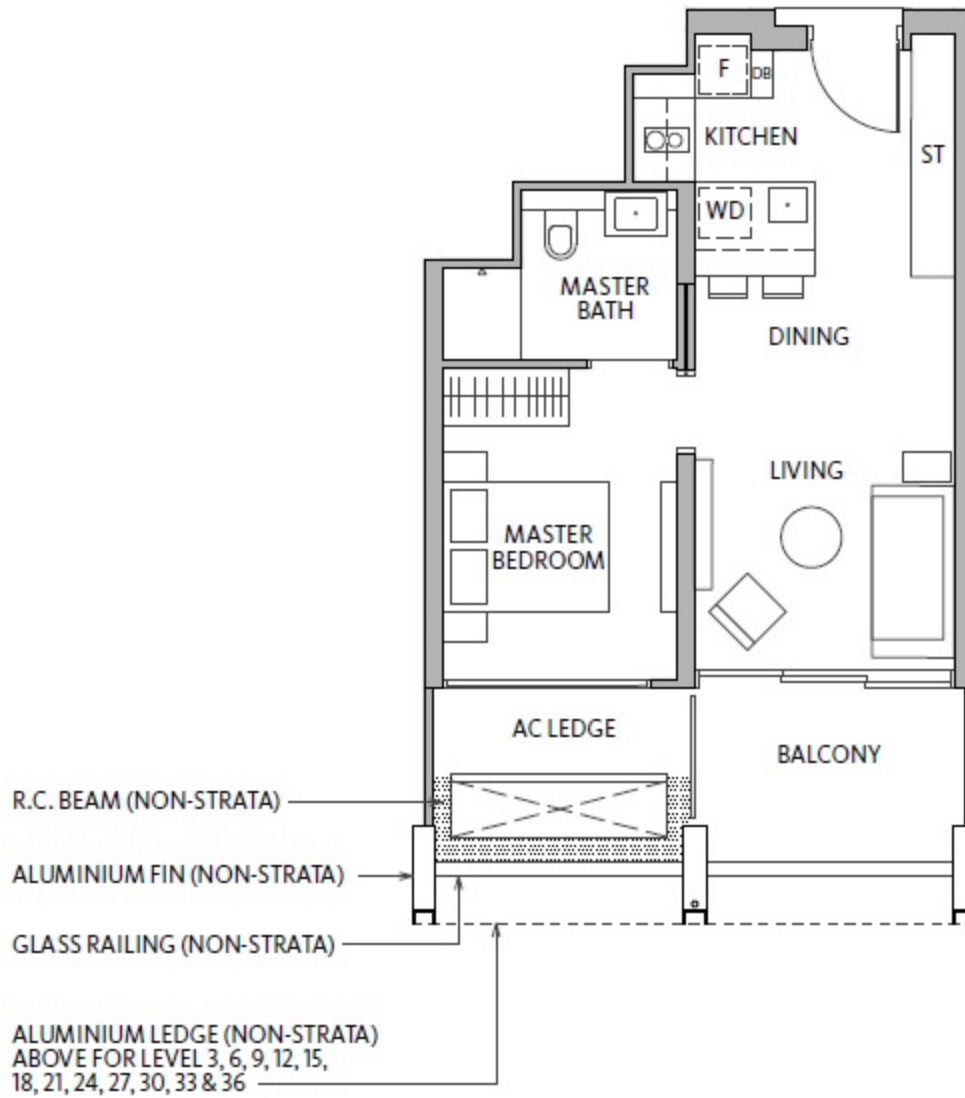
52 sqm / 560 sqft

TYPE A1-2

#02-03 to #35-03

TYPE A1-2(h)

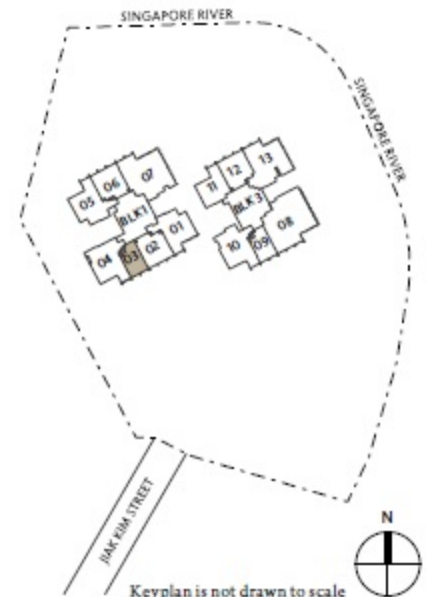
#36-03 (High Ceiling)



LEGEND:

- DB – Distribution Board
- WD – Washer cum Dryer
- ST – Storage
- F – Fridge
- AC Ledge – Air Conditioner Ledge
- R.C. Beam – Reinforced Concrete Beam
- Wall not allowed to be hacked or altered (including by way of drilling) (Refer to the clause pertaining to PPVC in the S&P documents)
- Void Space (Non-strata)
- Rainwater Downpipe Shaft Space

Area includes air conditioner (A/C) ledge, balcony and strata void area where applicable. The above plans are subject to change as may be approved by the relevant authorities. All floor plans are approximate measurements only and are subject to government re-survey. The balcony shall not be enclosed unless with the approved balcony screen. The installation and cost of the screen shall be borne by the purchaser. For an illustration of the approved balcony screen, please refer to the diagram annexed hereto as 'Annexure A'.



Keyplan is not drawn to scale

2 BEDROOM

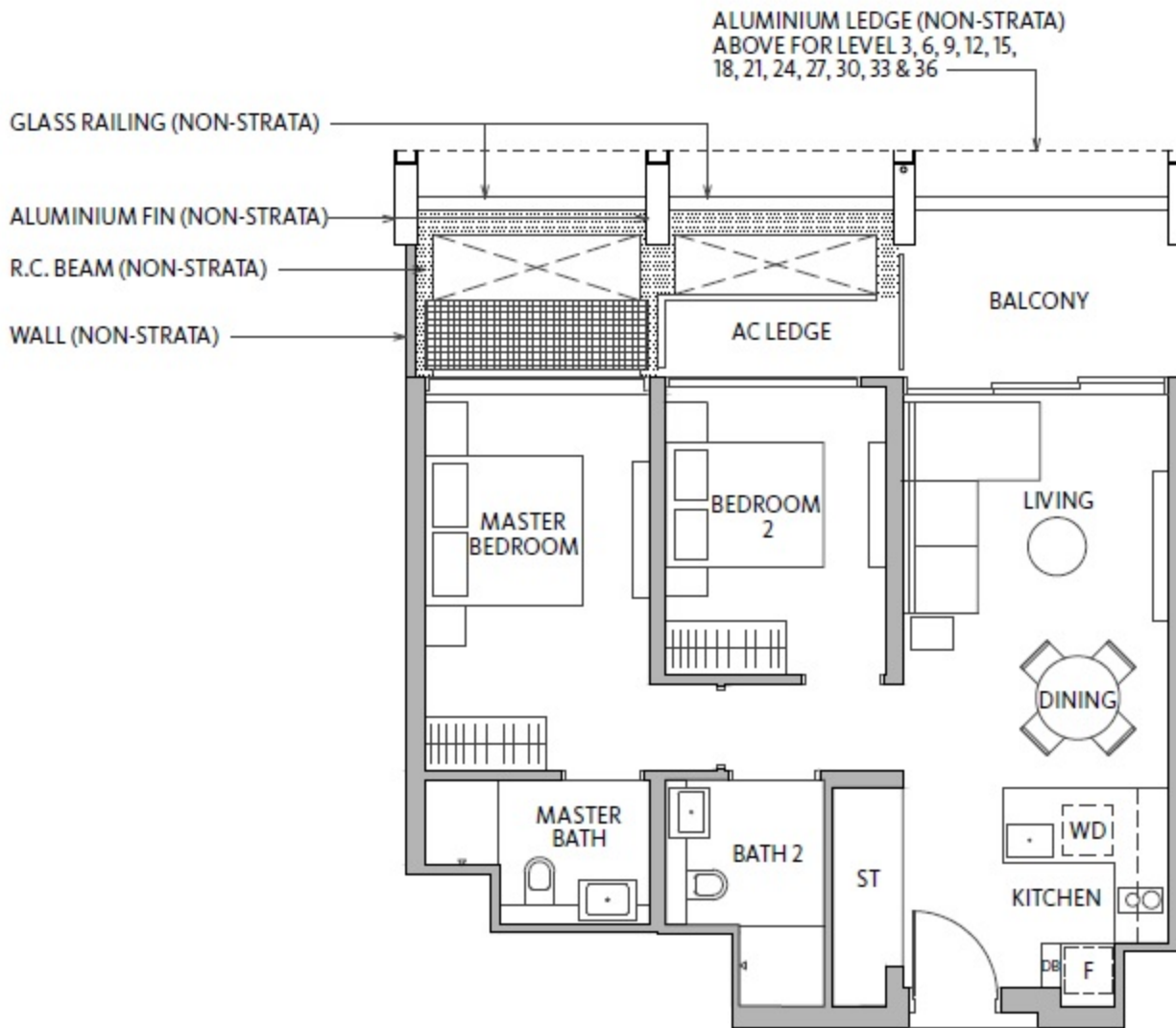
76 sqm / 818 sqft

TYPE B1-1

#02-06 to #35-06

TYPE B1-1(h)

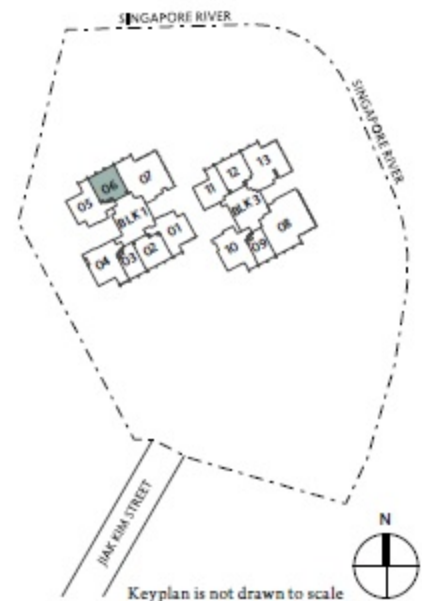
#36-06 (High Ceiling)



LEGEND:

- DB - Distribution Board
- WD - Washer cum Dryer
- ST - Storage
- F - Fridge
- AC Ledge - Air Conditioner Ledge
- R.C. Beam - Reinforced Concrete Beam
- Wall not allowed to be hacked or altered (including by way of drilling) (Refer to the clause pertaining to PPVC in the S&P documents)
- Void Space (Non-strata)
- Rainwater Downpipe Shaft Space
- Maintenance Mesh (Non-strata)

Area includes air conditioner (A/C) ledge, balcony and strata void area where applicable. The above plans are subject to change as may be approved by the relevant authorities. All floor plans are approximate measurements only and are subject to government re-survey. The balcony shall not be enclosed unless with the approved balcony screen. The installation and cost of the screen shall be borne by the purchaser. For an illustration of the approved balcony screen, please refer to the diagram annexed hereto as 'Annexure A'.



2 BEDROOM

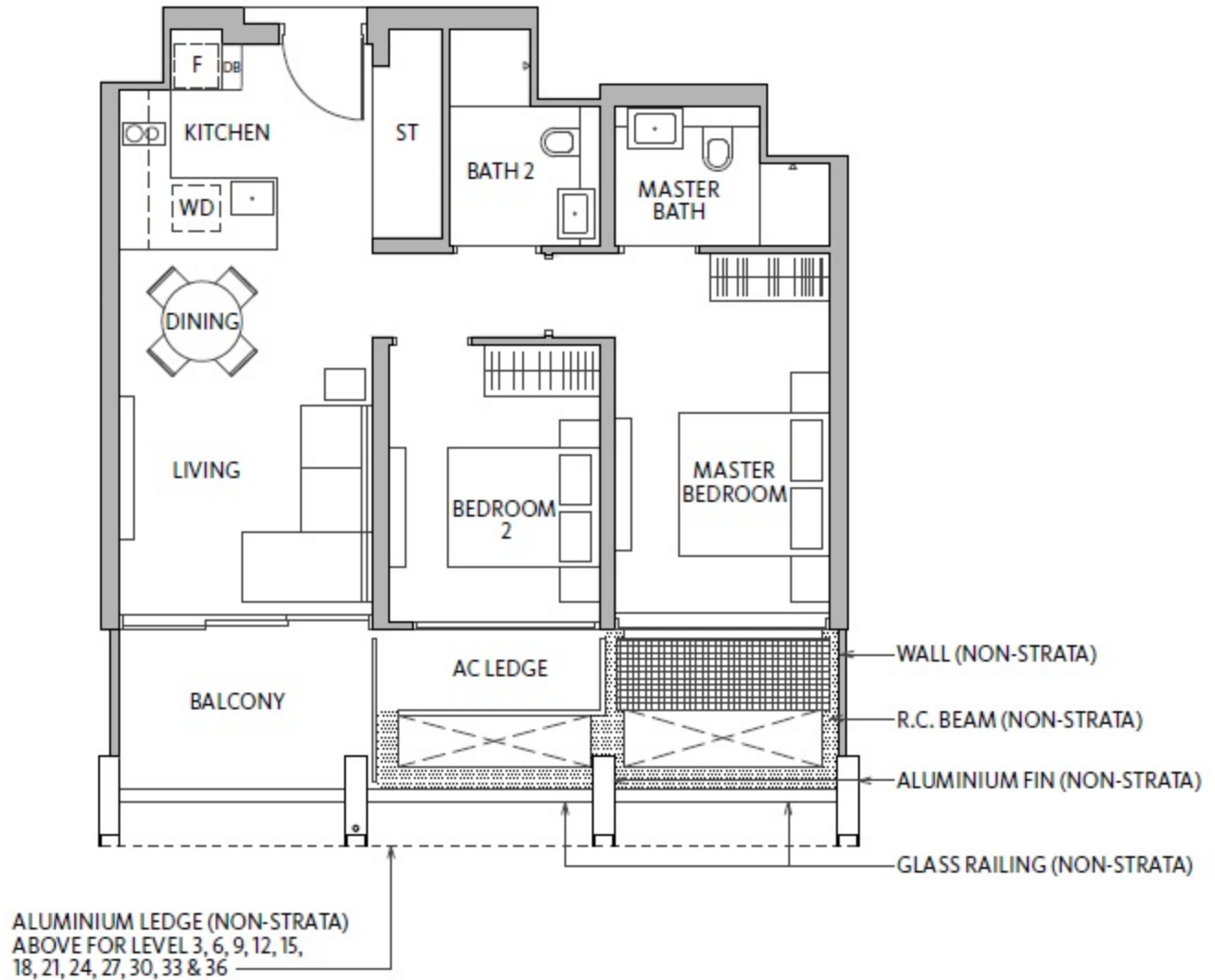
76 sqm / 818 sqft

TYPE B1-2

#02-02 to #35-02

TYPE B1-2(h)

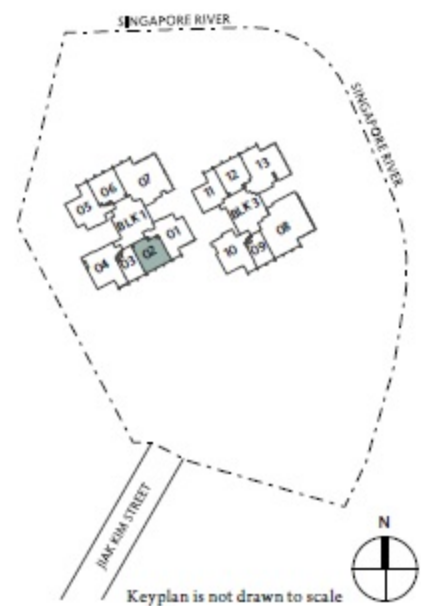
#36-02 (High Ceiling)



LEGEND:

- DB – Distribution Board
- WD – Washer cum Dryer
- ST – Storage
- F – Fridge
- AC Ledge – Air Conditioner Ledge
- R.C. Beam – Reinforced Concrete Beam
- Wall not allowed to be hacked or altered (including by way of drilling) (Refer to the clause pertaining to PPVC in the S&P documents)
- Void Space (Non-strata)
- Rainwater Downpipe Shaft Space
- Maintenance Mesh (Non-strata)

Area includes air conditioner (A/C) ledge, balcony and strata void area where applicable. The above plans are subject to change as may be approved by the relevant authorities. All floor plans are approximate measurements only and are subject to government re-survey. The balcony shall not be enclosed unless with the approved balcony screen. The installation and cost of the screen shall be borne by the purchaser. For an illustration of the approved balcony screen, please refer to the diagram annexed hereto as 'Annexure A'.



2 BEDROOM

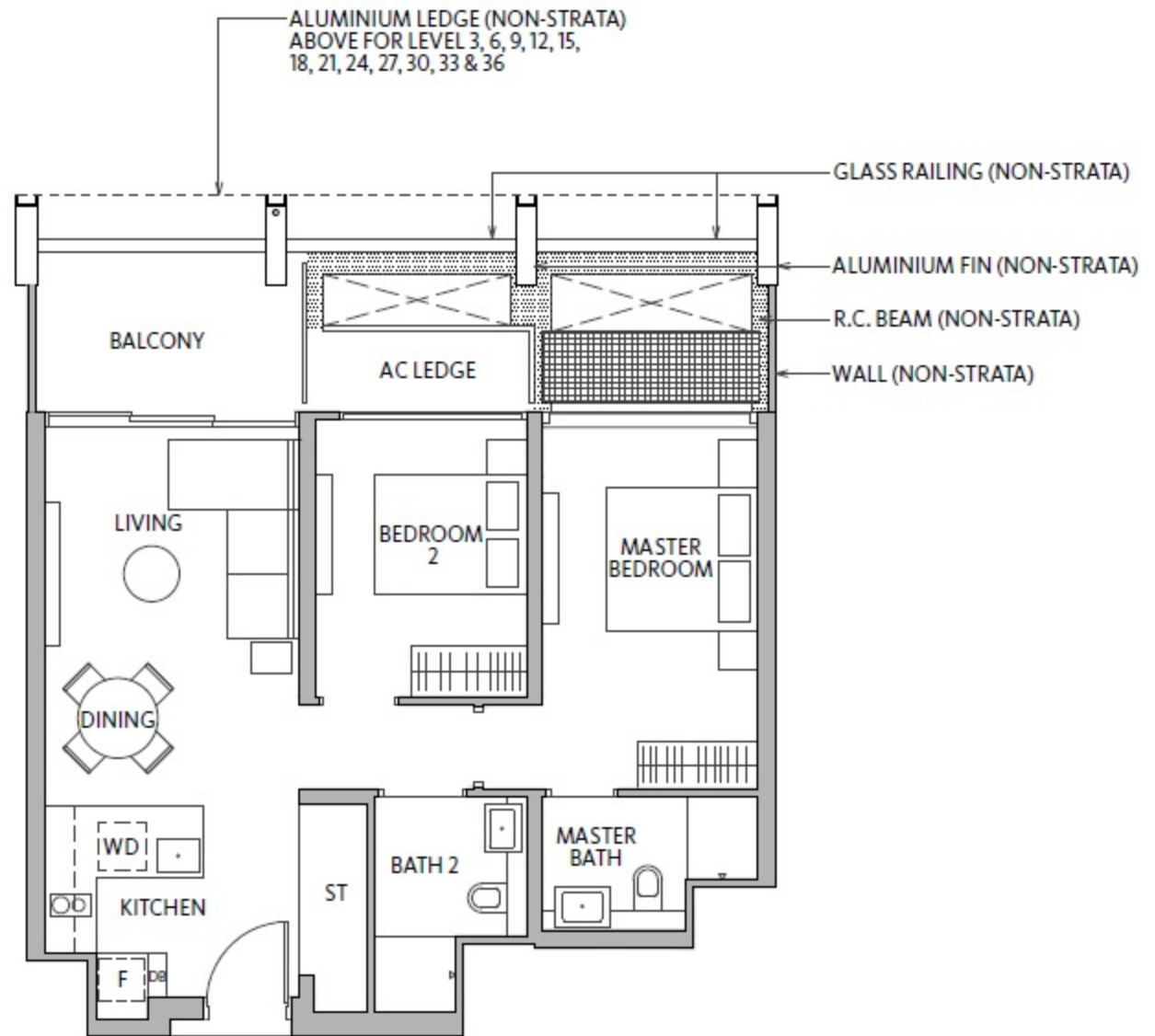
76 sqm / 818 sqft

TYPE B1-3

#02-12 to #35-12

TYPE B1-3(h)

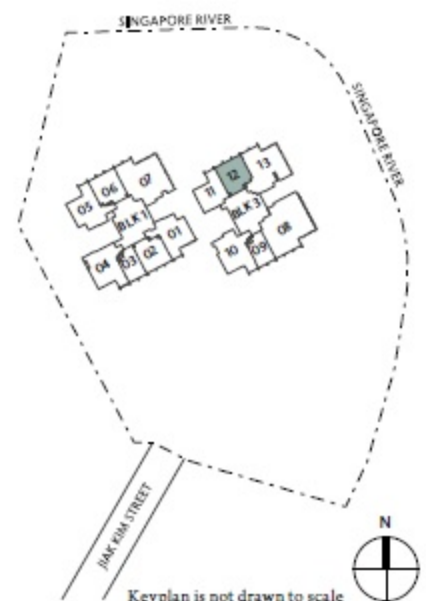
#36-12 (High Ceiling)



LEGEND:

- DB – Distribution Board
- WD – Washer cum Dryer
- ST – Storage
- F – Fridge
- AC Ledge – Air Conditioner Ledge
- R.C. Beam – Reinforced Concrete Beam
- Wall not allowed to be hacked or altered (including by way of drilling) (Refer to the clause pertaining to PPVC in the S&P documents)
- Void Space (Non-strata)
- Rainwater Downpipe Shaft Space
- Maintenance Mesh (Non-strata)

Area includes air conditioner (A/C) ledge, balcony and strata void area where applicable. The above plans are subject to change as may be approved by the relevant authorities. All floor plans are approximate measurements only and are subject to government re-survey. The balcony shall not be enclosed unless with the approved balcony screen. The installation and cost of the screen shall be borne by the purchaser. For an illustration of the approved balcony screen, please refer to the diagram annexed hereto as 'Annexure A'.



3 BEDROOM

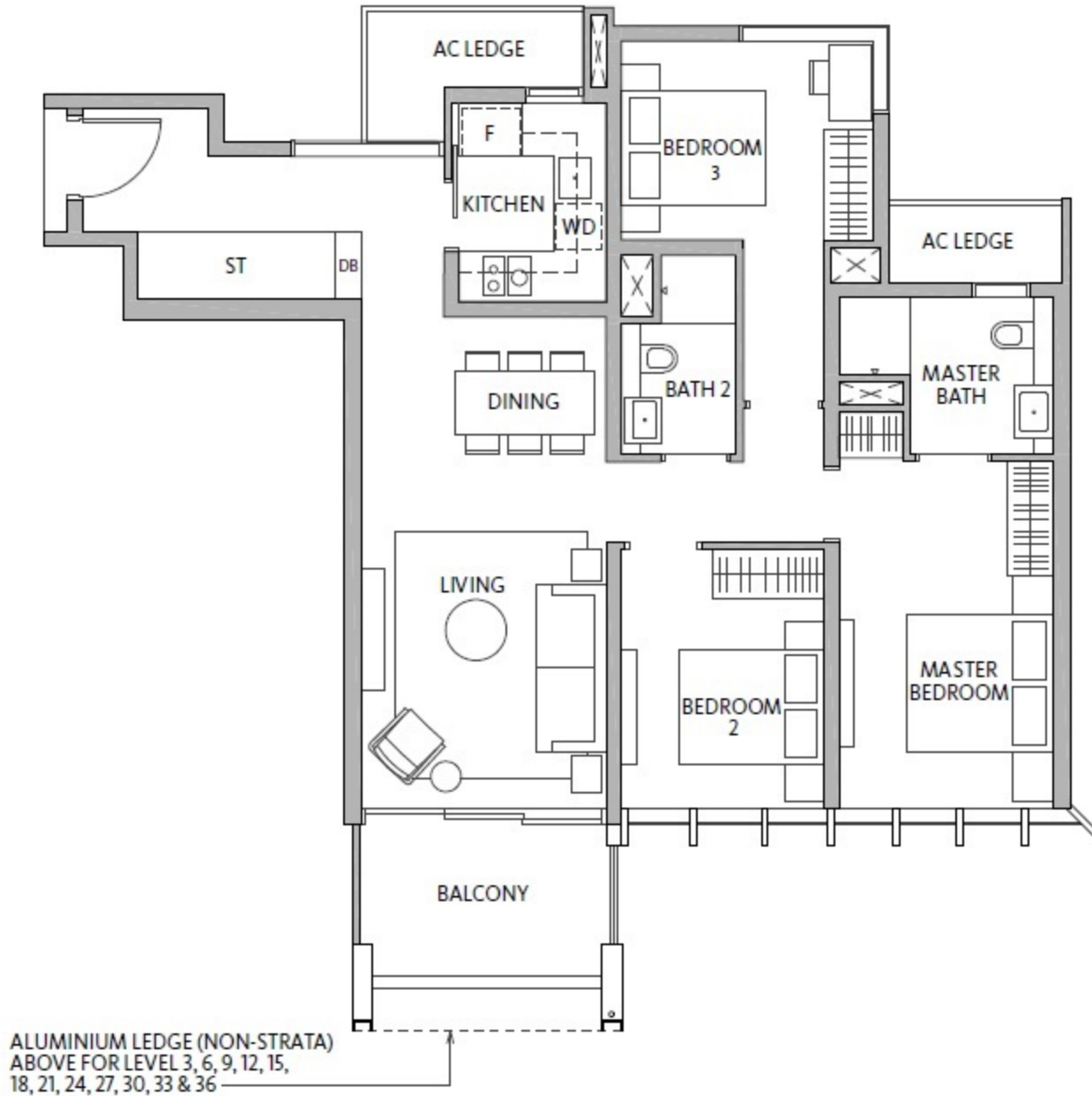
106 sqm / 1141 sqft

TYPE C1-2

#02-01 to #35-01

TYPE C1-2(h)

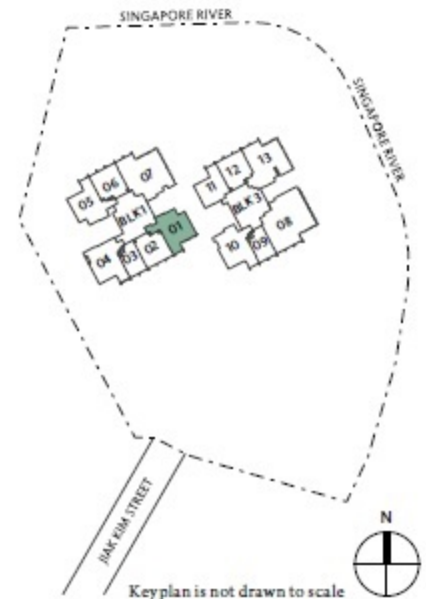
#36-01 (High Ceiling)



LEGEND:

- DB – Distribution Board
- WD – Washer cum Dryer
- ST – Storage
- F – Fridge
- AC Ledge – Air Conditioner Ledge
- Will not allowed to be hacked or altered (including by way of drilling) (Refer to the clause pertaining to PPVC in the S&P documents)
- Void Space (Non-strata)
- Rainwater Downpipe Shaft Space

Area includes air conditioner (A/C) ledge, balcony and strata void area where applicable. The above plans are subject to change as may be approved by the relevant authorities. All floor plans are approximate measurements only and are subject to government re-survey. The balcony shall not be enclosed unless with the approved balcony screen. The installation and cost of the screen shall be borne by the purchaser. For an illustration of the approved balcony screen, please refer to the diagram annexed hereto as 'Annexure A'.



3 BEDROOM

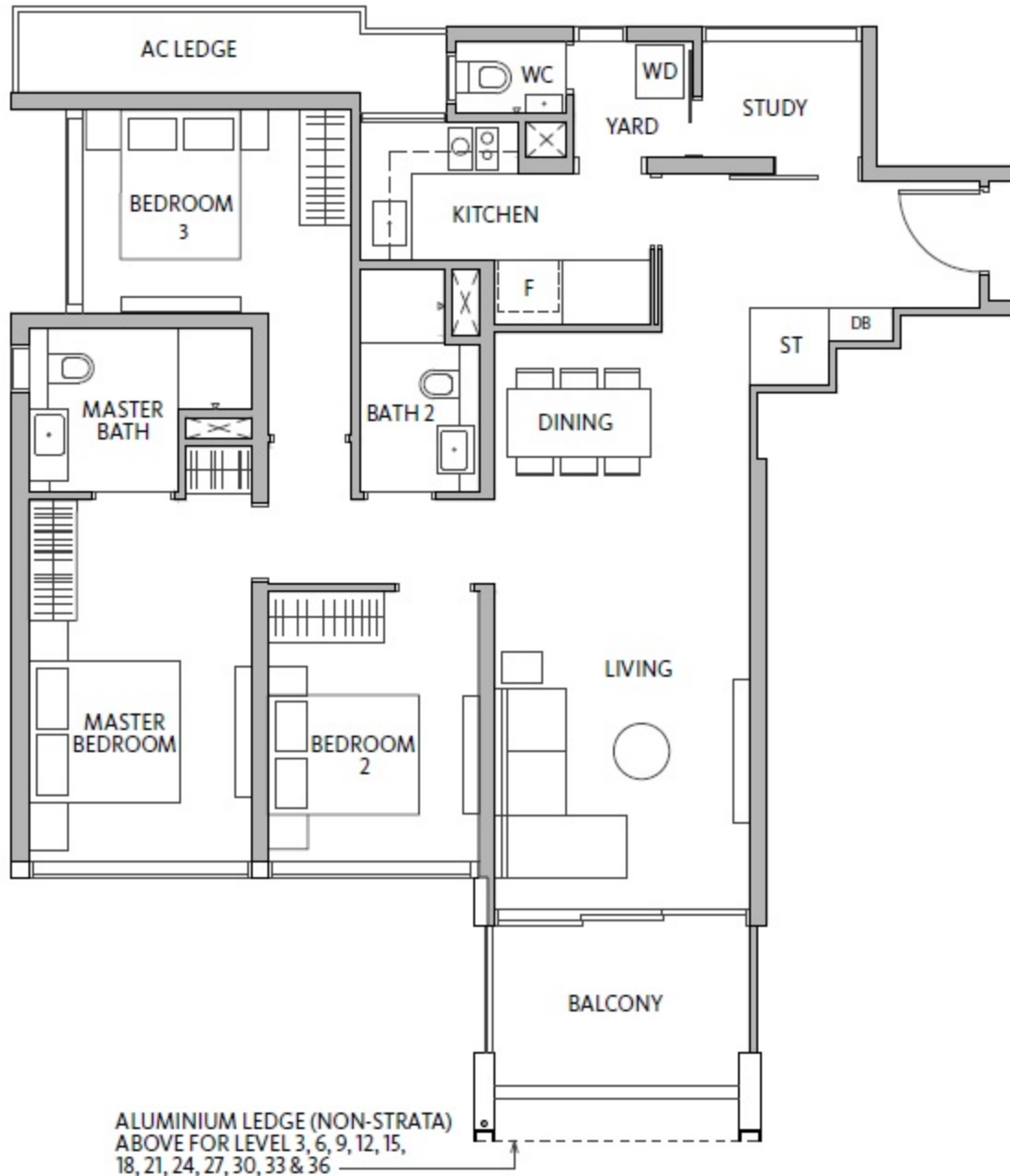
116 sqm / 1249 sqft

TYPE C2-2

#02-04 to #35-04

TYPE C2-2(h)

#36-04 (High Ceiling)



LEGEND:

- DB – Distribution Board
- WD – Washer cum Dryer
- ST – Storage
- F – Fridge
- AC Ledge – Air Conditioner Ledge
- Wall not allowed to be hacked or altered (including by way of drilling) (Refer to the clause pertaining to PPVC in the S&P documents)
- Void Space (Non-strata)
- Rainwater Downpipe Shaft Space

Area includes air conditioner (A/C) ledge, balcony and strata void area where applicable. The above plans are subject to change as may be approved by the relevant authorities. All floor plans are approximate measurements only and are subject to government re-survey. The balcony shall not be enclosed unless with the approved balcony screen. The installation and cost of the screen shall be borne by the purchaser. For an illustration of the approved balcony screen, please refer to the diagram annexed hereto as 'Annexure A'.



3 BEDROOM

140 sqm / 1507 sqft

TYPE C3

#02-13 to #35-13

TYPE C3(h)

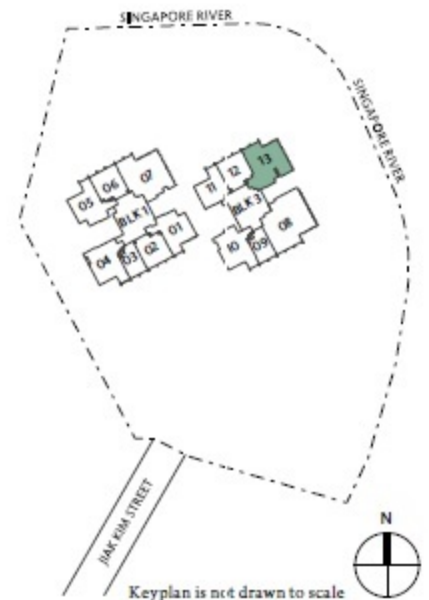
#36-13 (High Ceiling)



LEGEND:

- DB - Distribution Board
- W/D - Washing Machine and Dryer
- ST - Storage
- F - Fridge
- AC Ledge - Air Conditioner Ledge
- Wall not allowed to be hacked or altered (including by way of drilling) (Refer to the clause pertaining to PPVC in the S&P documents)
- Void Space (Non-strata)
- Rainwater Downpipe Shaft Space

Area includes air conditioner (A/C) ledge, balcony and strata void area where applicable. The above plans are subject to change as may be approved by the relevant authorities. All floor plans are approximate measurements only and are subject to government re-survey. The balcony shall not be enclosed unless with the approved balcony screen. The installation and cost of the screen shall be borne by the purchaser. For an illustration of the approved balcony screen, please refer to the diagram annexed hereto as 'Annexure A'.



3 BEDROOM

159 sqm / 1711 sqft

TYPE C4

#02-07 to #35-07

TYPE C4(h)

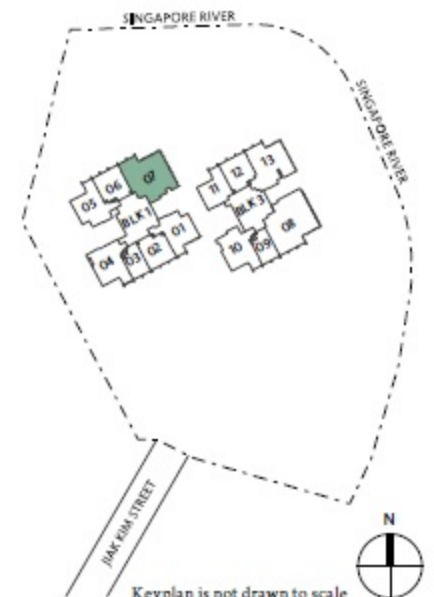
#36-07 (High Ceiling)



LEGEND:

- DB – Distribution Board
- W/D – Washing Machine and Dryer
- ST – Storage
- F – Fridge
- AC Ledge – Air Conditioner Ledge
- R.C. Beam – Reinforced Concrete Beam
- Wall not allowed to be hacked or altered (including by way of drilling) (Refer to the clause pertaining to PPVC in the S&P documents)
- Void Space (Non-strata)
- Rainwater Downpipe Shaft Space
- Maintenance Mesh (Non-strata)

Area includes air conditioner (A/C) ledge, balcony and strata void area where applicable. The above plans are subject to change as may be approved by the relevant authorities. All floor plans are approximate measurements only and are subject to government re-survey. The balcony shall not be enclosed unless with the approved balcony screen. The installation and cost of the screen shall be borne by the purchaser. For an illustration of the approved balcony screen, please refer to the diagram annexed hereto as 'Annexure A'.



4 BEDROOM

186 sqm / 2002 sqft

TYPE D1

#02-08 to #35-08

TYPE D1(h)

#36-08 (High Ceiling)



LEGEND:

- DB – Distribution Board
- W/D – Washing Machine and Dryer
- ST – Storage
- F – Fridge
- AC Ledge – Air Conditioner Ledge
- R.C. Beam – Reinforced Concrete Beam
- Wall not allowed to be hacked or altered (including by way of drilling) (Refer to the clause pertaining to PPVC in the S&P documents)
- Void Space (Non-strata)
- Rainwater Downpipe Shaft Space
- Maintenance Mesh (Non-strata)

Area includes air conditioner (A/C) ledge, balcony and strata void area where applicable. The above plans are subject to change as may be approved by the relevant authorities. All floor plans are approximate measurements only and are subject to government re-survey. The balcony shall not be enclosed unless with the approved balcony screen. The installation and cost of the screen shall be borne by the purchaser. For an illustration of the approved balcony screen, please refer to the diagram annexed hereto as 'Annexure A'.

