

UNIT DISTRIBUTION CHART

6 JALAN BUNGA RAMPAI S538310

Unit Level	1	2	3	4
16	3c-P	4a-P	2b-P	2c-P
15	3c	4a	2b	2c
14	3c	4a	2b	2c
13	3c	4a	2b	2c
12	3c	4a	2b	2c
11	3c	4a	2b	2c
10	3c	4a	2b	2c
9	3c	4a	2b	2c
8	3c	4a	2b	2c
7	3c	4a	2b	2c
6	3c	4a	2b	2c
5	3c	4a	2b	2c
4	3c	4a	2b	2c
3	3c	4a	2b	2c
2	3c	4a	2b	-
1				

8 JALAN BUNGA RAMPAI S538311

Unit Level	5	6	7	8
16	2b-P	2a-P	3a-P	3b-P
15	2b	2a	3a	3b
14	2b	2a	3a	3b
13	2b	2a	3a	3b
12	2b	2a	3a	3b
11	2b	2a	3a	3b
10	2b	2a	3a	3b
9	2b	2a	3a	3b
8	2b	2a	3a	3b
7	2b	2a	3a	3b
6	2b	2a	3a	3b
5	2b	2a	3a	3b
4	2b	2a	3a	3b
3	2b	2a	3a	3b
2				
1				

- 2-Bedroom (2a)
- 3-Bedroom (3a)
- 4-Bedroom + Study (4a)
- 2-Bedroom Premium 1 (2b)
- 3-Bedroom Premium 1 (3b)
- Penthouse
4-Bedroom + Study (4a-P)
- 2-Bedroom Premium 2 (2c)
- 3-Bedroom Premium 2 (3c)
- Penthouse
2-Bedroom (2a-P)
- Penthouse
3-Bedroom (3a-P)
- Penthouse
2-Bedroom Premium 1 (2b-P)
- Penthouse
3-Bedroom Premium 1 (3b-P)
- Penthouse
2-Bedroom Premium 2 (2c-P)
- Penthouse
3-Bedroom Premium 2 (3c-P)

2-BEDROOM

TYPE 2a

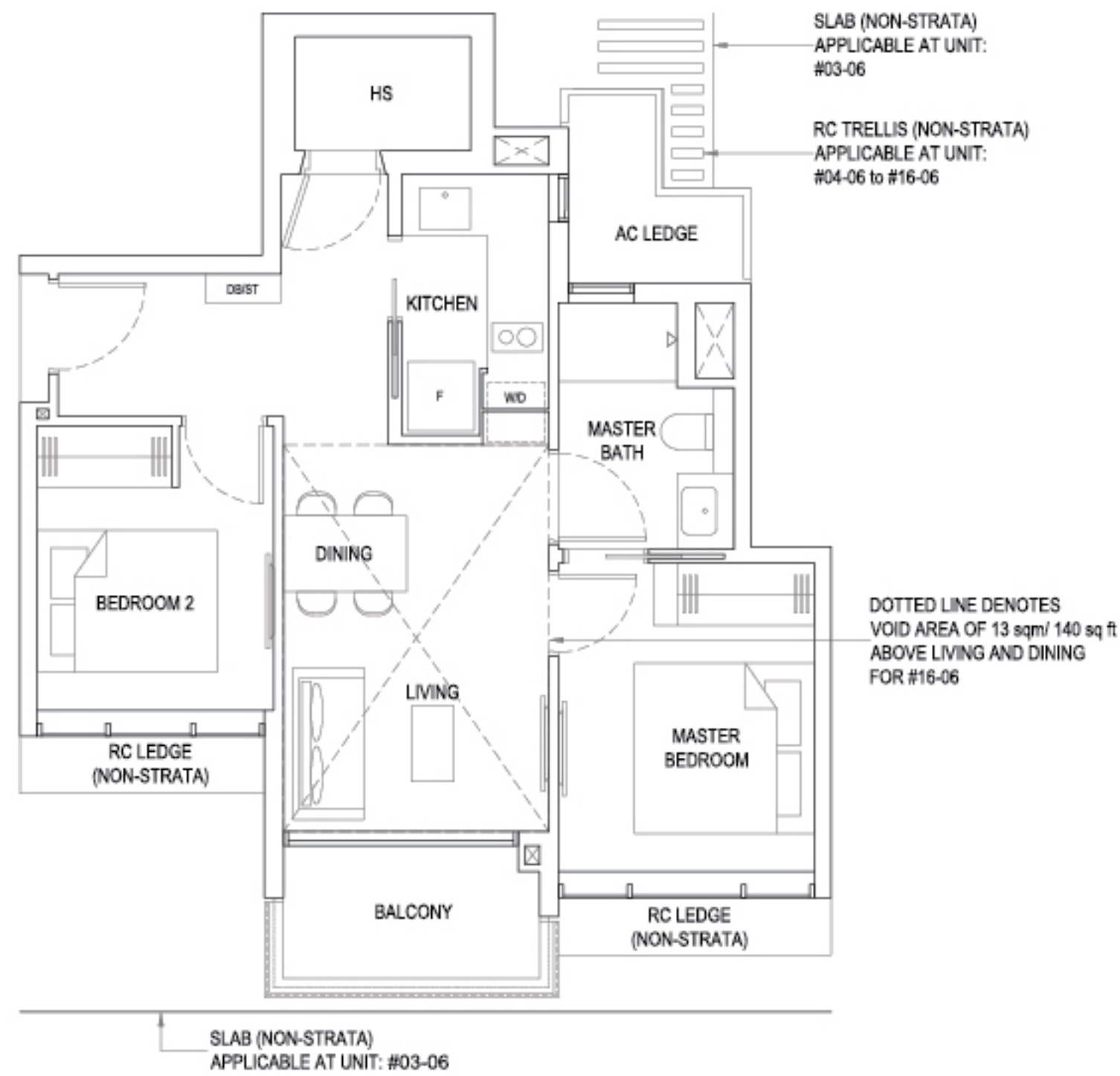
Area: 61 sq m / 657 sq ft
Unit(s): #03-06 to #15-06

TYPE 2a-P

Area: 74 sq m / 797 sq ft

Including strata void area of
13 sq m / 140 sq ft
above living and dining

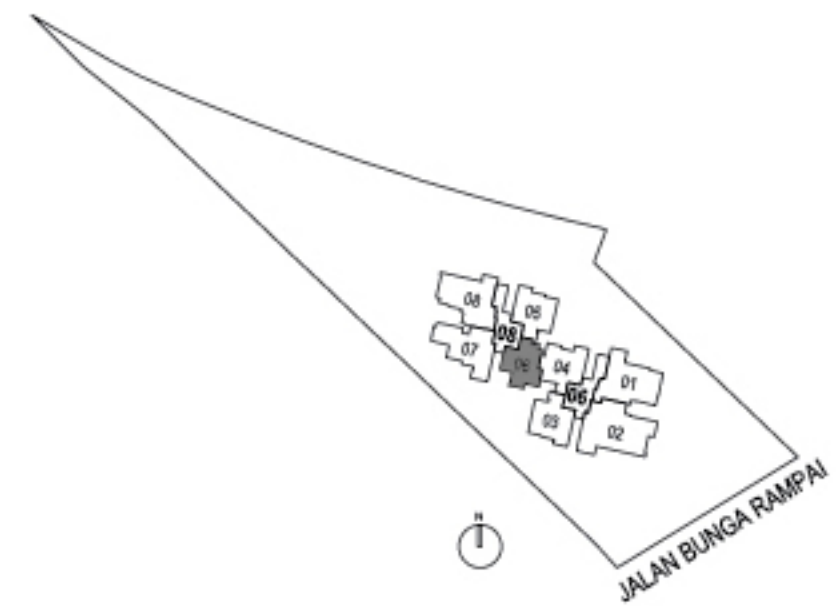
Unit(s): #16-06



LEGEND

DB/ST DISTRIBUTION BOARD/STORAGE
F FRIDGE
HS HOUSEHOLD SHELTER
W/D WASHER CUM DRYER

0 1 2 3 4 5M



Areas include AC ledge, balcony, PES and strata void where applicable. The plans are subjected to change as may be required by relevant authorities.
All areas and measurements stated herein as approximate and subject to final survey.

2-BEDROOM PREMIUM 1

TYPE 2b

Area: 68 sq m / 732 sq ft
 Unit(s): #02-03 to #15-03
 #03-05 to #15-05

TYPE 2b-P

Area: 80 sq m / 861 sq ft

Including strata void area of
 12 sq m / 129 sq ft
 above living and dining

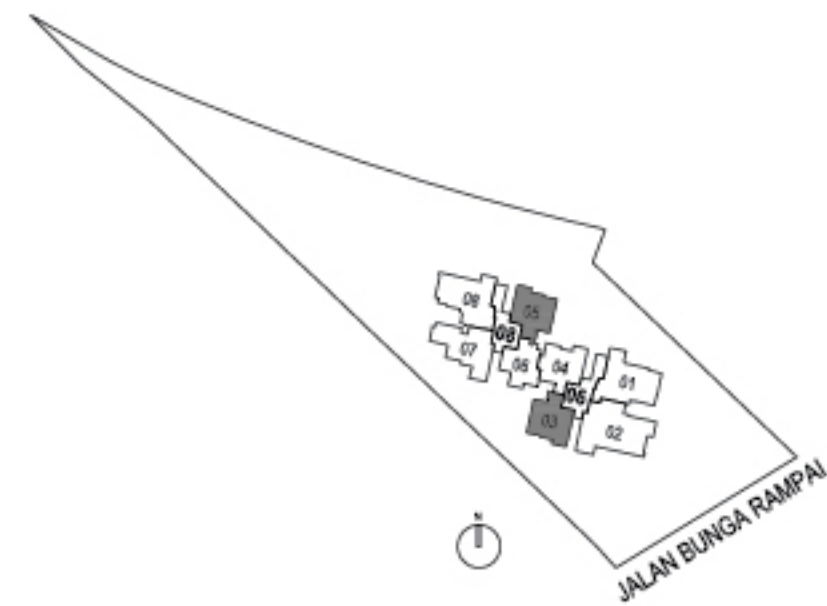
Unit(s): #16-03
 #16-05



LEGEND

- DB/ST DISTRIBUTION BOARD/STORAGE
- F FRIDGE
- HS HOUSEHOLD SHELTER
- W/D WASHER CUM DRYER

0 1 2 3 4 5M



Areas include AC ledge, balcony, PES and strata void where applicable. The plans are subjected to change as may be required by relevant authorities. All areas and measurements stated herein as approximate and subject to final survey.

2-BEDROOM PREMIUM 2

TYPE 2c

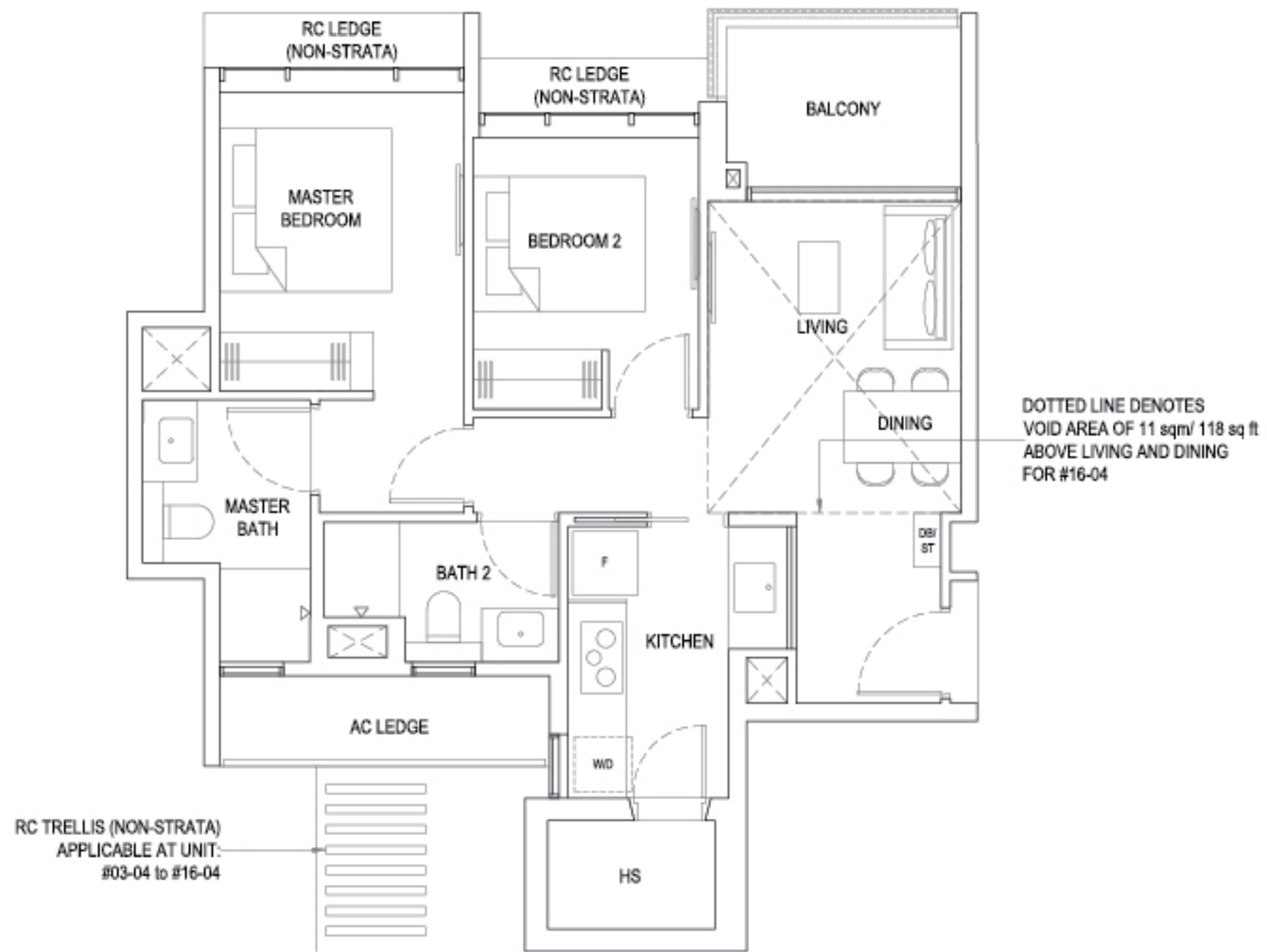
Area: 68 sq m / 732 sq ft
Unit(s): #03-04 to 15-04

TYPE 2c-P

Area: 79 sq m / 850 sq ft

Including strata void area of
11 sq m / 118 sq ft
above living and dining

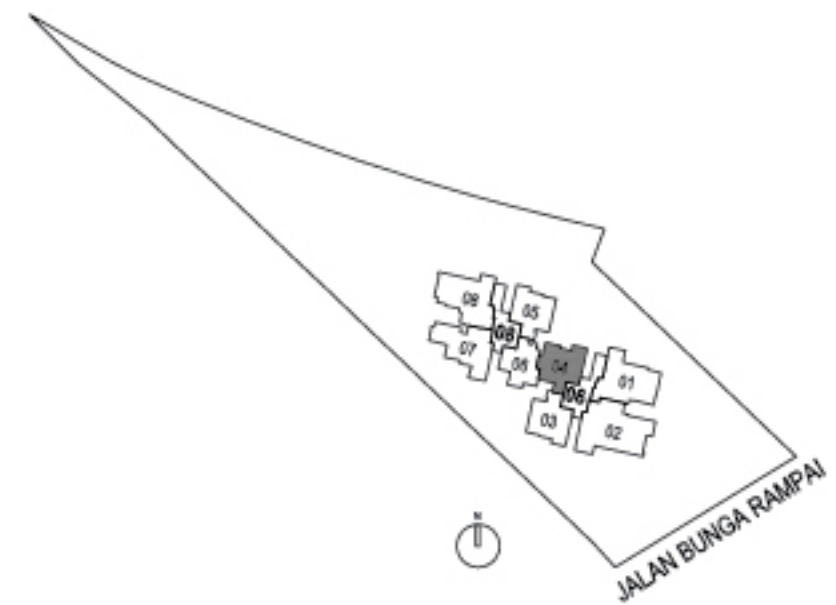
Unit(s): #16-04



LEGEND

DB/ST DISTRIBUTION BOARD/STORAGE
F FRIDGE
HS HOUSEHOLD SHELTER
W/D WASHER CUM DRYER

0 1 2 3 4 5M



Areas include AC ledge, balcony, PES and strata void where applicable. The plans are subjected to change as may be required by relevant authorities. All areas and measurements stated herein as approximate and subject to final survey.

3-BEDROOM

TYPE 3a

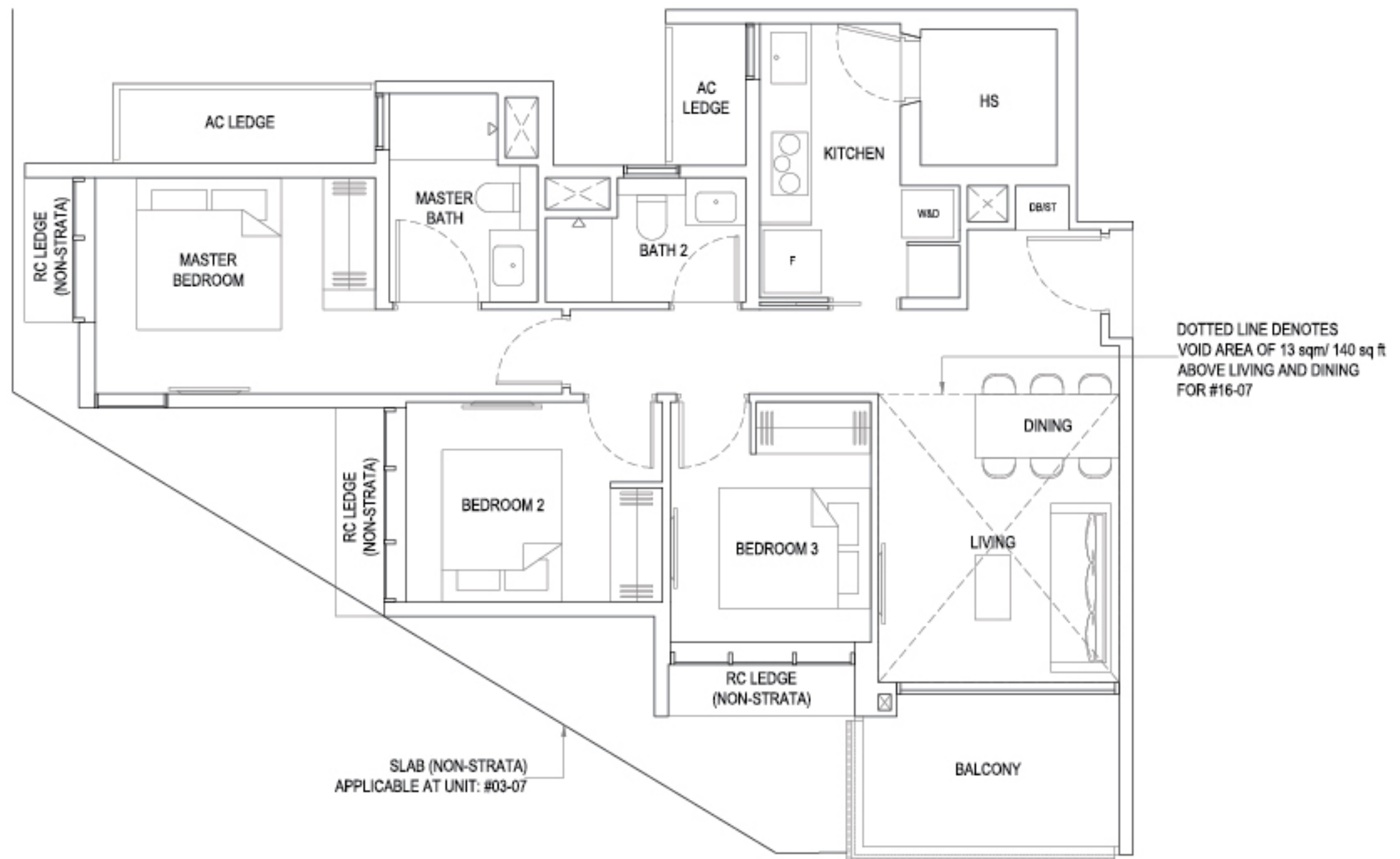
Area: 88 sq m / 947 sq ft
Unit(s): #03-07 to #15-07

TYPE 3a-P

Area: 101 sq m / 1087 sq ft

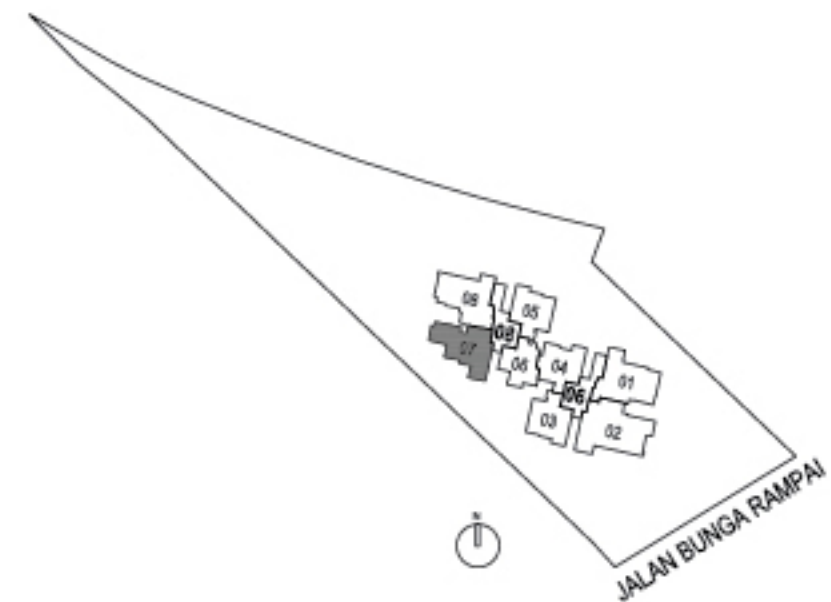
Including strata void area of
13 sq m / 140 sq ft
above living and dining

Unit(s): #16-07



LEGEND

- DB/ST DISTRIBUTION BOARD/STORAGE
- F FRIDGE
- HS HOUSEHOLD SHELTER
- W&D WASHER & DRYER



Areas include AC ledge, balcony, PES and strata void where applicable. The plans are subjected to change as may be required by relevant authorities.
All areas and measurements stated herein as approximate and subject to final survey.

3-BEDROOM PREMIUM 1

TYPE 3b

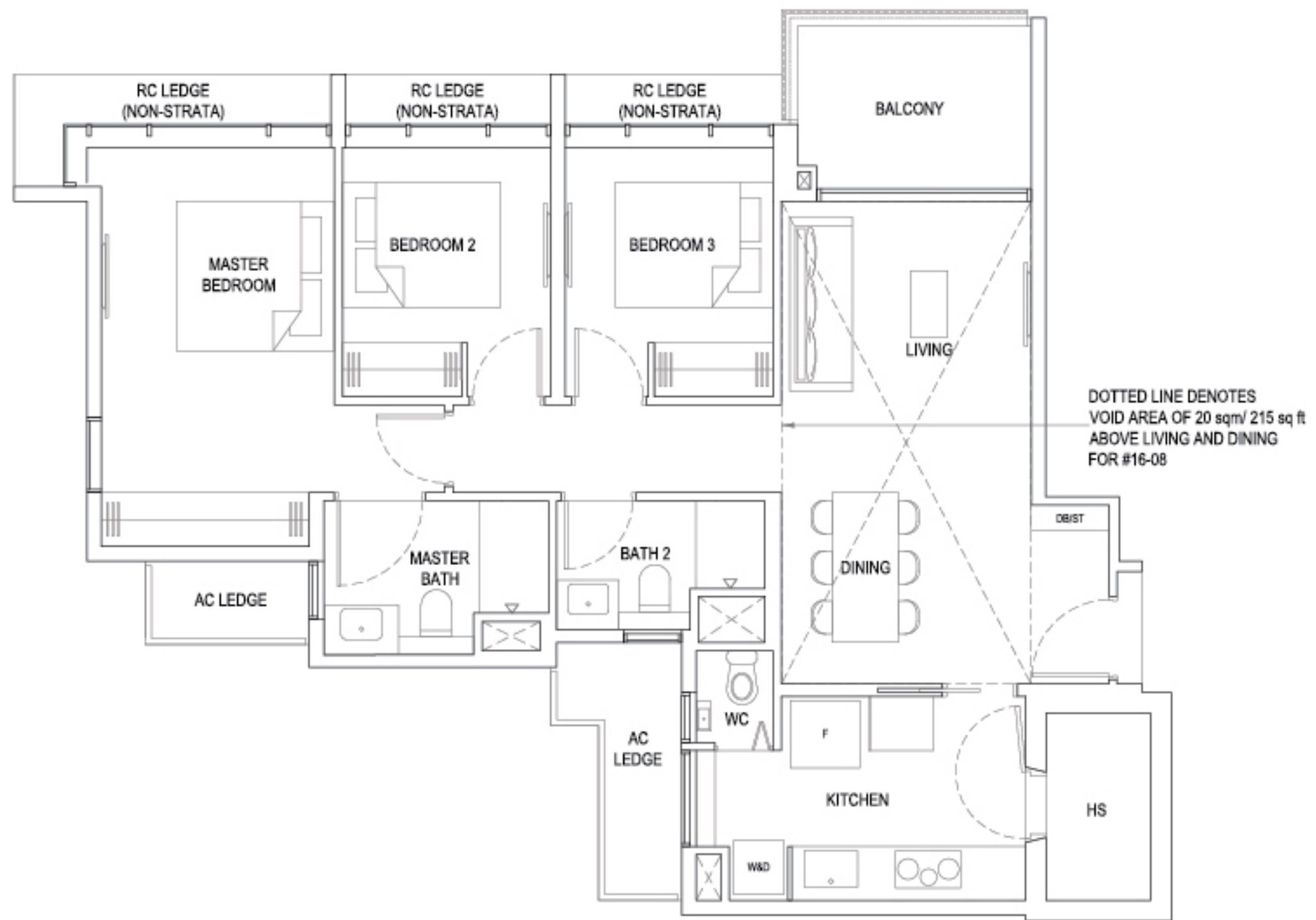
Area: 97 sq m / 1044 sq ft
Unit(s): #03-08 to #15-08

TYPE 3b-P

Area: 117 sq m / 1259 sq ft

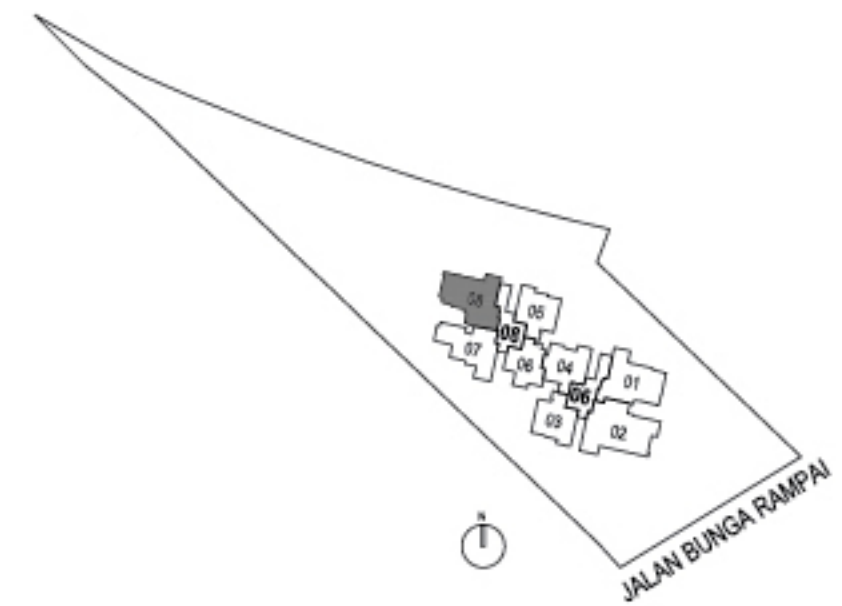
Including strata void area of
20 sq m / 215 sq ft
above living and dining

Unit(s): #16-08



LEGEND

- DB/ST DISTRIBUTION BOARD/STORAGE
- F FRIDGE
- HS HOUSEHOLD SHELTER
- W&D WASHER & DRYER



Areas include AC ledge, balcony, PES and strata void where applicable. The plans are subjected to change as may be required by relevant authorities. All areas and measurements stated herein as approximate and subject to final survey.

3-BEDROOM PREMIUM 2

TYPE 3c

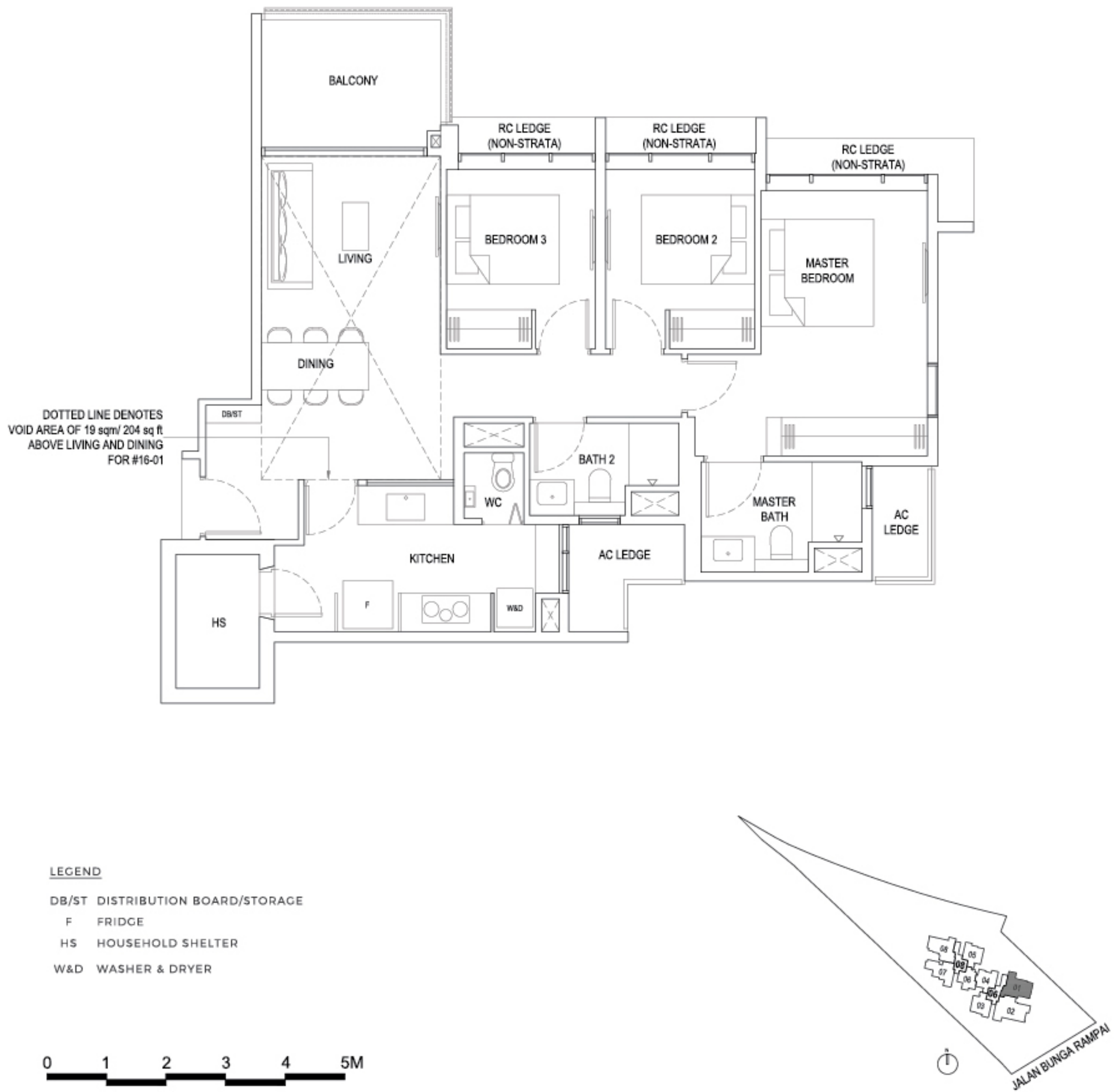
Area: 99 sq m / 1066 sq ft
Unit(s): #02-01 to #15-01

TYPE 3c-P

Area: 118 sq m / 1270 sq ft

Including strata void area of
19 sq m / 204 sq ft
above living and dining

Unit(s): #16-01



4-BEDROOM + STUDY

TYPE 4a

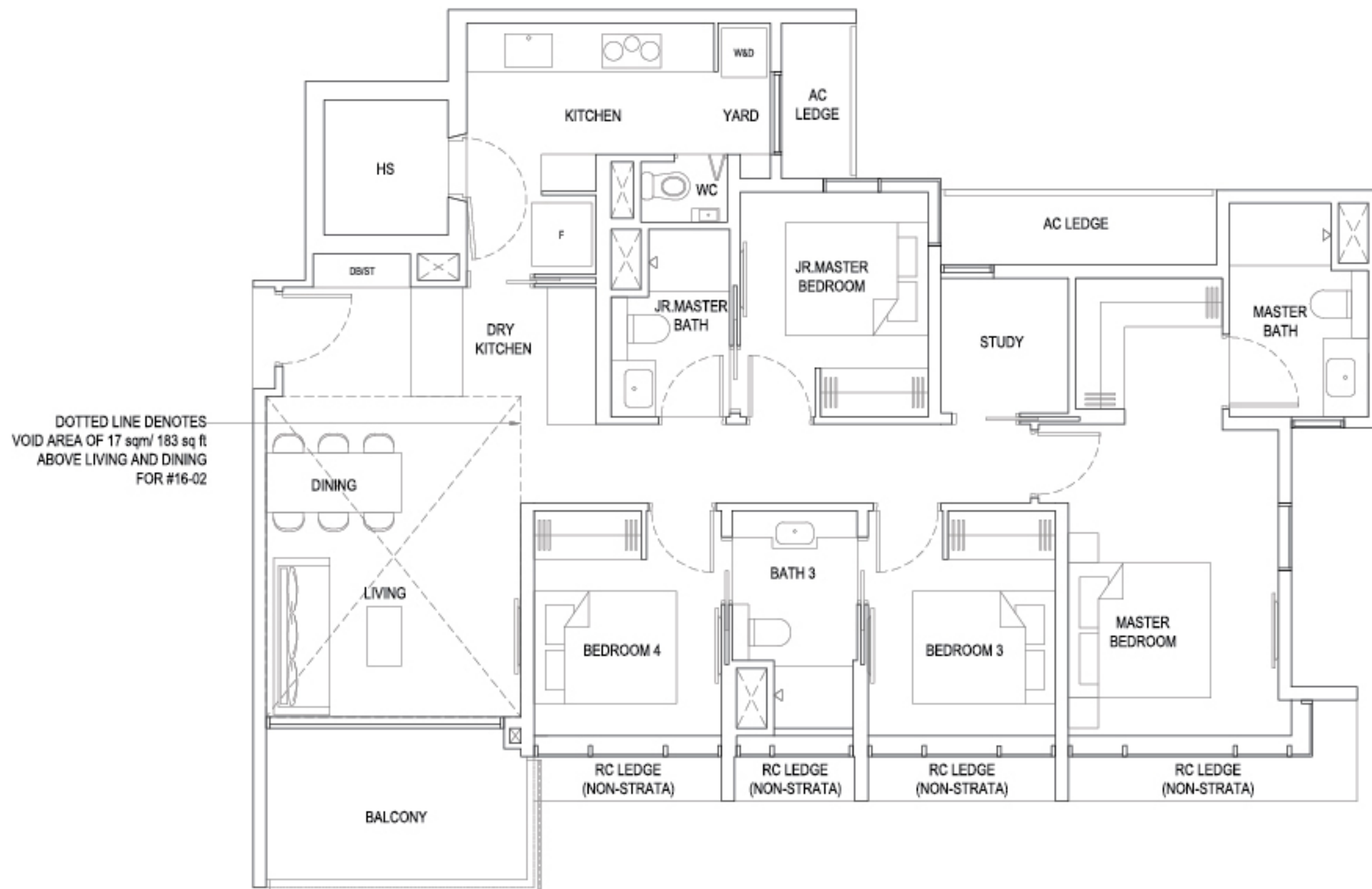
Area: 126 sq m / 1356 sq ft
Unit(s): #02-02 to #15-02

TYPE 4a-P

Area: 143 sq m / 1539 sq ft

Including strata void area of
17 sq m / 183 sq ft
above living and dining

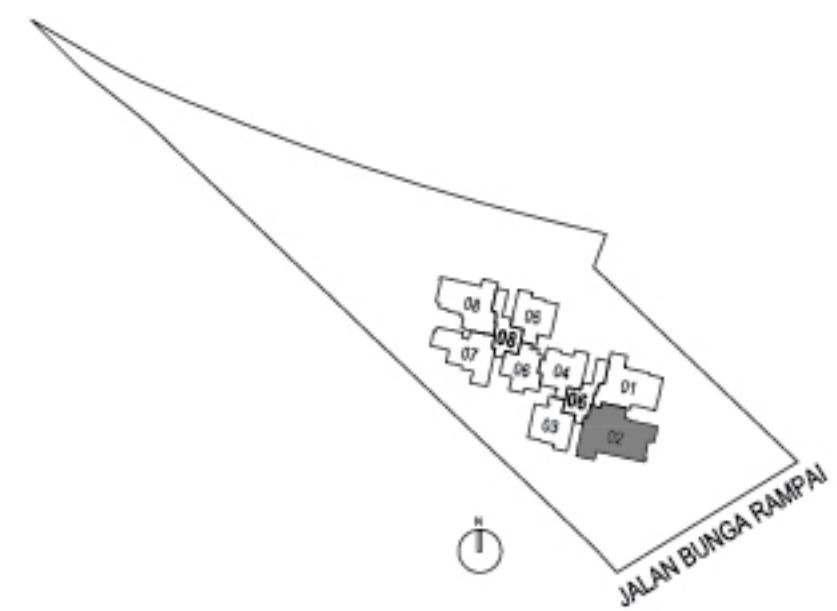
Unit(s): #16-02



DOTTED LINE DENOTES
VOID AREA OF 17 sqm/ 183 sq ft
ABOVE LIVING AND DINING
FOR #16-02

LEGEND

- DB/ST DISTRIBUTION BOARD/STORAGE
- F FRIDGE
- HS HOUSEHOLD SHELTER
- W&D WASHER & DRYER



Areas include AC ledge, balcony, PES and strata void where applicable. The plans are subjected to change as may be required by relevant authorities. All areas and measurements stated herein as approximate and subject to final survey.