

# 1 BEDROOM + STUDY

## Type AS1a(p)

44 sqm (474 sqft)

### Block 32B

#01-14

#01-20

### Block 34A

#01-34

### Block 34B

#01-46

### MIRRORED

### Block 34

#01-26\*

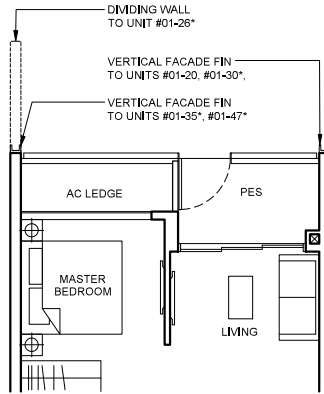
#01-30\*

### Block 34A

#01-35\*

### Block 34B

#01-47\*



## Type AS1a

44 sqm (474 sqft)

### Block 32B

#02-14 To #08-14

#02-20 To #09-20

### Block 34A

#02-34 To #08-34

### Block 34B

#02-46 To #08-46

### MIRRORED

### Block 34

#02-26\* To #09-26\*

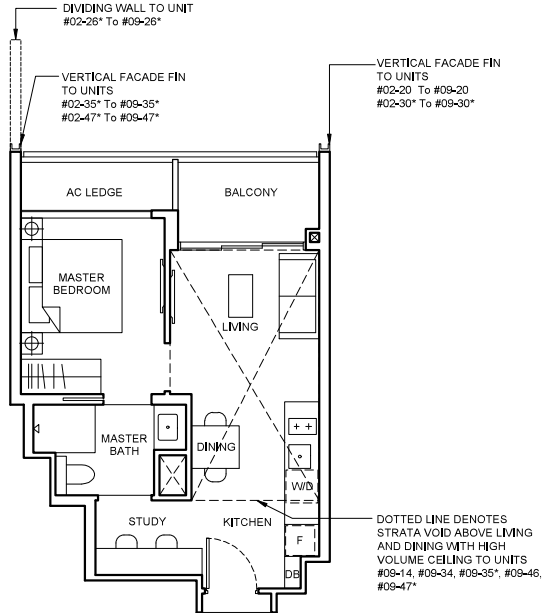
#02-30\* To #09-30\*

### Block 34A

#02-35\* To #08-35\*

### Block 34B

#02-47\* To #08-47\*



## Type AS1a(PH)

58 sqm (624 sqft)

Strata void area of 14 sqm / 150 sqft above living and dining with high volume ceiling of 4415mm H.

Balcony at top floor is provided with canopy.

### Block 32B

#09-14

### Block 34A

#09-34

### Block 34B

#09-46

### MIRRORED

### Block 34A

#09-35\*

### Block 34B

#09-47\*

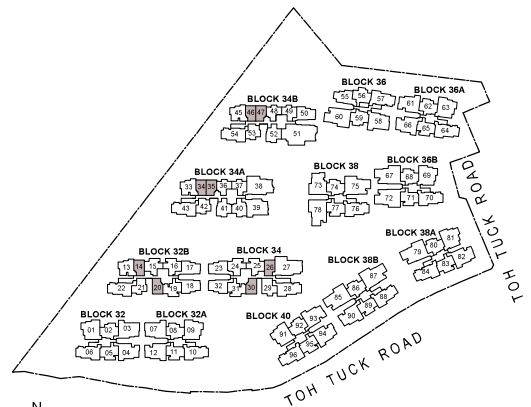
## LEGEND

[W/D] WASHER CUM DRYER

[F] INTEGRATED FRIDGE

## Note

- Area includes AC ledge, balcony and private enclosed space (PES), strata void (where applicable).
- The above plans and illustrations are subject to change as maybe required or approved by the relevant authorities.
- All floor areas are approximate only and subject to final survey.
- Please refer to the key plan for orientation.
- High volume space in (pd) unit does not constitute strata area.
- Service voids are excluded from strata area.
- RC ledge and / or RC trellis are excluded from strata area.



KEY PLAN IS NOT DRAWN TO SCALE.

# 1 BEDROOM + STUDY

## Type AS1b (PES)

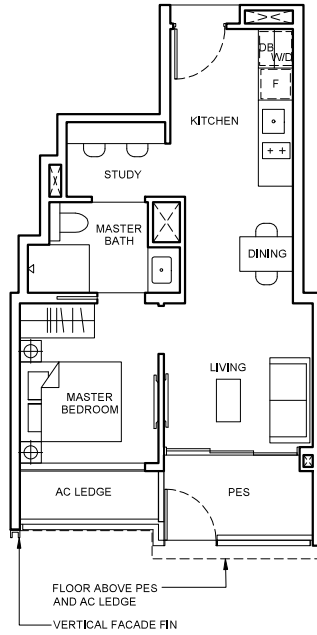
46 sqm (495 sqft)

Block 34A

#01-41

Block 34B

#01-52

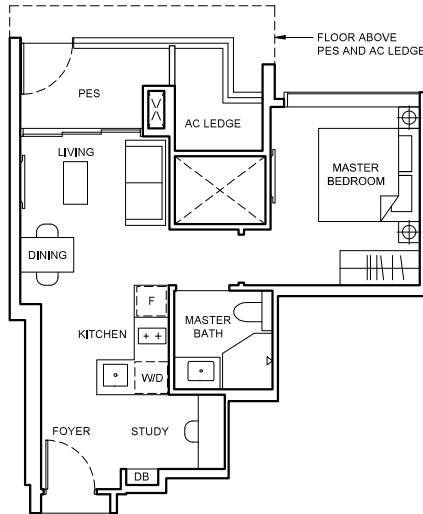


## Type AS2a (PES)

45 sqm (484 sqft)

Block 32B

#01-16

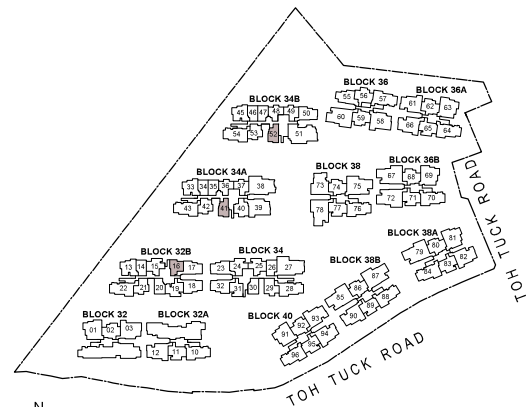


### LEGEND

[WD]	WASHER CUM DRYER	[F]	INTEGRATED FRIDGE
------	------------------	-----	-------------------

### Note

- Area includes AC ledge, balcony and private enclosed space (PES), strata void (where applicable).
- The above plans and illustrations are subject to change as maybe required or approved by the relevant authorities.
- All floor areas are approximate only and subject to final survey.
- Please refer to the key plan for orientation.
- High volume space in (pd) unit does not constitute strata area.
- Service voids are excluded from strata area.
- RC ledge and / or RC trellis are excluded from strata area.

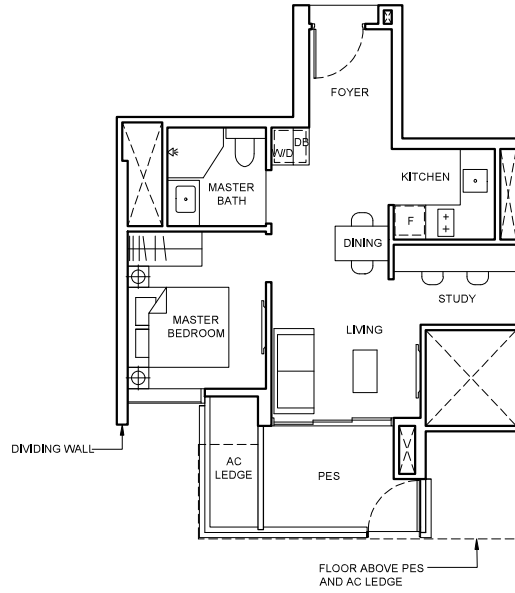


KEY PLAN IS NOT DRAWN TO SCALE.

# 1 BEDROOM + STUDY

## Type AS2b(PES) 47 sqm (506 sqft)

Block 34  
#01-31

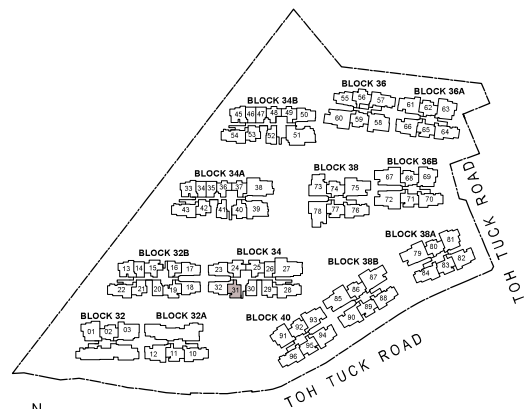


### LEGEND



### Note

- Area includes AC ledge, balcony and private enclosed space (PES), strata void (where applicable).
- The above plans and illustrations are subject to change as maybe required or approved by the relevant authorities.
- All floor areas are approximate only and subject to final survey.
- Please refer to the key plan for orientation.
- High volume space in (pd) unit does not constitute strata area.
- Service voids are excluded from strata area.
- RC ledge and / or RC trellis are excluded from strata area.



KEY PLAN IS NOT DRAWN TO SCALE.

# 2 BEDROOM

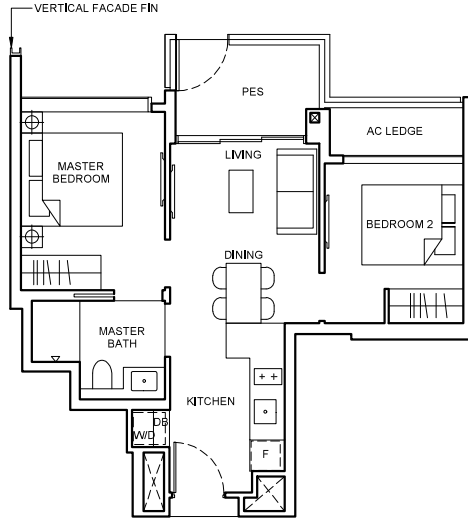
## Type B1(p) 51 sqm (549 sqft)

**Block 34A**

#01-36

**Block 34B**

#01-48

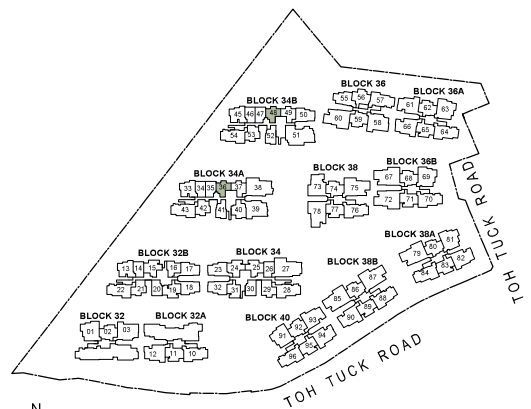


### LEGEND

[W/D] WASHER CUM DRYER      [F] INTEGRATED FRIDGE

### Note

- Area includes AC ledge, balcony and private enclosed space (PES), strata void (where applicable).
- The above plans and illustrations are subject to change as maybe required or approved by the relevant authorities.
- All floor areas are approximate only and subject to final survey.
- Please refer to the key plan for orientation.
- High volume space in (pd) unit does not constitute strata area.
- Service voids are excluded from strata area.
- RC ledge and / or RC trellis are excluded from strata area.

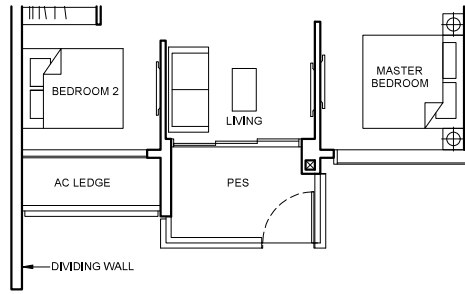


KEY PLAN IS NOT DRAWN TO SCALE.

# 2 BEDROOM

## Type B2a(p) 53 sqm (570 sqft)

- Block 32B**  
#01-21
- Block 34A**  
#01-42
- Block 34B**  
#01-53



## Type B2a 53 sqm (570 sqft)

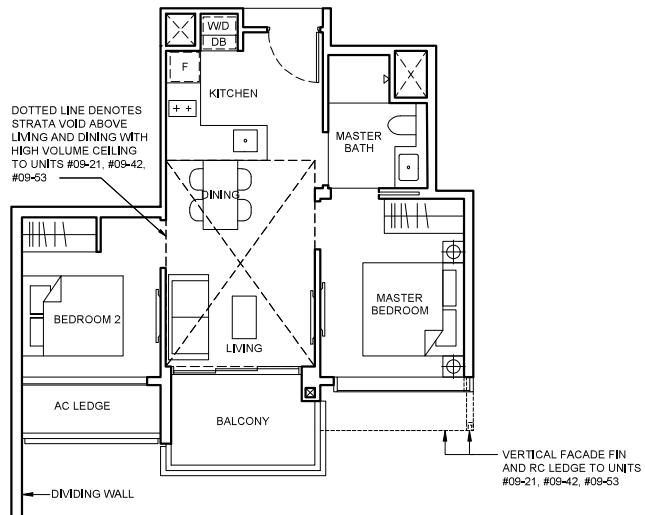
- Block 32B**  
#02-21 To #08-21
- Block 34A**  
#02-42 To #08-42
- Block 34B**  
#02-53 To #08-53

## Type B2a(PH) 65 sqm (700 sqft)

Strata void area of 12 sqm / 130 sqft above living and dining with high volume ceiling of 4415mm H.

Balcony at top floor is provided with canopy.

- Block 32B**  
#09-21
- Block 34A**  
#09-42
- Block 34B**  
#09-53

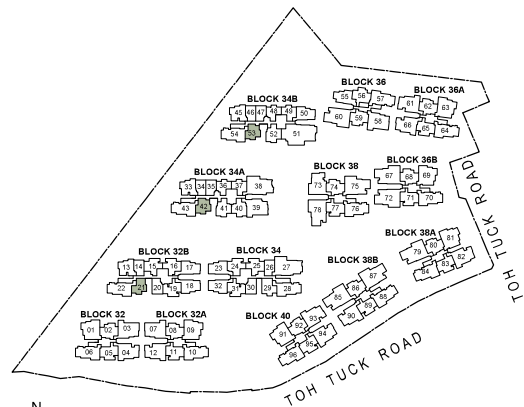


### LEGEND

- [W/D] WASHER CUM DRYER
- [F] INTEGRATED FRIDGE

### Note

- Area includes AC ledge, balcony and private enclosed space (PES), strata void (where applicable).
- The above plans and illustrations are subject to change as maybe required or approved by the relevant authorities.
- All floor areas are approximate only and subject to final survey.
- Please refer to the key plan for orientation.
- High volume space in (pd) unit does not constitute strata area.
- Service voids are excluded from strata area.
- RC ledge and / or RC trellis are excluded from strata area.

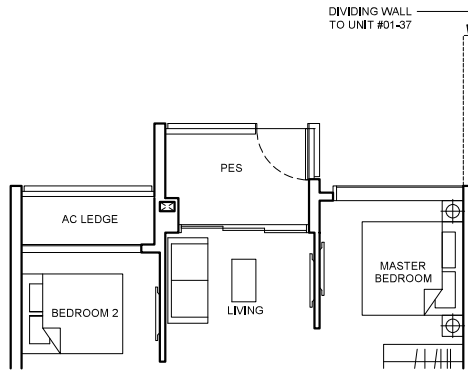


KEY PLAN IS NOT DRAWN TO SCALE.

# 2 BEDROOM

## Type B2b(p) 53 sqm (570 sqft)

**Block 34A**  
#01-37  
**Block 34B**  
#01-49

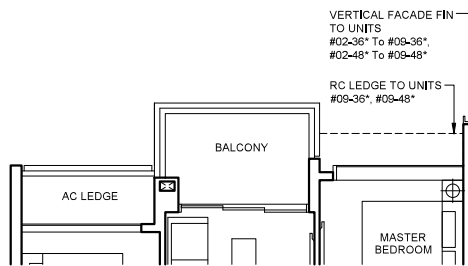
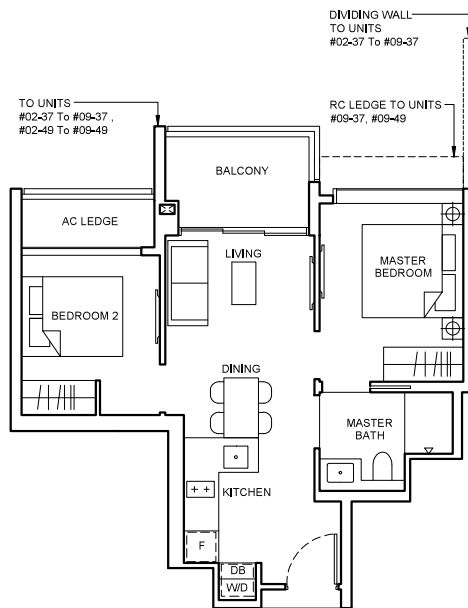


## Type B2b 53 sqm (570 sqft)

Balcony at top floor is provided with canopy.

**Block 34A**  
#02-37 To #09-37  
**Block 34B**  
#02-49 To #09-49

**MIRRORED**  
**Block 34A**  
#02-36\* To #09-36\*  
**Block 34B**  
#02-48\* To #09-48\*



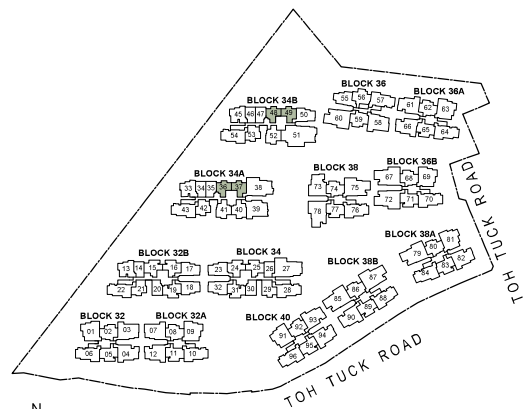
Applicable to units #02-36\* To #09-36\*  
#02-48\* To #09-48\*

### LEGEND

[W/D] WASHER CUM DRYER      [F] INTEGRATED FRIDGE

### Note

- Area includes AC ledge, balcony and private enclosed space (PES), strata void (where applicable).
- The above plans and illustrations are subject to change as maybe required or approved by the relevant authorities.
- All floor areas are approximate only and subject to final survey.
- Please refer to the key plan for orientation.
- High volume space in (pd) unit does not constitute strata area.
- Service voids are excluded from strata area.
- RC ledge and / or RC trellis are excluded from strata area.

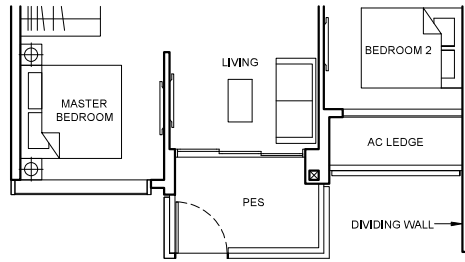


KEY PLAN IS NOT DRAWN TO SCALE.

# 2 BEDROOM

## Type B2c(p) 56 sqm (603 sqft)

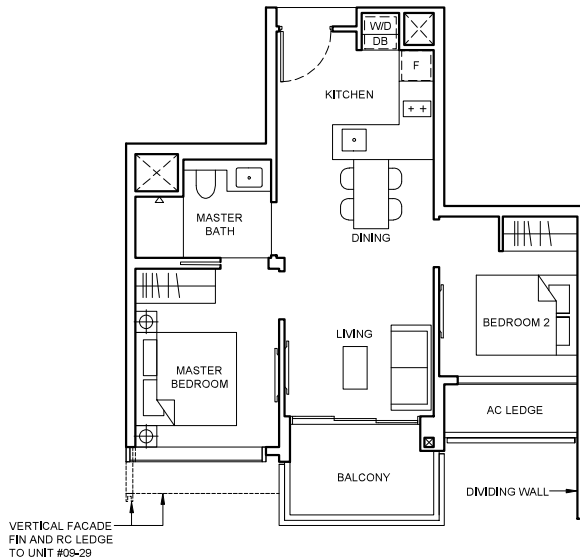
Block 34  
#01-29



## Type B2c 56 sqm (603 sqft)

Balcony at top floor is provided with canopy.

Block 34  
#02-29 To #09-29



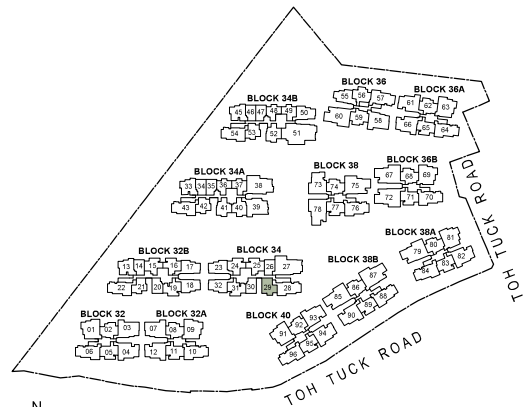
VERTICAL FACADE  
FIN AND RC LEDGE  
TO UNIT #03-29

### LEGEND

[W/D] WASHER CUM DRYER      [F] INTEGRATED FRIDGE

### Note

- Area includes AC ledge, balcony and private enclosed space (PES), strata void (where applicable).
- The above plans and illustrations are subject to change as maybe required or approved by the relevant authorities.
- All floor areas are approximate only and subject to final survey.
- Please refer to the key plan for orientation.
- High volume space in (pd) unit does not constitute strata area.
- Service voids are excluded from strata area.
- RC ledge and / or RC trellis are excluded from strata area.



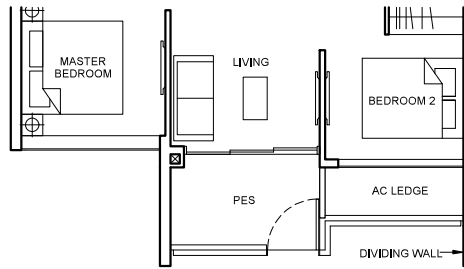
KEY PLAN IS NOT DRAWN TO SCALE.

# 2 BEDROOM + STUDY

## Type BS4(p)

64 sqm (689 sqft)

**Block 34A**  
#01-40



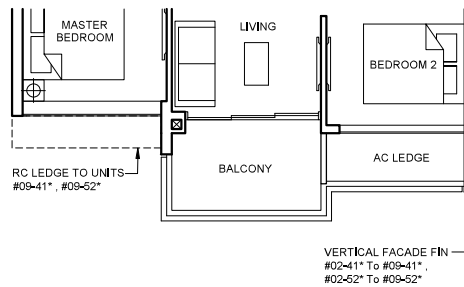
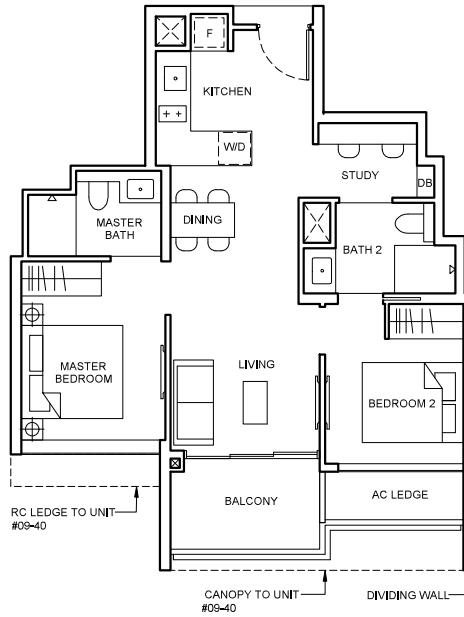
## Type BS4

64 sqm (689 sqft)

Balcony at top floor is provided with canopy.

**Block 34A**  
#02-40 To #09-40

**MIRRORED**  
**Block 34A**  
#02-41\* To #09-41\*  
**Block 34B**  
#02-52\* To #09-52\*



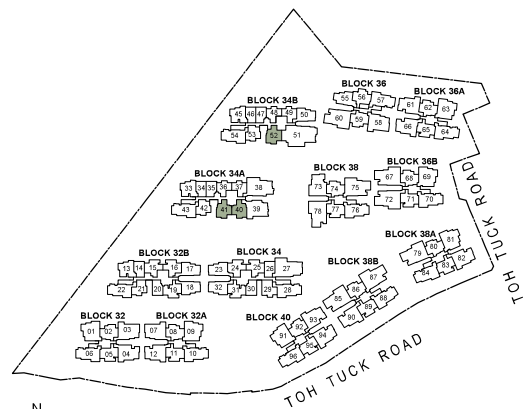
Applicable to units **#02-41\* To #09-41\***  
**#02-52\* To #09-52\***

### LEGEND

[WD] WASHER CUM DRYER      [F] INTEGRATED FRIDGE

### Note

- Area includes AC ledge, balcony and private enclosed space (PES), strata void (where applicable).
- The above plans and illustrations are subject to change as maybe required or approved by the relevant authorities.
- All floor areas are approximate only and subject to final survey.
- Please refer to the key plan for orientation.
- High volume space in (pd) unit does not constitute strata area.
- Service voids are excluded from strata area.
- RC ledge and / or RC trellis are excluded from strata area.



KEY PLAN IS NOT DRAWN TO SCALE.

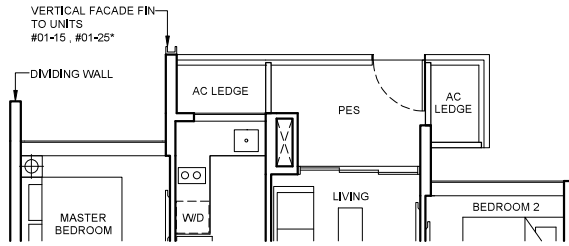


# 2 BEDROOM + STUDY

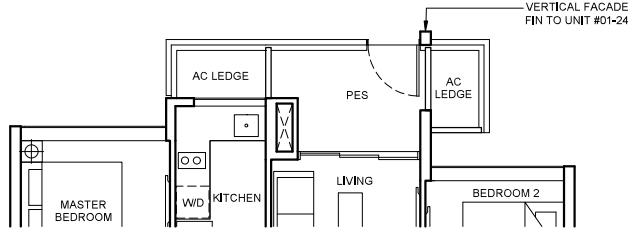
## Type BS5a(p) 67 sqm (721 sqft)

**Block 32B**  
#01-15  
**Block 34**  
#01-24

**MIRRORED**  
**Block 34**  
#01-25\*



Applicable to units #01-15, #01-25\*



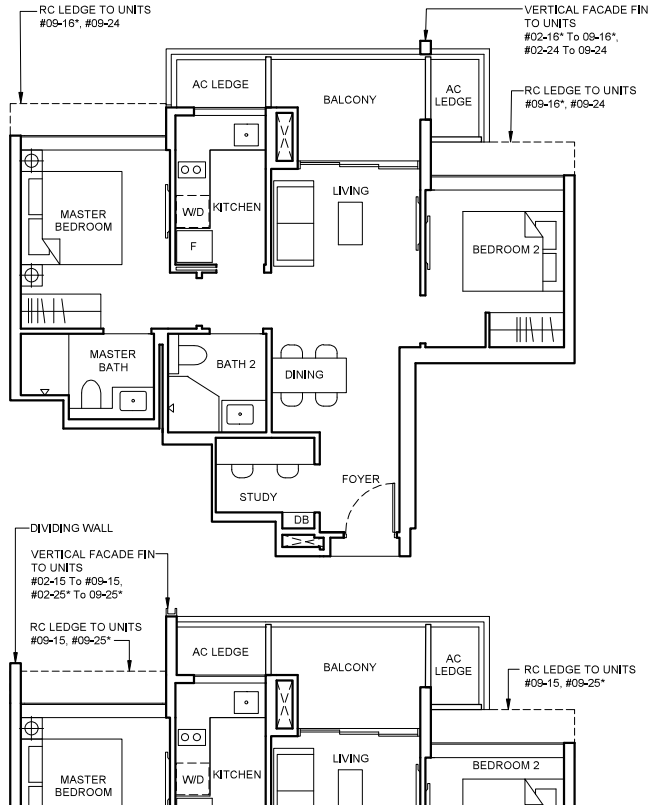
Applicable to unit #01-24

## Type BS5a 67 sqm (721 sqft)

Balcony at top floor is provided with canopy.

**Block 32B**  
#02-15 To #09-15  
**Block 34**  
#02-24 To #09-24

**MIRRORED**  
**Block 32B**  
#02-16\* To #09-16\*  
**Block 34**  
#02-25\* To #09-25\*



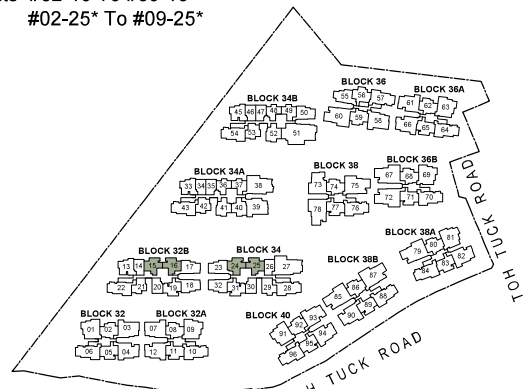
Applicable to units #02-15 To #09-15  
#02-25\* To #09-25\*

### LEGEND

[WD] WASHER CUM DRYER      [F] FRIDGE

### Note

- Area includes AC ledge, balcony and private enclosed space (PES), strata void (where applicable).
- The above plans and illustrations are subject to change as maybe required or approved by the relevant authorities.
- All floor areas are approximate only and subject to final survey.
- Please refer to the key plan for orientation.
- High volume space in (pd) unit does not constitute strata area.
- Service voids are excluded from strata area.
- RC ledge and / or RC trellis are excluded from strata area.

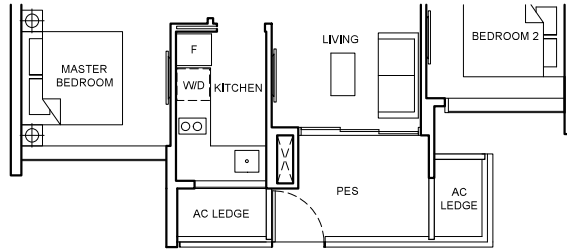


KEY PLAN IS NOT DRAWN TO SCALE.

# 2 BEDROOM + STUDY

## Type BS5b(p) 67 sqm (721 sqft)

**Block 32B**  
#01-19

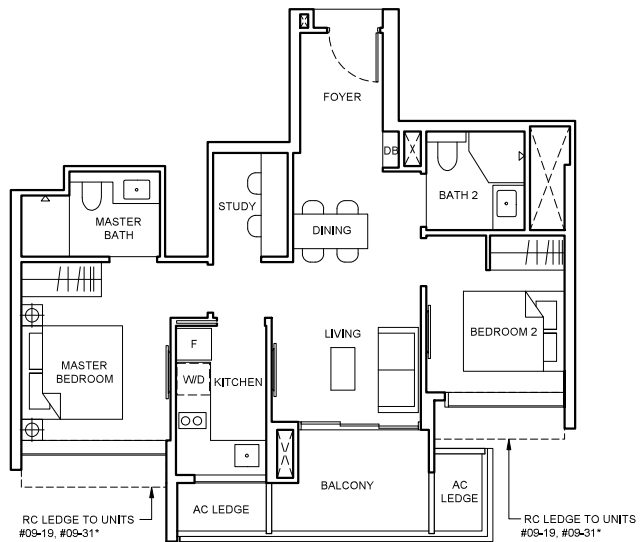


## Type BS5b 67 sqm (721 sqft)

Balcony at top floor is provided with canopy.

**Block 32B**  
#02-19 To #09-19

**MIRRORED**  
**Block 34**  
#02-31\* To #09-31\*

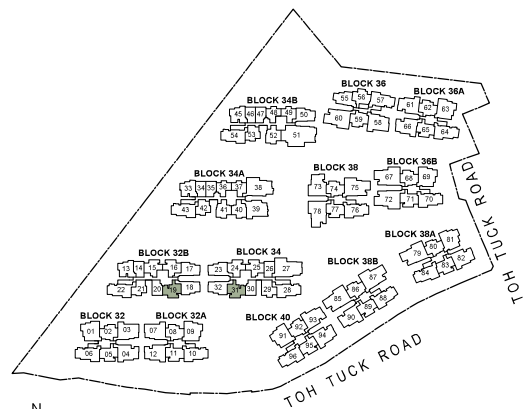


### LEGEND

[W/D] WASHER CUM DRYER      [F] FRIDGE

### Note

- Area includes AC ledge, balcony and private enclosed space (PES), strata void (where applicable).
- The above plans and illustrations are subject to change as maybe required or approved by the relevant authorities.
- All floor areas are approximate only and subject to final survey.
- Please refer to the key plan for orientation.
- High volume space in (pd) unit does not constitute strata area.
- Service voids are excluded from strata area.
- RC ledge and / or RC trellis are excluded from strata area.

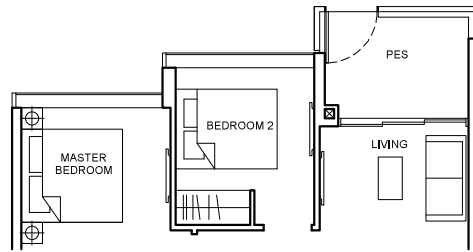


KEY PLAN IS NOT DRAWN TO SCALE.

# 2 BEDROOM + STUDY

## Type BS6a(p) 67 sqm (721 sqft)

- Block 32B**  
#01-13
- Block 34A**  
#01-33
- Block 34B**  
#01-45



## Type BS6a 67 sqm (721 sqft)

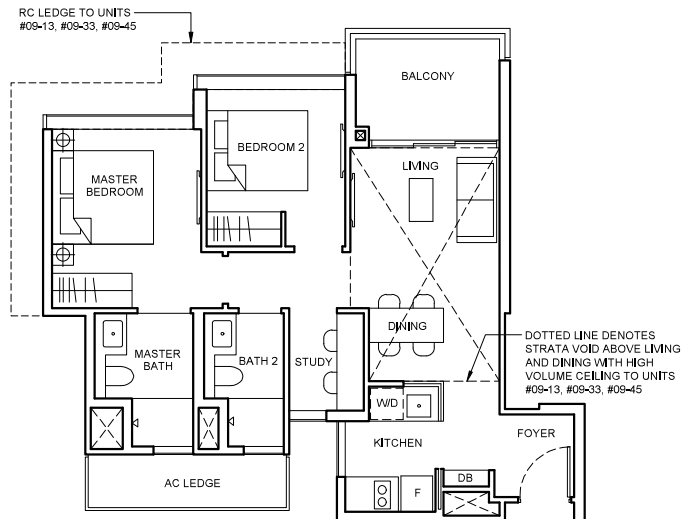
- Block 32B**  
#02-13 To #08-13
- Block 34A**  
#02-33 To #08-33
- Block 34B**  
#02-45 To #08-45

## Type BS6a(PH) 80 sqm (861 sqft)

Strata void area of 13 sqm / 140 sqft above living and dining with high volume ceiling of 4415mm H.

Balcony at top floor is provided with canopy.

- Block 32B**  
#09-13
- Block 34A**  
#09-33
- Block 34B**  
#09-45

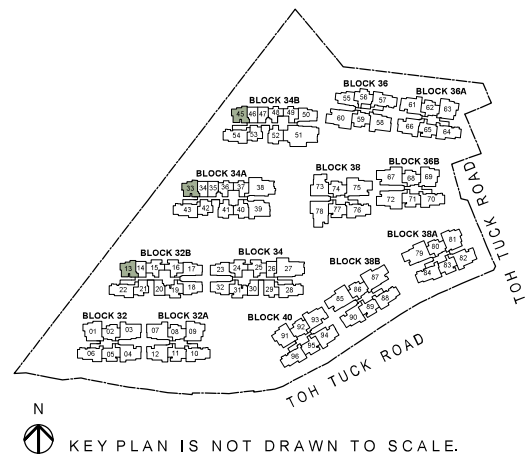


### LEGEND

- [W/D] WASHER CUM DRYER
- [F] FRIDGE

### Note

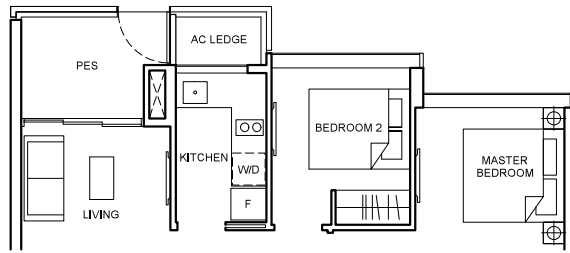
- Area includes AC ledge, balcony and private enclosed space (PES), strata void (where applicable).
- The above plans and illustrations are subject to change as maybe required or approved by the relevant authorities.
- All floor areas are approximate only and subject to final survey.
- Please refer to the key plan for orientation.
- High volume space in (pd) unit does not constitute strata area.
- Service voids are excluded from strata area.
- RC ledge and / or RC trellis are excluded from strata area.



# 2 BEDROOM + STUDY

## Type BS6b(p) 70 sqm (753 sqft)

**Block 34B**  
#01-50



## Type BS6b 70 sqm (753 sqft)

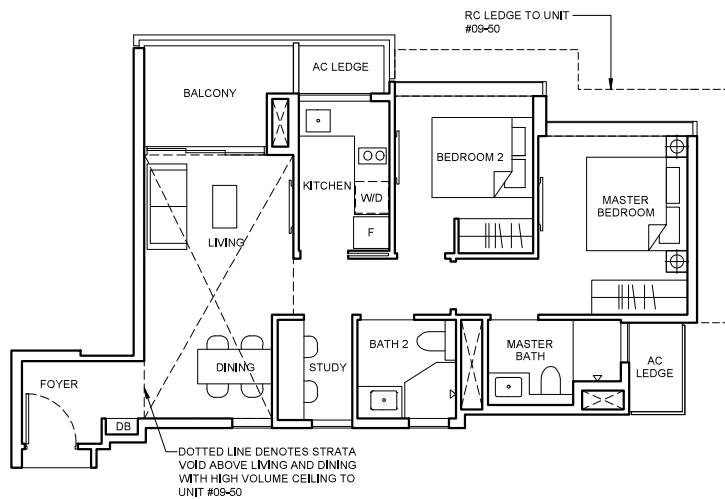
**Block 34B**  
#02-50 To #08-50

## Type BS6b(PH) 84 sqm (904 sqft)

Strata void area of 14 sqm / 151 sqft above living and dining with high volume ceiling of 4415mm H.

Balcony at top floor is provided with canopy.

**Block 34B**  
#09-50



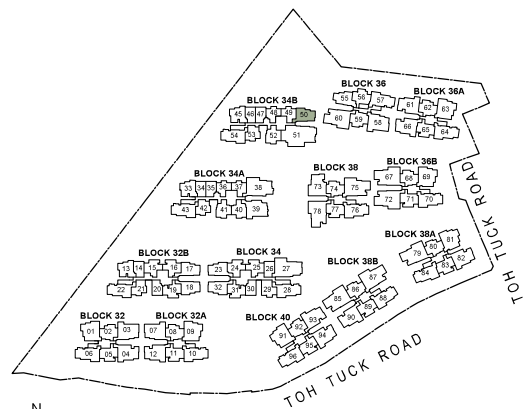
### LEGEND

[W/D] WASHER CUM DRYER

[F] FRIDGE

### Note

- Area includes AC ledge, balcony and private enclosed space (PES), strata void (where applicable).
- The above plans and illustrations are subject to change as maybe required or approved by the relevant authorities.
- All floor areas are approximate only and subject to final survey.
- Please refer to the key plan for orientation.
- High volume space in (pd) unit does not constitute strata area.
- Service voids are excluded from strata area.
- RC ledge and / or RC trellis are excluded from strata area.



KEY PLAN IS NOT DRAWN TO SCALE.

# 2 BEDROOM + STUDY

## Type BS6c(p)

71 sqm (764 sqft)

### Block 32B

#01-17

### Block 34

#01-32

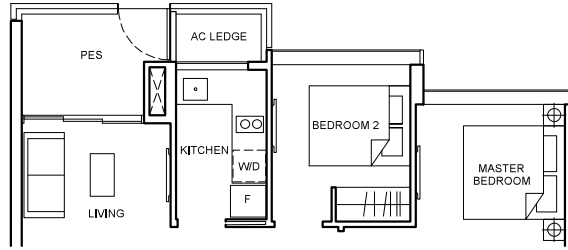
### MIRRORED

### Block 32B

#01-18\*

### Block 34

#01-23\*



## Type BS6c

71 sqm (764 sqft)

### Block 32B

#02-17 To #08-17

### Block 34

#02-32 To #09-32

### MIRRORED

### Block 32B

#02-18\* To #08-18\*

### Block 34

#02-23\* To #09-23\*

## Type BS6c(PH)

85 sqm (915 sqft)

Strata void area of 14 sqm / 151 sqft above living and dining with high volume ceiling of 4415mm H.

Balcony at top floor is provided with canopy.

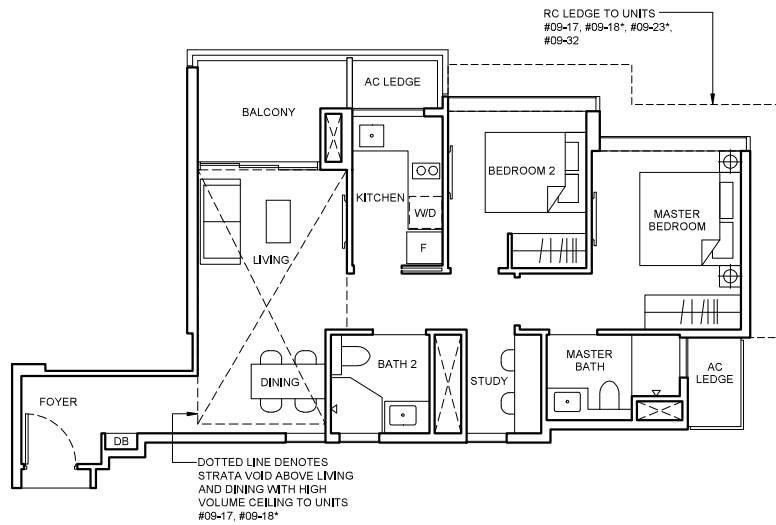
### Block 32B

#09-17

### MIRRORED

### Block 32B

#09-18\*



## LEGEND

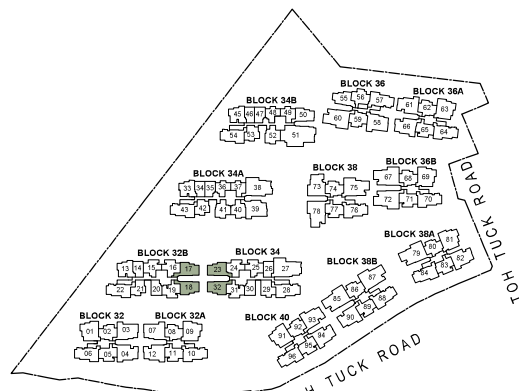
[WD] WASHER CUM DRYER

[F] FRIDGE

## Note

- Area includes AC ledge, balcony and private enclosed space (PES), strata void (where applicable).
- The above plans and illustrations are subject to change as maybe required or approved by the relevant authorities.
- All floor areas are approximate only and subject to final survey.
- Please refer to the key plan for orientation.
- High volume space in (pd) unit does not constitute strata area.
- Service voids are excluded from strata area.
- RC ledge and / or RC trellis are excluded from strata area.

0 1 2 3 5M



KEY PLAN IS NOT DRAWN TO SCALE.

# 2 BEDROOM DELUXE

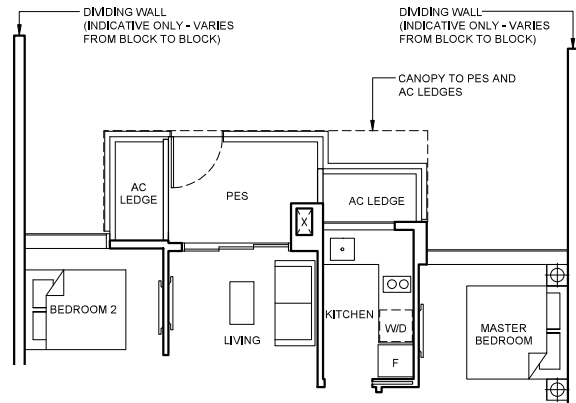
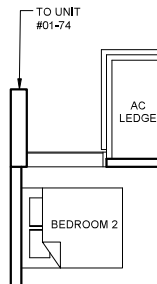
## Type BHS1a(pd)

68 sqm (732 sqft)

- Block 36A**
- #01-62
- Block 36B**
- #01-68
- Block 38**
- #01-74
- Block 38A**
- #01-80
- Block 38B**
- #01-86

**MIRRORED**

- Block 32**
- #01-02\*
- Block 36**
- #01-59\*
- Block 40**
- #01-92\*



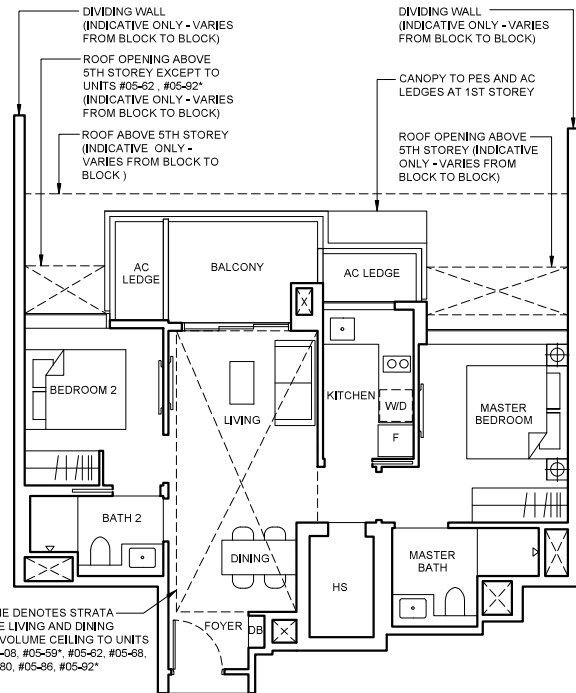
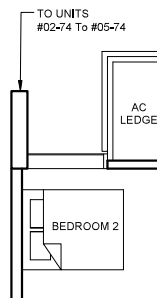
## Type BHS1a

68 sqm (732 sqft)

- Block 32A**
- #02-08 To #04-08
- Block 36A**
- #02-62 To #04-62
- Block 36B**
- #02-68 To #04-68
- Block 38**
- #02-74 To #04-74
- Block 38A**
- #02-80 To #04-80
- Block 38B**
- #02-86 To #04-86

**MIRRORED**

- Block 32**
- #02-02\* To #04-02\*
- Block 36**
- #02-59\* To #04-59\*
- Block 40**
- #02-92\* To #04-92\*



## Type BHS1a(PH)

84 sqm (904 sqft)

Strata void area of 16 sqm / 172 sqft above living and dining with high volume ceiling of 4590mm H.

- Block 32A**
- #05-08
- Block 36A**
- #05-62
- Block 36B**
- #05-68
- Block 38**
- #05-74
- Block 38A**
- #05-80
- Block 38B**
- #05-86

**MIRRORED**

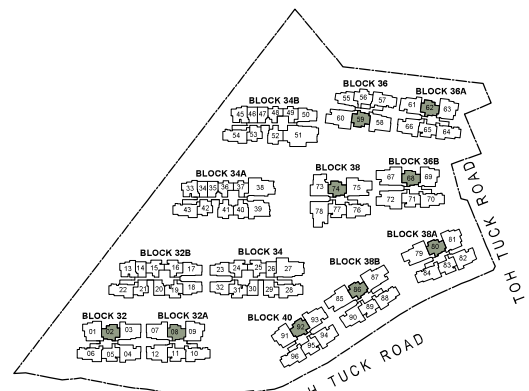
- Block 32**
- #05-02\*
- Block 36**
- #05-59\*
- Block 40**
- #05-92\*

### LEGEND

- [W/D] WASHER CUM DRYER
- [F] FRIDGE

### Note

- Area includes AC ledge, balcony and private enclosed space (PES), strata void (where applicable).
- The above plans and illustrations are subject to change as maybe required or approved by the relevant authorities.
- All floor areas are approximate only and subject to final survey.
- Please refer to the key plan for orientation.
- High volume space in (pd) unit does not constitute strata area.
- Service voids are excluded from strata area.
- RC ledge and / or RC trellis are excluded from strata area.



KEY PLAN IS NOT DRAWN TO SCALE.

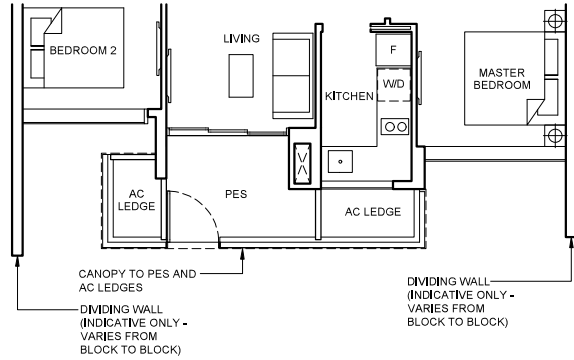
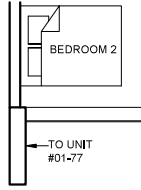
# 2 BEDROOM DELUXE

## Type BHS1b(pd)

69 sqm (743 sqft)

- Block 32A**
- #01-11
- Block 36A**
- #01-65
- Block 36B**
- #01-71
- Block 38**
- #01-77
- Block 38B**
- #01-89

- MIRRORED**
- Block 38A**
  - #01-83\*
  - Block 40**
  - #01-95\*

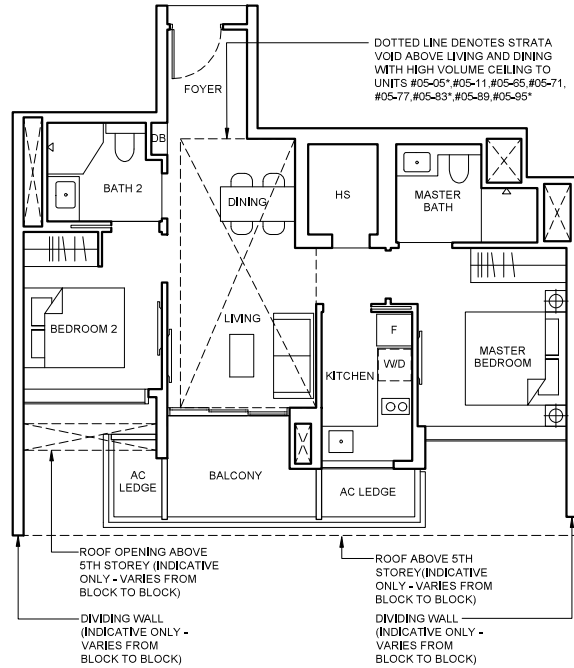
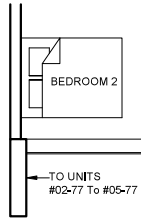


## Type BHS1b

69 sqm (743 sqft)

- Block 32A**
- #02-11 To #04-11
- Block 36A**
- #02-65 To #04-65
- Block 36B**
- #02-71 To #04-71
- Block 38**
- #02-77 To #04-77
- Block 38B**
- #02-89 To #04-89

- MIRRORED**
- Block 32**
  - #02-05\* To #04-05\*
  - Block 38A**
  - #02-83\* To #04-83\*
  - Block 40**
  - #02-95\* To #04-95\*



## Type BHS1b(PH)

83 sqm (893 sqft)

strata void area of 14 sqm / 150 sqft above living and dining with high volume ceiling of 4590mm H.

- Block 32A**
- #05-11
- Block 36A**
- #05-65
- Block 36B**
- #05-71
- Block 38**
- #05-77
- Block 38B**
- #05-89

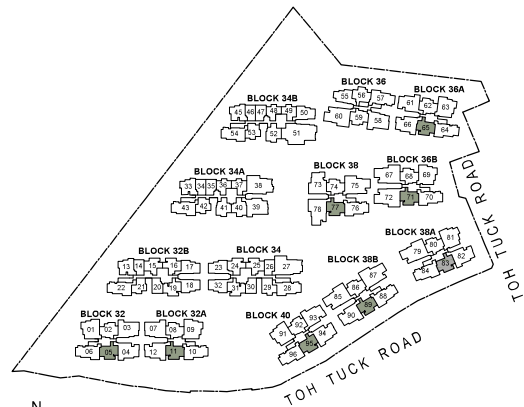
- MIRRORED**
- Block 32**
  - #05-05\*
  - Block 38A**
  - #05-83\*
  - Block 40**
  - #05-95\*

### LEGEND

- WASHER CUM DRYER
- FRIDGE

### Note

- Area includes AC ledge, balcony and private enclosed space (PES), strata void (where applicable).
- The above plans and illustrations are subject to change as maybe required or approved by the relevant authorities.
- All floor areas are approximate only and subject to final survey.
- Please refer to the key plan for orientation.
- High volume space in (pd) unit does not constitute strata area.
- Service voids are excluded from strata area.
- RC ledge and / or RC trellis are excluded from strata area.



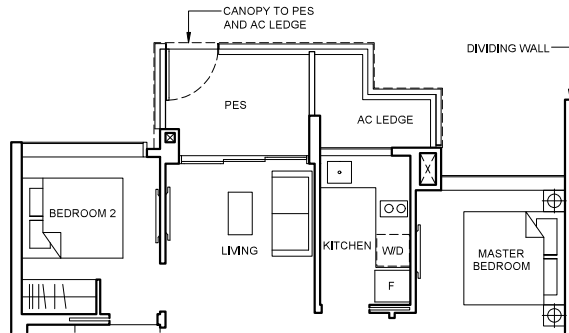
KEY PLAN IS NOT DRAWN TO SCALE.

# 2 BEDROOM DELUXE

## Type BHS1c(pd)

71 sqm (764 sqft)

Block 36  
#01-56



## Type BHS1c

71 sqm (764 sqft)

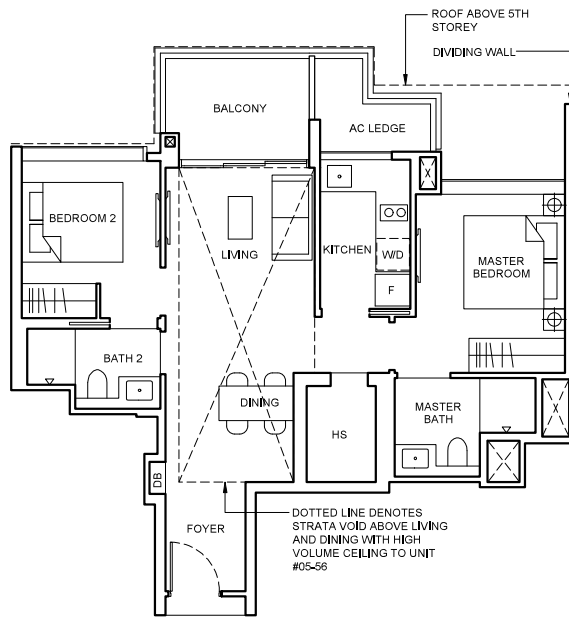
Block 36  
#02-56 To #04-56

## Type BHS1c(PH)

88 sqm (947 sqft)

Strata void area of 17 sqm / 183 sqft above living and dining with high volume ceiling of 4590mm H.

Block 36  
#05-56



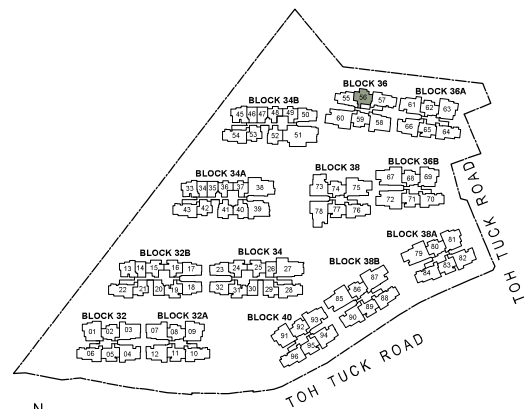
### LEGEND

[WD] WASHER CUM DRYER

[F] FRIDGE

### Note

- Area includes AC ledge, balcony and private enclosed space (PES), strata void (where applicable).
- The above plans and illustrations are subject to change as maybe required or approved by the relevant authorities.
- All floor areas are approximate only and subject to final survey.
- Please refer to the key plan for orientation.
- High volume space in (pd) unit does not constitute strata area.
- Service voids are excluded from strata area.
- RC ledge and / or RC trellis are excluded from strata area.



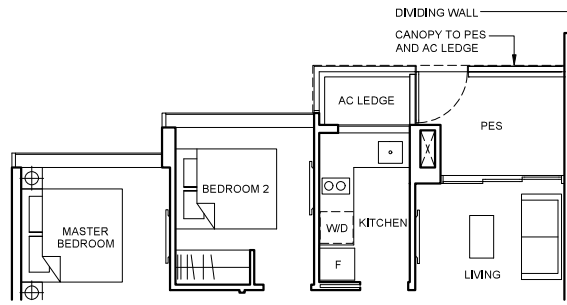
KEY PLAN IS NOT DRAWN TO SCALE.



# 2 BEDROOM DELUXE

## Type BHS2(pd) 71 sqm (764 sqft)

**Block 36**  
#01-55



## Type BHS2 71 sqm (764 sqft)

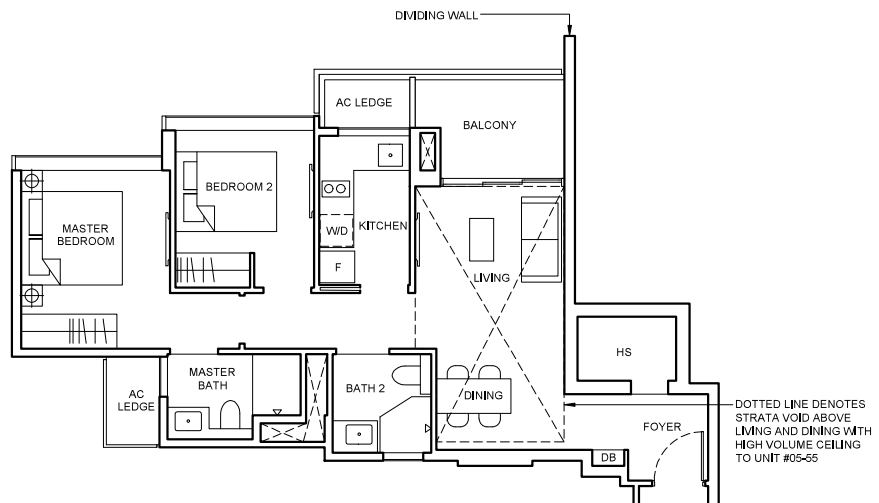
**Block 36**  
#02-55 To #04-55

## Type BHS2(PH) 86 sqm (926 sqft)

Strata void area of 15 sqm / 162 sqft above living and dining with high volume ceiling of 4590mm H.

Balcony at top floor is provided with canopy.

**Block 36**  
#05-55



DOTTED LINE DENOTES STRATA VOID ABOVE LIVING AND DINING WITH HIGH VOLUME CEILING TO UNIT #05-55

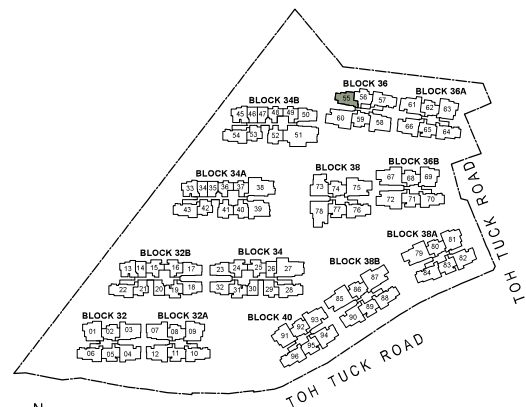
### LEGEND

[W/D] WASHER CUM DRYER      [F] FRIDGE

### Note

- Area includes AC ledge, balcony and private enclosed space (PES), strata void (where applicable).
- The above plans and illustrations are subject to change as maybe required or approved by the relevant authorities.
- All floor areas are approximate only and subject to final survey.
- Please refer to the key plan for orientation.
- High volume space in (pd) unit does not constitute strata area.
- Service voids are excluded from strata area.
- RC ledge and / or RC trellis are excluded from strata area.

0 1 2 3 5M



N  
KEY PLAN IS NOT DRAWN TO SCALE.

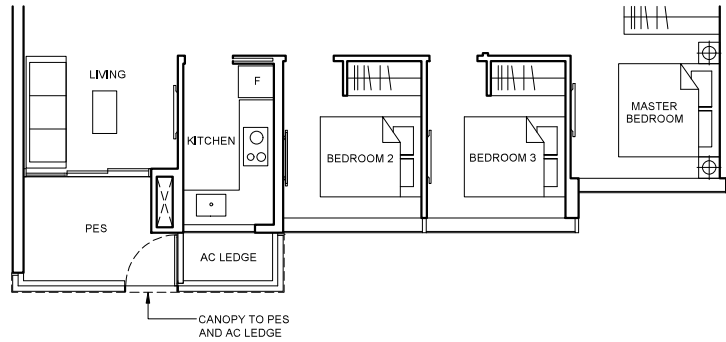
# 3 BEDROOM DELUXE

## Type C1a1(pd)

88 sqm (947 sqft)

**Block 32A**  
#01-10  
**Block 36A**  
#01-64  
**Block 36B**  
#01-70  
**Block 38B**  
#01-88

**MIRRORED**  
**Block 38A**  
#01-84\*  
**Block 40**  
#01-96\*

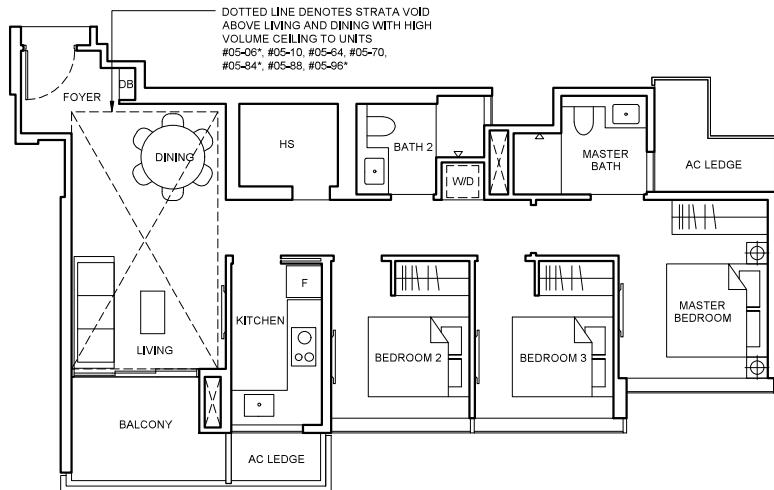


## Type C1a1

88 sqm (947 sqft)

**Block 32A**  
#02-10 To #04-10  
**Block 36A**  
#02-64 To #04-64  
**Block 36B**  
#02-70 To #04-70  
**Block 38B**  
#02-88 To #04-88

**MIRRORED**  
**Block 32**  
#02-06\* To #04-06\*  
**Block 38A**  
#02-84\* To #04-84\*  
**Block 40**  
#02-96\* To #04-96\*



## Type C1a1(PH)

104 sqm (1119 sqft)

Strata void area of 16 sqm / 172 sqft above living and dining with high volume ceiling of 4590mm H.

Balcony at top floor is provided with canopy.

**Block 32A**  
#05-10  
**Block 36A**  
#05-64  
**Block 36B**  
#05-70  
**Block 38B**  
#05-88

**MIRRORED**  
**Block 32**  
#05-06\*  
**Block 38A**  
#05-84\*  
**Block 40**  
#05-96\*

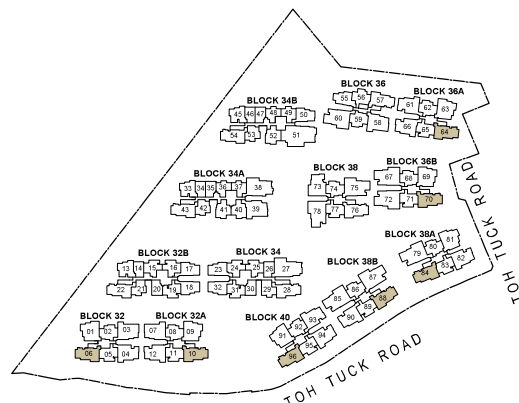
## LEGEND

[W/D] WASHER CUM DRYER      [F] FRIDGE

## Note

- Area includes AC ledge, balcony and private enclosed space (PES), strata void (where applicable).
- The above plans and illustrations are subject to change as maybe required or approved by the relevant authorities.
- All floor areas are approximate only and subject to final survey.
- Please refer to the key plan for orientation.
- High volume space in (pd) unit does not constitute strata area.
- Service voids are excluded from strata area.
- RC ledge and / or RC trellis are excluded from strata area.

0 1 2 3 5M



KEY PLAN IS NOT DRAWN TO SCALE.

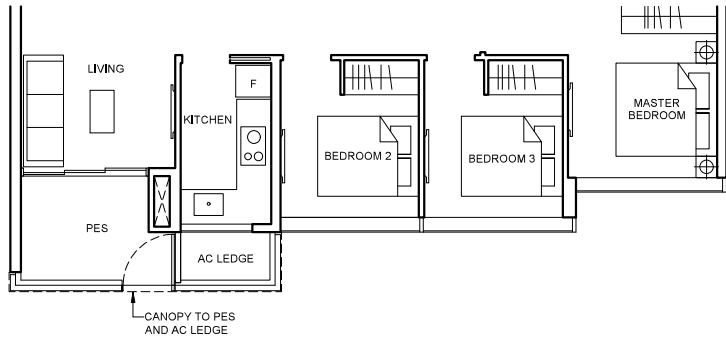
# 3 BEDROOM DELUXE

## Type C1a2(pd)

88 sqm (947 sqft)

**Block 38**  
#01-76

**MIRRORED**  
**Block 36**  
#01-57\*

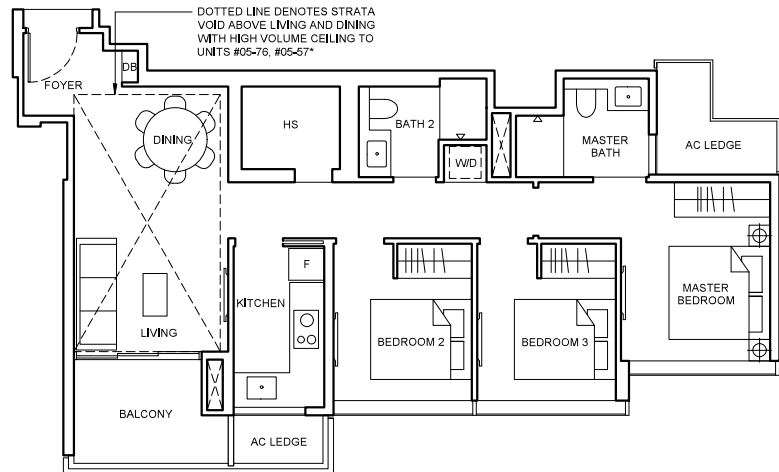


## Type C1a2

88 sqm (947 sqft)

**Block 38**  
#02-76 To #04-76

**MIRRORED**  
**Block 36**  
#02-57\* To #04-57\*



## Type C1a2(PH)

104 sqm (1119 sqft)

Strata void area of 16 sqm / 172 sqft above living and dining with high volume ceiling of 4590mm H.

Balcony at top floor is provided with canopy.

**Block 38**  
#05-76

**MIRRORED**  
**Block 36**  
#05-57\*

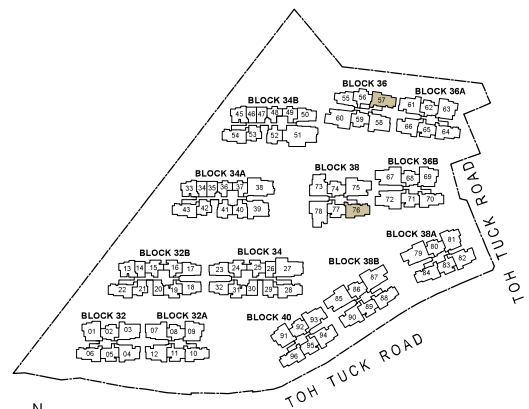
### LEGEND

[W/D] WASHER CUM DRYER

[F] FRIDGE

### Note

- Area includes AC ledge, balcony and private enclosed space (PES), strata void (where applicable).
- The above plans and illustrations are subject to change as maybe required or approved by the relevant authorities.
- All floor areas are approximate only and subject to final survey.
- Please refer to the key plan for orientation.
- High volume space in (pd) unit does not constitute strata area.
- Service voids are excluded from strata area.
- RC ledge and / or RC trellis are excluded from strata area.



KEY PLAN IS NOT DRAWN TO SCALE.

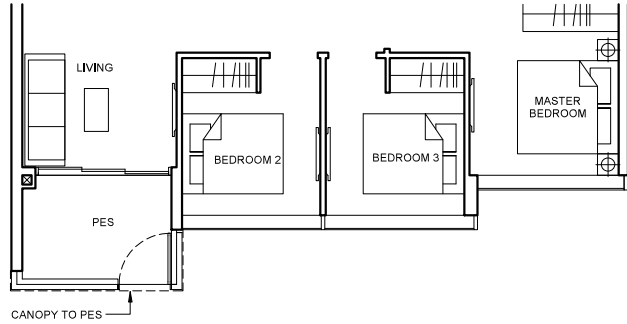
# 3 BEDROOM DELUXE

## Type C1b(pd)

91 sqm (980 sqft)

**Block 36A**  
#01-61  
**Block 38A**  
#01-82  
**Block 40**  
#01-94

**MIRRORED**  
**Block 32A**  
#01-12\*  
**Block 36A**  
#01-66\*  
**Block 38B**  
#01-90\*  
**Block 40**  
#01-93\*

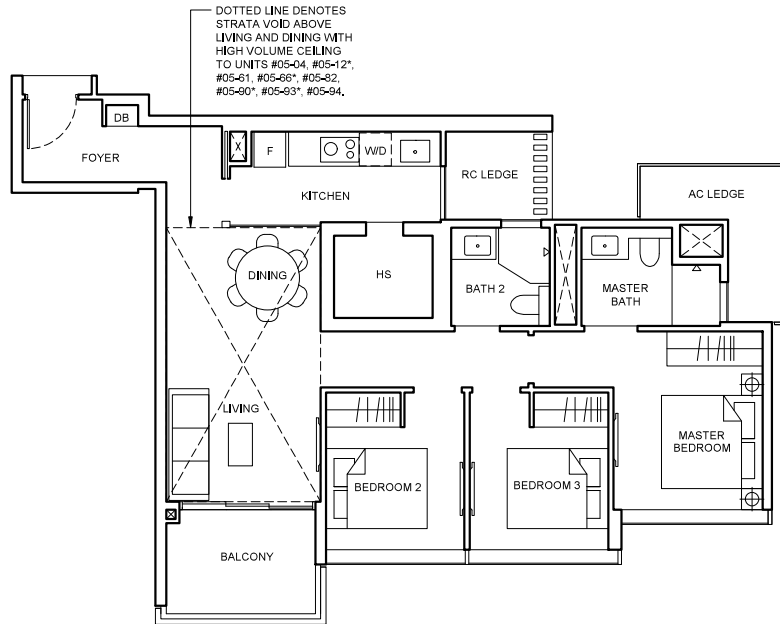


## Type C1b

91 sqm (980 sqft)

**Block 32**  
#02-04 To #04-04  
**Block 36A**  
#02-61 To #04-61  
**Block 38A**  
#02-82 To #04-82  
**Block 40**  
#02-94 To #04-94

**MIRRORED**  
**Block 32A**  
#02-12\* To #04-12\*  
**Block 36A**  
#02-66\* To #04-66\*  
**Block 38B**  
#02-90\* To #04-90\*  
**Block 40**  
#02-93\* To #04-93\*



## Type C1b(PH)

108 sqm (1163 sqft)

Strata void area of 17 sqm / 183 sqft above living and dining with high volume ceiling of 4590mm H.

Balcony at top floor is provided with canopy.

**Block 32**  
#05-04  
**Block 36A**  
#05-61  
**Block 38A**  
#05-82  
**Block 40**  
#05-94

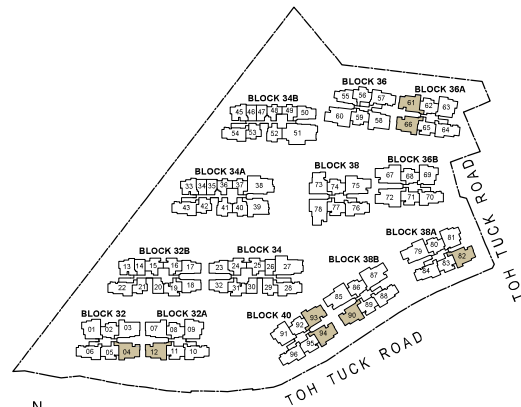
**MIRRORED**  
**Block 32A**  
#05-12\*  
**Block 36A**  
#05-66\*  
**Block 38B**  
#05-90\*  
**Block 40**  
#05-93\*

## LEGEND

[W/D] WASHER CUM DRYER      [F] FRIDGE

## Note

- Area includes AC ledge, balcony and private enclosed space (PES), strata void (where applicable).
- The above plans and illustrations are subject to change as may be required or approved by the relevant authorities.
- All floor areas are approximate only and subject to final survey.
- Please refer to the key plan for orientation.
- High volume space in (pd) unit does not constitute strata area.
- Service voids are excluded from strata area.
- RC ledge and / or RC trellis are excluded from strata area.



KEY PLAN IS NOT DRAWN TO SCALE.

# 3 BEDROOM DELUXE

## Type C1c(p) 90 sqm (969 sqft)

**Block 34A**  
#01-43  
**Block 34B**  
#01-54



## Type C1c 90 sqm (969 sqft)

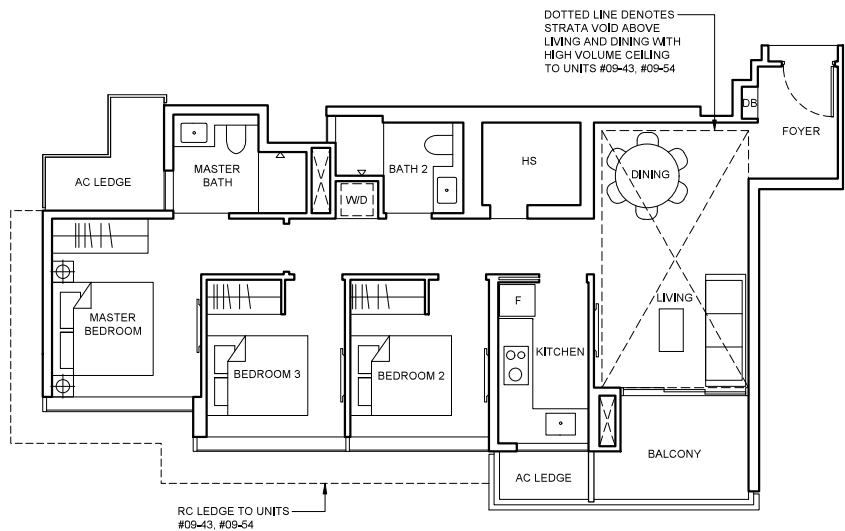
**Block 34A**  
#02-43 To #08-43  
**Block 34B**  
#02-54 To #08-54

## Type C1c(PH) 106 sqm (1141 sqft)

Strata void area of 16 sqm / 172 sqft above living and dining with high volume ceiling of 4415mm H.

Balcony at top floor is provided with canopy.

**Block 34A**  
#09-43  
**Block 34B**  
#09-54



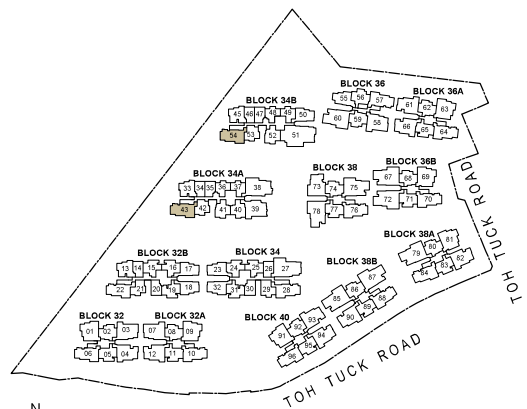
### LEGEND

[W/D] WASHER CUM DRYER

[F] FRIDGE

### Note

- Area includes AC ledge, balcony and private enclosed space (PES), strata void (where applicable).
- The above plans and illustrations are subject to change as may be required or approved by the relevant authorities.
- All floor areas are approximate only and subject to final survey.
- Please refer to the key plan for orientation.
- High volume space in (pd) unit does not constitute strata area.
- Service voids are excluded from strata area.
- RC ledge and / or RC trellis are excluded from strata area.



KEY PLAN IS NOT DRAWN TO SCALE.

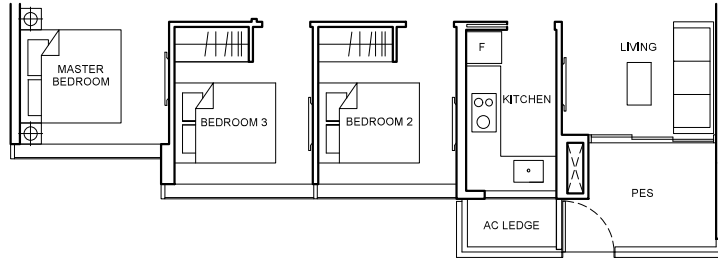
# 3 BEDROOM DELUXE

## Type C1d(p)

91 sqm (980 sqft)

**Block 32B**  
#01-22

**MIRRORED**  
**Block 34**  
#01-28\*



## Type C1d

91 sqm (980 sqft)

**Block 32B**  
#02-22 To #08-22

**MIRRORED**  
**Block 34**  
#02-28\* To #09-28\*

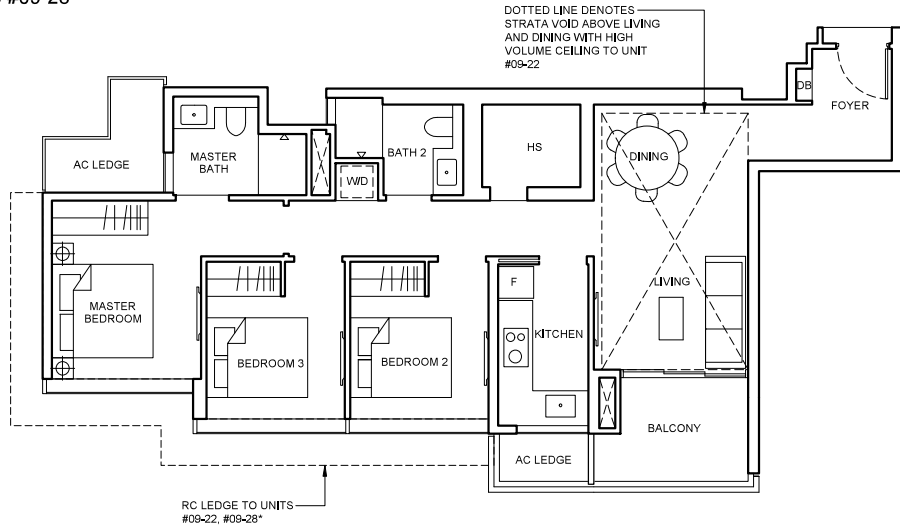
## Type C1d(PH)

107 sqm (1152 sqft)

Strata void area of 16 sqm / 172 sqft above living and dining with high volume ceiling of 4415mm H.

Balcony at top floor is provided with canopy.

**Block 32B**  
#09-22



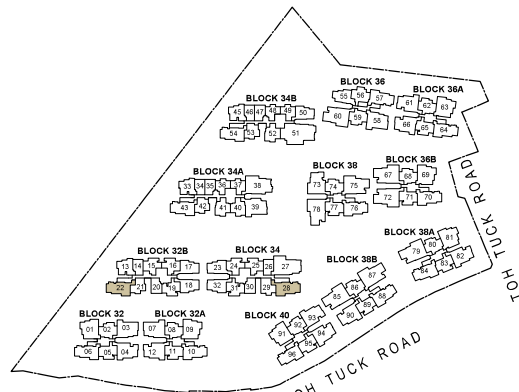
### LEGEND

[W/D] WASHER CUM DRYER      [F] FRIDGE

### Note

- Area includes AC ledge, balcony and private enclosed space (PES), strata void (where applicable).
- The above plans and illustrations are subject to change as maybe required or approved by the relevant authorities.
- All floor areas are approximate only and subject to final survey.
- Please refer to the key plan for orientation.
- High volume space in (pd) unit does not constitute strata area.
- Service voids are excluded from strata area.
- RC ledge and / or RC trellis are excluded from strata area.

0 1 2 3 5M



N  
KEY PLAN IS NOT DRAWN TO SCALE.

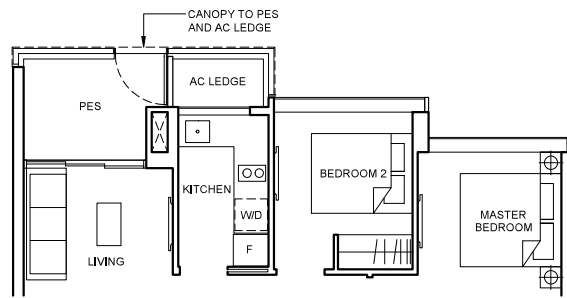
# 3 BEDROOM DUAL KEY

## Type C2(DK)(pd)

96 sqm (1033 sqft)

**Block 36A**  
#01-63  
**Block 36B**  
#01-69  
**Block 38A**  
#01-81

**MIRRORED**  
**Block 32**  
#01-01\*  
**Block 40**  
#01-91\*

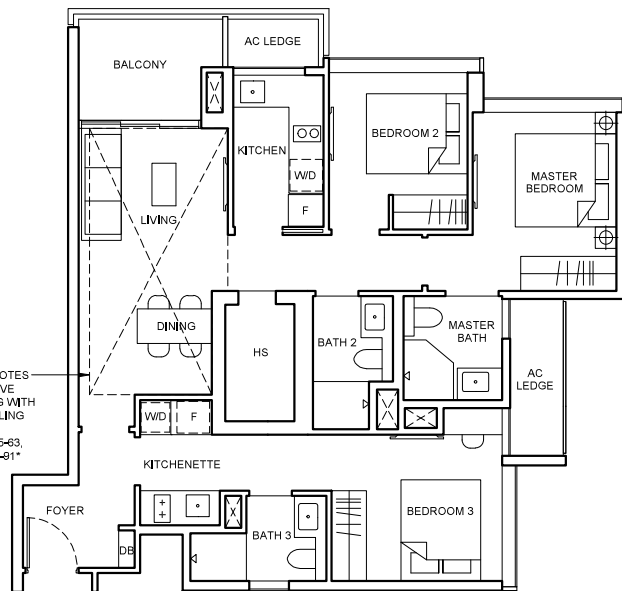


## Type C2(DK)

96 sqm (1033 sqft)

**Block 32A**  
#02-09 To #04-09  
**Block 36A**  
#02-63 To #04-63  
**Block 36B**  
#02-69 To #04-69  
**Block 38A**  
#02-81 To #04-81

**MIRRORED**  
**Block 32**  
#02-01\* To #04-01\*  
**Block 40**  
#02-91\* To #04-91\*



DOTTED LINE DENOTES STRATA VOID ABOVE LIVING AND DINING WITH HIGH VOLUME CEILING TO UNITS #05-01\*, #05-09, #05-63, #05-69, #05-81, #05-91\*

## Type C2(DK)(PH)

111 sqm (1195 sqft)

Strata void area of 15 sqm / 162 sqft above living and dining with high volume ceiling of 4590mm H.

Balcony at top floor is provided with canopy.

**Block 32A**  
#05-09  
**Block 36A**  
#05-63  
**Block 36B**  
#05-69  
**Block 38A**  
#05-81

**MIRRORED**  
**Block 32**  
#05-01\*  
**Block 40**  
#05-91\*

## LEGEND

[W/D] WASHER CUM DRYER

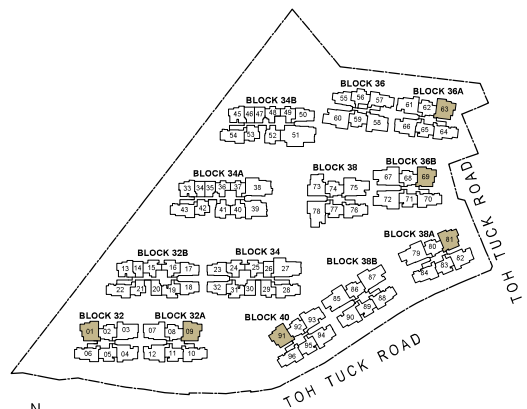
[F] INTEGRATED FRIDGE

[F] FRIDGE

## Note

- Area includes AC ledge, balcony and private enclosed space (PES), strata void (where applicable).
- The above plans and illustrations are subject to change as maybe required or approved by the relevant authorities.
- All floor areas are approximate only and subject to final survey.
- Please refer to the key plan for orientation.
- High volume space in (pd) unit does not constitute strata area.
- Service voids are excluded from strata area.
- RC ledge and / or RC trellis are excluded from strata area.

0 1 2 3 5M

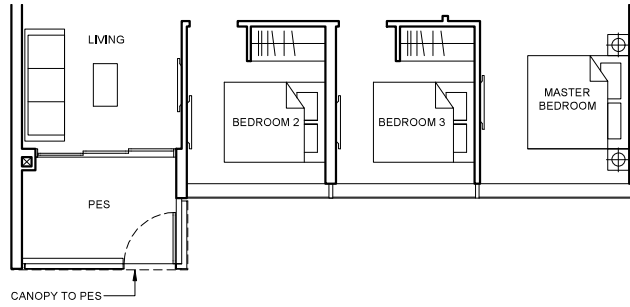


KEY PLAN IS NOT DRAWN TO SCALE.

# 3 BEDROOM PREMIUM

## Type C3a(pd) 98 sqm (1055 sqft)

Block 36  
#01-58



## Type C3a 98 sqm (1055 sqft)

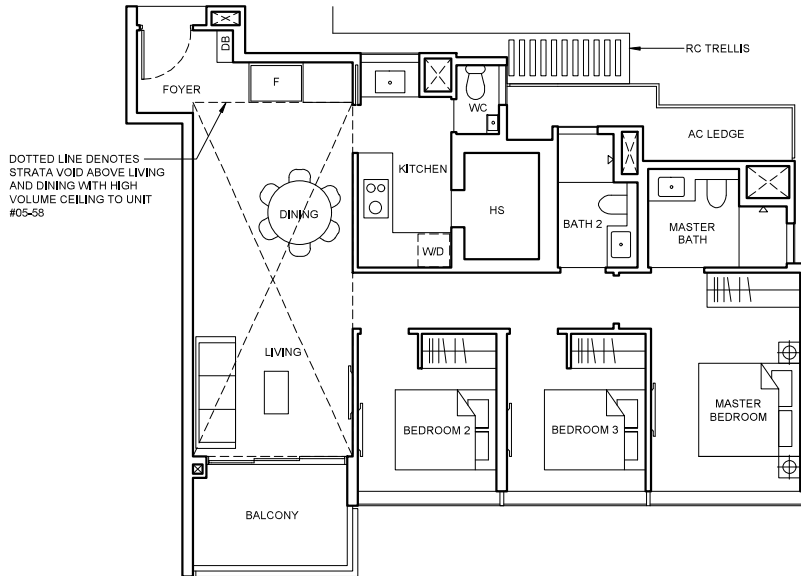
Block 36  
#02-58 To #04-58

## Type C3a(PH) 121 sqm (1302 sqft)

Strata void area of 23 sqm / 247 sqft above living and dining with high volume ceiling of 4590mm H.

Balcony at top floor is provided with canopy.

Block 36  
#05-58

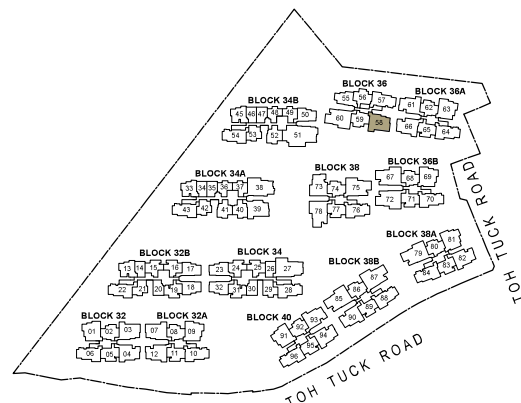


### LEGEND

[W/D] WASHER CUM DRYER      [F] FRIDGE

### Note

- Area includes AC ledge, balcony and private enclosed space (PES), strata void (where applicable).
- The above plans and illustrations are subject to change as maybe required or approved by the relevant authorities.
- All floor areas are approximate only and subject to final survey.
- Please refer to the key plan for orientation.
- High volume space in (pd) unit does not constitute strata area.
- Service voids are excluded from strata area.
- RC ledge and / or RC trellis are excluded from strata area.



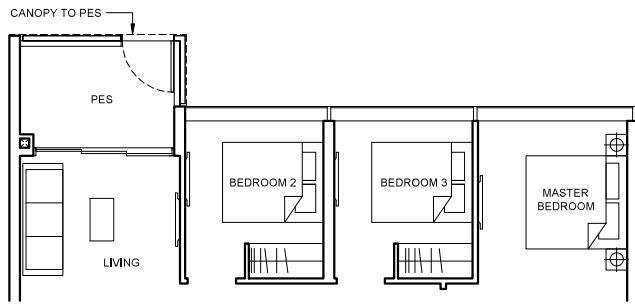
KEY PLAN IS NOT DRAWN TO SCALE.



# 3 BEDROOM PREMIUM

## Type C3b(pd) 100 sqm (1076 sqft)

**Block 32**  
#01-03



## Type C3b 100 sqm (1076 sqft)

**Block 32**  
#02-03 To #04-03

**MIRRORED  
Block 32A**  
#02-07\* To #04-07\*

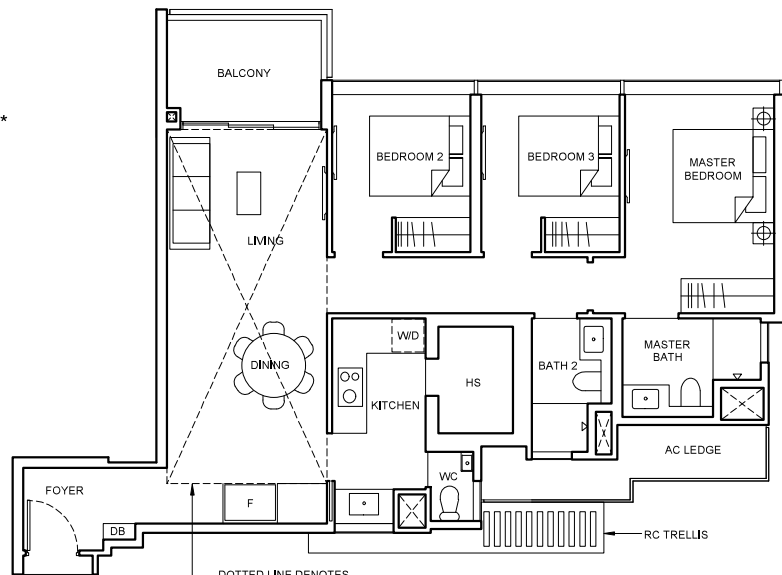
## Type C3b(PH) 123 sqm (1324 sqft)

Strata void area of 23 sqm / 248 sqft above living and dining with high volume ceiling of 4590mm H.

Balcony at top floor is provided with canopy.

**Block 32**  
#05-03

**MIRRORED  
Block 32A**  
#05-07\*



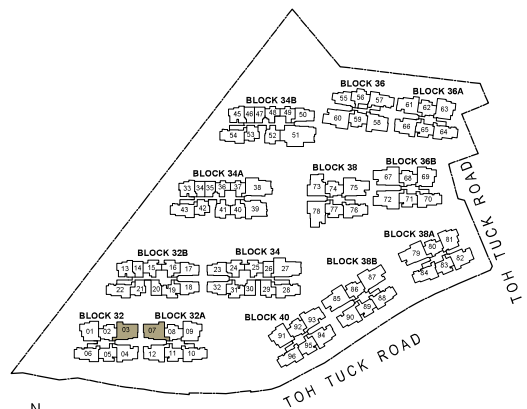
DOTTED LINE DENOTES STRATA VOID ABOVE LIVING AND DINING WITH HIGH VOLUME CEILING TO UNITS #05-03, #05-07\*

### LEGEND

[WD] WASHER CUM DRYER      [F] FRIDGE

### Note

- Area includes AC ledge, balcony and private enclosed space (PES), strata void (where applicable).
- The above plans and illustrations are subject to change as maybe required or approved by the relevant authorities.
- All floor areas are approximate only and subject to final survey.
- Please refer to the key plan for orientation.
- High volume space in (pd) unit does not constitute strata area.
- Service voids are excluded from strata area.
- RC ledge and / or RC trellis are excluded from strata area.

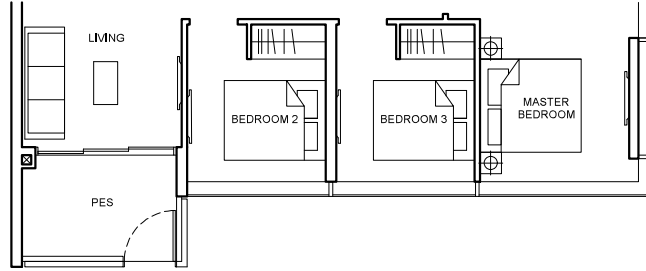


KEY PLAN IS NOT DRAWN TO SCALE.

# 3 BEDROOM PREMIUM

## Type C3c(p) 101 sqm (1087 sqft)

**Block 34A**  
#01-39



## Type C3c 101 sqm (1087 sqft)

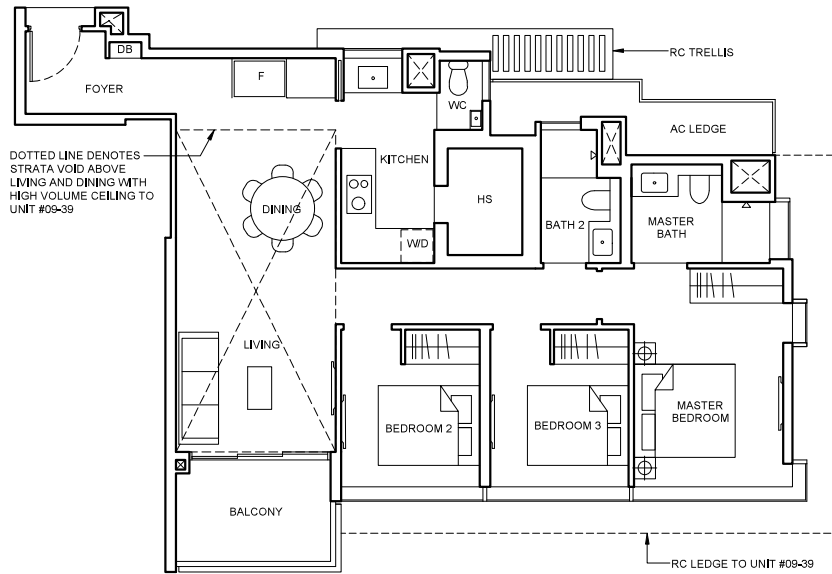
**Block 34A**  
#02-39 To #08-39

## Type C3c(PH) 122 sqm (1313 sqft)

Strata void area of 21 sqm / 226 sqft above living and dining with high volume ceiling of 4415mm H.

Balcony at top floor is provided with canopy.

**Block 34A**  
#09-39

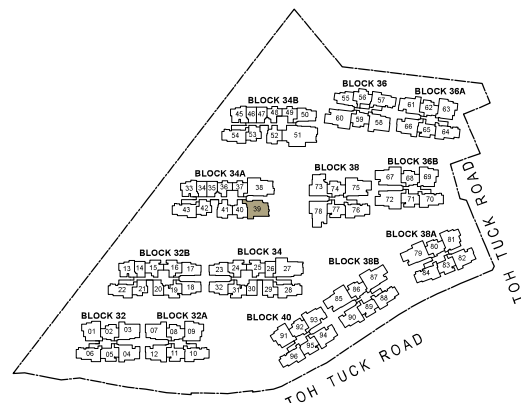


### LEGEND

[W/D] WASHER CUM DRYER      [F] FRIDGE

### Note

- Area includes AC ledge, balcony and private enclosed space (PES), strata void (where applicable).
- The above plans and illustrations are subject to change as maybe required or approved by the relevant authorities.
- All floor areas are approximate only and subject to final survey.
- Please refer to the key plan for orientation.
- High volume space in (pd) unit does not constitute strata area.
- Service voids are excluded from strata area.
- RC ledge and / or RC trellis are excluded from strata area.

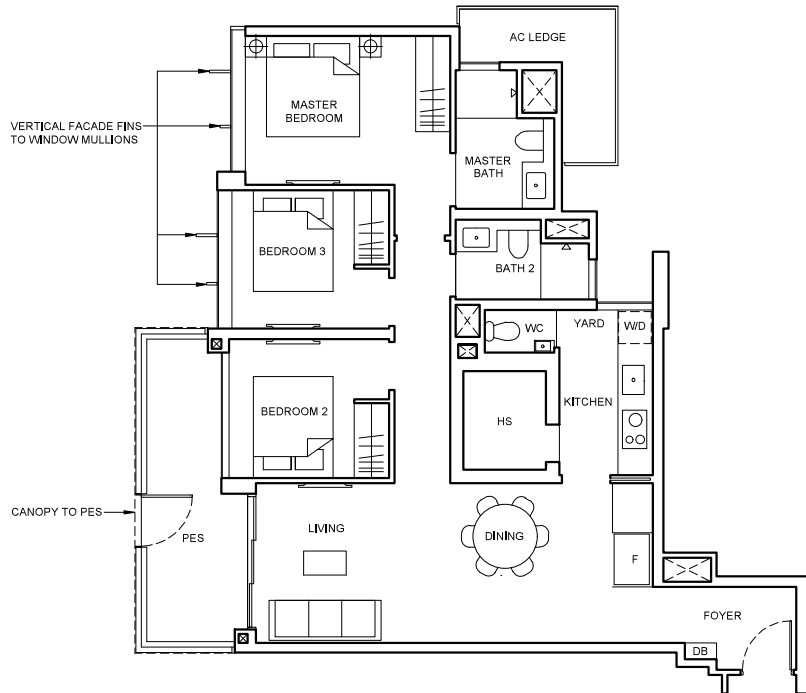


KEY PLAN IS NOT DRAWN TO SCALE.

# 3 BEDROOM PREMIUM

**Type C4(pd)**  
103 sqm (1109 sqft)

**Block 38**  
#01-73

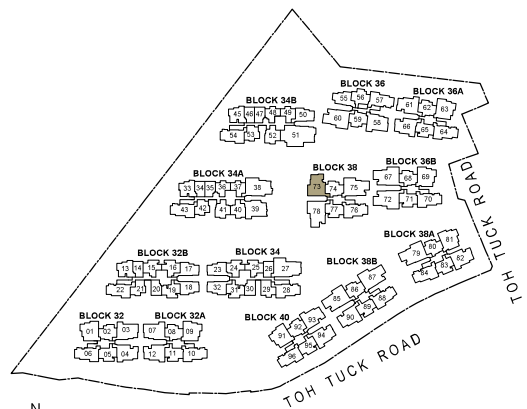


## LEGEND

[W/D] WASHER CUM DRYER      [F] FRIDGE

## Note

- Area includes AC ledge, balcony and private enclosed space (PES), strata void (where applicable).
- The above plans and illustrations are subject to change as maybe required or approved by the relevant authorities.
- All floor areas are approximate only and subject to final survey.
- Please refer to the key plan for orientation.
- High volume space in (pd) unit does not constitute strata area.
- Service voids are excluded from strata area.
- RC ledge and / or RC trellis are excluded from strata area.



KEY PLAN IS NOT DRAWN TO SCALE.

# 3 BEDROOM PREMIUM

## Type C4

103 sqm (1109 sqft)

### Block 38

#02-73 To #04-73

## Type C4(PH)

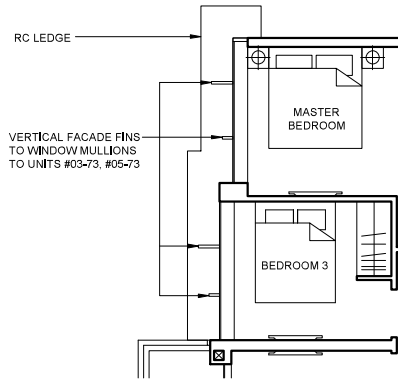
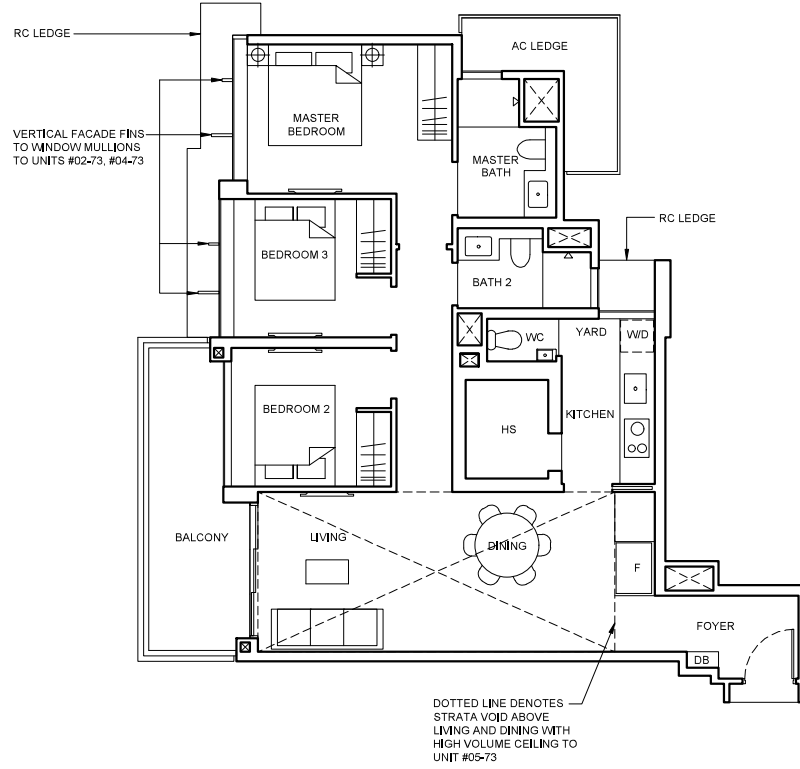
126 sqm (1356 sqft)

Strata void area of 23 sqm / 247 sqft above living and dining with high volume ceiling of 4590mm H.

Balcony at top floor is provided with canopy.

### Block 38

#05-73



Applicable to units #03-73, #05-73

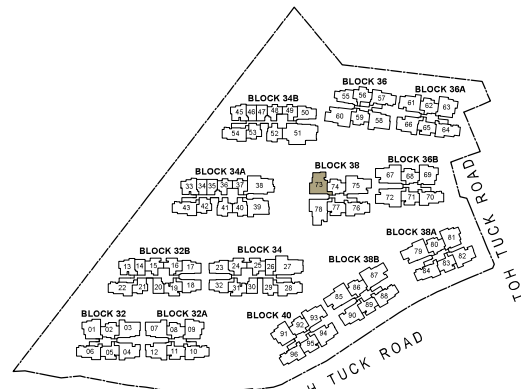
## LEGEND

[W.D.] WASHER CUM DRYER [F] FRIDGE

## Note

- Area includes AC ledge, balcony and private enclosed space (PES), strata void (where applicable).
- The above plans and illustrations are subject to change as maybe required or approved by the relevant authorities.
- All floor areas are approximate only and subject to final survey.
- Please refer to the key plan for orientation.
- High volume space in (pd) unit does not constitute strata area.
- Service voids are excluded from strata area.
- RC ledge and / or RC trellis are excluded from strata area.

0 1 2 3 5M



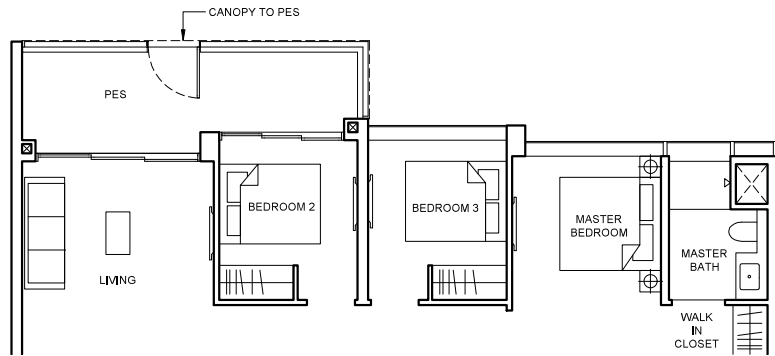
KEY PLAN IS NOT DRAWN TO SCALE.

# 4 BEDROOM PREMIUM

## Type D1a(pd)

119 sqm (1281 sqft)

**Block 38**  
#01-75  
**Block 38B**  
#01-87



## Type D1a

119 sqm (1281 sqft)

**Block 38**  
#02-75 To #04-75  
**Block 38B**  
#02-87 To #04-87

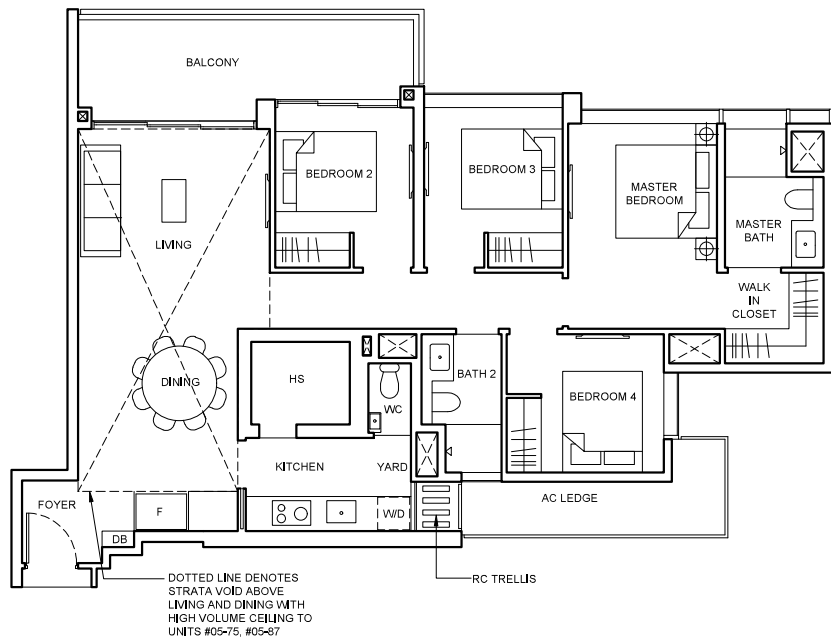
## Type D1a(PH)

145 sqm (1561 sqft)

Strata void area of 26 sqm / 280 sqft above living and dining with high volume ceiling of 4590mm H.

Balcony at top floor is provided with canopy.

**Block 38**  
#05-75  
**Block 38B**  
#05-87

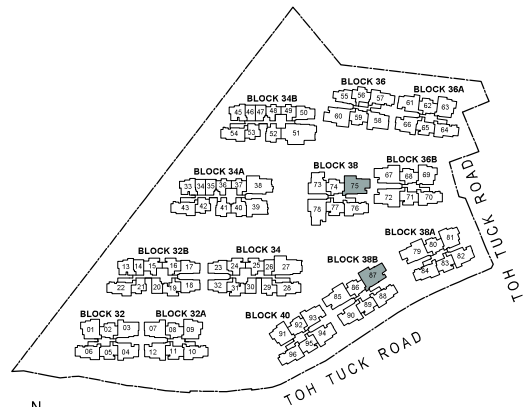


### LEGEND

[W/D] WASHER CUM DRYER [F] FRIDGE

### Note

- Area includes AC ledge, balcony and private enclosed space (PES), strata void (where applicable).
- The above plans and illustrations are subject to change as maybe required or approved by the relevant authorities.
- All floor areas are approximate only and subject to final survey.
- Please refer to the key plan for orientation.
- High volume space in (pd) unit does not constitute strata area.
- Service voids are excluded from strata area.
- RC ledge and / or RC trellis are excluded from strata area.



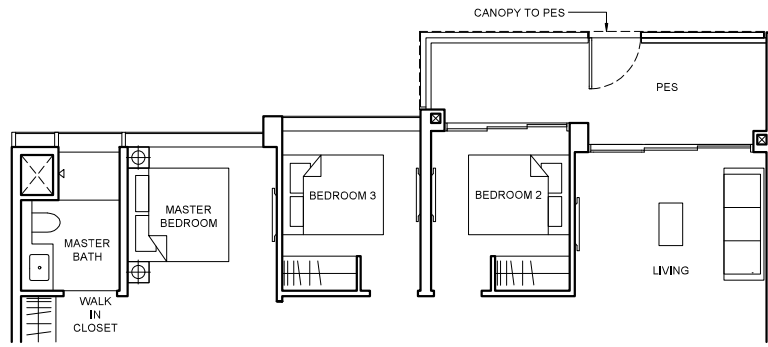
KEY PLAN IS NOT DRAWN TO SCALE.

# 4 BEDROOM PREMIUM

## Type D1b(pd) 121 sqm (1302 sqft)

- Block 36B**  
#01-67
- Block 38A**  
#01-79
- Block 38B**  
#01-85

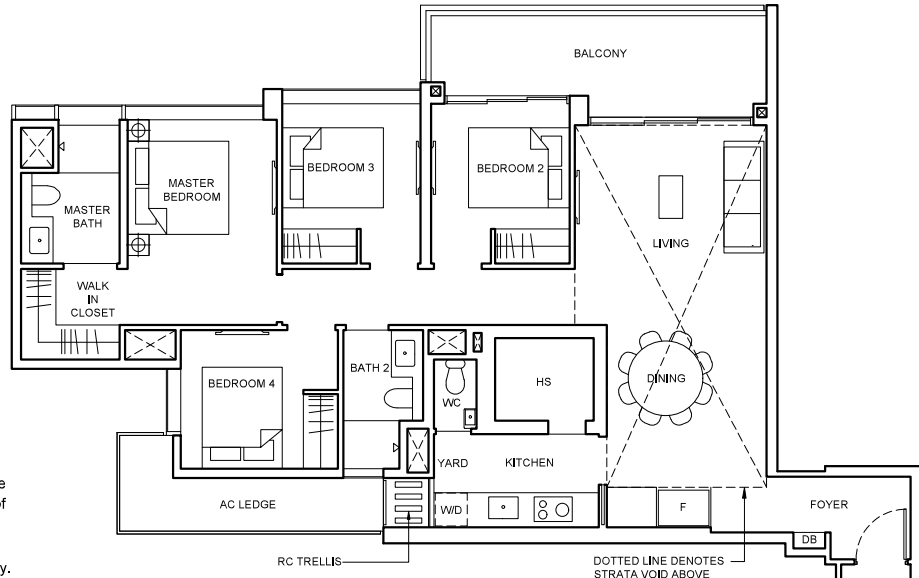
- MIRRORED**
- Block 36**  
#01-60\*
- Block 36B**  
#01-72\*



## Type D1b 121 sqm (1302 sqft)

- Block 36B**  
#02-67 To #04-67
- Block 38A**  
#02-79 To #04-79
- Block 38B**  
#02-85 To #04-85

- MIRRORED**
- Block 36**  
#02-60\* To #04-60\*
- Block 36B**  
#02-72\* To #04-72\*



## Type D1b(PH) 147 sqm (1582 sqft)

Strata void area of 26 sqm / 280 sqft above living and dining with high volume ceiling of 4590mm H.

Balcony at top floor is provided with canopy.

- Block 36B**  
#05-67
- Block 38A**  
#05-79
- Block 38B**  
#05-85

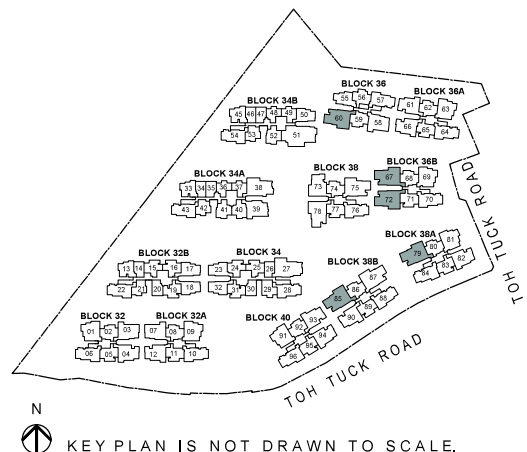
- MIRRORED**
- Block 36**  
#05-60\*
- Block 36B**  
#05-72\*

### LEGEND

- W/D WASHER CUM DRYER
- F FRIDGE

### Note

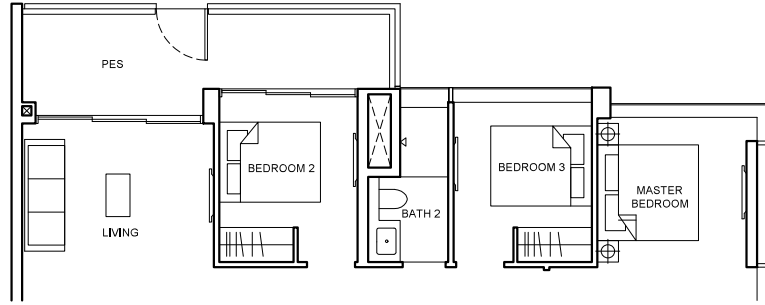
- Area includes AC ledge, balcony and private enclosed space (PES), strata void (where applicable).
- The above plans and illustrations are subject to change as maybe required or approved by the relevant authorities.
- All floor areas are approximate only and subject to final survey.
- Please refer to the key plan for orientation.
- High volume space in (pd) unit does not constitute strata area.
- Service voids are excluded from strata area.
- RC ledge and / or RC trellis are excluded from strata area.



# 4 BEDROOM PREMIUM

## Type D1c(p) 126 sqm (1356 sqft)

**Block 34A**  
#01-38



## Type D1c 126 sqm (1356 sqft)

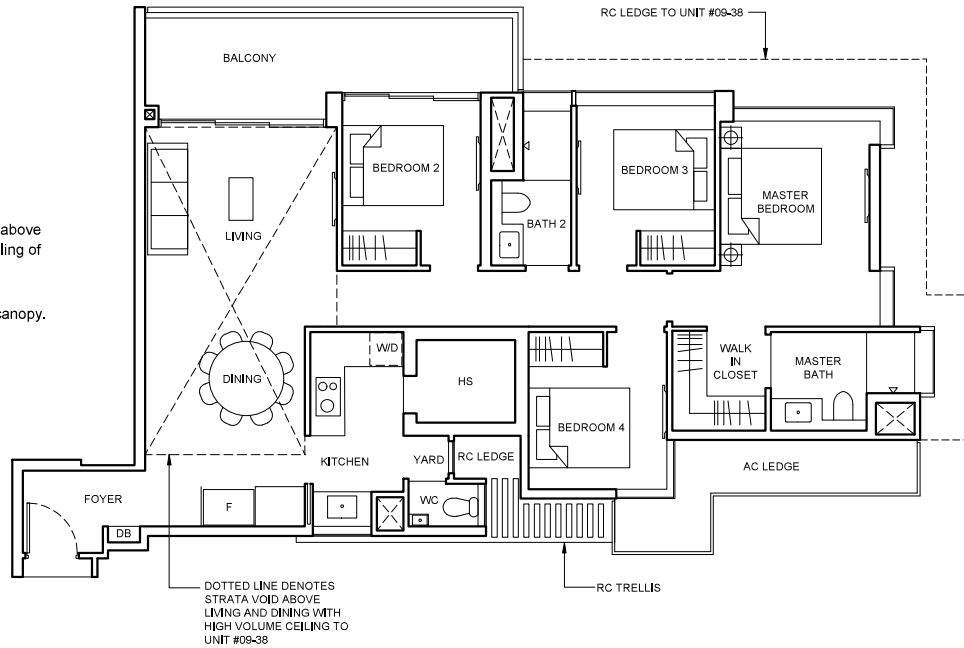
**Block 34A**  
#02-38 To #08-38

## Type D1c(PH) 150 sqm (1615 sqft)

Strata void area of 24 sqm / 259 sqft above living and dining with high volume ceiling of 4415mm H.

Balcony at top floor is provided with canopy.

**Block 34A**  
#09-38

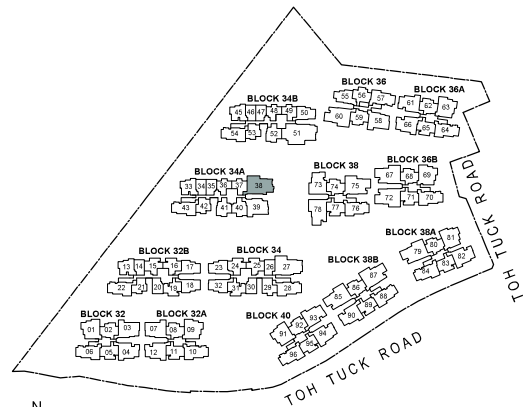


### LEGEND

[W/D] WASHER CUM DRYER      [F] FRIDGE

### Note

- Area includes AC ledge, balcony and private enclosed space (PES), strata void (where applicable).
- The above plans and illustrations are subject to change as maybe required or approved by the relevant authorities.
- All floor areas are approximate only and subject to final survey.
- Please refer to the key plan for orientation.
- High volume space in (pd) unit does not constitute strata area.
- Service voids are excluded from strata area.
- RC ledge and / or RC trellis are excluded from strata area.

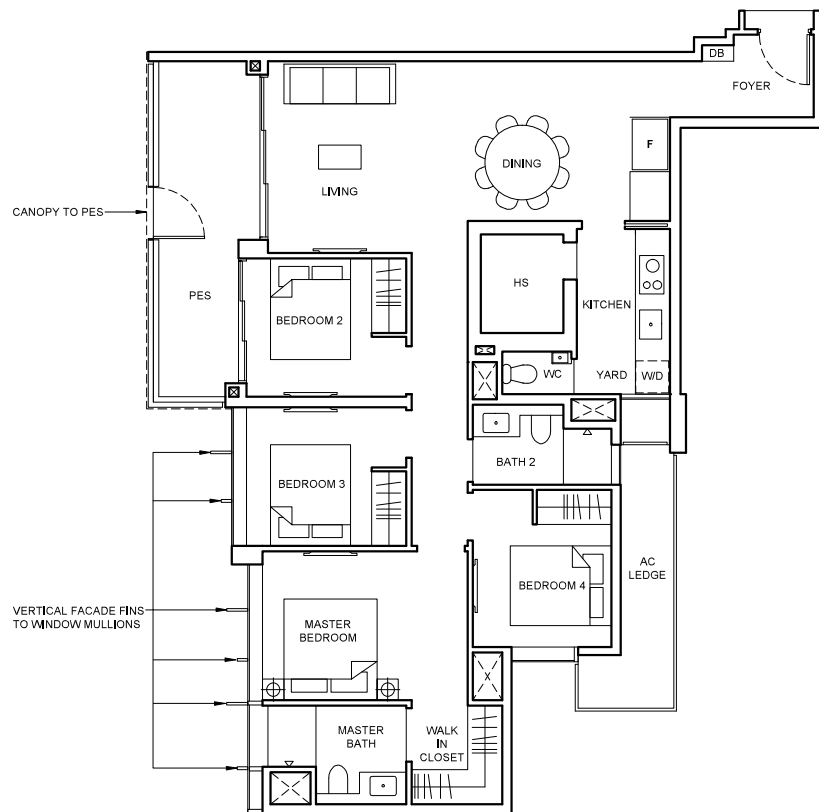


KEY PLAN IS NOT DRAWN TO SCALE.

# 4 BEDROOM PREMIUM

**Type D2(pd)**  
121 sqm (1302 sqft)

**Block 38**  
#01-78



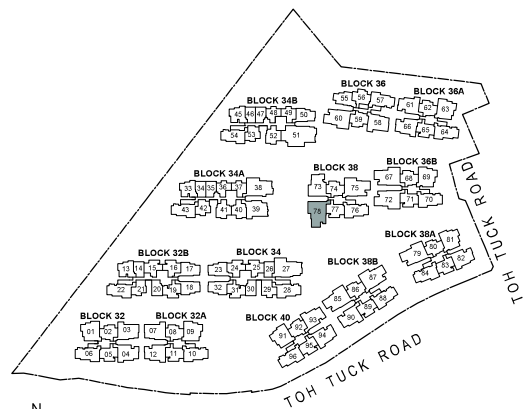
## LEGEND

[W/D] WASHER CUM DRYER      [F] FRIDGE

## Note

- Area includes AC ledge, balcony and private enclosed space (PES), strata void (where applicable).
- The above plans and illustrations are subject to change as maybe required or approved by the relevant authorities.
- All floor areas are approximate only and subject to final survey.
- Please refer to the key plan for orientation.
- High volume space in (pd) unit does not constitute strata area.
- Service voids are excluded from strata area.
- RC ledge and / or RC trellis are excluded from strata area.

0 1 2 3 5M



N  
KEY PLAN IS NOT DRAWN TO SCALE.



# 4 BEDROOM PREMIUM

## Type D2

121 sqm (1302 sqft)

### Block 38

#02-78 To #04-78

## Type D2(PH)

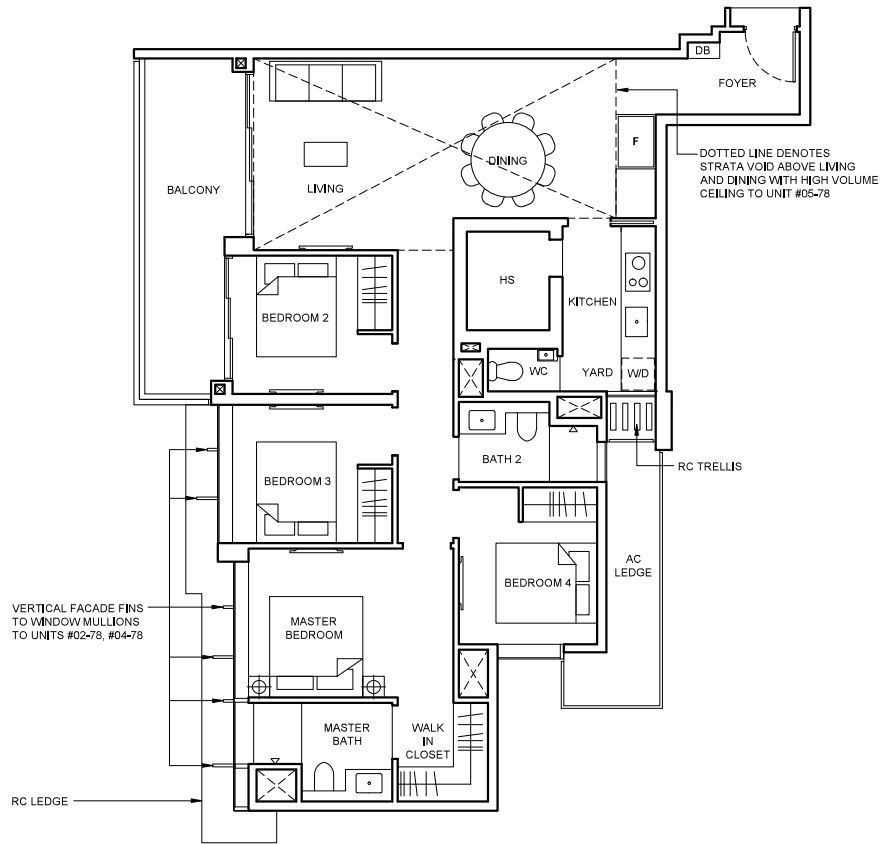
146 sqm (1572 sqft)

Strata void area of 25 sqm / 270 sqft above living and dining with high volume ceiling of 4590mm H.

Balcony at top floor is provided with canopy.

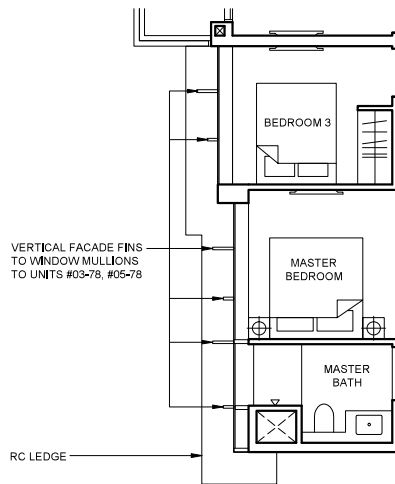
### Block 38

#05-78



VERTICAL FACADE FINS TO WINDOW MULLIONS TO UNITS #02-78, #04-78

RC LEDGE



VERTICAL FACADE FINS TO WINDOW MULLIONS TO UNITS #03-78, #05-78

RC LEDGE

Applicable to units #03-78, #05-78

## LEGEND

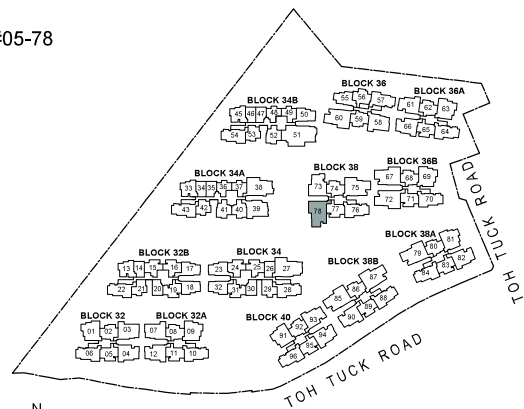
[W/D] WASHER CUM DRYER

[F] FRIDGE

## Note

- Area includes AC ledge, balcony and private enclosed space (PES), strata void (where applicable).
- The above plans and illustrations are subject to change as maybe required or approved by the relevant authorities.
- All floor areas are approximate only and subject to final survey.
- Please refer to the key plan for orientation.
- High volume space in (pd) unit does not constitute strata area.
- Service voids are excluded from strata area.
- RC ledge and / or RC trellis are excluded from strata area.

0 1 2 3 5M

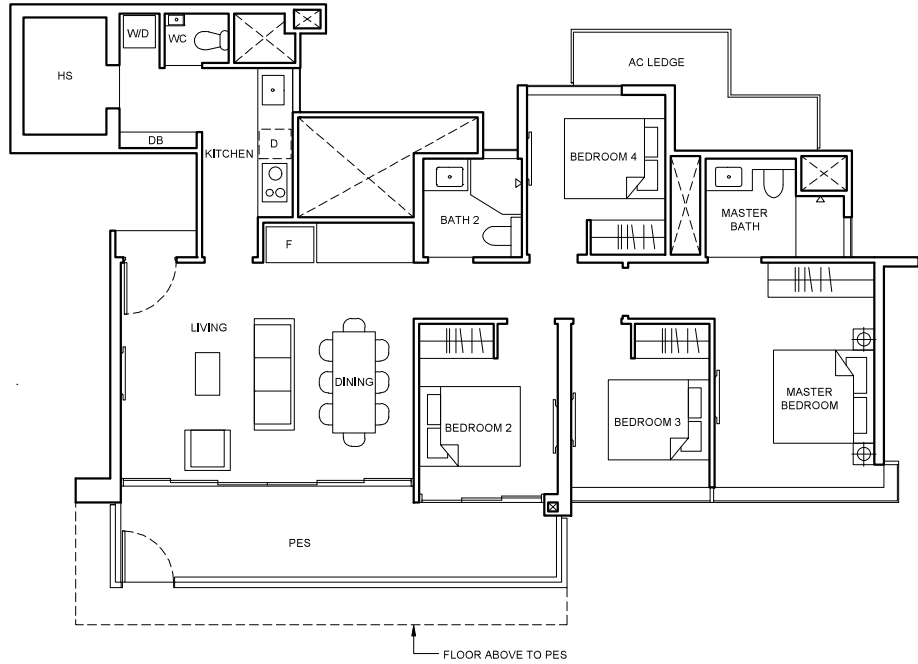


KEY PLAN IS NOT DRAWN TO SCALE.

# 4 BEDROOM PREMIUM

**Type D2(p)**  
122 sqm (1313 sqft)

**Block 34B**  
#01-51

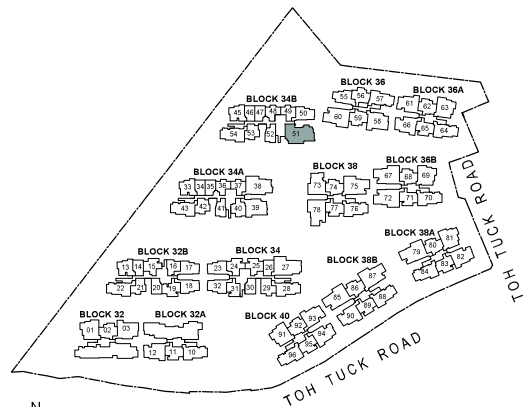


## LEGEND



## Note

- Area includes AC ledge, balcony and private enclosed space (PES), strata void (where applicable).
- The above plans and illustrations are subject to change as maybe required or approved by the relevant authorities.
- All floor areas are approximate only and subject to final survey.
- Please refer to the key plan for orientation.
- High volume space in (pd) unit does not constitute strata area.
- Service voids are excluded from strata area.
- RC ledge and / or RC trellis are excluded from strata area.



N  
KEY PLAN IS NOT DRAWN TO SCALE.



# 5 BEDROOM SUITE

## Type E

175 sqm (1884 sqft)

Balcony at top floor is provided with canopy.

### Block 34B

#02-51 To #09-51

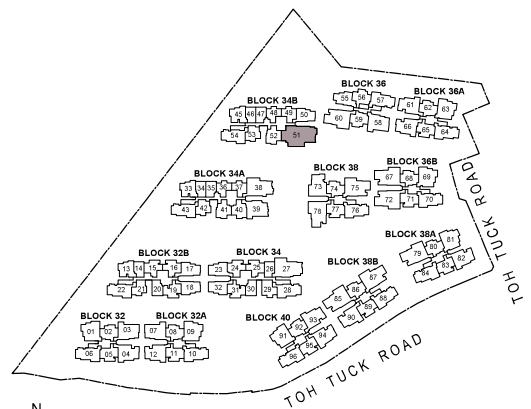


### LEGEND

W+D WASHER AND DRYER	INTEGRATED FRIDGE	FRIDGE
DISHWASHER		

### Note

- Area includes AC ledge, balcony and private enclosed space (PES), strata void (where applicable).
- The above plans and illustrations are subject to change as maybe required or approved by the relevant authorities.
- All floor areas are approximate only and subject to final survey.
- Please refer to the key plan for orientation.
- High volume space in (pd) unit does not constitute strata area.
- Service voids are excluded from strata area.
- RC ledge and / or RC trellis are excluded from strata area.



KEY PLAN IS NOT DRAWN TO SCALE.