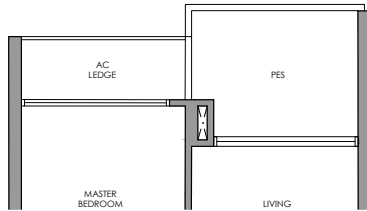
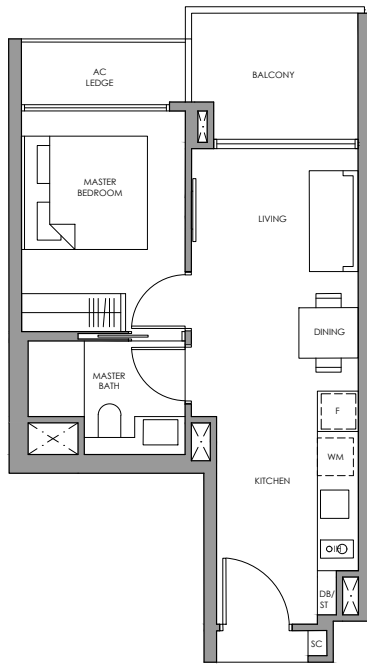


1-Bedroom

Type A1a(p)



Type A1a



- | | |
|----------------------------|-------|
| Fridge | F |
| Gas Hob | GH |
| Shoe Cabinet | SC |
| Washer cum Dryer | WM |
| Distribution Board / Store | DB/ST |



Type A1a(p)

45 sq m / 484 sq ft
Inclusive of 6 sq m PES
& 3 sq m AC Ledge

- | | |
|----------|----------|
| Block 6 | Block 14 |
| #01-13 | #01-46 * |
| #01-22 * | #01-51 |
| | #01-52 * |

- | | |
|----------|----------|
| Block 12 | Block 16 |
| #01-35 | #01-53 |
| #01-45 * | #01-54 * |
| | #01-60 |



* Mirror Image ^ High Ceiling

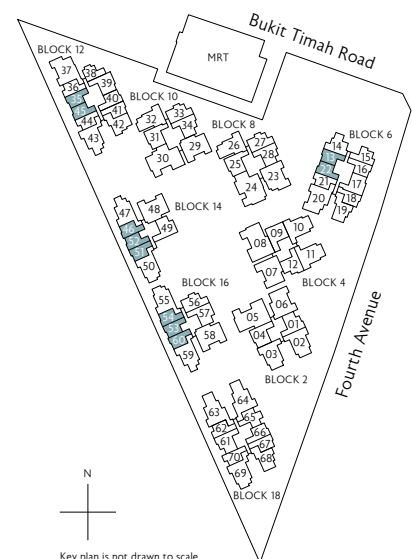


Type A1a

45 sq m / 484 sq ft
Inclusive of 6 sq m Balcony
& 3 sq m AC Ledge

- | | |
|--------------------|------------|
| Block 6 | Block 14 |
| #02-13 to #10-13 | #02-46 * ^ |
| #02-22 to #10-22 * | #02-51 ^ |
| | #02-52 * ^ |

- | | |
|--------------------|------------|
| Block 12 | Block 16 |
| #02-35 to #10-35 | #02-53 ^ |
| #02-45 to #10-45 * | #02-54 * ^ |
| | #02-60 ^ |

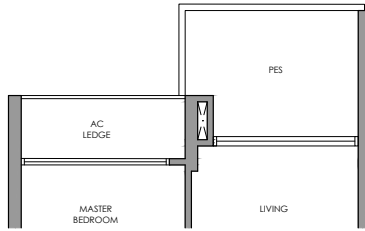


N
Key plan is not drawn to scale

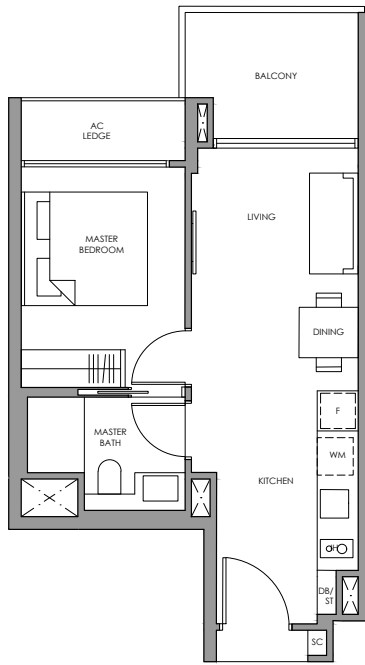
All plans are subject to change as may be required or approved by the relevant authorities. All floor areas are approximate measurements only and are subject to final survey. The balcony shall not be enclosed except with the approved balcony screen. For an illustration of the approved balcony screen, please refer to the diagram annexed hereto as "Annexure 1"

1-Bedroom

Type A1b(p)



Type A1b



- | | |
|----------------------------|-------|
| Fridge | F |
| Gas Hob | GH |
| Shoe Cabinet | SC |
| Washer cum Dryer | WM |
| Distribution Board / Store | DB/ST |



Type A1b(p)

45 sq m / 484 sq ft
Inclusive of 6 sq m PES
& 3 sq m AC Ledge

Block 6
#01-21

Block 12
#01-36 *
#01-44



Type A1b

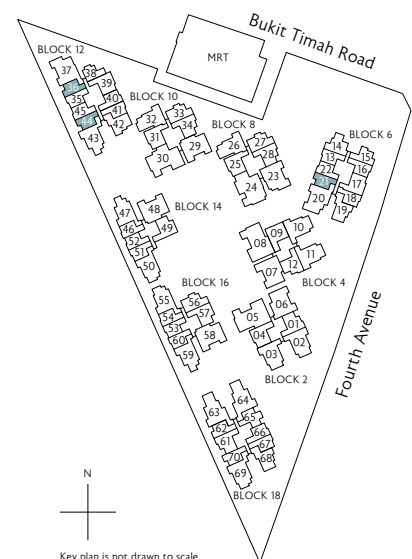
45 sq m / 484 sq ft
Inclusive of 6 sq m Balcony
& 3 sq m AC Ledge

Block 6
#02-21 to #10-21

Block 12
#02-36 to #10-36 *
#02-44 to #10-44



* Mirror Image ^ High Ceiling

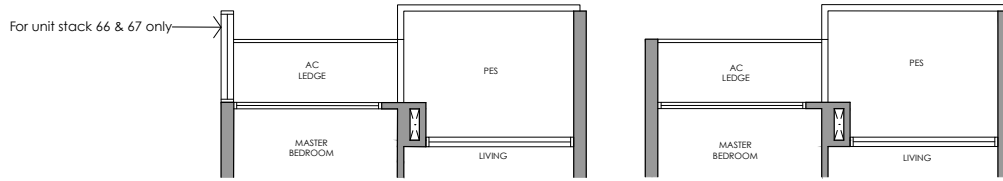


Key plan is not drawn to scale

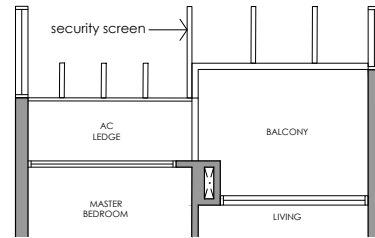
All plans are subject to change as may be required or approved by the relevant authorities. All floor areas are approximate measurements only and are subject to final survey. The balcony shall not be enclosed except with the approved balcony screen. For an illustration of the approved balcony screen, please refer to the diagram annexed hereto as "Annexure 1"

1-Bedroom

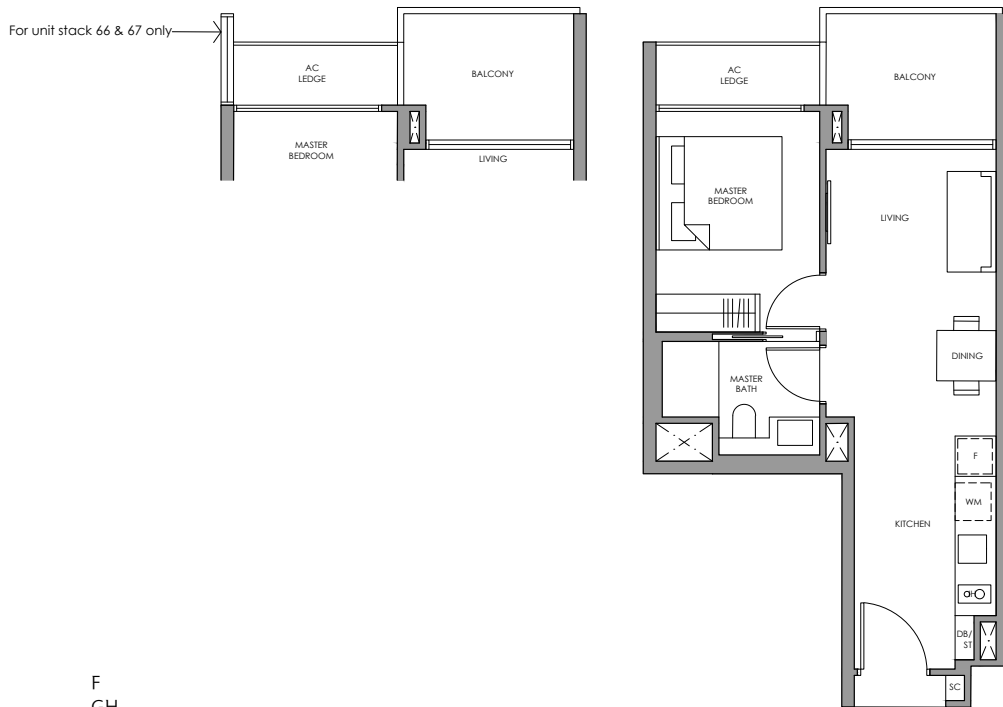
Type A1c(p)



Type A1c
WITH SECURITY SCREEN



Type A1c



- | | |
|----------------------------|-------|
| Fridge | F |
| Gas Hob | GH |
| Shoe Cabinet | SC |
| Washer cum Dryer | WM |
| Distribution Board / Store | DB/ST |



Type A1c(p)

47 sq m / 506 sq ft
Inclusive of 6 sq m PES
& 3 sq m AC Ledge

Block 12
#01-41 *

Block 18
#01-66
#01-67 *



* Mirror Image ^ High Ceiling



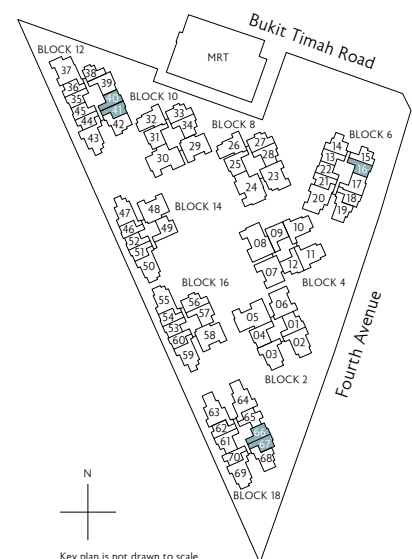
Type A1c

47 sq m / 506 sq ft
Inclusive of 6 sq m Balcony
& 3 sq m AC Ledge

Block 6
#02-16 to #06-16 *
#07-16 to #10-16 * (security screen)

Block 12
#02-40 to #10-40
#02-41 to #10-41 *

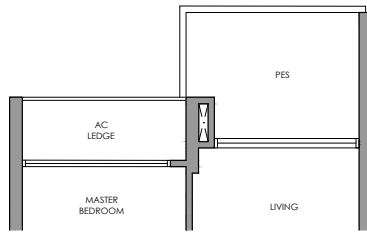
Block 18
#02-66 to #06-66
#02-67 to #06-67 *



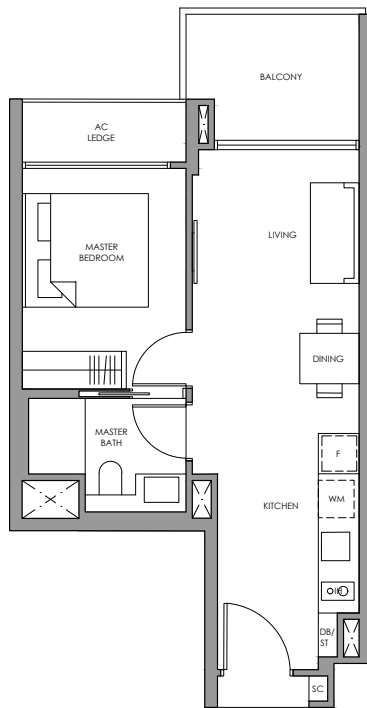
All plans are subject to change as may be required or approved by the relevant authorities. All floor areas are approximate measurements only and are subject to final survey. The balcony shall not be enclosed except with the approved balcony screen. For an illustration of the approved balcony screen, please refer to the diagram annexed hereto as "Annexure 1"

1-Bedroom

Type A1d(p)



Type A1d



- | | |
|----------------------------|-------|
| Fridge | F |
| Gas Hob | GH |
| Shoe Cabinet | SC |
| Washer cum Dryer | WM |
| Distribution Board / Store | DB/ST |



Type A1d(p)

47 sq m / 506 sq ft
Inclusive of 6 sq m PES
& 3 sq m AC Ledge

Block 18
#01-62 *
#01-70



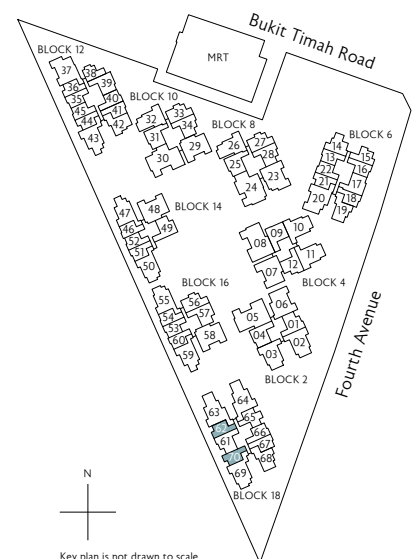
Type A1d

47 sq m / 506 sq ft
Inclusive of 6 sq m Balcony
& 3 sq m AC Ledge

Block 18
#02-62 to #06-62 *
#02-70 to #06-70



* Mirror Image ^ High Ceiling

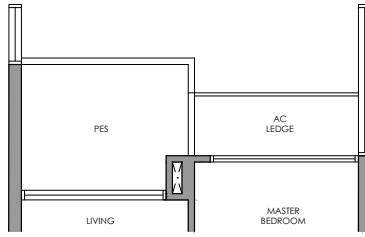


Key plan is not drawn to scale

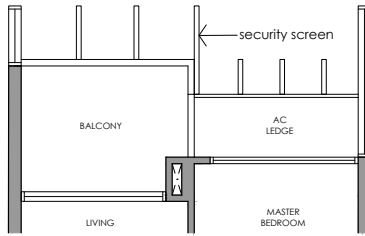
All plans are subject to change as may be required or approved by the relevant authorities. All floor areas are approximate measurements only and are subject to final survey. The balcony shall not be enclosed except with the approved balcony screen. For an illustration of the approved balcony screen, please refer to the diagram annexed hereto as "Annexure 1"

1-Bedroom

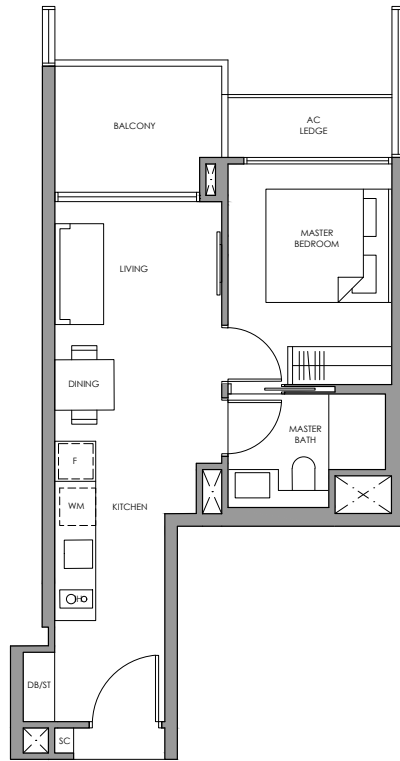
Type A2(p)



Type A2
WITH SECURITY SCREEN



Type A2



- | | |
|----------------------------|-------|
| Fridge | F |
| Gas Hob | GH |
| Shoe Cabinet | SC |
| Washer cum Dryer | WM |
| Distribution Board / Store | DB/ST |



Type A2(p)

46 sq m / 495 sq ft
Inclusive of 6 sq m PES
& 3 sq m AC Ledge

Block 6
#01-18



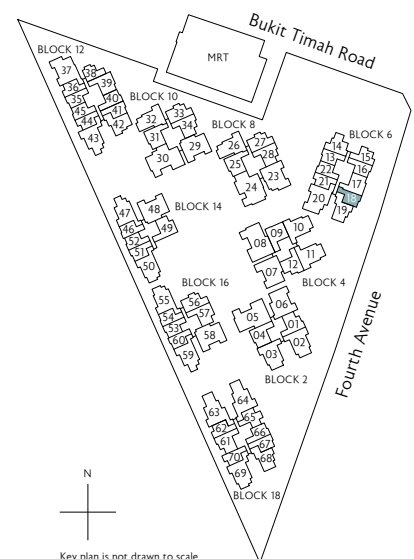
Type A2

46 sq m / 495 sq ft
Inclusive of 6 sq m Balcony
& 3 sq m AC Ledge

Block 6
#02-18 to #06-18
#07-18 to #10-18 (security screen)



* Mirror Image ^ High Ceiling

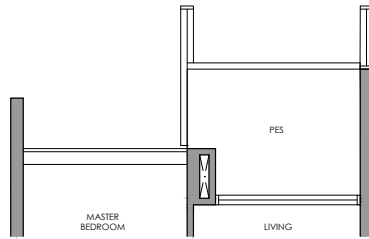


Key plan is not drawn to scale

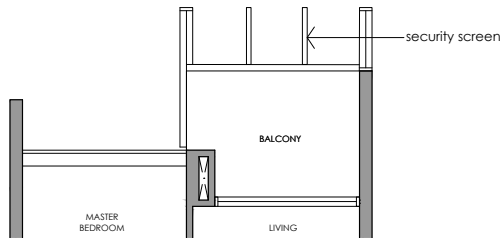
All plans are subject to change as may be required or approved by the relevant authorities. All floor areas are approximate measurements only and are subject to final survey. The balcony shall not be enclosed except with the approved balcony screen. For an illustration of the approved balcony screen, please refer to the diagram annexed hereto as "Annexure 1"

1-Bedroom

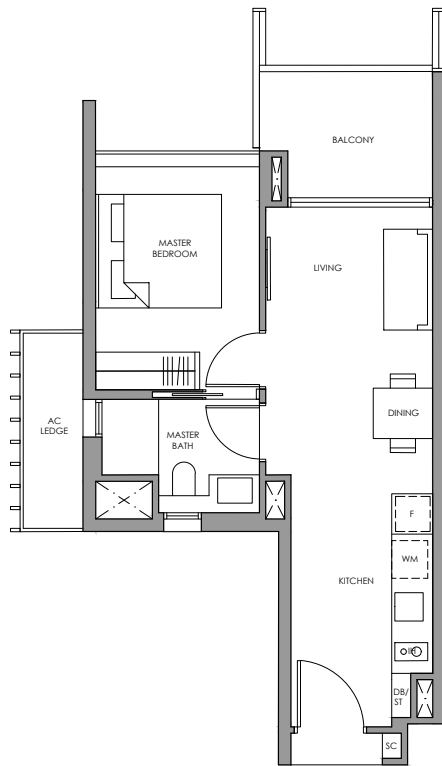
Type A3(p)



Type A3
WITH SECURITY SCREEN



Type A3



- | | |
|----------------------------|-------|
| Fridge | F |
| Gas Hob | GH |
| Shoe Cabinet | SC |
| Washer cum Dryer | WM |
| Distribution Board / Store | DB/ST |

 Type A3(p)

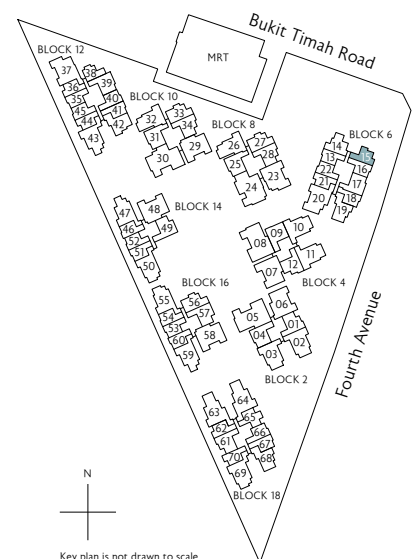
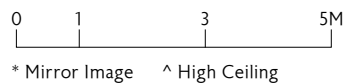
48 sq m / 517 sq ft
Inclusive of 6 sq m PES
& 4 sq m AC Ledge

Block 6
#01-15

 Type A3

48 sq m / 517 sq ft
Inclusive of 6 sq m Balcony
& 4 sq m AC Ledge

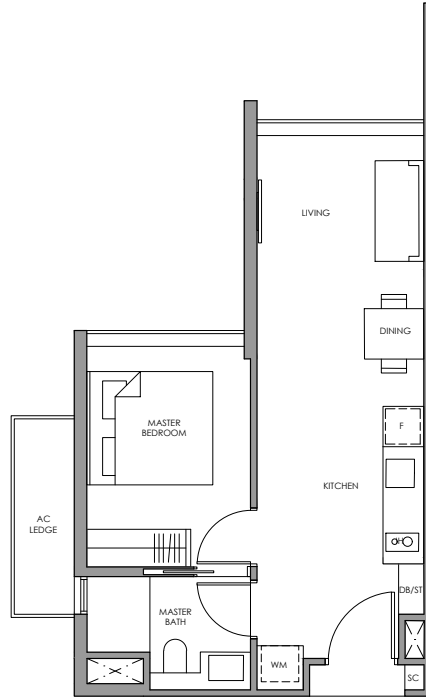
Block 6
#02-15 to #06-15
#07-15 to #10-15 (security screen)



All plans are subject to change as may be required or approved by the relevant authorities. All floor areas are approximate measurements only and are subject to final survey. The balcony shall not be enclosed except with the approved balcony screen. For an illustration of the approved balcony screen, please refer to the diagram annexed hereto as "Annexure 1"

1-Bedroom

Type A4



- | | |
|----------------------------|-------|
| Fridge | F |
| Gas Hob | GH |
| Shoe Cabinet | SC |
| Washer cum Dryer | WM |
| Distribution Board / Store | DB/ST |



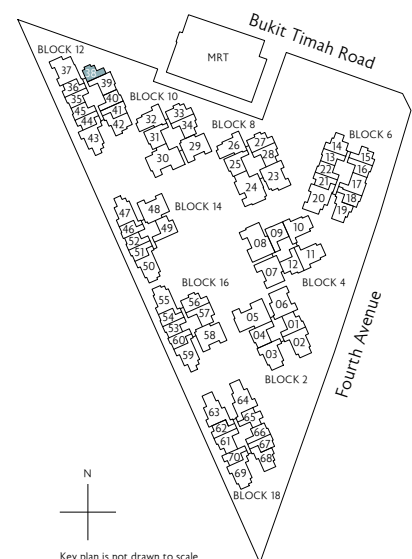
Type A4

44 sq m / 474 sq ft
Inclusive of 4 sq m AC Ledge

Block 12
#01-38 to #10-38



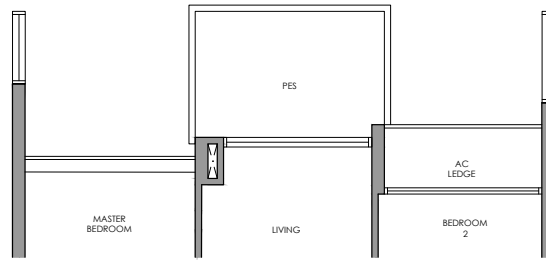
* Mirror Image ^ High Ceiling



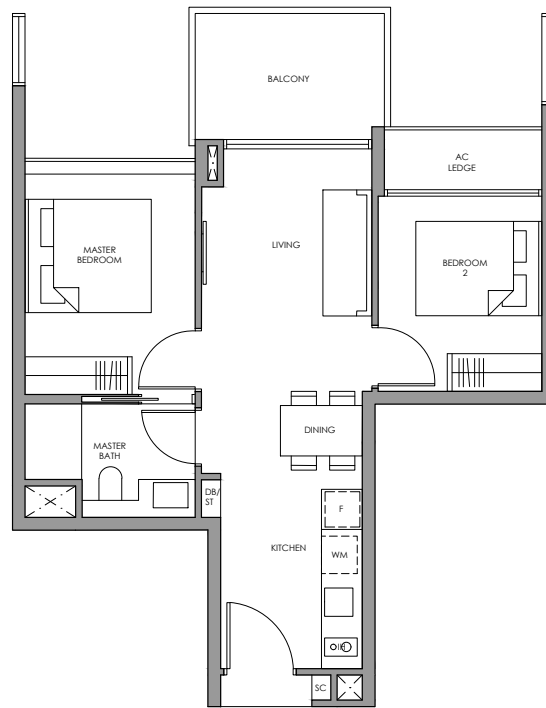
All plans are subject to change as may be required or approved by the relevant authorities. All floor areas are approximate measurements only and are subject to final survey. The balcony shall not be enclosed except with the approved balcony screen. For an illustration of the approved balcony screen, please refer to the diagram annexed hereto as "Annexure 1"

2-Bedroom

Type B1(p)



Type B1



- | | |
|----------------------------|-------|
| Fridge | F |
| Gas Hob | GH |
| Shoe Cabinet | SC |
| Washer cum Dryer | WM |
| Distribution Board / Store | DB/ST |



Type B1(p)

58 sq m / 624 sq ft
Inclusive of 7 sq m PES
& 3 sq m AC Ledge

Block 18
#01-65



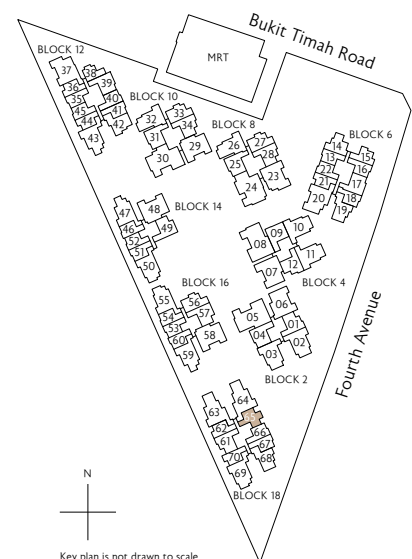
Type B1

58 sq m / 624 sq ft
Inclusive of 7 sq m Balcony
& 3 sq m AC Ledge

Block 18
#02-65 to #06-65



* Mirror Image ^ High Ceiling

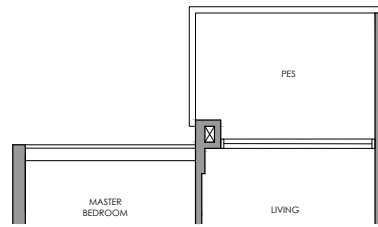


Key plan is not drawn to scale

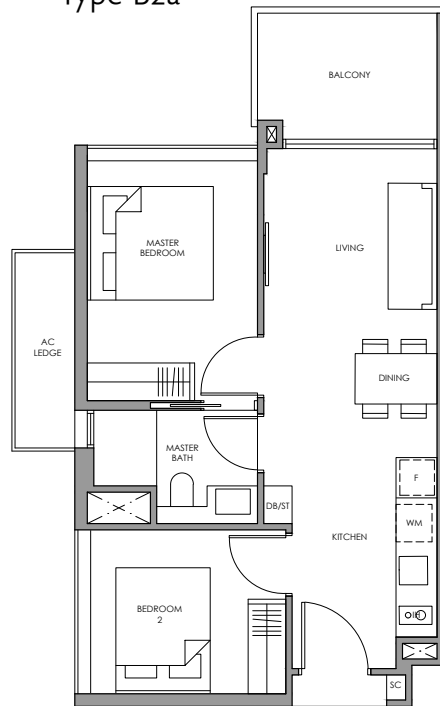
All plans are subject to change as may be required or approved by the relevant authorities. All floor areas are approximate measurements only and are subject to final survey. The balcony shall not be enclosed except with the approved balcony screen. For an illustration of the approved balcony screen, please refer to the diagram annexed hereto as "Annexure 1"

2-Bedroom

Type B2a(p)



Type B2a



- | | |
|----------------------------|-------|
| Fridge | F |
| Gas Hob | GH |
| Shoe Cabinet | SC |
| Washer cum Dryer | WM |
| Distribution Board / Store | DB/ST |



Type B2a(p)

60 sq m / 646 sq ft
Inclusive of 6 sq m PES
& 4 sq m AC Ledge

Block 8
#01-27

Block 10
#01-33



Type B2a

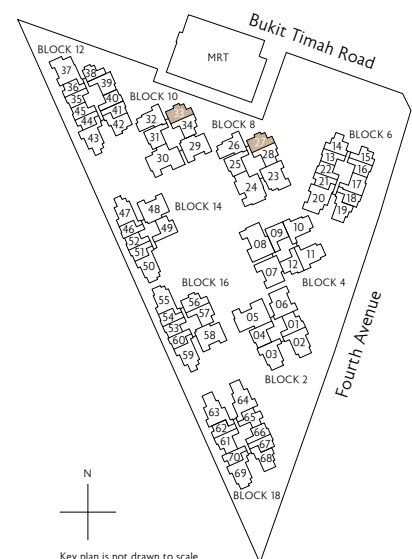
60 sq m / 646 sq ft
Inclusive of 6 sq m Balcony
& 4 sq m AC Ledge

Block 8
#02-27 to #10-27

Block 10
#02-33 to #10-33



* Mirror Image ^ High Ceiling

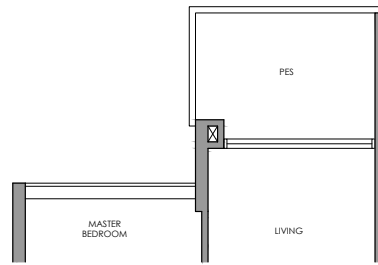


Key plan is not drawn to scale

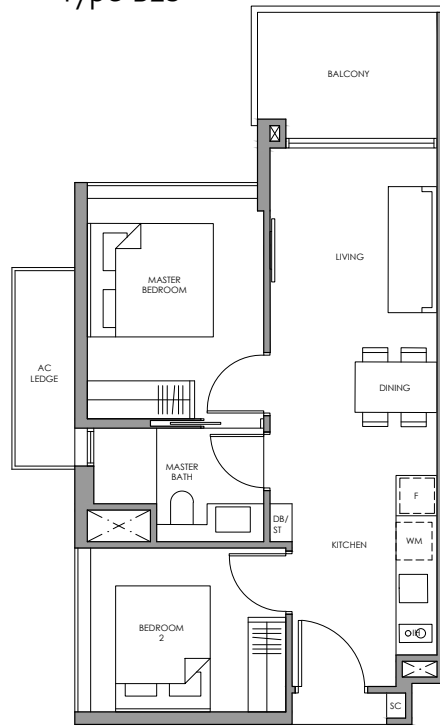
All plans are subject to change as may be required or approved by the relevant authorities. All floor areas are approximate measurements only and are subject to final survey. The balcony shall not be enclosed except with the approved balcony screen. For an illustration of the approved balcony screen, please refer to the diagram annexed hereto as "Annexure 1"

2-Bedroom

Type B2b(p)



Type B2b



- | | |
|----------------------------|-------|
| Fridge | F |
| Gas Hob | GH |
| Shoe Cabinet | SC |
| Washer cum Dryer | WM |
| Distribution Board / Store | DB/ST |

 Type B2b(p)

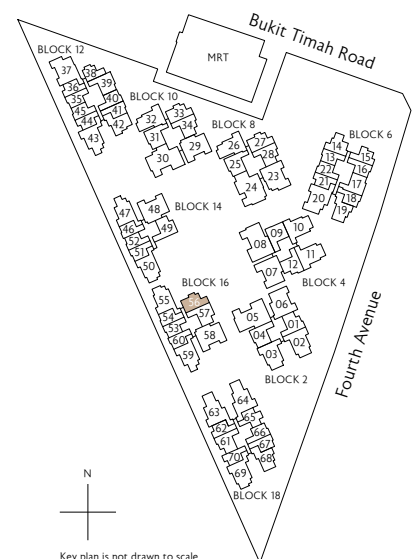
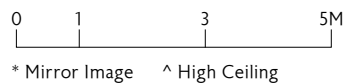
60 sq m / 646 sq ft
Inclusive of 6 sq m PES
& 4 sq m AC Ledge

Block 16
#01-56

 Type B2b

60 sq m / 646 sq ft
Inclusive of 6 sq m Balcony
& 4 sq m AC Ledge

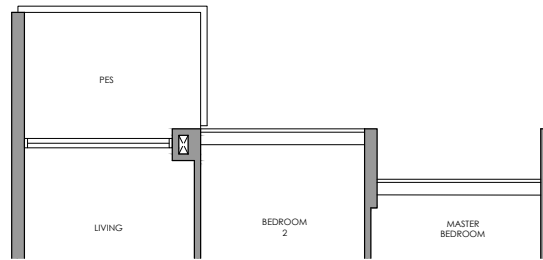
Block 16
#02-56 ^



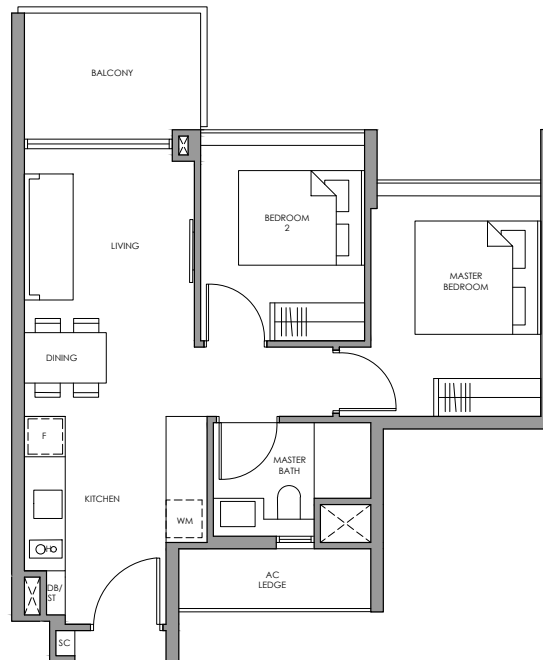
All plans are subject to change as may be required or approved by the relevant authorities. All floor areas are approximate measurements only and are subject to final survey. The balcony shall not be enclosed except with the approved balcony screen. For an illustration of the approved balcony screen, please refer to the diagram annexed hereto as "Annexure 1"

2-Bedroom

Type B3(p)



Type B3



- | | |
|----------------------------|-------|
| Fridge | F |
| Gas Hob | GH |
| Shoe Cabinet | SC |
| Washer cum Dryer | WM |
| Distribution Board / Store | DB/ST |



Type B3(p)

60 sq m / 646 sq ft
Inclusive of 6 sq m PES
& 4 sq m AC Ledge

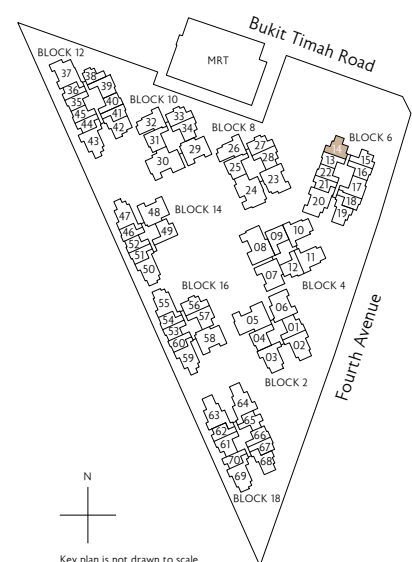
Block 6
#01-14



Type B3

60 sq m / 646 sq ft
Inclusive of 6 sq m Balcony
& 4 sq m AC Ledge

Block 6
#02-14 to #10-14



* Mirror Image ^ High Ceiling

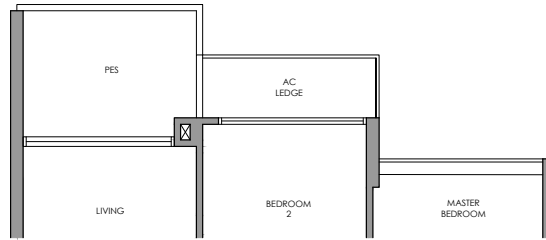


Key plan is not drawn to scale

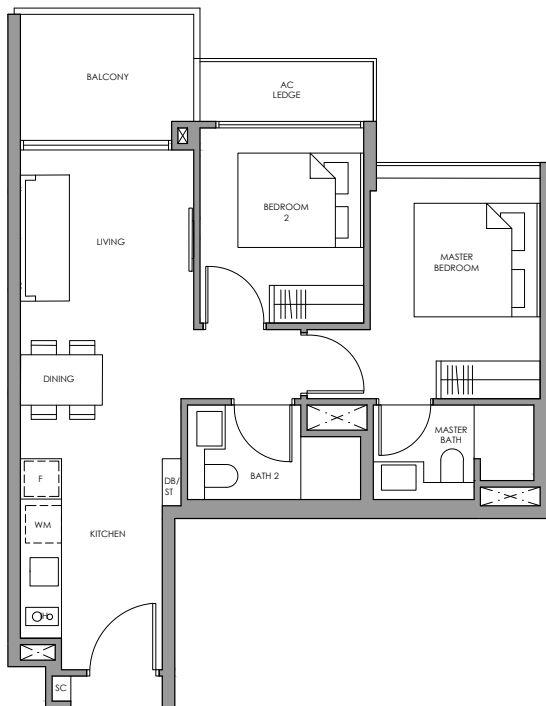
All plans are subject to change as may be required or approved by the relevant authorities. All floor areas are approximate measurements only and are subject to final survey. The balcony shall not be enclosed except with the approved balcony screen. For an illustration of the approved balcony screen, please refer to the diagram annexed hereto as "Annexure 1"

2-Bedroom Premium

Type BP1a(p)



Type BP1a



- | | |
|----------------------------|-------|
| Fridge | F |
| Gas Hob | GH |
| Shoe Cabinet | SC |
| Washer cum Dryer | WM |
| Distribution Board / Store | DB/ST |



Type BP1a(p)

64 sq m / 689 sq ft
Inclusive of 6 sq m PES
& 3 sq m AC Ledge

Block 8
#01-28

Block 10
#01-34



Type BP1a

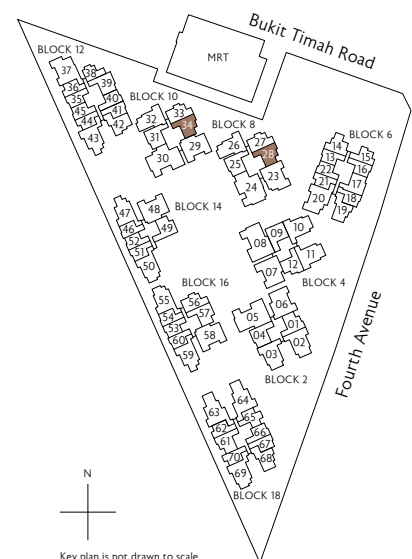
64 sq m / 689 sq ft
Inclusive of 6 sq m Balcony
& 3 sq m AC Ledge

Block 8
#02-28 to #10-28

Block 10
#02-34 to #10-34



* Mirror Image ^ High Ceiling

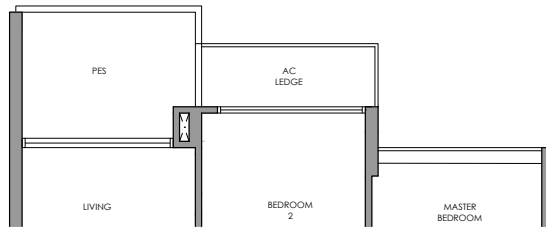


N
Key plan is not drawn to scale

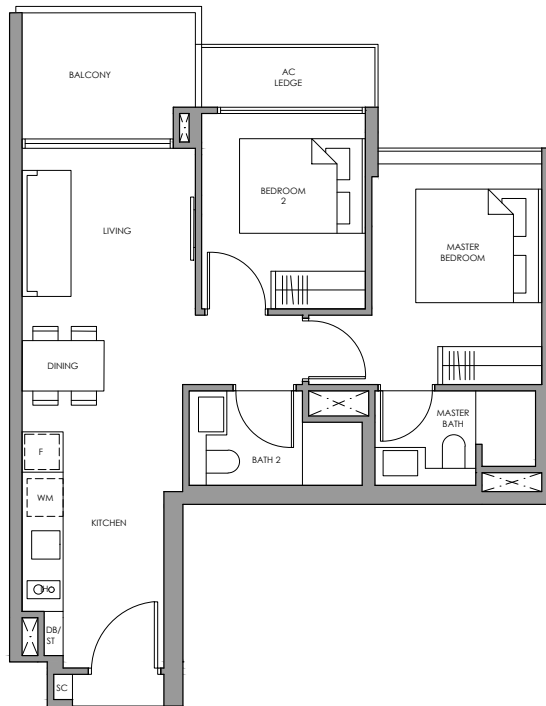
All plans are subject to change as may be required or approved by the relevant authorities. All floor areas are approximate measurements only and are subject to final survey. The balcony shall not be enclosed except with the approved balcony screen. For an illustration of the approved balcony screen, please refer to the diagram annexed hereto as "Annexure 1"

2-Bedroom Premium

Type BP1b(p)



Type BP1b



- | | |
|----------------------------|-------|
| Fridge | F |
| Gas Hob | GH |
| Shoe Cabinet | SC |
| Washer cum Dryer | WM |
| Distribution Board / Store | DB/ST |



Type BP1b(p)

64 sq m / 689 sq ft
Inclusive of 6 sq m PES
& 3 sq m AC Ledge

Block 2
#01-01 *

Block 4
#01-12

Block 18
#01-61 *



Type BP1b

64 sq m / 689 sq ft
Inclusive of 6 sq m Balcony
& 3 sq m AC Ledge

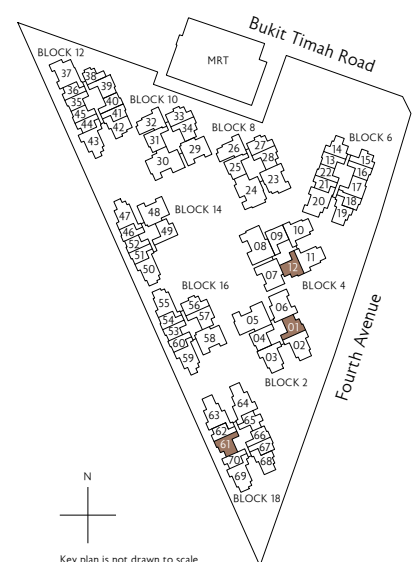
Block 2
#02-01 to #06-01 *

Block 4
#02-12 to #06-12

Block 18
#02-61 to #06-61 *



* Mirror Image ^ High Ceiling

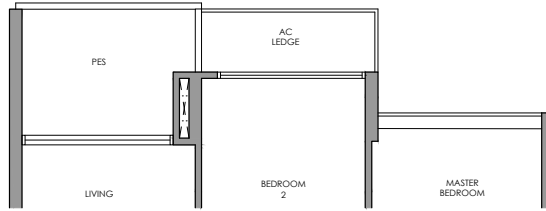


N
Key plan is not drawn to scale

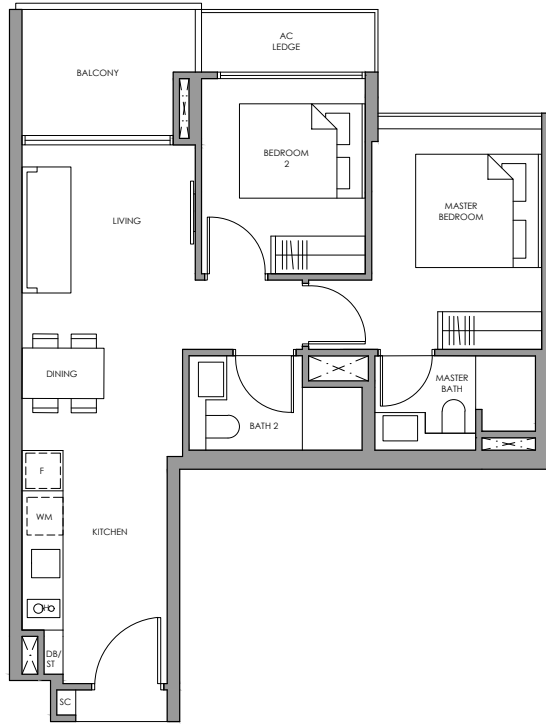
All plans are subject to change as may be required or approved by the relevant authorities. All floor areas are approximate measurements only and are subject to final survey. The balcony shall not be enclosed except with the approved balcony screen. For an illustration of the approved balcony screen, please refer to the diagram annexed hereto as "Annexure 1"

2-Bedroom Premium

Type BP1c(p)



Type BP1c



- | | |
|----------------------------|-------|
| Fridge | F |
| Gas Hob | GH |
| Shoe Cabinet | SC |
| Washer cum Dryer | WM |
| Distribution Board / Store | DB/ST |



Type BP1c(p)

65 sq m / 700 sq ft
Inclusive of 6 sq m PES
& 3 sq m AC Ledge

Block 14
#01-49 *

Block 16
#01-57



Type BP1c

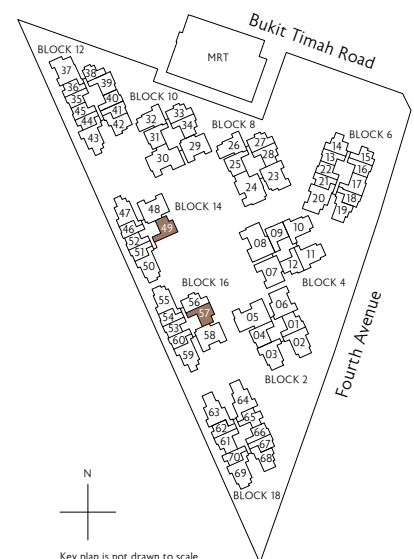
65 sq m / 700 sq ft
Inclusive of 6 sq m Balcony
& 3 sq m AC Ledge

Block 14
#02-49 *^

Block 16
#02-57 ^



* Mirror Image ^ High Ceiling

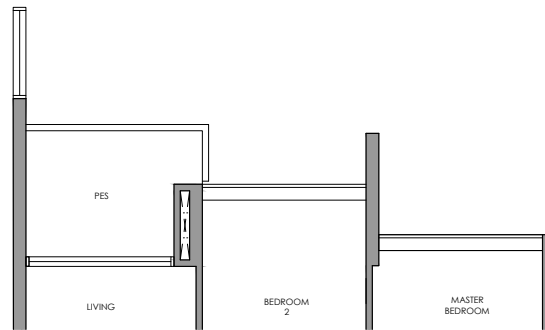


Key plan is not drawn to scale

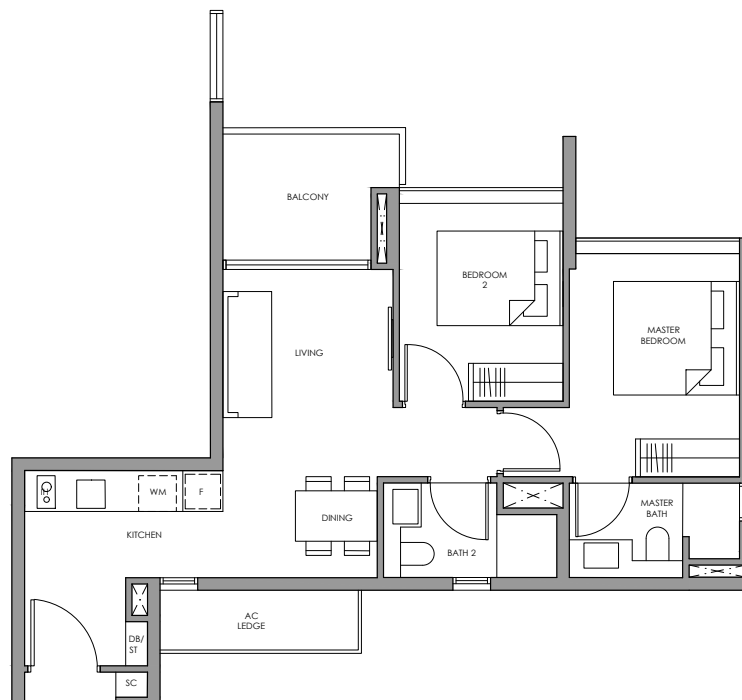
All plans are subject to change as may be required or approved by the relevant authorities. All floor areas are approximate measurements only and are subject to final survey. The balcony shall not be enclosed except with the approved balcony screen. For an illustration of the approved balcony screen, please refer to the diagram annexed hereto as "Annexure 1"

2-Bedroom Premium

Type BP2(p)



Type BP2



- | | |
|----------------------------|-------|
| Fridge | F |
| Gas Hob | GH |
| Shoe Cabinet | SC |
| Washer cum Dryer | WM |
| Distribution Board / Store | DB/ST |



Type BP2(p)

66 sq m / 710 sq ft
Inclusive of 6 sq m PES
& 4 sq m AC Ledge

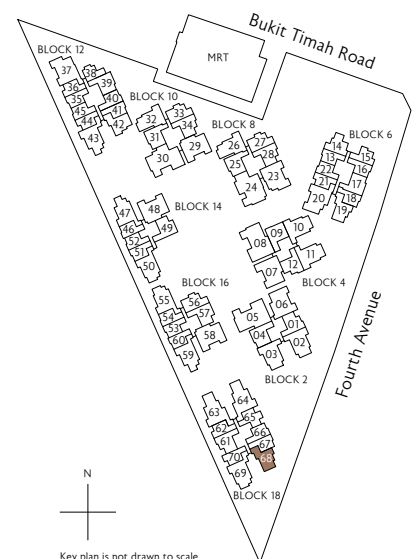
Block 18
#01-68



Type BP2

66 sq m / 710 sq ft
Inclusive of 6 sq m Balcony
& 4 sq m AC Ledge

Block 18
#02-68 to #06-68



0 1 3 5M

* Mirror Image ^ High Ceiling

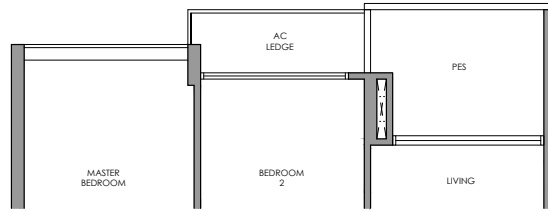


Key plan is not drawn to scale

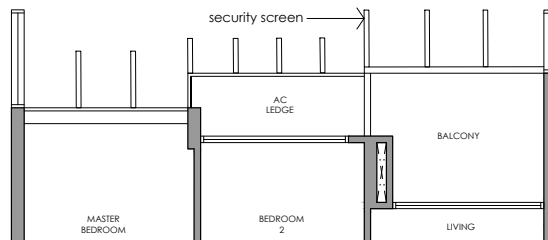
All plans are subject to change as may be required or approved by the relevant authorities. All floor areas are approximate measurements only and are subject to final survey. The balcony shall not be enclosed except with the approved balcony screen. For an illustration of the approved balcony screen, please refer to the diagram annexed hereto as "Annexure 1"

2-Bedroom Premium

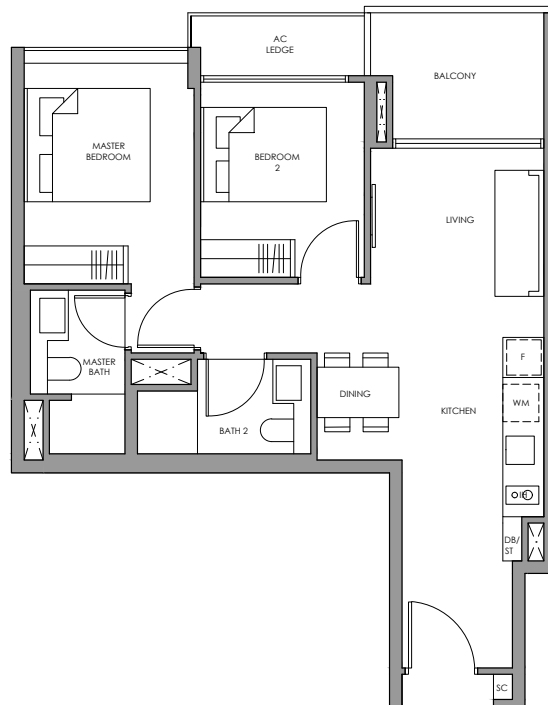
Type BP3a(p)



Type BP3a
WITH SECURITY SCREEN



Type BP3a



- | | |
|----------------------------|-------|
| Fridge | F |
| Gas Hob | GH |
| Shoe Cabinet | SC |
| Washer cum Dryer | WM |
| Distribution Board / Store | DB/ST |

Type BP3a(p)
66 sq m / 710 sq ft
Inclusive of 6 sq m PES
& 3 sq m AC Ledge

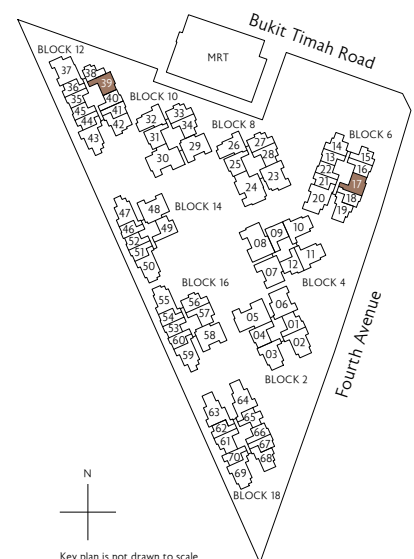
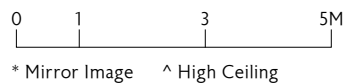
Block 6
#01-17

Block 12
#01-39 *

Type BP3a
66 sq m / 710 sq ft
Inclusive of 6 sq m Balcony
& 3 sq m AC Ledge

Block 6
#02-17 to #06-17
#07-17 to #10-17 (security screen)

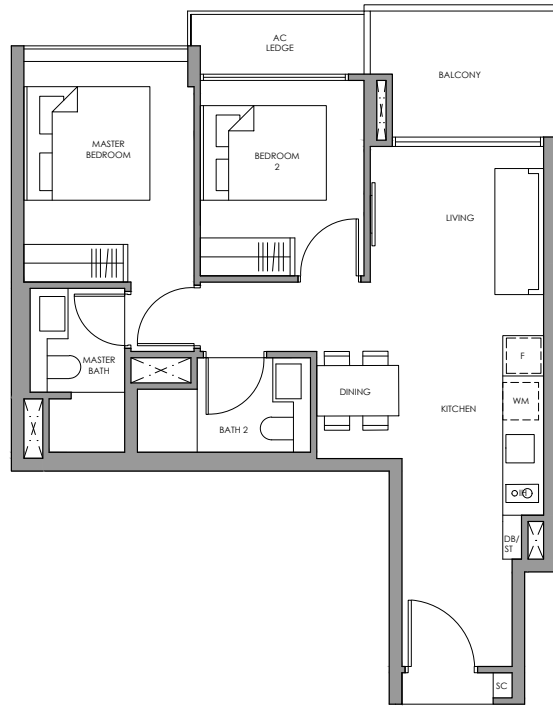
Block 12
#02-39 to #10-39 *



All plans are subject to change as may be required or approved by the relevant authorities. All floor areas are approximate measurements only and are subject to final survey. The balcony shall not be enclosed except with the approved balcony screen. For an illustration of the approved balcony screen, please refer to the diagram annexed hereto as "Annexure 1"

2-Bedroom Premium

Type BP3b



- | | |
|----------------------------|-------|
| Fridge | F |
| Gas Hob | GH |
| Shoe Cabinet | SC |
| Washer cum Dryer | WM |
| Distribution Board / Store | DB/ST |



Type BP3b

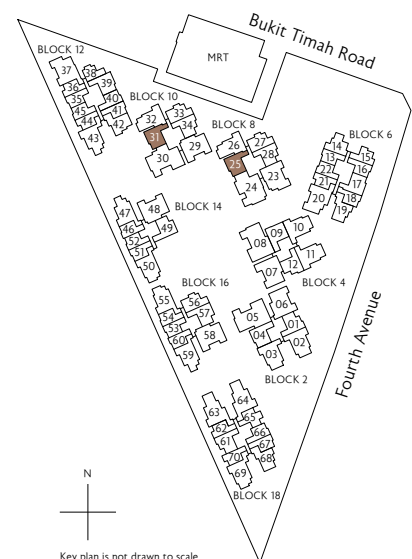
66 sq m / 710 sq ft
Inclusive of 6 sq m Balcony
& 3 sq m AC Ledge

Block 8
#02-25 to #10-25

Block 10
#02-31 to #10-31



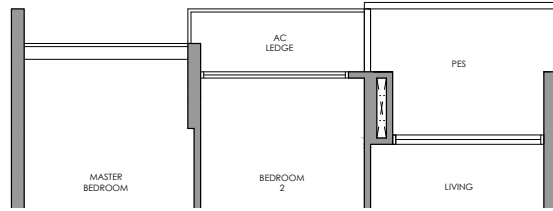
* Mirror Image ^ High Ceiling



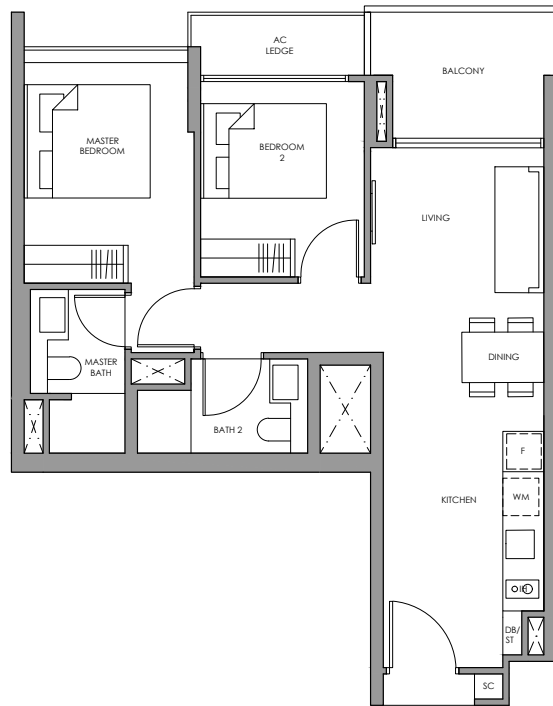
All plans are subject to change as may be required or approved by the relevant authorities. All floor areas are approximate measurements only and are subject to final survey. The balcony shall not be enclosed except with the approved balcony screen. For an illustration of the approved balcony screen, please refer to the diagram annexed hereto as "Annexure 1"

2-Bedroom Premium

Type BP4(p)



Type BP4



- | | |
|----------------------------|-------|
| Fridge | F |
| Gas Hob | GH |
| Shoe Cabinet | SC |
| Washer cum Dryer | WM |
| Distribution Board / Store | DB/ST |

Type BP4(p)

66 sq m / 710 sq ft
Inclusive of 6 sq m PES
& 3 sq m AC Ledge

Block 2
#01-04

Block 4
#01-09 *

Type BP4

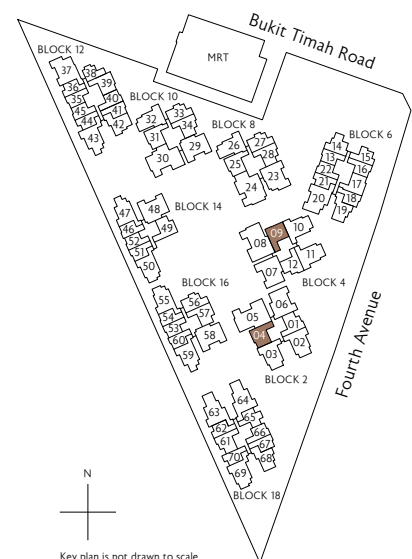
66 sq m / 710 sq ft
Inclusive of 6 sq m Balcony
& 3 sq m AC Ledge

Block 2
#02-04 to #06-04

Block 4
#02-09 to #06-09 *



* Mirror Image ^ High Ceiling

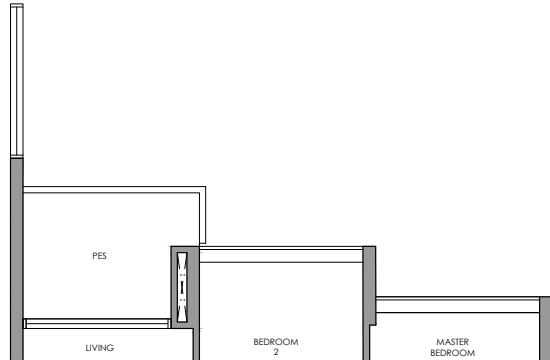


Key plan is not drawn to scale

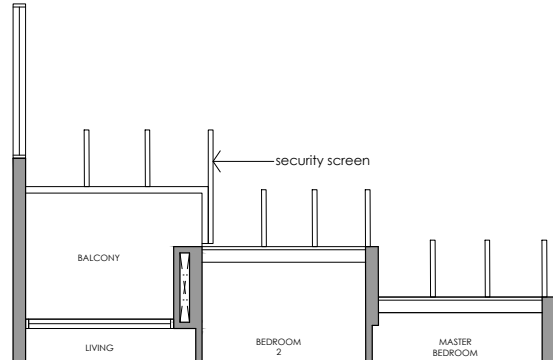
All plans are subject to change as may be required or approved by the relevant authorities. All floor areas are approximate measurements only and are subject to final survey. The balcony shall not be enclosed except with the approved balcony screen. For an illustration of the approved balcony screen, please refer to the diagram annexed hereto as "Annexure 1"

2-Bedroom Premium

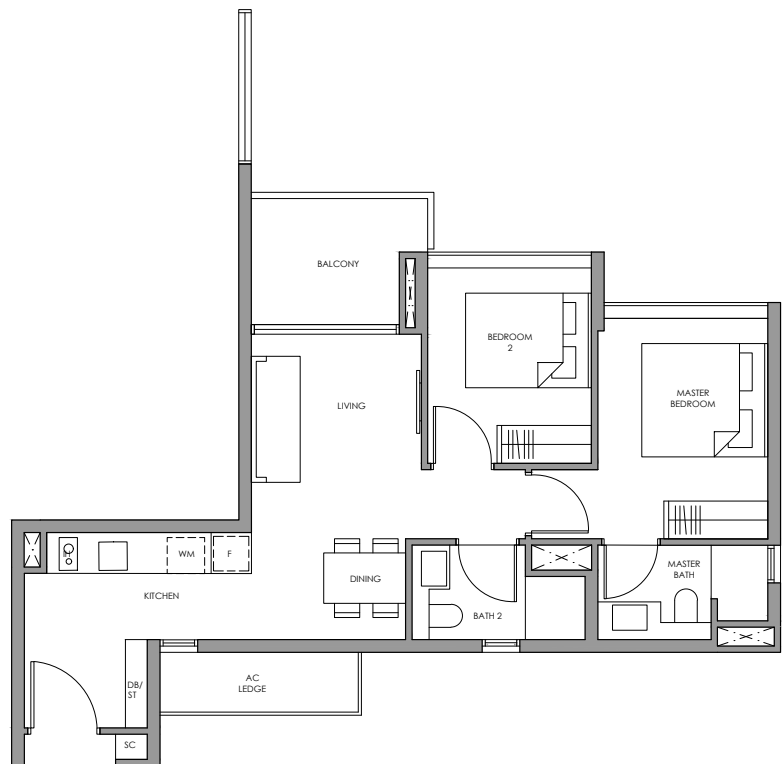
Type BP5(p)



Type BP5
WITH SECURITY SCREEN



Type BP5



- | | |
|----------------------------|-------|
| Fridge | F |
| Gas Hob | GH |
| Shoe Cabinet | SC |
| Washer cum Dryer | WM |
| Distribution Board / Store | DB/ST |

 Type BP5(p)

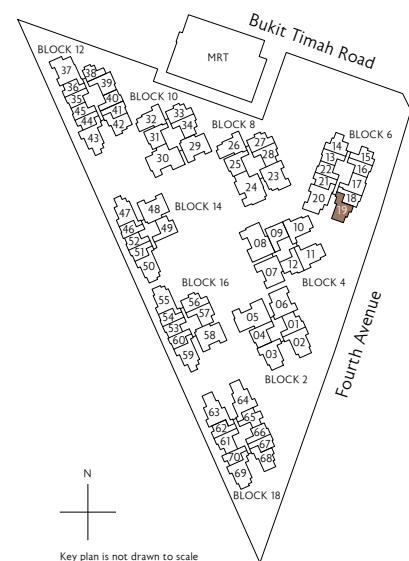
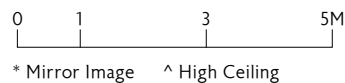
66 sq m / 710 sq ft
Inclusive of 6 sq m PES
& 4 sq m AC Ledge

Block 6
#01-19

 Type BP5

66 sq m / 710 sq ft
Inclusive of 6 sq m Balcony
& 4 sq m AC Ledge

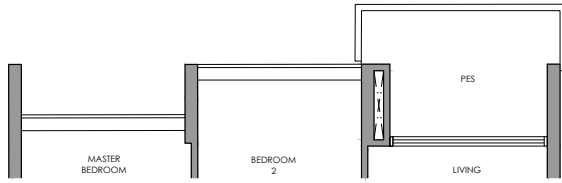
Block 6
#02-19 to #06-19
#07-19 to #10-19 (security screen)



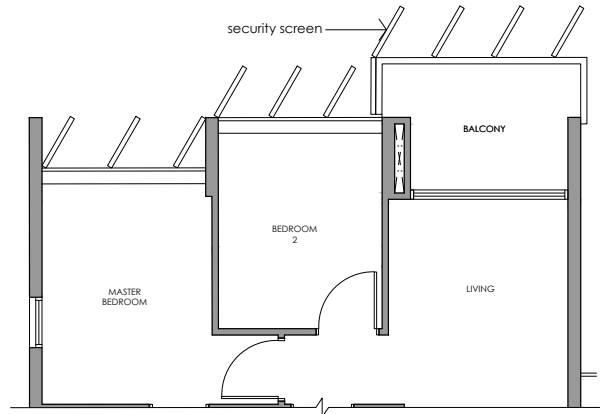
All plans are subject to change as may be required or approved by the relevant authorities. All floor areas are approximate measurements only and are subject to final survey. The balcony shall not be enclosed except with the approved balcony screen. For an illustration of the approved balcony screen, please refer to the diagram annexed hereto as "Annexure 1"

2-Bedroom Premium

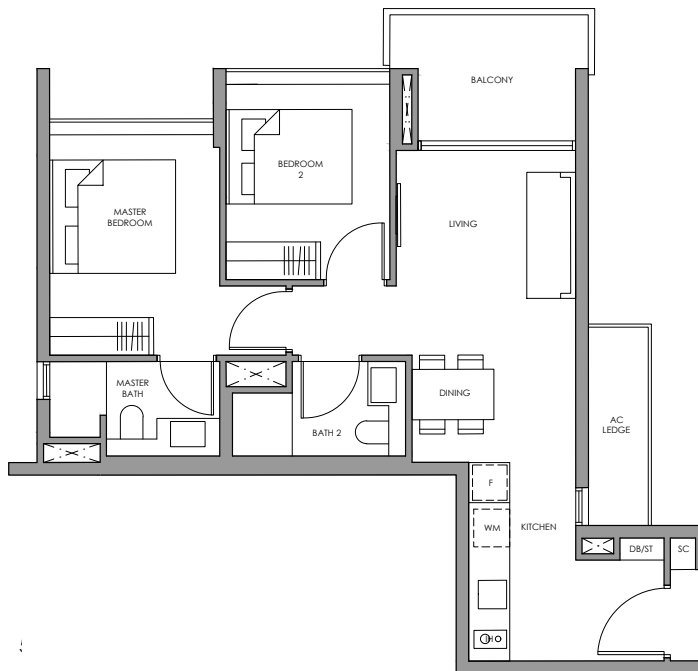
Type BP6(p)



Type BP6
WITH SECURITY SCREEN



Type BP6



- Fridge
- Gas Hob
- Shoe Cabinet
- Washer cum Dryer
- Distribution Board / Store
- F
- GH
- SC
- WM
- DB/ST

Type BP6(p)

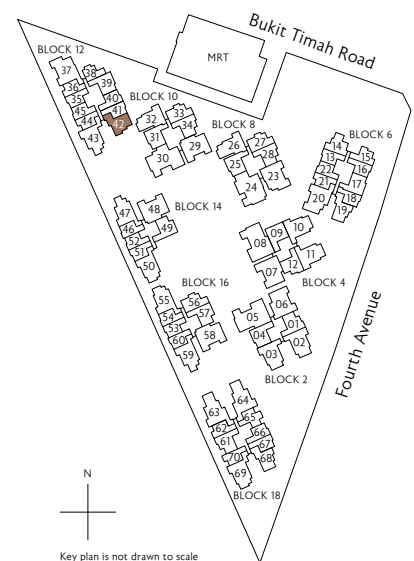
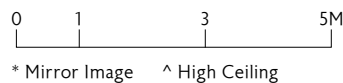
67 sq m / 721 sq ft
Inclusive of 6 sq m PES
& 4 sq m AC Ledge

Block 12
#01-42

Type BP6

67 sq m / 721 sq ft
Inclusive of 6 sq m Balcony
& 4 sq m AC Ledge

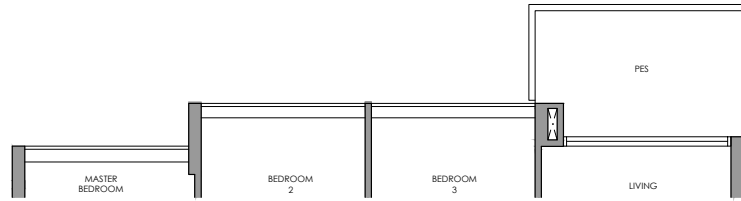
Block 12
#02-42 to #07-42
#08-42 to #10-42 (security screen)



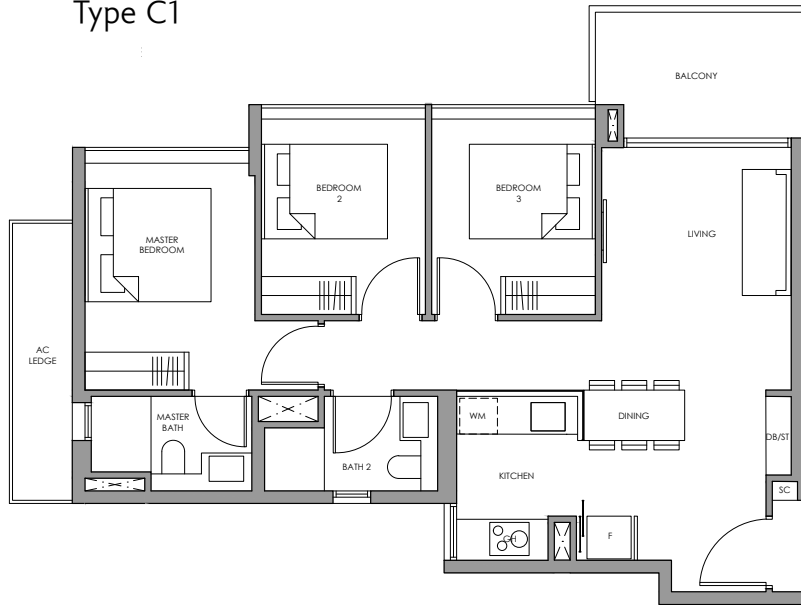
All plans are subject to change as may be required or approved by the relevant authorities. All floor areas are approximate measurements only and are subject to final survey. The balcony shall not be enclosed except with the approved balcony screen. For an illustration of the approved balcony screen, please refer to the diagram annexed hereto as "Annexure 1"

3-Bedroom

Type C1(p)



Type C1



- | | |
|----------------------------|-------|
| Fridge | F |
| Gas Hob | GH |
| Shoe Cabinet | SC |
| Washer cum Dryer | WM |
| Distribution Board / Store | DB/ST |



Type C1(p)

85 sq m / 915 sq ft
Inclusive of 7 sq m PES
& 5 sq m AC Ledge

Block 8
#01-26

Block 10
#01-32



Type C1

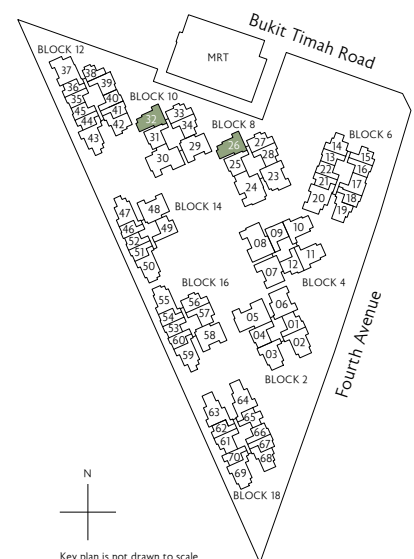
85 sq m / 915 sq ft
Inclusive of 7 sq m Balcony
& 5 sq m AC Ledge

Block 8
#02-26 to #10-26

Block 10
#02-32 to #10-32



* Mirror Image ^ High Ceiling

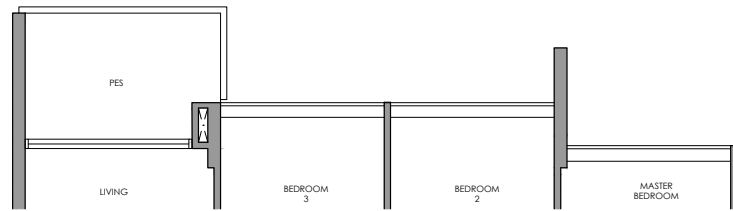


N
Key plan is not drawn to scale

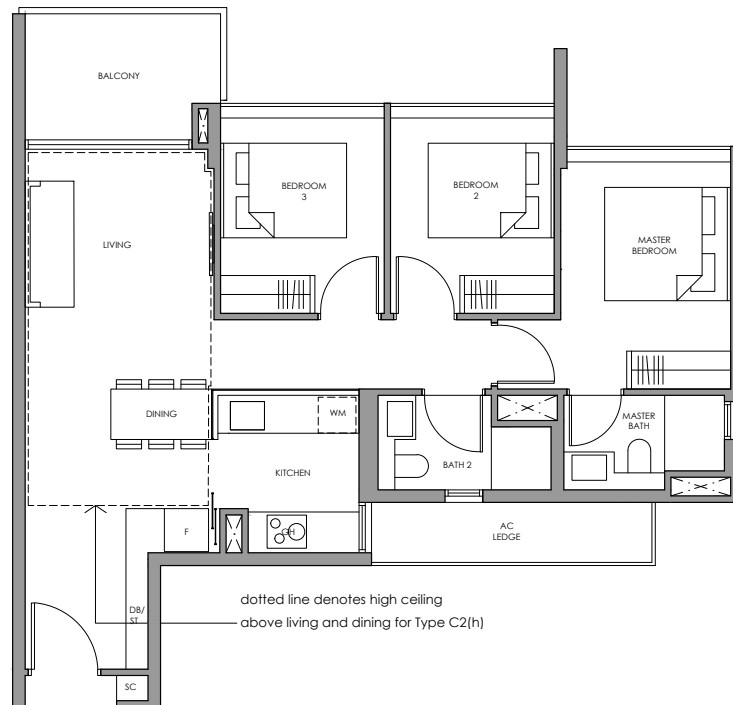
All plans are subject to change as may be required or approved by the relevant authorities. All floor areas are approximate measurements only and are subject to final survey. The balcony shall not be enclosed except with the approved balcony screen. For an illustration of the approved balcony screen, please refer to the diagram annexed hereto as "Annexure 1"

3-Bedroom

Type C2(p)



Type C2
Type C2(h)



Fridge
Gas Hob
Shoe Cabinet
Washer cum Dryer
Distribution Board / Store

F
GH
SC
WM
DB/ST



Type C2(p)

88 sq m / 947 sq ft
Inclusive of 7 sq m PES
& 5 sq m AC Ledge

Block 2
#01-02
#01-03 *

Block 4
#01-10
#01-11 *



Type C2

88 sq m / 947 sq ft
Inclusive of 7 sq m Balcony
& 5 sq m AC Ledge

Block 2
#02-02 to #05-02
#02-03 to #05-03 *

Block 4
#02-10 to #05-10
#02-11 to #06-11 *

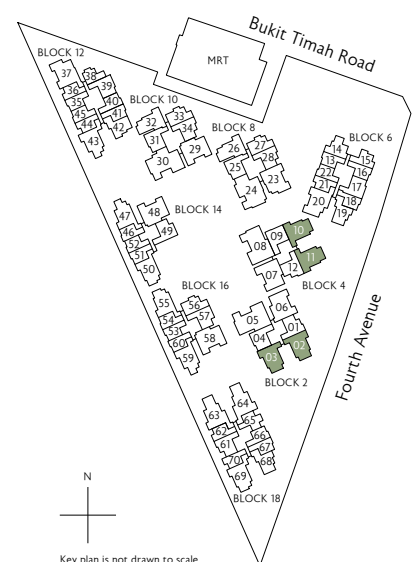


Type C2(h)

88 sq m / 947 sq ft
Inclusive of 7 sq m Balcony
& 5 sq m AC Ledge

Block 2
#06-02
#06-03 *

Block 4
#06-10



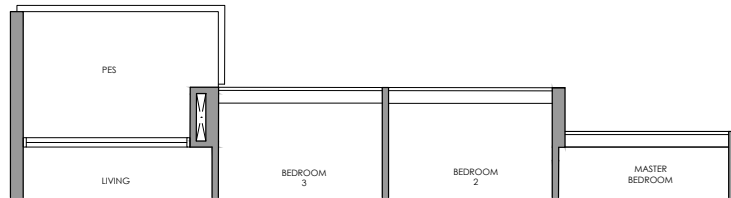
0 1 3 5M

* Mirror Image ^ High Ceiling

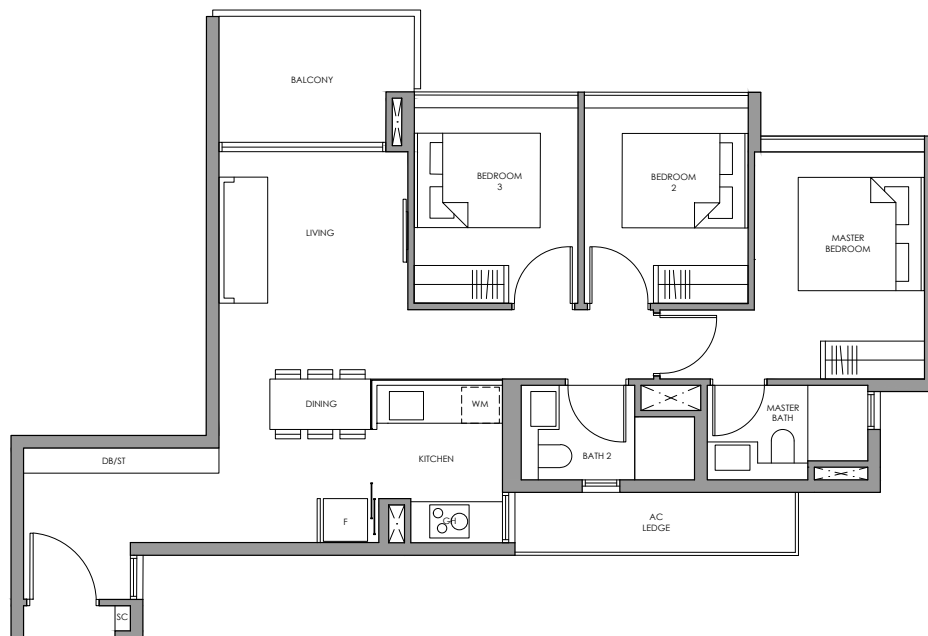
All plans are subject to change as may be required or approved by the relevant authorities. All floor areas are approximate measurements only and are subject to final survey. The balcony shall not be enclosed except with the approved balcony screen. For an illustration of the approved balcony screen, please refer to the diagram annexed hereto as "Annexure 1"

3-Bedroom

Type C3(p)



Type C3



- | | |
|----------------------------|-------|
| Fridge | F |
| Gas Hob | GH |
| Shoe Cabinet | SC |
| Washer cum Dryer | WM |
| Distribution Board / Store | DB/ST |



Type C3(p)

89 sq m / 958 sq ft
Inclusive of 7 sq m PES
& 5 sq m AC Ledge

Block 14
#01-50 *

Block 16
#01-55



Type C3

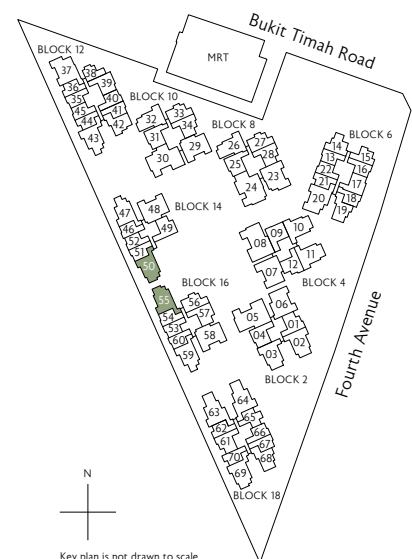
89 sq m / 958 sq ft
Inclusive of 7 sq m Balcony
& 5 sq m AC Ledge

Block 14
#02-50 *^

Block 16
#02-55 ^



* Mirror Image ^ High Ceiling

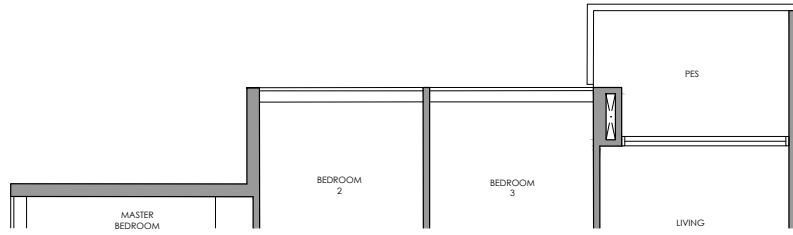


N
Key plan is not drawn to scale

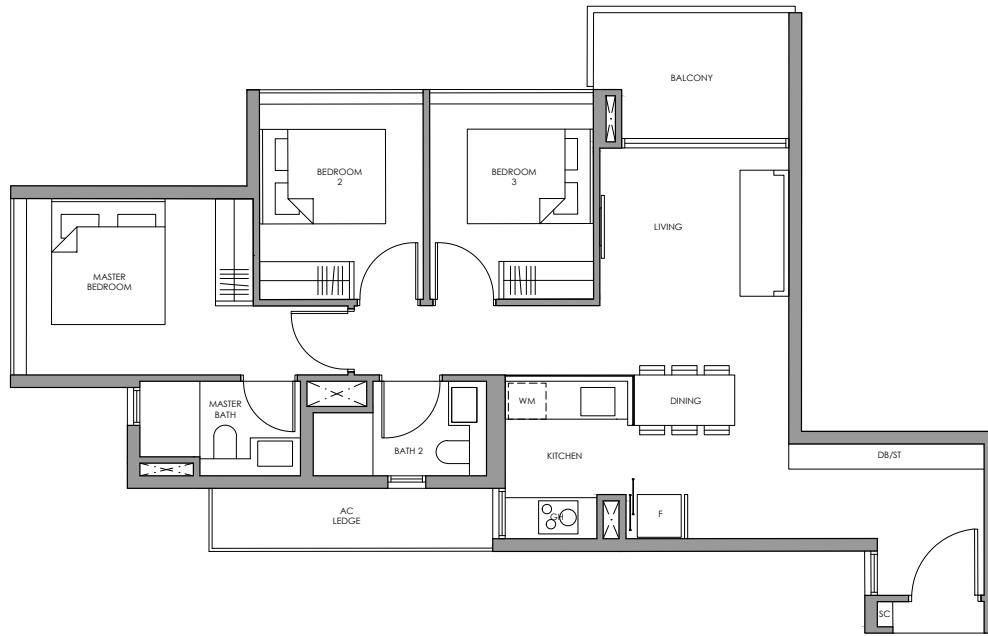
All plans are subject to change as may be required or approved by the relevant authorities. All floor areas are approximate measurements only and are subject to final survey. The balcony shall not be enclosed except with the approved balcony screen. For an illustration of the approved balcony screen, please refer to the diagram annexed hereto as "Annexure 1"

3-Bedroom

Type C4(p)



Type C4



- | | |
|----------------------------|-------|
| Fridge | F |
| Gas Hob | GH |
| Shoe Cabinet | SC |
| Washer cum Dryer | WM |
| Distribution Board / Store | DB/ST |



Type C4(p)

89 sq m / 958 sq ft
Inclusive of 7 sq m PES
& 5 sq m AC Ledge

Block 14
#01-47 *

Block 16
#01-59



Type C4

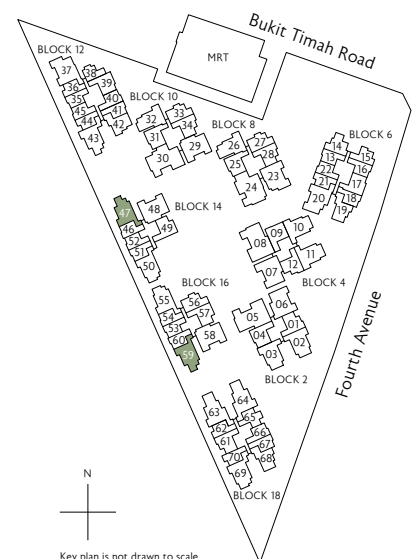
89 sq m / 958 sq ft
Inclusive of 7 sq m Balcony
& 5 sq m AC Ledge

Block 14
#02-47 *^

Block 16
#02-59 ^



* Mirror Image ^ High Ceiling



N
Key plan is not drawn to scale

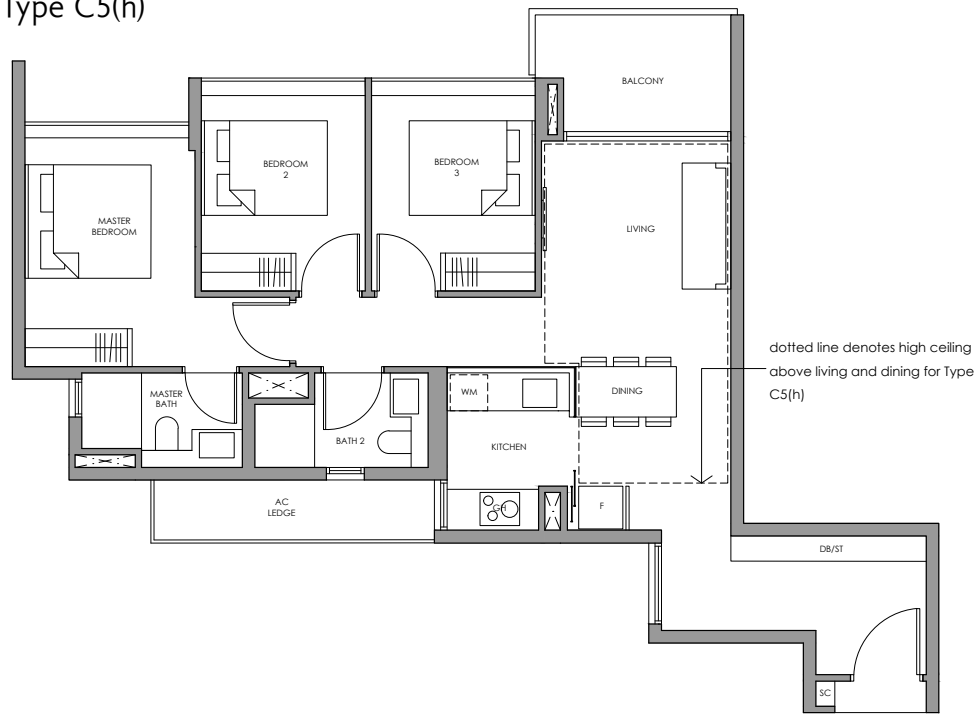
All plans are subject to change as may be required or approved by the relevant authorities. All floor areas are approximate measurements only and are subject to final survey. The balcony shall not be enclosed except with the approved balcony screen. For an illustration of the approved balcony screen, please refer to the diagram annexed hereto as "Annexure 1"

3-Bedroom

Type C5(p)



Type C5
Type C5(h)



dotted line denotes high ceiling above living and dining for Type C5(h)

- | | |
|----------------------------|-------|
| Fridge | F |
| Gas Hob | GH |
| Shoe Cabinet | SC |
| Washer cum Dryer | WM |
| Distribution Board / Store | DB/ST |



Type C5(p)

90 sq m / 969 sq ft
Inclusive of 6 sq m PES
& 5 sq m AC Ledge

Block 18
#01-69



Type C5

90 sq m / 969 sq ft
Inclusive of 6 sq m Balcony
& 5 sq m AC Ledge

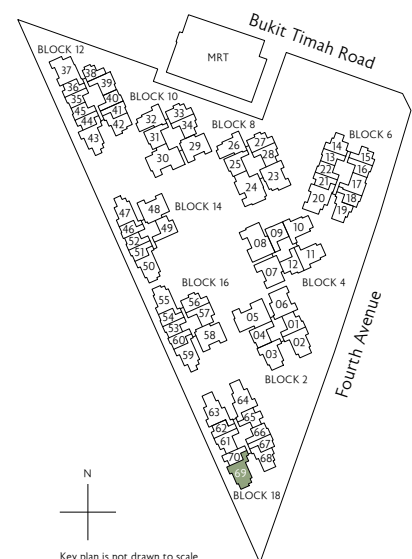
Block 18
#02-69 to #05-69



Type C5(h)

90 sq m / 969 sq ft
Inclusive of 6 sq m Balcony
& 5 sq m AC Ledge

Block 18
#06-69



Key plan is not drawn to scale

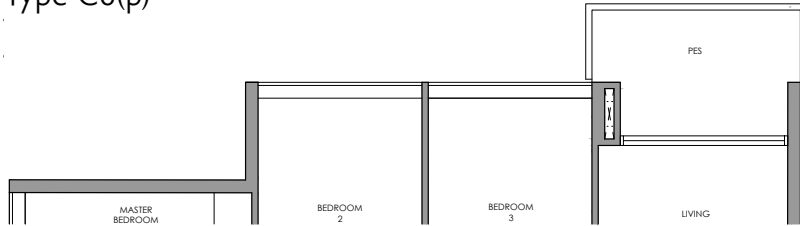


* Mirror Image ^ High Ceiling

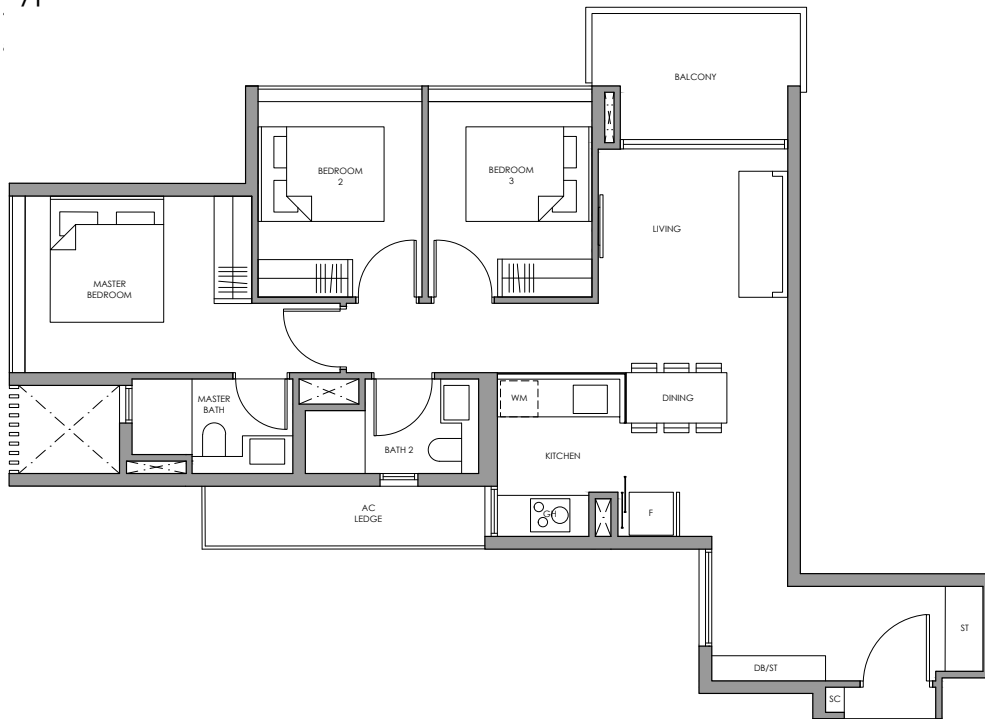
All plans are subject to change as may be required or approved by the relevant authorities. All floor areas are approximate measurements only and are subject to final survey. The balcony shall not be enclosed except with the approved balcony screen. For an illustration of the approved balcony screen, please refer to the diagram annexed hereto as "Annexure 1"

3-Bedroom

Type C6(p)



Type C6



- | | |
|----------------------------|-------|
| Fridge | F |
| Gas Hob | GH |
| Shoe Cabinet | SC |
| Washer cum Dryer | WM |
| Distribution Board / Store | DB/ST |



Type C6(p)

90 sq m / 969 sq ft
Inclusive of 7 sq m PES
& 5 sq m AC Ledge

Block 12
#01-43



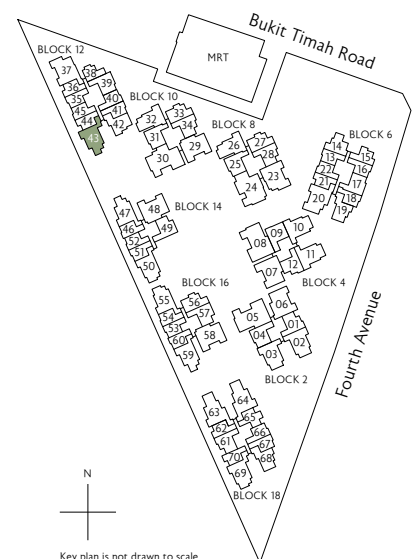
Type C6

90 sq m / 969 sq ft
Inclusive of 7 sq m Balcony
& 5 sq m AC Ledge

Block 12
#02-43 to #06-43



* Mirror Image ^ High Ceiling

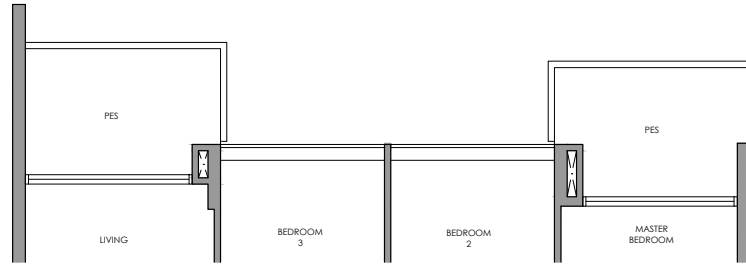


Key plan is not drawn to scale

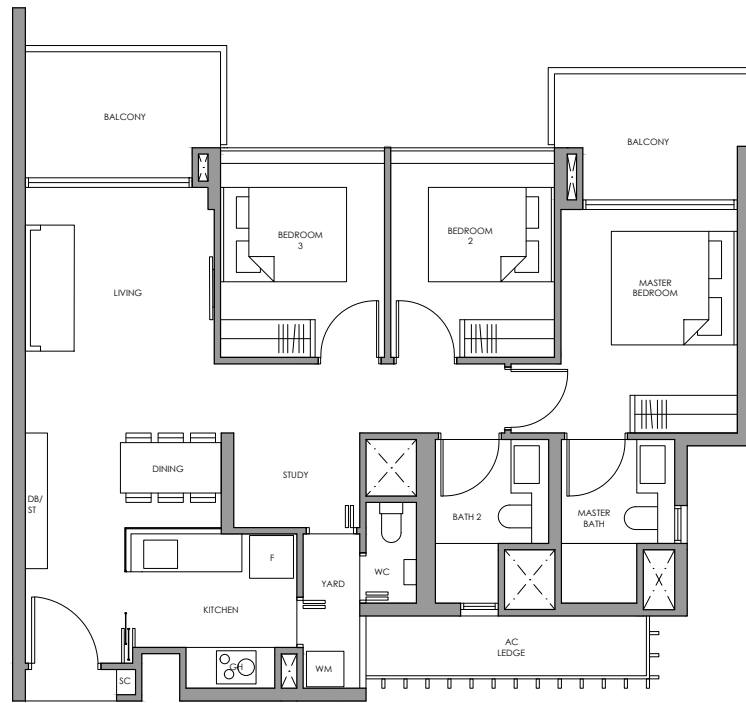
All plans are subject to change as may be required or approved by the relevant authorities. All floor areas are approximate measurements only and are subject to final survey. The balcony shall not be enclosed except with the approved balcony screen. For an illustration of the approved balcony screen, please refer to the diagram annexed hereto as "Annexure 1"

3-Bedroom + Study

Type CS1(p)



Type CS1



- | | |
|----------------------------|-------|
| Fridge | F |
| Gas Hob | GH |
| Shoe Cabinet | SC |
| Washer cum Dryer | WM |
| Distribution Board / Store | DB/ST |



Type CS1(p)

100 sq m / 1076 sq ft
Inclusive of 13 sq m PES
& 5 sq m AC Ledge

Block 8
#01-23



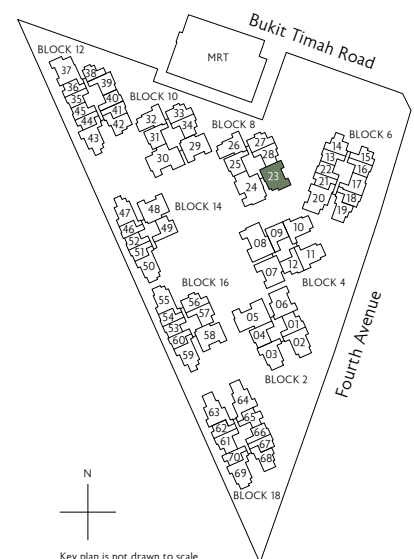
Type CS1

100 sq m / 1076 sq ft
Inclusive of 13 sq m Balcony
& 5 sq m AC Ledge

Block 8
#02-23 to #10-23



* Mirror Image ^ High Ceiling

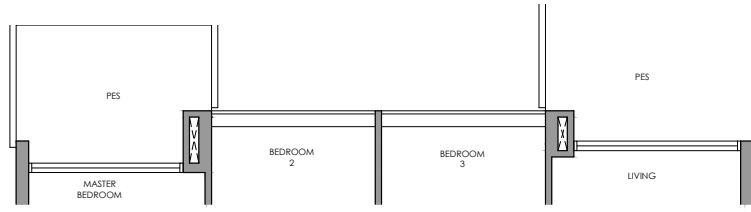


Key plan is not drawn to scale

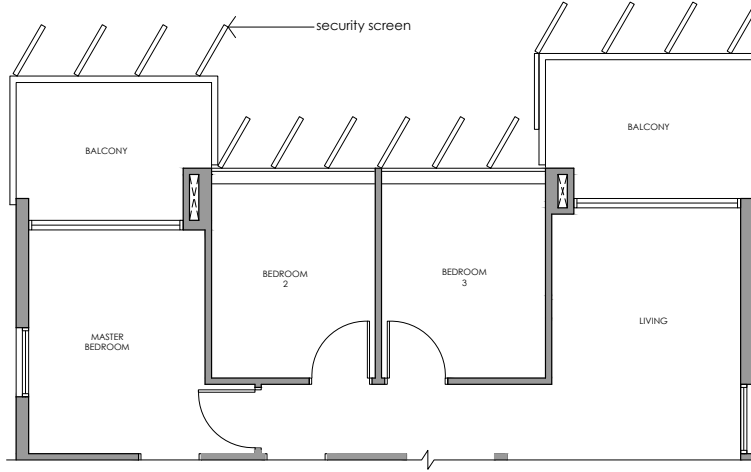
All plans are subject to change as may be required or approved by the relevant authorities. All floor areas are approximate measurements only and are subject to final survey. The balcony shall not be enclosed except with the approved balcony screen. For an illustration of the approved balcony screen, please refer to the diagram annexed hereto as "Annexure 1"

3-Bedroom + Study

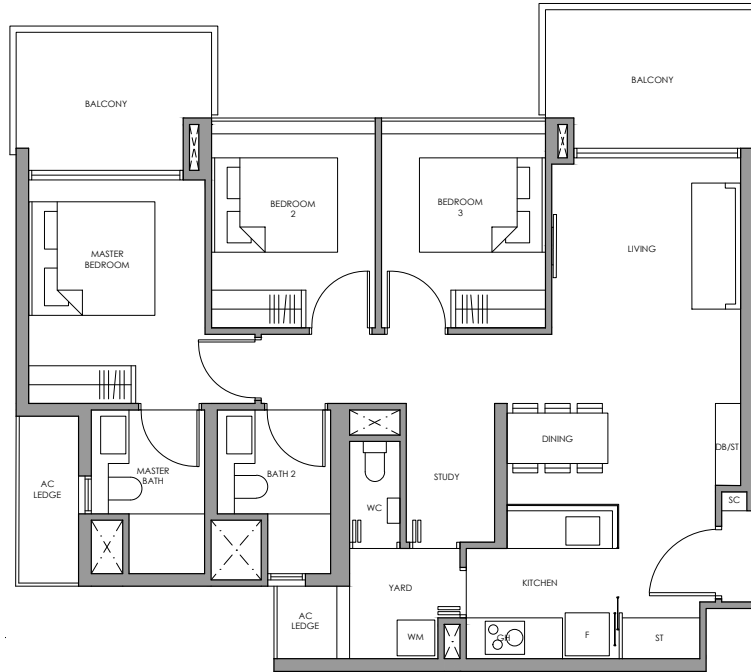
Type CS2(p)



Type CS2
WITH SECURITY SCREEN



Type CS2



- | | |
|----------------------------|-------|
| Fridge | F |
| Gas Hob | GH |
| Shoe Cabinet | SC |
| Washer cum Dryer | WM |
| Distribution Board / Store | DB/ST |



Type CS2(p)

103 sq m / 1109 sq ft
Inclusive of 15 sq m PES
& 5 sq m AC Ledge

Block 10
#01-29

Block 14
#01-48 *

Block 16
#01-58



Type CS2

103 sq m / 1109 sq ft
Inclusive of 15 sq m Balcony
& 5 sq m AC Ledge

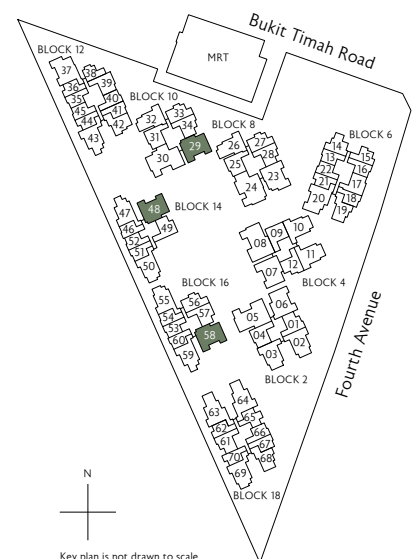
Block 10
#02-29 to #07-29
#08-29 to #10-29 (security screen)

Block 14
#02-48 *^

Block 16
#02-58 ^



* Mirror Image ^ High Ceiling

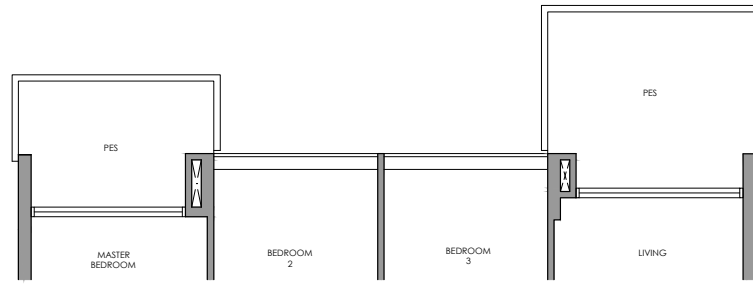


N
Key plan is not drawn to scale

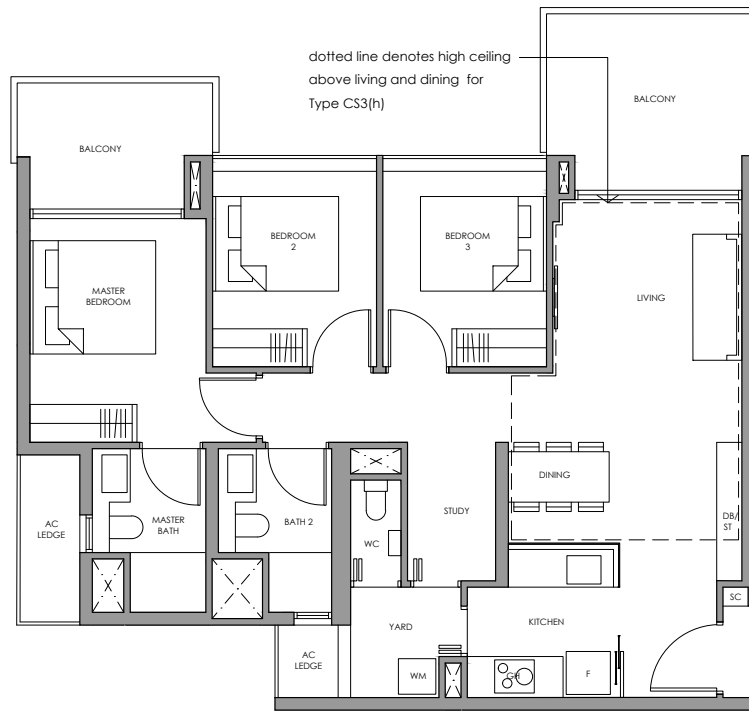
All plans are subject to change as may be required or approved by the relevant authorities. All floor areas are approximate measurements only and are subject to final survey. The balcony shall not be enclosed except with the approved balcony screen. For an illustration of the approved balcony screen, please refer to the diagram annexed hereto as "Annexure 1"

3-Bedroom + Study

Type CS3(p)



Type CS3
Type CS3(h)



- | | |
|----------------------------|-------|
| Fridge | F |
| Gas Hob | GH |
| Shoe Cabinet | SC |
| Washer cum Dryer | WM |
| Distribution Board / Store | DB/ST |

+
Type CS3(p)
105 sq m / 1130 sq ft
Inclusive of 16 sq m PES
& 5 sq m AC Ledge

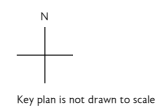
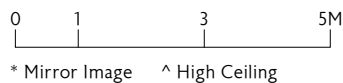
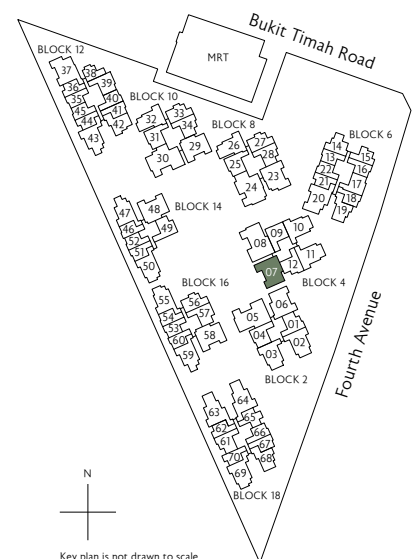
Block 4
#01-07

+
Type CS3
105 sq m / 1130 sq ft
Inclusive of 16 sq m Balcony
& 5 sq m AC Ledge

Block 4
#02-07 to #05-07

+
Type CS3(h)
105 sq m / 1130 sq ft
Inclusive of 16 sq m Balcony
& 5 sq m AC Ledge

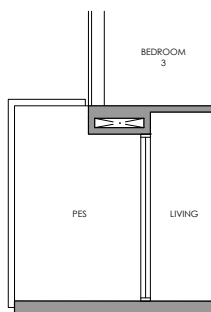
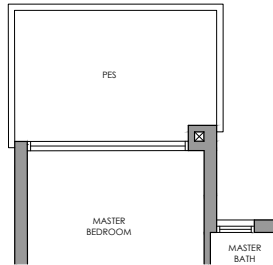
Block 4
#06-07



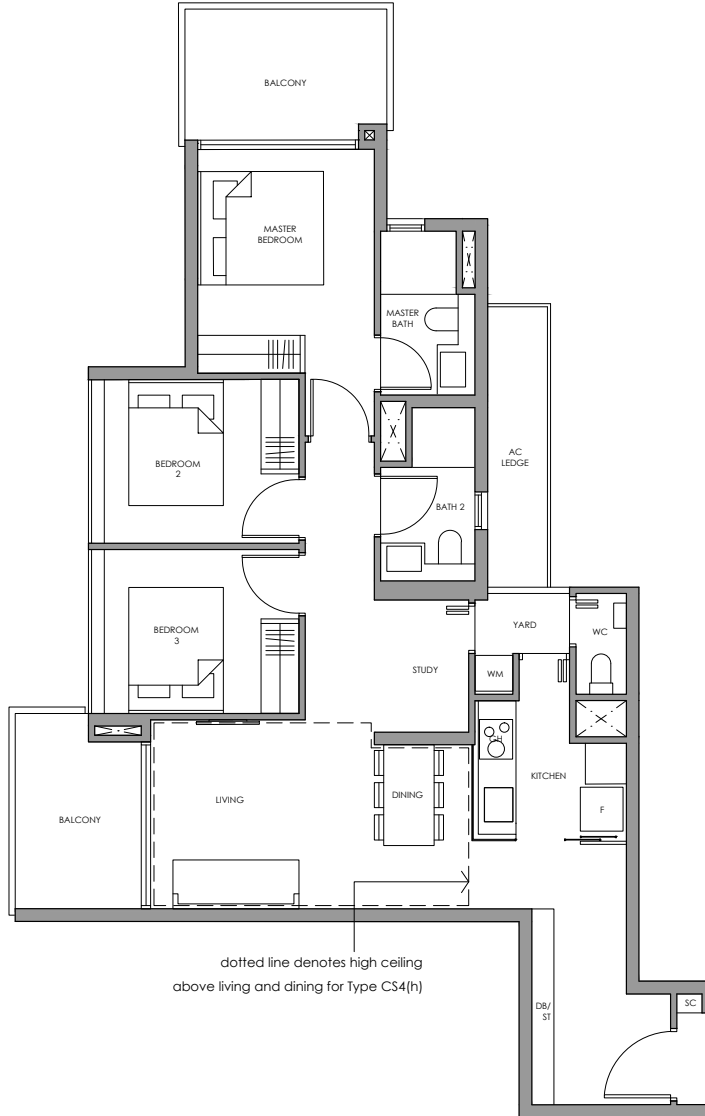
All plans are subject to change as may be required or approved by the relevant authorities. All floor areas are approximate measurements only and are subject to final survey. The balcony shall not be enclosed except with the approved balcony screen. For an illustration of the approved balcony screen, please refer to the diagram annexed hereto as "Annexure 1"

3-Bedroom + Study

Type CS4a(p)



Type CS4a
Type CS4a(h)



- | | |
|----------------------------|-------|
| Fridge | F |
| Gas Hob | GH |
| Shoe Cabinet | SC |
| Washer cum Dryer | WM |
| Distribution Board / Store | DB/ST |



Type CS4a(p)

103 sq m / 1109 sq ft
Inclusive of 14 sq m PES
& 5 sq m AC Ledge

Block 18
#01-63



Type CS4a

103 sq m / 1109 sq ft
Inclusive of 14 sq m Balcony
& 5 sq m AC Ledge

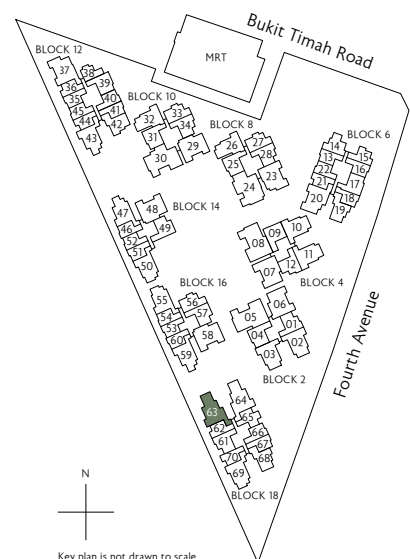
Block 18
#02-63 to #05-63



Type CS4a(h)

103 sq m / 1109 sq ft
Inclusive of 14 sq m Balcony
& 5 sq m AC Ledge

Block 18
#06-63



0 1 3 5M

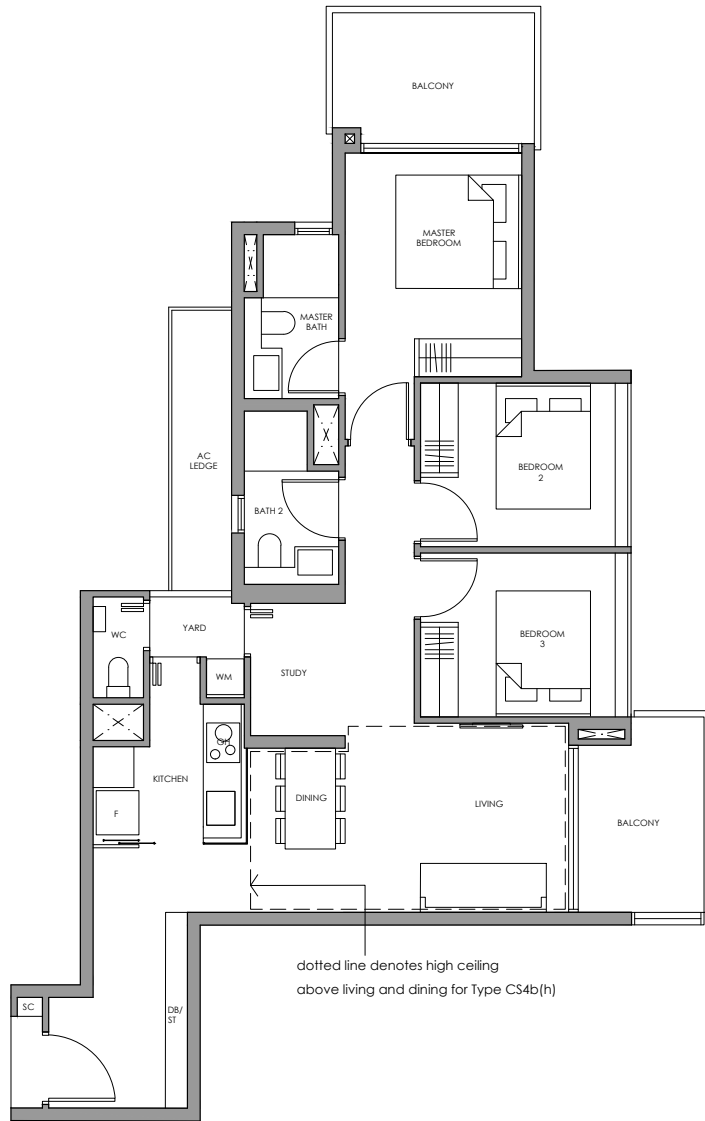
* Mirror Image ^ High Ceiling

N
Key plan is not drawn to scale

All plans are subject to change as may be required or approved by the relevant authorities. All floor areas are approximate measurements only and are subject to final survey. The balcony shall not be enclosed except with the approved balcony screen. For an illustration of the approved balcony screen, please refer to the diagram annexed hereto as "Annexure 1"

3-Bedroom + Study

Type CS4b
Type CS4b(h)



Type CS4b(p)



Fridge	F
Gas Hob	GH
Shoe Cabinet	SC
Washer cum Dryer	WM
Distribution Board / Store	DB/ST

✦
Type CS4b(p)

103 sq m / 1109 sq ft
Inclusive of 14 sq m PES
& 5 sq m AC Ledge

Block 18
#01-64

✦
Type CS4b

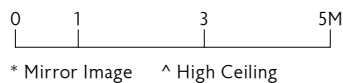
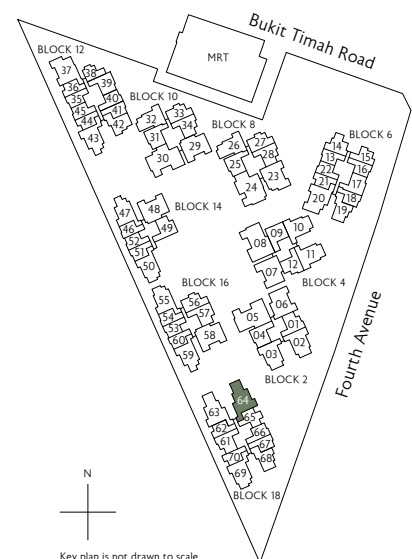
103 sq m / 1109 sq ft
Inclusive of 14 sq m Balcony
& 5 sq m AC Ledge

Block 18
#02-64 to #05-64

✦
Type CS4b(h)

103 sq m / 1109 sq ft
Inclusive of 14 sq m Balcony
& 5 sq m AC Ledge

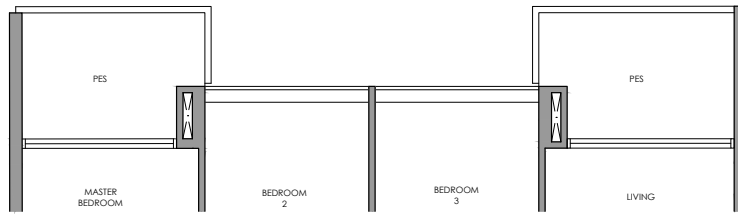
Block 18
#06-64



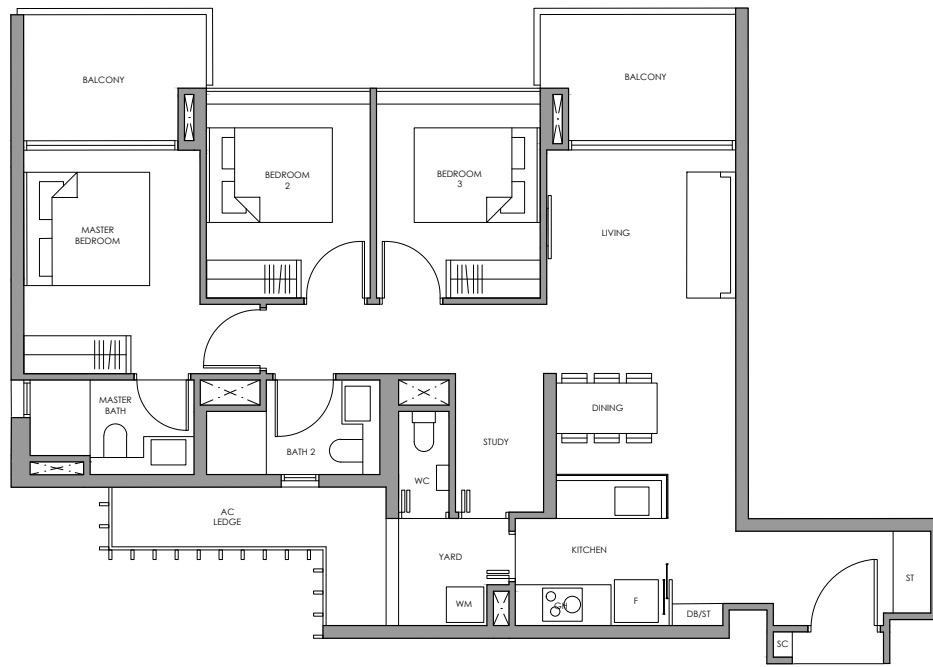
All plans are subject to change as may be required or approved by the relevant authorities. All floor areas are approximate measurements only and are subject to final survey. The balcony shall not be enclosed except with the approved balcony screen. For an illustration of the approved balcony screen, please refer to the diagram annexed hereto as "Annexure 1"

3-Bedroom + Study

Type CS5(p)



Type CS5



- | | |
|----------------------------|-------|
| Fridge | F |
| Gas Hob | GH |
| Shoe Cabinet | SC |
| Washer cum Dryer | WM |
| Distribution Board / Store | DB/ST |



Type CS5(p)

103 sq m / 1109 sq ft
Inclusive of 13 sq m PES
& 6 sq m AC Ledge

Block 6
#01-20



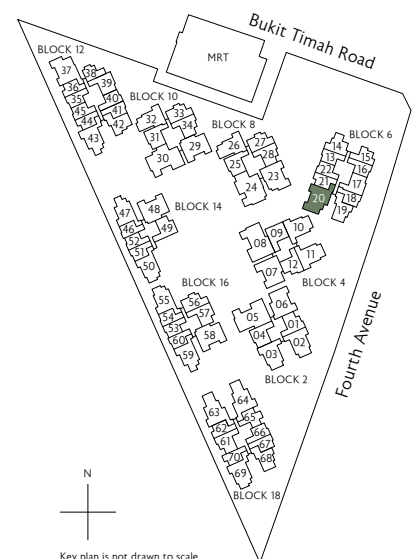
Type CS5

103 sq m / 1109 sq ft
Inclusive of 13 sq m Balcony
& 6 sq m AC Ledge

Block 6
#02-20 to #10-20



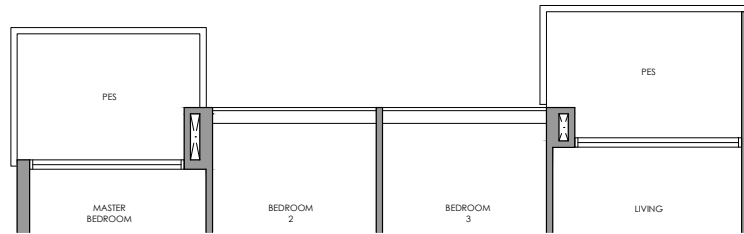
* Mirror Image ^ High Ceiling



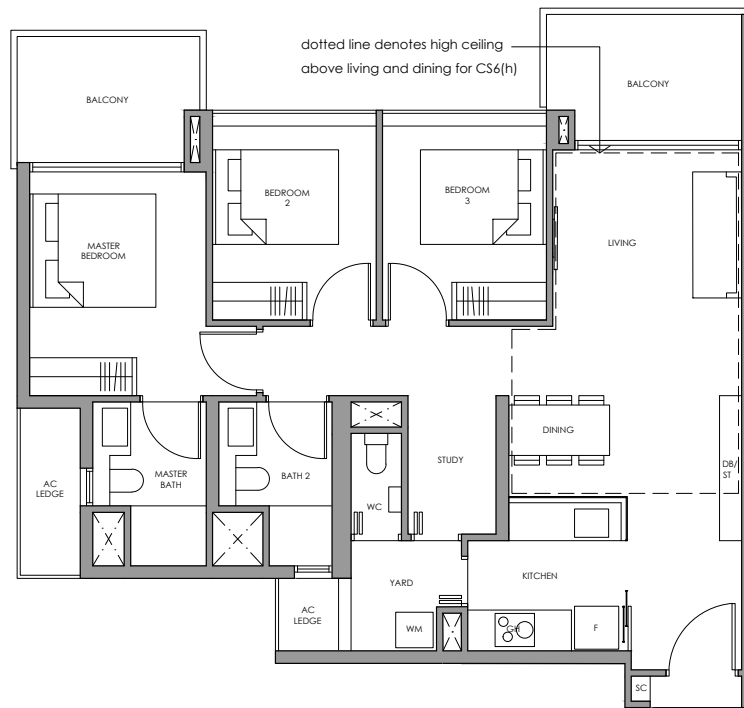
All plans are subject to change as may be required or approved by the relevant authorities. All floor areas are approximate measurements only and are subject to final survey. The balcony shall not be enclosed except with the approved balcony screen. For an illustration of the approved balcony screen, please refer to the diagram annexed hereto as "Annexure 1"

3-Bedroom + Study

Type CS6(p)



Type CS6
Type CS6(h)



- | | |
|----------------------------|-------|
| Fridge | F |
| Gas Hob | GH |
| Shoe Cabinet | SC |
| Washer cum Dryer | WM |
| Distribution Board / Store | DB/ST |

+
Type CS6(p)
103 sq m / 1109 sq ft
Inclusive of 13 sq m PES
& 5 sq m AC Ledge

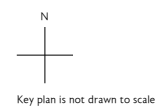
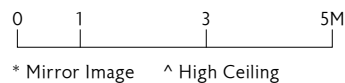
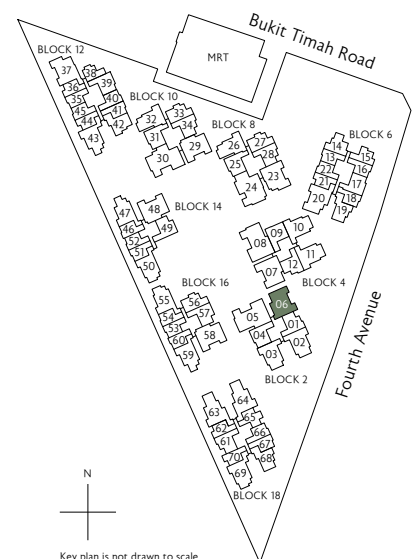
Block 2
#01-06

+
Type CS6
103 sq m / 1109 sq ft
Inclusive of 13 sq m Balcony
& 5 sq m AC Ledge

Block 2
#02-06 to #05-06

+
Type CS6(h)
103 sq m / 1109 sq ft
Inclusive of 13 sq m Balcony
& 5 sq m AC Ledge

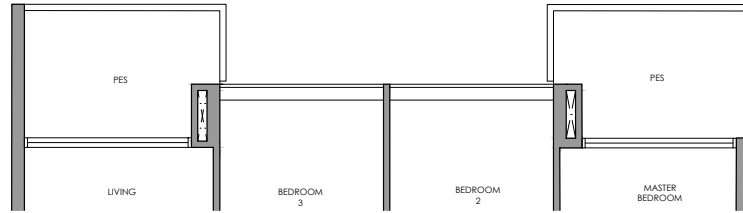
Block 2
#06-06



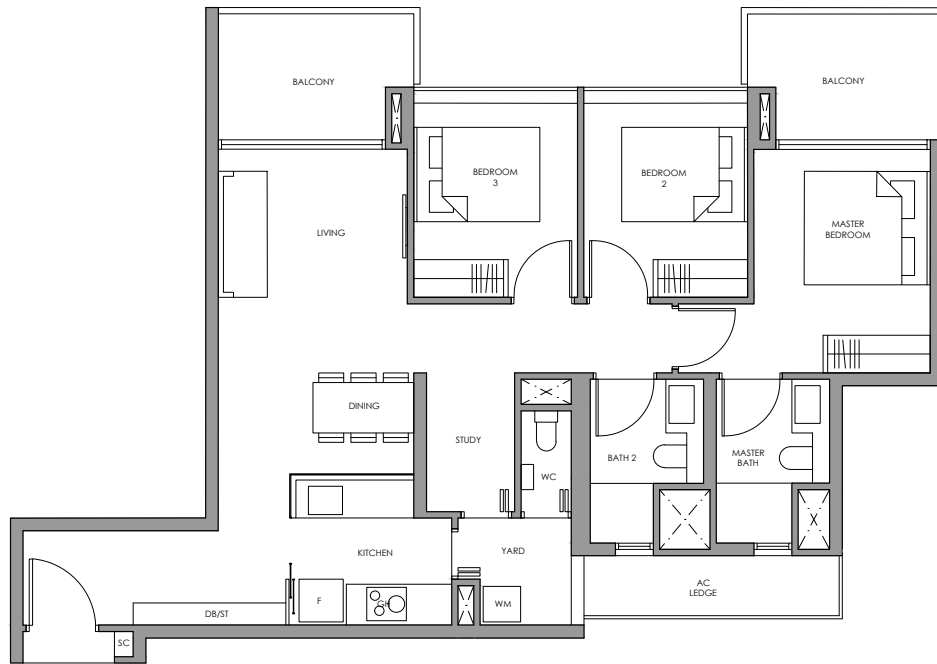
All plans are subject to change as may be required or approved by the relevant authorities. All floor areas are approximate measurements only and are subject to final survey. The balcony shall not be enclosed except with the approved balcony screen. For an illustration of the approved balcony screen, please refer to the diagram annexed hereto as "Annexure 1"

3-Bedroom + Study

Type CS7(p)



Type CS7



- | | |
|----------------------------|-------|
| Fridge | F |
| Gas Hob | GH |
| Shoe Cabinet | SC |
| Washer cum Dryer | WM |
| Distribution Board / Store | DB/ST |



Type CS7(p)

104 sq m / 1119 sq ft
Inclusive of 13 sq m PES
& 5 sq m AC Ledge

Block 12
#01-37



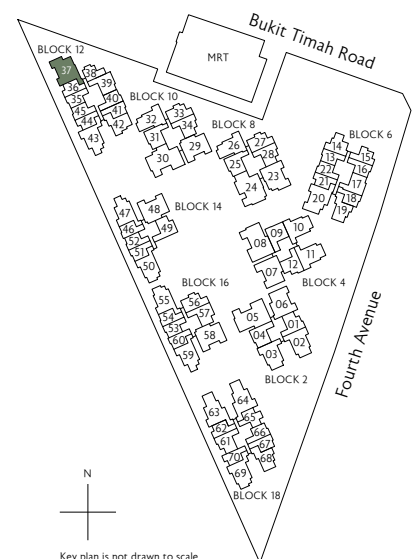
Type CS7

104 sq m / 1119 sq ft
Inclusive of 13 sq m Balcony
& 5 sq m AC Ledge

Block 12
#02-37 to #10-37

0 1 3 5M

* Mirror Image ^ High Ceiling

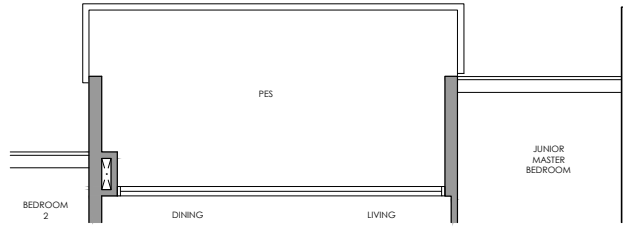


N
Key plan is not drawn to scale

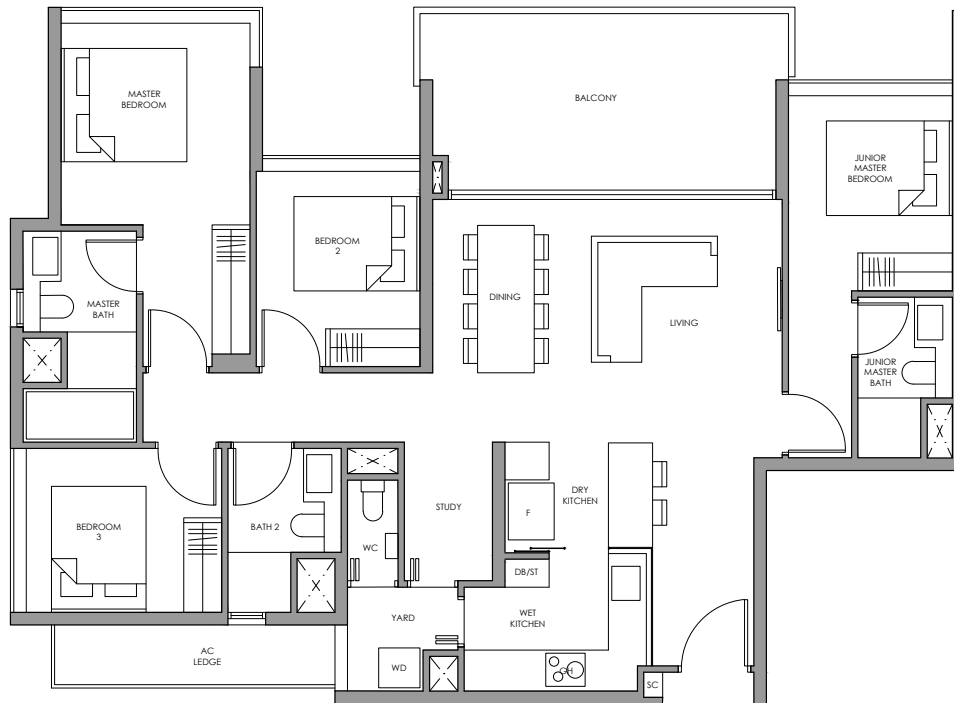
All plans are subject to change as may be required or approved by the relevant authorities. All floor areas are approximate measurements only and are subject to final survey. The balcony shall not be enclosed except with the approved balcony screen. For an illustration of the approved balcony screen, please refer to the diagram annexed hereto as "Annexure 1"

4-Bedroom + Study

Type DS1(p)



Type DS1



- | | |
|----------------------------|-------|
| Fridge | F |
| Gas Hob | GH |
| Shoe Cabinet | SC |
| Washer and Dryer | WD |
| Distribution Board / Store | DB/ST |



Type DS1(p)

137 sq m / 1475 sq ft
Inclusive of 17 sq m PES
& 5 sq m AC Ledge

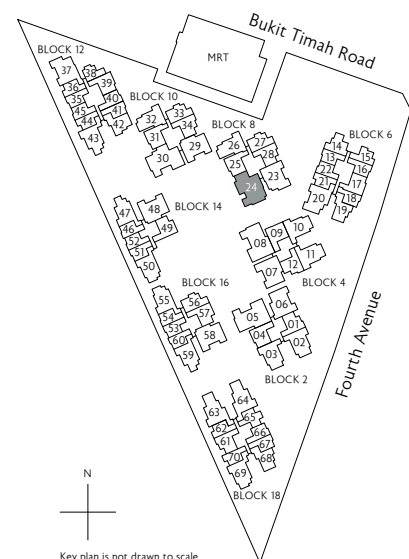
Block 8
#01-24



Type DS1

137 sq m / 1475 sq ft
Inclusive of 17 sq m Balcony
& 5 sq m AC Ledge

Block 8
#02-24 to #06-24



* Mirror Image ^ High Ceiling

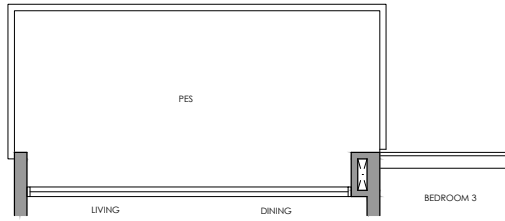


Key plan is not drawn to scale

All plans are subject to change as may be required or approved by the relevant authorities. All floor areas are approximate measurements only and are subject to final survey. The balcony shall not be enclosed except with the approved balcony screen. For an illustration of the approved balcony screen, please refer to the diagram annexed hereto as "Annexure 1"

4-Bedroom + Study

Type DS2(p)



Type DS2



- | | |
|----------------------------|-------|
| Fridge | F |
| Gas Hob | GH |
| Shoe Cabinet | SC |
| Washer and Dryer | WD |
| Distribution Board / Store | DB/ST |



Type DS2(p)

139 sq m / 1496 sq ft
Inclusive of 17 sq m PES
& 5 sq m AC Ledge

Block 10
#01-30



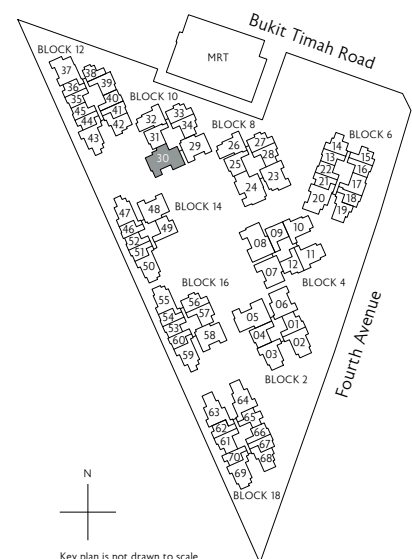
Type DS2

139 sq m / 1496 sq ft
Inclusive of 17 sq m Balcony
& 5 sq m AC Ledge

Block 10
#02-30 to #06-30



* Mirror Image ^ High Ceiling

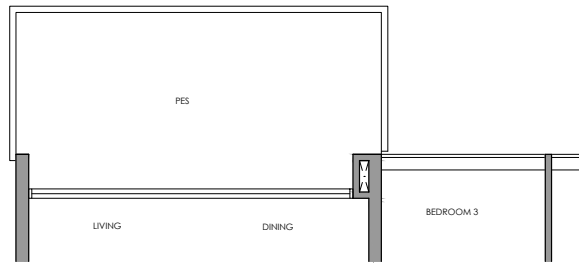


N
Key plan is not drawn to scale

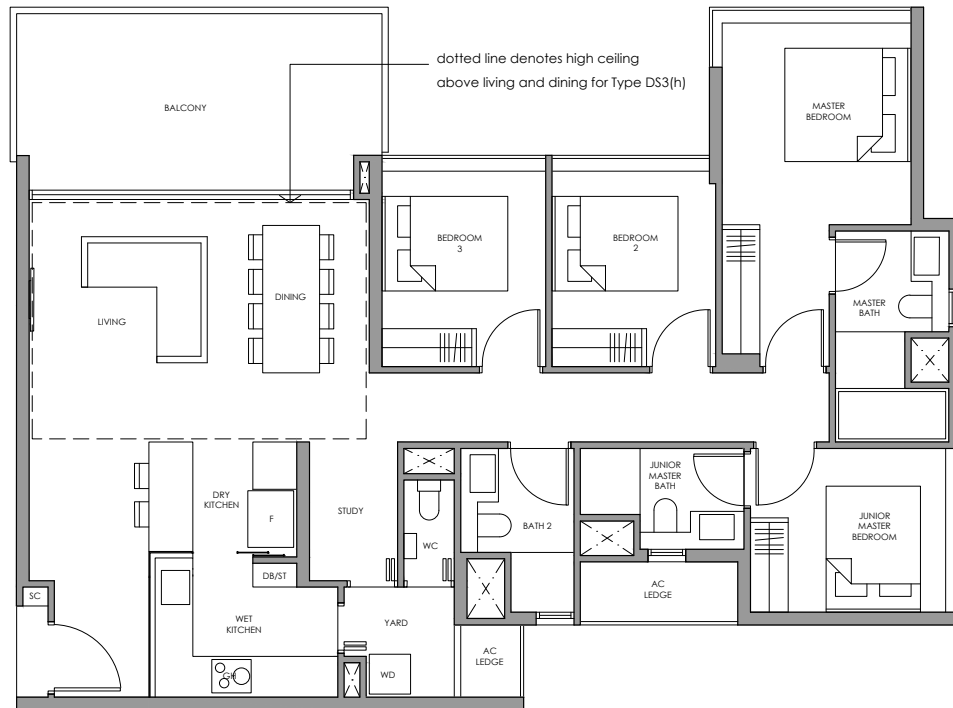
All plans are subject to change as may be required or approved by the relevant authorities. All floor areas are approximate measurements only and are subject to final survey. The balcony shall not be enclosed except with the approved balcony screen. For an illustration of the approved balcony screen, please refer to the diagram annexed hereto as "Annexure 1"

4-Bedroom + Study

Type DS3(p)



Type DS3
Type DS3(h)



- | | |
|----------------------------|-------|
| Fridge | F |
| Gas Hob | GH |
| Shoe Cabinet | SC |
| Washer and Dryer | WD |
| Distribution Board / Store | DB/ST |

✦
Type DS3(p)
138 sq m / 1485 sq ft
Inclusive of 17 sq m PES
& 4 sq m AC Ledge

Block 2
#01-05 *

Block 4
#01-08

✦
Type DS3
138 sq m / 1485 sq ft
Inclusive of 17 sq m Balcony
& 4 sq m AC Ledge

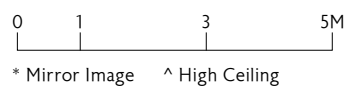
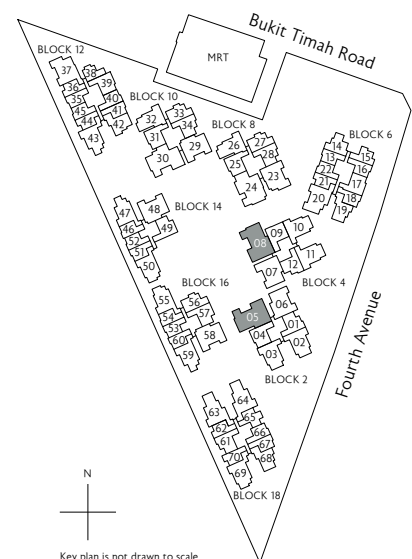
Block 2
#02-05 to #05-05 *

Block 4
#02-08 to #05-08

✦
Type DS3(h)
138 sq m / 1485 sq ft
Inclusive of 17 sq m Balcony
& 4 sq m AC Ledge

Block 2
#06-05 *

Block 4
#06-08



All plans are subject to change as may be required or approved by the relevant authorities. All floor areas are approximate measurements only and are subject to final survey. The balcony shall not be enclosed except with the approved balcony screen. For an illustration of the approved balcony screen, please refer to the diagram annexed hereto as "Annexure 1"