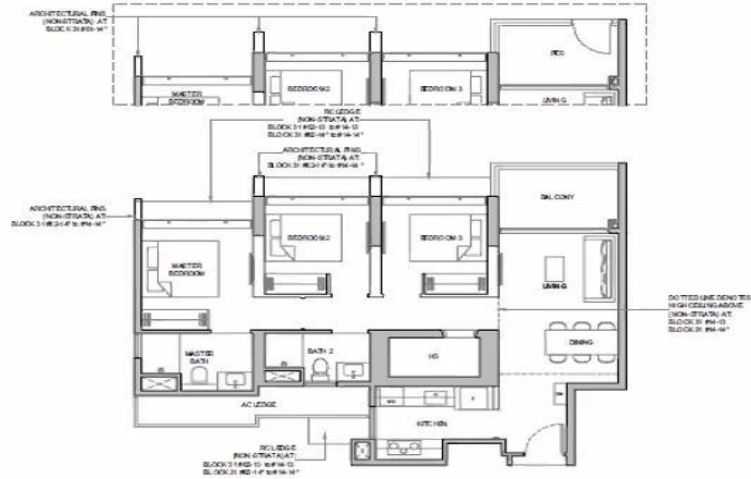


### 3 Bedroom

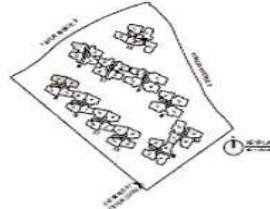
**TYPE C3-P**  
 Area: 90 sq m / 969 sq ft  
 Block 31 #01-13  
 Block 31 #01-14'

**TYPE C3**  
 Area: 90 sq m / 969 sq ft  
 Block 31 #02-13 to #13-13  
 Block 31 #02-14' to #13-14'

**TYPE C3-H**  
 Area: 90 sq m / 969 sq ft  
 Block 31 #14-13  
 Block 31 #14-14'



■ Wall installation to be tracked or altered  
 PES Private Enclosed Space  
 RC Reinforced Concrete  
 DB Distribution Board  
 F Fridge (not included)  
 W Washer Dryer (not included)  
 HS Handheld Shelter  
 AC Air-Conditioner  
 ST Storage  
 \*Mirror Image  
 0 1 2 3 4 5M  
 Areas include AC, Balcony and PES where applicable. The plans are subjected to change as may be required by relevant authorities. All areas and measurements are a best estimate and subject to final survey.



### 3 Bedroom with Utility, Yard and Study

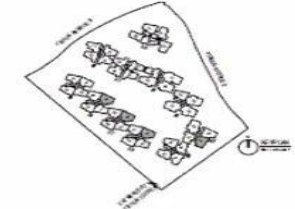
**TYPE CS5b-P**  
 Area: 100 sq m / 1076 sq ft  
 Block 27 #01-06  
 Block 29 #01-10  
 Block 43 #01-40

**TYPE CS5b**  
 Area: 100 sq m / 1076 sq ft  
 Block 25 #03-02 to #13-02  
 Block 27 #02-06 to #13-06  
 Block 29 #02-10 to #13-10  
 Block 43 #02-40 to #13-40

**TYPE CS5b-H**  
 Area: 100 sq m / 1076 sq ft  
 Block 25 #14-02  
 Block 27 #14-06  
 Block 29 #14-10  
 Block 43 #14-40



■ Wall installation to be tracked or altered  
 PES Private Enclosed Space  
 RC Reinforced Concrete  
 DB Distribution Board  
 F Fridge (not included)  
 W Washer Dryer (not included)  
 HS Handheld Shelter  
 AC Air-Conditioner  
 ST Storage  
 WC Water Closet  
 \*Mirror Image  
 0 1 2 3 4 5M  
 Areas include AC, Balcony and PES where applicable. The plans are subjected to change as may be required by relevant authorities. All areas and measurements are a best estimate and subject to final survey.



overview | unit plan

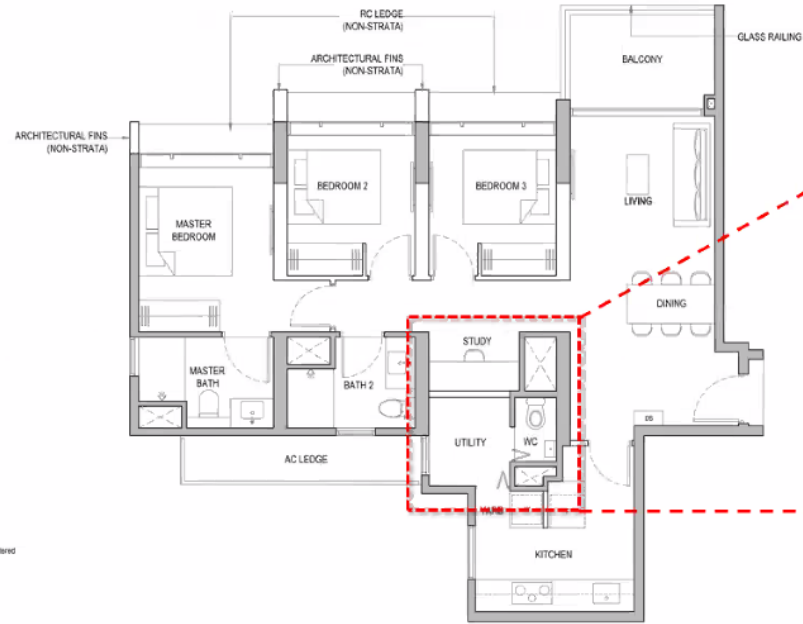
**\*\*All Info Are Subject To Developer Final Changes Without Prior Notice.**

# UNIT PLAN – FLEXIBILITY

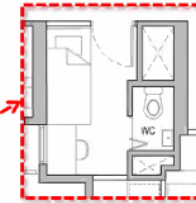
## FLEXIBLE, ADAPTABLE UNITS WITH LIFE CHANGE:

**APPLICABLE TO UNIT**  
**TYPE CS3-P Block 35**  
**CS3 Stack 22**  
**CS3-H**

WORK FROM HOME  
 STUDY ROOM  
 HOME OFFICE  
 MASTER CHEF  
 BABY ROOM  
 EXPANDED WARDROBE  
 HOBBY ROOM



**POSSIBLE FLEXIBILITY - 1**  
 ( TO BE DONE BY PURCHASER )



**GUEST ROOM**

**POSSIBLE FLEXIBILITY - 2**  
 ( TO BE DONE BY PURCHASER )



**UNIVERSAL ROOM**  
**STUDY/HOBBY ROOM**  
**WITH DUAL ACCESS**

- Wall not allowed to be hacked or altered
- PES Private Enclosed Space
- RC Reinforced Concrete
- DB Clear/Obtain Board
- F Fridge (not included)
- W Washer (not included)
- HS Household Shelter
- AC Air Conditioner
- ST Storage



Areas include AC ledge, balcony, PES and strata void where applicable. The plans are subjected to change as may be required by relevant authorities. All areas and measurements stated herein as approximate and subject to final survey.



flexible layout | *unit plans*

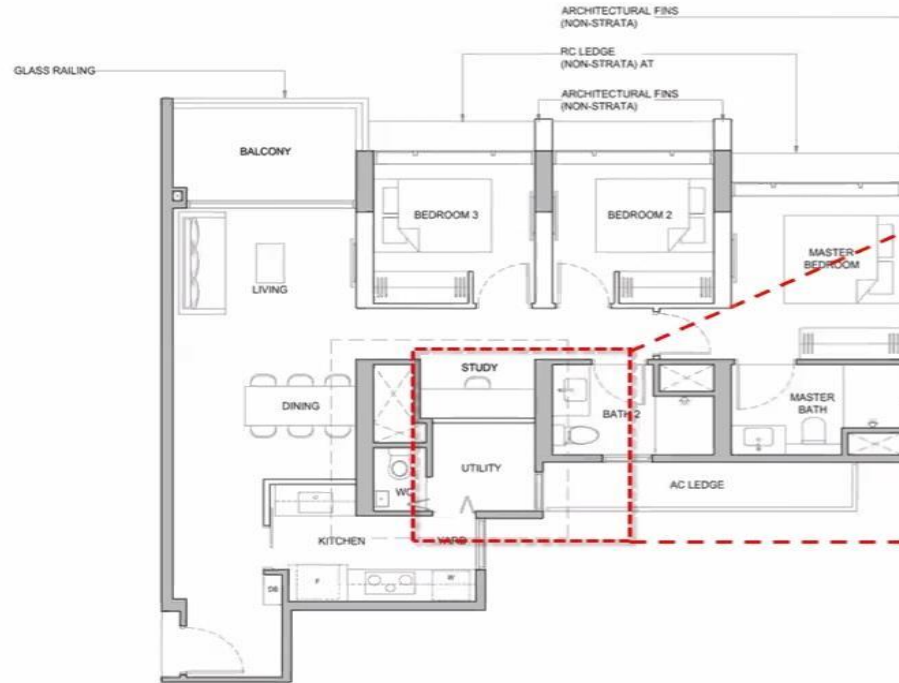
**\*\*All Info Are Subject To Developer Final Changes Without Prior Notice.**

# UNIT PLAN – FLEXIBILITY

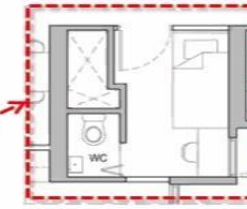
## FLEXIBLE, ADAPTABLE UNITS WITH LIFE CHANGE:

**APPLICABLE TO UNIT**  
**TYPE CS4-P** Block 35  
**CS4** Stack 22  
**CS4-H**

WORK FROM HOME  
 STUDY ROOM  
 HOME OFFICE  
 MASTER CHEF  
 BABY ROOM  
 EXPANDED WARDROBE  
 HOBBY ROOM

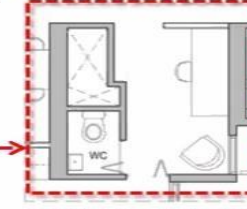


**POSSIBLE FLEXIBILITY - 1**  
 ( TO BE DONE BY PURCHASER )



**GUEST ROOM**

**POSSIBLE FLEXIBILITY - 2**  
 ( TO BE DONE BY PURCHASER )



**UNIVERSAL ROOM**  
**STUDY/HOBBY ROOM**  
**WITH DUAL ACCESS**

- █ Wall not allowed to be hacked or altered.
- PES Private Enclosed Space
- RC Reinforced Concrete
- DB Distribution Board
- F Fridge (not included)
- W Washer (not included)
- HS Household Shelter
- AC Air-Conditioner
- ST Storage



Areas include AC ledge, balcony, PES and strata void where applicable. The plans are subjected to change as may be required by relevant authorities. All areas and measurements stated herein as approximate and subject to final survey.



flexible layout | *unit plans*

**\*\*All Info Are Subject To Developer Final Changes Without Prior Notice.**

## 4 Bedroom

### TYPE D4-P

Area: 129 sq m / 1389 sq ft  
Block 39 #01-32

### TYPE D4

Area: 129 sq m / 1389 sq ft  
Block 39 #02-32 to #13-32

### TYPE D4-H

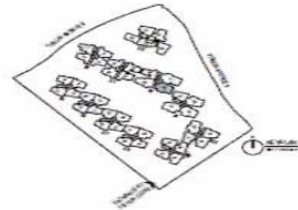
Area: 129 sq m / 1389 sq ft  
Block 39 #14-32



- Wall notations to be fabricated
- PEB Private Enclosed Space
- RC Reinforced Concrete
- DB Distribution Board
- F Fridge (not included)
- WD Washer Dryer (not included)
- HS Handshower
- AC Air-Conditioner
- ST Storage
- WC Water Closet

0 1 2 3 4 M

Areas indicate AC Ridge, Bakery and PEB where applicable. The plans are subject to change as may be required by various authorities. All areas and measurements listed herein are approximate and subject to final survey.



overview | unit plan

**\*\*All Info Are Subject To Developer Final Changes Without Prior Notice.**

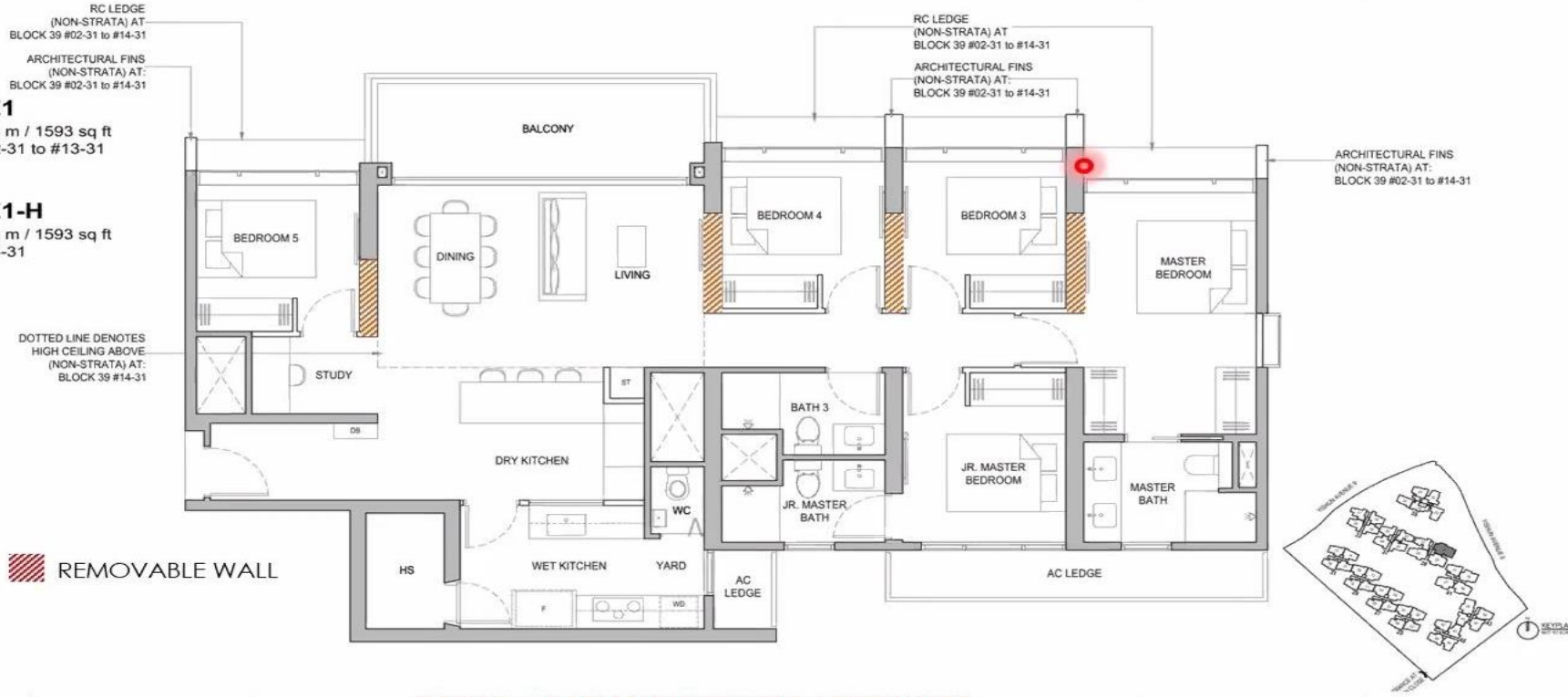
# UNIT PLAN – FLEXIBILITY

## TYPE E1

Area: 148 sq m / 1593 sq ft  
Block 39 #02-31 to #13-31

## TYPE E1-H

Area: 148 sq m / 1593 sq ft  
Block 39 #14-31



### FLEXIBLE, ADAPTABLE UNITS WITH LIFE CHANGE:

- WORK FROM HOME
- STUDY ROOM
- HOME OFFICE
- MASTER CHEF
- BABY ROOM
- EXPANDED WARDROBE
- HOBBY ROOM



flexible layout | *unit plans*

\*\*All Info Are Subject To Developer Final Changes Without Prior Notice.