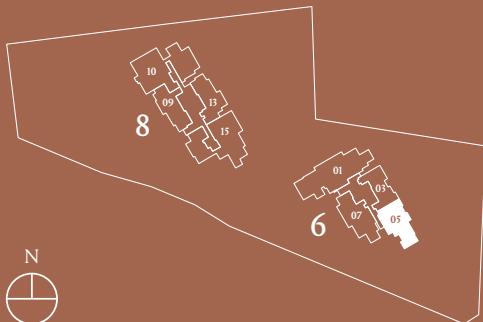
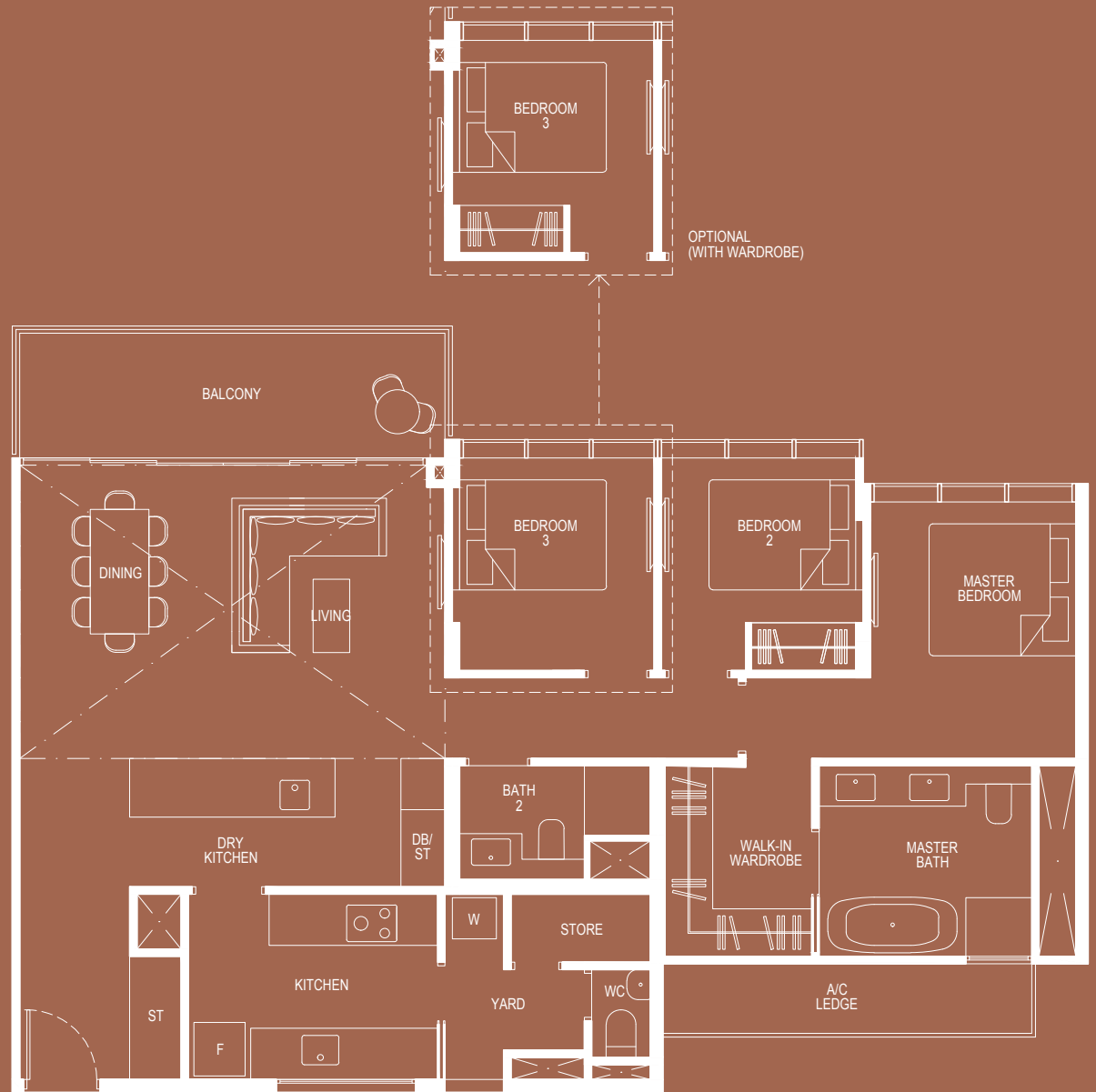


3 - BEDROOM DELUXE PENTHOUSE

Type 3D3-PH

152 sqm (include 5 sqm A/C Ledge, 11 sqm Balcony,
25 sqm Void)

Unit(s): #23-05



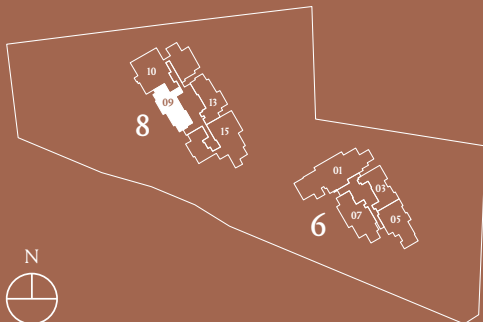
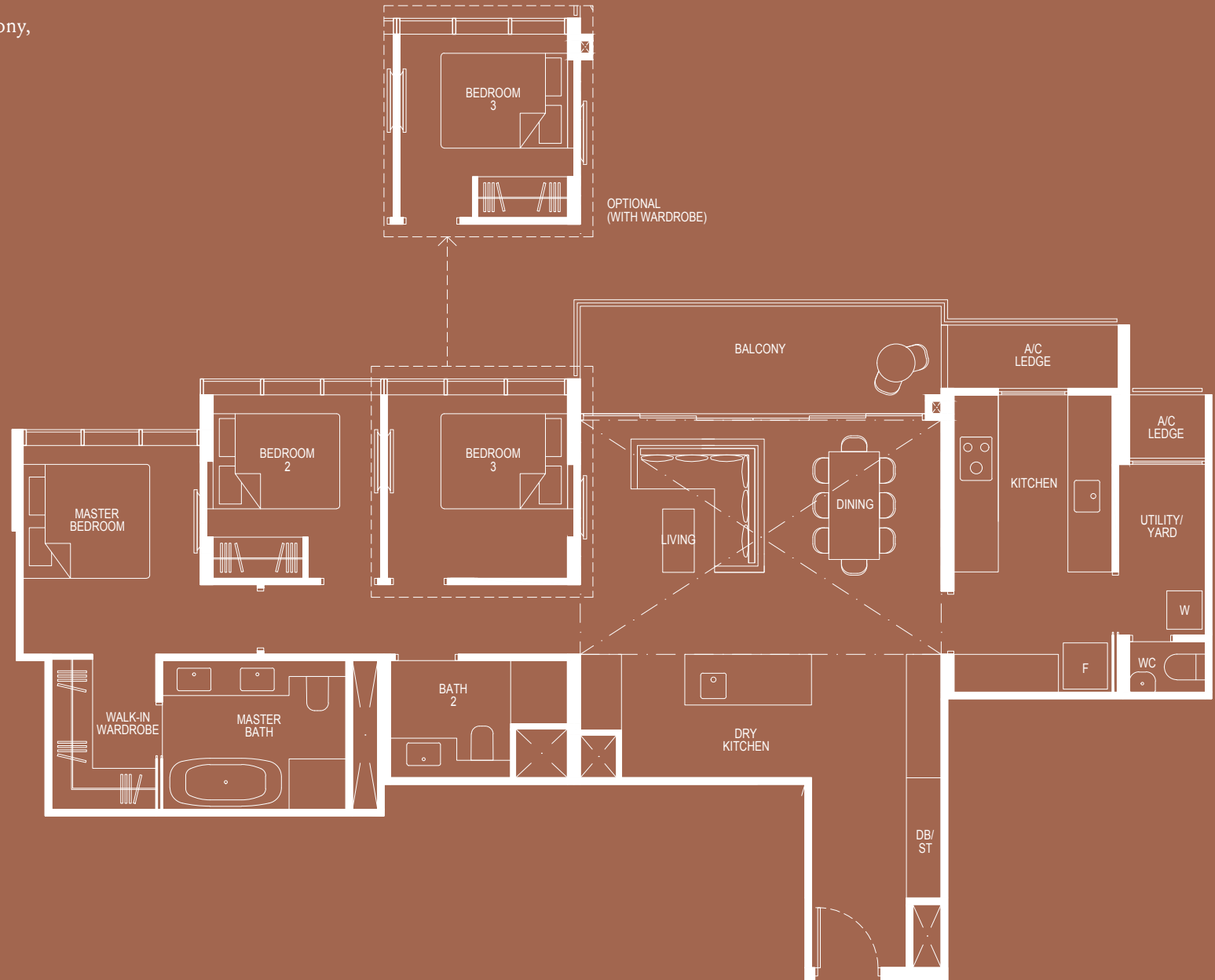
Plans are subject to change/amendments as may be required and/or approved by the Developer and/or the relevant authorities and do not form part of any offer or contract. These are not drawn to scale and are for the purpose of visual presentation only. The balcony shall not be enclosed unless with the approved balcony screen. For an illustration of the approved balcony screen, please refer to APPROVED BALCONY SCREEN DESIGN page of this brochure.

3 - BEDROOM DELUXE PENTHOUSE

Type 3D4-PH

148 sqm (include 5 sqm A/C Ledge, 10 sqm Balcony,
22 sqm Void)

Unit(s): #23-09



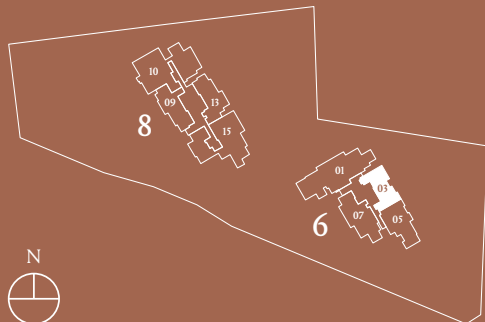
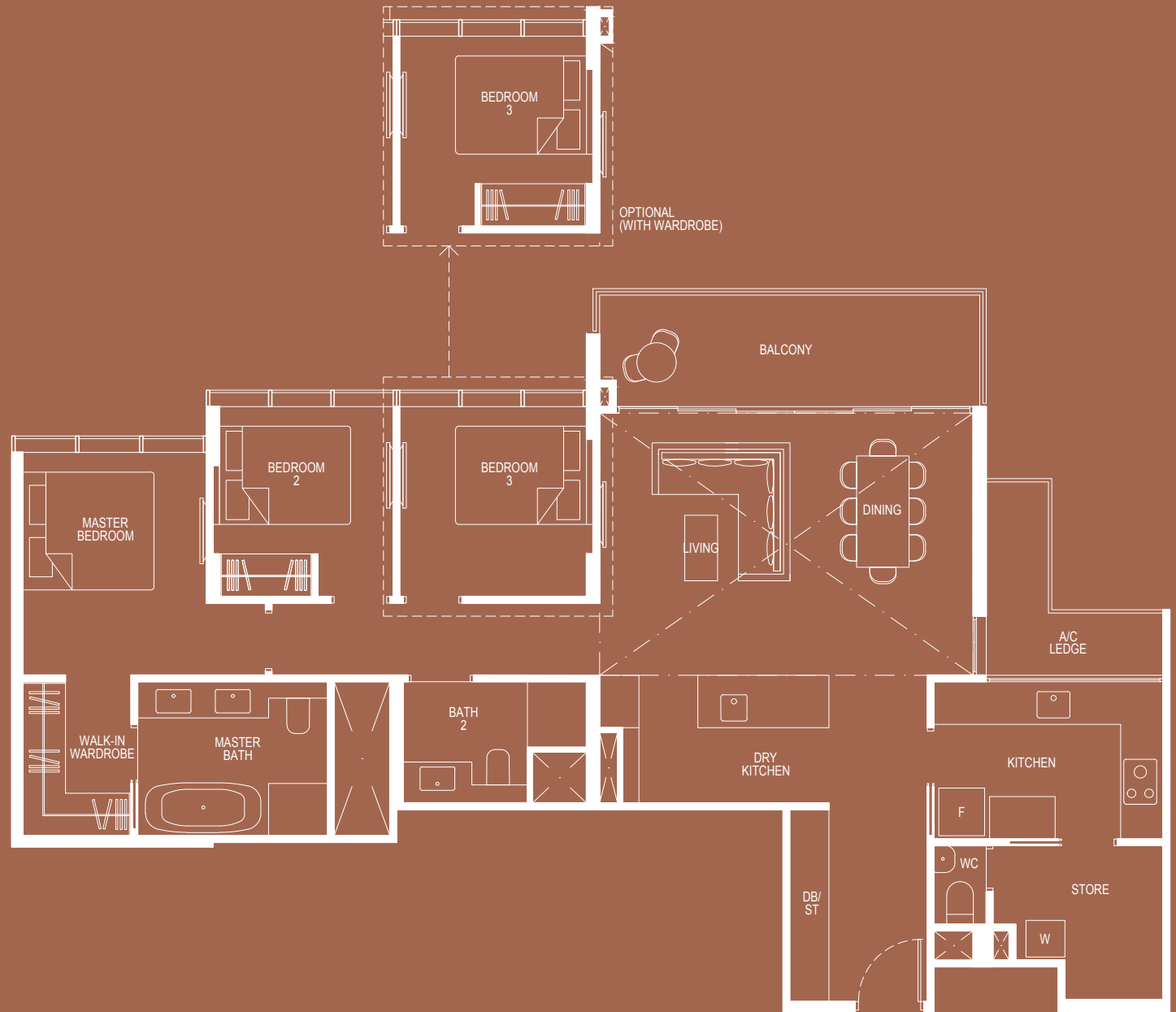
Plans are subject to change/amendments as may be required and/or approved by the Developer and/or the relevant authorities and do not form part of any offer or contract. These are not drawn to scale and are for the purpose of visual presentation only. The balcony shall not be enclosed unless with the approved balcony screen. For an illustration of the approved balcony screen, please refer to APPROVED BALCONY SCREEN DESIGN page of this brochure.

3 - BEDROOM DELUXE PENTHOUSE

Type 3D5-PH

150 sqm (include 5 sqm A/C Ledge, 11 sqm Balcony, 24 sqm Void)

Unit(s): #23-03



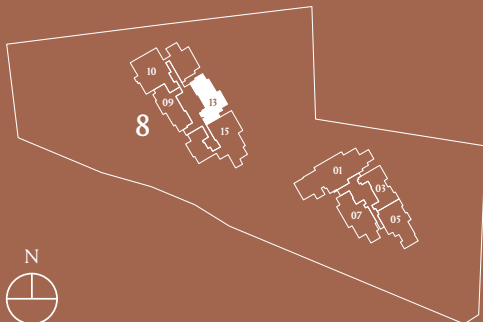
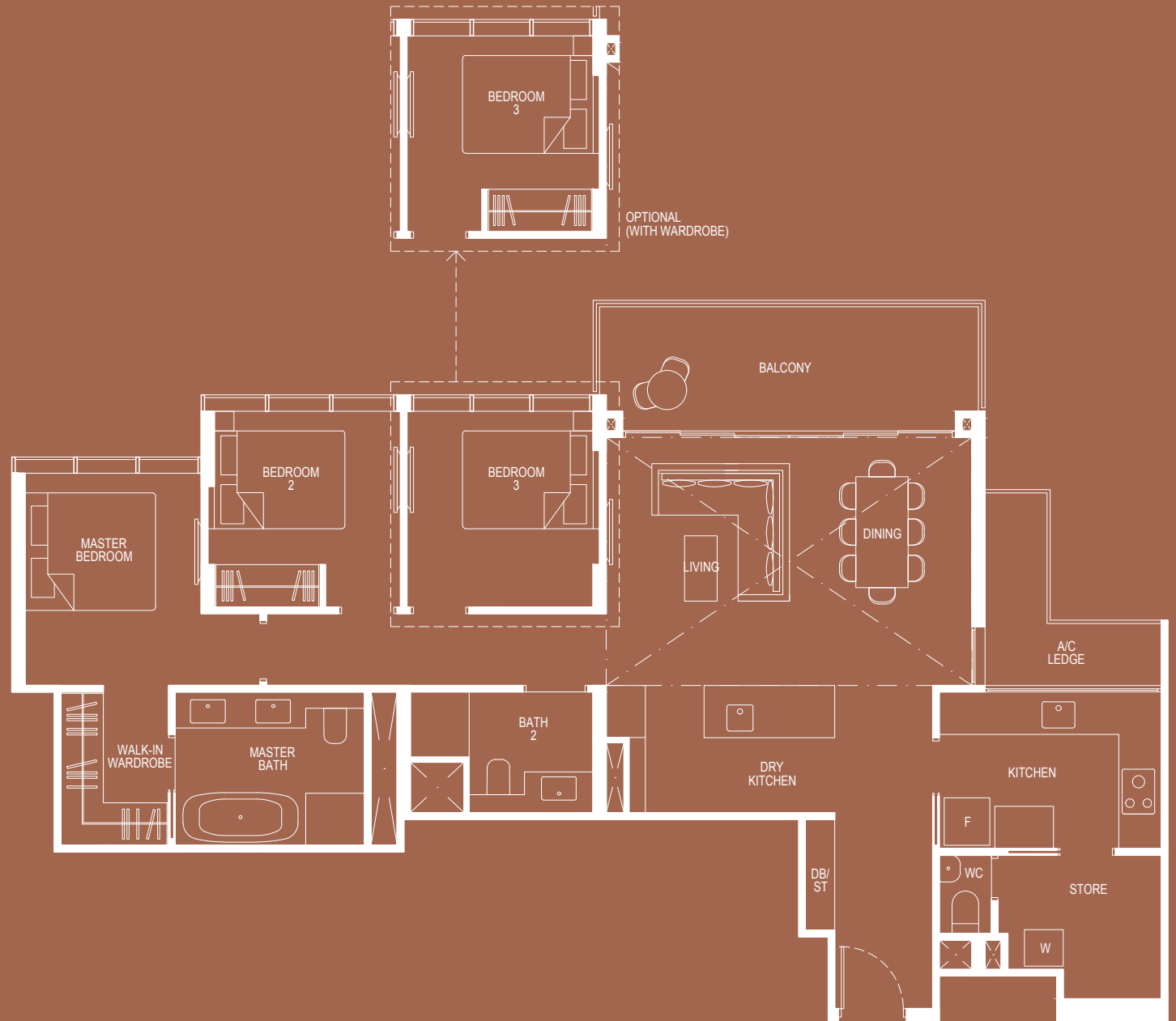
Plans are subject to change/amendments as may be required and/or approved by the Developer and/or the relevant authorities and do not form part of any offer or contract. These are not drawn to scale and are for the purpose of visual presentation only. The balcony shall not be enclosed unless with the approved balcony screen. For an illustration of the approved balcony screen, please refer to APPROVED BALCONY SCREEN DESIGN page of this brochure.

3 - BEDROOM DELUXE PENTHOUSE

Type 3D6-PH

148 sqm (include 5 sqm A/C Ledge, 12 sqm Balcony, 23 sqm Void)

Unit(s): #23-13



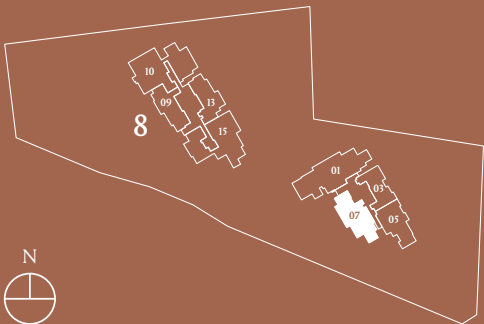
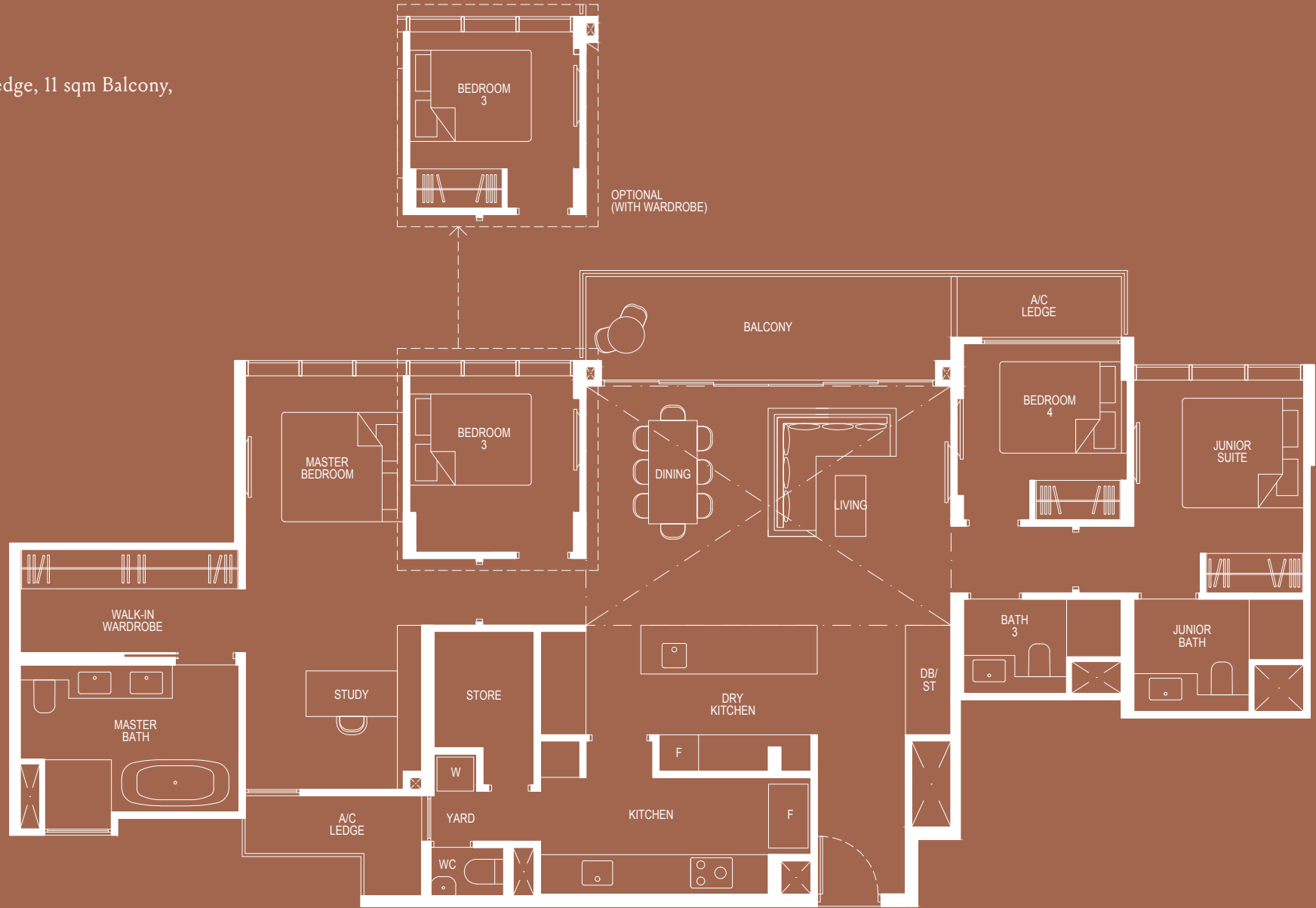
Plans are subject to change/amendments as may be required and/or approved by the Developer and/or the relevant authorities and do not form part of any offer or contract. These are not drawn to scale and are for the purpose of visual presentation only. The balcony shall not be enclosed unless with the approved balcony screen. For an illustration of the approved balcony screen, please refer to APPROVED BALCONY SCREEN DESIGN page of this brochure.

4 - BEDROOM DELUXE PENTHOUSE

Type 4D4-PH

185 sqm (include 7 sqm A/C Ledge, 11 sqm Balcony, 25 sqm Void)

Unit(s): #23-07



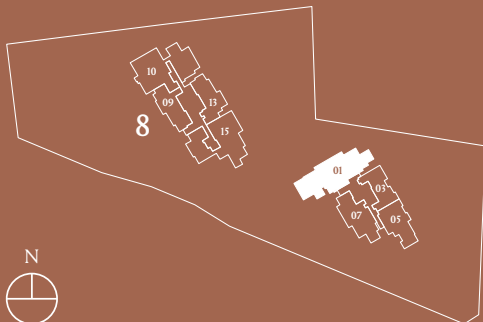
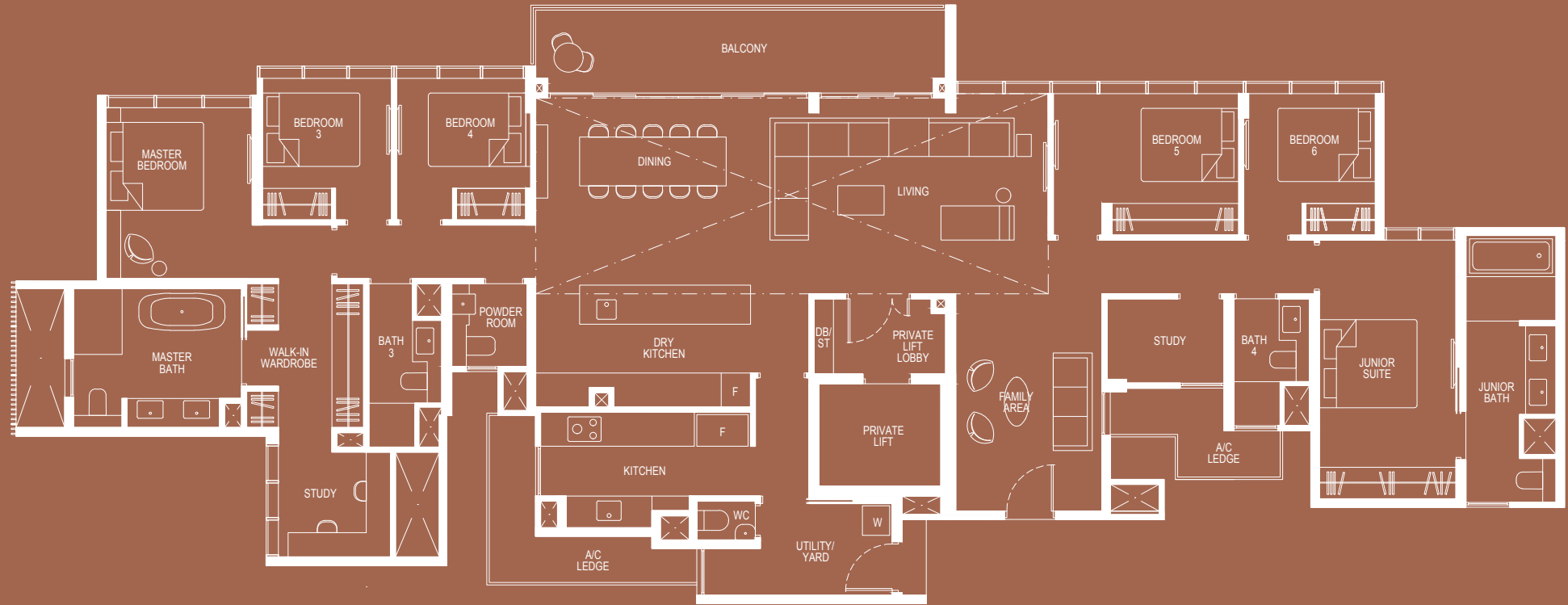
Plans are subject to change/amendments as may be required and/or approved by the Developer and/or the relevant authorities and do not form part of any offer or contract. These are not drawn to scale and are for the purpose of visual presentation only. The balcony shall not be enclosed unless with the approved balcony screen. For an illustration of the approved balcony screen, please refer to APPROVED BALCONY SCREEN DESIGN page of this brochure.

PREMIER PENTHOUSE

PH1

302 sqm (include 12 sqm A/C Ledge, 15 sqm Balcony, 44 sqm Void)

Unit(s): #23-01



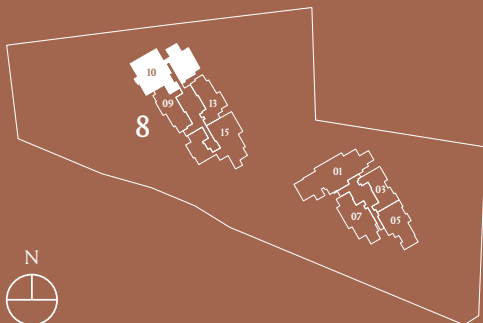
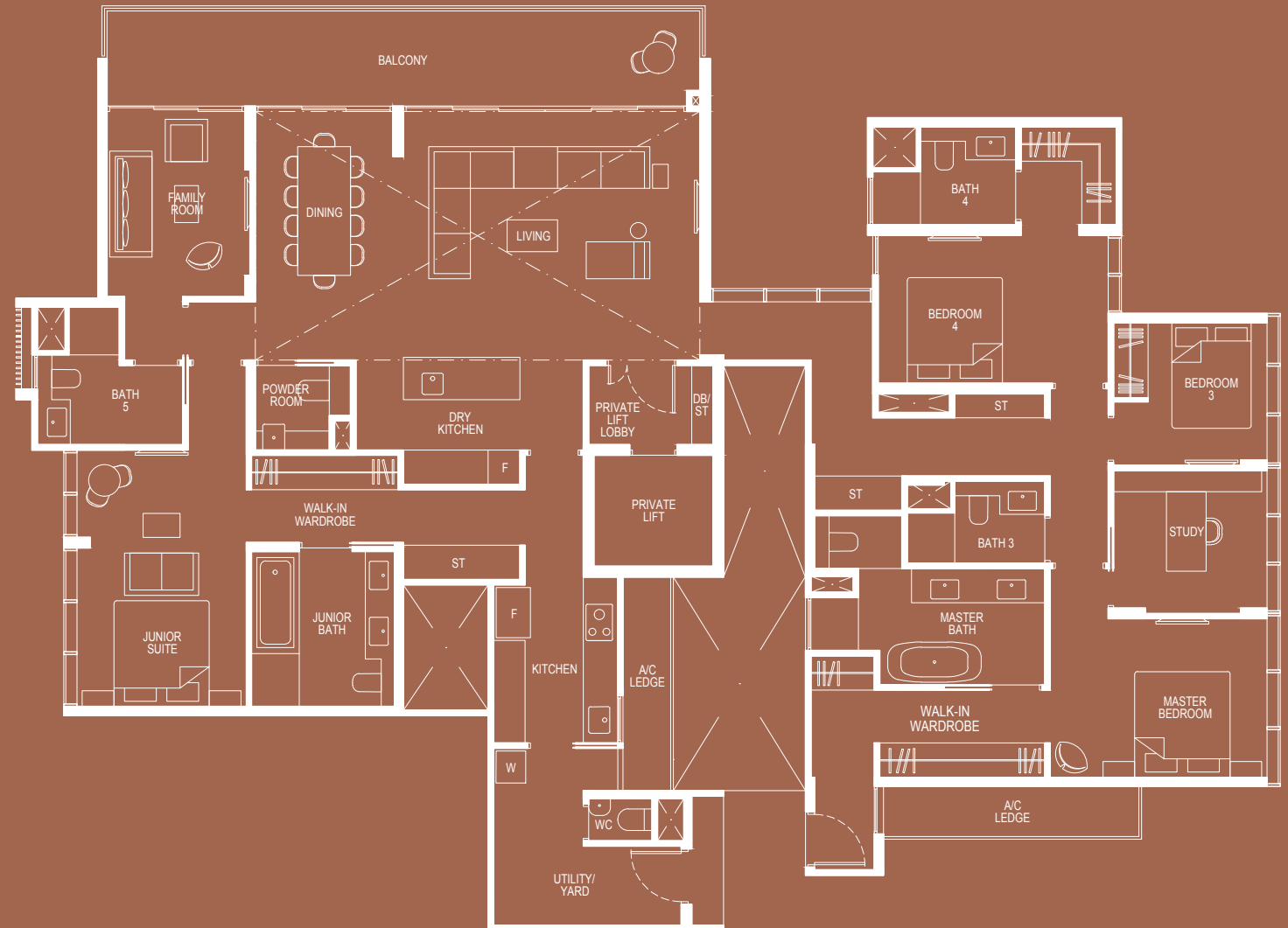
Plans are subject to change/amendments as may be required and/or approved by the Developer and/or the relevant authorities and do not form part of any offer or contract. These are not drawn to scale and are for the purpose of visual presentation only. The balcony shall not be enclosed unless with the approved balcony screen. For an illustration of the approved balcony screen, please refer to APPROVED BALCONY SCREEN DESIGN page of this brochure.

PREMIER PENTHOUSE

PH2

307 sqm (include 10 sqm A/C Ledge, 22 sqm Balcony,
41 sqm Void)

Unit(s): #23-10



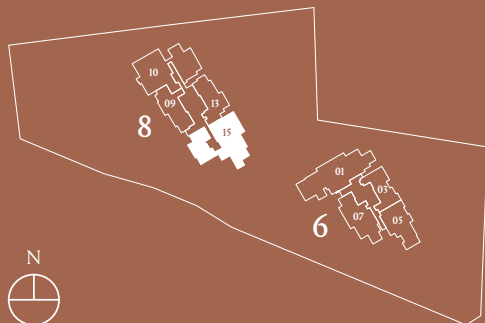
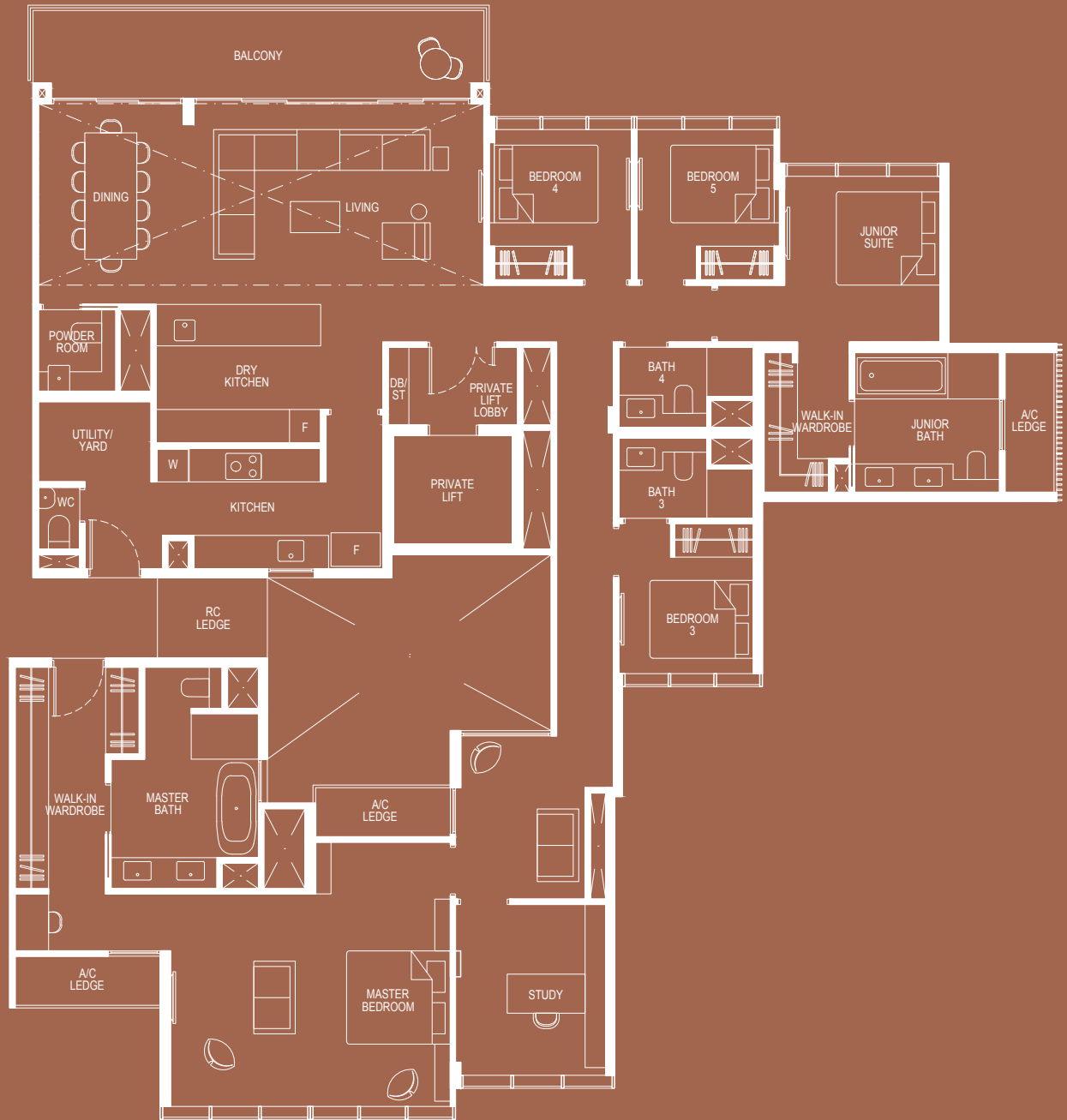
Plans are subject to change/amendments as may be required and/or approved by the Developer and/or the relevant authorities and do not form part of any offer or contract. These are not drawn to scale and are for the purpose of visual presentation only. The balcony shall not be enclosed unless with the approved balcony screen. For an illustration of the approved balcony screen, please refer to APPROVED BALCONY SCREEN DESIGN page of this brochure.

PREMIER PENTHOUSE

PH3

275 sqm (include 9 sqm A/C Ledge, 16 sqm Balcony, 30 sqm Void)

Unit(s): #23-15



Plans are subject to change/amendments as may be required and/or approved by the Developer and/or the relevant authorities and do not form part of any offer or contract. These are not drawn to scale and are for the purpose of visual presentation only. The balcony shall not be enclosed unless with the approved balcony screen. For an illustration of the approved balcony screen, please refer to APPROVED BALCONY SCREEN DESIGN page of this brochure.