

[1 - BEDROOM]

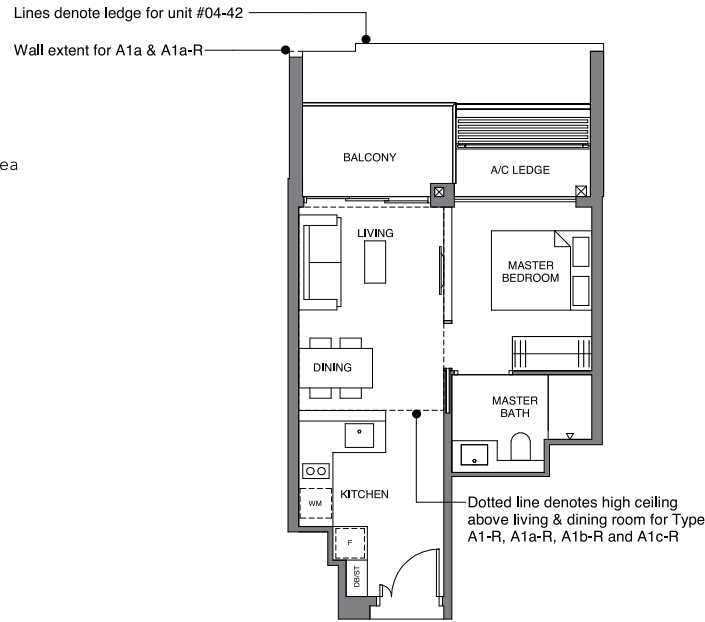
TYPE A1
44 sqm | 474 sq ft

BLOCK 32
#02-33 to #11-33

TYPE A1-R
56 sqm | 603 sq ft

Incl. of 12 sq m | 129 sq ft of void area
(high ceiling) above living & dining

BLOCK 32
#12-33



TYPE A1a
44 sqm | 474 sq ft

BLOCK 32
#02-25* to #11-25*

BLOCK 34
#04-42 to #11-42

TYPE A1a-R
56 sqm | 603 sq ft

Incl. of 12 sq m | 129 sq ft of void area
(high ceiling) above living & dining

BLOCK 32
#12-25*

BLOCK 34
#12-42

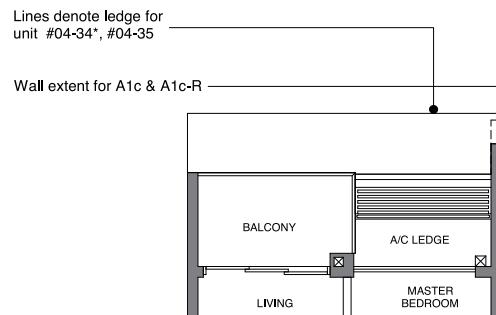
TYPE A1b
44 sqm | 474 sq ft

BLOCK 34
#04-35 to #11-35

TYPE A1b-R
56 sqm | 603 sq ft

Incl. of 12 sq m | 129 sq ft of void area
(high ceiling) above living & dining

BLOCK 34
#12-35



TYPE A1c
44 sqm | 474 sq ft

BLOCK 34
#04-34* to #11-34*

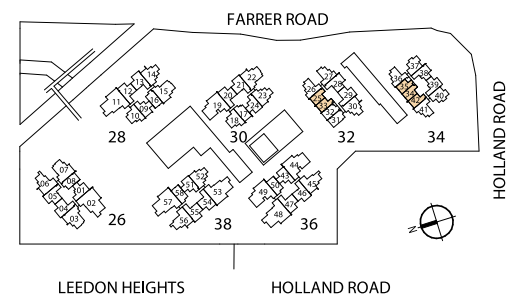
TYPE A1c-R
56 sqm | 603 sq ft

Incl. of 12 sq m / 129 sq ft of void area
(high ceiling) above living & dining

BLOCK 34
#12-34*

DB/ST: Distribution Board / Storage
F: Fridge
WM: Washer Cum Dryer
* Denotes mirror image

Area includes PES, A/C ledge, balcony and void area (high ceiling). The plans are subject to change as may be required or approved by the relevant authorities. Areas are approximate measurements only and are subject to final survey. Plans are not drawn to scale and do not form part of the contract.



[1 - BEDROOM + STUDY]



TYPE AS1
50 sqm | 538 sq ft

BLOCK 26
#02-08 to #12-08

BLOCK 28
#03-16 to #11-16

TYPE AS1-R
63 sqm | 678 sq ft

Incl. of 13 sq m | 140 sq ft of void area
(high ceiling) above living & dining

BLOCK 28
#12-16

TYPE AS1a
50 sqm | 538 sq ft

BLOCK 38
#01-58 to #12-58

TYPE AS1b
50 sqm | 538 sq ft

BLOCK 36
#01-50 to #12-50

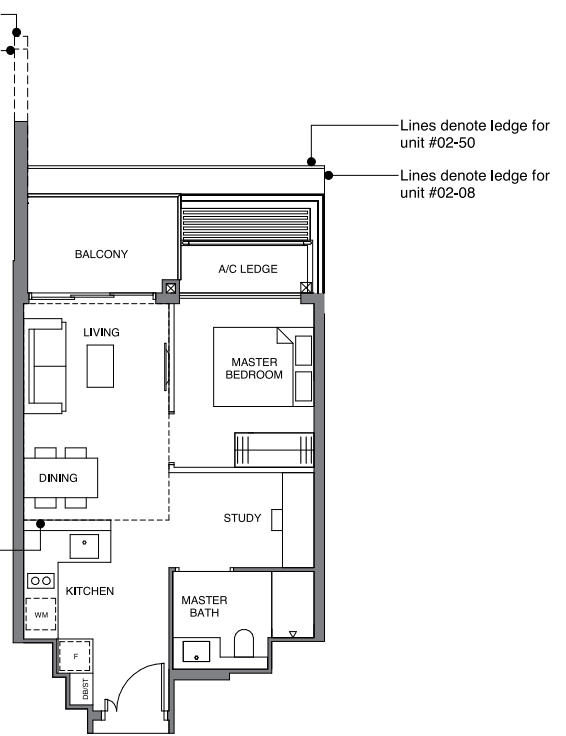
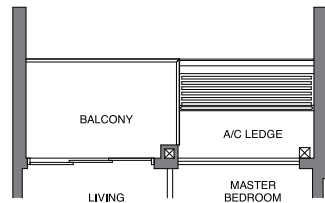
TYPE AS1c
50 sqm | 538 sq ft

BLOCK 30
#02-17* to #11-17*

TYPE AS1c-R
63 sqm | 678 sq ft

Incl. of 13 sq m | 140 sq ft of void area
(high ceiling) above living & dining

BLOCK 30
#12-17*



Dotted line denotes high ceiling above living & dining room for Type AS1-R, AS1c-R and AS1d-R

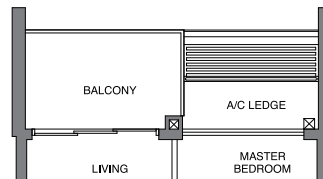
TYPE AS1d
50 sqm | 538 sq ft

BLOCK 32
#02-32 to #11-32

TYPE AS1d-R
63 sqm | 678 sq ft

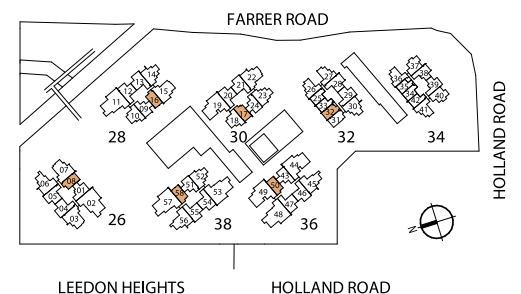
Incl. of 13 sq m | 140 sq ft of void area
(high ceiling) above living & dining

BLOCK 32
#12-32



DB/ST: Distribution Board / Storage
F: Fridge
WM: Washer Cum Dryer
* Denotes mirror image

Area includes PES, A/C ledge, balcony and void area (high ceiling). The plans are subject to change as may be required or approved by the relevant authorities. Areas are approximate measurements only and are subject to final survey. Plans are not drawn to scale and do not form part of the contract.



[1 - BEDROOM + STUDY]

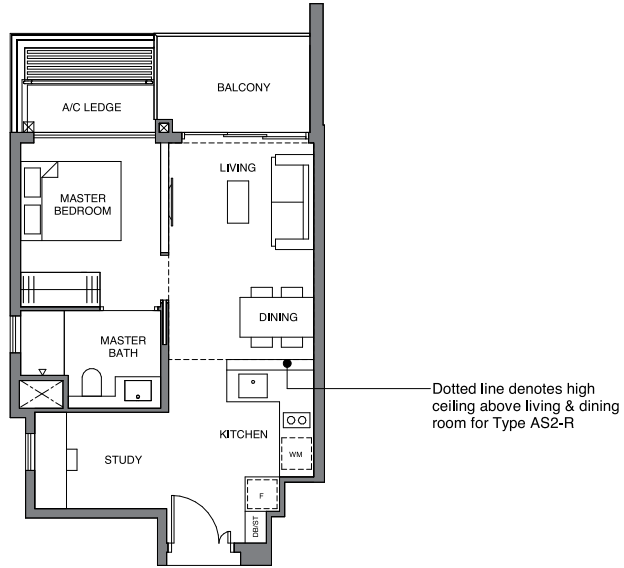
TYPE AS2
50 sqm | 538 sq ft

BLOCK 32
#02-31 to #11-31

TYPE AS2-R
63 sqm | 678 sq ft

Incl. of 13 sq m | 140 sq ft of void area (high ceiling) above living & dining

BLOCK 32
#12-31



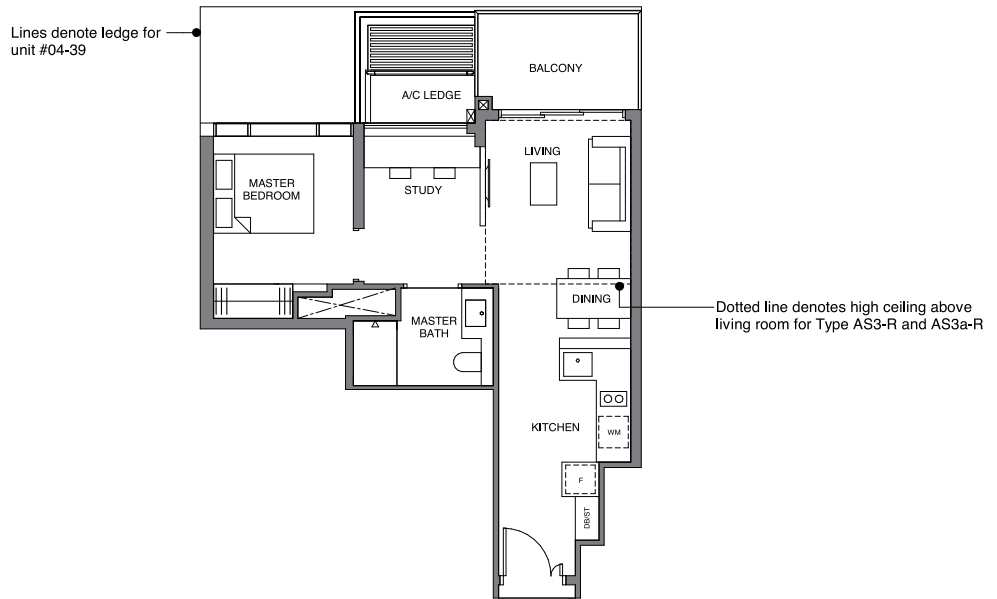
TYPE AS3
54 sqm | 581 sq ft

BLOCK 34
#04-39 to #11-39

TYPE AS3-R
64 sqm | 689 sq ft

Incl. of 10 sq m | 108 sq ft of void area (high ceiling) above living

BLOCK 34
#12-39



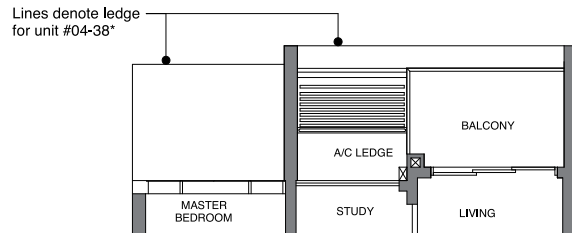
TYPE AS3a
54 sqm | 581 sq ft

BLOCK 34
#04-38* to #11-38*

TYPE AS3a-R
64 sqm | 689 sq ft

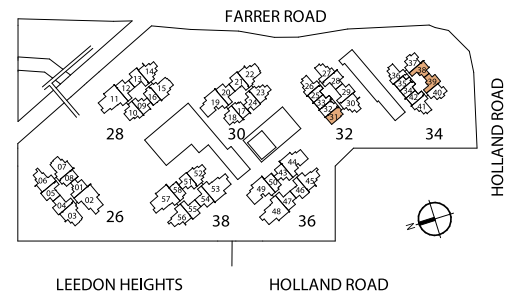
Incl. of 10 sq m | 108 sq ft of void area (high ceiling) above living

BLOCK 34
#12-38*



DB/ST: Distribution Board / Storage
F: Fridge
WM: Washer Cum Dryer
* Denotes mirror image

Area includes PES, A/C ledge, balcony and void area (high ceiling). The plans are subject to change as may be required or approved by the relevant authorities. Areas are approximate measurements only and are subject to final survey. Plans are not drawn to scale and do not form part of the contract.



[2 - BEDROOM]



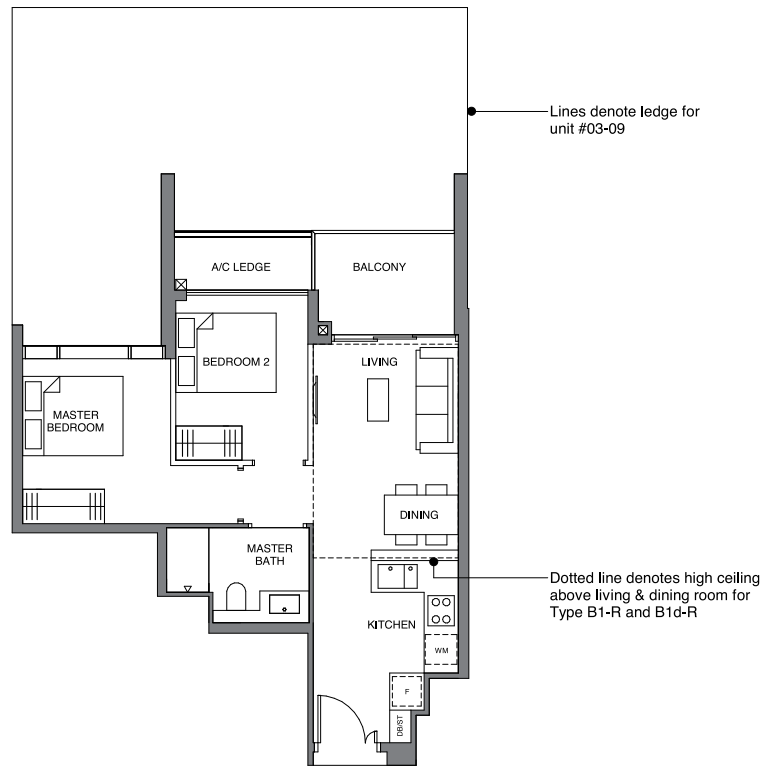
TYPE B1
57 sqm | 614 sq ft

BLOCK 28
#03-09 to #11-09

TYPE B1-R
70 sqm | 753 sq ft

Incl. of 13 sq m | 140 sq ft of void area (high ceiling) above living & dining

BLOCK 28
#12-09

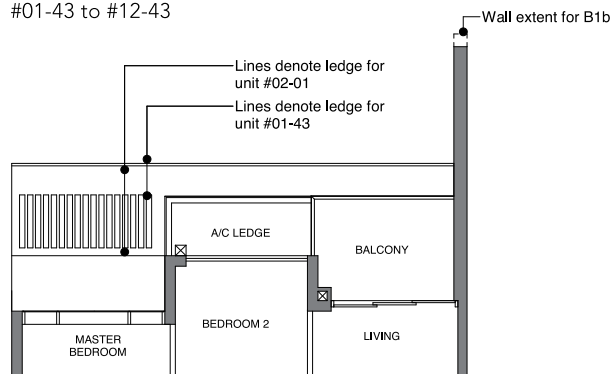


TYPE B1a
57 sqm | 614 sq ft

BLOCK 26
#02-01 to #12-01

TYPE B1b
57 sqm | 614 sq ft

BLOCK 36
#01-43 to #12-43



TYPE B1c
57 sqm | 614sq ft

BLOCK 38
#01-51 to #12-51

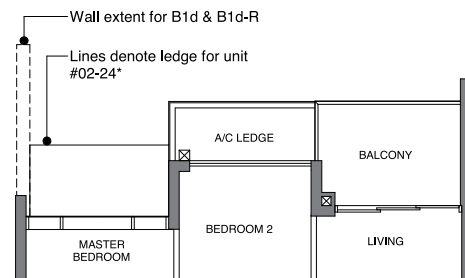
TYPE B1d
57 sqm | 614 sq ft

BLOCK 30
#02-24* to #11-24*

TYPE B1d-R
70 sqm | 753 sq ft

Incl. of 13 sq m | 140 sq ft of void area (high ceiling) above living & dining

BLOCK 30
#12-24*



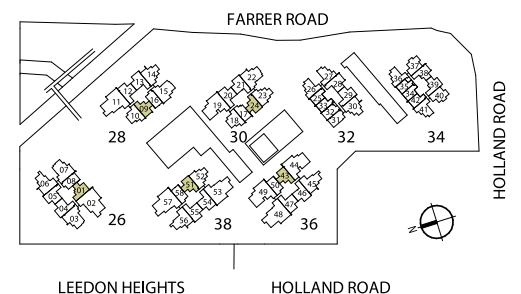
DB/ST: Distribution Board / Storage

F: Fridge

WM: Washer Cum Dryer

* Denotes mirror image

Area includes PES, A/C ledge, balcony and void area (high ceiling). The plans are subject to change as may be required or approved by the relevant authorities. Areas are approximate measurements only and are subject to final survey. Plans are not drawn to scale and do not form part of the contract.



[2 - BEDROOM]

TYPE B2
62 sqm | 667 sq ft

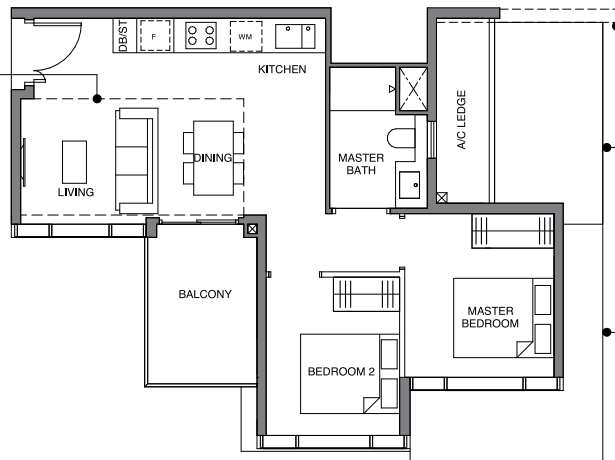
BLOCK 34
#04-40 to #11-40

Dotted line denotes high ceiling above living & dining room for Type B2-R and B2a-R

TYPE B2-R
73 sqm | 786 sq ft

Incl. of 11 sq m | 118 sq ft of void area (high ceiling) above living & dining

BLOCK 34
#12-40



TYPE B2a
62 sqm | 667 sq ft

BLOCK 34
#04-37* to #11-37*

TYPE B2a-R
73 sqm | 786 sq ft

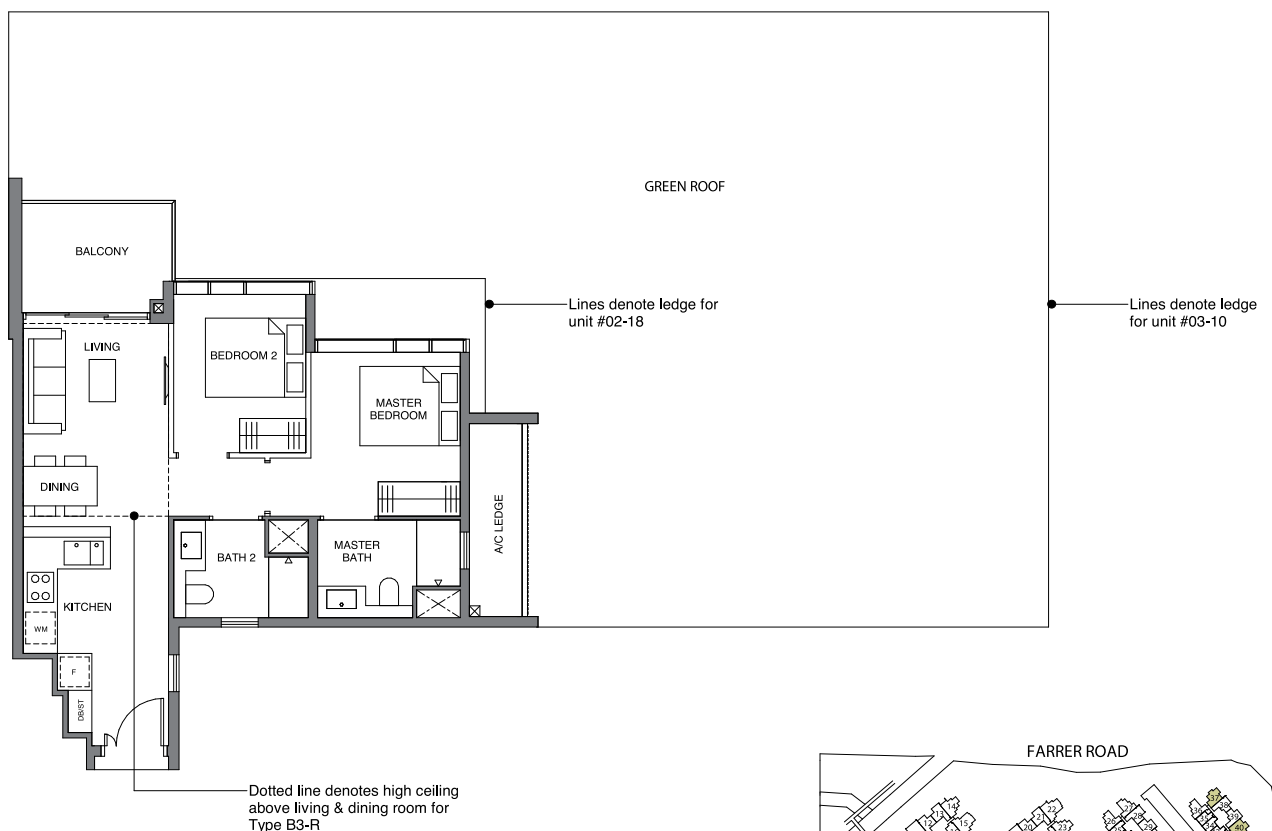
Incl. of 11 sq m | 118 sq ft of void area (high ceiling) above living & dining

BLOCK 34
#12-37*

TYPE B3
65 sqm | 700 sq ft

BLOCK 28
#03-10 to #11-10

BLOCK 30
#02-18 to #11-18



TYPE B3-R
76 sqm | 818 sq ft

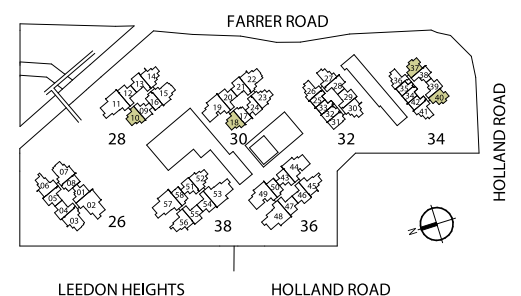
Incl. of 11 sq m | 118 sq ft of void area (high ceiling) above living and dining

BLOCK 28
#12-10

BLOCK 30
#12-18

DB/ST: Distribution Board / Storage
F: Fridge
WM: Washer Cum Dryer
* Denotes mirror image

Area includes PES, A/C ledge, balcony and void area (high ceiling). The plans are subject to change as may be required or approved by the relevant authorities. Areas are approximate measurements only and are subject to final survey. Plans are not drawn to scale and do not form part of the contract.



[2 - BEDROOM]



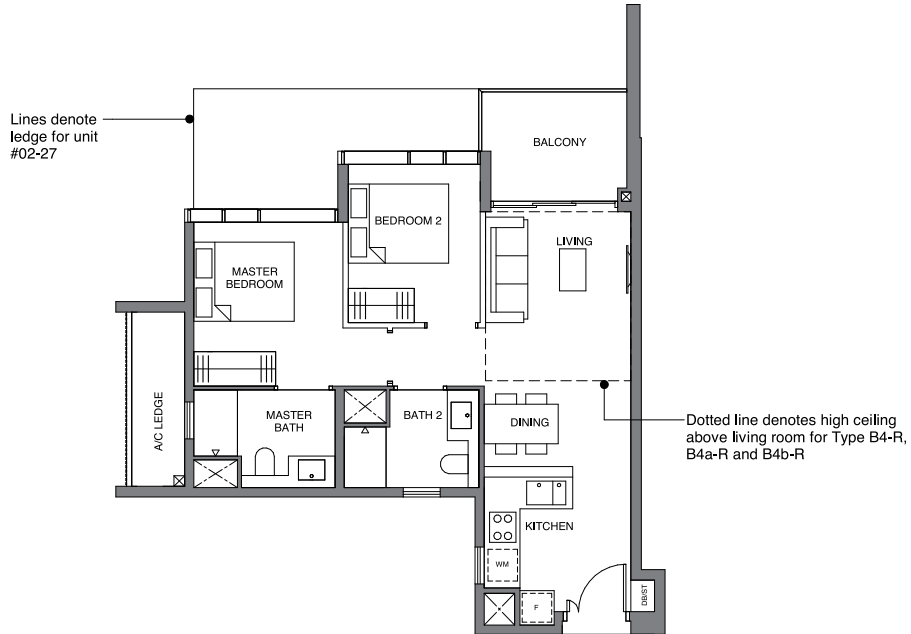
TYPE B4
65 sqm | 700 sq ft

BLOCK 32
#02-27 to #11-27

TYPE B4-R
75 sqm | 807 sq ft

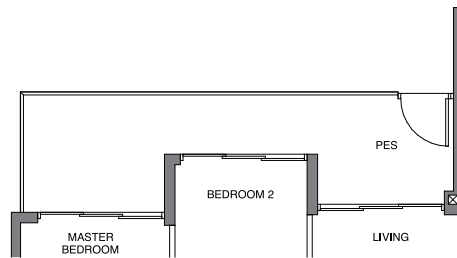
Incl. of 10 sq m | 108 sq ft of void area
(high ceiling) above living

BLOCK 32
#12-27



TYPE B4-P
74 sqm | 797 sq ft

BLOCK 32
#01-27



TYPE B4a
65 sqm | 700 sq ft

BLOCK 32
#02-26* to #11-26*

BLOCK 34
#04-41 to #11-41

TYPE B4a-R
75 sqm | 807 sq ft

Incl. of 10 sq m | 108 sq ft of void area
(high ceiling) above living

BLOCK 32
#12-26*

BLOCK 34
#12-41

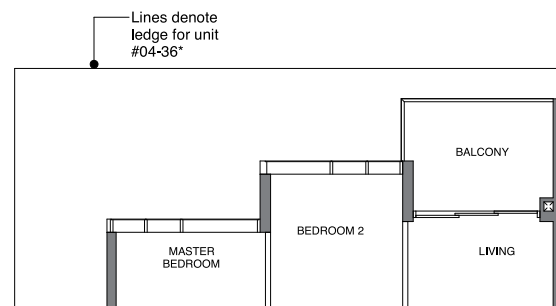
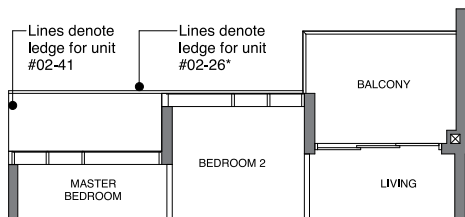
TYPE B4b
65 sqm | 700 sq ft

BLOCK 34
#04-36* to #11-36*

TYPE B4b-R
75 sqm | 807 sq ft

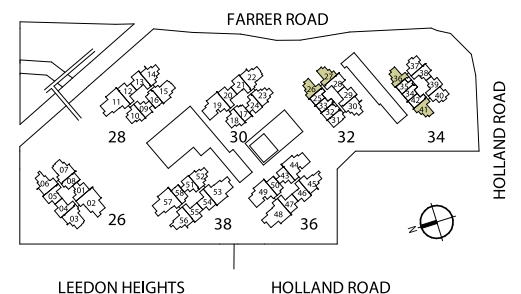
Incl. of 10 sq m | 108 sq ft of void area
(high ceiling) above living

BLOCK 34
#12-36*



DB/ST: Distribution Board / Storage
F: Fridge
WM: Washer Cum Dryer
* Denotes mirror image

Area includes PES, A/C ledge, balcony and void area (high ceiling). The plans are subject to change as may be required or approved by the relevant authorities. Areas are approximate measurements only and are subject to final survey. Plans are not drawn to scale and do not form part of the contract.



[2 - BEDROOM]

TYPE B5
66 sqm | 710 sq ft

BLOCK 26
#03-04* to #12-04*
#03-05 to #12-05

BLOCK 28
#02-13 to #11-13

BLOCK 30
#02-21 to #11-21

BLOCK 32
#02-29 to #11-29

BLOCK 36
#02-47 to #12-47

BLOCK 38
#02-55 to #12-55

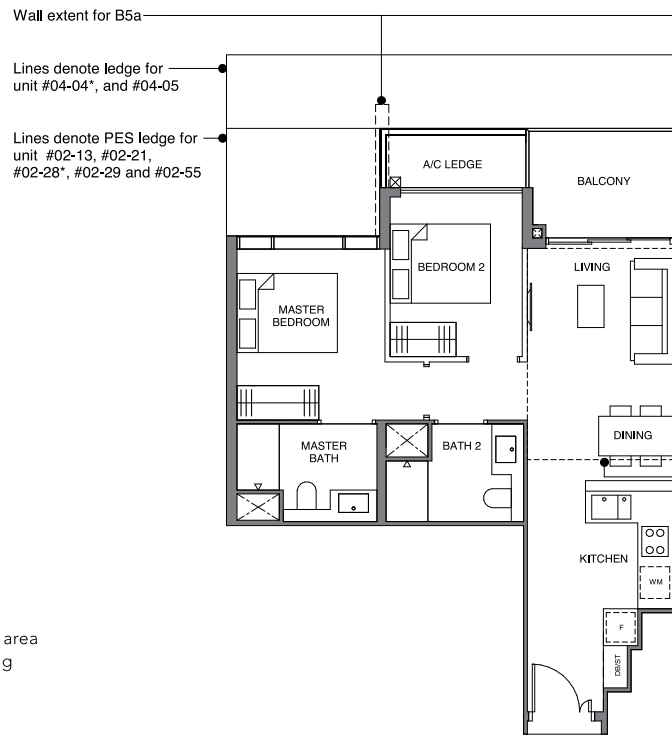
TYPE B5-R
78 sqm | 840 sq ft

Incl. of 12 sq m | 129 sq ft of void area
(high ceiling) above living & dining

BLOCK 28
#12-13

BLOCK 30
#12-21

BLOCK 32
#12-29



TYPE B5a
66 sqm | 710 sq ft

BLOCK 32
#02-28* to #11-28*

TYPE B5a-R
78 sqm | 840 sq ft

Incl. of 12 sq m | 129 sq ft of void area
(high ceiling) above living & dining

BLOCK 32
#12-28*

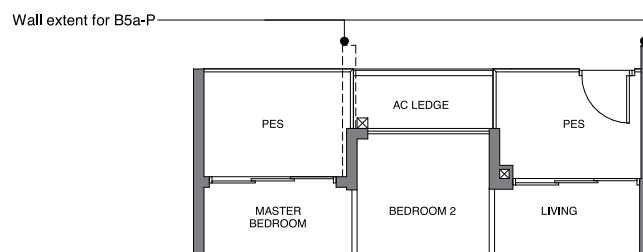
Dotted line denotes high ceiling
above living & dining room for
Type B5-R and B5a-R

TYPE B5-P
72 sqm | 775 sq ft

BLOCK 30
#01-21

BLOCK 32
#01-29

BLOCK 38
#01-55

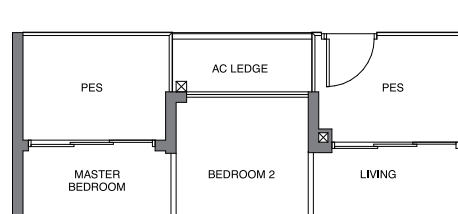


TYPE B5a-P
72 sqm | 775 sq ft

BLOCK 32
#01-28*

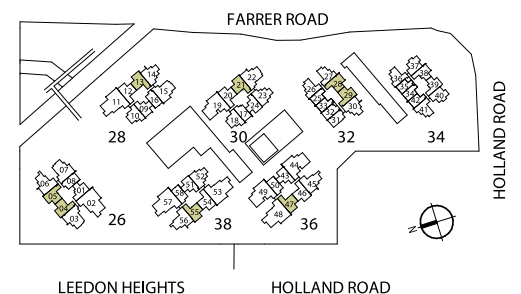
TYPE B5-P
72 sqm | 775 sq ft

BLOCK 28
#01-13



DB/ST: Distribution Board / Storage
F: Fridge
WM: Washer Cum Dryer
* Denotes mirror image

Area includes PES, A/C ledge, balcony and void area (high ceiling). The plans are subject to change as may be required or approved by the relevant authorities. Areas are approximate measurements only and are subject to final survey. Plans are not drawn to scale and do not form part of the contract.



[2 - BEDROOM]



TYPE B5b
66 sqm | 710 sq ft

BLOCK 28
#02-12 to #11-12

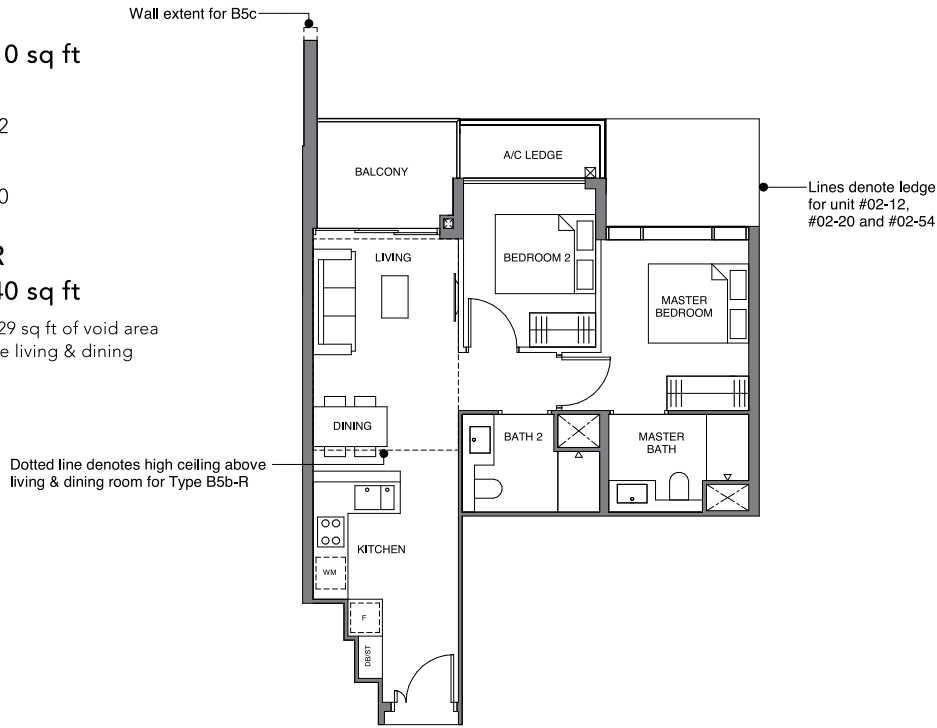
BLOCK 30
#02-20 to #11-20

TYPE B5b-R
78 sqm | 840 sq ft

Incl. of 12 sq m | 129 sq ft of void area
(high ceiling) above living & dining

BLOCK 28
#12-12

BLOCK 30
#12-20



TYPE B5c
66 sqm | 710 sq ft

BLOCK 36
#02-46 to #12-46

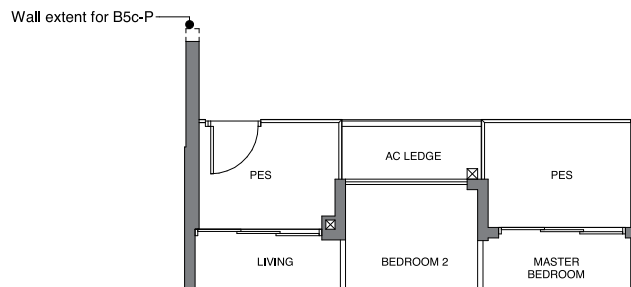
BLOCK 38
#02-54 to #12-54

TYPE B5b-P
72 sqm | 775 sq ft

BLOCK 30
#01-20

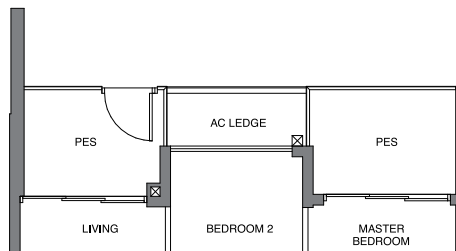
TYPE B5c-P
72 sqm | 775 sq ft

BLOCK 38
#01-54



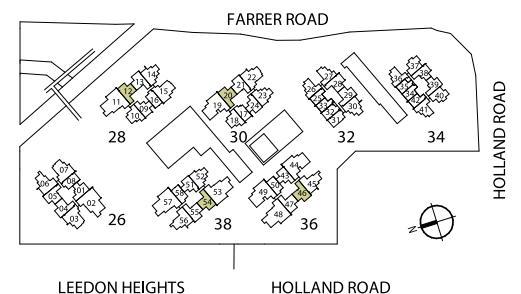
TYPE B5b-P
72 sqm | 775 sq ft

BLOCK 28
#01-12



DB/ST: Distribution Board / Storage
F: Fridge
WM: Washer Cum Dryer
* Denotes mirror image

Area includes PES, A/C ledge, balcony and void area (high ceiling). The plans are subject to change as may be required or approved by the relevant authorities. Areas are approximate measurements only and are subject to final survey. Plans are not drawn to scale and do not form part of the contract.



[2 - BEDROOM + STUDY]

TYPE BS1
76 sqm | 818 sq ft

BLOCK 30
#02-23* to #11-23*

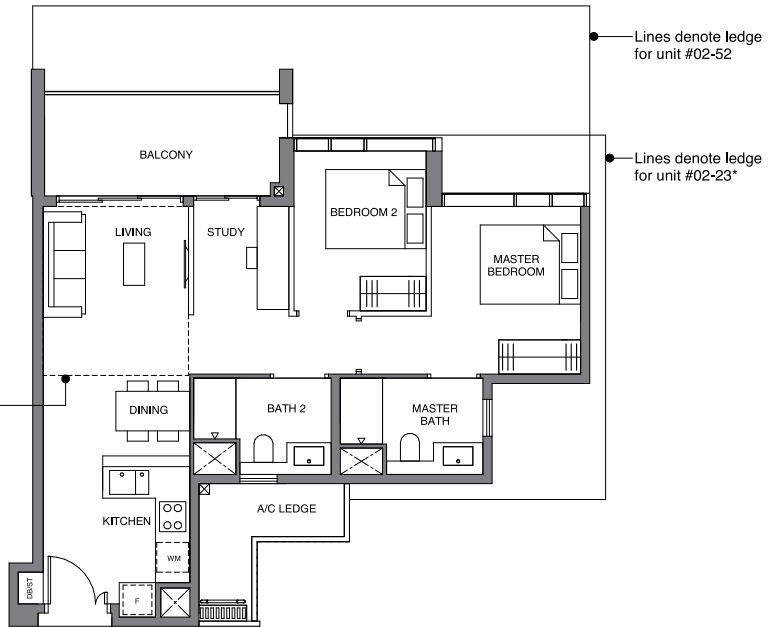
BLOCK 38
#02-52 to #12-52

TYPE BS1-R
86 sqm | 926 sq ft

Incl. of 10 sq m | 108 sq ft of void area
(high ceiling) above living

BLOCK 30
#12-23*

Dotted line denotes high ceiling above living room for Type BS1-R and BS1a-R



TYPE BS1a
76 sqm | 818 sq ft

BLOCK 28
#02-14 to #11-14

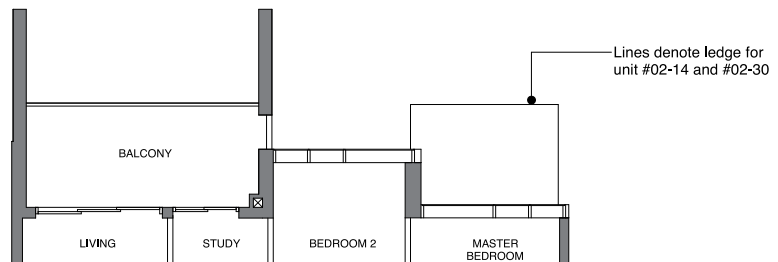
BLOCK 32
#02-30 to #11-30

TYPE BS1a-R
86 sqm | 926 sq ft

Incl. of 10 sq m | 108 sq ft of void area
(high ceiling) above living

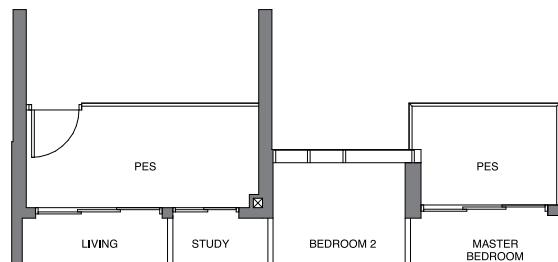
BLOCK 28 #12-14

BLOCK 32 #12-30



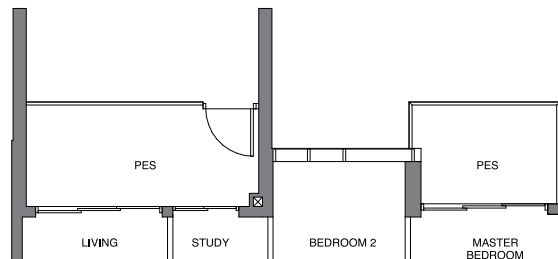
TYPE BS1a-P
81 sqm | 872 sq ft

BLOCK 28
#01-14



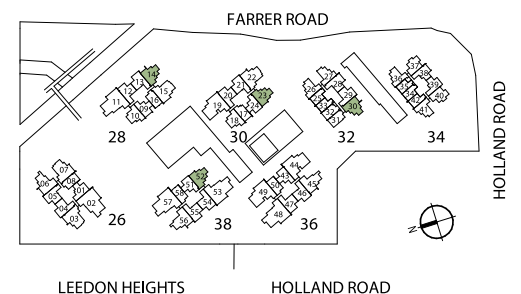
TYPE BS1a-P
81 sqm | 872 sq ft

BLOCK 32
#01-30



DB/ST: Distribution Board / Storage
F: Fridge
WM: Washer Cum Dryer
* Denotes mirror image

Area includes PES, A/C ledge, balcony and void area (high ceiling). The plans are subject to change as may be required or approved by the relevant authorities. Areas are approximate measurements only and are subject to final survey. Plans are not drawn to scale and do not form part of the contract.



[3 - BEDROOM]

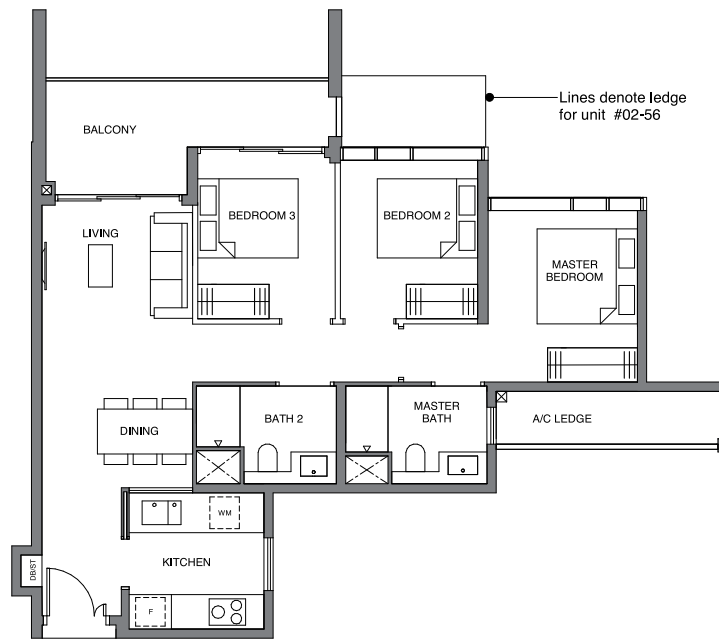


TYPE C1
89 sqm | 958 sq ft

BLOCK 26
#03-06 to #12-06

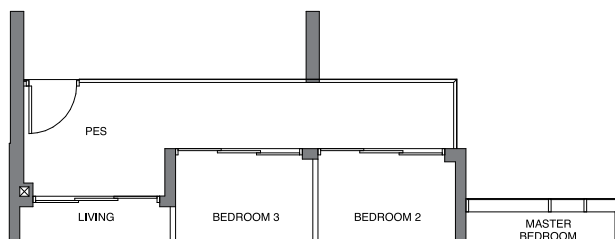
BLOCK 36
#02-45* to #12-45*

BLOCK 38
#02-56 to #12-56



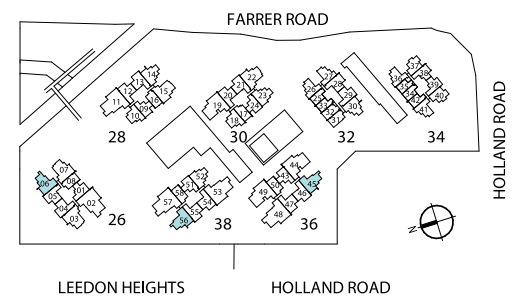
TYPE C1-P
92 sqm | 990 sq ft

BLOCK 38
#01-56



DB/ST: Distribution Board / Storage
F: Fridge
WM: Washer Cum Dryer
* Denotes mirror image

Area includes PES, A/C ledge, balcony and void area (high ceiling). The plans are subject to change as may be required or approved by the relevant authorities. Areas are approximate measurements only and are subject to final survey. Plans are not drawn to scale and do not form part of the contract.



[3 - BEDROOM PREMIUM]

TYPE C2
97 sqm | 1044 sq ft

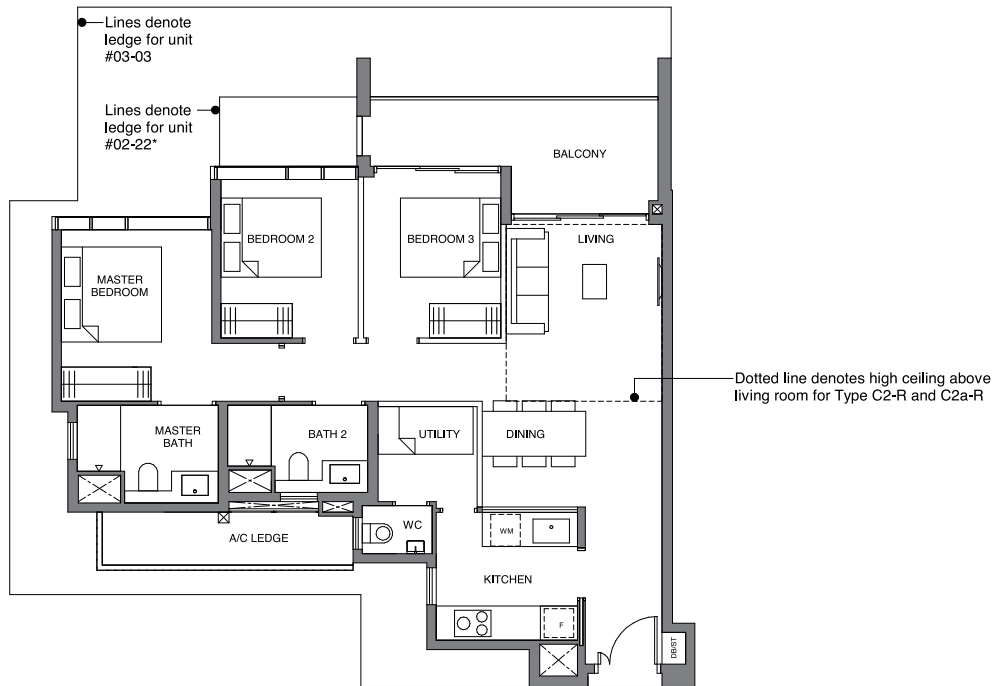
BLOCK 26
#03-03 to #12-03

BLOCK 30
#02-22* to #11-22*

TYPE C2-R
108 sqm | 1163 sq ft

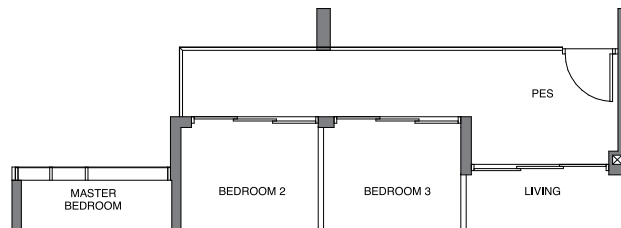
Incl. of 11 sq m | 118 sq ft of void area (high ceiling) above living

BLOCK 30
#12-22*



TYPE C2-P
100 sqm | 1076 sq ft

BLOCK 30
#01-22*



TYPE C2a
97 sqm | 1044 sq ft

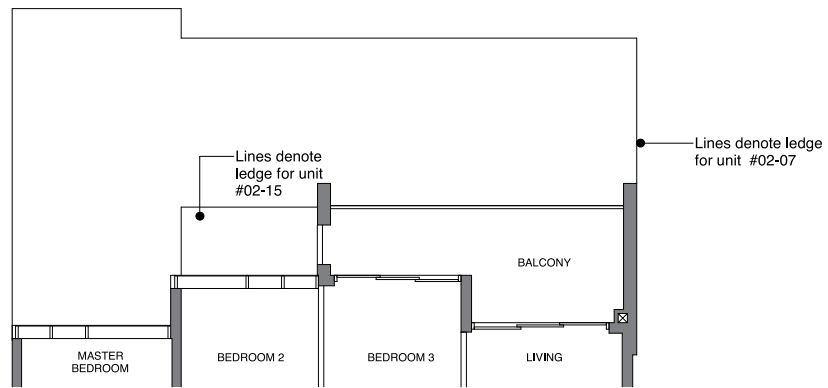
BLOCK 26
#02-07 to #12-07

BLOCK 28
#02-15 to #11-15

TYPE C2a-R
108 sqm | 1163 sq ft

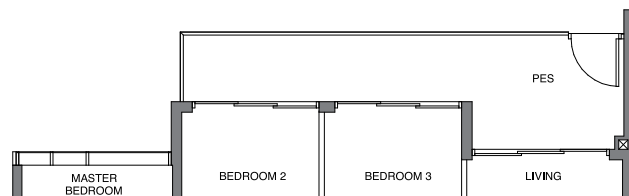
Incl. of 11 sq m | 118 sq ft of void area (high ceiling) above living

BLOCK 28
#12-15



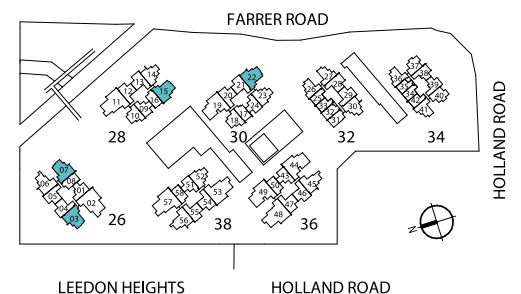
TYPE C2a-P
100 sqm | 1076 sq ft

BLOCK 28
#01-15



DB/ST: Distribution Board / Storage
F: Fridge
WM: Washer Cum Dryer
* Denotes mirror image

Area includes PES, A/C ledge, balcony and void area (high ceiling). The plans are subject to change as may be required or approved by the relevant authorities. Areas are approximate measurements only and are subject to final survey. Plans are not drawn to scale and do not form part of the contract.



[3 - BEDROOM EXCLUSIVE]



TYPE C3
126 sqm | 1356 sq ft

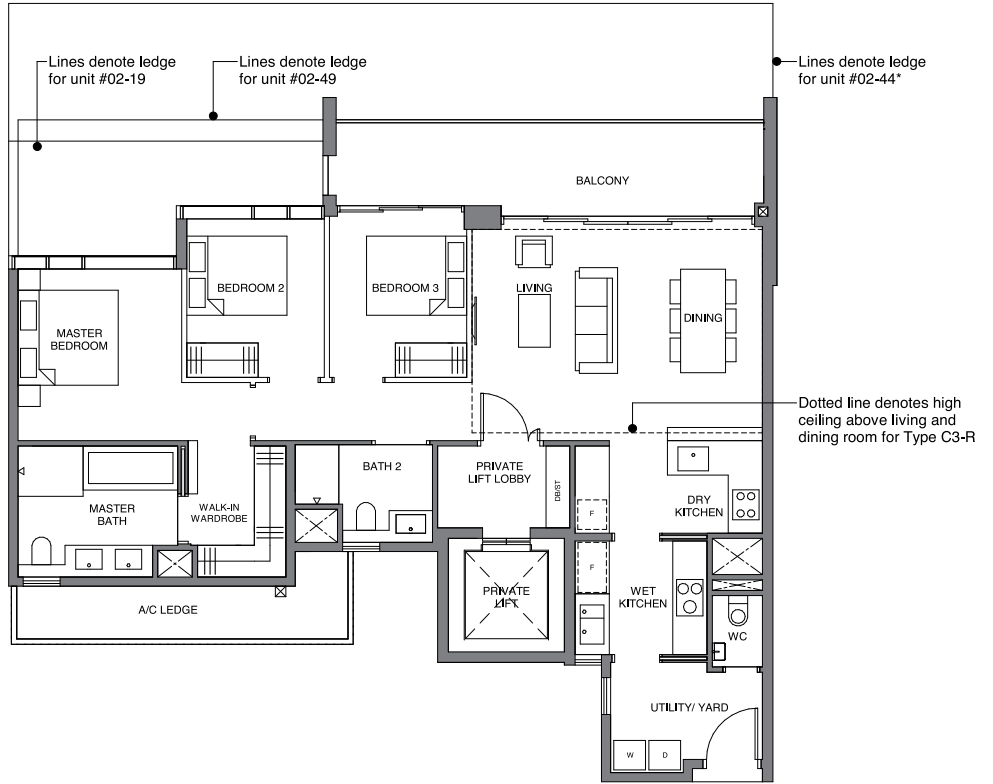
BLOCK 30
#02-19 to #11-19

BLOCK 36
#02-44* to #12-44*
#02-49 to #12-49

TYPE C3-R
149 sqm | 1604 sq ft

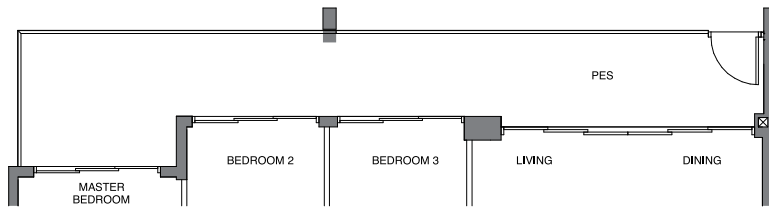
Incl. of 23 sqm | 248 sq ft of void area
(high ceiling) above living & dining

BLOCK 30
#12-19



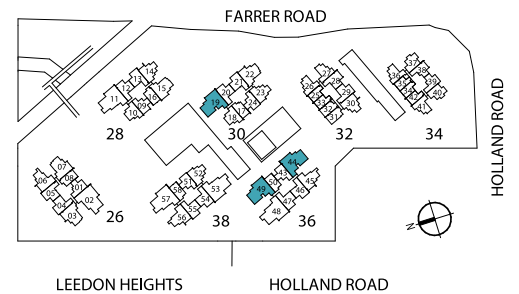
TYPE C3-P
138 sqm | 1485 sq ft

BLOCK 30
#01-19



D: Dryer
DB/ST: Distribution Board / Storage
F: Fridge
W: Washer
* Denotes mirror image

Area includes PES, A/C ledge, balcony and void area (high ceiling). The plans are subject to change as may be required or approved by the relevant authorities. Areas are approximate measurements only and are subject to final survey. Plans are not drawn to scale and do not form part of the contract.





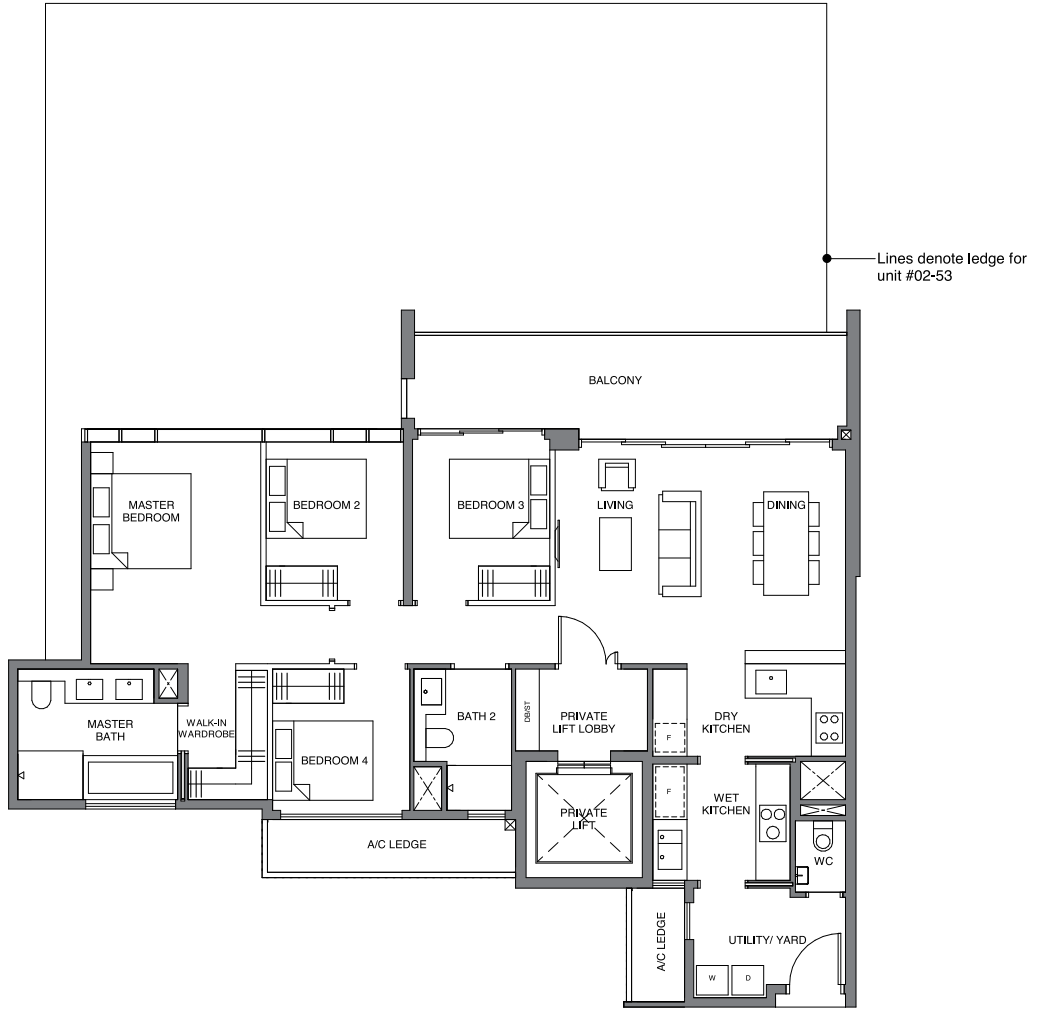
[4 - BEDROOM EXCLUSIVE]

TYPE D1
 139 sqm | 1496 sq ft

BLOCK 26
 #02-02* to #12-02*

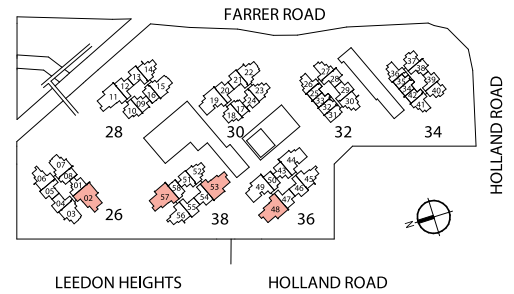
BLOCK 36
 #02-48* to #12-48*

BLOCK 38
 #02-53 to #12-53
 #02-57 to #12-57



D: Dryer
 DB/ST: Distribution Board / Storage
 F: Fridge
 W: Washer
 * Denotes mirror image

Area includes PES, A/C ledge, balcony and void area (high ceiling). The plans are subject to change as may be required or approved by the relevant authorities. Areas are approximate measurements only and are subject to final survey. Plans are not drawn to scale and do not form part of the contract.



[4 - BEDROOM EXCLUSIVE]



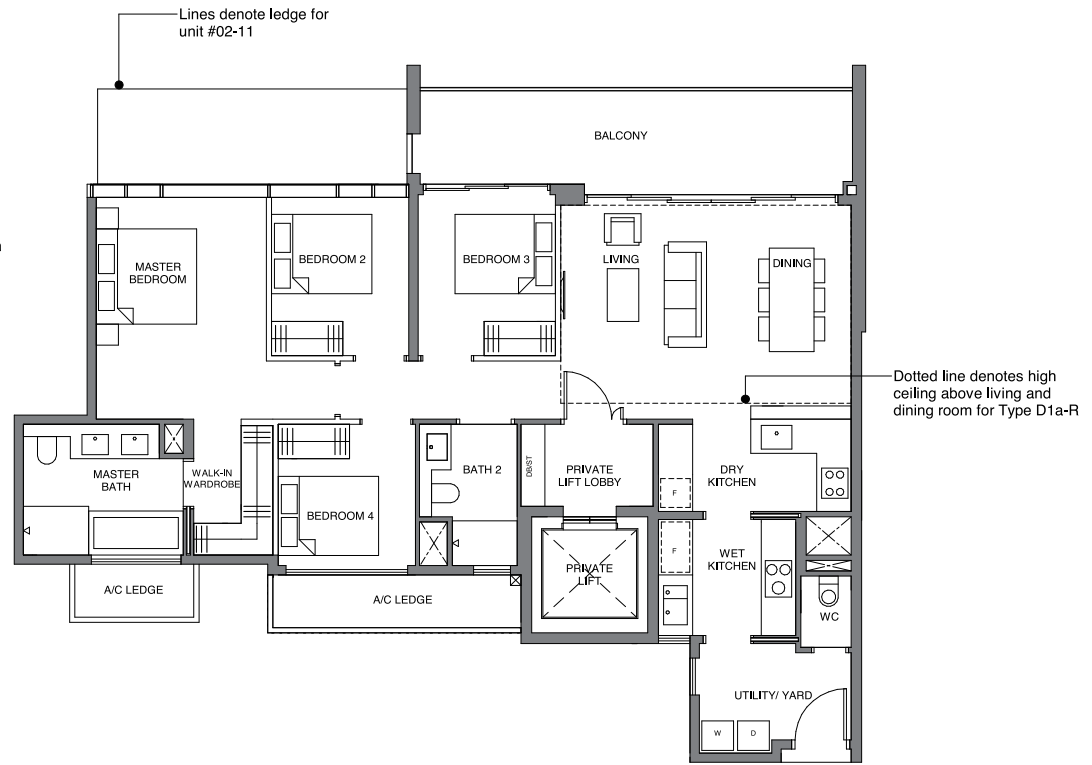
TYPE D1a
139 sqm | 1496 sq ft

BLOCK 28
#02-11 to #11-11

TYPE D1a-R
162 sqm | 1744 sq ft

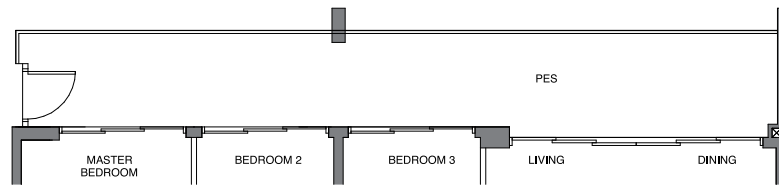
Incl. of 23 sq m | 248 sq ft of void area
(high ceiling) above living & dining

BLOCK 28
#12-11



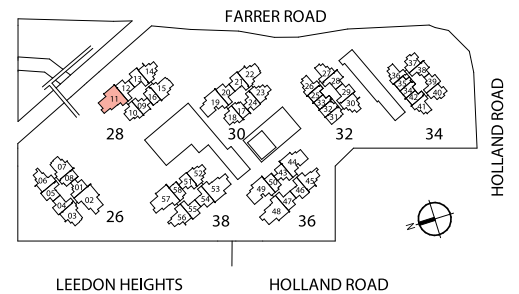
TYPE D1a-P
150 sqm | 1615 sq ft

BLOCK 28
#01-11



D: Dryer
DB/ST: Distribution Board / Storage
F: Fridge
W: Washer
* Denotes mirror image

Area includes PES, A/C ledge, balcony and void area (high ceiling). The plans are subject to change as may be required or approved by the relevant authorities. Areas are approximate measurements only and are subject to final survey. Plans are not drawn to scale and do not form part of the contract.



[GARDEN VILLA]

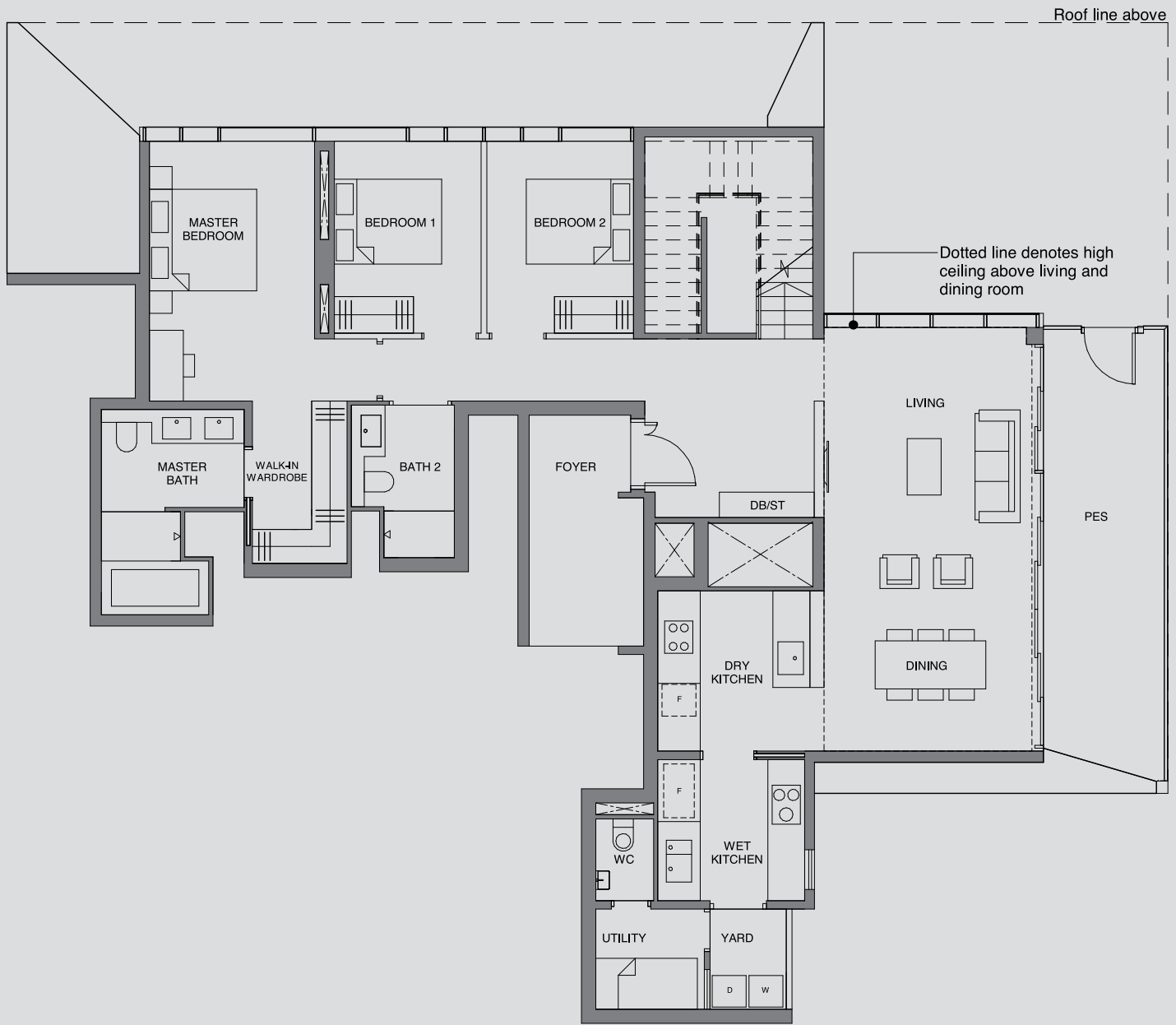
TYPE E1

241 sqm | 2594 sq ft

Incl. of 41 sq m | 441 sq ft of void area

BLOCK 36

#01-44

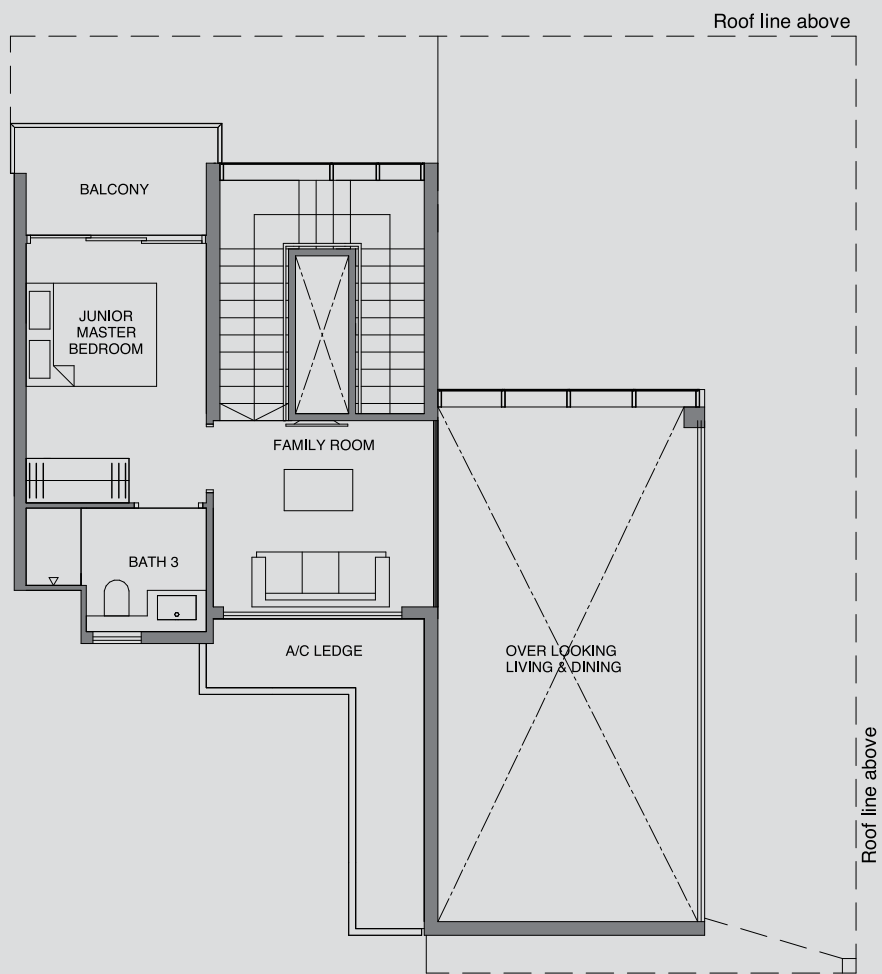


LOWER LEVEL

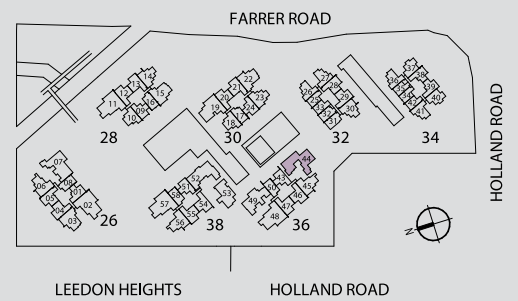
D: Dryer
 DB/ST: Distribution Board / Storage
 F: Fridge
 W: Washer
 * Denotes mirror image

Area includes PES, A/C ledge, balcony and void area (high ceiling). The plans are subject to change as may be required or approved by the relevant authorities. Areas are approximate measurements only and are subject to final survey. Plans are not drawn to scale and do not form part of the contract.

[GARDEN VILLA]



UPPER LEVEL



[GARDEN VILLA]

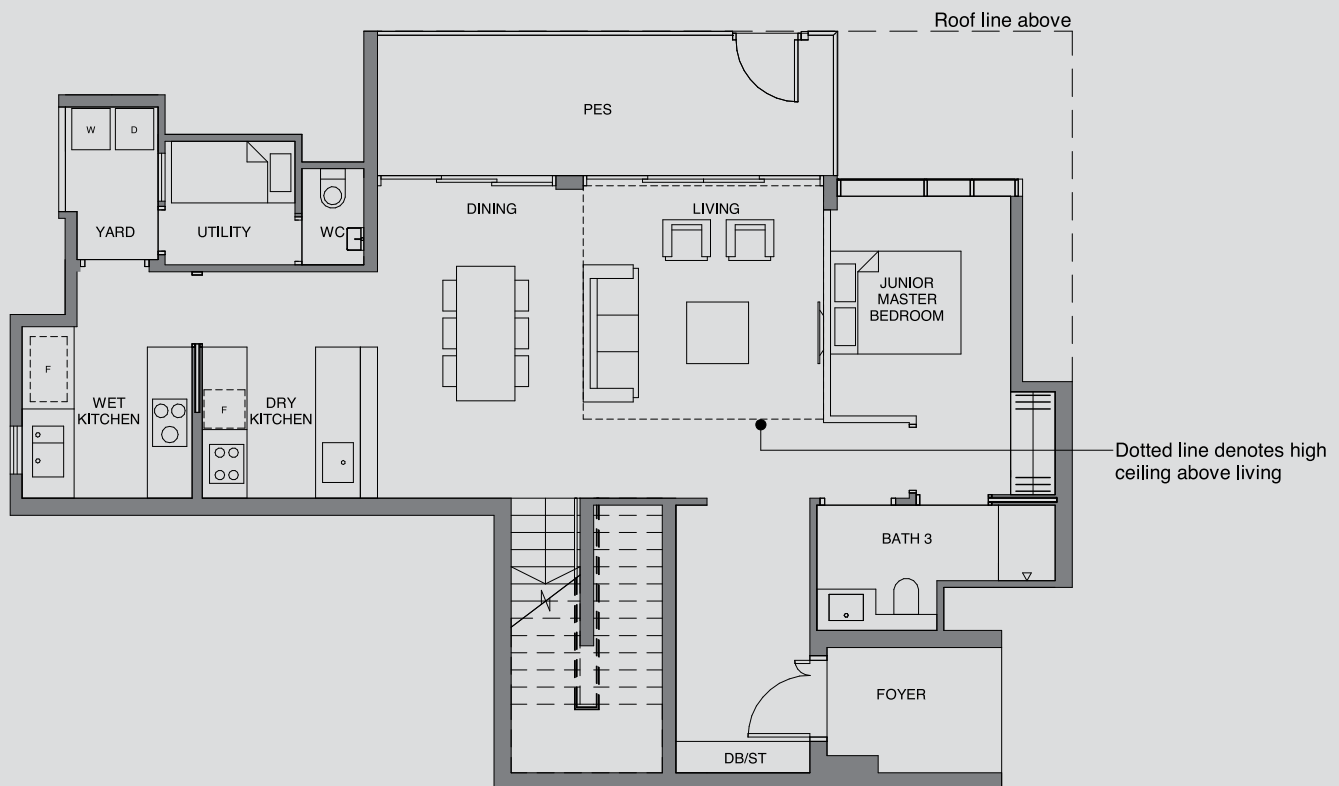
TYPE E2

226 sqm | 2433 sq ft

Incl. of 23 sq m | 248 sq ft of void area

BLOCK 38

#01-53

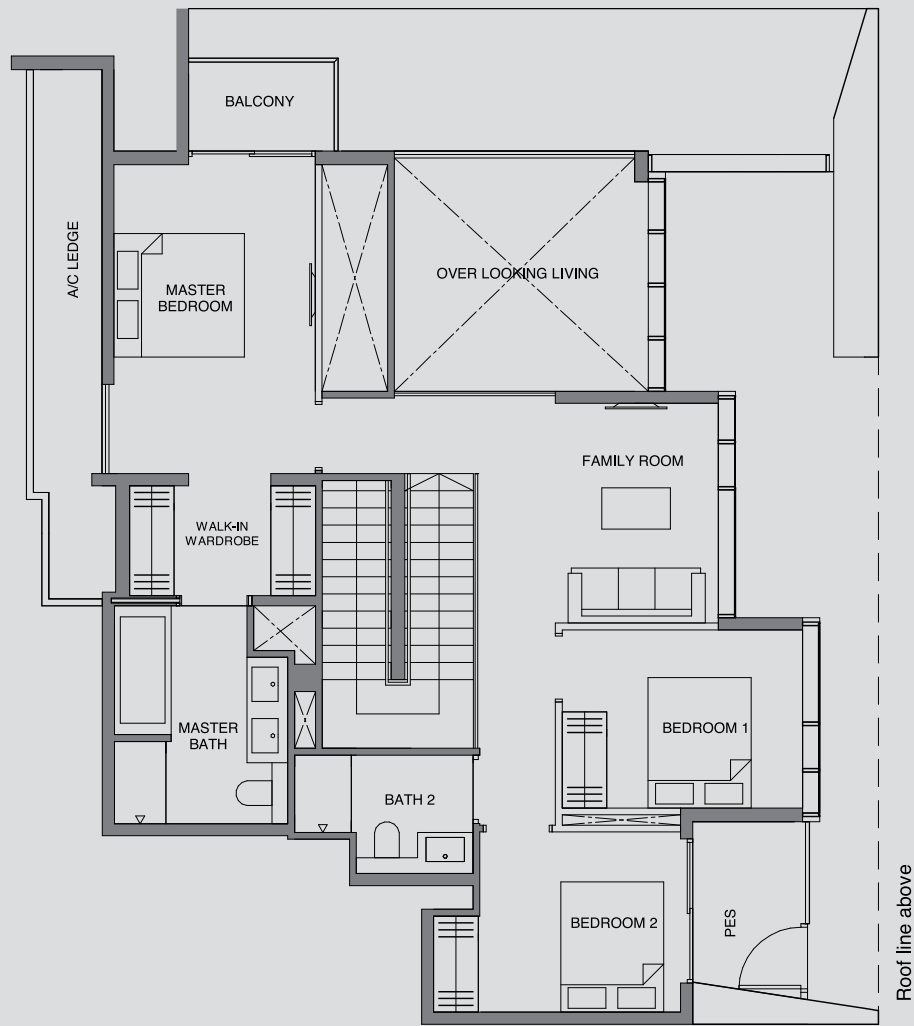


LOWER LEVEL

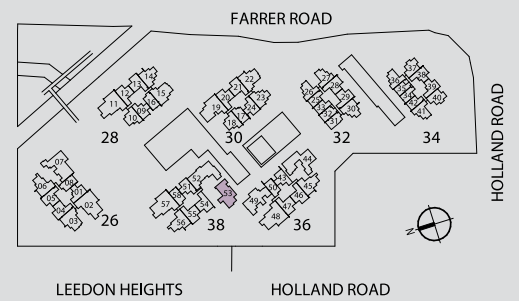
D: Dryer
DB/ST: Distribution Board / Storage
F: Fridge
W: Washer
* Denotes mirror image

Area includes PES, A/C ledge, balcony and void area (high ceiling). The plans are subject to change as may be required or approved by the relevant authorities. Areas are approximate measurements only and are subject to final survey. Plans are not drawn to scale and do not form part of the contract.

[GARDEN VILLA]



UPPER LEVEL



[GARDEN VILLA]

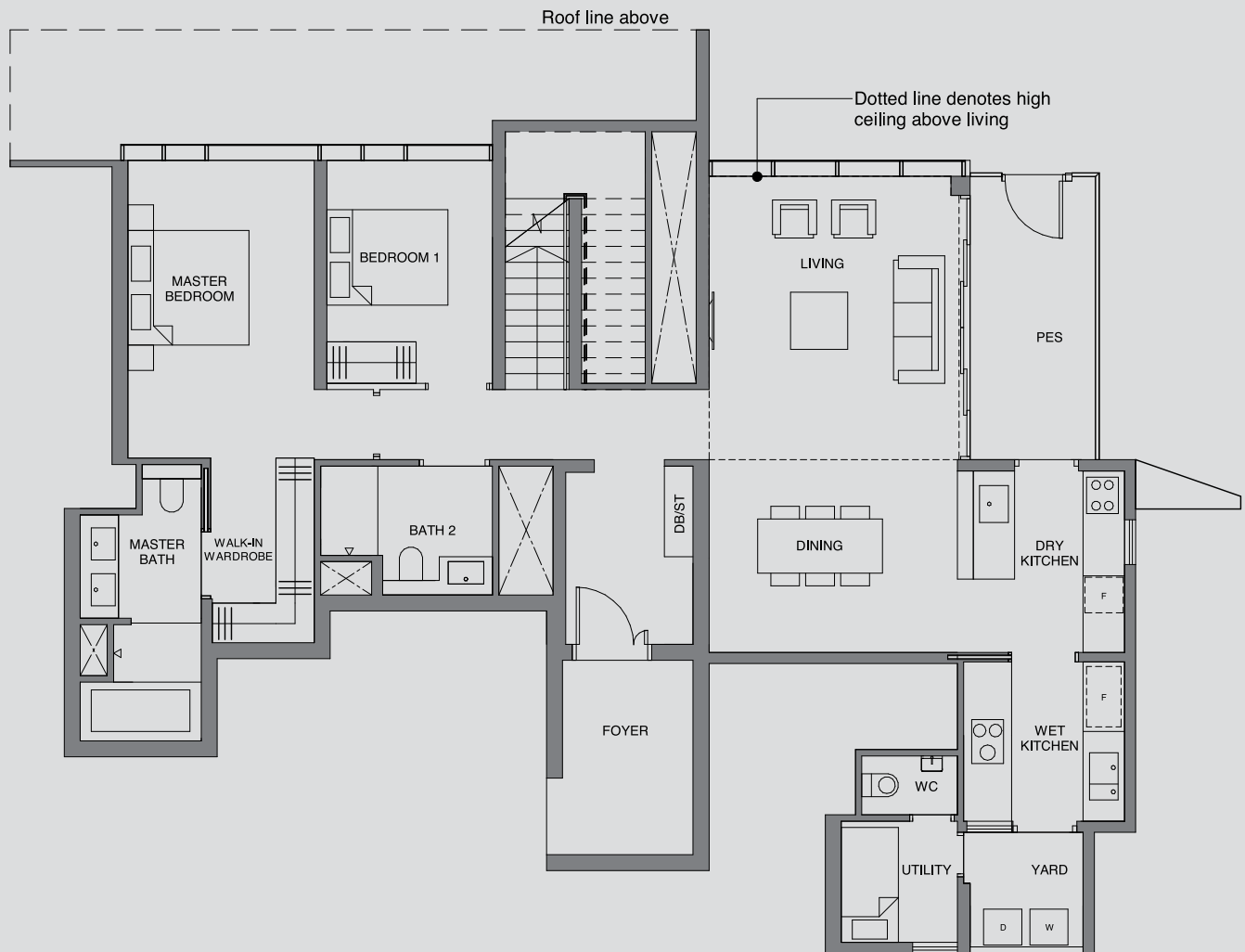
TYPE E3

224 sqm | 2411 sq ft

Incl. of 30 sq m | 323 sq ft of void area

BLOCK 38

#01-52

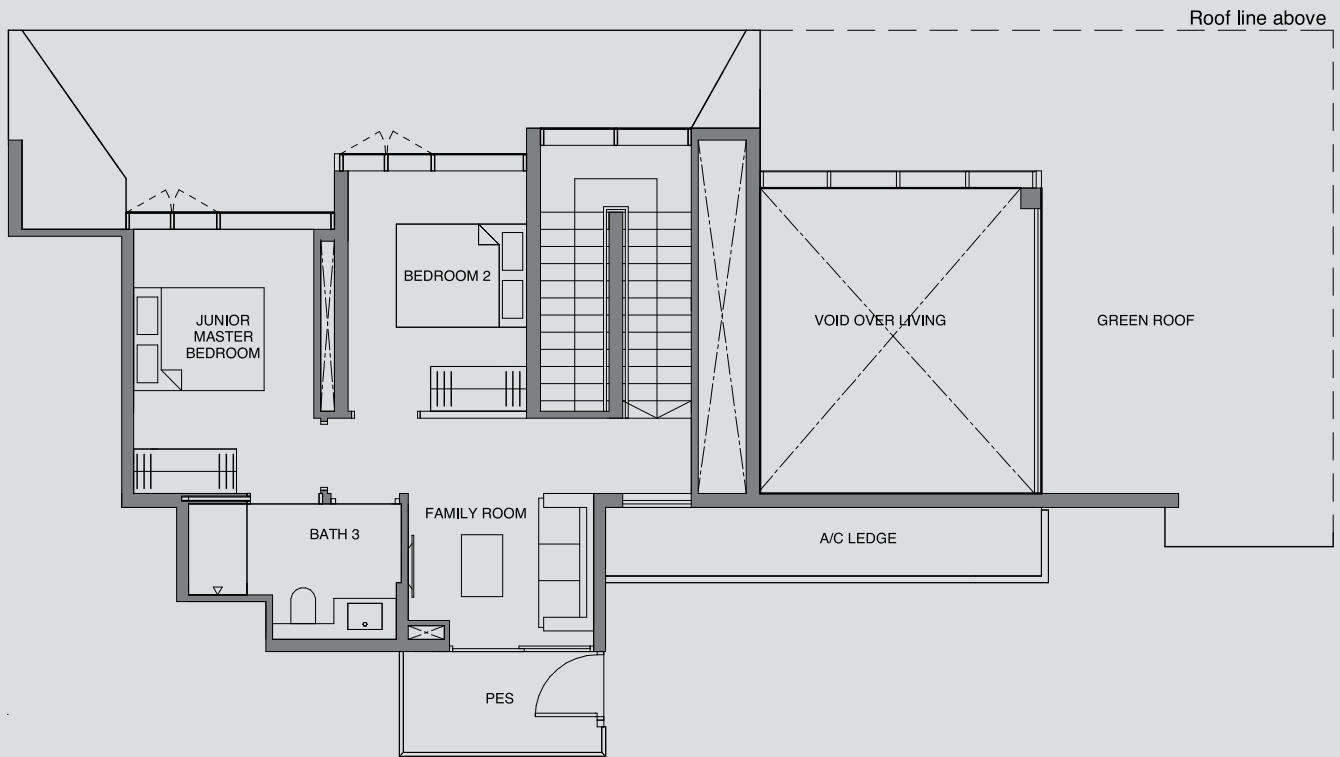


LOWER LEVEL

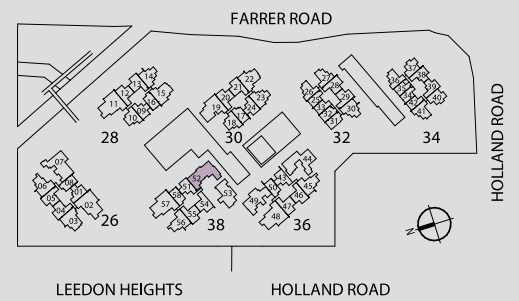
D: Dryer
 DB/ST: Distribution Board / Storage
 F: Fridge
 W: Washer
 * Denotes mirror image

Area includes PES, A/C ledge, balcony and void area (high ceiling). The plans are subject to change as may be required or approved by the relevant authorities. Areas are approximate measurements only and are subject to final survey. Plans are not drawn to scale and do not form part of the contract.

[GARDEN VILLA]



UPPER LEVEL



[GARDEN VILLA]

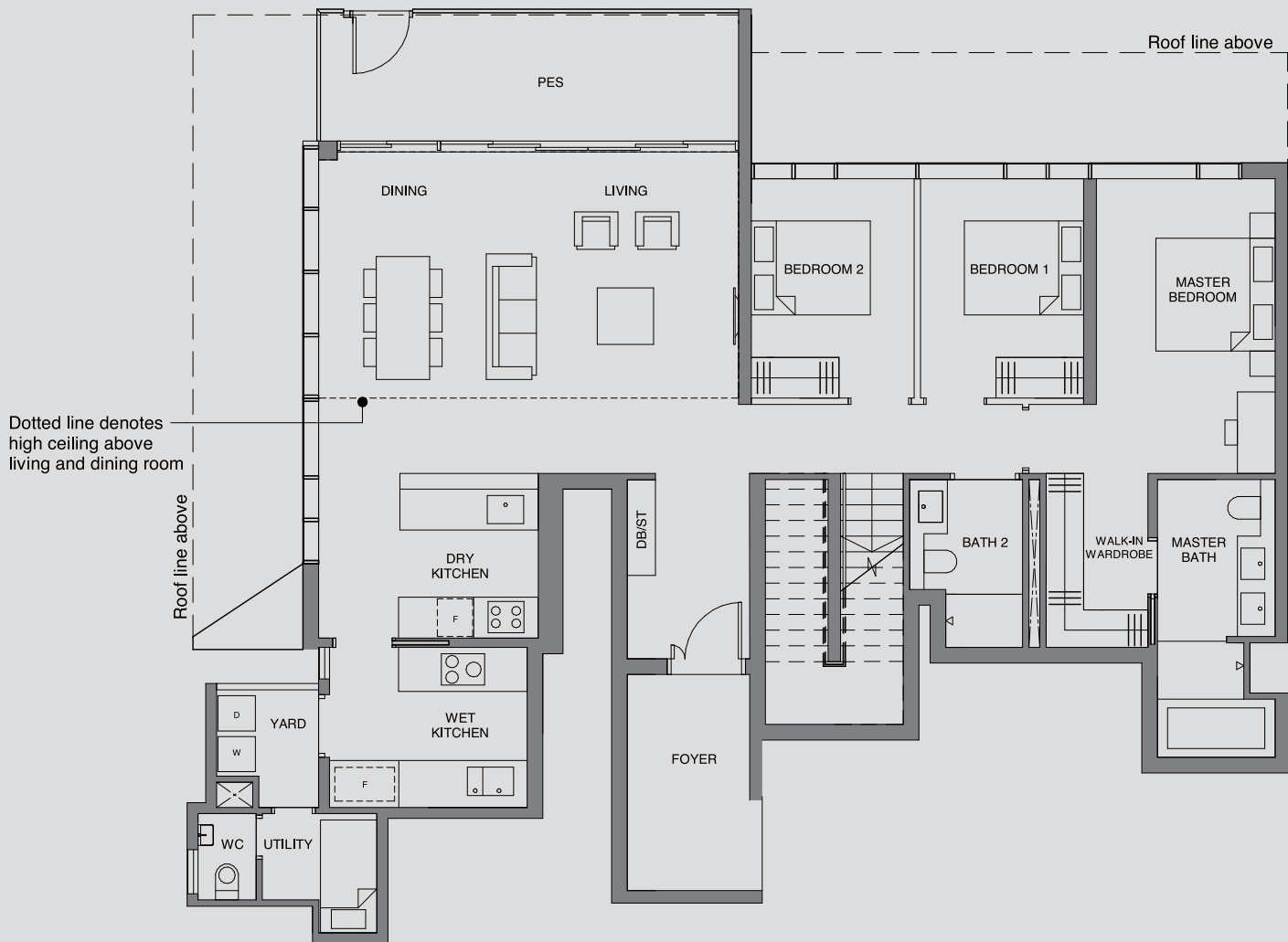
TYPE E4

249 sqm | 2680 sq ft

Incl. of 39 sq m | 420 sq ft of void area

BLOCK 26

#01-07

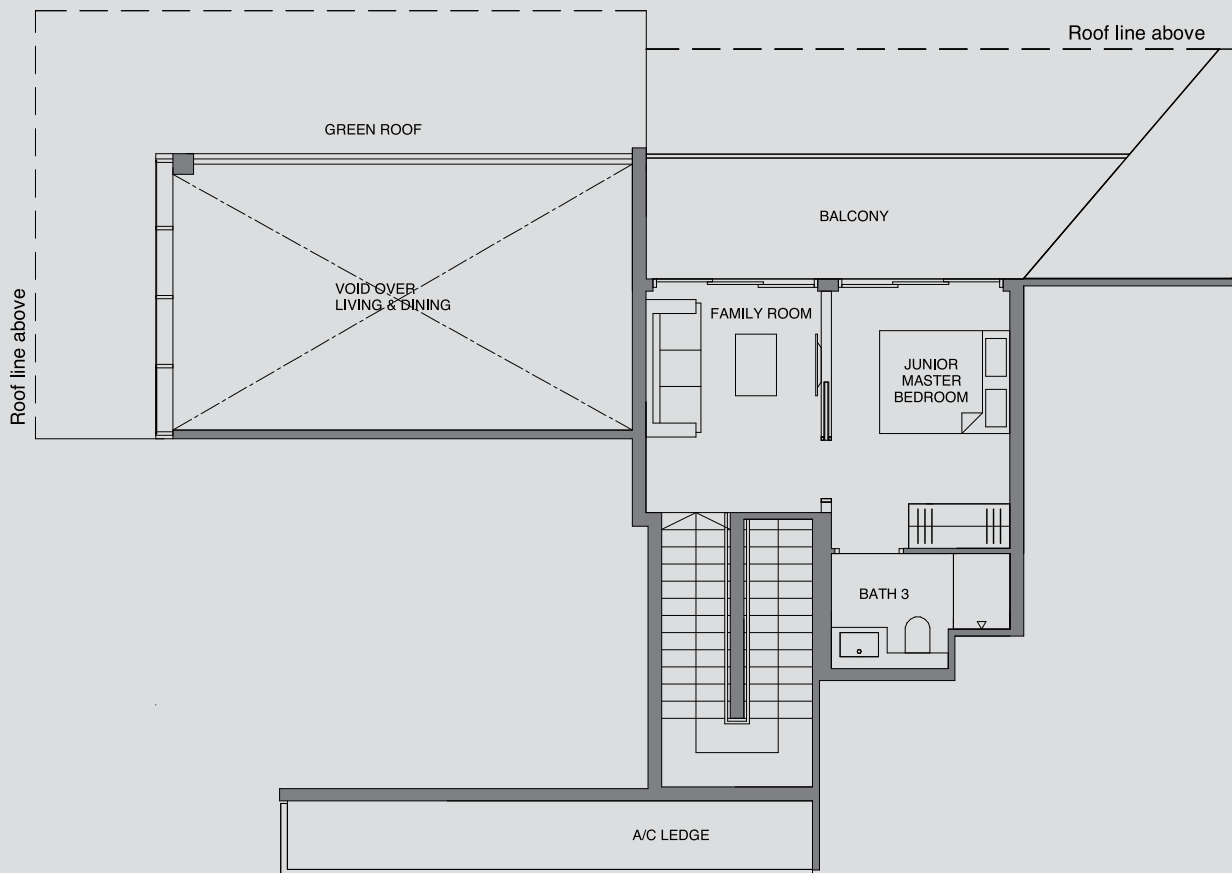


LOWER LEVEL

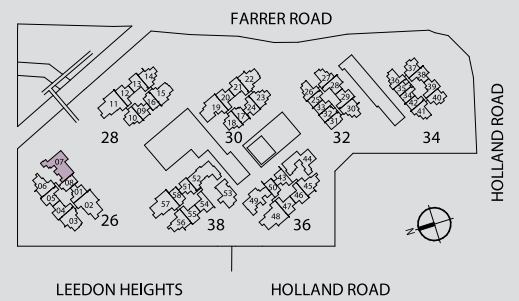
D: Dryer
 DB/ST: Distribution Board / Storage
 F: Fridge
 W: Washer
 * Denotes mirror image

Area includes PES, A/C ledge, balcony and void area (high ceiling). The plans are subject to change as may be required or approved by the relevant authorities. Areas are approximate measurements only and are subject to final survey. Plans are not drawn to scale and do not form part of the contract.

[GARDEN VILLA]



UPPER LEVEL



[GARDEN VILLA]

TYPE E5

223 sqm | 2400 sq ft

Incl. of 23 sq m | 248 sq ft of void area

BLOCK 36

#01-49

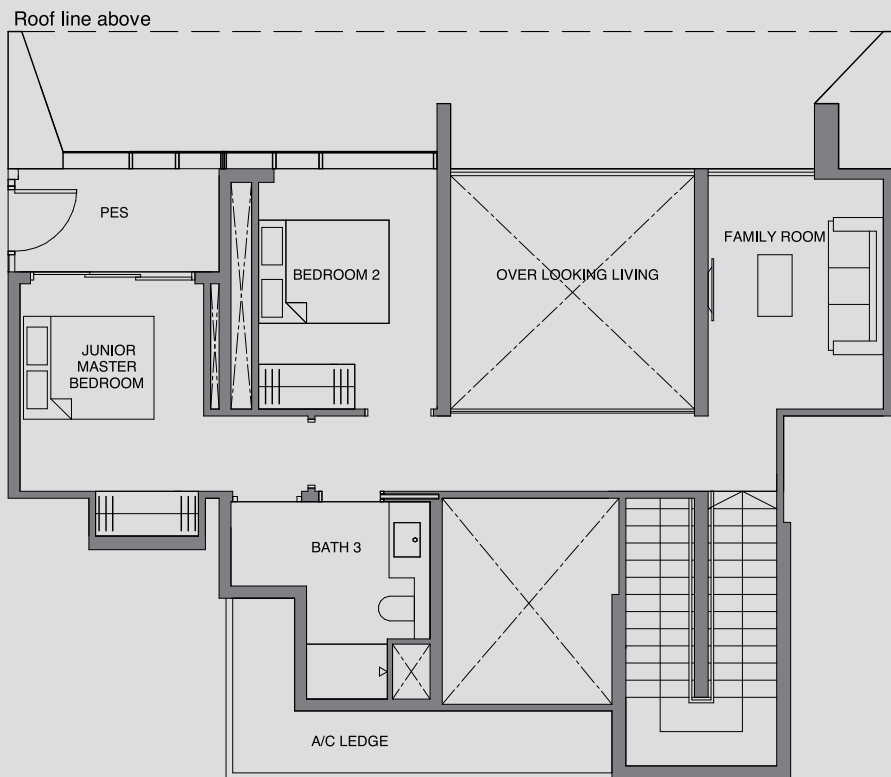


LOWER LEVEL

D: Dryer
 DB/ST: Distribution Board / Storage
 F: Fridge
 W: Washer
 * Denotes mirror image

Area includes PES, A/C ledge, balcony and void area (high ceiling). The plans are subject to change as may be required or approved by the relevant authorities. Areas are approximate measurements only and are subject to final survey. Plans are not drawn to scale and do not form part of the contract.

[GARDEN VILLA]



UPPER LEVEL

