

TYPE B1

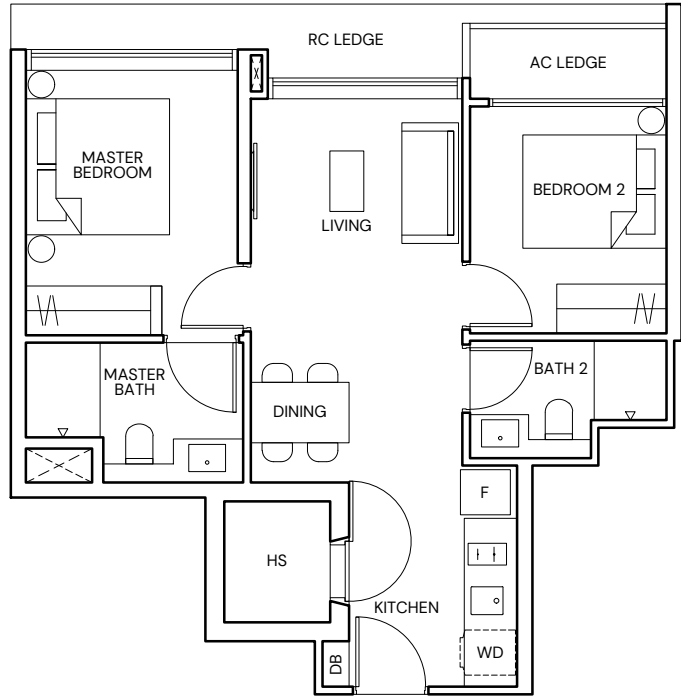
2 BEDROOM

58 SQM/ 624 SQFT

BLOCK 18B

#01-17 TO #03-17

#01-24* TO #03-24*



TYPE B2

2 BEDROOM

63 SQM/ 678 SQFT

BLOCK 18

#01-01 TO #04-01

#01-08* TO #04-08*

BLOCK 18A

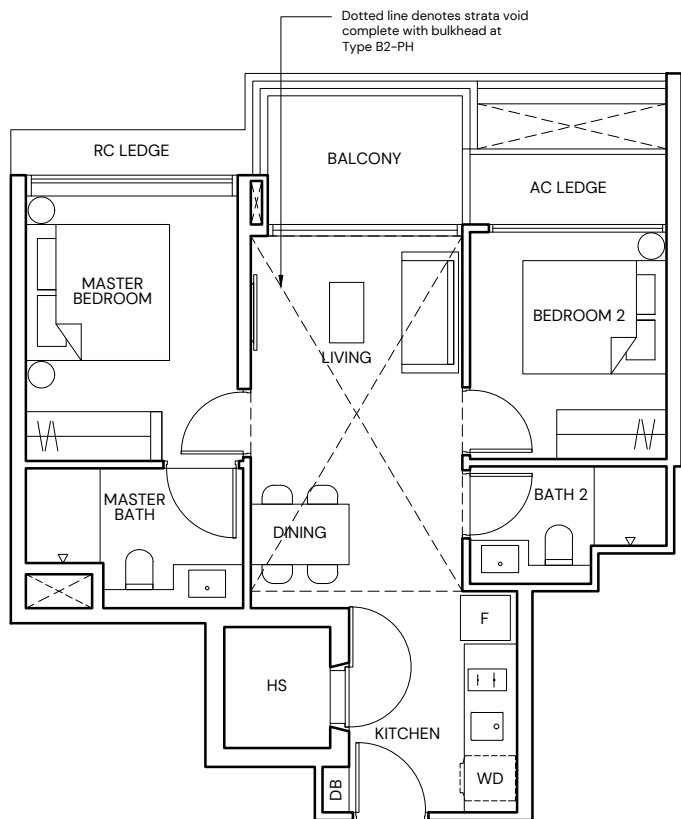
#01-09 TO #04-09

#01-16* TO #04-16*

BLOCK 18B

#04-17

#04-24*



TYPE B2-PH

2 BEDROOM

78 SQM/ 840 SQFT

(INCLUSIVE OF 15 SQM STRATA VOID)

BLOCK 18

#05-01

#05-08*

BLOCK 18A

#05-09

#05-16*

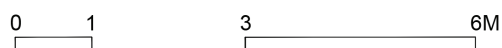
BLOCK 18B

#05-17

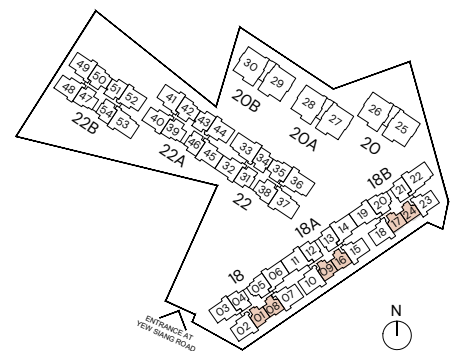
#05-24*

LEGEND

| | | | |
|----|--------------------|----|-----------------------------|
| F | FRIDGE | AC | AIR-CONDITIONER |
| WD | WASHER DRYER COMBO | RC | REINFORCED CONCRETE |
| HS | HOUSEHOLD SHELTER | | (EXCLUDED FROM STRATA AREA) |
| DB | DISTRIBUTION BOARD | | VOID SPACE |
| * | MIRRORED UNIT | | (EXCLUDED FROM STRATA AREA) |



ALL PLANS ARE SUBJECT TO CHANGES BY THE RELEVANT AUTHORITIES.
MEASUREMENTS ARE APPROXIMATE ONLY AND SUBJECT TO FINAL SURVEY.
INFORMATION ACCURATE AT POINT OF PRINTING.
BP NO.: A1716-00007-2021-BP01 DATED 23/12/2022



TYPE B3

2 BEDROOM + STUDY

75 SQM/ 807 SQFT

BLOCK 18

#01-04* TO #04-04*

BLOCK 18A

#01-12* TO #04-12*
#01-13 TO #04-13

BLOCK 18B

#01-21 TO #04-21

BLOCK 22

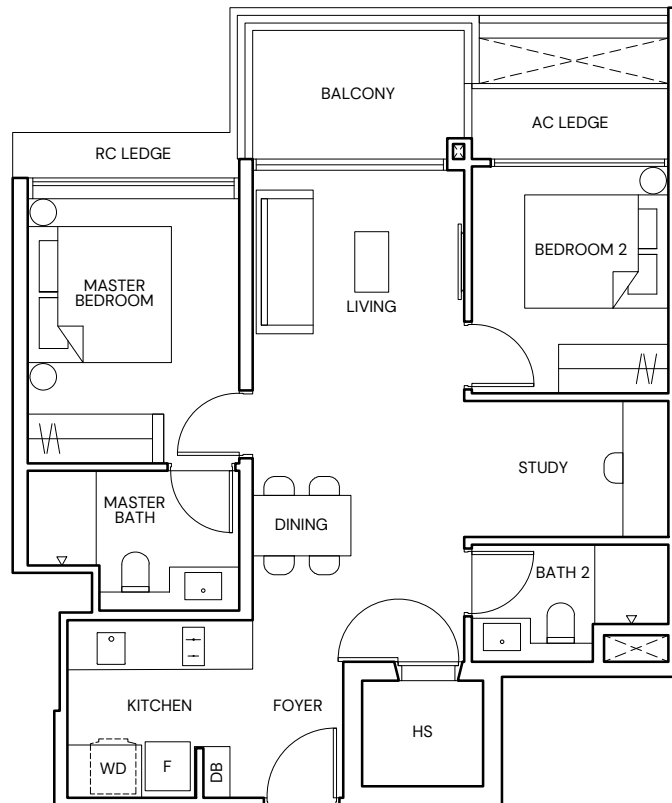
#01-31 TO #04-31
#01-34* TO #04-34*

BLOCK 22A

#01-43 TO #04-43
#01-46* TO #04-46*

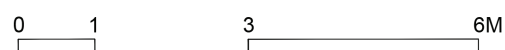
BLOCK 22B

#01-51 TO #04-51
#01-54* TO #04-54*

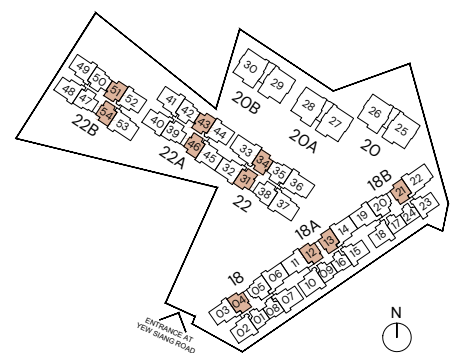


LEGEND

| | | | |
|----|--------------------|----|--|
| F | FRIDGE | AC | AIR-CONDITIONER |
| WD | WASHER DRYER COMBO | RC | REINFORCED CONCRETE (EXCLUDED FROM STRATA AREA) |
| HS | HOUSEHOLD SHELTER | | VOID SPACE (EXCLUDED FROM STRATA AREA) |
| DB | DISTRIBUTION BOARD | | |
| * | MIRRORED UNIT | | |



ALL PLANS ARE SUBJECT TO CHANGES BY THE RELEVANT AUTHORITIES.
MEASUREMENTS ARE APPROXIMATE ONLY AND SUBJECT TO FINAL SURVEY.
INFORMATION ACCURATE AT POINT OF PRINTING.
BP NO.: A1716-00007-2021-BP01 DATED 23/12/2022



TYPE C1

3 BEDROOM

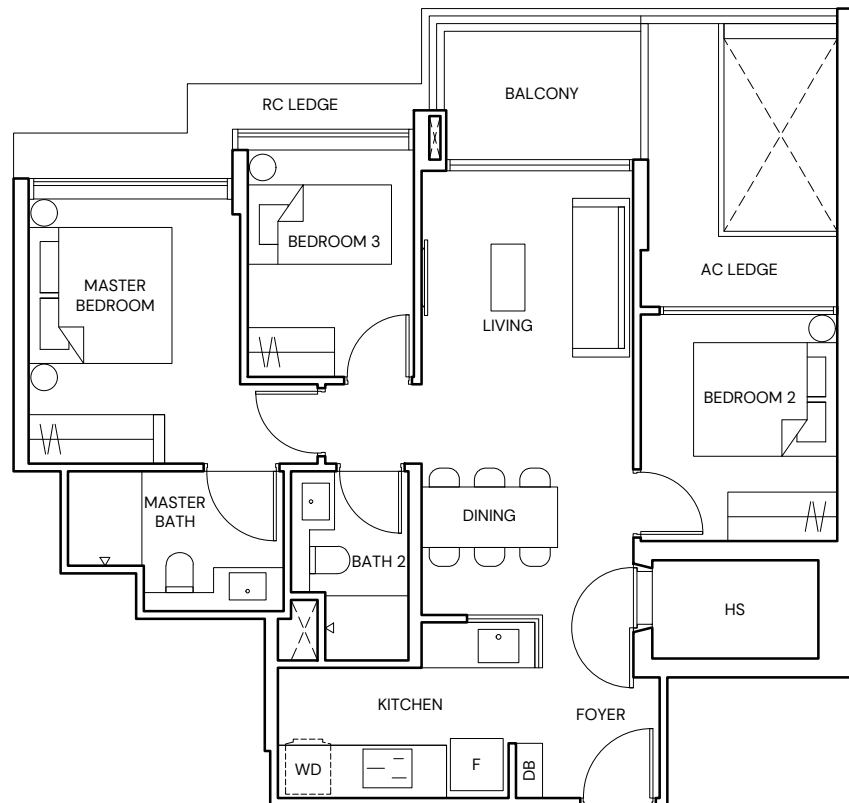
84 SQM/ 904 SQFT

BLOCK 18

#01-05 TO #04-05

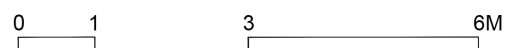
BLOCK 18B

#01-20* TO #04-20*

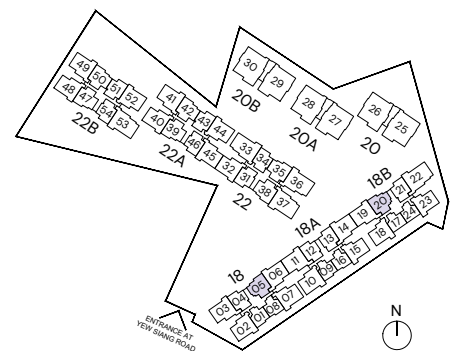


LEGEND

| | | | |
|----|--------------------|----|--|
| F | FRIDGE | AC | AIR-CONDITIONER |
| WD | WASHER DRYER COMBO | RC | REINFORCED CONCRETE (EXCLUDED FROM STRATA AREA) |
| HS | HOUSEHOLD SHELTER | | VOID SPACE (EXCLUDED FROM STRATA AREA) |
| DB | DISTRIBUTION BOARD | | |
| * | MIRRORED UNIT | | |



ALL PLANS ARE SUBJECT TO CHANGES BY THE RELEVANT AUTHORITIES.
MEASUREMENTS ARE APPROXIMATE ONLY AND SUBJECT TO FINAL SURVEY.
INFORMATION ACCURATE AT POINT OF PRINTING.
BP NO.: A1716-00007-2021-BP01 DATED 23/12/2022



TYPE C2

3 BEDROOM

84 SQM/ 904 SQFT

BLOCK 22

#01-35 TO #04-35

#01-38* TO #04-38*

BLOCK 22A

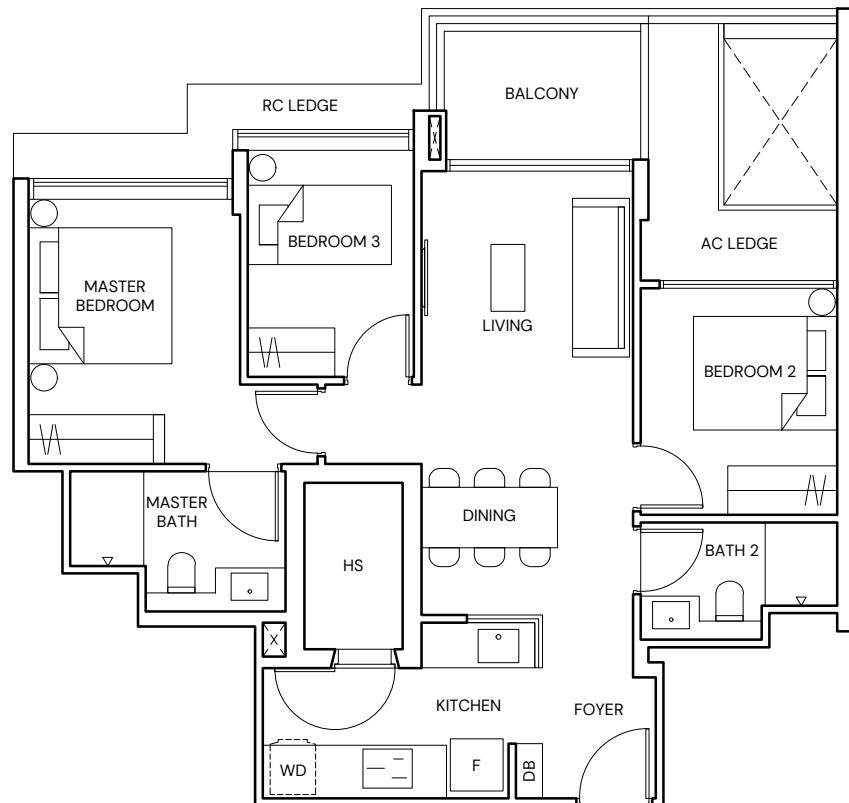
#01-39 TO #04-39

#01-42* TO #04-42*

BLOCK 22B

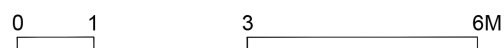
#01-47 TO #04-47

#01-50* TO #04-50*

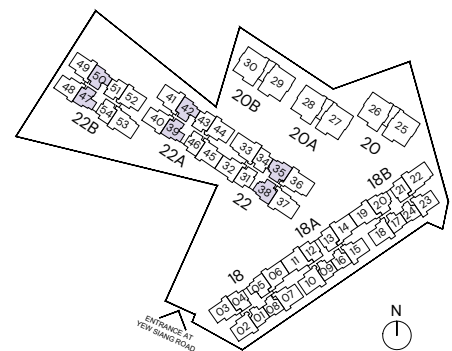


LEGEND

| | | | |
|----|--------------------|----|--|
| F | FRIDGE | AC | AIR-CONDITIONER |
| WD | WASHER DRYER COMBO | RC | REINFORCED CONCRETE (EXCLUDED FROM STRATA AREA) |
| HS | HOUSEHOLD SHELTER | >< | VOID SPACE (EXCLUDED FROM STRATA AREA) |
| DB | DISTRIBUTION BOARD | | |
| * | MIRRORED UNIT | | |



ALL PLANS ARE SUBJECT TO CHANGES BY THE RELEVANT AUTHORITIES.
MEASUREMENTS ARE APPROXIMATE ONLY AND SUBJECT TO FINAL SURVEY.
INFORMATION ACCURATE AT POINT OF PRINTING.
BP NO.: A1716-00007-2021-BP01 DATED 23/12/2022



TYPE C3

3 BEDROOM

90 SQM/ 969 SQFT

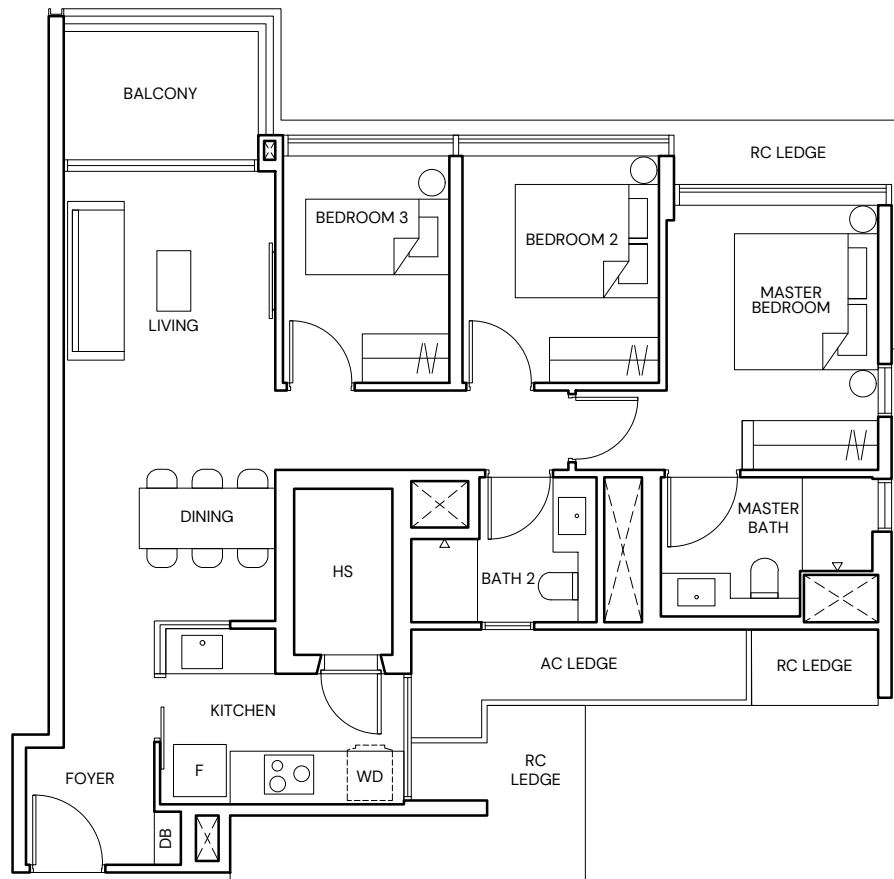
BLOCK 18A

#01-15 TO #04-15

BLOCK 18B

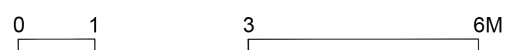
#01-18* TO #04-18*

#01-23 TO #04-23

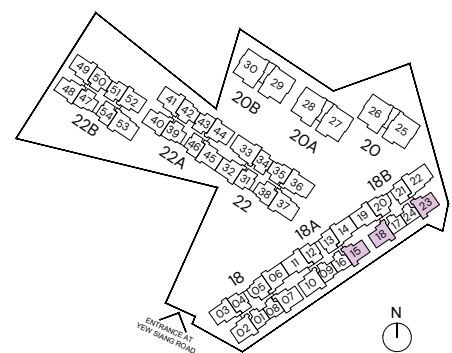


LEGEND

| | | | |
|----|--------------------|----|--|
| F | FRIDGE | AC | AIR-CONDITIONER |
| WD | WASHER DRYER COMBO | RC | REINFORCED CONCRETE (EXCLUDED FROM STRATA AREA) |
| HS | HOUSEHOLD SHELTER | | VOID SPACE (EXCLUDED FROM STRATA AREA) |
| DB | DISTRIBUTION BOARD | | |
| * | MIRRORED UNIT | | |



ALL PLANS ARE SUBJECT TO CHANGES BY THE RELEVANT AUTHORITIES.
MEASUREMENTS ARE APPROXIMATE ONLY AND SUBJECT TO FINAL SURVEY.
INFORMATION ACCURATE AT POINT OF PRINTING.
BP NO.: A1716-00007-2021-BP01 DATED 23/12/2022



TYPE C4

3 BEDROOM

100 SQM/ 1076 SQFT

BLOCK 18

#01-02 TO #04-02

BLOCK 18A

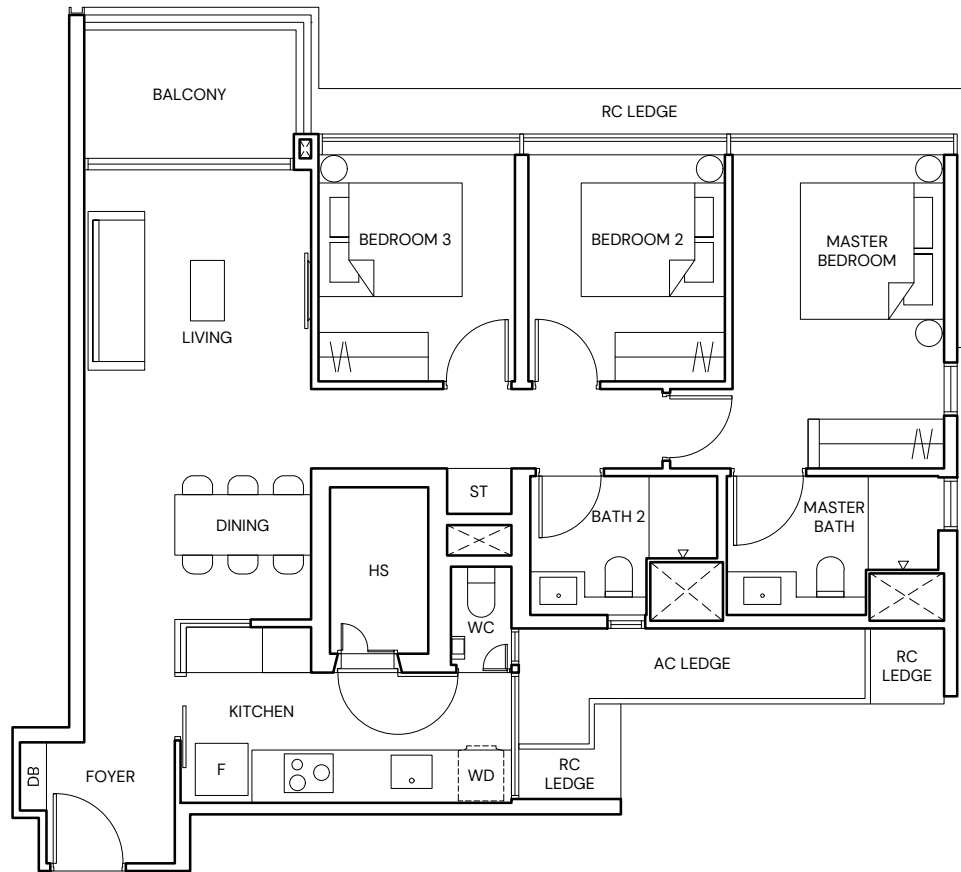
#01-10 TO #04-10

BLOCK 22A

#01-44 TO #04-44

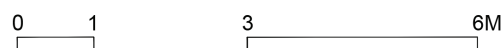
BLOCK 22B

#01-52 TO #04-52

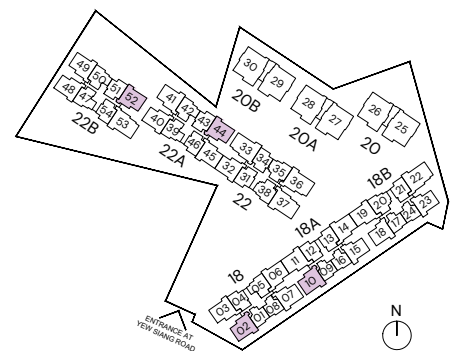


LEGEND

| | | | |
|----|--------------------|----|--|
| F | FRIDGE | AC | AIR-CONDITIONER |
| WD | WASHER DRYER COMBO | RC | REINFORCED CONCRETE (EXCLUDED FROM STRATA AREA) |
| HS | HOUSEHOLD SHELTER | ∞ | VOID SPACE (EXCLUDED FROM STRATA AREA) |
| DB | DISTRIBUTION BOARD | | |
| ST | STORE | | |
| WC | WATER CLOSET | | |



ALL PLANS ARE SUBJECT TO CHANGES BY THE RELEVANT AUTHORITIES.
MEASUREMENTS ARE APPROXIMATE ONLY AND SUBJECT TO FINAL SURVEY.
INFORMATION ACCURATE AT POINT OF PRINTING.
BP NO.: A1716-00007-2021-BP01 DATED 23/12/2022



TYPE C5

3 BEDROOM

101 SQM/ 1087 SQFT

BLOCK 18

#01-07 TO #04-07

BLOCK 22

#01-32* TO #04-32*

BLOCK 22A

#01-40* TO #04-40*

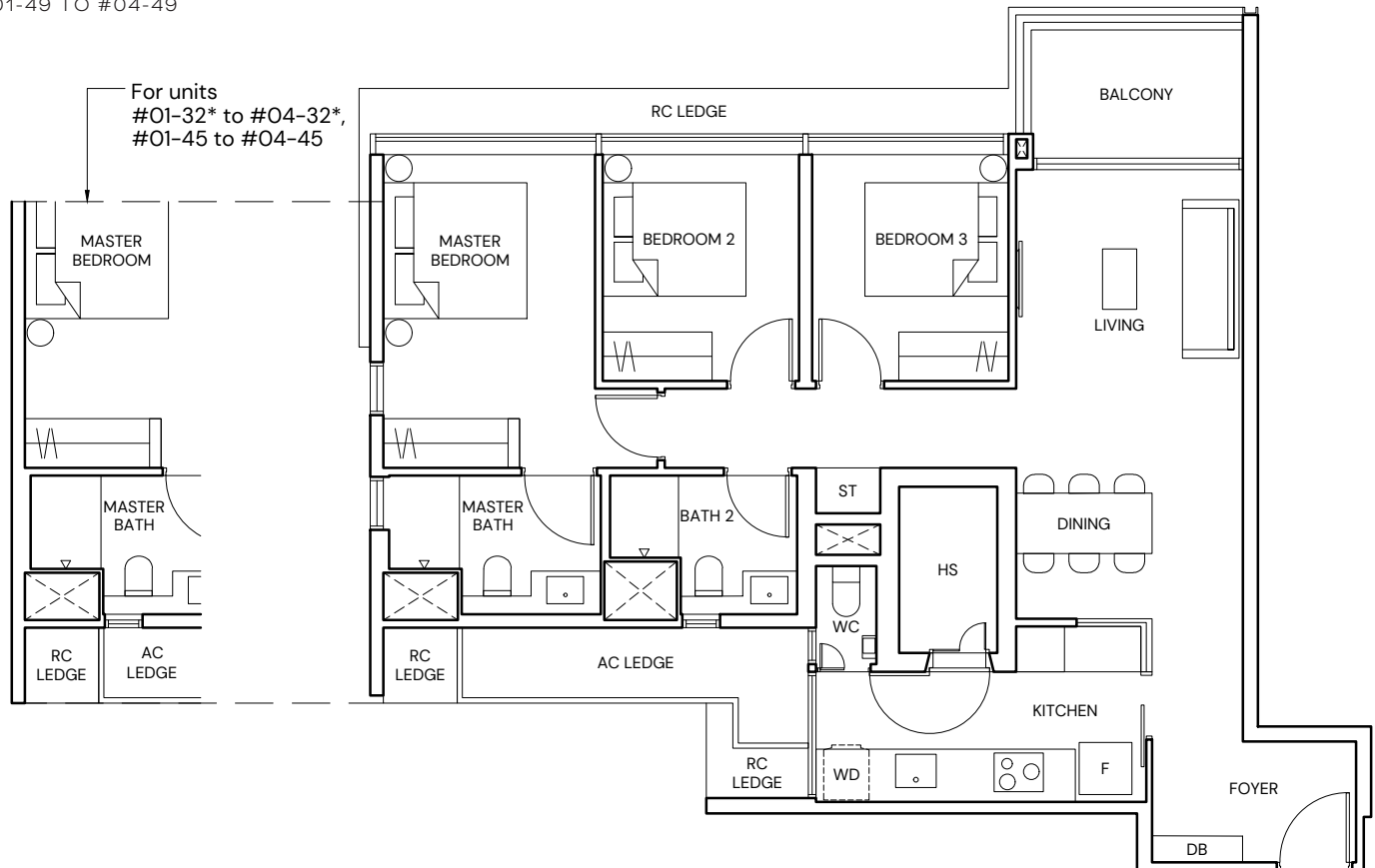
#01-41 TO #04-41

#01-45 TO #04-45

BLOCK 22B

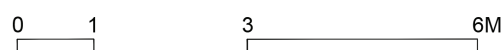
#01-48* TO #04-48*

#01-49 TO #04-49



LEGEND

| | | | |
|----|--------------------|----|--|
| F | FRIDGE | AC | AIR-CONDITIONER |
| WD | WASHER DRYER COMBO | RC | REINFORCED CONCRETE (EXCLUDED FROM STRATA AREA) |
| HS | HOUSEHOLD SHELTER | | VOID SPACE (EXCLUDED FROM STRATA AREA) |
| DB | DISTRIBUTION BOARD | | |
| ST | STORE | | |
| WC | WATER CLOSET | | |
| * | MIRRORED UNIT | | |



ALL PLANS ARE SUBJECT TO CHANGES BY THE RELEVANT AUTHORITIES.
MEASUREMENTS ARE APPROXIMATE ONLY AND SUBJECT TO FINAL SURVEY.
INFORMATION ACCURATE AT POINT OF PRINTING.
BP NO.: A1716-00007-2021-BP01 DATED 23/12/2022



TYPE C6

3 BEDROOM

102 SQM/ 1098 SQFT

BLOCK 18

#01-03 TO #04-03

#01-06* TO #04-06*

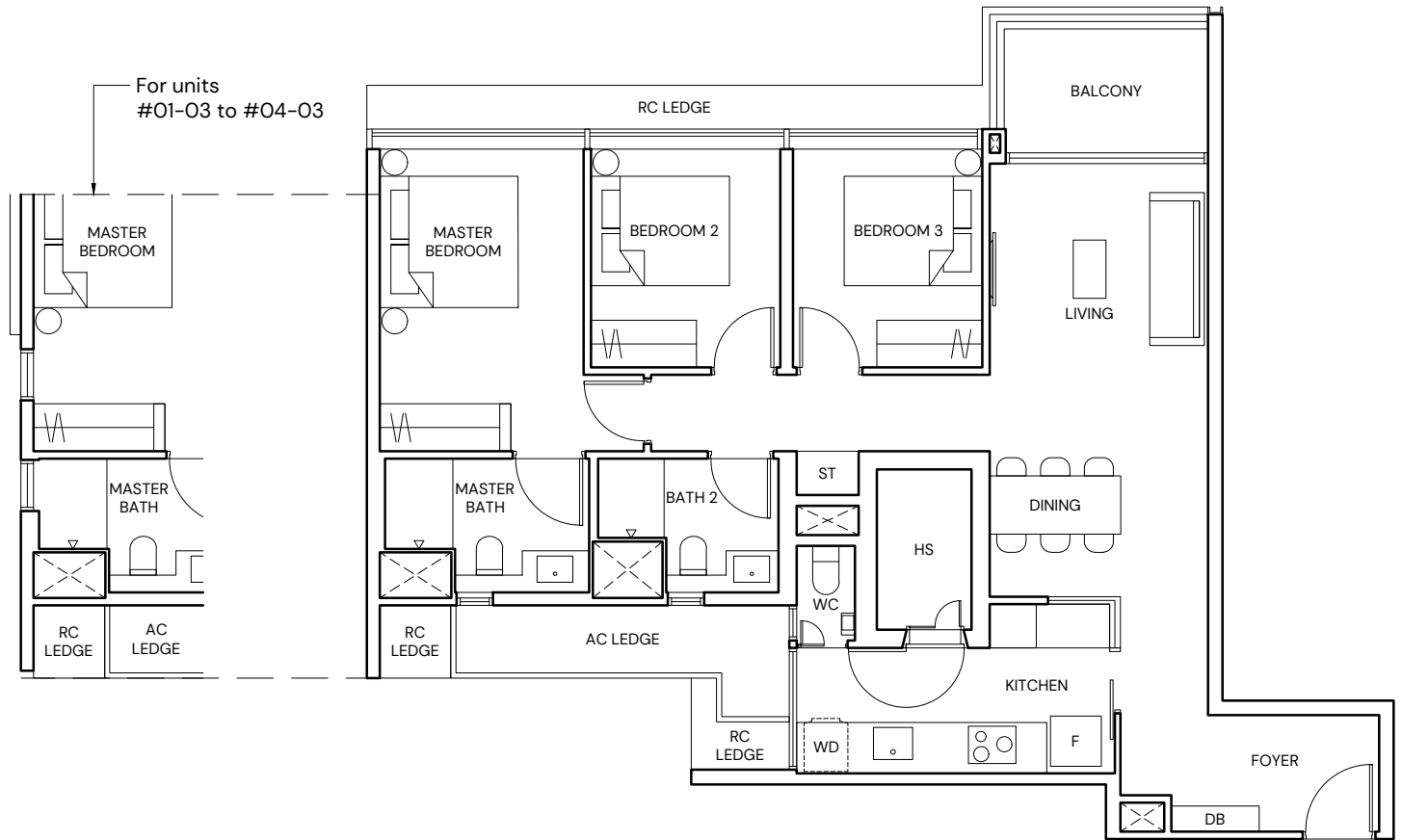
BLOCK 18A

#01-11 TO #04-11

#01-14* TO #04-14*

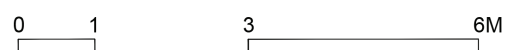
BLOCK 18B

#01-19 TO #04-19

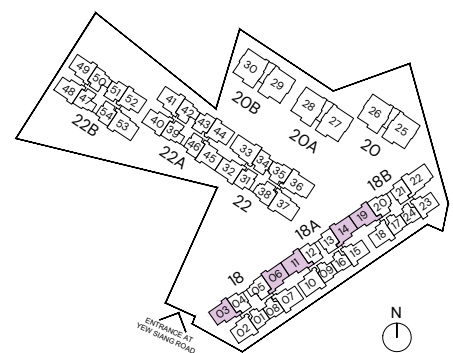


LEGEND

| | | | |
|----|--------------------|----|--|
| F | FRIDGE | AC | AIR-CONDITIONER |
| WD | WASHER DRYER COMBO | RC | REINFORCED CONCRETE (EXCLUDED FROM STRATA AREA) |
| HS | HOUSEHOLD SHELTER | | VOID SPACE (EXCLUDED FROM STRATA AREA) |
| DB | DISTRIBUTION BOARD | | |
| ST | STORE | | |
| WC | WATER CLOSET | | |
| * | MIRRORED UNIT | | |



ALL PLANS ARE SUBJECT TO CHANGES BY THE RELEVANT AUTHORITIES.
MEASUREMENTS ARE APPROXIMATE ONLY AND SUBJECT TO FINAL SURVEY.
INFORMATION ACCURATE AT POINT OF PRINTING.
BP NO.: A1716-00007-2021-BP01 DATED 23/12/2022



TYPE C7-PH

3 BEDROOM

116 SQM/ 1249 SQFT
(INCLUSIVE OF 20 SQM STRATA VOID)

BLOCK 18

#05-04*

BLOCK 18A

#05-12*

#05-13

BLOCK 18B

#05-21

BLOCK 22

#05-31

#05-34*

BLOCK 22A

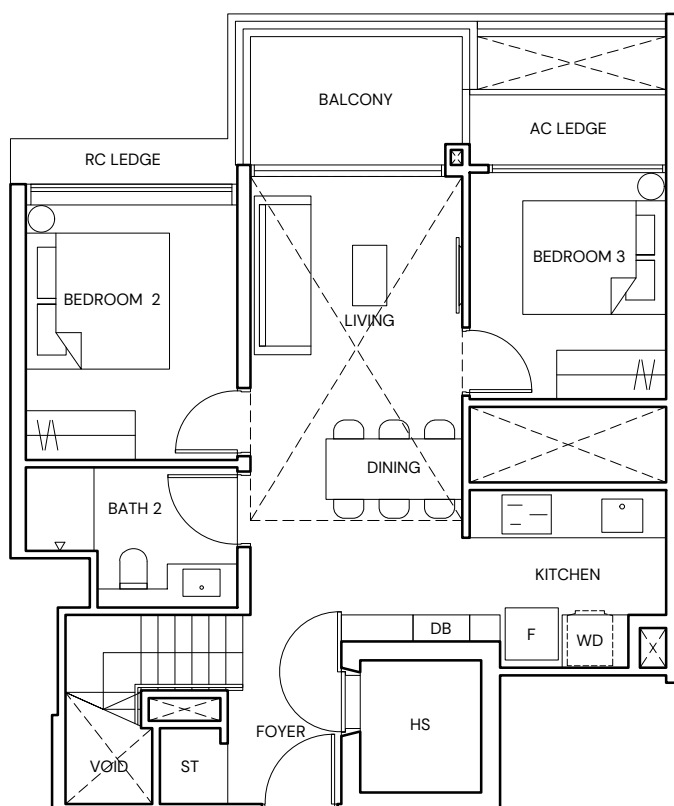
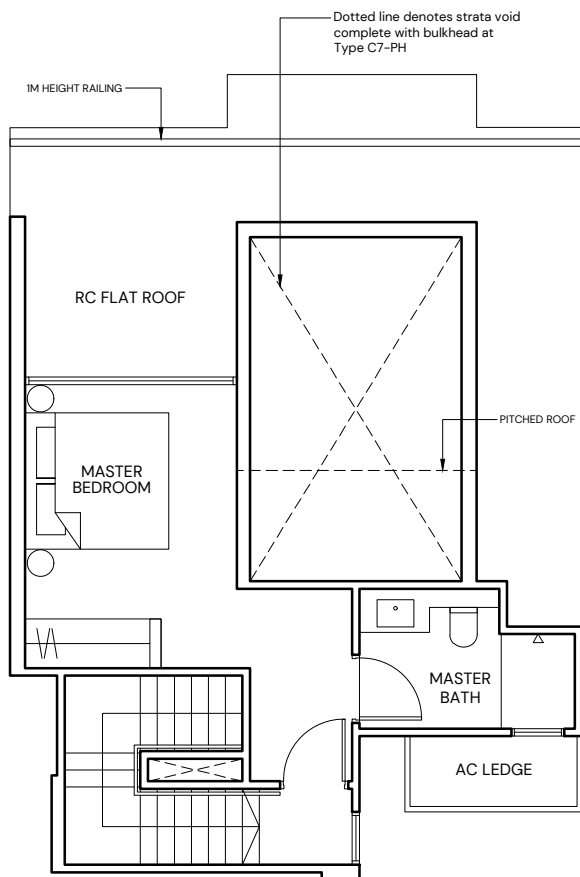
#05-43

#05-46*

BLOCK 22B

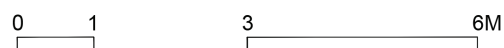
#05-51

#05-54*

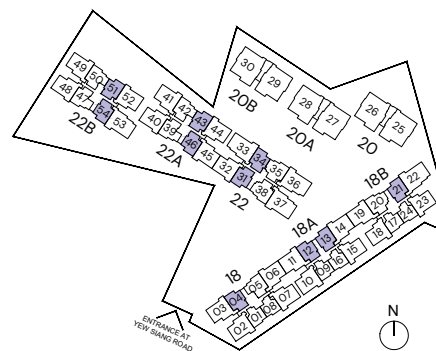


LEGEND

| | | | |
|----|--------------------|----|--|
| F | FRIDGE | AC | AIR-CONDITIONER |
| WD | WASHER DRYER COMBO | RC | REINFORCED CONCRETE (EXCLUDED FROM STRATA AREA) |
| HS | HOUSEHOLD SHELTER | >< | VOID SPACE (EXCLUDED FROM STRATA AREA) |
| DB | DISTRIBUTION BOARD | | |
| ST | STORE | | |
| * | MIRRORED UNIT | | |



ALL PLANS ARE SUBJECT TO CHANGES BY THE RELEVANT AUTHORITIES.
MEASUREMENTS ARE APPROXIMATE ONLY AND SUBJECT TO FINAL SURVEY.
INFORMATION ACCURATE AT POINT OF PRINTING.
BP NO.: A1716-00007-2021-BP01 DATED 23/12/2022



TYPE C8-PH

3 BEDROOM

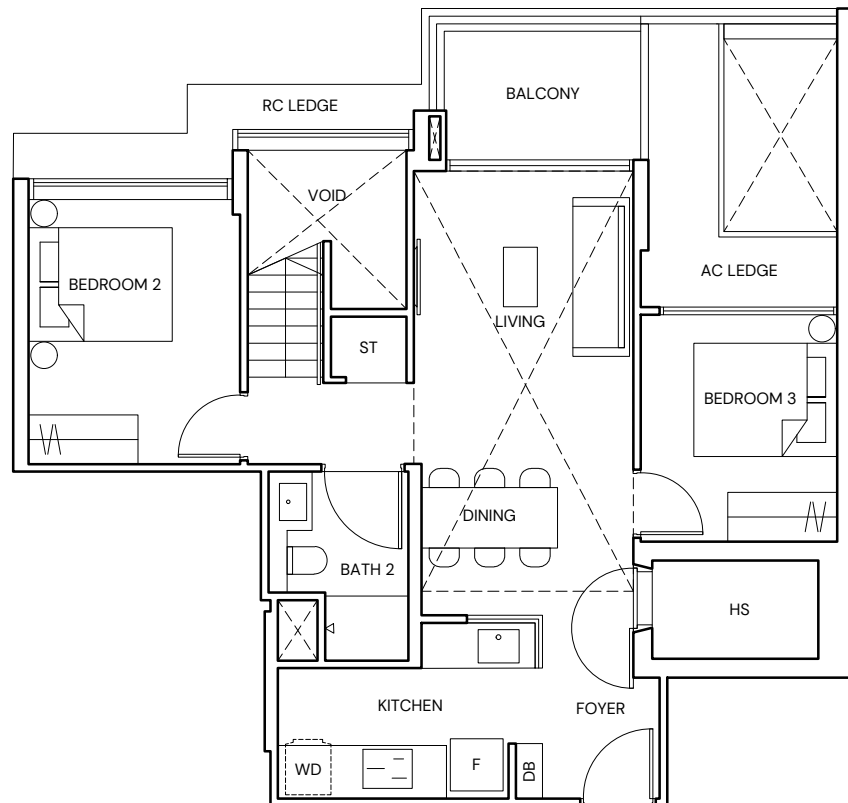
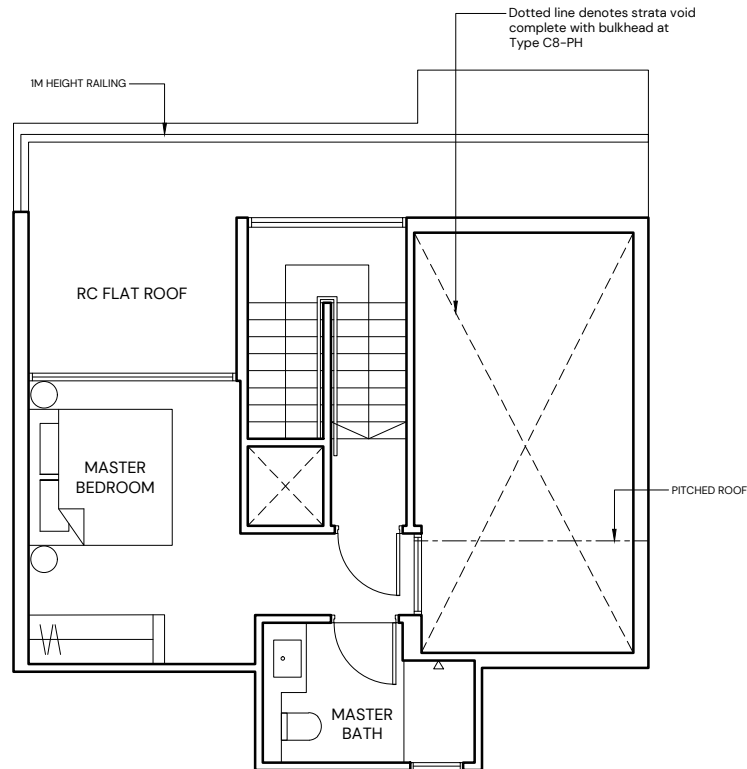
124 SQM/ 1335 SQFT
(INCLUSIVE OF 24 SQM STRATA VOID)

BLOCK 18

#05-05

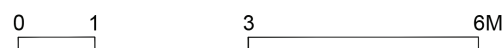
BLOCK 18B

#05-20*

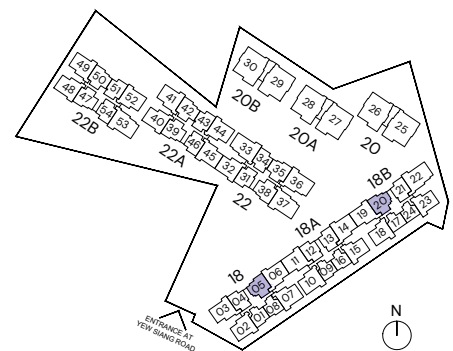


LEGEND

| | | | |
|----|--------------------|------|--|
| F | FRIDGE | AC | AIR-CONDITIONER |
| WD | WASHER DRYER COMBO | RC | REINFORCED CONCRETE (EXCLUDED FROM STRATA AREA) |
| HS | HOUSEHOLD SHELTER | [X] | VOID SPACE (EXCLUDED FROM STRATA AREA) |
| DB | DISTRIBUTION BOARD | [><] | |
| ST | STORE | | |
| * | MIRRORED UNIT | | |



ALL PLANS ARE SUBJECT TO CHANGES BY THE RELEVANT AUTHORITIES.
MEASUREMENTS ARE APPROXIMATE ONLY AND SUBJECT TO FINAL SURVEY.
INFORMATION ACCURATE AT POINT OF PRINTING.
BP NO.: A1716-00007-2021-BP01 DATED 23/12/2022



TYPE C9-PH

3 BEDROOM

124 SQM/ 1335 SQFT
(INCLUSIVE OF 24 SQM STRATA VOID)

BLOCK 22

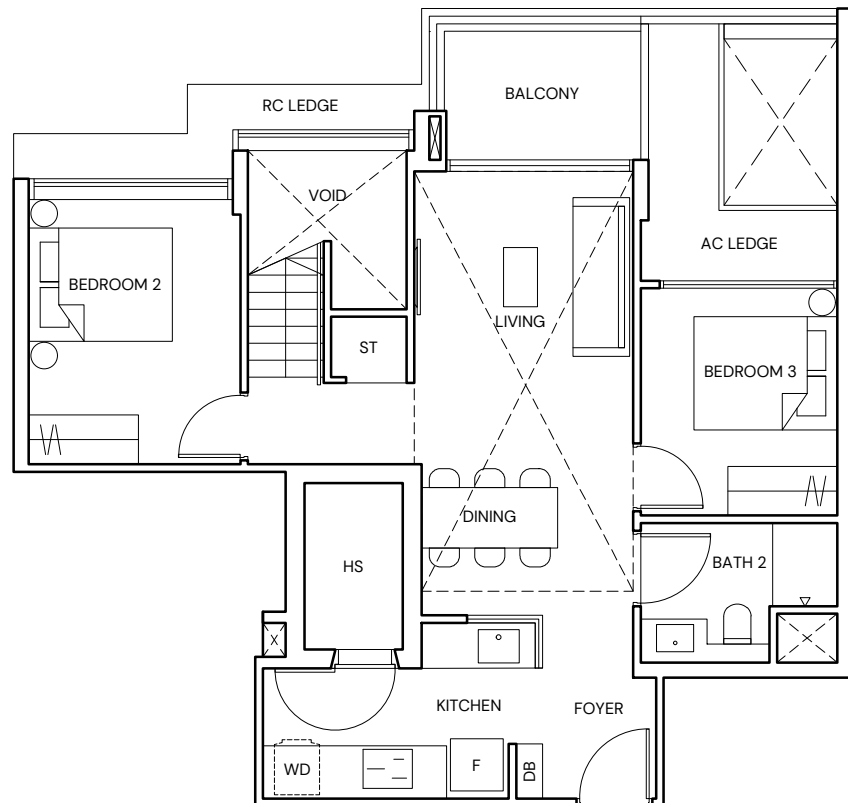
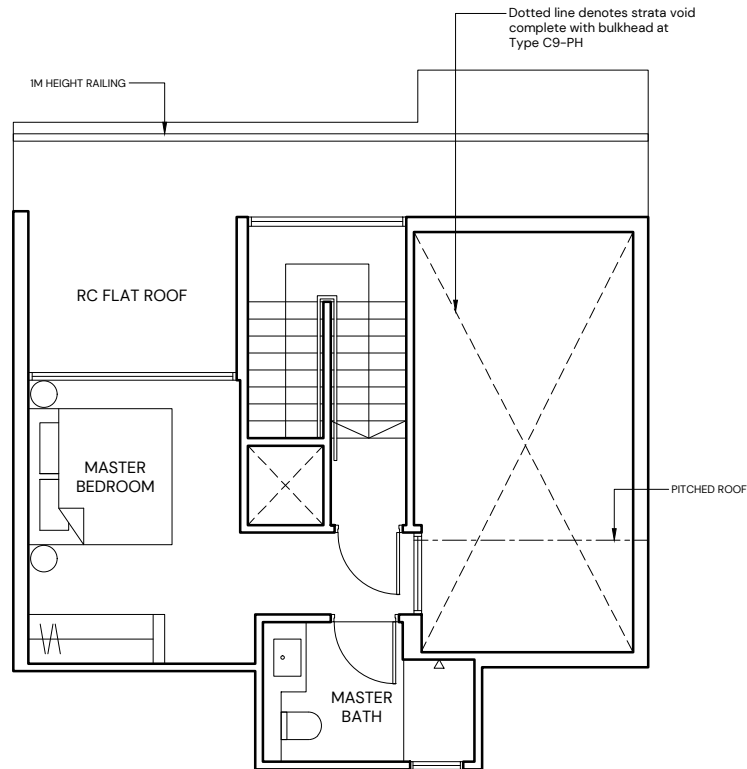
#05-35
#05-38*

BLOCK 22A

#05-39
#05-42*

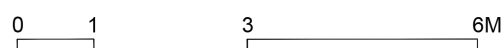
BLOCK 22B

#05-47
#05-50*

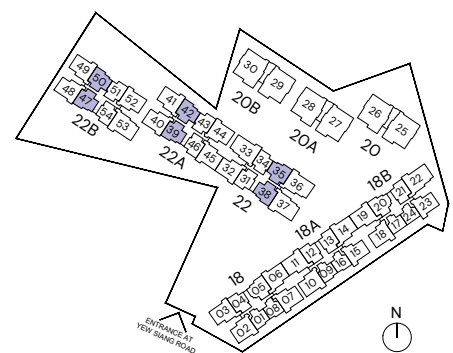


LEGEND

| | | | |
|----|--------------------|----|--|
| F | FRIDGE | AC | AIR-CONDITIONER |
| WD | WASHER DRYER COMBO | RC | REINFORCED CONCRETE (EXCLUDED FROM STRATA AREA) |
| HS | HOUSEHOLD SHELTER | | VOID SPACE (EXCLUDED FROM STRATA AREA) |
| DB | DISTRIBUTION BOARD | | |
| ST | STORE | | |
| * | MIRRORED UNIT | | |



ALL PLANS ARE SUBJECT TO CHANGES BY THE RELEVANT AUTHORITIES.
MEASUREMENTS ARE APPROXIMATE ONLY AND SUBJECT TO FINAL SURVEY.
INFORMATION ACCURATE AT POINT OF PRINTING.
BP NO.: A1716-00007-2021-BP01 DATED 23/12/2022



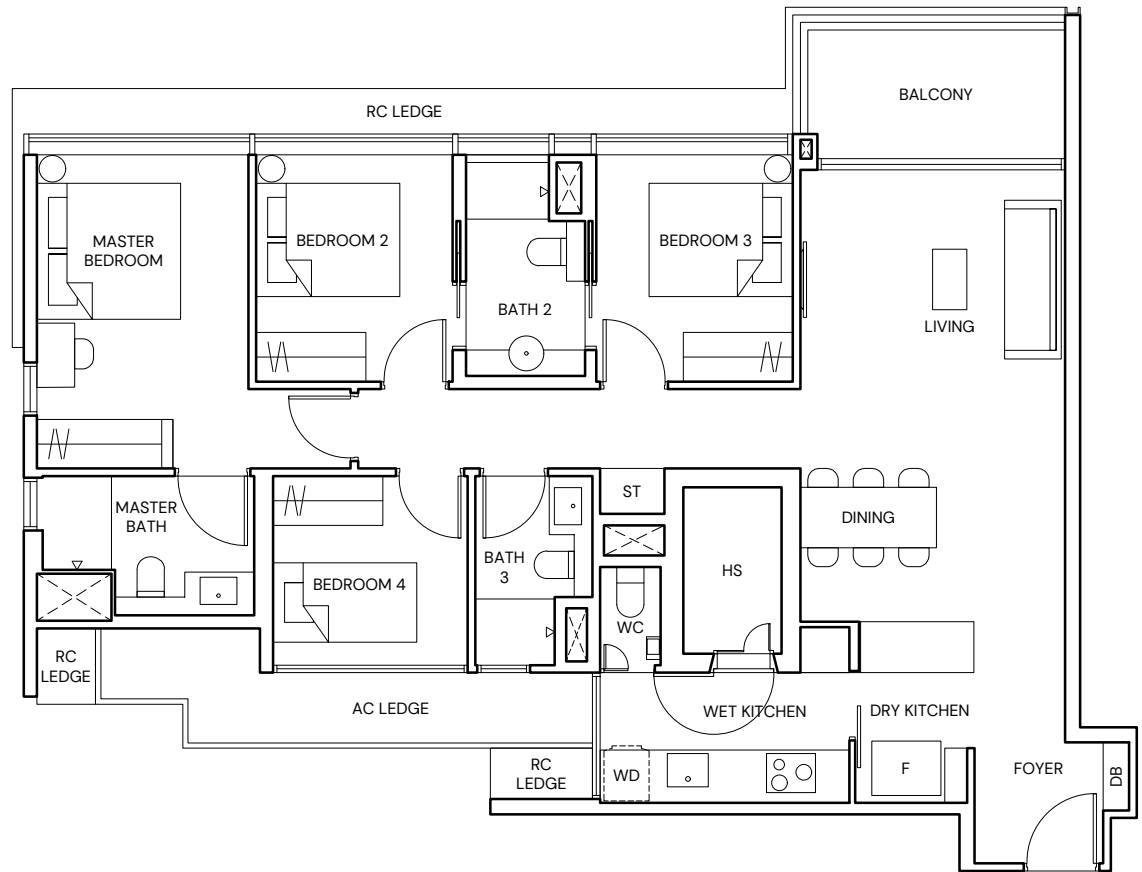
TYPE D1

4 BEDROOM

121 SQM/ 1302 SQFT

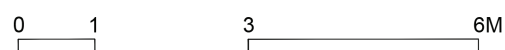
BLOCK 22

#01-33 TO #04-33

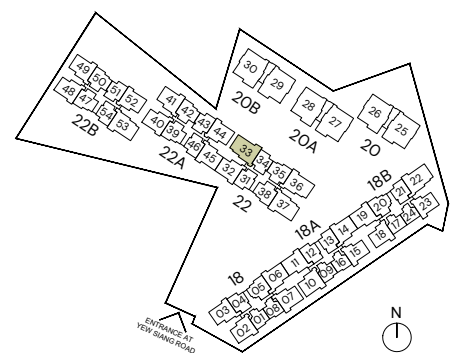


LEGEND

| | | | |
|----|--------------------|----|--|
| F | FRIDGE | AC | AIR-CONDITIONER |
| WD | WASHER DRYER COMBO | RC | REINFORCED CONCRETE (EXCLUDED FROM STRATA AREA) |
| HS | HOUSEHOLD SHELTER | | VOID SPACE (EXCLUDED FROM STRATA AREA) |
| DB | DISTRIBUTION BOARD | | |
| ST | STORE | | |
| WC | WATER CLOSET | | |



ALL PLANS ARE SUBJECT TO CHANGES BY THE RELEVANT AUTHORITIES.
MEASUREMENTS ARE APPROXIMATE ONLY AND SUBJECT TO FINAL SURVEY.
INFORMATION ACCURATE AT POINT OF PRINTING.
BP NO.: A1716-00007-2021-BP01 DATED 23/12/2022



TYPE D2

4 BEDROOM

122 SQM/ 1313 SQFT

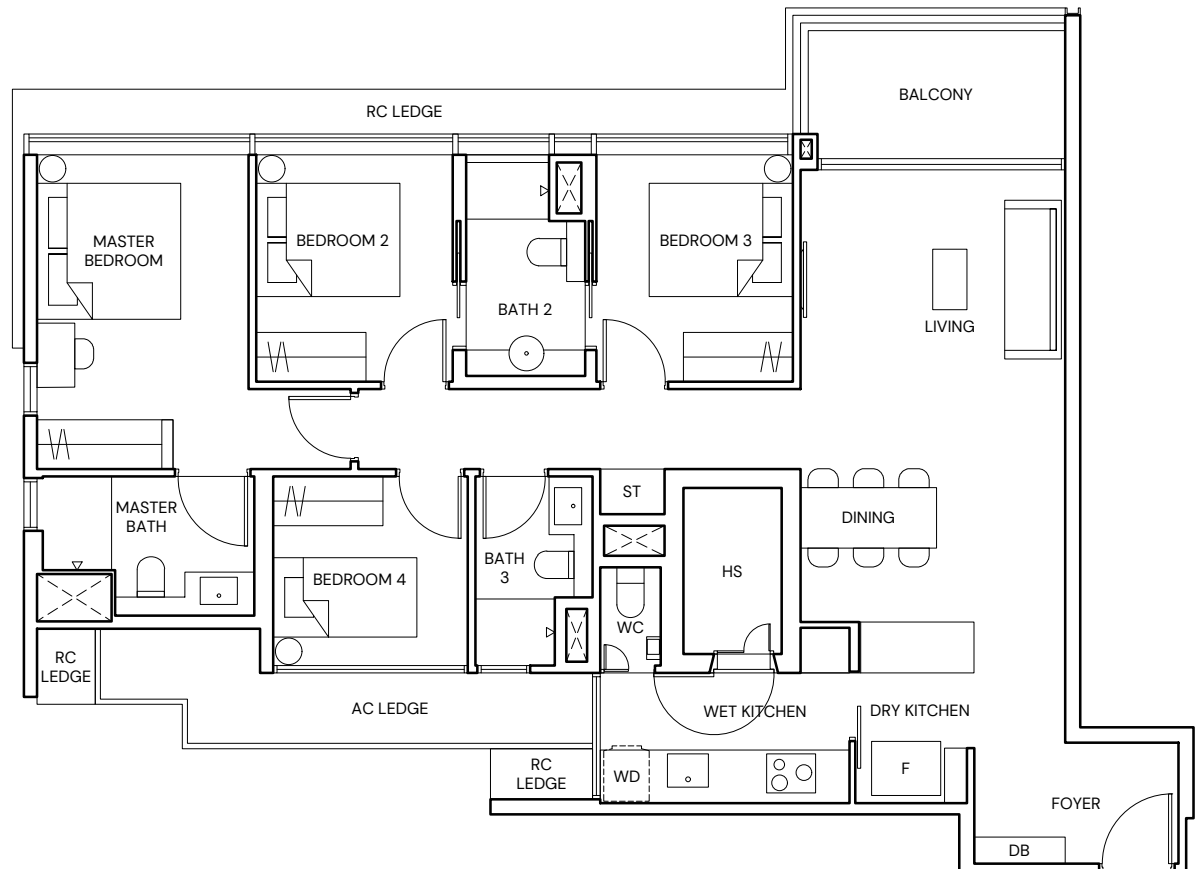
BLOCK 22

#01-36* TO #04-36*

#01-37 TO #04-37

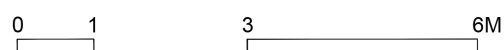
BLOCK 22B

#01-53 TO #04-53

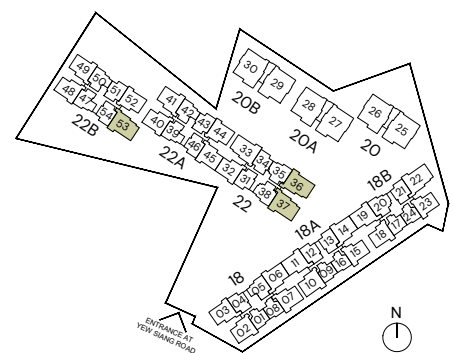


LEGEND

| | | | |
|----|--------------------|----|--|
| F | FRIDGE | AC | AIR-CONDITIONER |
| WD | WASHER DRYER COMBO | RC | REINFORCED CONCRETE (EXCLUDED FROM STRATA AREA) |
| HS | HOUSEHOLD SHELTER | | VOID SPACE (EXCLUDED FROM STRATA AREA) |
| DB | DISTRIBUTION BOARD | | |
| ST | STORE | | |
| WC | WATER CLOSET | | |
| * | MIRRORED UNIT | | |



ALL PLANS ARE SUBJECT TO CHANGES BY THE RELEVANT AUTHORITIES.
MEASUREMENTS ARE APPROXIMATE ONLY AND SUBJECT TO FINAL SURVEY.
INFORMATION ACCURATE AT POINT OF PRINTING.
BP NO.: A1716-00007-2021-BP01 DATED 23/12/2022



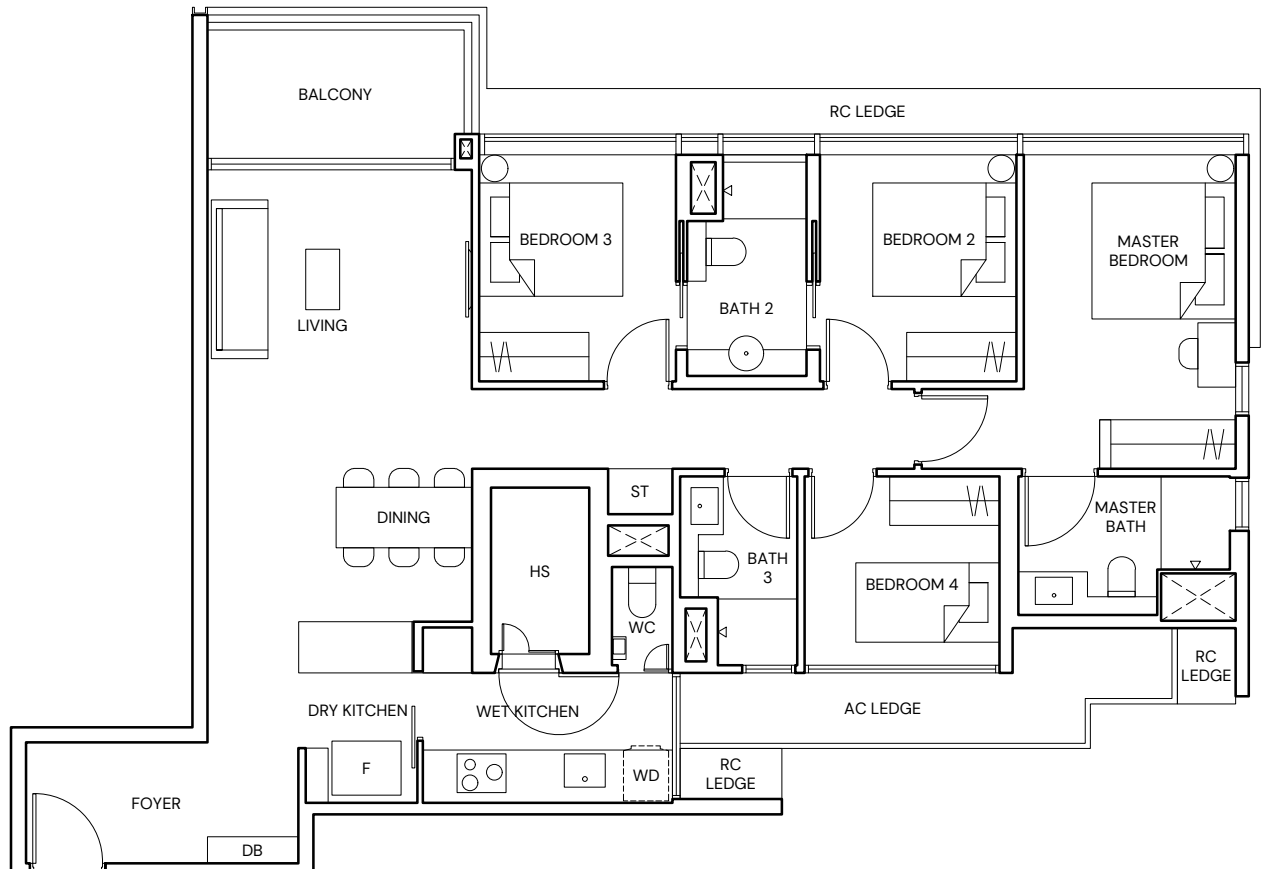
TYPE D3

4 BEDROOM

124 SQM/ 1335 SQFT

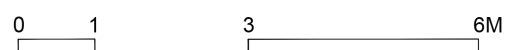
BLOCK 18B

#01-22 TO #04-22

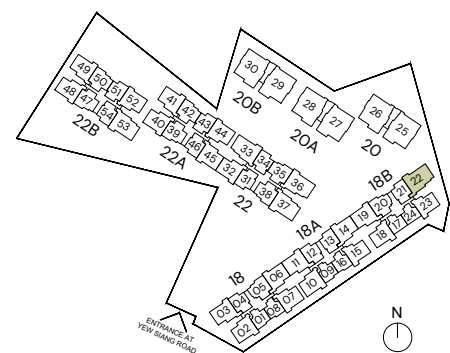


LEGEND

| | | | |
|----|--------------------|----|--|
| F | FRIDGE | AC | AIR-CONDITIONER |
| WD | WASHER DRYER COMBO | RC | REINFORCED CONCRETE (EXCLUDED FROM STRATA AREA) |
| HS | HOUSEHOLD SHELTER | | VOID SPACE (EXCLUDED FROM STRATA AREA) |
| DB | DISTRIBUTION BOARD | | |
| ST | STORE | | |
| WC | WATER CLOSET | | |



ALL PLANS ARE SUBJECT TO CHANGES BY THE RELEVANT AUTHORITIES.
MEASUREMENTS ARE APPROXIMATE ONLY AND SUBJECT TO FINAL SURVEY.
INFORMATION ACCURATE AT POINT OF PRINTING.
BP NO.: A1716-00007-2021-BP01 DATED 23/12/2022



TYPE D4-PH

4 BEDROOM

143 SQM/ 1539 SQFT
(INCLUSIVE OF 26 SQM STRATA VOID)

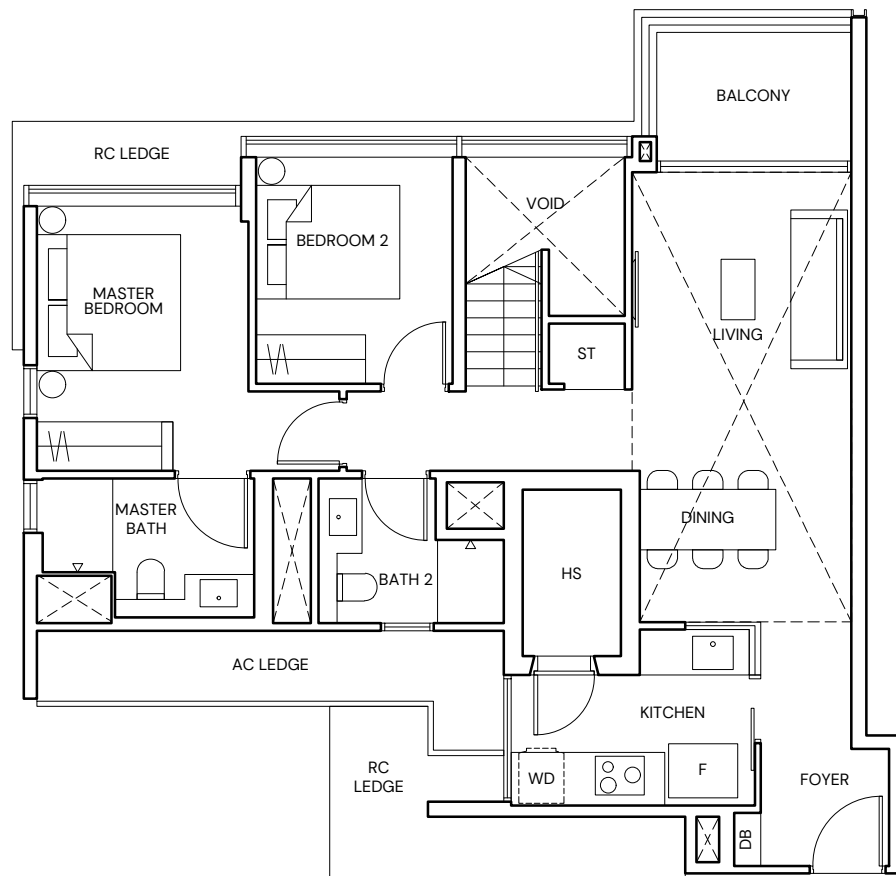
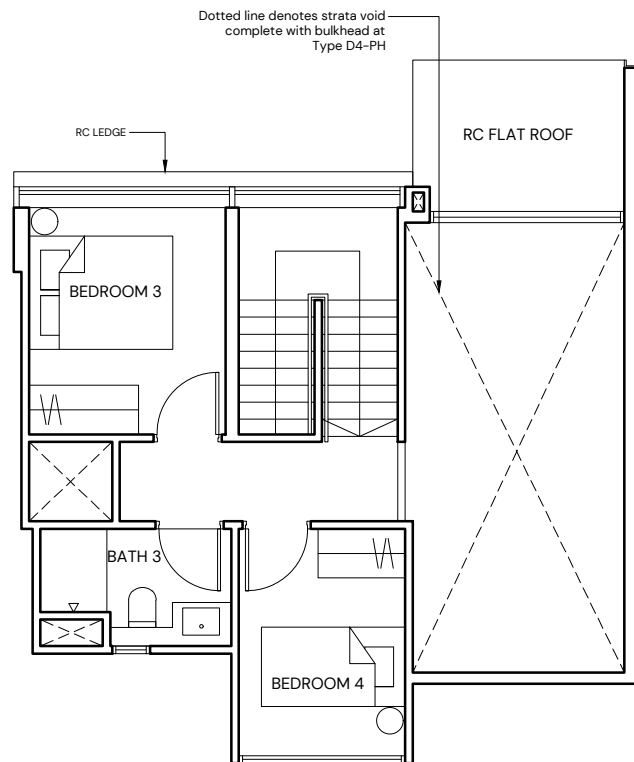
BLOCK 18A

#05-15

BLOCK 18B

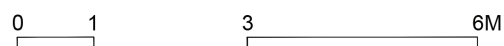
#05-18*

#05-23

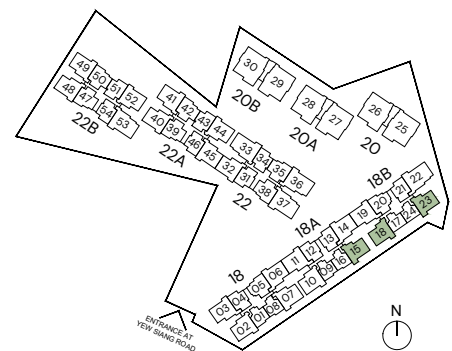


LEGEND

| | | | |
|----|--------------------|----|--|
| F | FRIDGE | AC | AIR-CONDITIONER |
| WD | WASHER DRYER COMBO | RC | REINFORCED CONCRETE (EXCLUDED FROM STRATA AREA) |
| HS | HOUSEHOLD SHELTER | >< | VOID SPACE (EXCLUDED FROM STRATA AREA) |
| DB | DISTRIBUTION BOARD | | |
| ST | STORE | | |
| * | MIRRORED UNIT | | |



ALL PLANS ARE SUBJECT TO CHANGES BY THE RELEVANT AUTHORITIES.
MEASUREMENTS ARE APPROXIMATE ONLY AND SUBJECT TO FINAL SURVEY.
INFORMATION ACCURATE AT POINT OF PRINTING.
BP NO.: A1716-00007-2021-BP01 DATED 23/12/2022



TYPE D5-PH

4 BEDROOM

170 SQM/ 1830 SQFT
(INCLUSIVE OF 28 SQM SRATA VOID)

BLOCK 18

#05-02

BLOCK 18A

#05-10

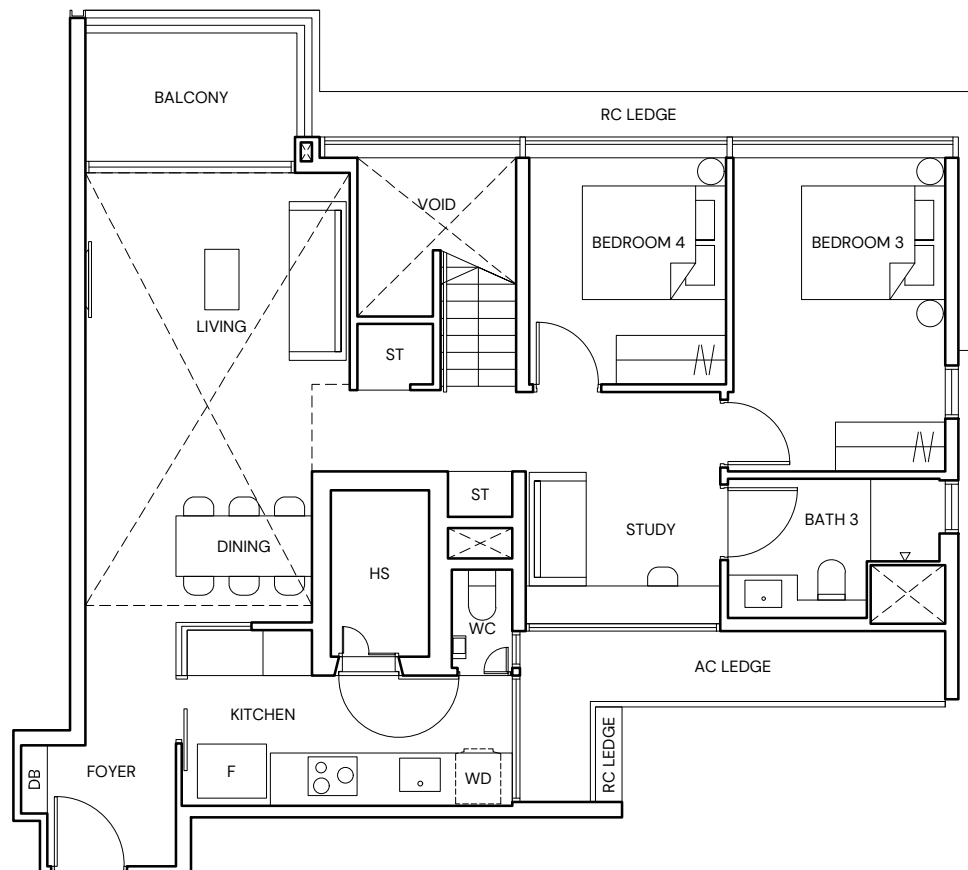
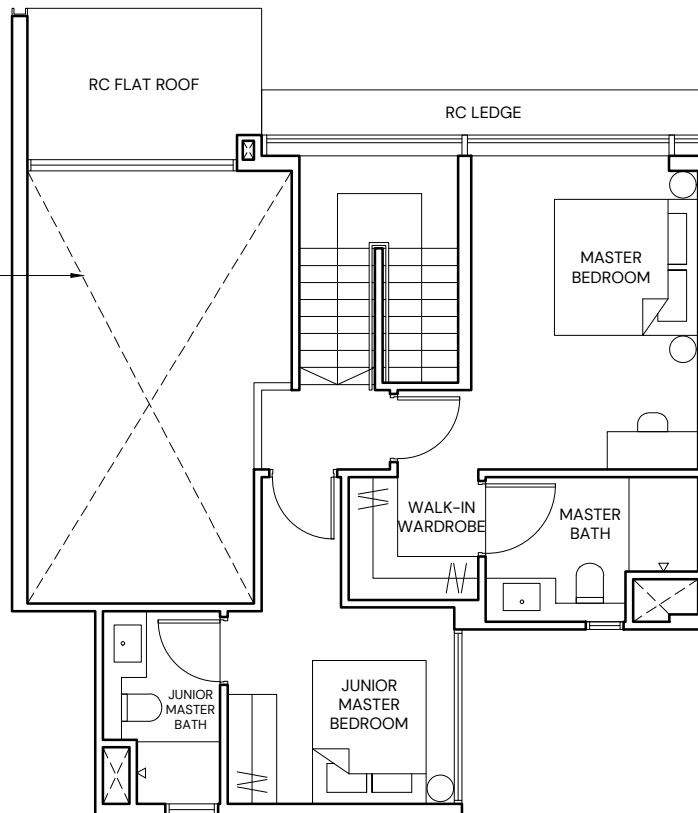
BLOCK 22A

#05-44

BLOCK 22B

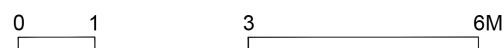
#05-52

Dotted line denotes strata void
complete with bulkhead at
Type D5-PH

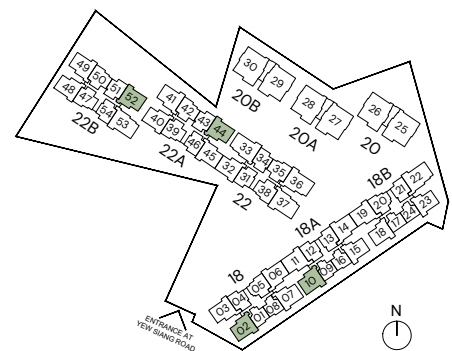


LEGEND

| | | | |
|----|--------------------|----|--|
| F | FRIDGE | AC | AIR-CONDITIONER |
| WD | WASHER DRYER COMBO | RC | REINFORCED CONCRETE (EXCLUDED FROM STRATA AREA) |
| HS | HOUSEHOLD SHELTER | >< | VOID SPACE (EXCLUDED FROM STRATA AREA) |
| DB | DISTRIBUTION BOARD | | |
| ST | STORE | | |
| WC | WATER CLOSET | | |



ALL PLANS ARE SUBJECT TO CHANGES BY THE RELEVANT AUTHORITIES.
MEASUREMENTS ARE APPROXIMATE ONLY AND SUBJECT TO FINAL SURVEY.
INFORMATION ACCURATE AT POINT OF PRINTING.
BP NO.: A1716-00007-2021-BP01 DATED 23/12/2022



TYPE D6-PH

4 BEDROOM

172 SQM/ 1851 SQFT
(INCLUSIVE OF 28 SQM STRATA VOID)

BLOCK 18

#05-07

BLOCK 22

#05-32*

BLOCK 22A

#05-40*

#05-41

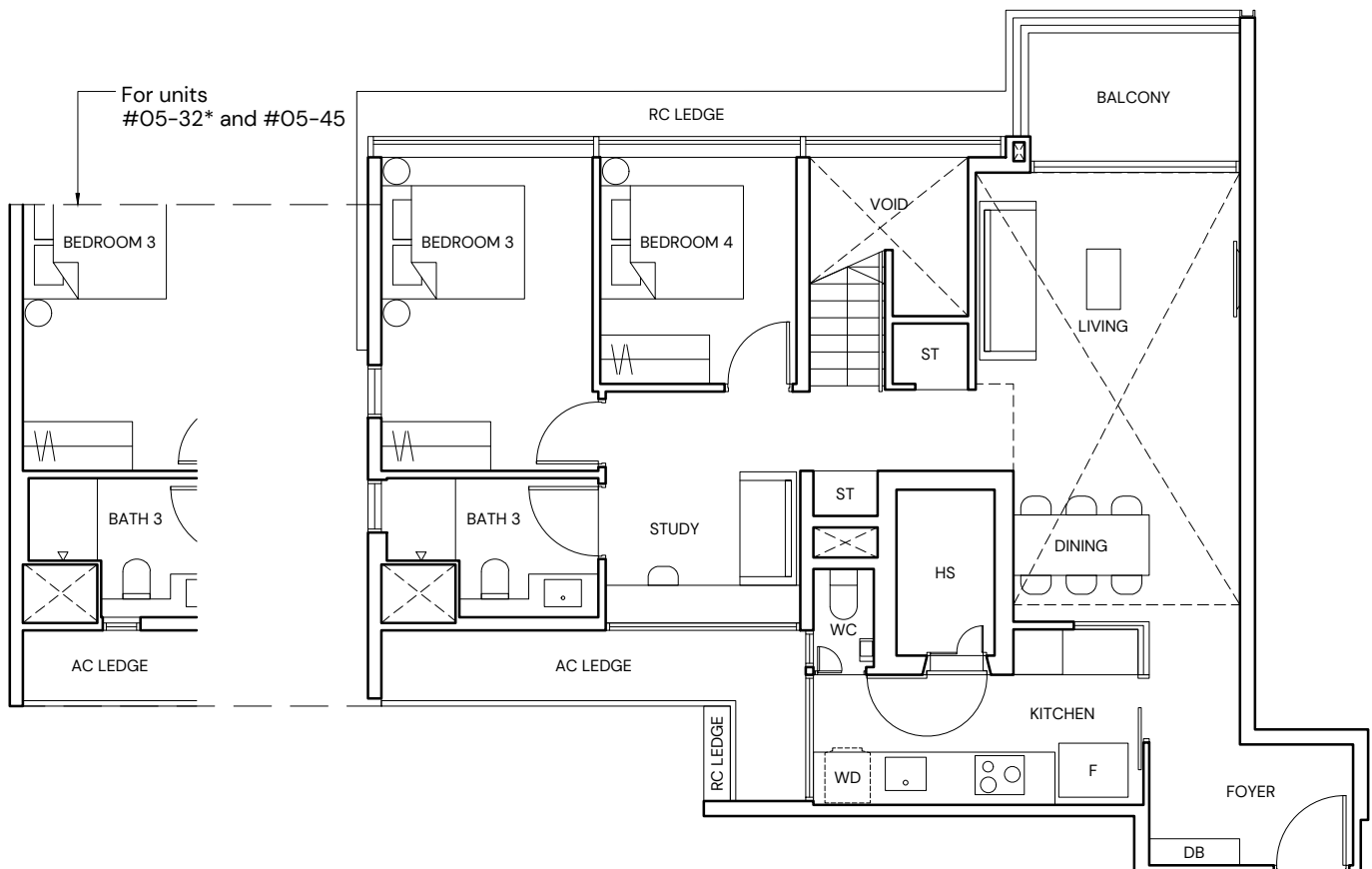
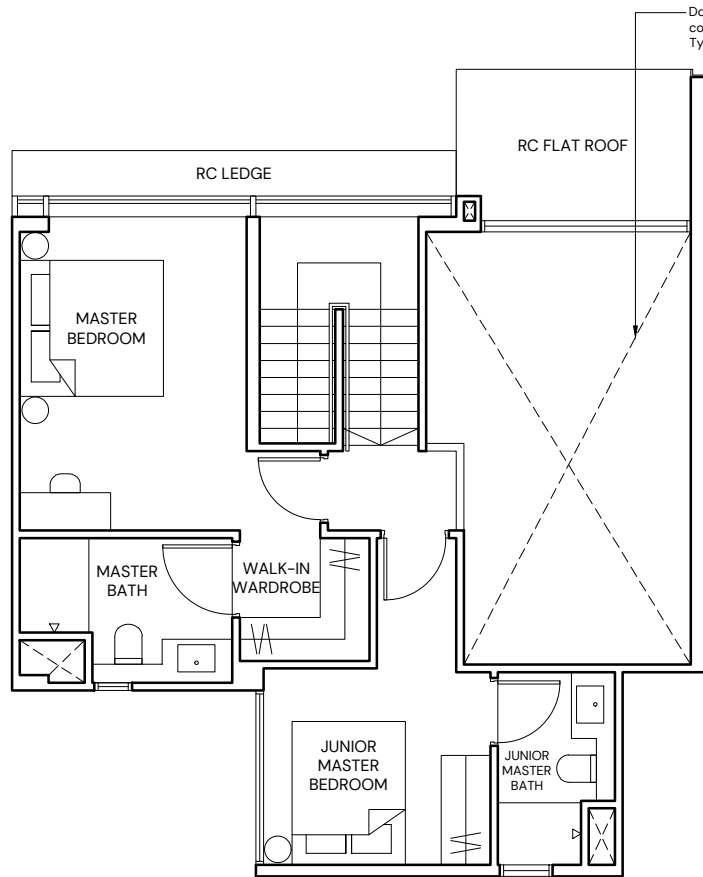
#05-45

BLOCK 22B

#05-48*

#05-49

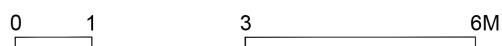
Dotted line denotes strata void complete with bulkhead at Type D6-PH



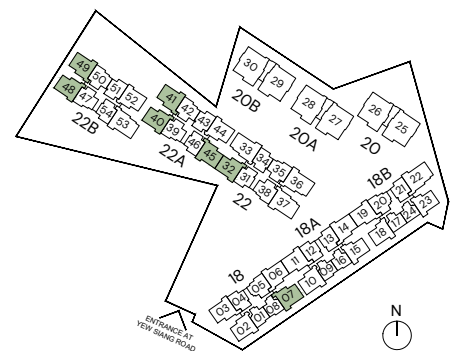
For units #05-32* and #05-45

LEGEND

| | | | |
|----|--------------------|-----|--|
| F | FRIDGE | AC | AIR-CONDITIONER |
| WD | WASHER DRYER COMBO | RC | REINFORCED CONCRETE (EXCLUDED FROM STRATA AREA) |
| HS | HOUSEHOLD SHELTER | [X] | VOID SPACE (EXCLUDED FROM STRATA AREA) |
| DB | DISTRIBUTION BOARD | | |
| ST | STORE | | |
| WC | WATER CLOSET | | |
| * | MIRRORED UNIT | | |



ALL PLANS ARE SUBJECT TO CHANGES BY THE RELEVANT AUTHORITIES.
MEASUREMENTS ARE APPROXIMATE ONLY AND SUBJECT TO FINAL SURVEY.
INFORMATION ACCURATE AT POINT OF PRINTING.
BP NO.: A1716-00007-2021-BP01 DATED 23/12/2022



TYPE D7-PH

4 BEDROOM

173 SQM/ 1862 SQFT
(INCLUSIVE OF 28 SQM STRATA VOID)

BLOCK 18

#05-03
#05-06*

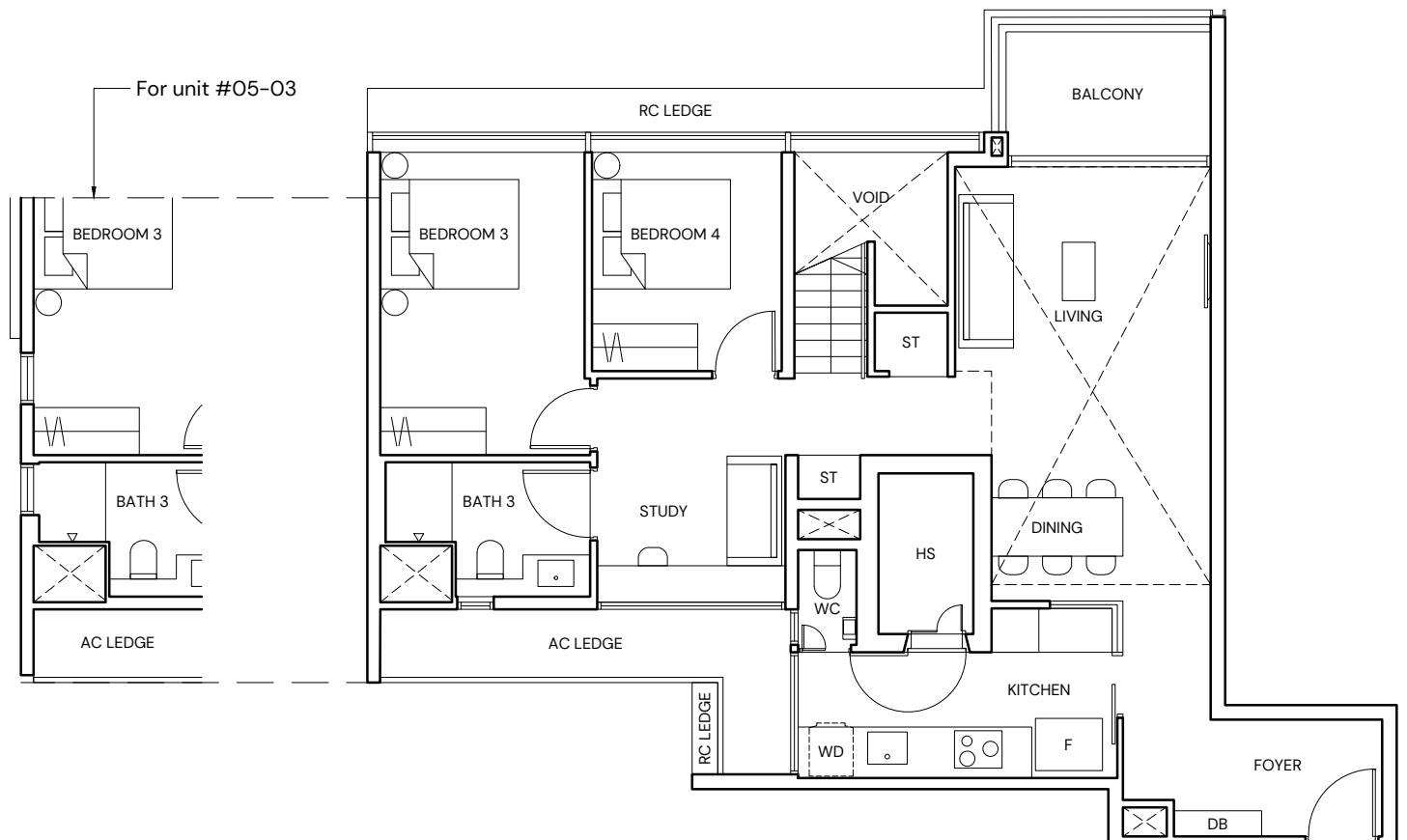
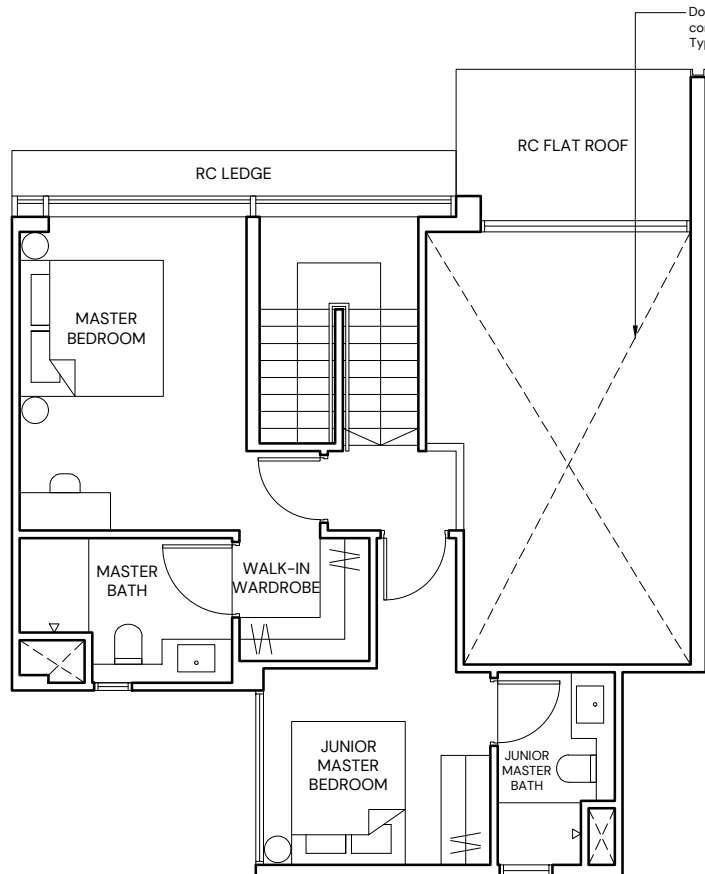
BLOCK 18A

#05-11
#05-14*

BLOCK 18B

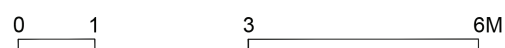
#05-19

Dotted line denotes strata void complete with bulkhead at Type D7-PH

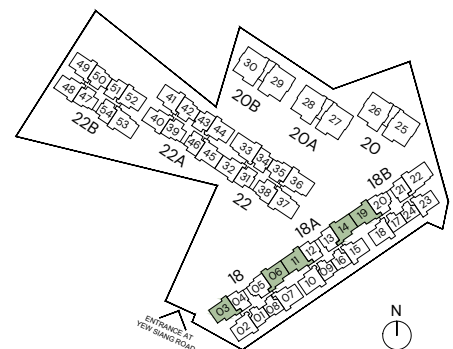


LEGEND

| | | | |
|----|--------------------|----|--|
| F | FRIDGE | AC | AIR-CONDITIONER |
| WD | WASHER DRYER COMBO | RC | REINFORCED CONCRETE (EXCLUDED FROM STRATA AREA) |
| HS | HOUSEHOLD SHELTER | ∅ | VOID SPACE (EXCLUDED FROM STRATA AREA) |
| DB | DISTRIBUTION BOARD | ⊠ | |
| ST | STORE | | |
| WC | WATER CLOSET | | |
| * | MIRRORED UNIT | | |



ALL PLANS ARE SUBJECT TO CHANGES BY THE RELEVANT AUTHORITIES.
MEASUREMENTS ARE APPROXIMATE ONLY AND SUBJECT TO FINAL SURVEY.
INFORMATION ACCURATE AT POINT OF PRINTING.
BP NO.: A1716-00007-2021-BP01 DATED 23/12/2022



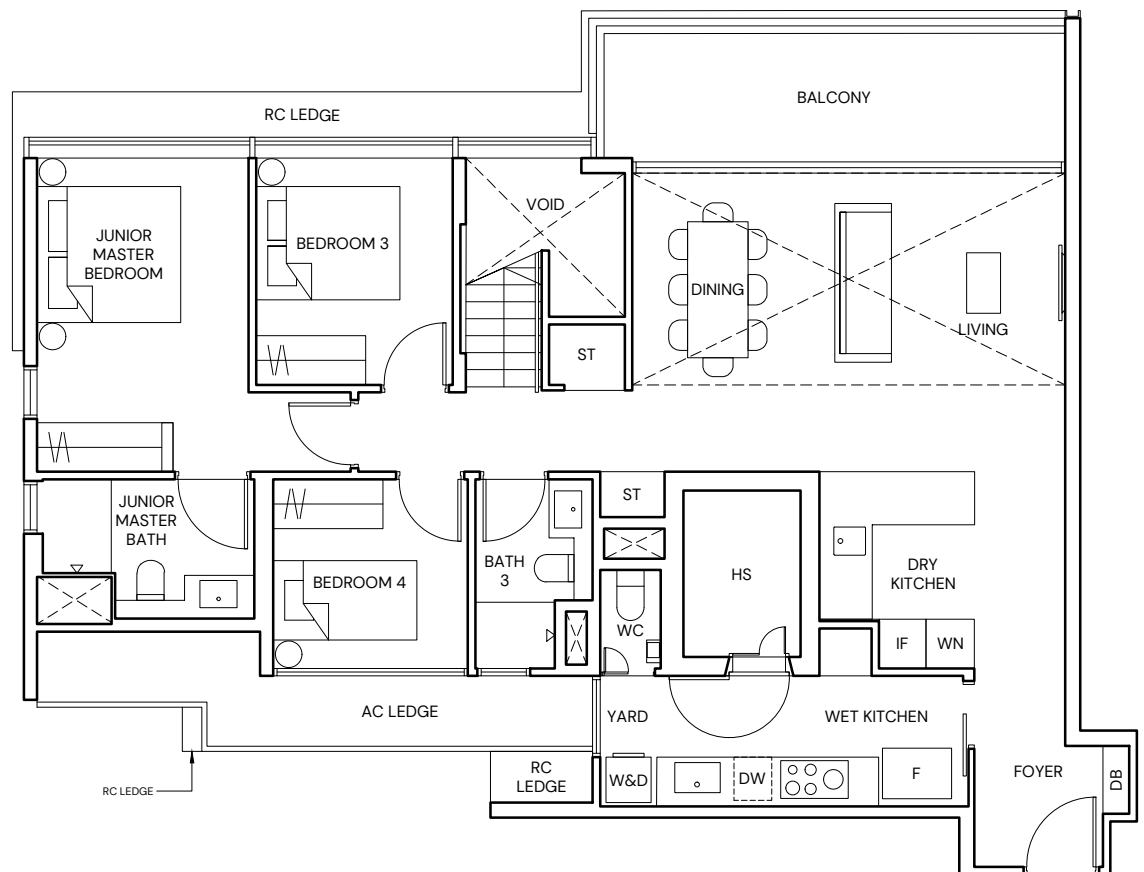
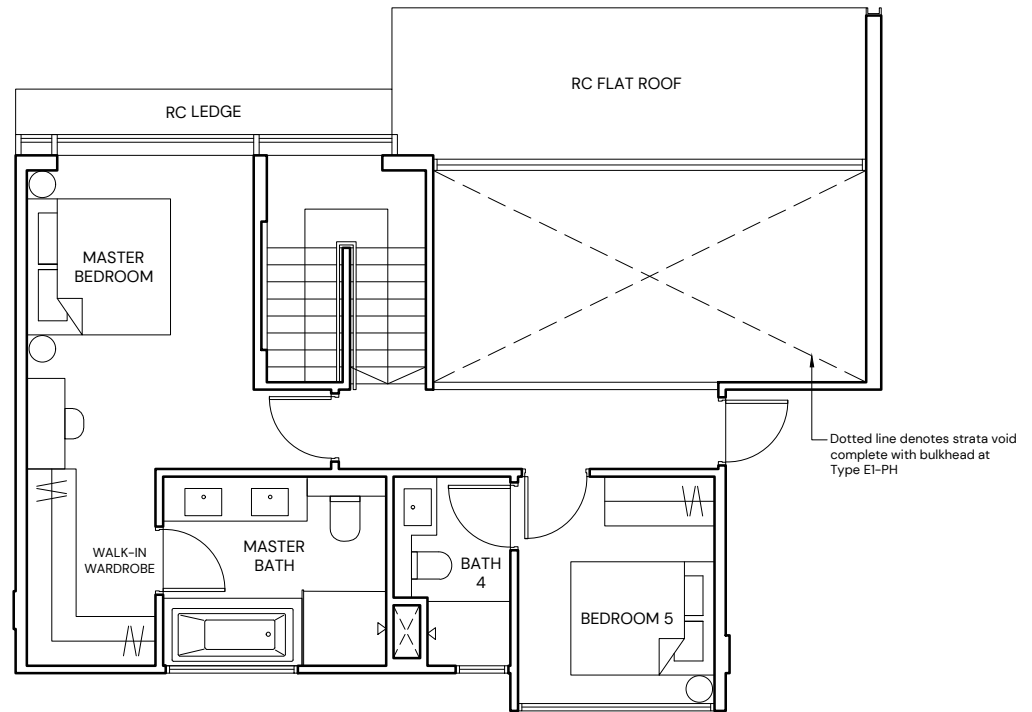
TYPE E1-PH

5 BEDROOM

197 SQM/ 2120 SQFT
(INCLUSIVE OF 25 SQM STRATA VOID)

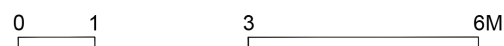
BLOCK 22

#05-33

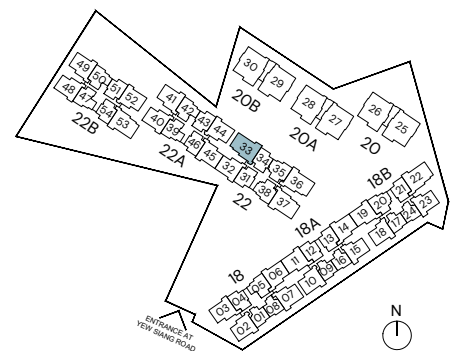


LEGEND

| | | | |
|-----|--------------------|----|--|
| F | FRIDGE | AC | AIR-CONDITIONER |
| IF | INTEGRATED FRIDGE | RC | REINFORCED CONCRETE (EXCLUDED FROM STRATA AREA) |
| DW | DISHWASHER | | VOID SPACE (EXCLUDED FROM STRATA AREA) |
| WN | WINE CHILLER | | |
| W&D | WASHER AND DRYER | | |
| HS | HOUSEHOLD SHELTER | | |
| DB | DISTRIBUTION BOARD | | |
| ST | STORE | | |
| WC | WATER CLOSET | | |



ALL PLANS ARE SUBJECT TO CHANGES BY THE RELEVANT AUTHORITIES.
MEASUREMENTS ARE APPROXIMATE ONLY AND SUBJECT TO FINAL SURVEY.
INFORMATION ACCURATE AT POINT OF PRINTING.
BP NO.: A1716-00007-2021-BP01 DATED 23/12/2022



TYPE E2-PH

5 BEDROOM

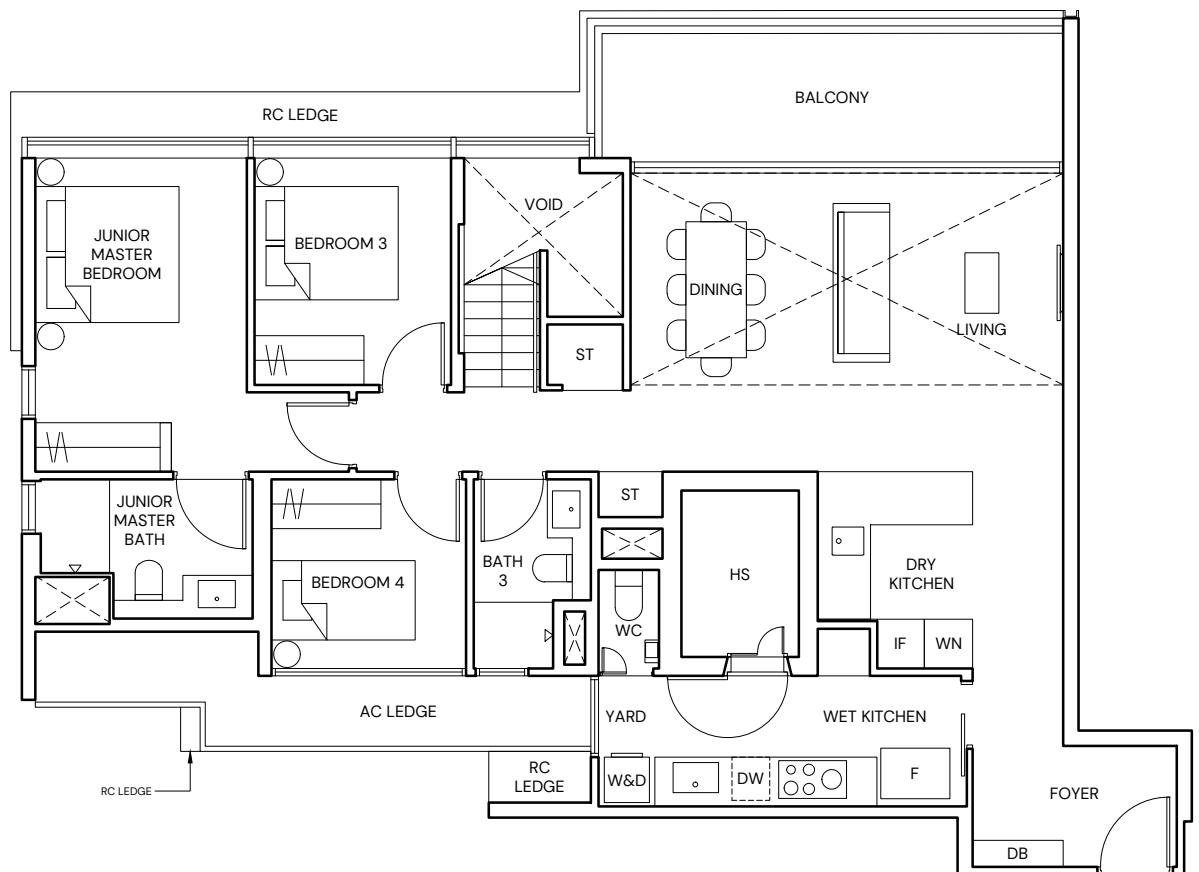
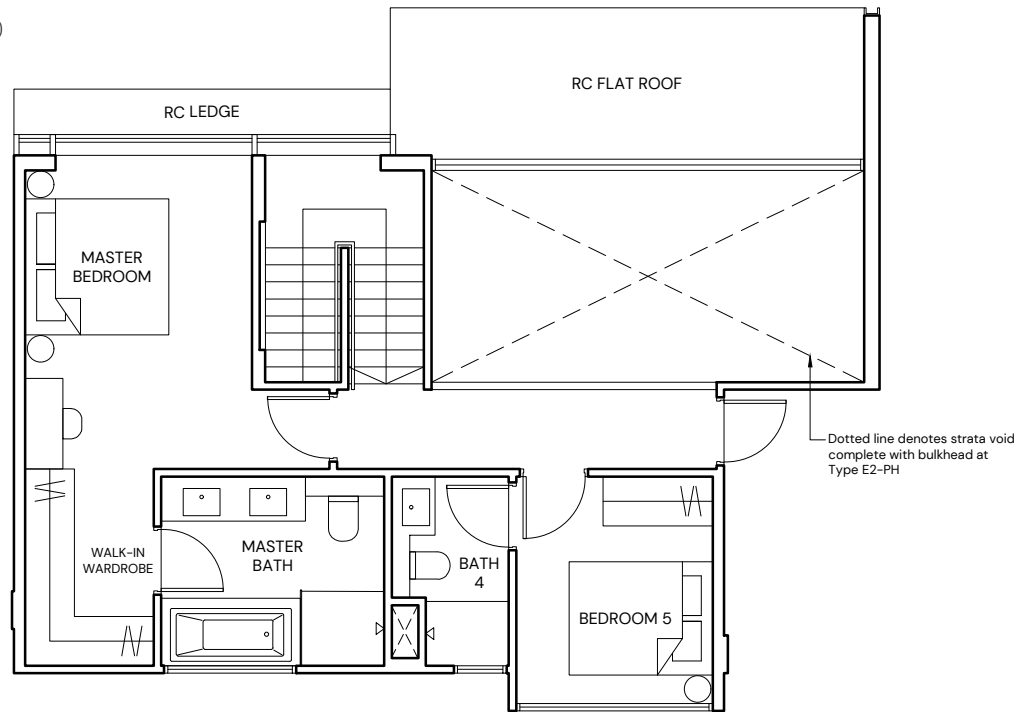
199 SQM/ 2142 SQFT
(INCLUSIVE OF 25 SQM STRATA VOID)

BLOCK 22

#05-36*
#05-37

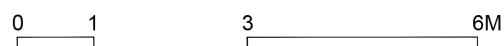
BLOCK 22B

#05-53

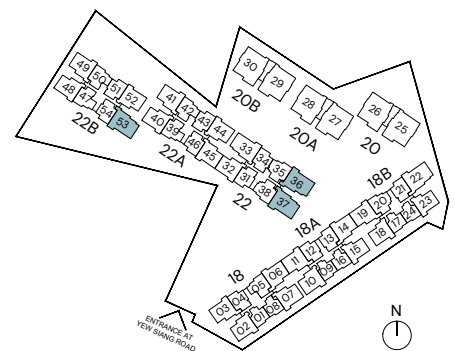


LEGEND

| | | | |
|-----|--------------------|----|--|
| F | FRIDGE | AC | AIR-CONDITIONER |
| IF | INTEGRATED FRIDGE | RC | REINFORCED CONCRETE (EXCLUDED FROM STRATA AREA) |
| DW | DISHWASHER | | VOID SPACE (EXCLUDED FROM STRATA AREA) |
| WN | WINE CHILLER | | |
| W&D | WASHER AND DRYER | | |
| HS | HOUSEHOLD SHELTER | | |
| DB | DISTRIBUTION BOARD | | |
| WC | WATER CLOSET | | |
| * | MIRRORED UNIT | | |



ALL PLANS ARE SUBJECT TO CHANGES BY THE RELEVANT AUTHORITIES.
MEASUREMENTS ARE APPROXIMATE ONLY AND SUBJECT TO FINAL SURVEY.
INFORMATION ACCURATE AT POINT OF PRINTING.
BP NO.: A1716-00007-2021-BP01 DATED 23/12/2022



TYPE E3-PH

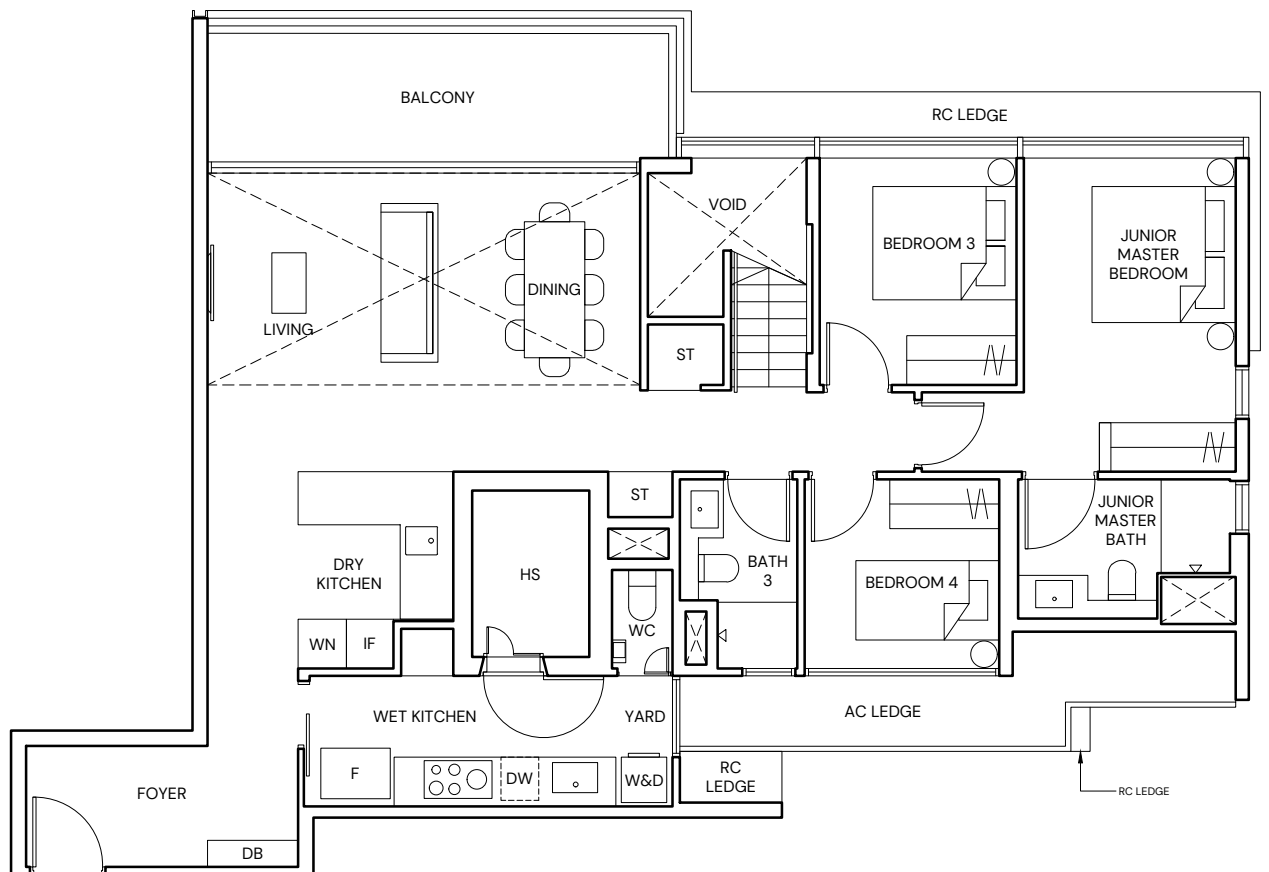
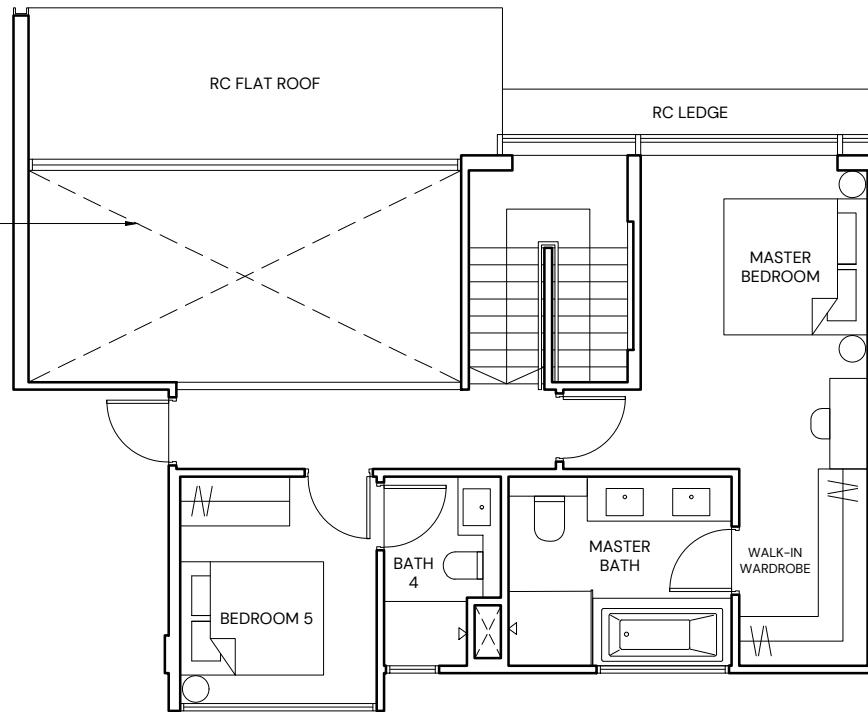
5 BEDROOM

201 SQM/ 2164 SQFT
(INCLUSIVE OF 25 SQM STRATA VOID)

BLOCK 18B

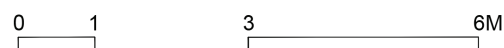
#05-22

Dotted line denotes strata void complete with bulkhead at Type E3-PH

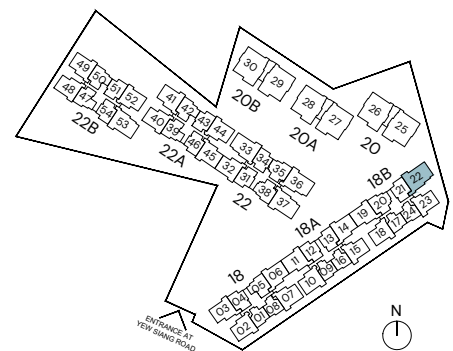


LEGEND

| | | | |
|-----|--------------------|----|--|
| F | FRIDGE | AC | AIR-CONDITIONER |
| IF | INTEGRATED FRIDGE | RC | REINFORCED CONCRETE (EXCLUDED FROM STRATA AREA) |
| DW | DISHWASHER | | VOID SPACE (EXCLUDED FROM STRATA AREA) |
| WN | WINE CHILLER | | |
| W&D | WASHER AND DRYER | | |
| HS | HOUSEHOLD SHELTER | | |
| DB | DISTRIBUTION BOARD | | |
| ST | STORE | | |
| WC | WATER CLOSET | | |



ALL PLANS ARE SUBJECT TO CHANGES BY THE RELEVANT AUTHORITIES.
MEASUREMENTS ARE APPROXIMATE ONLY AND SUBJECT TO FINAL SURVEY.
INFORMATION ACCURATE AT POINT OF PRINTING.
BP NO.: A1716-00007-2021-BP01 DATED 23/12/2022



TYPE DP1

4 BEDROOM

176 SQM/ 1894 SQFT

BLOCK 20

#01-25* TO #04-25*

#01-26 TO #04-26

BLOCK 20A

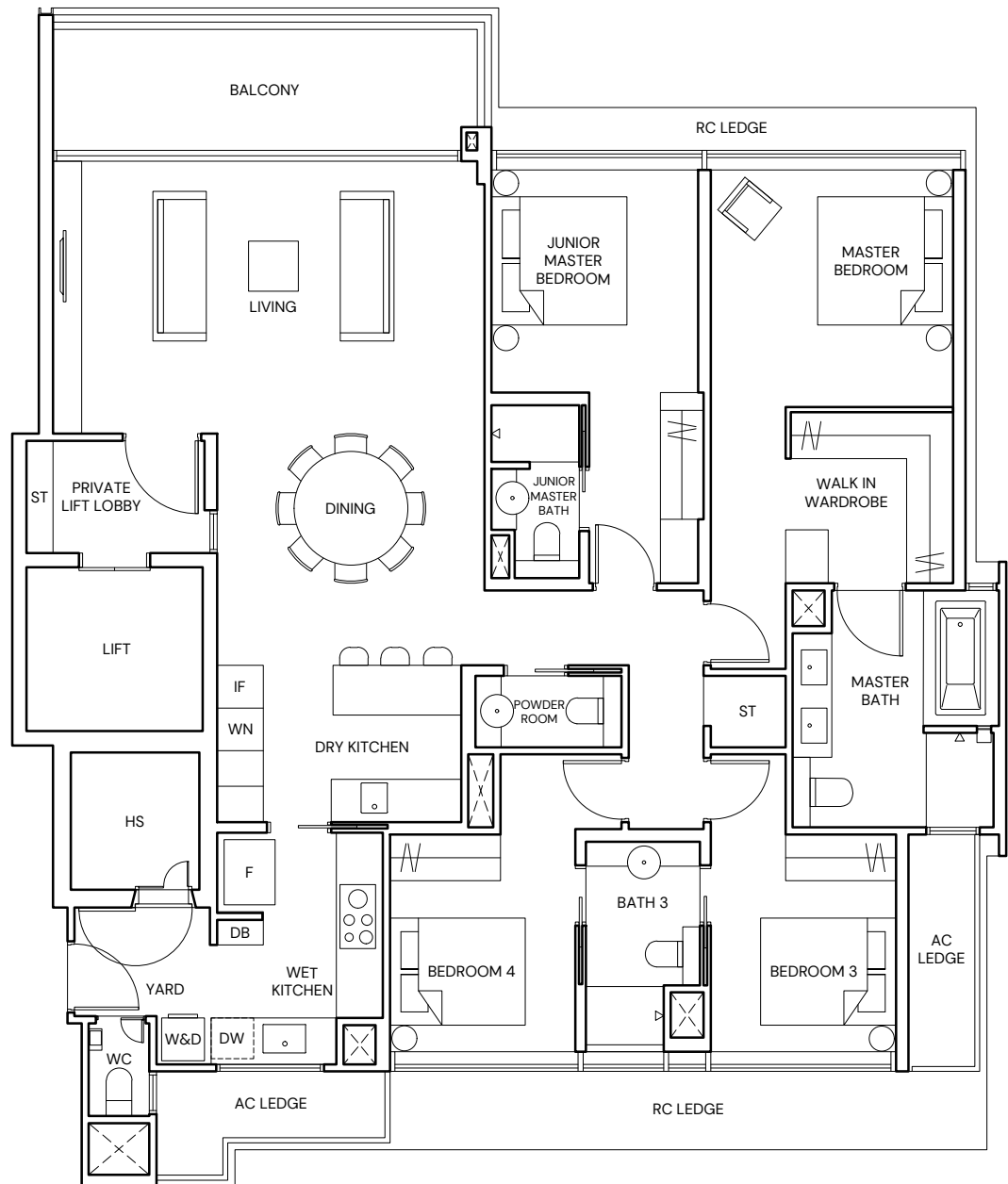
#01-27* TO #04-27*

#01-28 TO #04-28

BLOCK 20B

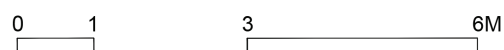
#01-29* TO #04-29*

#01-30 TO #04-30



LEGEND

| | | | |
|-----|--------------------|----|--|
| F | FRIDGE | AC | AIR-CONDITIONER |
| IF | INTEGRATED FRIDGE | RC | REINFORCED CONCRETE (EXCLUDED FROM STRATA AREA) |
| DW | DISHWASHER | | VOID SPACE (EXCLUDED FROM STRATA AREA) |
| WN | WINE CHILLER | | |
| W&D | WASHER AND DRYER | | |
| HS | HOUSEHOLD SHELTER | | |
| DB | DISTRIBUTION BOARD | | |
| ST | STORE | | |
| WC | WATER CLOSET | | |
| * | MIRRORED UNIT | | |



ALL PLANS ARE SUBJECT TO CHANGES BY THE RELEVANT AUTHORITIES.
MEASUREMENTS ARE APPROXIMATE ONLY AND SUBJECT TO FINAL SURVEY.
INFORMATION ACCURATE AT POINT OF PRINTING.
BP NO.: A1716-00007-2021-BP01 DATED 23/12/2022

