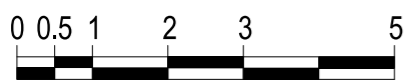


2-BEDROOM + STUDY

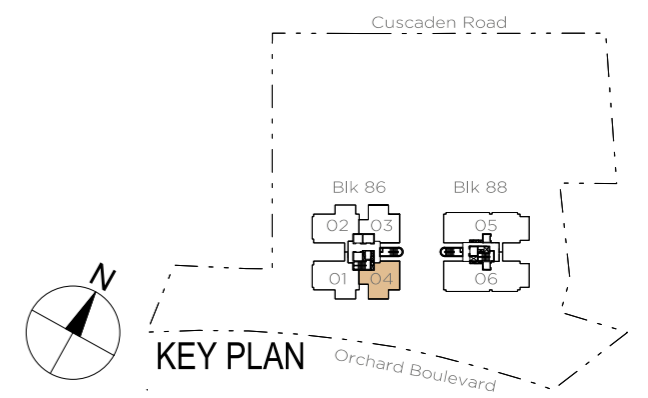
TYPE A1

122 SQM / 1313 SQ FT

*#03-04, #05-04, #07-04,
#09-04, #11-04, #13-04,
#15-04, #17-04, #19-04,
#21-04, #23-04, #25-04,
#27-04



Area includes air-con (A/C) ledge, balcony, bay window and planter where applicable. Some units are mirror images of the apartment plans shown in the brochure. Please refer to the key plan for orientation. The plans are subject to change as may be approved by relevant authorities. All floor plans are approximate measurements only and are subject to government re-survey. The balcony shall not be enclosed unless with the approved balcony screen. For an illustration of the approved balcony screen, please refer to the diagram annexed hereto as "Annexure".



2-BEDROOM + STUDY

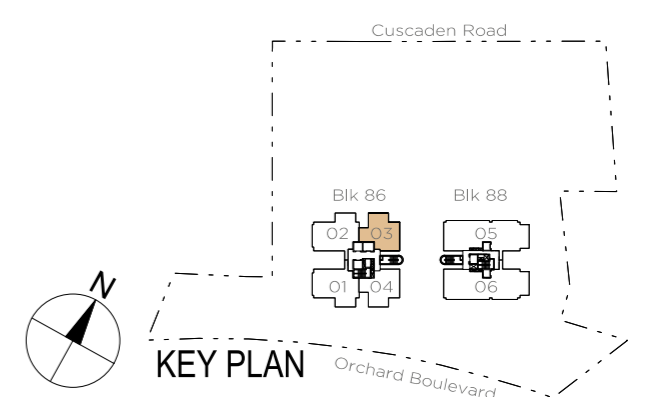
TYPE A1*

122 SQM / 1313 SQ FT

*#03-03, #05-03, #07-03,
#09-03, #11-03, #13-03,
#15-03, #17-03, #19-03,
#21-03, #23-03, #25-03,
#27-03



Area includes air-con (A/C) ledge, balcony, bay window and planter where applicable. Some units are mirror images of the apartment plans shown in the brochure. Please refer to the key plan for orientation. The plans are subject to change as may be approved by relevant authorities. All floor plans are approximate measurements only and are subject to government re-survey. The balcony shall not be enclosed unless with the approved balcony screen. For an illustration of the approved balcony screen, please refer to the diagram annexed hereto as "Annexure". * Denotes mirror image units.

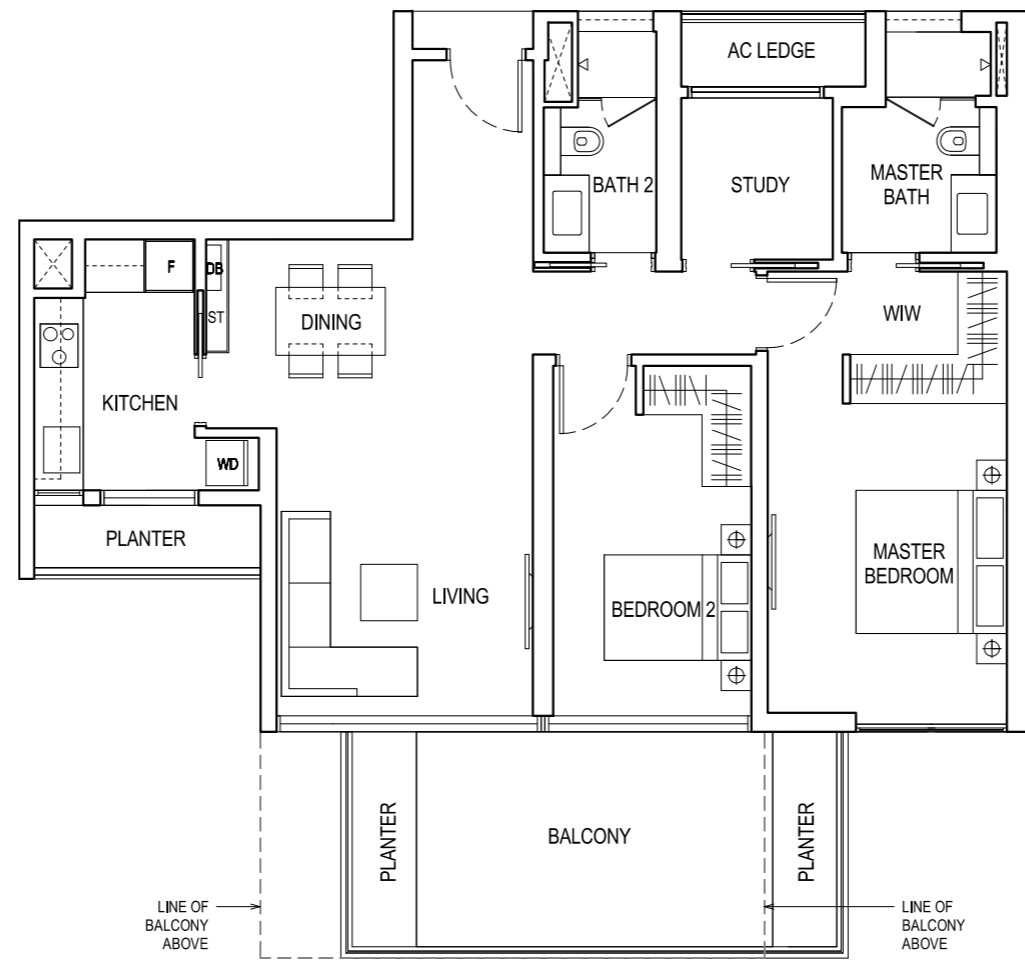


2-BEDROOM + STUDY

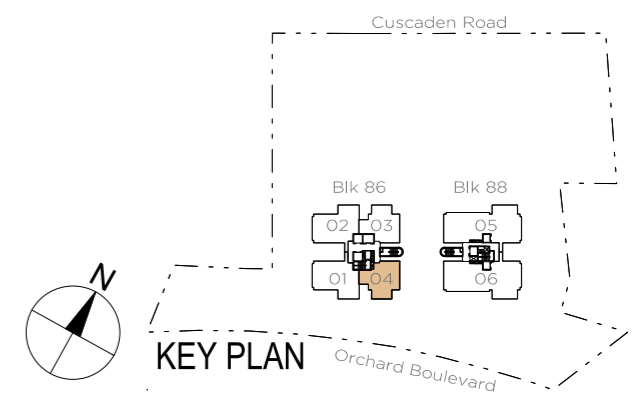
TYPE A2

122 SQM / 1313 SQ FT

#04-04, #06-04, #08-04,
#10-04, #12-04, #14-04,
#16-04, #18-04, #20-04,
#22-04, #24-04, #26-04



Area includes air-con (A/C) ledge, balcony, bay window and planter where applicable. Some units are mirror images of the apartment plans shown in the brochure. Please refer to the key plan for orientation. The plans are subject to change as may be approved by relevant authorities. All floor plans are approximate measurements only and are subject to government re-survey. The balcony shall not be enclosed unless with the approved balcony screen. For an illustration of the approved balcony screen, please refer to the diagram annexed hereto as "Annexure".

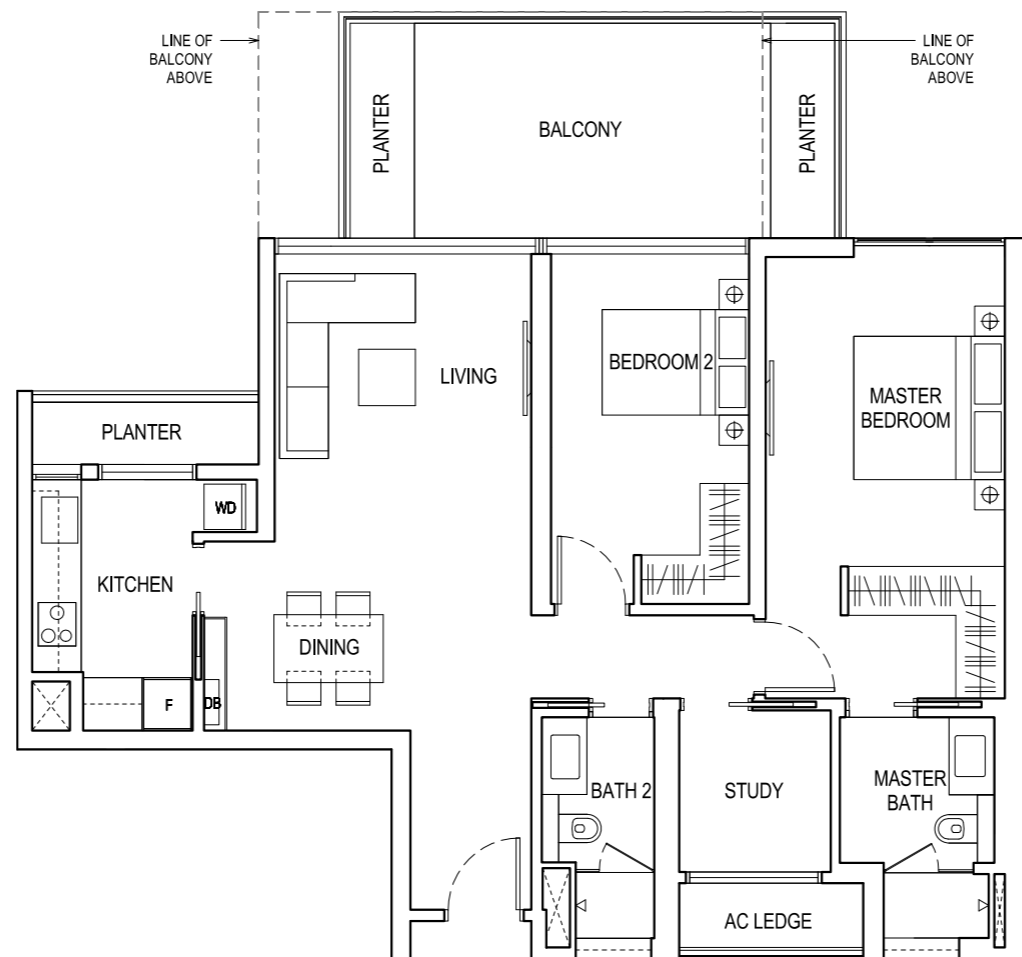


2-BEDROOM + STUDY

TYPE A2*

122 SQM / 1313 SQ FT

#04-03, #06-03, #08-03,
#10-03, #12-03, #14-03,
#16-03, #18-03, #20-03,
#22-03, #24-03, #26-03



Area includes air-con (A/C) ledge, balcony, bay window and planter where applicable. Some units are mirror images of the apartment plans shown in the brochure. Please refer to the key plan for orientation. The plans are subject to change as may be approved by relevant authorities. All floor plans are approximate measurements only and are subject to government re-survey. The balcony shall not be enclosed unless with the approved balcony screen. For an illustration of the approved balcony screen, please refer to the diagram annexed hereto as "Annexure". * Denotes mirror image units.

