

3-BEDROOM

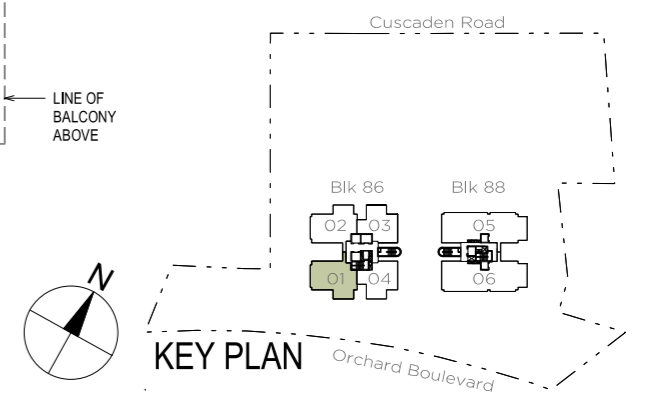
TYPE B1

165 SQM / 1776 SQ FT

#03-01, #05-01, #07-01,
#09-01, #11-01, #13-01



Area includes air-con (A/C) ledge, balcony, bay window and planter where applicable. Some units are mirror images of the apartment plans shown in the brochure. Please refer to the key plan for orientation. The plans are subject to change as may be approved by relevant authorities. All floor plans are approximate measurements only and are subject to government re-survey. The balcony shall not be enclosed unless with the approved balcony screen. For an illustration of the approved balcony screen, please refer to the diagram annexed hereto as "Annexure".



3-BEDROOM

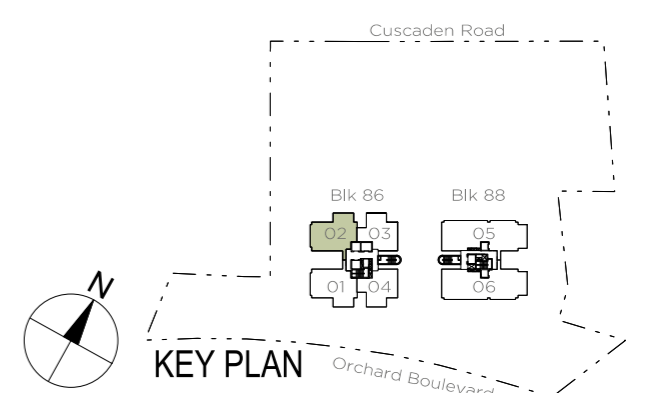
TYPE B1*

165 SQM / 1776 SQ FT

#03-02, #05-02, #07-02,
#09-02, #11-02, #13-02,
#15-02, #17-02, #19-02,
#21-02, #23-02, #25-02,
#27-02



Area includes air-con (A/C) ledge, balcony, bay window and planter where applicable. Some units are mirror images of the apartment plans shown in the brochure. Please refer to the key plan for orientation. The plans are subject to change as may be approved by relevant authorities. All floor plans are approximate measurements only and are subject to government re-survey. The balcony shall not be enclosed unless with the approved balcony screen. For an illustration of the approved balcony screen, please refer to the diagram annexed hereto as "Annexure". * Denotes mirror image units.

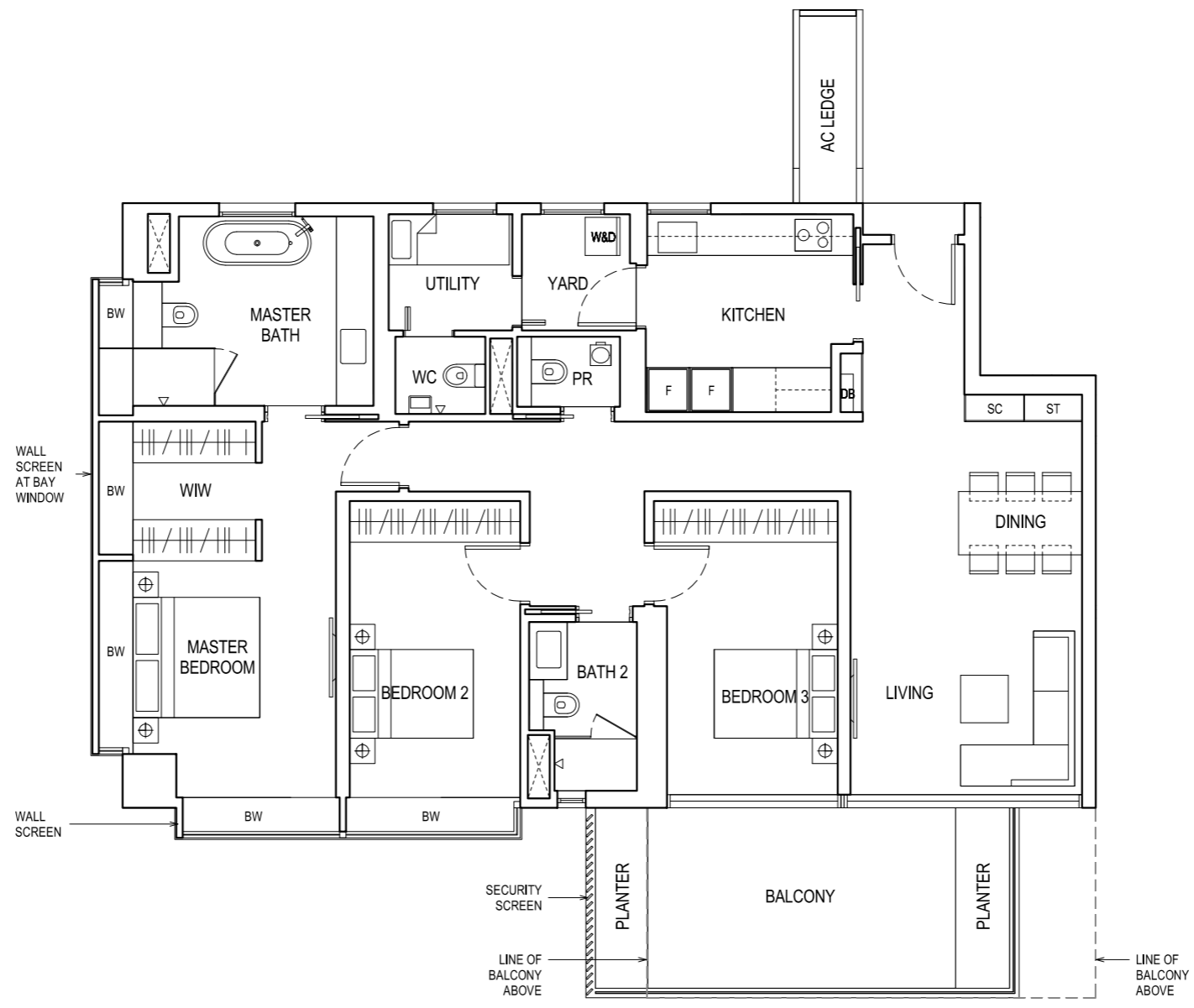


3-BEDROOM

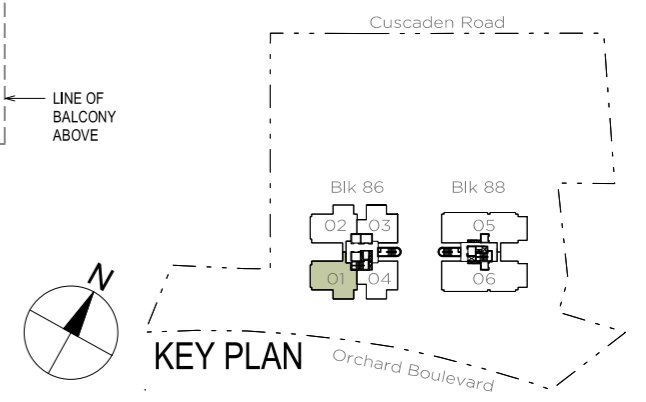
TYPE B1a

165 SQM / 1776 SQ FT

#15-01, #17-01, #19-01,
#21-01, #23-01, #25-01,
#27-01



Area includes air-con (A/C) ledge, balcony, bay window and planter where applicable. Some units are mirror images of the apartment plans shown in the brochure. Please refer to the key plan for orientation. The plans are subject to change as may be approved by relevant authorities. All floor plans are approximate measurements only and are subject to government re-survey. The balcony shall not be enclosed unless with the approved balcony screen. For an illustration of the approved balcony screen, please refer to the diagram annexed hereto as "Annexure".

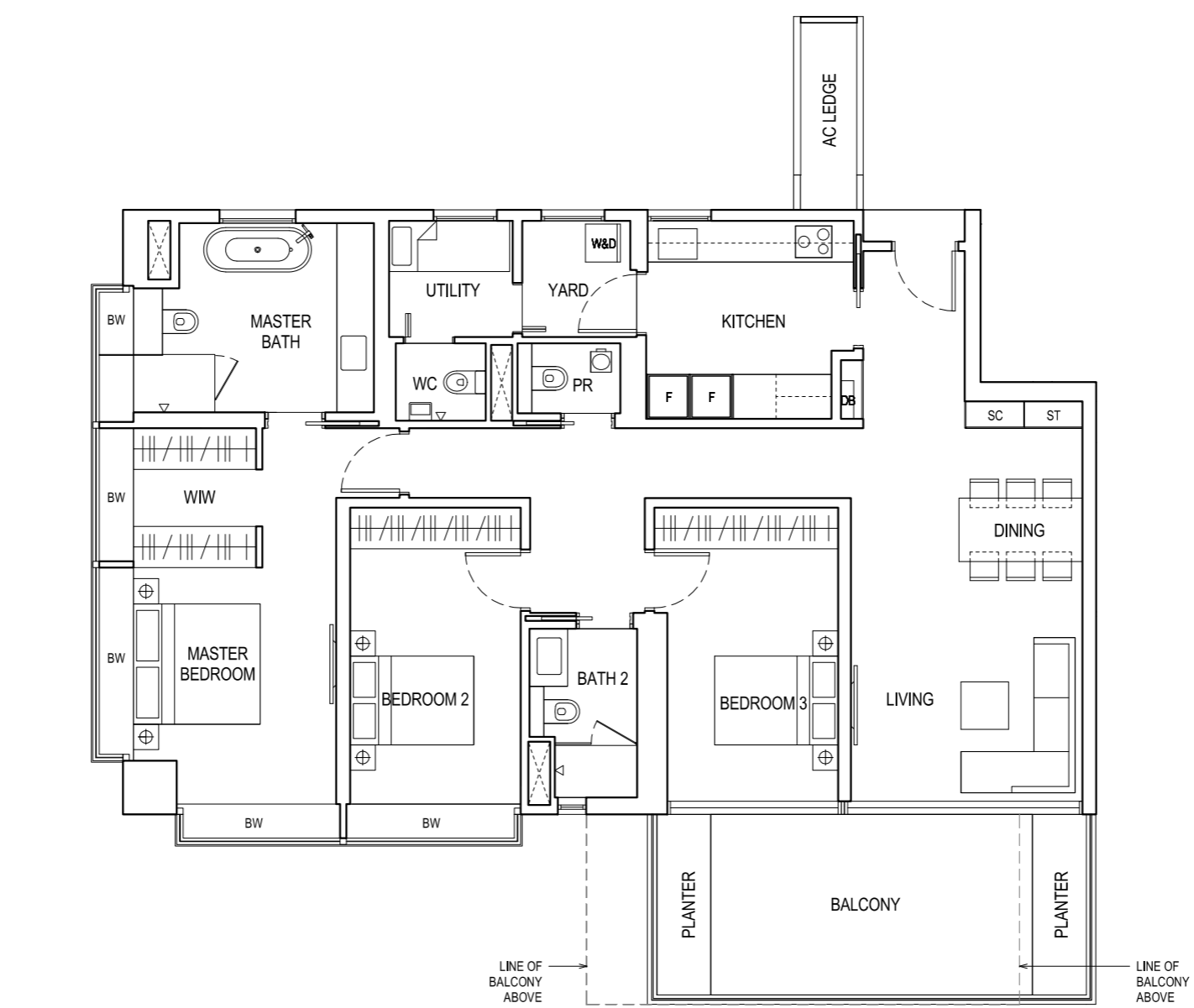


3-BEDROOM

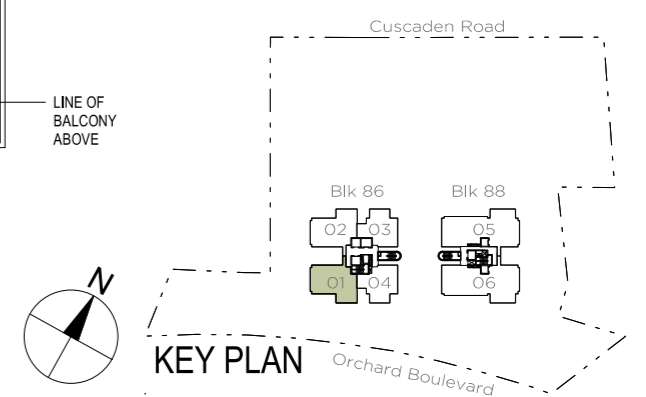
TYPE B2

165 SQM / 1776 SQ FT

#04-01, #06-01, #08-01,
#10-01, #12-01, #14-01



Area includes air-con (A/C) ledge, balcony, bay window and planter where applicable. Some units are mirror images of the apartment plans shown in the brochure. Please refer to the key plan for orientation. The plans are subject to change as may be approved by relevant authorities. All floor plans are approximate measurements only and are subject to government re-survey. The balcony shall not be enclosed unless with the approved balcony screen. For an illustration of the approved balcony screen, please refer to the diagram annexed hereto as "Annexure".



3-BEDROOM

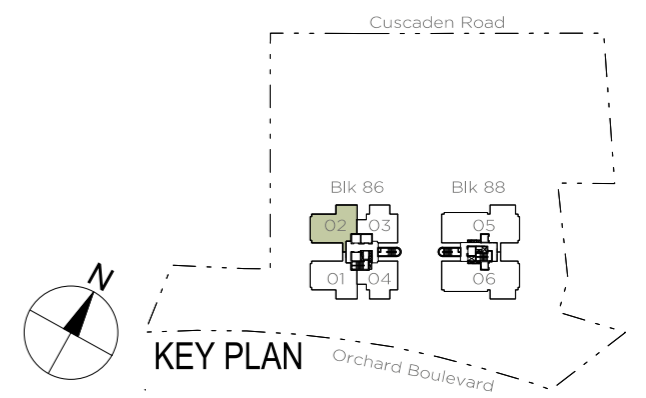
TYPE B2*

165 SQM / 1776 SQ FT

#04-02, #06-02, #08-02,
#10-02, #12-02, #14-02,
#16-02, #18-02, #20-02,
#22-02, #24-02, #26-02



Area includes air-con (A/C) ledge, balcony, bay window and planter where applicable. Some units are mirror images of the apartment plans shown in the brochure. Please refer to the key plan for orientation. The plans are subject to change as may be approved by relevant authorities. All floor plans are approximate measurements only and are subject to government re-survey. The balcony shall not be enclosed unless with the approved balcony screen. For an illustration of the approved balcony screen, please refer to the diagram annexed hereto as "Annexure". * Denotes mirror image units.

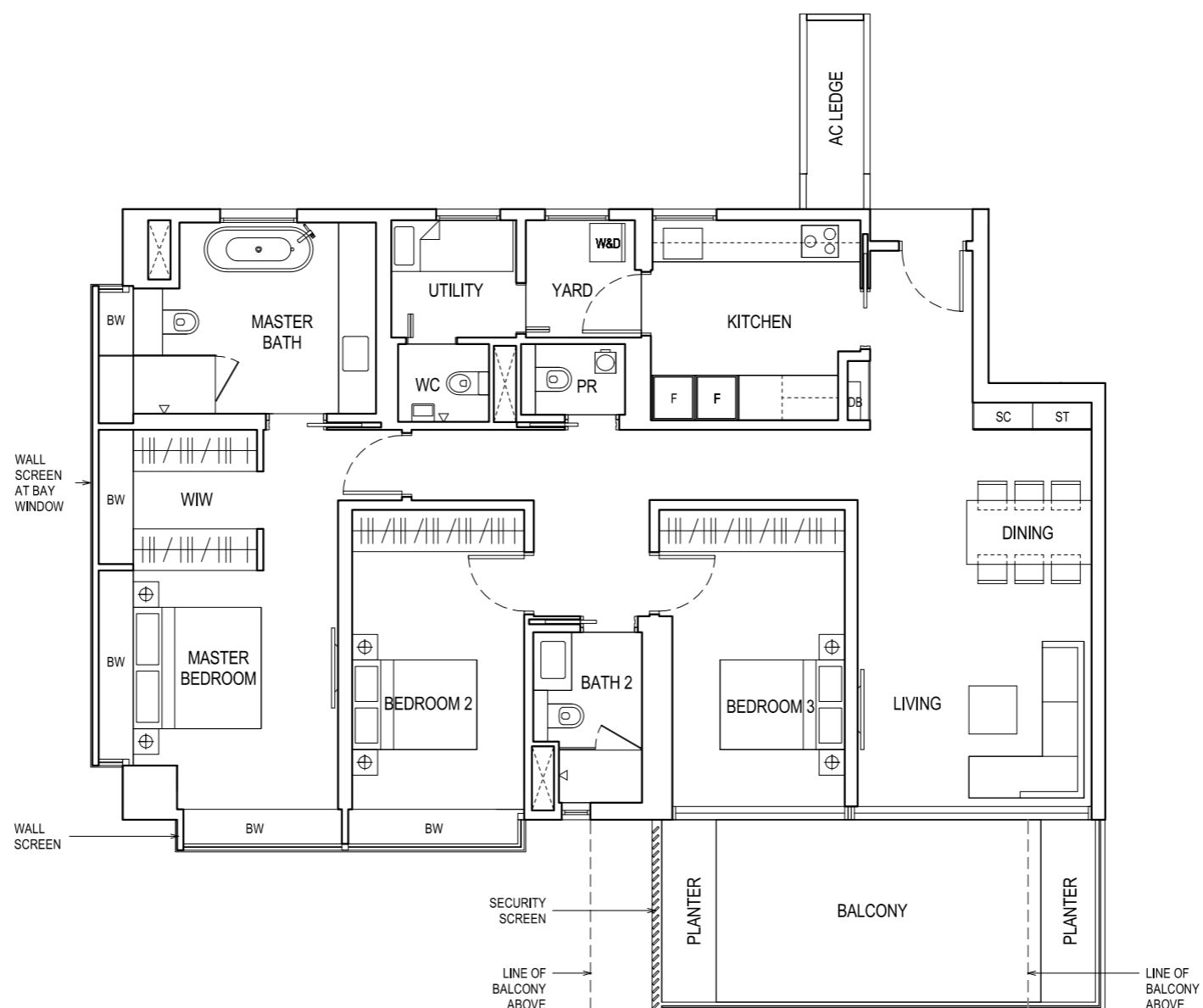


3-BEDROOM

TYPE B2a

165 SQM / 1776 SQ FT

#16-01, #18-01, #20-01,
#22-01, #24-01, #26-01



Area includes air-con (A/C) ledge, balcony, bay window and planter where applicable. Some units are mirror images of the apartment plans shown in the brochure. Please refer to the key plan for orientation. The plans are subject to change as may be approved by relevant authorities. All floor plans are approximate measurements only and are subject to government re-survey. The balcony shall not be enclosed unless with the approved balcony screen. For an illustration of the approved balcony screen, please refer to the diagram annexed hereto as "Annexure".

