

# 1-Bedroom

## TYPE A1

43 sq m / 463 sq ft

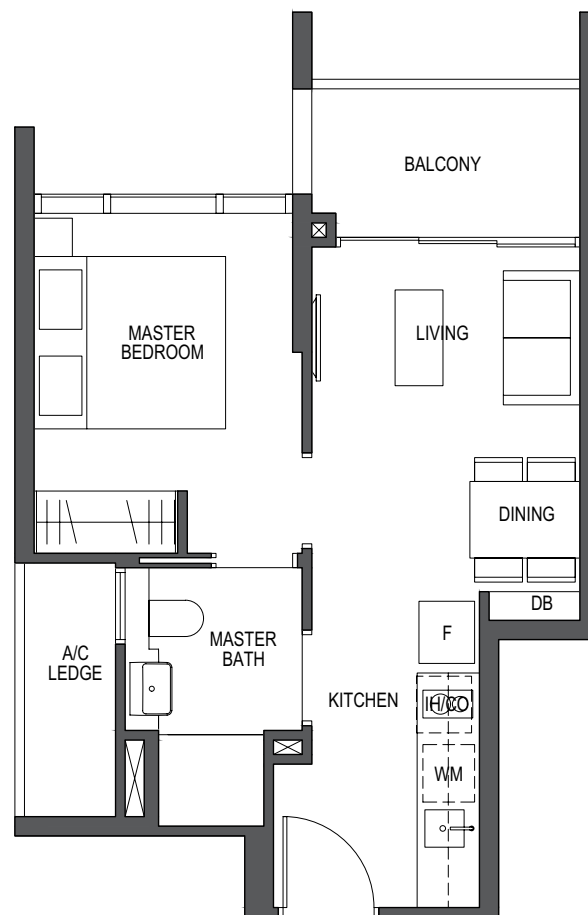
#02-06 to #29-06

#06-12 to #29-12

\*#02-05 to #29-05

\*#06-11 to #29-11

\*Mirror image



### LEGEND:

F - Fridge

D - Dryer

IH - Induction Hob

DW - Dishwasher

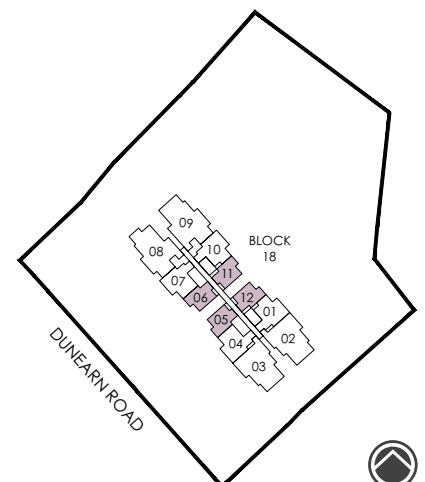
GH - Gas Hob

DB - Distribution Board

WM - Washer cum Dryer

CO - Conventional Oven

W - Washer



# 2-Bedroom

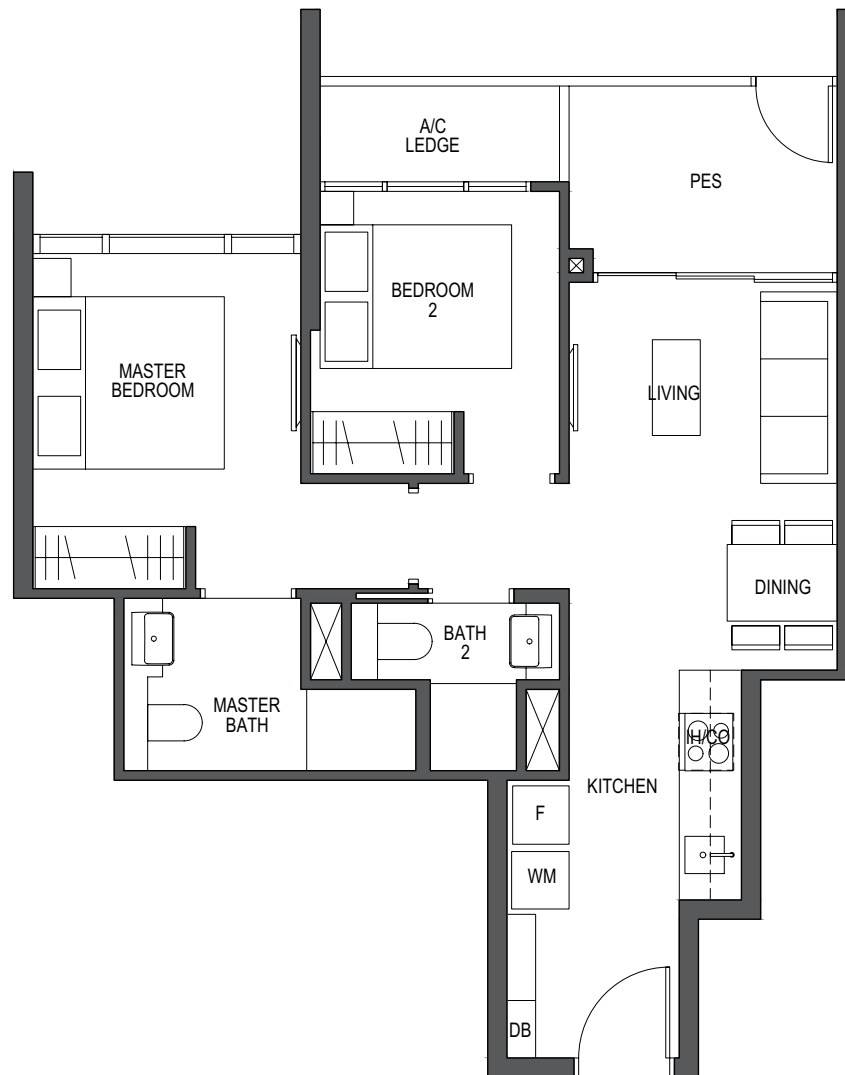
## TYPE B1-P

62 sq m / 667 sq ft

#02-01

\*#02-10

\*Mirror image

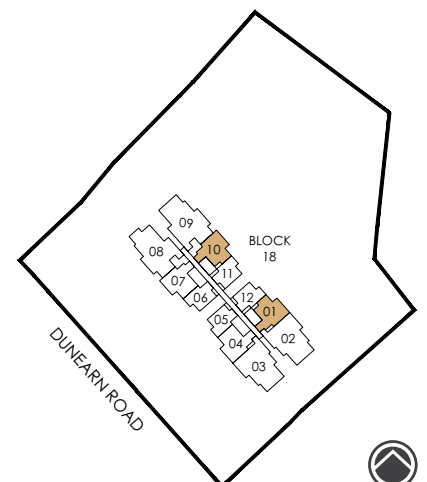


### LEGEND:

F - Fridge  
D - Dryer  
IH - Induction Hob

DW - Dishwasher  
GH - Gas Hob  
DB - Distribution Board

WM - Washer cum Dryer  
CO - Conventional Oven  
W - Washer



# 2-Bedroom

## TYPE B1

62 sq m / 667 sq ft

#02-07 to #29-07

#03-01 to #29-01

\*#02-04 to #29-04

\*#03-10 to #29-10

\*Mirror image

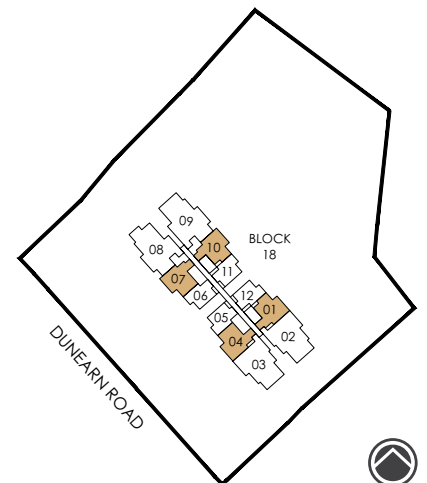


### LEGEND:

F - Fridge  
D - Dryer  
IH - Induction Hob

DW - Dishwasher  
GH - Gas Hob  
DB - Distribution Board

WM - Washer cum Dryer  
CO - Conventional Oven  
W - Washer



# 3-Bedroom

## TYPE C1-P

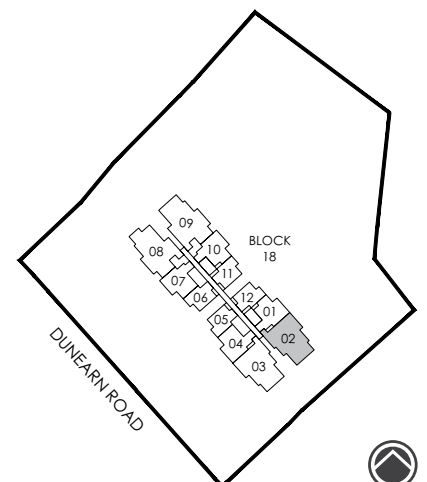
108 sq m / 1163 sq ft

#02-02



### LEGEND:

F - Fridge	DW - Dishwasher	WM - Washer cum Dryer
D - Dryer	GH - Gas Hob	CO - Conventional Oven
IH - Induction Hob	DB - Distribution Board	W - Washer



All plans are subjected to amendments as may be approved by the relevant authorities. Floor areas are approximate measurements and are subjected to final survey. BP Approval No. A1720-00009-2018-BP01 dated 26/08/2019



# 3-Bedroom

## TYPE C1

108 sq m / 1163 sq ft

#03-02 to #29-02

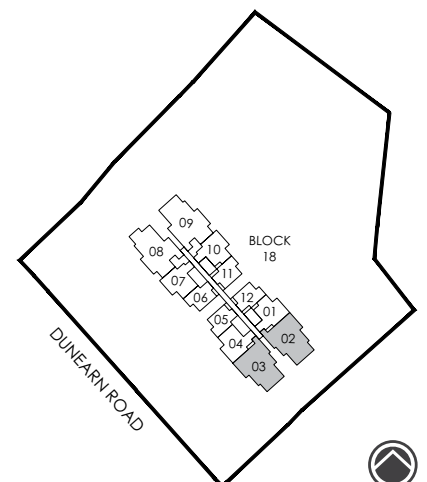
\*#02-03 to #29-03

\*Mirror image



**LEGEND:**

- |                    |                         |                        |
|--------------------|-------------------------|------------------------|
| F - Fridge         | DW - Dishwasher         | WM - Washer cum Dryer  |
| D - Dryer          | GH - Gas Hob            | CO - Conventional Oven |
| IH - Induction Hob | DB - Distribution Board | W - Washer             |

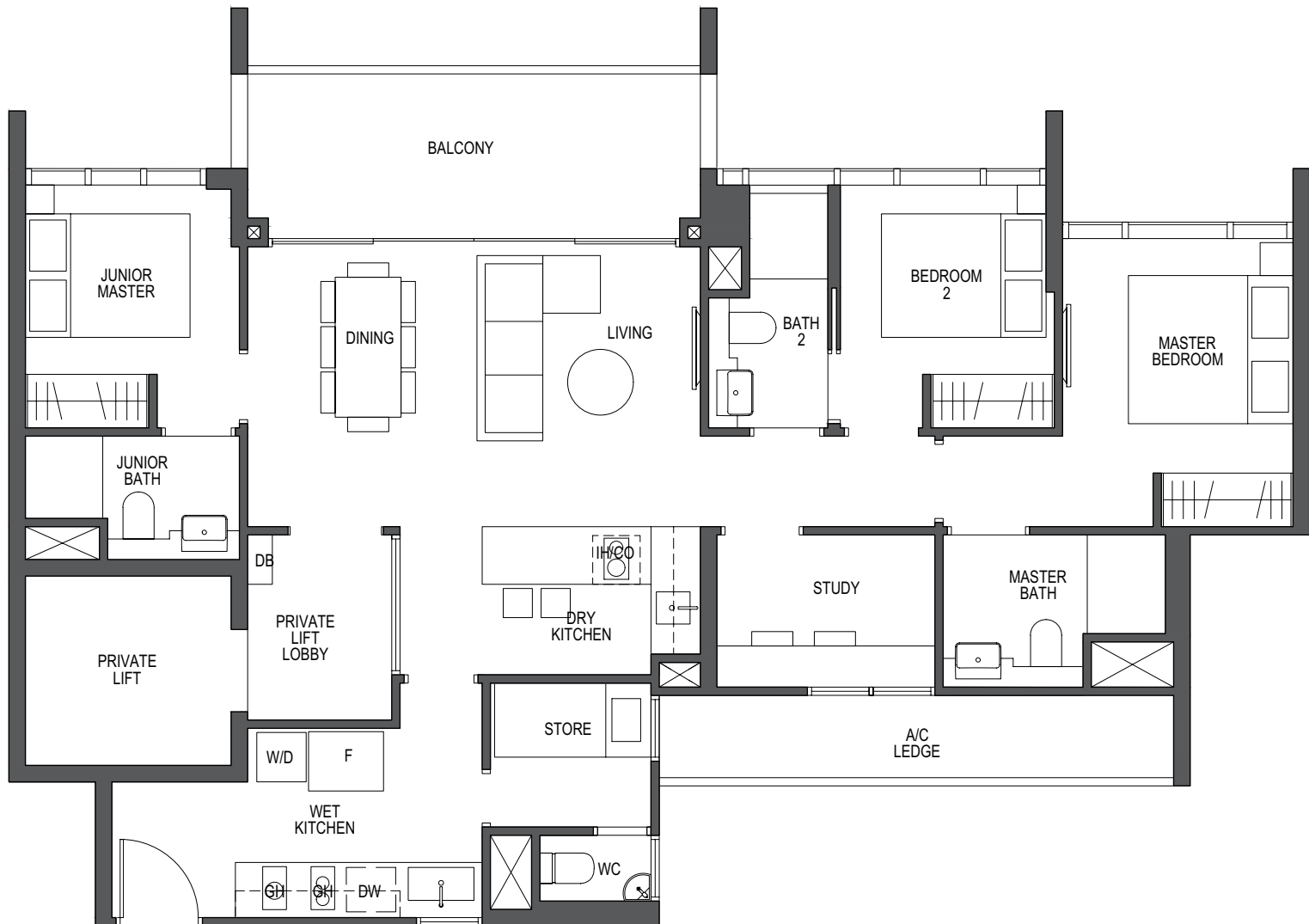


# 3-Bedroom + Study

## TYPE C2

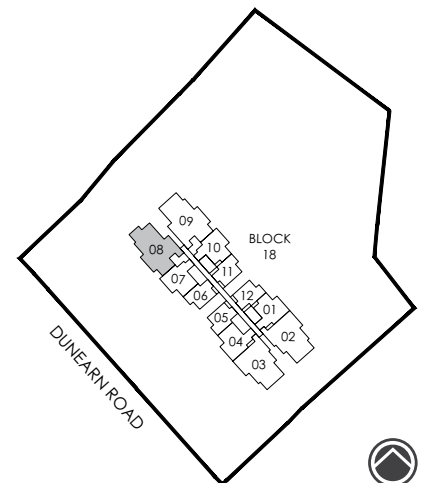
119 sq m / 1281 sq ft

#02-08 to #29-08



**LEGEND:**

- |                    |                         |                        |
|--------------------|-------------------------|------------------------|
| F - Fridge         | DW - Dishwasher         | WM - Washer cum Dryer  |
| D - Dryer          | GH - Gas Hob            | CO - Conventional Oven |
| IH - Induction Hob | DB - Distribution Board | W - Washer             |



All plans are subjected to amendments as may be approved by the relevant authorities. Floor areas are approximate measurements and are subjected to final survey. BP Approval No. A1720-00009-2018-BP01 dated 26/08/2019

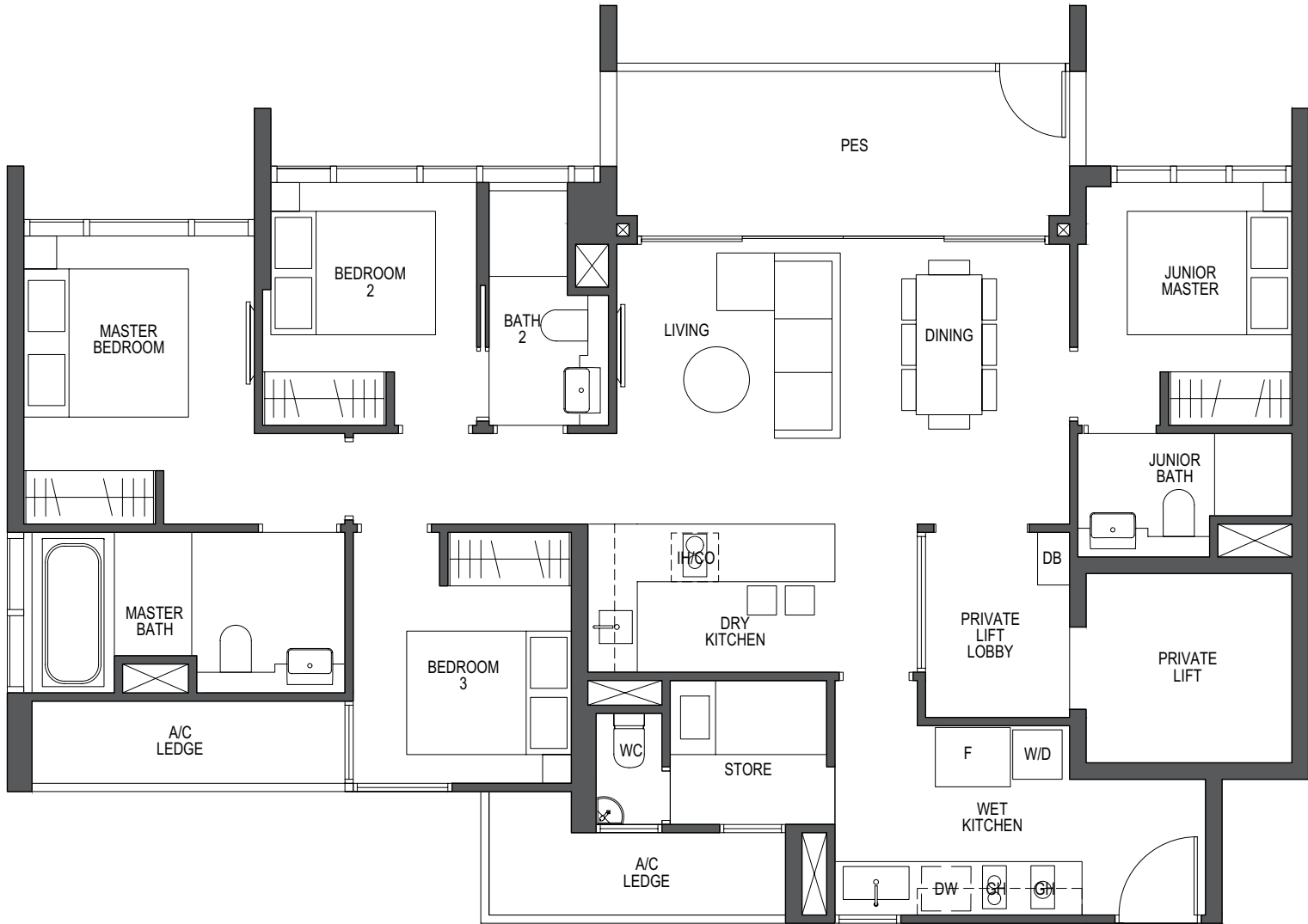


# 4-Bedroom

## TYPE D1-P

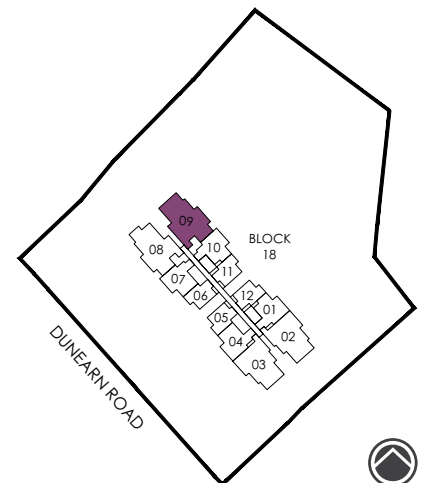
129 sq m / 1389 sq ft

#02-09



**LEGEND:**

- |                    |                         |                        |
|--------------------|-------------------------|------------------------|
| F - Fridge         | DW - Dishwasher         | WM - Washer cum Dryer  |
| D - Dryer          | GH - Gas Hob            | CO - Conventional Oven |
| IH - Induction Hob | DB - Distribution Board | W - Washer             |



All plans are subjected to amendments as may be approved by the relevant authorities. Floor areas are approximate measurements and are subjected to final survey. BP Approval No. A1720-00009-2018-BP01 dated 26/08/2019

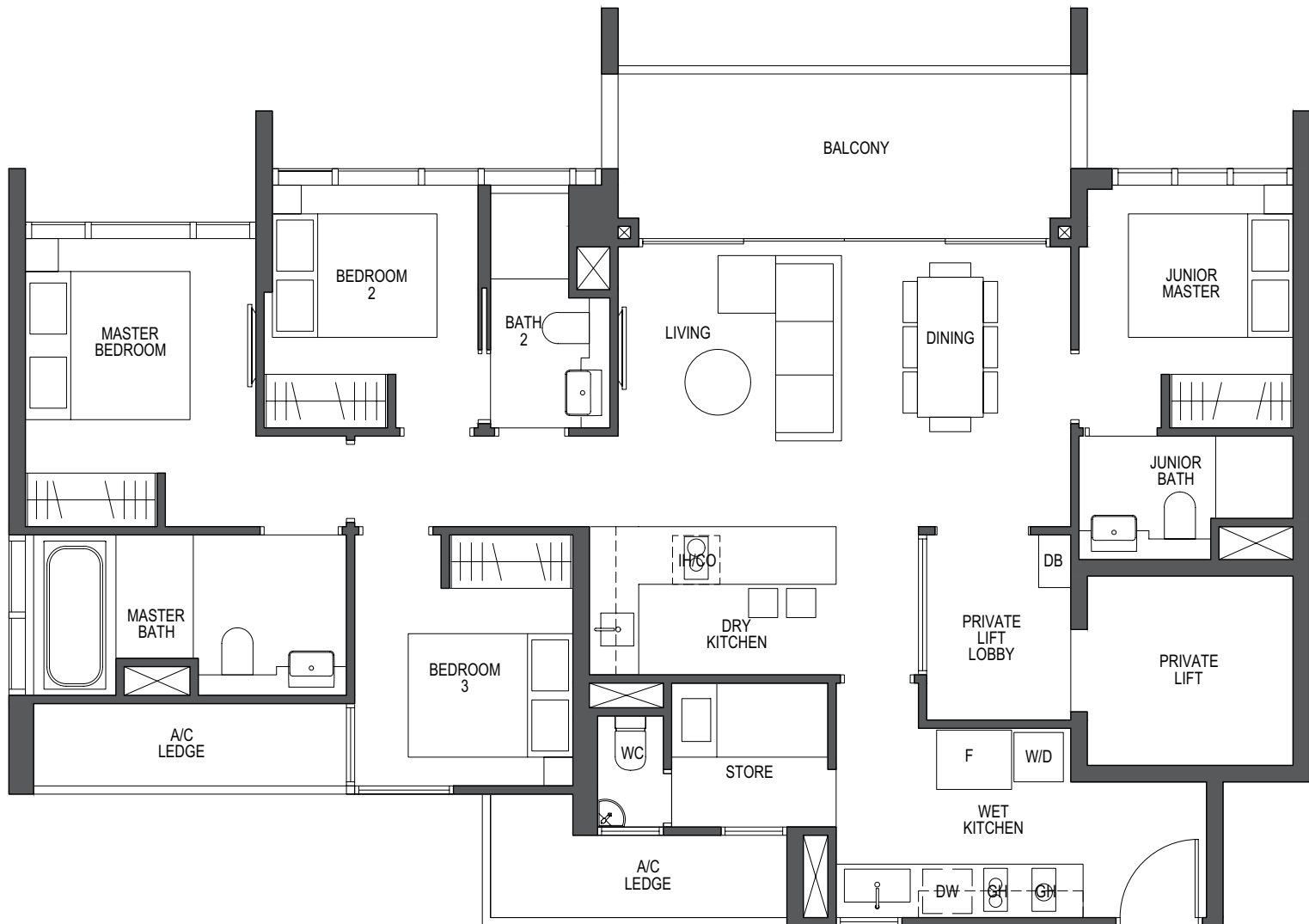


# 4-Bedroom

## TYPE D1

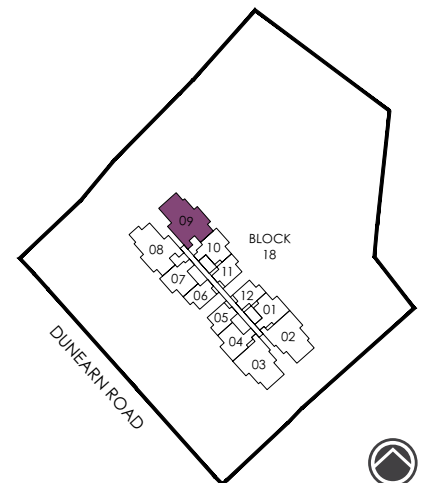
128 sq m / 1378 sq ft

#03-09 to #29-09



**LEGEND:**

- |                    |                         |                        |
|--------------------|-------------------------|------------------------|
| F - Fridge         | DW - Dishwasher         | WM - Washer cum Dryer  |
| D - Dryer          | GH - Gas Hob            | CO - Conventional Oven |
| IH - Induction Hob | DB - Distribution Board | W - Washer             |



All plans are subjected to amendments as may be approved by the relevant authorities. Floor areas are approximate measurements and are subjected to final survey. BP Approval No. A1720-00009-2018-BP01 dated 26/08/2019





# Penthouse

## TYPE PH-1

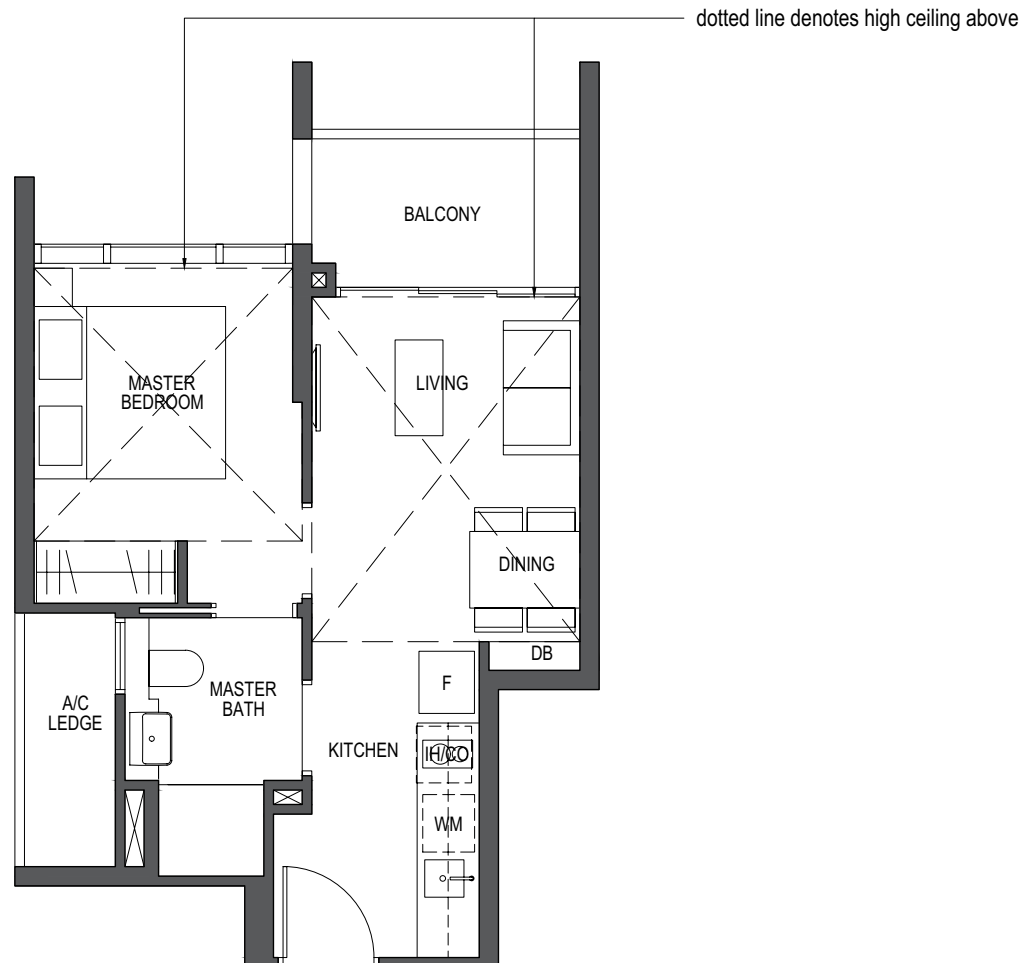
### 1-Bedroom

43 sq m / 463 sq ft

#30-06 & #30-12

\*#30-05 & #30-11

\*Mirror image

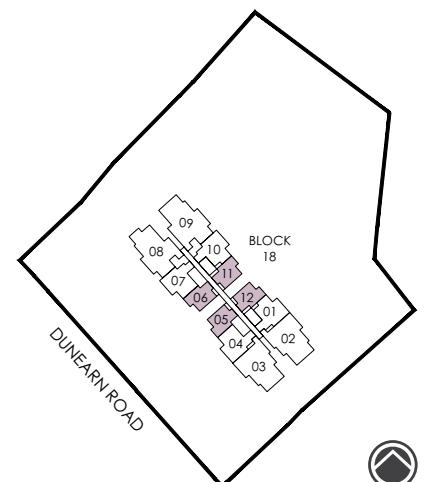


#### LEGEND:

F - Fridge  
D - Dryer  
IH - Induction Hob

DW - Dishwasher  
GH - Gas Hob  
DB - Distribution Board

WM - Washer cum Dryer  
CO - Conventional Oven  
W - Washer



# Penthouse

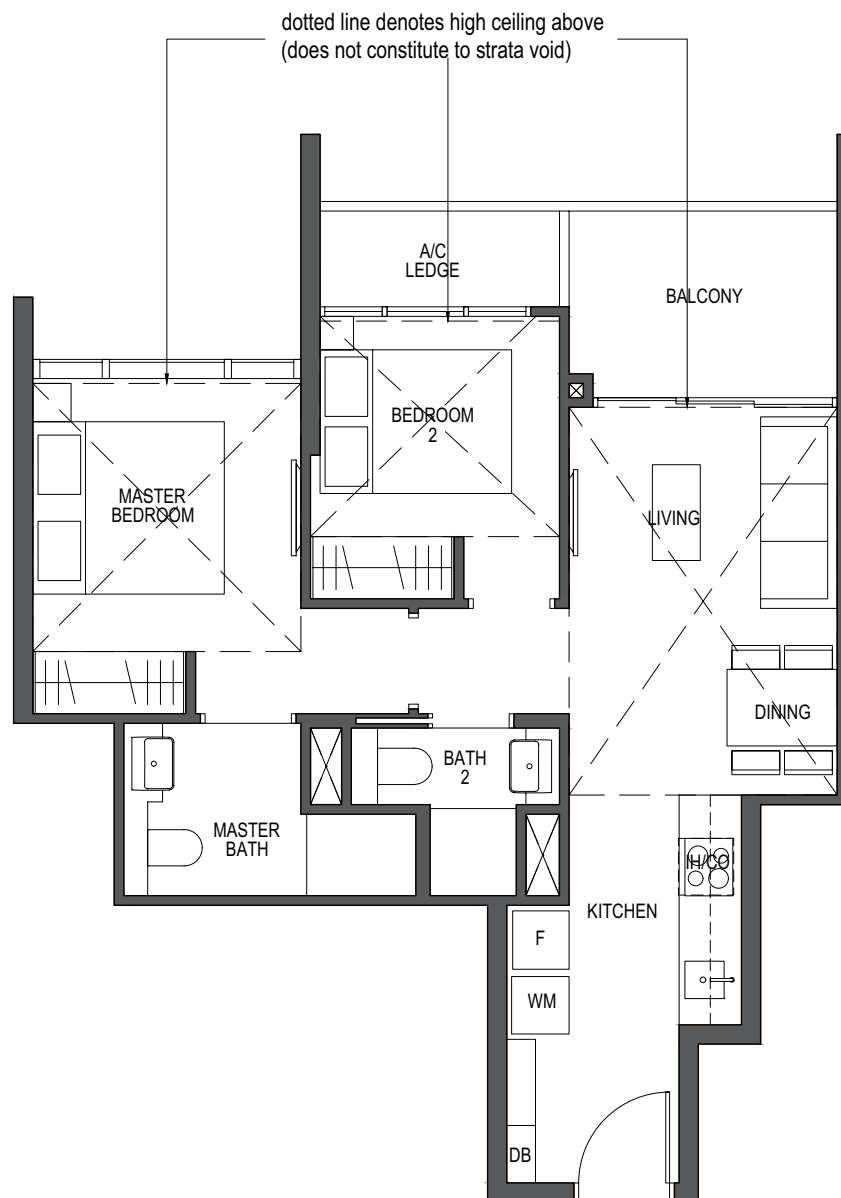
## TYPE PH-2

### 2-Bedroom

62 sq m / 667 sq ft

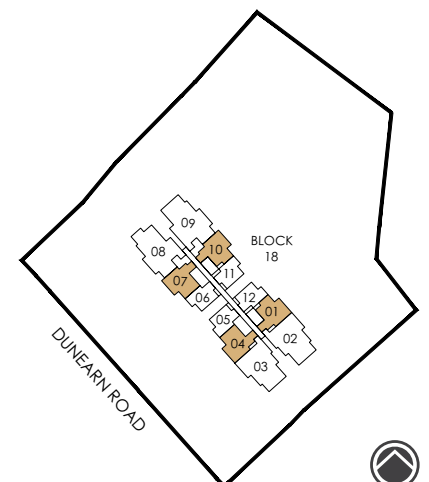
#30-01 & #30-07  
\*#30-10 & #30-04

\*Mirror image



#### LEGEND:

- |                    |                         |                        |
|--------------------|-------------------------|------------------------|
| F - Fridge         | DW - Dishwasher         | WM - Washer cum Dryer  |
| D - Dryer          | GH - Gas Hob            | CO - Conventional Oven |
| IH - Induction Hob | DB - Distribution Board | W - Washer             |



# Penthouse

## TYPE PH-3

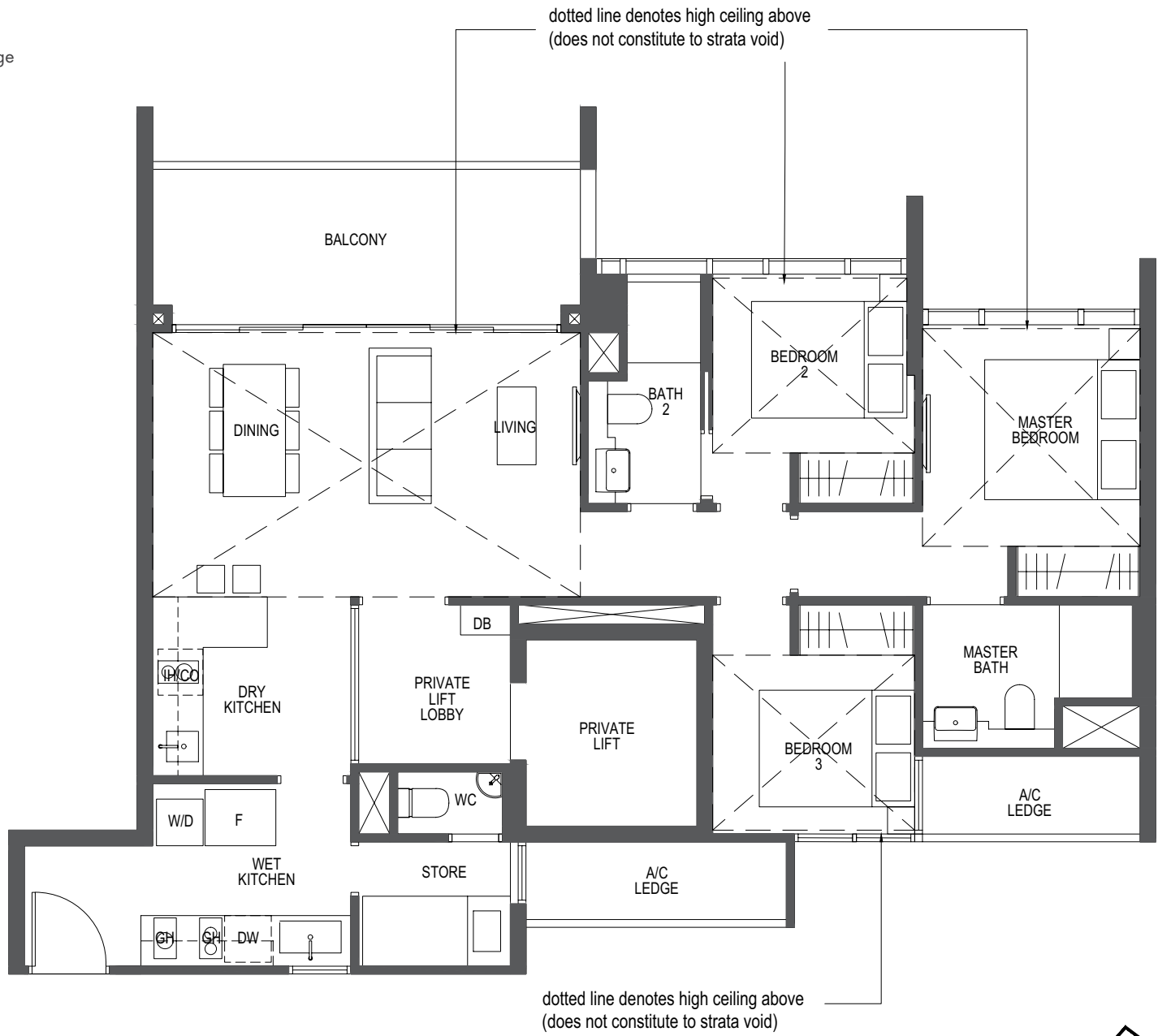
### 3-Bedroom

108 sq m / 1163 sq ft

#30-02

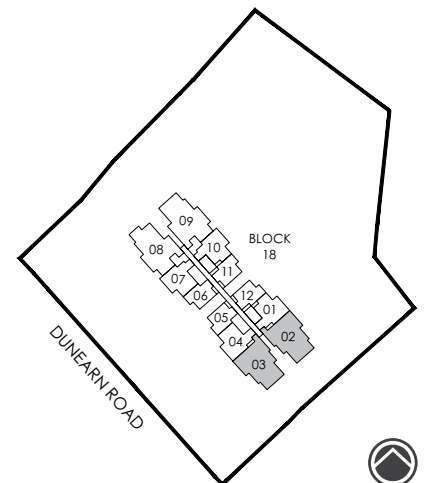
\*#30-03

\*Mirror image



**LEGEND:**

- |                    |                         |                        |
|--------------------|-------------------------|------------------------|
| F - Fridge         | DW - Dishwasher         | WM - Washer cum Dryer  |
| D - Dryer          | GH - Gas Hob            | CO - Conventional Oven |
| IH - Induction Hob | DB - Distribution Board | W - Washer             |



# Penthouse

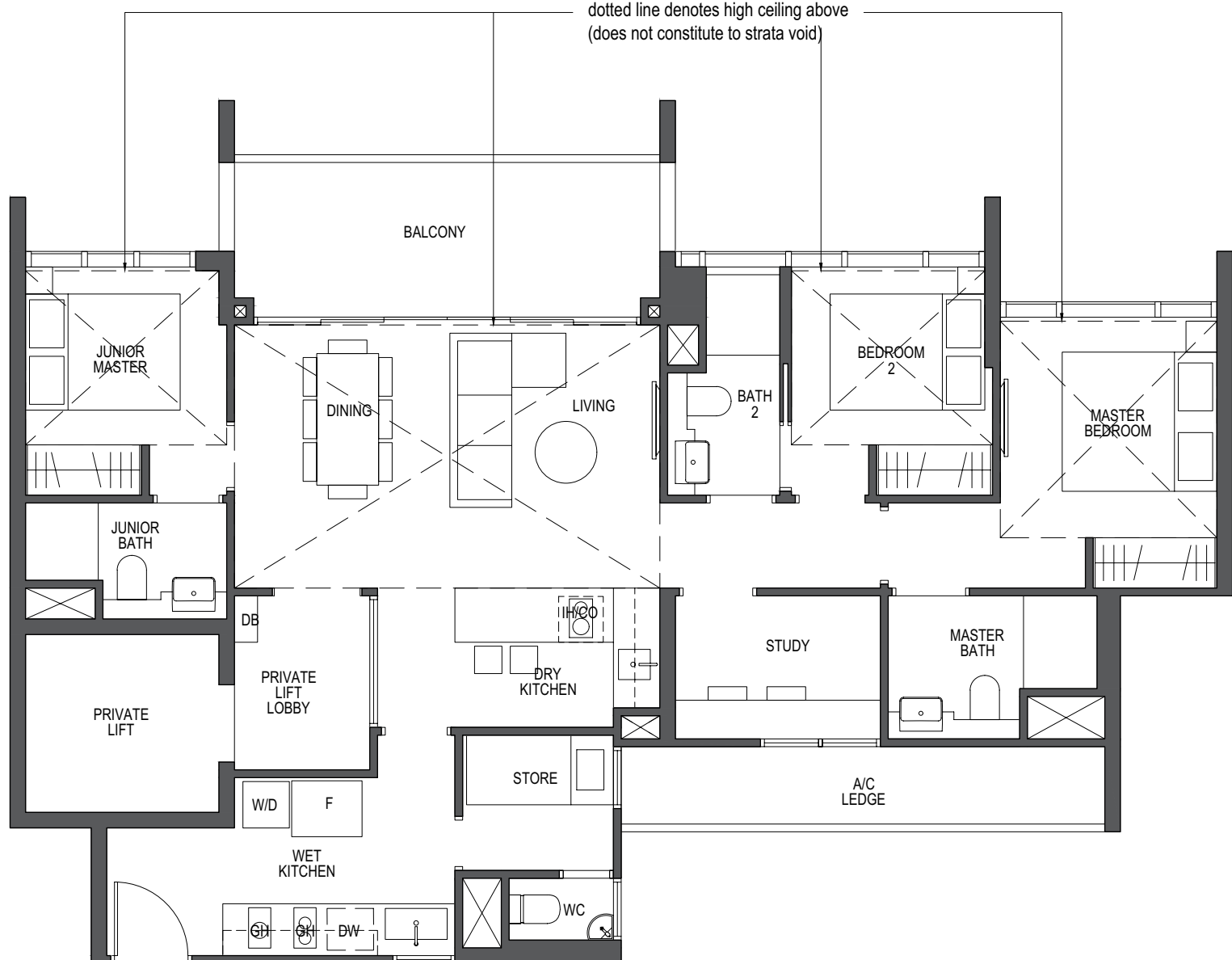
## TYPE PH-4

### 3-Bedroom+Study

119 sq m / 1281 sq ft

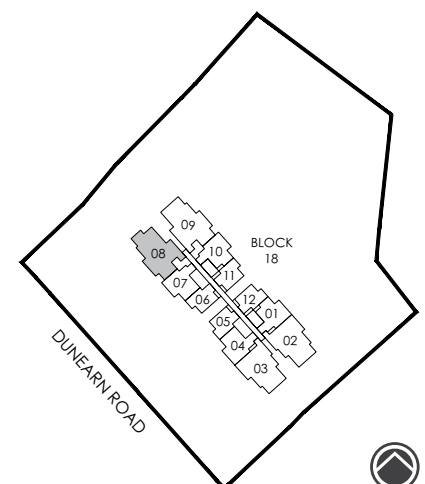
#30-08

dotted line denotes high ceiling above  
(does not constitute to strata void)



**LEGEND:**

- |                    |                         |                        |
|--------------------|-------------------------|------------------------|
| F - Fridge         | DW - Dishwasher         | WM - Washer cum Dryer  |
| D - Dryer          | GH - Gas Hob            | CO - Conventional Oven |
| IH - Induction Hob | DB - Distribution Board | W - Washer             |



All plans are subjected to amendments as may be approved by the relevant authorities. Floor areas are approximate measurements and are subjected to final survey. BP Approval No. A1720-00009-2018-BP01 dated 26/08/2019



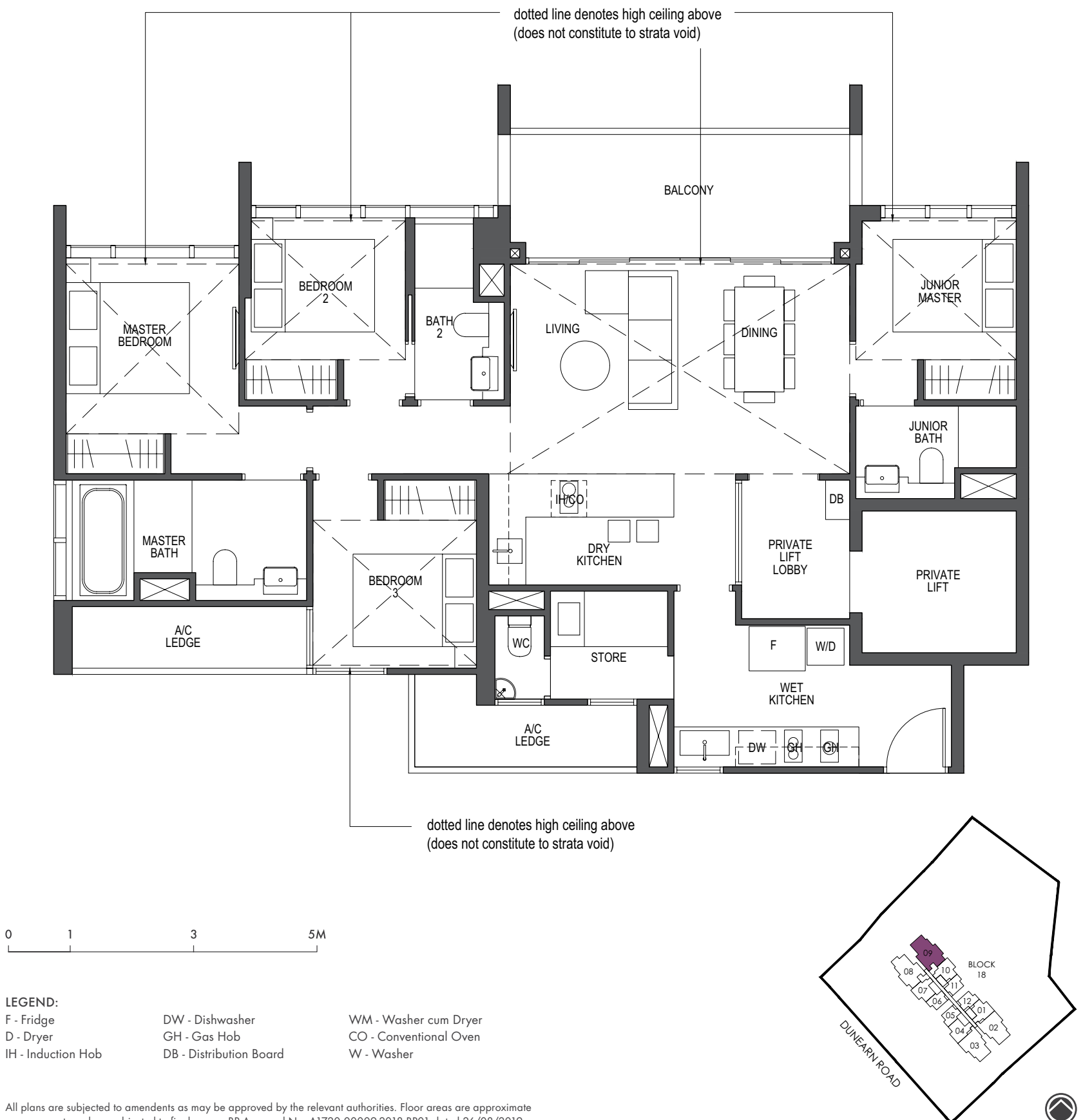
# Penthouse

## TYPE PH-5

### 4-Bedroom

128 sq m / 1378 sq ft

#30-09



All plans are subjected to amendments as may be approved by the relevant authorities. Floor areas are approximate measurements and are subjected to final survey. BP Approval No. A1720-00009-2018-BP01 dated 26/08/2019

