

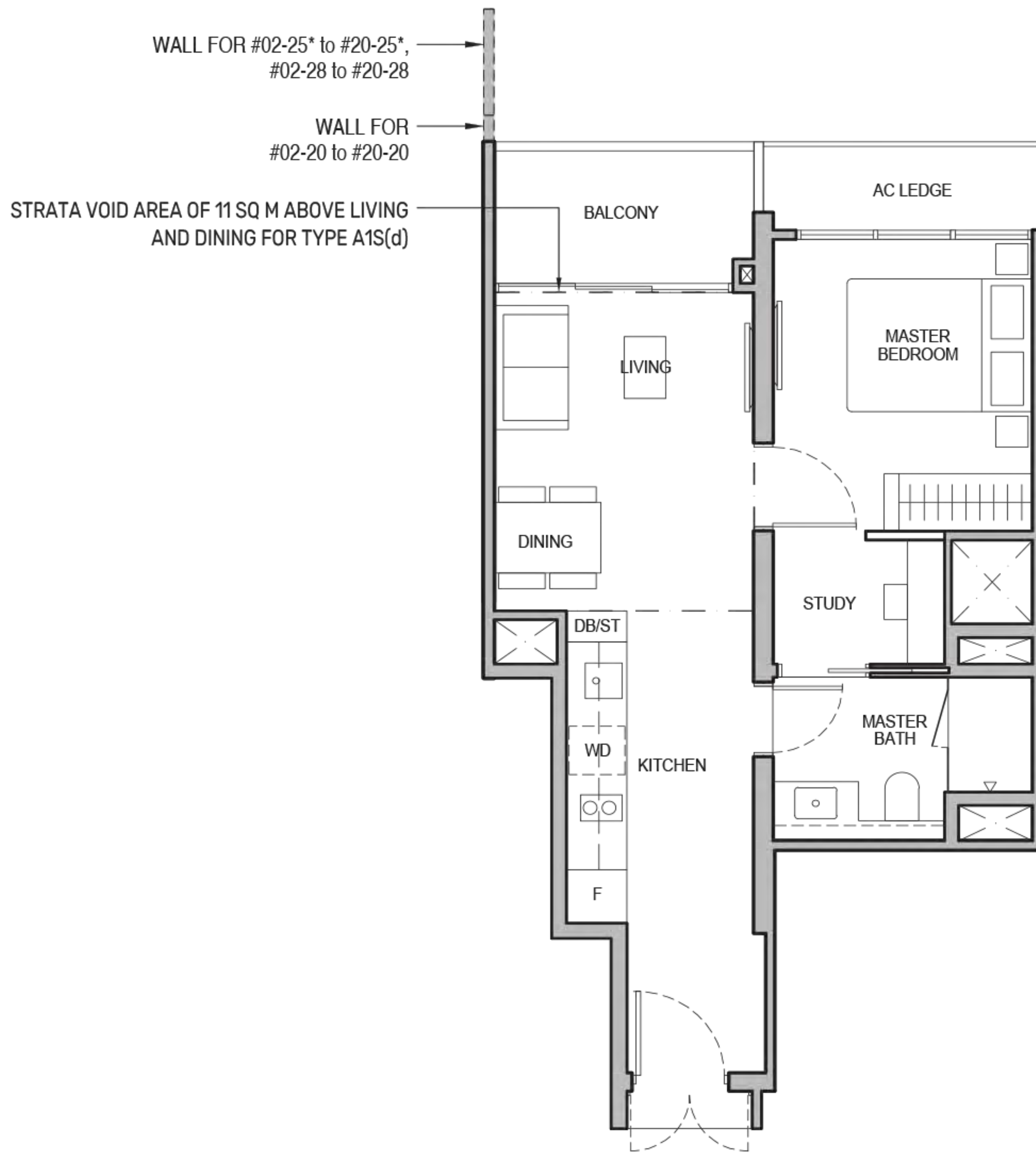
# 1-Bedroom + Study

## Type A1S

49 sq m / 527 sq ft

BLK 96 : #02-20 to #19-20

BLK 98 : #02-25\* to #19-25\*, #02-28 to #19-28



## Type A1S(d)

60 sq m / 646 sq ft

BLK 96 : #20-20

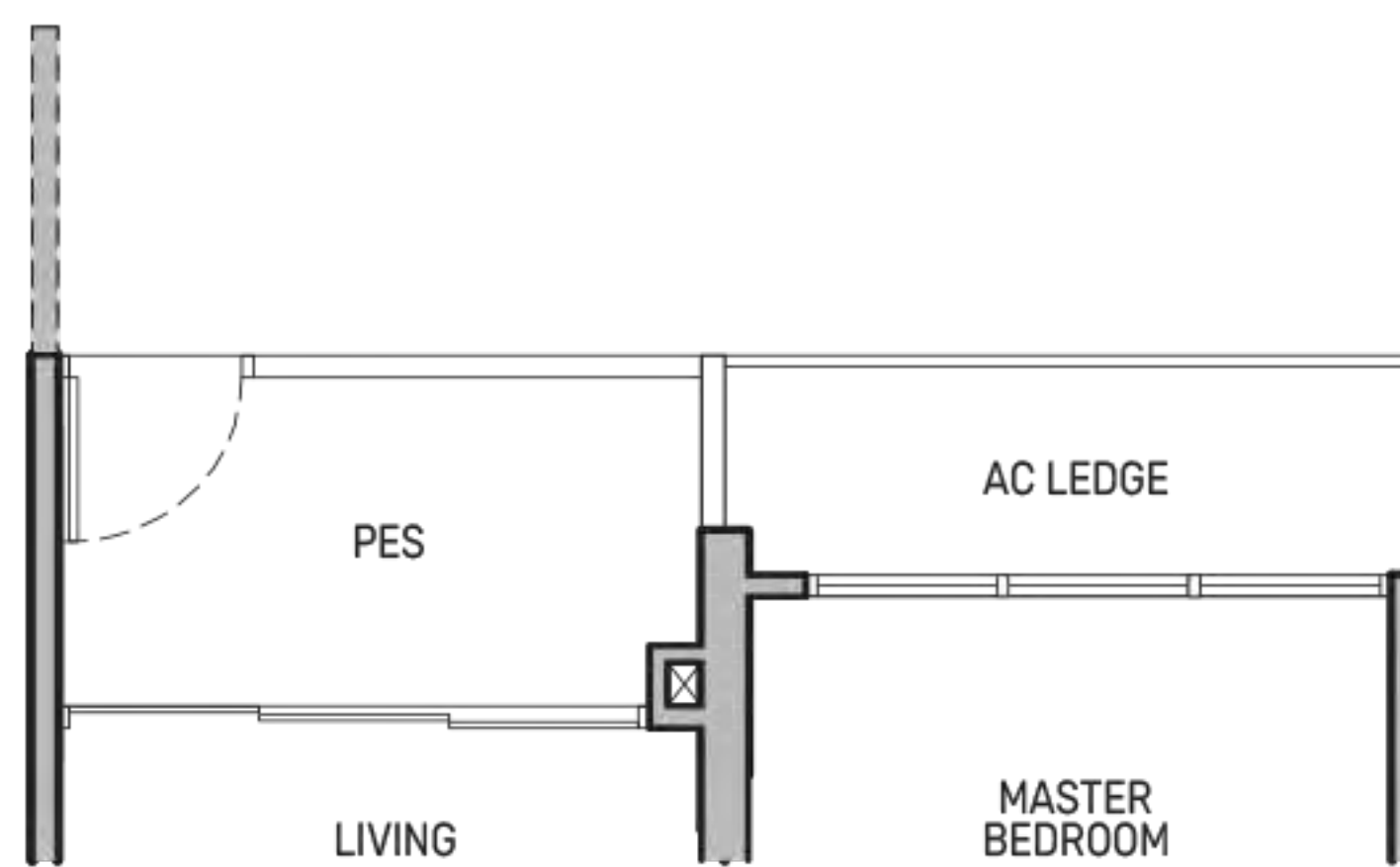
BLK 98 : #20-25\*, #20-28

Including strata void area of 11 sq m above living and dining with 4.4m floor to ceiling height

## Type A1S(p)

49 sq m / 527 sq ft

BLK 98 : #01-25\*



- PES - Private Enclosed Space
- F - Fridge
- HS - Household Shelter
- RC - Reinforced Concrete
- WD - Washer cum Dryer
- W/D - Washer & Dryer
- W - Washer
- D - Dryer
- DB/ST - Distribution Board/Storage
- WC - Water Closet
- DW - Dishwasher
- AC - Air-Conditioner

Wall not allowed to be hacked or altered

\* Mirror Image

Area includes air-conditioner (AC) ledge, balcony and strata void area where applicable. The plans are subject to change as may be approved by relevant authorities. All floor plans are approximate measurements only and are subject to government re-survey. The balcony shall not be enclosed unless with the approved balcony screen. For an illustration of the approved balcony screen, please refer to the diagram annexed hereto as "Annexure A".



Keyplan is not drawn to scale



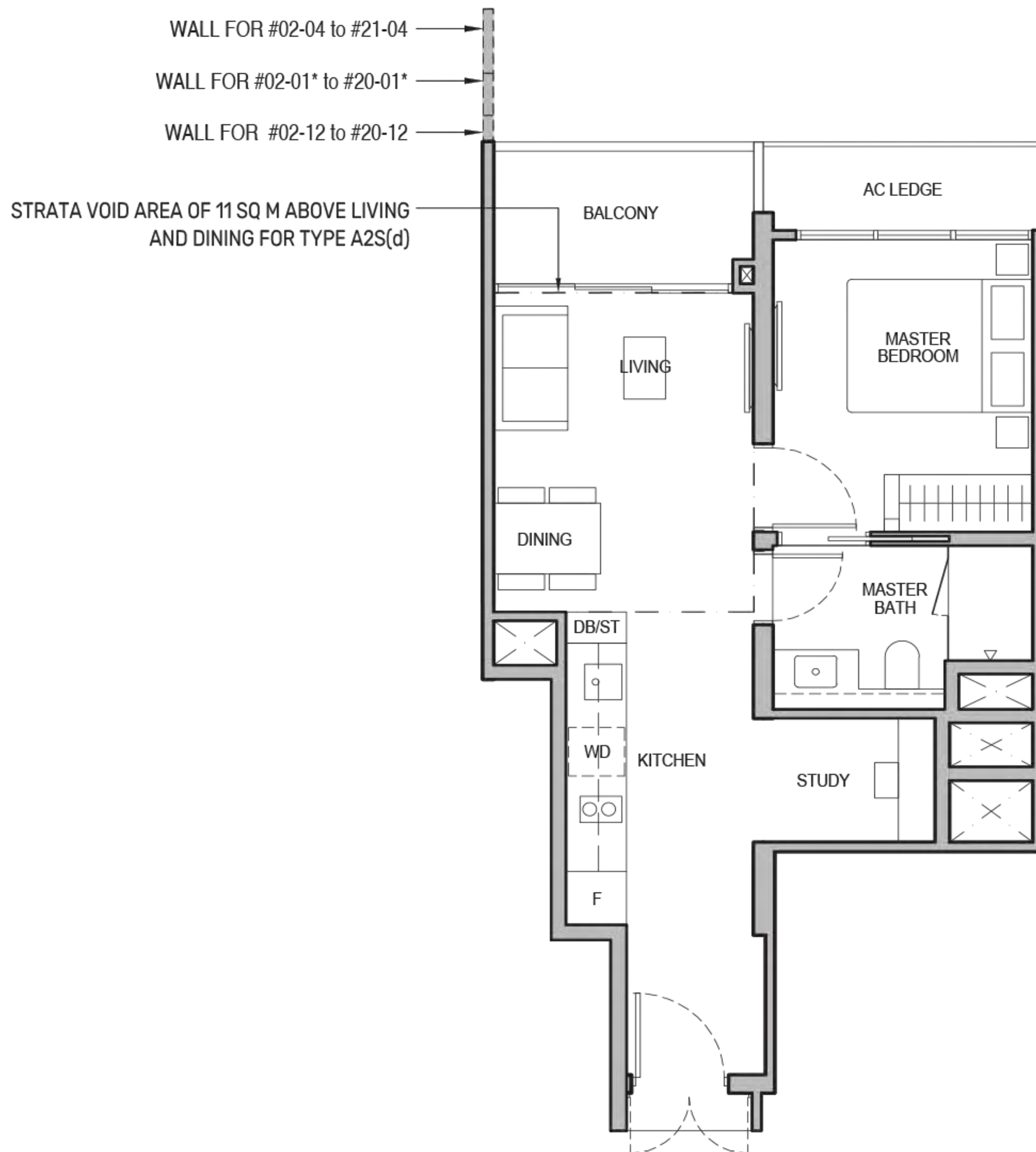
# 1-Bedroom + Study

## Type A2S

49 sq m / 527 sq ft

BLK 92 : #02-01\* to #19-01\*, #02-04 to #20-04

BLK 94 : #02-12 to #19-12



## Type A2S(d)

60 sq m / 646 sq ft

BLK 92 : #20-01\*, #21-04

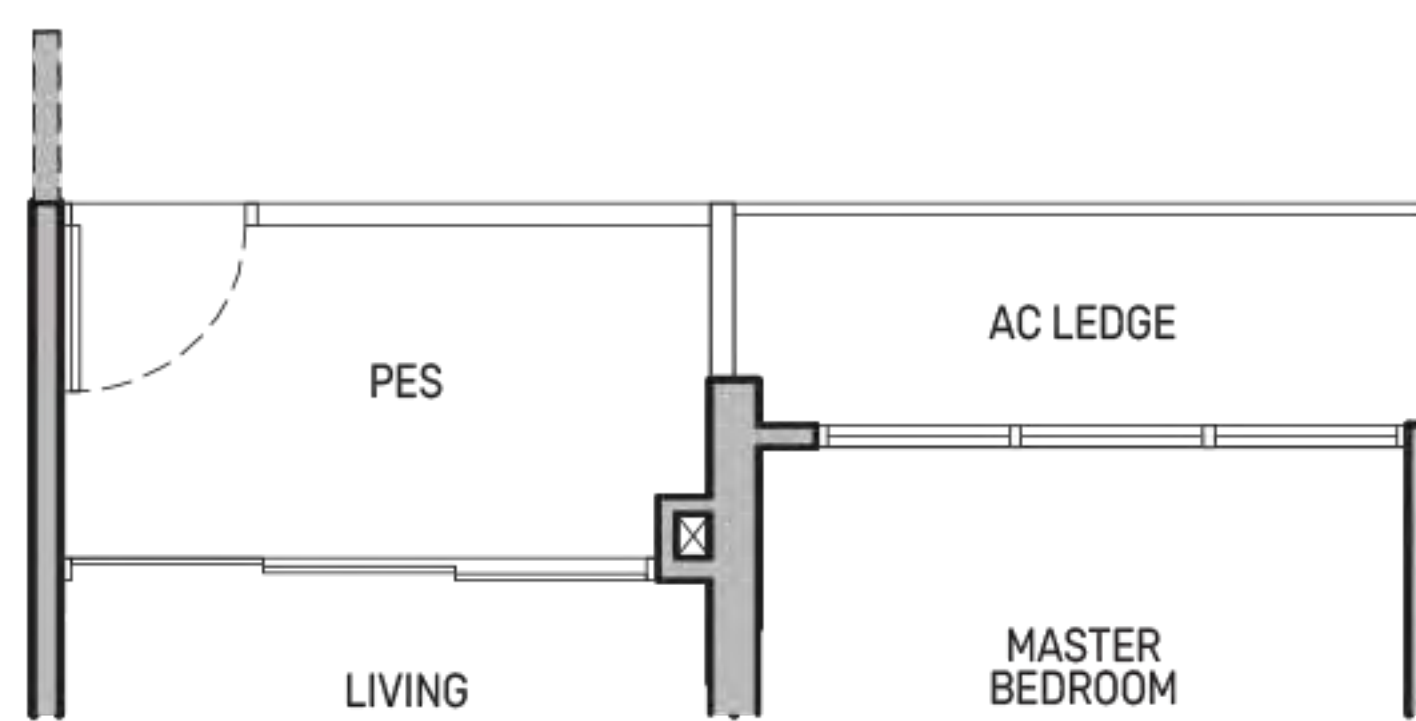
BLK 94 : #20-12

Including strata void area of 11 sq m above living and dining with 4.4m floor to ceiling height

## Type A2S(p)

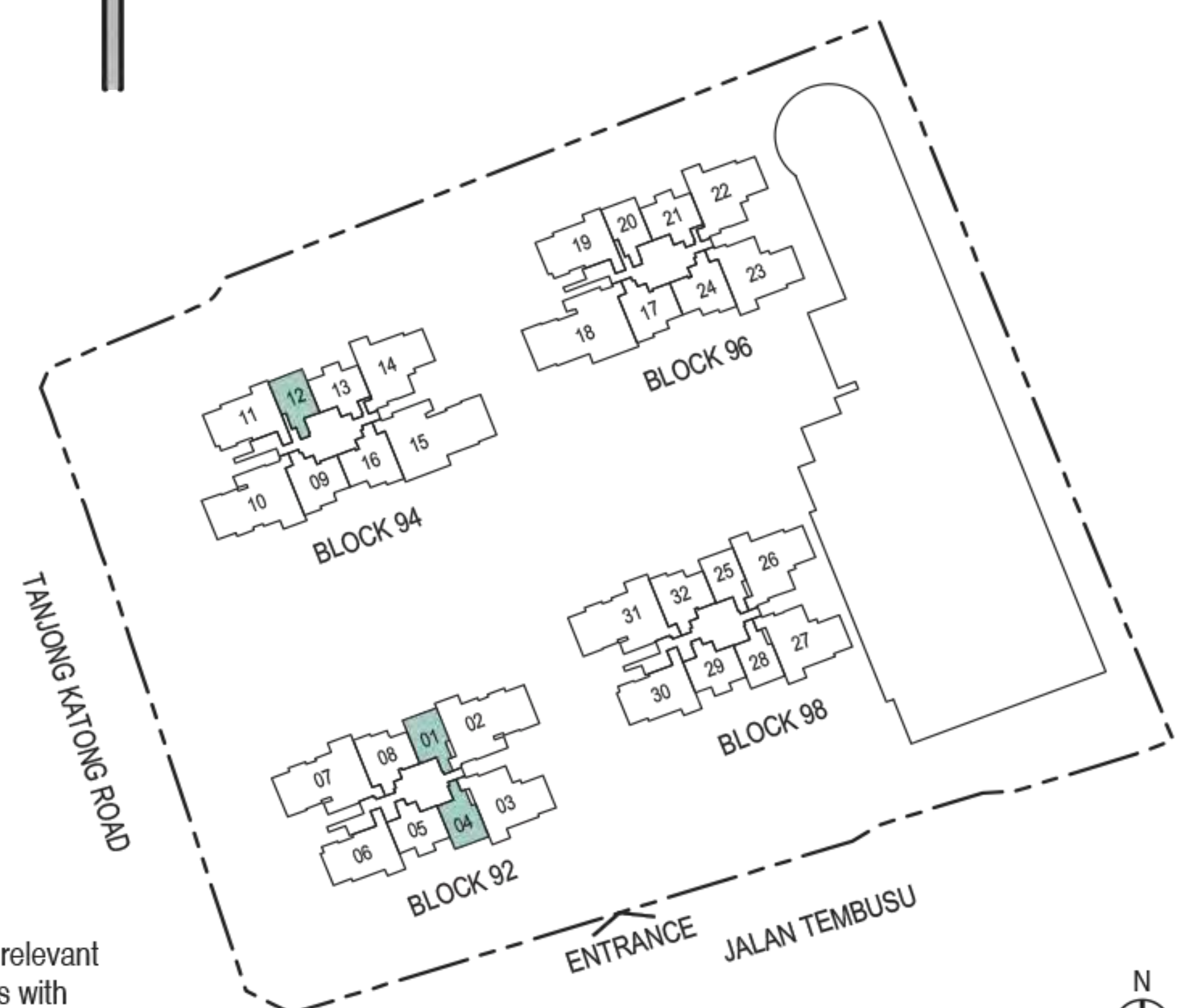
49 sq m / 527 sq ft

BLK 92 : #01-01\*



- |                              |                       |                                    |
|------------------------------|-----------------------|------------------------------------|
| PES - Private Enclosed Space | WD - Washer cum Dryer | DB/ST - Distribution Board/Storage |
| F - Fridge                   | W/D - Washer & Dryer  | WC - Water Closet                  |
| HS - Household Shelter       | W - Washer            | DW - Dishwasher                    |
| RC - Reinforced Concrete     | D - Dryer             | AC - Air-Conditioner               |
- Wall not allowed to be hacked or altered
 \* Mirror Image

Area includes air-conditioner (AC) ledge, balcony and strata void area where applicable. The plans are subject to change as may be approved by relevant authorities. All floor plans are approximate measurements only and are subject to government re-survey. The balcony shall not be enclosed unless with the approved balcony screen. For an illustration of the approved balcony screen, please refer to the diagram annexed hereto as "Annexure A".



Keyplan is not drawn to scale



# 2-Bedroom

## Type B1

62 sq m / 667 sq ft

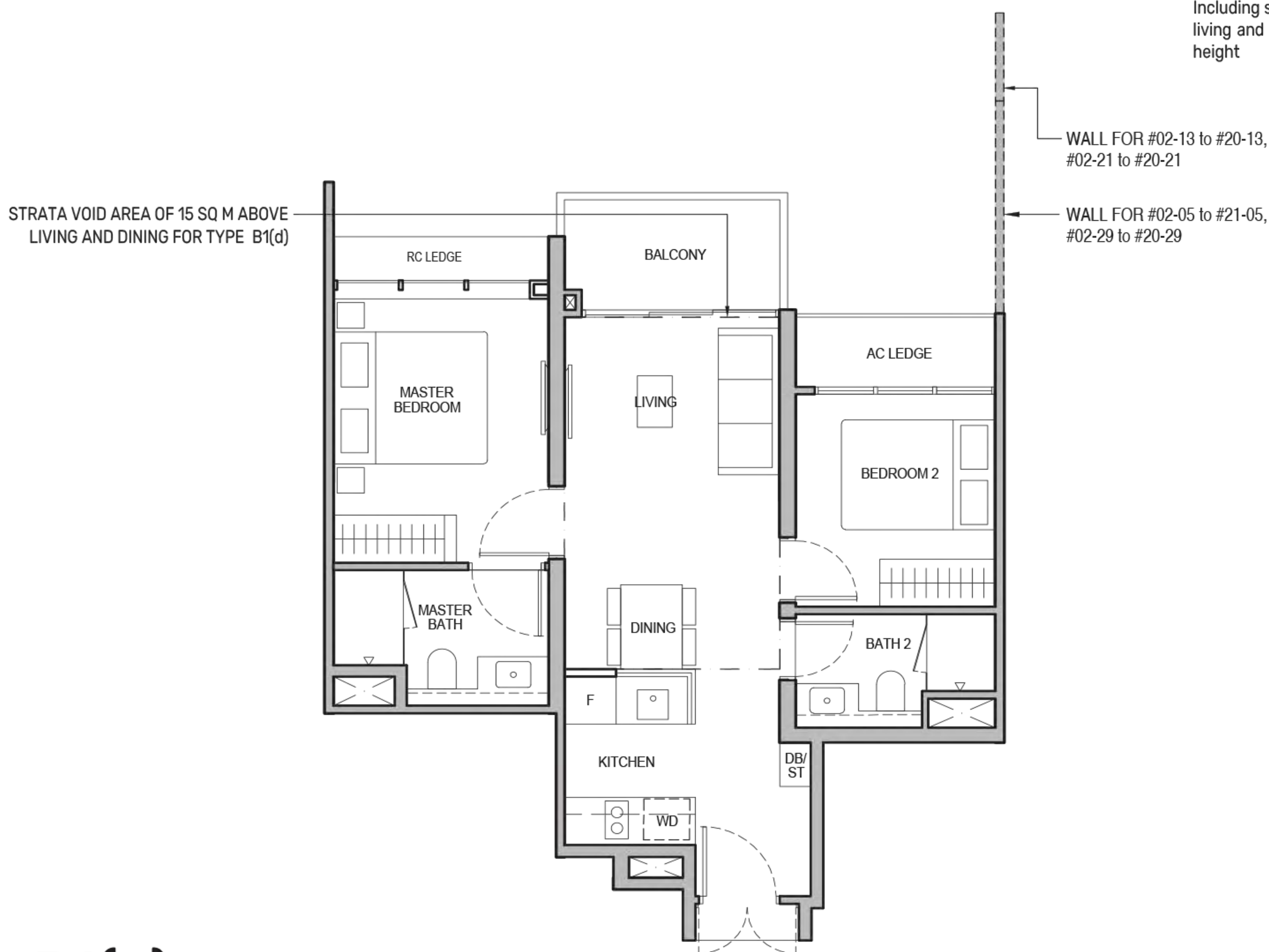
BLK 92 : #02-05 to #20-05  
 BLK 94 : #02-13 to #19-13  
 BLK 96 : #02-21 to #19-21  
 BLK 98 : #02-29 to #19-29

## Type B1(d)

77 sq m / 829 sq ft

BLK 92 : #21-05  
 BLK 94 : #20-13  
 BLK 96 : #20-21  
 BLK 98 : #20-29

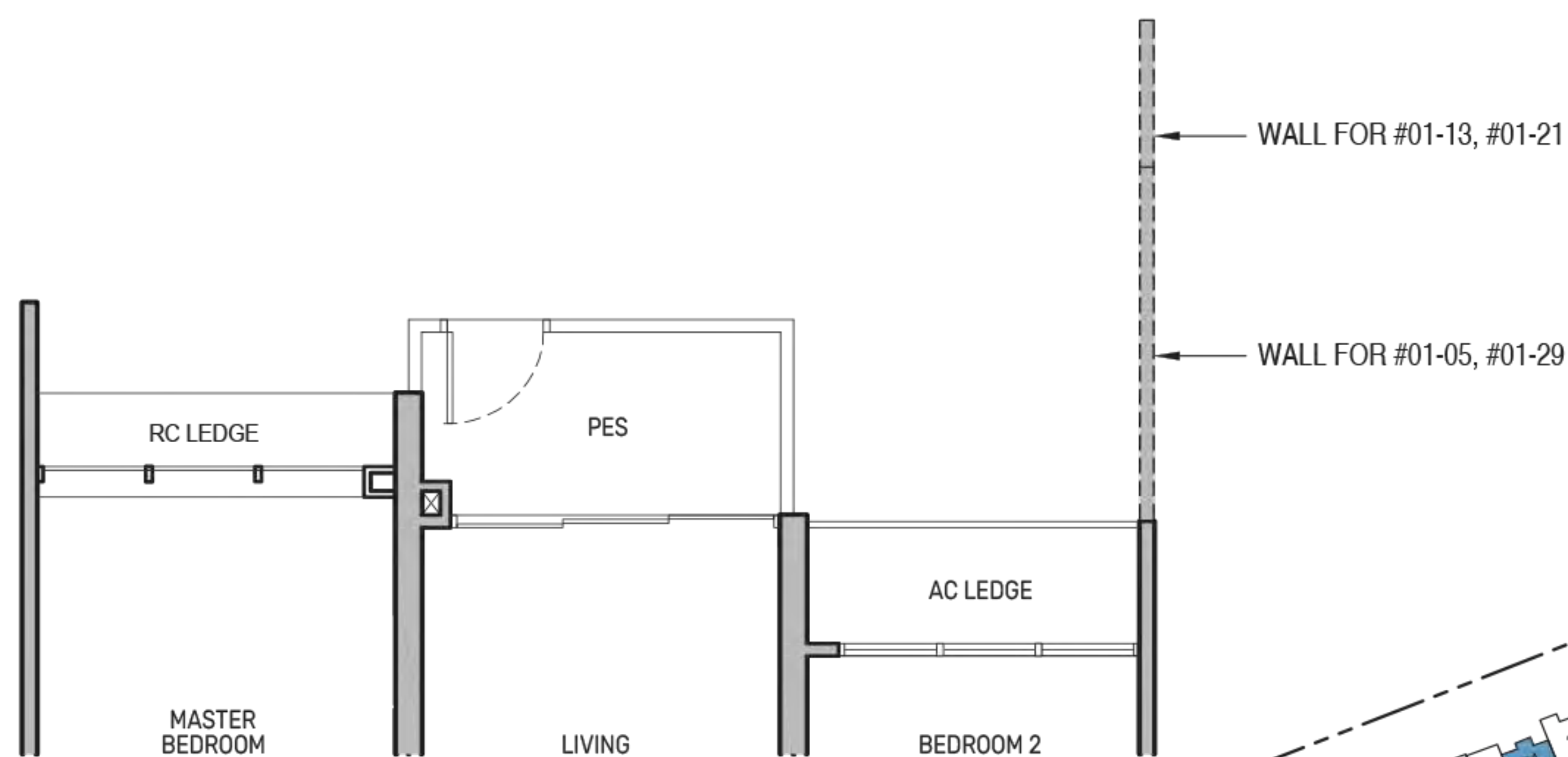
Including strata void area of 15 sq m above living and dining with 4.4m floor to ceiling height



## Type B1(p)

62 sq m / 667 sq ft

BLK 92 : #01-05  
 BLK 94 : #01-13  
 BLK 96 : #01-21  
 BLK 98 : #01-29



- PES - Private Enclosed Space
- F - Fridge
- HS - Household Shelter
- RC - Reinforced Concrete
- WD - Washer cum Dryer
- W/D - Washer & Dryer
- W - Washer
- D - Dryer
- DB/ST - Distribution Board/Storage
- WC - Water Closet
- DW - Dishwasher
- AC - Air-Conditioner
- Wall not allowed to be hacked or altered
- \* Mirror Image

Area includes air-conditioner (AC) ledge, balcony and strata void area where applicable. The plans are subject to change as may be approved by relevant authorities. All floor plans are approximate measurements only and are subject to government re-survey. The balcony shall not be enclosed unless with the approved balcony screen. For an illustration of the approved balcony screen, please refer to the diagram annexed hereto as "Annexure A".



Keyplan is not drawn to scale



# 2-Bedroom + Study

## Type B2S

69 sq m / 743 sq ft

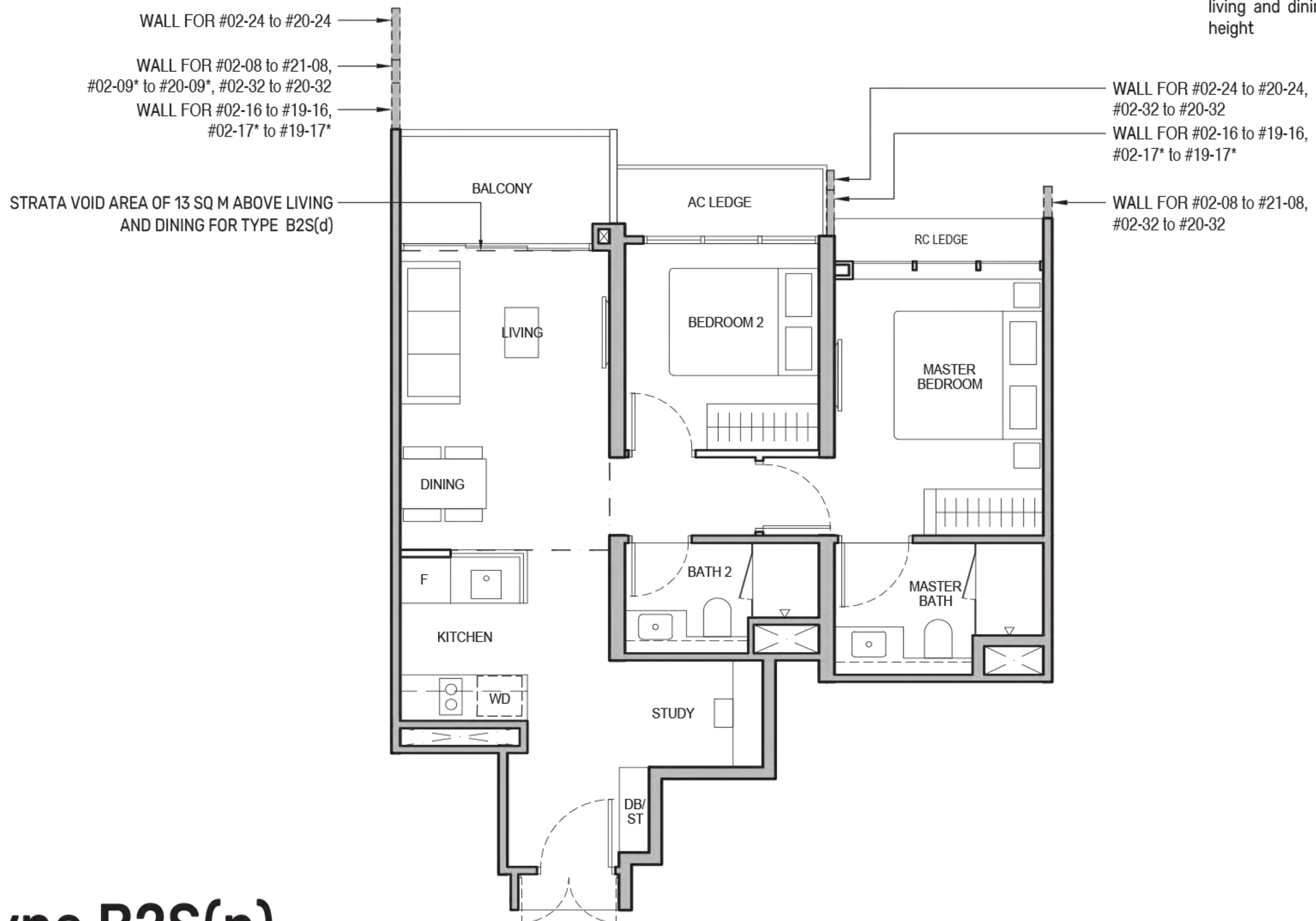
BLK 92 : #02-08 to #20-08  
 BLK 94 : #02-09\* to #19-09\*, #02-16 to #19-16  
 BLK 96 : #02-17\* to #19-17\*, #02-24 to #19-24  
 BLK 98 : #02-32 to #19-32

## Type B2S(d)

82 sq m / 883 sq ft

BLK 92 : #21-08  
 BLK 94 : #20-09\*  
 BLK 96 : #20-24  
 BLK 98 : #20-32

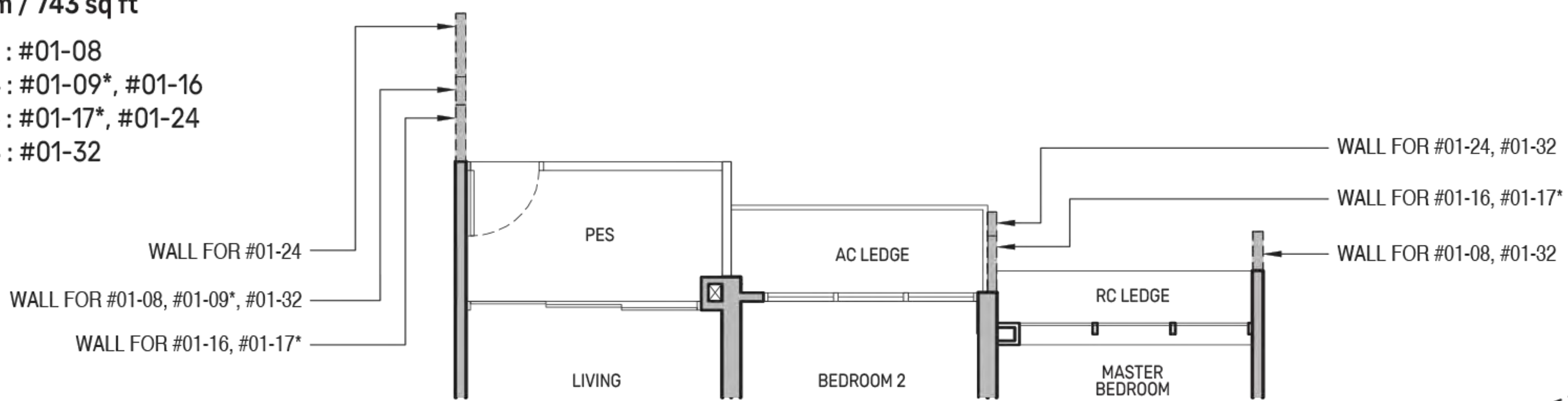
Including strata void area of 13 sq m above living and dining with 4.4m floor to ceiling height



## Type B2S(p)

69 sq m / 743 sq ft

BLK 92 : #01-08  
 BLK 94 : #01-09\*, #01-16  
 BLK 96 : #01-17\*, #01-24  
 BLK 98 : #01-32



- PES - Private Enclosed Space
- F - Fridge
- HS - Household Shelter
- RC - Reinforced Concrete
- WD - Washer cum Dryer
- W/D - Washer & Dryer
- W - Washer
- D - Dryer
- DB/ST - Distribution Board/Storage
- WC - Water Closet
- DW - Dishwasher
- AC - Air-Conditioner
- Wall not allowed to be hacked or altered
- \* Mirror Image

Area includes air-conditioner (AC) ledge, balcony and strata void area where applicable. The plans are subject to change as may be approved by relevant authorities. All floor plans are approximate measurements only and are subject to government re-survey. The balcony shall not be enclosed unless with the approved balcony screen. For an illustration of the approved balcony screen, please refer to the diagram annexed hereto as "Annexure A".



Keyplan is not drawn to scale



# 3-Bedroom

## Type C1

92 sq m / 990 sq ft

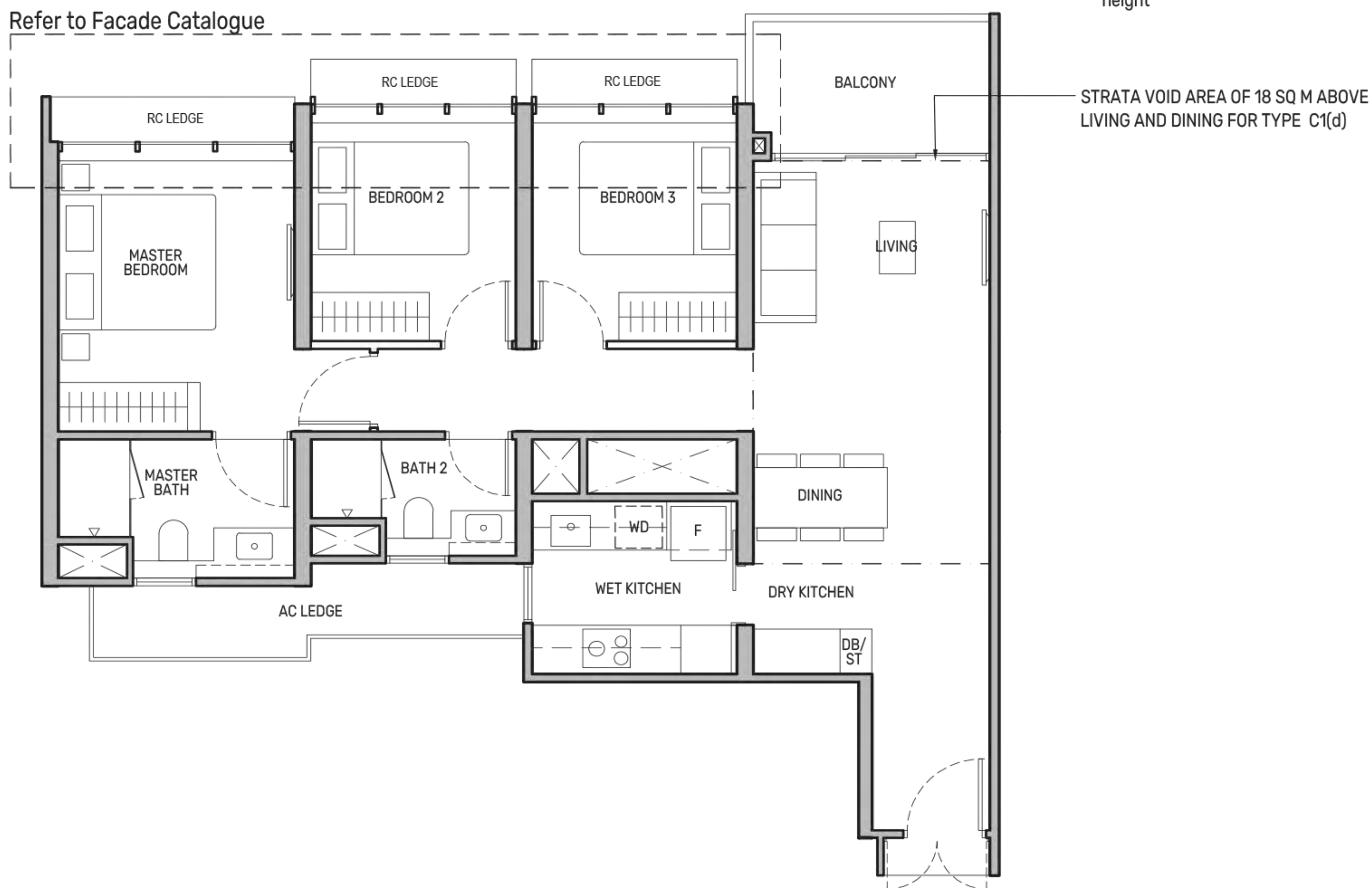
BLK 92 : #02-06\* to #20-06\*  
 BLK 94 : #02-11 to #19-11  
 BLK 96 : #02-19 to #19-19  
 BLK 98 : #03-30\* to #19-30\*

## Type C1(d)

110 sq m / 1184 sq ft

BLK 92 : #21-06\*  
 BLK 94 : #20-11  
 BLK 96 : #20-19  
 BLK 98 : #20-30\*

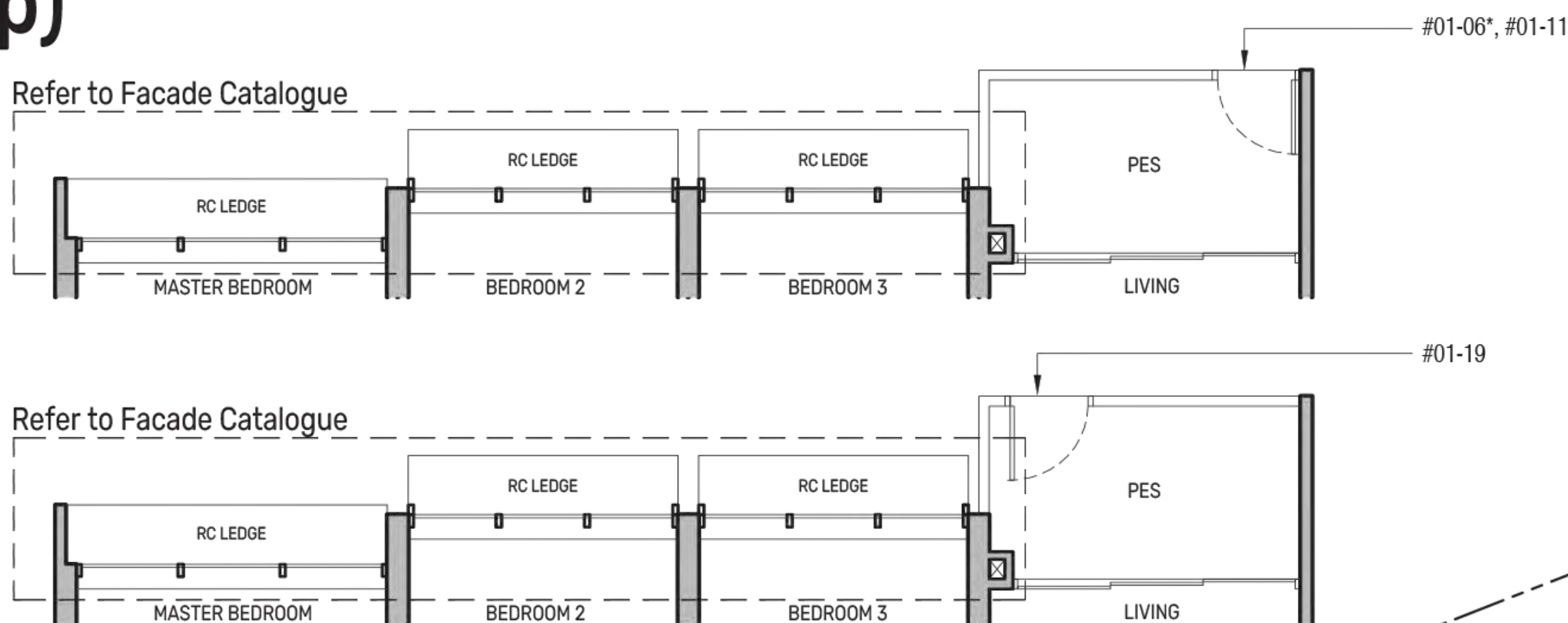
Including strata void area of 18 sq m above living and dining with 4.4m floor to ceiling height



## Type C1(p)

92 sq m / 990 sq ft

BLK 92 : #01-06\*  
 BLK 94 : #01-11  
 BLK 96 : #01-19



- PES - Private Enclosed Space
- F - Fridge
- HS - Household Shelter
- RC - Reinforced Concrete
- WD - Washer cum Dryer
- W/D - Washer & Dryer
- W - Washer
- D - Dryer
- DB/ST - Distribution Board/Storage
- WC - Water Closet
- DW - Dishwasher
- AC - Air-Conditioner

Wall not allowed to be hacked or altered

\* Mirror Image

Area includes air-conditioner (AC) ledge, balcony and strata void area where applicable. The plans are subject to change as may be approved by relevant authorities. All floor plans are approximate measurements only and are subject to government re-survey. The balcony shall not be enclosed unless with the approved balcony screen. For an illustration of the approved balcony screen, please refer to the diagram annexed hereto as "Annexure A".



Keyplan is not drawn to scale



# 3-Bedroom + Study

## Type C2S

109 sq m / 1173 sq ft

BLK 92 : #02-03 to #20-03

BLK 94 : #02-14\* to #19-14\*

BLK 96 : #02-22\* to #19-22\*, #02-23 to #19-23

BLK 98 : #02-26\* to #19-26\*, #02-27 to #19-27

## Type C2S(d)

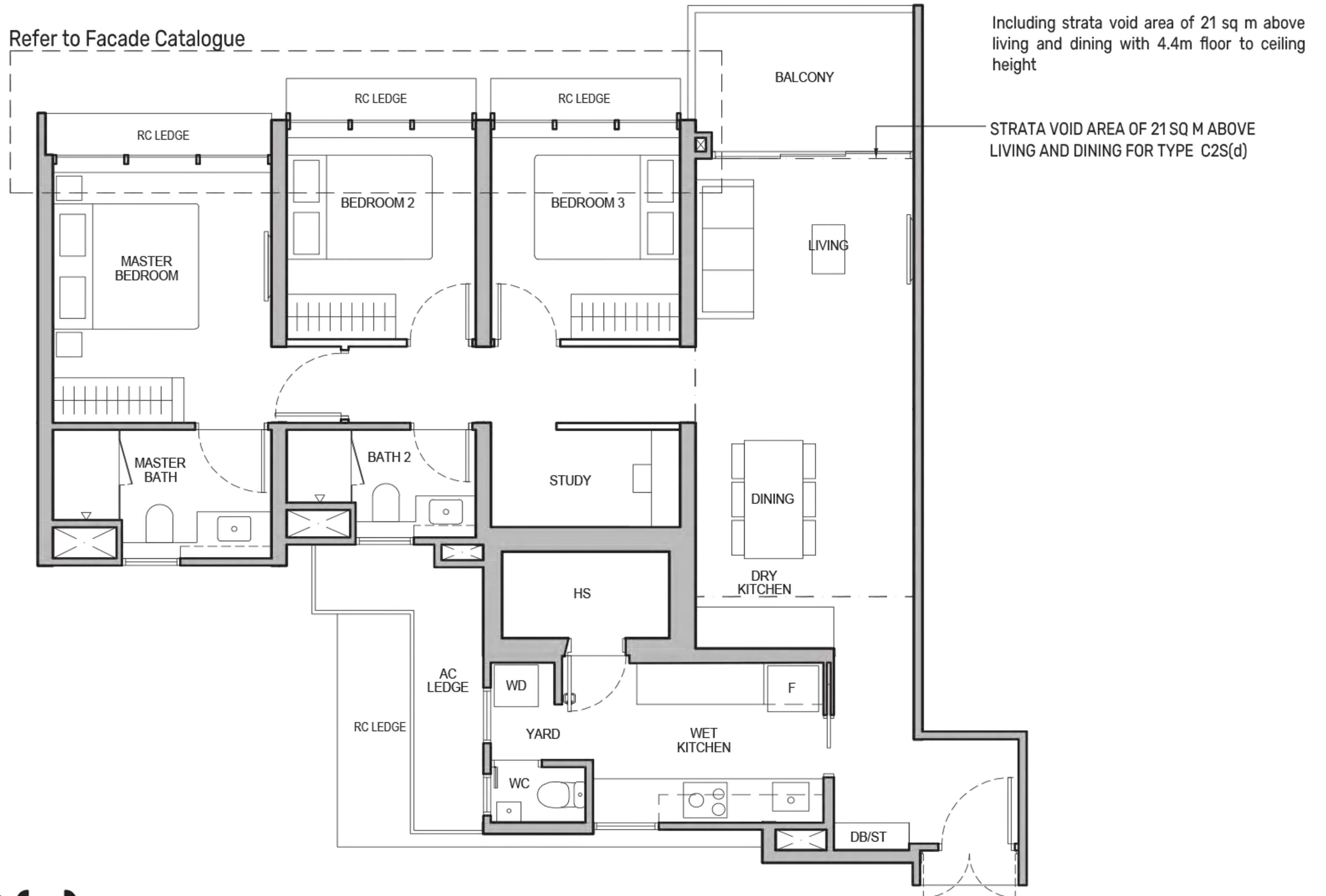
130 sq m / 1399 sq ft

BLK 92 : #21-03

BLK 94 : #20-14\*

BLK 96 : #20-22\*, #20-23

BLK 98 : #20-26\*, #20-27



## Type C2S(p)

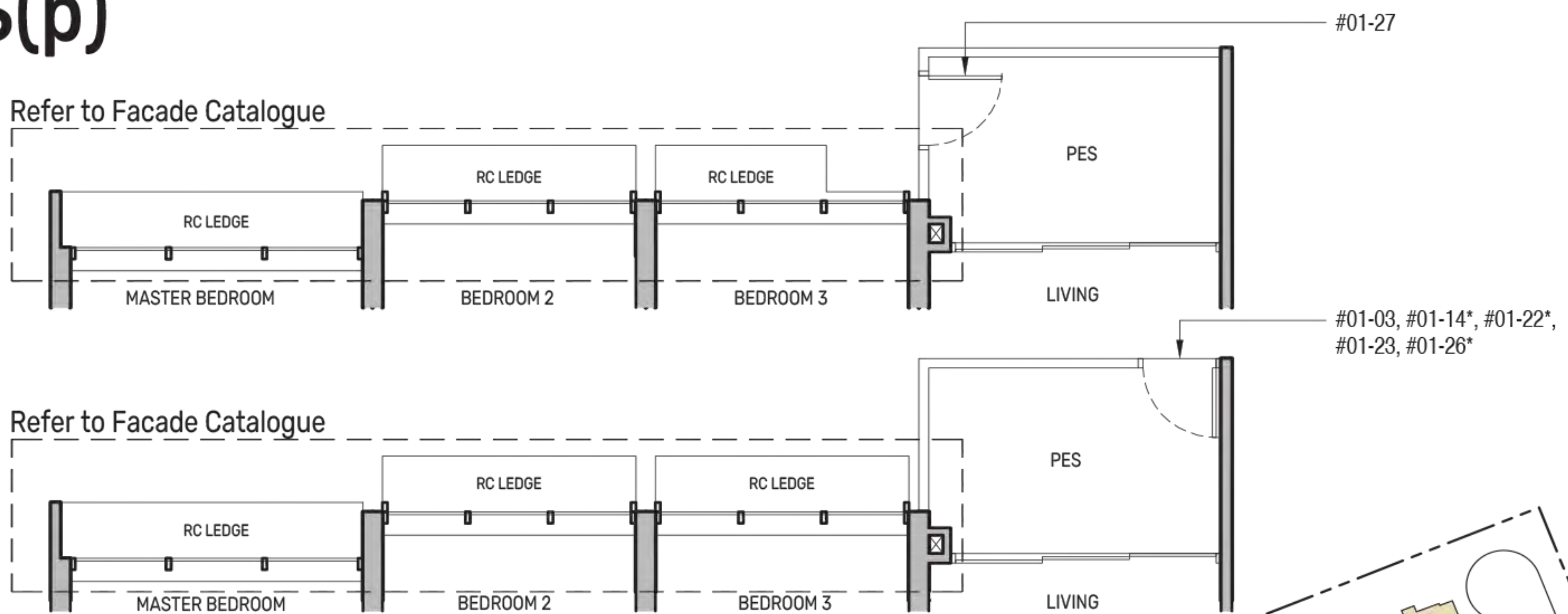
109 sq m / 1173 sq ft

BLK 92 : #01-03

BLK 94 : #01-14\*

BLK 96 : #01-22\*, #01-23

BLK 98 : #01-26\*, #01-27



- PES - Private Enclosed Space
- F - Fridge
- HS - Household Shelter
- RC - Reinforced Concrete
- WD - Washer cum Dryer
- W/D - Washer & Dryer
- W - Washer
- D - Dryer
- DB/ST - Distribution Board/Storage
- WC - Water Closet
- DW - Dishwasher
- AC - Air-Conditioner

Wall not allowed to be hacked or altered

\* Mirror Image

Area includes air-conditioner (AC) ledge, balcony and strata void area where applicable. The plans are subject to change as may be approved by relevant authorities. All floor plans are approximate measurements only and are subject to government re-survey. The balcony shall not be enclosed unless with the approved balcony screen. For an illustration of the approved balcony screen, please refer to the diagram annexed hereto as "Annexure A".





# 4-Bedroom

## Type D1

133 sq m / 1432 sq ft

BLK 92 : #02-02 to #19-02, #02-07\* to #20-07\*

BLK 94 : #02-10 to #19-10

BLK 98 : #02-31\* to #19-31\*

STRATA VOID AREA OF 16 SQ M ABOVE LIVING AND DINING FOR TYPE D1(d)



## Type D1(d)

149 sq m / 1604 sq ft

BLK 92 : #20-02, #21-07\*

BLK 94 : #20-10

BLK 98 : #20-31\*

Including strata void area of 16 sq m above living and dining with 4.4m floor to ceiling height

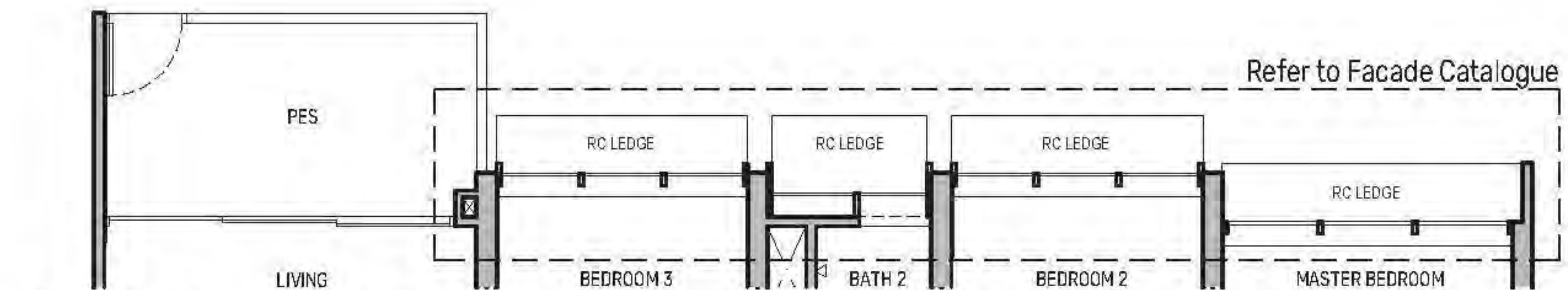
## Type D1(p)

133 sq m / 1432 sq ft

BLK 92 : #01-02, #01-07\*

BLK 94 : #01-10

BLK 98 : #01-31\*



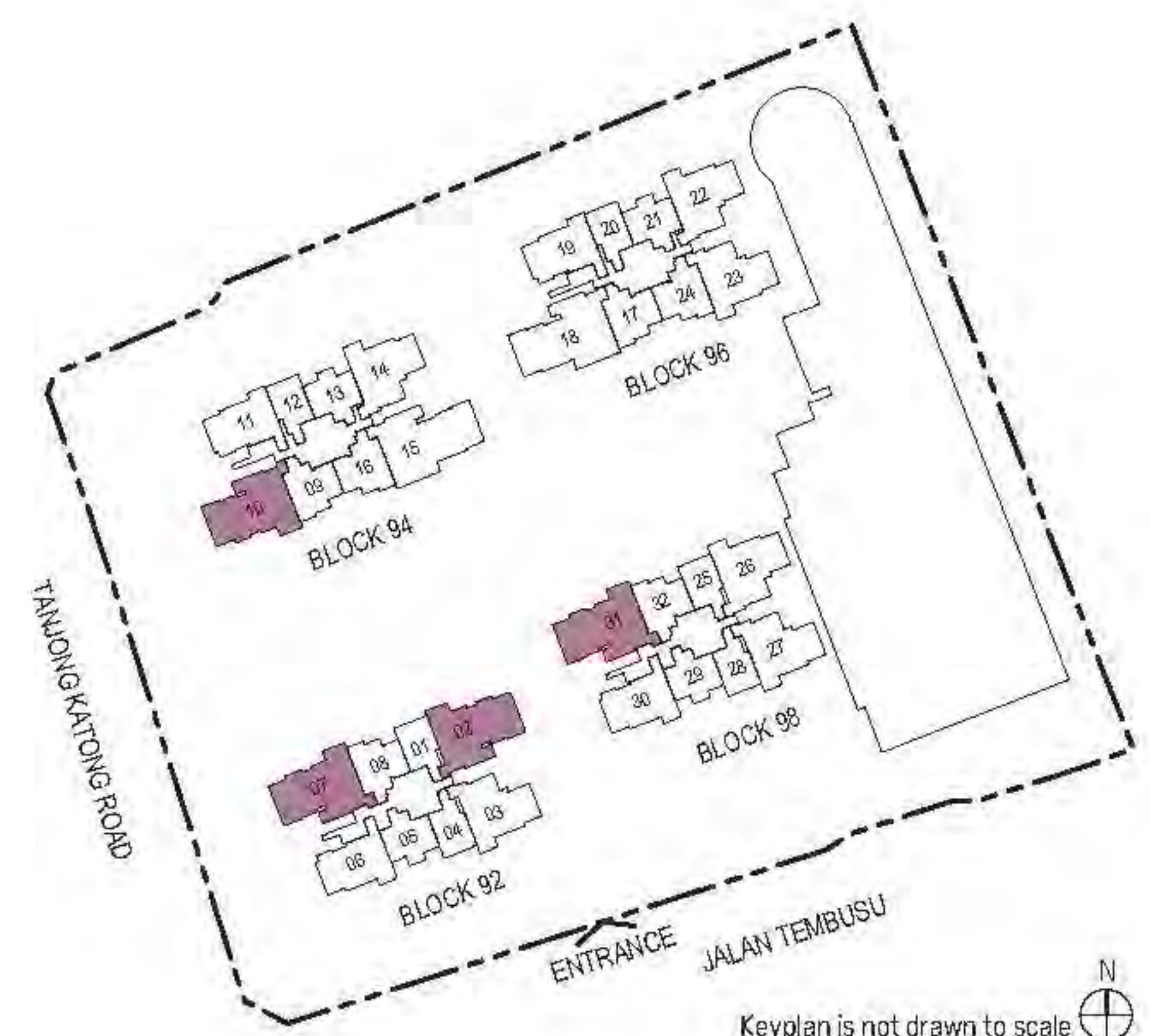
Wall not allowed to be hacked or altered  
\* Mirror Image

PES - Private Enclosed Space  
F - Fridge  
HS - Household Shelter  
RC - Reinforced Concrete

WD - Washer cum Dryer  
W/D - Washer & Dryer  
W - Washer  
D - Dryer

DB/ST - Distribution Board/Storage  
WC - Water Closet  
DW - Dishwasher  
AC - Air-Conditioner

Area includes air-conditioner (AC) ledge, balcony and strata void area where applicable. The plans are subject to change as may be approved by relevant authorities. All floor plans are approximate measurements only and are subject to government re-survey. The balcony shall not be enclosed unless with the approved balcony screen. For an illustration of the approved balcony screen, please refer to the diagram annexed hereto as "Annexure A".



Keyplan is not drawn to scale

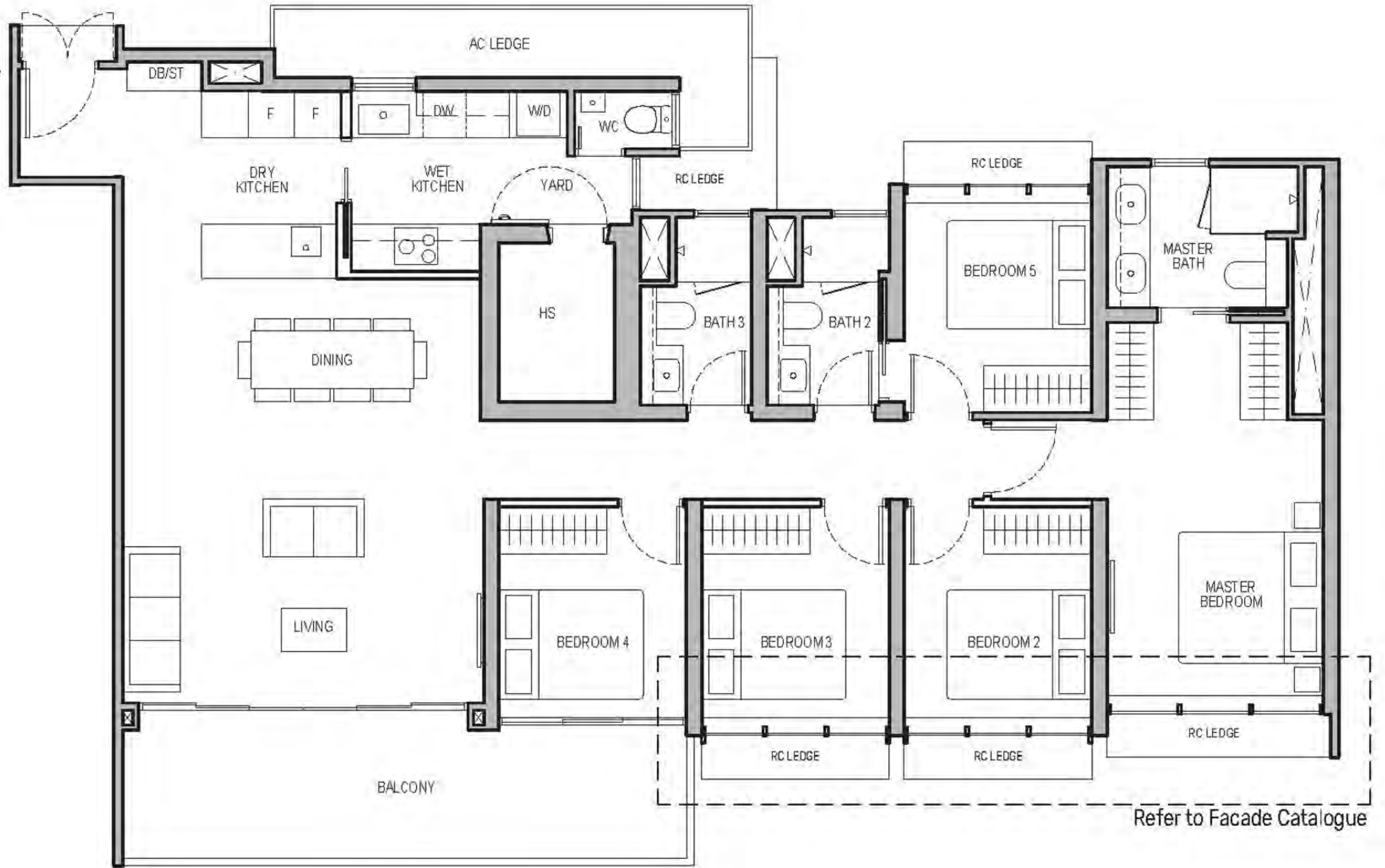


# 5-Bedroom

## Type E1

159 sq m / 1711 sq ft

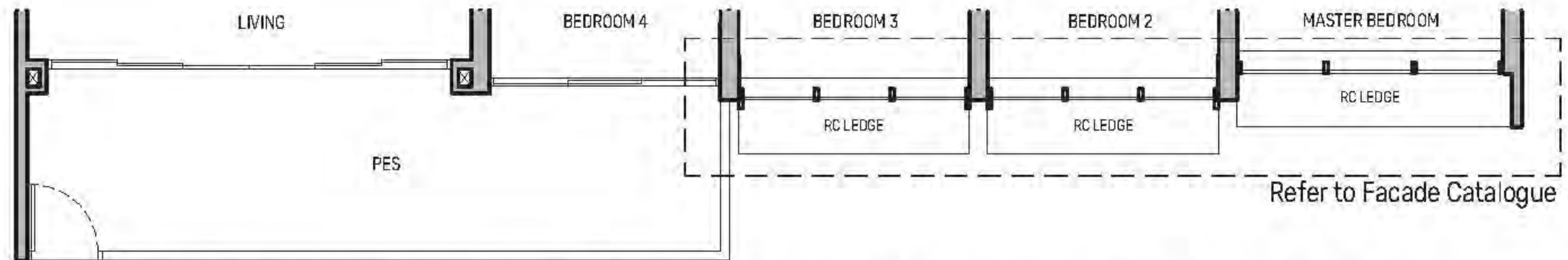
BLK 94 : #02-15 to #19-15  
BLK 96 : #02-18\* to #19-18\*



## Type E1(p)

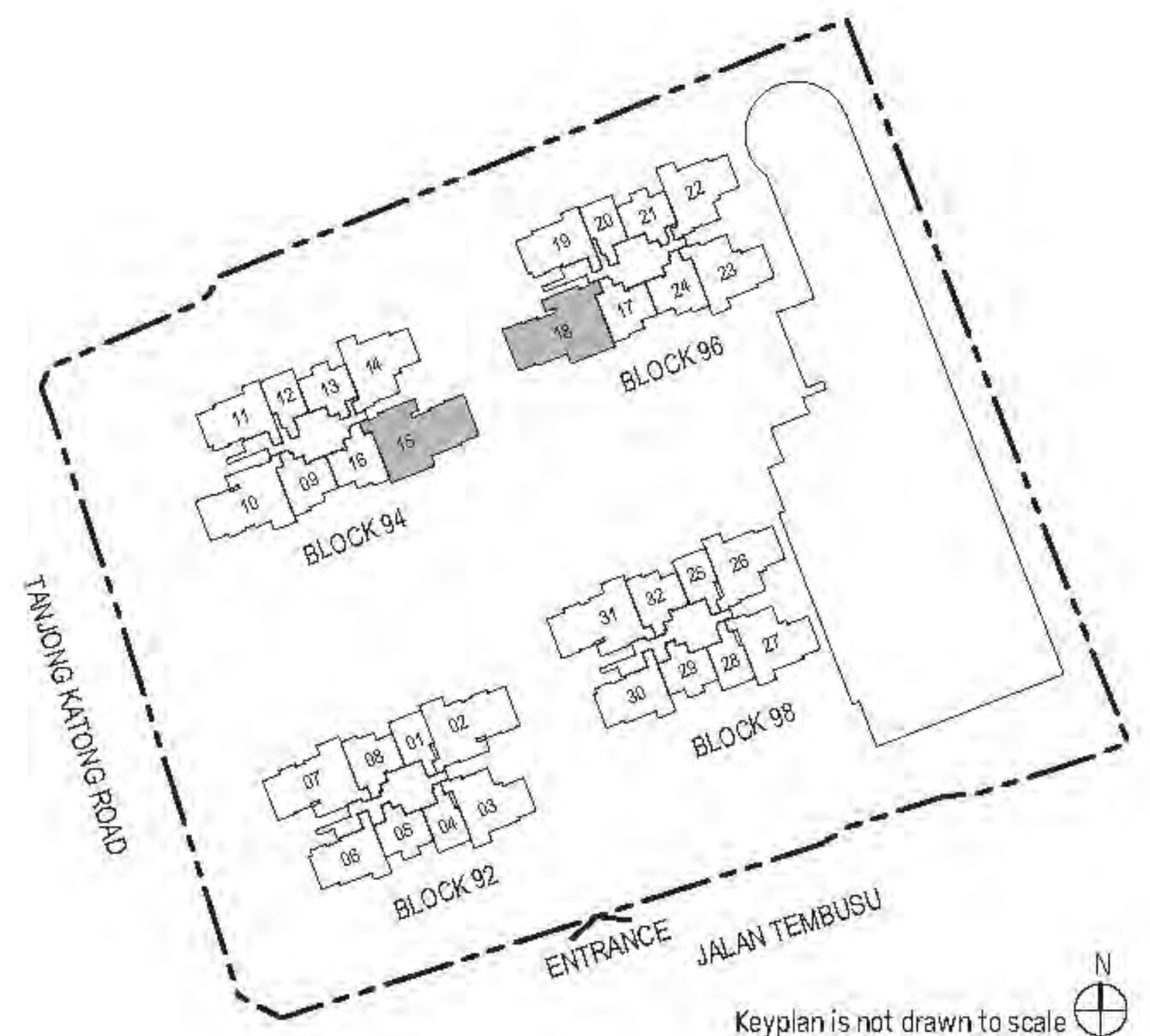
159 sq m / 1711 sq ft

BLK 94 : #01-15  
BLK 96 : #01-18\*



- Wall not allowed to be hacked or altered
- Mirror Image
- PES - Private Enclosed Space
- F - Fridge
- HS - Household Shelter
- RC - Reinforced Concrete
- WD - Washer cum Dryer
- W/D - Washer & Dryer
- W - Washer
- D - Dryer
- DB/ST - Distribution Board/Storage
- WC - Water Closet
- DW - Dishwasher
- AC - Air-Conditioner

Area includes air-conditioner (AC) ledge, balcony and strata void area where applicable. The plans are subject to change as may be approved by relevant authorities. All floor plans are approximate measurements only and are subject to government re-survey. The balcony shall not be enclosed unless with the approved balcony screen. For an illustration of the approved balcony screen, please refer to the diagram annexed hereto as "Annexure A".





# Penthouse (5-Bedroom)

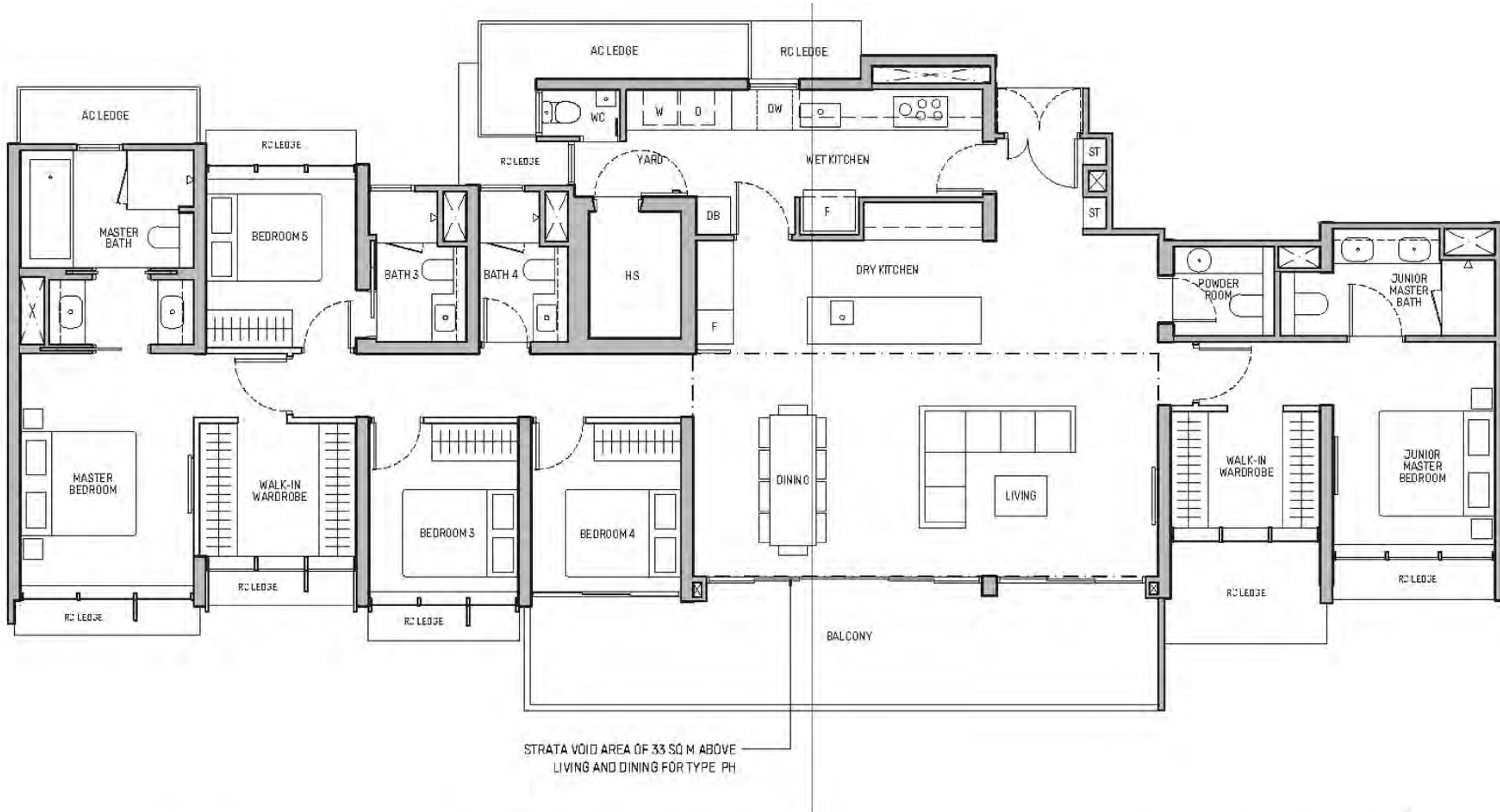
## Type PH

250 sq m / 2691 sq ft

BLK 94 : #20-15\*

BLK 96 : #20-18

Including strata void area of 33 sq m above living and dining with 4.4m floor to ceiling height



Wall not allowed to be hacked or altered  
Mirror Image

- PES - Private Enclosed Space
- F - Fridge
- HS - Household Shelter
- RC - Reinforced Concrete
- WD - Washer cum Dryer
- W/D - Washer & Dryer
- W - Washer
- D - Dryer
- DB/ST - Distribution Board/Storage
- WC - Water Closet
- DW - Dishwasher
- AC - Air-Conditioner

Area includes air-conditioner (AC) ledge, balcony and strata void area where applicable. The plans are subject to change as may be approved by relevant authorities. All floor plans are approximate measurements only and are subject to government re-survey. The balcony shall not be enclosed unless with the approved balcony screen. For an illustration of the approved balcony screen, please refer to the diagram annexed hereto as "Annexure A".

