

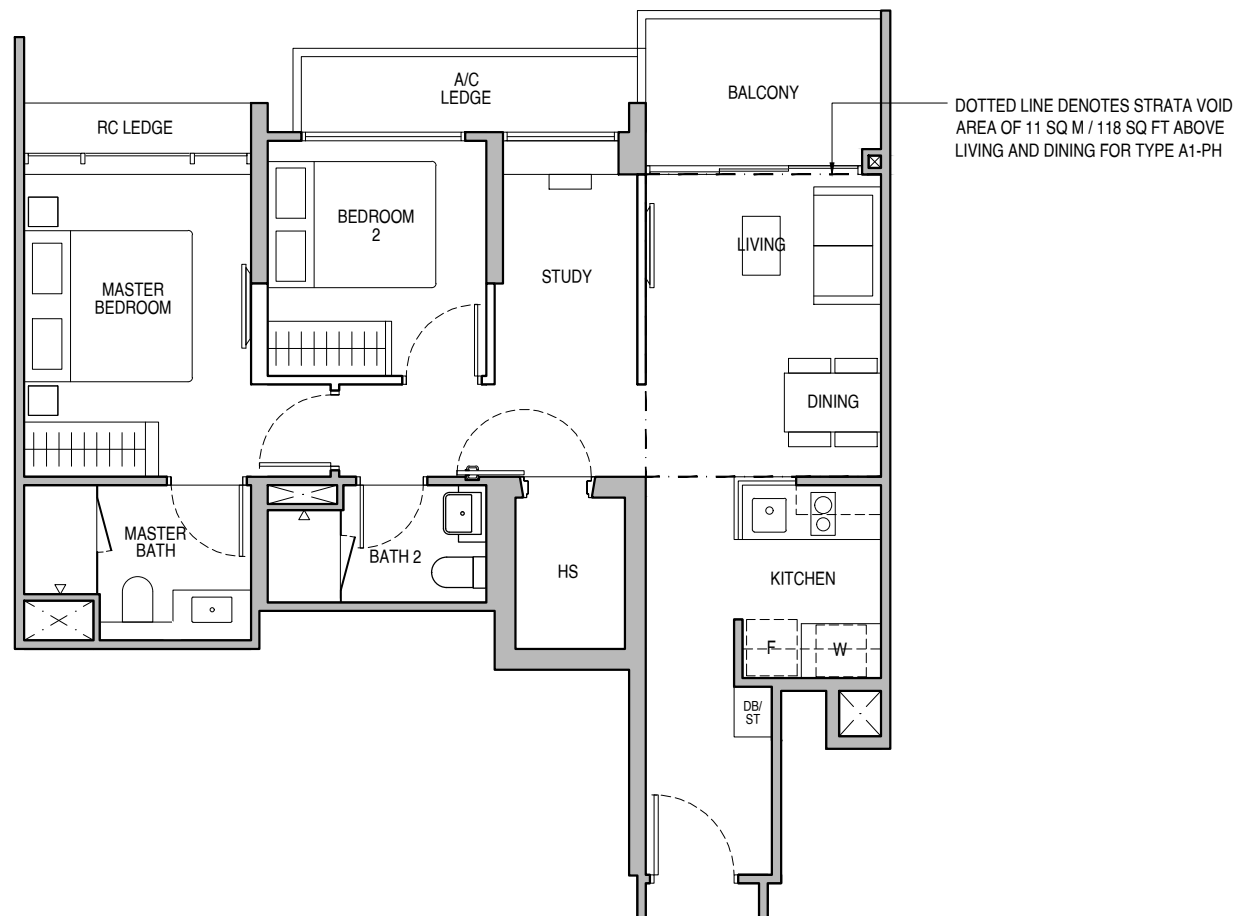
# 2-BEDROOM + STUDY

## Type A1

75 sq m / 807 sq ft  
BLK 55 : #04-09 to #13-09

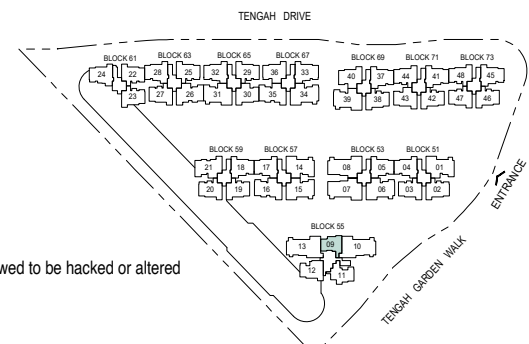
## Type A1-PH

86 sq m / 926 sq ft  
BLK 55 : #14-09  
Including strata void area of 11 sq m / 118 sq ft above living and dining with 4.5m floor to ceiling height



- PES - Private Enclosed Space
- W - Washer/Dryer (not included)
- WC - Water Closet
- HS - Household Shelter
- DB/ST - Distribution Board/Storage
- RC - Reinforced Concrete
- F - Fridge (not included)
- A/C - Air-Conditioner
- Wall not allowed to be hacked or altered
- Mirror Image

Area includes air-conditioner (A/C) ledge, balcony and strata void area where applicable. The plans are subject to change as may be approved by relevant authorities. All floor plans are approximate measurements only and are subject to government re-survey. The balcony shall not be enclosed unless with the approved balcony screen. For an illustration of the approved balcony screen, please refer to the diagram annexed hereto as "Annexure A".



Keyplan is not drawn to scale

# 3-BEDROOM DELUXE

## Type B1

87 sq m / 936 sq ft

BLK 51 : #02-02\* to #13-02\*, #02-03 to #13-03  
 BLK 59 : #06-19\* to #13-19\*  
 BLK 61 : #02-22 to #13-22, #06-23\* to #13-23\*  
 BLK 63 : #02-25 to #13-25  
 BLK 65 : #02-29 to #13-29  
 BLK 69 : #02-38\* to #13-38\*  
 BLK 71 : #02-42\* to #13-42\*, #02-44\* to #13-44\*  
 BLK 73 : #02-46\* to #13-46\*, #02-47 to #13-47, #02-48\* to #13-48\*

## Type B1-P

87 sq m / 936 sq ft

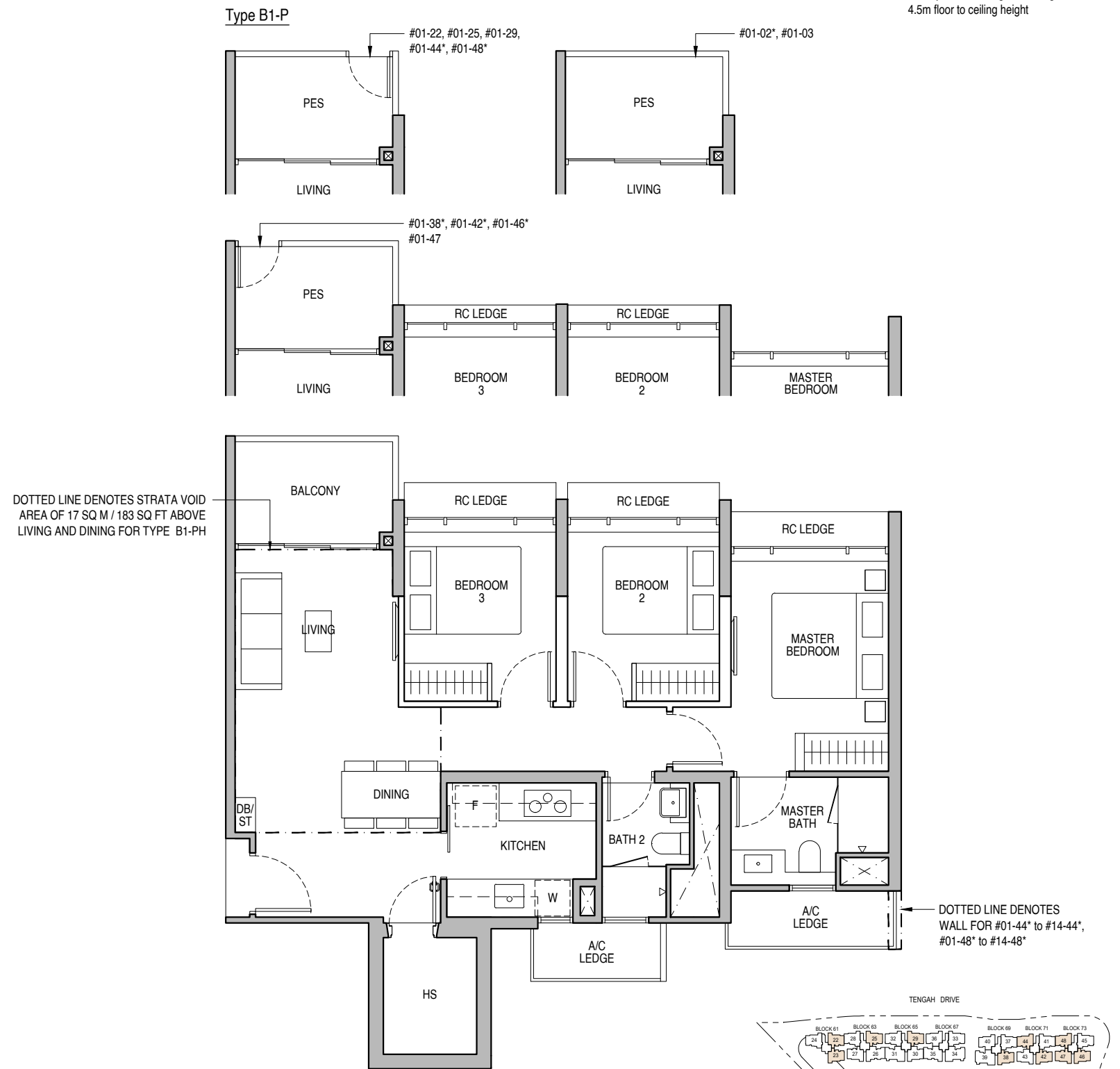
BLK 51 : #01-02\*, #01-03  
 BLK 61 : #01-22  
 BLK 63 : #01-25  
 BLK 65 : #01-29  
 BLK 69 : #01-38\*  
 BLK 71 : #01-42\*, #01-44\*  
 BLK 73 : #01-46\*, #01-47, #01-48\*

## Type B1-PH

104 sq m / 1119 sq ft

BLK 51 : #14-02\*, #14-03  
 BLK 59 : #14-19\*  
 BLK 61 : #14-22, #14-23\*  
 BLK 63 : #14-25  
 BLK 65 : #14-29  
 BLK 69 : #14-38\*  
 BLK 71 : #14-42\*, #14-44\*  
 BLK 73 : #14-46\*, #14-47, #14-48\*

Including strata void area of 17 sq m / 183 sq ft above living and dining with 4.5m floor to ceiling height



PES - Private Enclosed Space    WC - Water Closet    DB/ST - Distribution Board/Storage    F - Fridge (not included)    Wall not allowed to be hacked or altered  
 W - Washer/Dryer (not included)    HS - Household Shelter    RC - Reinforced Concrete    A/C - Air-Conditioner    \* Mirror Image

Area includes air-conditioner (A/C) ledge, balcony and strata void area where applicable. The plans are subject to change as may be approved by relevant authorities. All floor plans are approximate measurements only and are subject to government re-survey. The balcony shall not be enclosed unless with the approved balcony screen. For an illustration of the approved balcony screen, please refer to the diagram annexed hereto as "Annexure A".

Keyplan is not drawn to scale

# 3-BEDROOM DELUXE

## Type B2

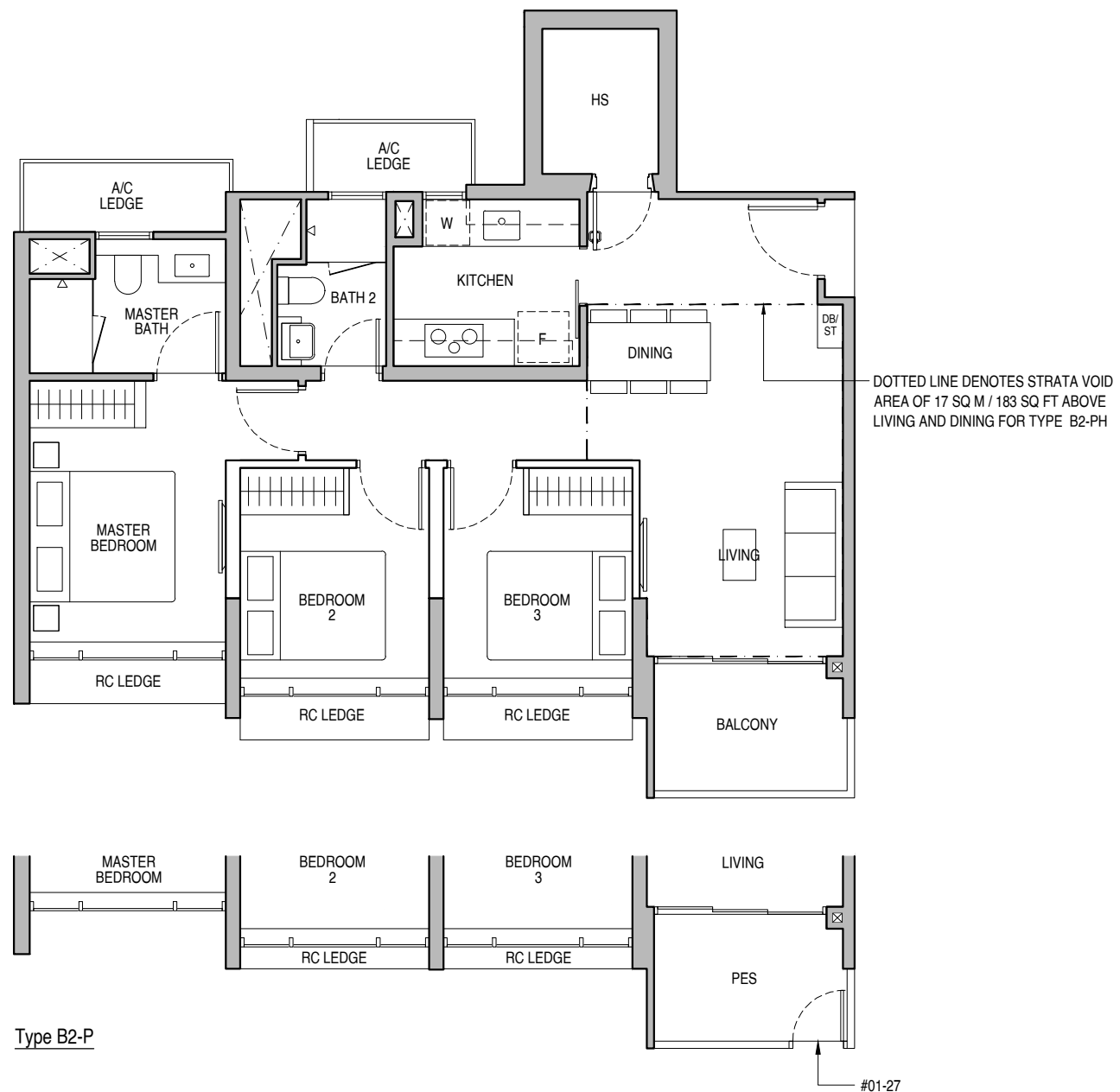
87 sq m / 936 sq ft  
 BLK 59 : #06-20 to #13-20  
 BLK 63 : #02-27 to #13-27

## Type B2-P

87 sq m / 936 sq ft  
 BLK 63 : #01-27

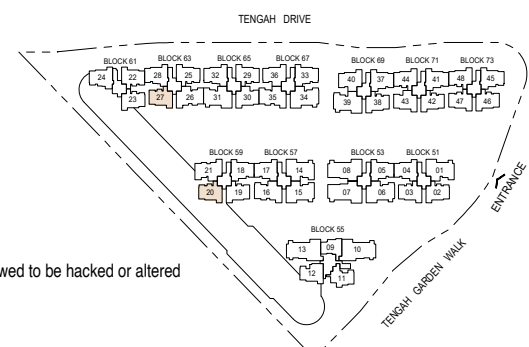
## Type B2-PH

104 sq m / 1119 sq ft  
 BLK 59 : #14-20  
 BLK 63 : #14-27  
 Including strata void area of 17 sq m /  
 183 sq ft above living and dining with  
 4.5m floor to ceiling height



- PES - Private Enclosed Space
- W - Washer/Dryer (not included)
- WC - Water Closet
- HS - Household Shelter
- DB/ST - Distribution Board/Storage
- RC - Reinforced Concrete
- F - Fridge (not included)
- A/C - Air-Conditioner
- Wall not allowed to be hacked or altered
- Mirror Image

Area includes air-conditioner (A/C) ledge, balcony and strata void area where applicable. The plans are subject to change as may be approved by relevant authorities. All floor plans are approximate measurements only and are subject to government re-survey. The balcony shall not be enclosed unless with the approved balcony screen. For an illustration of the approved balcony screen, please refer to the diagram annexed hereto as "Annexure A".



# 3-BEDROOM DELUXE

## Type B3

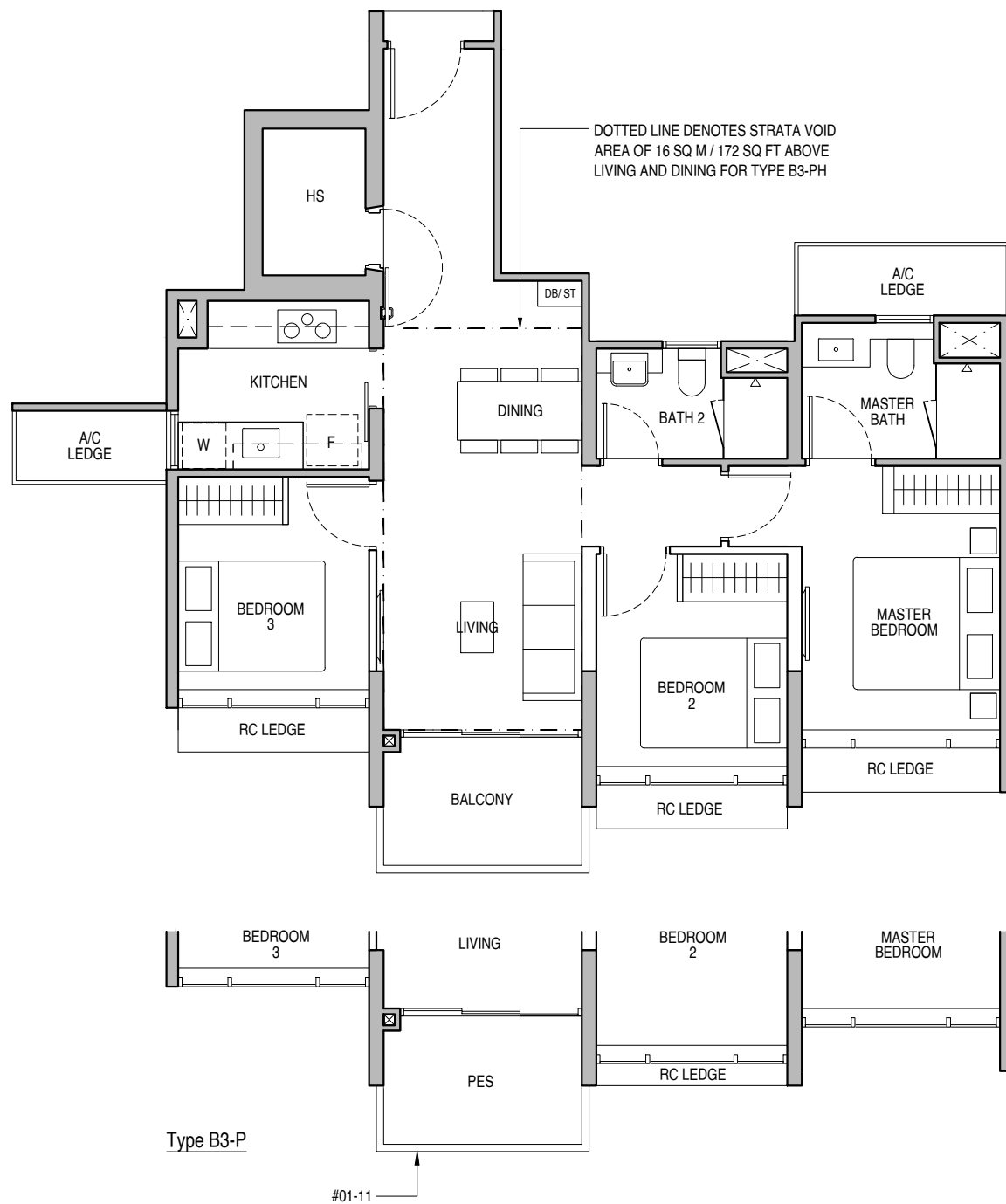
87 sq m / 936 sq ft  
BLK 55 : #02-11 to #13-11

## Type B3-P

87 sq m / 936 sq ft  
BLK 55 : #01-11

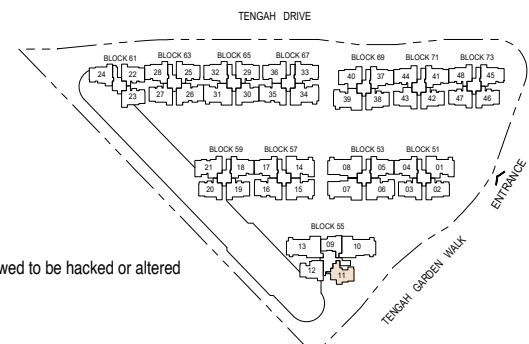
## Type B3-PH

103 sq m / 1109 sq ft  
BLK 55 : #14-11  
Including strata void area of 16 sq m / 172 sq ft above living and dining with 4.5m floor to ceiling height



- PES - Private Enclosed Space
- W - Washer/Dryer (not included)
- WC - Water Closet
- HS - Household Shelter
- DB/ST - Distribution Board/Storage
- RC - Reinforced Concrete
- F - Fridge (not included)
- A/C - Air-Conditioner
- Wall not allowed to be hacked or altered
- Mirror Image

Area includes air-conditioner (A/C) ledge, balcony and strata void area where applicable. The plans are subject to change as may be approved by relevant authorities. All floor plans are approximate measurements only and are subject to government re-survey. The balcony shall not be enclosed unless with the approved balcony screen. For an illustration of the approved balcony screen, please refer to the diagram annexed hereto as "Annexure A".



Keyplan is not drawn to scale

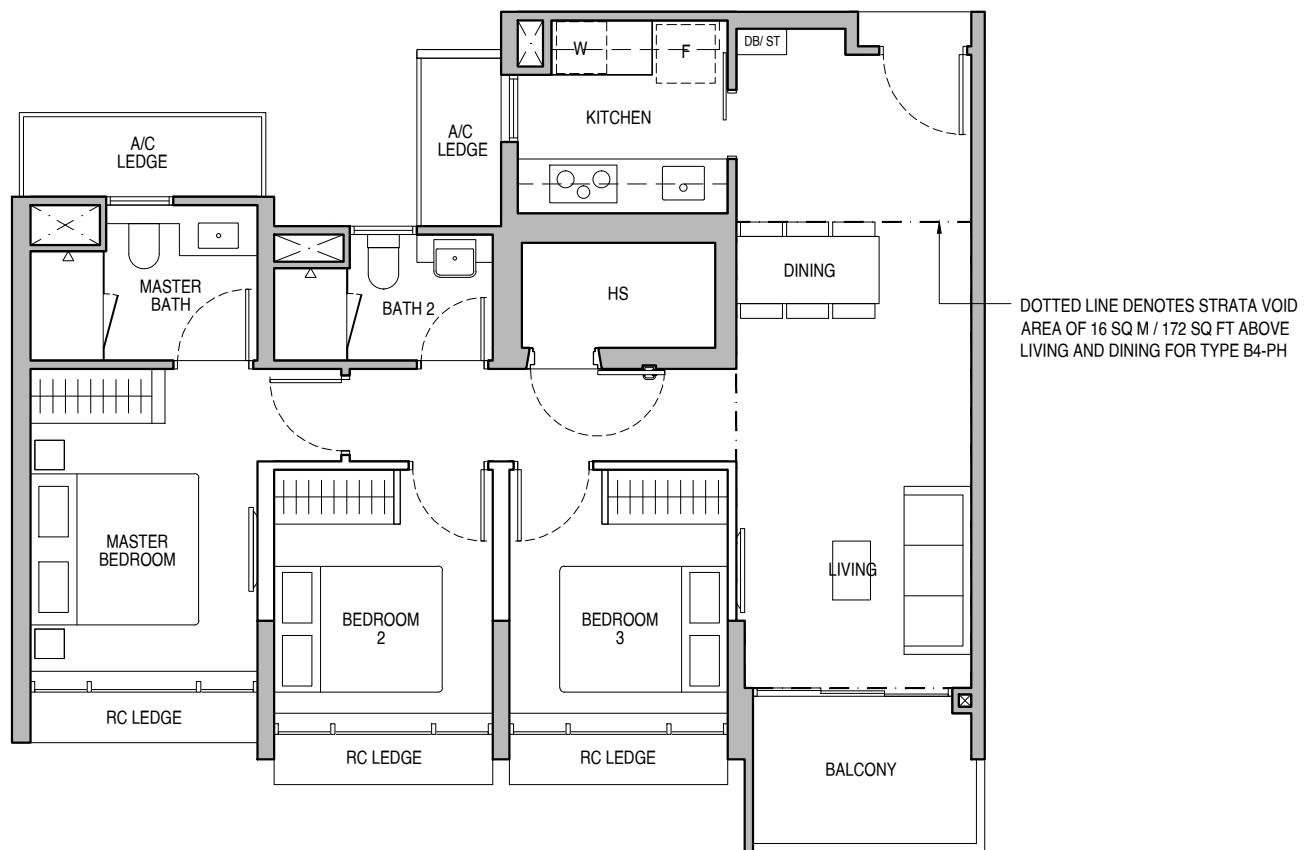
# 3-BEDROOM DELUXE

## Type B4

90 sq m / 969 sq ft  
BLK 55 : #06-12 to #13-12

## Type B4-PH

106 sq m / 1141 sq ft  
BLK 55 : #14-12  
Including strata void area of 16 sq m / 172 sq ft above living and dining with 4.5m floor to ceiling height

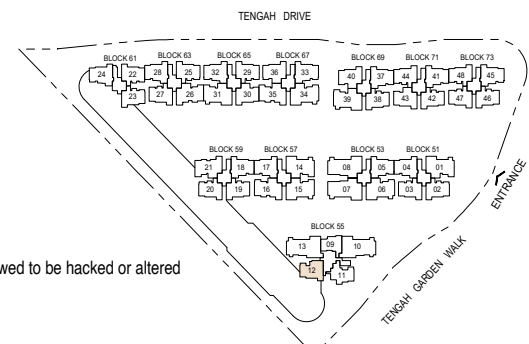


DOTTED LINE DENOTES STRATA VOID AREA OF 16 SQ M / 172 SQ FT ABOVE LIVING AND DINING FOR TYPE B4-PH



- PES - Private Enclosed Space
- W - Washer/Dryer (not included)
- WC - Water Closet
- HS - Household Shelter
- DB/ST - Distribution Board/Storage
- RC - Reinforced Concrete
- F - Fridge (not included)
- A/C - Air-Conditioner
- Wall not allowed to be hacked or altered
- Mirror Image

Area includes air-conditioner (A/C) ledge, balcony and strata void area where applicable. The plans are subject to change as may be approved by relevant authorities. All floor plans are approximate measurements only and are subject to government re-survey. The balcony shall not be enclosed unless with the approved balcony screen. For an illustration of the approved balcony screen, please refer to the diagram annexed hereto as "Annexure A".



Keyplan is not drawn to scale

# 3-BEDROOM PREMIUM

## Type B5

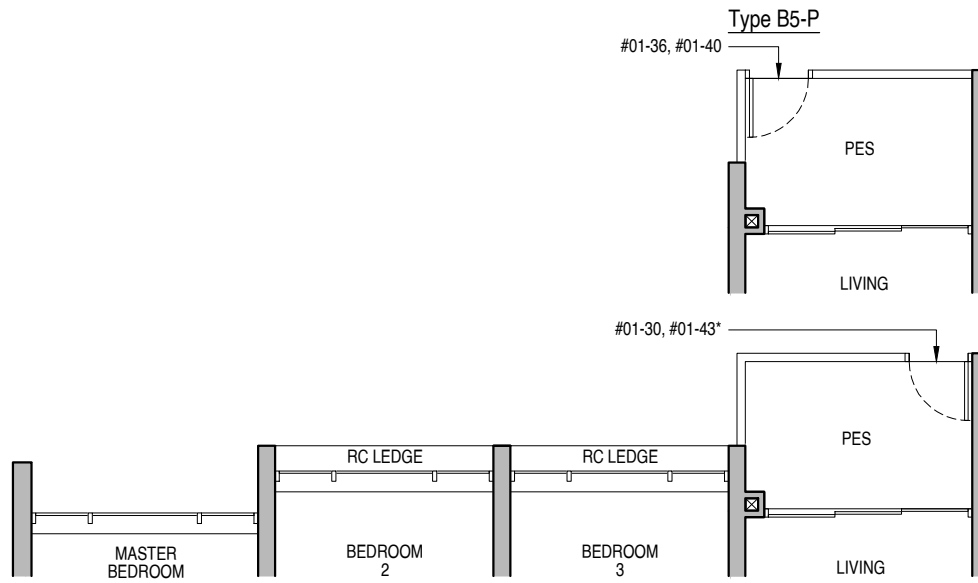
93 sq m / 1001 sq ft  
 BLK 65 : #02-30 to #13-30  
 BLK 67 : #02-36 to #13-36  
 BLK 69 : #02-40 to #13-40  
 BLK 71 : #02-43\* to #13-43\*

## Type B5-P

93 sq m / 1001 sq ft  
 BLK 65 : #01-30  
 BLK 67 : #01-36  
 BLK 69 : #01-40  
 BLK 71 : #01-43\*

## Type B5-PH

110 sq m / 1184 sq ft  
 BLK 65 : #14-30  
 BLK 67 : #14-36  
 BLK 69 : #14-40  
 BLK 63 : #14-43\*  
 Including strata void area of 17 sq m / 183 sq ft above living and dining with 4.5m floor to ceiling height



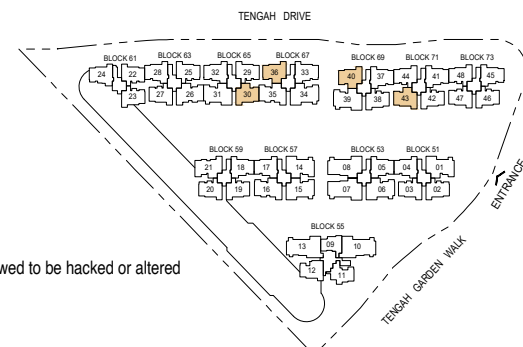
DOTTED LINE DENOTES STRATA VOID AREA OF 17 SQ M / 183 SQ FT ABOVE LIVING AND DINING FOR TYPE B5-PH

DOTTED LINE DENOTES WALL FOR #01-30 to #14-30



- PES - Private Enclosed Space
- W - Washer/Dryer (not included)
- WC - Water Closet
- HS - Household Shelter
- DB/ST - Distribution Board/Storage
- RC - Reinforced Concrete
- F - Fridge (not included)
- A/C - Air-Conditioner
- Wall not allowed to be hacked or altered
- \* Mirror Image

Area includes air-conditioner (A/C) ledge, balcony and strata void area where applicable. The plans are subject to change as may be approved by relevant authorities. All floor plans are approximate measurements only and are subject to government re-survey. The balcony shall not be enclosed unless with the approved balcony screen. For an illustration of the approved balcony screen, please refer to the diagram annexed hereto as "Annexure A".



Keyplan is not drawn to scale

# 3-BEDROOM PREMIUM

## Type B6

94 sq m / 1012 sq ft

BLK 51 : #02-04\* to #13-04\*  
 BLK 53 : #02-05 to #13-05  
 BLK 57 : #02-17\* to #13-17\*  
 BLK 59 : #02-18 to #13-18  
 BLK 63 : #02-28\* to #13-28\*  
 BLK 65 : #02-32\* to #13-32\*  
 BLK 67 : #02-33 to #13-33  
 BLK 69 : #02-37 to #13-37  
 BLK 71 : #02-41 to #13-41  
 BLK 73 : #02-45 to #13-45

## Type B6-P

94 sq m / 1012 sq ft

BLK 51 : #01-04\*  
 BLK 53 : #01-05  
 BLK 57 : #01-17\*  
 BLK 59 : #01-18  
 BLK 63 : #01-28\*  
 BLK 65 : #01-32\*  
 BLK 67 : #01-33  
 BLK 69 : #01-37  
 BLK 71 : #01-41  
 BLK 73 : #01-45

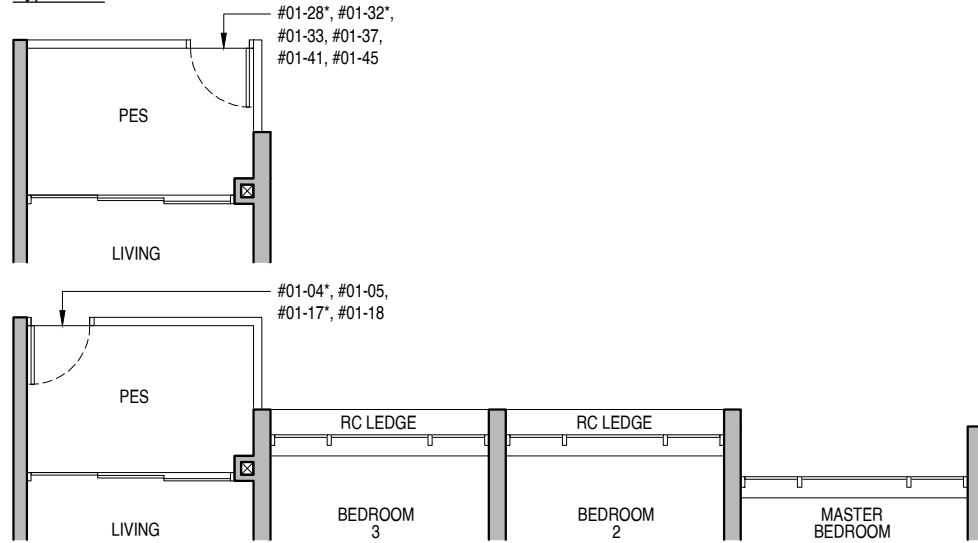
## Type B6-PH

110 sq m / 1184 sq ft

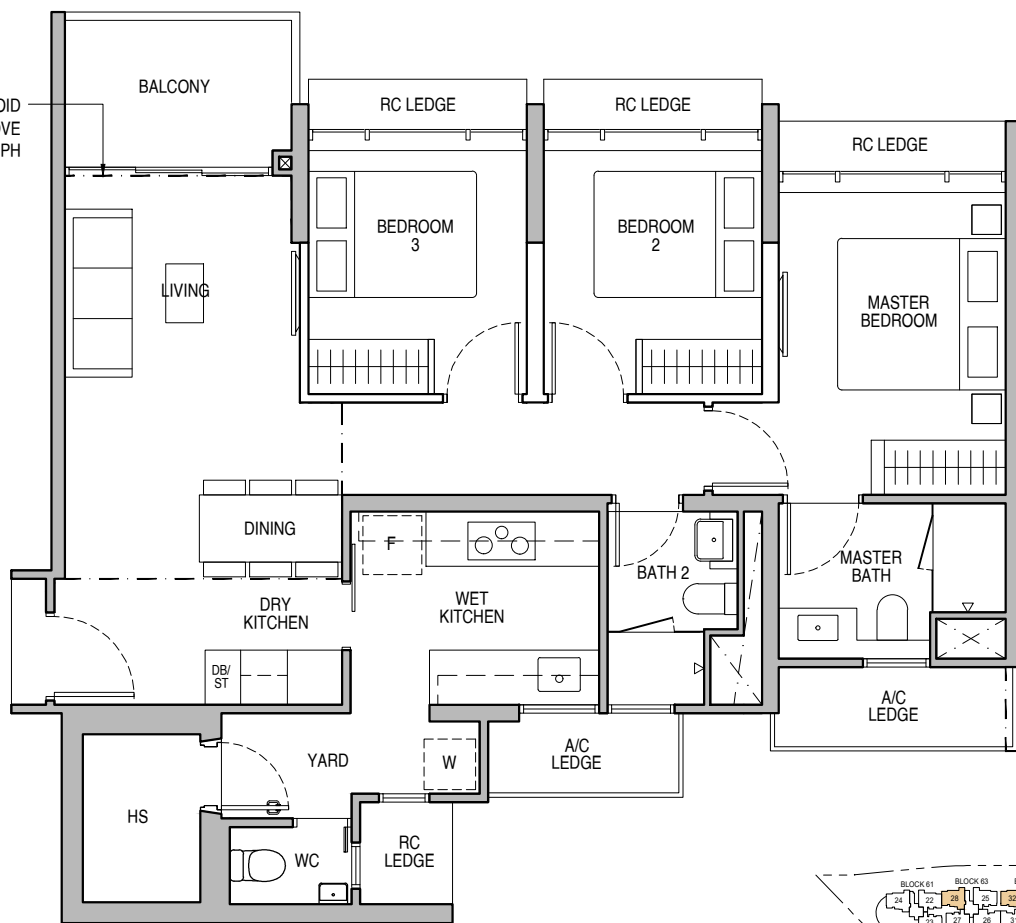
BLK 51 : #14-04\*  
 BLK 53 : #14-05  
 BLK 57 : #14-17\*  
 BLK 59 : #14-18  
 BLK 63 : #14-28\*  
 BLK 65 : #14-32\*  
 BLK 67 : #14-33  
 BLK 69 : #14-37  
 BLK 71 : #14-41  
 BLK 73 : #14-45

Including strata void area of 16 sq m / 172 sq ft above living and dining with 4.5m floor to ceiling height

Type B6-P



DOTTED LINE DENOTES STRATA VOID AREA OF 16 SQ M / 172 SQ FT ABOVE LIVING AND DINING FOR TYPE B6-PH

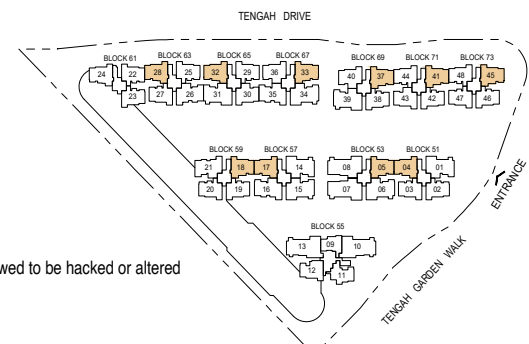


DOTTED LINE DENOTES WALL FOR #01-04\* to #14-04\*, #01-05 to #14-05, #01-17\* to #14-17\*, #01-18 to #14-18, #01-37 to #14-37, #01-28\* to #14-28\*, #01-41 to #14-41



PES - Private Enclosed Space    WC - Water Closet    DB/ST - Distribution Board/Storage    F - Fridge (not included)    Wall not allowed to be hacked or altered  
 W - Washer/Dryer (not included)    HS - Household Shelter    RC - Reinforced Concrete    A/C - Air-Conditioner    \* Mirror Image

Area includes air-conditioner (A/C) ledge, balcony and strata void area where applicable. The plans are subject to change as may be approved by relevant authorities. All floor plans are approximate measurements only and are subject to government re-survey. The balcony shall not be enclosed unless with the approved balcony screen. For an illustration of the approved balcony screen, please refer to the diagram annexed hereto as "Annexure A".



Keyplan is not drawn to scale

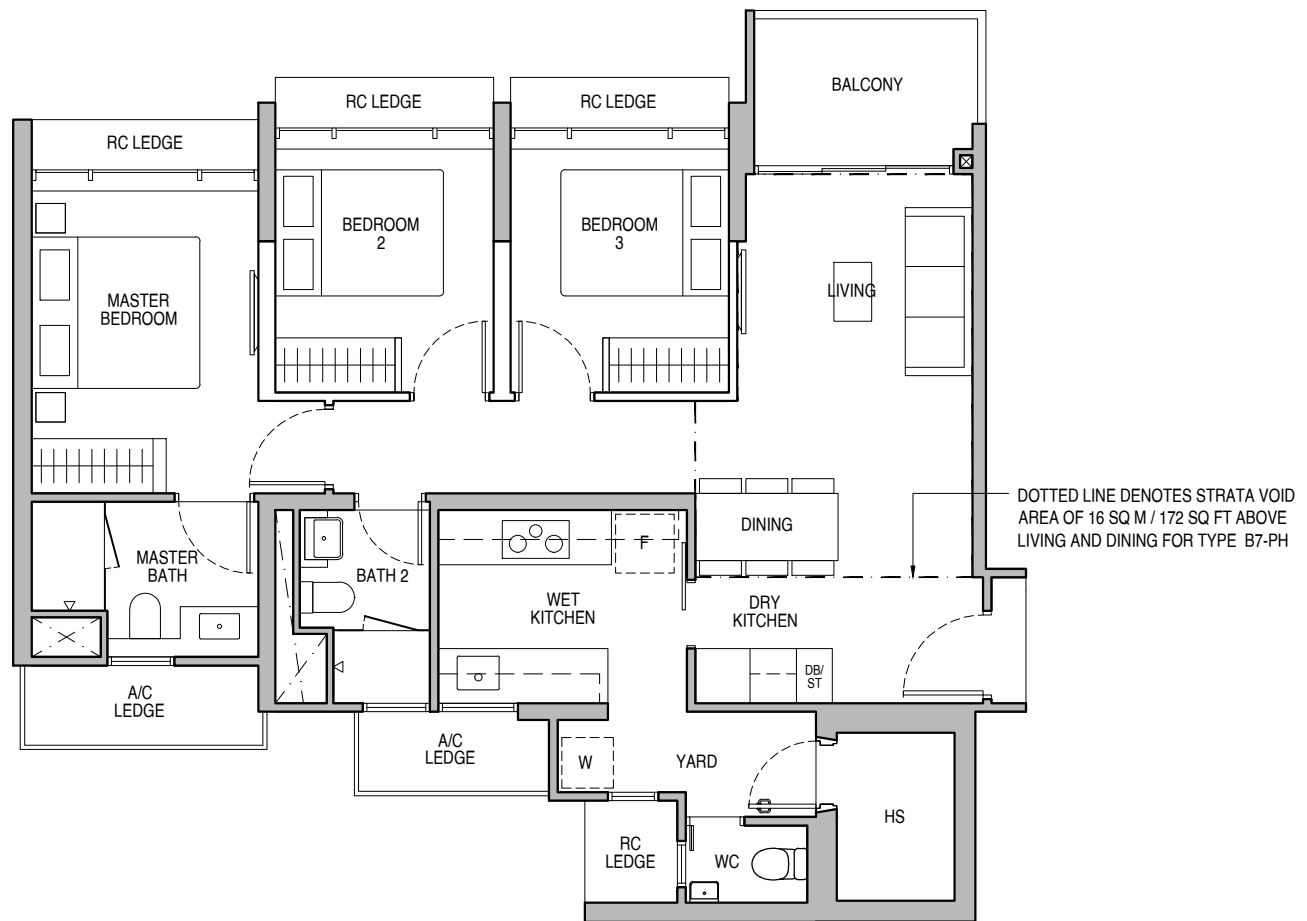
# 3-BEDROOM PREMIUM

## Type B7

94 sq m / 1012 sq ft  
BLK 61 : #06-24 to #13-24

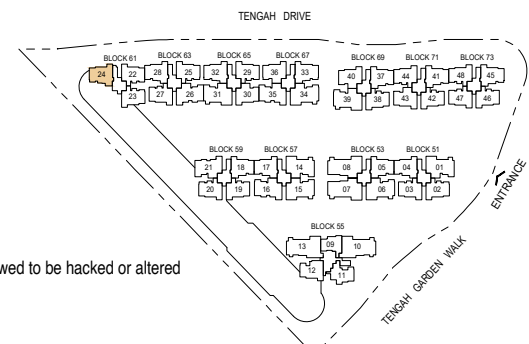
## Type B7-PH

110 sq m / 1184 sq ft  
BLK 61 : #14-24  
Including strata void area of 16 sq m / 172 sq ft above living and dining with 4.5m floor to ceiling height



- PES - Private Enclosed Space
- W - Washer/Dryer (not included)
- WC - Water Closet
- HS - Household Shelter
- DB/ST - Distribution Board/Storage
- RC - Reinforced Concrete
- F - Fridge (not included)
- A/C - Air-Conditioner
- Wall not allowed to be hacked or altered
- Mirror Image

Area includes air-conditioner (A/C) ledge, balcony and strata void area where applicable. The plans are subject to change as may be approved by relevant authorities. All floor plans are approximate measurements only and are subject to government re-survey. The balcony shall not be enclosed unless with the approved balcony screen. For an illustration of the approved balcony screen, please refer to the diagram annexed hereto as "Annexure A".



Keyplan is not drawn to scale



# 4-BEDROOM DELUXE

## Type C1

110 sq m / 1184 sq ft

BLK 59 : #06-21 to #13-21  
 BLK 63 : #02-26 to #13-26  
 BLK 67 : #02-35\* to #13-35\*

## Type C1-P

110 sq m / 1184 sq ft

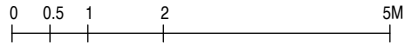
BLK 63 : #01-26  
 BLK 67 : #01-35\*

## Type C1-PH

128 sq m / 1378 sq ft

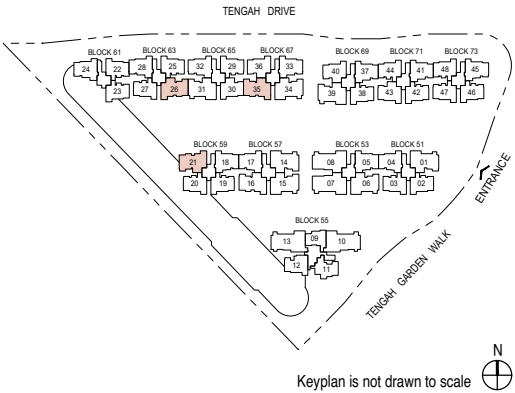
BLK 59 : #14-21  
 BLK 63 : #14-26  
 BLK 67 : #14-35\*

Including strata void area of 18 sq m /  
 194 sq ft above living and dining with  
 4.5m floor to ceiling height



- Wall not allowed to be hacked or altered
- \* Mirror Image
- P.E.S. - Private Enclosed Space
- W - Washer/Dryer (not included)
- WC - Water Closet
- HS - Household Shelter
- DB/ST - Distribution Board/Storage
- RC - Reinforced Concrete
- F - Fridge (not included)
- A/C - Air-Conditioner

Area includes air-conditioner (A/C) ledge, balcony and strata void area where applicable. The plans are subject to change as may be approved by relevant authorities. All floor plans are approximate measurements only and are subject to government re-survey. The balcony shall not be enclosed unless with the approved balcony screen. For an illustration of the approved balcony screen, please refer to the diagram annexed hereto as "Annexure A".



# 4-BEDROOM DELUXE

## Type C2

110 sq m / 1184 sq ft

BLK 57 : #02-16 to #13-16

## Type C2-P

110 sq m / 1184 sq ft

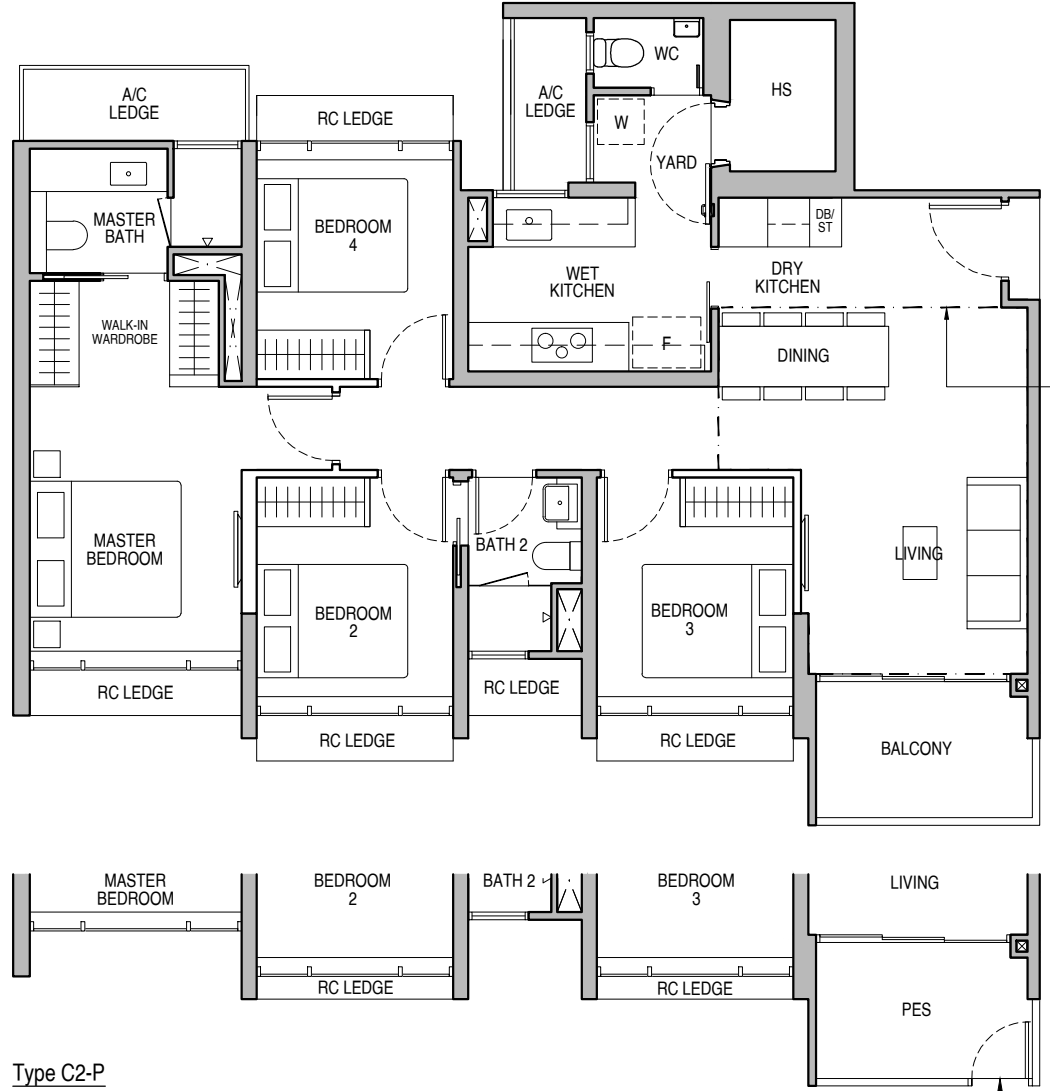
BLK 57 : #01-16

## Type C2-PH

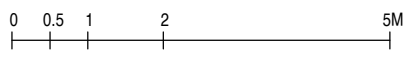
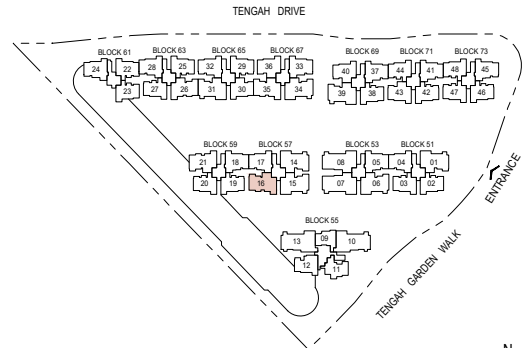
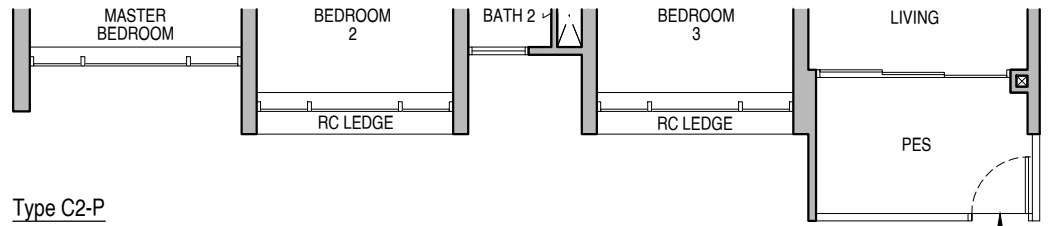
128 sq m / 1378 sq ft

BLK 57 : #14-16

Including strata void area of 18 sq m / 194 sq ft above living and dining with 4.5m floor to ceiling height



DOTTED LINE DENOTES STRATA VOID AREA OF 18 SQ M / 194 SQ FT ABOVE LIVING AND DINING FOR TYPE C2-PH



- Wall not allowed to be hacked or altered
- \* Mirror Image
- P.E.S. - Private Enclosed Space
- W - Washer/Dryer (not included)
- WC - Water Closet
- HS - Household Shelter
- DB/ST - Distribution Board/Storage
- RC - Reinforced Concrete
- F - Fridge (not included)
- A/C - Air-Conditioner

Area includes air-conditioner (A/C) ledge, balcony and strata void area where applicable. The plans are subject to change as may be approved by relevant authorities. All floor plans are approximate measurements only and are subject to government re-survey. The balcony shall not be enclosed unless with the approved balcony screen. For an illustration of the approved balcony screen, please refer to the diagram annexed hereto as "Annexure A".

Keyplan is not drawn to scale

# 4-BEDROOM PREMIUM

## Type C3a

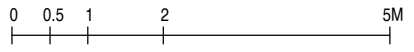
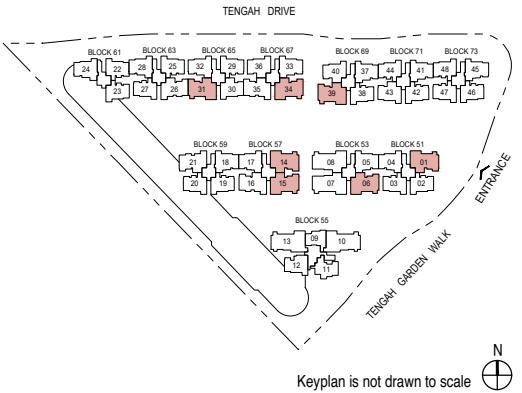
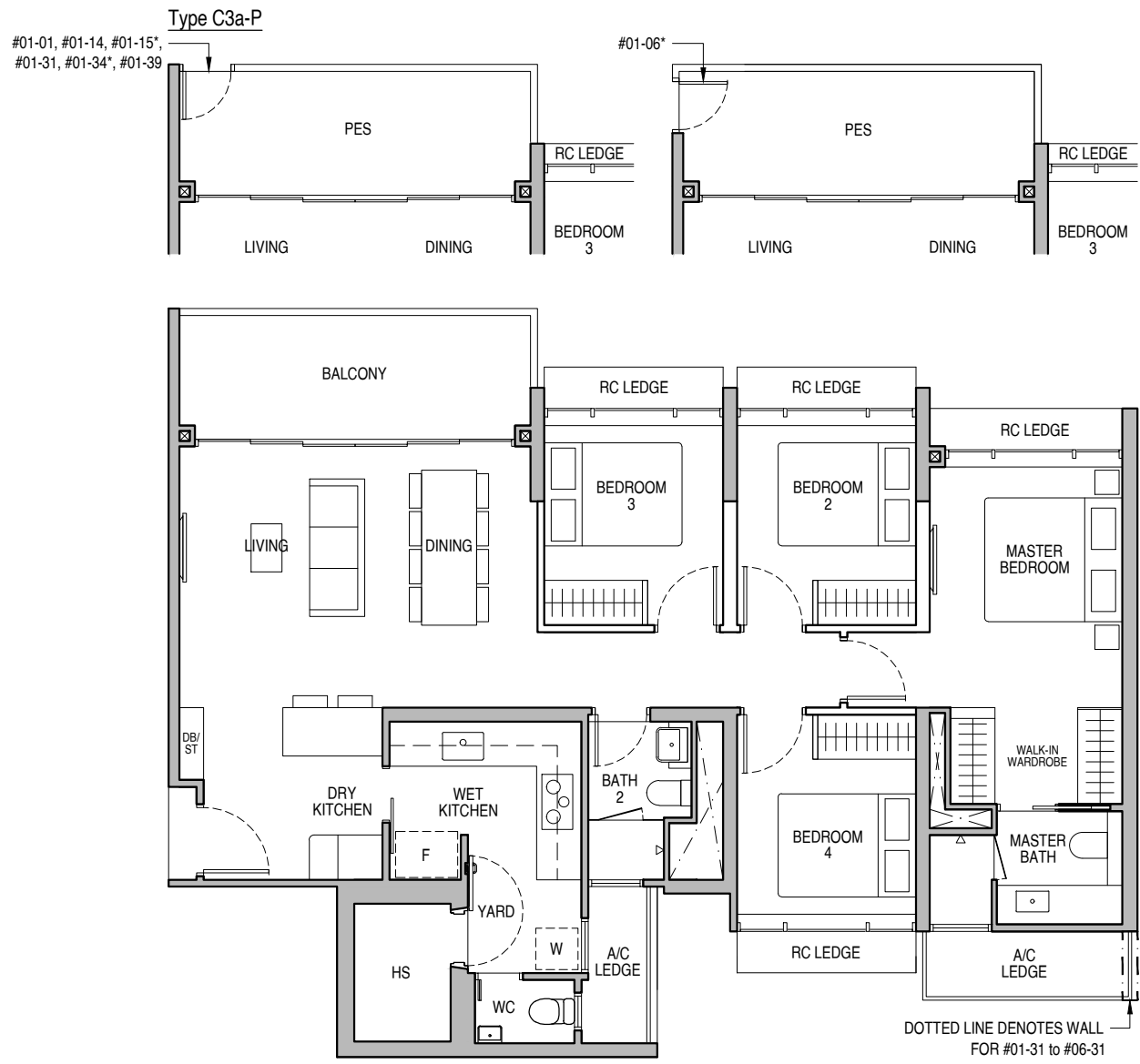
117 sq m / 1259 sq ft

- BLK 51 : #02-01 to #06-01
- BLK 53 : #02-06\* to #06-06\*
- BLK 57 : #02-14 to #06-14, #02-15\* to #06-15\*
- BLK 65 : #02-31 to #06-31
- BLK 67 : #02-34\* to #06-34\*
- BLK 69 : #02-39 to #06-39

## Type C3a-P

117 sq m / 1259 sq ft

- BLK 51 : #01-01
- BLK 53 : #01-06\*
- BLK 57 : #01-14, #01-15\*
- BLK 65 : #01-31
- BLK 67 : #01-34\*
- BLK 69 : #01-39



- Wall not allowed to be hacked or altered
- \* Mirror Image
- P.E.S. - Private Enclosed Space
- W - Washer/Dryer (not included)
- WC - Water Closet
- HS - Household Shelter
- DB/ST - Distribution Board/Storage
- RC - Reinforced Concrete
- F - Fridge (not included)
- A/C - Air-Conditioner

Area includes air-conditioner (A/C) ledge, balcony and strata void area where applicable. The plans are subject to change as may be approved by relevant authorities. All floor plans are approximate measurements only and are subject to government re-survey. The balcony shall not be enclosed unless with the approved balcony screen. For an illustration of the approved balcony screen, please refer to the diagram annexed hereto as "Annexure A".

Keyplan is not drawn to scale

# 4-BEDROOM PREMIUM

## Type C3b

120 sq m / 1292 sq ft

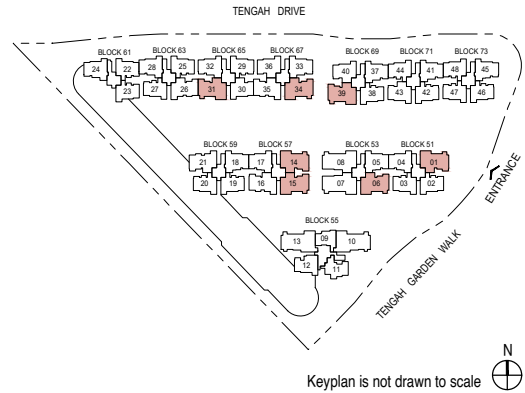
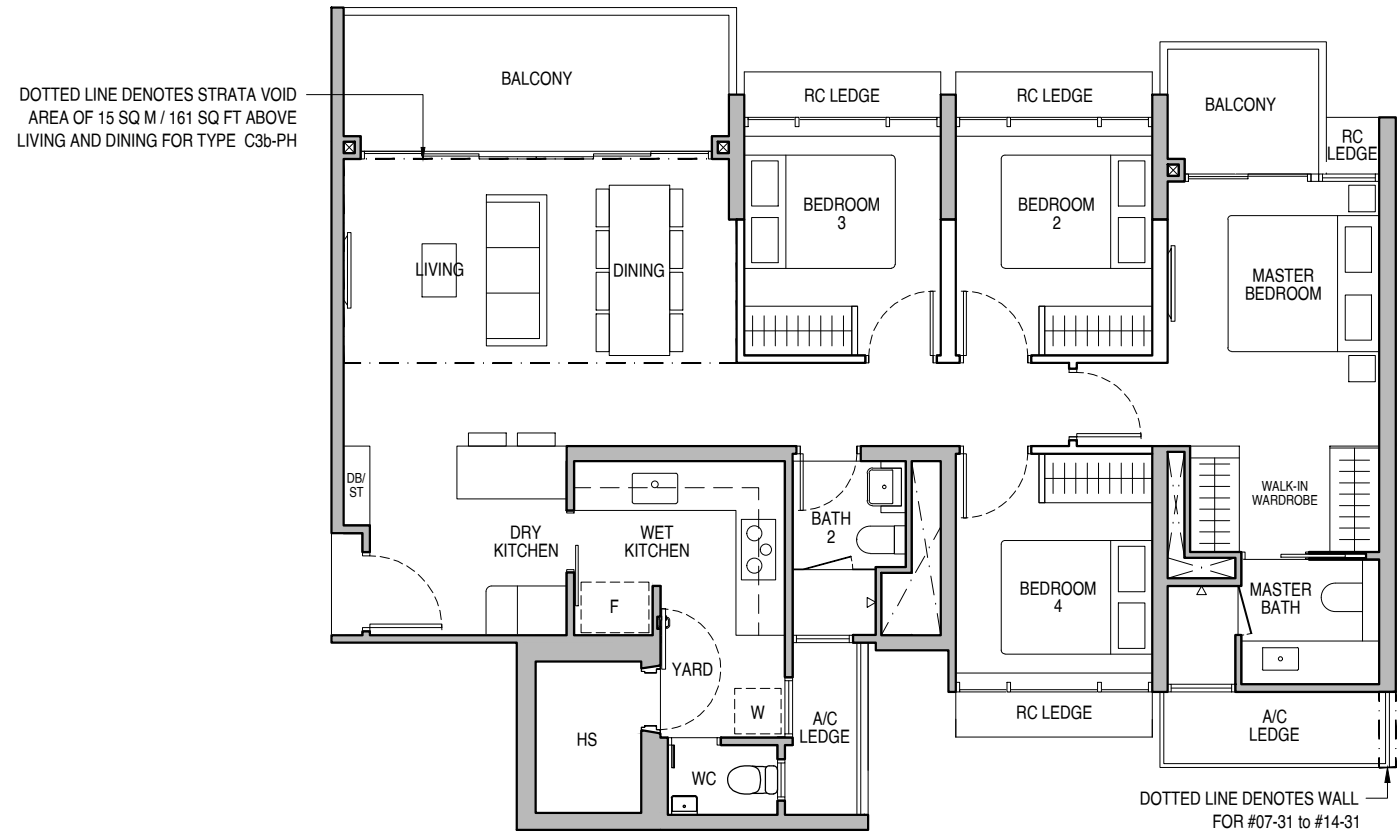
- BLK 51 : #07-01 to #13-01
- BLK 53 : #07-06\* to #13-06\*
- BLK 57 : #07-14 to #13-14, #07-15\* to #13-15\*
- BLK 65 : #07-31 to #13-31
- BLK 67 : #07-34\* to #13-34\*
- BLK 69 : #07-39 to #13-39

## Type C3b-PH

135 sq m / 1453 sq ft

- BLK 51 : #14-01
- BLK 53 : #14-06\*
- BLK 57 : #14-14, #14-15\*
- BLK 65 : #14-31
- BLK 67 : #14-34\*
- BLK 69 : #14-39

Including strata void area of 15 sq m / 161 sq ft above living and dining with 4.5m floor to ceiling height



0 0.5 1 2 5M

Wall not allowed to be hacked or altered

\* Mirror Image

P.E.S. - Private Enclosed Space

W - Washer/Dryer (not included)

WC - Water Closet

HS - Household Shelter

DB/ST - Distribution Board/Storage

RC - Reinforced Concrete

F - Fridge (not included)

A/C - Air-Conditioner

Area includes air-conditioner (A/C) ledge, balcony and strata void area where applicable. The plans are subject to change as may be approved by relevant authorities. All floor plans are approximate measurements only and are subject to government re-survey. The balcony shall not be enclosed unless with the approved balcony screen. For an illustration of the approved balcony screen, please refer to the diagram annexed hereto as "Annexure A".

# 5-BEDROOM PREMIUM

## Type D1

141 sq m / 1518 sq ft

BLK 53 : #02-07\* to #13-07\*, #02-08 to #13-08

## Type D1-P

141 sq m / 1518 sq ft

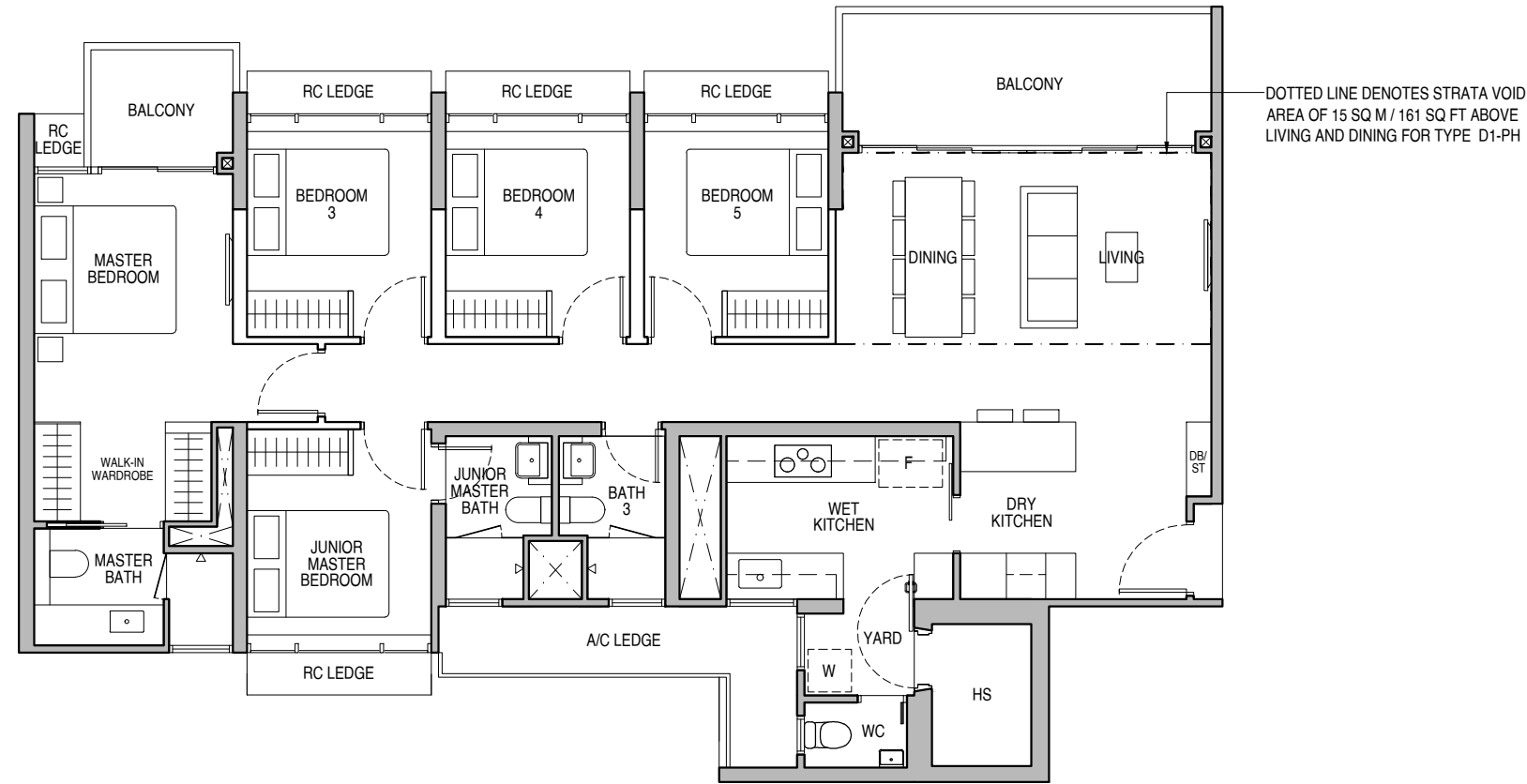
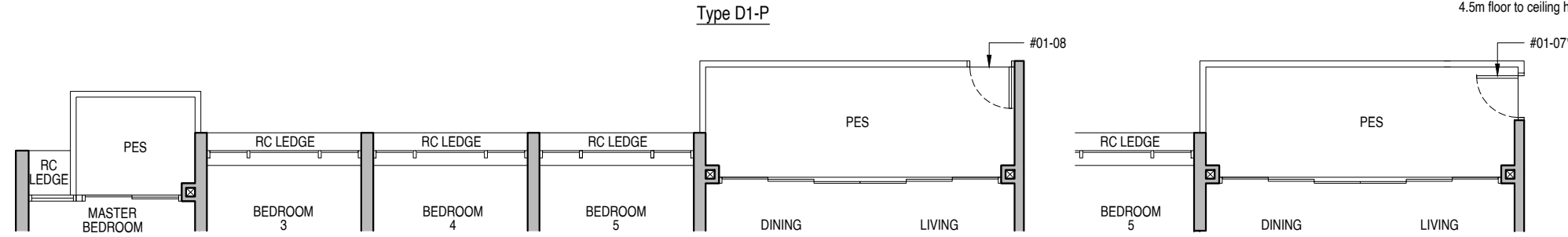
BLK 53 : #01-07\*, #01-08

## Type D1-PH

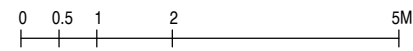
156 sq m / 1679 sq ft

BLK 53 : #14-07\*, #14-08

Including strata void area of 15 sq m / 161 sq ft above living and dining with 4.5m floor to ceiling height

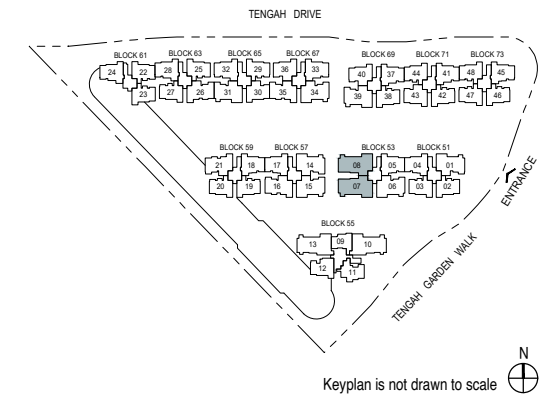


DOTTED LINE DENOTES STRATA VOID AREA OF 15 SQ M / 161 SQ FT ABOVE LIVING AND DINING FOR TYPE D1-PH



- Wall not allowed to be hacked or altered
- \* Mirror Image
- P.E.S. - Private Enclosed Space
- W - Washer/Dryer (not included)
- WC - Water Closet
- HS - Household Shelter
- DB/ST - Distribution Board/Storage
- RC - Reinforced Concrete
- F - Fridge (not included)
- A/C - Air-Conditioner

Area includes air-conditioner (A/C) ledge, balcony and strata void area where applicable. The plans are subject to change as may be approved by relevant authorities. All floor plans are approximate measurements only and are subject to government re-survey. The balcony shall not be enclosed unless with the approved balcony screen. For an illustration of the approved balcony screen, please refer to the diagram annexed hereto as "Annexure A".



# 5-BEDROOM PREMIUM

## Type D2

145 sq m / 1561 sq ft

BLK 55 : #02-10 to #13-10, #02-13\* to #13-13\*

## Type D2-P

145 sq m / 1561 sq ft

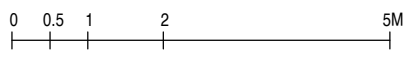
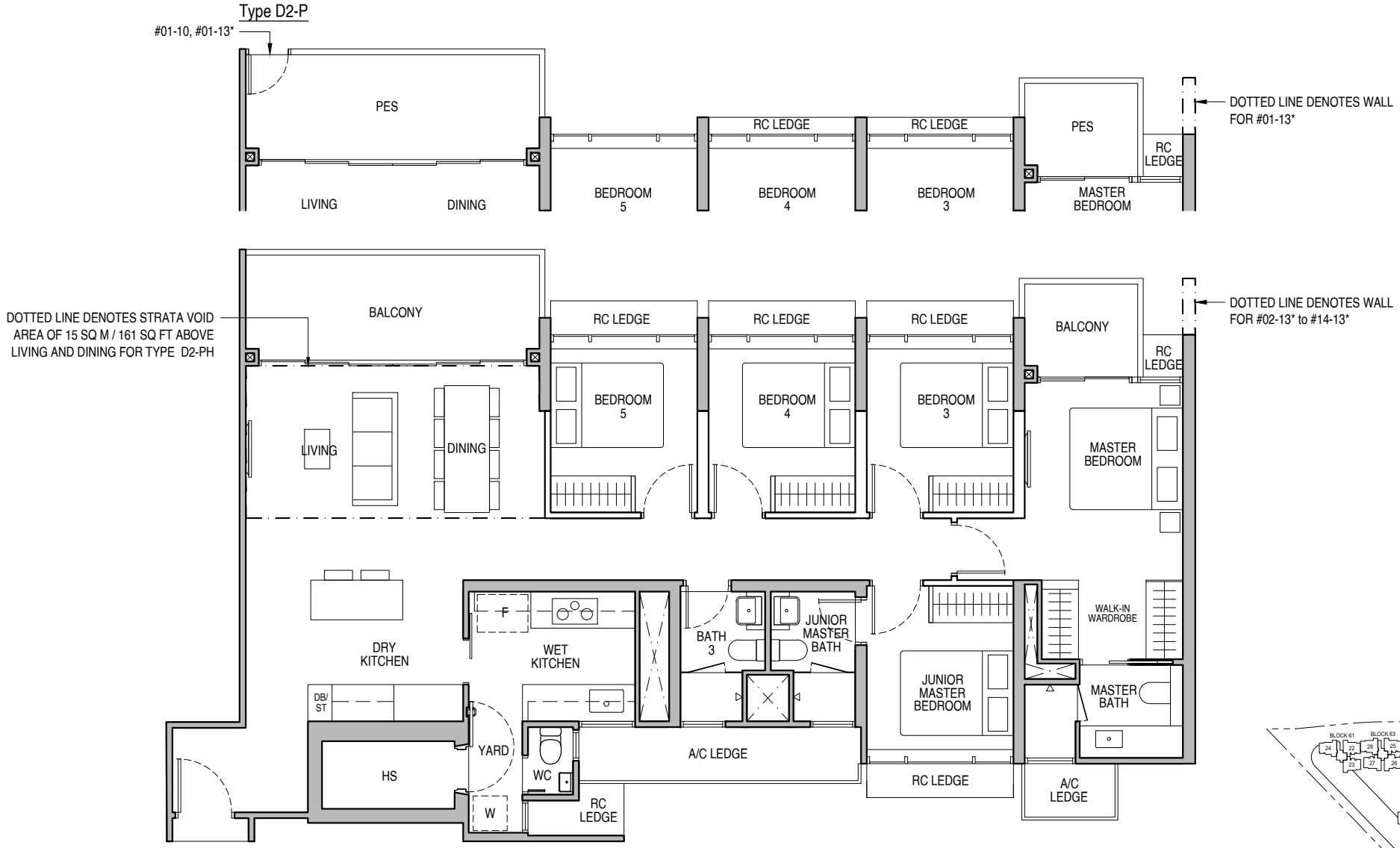
BLK 55 : #01-10, #01-13\*

## Type D2-PH

160 sq m / 1722 sq ft

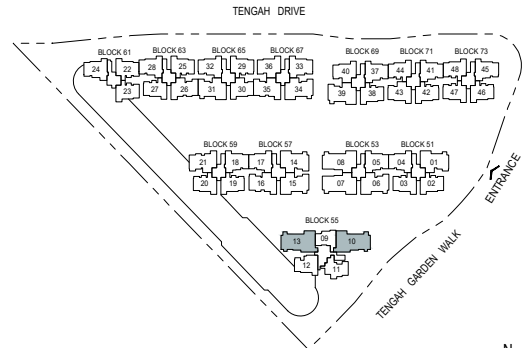
BLK 55 : #14-10, #14-13\*

Including strata void area of 15 sq m / 161 sq ft above living and dining with 4.5m floor to ceiling height



- Wall not allowed to be hacked or altered
- \* Mirror Image
- P.E.S. - Private Enclosed Space
- W - Washer/Dryer (not included)
- WC - Water Closet
- HS - Household Shelter
- DB/ST - Distribution Board/Storage
- RC - Reinforced Concrete
- F - Fridge (not included)
- A/C - Air-Conditioner

Area includes air-conditioner (A/C) ledge, balcony and strata void area where applicable. The plans are subject to change as may be approved by relevant authorities. All floor plans are approximate measurements only and are subject to government re-survey. The balcony shall not be enclosed unless with the approved balcony screen. For an illustration of the approved balcony screen, please refer to the diagram annexed hereto as "Annexure A".



Keyplan is not drawn to scale

