

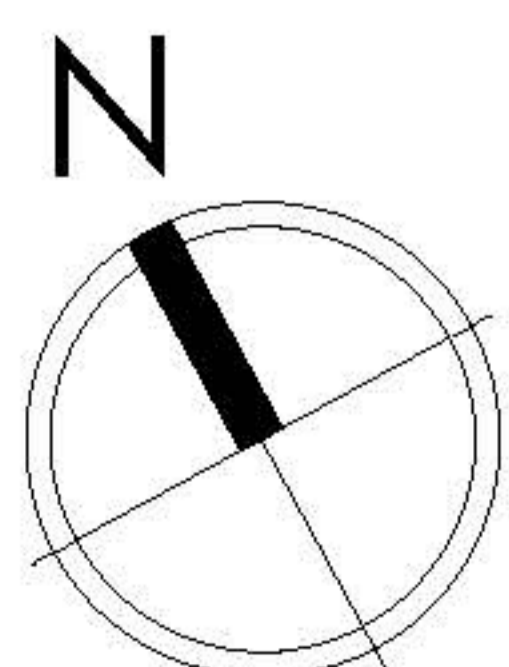
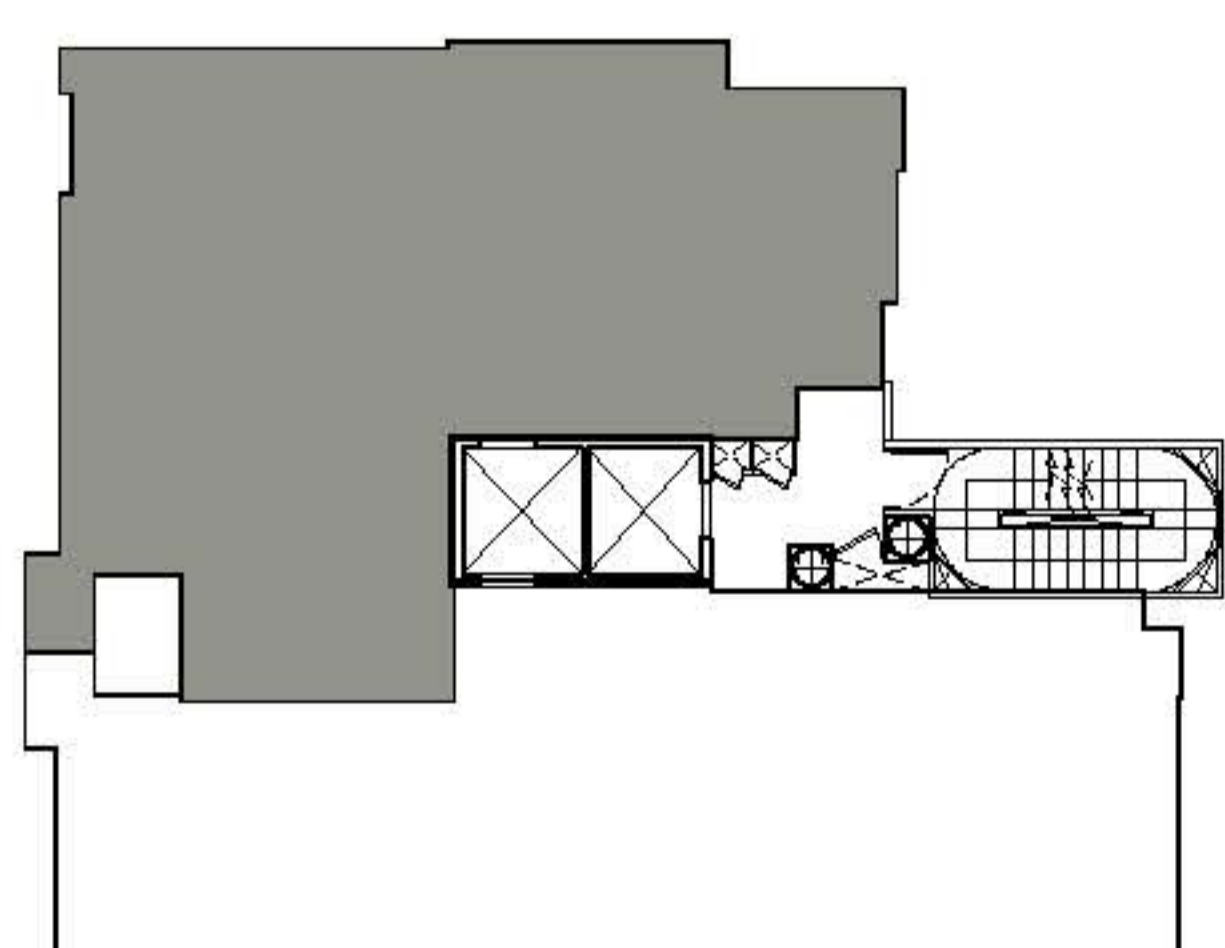
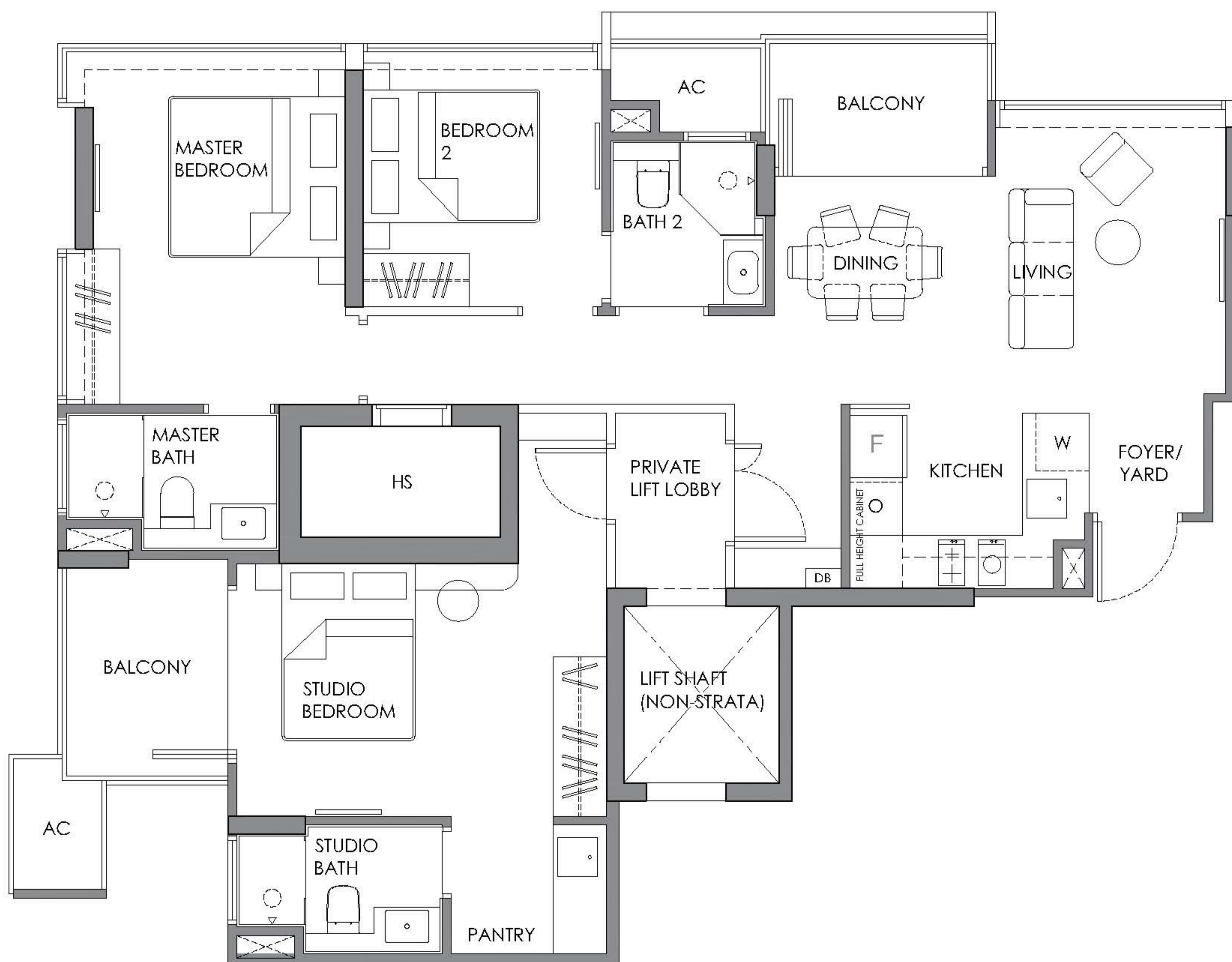
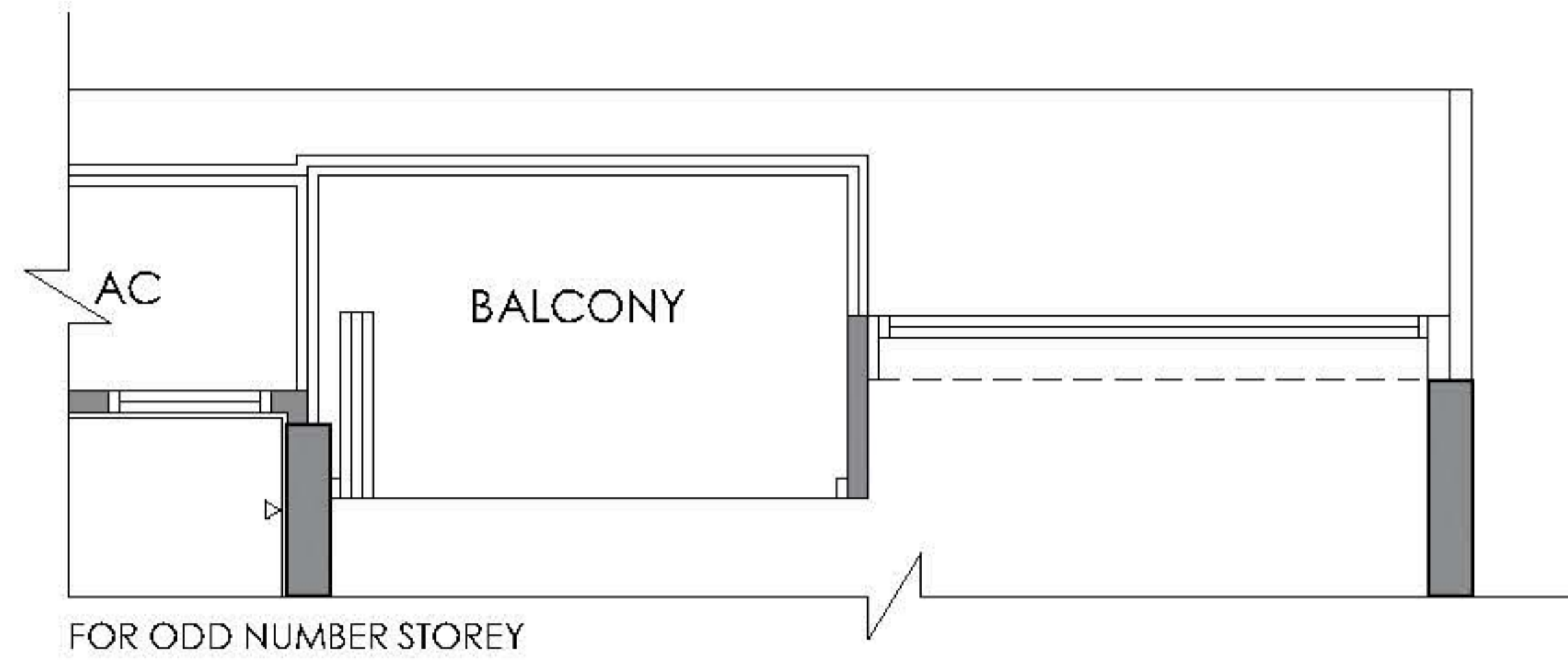
TYPE A

3 BEDROOM DUAL-KEY

TOTAL 7 UNITS - 3RD & 9TH STOREY

#03-01/ #04-01/ #05-01/ #06-01/
#07-01/ #08-01/ #09-01

Strata area : 101 sqm / 1,087 sqft



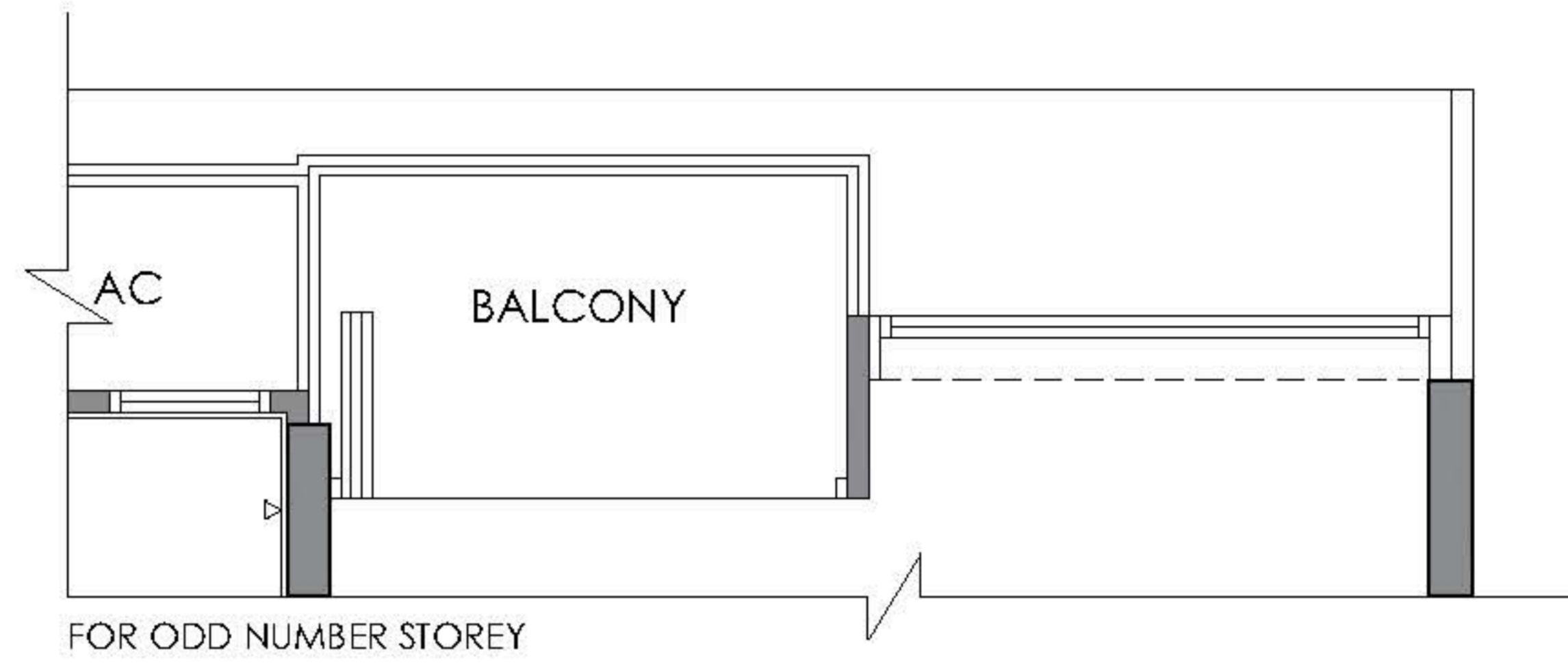
Plans are not to scale and subject to any amendment as may be approved by relevant authorities. All areas are approximate and are subject to final survey.

HS = Household Shelter; DB = Distribution Board; AC = Air Con Ledge;
X = Void; Master Bath = Master Bathroom; Jr Master Bath = Junior Master
Bathroom; Bath = Bathroom; Pwdr = Powder Room; F = Fridge; O = Oven;
W = Washing Machine Cum Dryer

TYPE A1
3 BEDROOM + HOME OFFICE
 TOTAL 2 UNITS - 10TH & 11TH STOREY

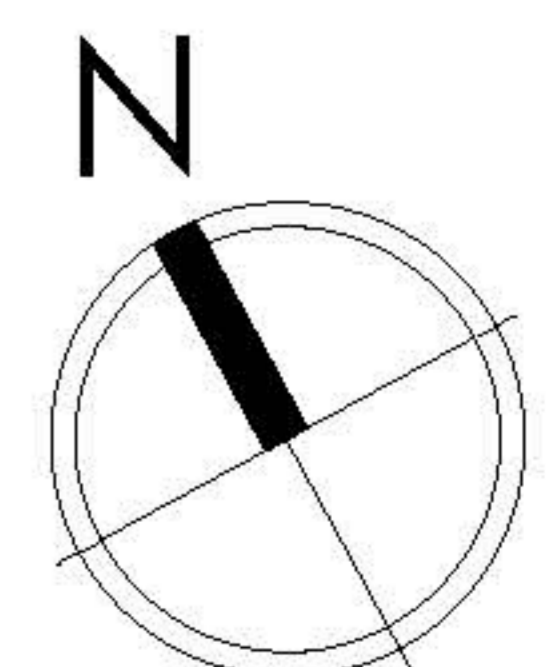
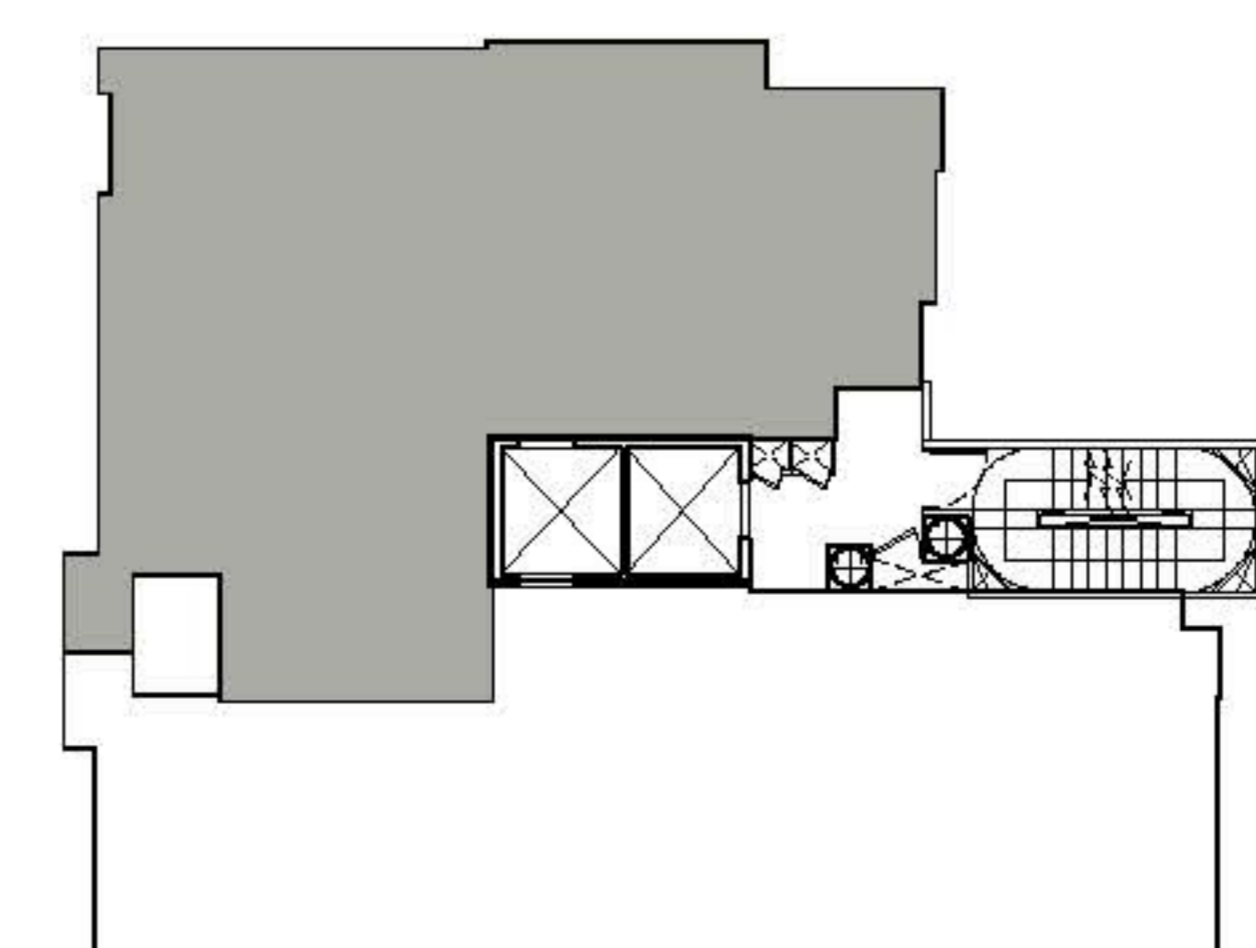
#10-01 / #11-01

Strata area : 101 sqm / 1,087 sqft



Plans are not to scale and subject to any amendment as may be approved by relevant authorities. All areas are approximate and are subject to final survey.

HS = Household Shelter; DB = Distribution Board; AC = Air Con Ledge;
 X = Void; Master Bath = Master Bathroom; Jr Master Bath = Junior Master Bathroom; Bath = Bathroom; Pwdr = Powder Room; F = Fridge; O = Oven;
 W = Washing Machine Cum Dryer



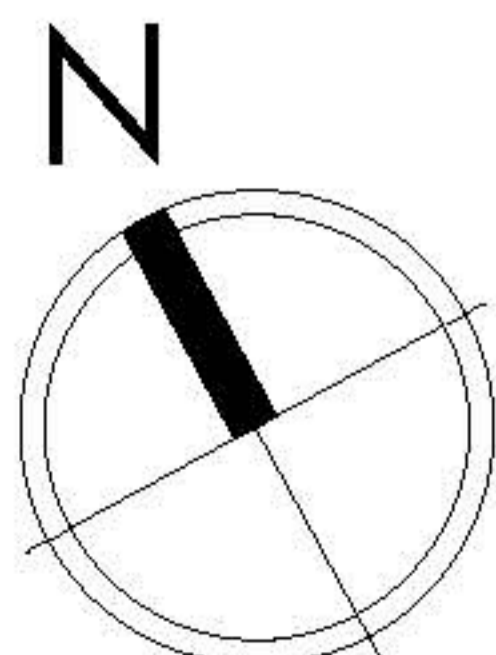
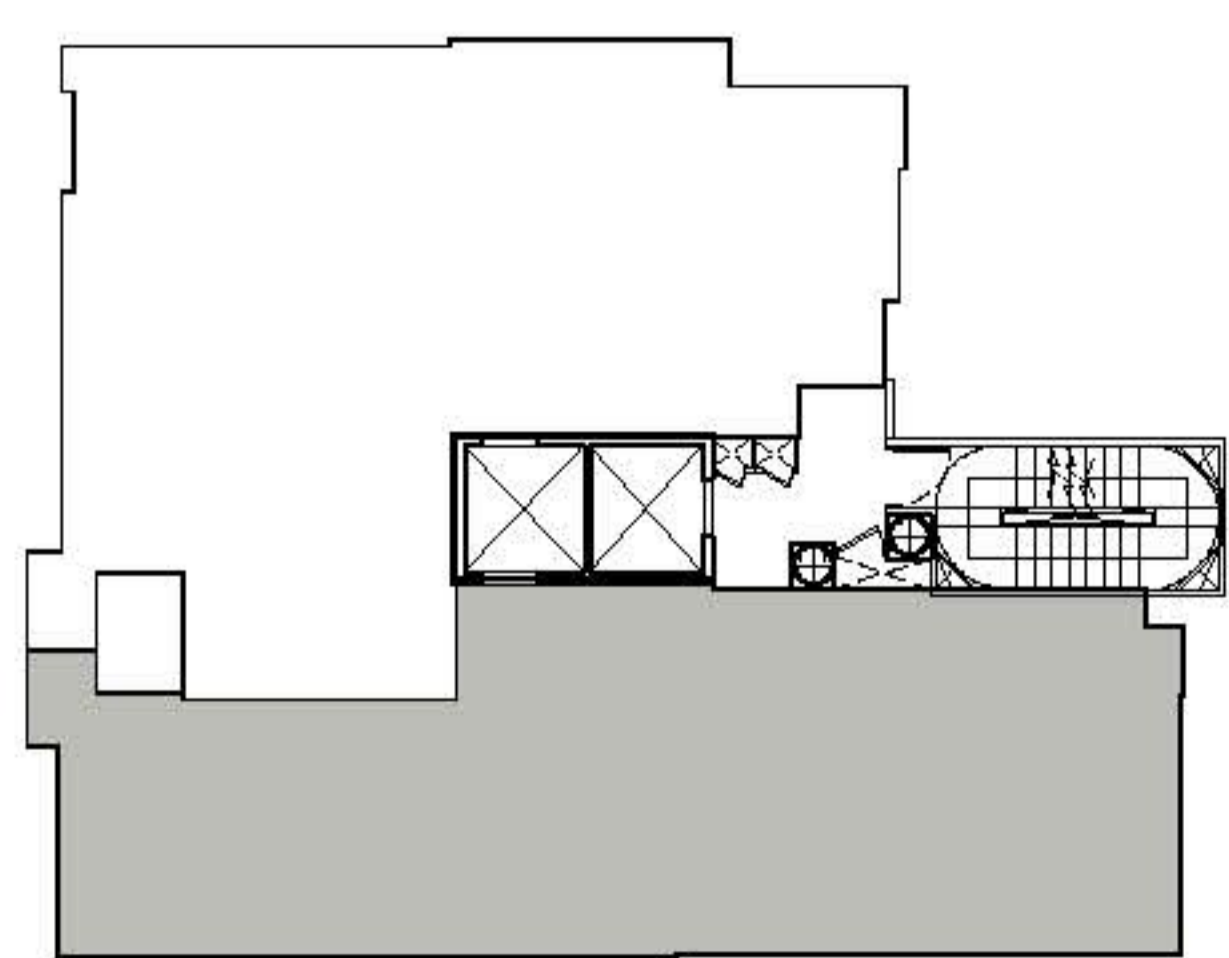
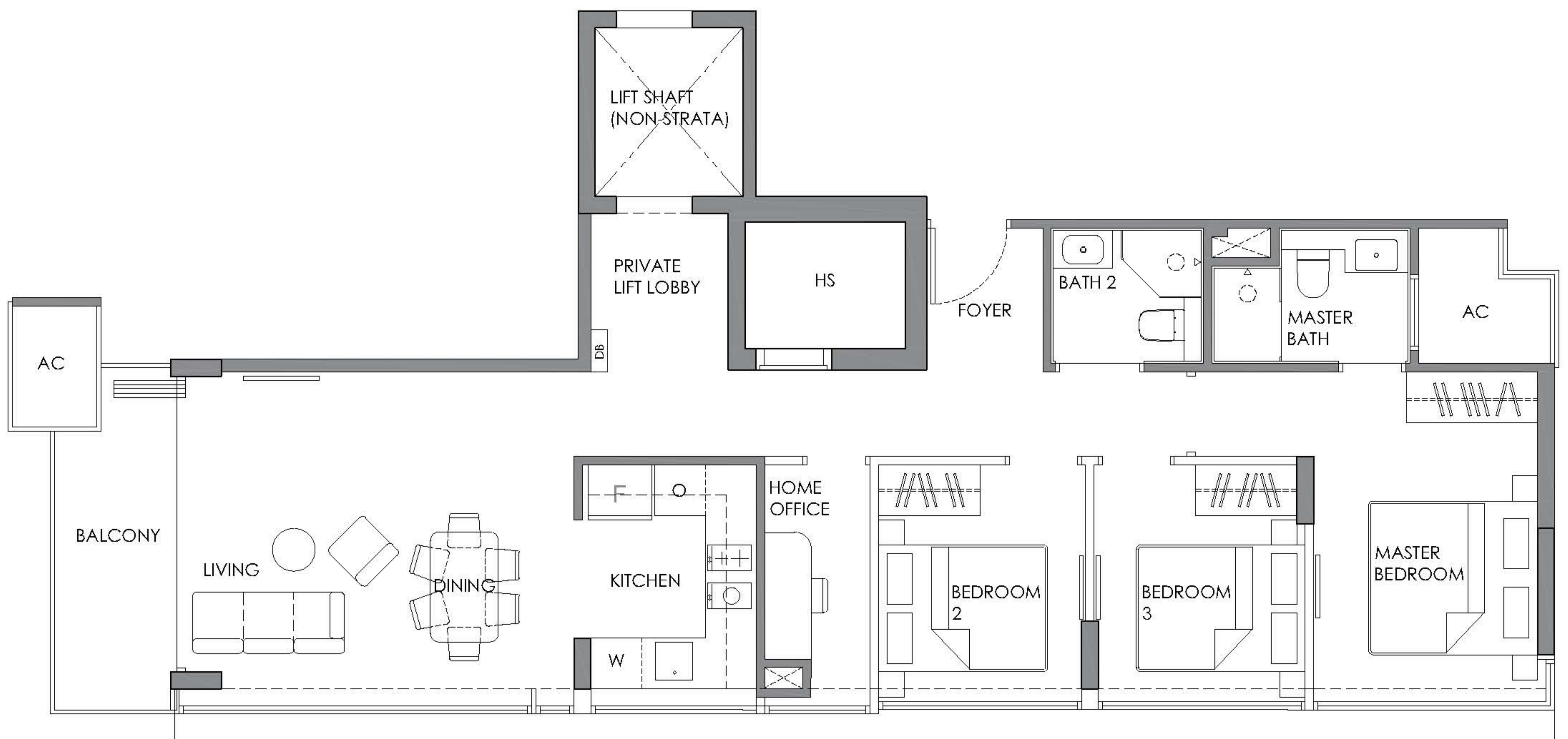
TYPE B

3 BEDROOM + HOME OFFICE

TOTAL 9 UNITS - 3RD & 11TH STOREY

#03-02/ #04-02/ #05-02/ #06-02/ #07-02/
#08-02/ #09-02/ #10-02/ #11-02

Strata area : 93 sqm / 1,001 sqft



Plans are not to scale and subject to any amendment as may be approved by relevant authorities. All areas are approximate and are subject to final survey.

HS = Household Shelter; DB = Distribution Board; AC = Air Con Ledge;
X = Void; Master Bath = Master Bathroom; Jr Master Bath = Junior Master Bathroom; Bath = Bathroom; Pwdr = Powder Room; F = Fridge; O = Oven;
W = Washing Machine Cum Dryer

TYPE C

4 BEDROOM + HOME OFFICE TOTAL 4 UNITS - 12TH TO 15TH STOREY

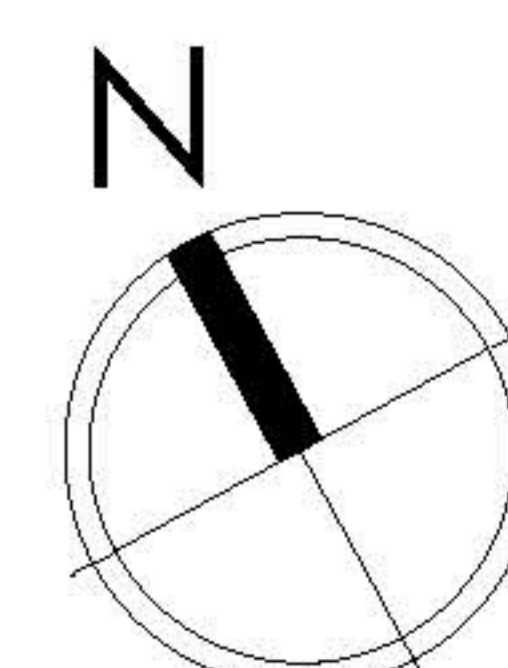
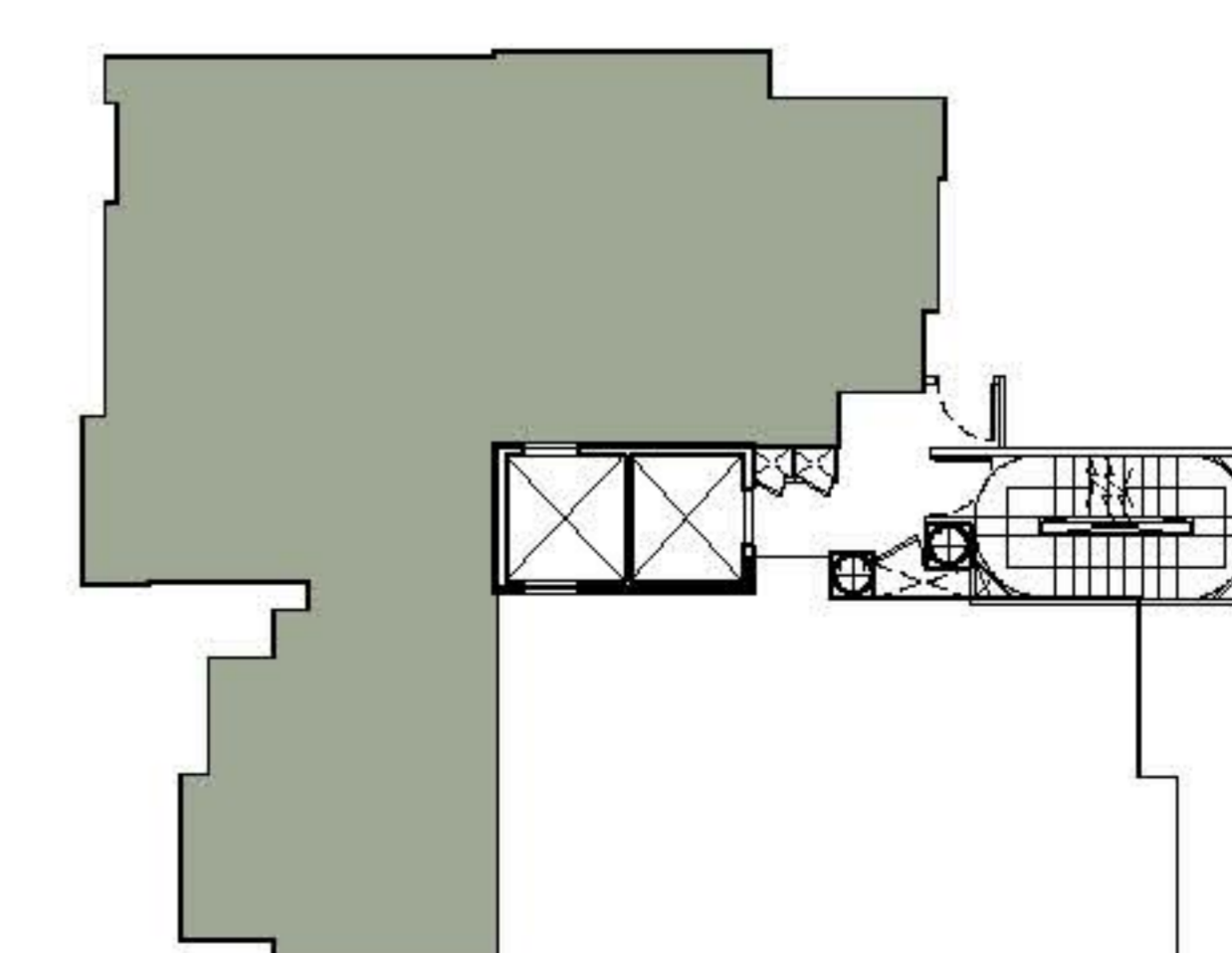
#12-01/ #13-01/ #14-01/ #15-01

Strata area : 119 sqm / 1,281 sqft



Plans are not to scale and subject to any amendment as may be approved by relevant authorities. All areas are approximate and are subject to final survey.

HS = Household Shelter; DB = Distribution Board; AC = Air Con Ledge;
X = Void; Master Bath = Master Bathroom; Jr Master Bath = Junior Master Bathroom; Bath = Bathroom; Pwdr = Powder Room; F = Fridge; O = Oven;
W = Washing Machine Cum Dryer



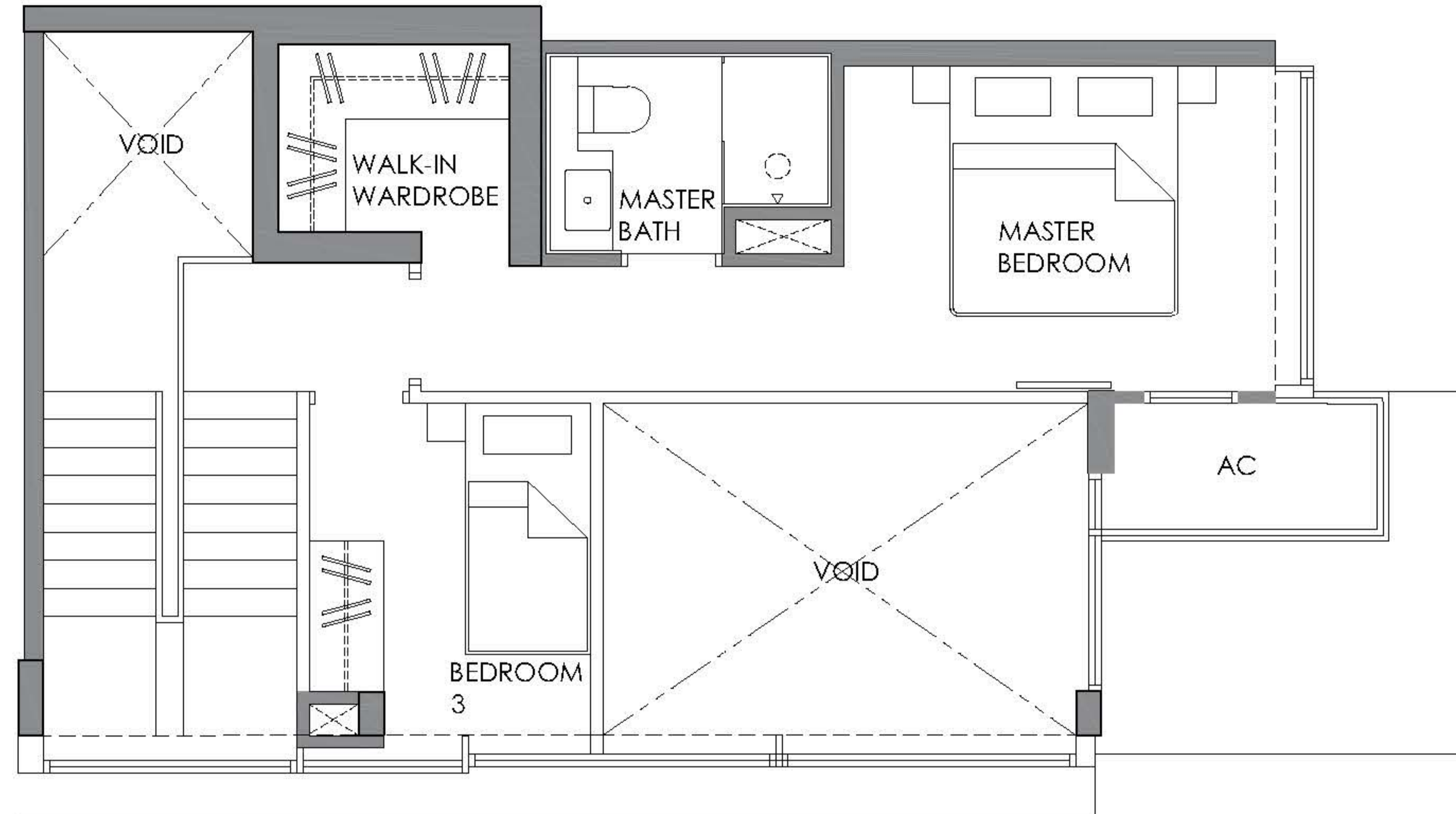
TYPE D

3 BEDROOM (DUPLEX)

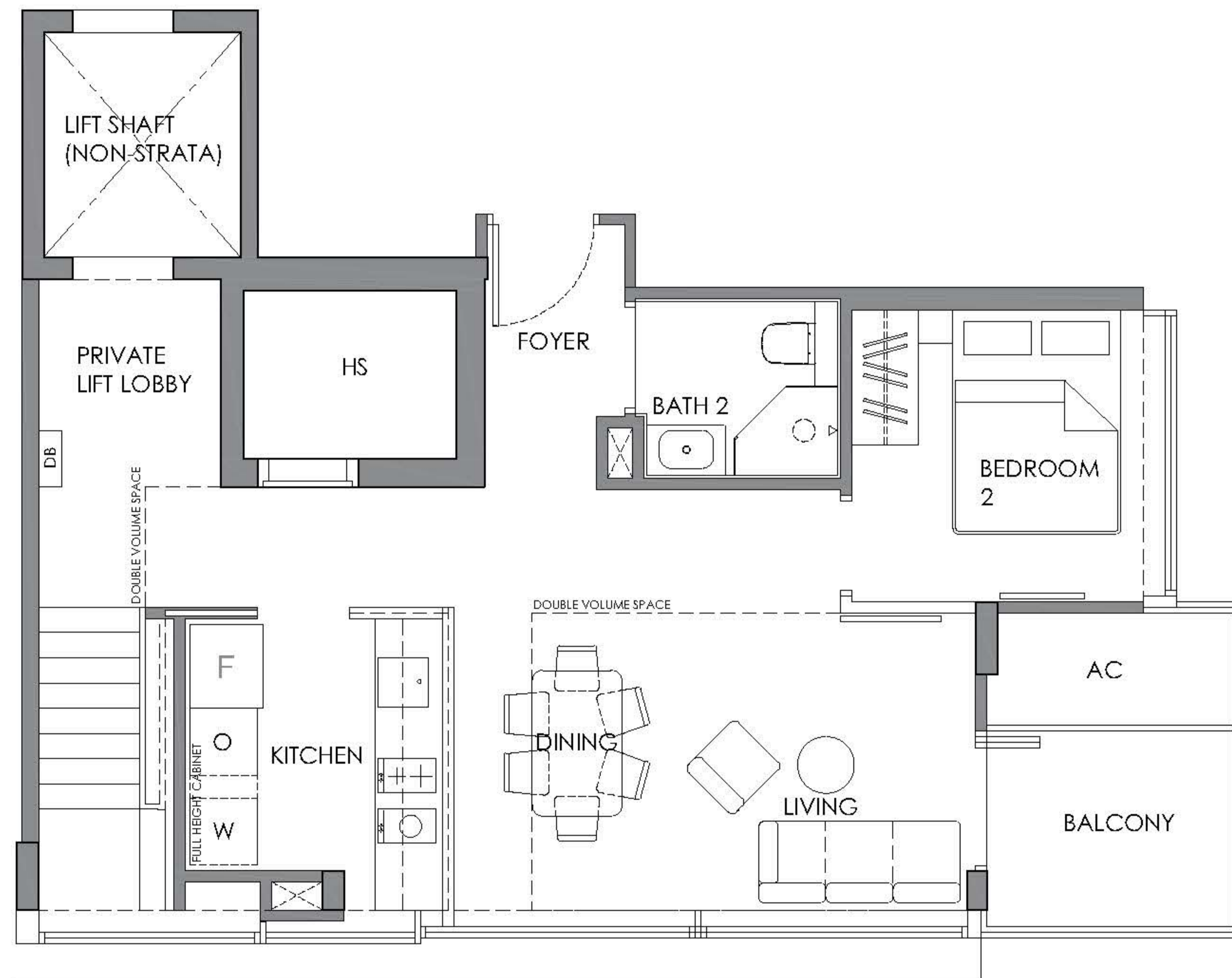
TOTAL 2 UNITS AT 12 & 13TH / 14 & 15TH STOREY

#12-02/ #14-02

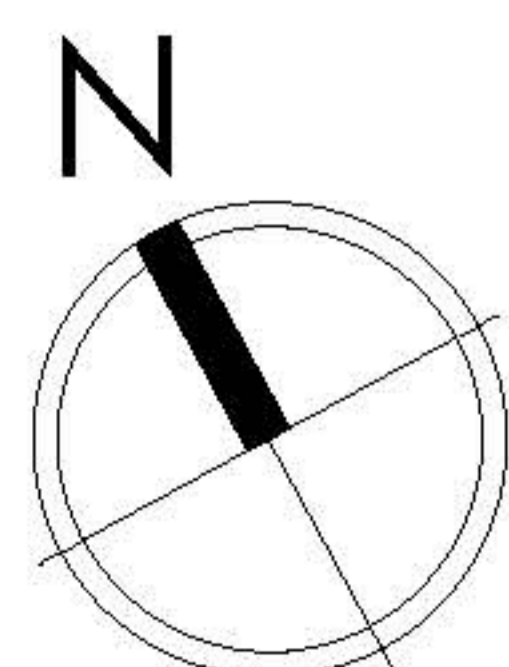
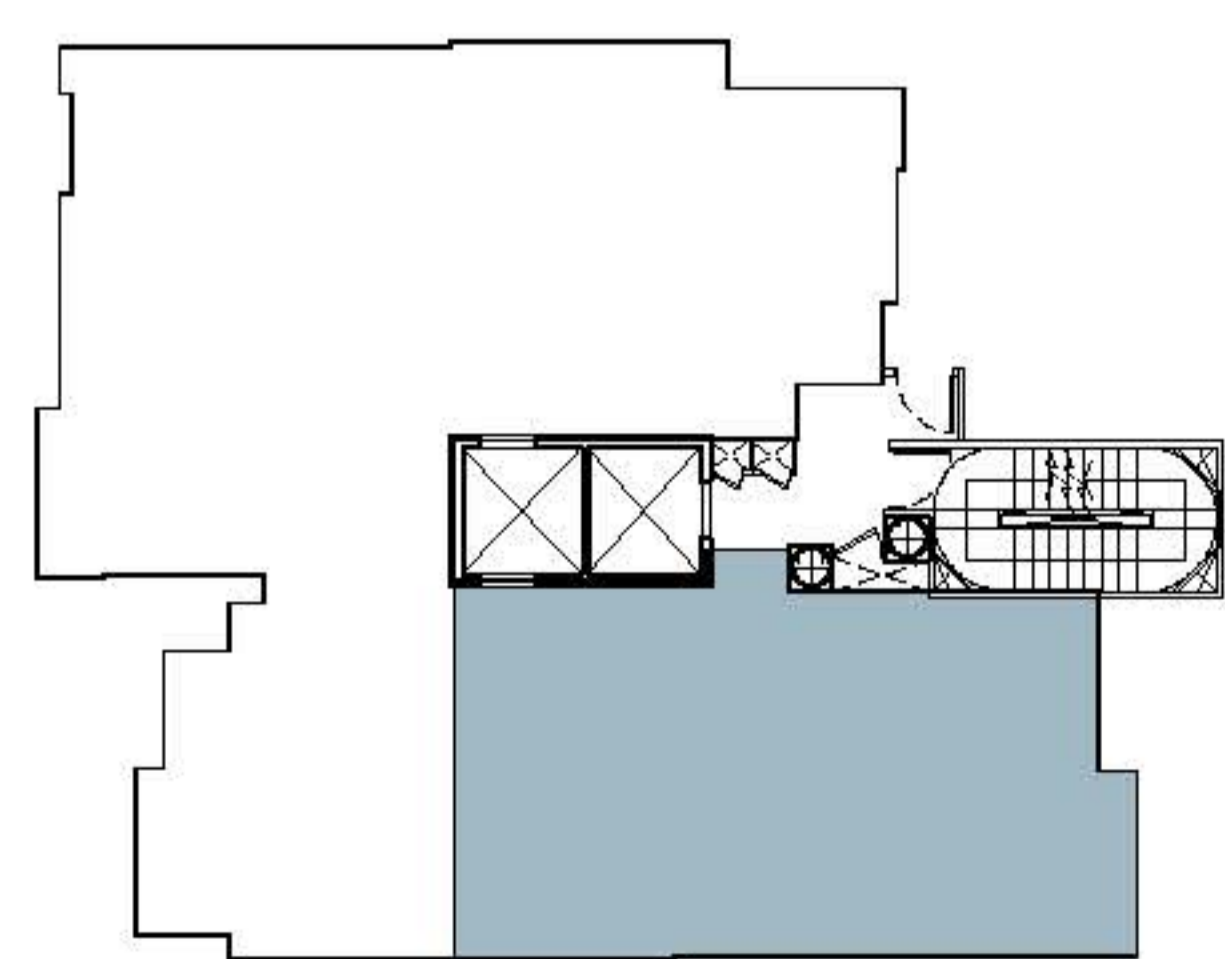
Strata area : 118 sqm / 1,270 sqft



UPPER STOREY



LOWER STOREY



Plans are not to scale and subject to any amendment as may be approved by relevant authorities. All areas are approximate and are subject to final survey.

HS = Household Shelter; DB = Distribution Board; AC = Air Con Ledge; X = Void; Master Bath = Master Bathroom; Jr Master Bath = Junior Master Bathroom; Bath = Bathroom; Pwdr = Powder Room; F = Fridge; O = Oven; W = Washing Machine Cum Dryer

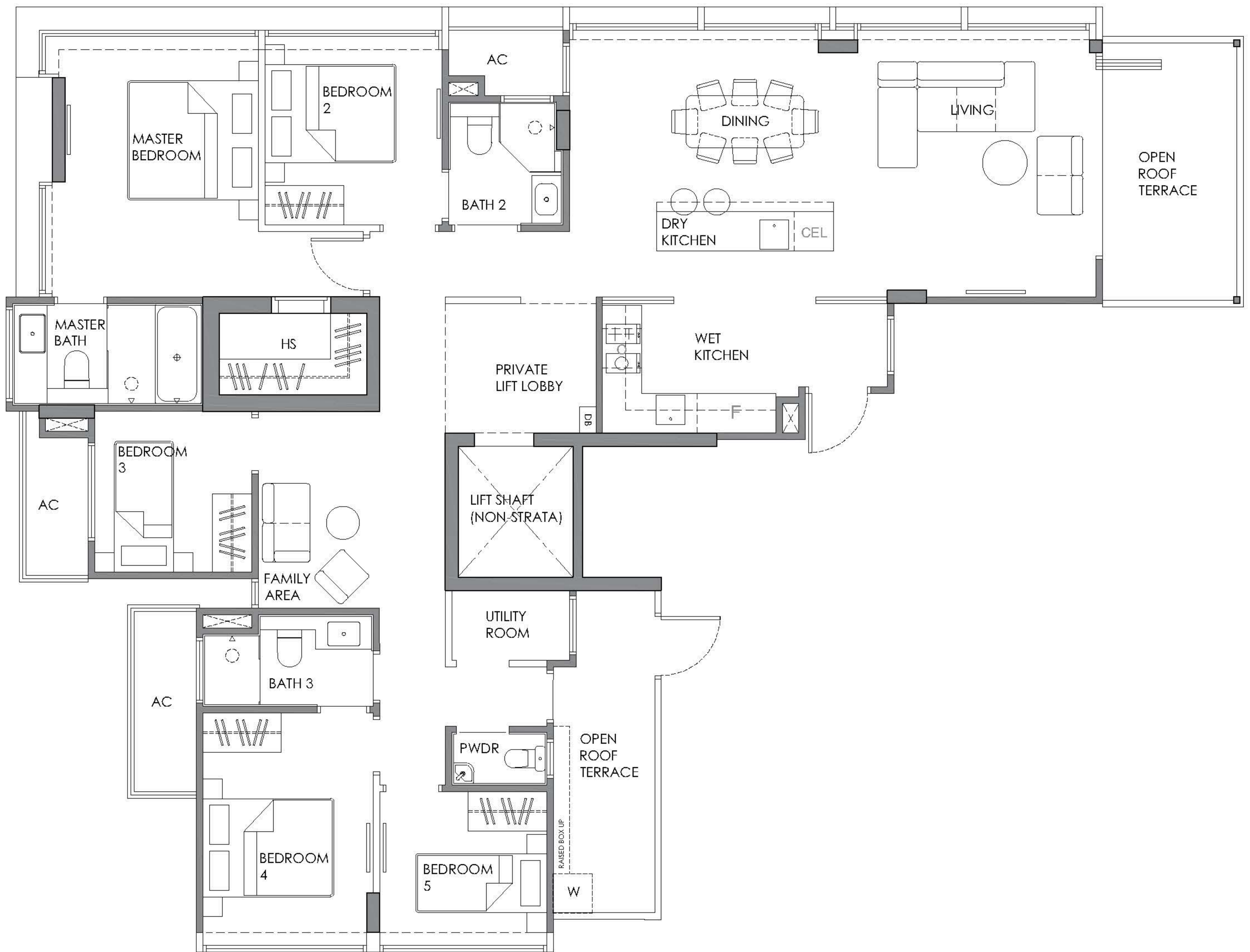
TYPE PH

5 BEDROOM

TOTAL 1 UNIT AT 16TH STOREY

#16-01

Strata area : 158 sqm / 1,701 sqft



Plans are not to scale and subject to any amendment as may be approved by relevant authorities. All areas are approximate and are subject to final survey.

HS = Household Shelter; DB = Distribution Board; AC = Air Con Ledge;
X = Void; Master Bath = Master Bathroom; Jr Master Bath = Junior Master Bathroom; Bath = Bathroom; Pwdr = Powder Room; F = Fridge; O = Oven;
W = Washing Machine Cum Dryer

