



Unit A1

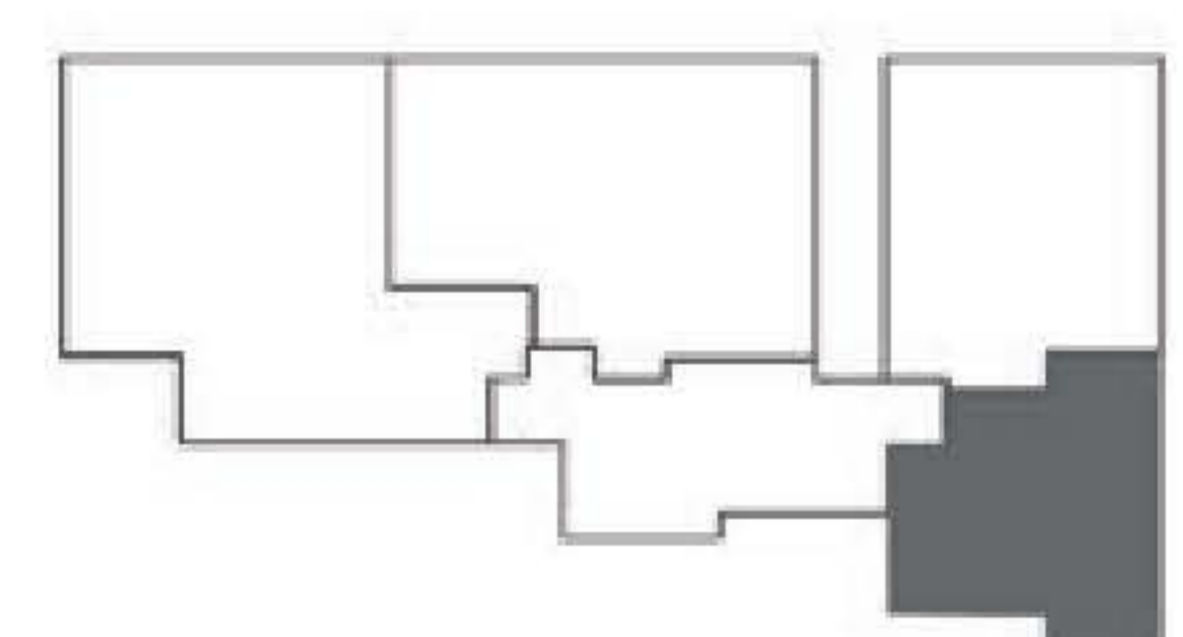
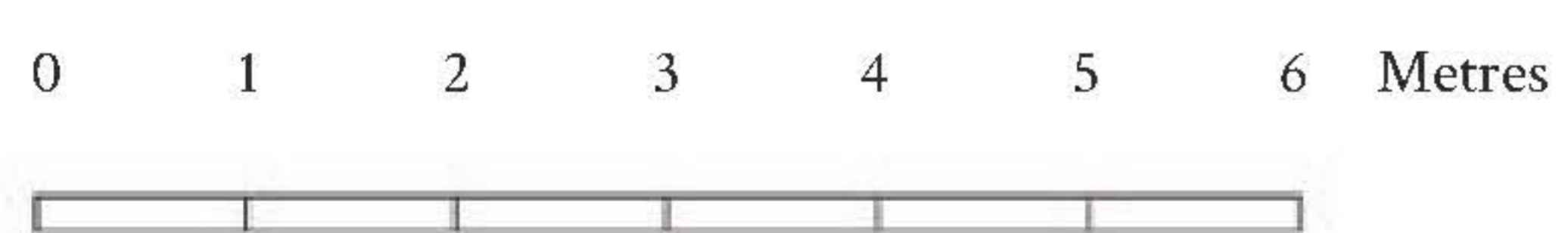
#02-04, #03-04, #04-04

1 Bedroom + Study Room

56 sq.m / 603 sq.ft

(includes 3 sq.m A/C Ledge)

All plans are approximate measurements and are subjected to final survey.
 Amendments may be required, upon approval of the relevant authorities.
 Balcony, where applicable, shall not be enclosed unless with approved balcony screen.



2nd to 4th Storey



Unit A2

#02-03, #03-03, #04-03, #05-03

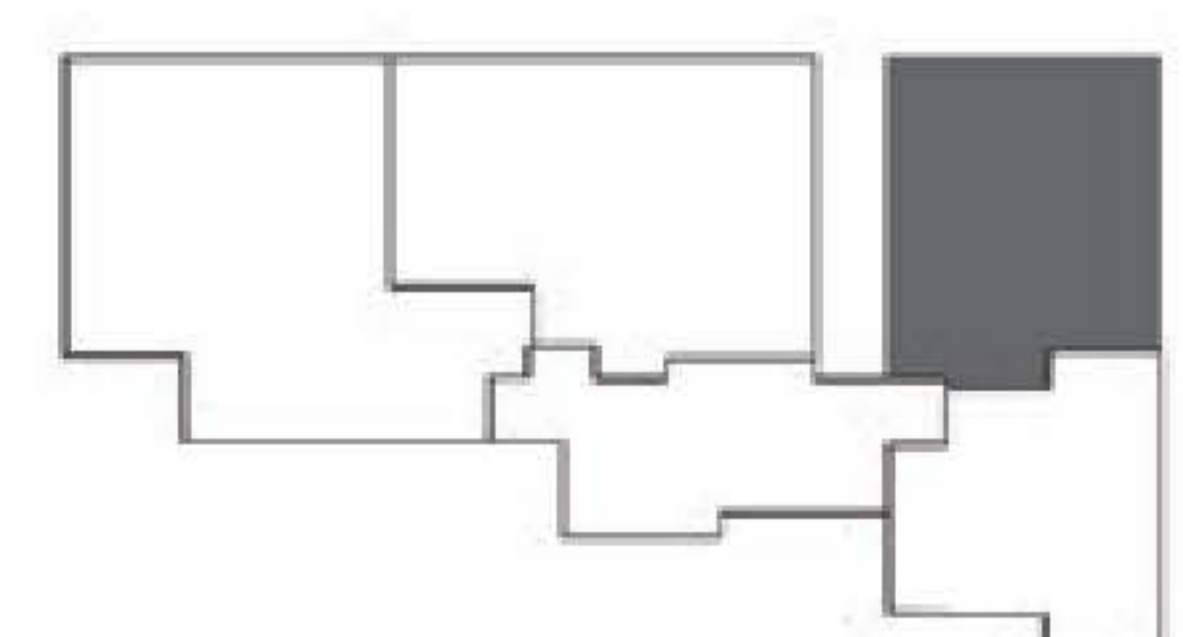
1 Bedroom + Study Space

59 sq.m / 635 sq.ft

(includes 3 sq.m A/C Ledge)

All plans are approximate measurements and are subjected to final survey.
Amendments may be required, upon approval of the relevant authorities.
Balcony, where applicable, shall not be enclosed unless with approved balcony screen.

0 1 2 3 4 5 6 Metres



2nd to 5th Storey



Unit B1

#02-02, #03-02, #04-02

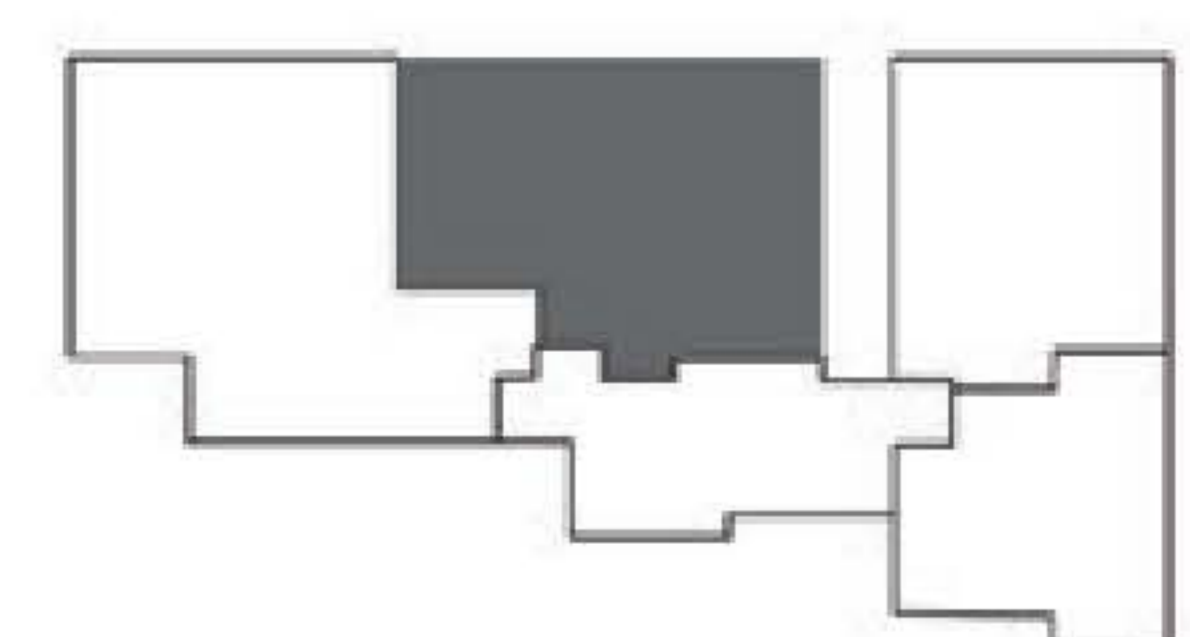
2 Bedroom Premium

90 sq.m / 969 sq.ft

(includes 4 sq.m A/C Ledge, 10 sq.m Balcony)

All plans are approximate measurements and are subjected to final survey.
 Amendments may be required, upon approval of the relevant authorities.
 Balcony, where applicable, shall not be enclosed unless with approved balcony screen.

0 1 2 3 4 5 6 Metres



2nd to 4th Storey



Unit B2

#02-01, #03-01, #04-01

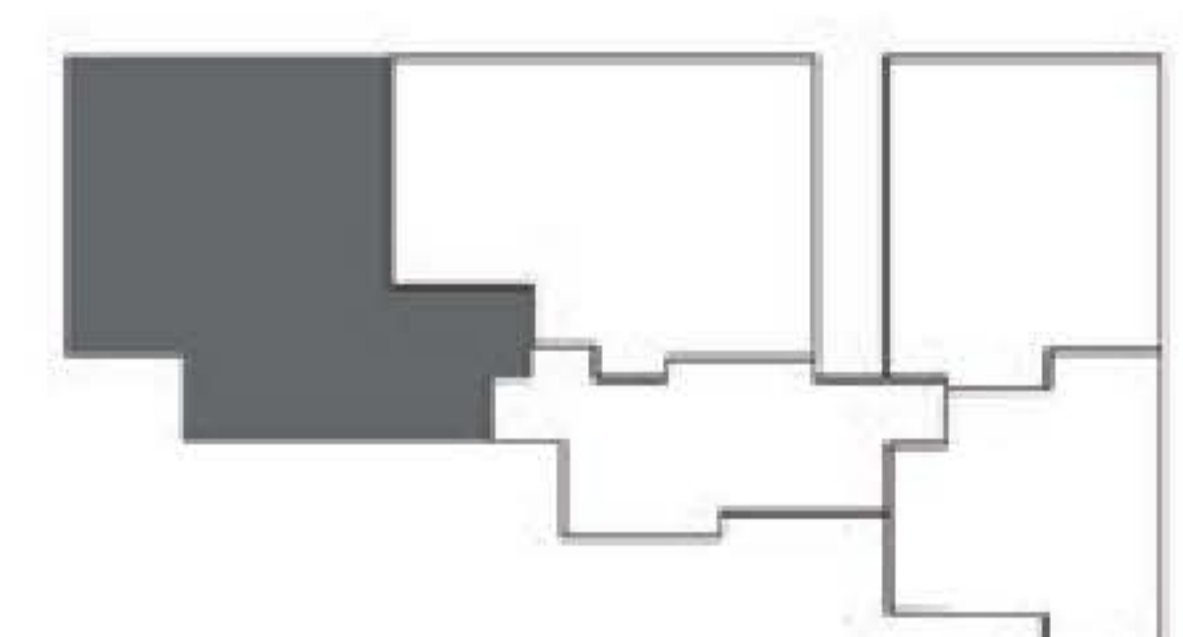
2 Bedroom + Study Room Premium

101 sq.m / 1087 sq.ft

(includes 3 sq.m A/C Ledge, 12 sq.m Balcony)

All plans are approximate measurements and are subjected to final survey.
Amendments may be required, upon approval of the relevant authorities.
Balcony, where applicable, shall not be enclosed unless with approved balcony screen.

0 1 2 3 4 5 6 Metres

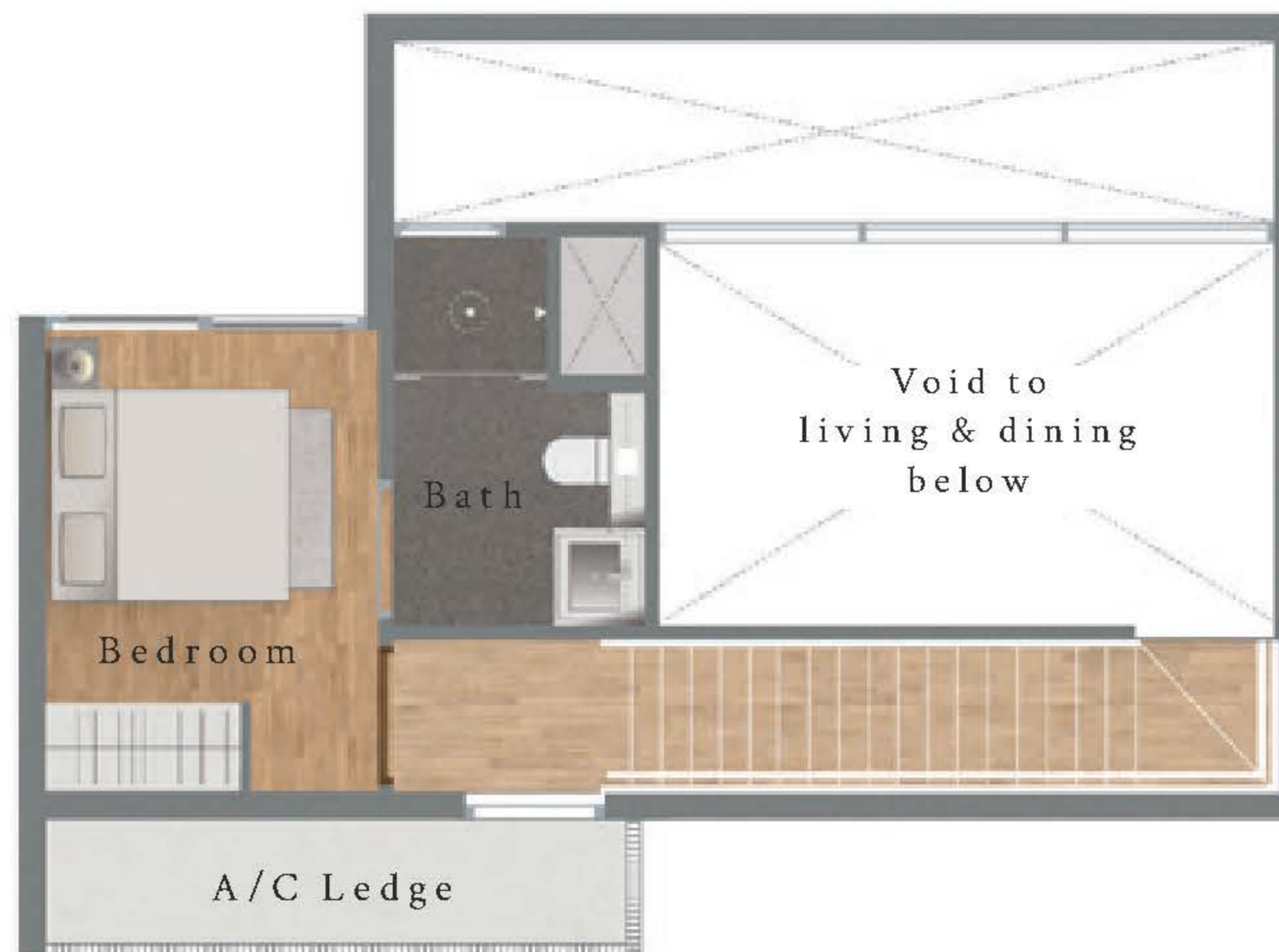


2nd to 4th Storey

Lower Floor



Upper Floor



Unit C1-PH

#05-02

3 Bedroom Penthouse

139 sq.m / 1496 sq.ft

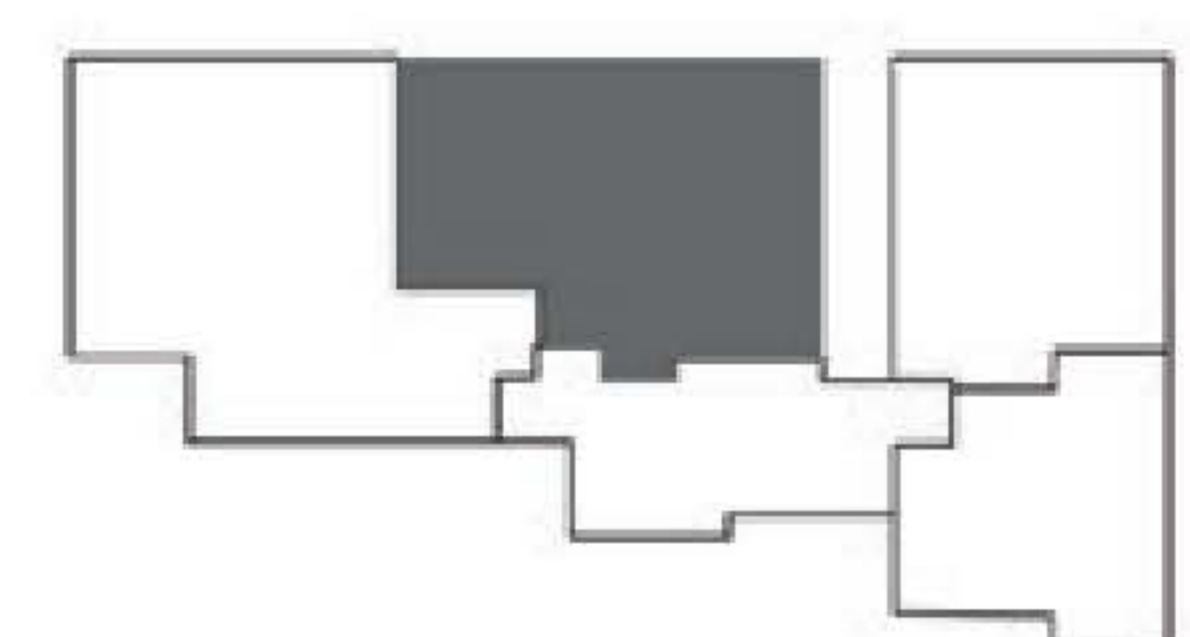
(Area includes A/C Ledge, Balcony and Void where applicable)

All plans are approximate measurements and are subjected to final survey.

Amendments may be required, upon approval of the relevant authorities.

Balcony, where applicable, shall not be enclosed unless with approved balcony screen.

0 1 2 3 4 5 6 Metres



5th Storey

Lower Floor



Upper Floor



Unit C2-PH

#05-01

3 Bedroom + Study Room Penthouse

178 sq.m / 1915 sq.ft

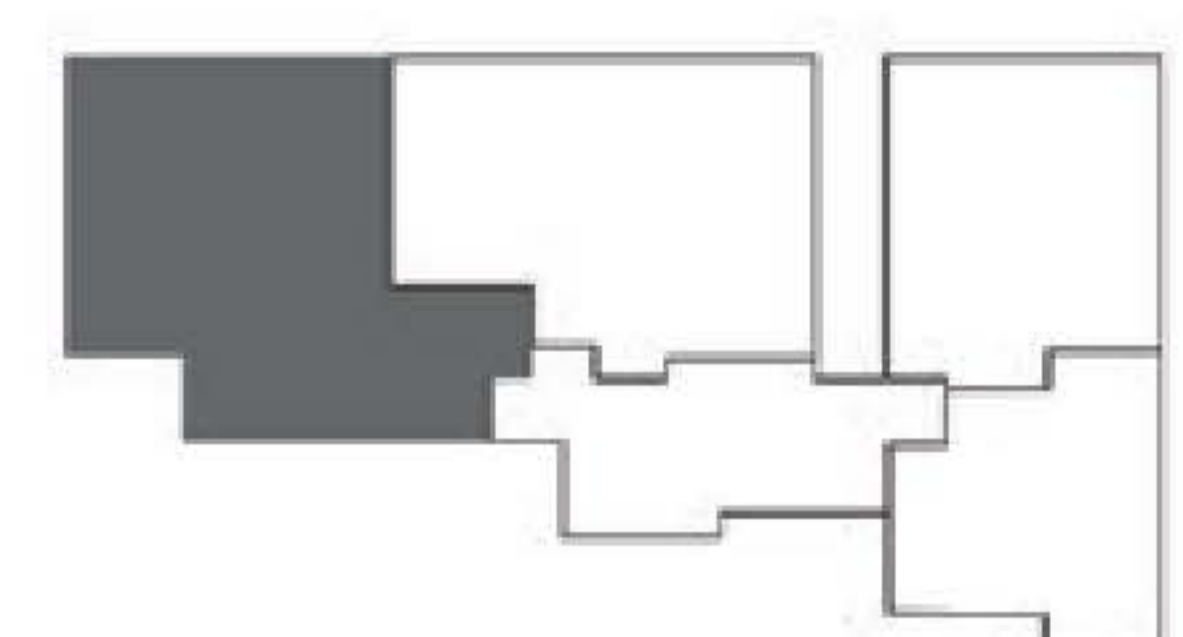
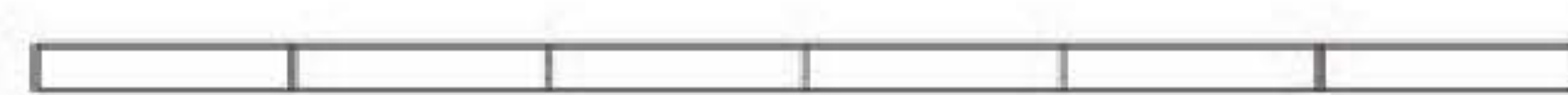
(Area includes A/C Ledge, Balcony and Void where applicable)

All plans are approximate measurements and are subjected to final survey.

Amendments may be required, upon approval of the relevant authorities.

Balcony, where applicable, shall not be enclosed unless with approved balcony screen.

0 1 2 3 4 5 6 Metres

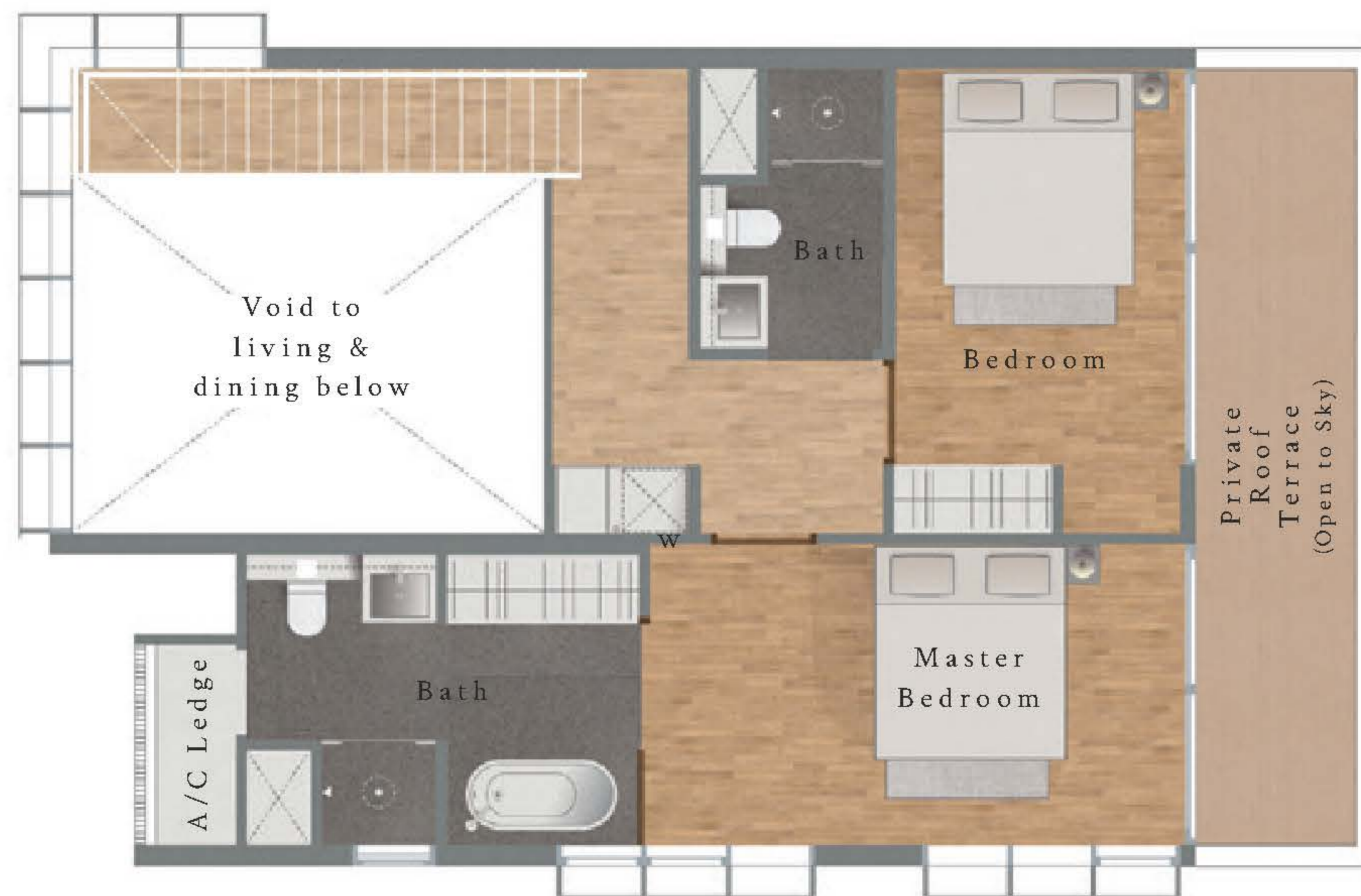


5th Storey

Lower Floor



Upper Floor



Unit C3-PH

#05-04

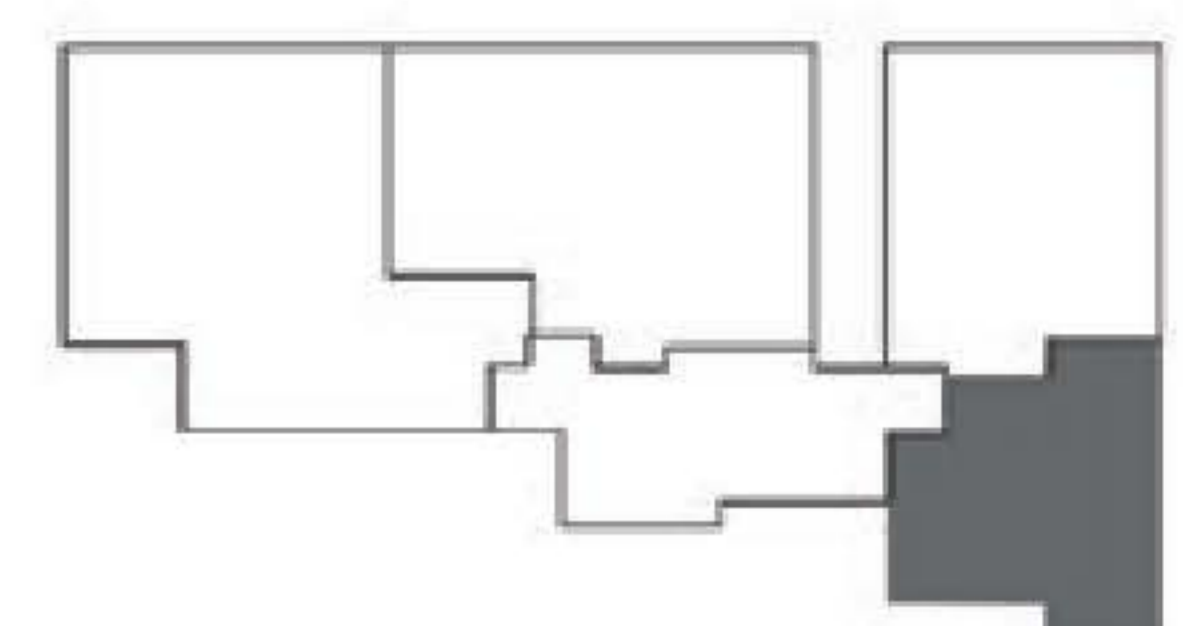
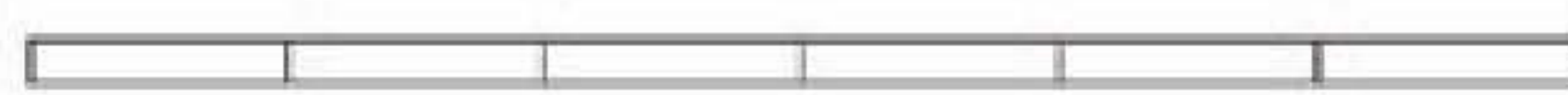
3 Bedroom Penthouse

146 sq.m / 1571 sq.ft

(Area includes A/C Ledge. Private Roof Terrace and Void where applicable)

All plans are approximate measurements and are subjected to final survey.
 Amendments may be required, upon approval of the relevant authorities.
 Balcony, where applicable, shall not be enclosed unless with approved balcony screen.

0 1 2 3 4 5 6 Metres



5th Storey