

1-BEDROOM

TYPE A1S-G

49 sq m / 527 sq ft

INCLUSIVE OF 5 SQM PES

@ 2 SQM AC LEDGE

TOWER 3

UNIT

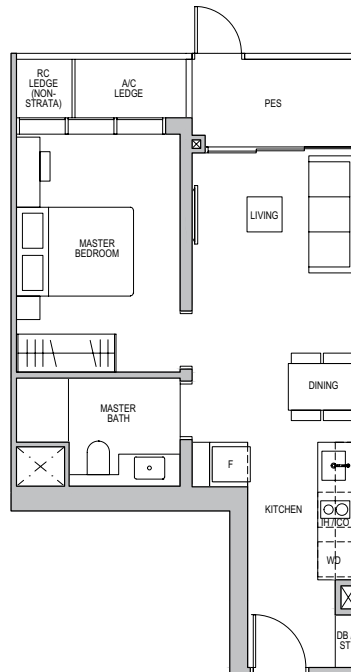
#04-04

#04-07

TOWER 7

UNIT

#04-26



LEGEND (where applicable) :

F - Fridge

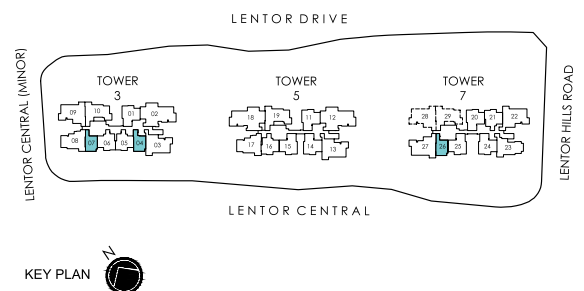
IH - Induction Hob

CO - Convection Oven

WD - Washer Dryer

DB - Distribution Board

ST - Store



1-BEDROOM

TYPE A1S

49 sq m / 527 sq ft

INCLUSIVE OF 5 SQM BALCONY

Ø 2 SQM AC LEDGE

TOWER 3

UNIT

#05-04 TO #25-04

#05-07 TO #25-07

TOWER 7

UNIT

#05-26 TO #25-26



EXCLUDING LEVEL 14



LEGEND (where applicable) :

F - Fridge

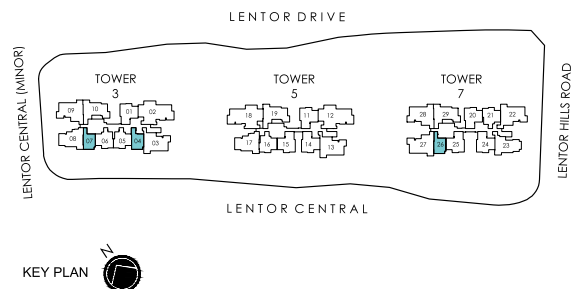
IH - Induction Hob

CO - Convection Oven

WD - Washer Dryer

DB - Distribution Board

ST - Store



2-BEDROOM + FLEX

TYPE B1-G

63 sq m / 678 sq ft

INCLUSIVE OF 5 SQM PES

@ 3 SQM AC LEDGE

TOWER 3

UNIT

#04-05*

#04-06

TOWER 5

UNIT

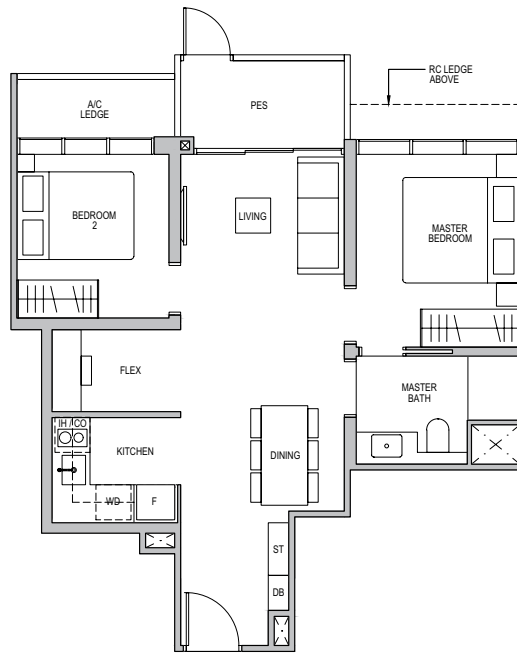
#04-16*

TOWER 7

UNIT

#04-21

* MIRROR IMAGE



LEGEND (where applicable) :

F - Fridge

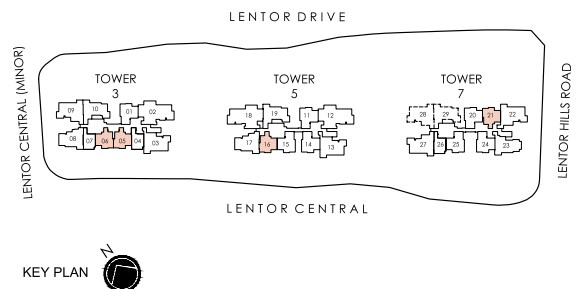
IH - Induction Hob

CO - Convection Oven

WD - Washer Dryer

DB - Distribution Board

ST - Store



2-BEDROOM + FLEX

TYPE B1

63 sq m / 678 sq ft

INCLUSIVE OF 5 SQM BALCONY

@ 3 SQM AC LEDGE

TOWER 3

UNIT

#05-05 TO #23-05*

#05-06 TO #23-06

TOWER 5

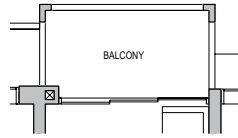
UNIT

#05-16 TO #23-16*

TOWER 7

UNIT

#05-21 TO #23-21



APPLICABLE TO TYPE B1-R

TYPE B1-R

63 sq m / 678 sq ft

INCLUSIVE OF 5 SQM BALCONY

@ 3 SQM AC LEDGE

TOWER 3

UNIT

#24-05* TO #25-05*

#24-06 TO #25-06

TOWER 5

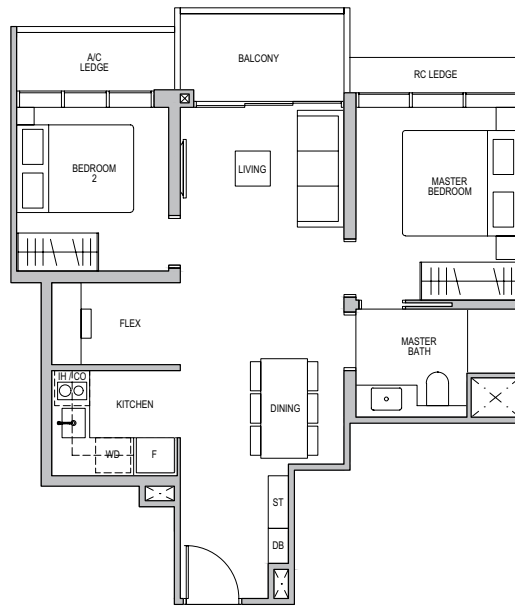
UNIT

#24-16* TO #25-16*

TOWER 7

UNIT

#24-21 TO #25-21



EXCLUDING LEVEL 14

* MIRROR IMAGE

0 1 3 5m

LEGEND (where applicable) :

F - Fridge

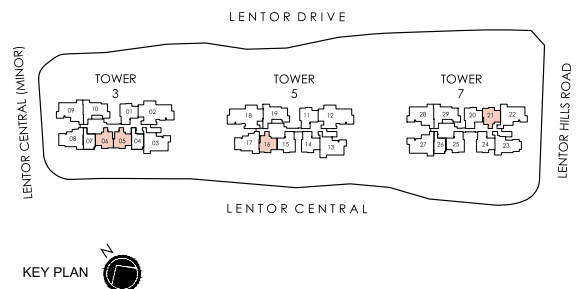
IH - Induction Hob

CO - Convection Oven

WD - Washer Dryer

DB - Distribution Board

ST - Store



2-BEDROOM + FLEX

TYPE B2-G

68 sq m / 732 sq ft

INCLUSIVE OF 5 SQM PES

@ 3 SQM AC LEDGE

TOWER 3

UNIT

#04-01

TOWER 5

UNIT

#04-11

#04-14*

#04-15

TOWER 7

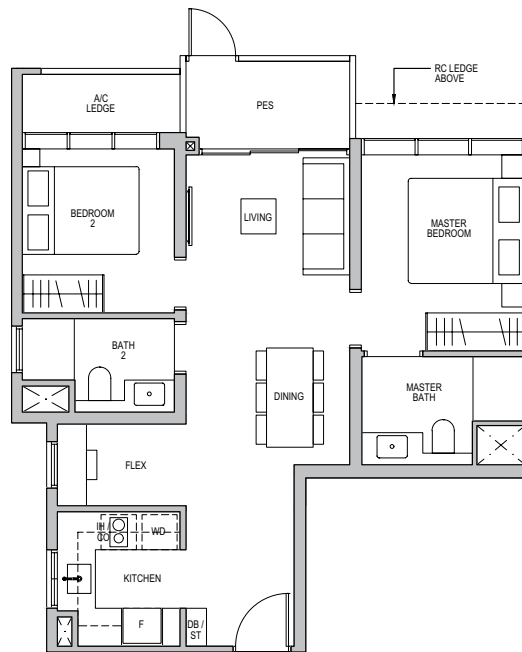
UNIT

#04-20

#04-24*

#04-25

* MIRROR IMAGE



LEGEND (where applicable) :

F - Fridge

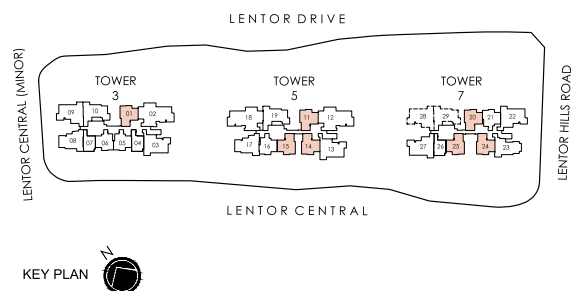
IH - Induction Hob

CO - Convection Oven

WD - Washer Dryer

DB - Distribution Board

ST - Store



2-BEDROOM + FLEX

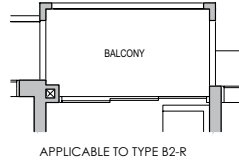
TYPE B2

68 sq m / 732 sq ft
 INCLUSIVE OF 5 SQM BALCONY
 @ 3 SQM AC LEDGE

TOWER 3
 UNIT
 #05-01 TO #23-01

TOWER 5
 UNIT
 #05-11 TO #23-11
 #05-14* TO #23-14*
 #05-15 TO #23-15

TOWER 7
 UNIT
 #05-20 TO #23-20
 #05-24* TO #23-24*
 #05-25 TO #23-25



TYPE B2-R

68 sq m / 732 sq ft
 INCLUSIVE OF 5 SQM BALCONY
 @ 3 SQM AC LEDGE

TOWER 3
 UNIT
 #24-01 TO #25-01

TOWER 5
 UNIT
 #24-11 TO #25-11
 #24-14* TO #25-14*
 #24-15 TO #25-15

TOWER 7
 UNIT
 #24-20 TO #25-20
 #24-24* TO #25-24*
 #24-25 TO #25-25

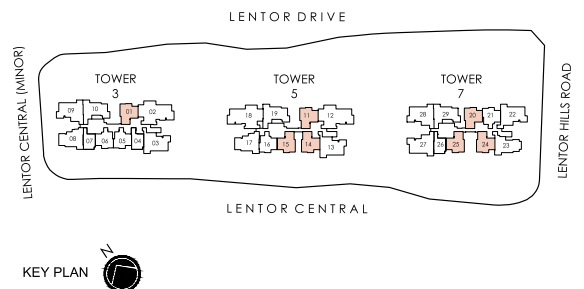


* MIRROR IMAGE



LEGEND (where applicable) :

- F - Fridge
- IH - Induction Hob
- CO - Convection Oven
- WD - Washer Dryer
- DB - Distribution Board
- ST - Store



3-BEDROOM + FLEX

TYPE C1-G

90 sq m/ 969 sq ft

INCLUSIVE OF 6 SQM PES

@ 5 SQM AC LEDGE

TOWER 3

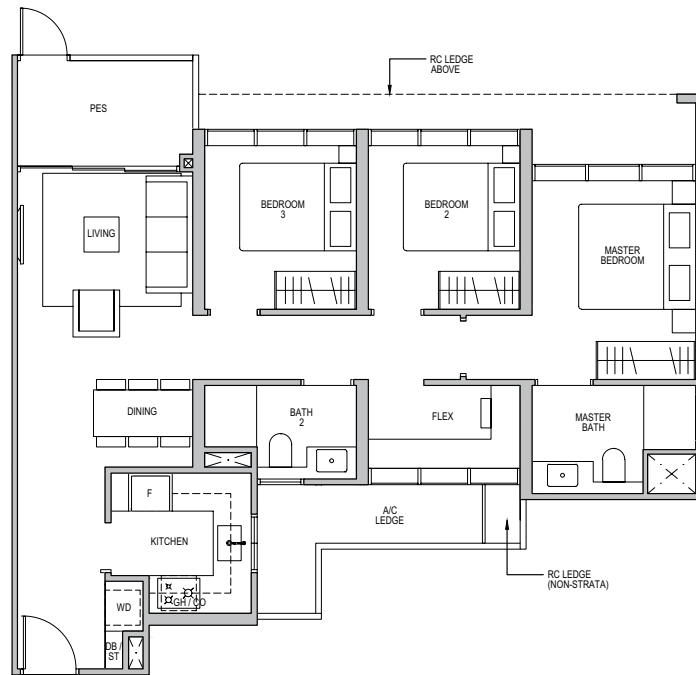
UNIT

#04-08

TOWER 5

UNIT

#04-17



LEGEND (where applicable) :

F - Fridge

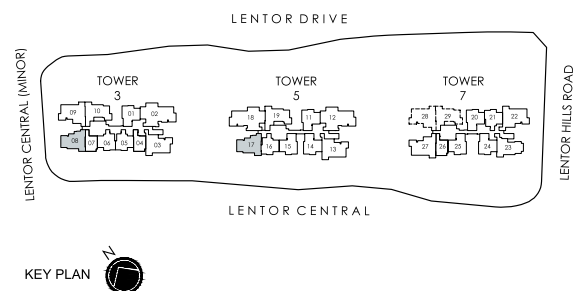
GH - Gas Hob

CO - Convection Oven

WD - Washer Dryer

DB - Distribution Board

ST - Store



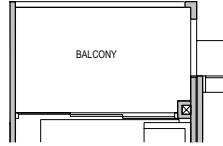
3-BEDROOM + FLEX

TYPE C1

90 sq m/ 969 sq ft
 INCLUSIVE OF 6 SQM BALCONY
 & 5 SQM AC LEDGE

TOWER 3
 UNIT
 #05-08 TO #23-08

TOWER 5
 UNIT
 #05-17 TO #23-17



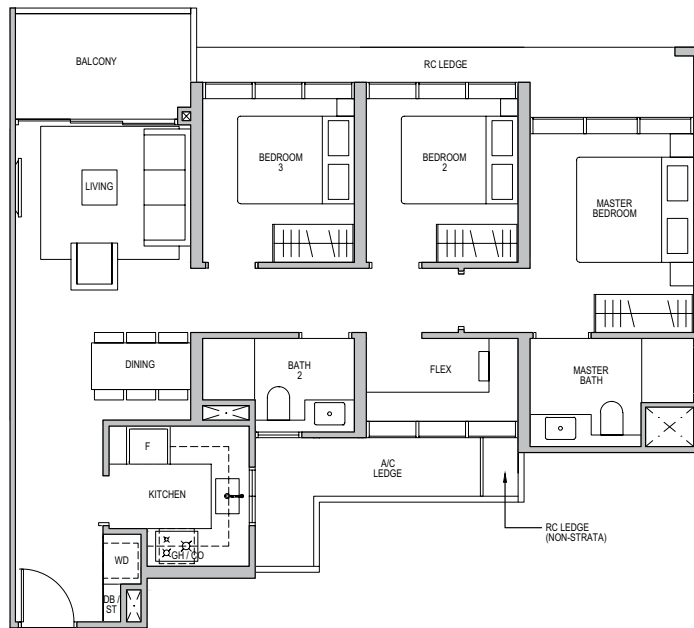
APPLICABLE TO TYPE C1-R

TYPE C1-R

90 sq m/ 969 sq ft
 INCLUSIVE OF 6 SQM BALCONY
 & 5 SQM AC LEDGE

TOWER 3
 UNIT
 #24-08 TO #25-08

TOWER 5
 UNIT
 #24-17 TO #25-17

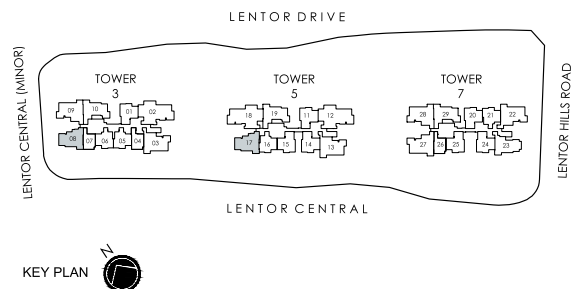


EXCLUDING LEVEL 14



LEGEND (where applicable) :

- F - Fridge
- GH - Gas Hob
- CO - Convection Oven
- WD - Washer Dryer
- DB - Distribution Board
- ST - Store



3-BEDROOM + FLEX

TYPE C2-G

91 sq m/ 980 sq ft

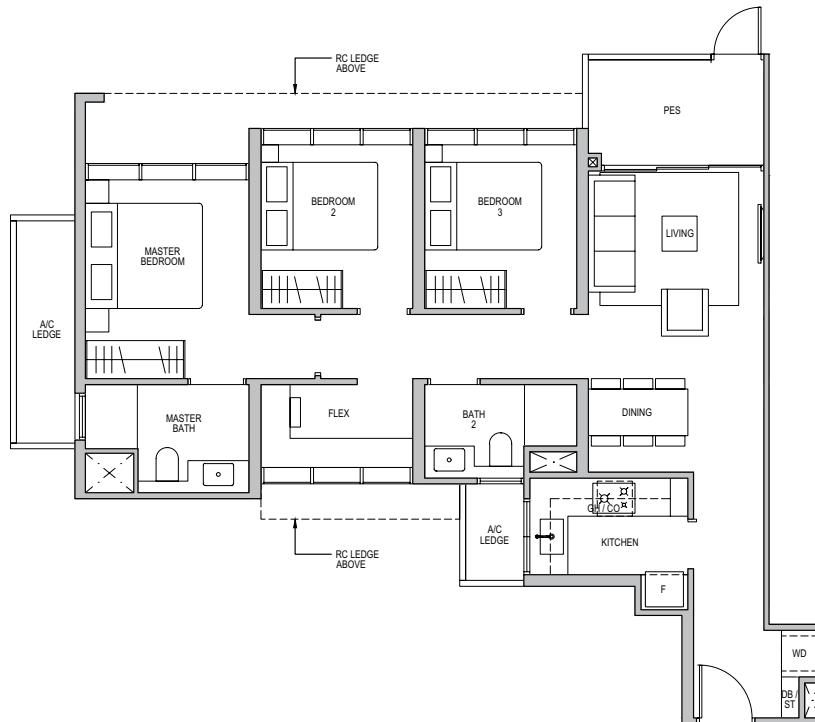
INCLUSIVE OF 6 SQM PES

Ø 6 SQM AC LEDGE

TOWER 7

UNIT

#04-23



LEGEND (where applicable) :

F - Fridge

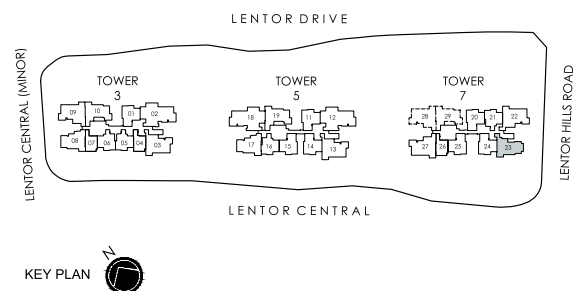
GH - Gas Hob

CO - Convection Oven

WD - Washer Dryer

DB - Distribution Board

ST - Store



3-BEDROOM + FLEX

TYPE C2

91 sq m/ 980 sq ft

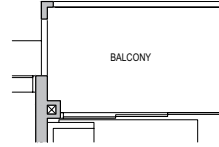
INCLUSIVE OF 6 SQM BALCONY

& 6 SQM AC LEDGE

TOWER 7

UNIT

#05-23 TO #23-23



APPLICABLE TO TYPE C2-R

TYPE C2-R

91 sq m/ 980 sq ft

INCLUSIVE OF 6 SQM BALCONY

& 6 SQM AC LEDGE

TOWER 7

UNIT

#24-23 TO #25-23



EXCLUDING LEVEL 14



LEGEND (where applicable) :

F - Fridge

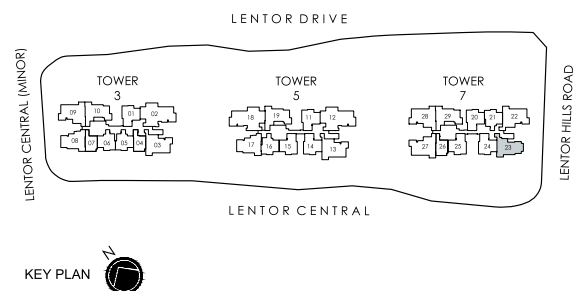
GH - Gas Hob

CO - Convection Oven

WD - Washer Dryer

DB - Distribution Board

ST - Store



3-BEDROOM + FLEX

TYPE C3-G

92 sq m / 990 sq ft

INCLUSIVE OF 6 SQM PES

@ 6 SQM AC LEDGE

TOWER 3

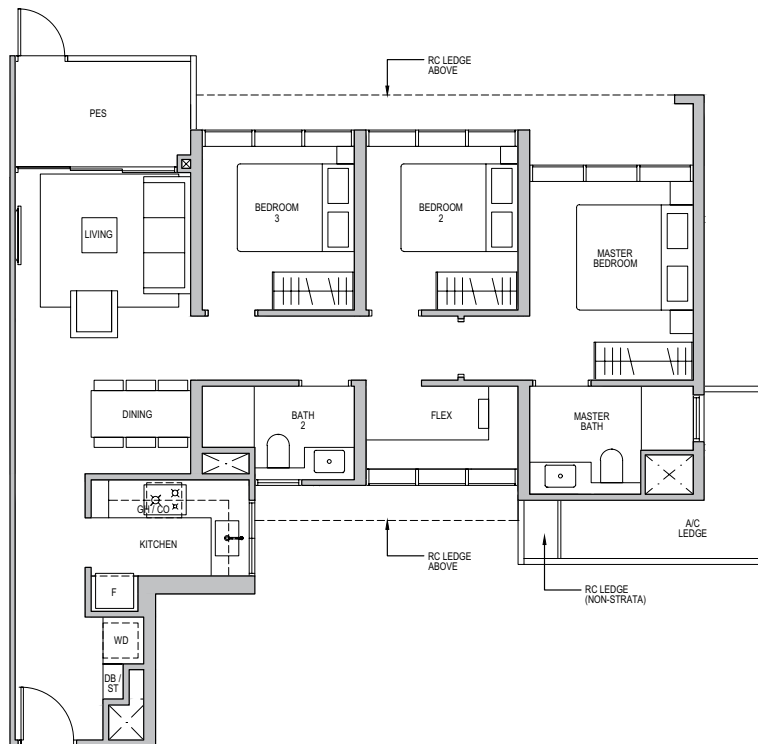
UNIT

#04-10

TOWER 5

UNIT

#04-19



LEGEND (where applicable) :

F - Fridge

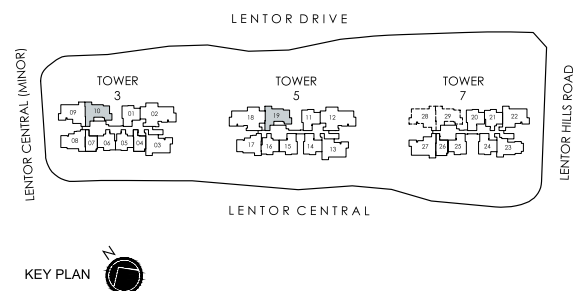
GH - Gas Hob

CO - Convection Oven

WD - Washer Dryer

DB - Distribution Board

ST - Store



3-BEDROOM + FLEX

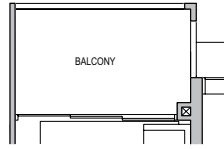
TYPE C3

92 sq m / 990 sq ft
 INCLUSIVE OF 6 SQM BALCONY
 @ 6 SQM AC LEDGE

TOWER 3
 UNIT
 #05-10 TO #23-10

TOWER 5
 UNIT
 #05-19 TO #23-19

TOWER 7
 UNIT
 #06-29 TO #23-29



APPLICABLE TO TYPE C3-R

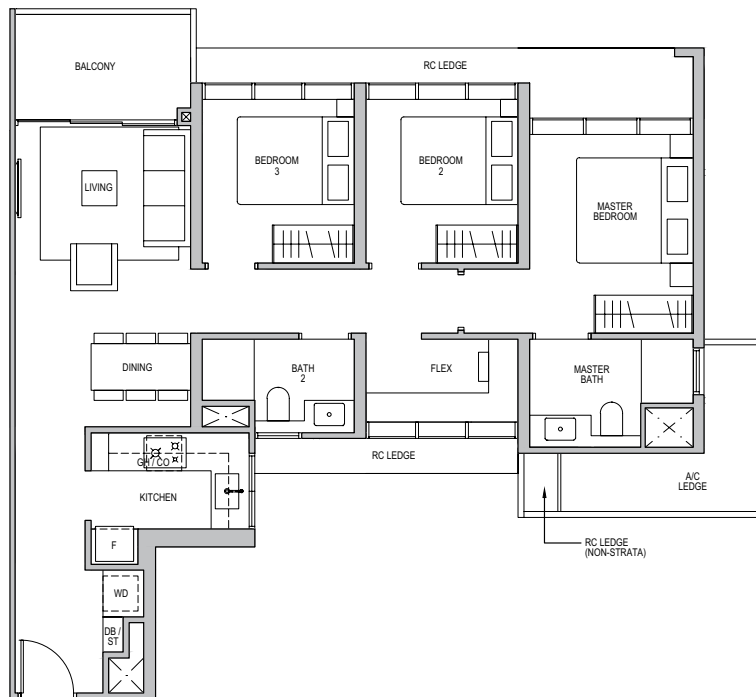
TYPE C3-R

92 sq m / 990 sq ft
 INCLUSIVE OF 6 SQM BALCONY
 @ 6 SQM AC LEDGE

TOWER 3
 UNIT
 #24-10 TO #25-10

TOWER 5
 UNIT
 #24-19 TO #25-19

TOWER 7
 UNIT
 #24-29 TO #25-29

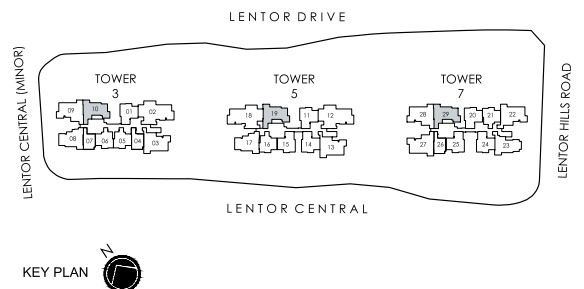


EXCLUDING LEVEL 14



LEGEND (where applicable) :

- F - Fridge
- GH - Gas Hob
- CO - Convection Oven
- WD - Washer Dryer
- DB - Distribution Board
- ST - Store



3-BEDROOM + FLEX

TYPE C4-G

103 sq m/ 1109 sq ft

INCLUSIVE OF 6 SQM PES

Ø 6 SQM AC LEDGE

TOWER 3

UNIT

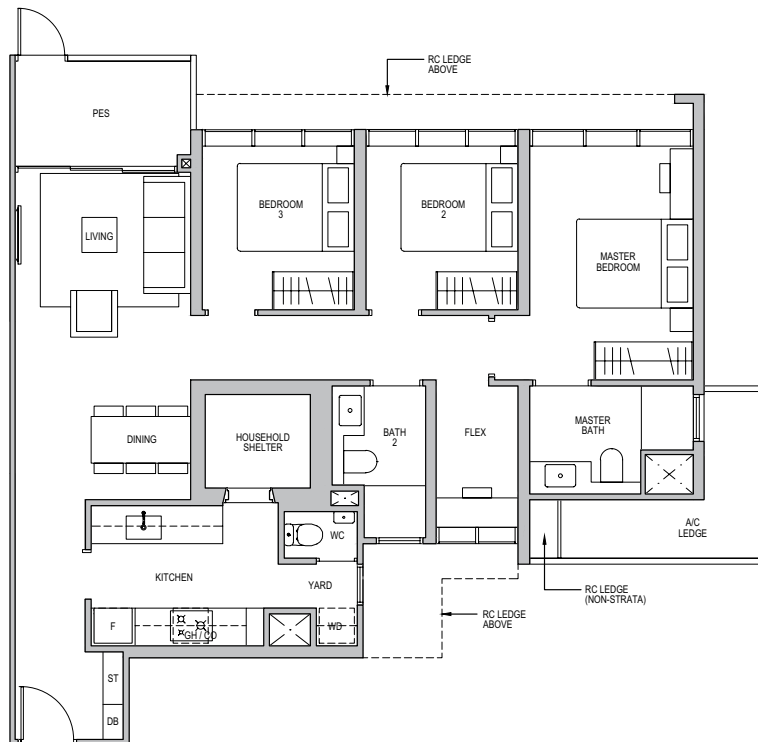
#04-09*

TOWER 7

UNIT

#04-27

* MIRROR IMAGE



LEGEND (where applicable) :

F - Fridge

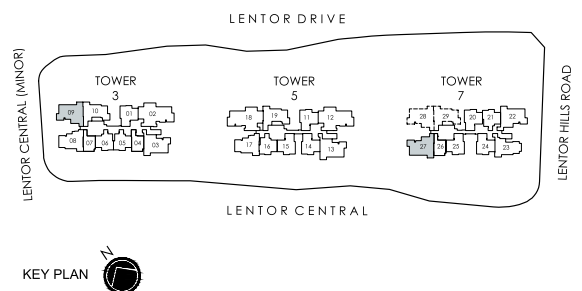
GH - Gas Hob

CO - Convection Oven

WD - Washer Dryer

DB - Distribution Board

ST - Store



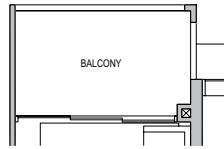
3-BEDROOM + FLEX

TYPE C4

103 sq m / 1109 sq ft
 INCLUSIVE OF 6 SQM BALCONY
 @ 6 SQM AC LEDGE

TOWER 3
 UNIT
 #05-09* TO #23-09*

TOWER 7
 UNIT
 #05-27 TO #23-27
 #06-28* TO #23-28*



APPLICABLE TO TYPE C4-R

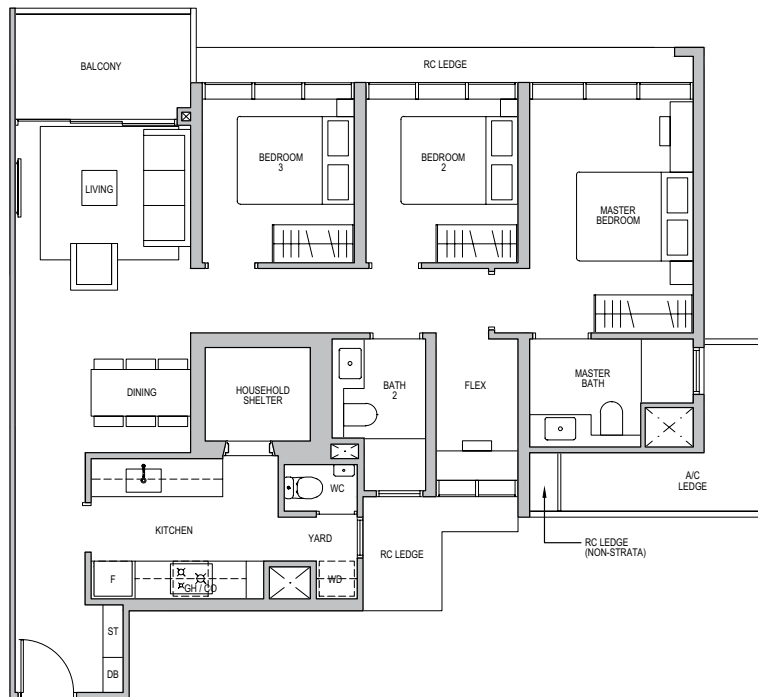
TYPE C4-R

103 sq m / 1109 sq ft
 INCLUSIVE OF 6 SQM BALCONY
 @ 6 SQM AC LEDGE

TOWER 3
 UNIT
 #24-09* TO #25-09*

TOWER 7
 UNIT
 #24-27 TO #25-27
 #24-28* TO #25-28*

* MIRROR IMAGE

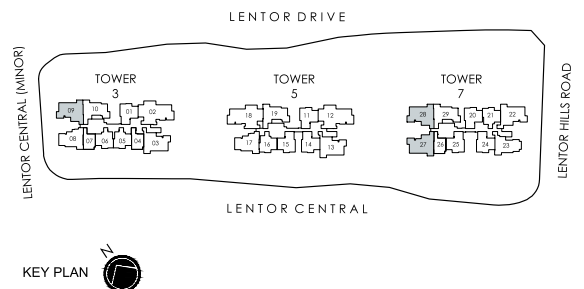


EXCLUDING LEVEL 14



LEGEND (where applicable) :

- F - Fridge
- GH - Gas Hob
- CO - Convection Oven
- WD - Washer Dryer
- DB - Distribution Board
- ST - Store



3-BEDROOM + FLEX

TYPE C5-G

105 sq m/ 1130 sq ft

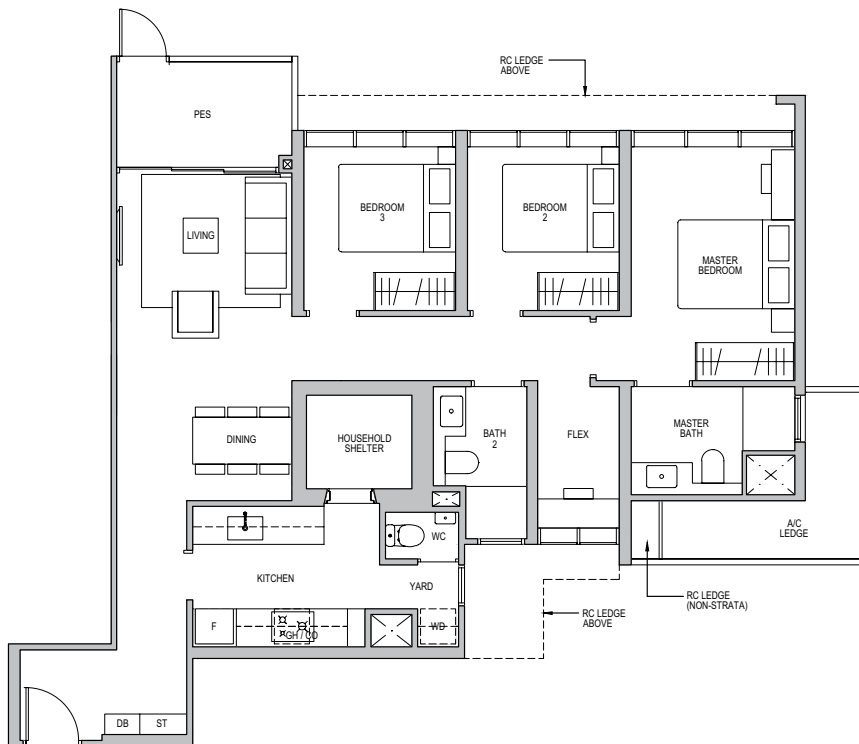
INCLUSIVE OF 6 SQM PES

Ø 6 SQM AC LEDGE

TOWER 7

UNIT

#04-22



LEGEND (where applicable) :

F - Fridge

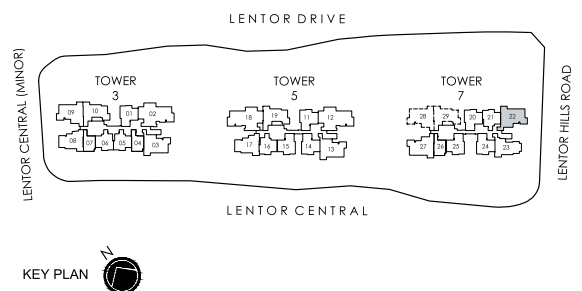
GH - Gas Hob

CO - Convection Oven

WD - Washer Dryer

DB - Distribution Board

ST - Store



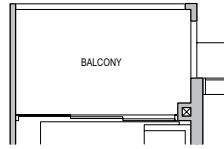
3-BEDROOM + FLEX

TYPE C5

105 sq m/ 1130 sq ft
 INCLUSIVE OF 6 SQM BALCONY
 @ 6 SQM AC LEDGE

TOWER 7

UNIT
 #05-22 TO #23-22



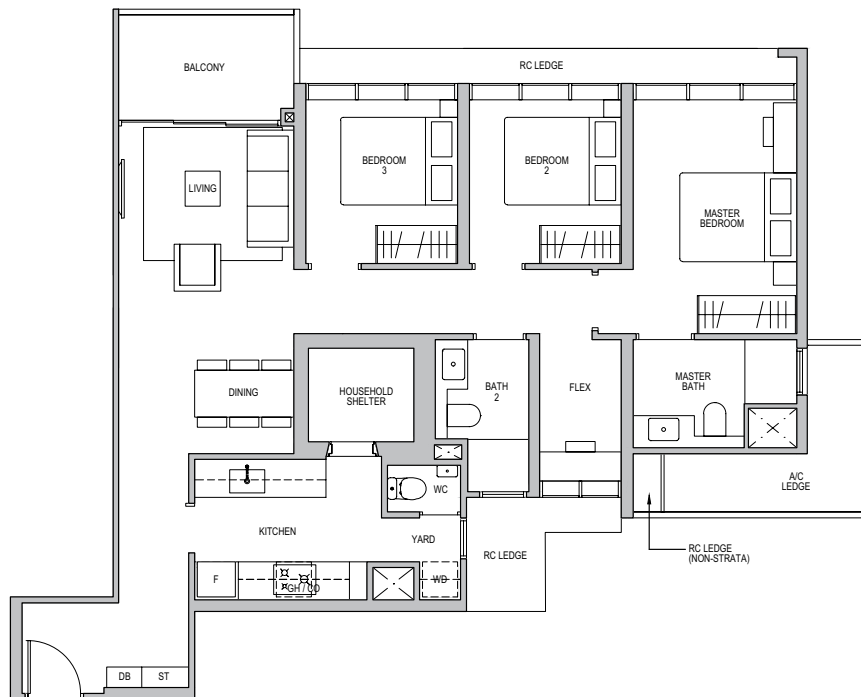
APPLICABLE TO TYPE C5-R

TYPE C5-R

105 sq m/ 1130 sq ft
 INCLUSIVE OF 6 SQM BALCONY
 @ 6 SQM AC LEDGE

TOWER 7

UNIT
 #24-22 TO #25-22

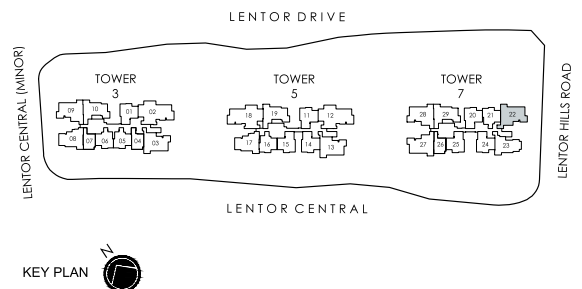


EXCLUDING LEVEL 14



LEGEND (where applicable) :

- F - Fridge
- GH - Gas Hob
- CO - Convection Oven
- WD - Washer Dryer
- DB - Distribution Board
- ST - Store



3-BEDROOM + FLEX

TYPE C6-G

105 sq m/ 1130 sq ft

INCLUSIVE OF 6 SQM PES

@ 6 SQM AC LEDGE

TOWER 3

UNIT

#04-03

TOWER 5

UNIT

#04-13



LEGEND (where applicable) :

F - Fridge

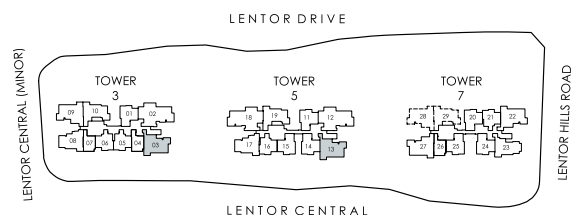
GH - Gas Hob

CO - Convection Oven

WD - Washer Dryer

DB - Distribution Board

ST - Store



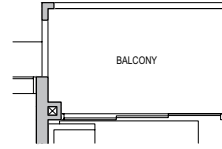
3-BEDROOM + FLEX

TYPE C6

105 sq m/ 1130 sq ft
 INCLUSIVE OF 6 SQM BALCONY
 @ 6 SQM AC LEDGE

TOWER 3
 UNIT
 #05-03 TO #23-03

TOWER 5
 UNIT
 #05-13 TO #23-13



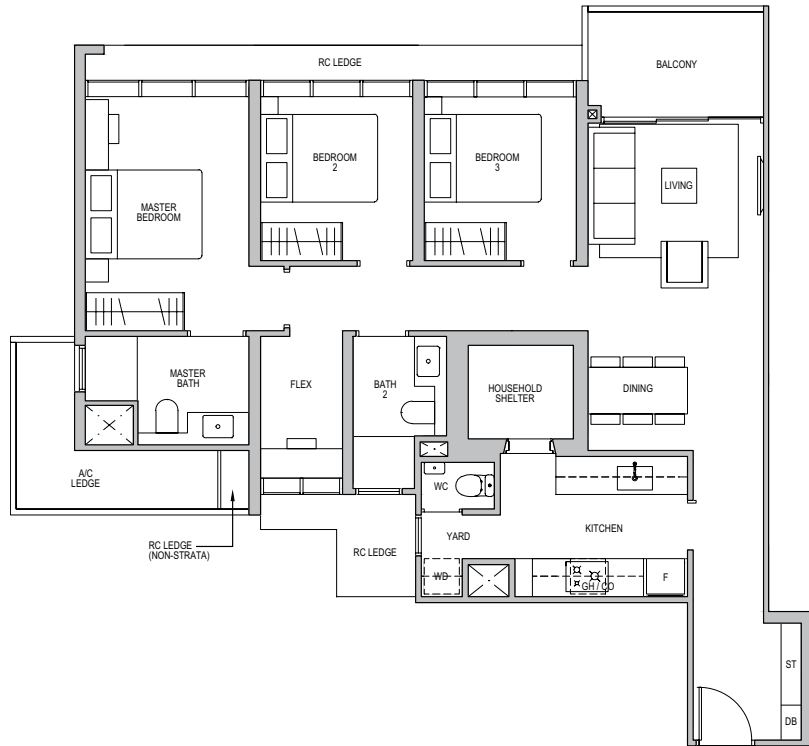
APPLICABLE TO TYPE C6-R

TYPE C6-R

105 sq m/ 1130 sq ft
 INCLUSIVE OF 6 SQM BALCONY
 @ 6 SQM AC LEDGE

TOWER 3
 UNIT
 #24-03 TO #25-03

TOWER 5
 UNIT
 #24-13 TO #25-13

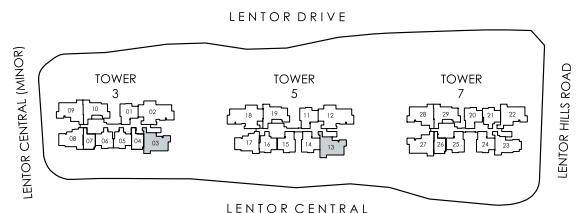


EXCLUDING LEVEL 14



LEGEND (where applicable) :

- F - Fridge
- GH - Gas Hob
- CO - Convection Oven
- WD - Washer Dryer
- DB - Distribution Board
- ST - Store



4-BEDROOM + FLEX

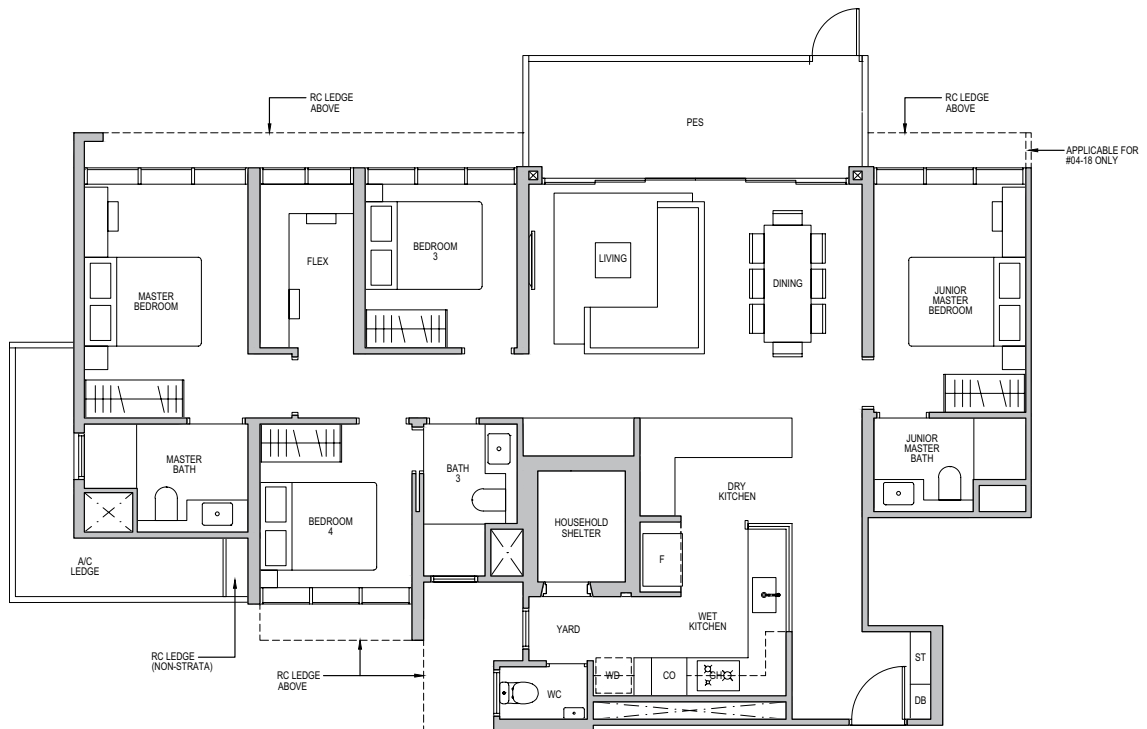
TYPE D1-G

142 sq m/ 1528 sq ft
 INCLUSIVE OF 12 SQM PES
 @ 7 SQM AC LEDGE

TOWER 3
 UNIT
 #04-02*

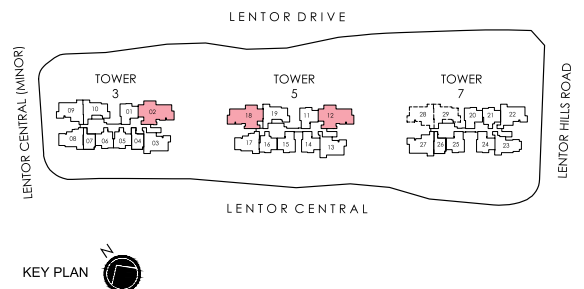
TOWER 5
 UNIT
 #04-12*
 #04-18

* MIRROR IMAGE



LEGEND (where applicable) :

- F - Fridge
- GH - Gas Hob
- CO - Convection Oven
- WD - Washer Dryer
- DB - Distribution Board
- ST - Store



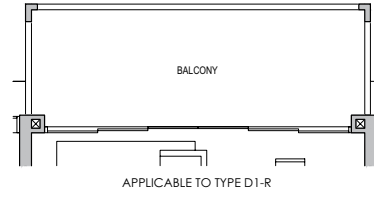
4-BEDROOM + FLEX

TYPE D1

142 sq m/ 1528 sq ft
 INCLUSIVE OF 12 SQM BALCONY
 @ 7 SQM AC LEDGE

TOWER 3
 UNIT
 #05-02* TO #23-02*

TOWER 5
 UNIT
 #05-12* TO #23-12*
 #05-18 TO #23-18



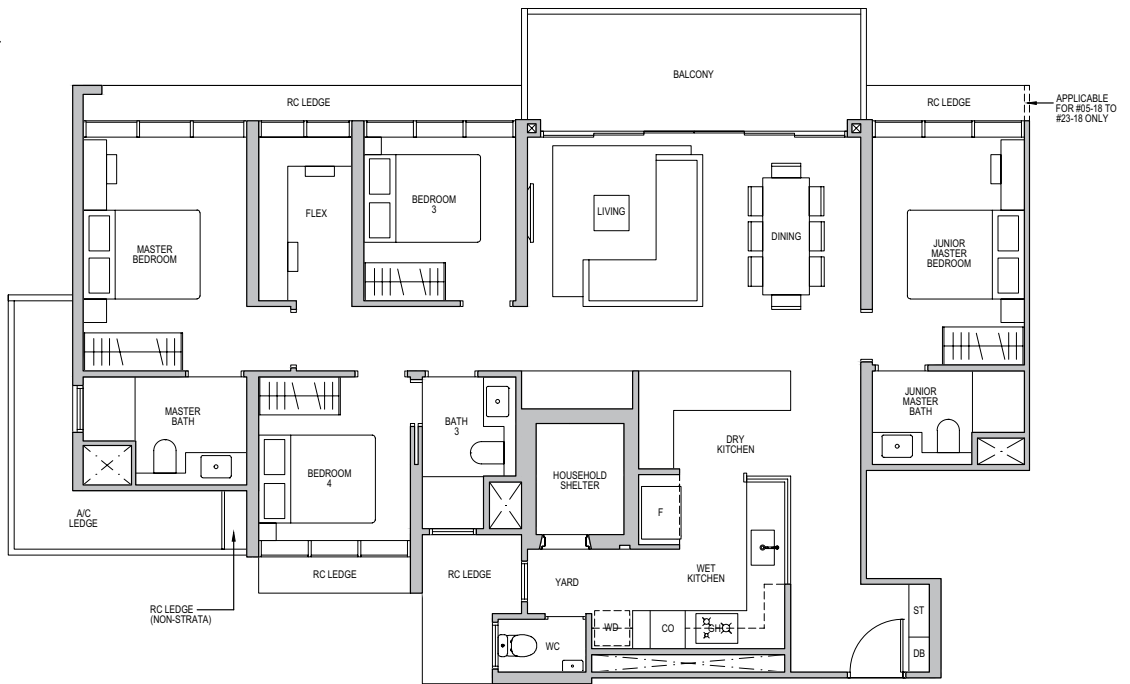
TYPE D1-R

142 sq m/ 1528 sq ft
 INCLUSIVE OF 12 SQM BALCONY
 @ 7 SQM AC LEDGE

TOWER 3
 UNIT
 #24-02 TO #25-02*

TOWER 5
 UNIT
 #24-12 TO #25-12*
 #24-18 TO #25-18

* MIRROR IMAGE

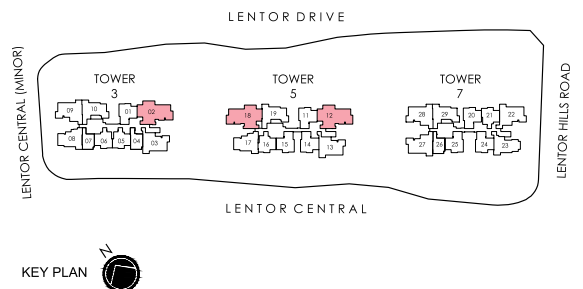


EXCLUDING LEVEL 14

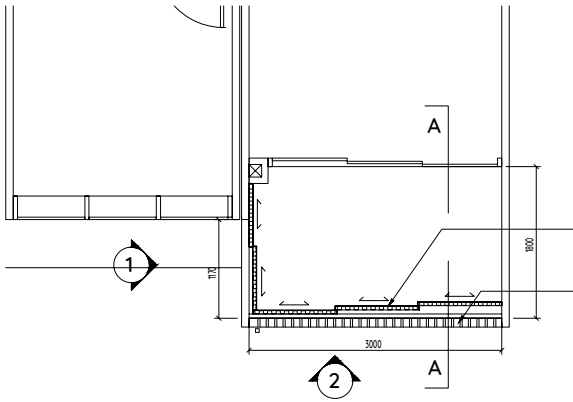


LEGEND (where applicable) :

- F - Fridge
- GH - Gas Hob
- CO - Convection Oven
- WD - Washer Dryer
- DB - Distribution Board
- ST - Store



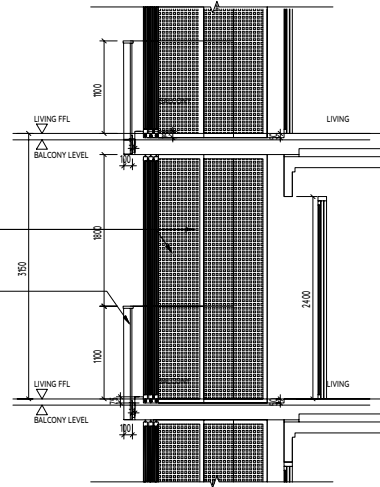
BALCONY SCREEN DETAILS



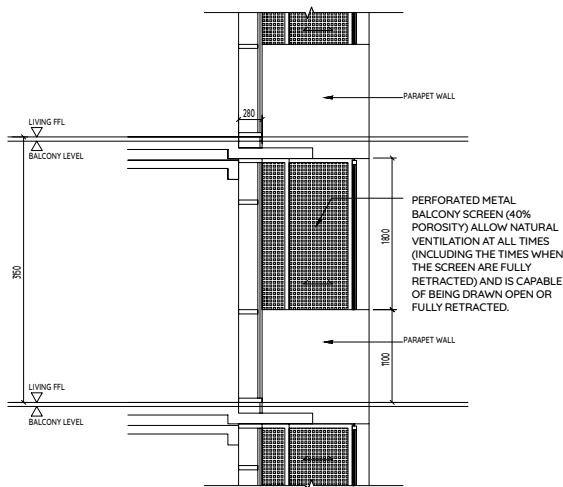
TYPICAL BALCONY SCREEN
(CLOSED) - PLAN

PERFORATED METAL BALCONY SCREEN (40% POROSITY) ALLOW NATURAL VENTILATION AT ALL TIMES (INCLUDING THE TIMES WHEN THE SCREEN ARE FULLY RETRACTED) AND IS CAPABLE OF BEING DRAWN OPEN OR FULLY RETRACTED.

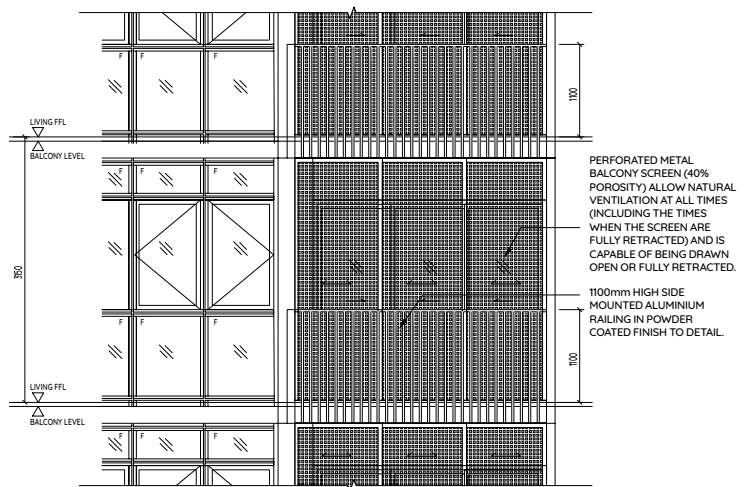
1100mm HIGH SIDE MOUNTED ALUMINIUM RAILING IN POWDER COATED FINISH TO DETAIL.



TYPICAL BALCONY SCREEN
(CLOSED) - SECTION A



TYPICAL BALCONY SCREEN
(CLOSED) - ELEVATION 1



TYPICAL BALCONY SCREEN
(CLOSED) - ELEVATION 2



NOTES:

1. BALCONY SCREEN IS NOT PROVIDED FOR THIS DEVELOPMENT.
2. THE BALCONY SHALL NOT BE ENCLOSED UNLESS WITH THE SCREEN APPROVED BY THE RELEVANT AUTHORITIES.
3. FINAL SELECTION OF MATERIAL, COLOUR AND DETAILING OF THE SCREEN IS SUBJECT TO MCST APPROVAL.
4. APPROVAL FROM MCST IS REQUIRED BEFORE INSTALLATION.
5. OWNER MAY OPT TO PRE-INSTALL THE SCREEN.
6. ALL INSTALLATION FEES TO BE BORNE BY THE OWNER.
7. MEASUREMENTS ARE APPROXIMATE ONLY AND SUBJECT TO FINAL SURVEY.

Disclaimer: This is not an "as-built" site plan. Any measurements stated or depicted in this site plan are approximate measurements and are subject to final survey.



L E N T O R
M O D E R N



Name of housing project: Lentor Modern • Name of housing developer: Lentor Modern Pte. Ltd. (Co. Reg. No. 202126398M) • Licence No. of housing developer: C1430 • Tenure of land: leasehold 99 years commencing on 26 October 2021 • Encumbrances on land: encumbered to DBS Bank Ltd. (as mortgagee) pursuant to Mortgage No. IG/953253V • Location of the housing project: Lot(s) 05354P, MK20, at Lentor Central • Expected date of vacant possession: 30 June 2028 • Expected date of legal completion: 30 June 2031

DISCLAIMER: The information and contents herein are current at the time of printing and are provided on an "as is" and "as available" basis. While all reasonable care has been taken in preparing this brochure, the developer and its agents shall not be held responsible for any inaccuracies or the completeness of the information and contents herein. All renderings, illustrations, pictures, photographs and other graphic representations and references are artist's impression(s) only and may be subject to changes and deviation as further made by the developer or as required by the relevant authorities. Nothing herein shall form part of an offer or contract or be construed as any representations by the developer or its agents. The plans drawn herein may not be to scale, and the areas and measurements stated herein are approximate and are subject to adjustments on final survey.