

TYPE A1
1-BEDROOM

Unit #02-05, #05-05 to #10-05
Area 56 Sqm / 603 Sqft



TYPE A1 - 1
1-BEDROOM (DOUBLE VOLUME)

Unit #03-05
Area 84 Sqm / 904 Sqft



TYPE A4
1-BEDROOM + STUDY

Unit #01-04
Area 84 Sqm / 904 Sqft
(including PES 27 Sqm / 291 Sqft)



TYPE A2
1-BEDROOM

Unit #02-04, #05-04 to #09-04
Area 55 Sqm / 592 Sqft



TYPE A2 - 1
1-BEDROOM (DOUBLE VOLUME)

Unit #03-04
Area 81 Sqm / 872 Sqft



TYPE A5
1-BEDROOM

Unit #01-05
Area 80 Sqm / 861 Sqft
(including PES / Planter 25 Sqm / 269 Sqft)



TYPE A3
1-BEDROOM + STUDY

Unit #02-03, #05-03 to #09-03
Area 66 Sqm / 710 Sqft



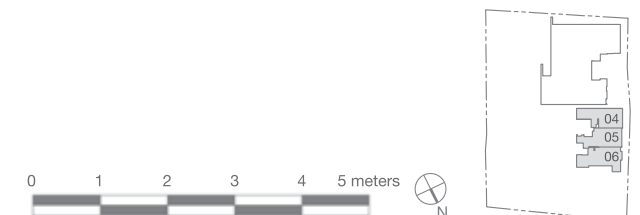
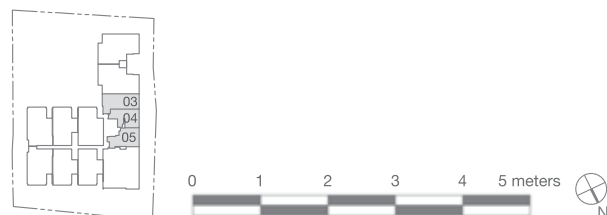
TYPE A3 - 1
1-BEDROOM + STUDY (DOUBLE VOLUME)

Unit #03-03
Area 98 Sqm / 1055 Sqft



TYPE A6
1-BEDROOM

Unit #01-06
Area 92 Sqm / 990 Sqft
(including PES / Planter 27 Sqm / 291 Sqft)



TYPE B1 - 01
2-BEDROOM + STUDY

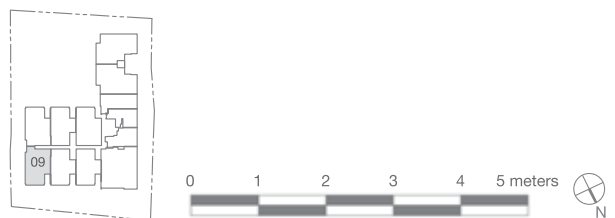
Unit #02-09 to #08-09
Area 170 Sqm / 1830 Sqft



UPPER STOREY



LOWER STOREY



The plans are for general guidance only and subject to changes as may be approved by the relevant authority. The floor plans are approximate measurements and subject to final survey.
BP Approval Nos.: A1002-00003-2011-BP01 Dated 30 April 2012, A1002-00003-2011-BP02 Dated 15 October 2012 & A1002-00003-2011-BP03 Dated 11 February 2016

TYPE B1 - 02
2-BEDROOM + STUDY

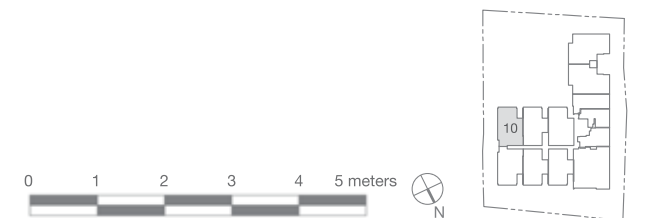
Unit #02-10 to #08-10
Area 171 Sqm / 1840 Sqft



UPPER STOREY



LOWER STOREY



The plans are for general guidance only and subject to changes as may be approved by the relevant authority. The floor plans are approximate measurements and subject to final survey.
BP Approval Nos.: A1002-00003-2011-BP01 Dated 30 April 2012, A1002-00003-2011-BP02 Dated 15 October 2012 & A1002-00003-2011-BP03 Dated 11 February 2016

TYPE B2 - 01
2-BEDROOM + STUDY

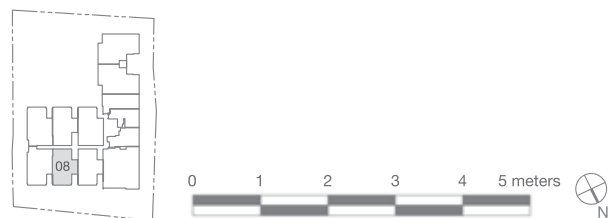
Unit #02-08 to #08-08
Area 168 Sqm / 1808 Sqft



UPPER STOREY



LOWER STOREY



The plans are for general guidance only and subject to changes as may be approved by the relevant authority. The floor plans are approximate measurements and subject to final survey.
BP Approval Nos.: A1002-00003-2011-BP01 Dated 30 April 2012, A1002-00003-2011-BP02 Dated 15 October 2012 & A1002-00003-2011-BP03 Dated 11 February 2016

TYPE B2 - 02
2-BEDROOM + STUDY

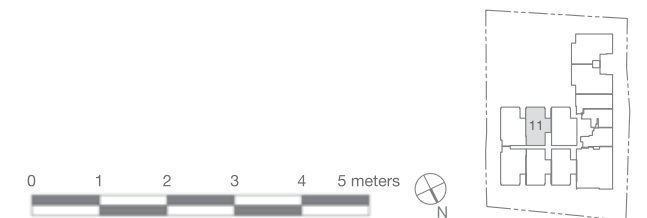
Unit #02-11 to #08-11
Area 169 Sqm / 1819 Sqft



UPPER STOREY



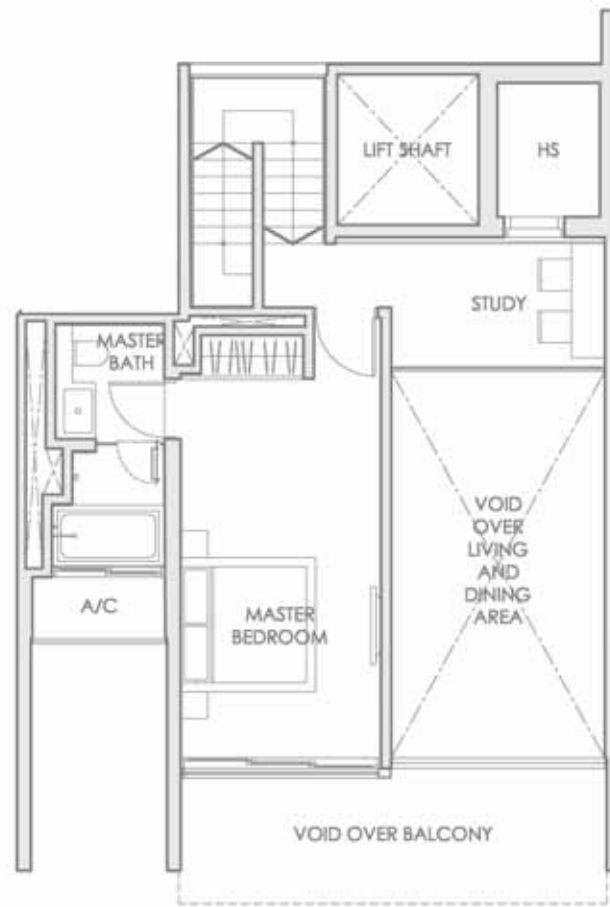
LOWER STOREY



The plans are for general guidance only and subject to changes as may be approved by the relevant authority. The floor plans are approximate measurements and subject to final survey.
BP Approval Nos.: A1002-00003-2011-BP01 Dated 30 April 2012, A1002-00003-2011-BP02 Dated 15 October 2012 & A1002-00003-2011-BP03 Dated 11 February 2016

TYPE B3 - 01
2-BEDROOM + STUDY

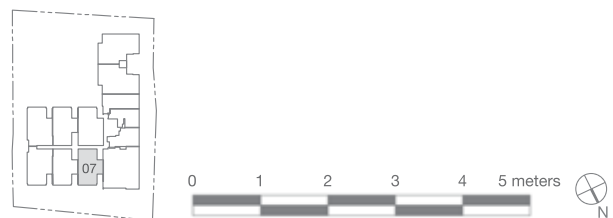
Unit #02-07 to #08-07
Area 168 Sqm / 1808 Sqft



UPPER STOREY



LOWER STOREY



The plans are for general guidance only and subject to changes as may be approved by the relevant authority. The floor plans are approximate measurements and subject to final survey.
BP Approval Nos.: A1002-00003-2011-BP01 Dated 30 April 2012, A1002-00003-2011-BP02 Dated 15 October 2012 & A1002-00003-2011-BP03 Dated 11 February 2016

TYPE B3 - 02
2-BEDROOM + STUDY

Unit #02-12 to #08-12
Area 169 Sqm / 1819 Sqft



UPPER STOREY



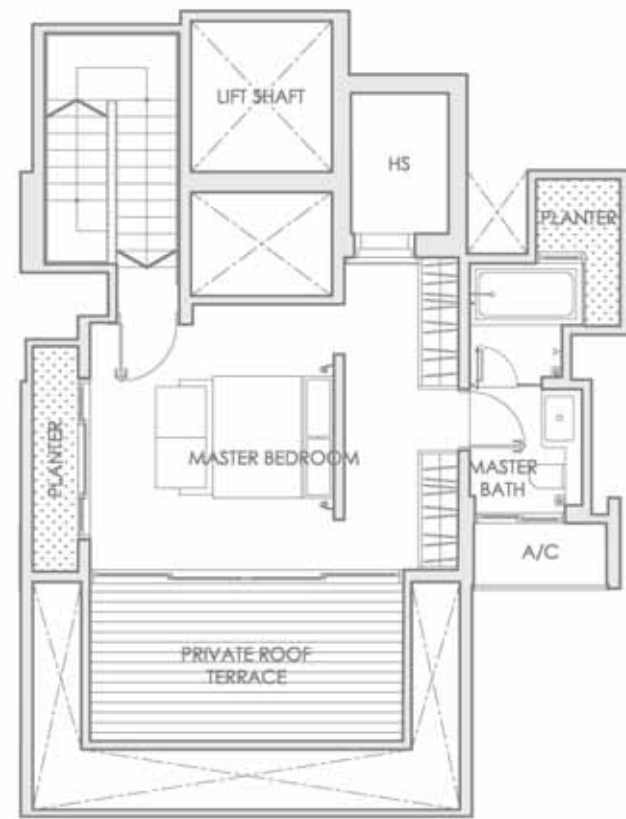
LOWER STOREY



The plans are for general guidance only and subject to changes as may be approved by the relevant authority. The floor plans are approximate measurements and subject to final survey.
BP Approval Nos.: A1002-00003-2011-BP01 Dated 30 April 2012, A1002-00003-2011-BP02 Dated 15 October 2012 & A1002-00003-2011-BP03 Dated 11 February 2016

TYPE B5 - 01
2-BEDROOM

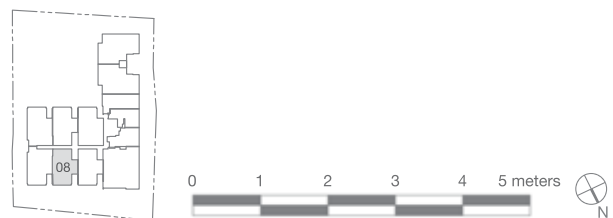
Unit #10-08
Area 149 Sqm / 1604 Sqft



UPPER STOREY



LOWER STOREY



The plans are for general guidance only and subject to changes as may be approved by the relevant authority. The floor plans are approximate measurements and subject to final survey.
BP Approval Nos.: A1002-00003-2011-BP01 Dated 30 April 2012, A1002-00003-2011-BP02 Dated 15 October 2012 & A1002-00003-2011-BP03 Dated 11 February 2016

TYPE B5 - 02
2-BEDROOM

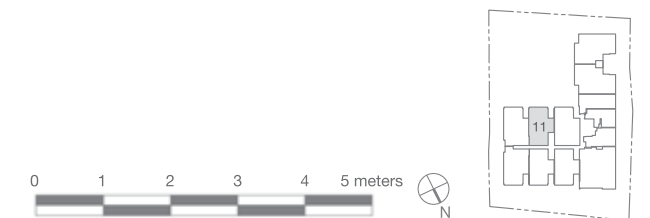
Unit #10-11
Area 159 Sqm / 1711 Sqft



UPPER STOREY



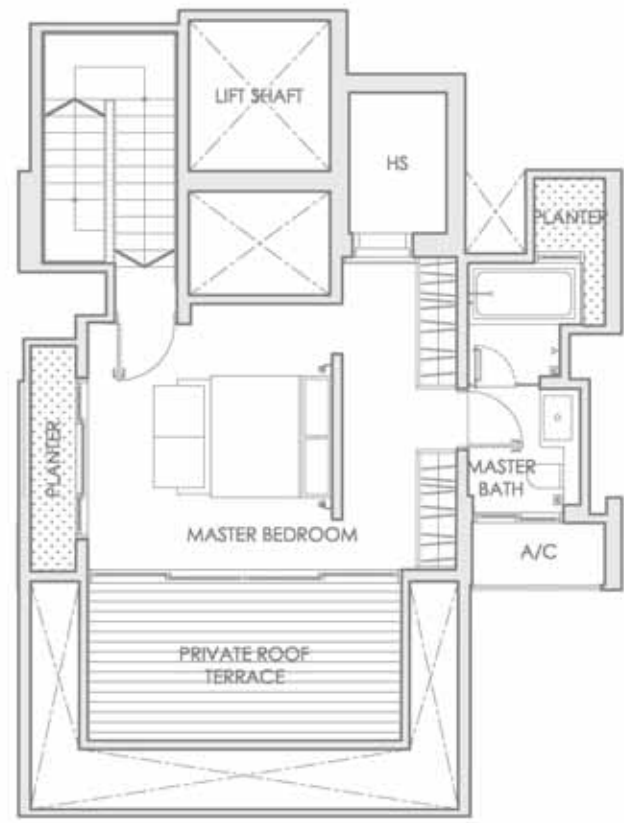
LOWER STOREY



The plans are for general guidance only and subject to changes as may be approved by the relevant authority. The floor plans are approximate measurements and subject to final survey.
BP Approval Nos.: A1002-00003-2011-BP01 Dated 30 April 2012, A1002-00003-2011-BP02 Dated 15 October 2012 & A1002-00003-2011-BP03 Dated 11 February 2016

TYPE B6 - 01
2-BEDROOM

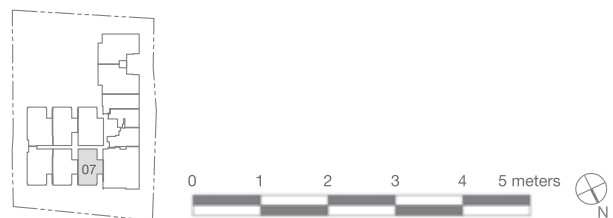
Unit #10-07
Area 149 Sqm / 1604 Sqft



UPPER STOREY



LOWER STOREY



The plans are for general guidance only and subject to changes as may be approved by the relevant authority. The floor plans are approximate measurements and subject to final survey.
BP Approval Nos.: A1002-00003-2011-BP01 Dated 30 April 2012, A1002-00003-2011-BP02 Dated 15 October 2012 & A1002-00003-2011-BP03 Dated 11 February 2016

TYPE B6 - 02
2-BEDROOM

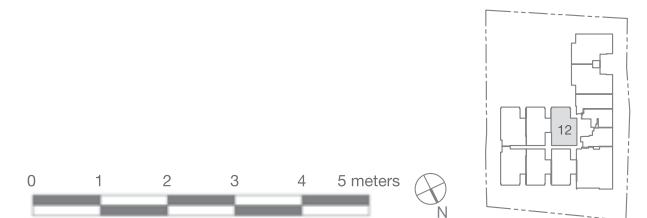
Unit #10-12
Area 158 Sqm / 1701 Sqft



UPPER STOREY



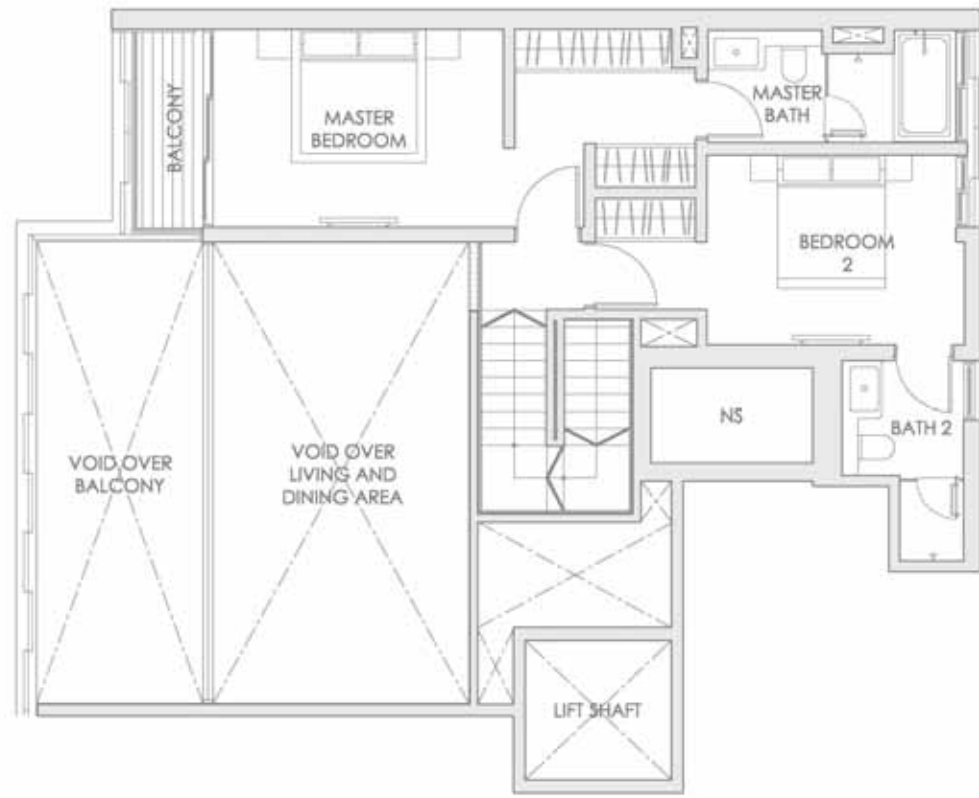
LOWER STOREY



The plans are for general guidance only and subject to changes as may be approved by the relevant authority. The floor plans are approximate measurements and subject to final survey.
BP Approval Nos.: A1002-00003-2011-BP01 Dated 30 April 2012, A1002-00003-2011-BP02 Dated 15 October 2012 & A1002-00003-2011-BP03 Dated 11 February 2016

TYPE C1 - 01
3-BEDROOM

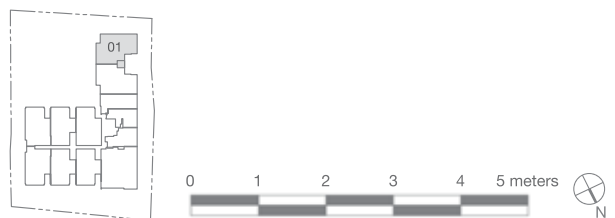
Unit #02-01 to #08-01
Area 225 Sqm / 2422 Sqft



UPPER STOREY



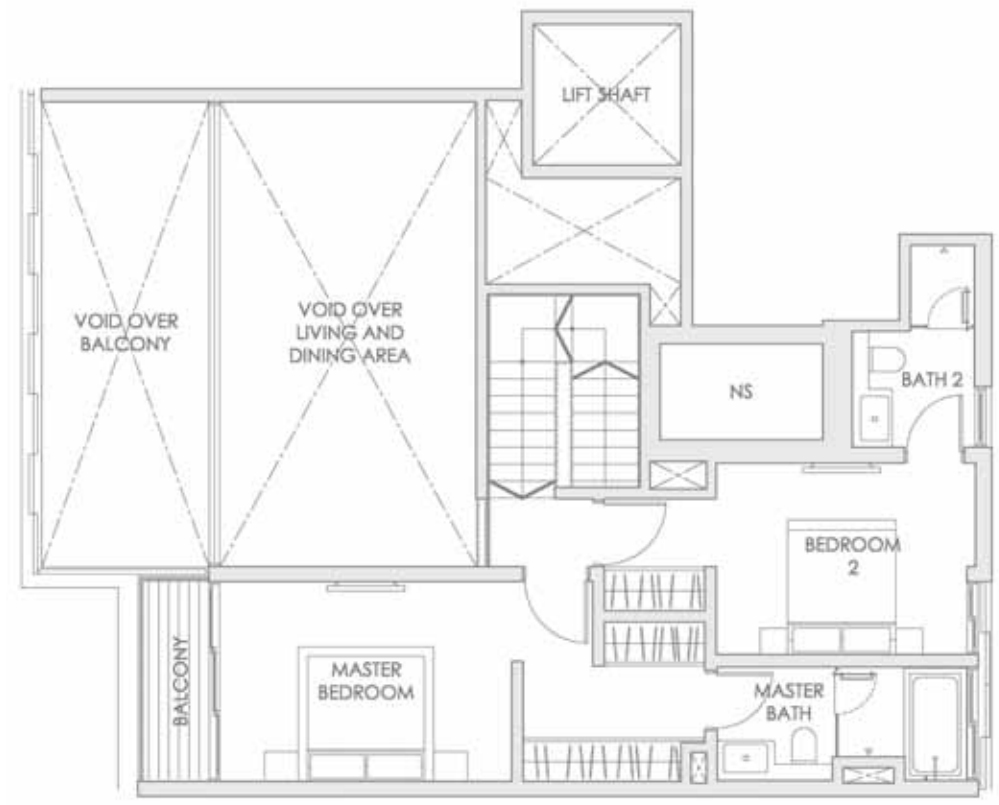
LOWER STOREY



The plans are for general guidance only and subject to changes as may be approved by the relevant authority. The floor plans are approximate measurements and subject to final survey.
BP Approval Nos.: A1002-00003-2011-BP01 Dated 30 April 2012, A1002-00003-2011-BP02 Dated 15 October 2012 & A1002-00003-2011-BP03 Dated 11 February 2016

TYPE C1 - 02
3-BEDROOM

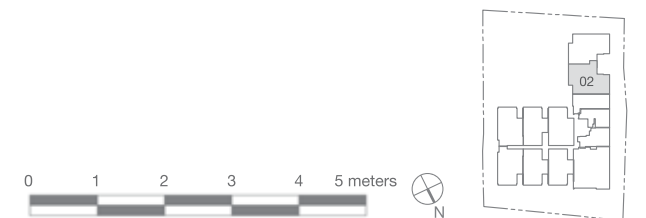
Unit #02-02 to #08-02
Area 225 Sqm / 2422 Sqft



UPPER STOREY



LOWER STOREY



The plans are for general guidance only and subject to changes as may be approved by the relevant authority. The floor plans are approximate measurements and subject to final survey.
BP Approval Nos.: A1002-00003-2011-BP01 Dated 30 April 2012, A1002-00003-2011-BP02 Dated 15 October 2012 & A1002-00003-2011-BP03 Dated 11 February 2016

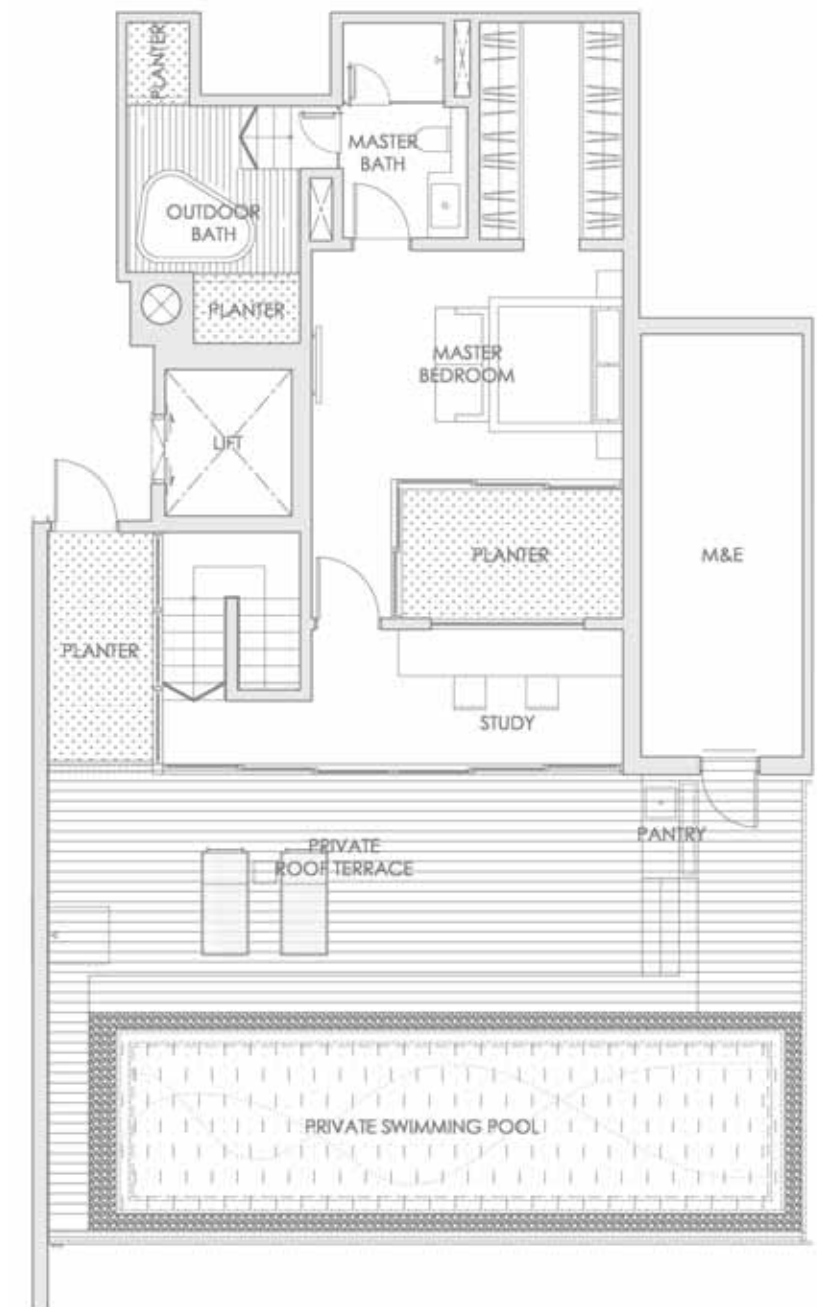
TYPE C2
3-BEDROOM

Unit #02-06 to #09-06
Area 161 Sqm / 1733 Sqft

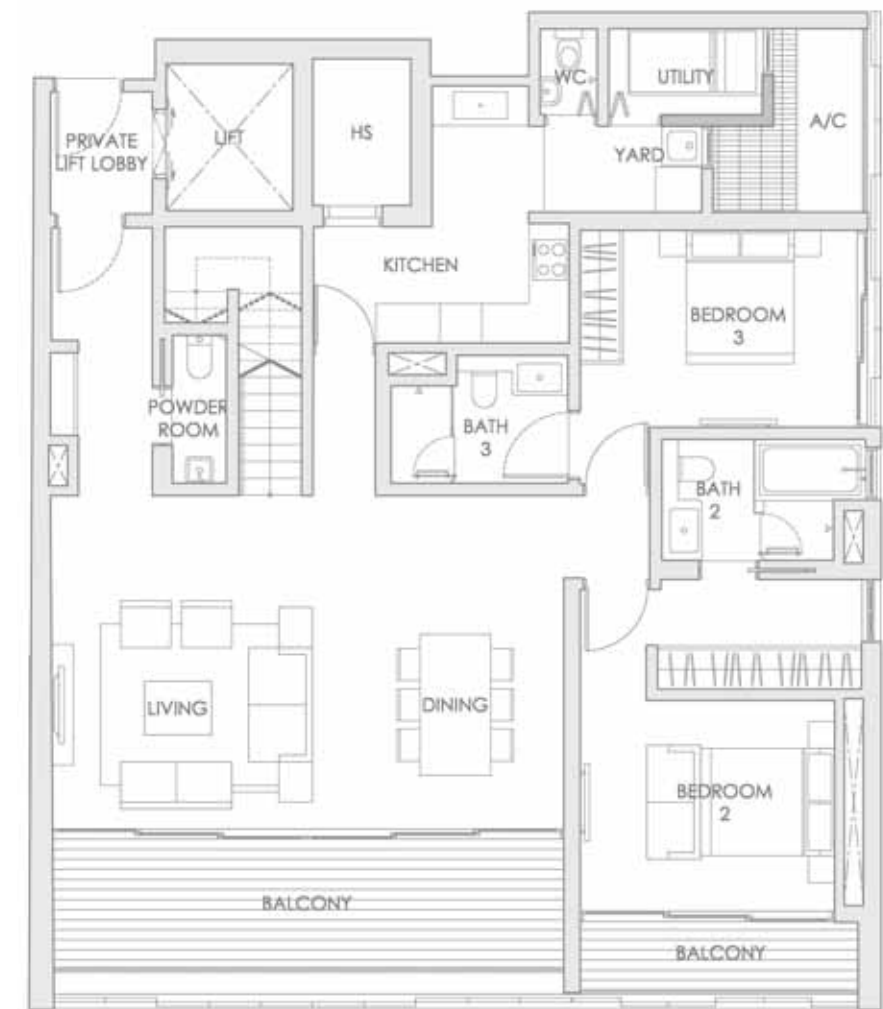


TYPE C3
3-BEDROOM

Unit #10-06
Area 338 Sqm / 3638 Sqft



UPPER STOREY



LOWER STOREY

