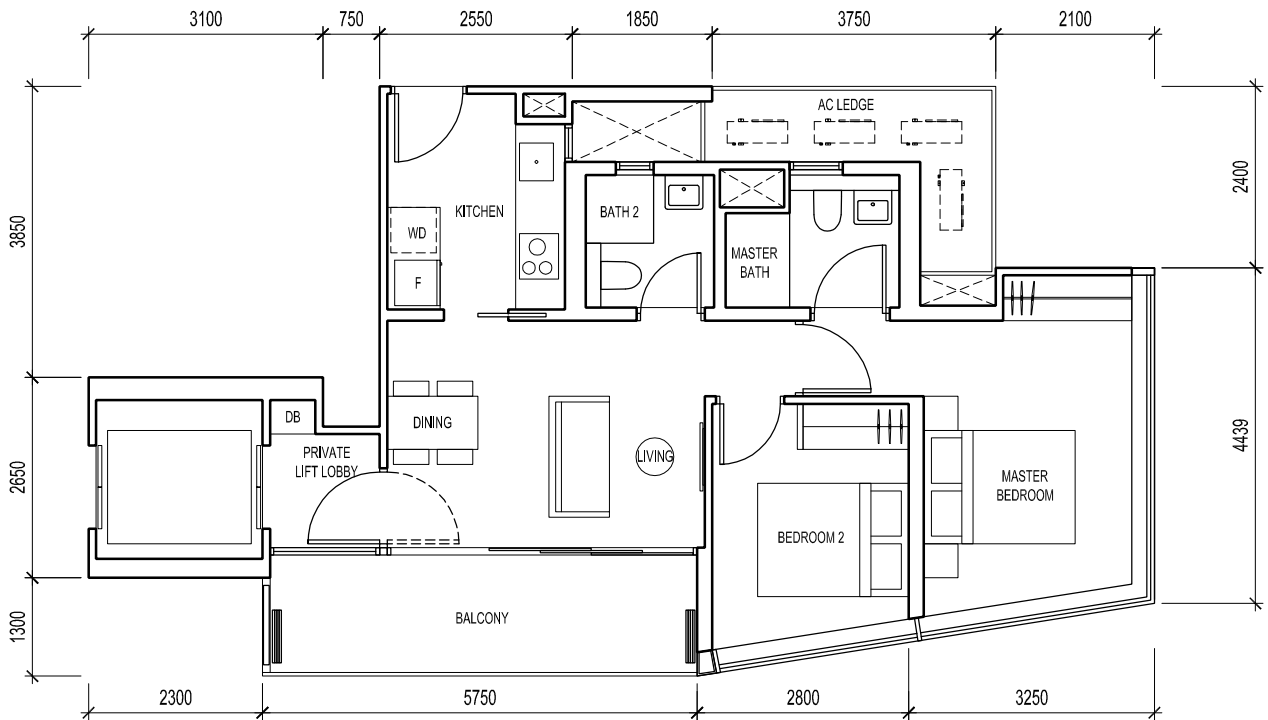


Type A1

2-Bedroom + Private Lift Lobby
74 sqm / 797 sqft

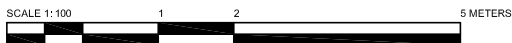
#03-01 to #17-01



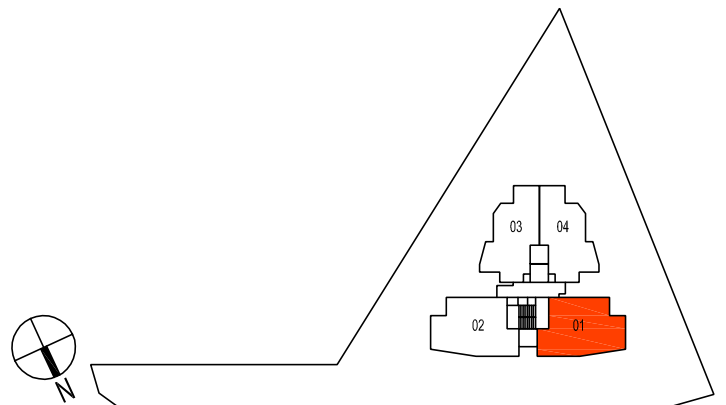
Please note that this floor plan is subject to changes that may be necessary or approved by the relevant authorities. As such, the Developer will not be liable for any claims, losses, expenses of whatever nature that may be suffered by the purchasers' reliance on the said plan.

The Developer does not warrant the accuracy of any of the measurements shown on the floor plan and the Purchaser is advised to take on-site measurement(s) at his unit before committing to any renovation work(s) or installation or purchase of any furniture and furnishing whatsoever.

Note : *Area are subject to final survey by strata surveyor



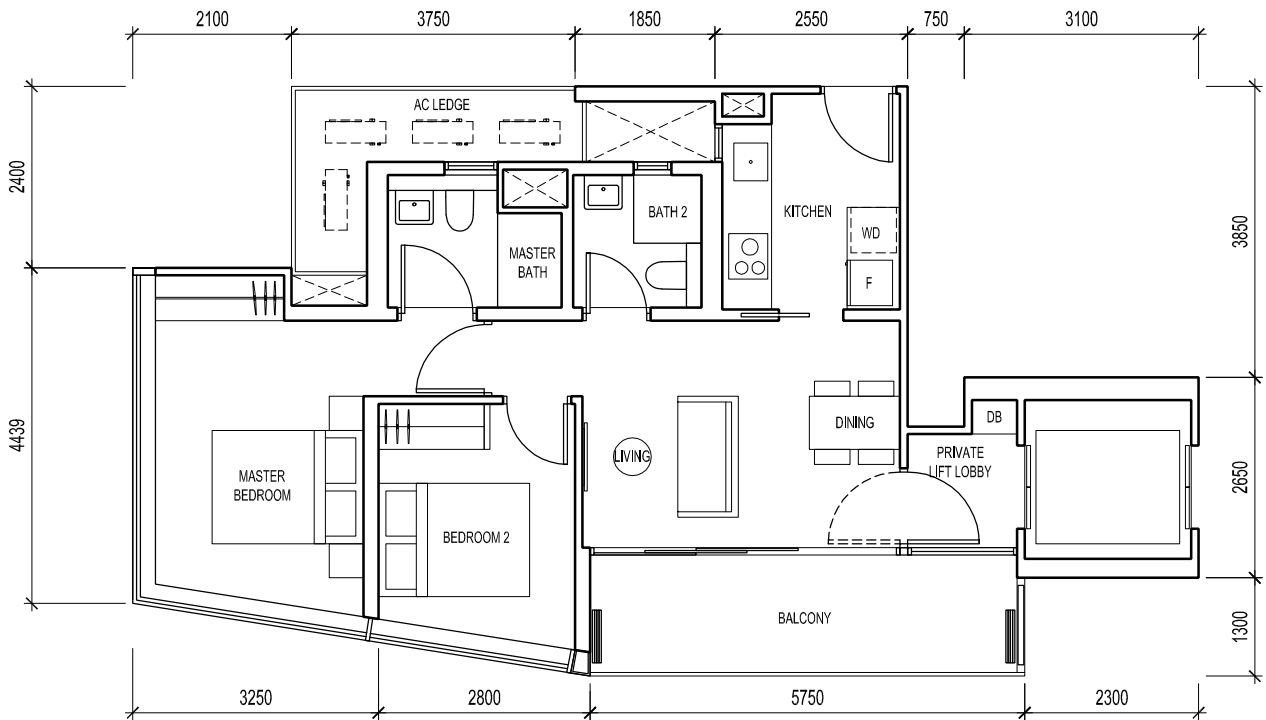
The plans are subject to change as may be required or approved by the relevant authorities.
Areas are estimates only and subject to final survey.
Plans are not drawn to scale and do not form part of the contract.



Type A2

2-Bedroom + Private Lift Lobby
74 sqm / 797 sqft

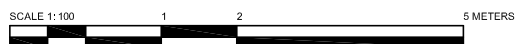
#03-02 to #17-02



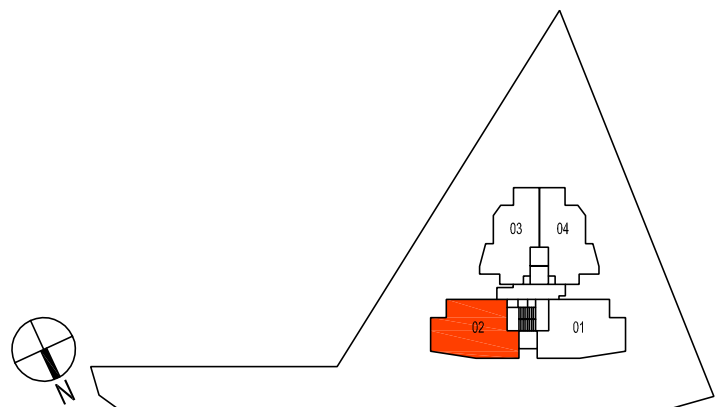
Please note that this floor plan is subject to changes that may be necessary or approved by the relevant authorities. As such, the Developer will not be liable for any claims, losses, expenses of whatever nature that may be suffered by the purchasers' reliance on the said plan.

The Developer does not warrant the accuracy of any of the measurements shown on the floor plan and the Purchaser is advised to take on-site measurement(s) at his unit before committing to any renovation work(s) or installation or purchase of any furniture and furnishing whatsoever.

Note : *Area are subject to final survey by strata surveyor



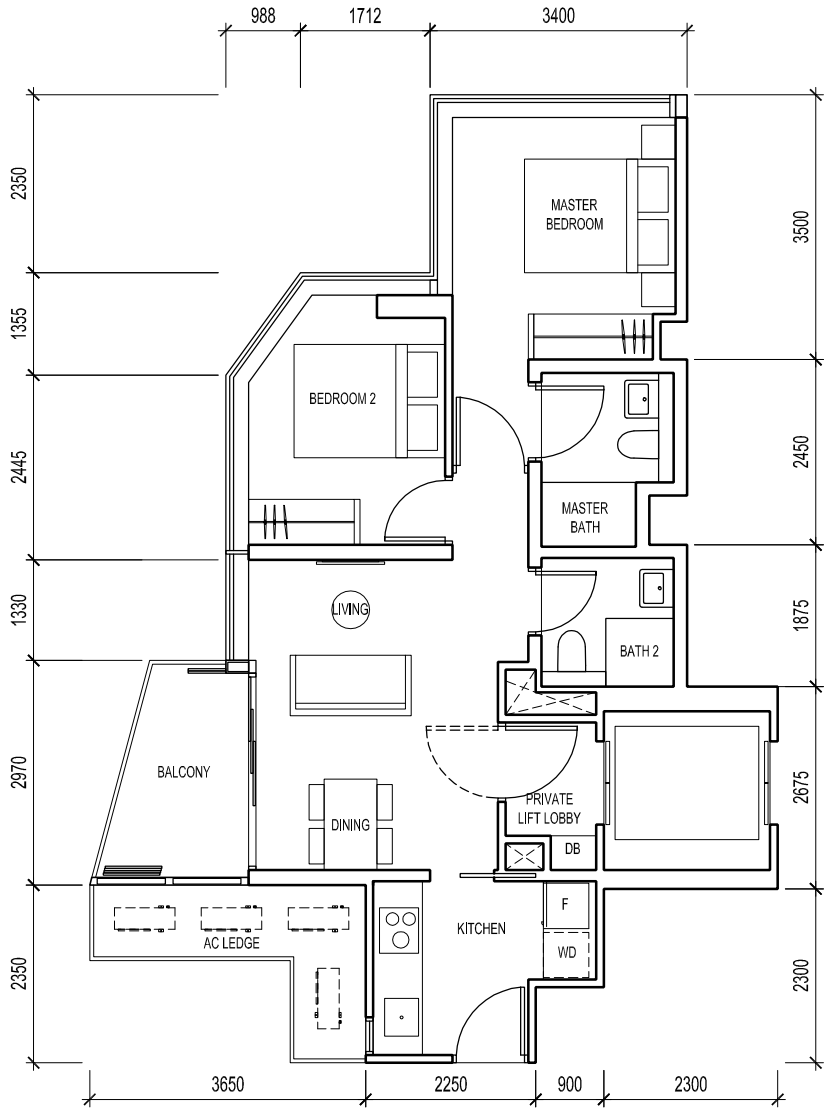
The plans are subject to change as may be required or approved by the relevant authorities.
Areas are estimates only and subject to final survey.
Plans are not drawn to scale and do not form part of the contract.



Type B1

2-Bedroom + Private Lift Lobby
68 sqm / 732 sqft

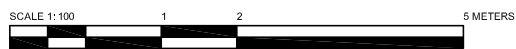
#03-03 to #17-03



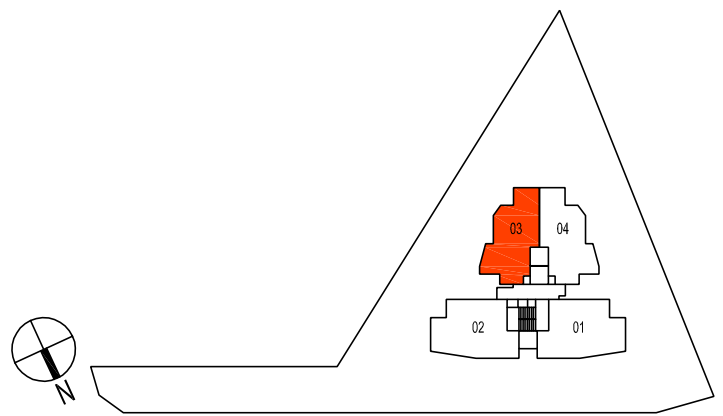
Please note that this floor plan is subject to changes that may be necessary or approved by the relevant authorities. As such, the Developer will not be liable for any claims, losses, expenses of whatever nature that may be suffered by the purchasers' reliance on the said plan.

The Developer does not warrant the accuracy of any of the measurements shown on the floor plan and the Purchaser is advised to take on-site measurement(s) at his unit before committing to any renovation work(s) or installation or purchase of any furniture and furnishing whatsoever.

Note : *Area are subject to final survey by strata surveyor



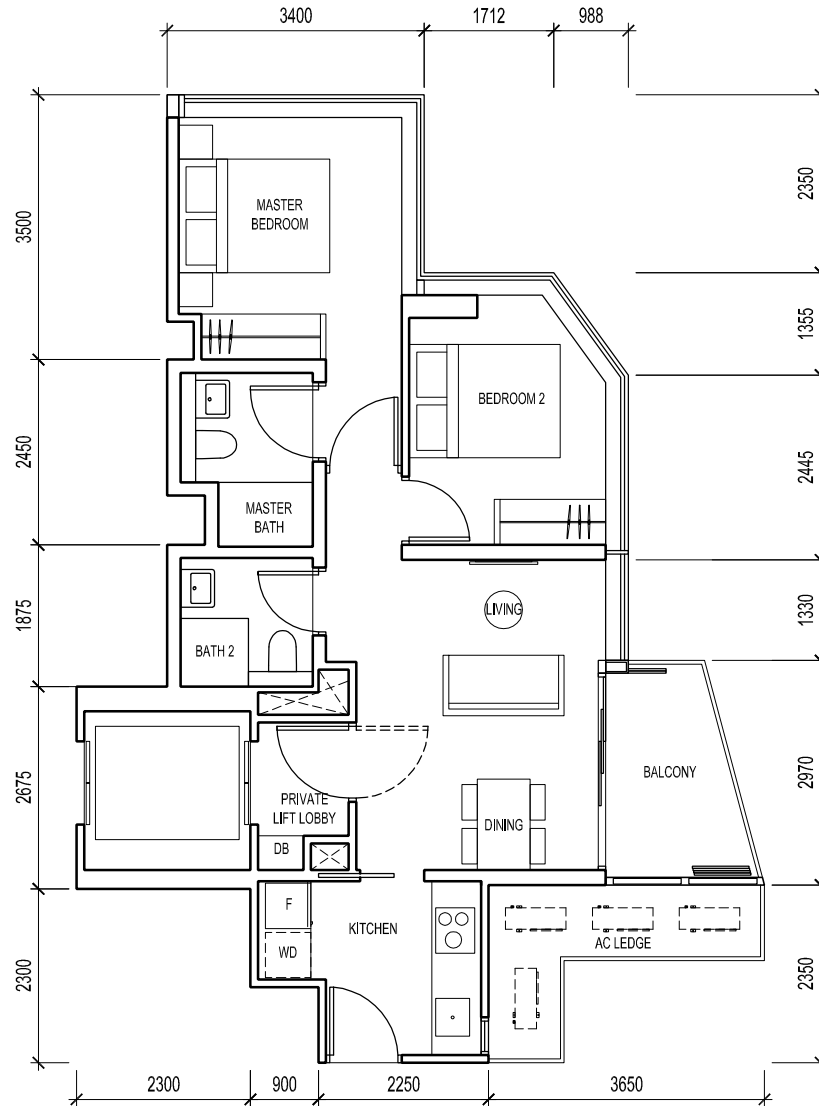
The plans are subject to change as may be required or approved by the relevant authorities.
Areas are estimates only and subject to final survey.
Plans are not drawn to scale and do not form part of the contract.



Type B2

2-Bedroom + Private Lift Lobby
68 sqm / 732 sqft

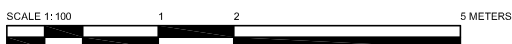
#03-04 to #17-04



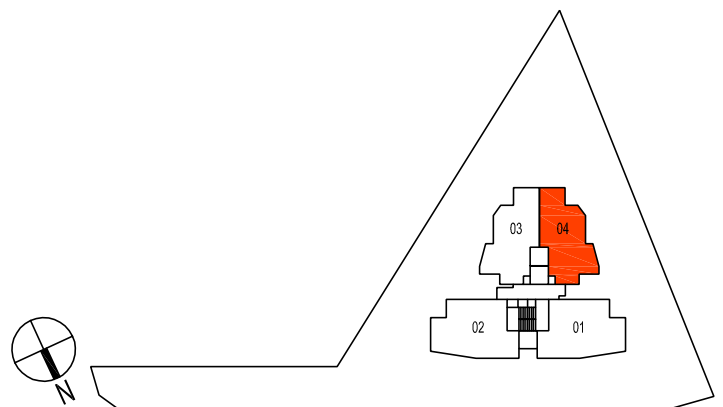
Please note that this floor plan is subject to changes that may be necessary or approved by the relevant authorities. As such, the Developer will not be liable for any claims, losses, expenses of whatever nature that may be suffered by the purchasers' reliance on the said plan.

The Developer does not warrant the accuracy of any of the measurements shown on the floor plan and the Purchaser is advised to take on-site measurement(s) at his unit before committing to any renovation work(s) or installation or purchase of any furniture and furnishing whatsoever.

Note : *Area are subject to final survey by strata surveyor



The plans are subject to change as may be required or approved by the relevant authorities.
Areas are estimates only and subject to final survey.
Plans are not drawn to scale and do not form part of the contract.



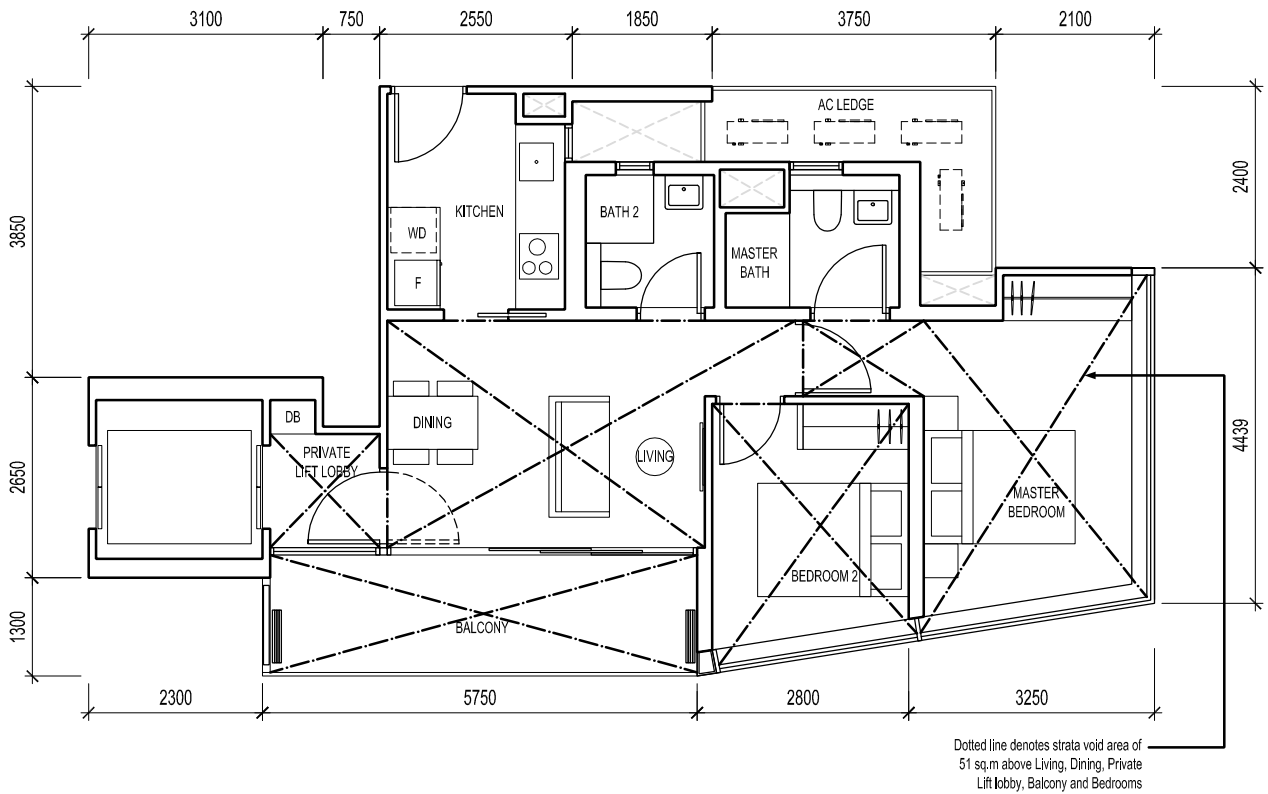
Type A1-PH

2-Bedroom + Private Lift Lobby

125 sqm / 1345 sqft

(Includes 3 sqm Private Lift Lobby, 6 sqm A/C Ledge, 9 sqm Balcony, 51 sqm Void)

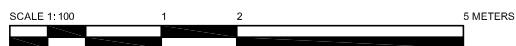
#18-01



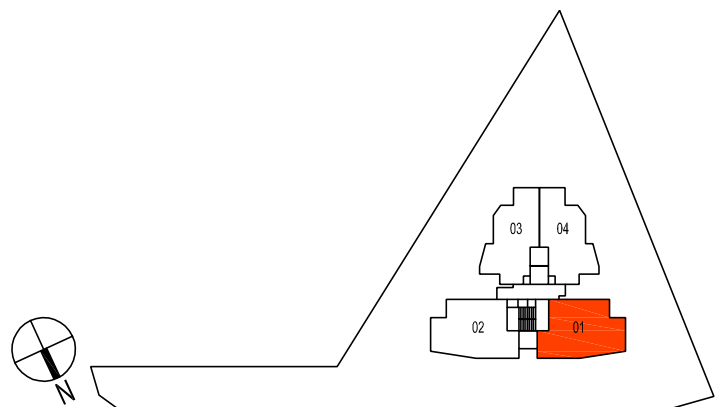
Please note that this floor plan is subject to changes that may be necessary or approved by the relevant authorities. As such, the Developer will not be liable for any claims, losses, expenses of whatever nature that may be suffered by the purchasers' reliance on the said plan.

The Developer does not warrant the accuracy of any of the measurements shown on the floor plan and the Purchaser is advised to take on-site measurement(s) at his unit before committing to any renovation work(s) or installation or purchase of any furniture and furnishing whatsoever.

Note : *Area are subject to final survey by strata surveyor



The plans are subject to change as may be required or approved by the relevant authorities.
Areas are estimates only and subject to final survey.
Plans are not drawn to scale and do not form part of the contract.



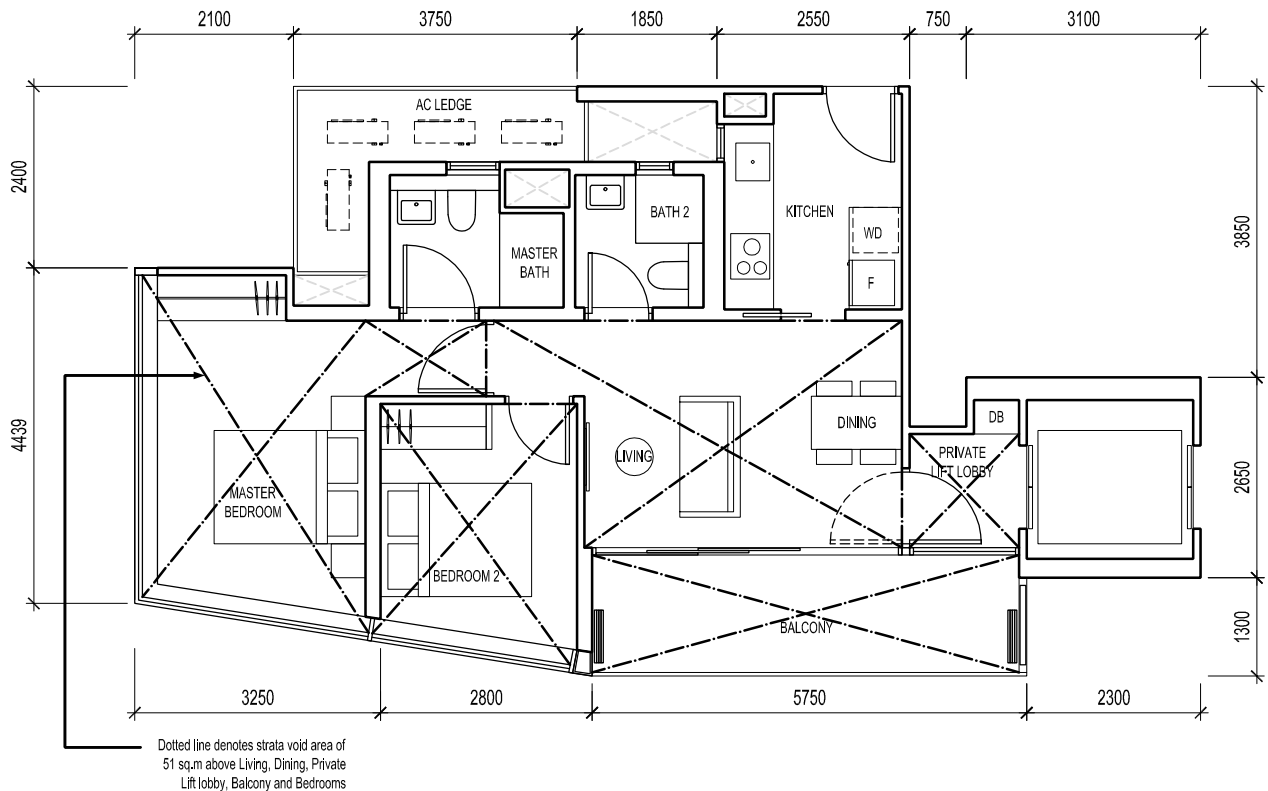
Type A2-PH

2-Bedroom + Private Lift Lobby

125 sqm / 1345 sqft

(Includes 3 sqm Private Lift Lobby, 6 sqm A/C Ledge, 9 sqm Balcony, 51 sqm Void)

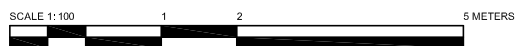
#18-02



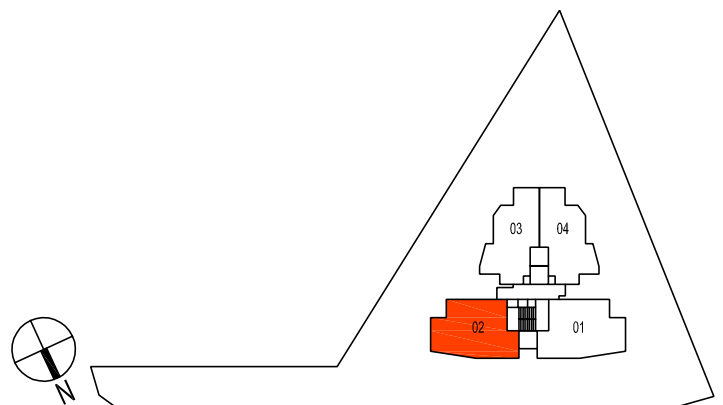
Please note that this floor plan is subject to changes that may be necessary or approved by the relevant authorities. As such, the Developer will not be liable for any claims, losses, expenses of whatever nature that may be suffered by the purchasers' reliance on the said plan.

The Developer does not warrant the accuracy of any of the measurements shown on the floor plan and the Purchaser is advised to take on-site measurement(s) at his unit before committing to any renovation work(s) or installation or purchase of any furniture and furnishing whatsoever.

Note : *Area are subject to final survey by strata surveyor



The plans are subject to change as may be required or approved by the relevant authorities.
 Areas are estimates only and subject to final survey.
 Plans are not drawn to scale and do not form part of the contract.



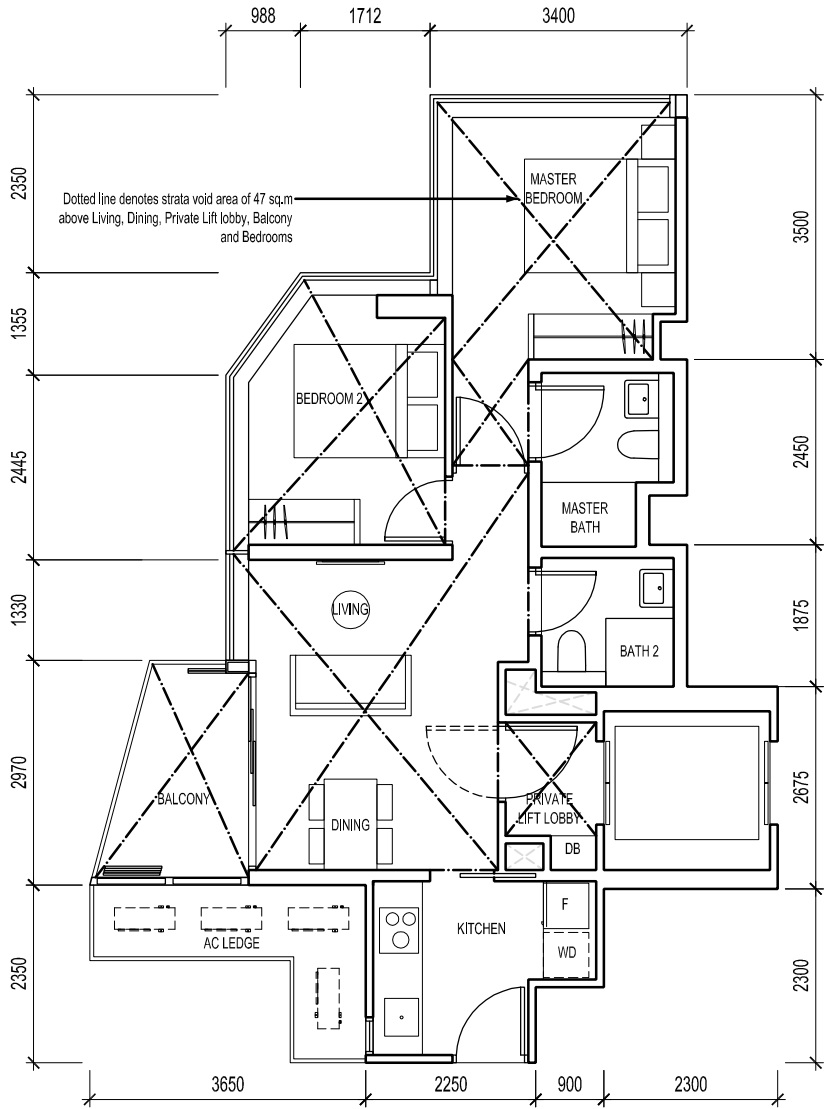
Type B1-PH

2-Bedroom + Private Lift Lobby

115 sqm / 1238 sqft

(Includes 3 sqm Private Lift Lobby, 5 sqm A/C Ledge, 5 sqm Balcony, 47 sqm Void)

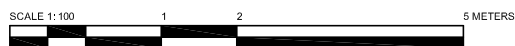
#18-03



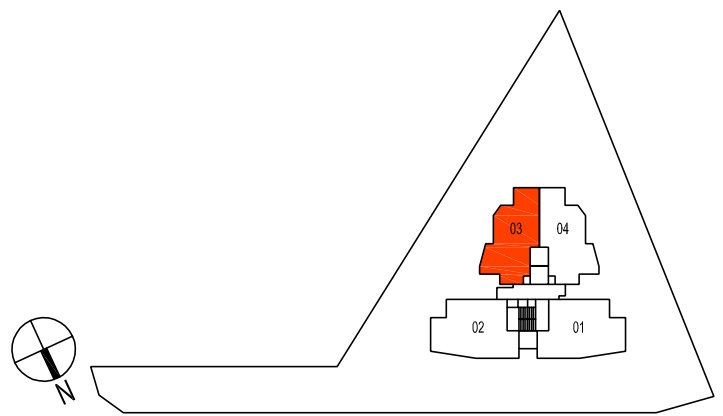
Please note that this floor plan is subject to changes that may be necessary or approved by the relevant authorities. As such, the Developer will not be liable for any claims, losses, expenses of whatever nature that may be suffered by the purchasers' reliance on the said plan.

The Developer does not warrant the accuracy of any of the measurements shown on the floor plan and the Purchaser is advised to take on-site measurement(s) at his unit before committing to any renovation work(s) or installation or purchase of any furniture and furnishing whatsoever.

Note : *Area are subject to final survey by strata surveyor



The plans are subject to change as may be required or approved by the relevant authorities.
Areas are estimates only and subject to final survey.
Plans are not drawn to scale and do not form part of the contract.



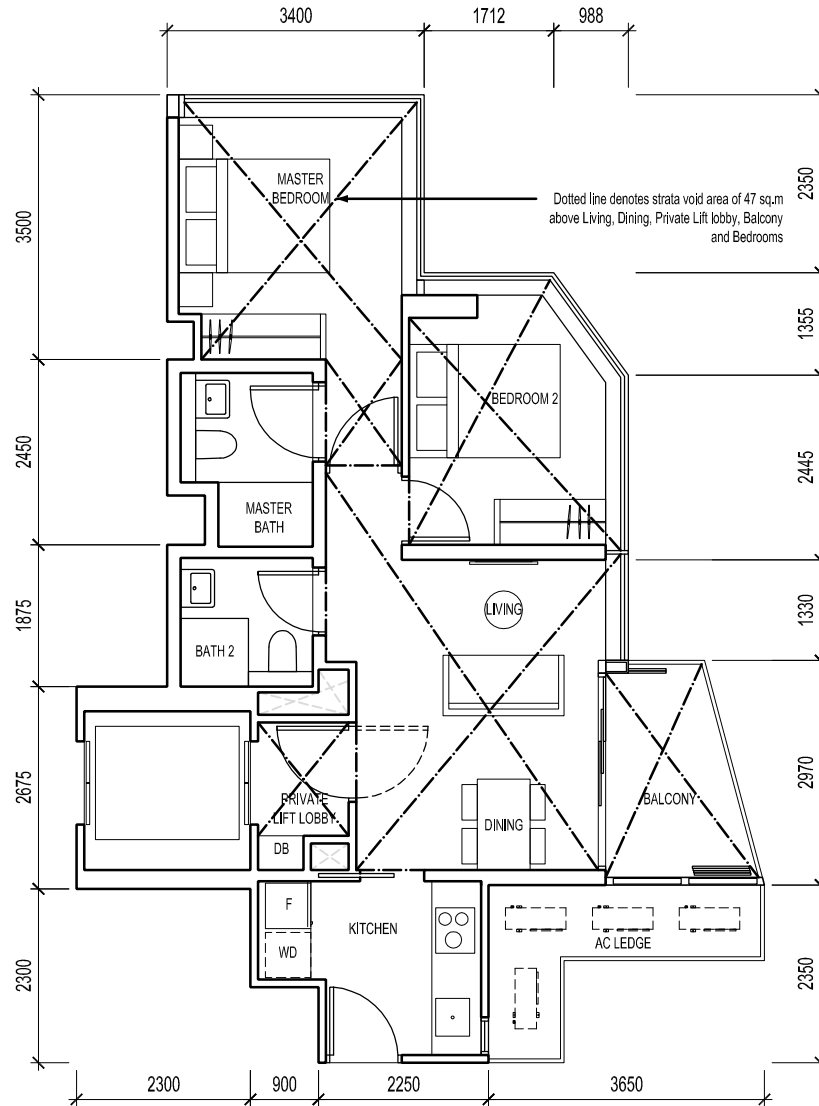
Type B2-PH

2-Bedroom + Private Lift Lobby

115 sqm / 1238 sqft

(Includes 3 sqm Private Lift Lobby, 5 sqm A/C Ledge, 5 sqm Balcony, 47 sqm Void)

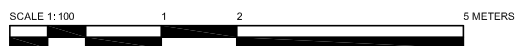
#18-04



Please note that this floor plan is subject to changes that may be necessary or approved by the relevant authorities. As such, the Developer will not be liable for any claims, losses, expenses of whatever nature that may be suffered by the purchasers' reliance on the said plan.

The Developer does not warrant the accuracy of any of the measurements shown on the floor plan and the Purchaser is advised to take on-site measurement(s) at his unit before committing to any renovation work(s) or installation or purchase of any furniture and furnishing whatsoever.

Note : *Area are subject to final survey by strata surveyor



The plans are subject to change as may be required or approved by the relevant authorities.
Areas are estimates only and subject to final survey.
Plans are not drawn to scale and do not form part of the contract.

