

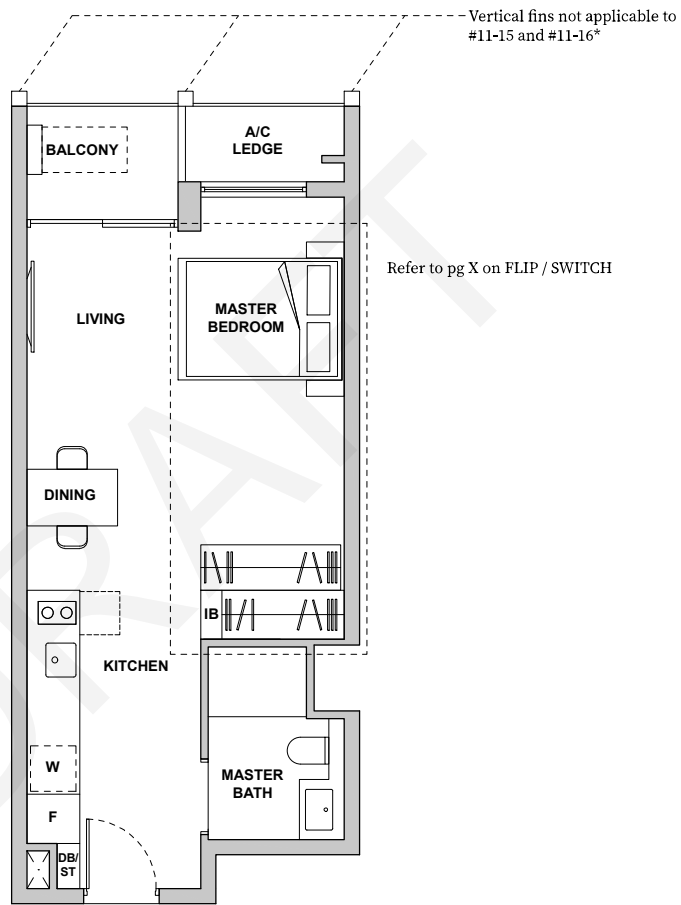
# FLIP / SWITCH

R10 05/07/2023

## Type A1

Area: 44 sqm ( include 2 sqm A/C Ledge, 4 sqm Balcony )

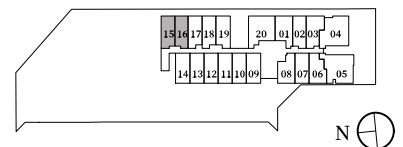
Unit(s): #04-15 to #11-15  
#14-15 to #18-15  
#04-16 \* to #11-16 \*  
#14-16 \* to #18-16 \*



LEGEND:  
IB: IRONING BOARD

NOTE:  
\*Mirror Image

Plans are subject to change/amendments as may be required and/or approved by the Developer and/or the relevant authorities and do not form part of any offer or contract. These are not drawn to scale and are for the purpose of visual presentation only. The balcony shall not be enclosed unless with the approved balcony screen. For an illustration of the approved balcony screen, please refer to APPROVED BALCONY SCREEN DESIGN page of this brochure.



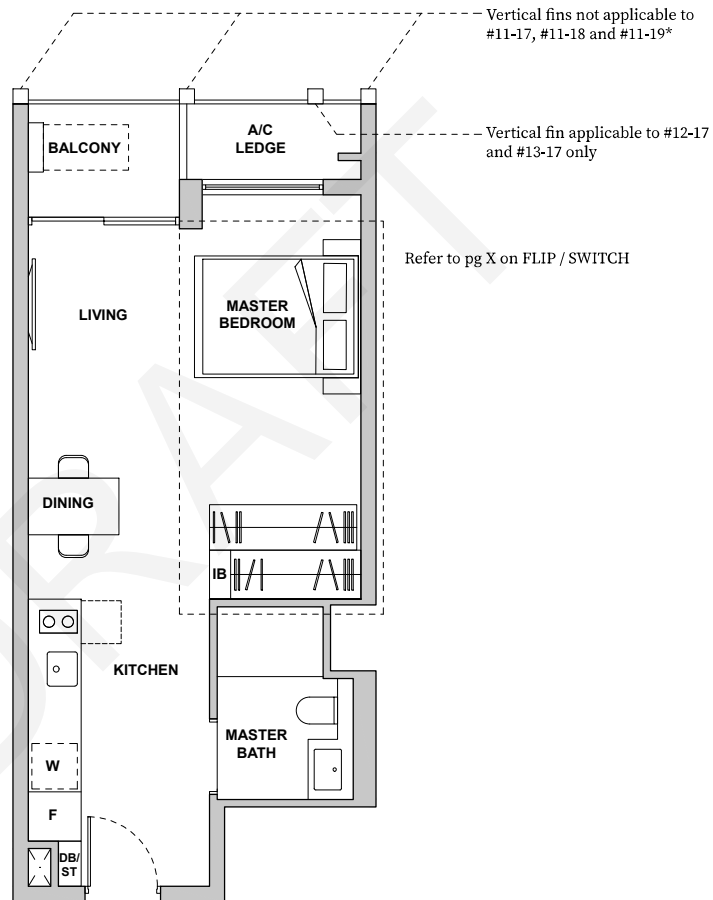
# FLIP / SWITCH

R10 05/07/2023

## Type A2

Area: 45 sqm ( include 3 sqm A/C Ledge, 4 sqm Balcony )

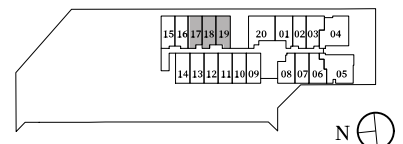
Unit(s): #04-17 to #18-17  
#04-18 to #18-18  
#04-19 \* to #18-19 \*



LEGEND:  
IB: IRONING BOARD

NOTE:  
\*Mirror Image

Plans are subject to change/amendments as may be required and/or approved by the Developer and/or the relevant authorities and do not form part of any offer or contract. These are not drawn to scale and are for the purpose of visual presentation only. The balcony shall not be enclosed unless with the approved balcony screen. For an illustration of the approved balcony screen, please refer to APPROVED BALCONY SCREEN DESIGN page of this brochure.



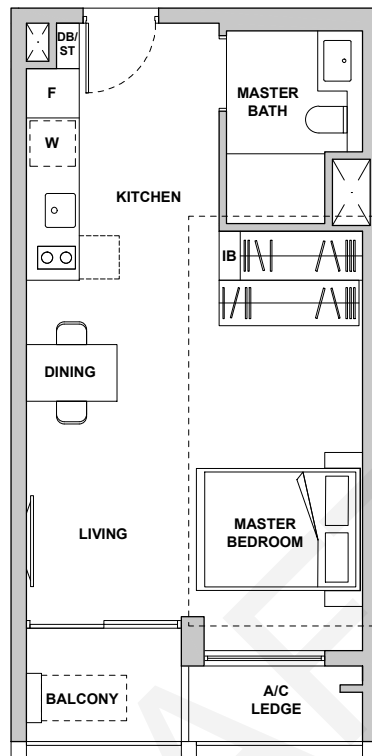
# FLIP / SWITCH

R10 05/07/2023

## Type A3

Area: 44 sqm ( include 3 sqm A/C Ledge, 4 sqm Balcony )

Unit(s): #05-07 to #20-07  
 #05-09 to #19-09  
 #05-10 to #19-10  
 #05-11 to #19-11  
 #05-12 to #19-12  
 #05-13 to #19-13  
 #05-14 to #19-14



Refer to pg X on FLIP / SWITCH

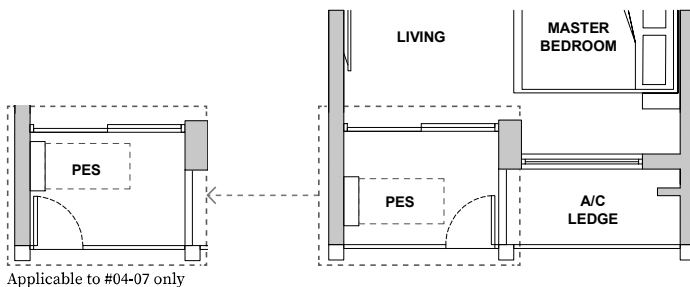
LEGEND:  
 IB: IRONING BOARD

Vertical fins not applicable to  
 #12-07  
 #07-09, #10-09  
 #07-10, #10-10  
 #07-11, #10-11  
 #07-12, #10-12  
 #07-13, #10-13  
 #07-14, #10-14

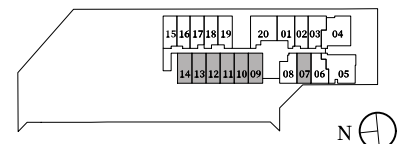
## Type A3-G

Area: 44 sqm ( include 3 sqm A/C Ledge, 4 sqm PES )

Unit(s): #04-07  
 #04-09  
 #04-10  
 #04-11  
 #04-12  
 #04-13  
 #04-14



Plans are subject to change/amendments as may be required and/or approved by the Developer and/or the relevant authorities and do not form part of any offer or contract. These are not drawn to scale and are for the purpose of visual presentation only. The balcony shall not be enclosed unless with the approved balcony screen. For an illustration of the approved balcony screen, please refer to APPROVED BALCONY SCREEN DESIGN page of this brochure.



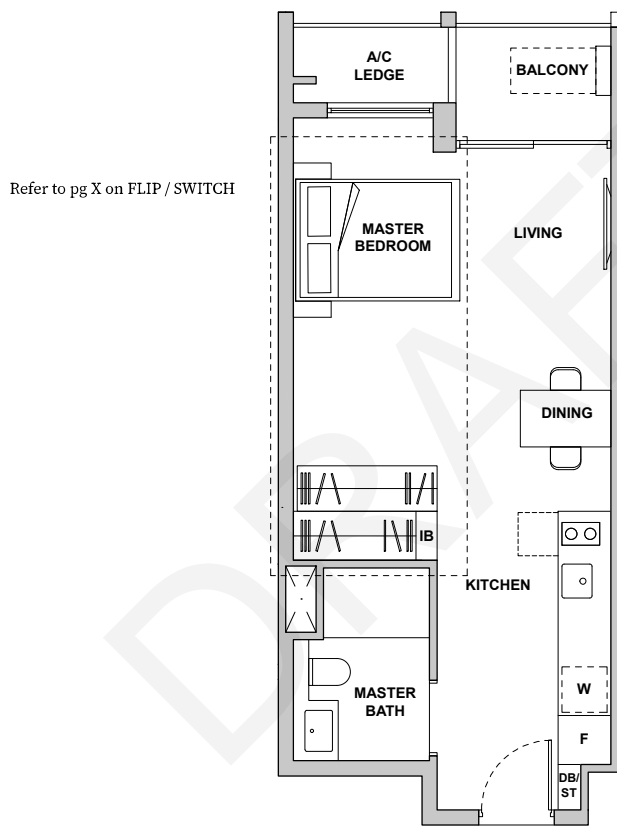
# FLIP / SWITCH

R10 05/07/2023

Type A4

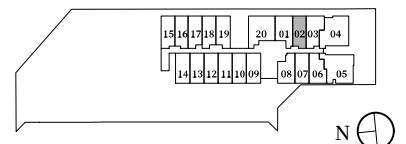
Area: 45 sqm ( include 3 sqm A/C Ledge, 4 sqm Balcony )

Unit(s): #04-02 to #20-02



LEGEND:  
IB: IRONING BOARD

Plans are subject to change/amendments as may be required and/or approved by the Developer and/or the relevant authorities and do not form part of any offer or contract. These are not drawn to scale and are for the purpose of visual presentation only. The balcony shall not be enclosed unless with the approved balcony screen. For an illustration of the approved balcony screen, please refer to APPROVED BALCONY SCREEN DESIGN page of this brochure.



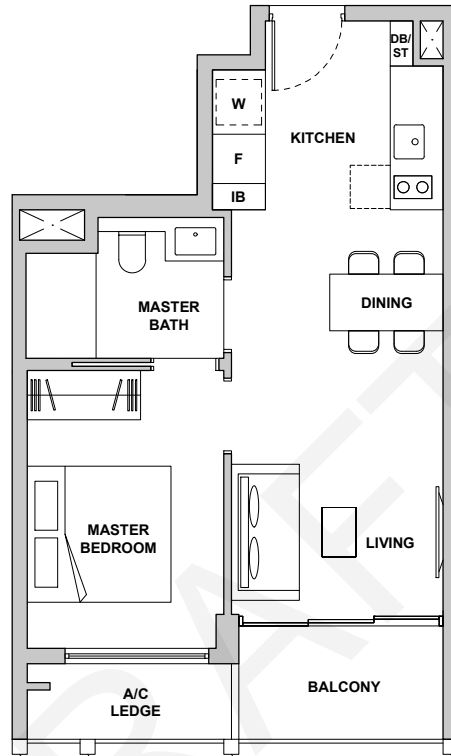
# 1 - BEDROOM SUITE

R10 05/07/2023

## Type 1B1

Area: 48 sqm ( include 3 sqm A/C Ledge, 5 sqm Balcony )

Unit(s): #05-08 to #20-08



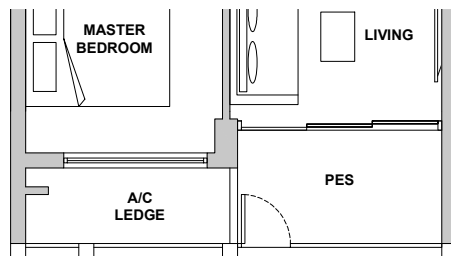
LEGEND:  
IB: IRONING BOARD

Vertical fins not applicable to #12-08

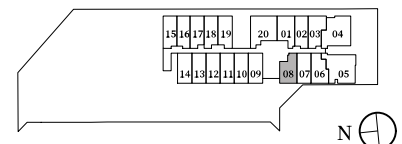
## Type 1B1-G

Area: 48 sqm ( include 3 sqm A/C Ledge, 5 sqm PES )

Unit(s): #04-08



Plans are subject to change/amendments as may be required and/or approved by the Developer and/or the relevant authorities and do not form part of any offer or contract. These are not drawn to scale and are for the purpose of visual presentation only. The balcony shall not be enclosed unless with the approved balcony screen. For an illustration of the approved balcony screen, please refer to APPROVED BALCONY SCREEN DESIGN page of this brochure.



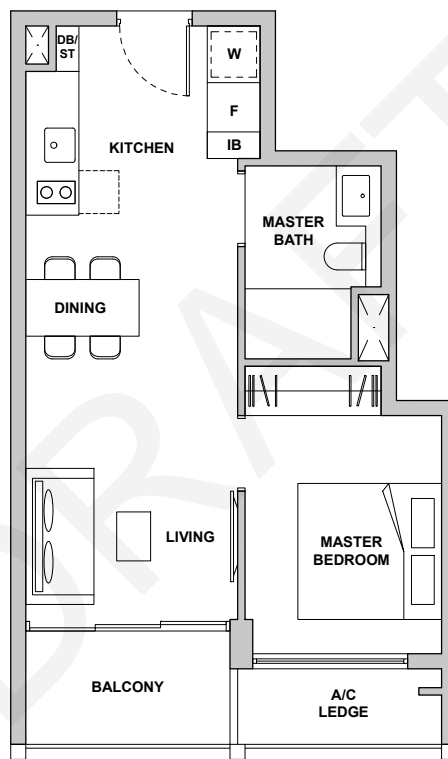
# 1 - BEDROOM SUITE

R10 05/07/2023

Type 1B2

Area: 48 sqm ( include 3 sqm A/C Ledge, 5 sqm Balcony )

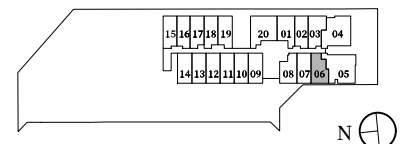
Unit(s): #04-06 to #20-06



Vertical fins not applicable to #12-06

LEGEND:  
IB: IRONING BOARD

Plans are subject to change/amendments as may be required and/or approved by the Developer and/or the relevant authorities and do not form part of any offer or contract. These are not drawn to scale and are for the purpose of visual presentation only. The balcony shall not be enclosed unless with the approved balcony screen. For an illustration of the approved balcony screen, please refer to APPROVED BALCONY SCREEN DESIGN page of this brochure.



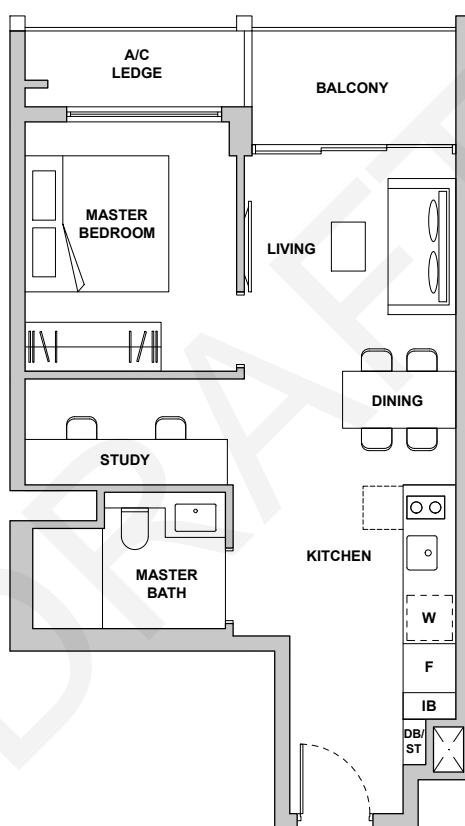
# 1 - BEDROOM + STUDY

R10 05/07/2023

Type 1S1

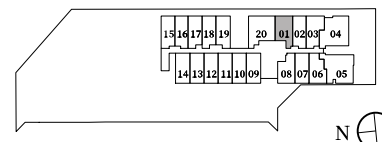
Area: 53 sqm ( include 4 sqm A/C Ledge, 5 sqm Balcony )

Unit(s): #04-01 to #20-01



LEGEND:  
IB: IRONING BOARD

Plans are subject to change/amendments as may be required and/or approved by the Developer and/or the relevant authorities and do not form part of any offer or contract. These are not drawn to scale and are for the purpose of visual presentation only. The balcony shall not be enclosed unless with the approved balcony screen. For an illustration of the approved balcony screen, please refer to APPROVED BALCONY SCREEN DESIGN page of this brochure.



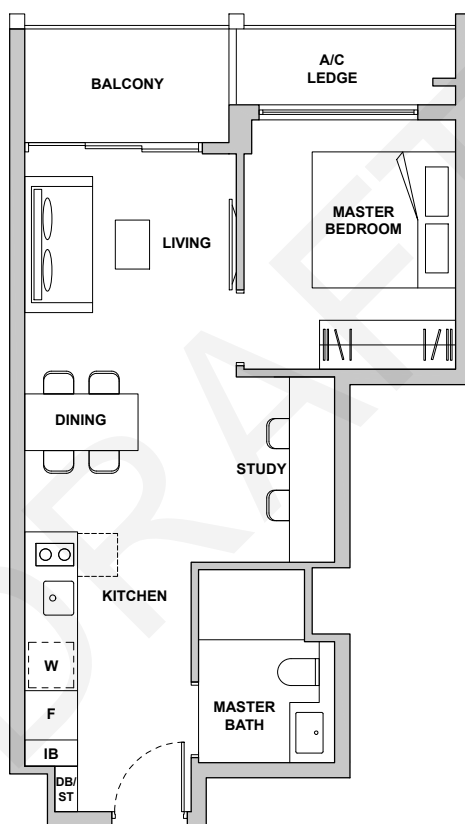
# 1 - BEDROOM + STUDY

R10 05/07/2023

Type 1S2

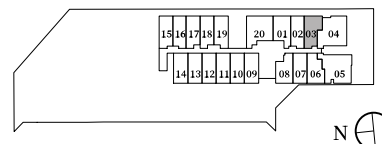
Area: 51 sqm ( include 4 sqm A/C Ledge, 5 sqm Balcony )

Unit(s): #04-03 to #20-03



LEGEND:  
IB: IRONING BOARD

Plans are subject to change/amendments as may be required and/or approved by the Developer and/or the relevant authorities and do not form part of any offer or contract. These are not drawn to scale and are for the purpose of visual presentation only. The balcony shall not be enclosed unless with the approved balcony screen. For an illustration of the approved balcony screen, please refer to APPROVED BALCONY SCREEN DESIGN page of this brochure.





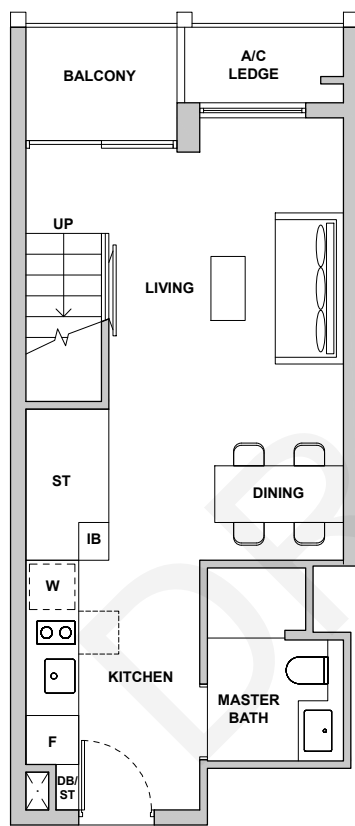
# 1-BEDROOM LOFT

R10 05/07/2023

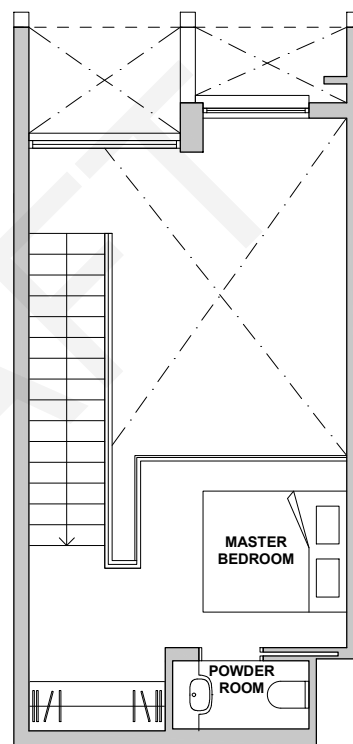
Type BL1

Area: 79 sqm ( include 2 sqm A/C Ledge, 4 sqm Balcony, 21 sqm Void )

Unit(s): #19-15  
#19-16 \*



LOWER LOFT

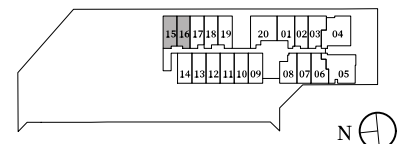


UPPER LOFT

LEGEND:  
IB: IRONING BOARD

NOTE:  
\*Mirror Image

Plans are subject to change/amendments as may be required and/or approved by the Developer and/or the relevant authorities and do not form part of any offer or contract. These are not drawn to scale and are for the purpose of visual presentation only. The balcony shall not be enclosed unless with the approved balcony screen. For an illustration of the approved balcony screen, please refer to APPROVED BALCONY SCREEN DESIGN page of this brochure.



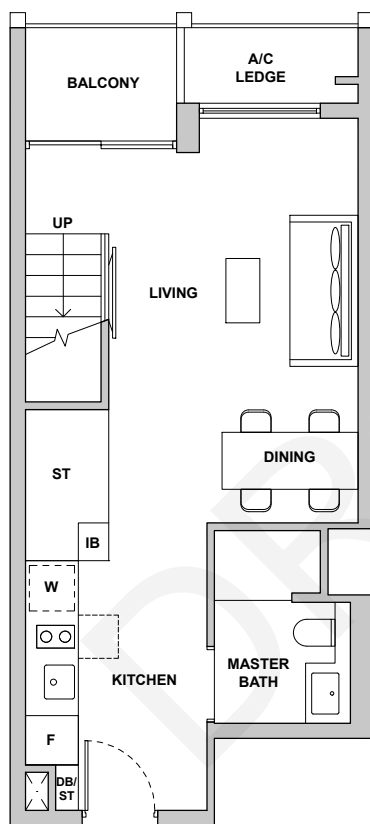
# 1-BEDROOM LOFT

R10 05/07/2023

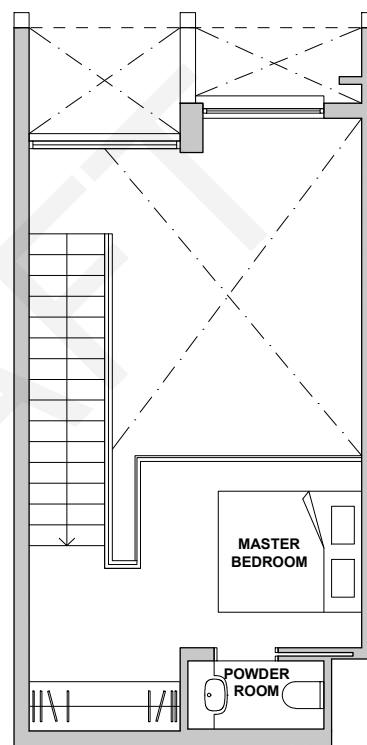
Type BL2

Area: 82 sqm ( include 3 sqm A/C Ledge, 4 sqm Balcony, 22 sqm Void )

Unit(s): #19-17  
 #19-18  
 #19-19 \*



LOWER LOFT

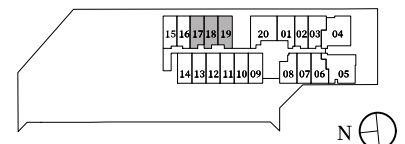


UPPER LOFT

LEGEND:  
 IB: IRONING BOARD

NOTE:  
 \*Mirror Image

Plans are subject to change/amendments as may be required and/or approved by the Developer and/or the relevant authorities and do not form part of any offer or contract. These are not drawn to scale and are for the purpose of visual presentation only. The balcony shall not be enclosed unless with the approved balcony screen. For an illustration of the approved balcony screen, please refer to APPROVED BALCONY SCREEN DESIGN page of this brochure.



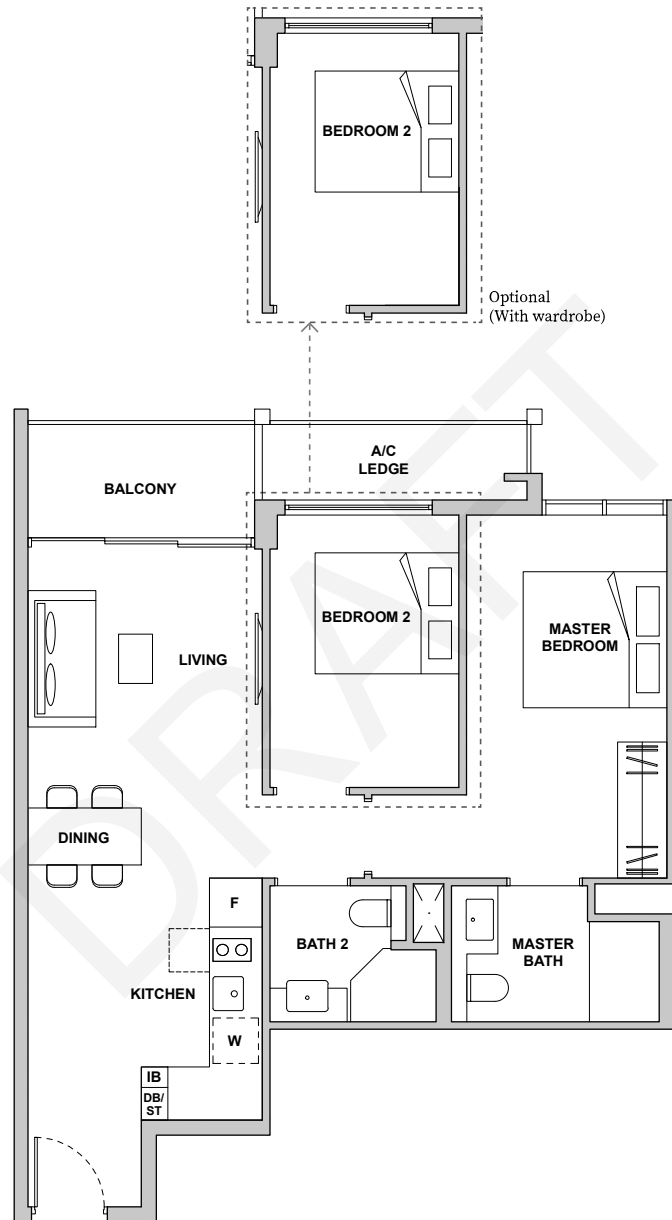
# 2 - BEDROOM PREMIUM

R10 05/07/2023

Type 2C1

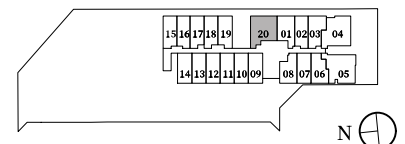
Area: 73 sqm ( include 4 sqm A/C Ledge, 5 sqm Balcony )

Unit(s): #04-20 to #19-20



LEGEND:  
IB: IRONING BOARD

Plans are subject to change/amendments as may be required and/or approved by the Developer and/or the relevant authorities and do not form part of any offer or contract. These are not drawn to scale and are for the purpose of visual presentation only. The balcony shall not be enclosed unless with the approved balcony screen. For an illustration of the approved balcony screen, please refer to APPROVED BALCONY SCREEN DESIGN page of this brochure.



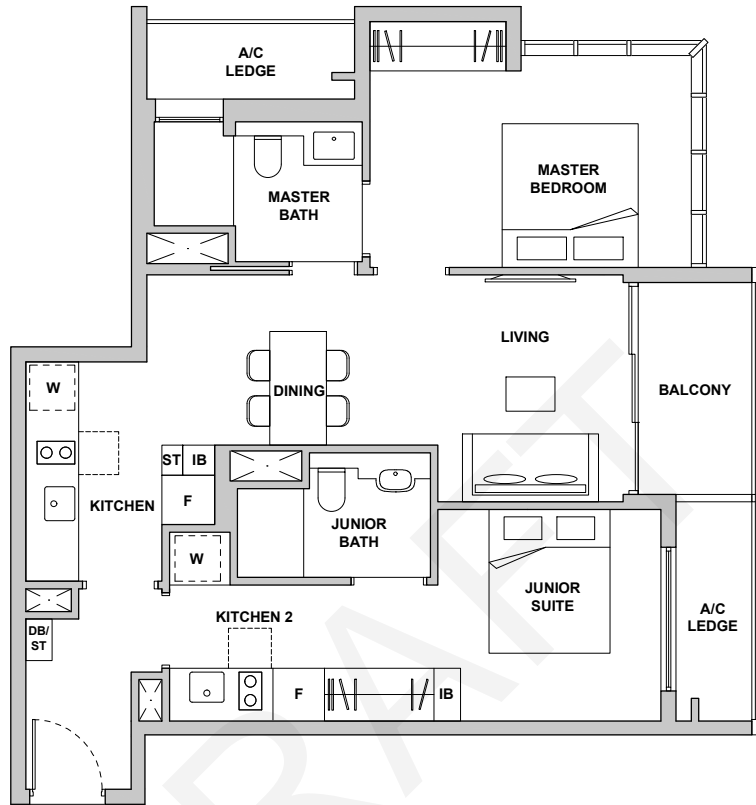
# 2 - BEDROOM DUAL-KEY

R10 05/07/2023

## Type 2DK1

Area: 81 sqm ( include 7 sqm A/C Ledge, 5 sqm Balcony )

Unit(s): #05-04 to #20-04

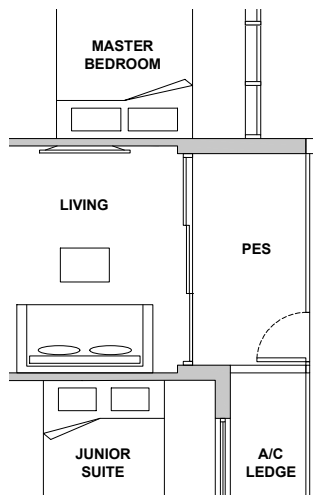


LEGEND:  
IB: IRONING BOARD

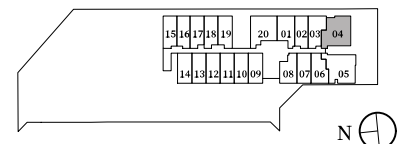
## Type 2DK1-G

Area: 81 sqm ( include 7 sqm A/C Ledge, 5 sqm PES )

Unit(s): #04-04



Plans are subject to change/amendments as may be required and/or approved by the Developer and/or the relevant authorities and do not form part of any offer or contract. These are not drawn to scale and are for the purpose of visual presentation only. The balcony shall not be enclosed unless with the approved balcony screen. For an illustration of the approved balcony screen, please refer to APPROVED BALCONY SCREEN DESIGN page of this brochure.



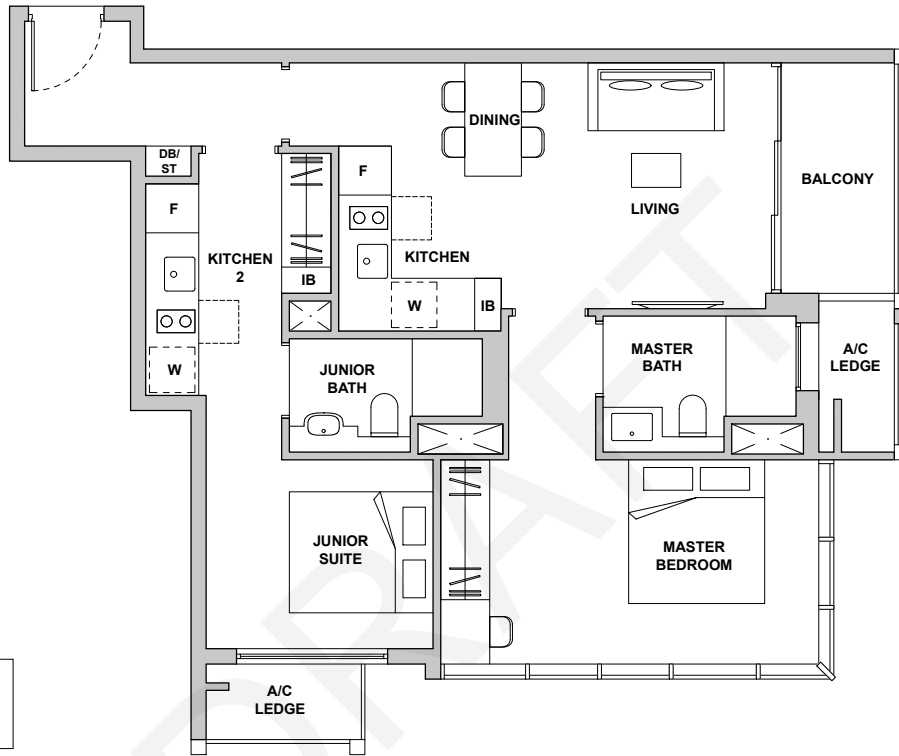
# 2 - BEDROOM DUAL-KEY

R10 05/07/2023

## Type 2DK2

Area: 80 sqm ( include 5 sqm A/C Ledge, 5 sqm Balcony )

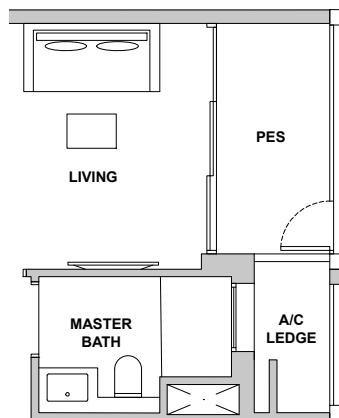
Unit(s): #05-05 to #20-05



## Type 2DK2-G

Area: 80 sqm ( include 5 sqm A/C Ledge, 5 sqm PES )

Unit(s): #04-05



Plans are subject to change/amendments as may be required and/or approved by the Developer and/or the relevant authorities and do not form part of any offer or contract. These are not drawn to scale and are for the purpose of visual presentation only. The balcony shall not be enclosed unless with the approved balcony screen. For an illustration of the approved balcony screen, please refer to APPROVED BALCONY SCREEN DESIGN page of this brochure.

