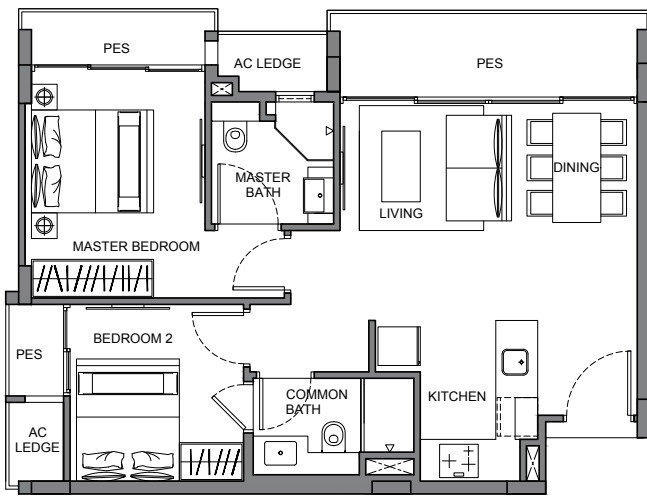


# 2-Bedroom

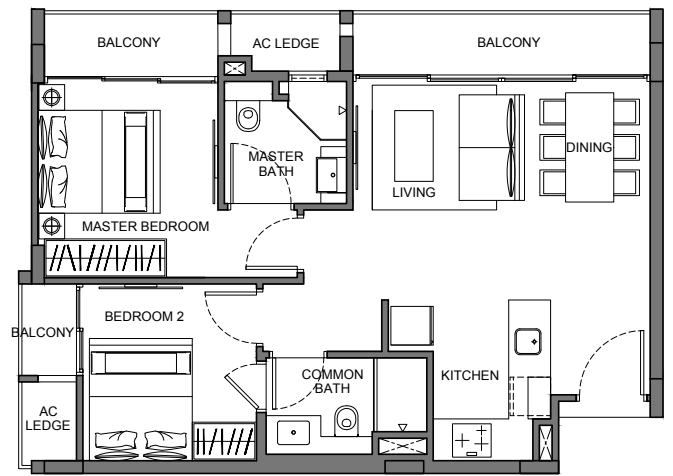


## TYPE A1

2-Bedroom

70 sq m / 753 sq ft

#01-06

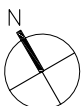
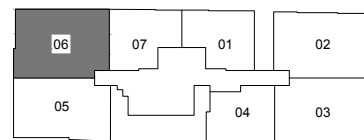


## TYPE A2

2-Bedroom

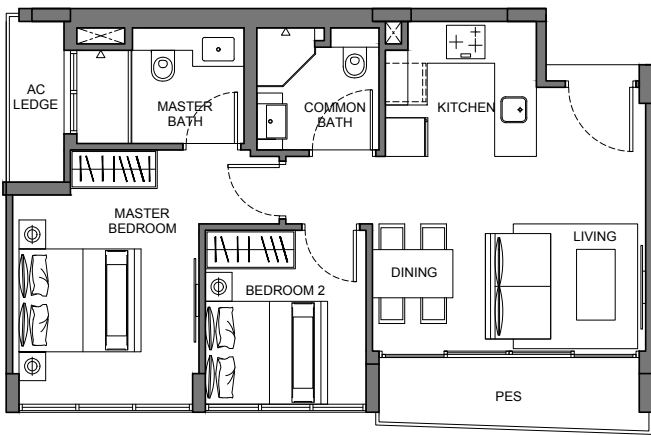
67 sq m / 721 sq ft

#02-06, #03-06 & #04-06



Floor areas are inclusive of PES, balconies, A/C ledges and voids. Floor area are approximate and subject to final survey. The plans are subject to changes as required or approved by relevant authorities. The balconies shall not be enclosed unless with approved balcony screens.

# 2-Bedroom

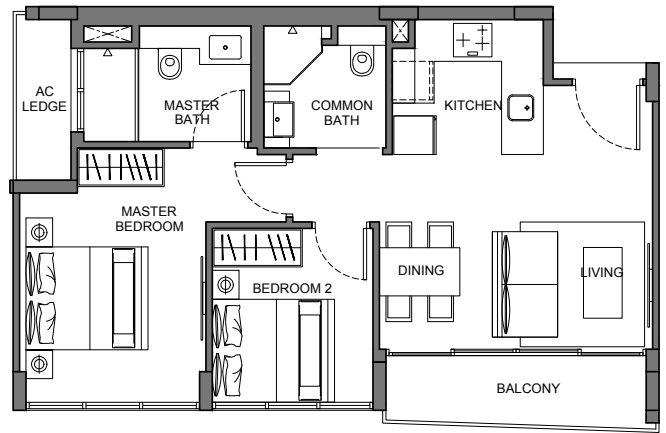


## TYPE B1

2-Bedroom

61 sq m / 657 sq ft

#01-05

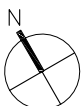
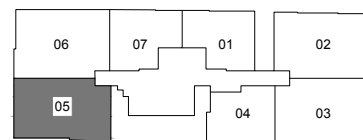


## TYPE B2

2-Bedroom

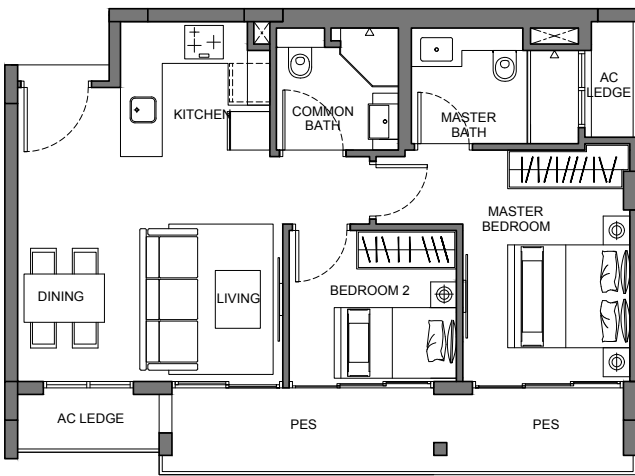
61 sq m / 657 sq ft

#02-05, #03-05 & #04-05



Floor areas are inclusive of PES, balconies, A/C ledges and voids. Floor area are approximate and subject to final survey. The plans are subject to changes as required or approved by relevant authorities. The balconies shall not be enclosed unless with approved balcony screens.

# 2-Bedroom

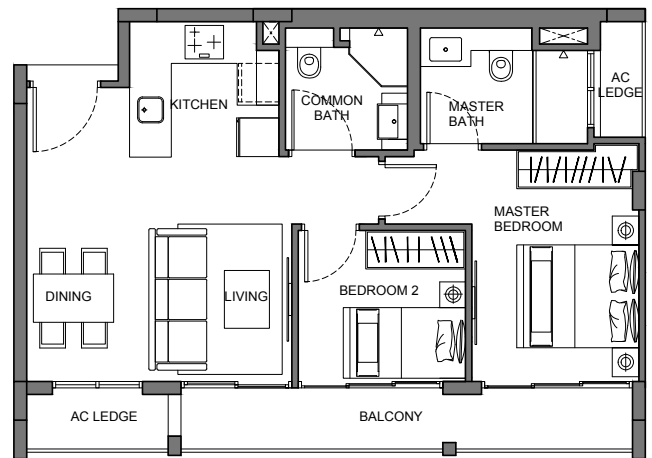


## TYPE B3

2-Bedroom

67 sq m / 721 sq ft

#01-03

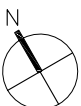
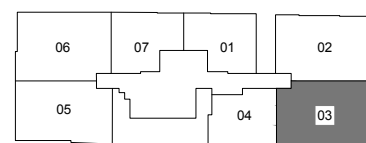


## TYPE B4

2-Bedroom

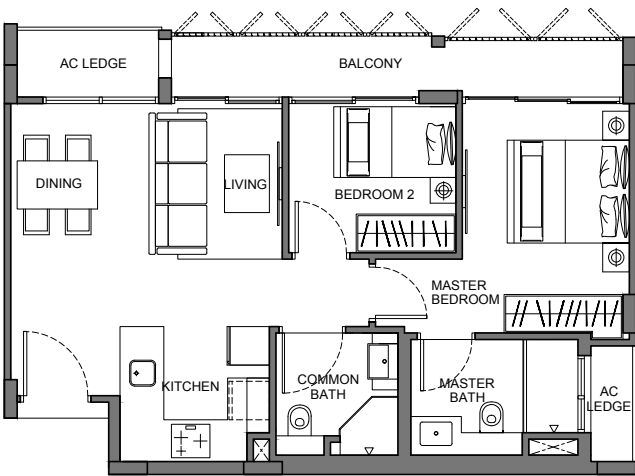
64 sq m / 689 sq ft

#02-03

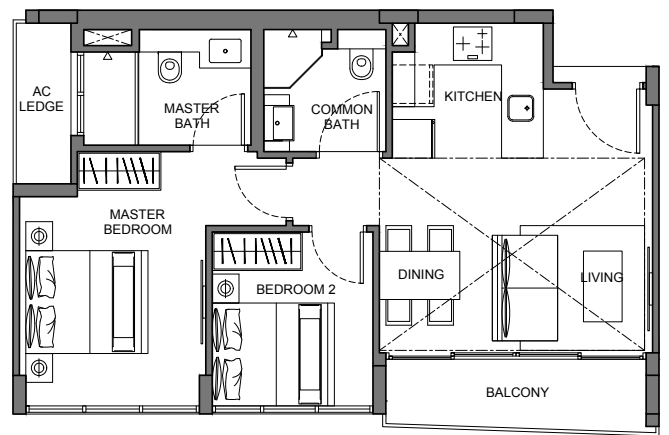


Floor areas are inclusive of PES, balconies, A/C ledges and voids. Floor area are approximate and subject to final survey. The plans are subject to changes as required or approved by relevant authorities. The balconies shall not be enclosed unless with approved balcony screens.

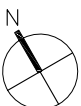
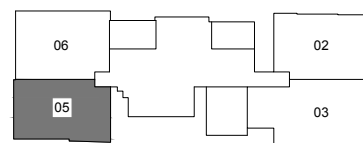
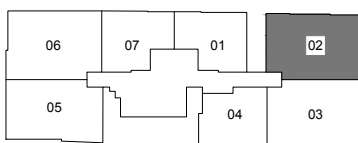
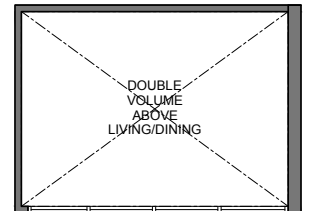
# 2-Bedroom



**TYPE B5**  
2-Bedroom  
64 sq m / 689 sq ft  
#02-02

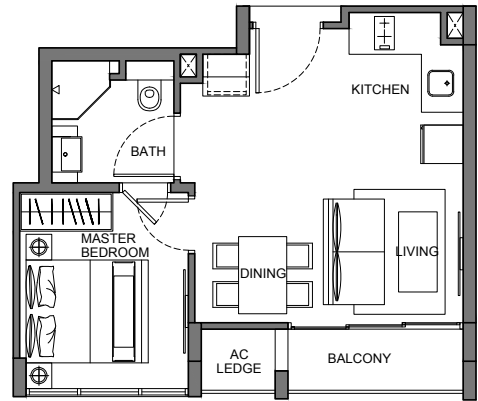


**TYPE B6**  
2-Bedroom  
74 sq m / 797 sq ft  
#05-05



Floor areas are inclusive of PES, balconies, A/C ledges and voids. Floor area are approximate and subject to final survey. The plans are subject to changes as required or approved by relevant authorities. The balconies shall not be enclosed unless with approved balcony screens.

# 1-Bedroom

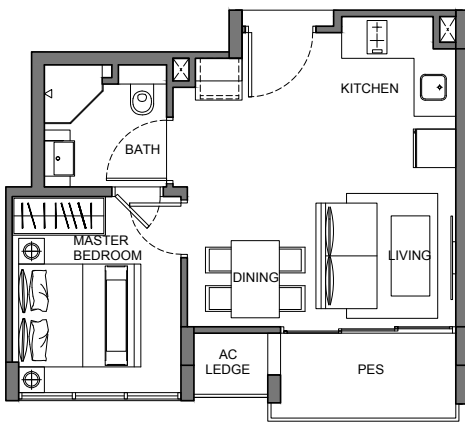


## TYPE C2

1-Bedroom

38 sq m / 409 sq ft

#02-04

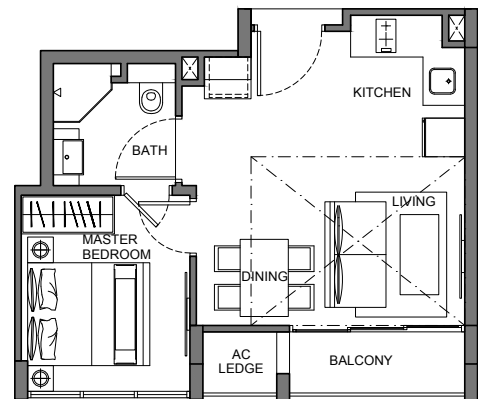


## TYPE C1

1-Bedroom

39 sq m / 420 sq ft

#01-04

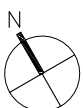
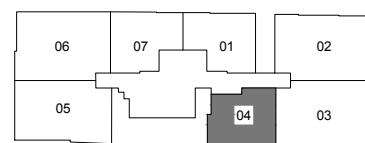
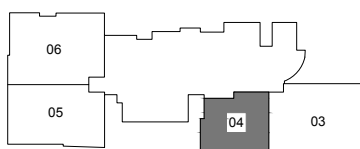
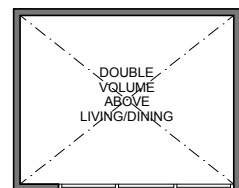


## TYPE C3

1-Bedroom

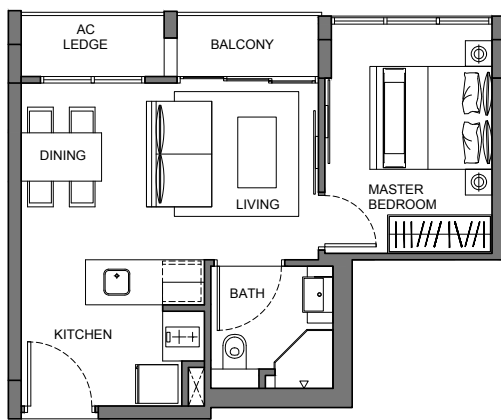
47 sq m / 506 sq ft

#03-04

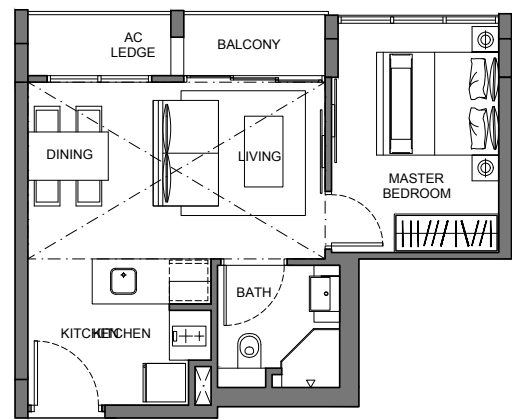


Floor areas are inclusive of PES, balconies, A/C ledges and voids. Floor area are approximate and subject to final survey. The plans are subject to changes as required or approved by relevant authorities. The balconies shall not be enclosed unless with approved balcony screens.

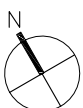
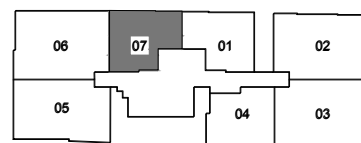
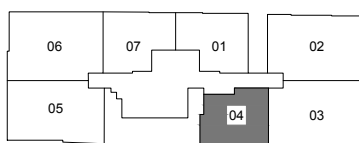
# 1-Bedroom



**TYPE D1**  
1-Bedroom  
40 sq m / 431 sq ft  
#02-07 & #03-07

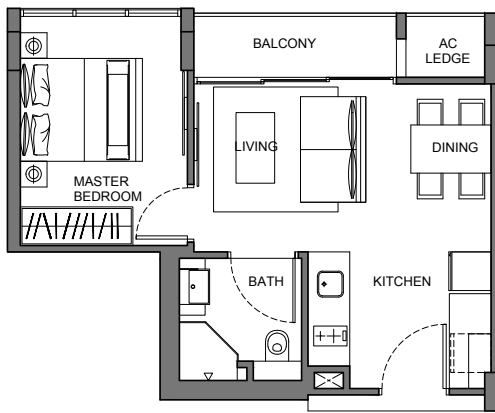


**TYPE D2**  
1-Bedroom  
53 sq m / 570 sq ft  
#04-07

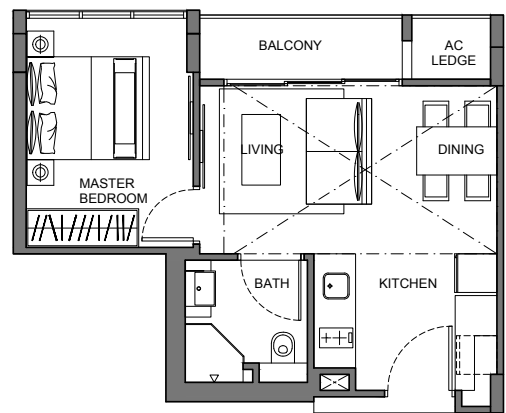


Floor areas are inclusive of PES, balconies, A/C ledges and voids. Floor area are approximate and subject to final survey. The plans are subject to changes as required or approved by relevant authorities. The balconies shall not be enclosed unless with approved balcony screens.

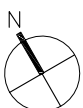
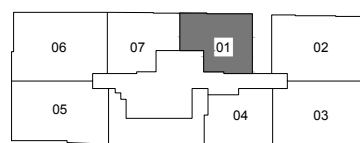
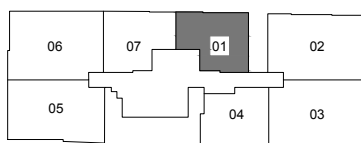
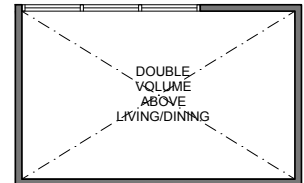
# 1-Bedroom



**TYPE D3**  
1-Bedroom  
39 sq m / 420 sq ft  
#02-01 & #03-01

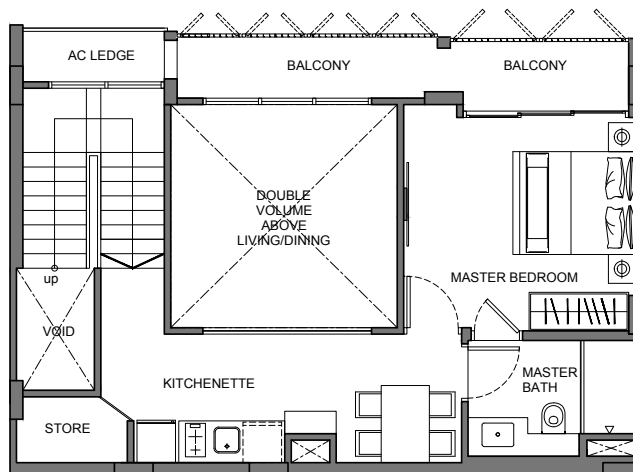
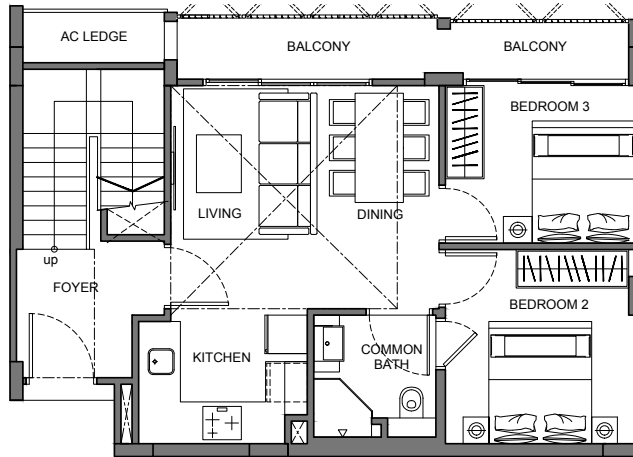


**TYPE D4**  
2-Bedroom  
51 sq m / 549 sq ft  
#04-01

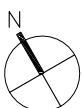
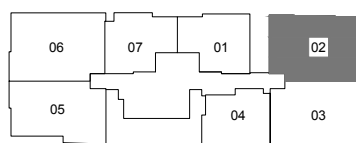


Floor areas are inclusive of PES, balconies, A/C ledges and voids. Floor area are approximate and subject to final survey. The plans are subject to changes as required or approved by relevant authorities. The balconies shall not be enclosed unless with approved balcony screens.

# 3-Bedroom



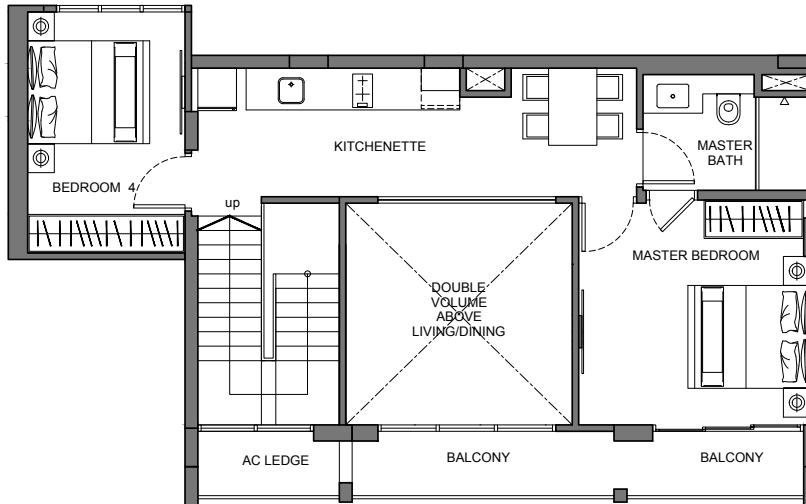
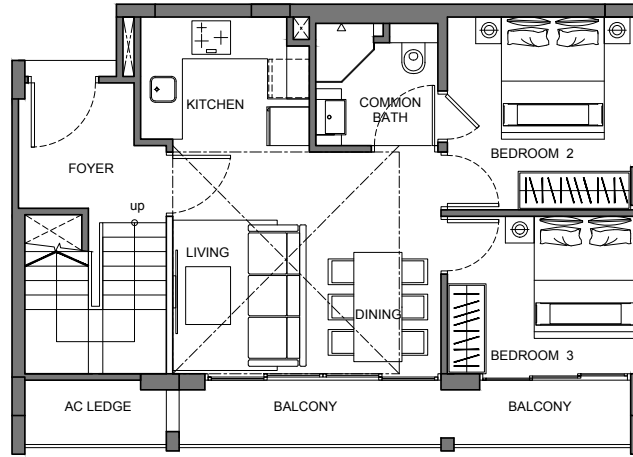
**TYPE E1**  
3-Bedroom  
129 sq m / 1389 sq ft  
#03-02



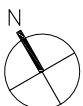
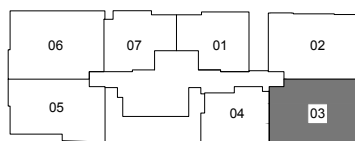
Floor areas are inclusive of PES, balconies, A/C ledges and voids. Floor area are approximate and subject to final survey. The plans are subject to changes as required or approved by relevant authorities. The balconies shall not be enclosed unless with approved balcony screens.



# 4-Bedroom

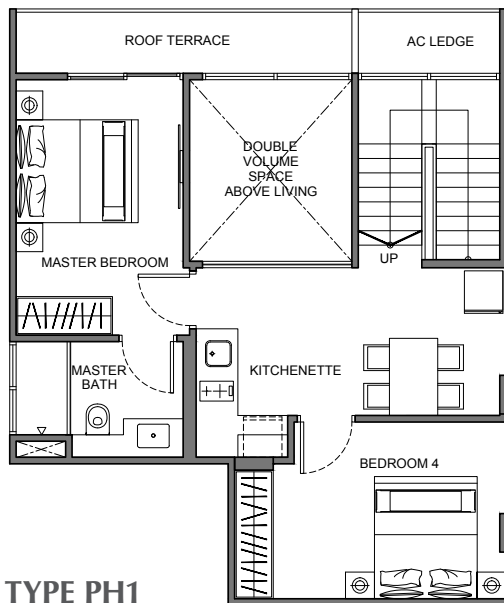
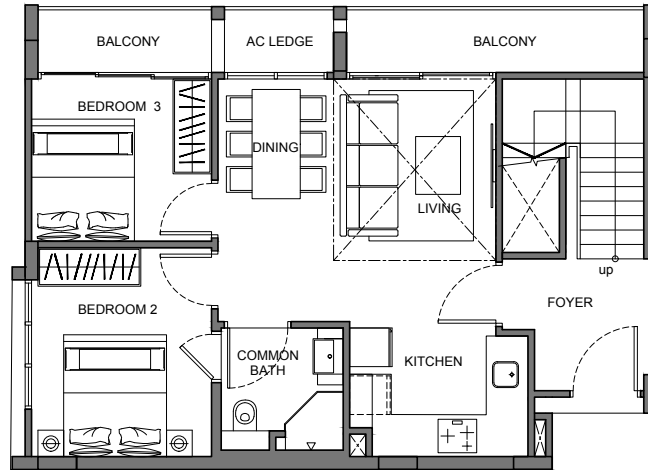


**TYPE E2**  
4-Bedroom  
140 sq m / 1507 sq ft  
#03-03

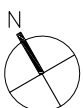
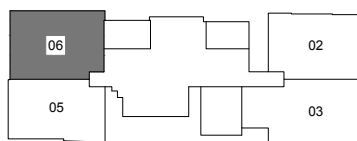


Floor areas are inclusive of PES, balconies, A/C ledges and voids. Floor area are approximate and subject to final survey. The plans are subject to changes as required or approved by relevant authorities. The balconies shall not be enclosed unless with approved balcony screens.

# Penthouse

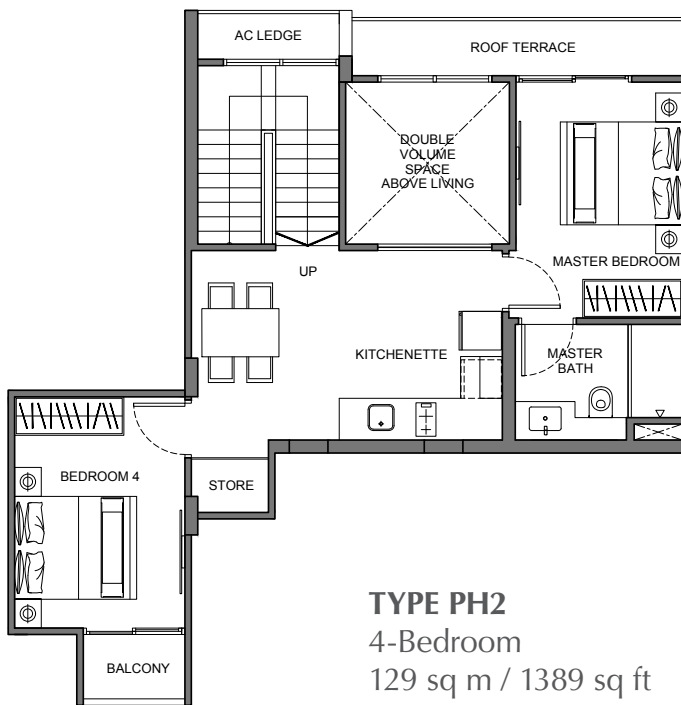
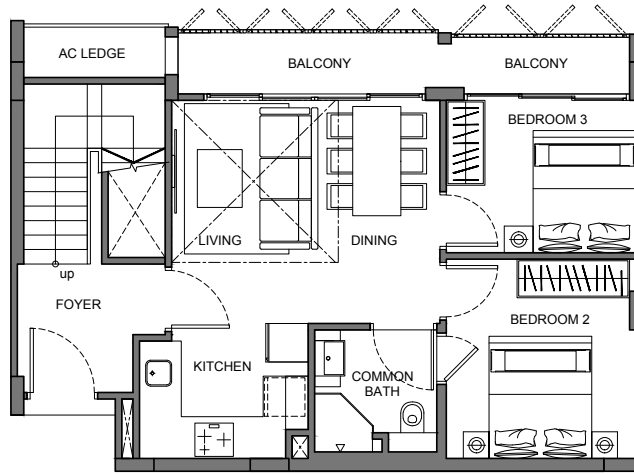


**TYPE PH1**  
4-Bedroom  
131 sq m / 1410 sq ft  
#05-06

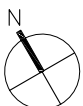
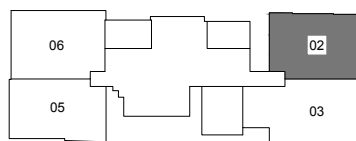


Floor areas are inclusive of PES, balconies, A/C ledges and voids. Floor area are approximate and subject to final survey. The plans are subject to changes as required or approved by relevant authorities. The balconies shall not be enclosed unless with approved balcony screens.

# Penthouse

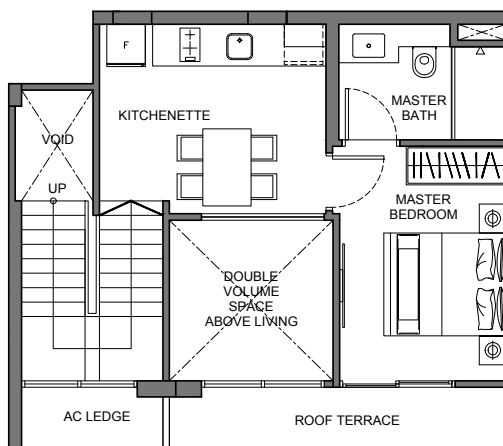
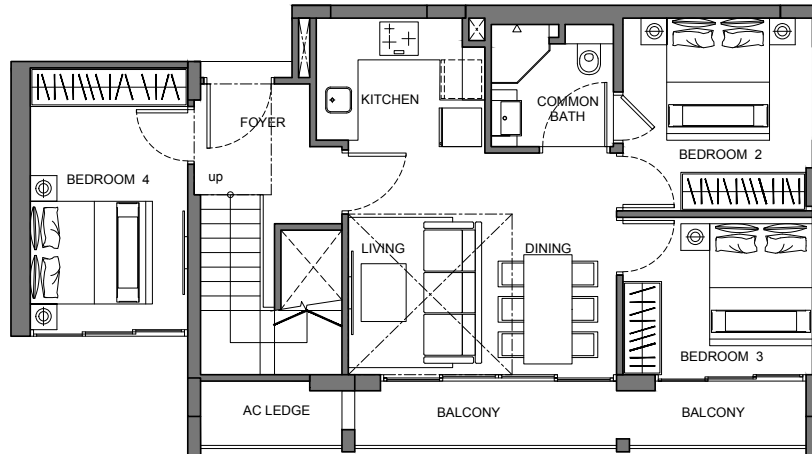


**TYPE PH2**  
 4-Bedroom  
 129 sq m / 1389 sq ft  
 #05-02



Floor areas are inclusive of PES, balconies, A/C ledges and voids. Floor area are approximate and subject to final survey. The plans are subject to changes as required or approved by relevant authorities. The balconies shall not be enclosed unless with approved balcony screens.

# Penthouse

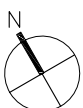
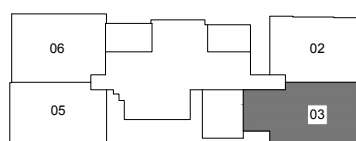


## TYPE PH3

4-Bedroom

126 sq m / 1356 sq ft

#05-03



Floor areas are inclusive of PES, balconies, A/C ledges and voids. Floor area are approximate and subject to final survey. The plans are subject to changes as required or approved by relevant authorities. The balconies shall not be enclosed unless with approved balcony screens.