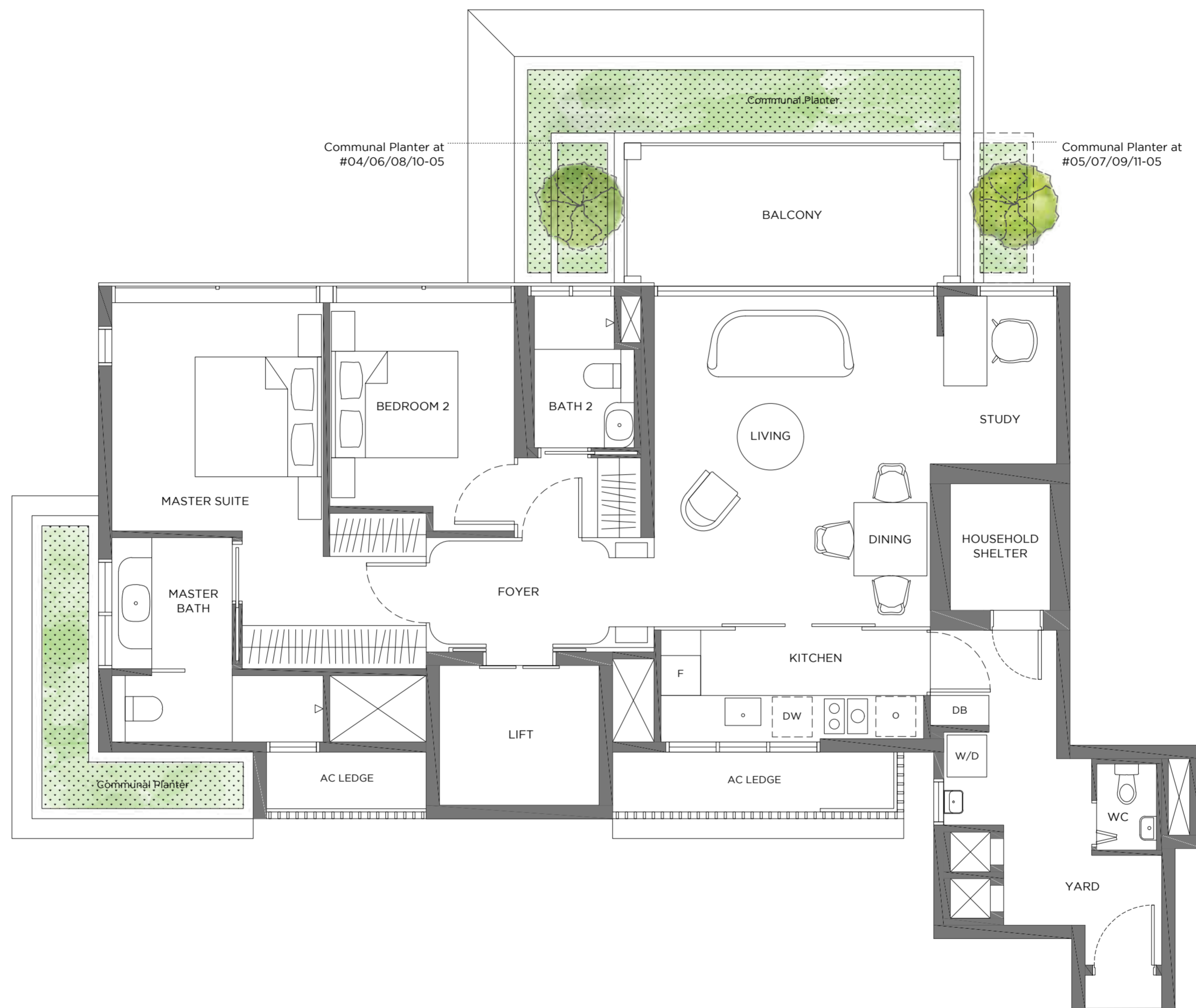


Tower 1
 2-Bedroom + Study
 Type 2BR+S
 120 sqm / 1,292 sqft
 Unit #04-05 to #11-05



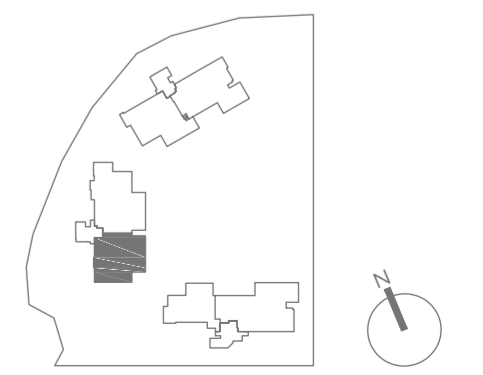
Plans are subject to change/amendments as may be required and/or approved by the Developer and/or the relevant authorities and do not form part of any offer or contract.



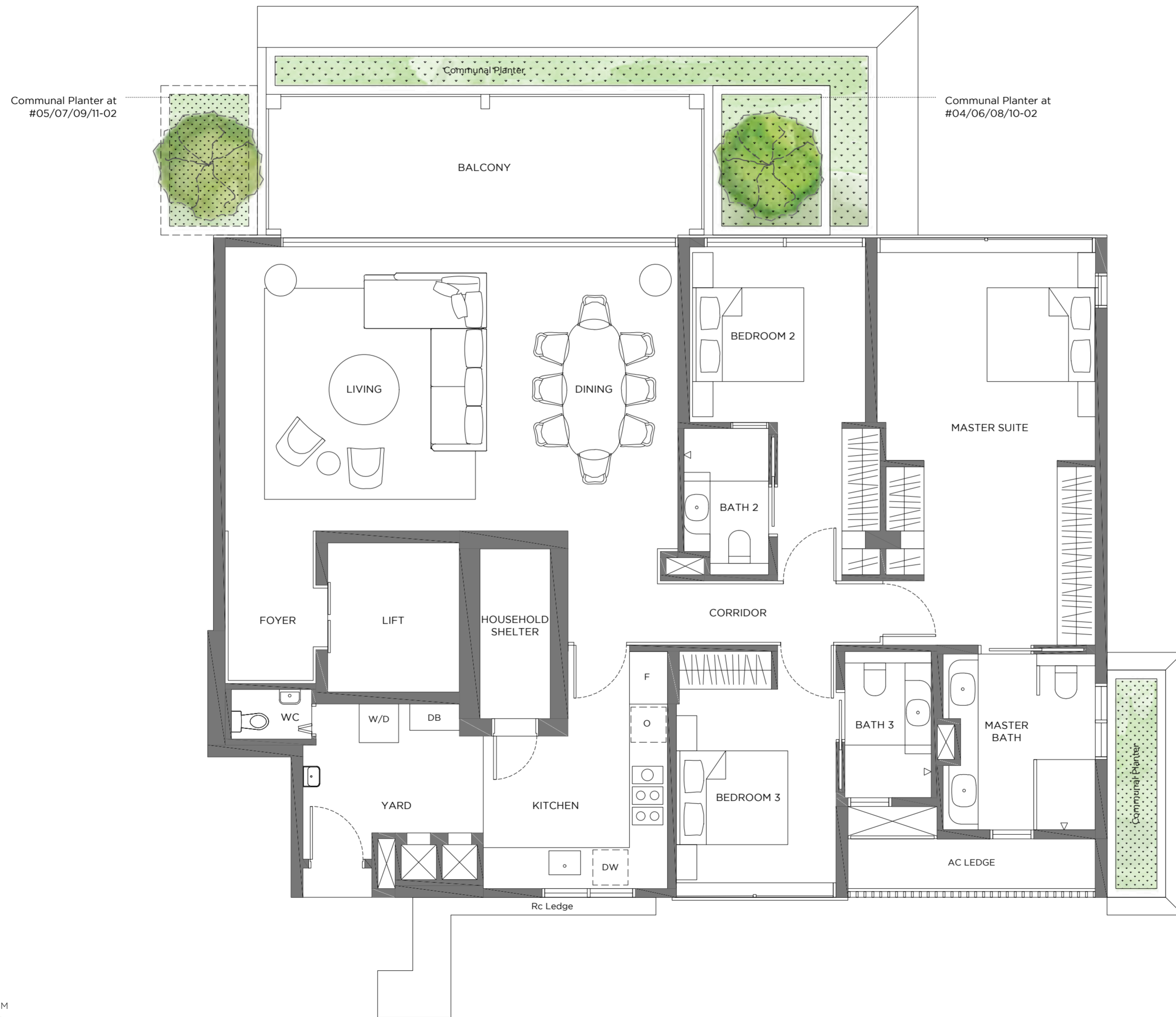
Tower 2
 3-Bedroom
 Type 3BR-a
 167 sqm / 1,798 sqft
 Unit #03-04 to 11-04



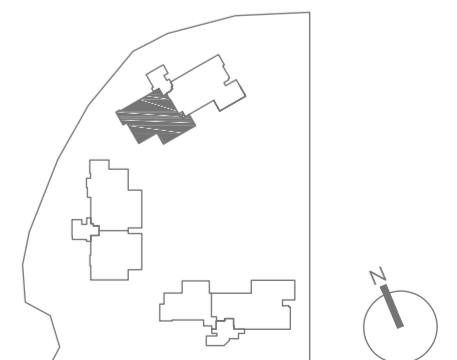
Plans are subject to change/amendments as may be required and/or approved by the Developer and/or the relevant authorities and do not form part of any offer or contract.



Tower 3
 3-Bedroom
 Type 3BR-b
 173 sqm / 1,862 sqft
 Unit #04-02 to 11-02



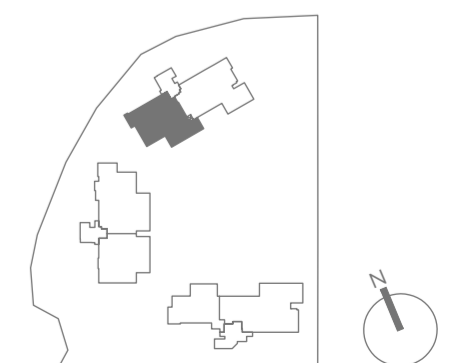
Plans are subject to change/amendments as may be required and/or approved by the Developer and/or the relevant authorities and do not form part of any offer or contract.



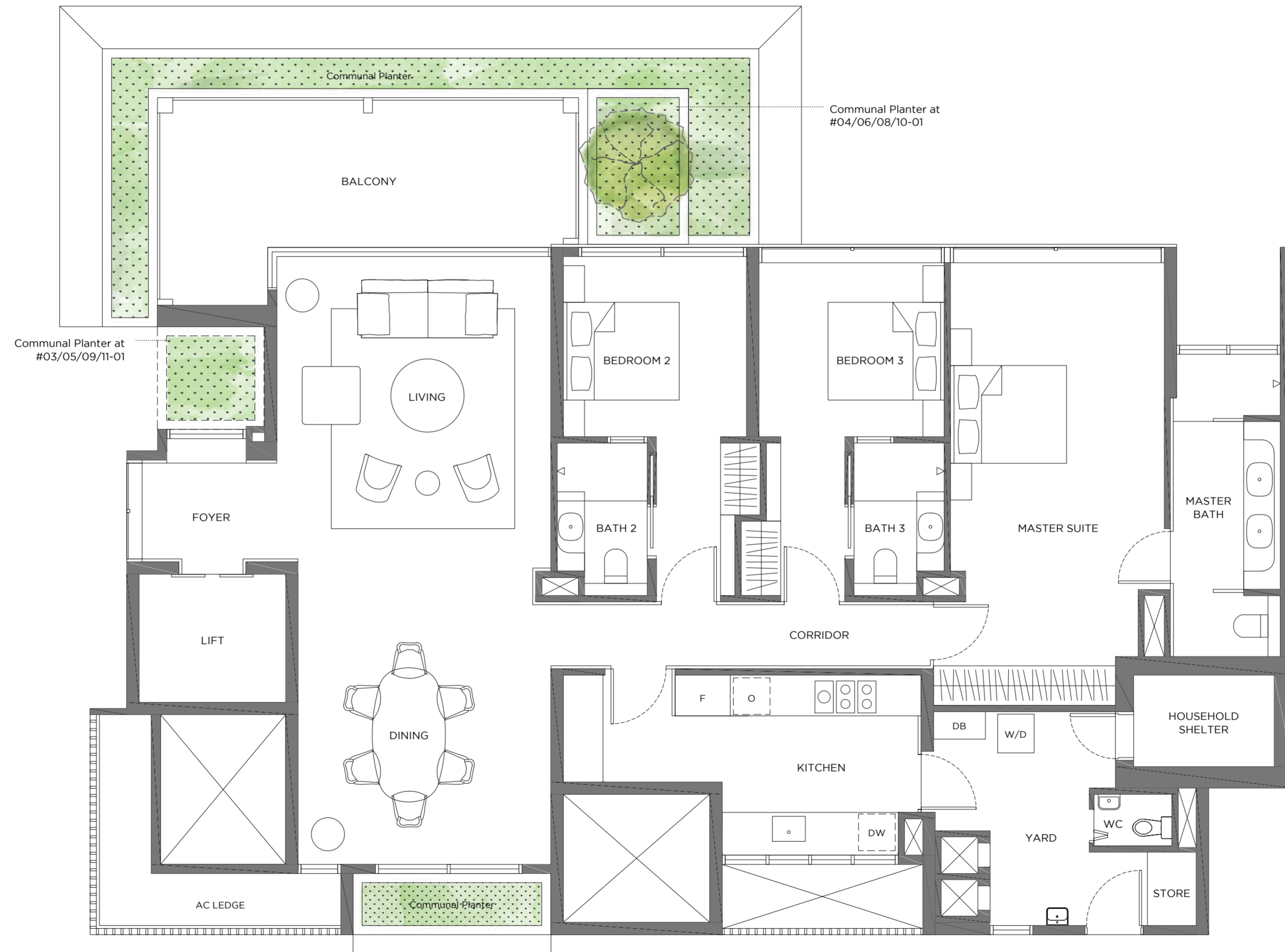
Tower 3
 3-Bedroom
 Type 3BR-b1
 173 sqm / 1,862 sqft
 Unit #03-02



Plans are subject to change/amendments as may be required and/or approved by the Developer and/or the relevant authorities and do not form part of any offer or contract.

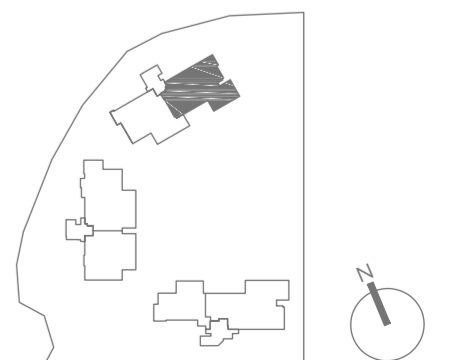


Tower 3
 3-Bedroom
 Type 3BR-c
 190 sqm / 2045 sqft
 Unit #03-01 to 11-01

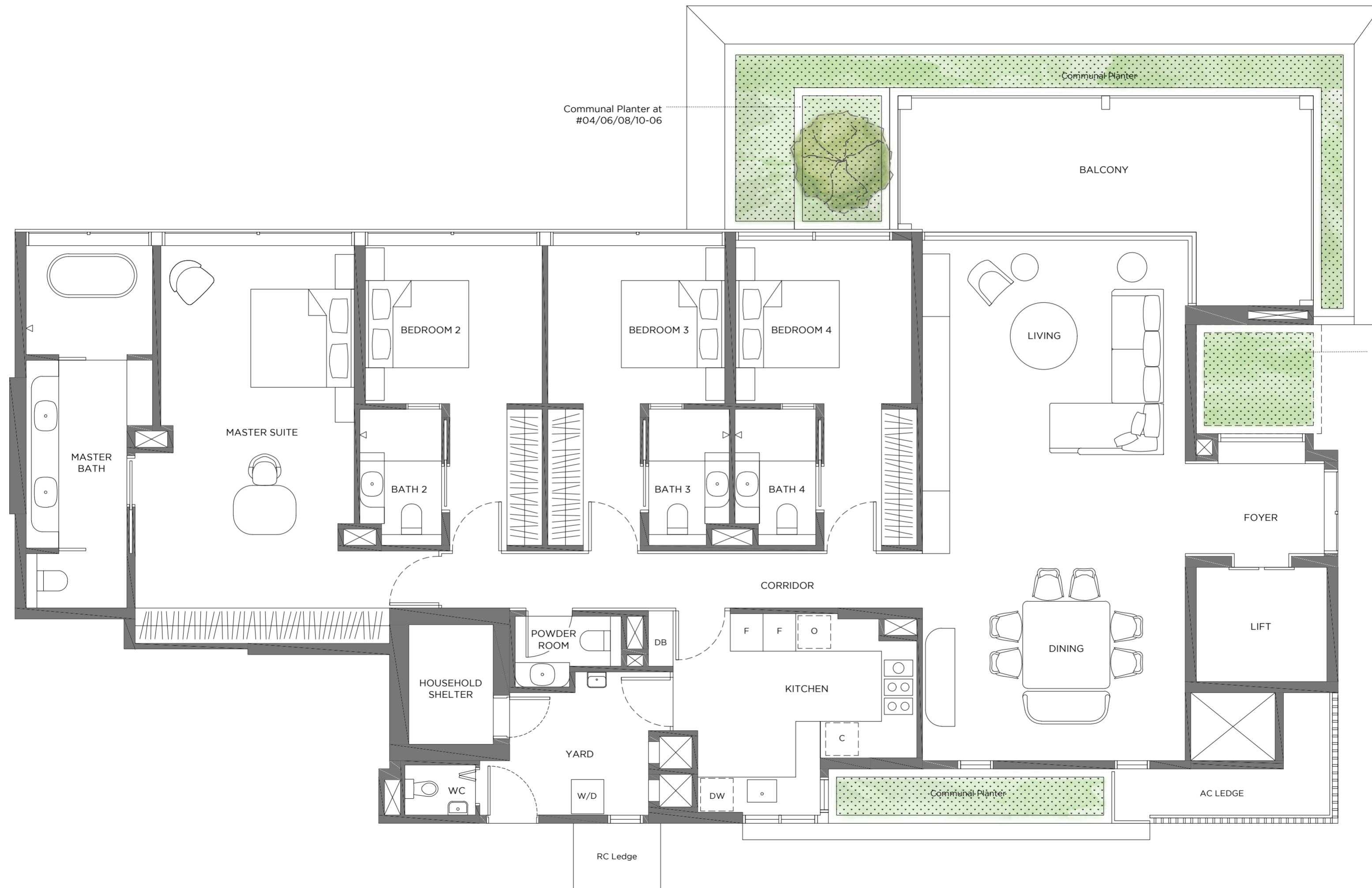


0 1 5M

Plans are subject to change/amendments as may be required and/or approved by the Developer and/or the relevant authorities and do not form part of any offer or contract.



Tower 1
 4-Bedroom
 Type 4BR-a
 232 sqm / 2,497 sqft
 Unit #04-06 to 11-06

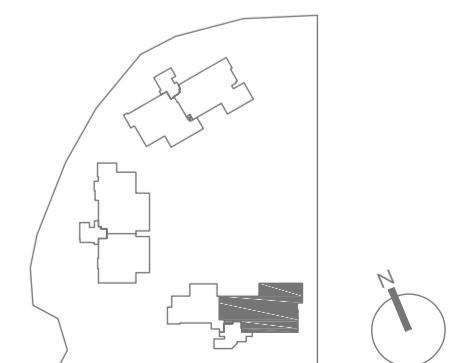


Communal Planter at #04/06/08/10-06

Communal Planter at #05/07/09/11-06

0 1 5M

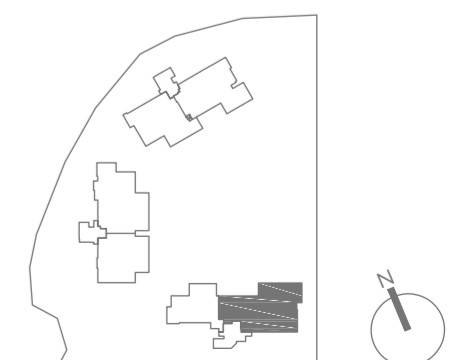
Plans are subject to change/amendments as may be required and/or approved by the Developer and/or the relevant authorities and do not form part of any offer or contract.



Tower 1
 4-Bedroom
 Type 4BR-a1
 232 sqm / 2,497 sqft
 Unit #03-06



Plans are subject to change/amendments as may be required and/or approved by the Developer and/or the relevant authorities and do not form part of any offer or contract.



Tower 2
 4 Bedroom
 Type 4BR-b
 214 sqm / 2,303 sqft
 Unit #03-03 to 11-03



Plans are subject to change/amendments as may be required and/or approved by the Developer and/or the relevant authorities and do not form part of any offer or contract.

