

# TYPE PH1

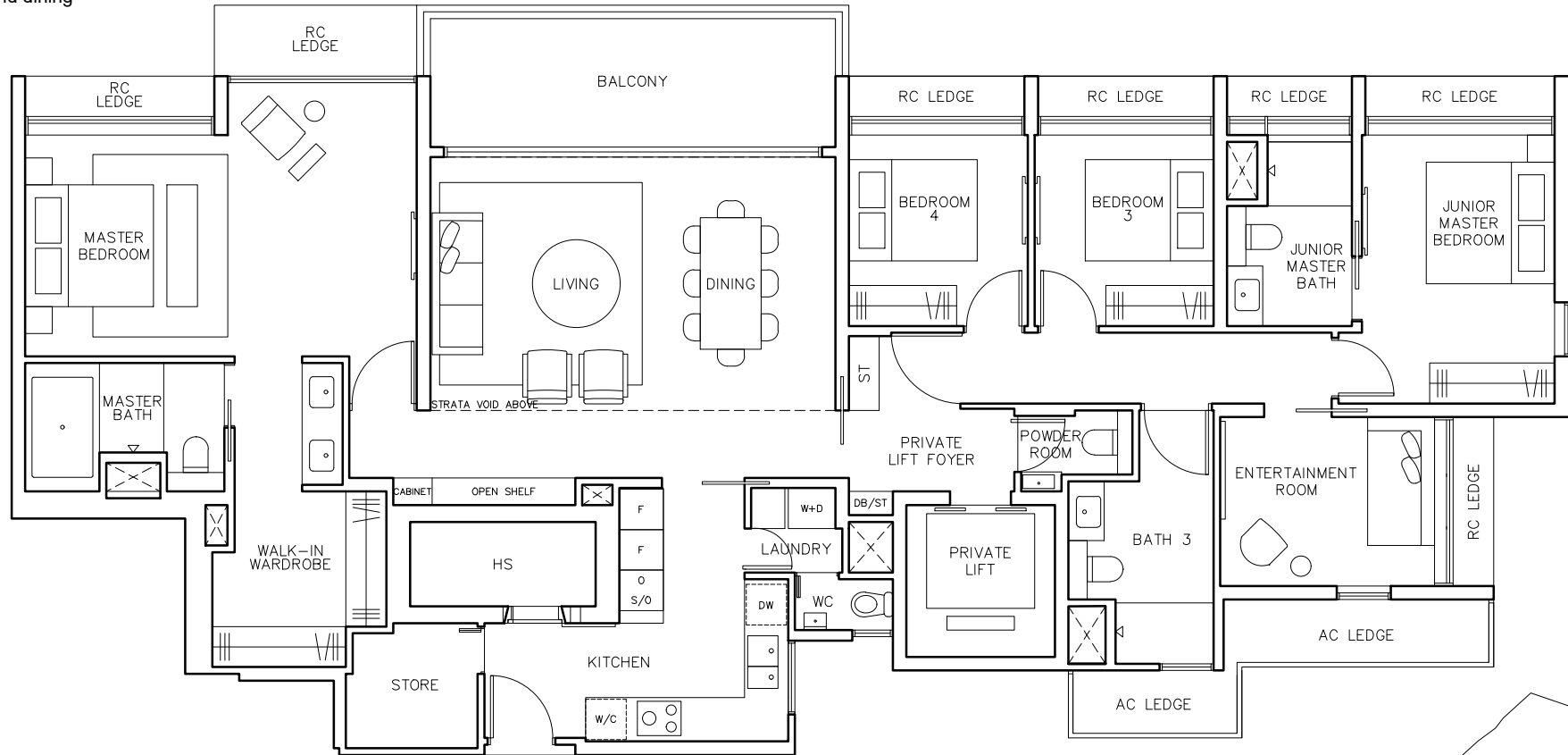
213 sqm (2293 sqft)  
 Inclusive of strata void area of 26 sqm/ 280 sqft  
 above living and dining

# Penthouse

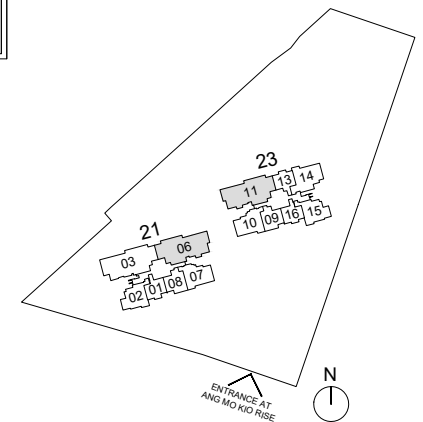
#25-06

\*Mirrored unit

#25-11\*



Areas include AC ledge and balcony, where applicable. All RC ledges are excluded from strata area and non-load bearing. The plans are subjected to change as may be required by relevant authorities. All areas and measurements stated herein as approximate and subject to final survey.

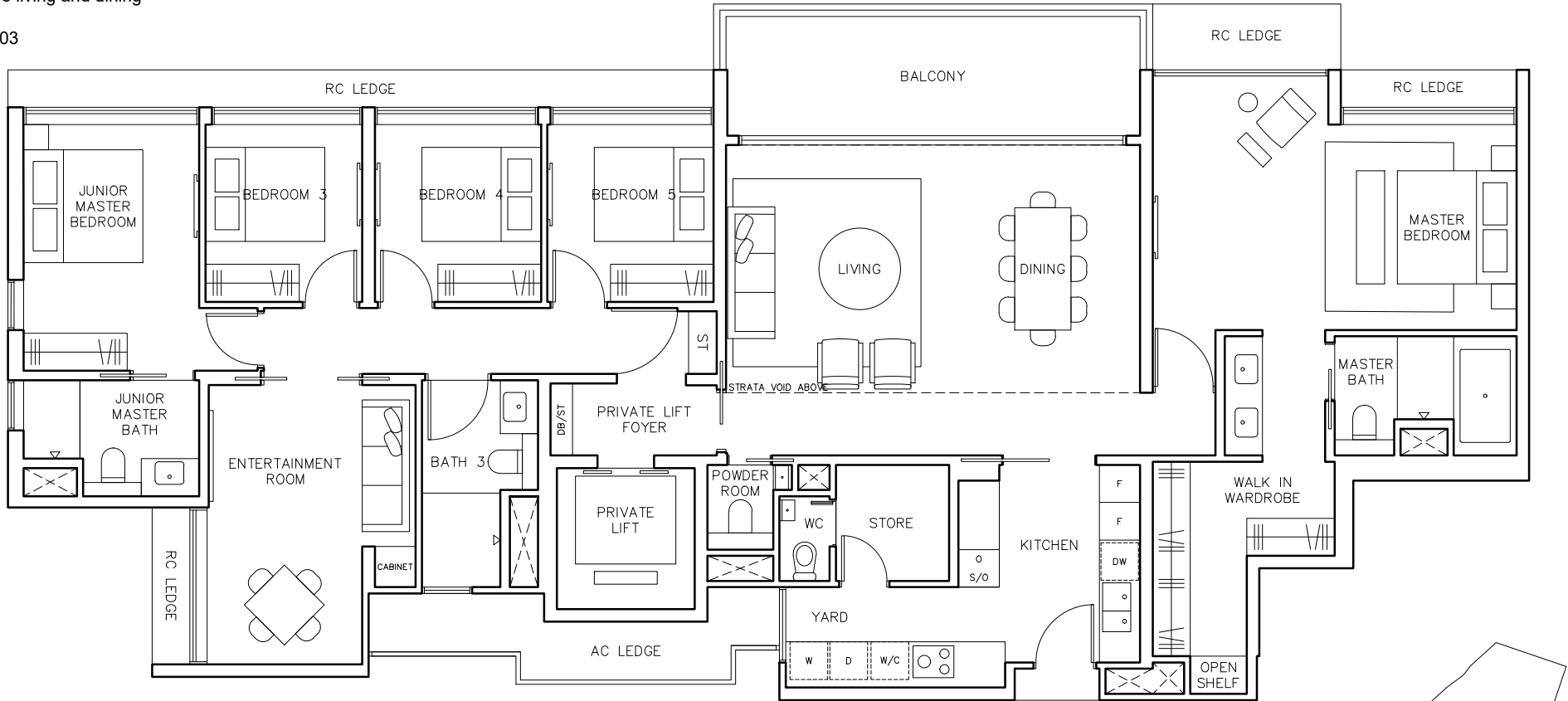


# TYPE PH2

232 sqm (2497 sqft)  
 Inclusive of strata void area of 29 sqm/ 312 sqft  
 above living and dining

# Penthouse

#25-03



Areas include AC ledge and balcony, where applicable. All RC ledges are excluded from strata area and non-load bearing. The plans are subjected to change as may be required by relevant authorities. All areas and measurements stated herein as approximate and subject to final survey.

