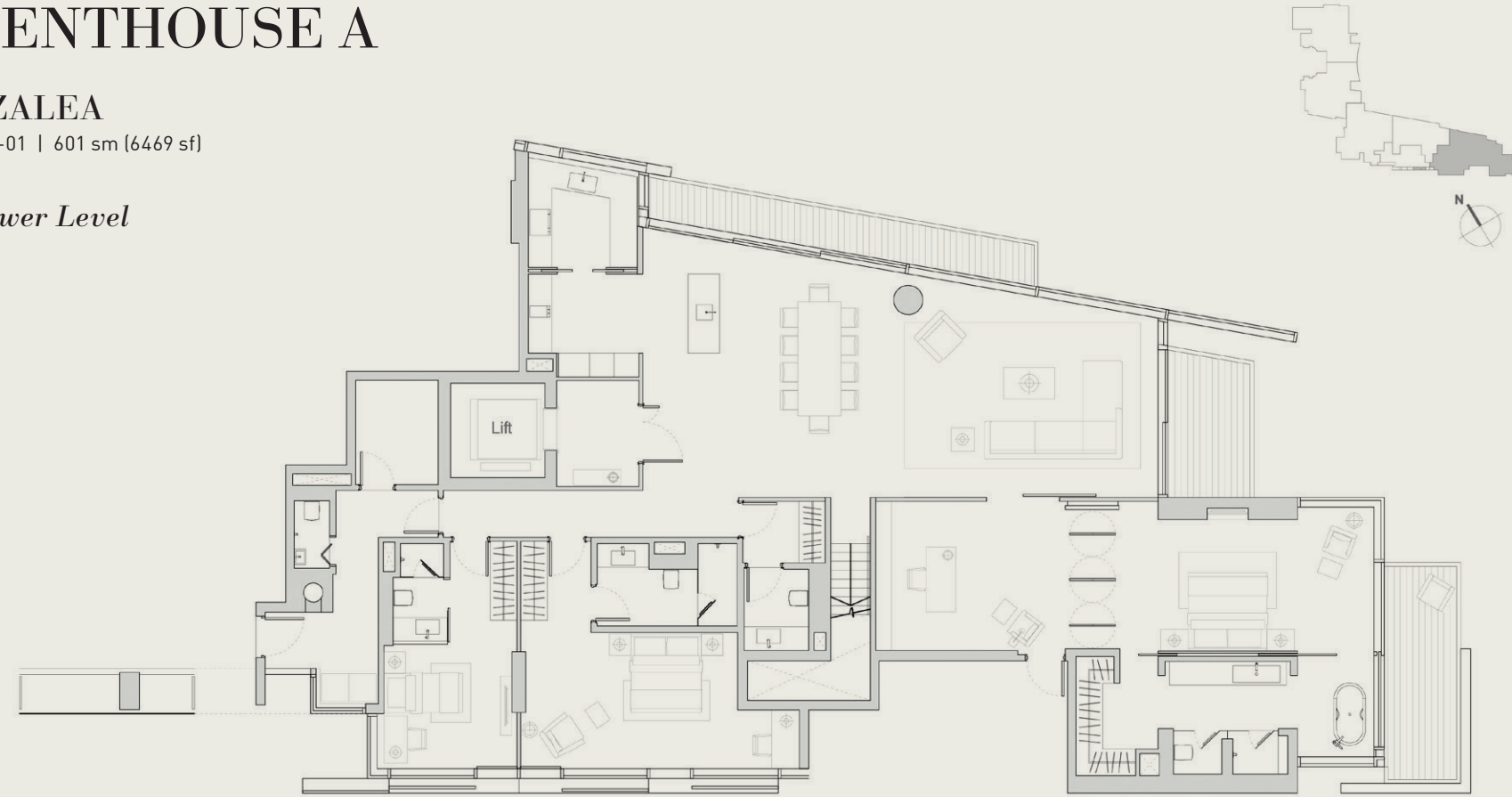


# PENTHOUSE A

## AZALEA

#10-01 | 601 sm (6469 sf)

### Lower Level

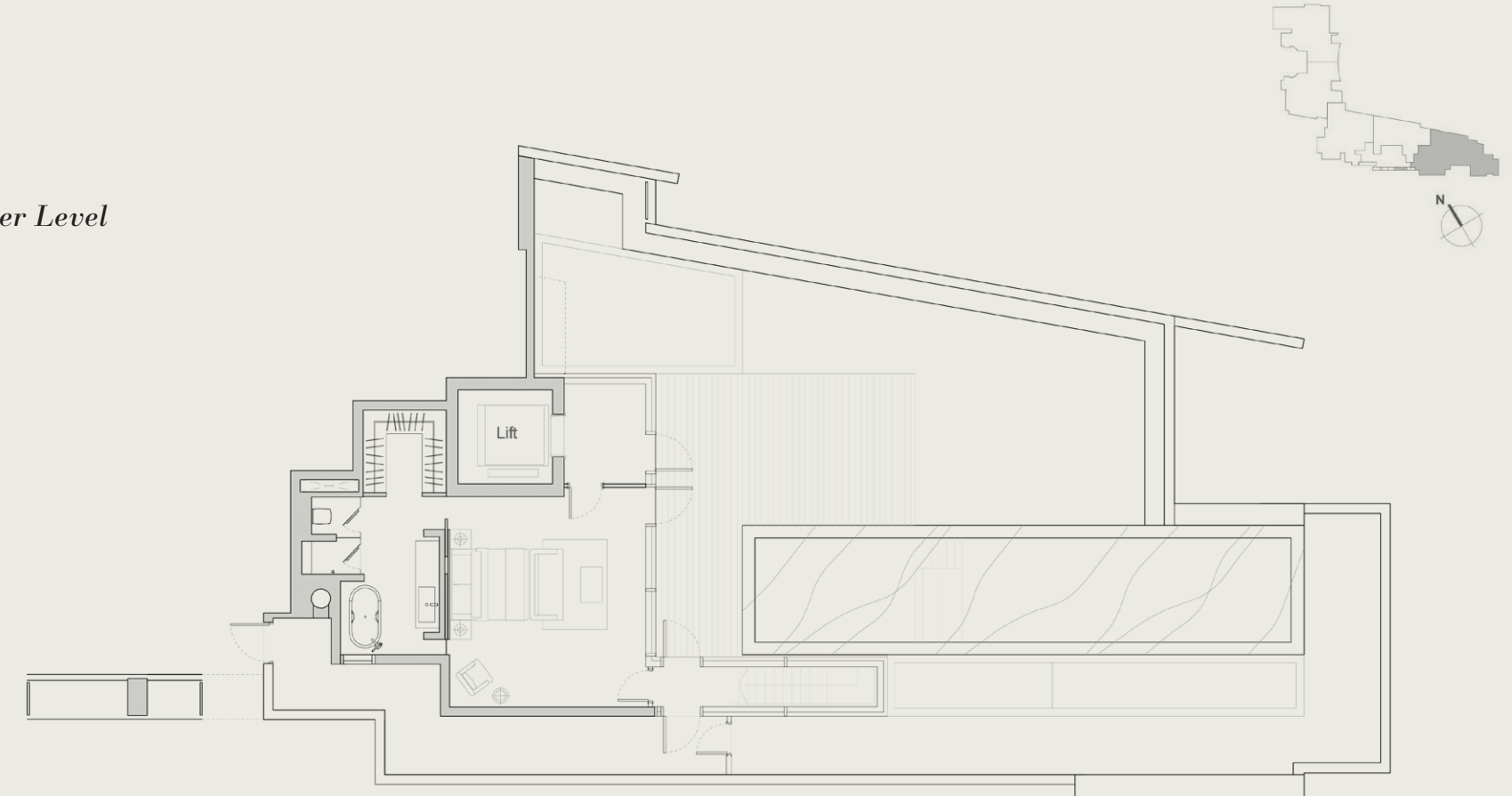


#### NOTE:

Low wall is built up to the height of approximately 540mm only.

Areas include A/C ledge, balcony, PES and void area. Furnitures shown in the plan are for illustration purpose only.

### Upper Level



#### NOTE:

Low wall is built up to the height of approximately 540mm only.

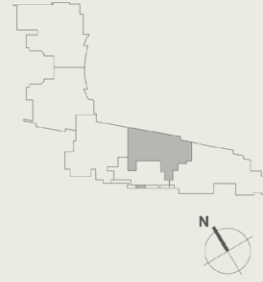
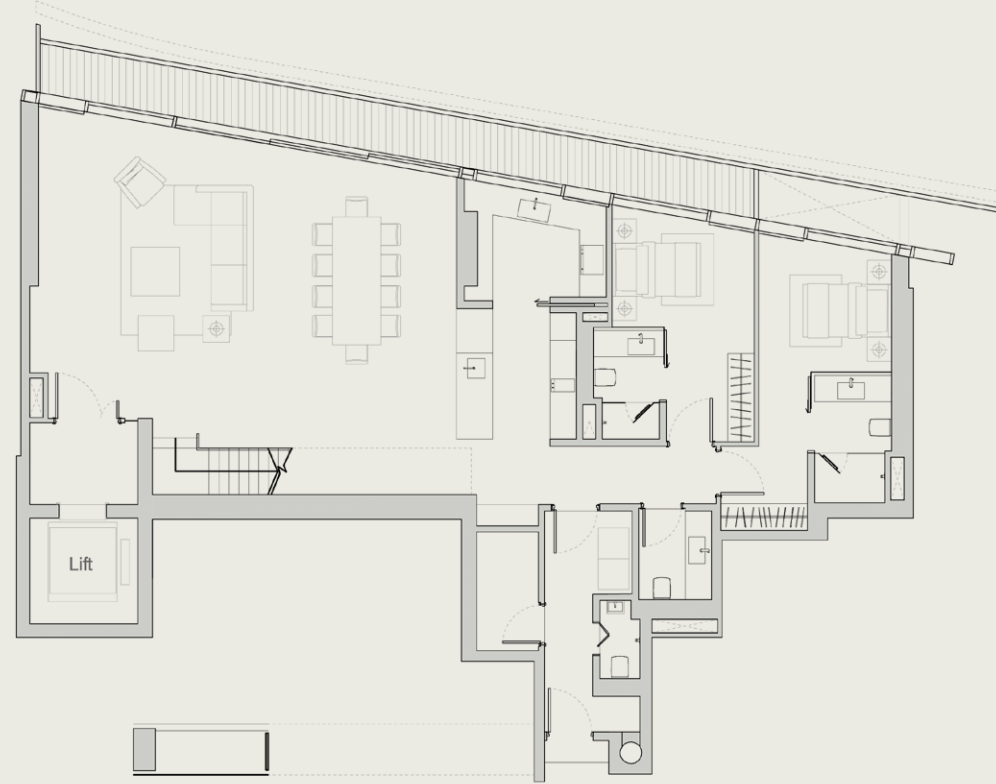
Areas include A/C ledge, balcony, PES and void area. Furnitures shown in the plan are for illustration purpose only.

# PENTHOUSE B

## BEGONIA

#11-02 | 383 sm (4221 sf)

### *Lower Level*

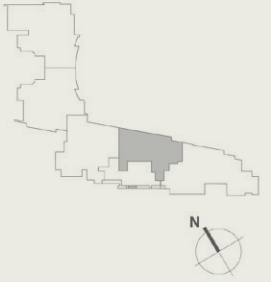
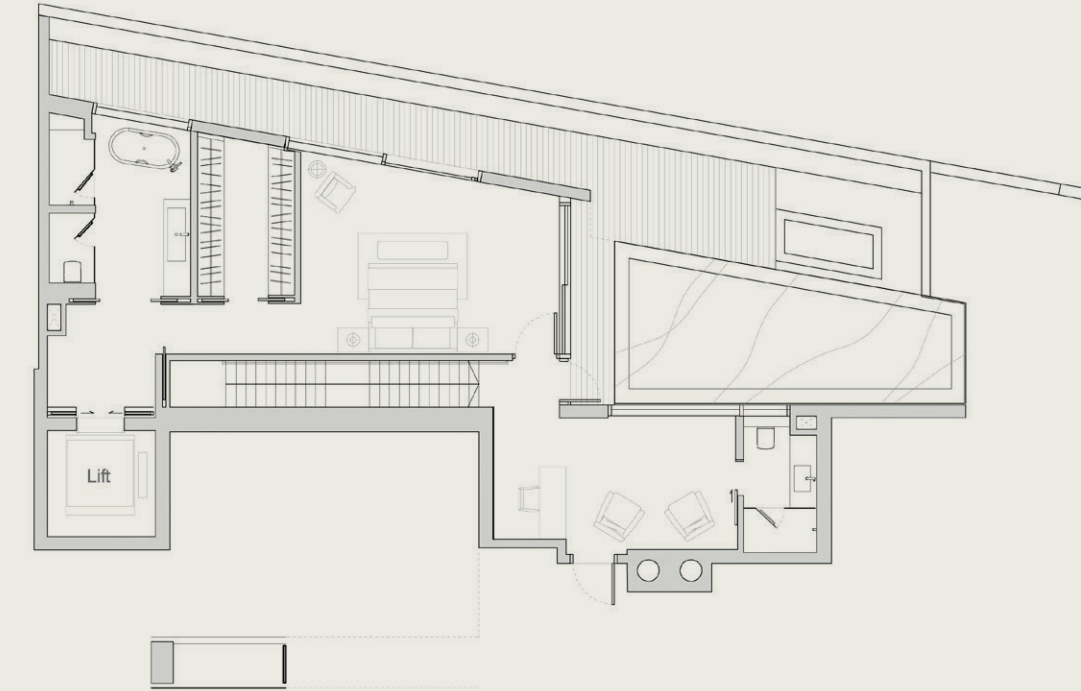


#### NOTE:

Low wall is built up to the height of approximately 540mm only.

Areas include A/C ledge, balcony, PES and void area. Furnitures shown in the plan are for illustration purpose only.

### *Upper Level*



#### NOTE:

Low wall is built up to the height of approximately 540mm only.

Areas include A/C ledge, balcony, PES and void area. Furnitures shown in the plan are for illustration purpose only.

# PENTHOUSE C

## CAMELLIA

#11-03 | 539 sm (5802 sf)

### Lower Level

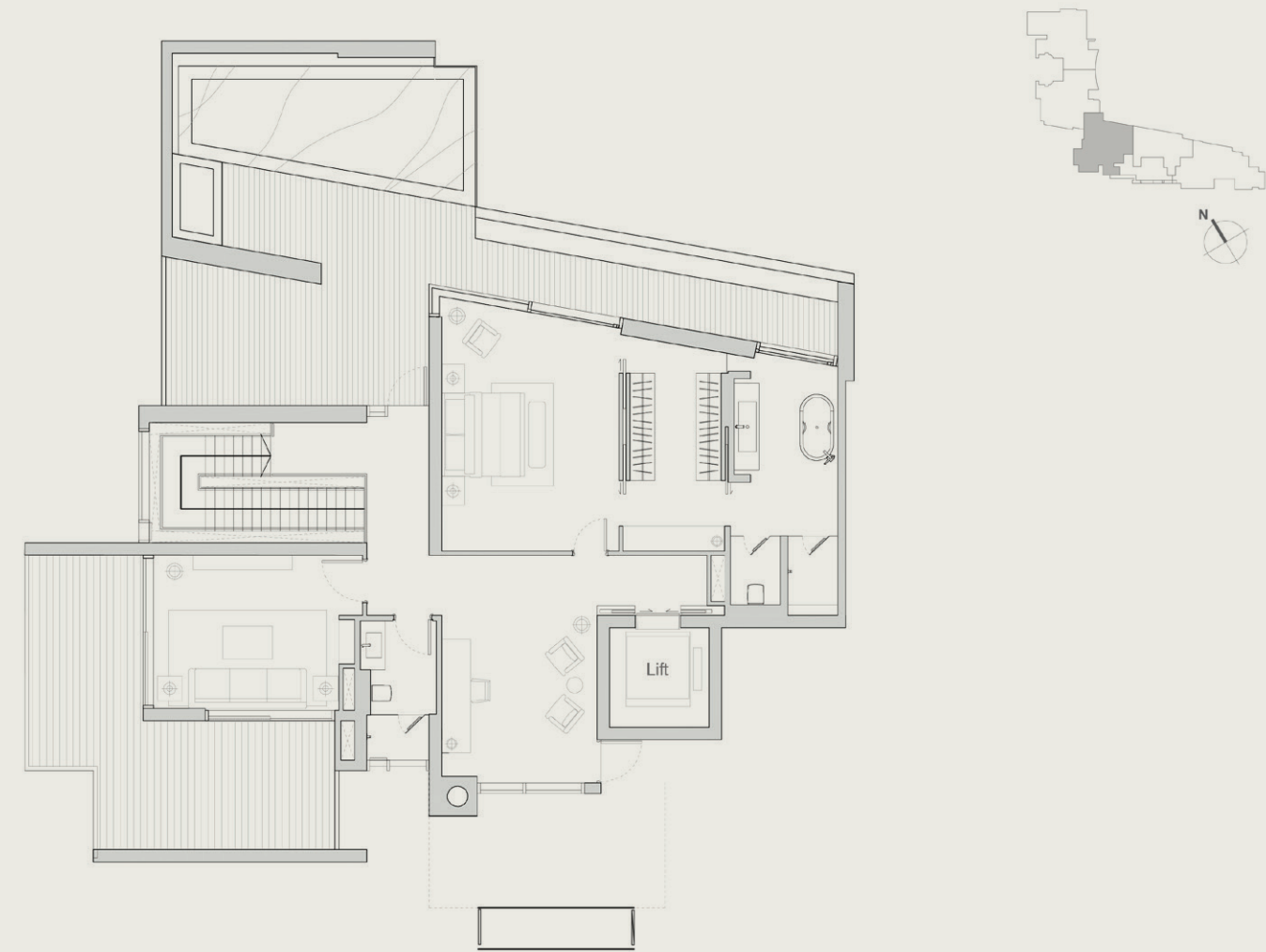


#### NOTE:

Low wall is built up to the height of approximately 540mm only.

Areas include A/C ledge, balcony, PES and void area. Furnitures shown in the plan are for illustration purpose only.

### Upper Level



#### NOTE:

Low wall is built up to the height of approximately 540mm only.

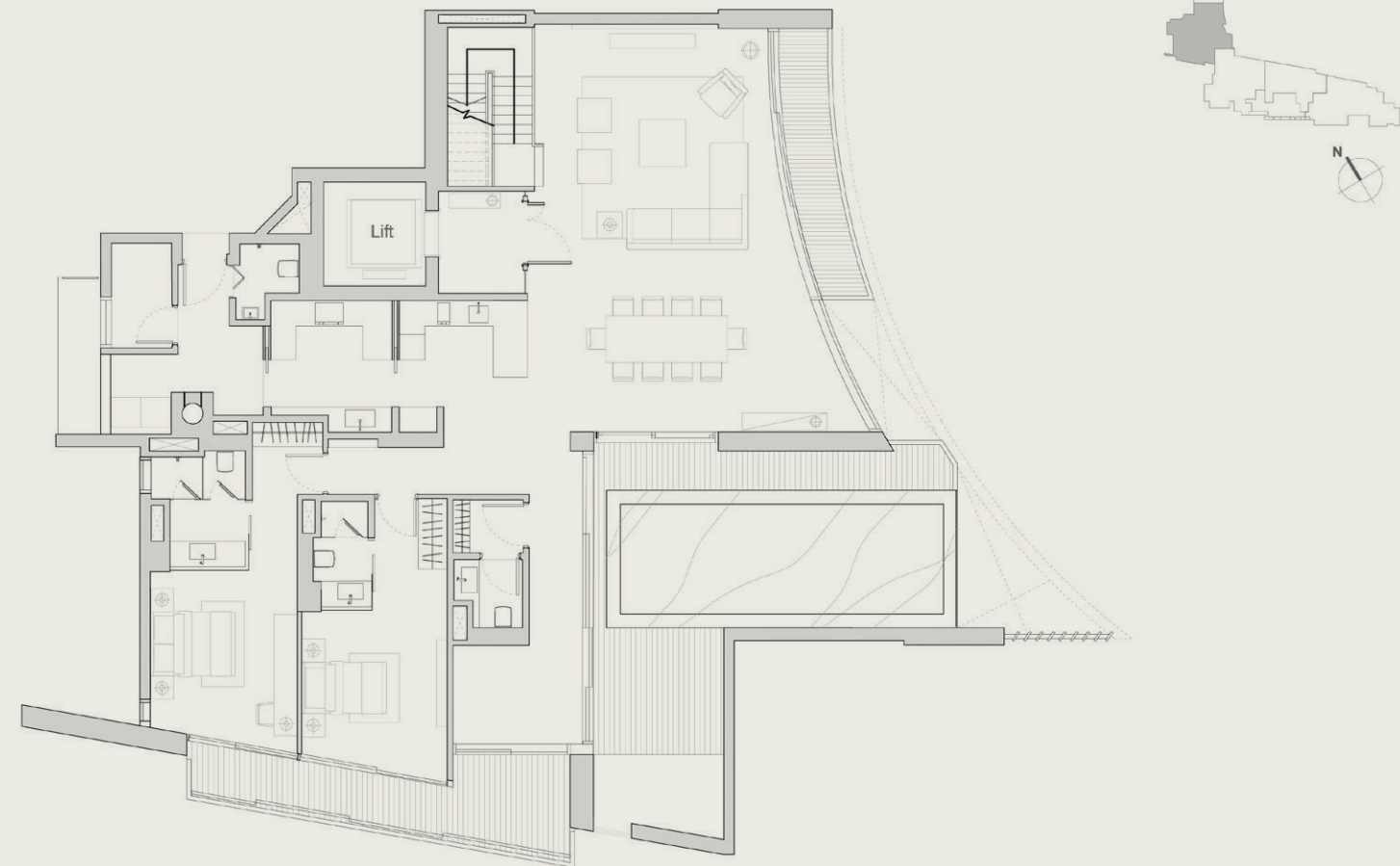
Areas include A/C ledge, balcony, PES and void area. Furnitures shown in the plan are for illustration purpose only.

# PENTHOUSE D

## DAFFODIL

#11-04 | 554 sm (5964 sf)

### *Lower Level*

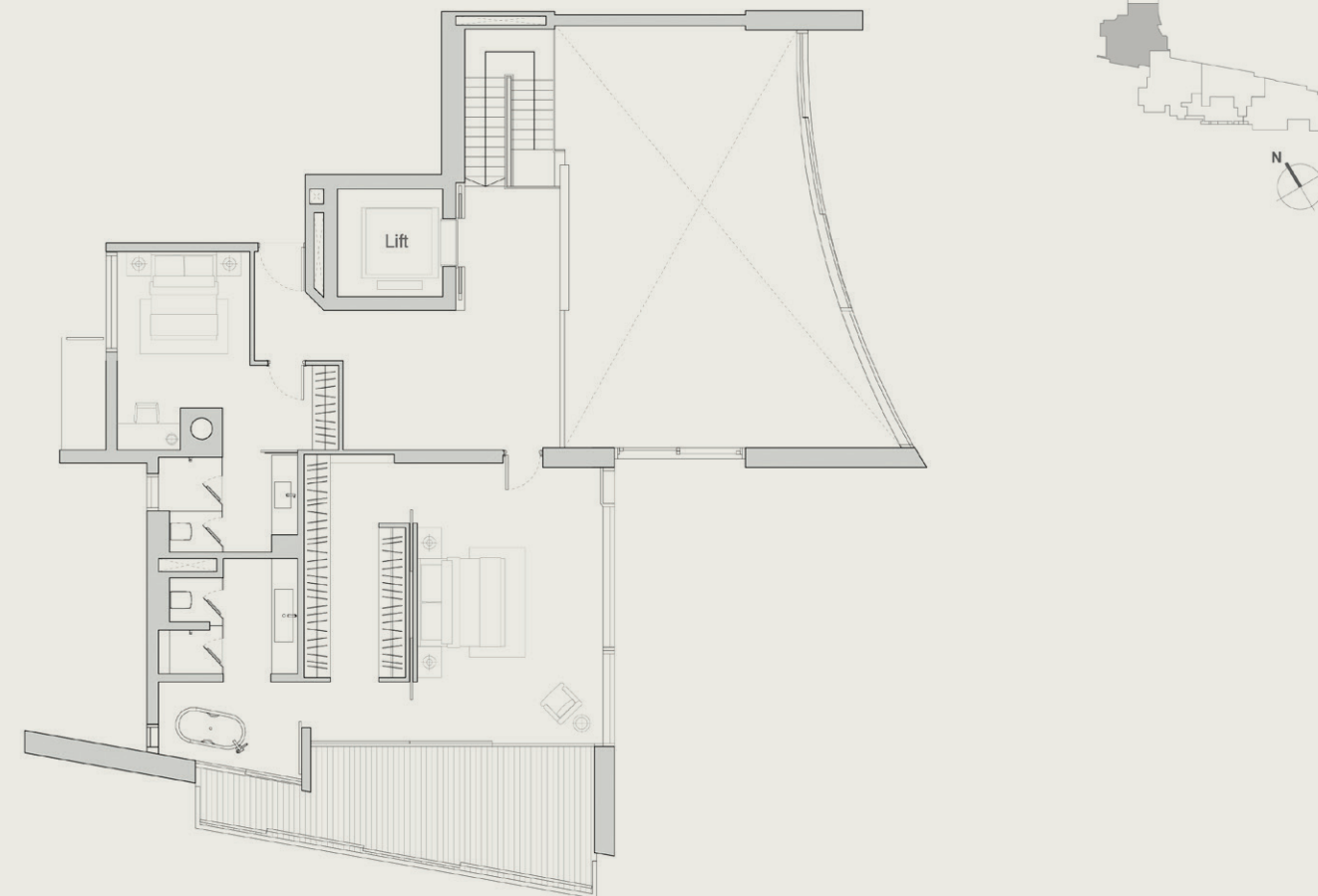


NOTE:

Low wall is built up to the height of approximately 540mm only.

Areas include A/C ledge, balcony, PES and void area. Furnitures shown in the plan are for illustration purpose only.

### *Upper Level*



NOTE:

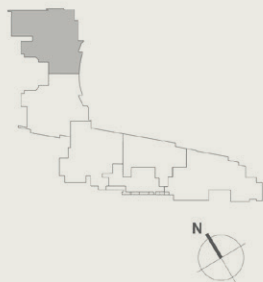
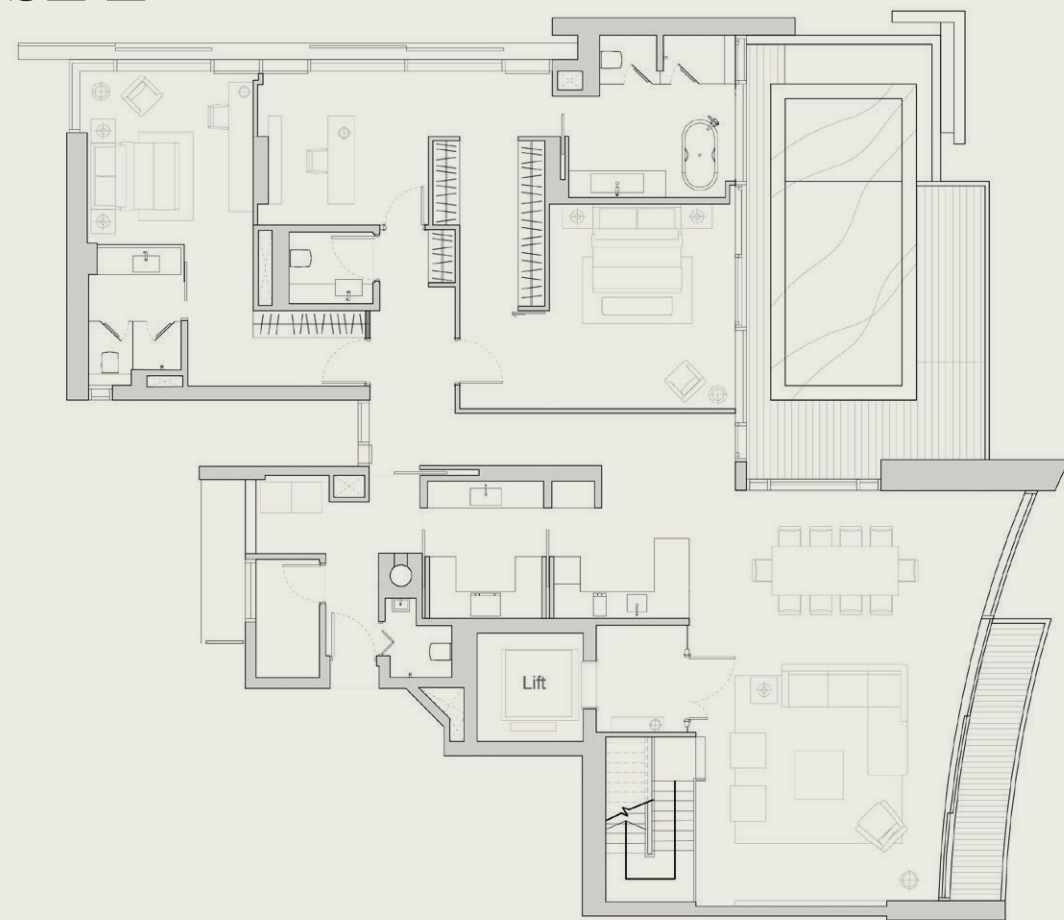
Low wall is built up to the height of approximately 540mm only.

Areas include A/C ledge, balcony, PES and void area. Furnitures shown in the plan are for illustration purpose only.

# PENTHOUSE E

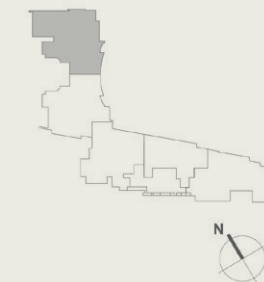
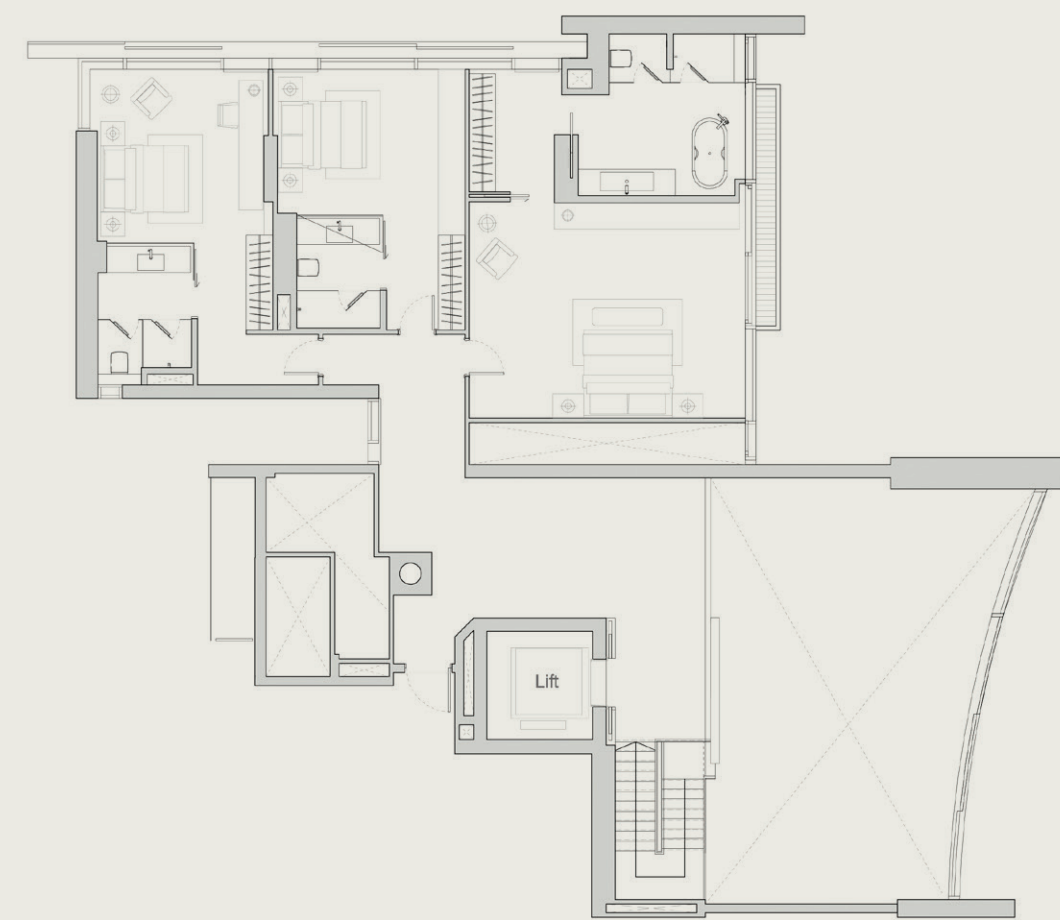
EDELWEISS  
#11-05 | 614 sm (6610 sf)

*Lower Level*



NOTE:  
Low wall is built up to the height of approximately 540mm only.  
Areas include A/C ledge, balcony, PES and void area. Furnitures shown in the plan are for illustration purpose only.

*Upper Level*

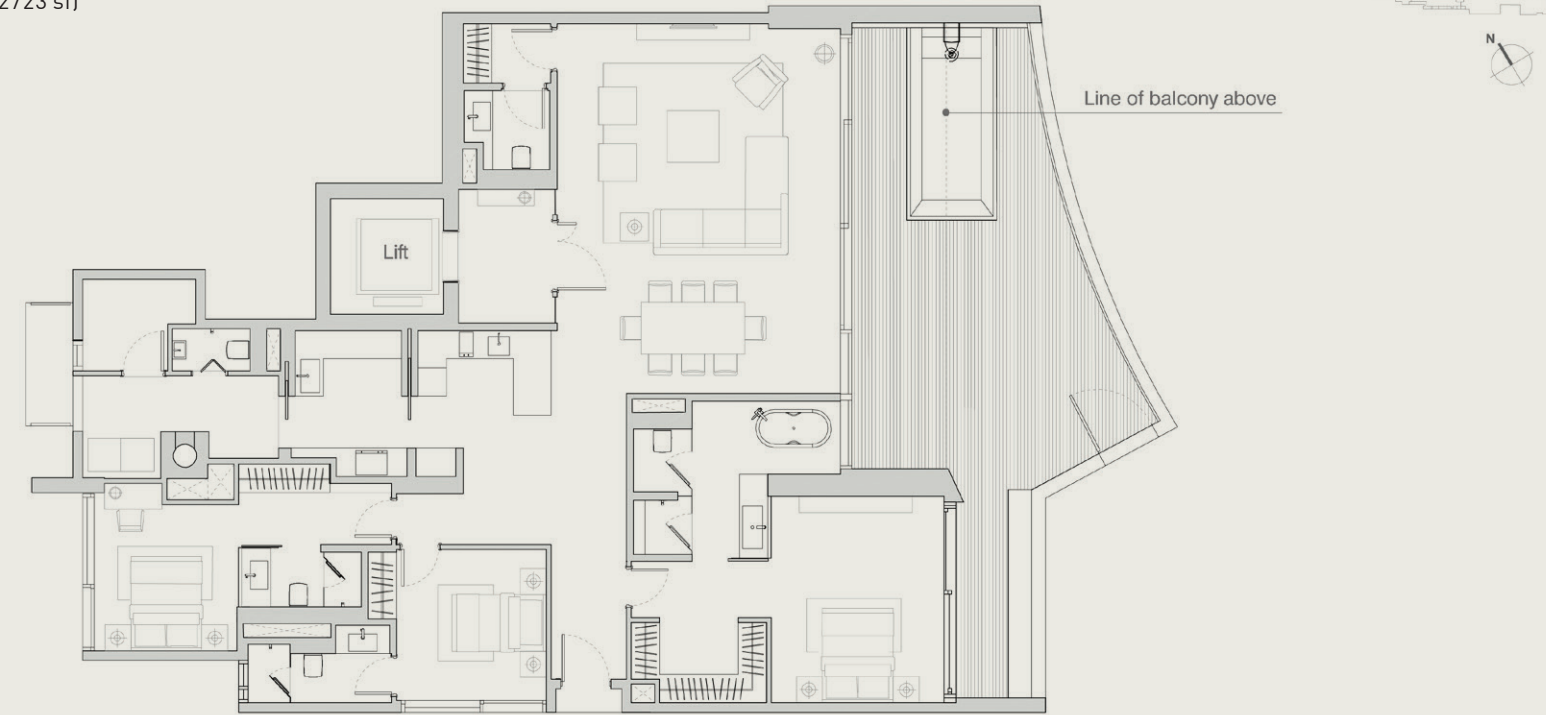


NOTE:  
Low wall is built up to the height of approximately 540mm only.  
Areas include A/C ledge, balcony, PES and void area. Furnitures shown in the plan are for illustration purpose only.

# GARDEN VILLA

## DAFFODIL

#03-04 | 253 sm (2723 sf)



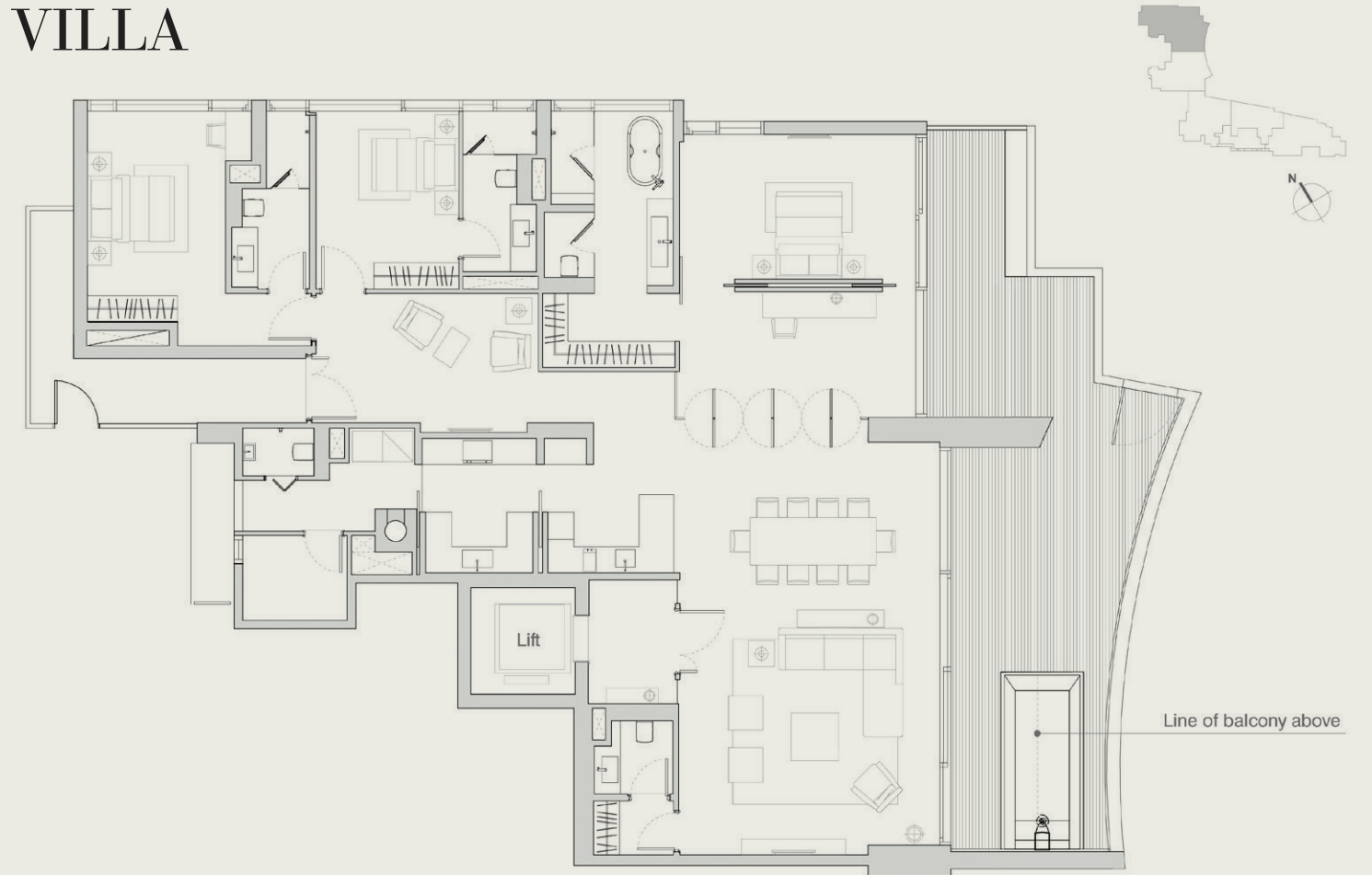
### NOTE:

Low wall is built up to the height of approximately 540mm only.  
Areas include A/C ledge, balcony, PES and void area. Furnitures shown in the plan are for illustration purpose only.

# GARDEN VILLA

## EDELWEISS

#03-05 | 328 sm (3531 sf)



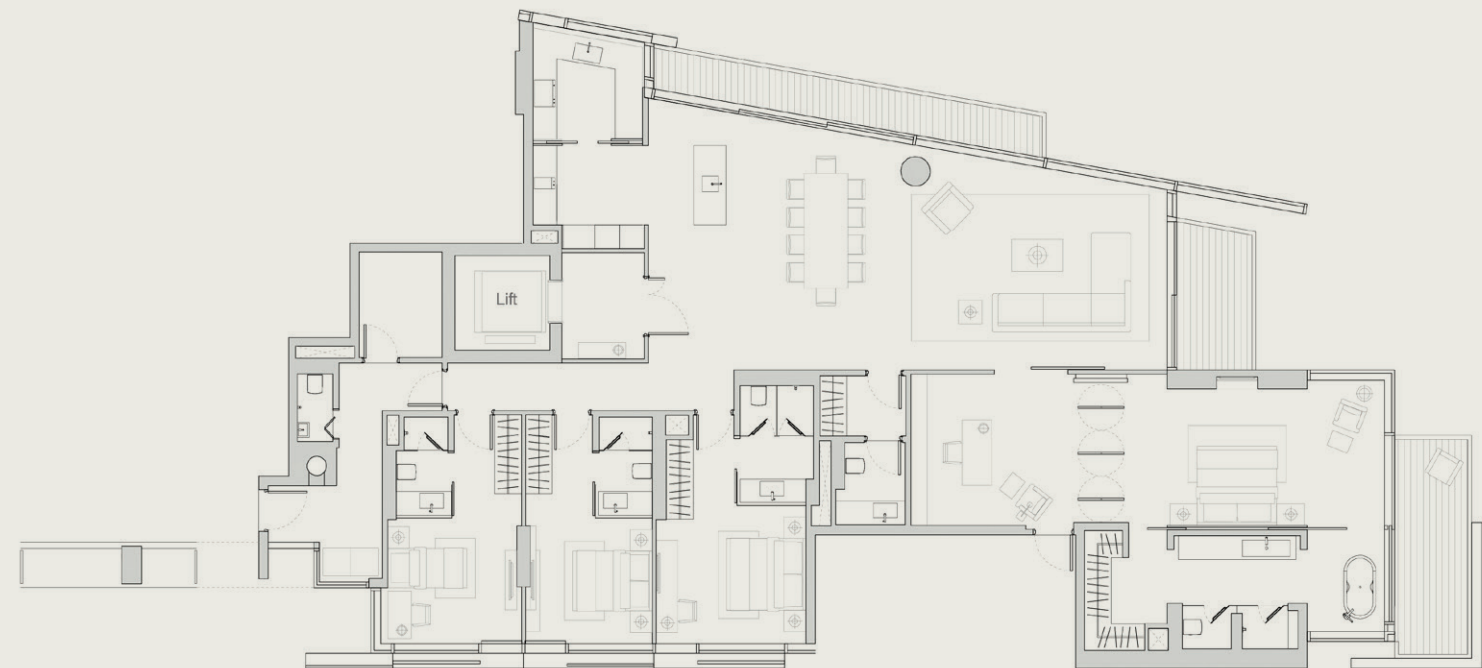
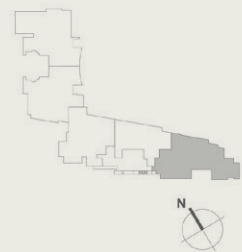
### NOTE:

Low wall is built up to the height of approximately 540mm only.  
Areas include A/C ledge, balcony, PES and void area. Furnitures shown in the plan are for illustration purpose only.

# TYPE A

## AZALEA

#05-01 to #09-01 | 315 sm (3391 sf)



### NOTE:

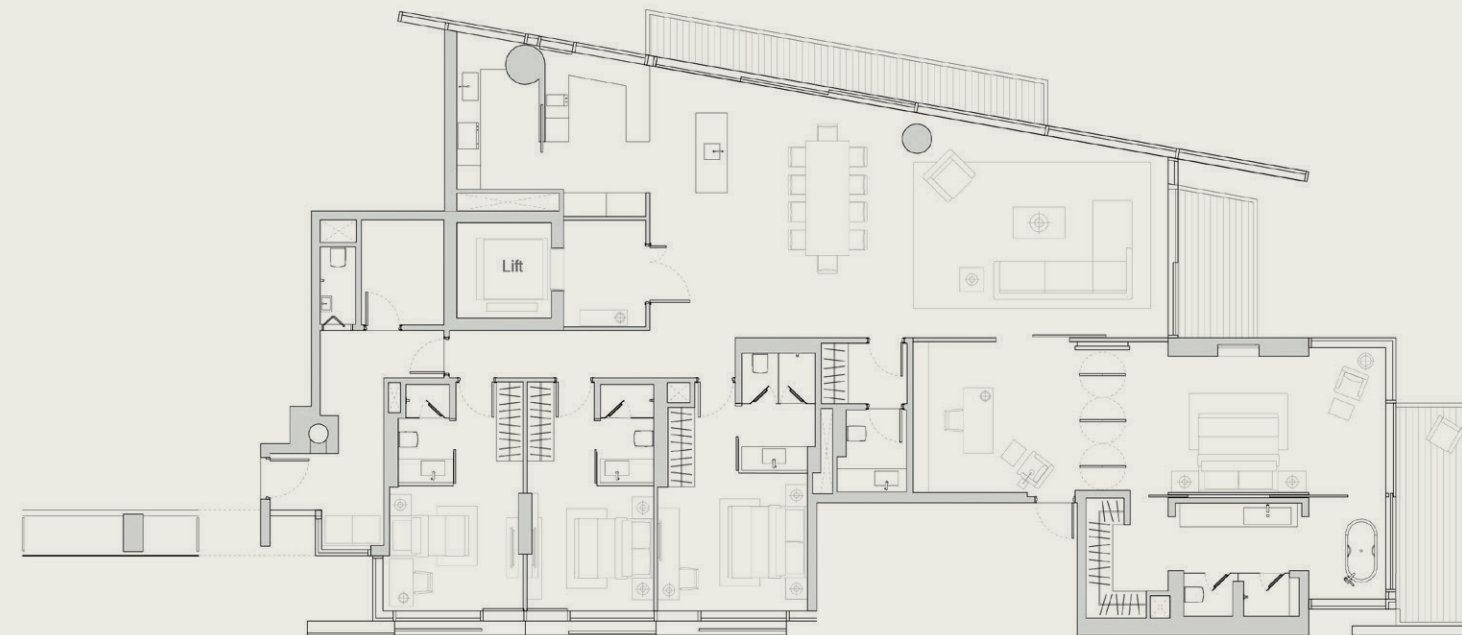
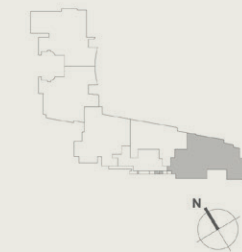
Low wall is built up to the height of approximately 540mm only.

Areas include A/C ledge, balcony, PES and void area. Furnitures shown in the plan are for illustration purpose only.

# TYPE A1

## AZALEA

#04-01 | 317 sm (3413 sf)



### NOTE:

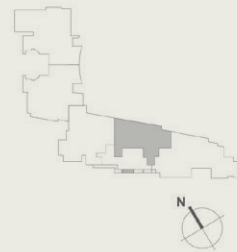
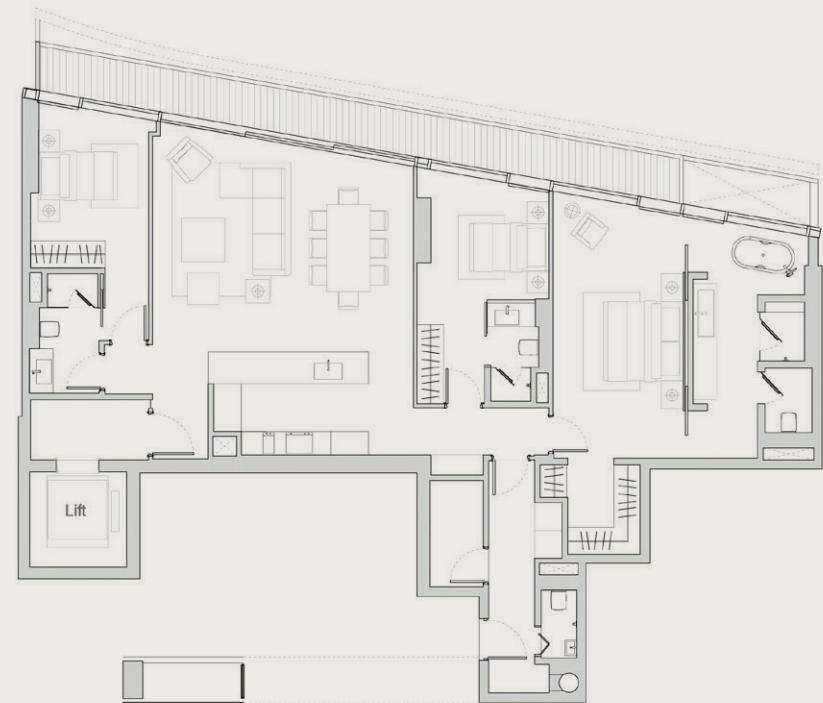
Low wall is built up to the height of approximately 540mm only.

Areas include A/C ledge, balcony, PES and void area. Furnitures shown in the plan are for illustration purpose only.

# TYPE B

## BEGONIA

#05-02 to #10-02 | 197 s m (2120 sf)



### NOTE:

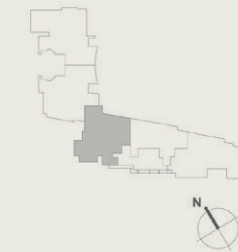
Low wall is built up to the height of approximately 540mm only.

Areas include A/C ledge, balcony, PES and void area. Furnitures shown in the plan are for illustration purpose only.

# TYPE C

## CAMELLIA

#05-03 to #10-03 | 279 sm (3004 sf)



### NOTE:

Low wall is built up to the height of approximately 540mm only.

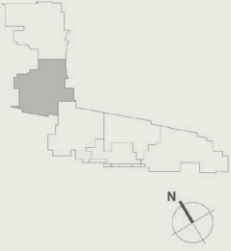
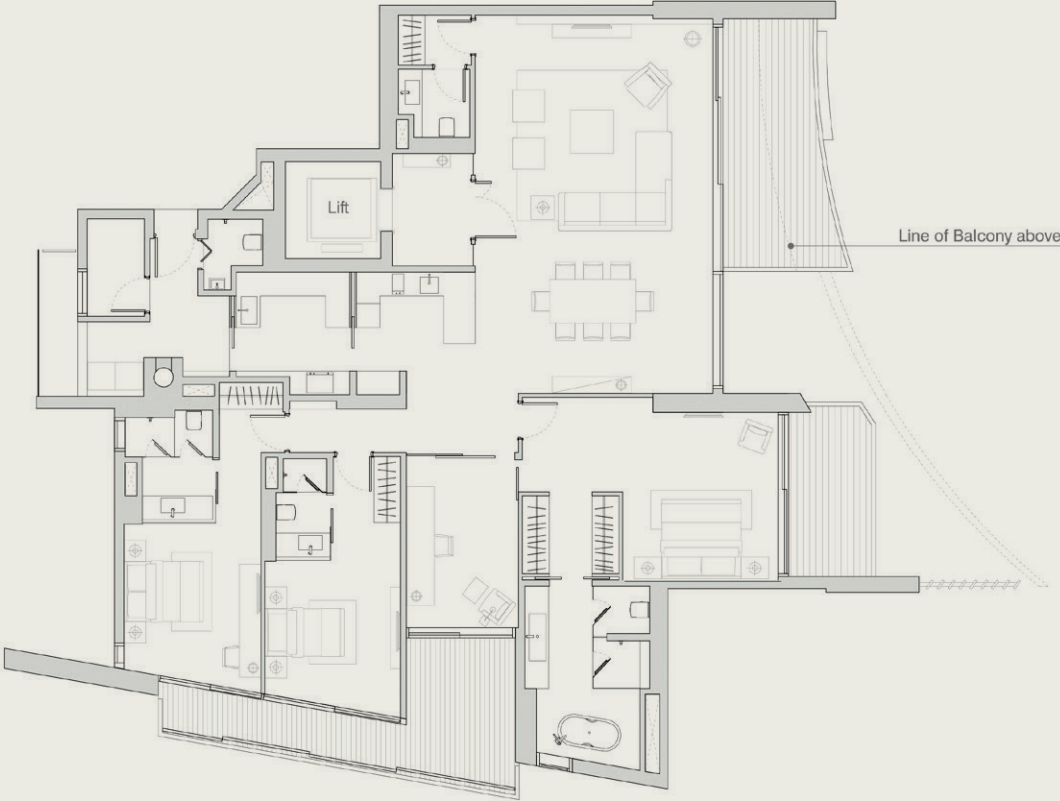
Areas include A/C ledge, balcony, PES and void area. Furnitures shown in the plan are for illustration purpose only.



# TYPE D

## DAFFODIL

#10-04 | 285 sm (3068 sf)



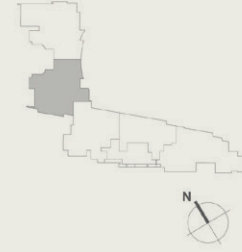
**NOTE:**

Low wall is built up to the height of approximately 540mm only.  
Areas include A/C ledge, balcony, PES and void area. Furnitures shown in the plan are for illustration purpose only.

# TYPE D1A

## DAFFODIL

#05-04 to #09-04 | 285 sm (3068 sf)



### NOTE:

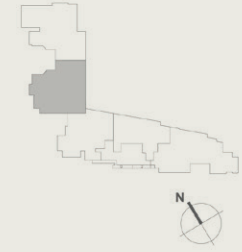
Low wall is built up to the height of approximately 540mm only.

Areas include A/C ledge, balcony, PES and void area. Furnitures shown in the plan are for illustration purpose only.

# TYPE D2

## DAFFODIL

#04-04 | 214 sm (2304 sf)



### NOTE:

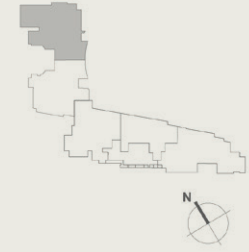
Low wall is built up to the height of approximately 540mm only.

Areas include A/C ledge, balcony, PES and void area. Furnitures shown in the plan are for illustration purpose only.

# TYPE E1

## EDELWEISS

#06-05 to #10-05 | 313 sm (3370 sf)



### NOTE:

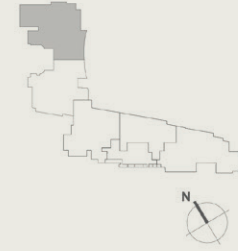
Low wall is built up to the height of approximately 540mm only.

Areas include A/C ledge, balcony, PES and void area. Furnitures shown in the plan are for illustration purpose only.

# TYPE E1A

## EDELWEISS

#05-05 | 316 sm (3402 sf)



### NOTE:

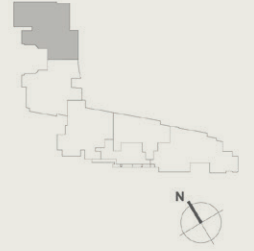
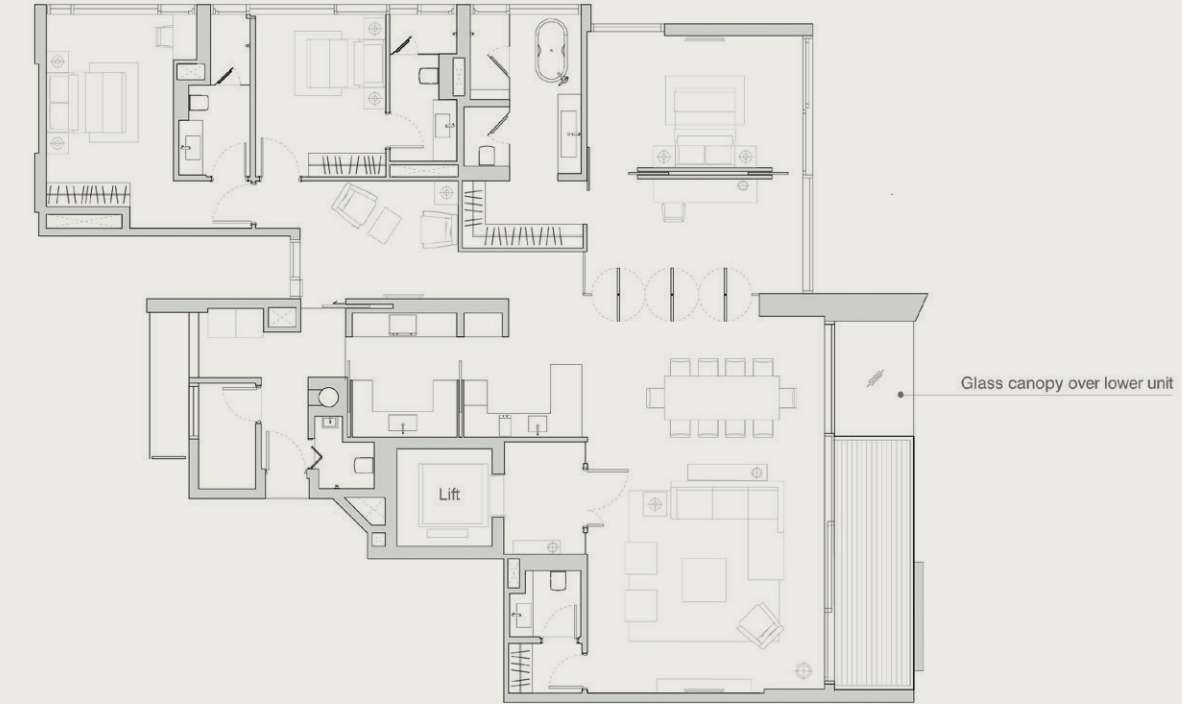
Low wall is built up to the height of approximately 540mm only.

Areas include A/C ledge, balcony, PES and void area. Furnitures shown in the plan are for illustration purpose only.

# TYPE E2

## EDELWEISS

#04-05 | 263 sm (2831 sf)



### NOTE:

Low wall is built up to the height of approximately 540mm only.

Areas include A/C ledge, balcony, PES and void area. Furnitures shown in the plan are for illustration purpose only.