

# 1-BEDROOM

## TYPE A1

45 SQM / 484 SQFT

### BLK 20

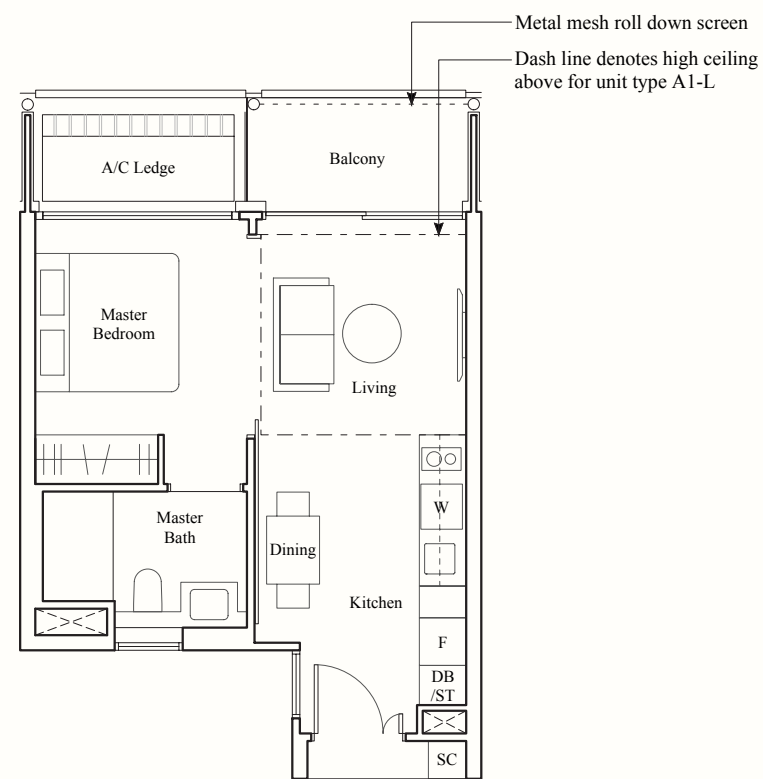
#02-53\* to #05-53\*  
#03-54 to #04-54

## TYPE A1-L

53 SQM / 570 SQFT

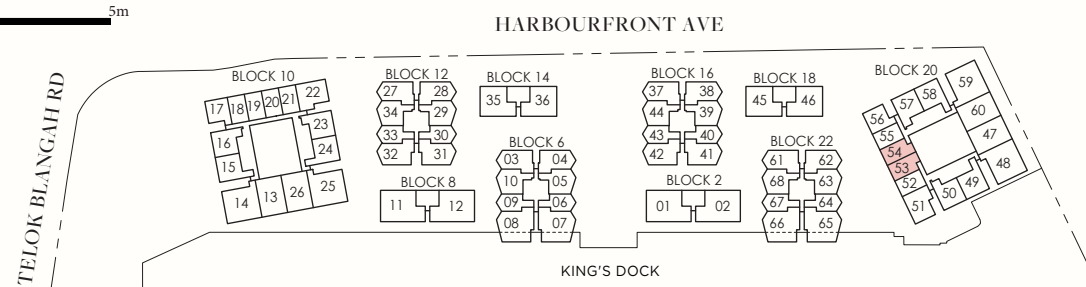
### BLK 20

#05-54



F: Fridge  
W: Washing Machine-cum-Dryer  
DB: Distribution Board  
SC: Shoe Cabinet  
ST: Storage

\* Denotes mirror image



AREA INCLUDES AIR-CON (A/C) LEDGE, BALCONY, PRIVATE ENCLOSED SPACE (PES) AND STRATA VOID AREA WHERE APPLICABLE. SOME UNITS ARE MIRROR IMAGES OF THE PLAN SHOWN IN THE BROCHURE. PLEASE REFER TO THE KEY PLAN FOR ORIENTATION. THE PLANS ARE SUBJECT TO CHANGE AS MAY BE REQUIRED BY THE RELEVANT AUTHORITIES. ALL MEASUREMENTS ARE APPROXIMATE ONLY AND ARE SUBJECT TO GOVERNMENT RE-SURVEY. THE BALCONY SHALL NOT BE ENCLOSED UNLESS WITH THE APPROVED BALCONY SCREEN.

# 1-BEDROOM

## TYPE A1a

45 SQM / 484 SQFT

### BLK 10

#02-18  
#06-18  
#08-18  
#10-18

## TYPE A1b

45 SQM / 484 SQFT

### BLK 10

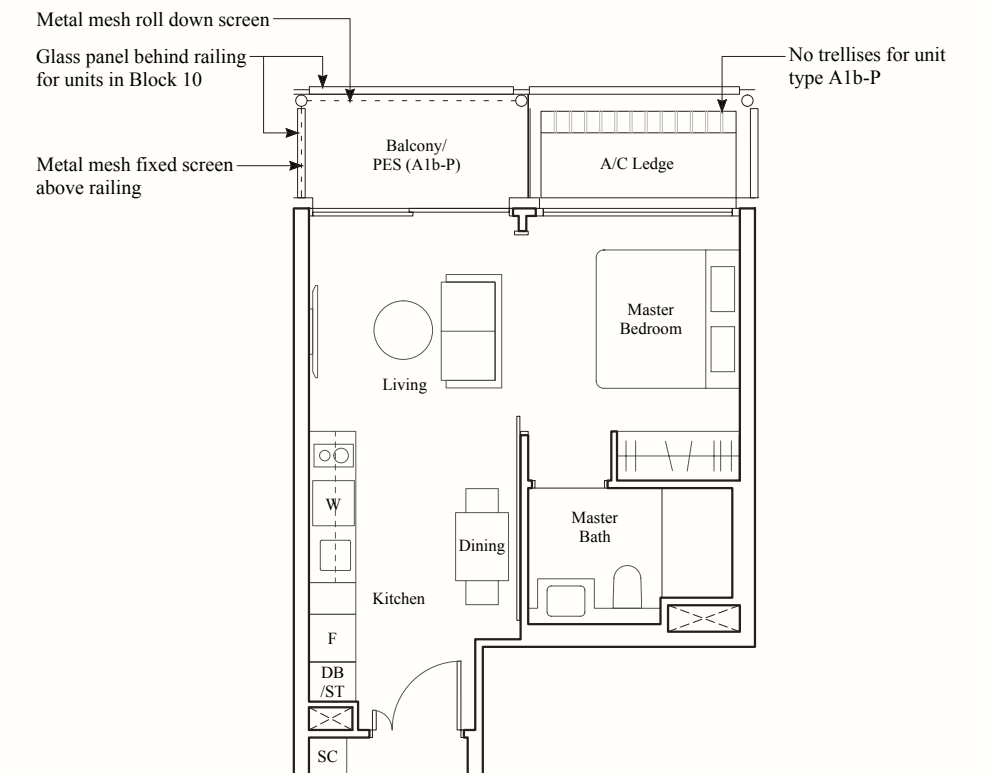
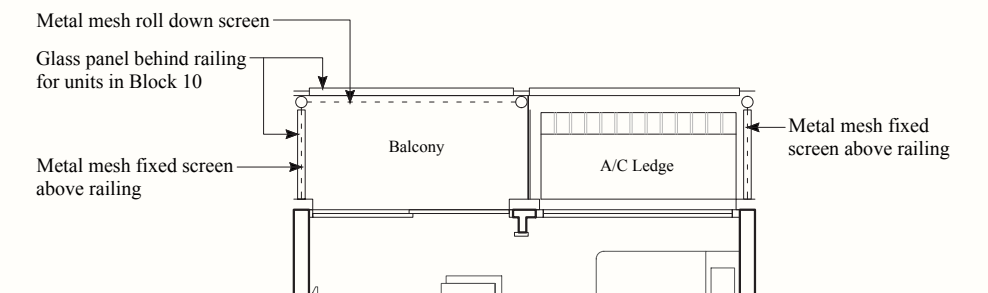
#03-21  
#05-21  
#07-21  
#09-21

## TYPE A1b-P

45 SQM / 484 SQFT

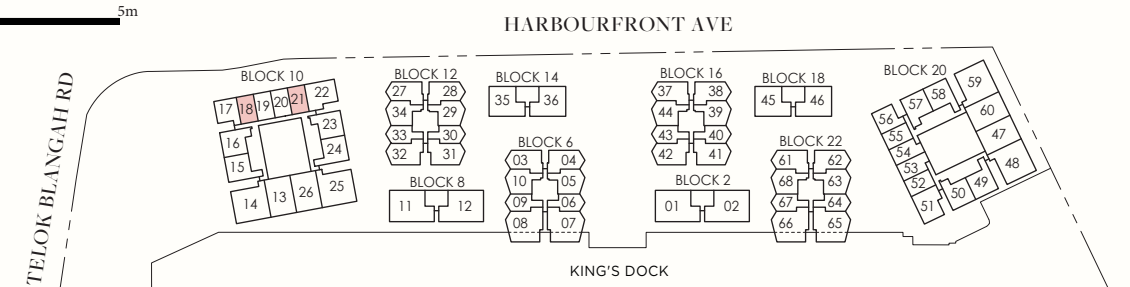
### BLK 10

#01-21



F: Fridge  
W: Washing Machine-cum-Dryer  
DB: Distribution Board  
SC: Shoe Cabinet  
ST: Storage

\* Denotes mirror image



AREA INCLUDES AIR-CON (A/C) LEDGE, BALCONY, PRIVATE ENCLOSED SPACE (PES) AND STRATA VOID AREA WHERE APPLICABLE. SOME UNITS ARE MIRROR IMAGES OF THE PLAN SHOWN IN THE BROCHURE. PLEASE REFER TO THE KEY PLAN FOR ORIENTATION. THE PLANS ARE SUBJECT TO CHANGE AS MAY BE REQUIRED BY THE RELEVANT AUTHORITIES. ALL MEASUREMENTS ARE APPROXIMATE ONLY AND ARE SUBJECT TO GOVERNMENT RE-SURVEY. THE BALCONY SHALL NOT BE ENCLOSED UNLESS WITH THE APPROVED BALCONY SCREEN.

# 1-BEDROOM

## TYPE A1c

45 SQM / 484 SQFT

### BLK 10

#02-20 #08-20  
#04-20 #10-20  
#06-20

## TYPE A1d

45 SQM / 484 SQFT

### BLK 20

#02-52 to #05-52

## TYPE A1d-P

45 SQM / 484 SQFT

### BLK 20

#01-52

## TYPE A1e

45 SQM / 484 SQFT

### BLK 10

#07-19\* #03-55  
#09-19\* #04-55

## TYPE A1e-P

45 SQM / 484 SQFT

### BLK 10

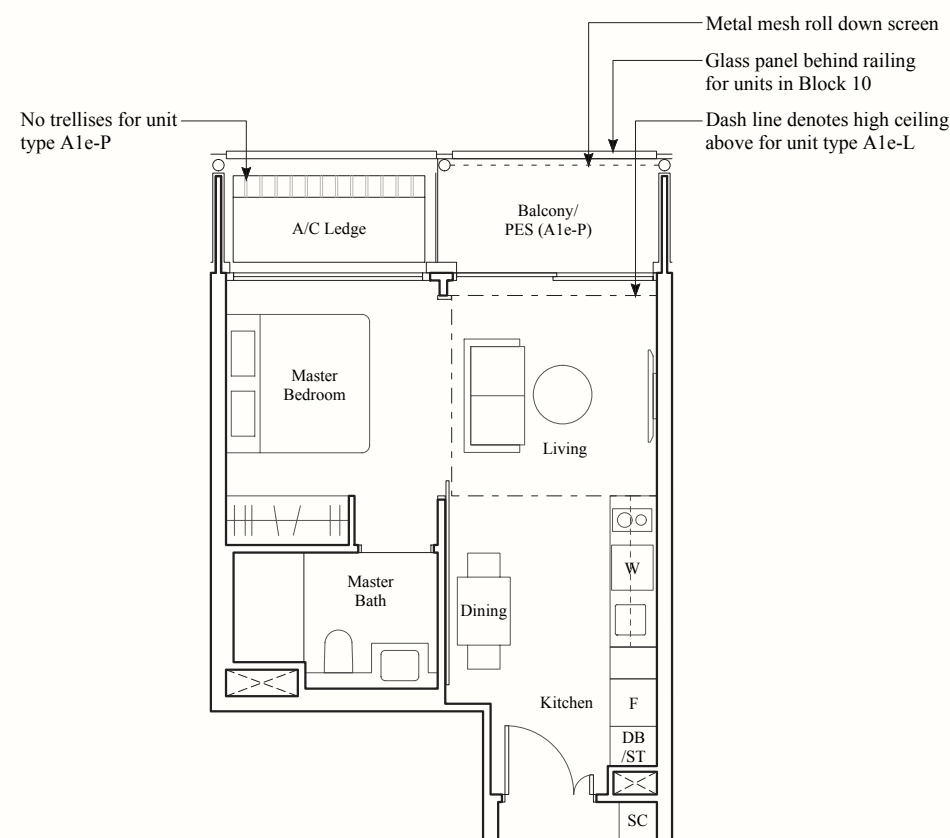
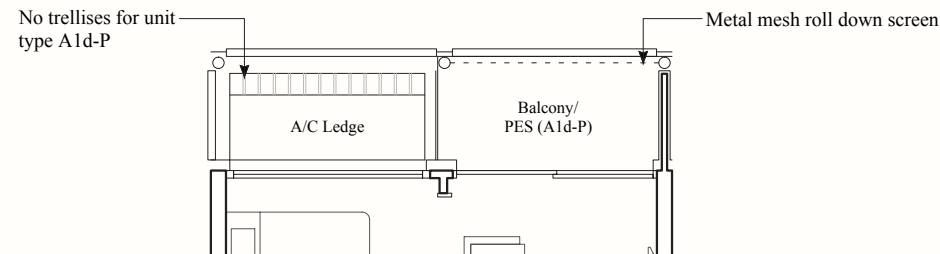
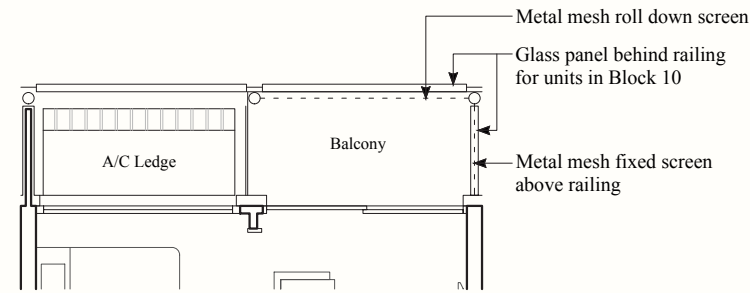
#01-19\* #01-53\*

## TYPE A1e-L

53 SQM / 570 SQFT

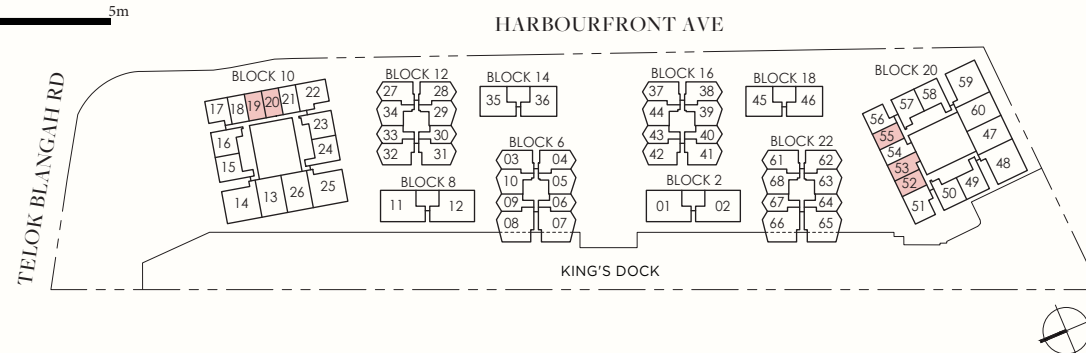
### BLK 20

#05-55



F: Fridge  
W: Washing Machine-cum-Dryer  
DB: Distribution Board  
SC: Shoe Cabinet  
ST: Storage

\* Denotes mirror image



AREA INCLUDES AIR-CON (A/C) LEDGE, BALCONY, PRIVATE ENCLOSED SPACE (PES) AND STRATA VOID AREA WHERE APPLICABLE. SOME UNITS ARE MIRROR IMAGES OF THE PLAN SHOWN IN THE BROCHURE. PLEASE REFER TO THE KEY PLAN FOR ORIENTATION. THE PLANS ARE SUBJECT TO CHANGE AS MAY BE REQUIRED BY THE RELEVANT AUTHORITIES. ALL MEASUREMENTS ARE APPROXIMATE ONLY AND ARE SUBJECT TO GOVERNMENT RE-SURVEY. THE BALCONY SHALL NOT BE ENCLOSED UNLESS WITH THE APPROVED BALCONY SCREEN.

# 1-BEDROOM

## TYPE A1f

45 SQM / 484 SQFT

### BLK 10

#07-17 #03-56\*  
#09-17 #04-56\*

## TYPE A1f-P

45 SQM / 484 SQFT

### BLK 10

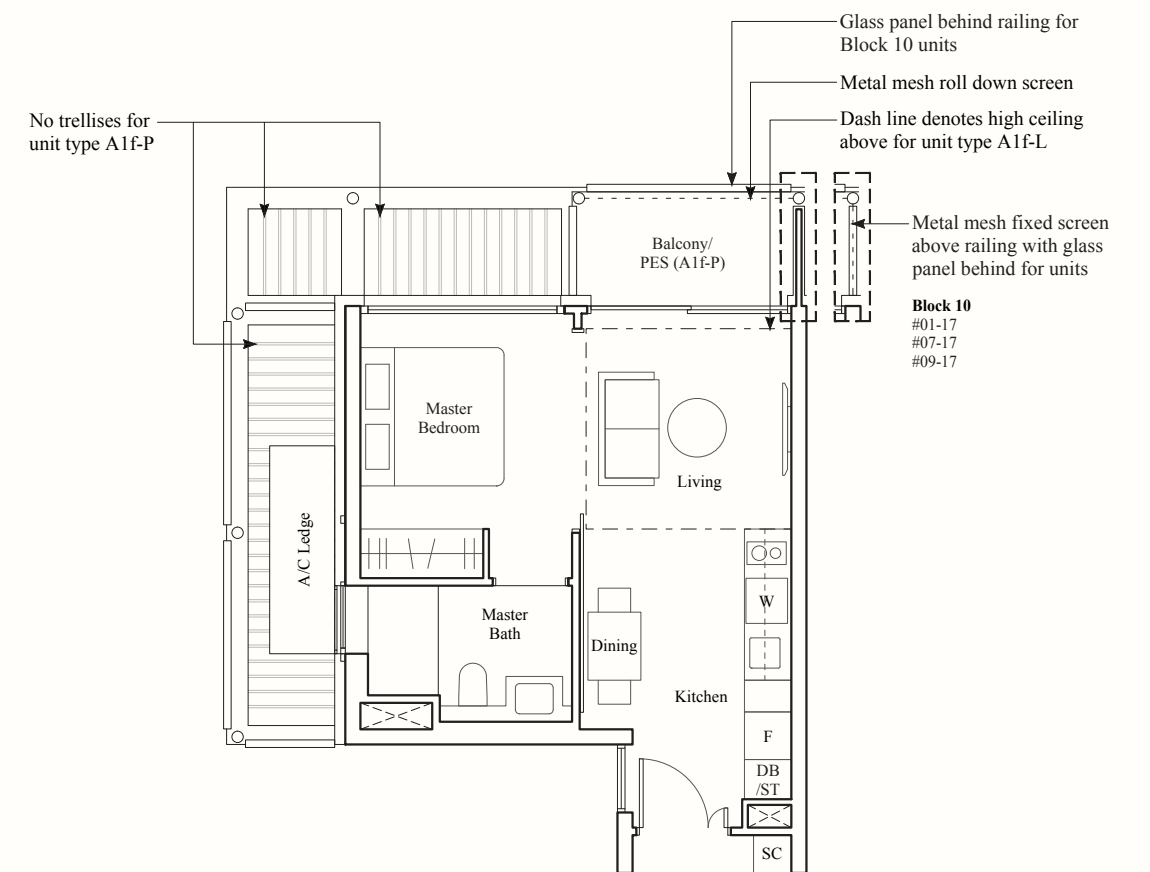
#01-17

## TYPE A1f-L

53 SQM / 570 SQFT

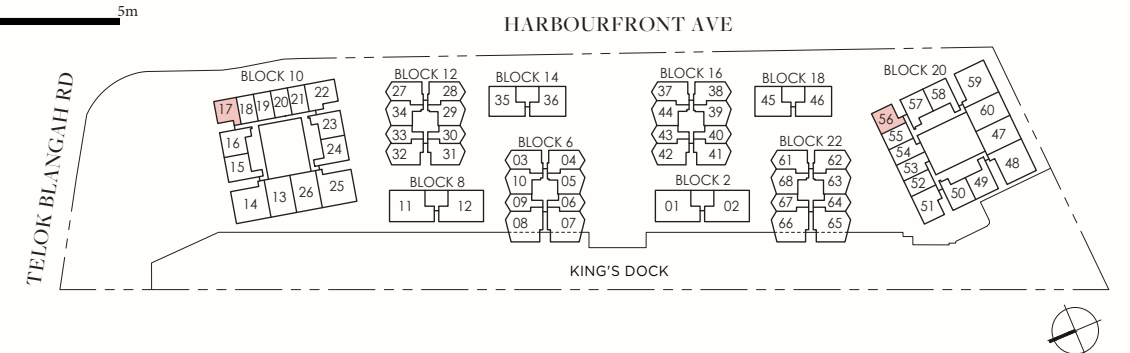
### BLK 20

#05-56\*



F: Fridge  
W: Washing Machine-cum-Dryer  
DB: Distribution Board  
SC: Shoe Cabinet  
ST: Storage

\* Denotes mirror image

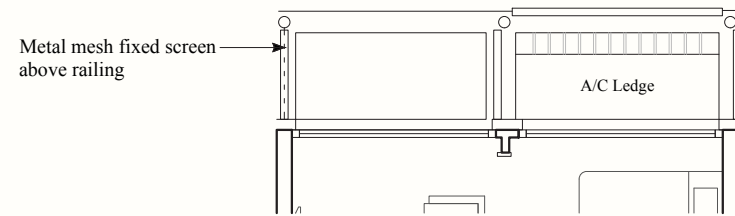


AREA INCLUDES AIR-CON (A/C) LEDGE, BALCONY, PRIVATE ENCLOSED SPACE (PES) AND STRATA VOID AREA WHERE APPLICABLE. SOME UNITS ARE MIRROR IMAGES OF THE PLAN SHOWN IN THE BROCHURE. PLEASE REFER TO THE KEY PLAN FOR ORIENTATION. THE PLANS ARE SUBJECT TO CHANGE AS MAY BE REQUIRED BY THE RELEVANT AUTHORITIES. ALL MEASUREMENTS ARE APPROXIMATE ONLY AND ARE SUBJECT TO GOVERNMENT RE-SURVEY. THE BALCONY SHALL NOT BE ENCLOSED UNLESS WITH THE APPROVED BALCONY SCREEN.

# 1-BEDROOM

## TYPE A1g 40 SQM / 431 SQFT

**BLK 10**  
#02-21  
#04-21  
#06-21  
#08-21  
#10-21

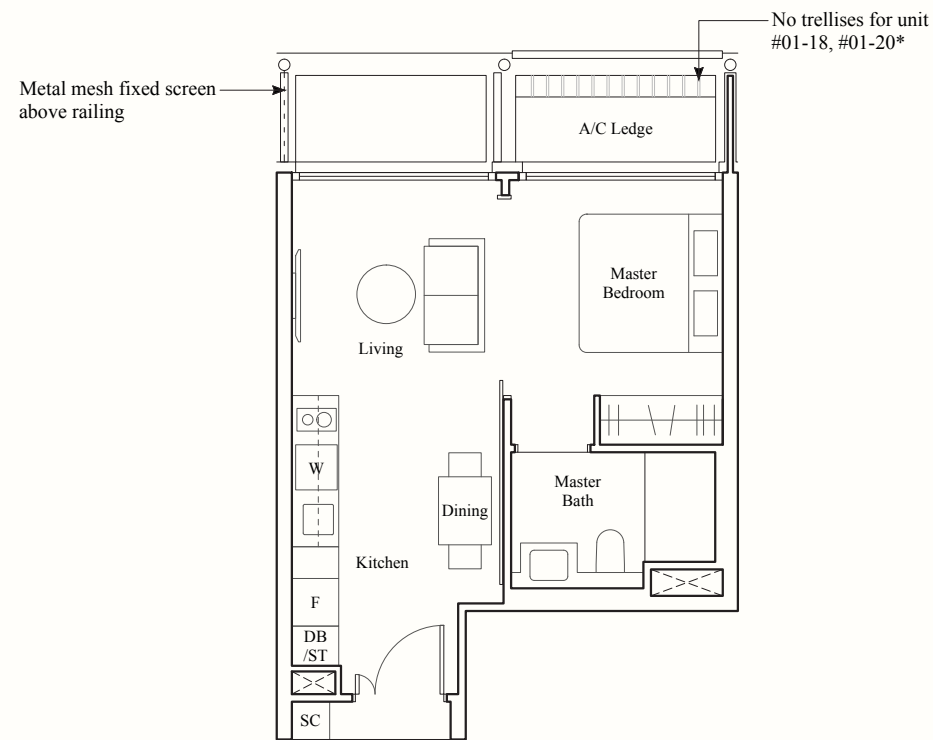


## TYPE A1h 40 SQM / 431 SQFT

**BLK 10**  
#01-18  
#07-18  
#09-18

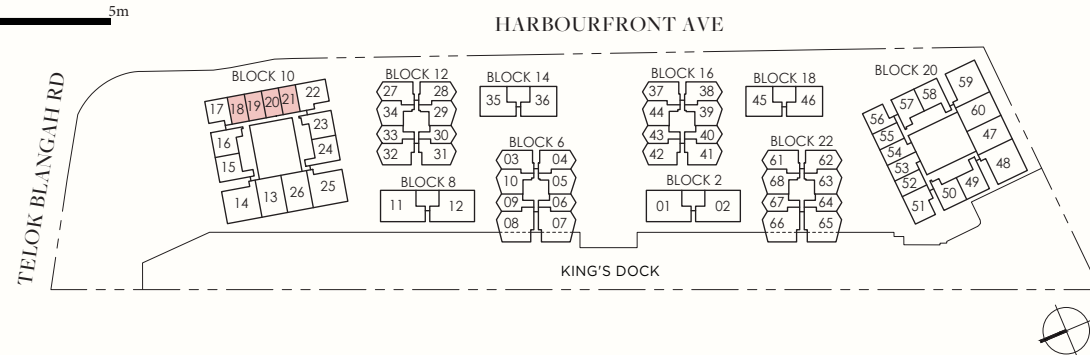
#02-19  
#06-19  
#08-19  
#10-19

#01-20\*  
#03-20\*  
#05-20\*  
#07-20\*  
#09-20\*



F: Fridge  
W: Washing Machine-cum-Dryer  
DB: Distribution Board  
SC: Shoe Cabinet  
ST: Storage

\* Denotes mirror image

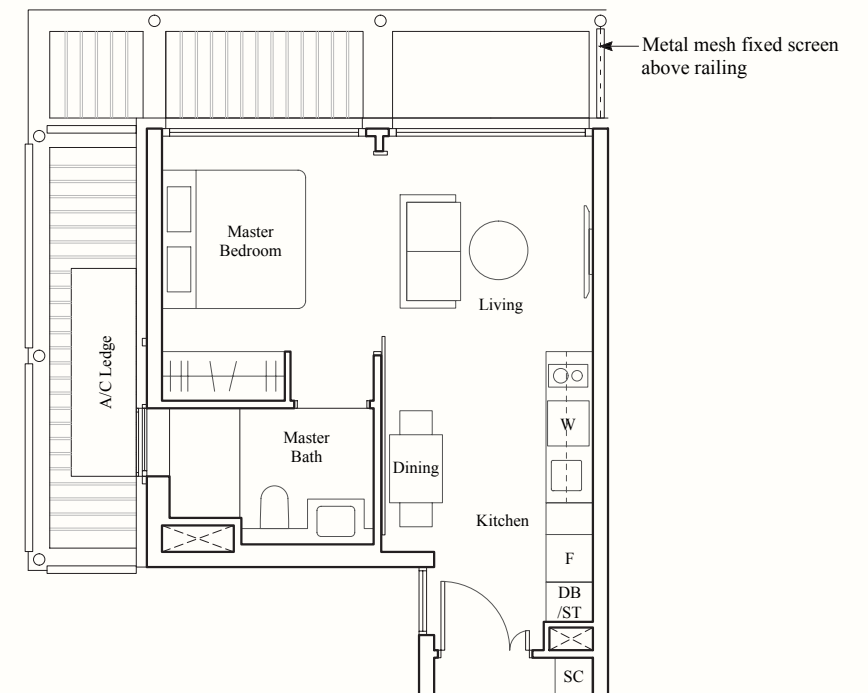


AREA INCLUDES AIR-CON (A/C) LEDGE, BALCONY, PRIVATE ENCLOSED SPACE (PES) AND STRATA VOID AREA WHERE APPLICABLE. SOME UNITS ARE MIRROR IMAGES OF THE PLAN SHOWN IN THE BROCHURE. PLEASE REFER TO THE KEY PLAN FOR ORIENTATION. THE PLANS ARE SUBJECT TO CHANGE AS MAY BE REQUIRED BY THE RELEVANT AUTHORITIES. ALL MEASUREMENTS ARE APPROXIMATE ONLY AND ARE SUBJECT TO GOVERNMENT RE-SURVEY. THE BALCONY SHALL NOT BE ENCLOSED UNLESS WITH THE APPROVED BALCONY SCREEN.

# 1-BEDROOM

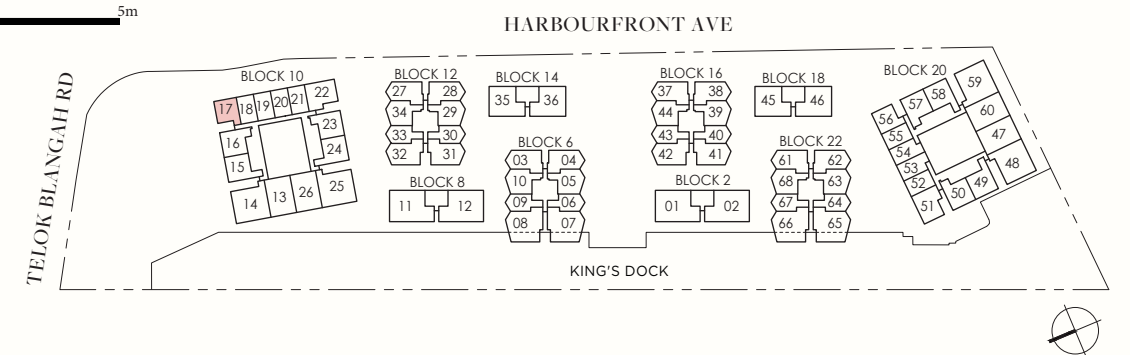
## TYPE A1j 40 SQM / 431 SQFT

**BLK 10**  
#02-17  
#06-17  
#08-17  
#10-17



F: Fridge  
W: Washing Machine-cum-Dryer  
DB: Distribution Board  
SC: Shoe Cabinet  
ST: Storage

\* Denotes mirror image



AREA INCLUDES AIR-CON (A/C) LEDGE, BALCONY, PRIVATE ENCLOSED SPACE (PES) AND STRATA VOID AREA WHERE APPLICABLE. SOME UNITS ARE MIRROR IMAGES OF THE PLAN SHOWN IN THE BROCHURE. PLEASE REFER TO THE KEY PLAN FOR ORIENTATION. THE PLANS ARE SUBJECT TO CHANGE AS MAY BE REQUIRED BY THE RELEVANT AUTHORITIES. ALL MEASUREMENTS ARE APPROXIMATE ONLY AND ARE SUBJECT TO GOVERNMENT RE-SURVEY. THE BALCONY SHALL NOT BE ENCLOSED UNLESS WITH THE APPROVED BALCONY SCREEN.

# 1-BEDROOM

## TYPE A2

50 SQM / 538 SQFT

### BLK 6

#03-06 to #08-06  
#03-09\* to #08-09\*

### BLK 12

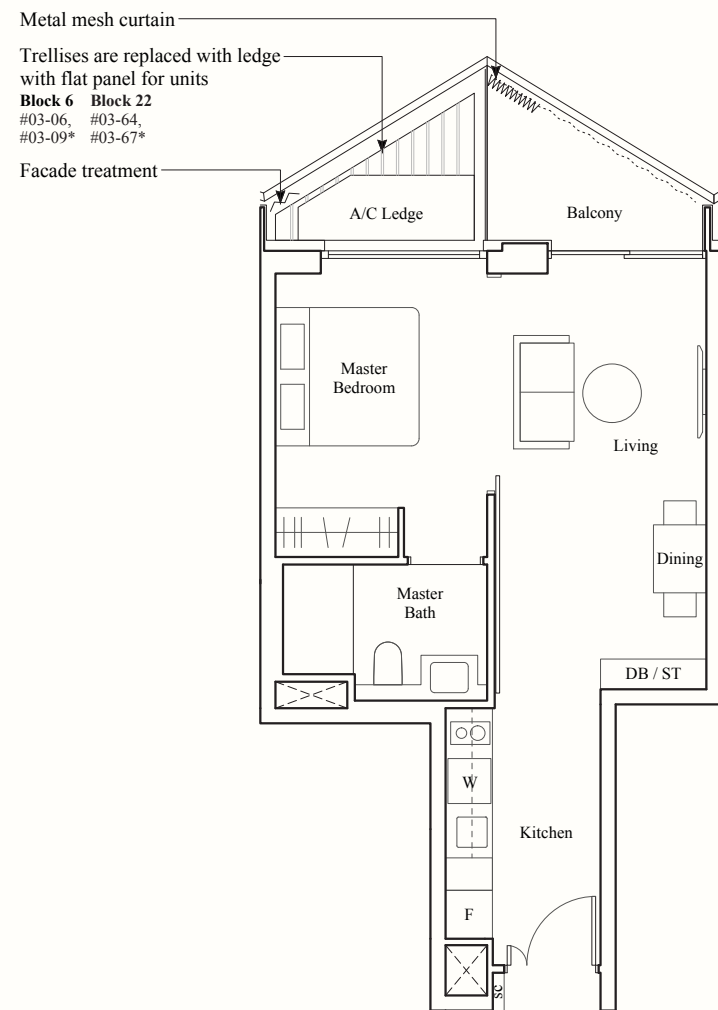
#04-30 to #08-30  
#04-33\* to #08-33\*

### BLK 16

#04-40 to #08-40  
#04-43\* to #08-43\*

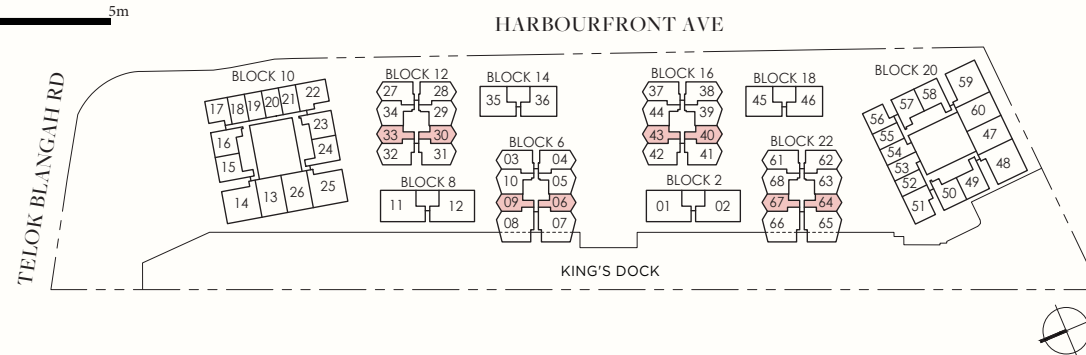
### BLK 22

#03-64 to #07-64  
#03-67\* to #07-67\*



F: Fridge  
W: Washing Machine-cum-Dryer  
DB: Distribution Board  
SC: Shoe Cabinet  
ST: Storage

\* Denotes mirror image



AREA INCLUDES AIR-CON (A/C) LEDGE, BALCONY, PRIVATE ENCLOSED SPACE (PES) AND STRATA VOID AREA WHERE APPLICABLE. SOME UNITS ARE MIRROR IMAGES OF THE PLAN SHOWN IN THE BROCHURE. PLEASE REFER TO THE KEY PLAN FOR ORIENTATION. THE PLANS ARE SUBJECT TO CHANGE AS MAY BE REQUIRED BY THE RELEVANT AUTHORITIES. ALL MEASUREMENTS ARE APPROXIMATE ONLY AND ARE SUBJECT TO GOVERNMENT RE-SURVEY. THE BALCONY SHALL NOT BE ENCLOSED UNLESS WITH THE APPROVED BALCONY SCREEN.

# 1-BEDROOM

## TYPE A3

55 SQM / 592 SQFT

### BLK 12

#02-30 to #03-30  
#02-33\* to #03-33\*

### BLK 16

#02-40 to #03-40  
#02-43\* to #03-43\*

## TYPE A3-P

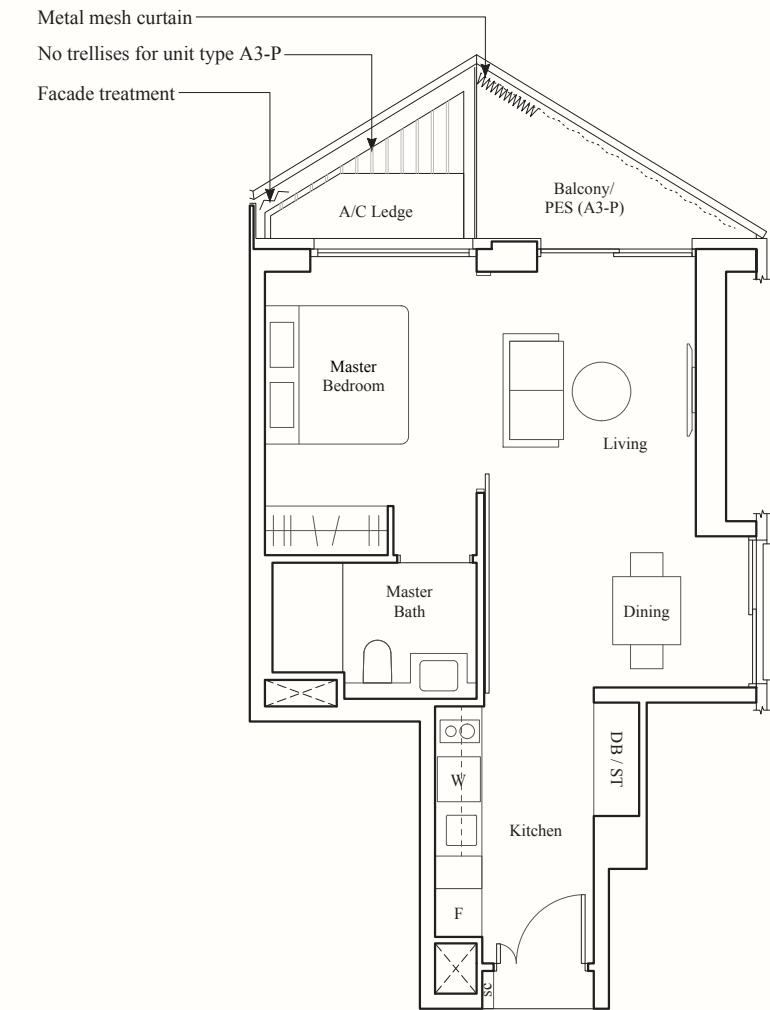
55 SQM / 592 SQFT

### BLK 12

#01-30

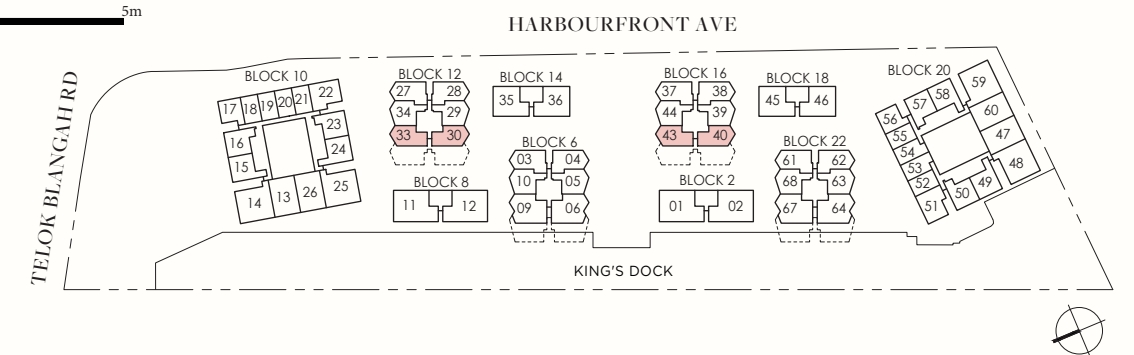
### BLK 16

#01-40



F: Fridge  
W: Washing Machine-cum-Dryer  
DB: Distribution Board  
SC: Shoe Cabinet  
ST: Storage

\* Denotes mirror image



AREA INCLUDES AIR-CON (A/C) LEDGE, BALCONY, PRIVATE ENCLOSED SPACE (PES) AND STRATA VOID AREA WHERE APPLICABLE. SOME UNITS ARE MIRROR IMAGES OF THE PLAN SHOWN IN THE BROCHURE. PLEASE REFER TO THE KEY PLAN FOR ORIENTATION. THE PLANS ARE SUBJECT TO CHANGE AS MAY BE REQUIRED BY THE RELEVANT AUTHORITIES. ALL MEASUREMENTS ARE APPROXIMATE ONLY AND ARE SUBJECT TO GOVERNMENT RE-SURVEY. THE BALCONY SHALL NOT BE ENCLOSED UNLESS WITH THE APPROVED BALCONY SCREEN.

# 1-BEDROOM

## TYPE A4-P

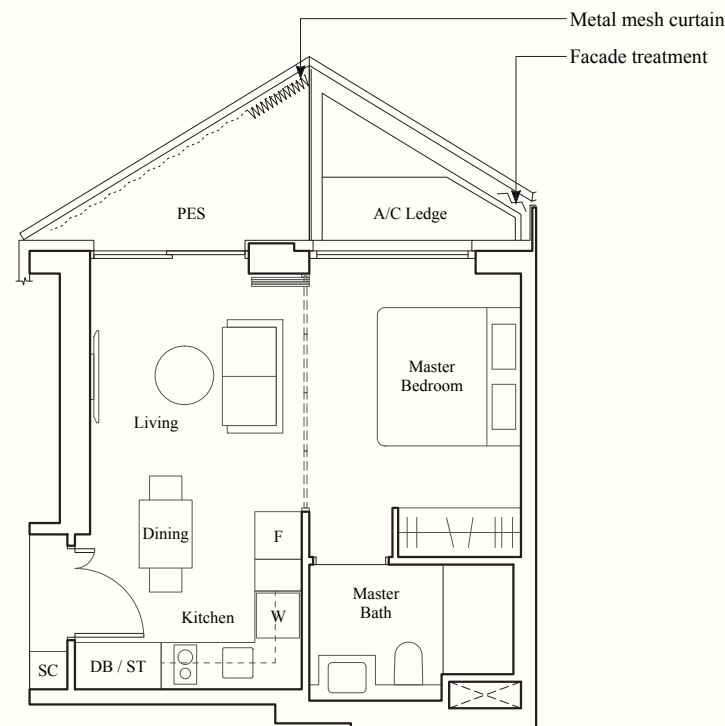
45 SQM / 484 SQFT

### BLK 12

#01-33

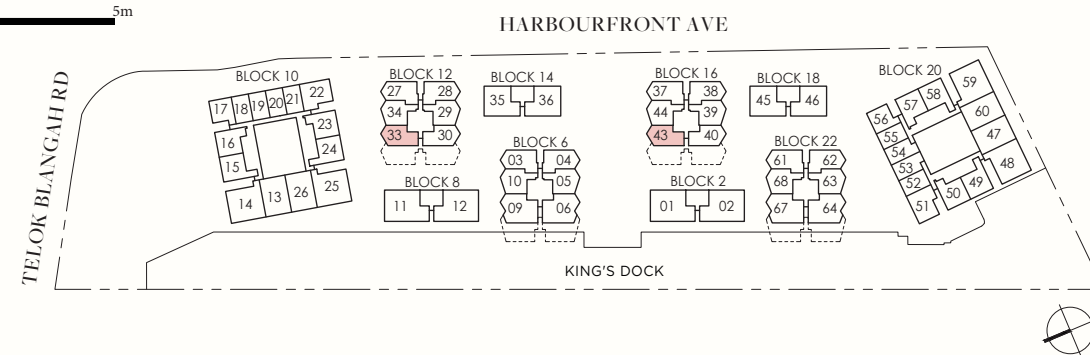
### BLK 16

#01-43



F: Fridge  
W: Washing Machine-cum-Dryer  
DB: Distribution Board  
SC: Shoe Cabinet  
ST: Storage

\* Denotes mirror image



AREA INCLUDES AIR-CON (A/C) LEDGE, BALCONY, PRIVATE ENCLOSED SPACE (PES) AND STRATA VOID AREA WHERE APPLICABLE. SOME UNITS ARE MIRROR IMAGES OF THE PLAN SHOWN IN THE BROCHURE. PLEASE REFER TO THE KEY PLAN FOR ORIENTATION. THE PLANS ARE SUBJECT TO CHANGE AS MAY BE REQUIRED BY THE RELEVANT AUTHORITIES. ALL MEASUREMENTS ARE APPROXIMATE ONLY AND ARE SUBJECT TO GOVERNMENT RE-SURVEY. THE BALCONY SHALL NOT BE ENCLOSED UNLESS WITH THE APPROVED BALCONY SCREEN.

# 1-BEDROOM + STUDY

## TYPE AS1-P

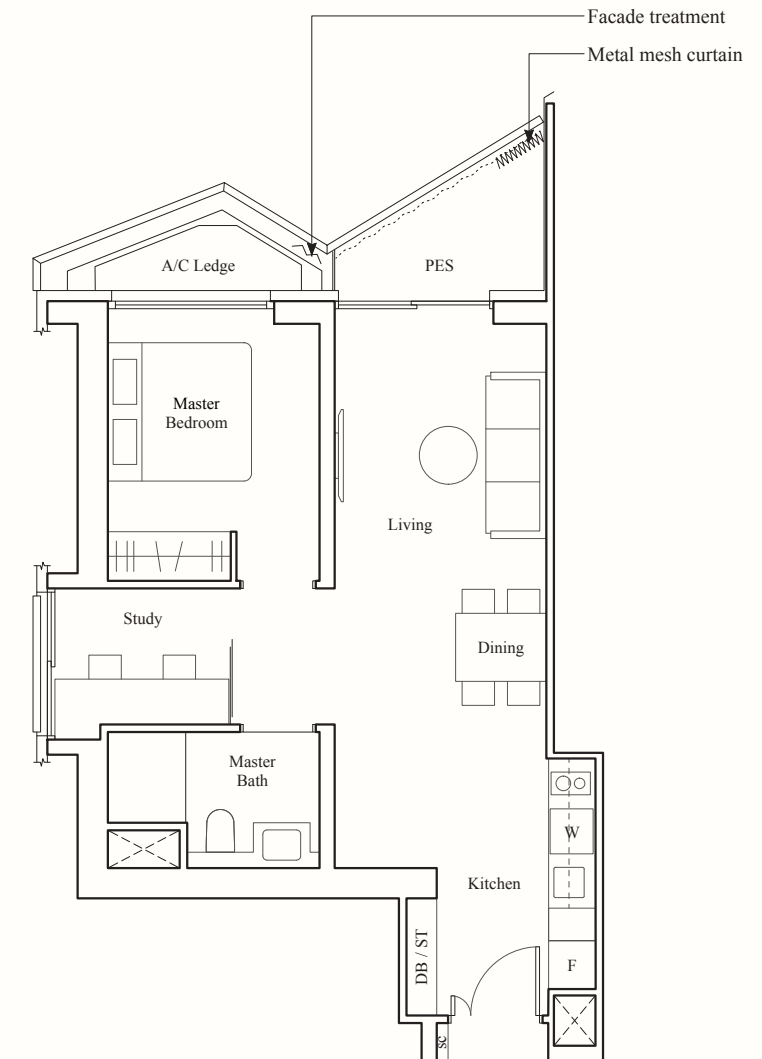
61 SQM / 657 SQFT

### BLK 6

#01-09

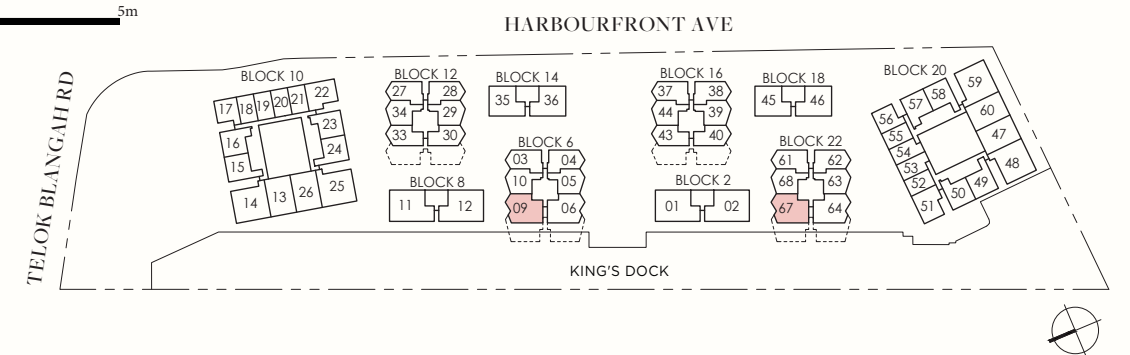
### BLK 22

#01-67



F: Fridge  
W: Washing Machine-cum-Dryer  
DB: Distribution Board  
SC: Shoe Cabinet  
ST: Storage

\* Denotes mirror image



AREA INCLUDES AIR-CON (A/C) LEDGE, BALCONY, PRIVATE ENCLOSED SPACE (PES) AND STRATA VOID AREA WHERE APPLICABLE. SOME UNITS ARE MIRROR IMAGES OF THE PLAN SHOWN IN THE BROCHURE. PLEASE REFER TO THE KEY PLAN FOR ORIENTATION. THE PLANS ARE SUBJECT TO CHANGE AS MAY BE REQUIRED BY THE RELEVANT AUTHORITIES. ALL MEASUREMENTS ARE APPROXIMATE ONLY AND ARE SUBJECT TO GOVERNMENT RE-SURVEY. THE BALCONY SHALL NOT BE ENCLOSED UNLESS WITH THE APPROVED BALCONY SCREEN.