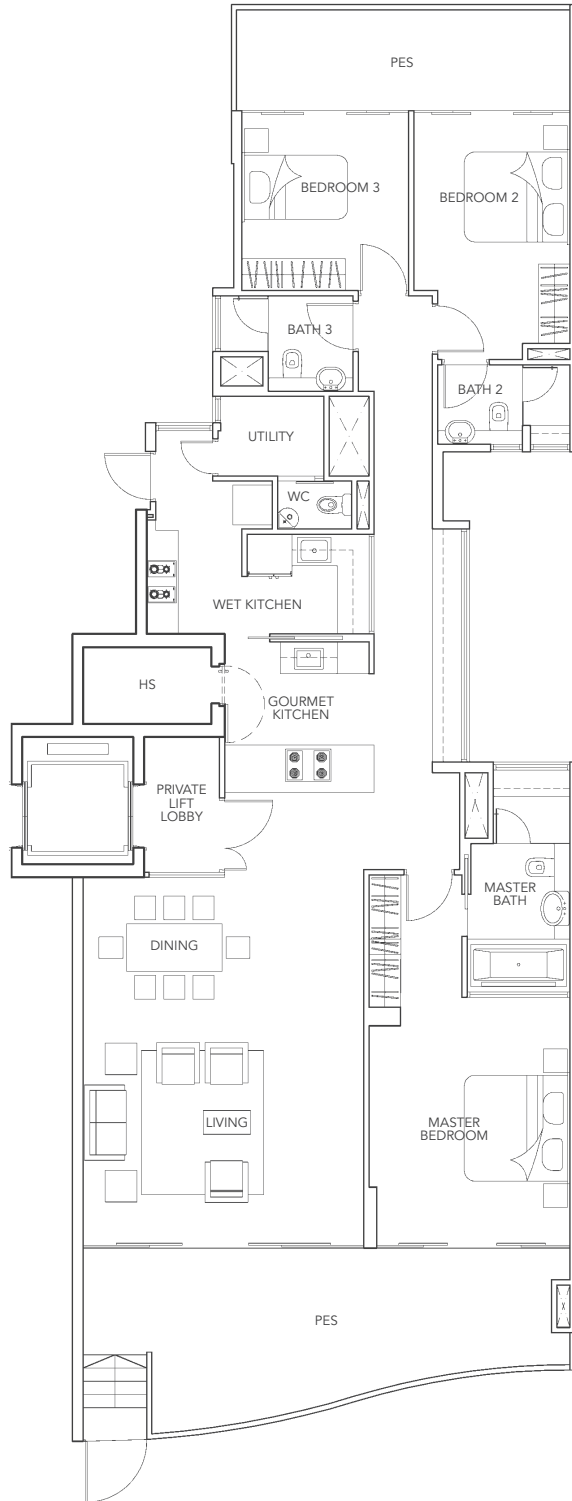
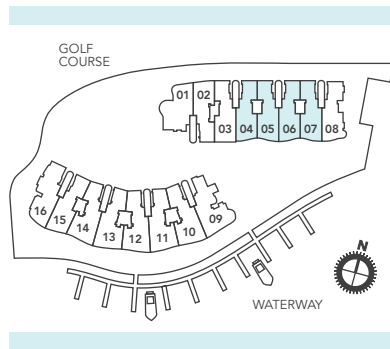


THREE-BEDROOM

Type A1-g

201 sq.m. / 2,164 sq.ft.

Including PES of 40 sq.m.
51 Cove Drive, #01-04 to #01-07

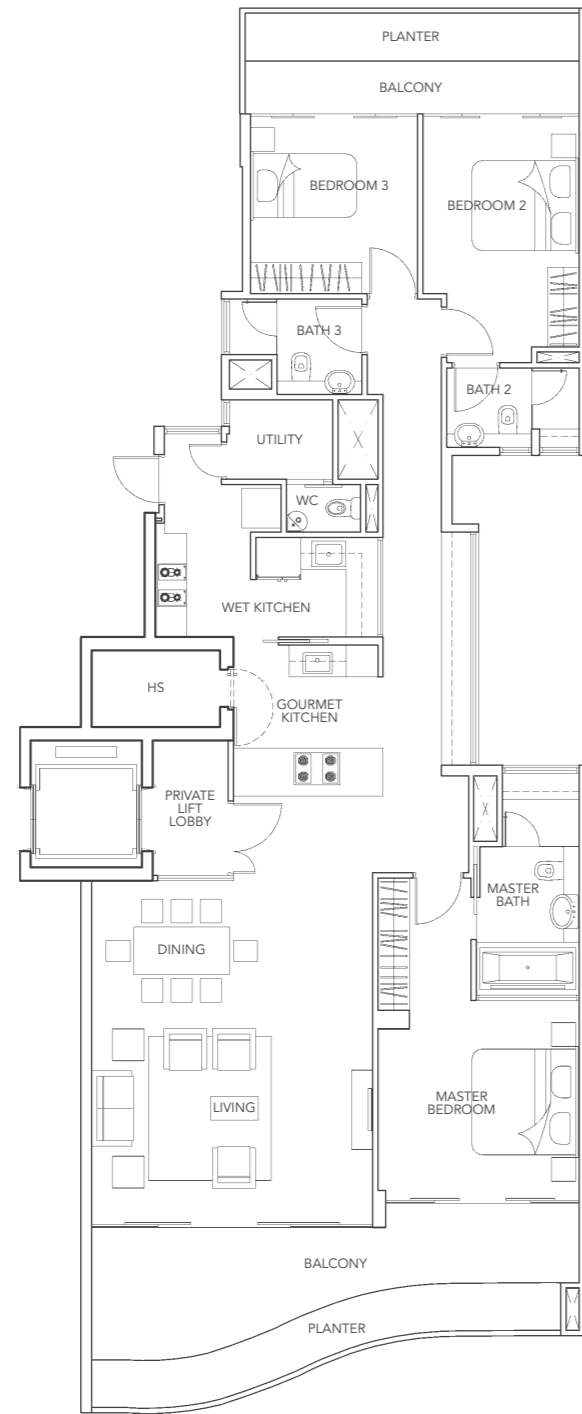
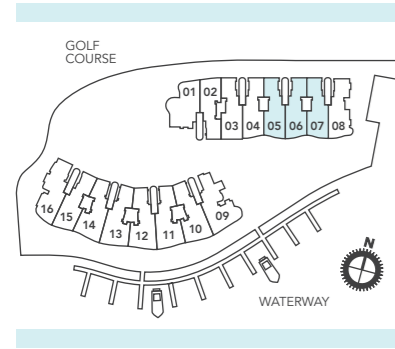


THREE-BEDROOM

Type A1

194 sq.m. / 2,088 sq.ft.

51 Cove Drive, #02-05 to #02-07, #03-05 to #03-07, #04-05 to #04-07, #05-05 to #05-07

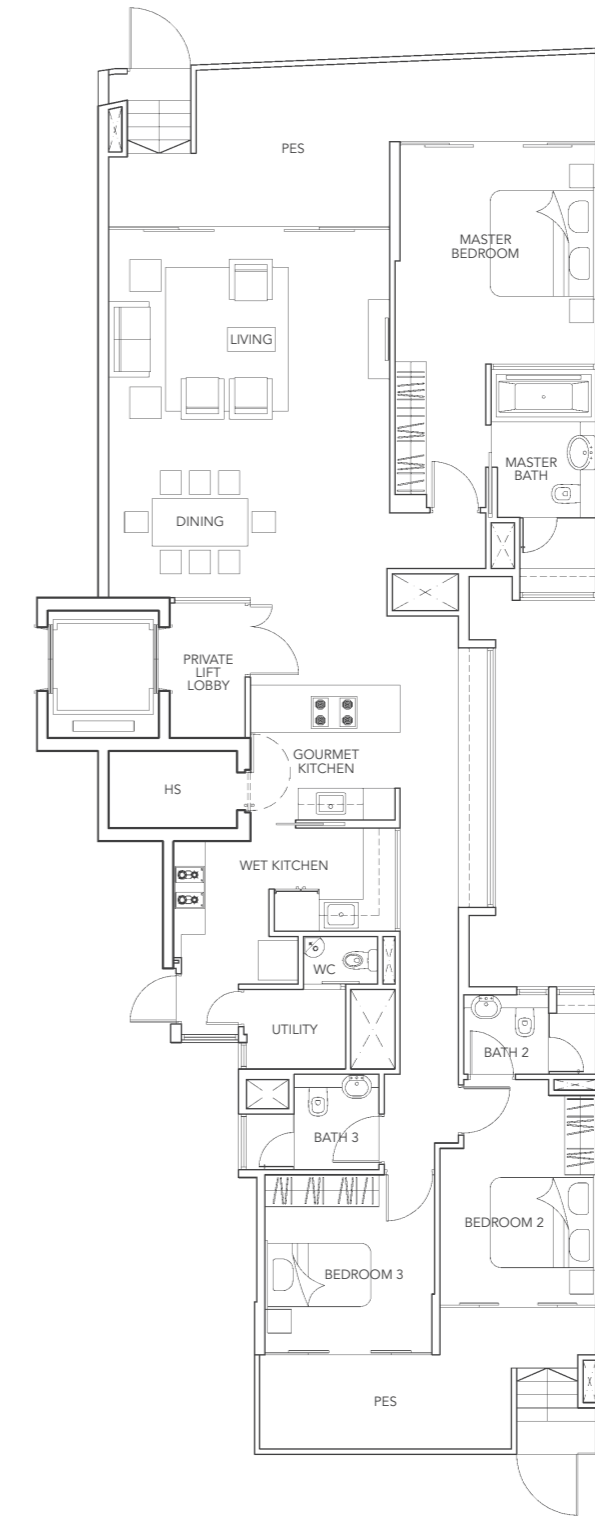
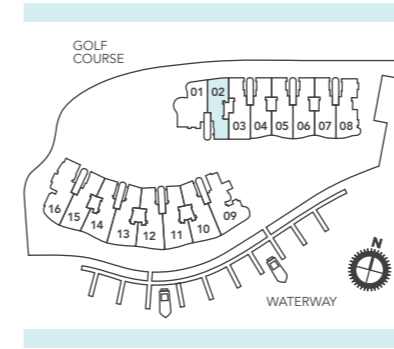


THREE-BEDROOM

Type A1a-g

196 sq.m. / 2,110 sq.ft.

Including PES of 38 sq.m.
51 Cove Drive, #01-02

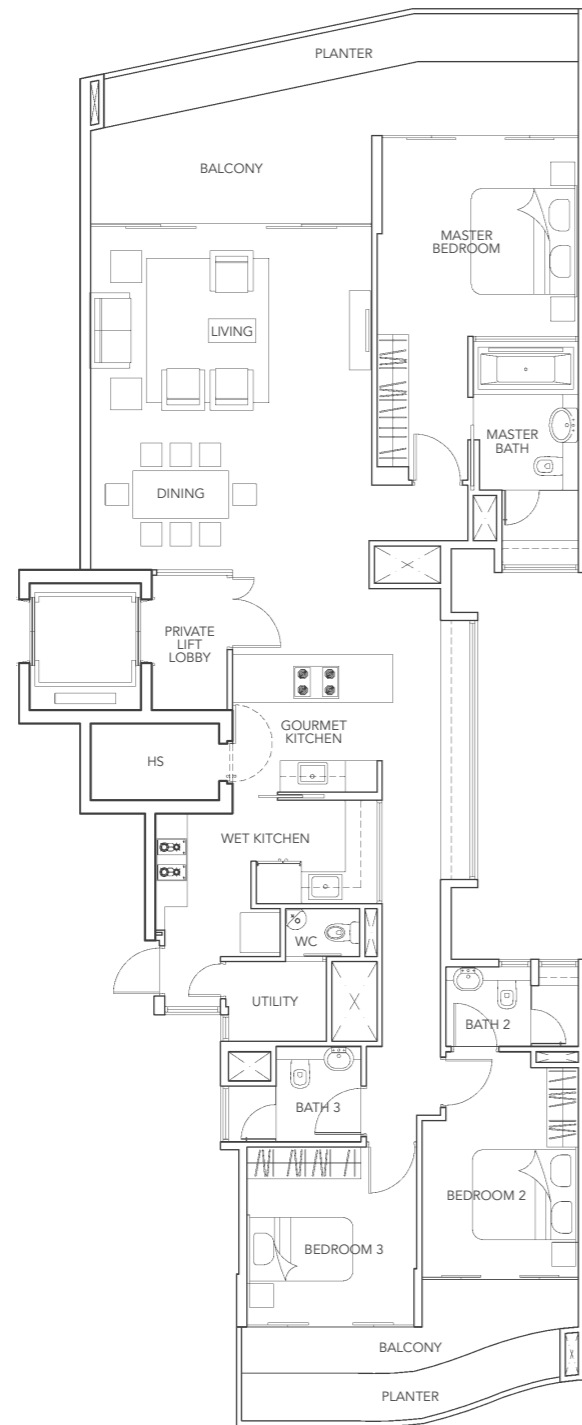
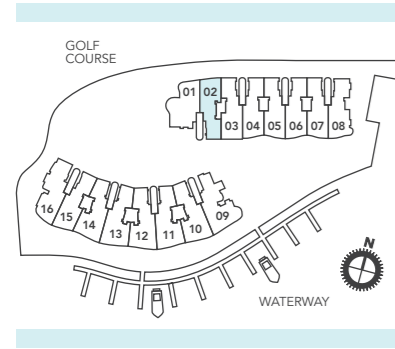


THREE-BEDROOM

Type A1a

194 sq.m. / 2,088 sq.ft.

51 Cove Drive, #02-02 to #05-02

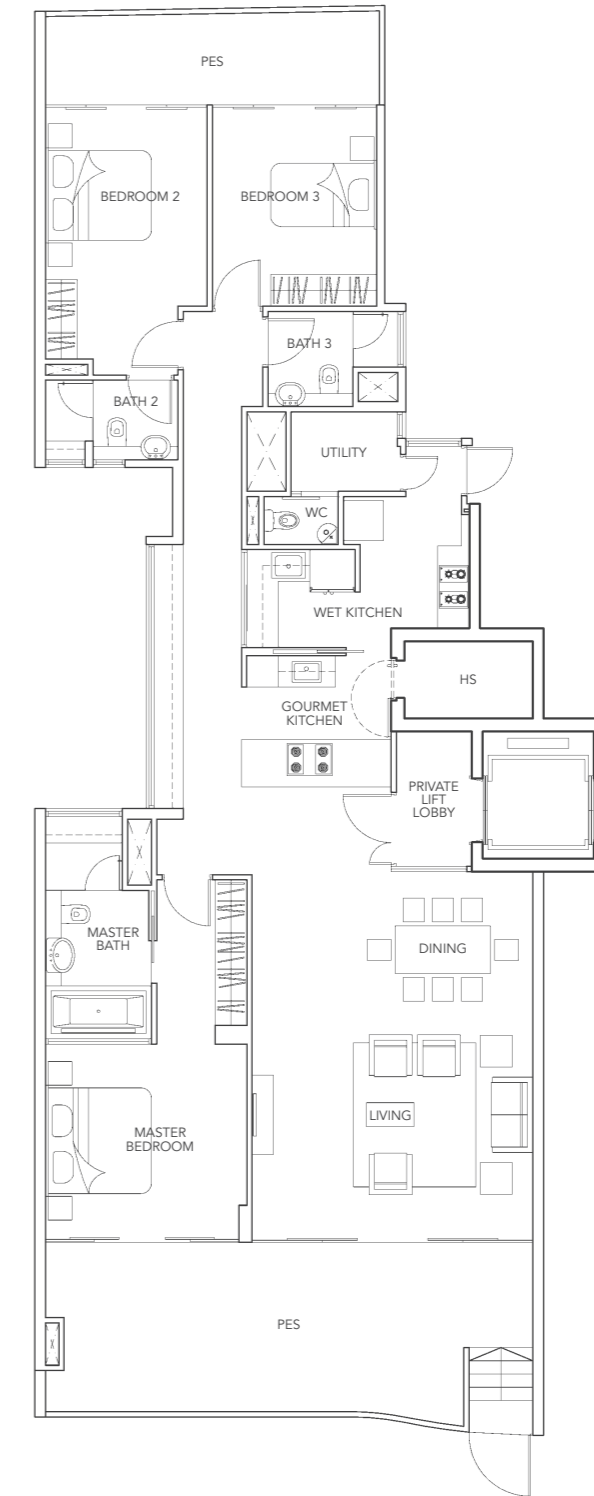
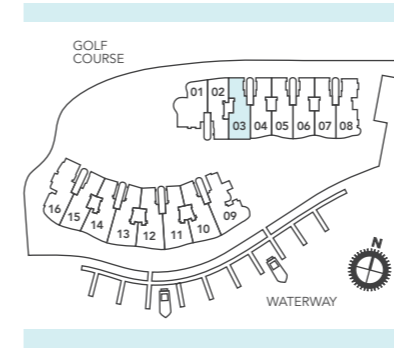


THREE-BEDROOM

Type A1b-g

202 sq.m. / 2,174 sq.ft.

Including PES of 43 sq.m.
51 Cove Drive, #01-03

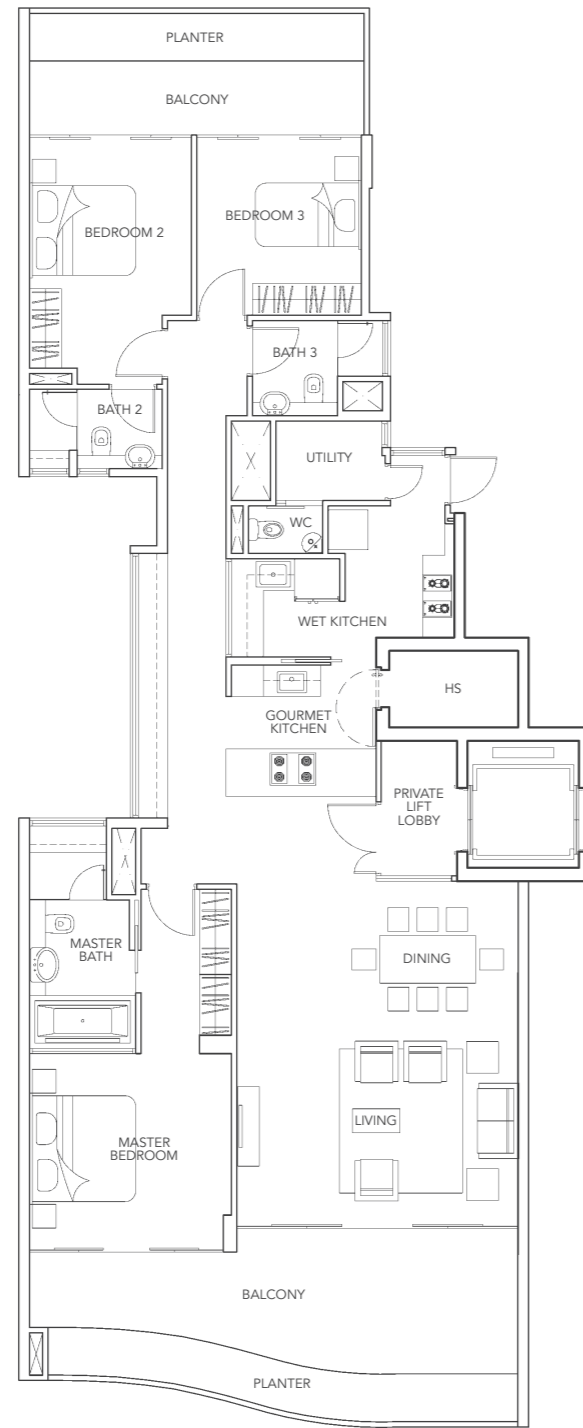
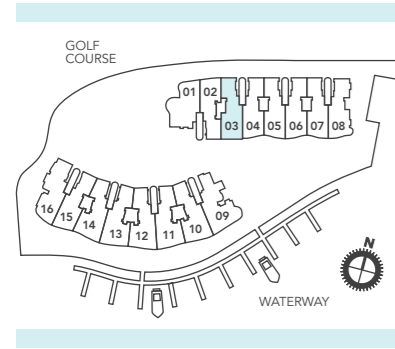


THREE-BEDROOM

Type A1b

199 sq.m. / 2,142 sq.ft.

51 Cove Drive, #02-03 to #05-03

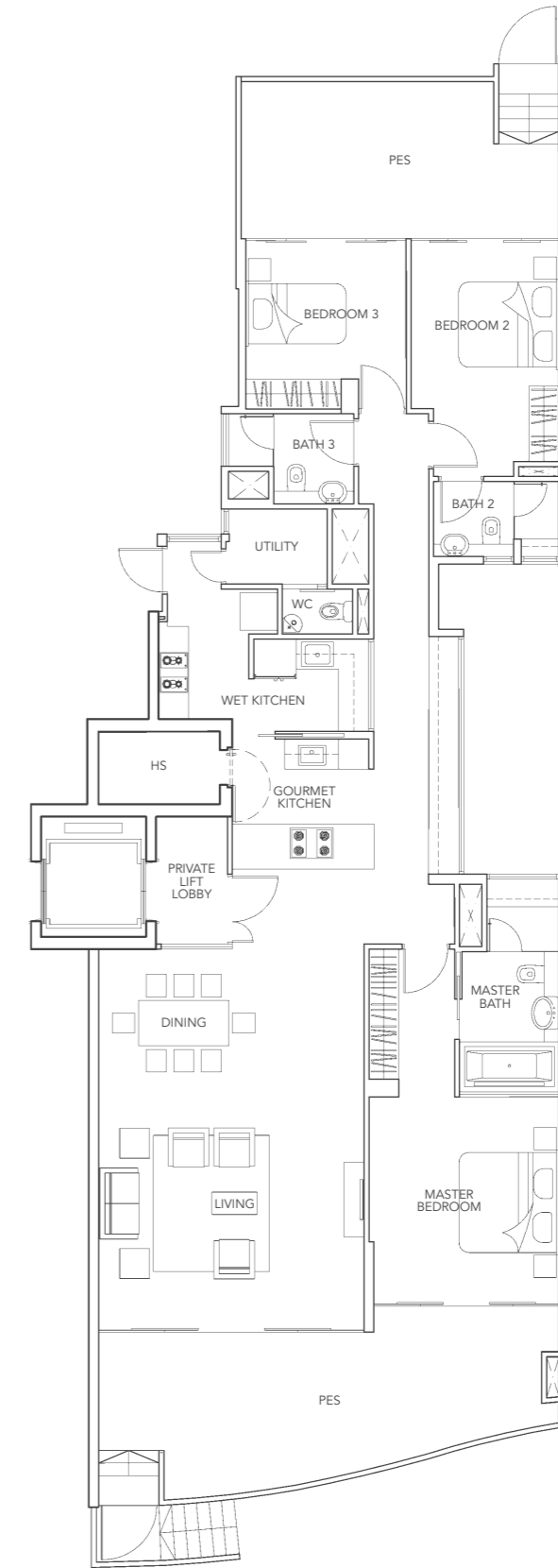
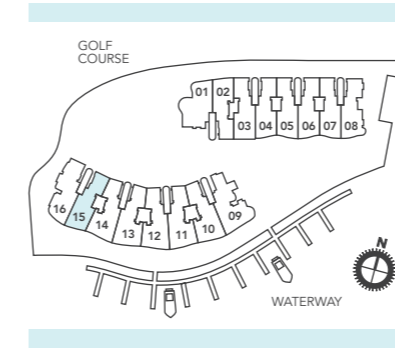


THREE-BEDROOM

Type A1c-g

215 sq.m. / 2,314 sq.ft.

Including PES of 54 sq.m.
55 Cove Drive, #01-15

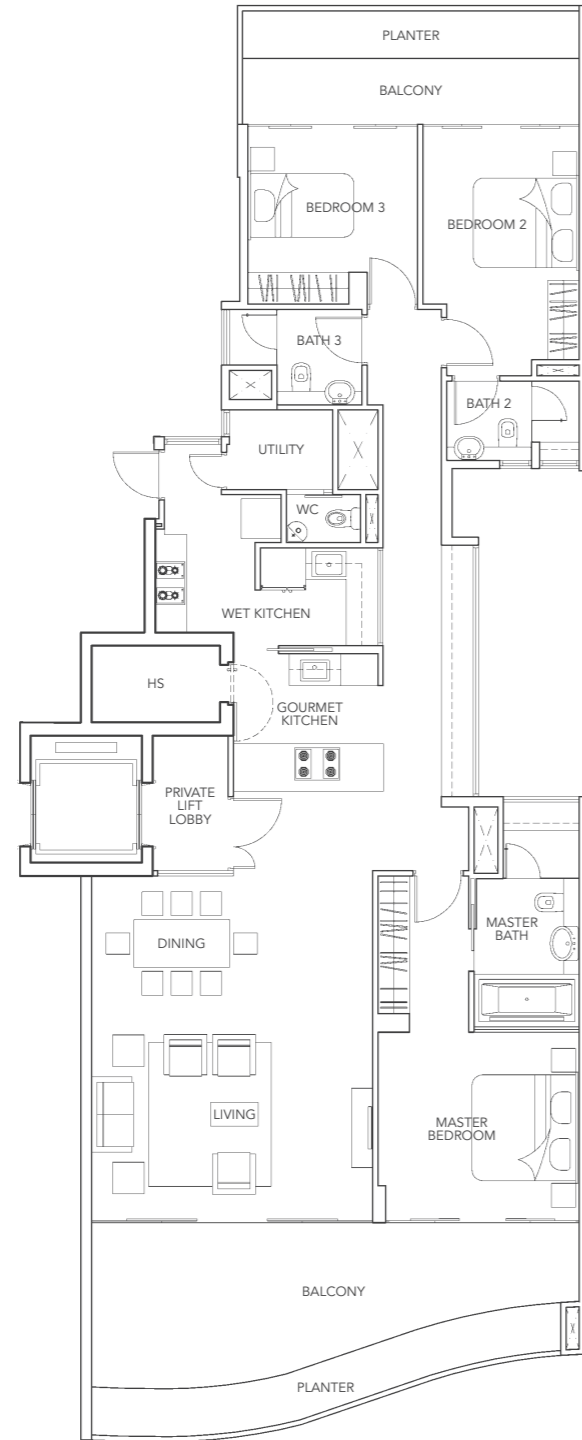
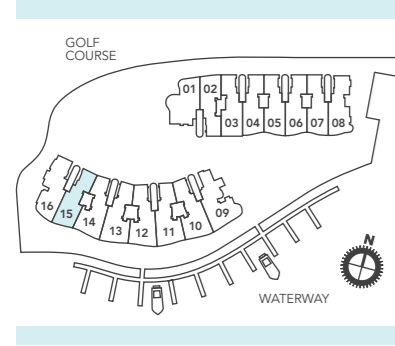


THREE-BEDROOM

Type A1c

200 sq.m. / 2,153 sq.ft.

55 Cove Drive, #02-15 to #05-15

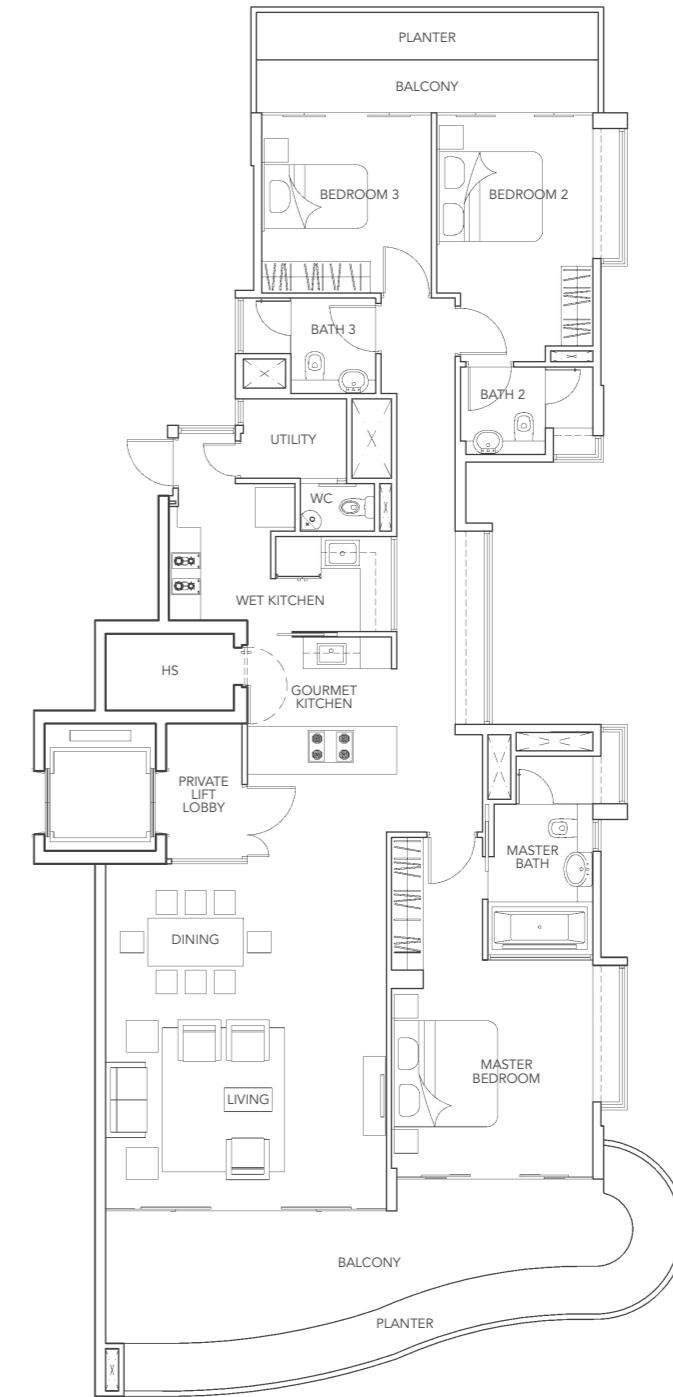
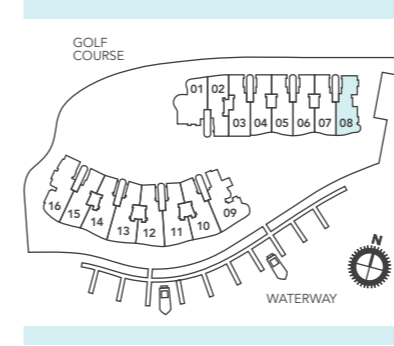


THREE-BEDROOM

Type A1d

203 sq.m. / 2,185 sq.ft.

51 Cove Drive, #03-08 to #05-08

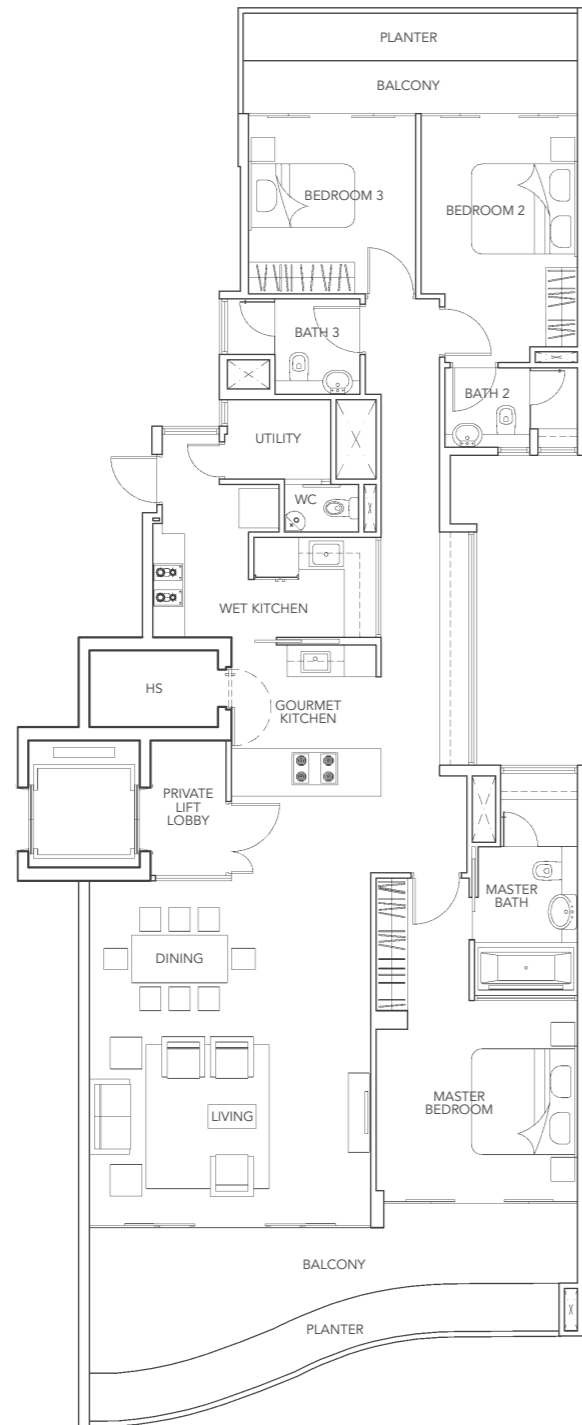
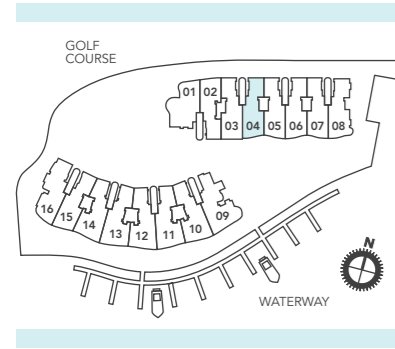


THREE-BEDROOM

Type A1e

195 sq.m. / 2,099 sq.ft.

51 Cove Drive, #02-04 to #05-04

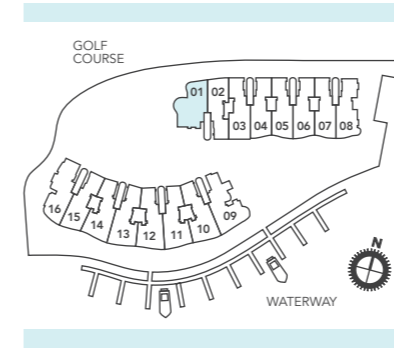


THREE-BEDROOM

Type A2-g

239 sq.m. / 2,573 sq.ft.

Including PES of 73 sq.m.
51 Cove Drive, #01-01

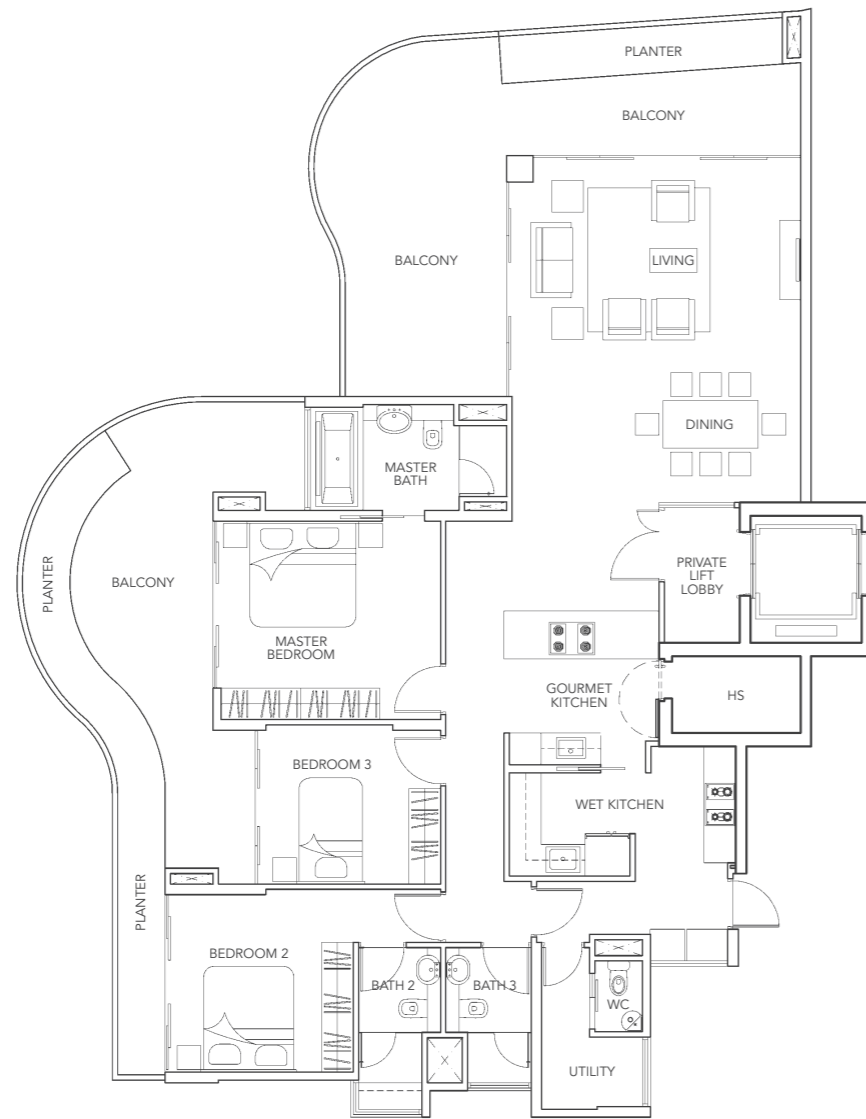
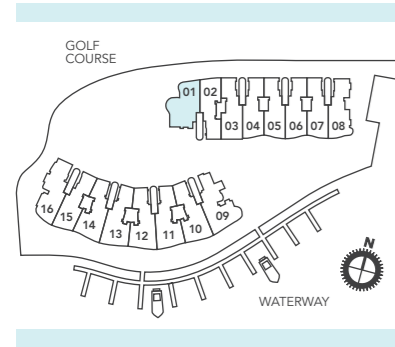


THREE-BEDROOM

Type A2

224 sq.m. / 2,411 sq.ft.

51 Cove Drive, #02-01 to #05-01

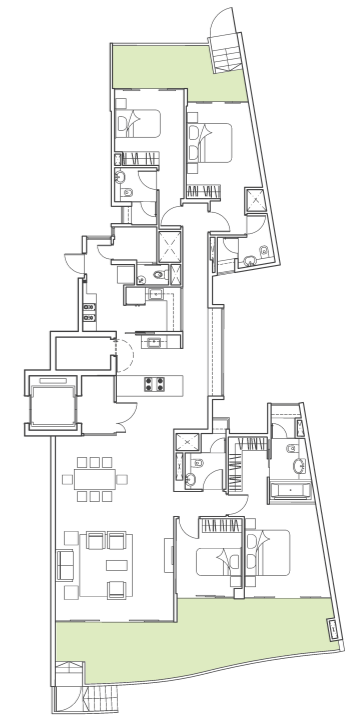
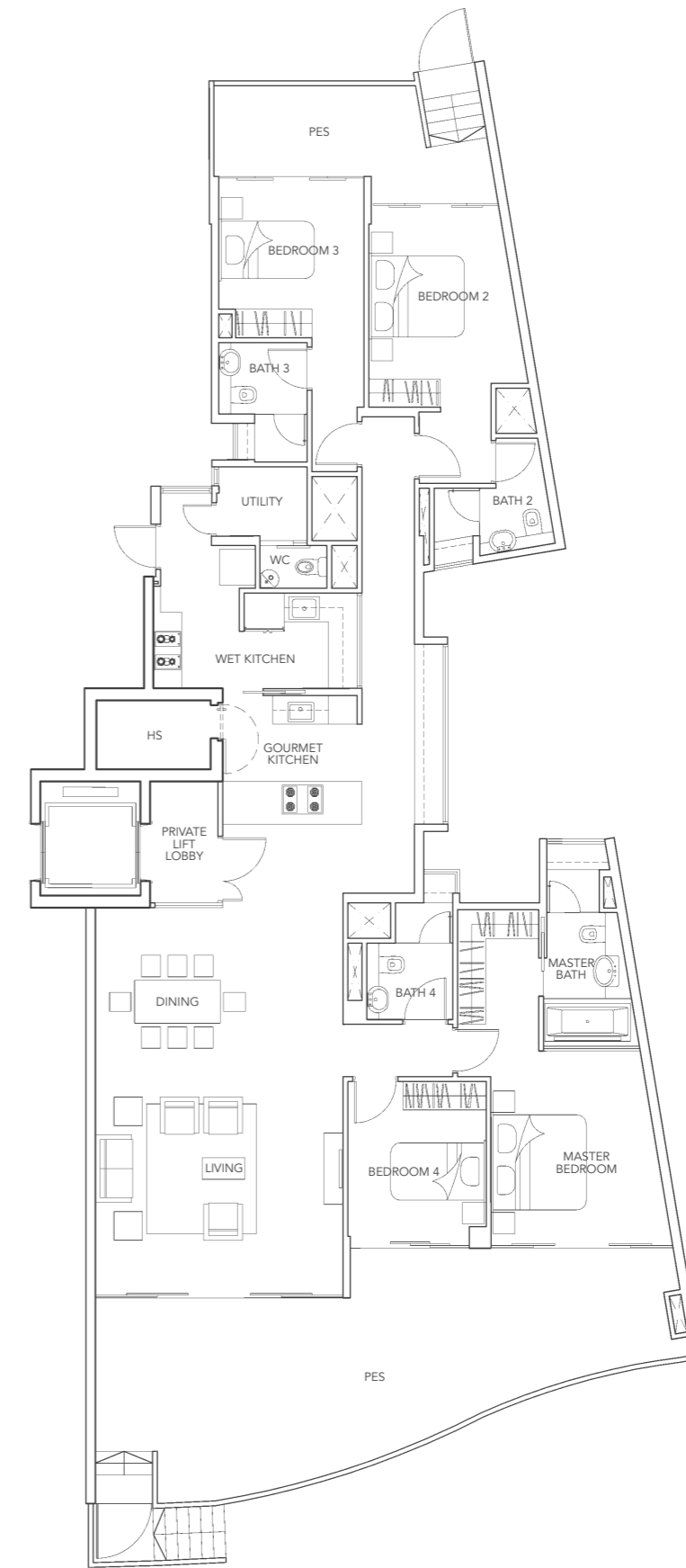
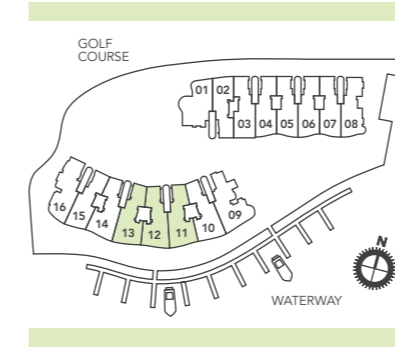


FOUR-BEDROOM

Type B1-g

249 sq.m. / 2,680 sq.ft.

Including PES of 63 sq.m.
55 Cove Drive, #01-11, #01-12



Type B1b-g

238 sq.m. / 2,562 sq.ft.

Including PES of 52 sq.m.
55 Cove Drive, #01-13

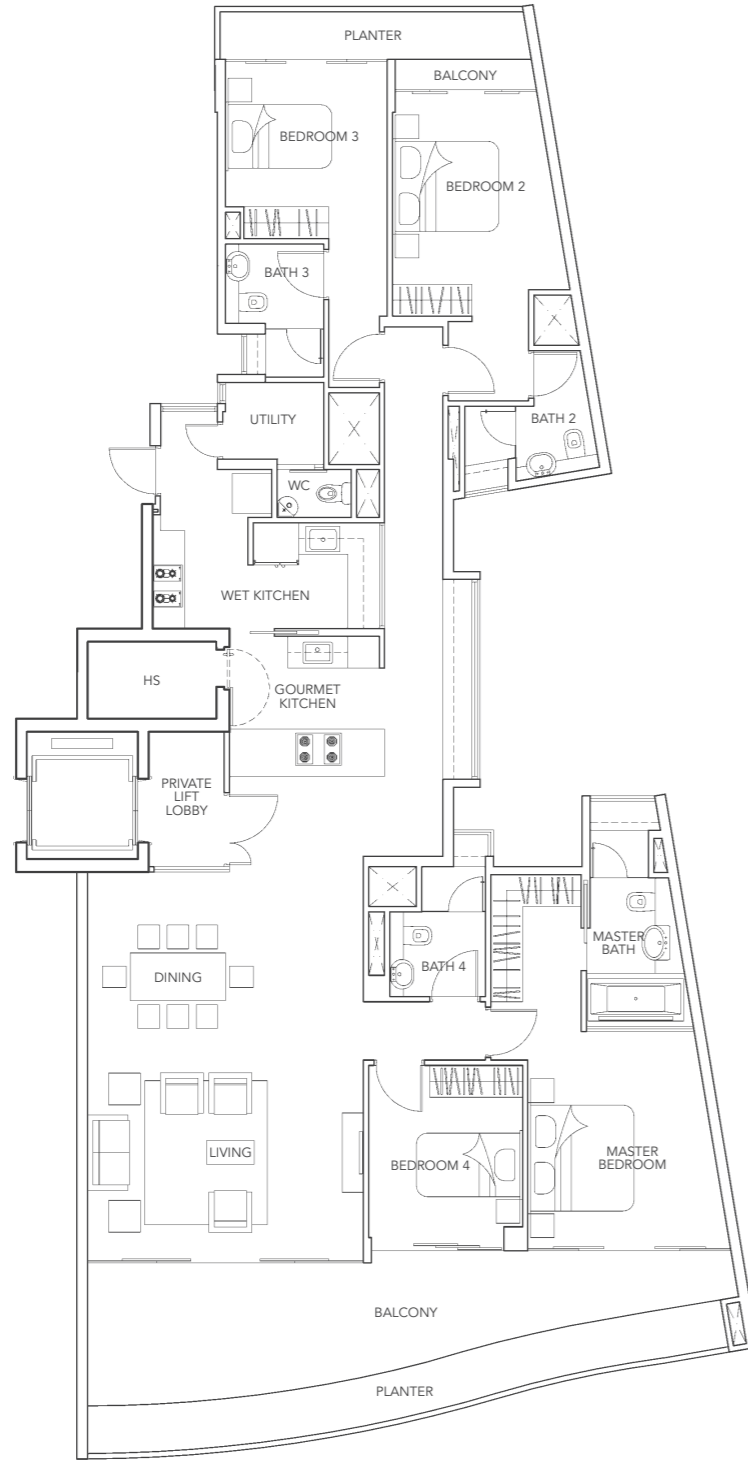
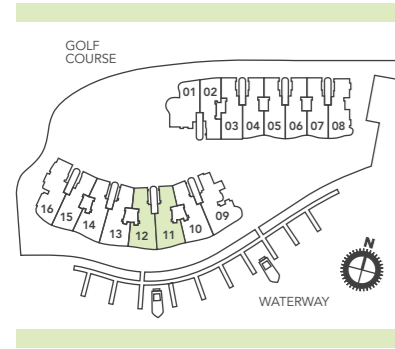
Differences between Type B1-g and Type B1b-g are in the sizes of the PES areas, which are shaded. The rest of their layouts are otherwise identical.

FOUR-BEDROOM

Type B1

226 sq.m. / 2,433 sq.ft.

55 Cove Drive,
#02-11 to #05-11, #02-12 to #05-12

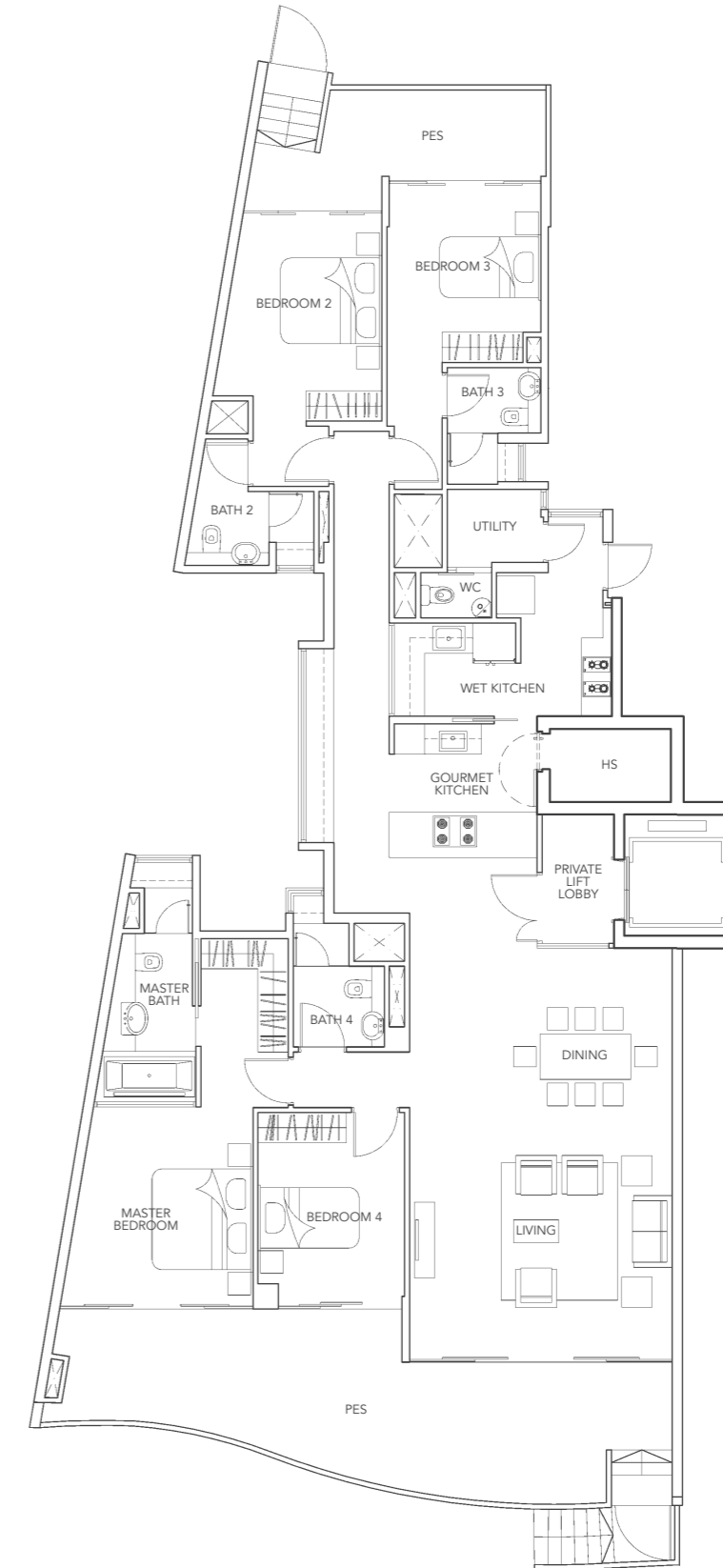
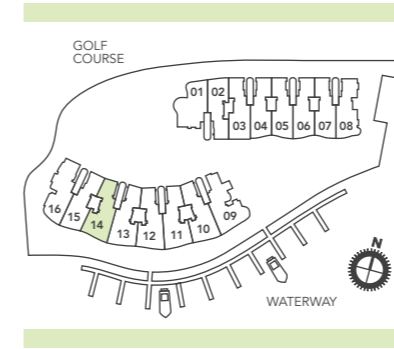


FOUR-BEDROOM

Type B1a-g

238 sq.m. / 2,562 sq.ft.

Including PES of 52 sq.m.
55 Cove Drive, #01-14

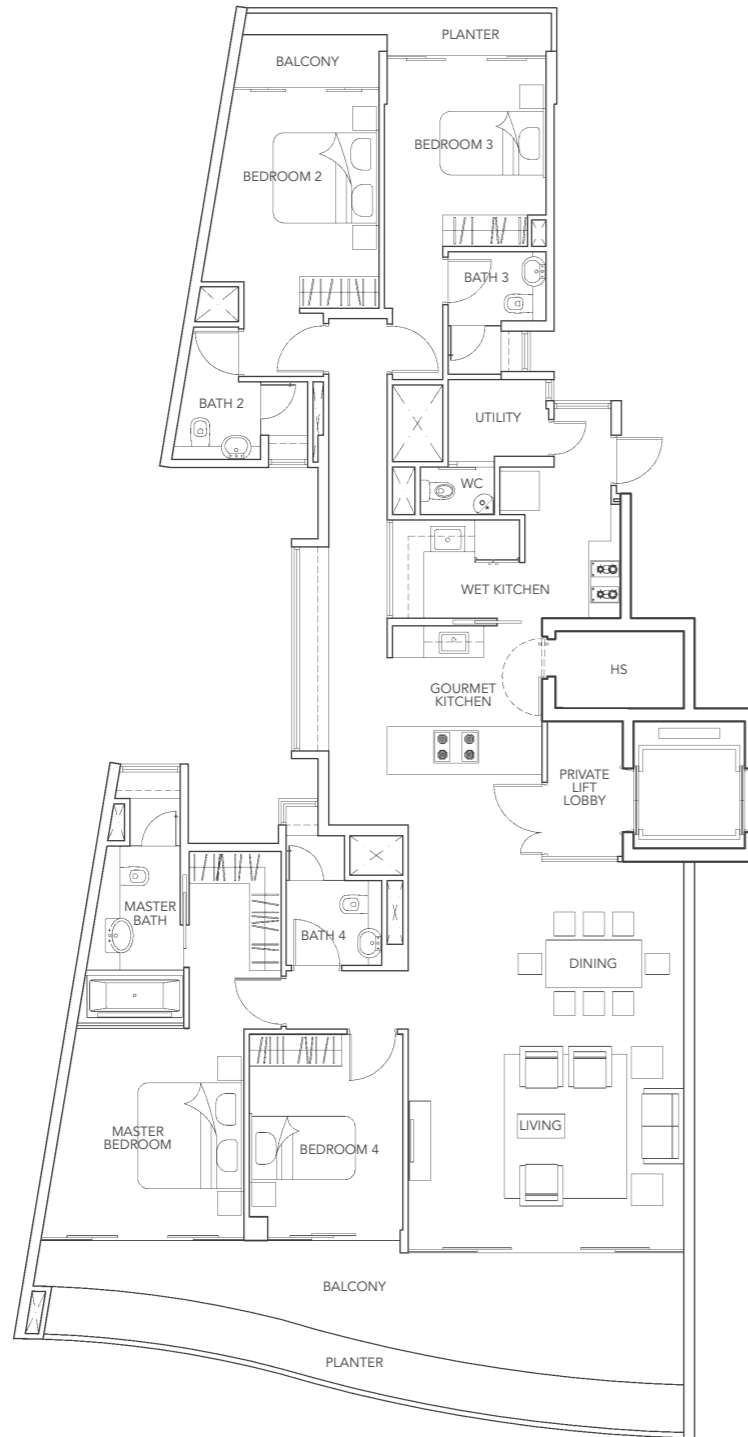
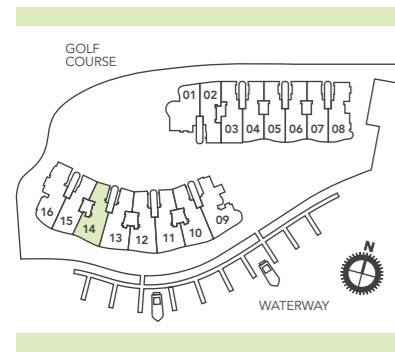


FOUR-BEDROOM

Type B1a

223 sq.m. / 2,400 sq.ft.

55 Cove Drive, #02-14 to #05-14

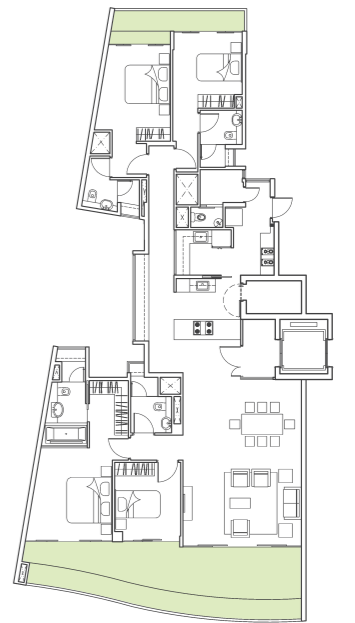
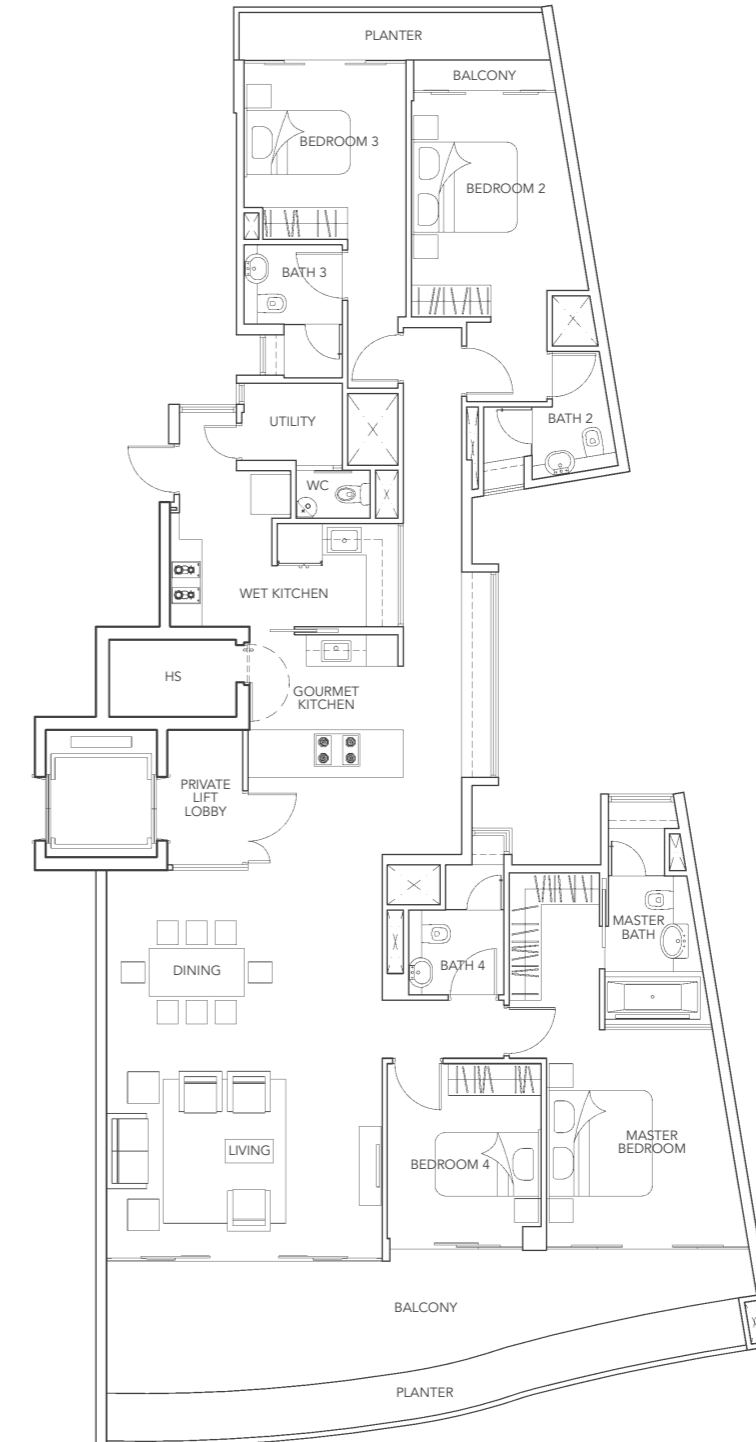
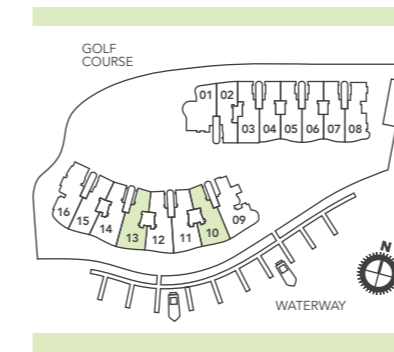


FOUR-BEDROOM

Type B1b

225 sq.m. / 2,422 sq.ft.

55 Cove Drive, #02-13 to #05-13



Type B1c

224 sq.m. / 2,411 sq.ft.

55 Cove Drive, #02-10 to #05-10

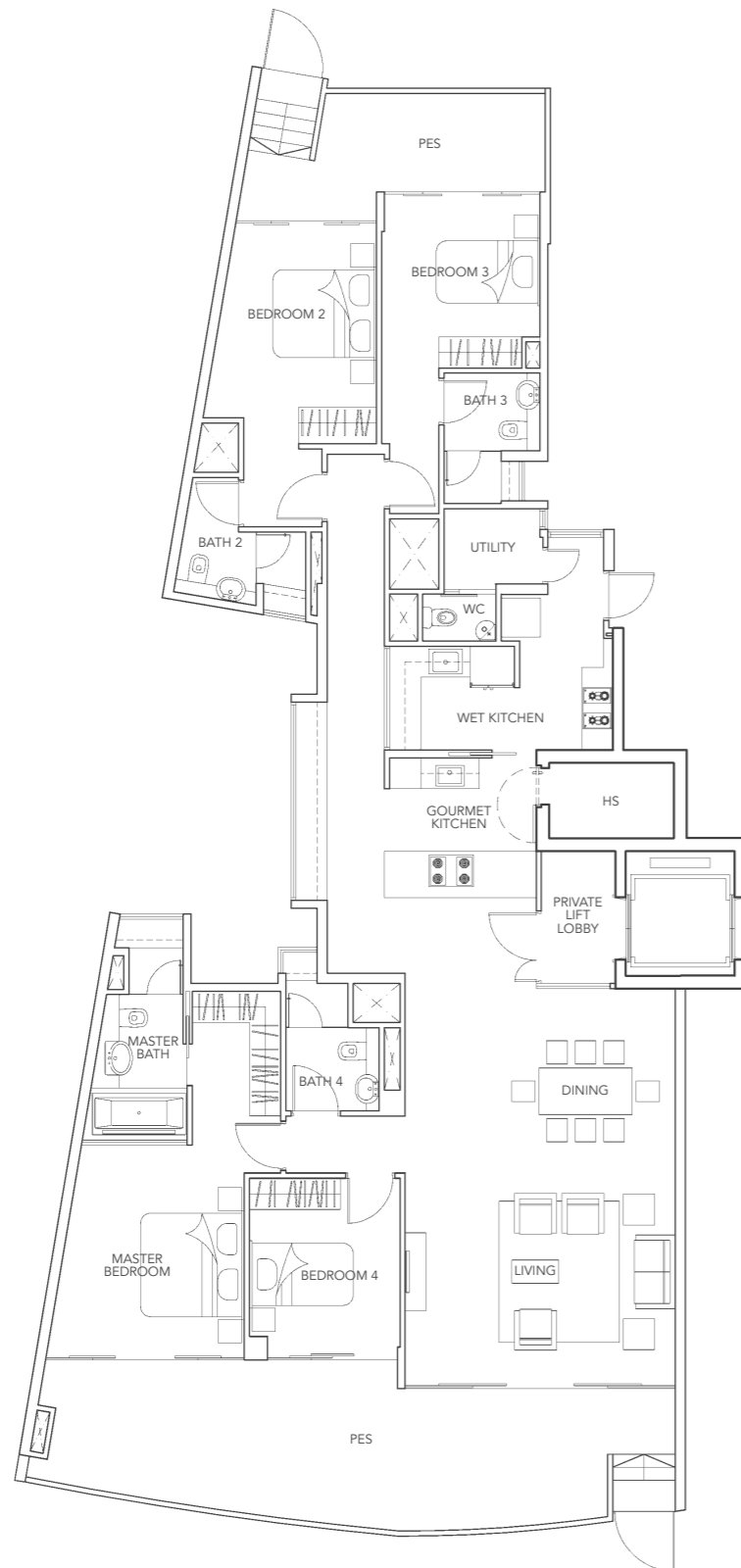
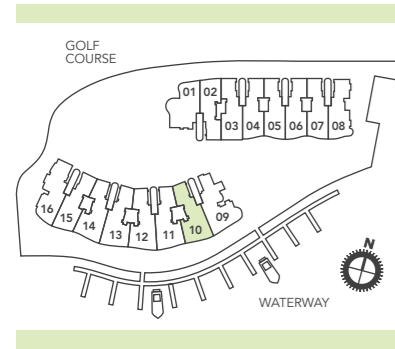
Differences between Type B1b and Type B1c are in the sizes of the balcony and planter, which are shaded. The rest of their layouts are otherwise identical.

FOUR-BEDROOM

Type B1c-g

232 sq.m. / 2,497 sq.ft.

Including PES of 48 sq.m.
55 Cove Drive, #01-10

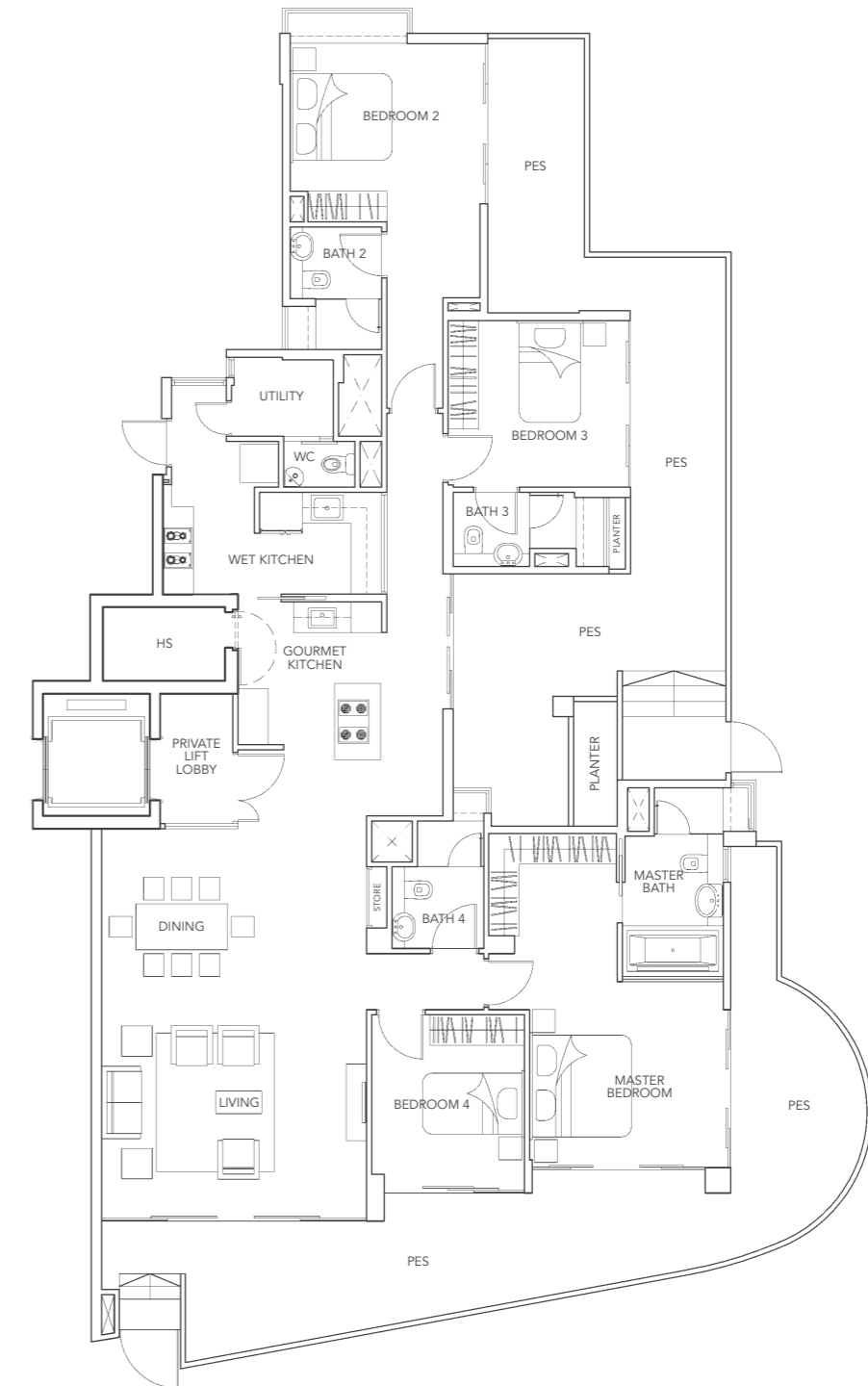
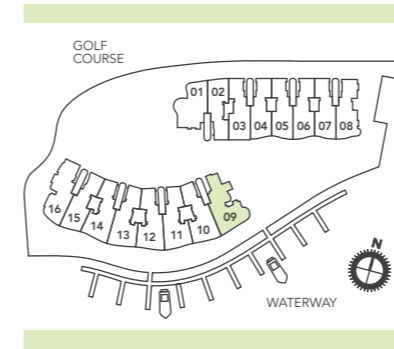


FOUR-BEDROOM

Type B2-g

282 sq.m. / 3,035 sq.ft.

Including PES of 91 sq.m.
55 Cove Drive, #01-09

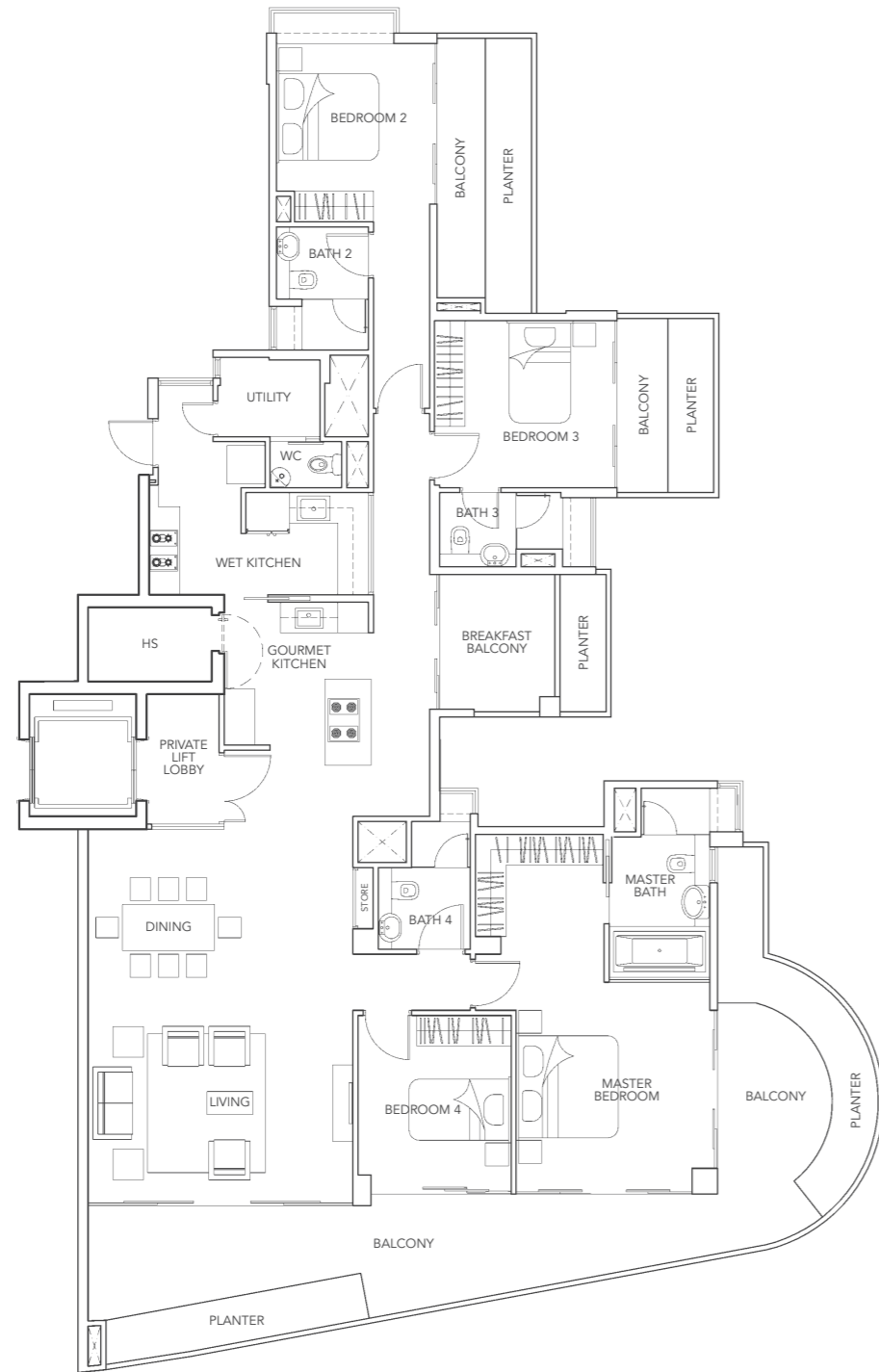
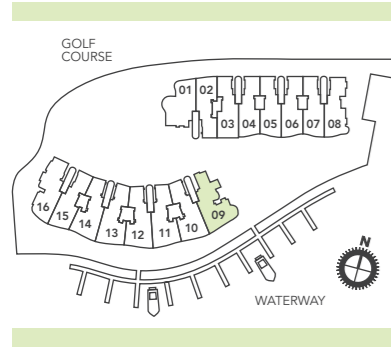


FOUR-BEDROOM

Type B2

258 sq.m. / 2,777 sq.ft.

55 Cove Drive, #02-09 to #05-09

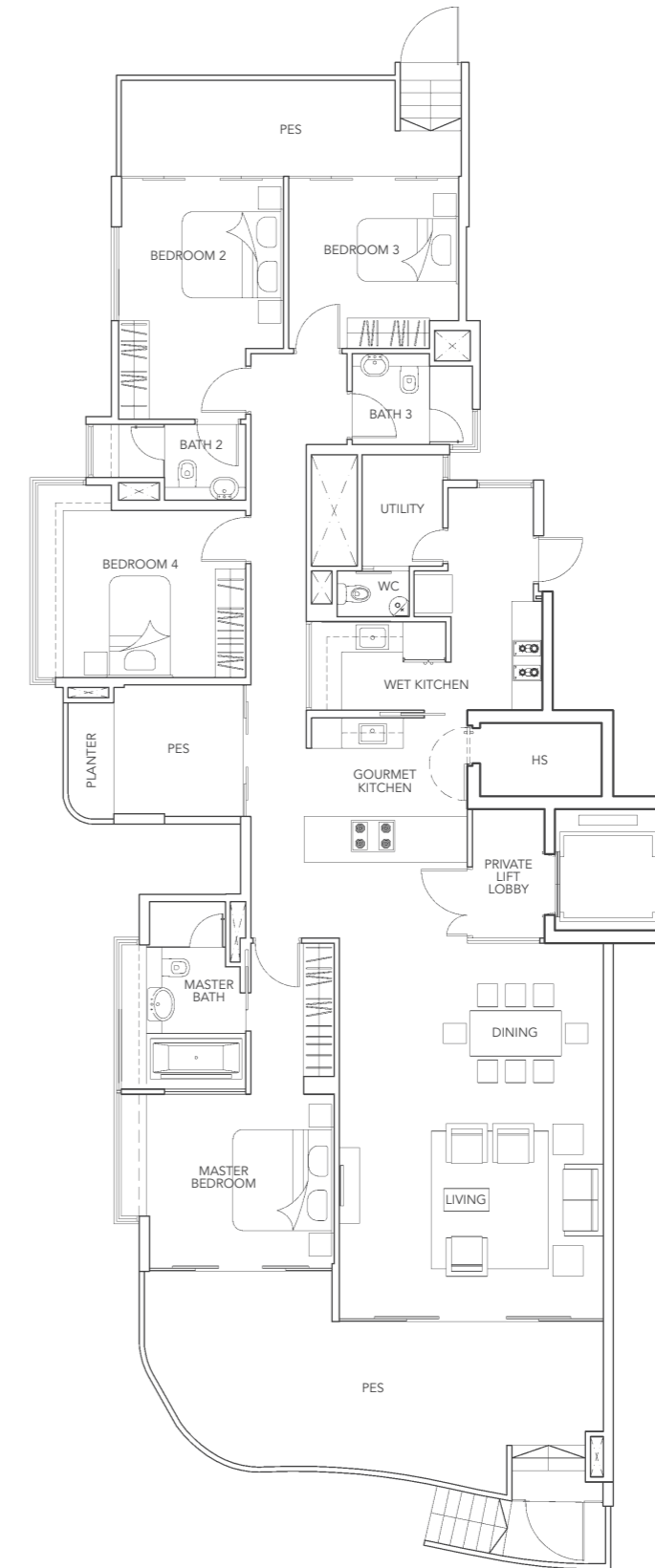
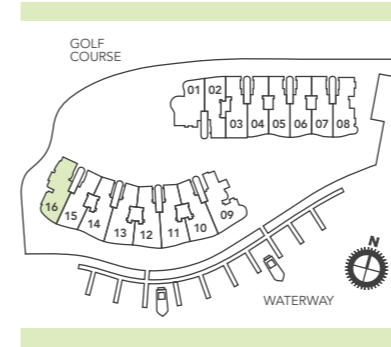


FOUR-BEDROOM

Type B3-g

240 sq.m. / 2,583 sq.ft.

Including PES of 57 sq.m.
55 Cove Drive, #01-16

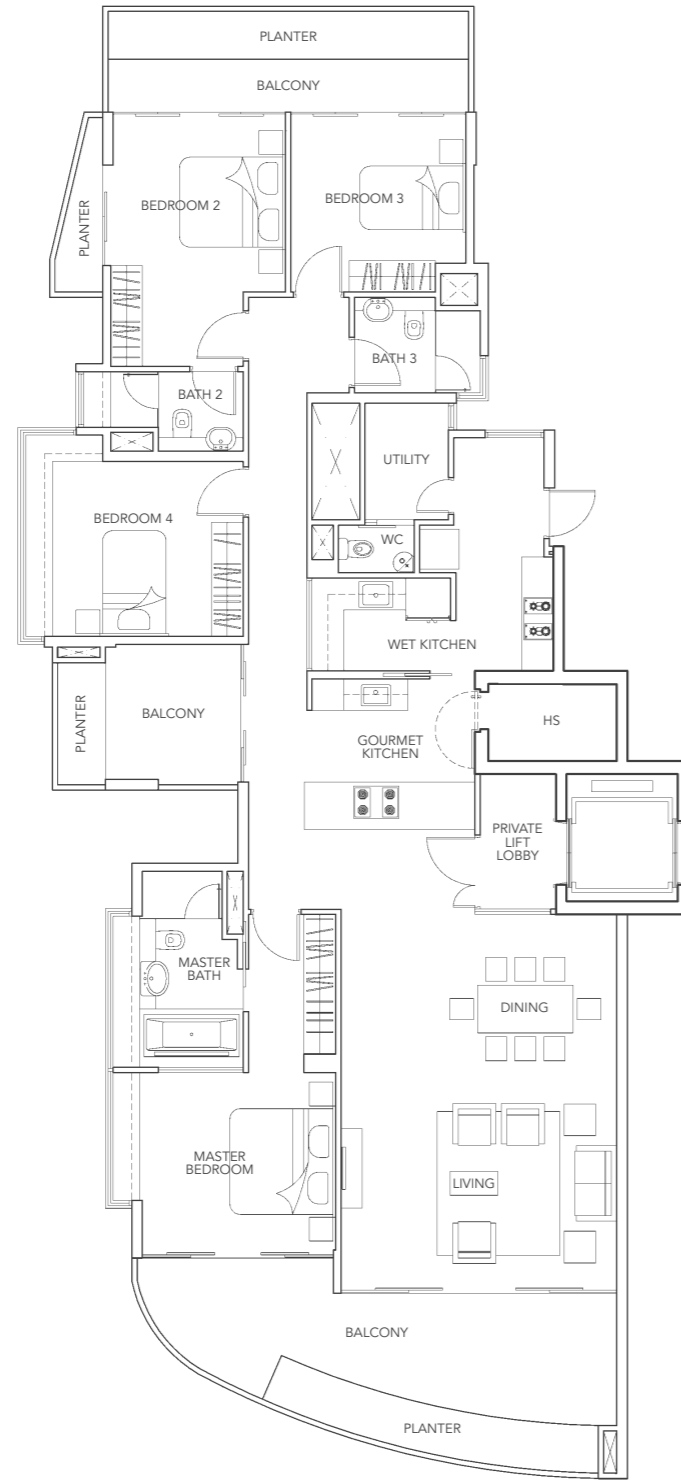
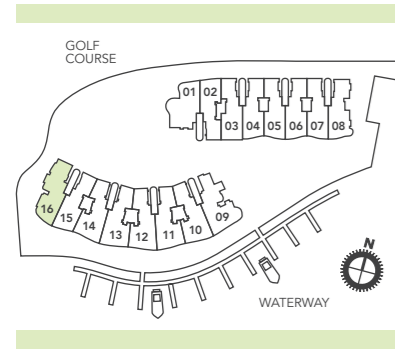


FOUR-BEDROOM

Type B3

232 sq.m. / 2,497 sq.ft.

55 Cove Drive, #02-16 to #05-16



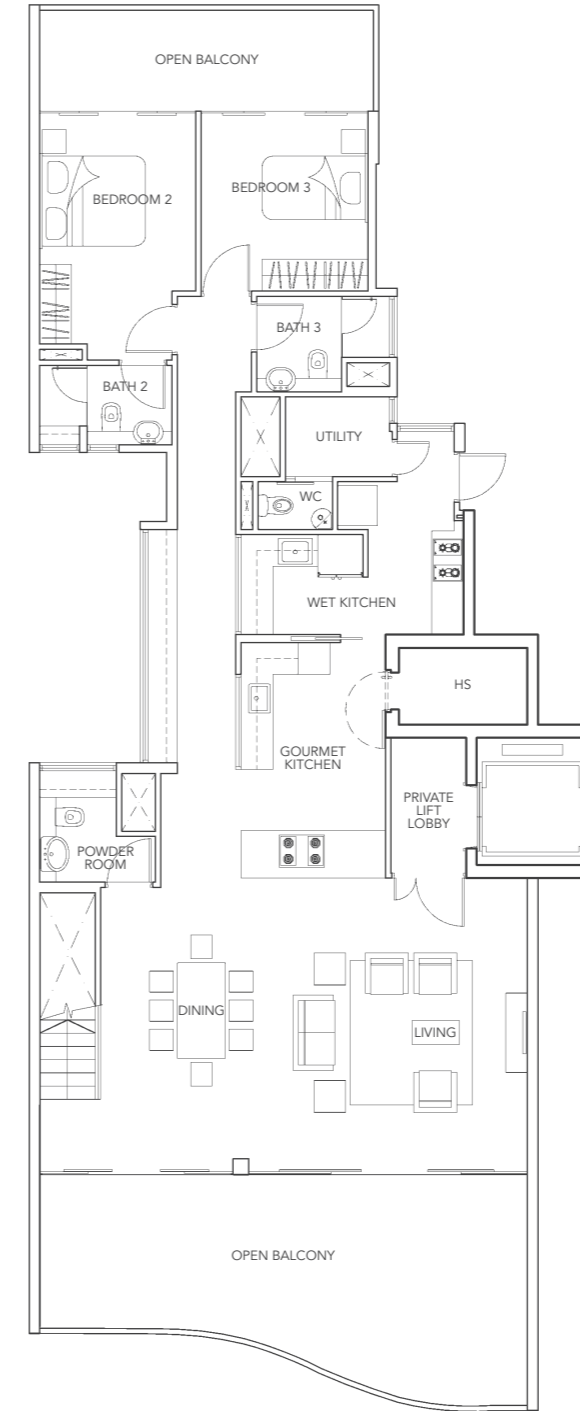
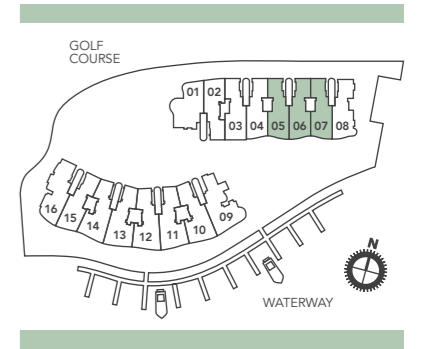
PENTHOUSE

Type P1

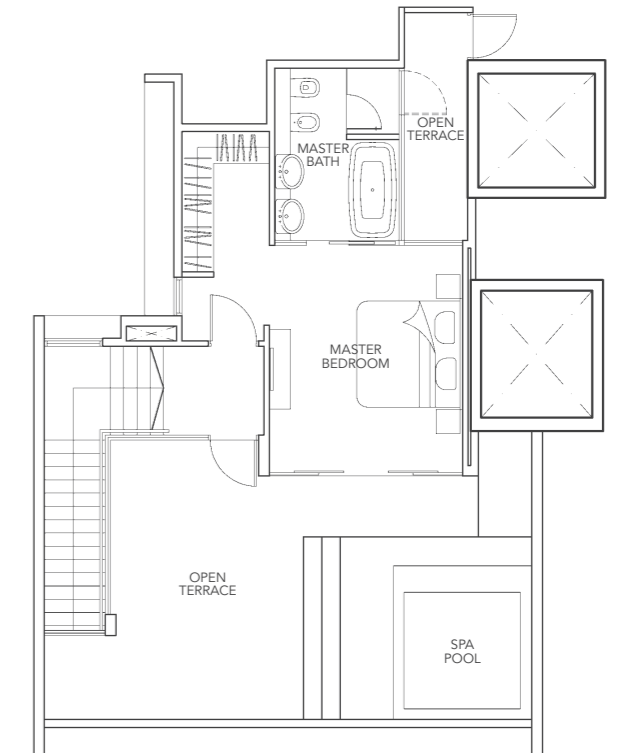
289 sq.m. / 3,111 sq.ft.

Including open balcony/open terrace/spa pool of 95 sq.m.

51 Cove Drive, #06-05, #06-06, #06-07



Lower Penthouse

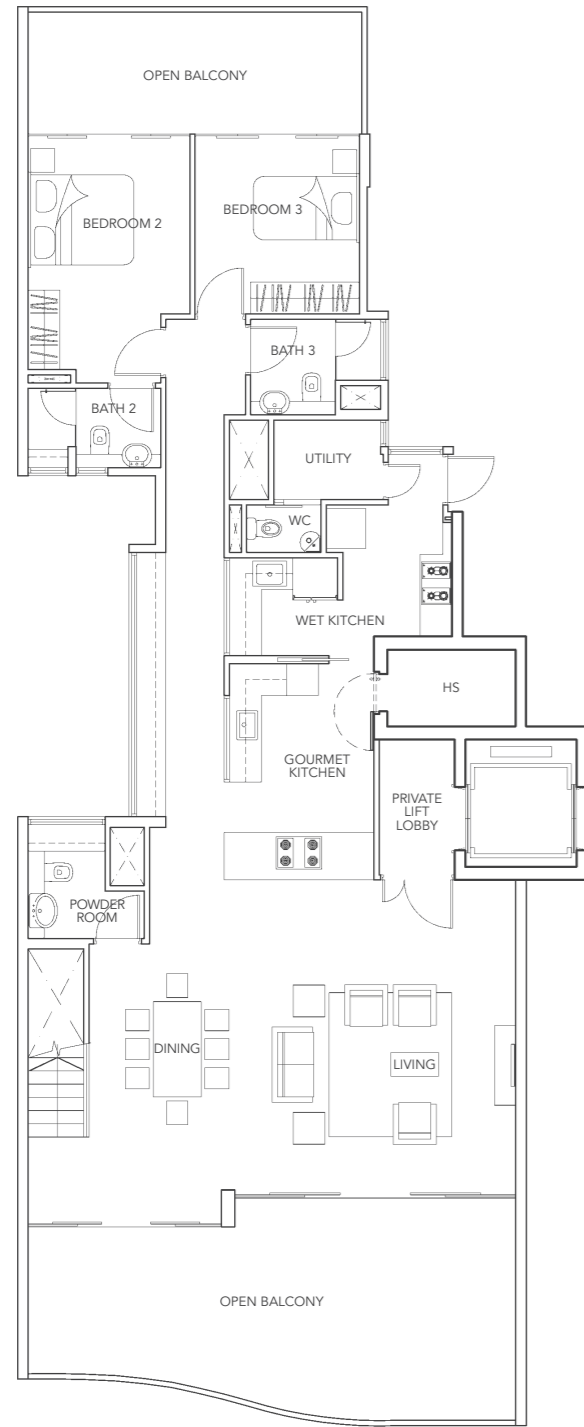


Upper Penthouse

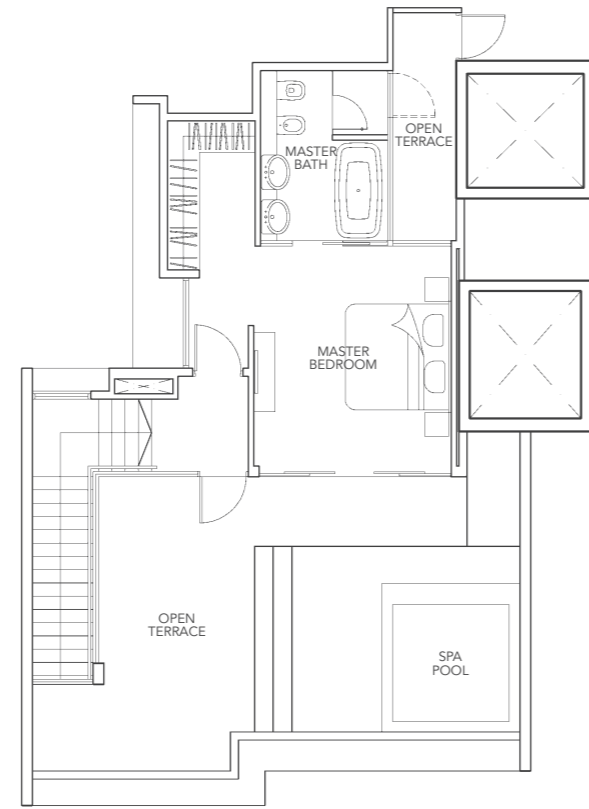
Type P1a

296 sq.m. / 3,186 sq.ft.

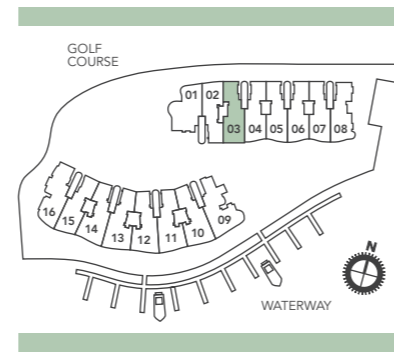
Including open balcony/open terrace/spa pool of 100 sq.m.
51 Cove Drive, #06-03



Lower Penthouse



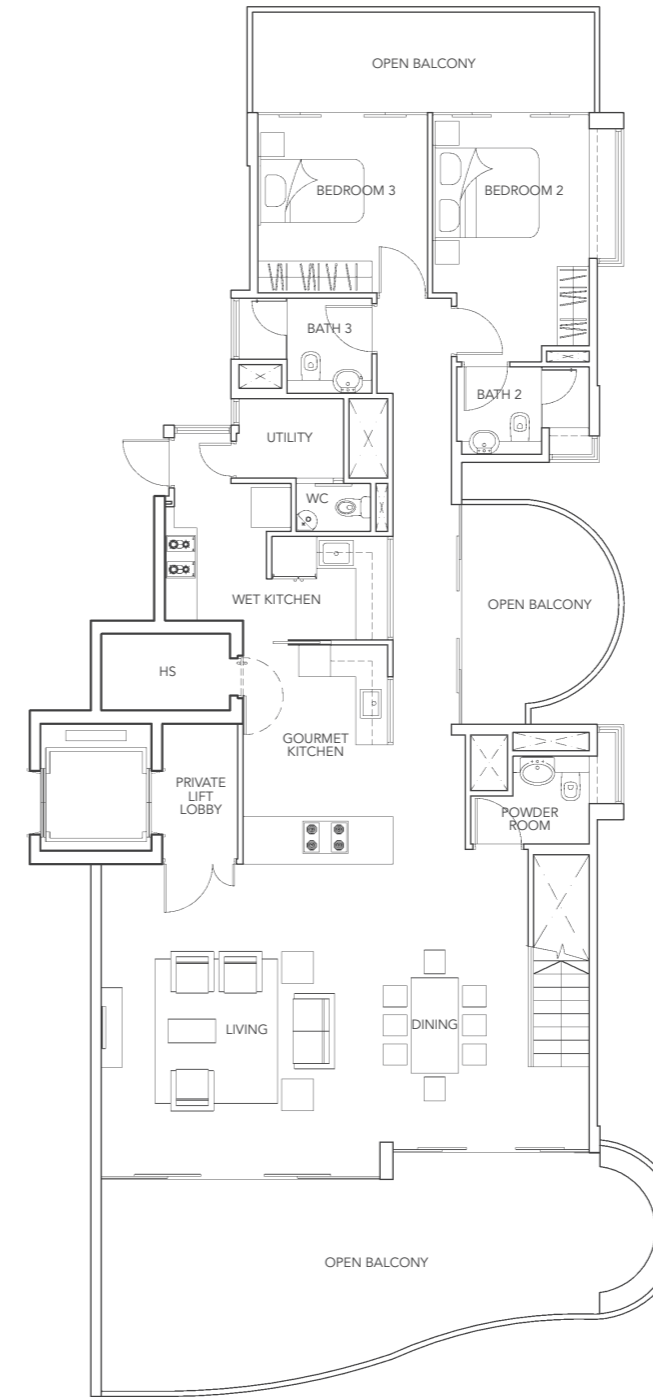
Upper Penthouse



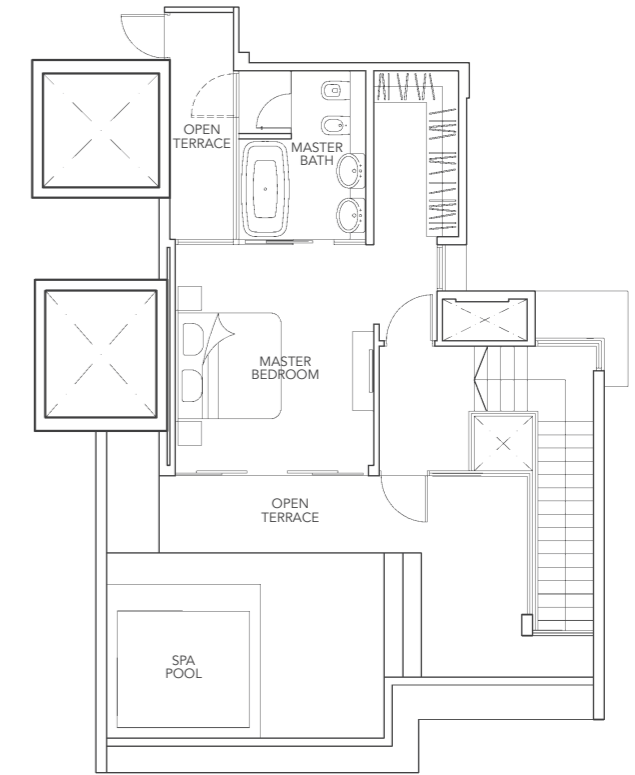
Type P1b

305 sq.m. / 3,283 sq.ft.

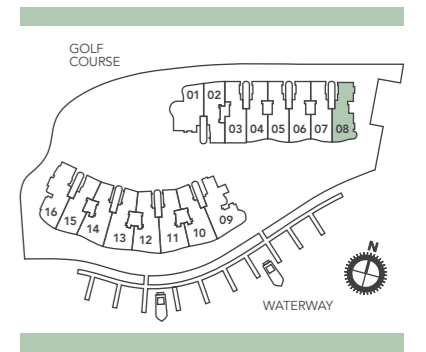
Including open balcony/open terrace/spa pool of 105 sq.m. and strata void of 2 sq.m.
51 Cove Drive, #06-08



Lower Penthouse



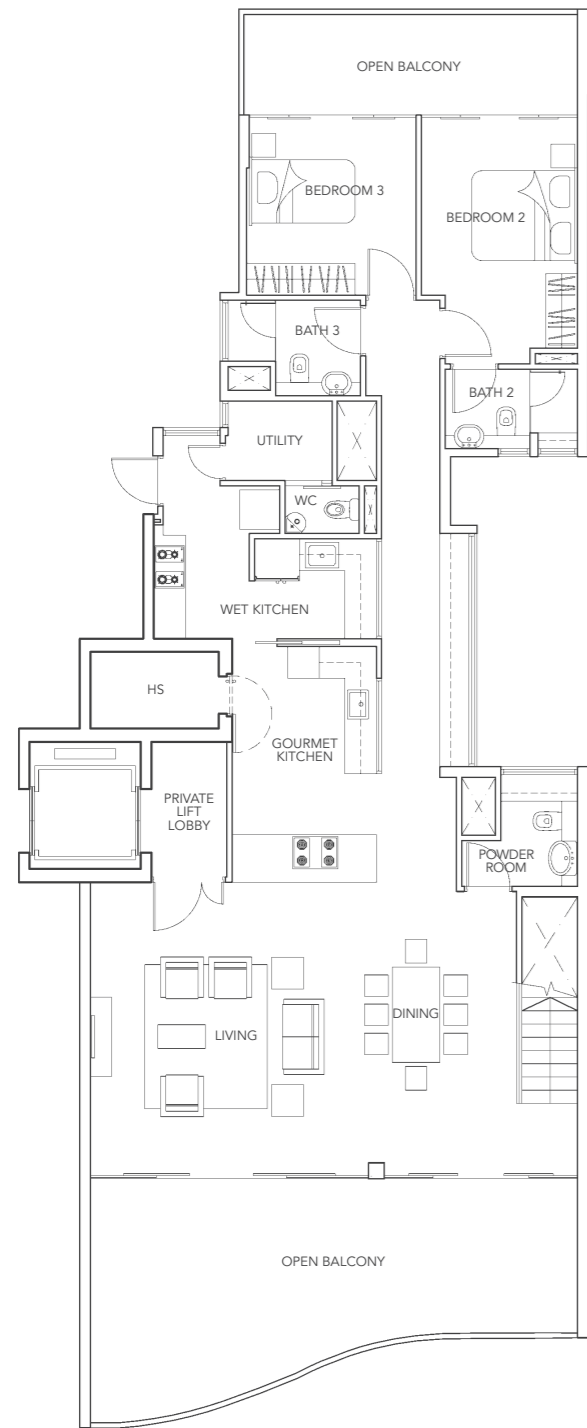
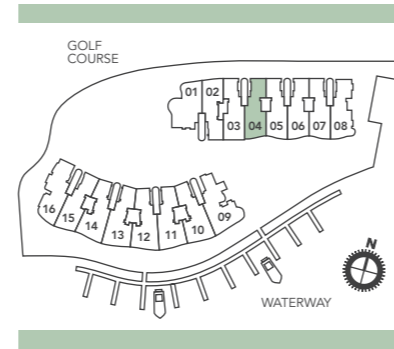
Upper Penthouse



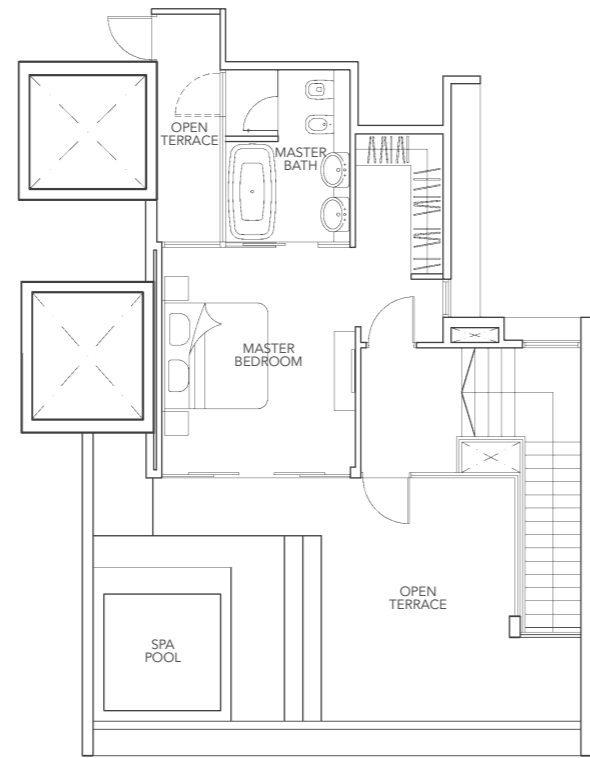
Type P1c

290 sq.m. / 3,122 sq.ft.

Including open balcony/open terrace/spa pool of 93 sq.m. and strata void of 1 sq.m.
51 Cove Drive, #06-04



Lower Penthouse

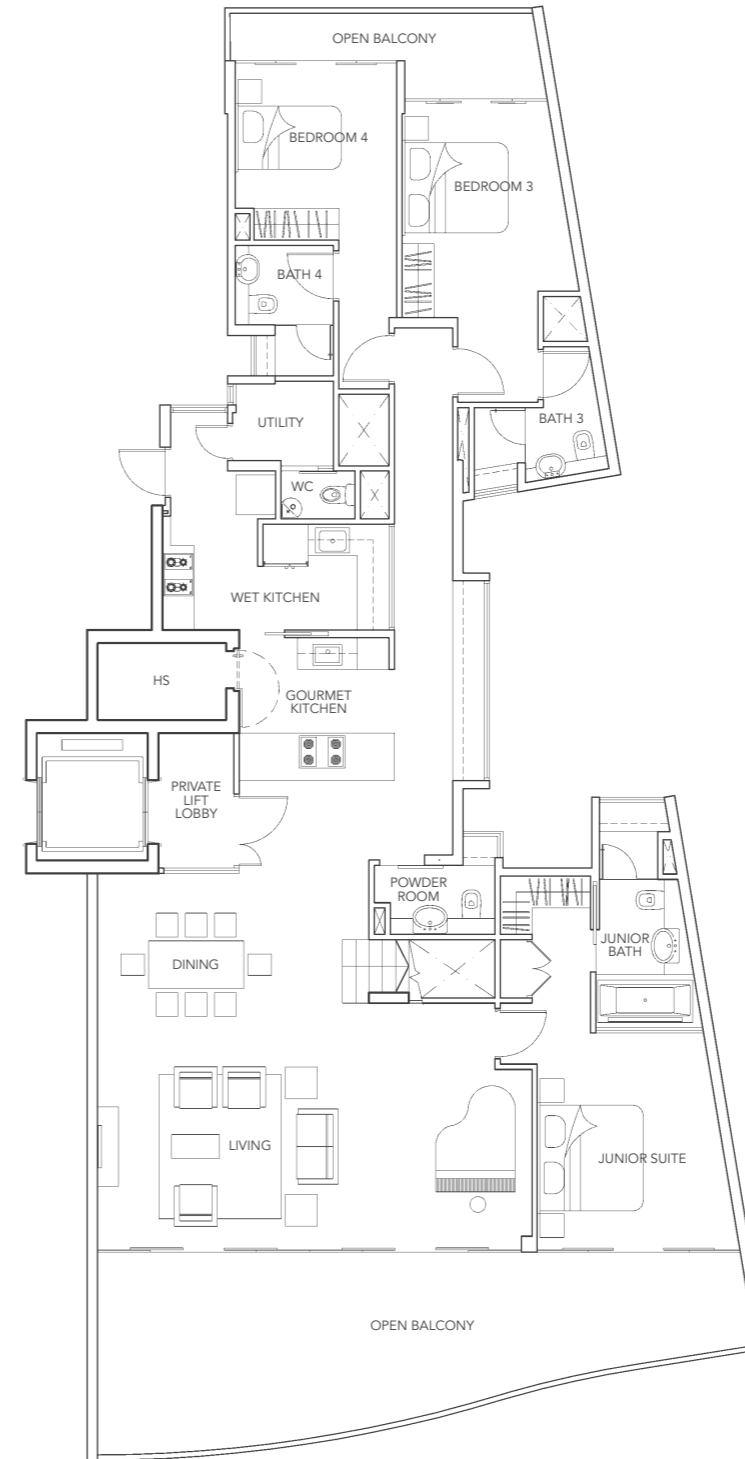
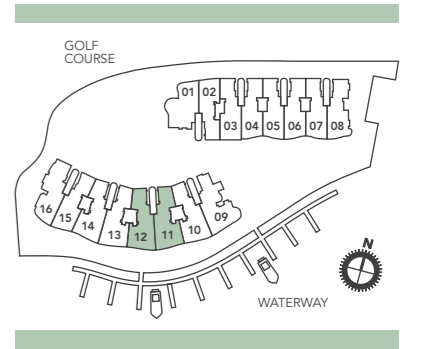


Upper Penthouse

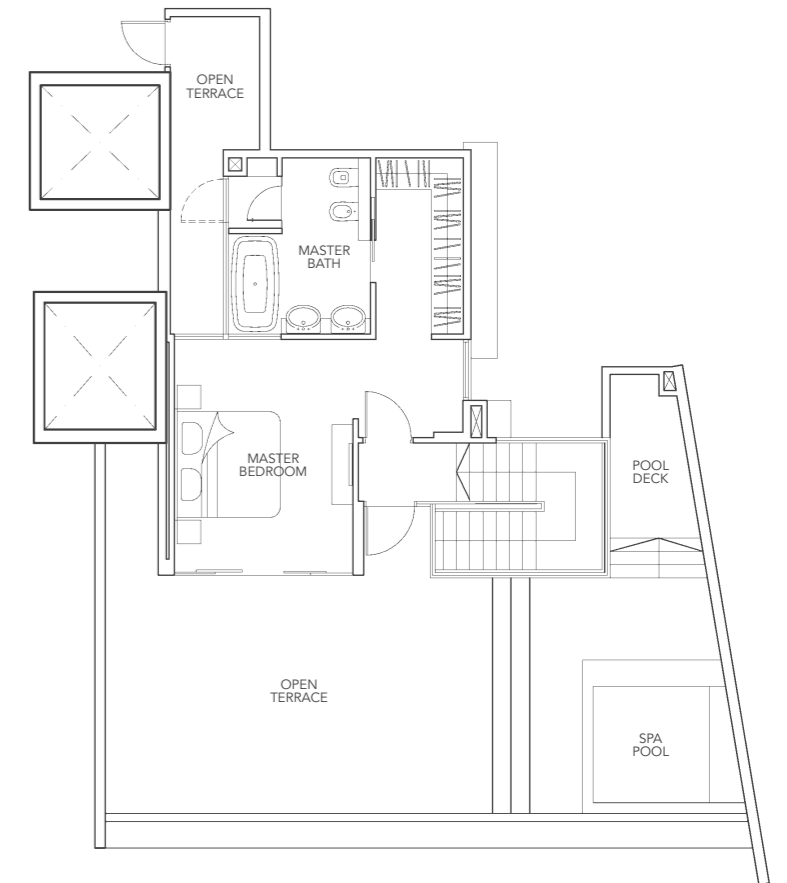
Type P2

348 sq.m. / 3,746 sq.ft.

Including open balcony/open terrace/spa pool of 119 sq.m.
55 Cove Drive, #06-11, #06-12



Lower Penthouse

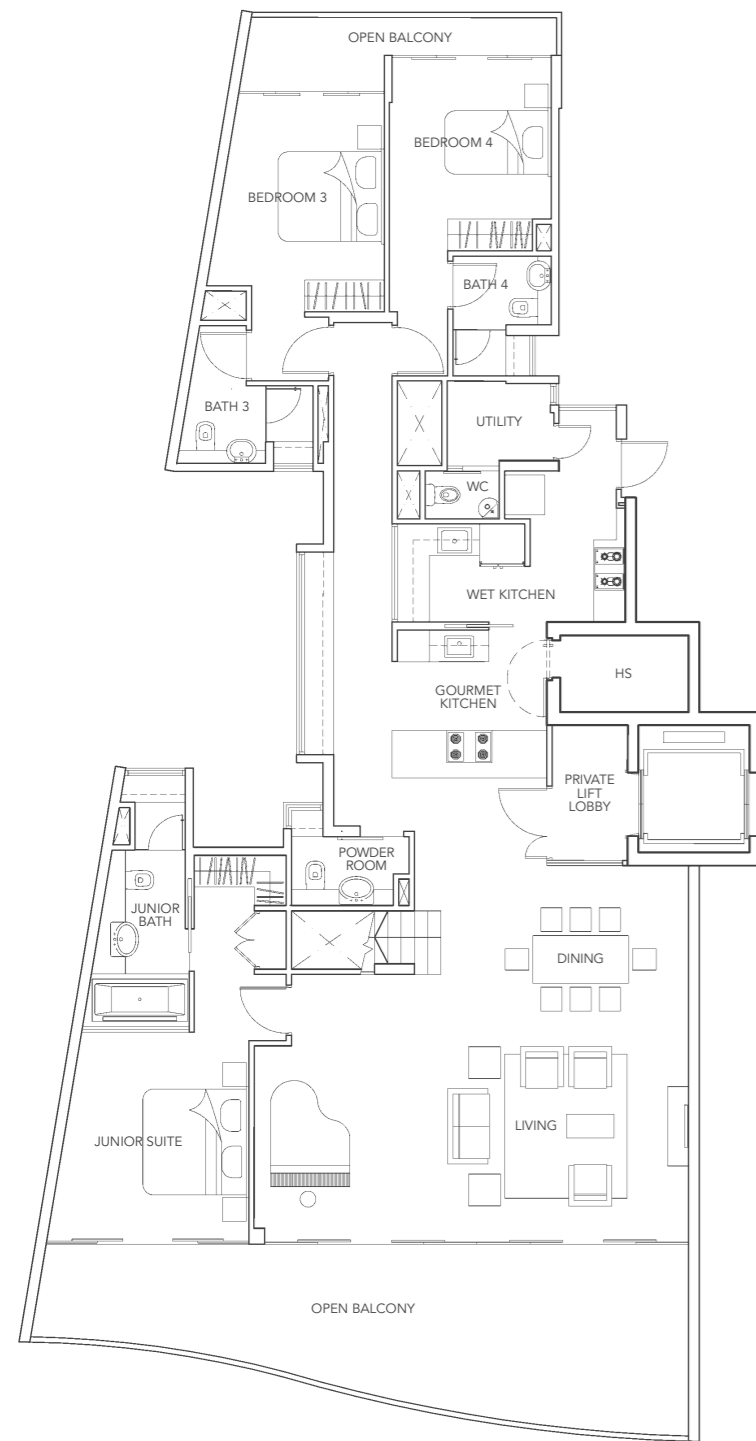
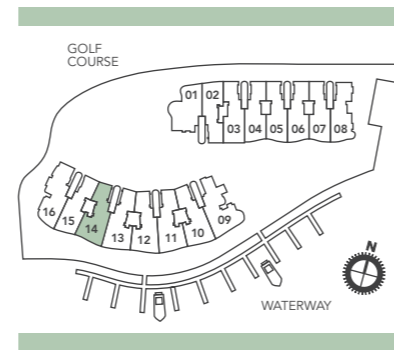


Upper Penthouse

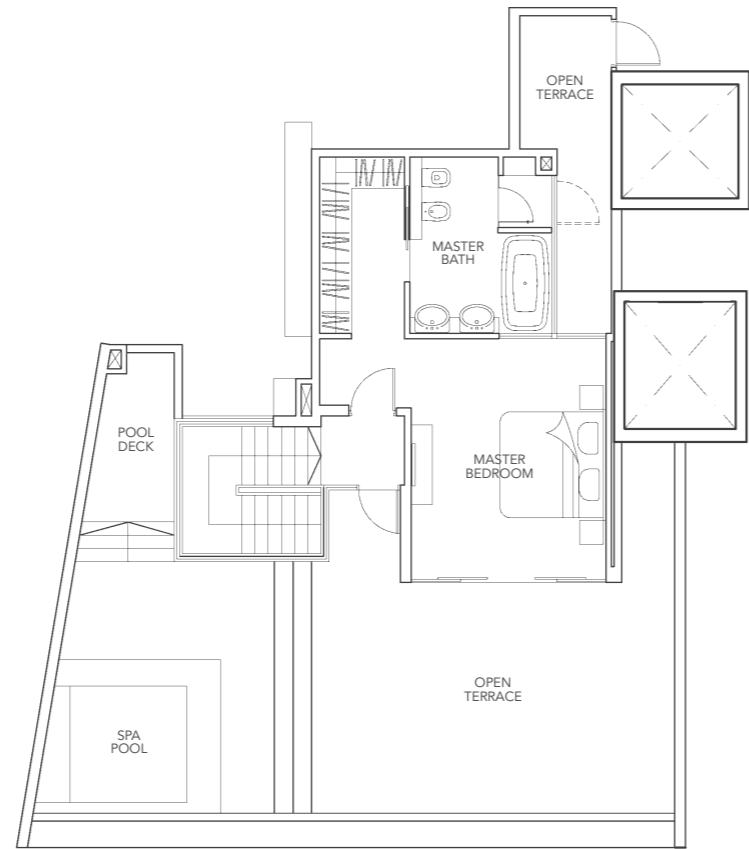
Type P2a

346 sq.m. / 3,724 sq.ft.

Including open balcony/open terrace/spa pool of 117 sq.m.
55 Cove Drive, #06-14



Lower Penthouse

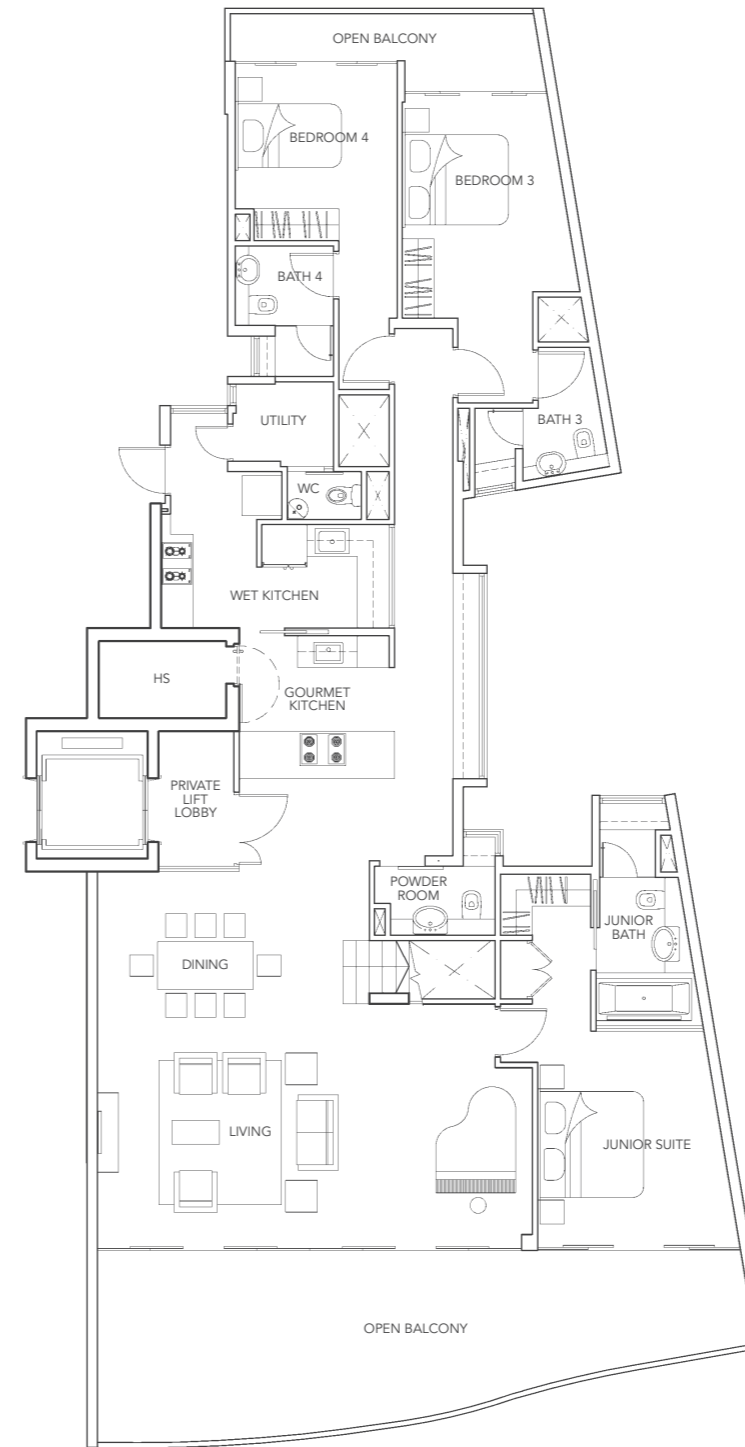
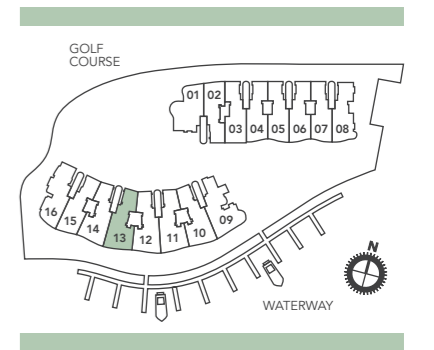


Upper Penthouse

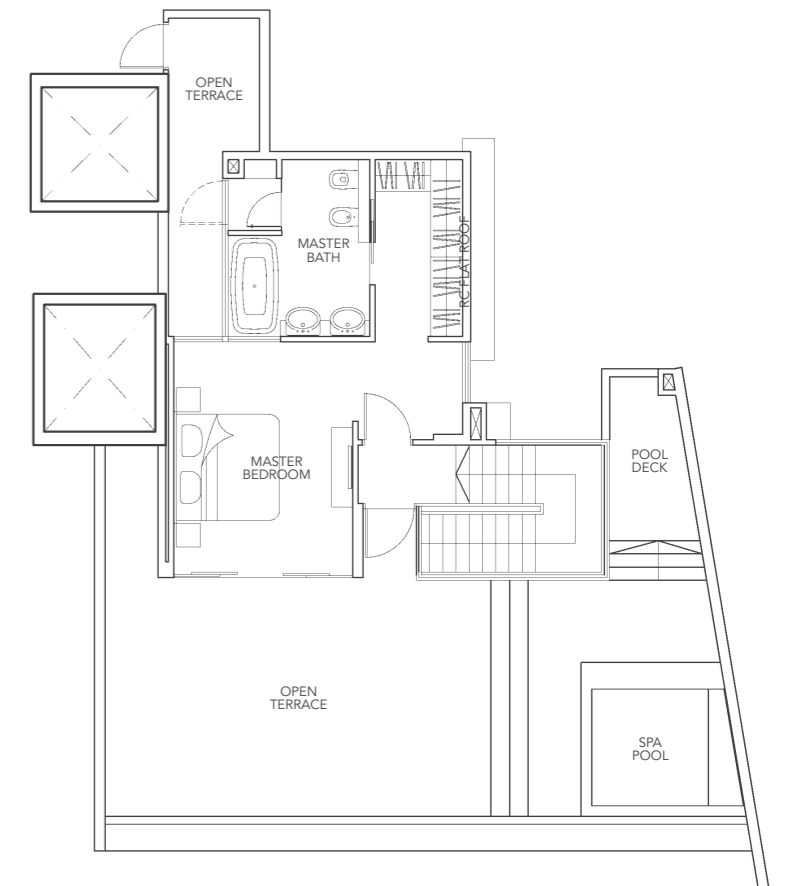
Type P2b

347 sq.m. / 3,735 sq.ft.

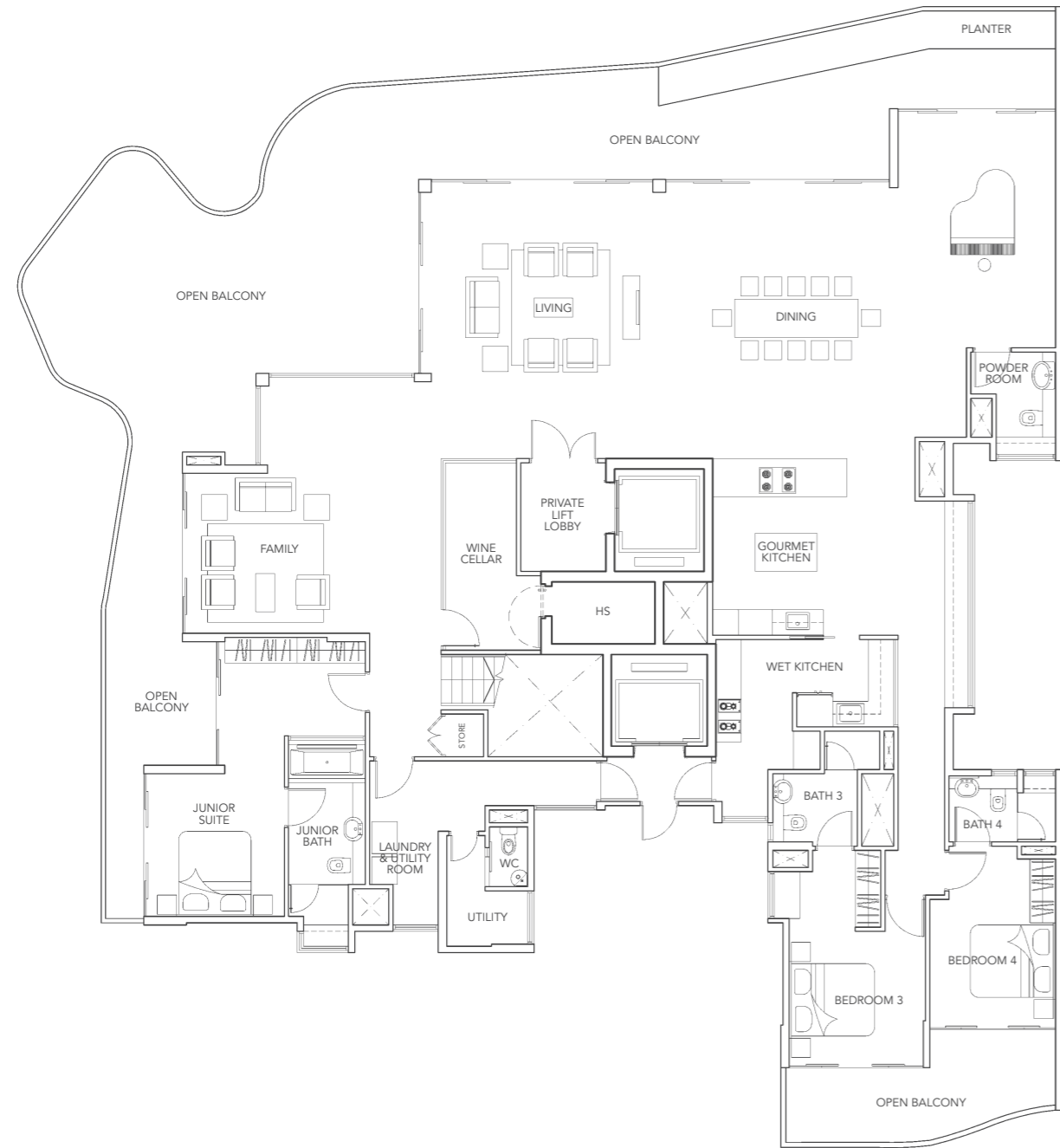
Including open balcony/open terrace/spa pool of 118 sq.m.
55 Cove Drive, #06-13



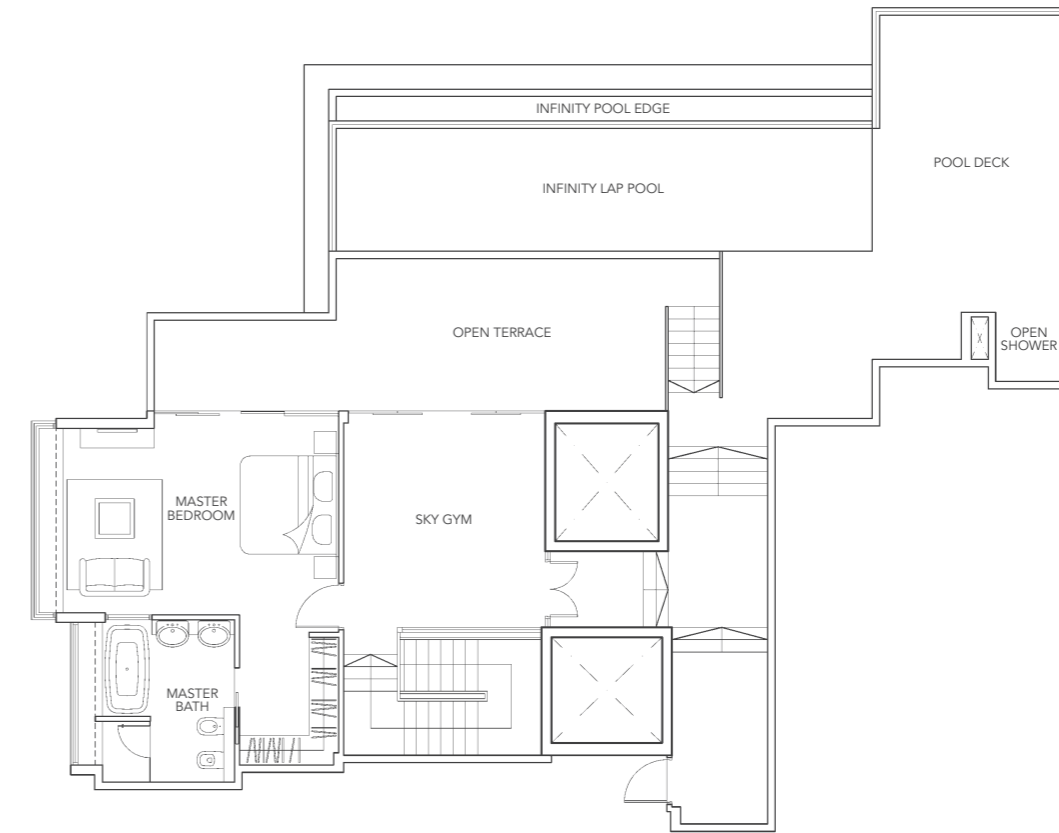
Lower Penthouse



Upper Penthouse



Lower Sky Villa

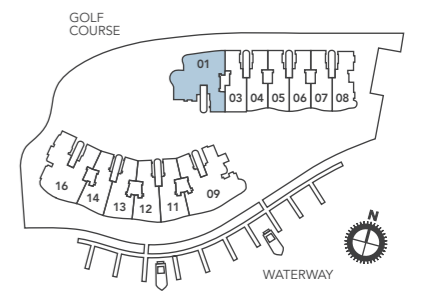


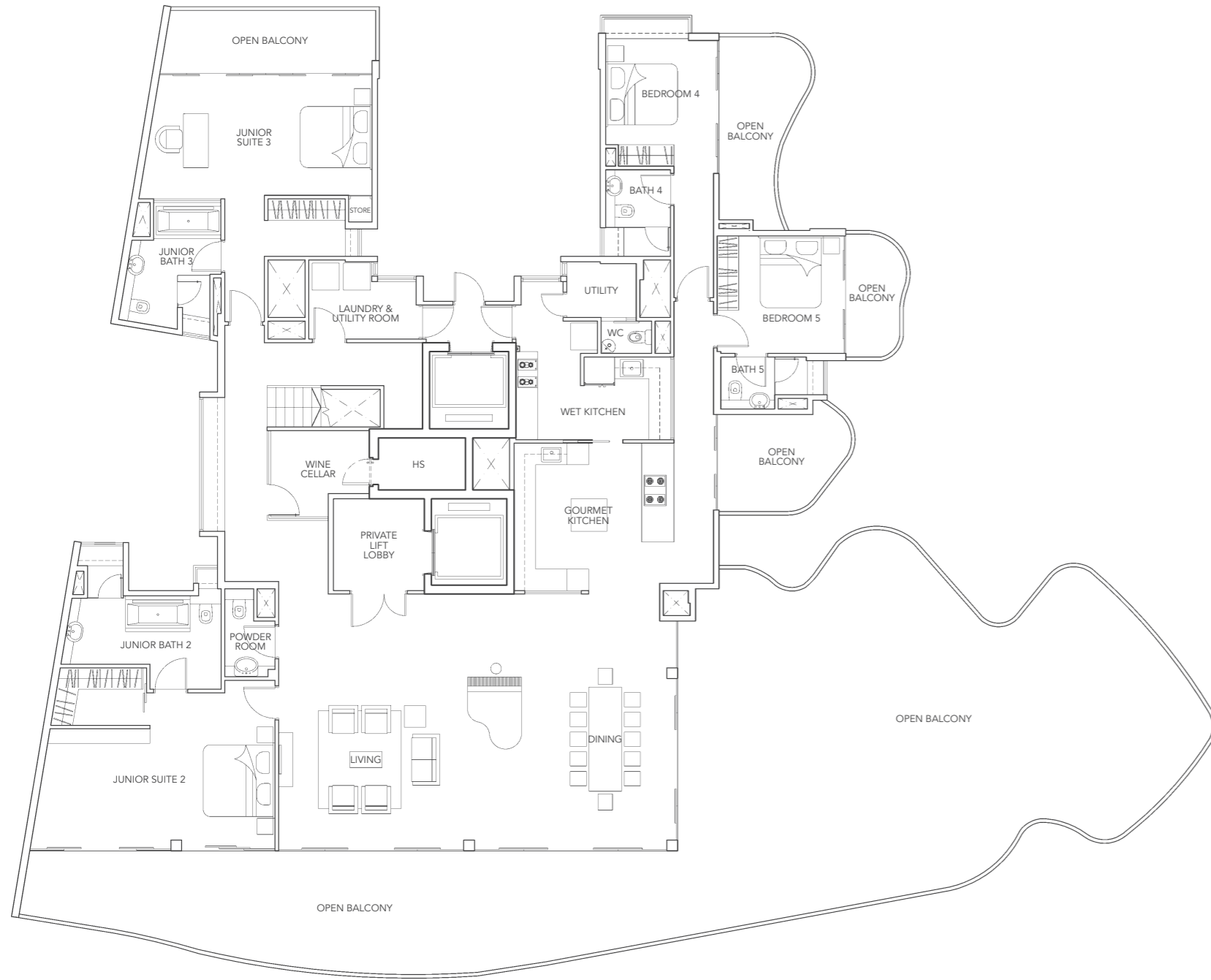
Upper Sky Villa

Type SV1

641 sq.m. / 6,900 sq.ft.

Including open balcony/open terrace/lap pool of 244 sq.m.
51 Cove Drive, #06-01



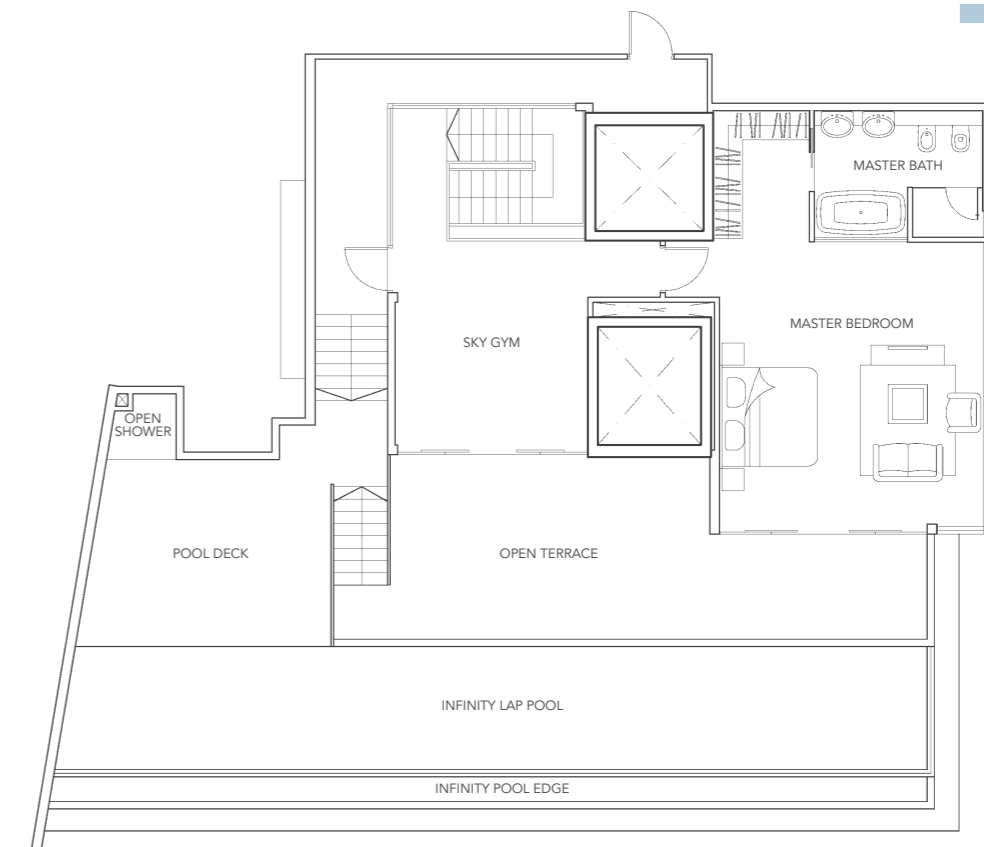
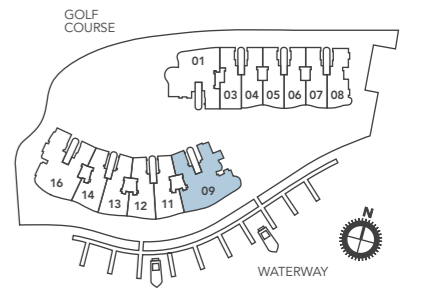


Lower Sky Villa

Type SV2

742 sq.m. / 7,987 sq.ft.

Including open balcony/open terrace/lap pool of 349 sq.m.
55 Cove Drive, #06-09

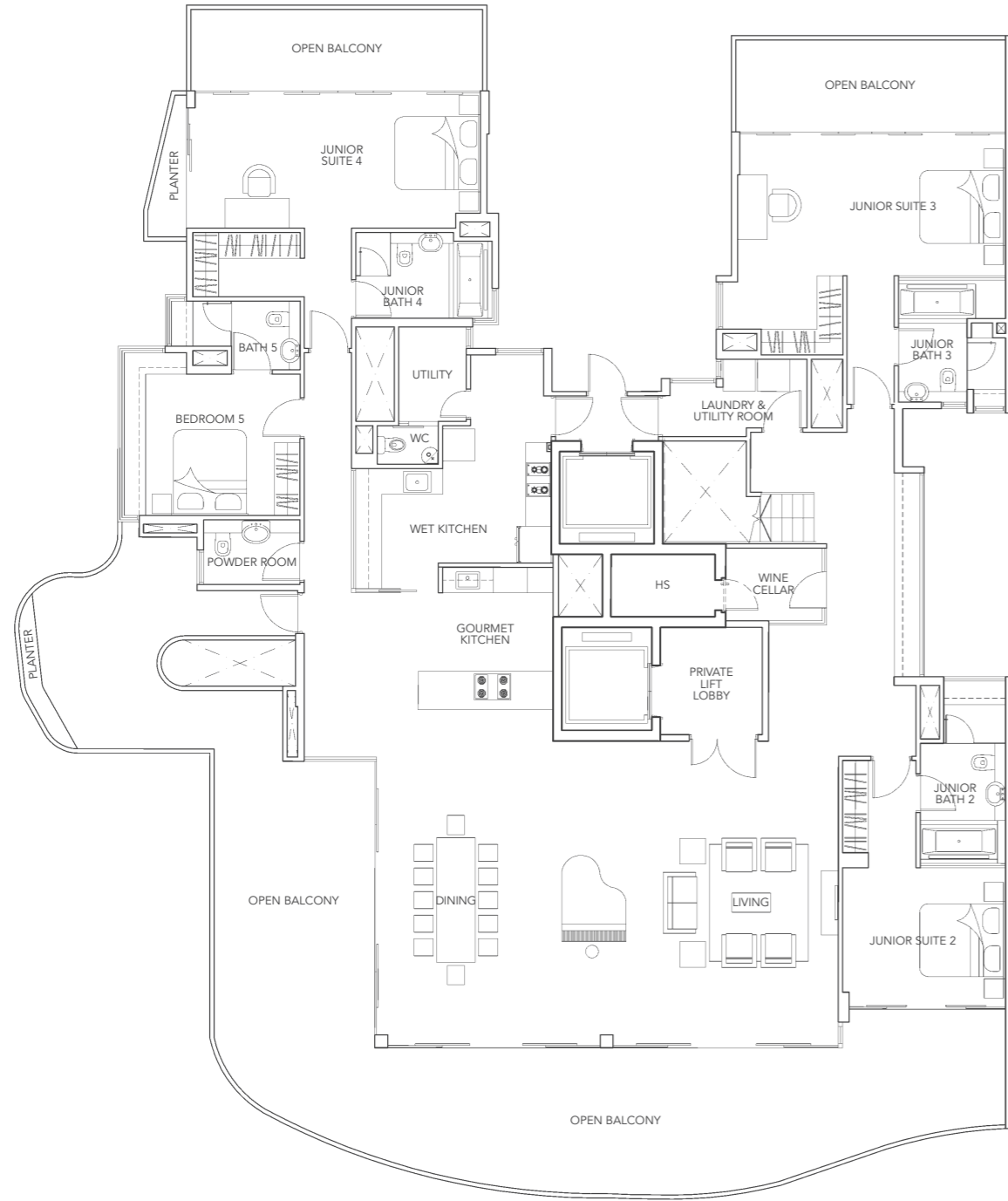
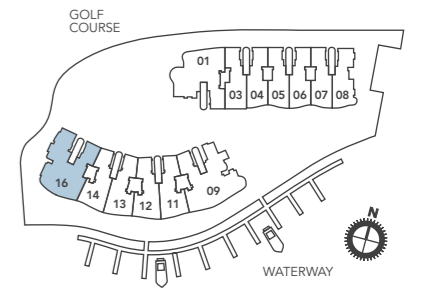


Upper Sky Villa

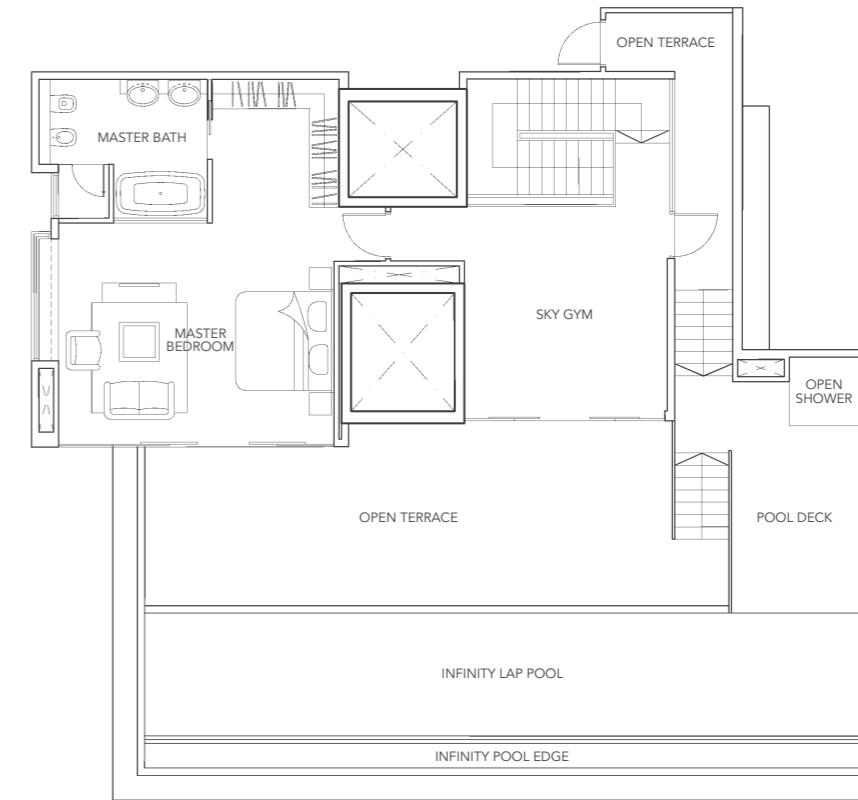
Type SV3

647 sq.m. / 6,964 sq.ft.

Including open balcony/open terrace/lap pool of 247 sq.m.
55 Cove Drive, #06-16



Lower Sky Villa



Upper Sky Villa