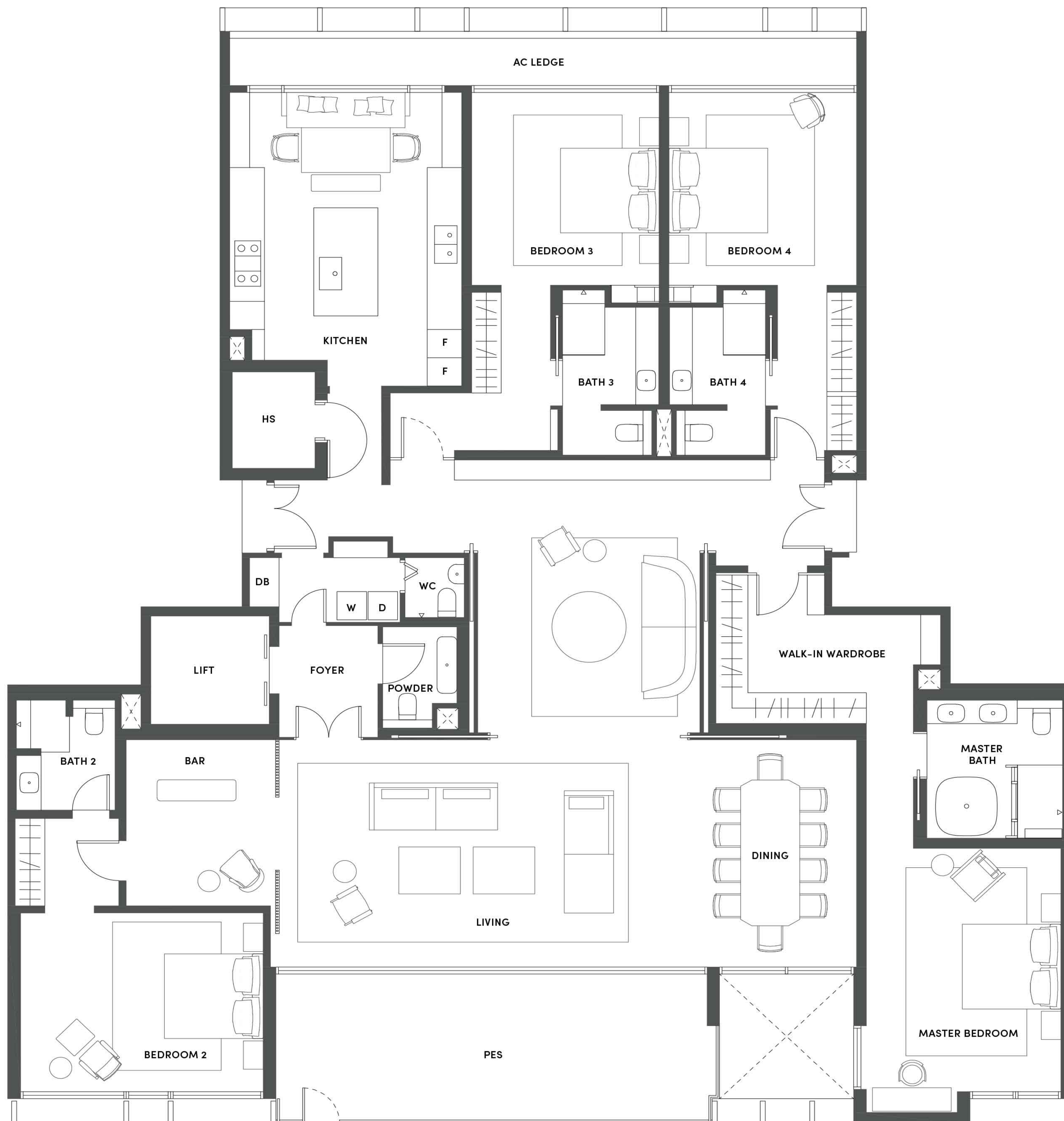
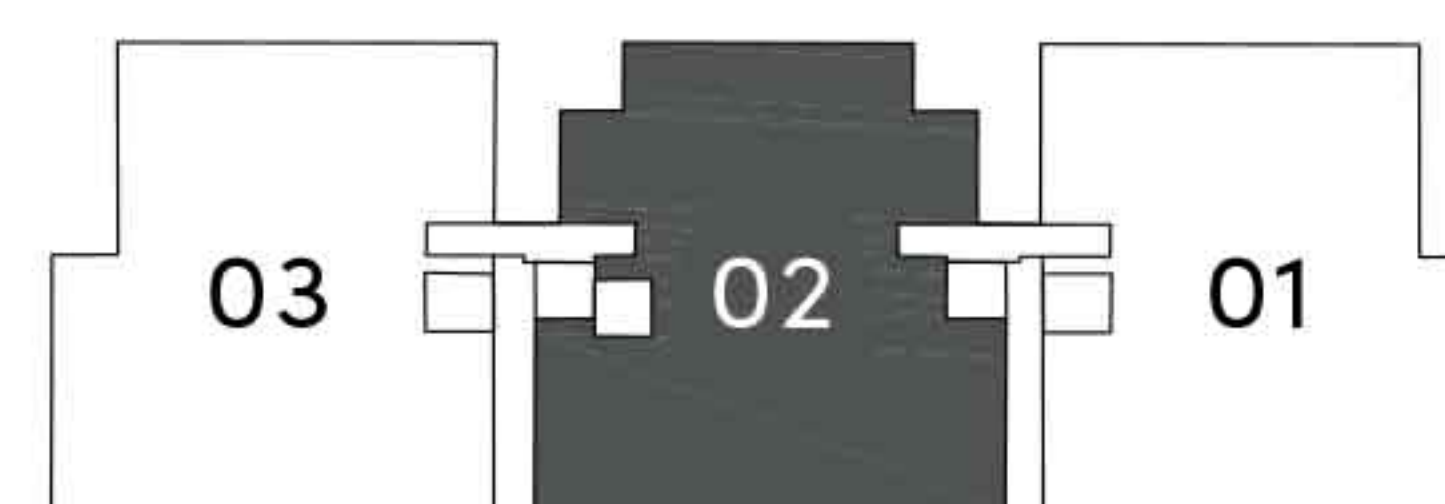


TYPE D2P • 4 BEDROOM

355 m² / 3,821 ft²

Units: #01-02

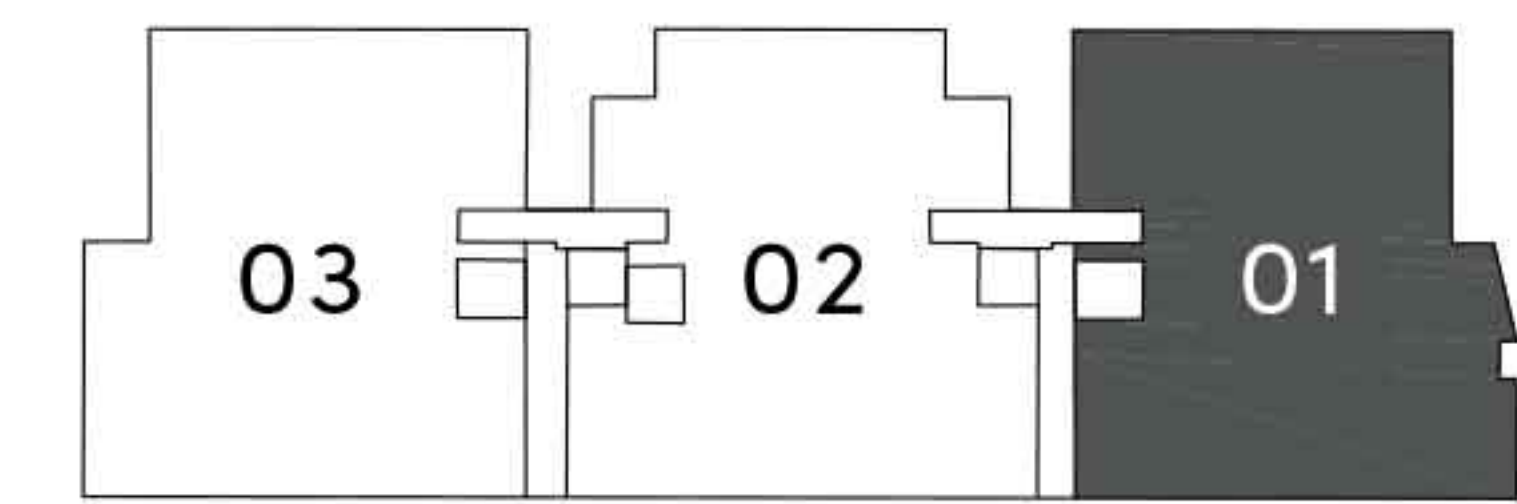


Area includes air-con (A/C) ledge. PES/Balcony and strata void area where applicable. Please refer to the key plan for orientation. The plans are subject to change as may be approved by relevant authorities. All floor plans are approximate measurements only and are subject to final re-survey. The balcony shall not be enclosed.

TYPE D1P • 4 BEDROOM

388 m² / 4,176 ft²

Units: #01-01

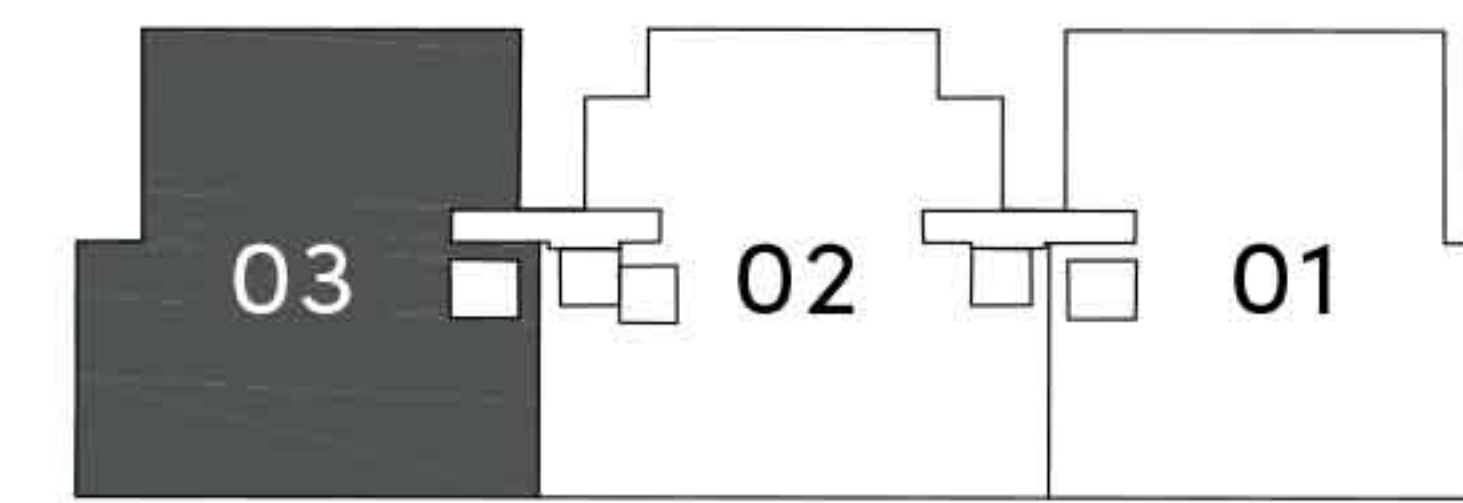


Area includes air-con (A/C) ledge. PES/Balcony and strata void area where applicable. Please refer to the key plan for orientation. The plans are subject to change as may be approved by relevant authorities. All floor plans are approximate measurements only and are subject to final re-survey. The balcony shall not be enclosed.

TYPE D1A • 4 BEDROOM

392 m² / 4,219 ft²

Units: #02-03, #03-03, #04-03, #05-03

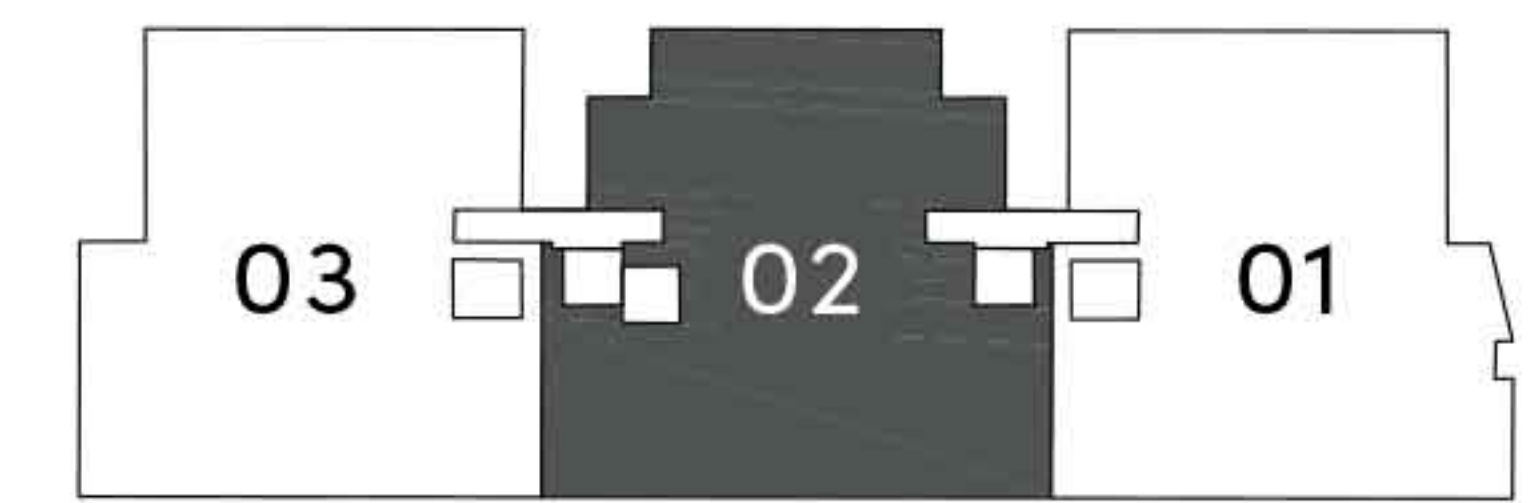


Area includes air-con (A/C) ledge. Balcony and strata void area where applicable. Please refer to the key plan for orientation. The plans are subject to change as may be approved by relevant authorities. All floor plans are approximate measurements only and are subject to final re-survey. The balcony shall not be enclosed.

TYPE D2 • 4 BEDROOM

391 m² / 4,209 ft²

Units: #02-02, #03-02, #04-02, #05-02

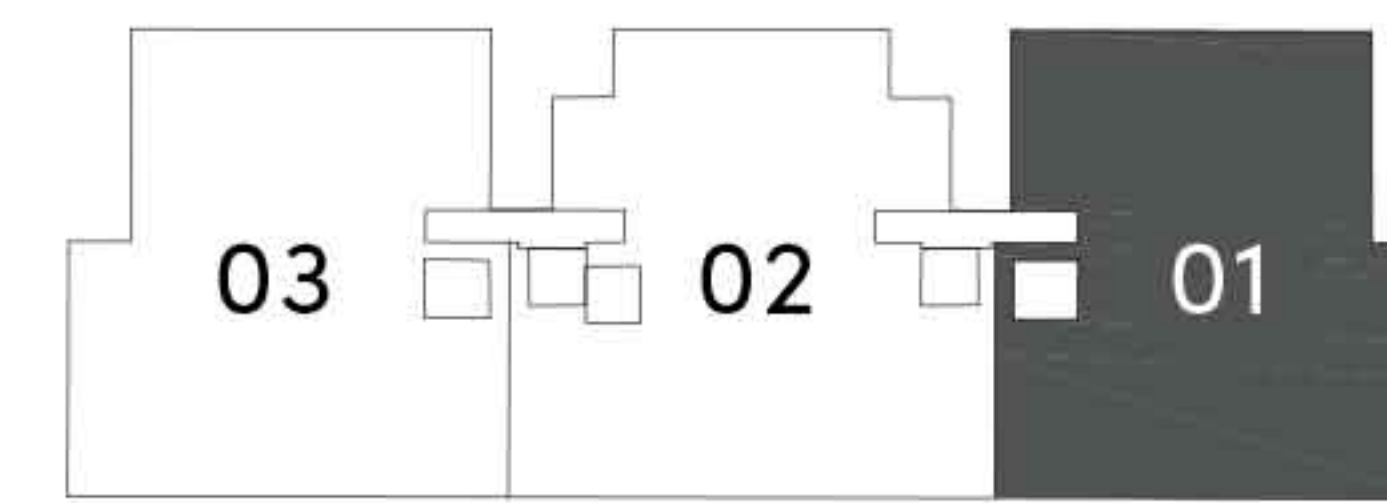


Area includes air-con (A/C) ledge. Balcony and strata void area where applicable. Please refer to the key plan for orientation. The plans are subject to change as may be approved by relevant authorities. All floor plans are approximate measurements only and are subject to final re-survey. The balcony shall not be enclosed.

TYPE D1 • 4 BEDROOM

390 m² / 4,198 ft²

Units: #02-01, #03-01, #04-01, #05-01



Area includes air-con (A/C) ledge. Balcony and strata void area where applicable. Please refer to the key plan for orientation. The plans are subject to change as may be approved by relevant authorities. All floor plans are approximate measurements only and are subject to final re-survey. The balcony shall not be enclosed.