

# 2 BEDROOM

## Type B

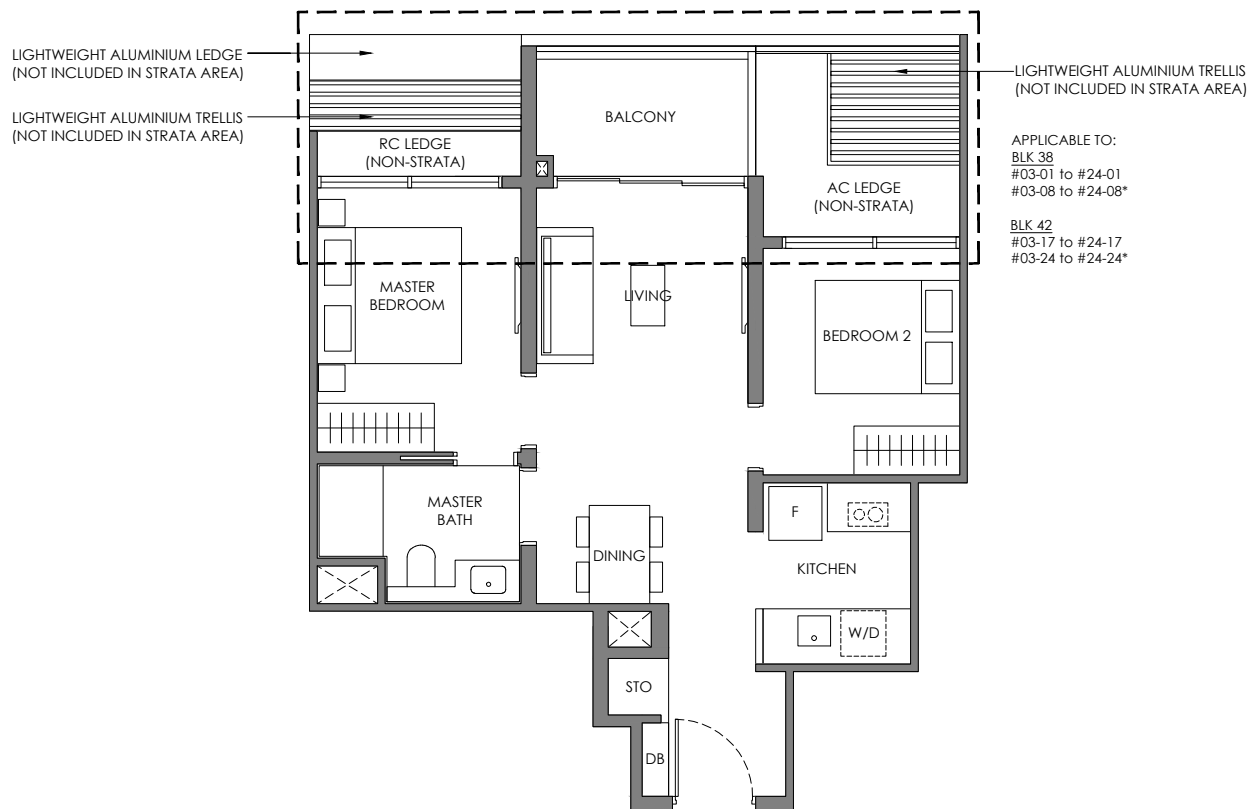
58 sqm / 624 sqft

### BLK 38

#02-01 to #24-01  
#02-08 to #24-08\*

### BLK 42

#02-17 to #24-17  
#02-24 to #24-24\*



APPLICABLE TO:  
BLK 38  
#03-01 to #24-01  
#03-08 to #24-08\*  
BLK 42  
#03-17 to #24-17  
#03-24 to #24-24\*

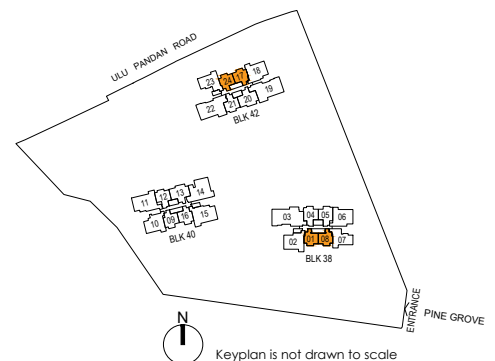


#### Legend (Where Applicable) :

- |                         |                        |                                  |
|-------------------------|------------------------|----------------------------------|
| F - Fridge              | WC - Water Closet      | STO - Store                      |
| W/D - Washer cum Dryer  | HS - Household Shelter | DM - Display Module              |
| DB - Distribution Board | PR - Powder Room       | WPD - Water Purifier & Dispenser |
| * Mirror Image          | WI - Wine Chiller      | DW - Dish Washer                 |

- Wall not allowed to be hacked or altered (including by way of drilling)
- Services void space (excluded from strata area)
- Rainwater downpipe shaft space (excluded from strata area)

DISCLAIMER: Area includes balcony where applicable, and excludes among others, the air-conditioner (AC) ledge and RC - Reinforced Concrete Ledge. Please refer to the key plan for orientation. All floor plans are approximate measurements only and are subject to government re-survey. The Balcony shall not be enclosed unless with the approved balcony screen. The cost of screen and installation shall be borne by the Purchaser.



# 2 BEDROOM PREMIUM

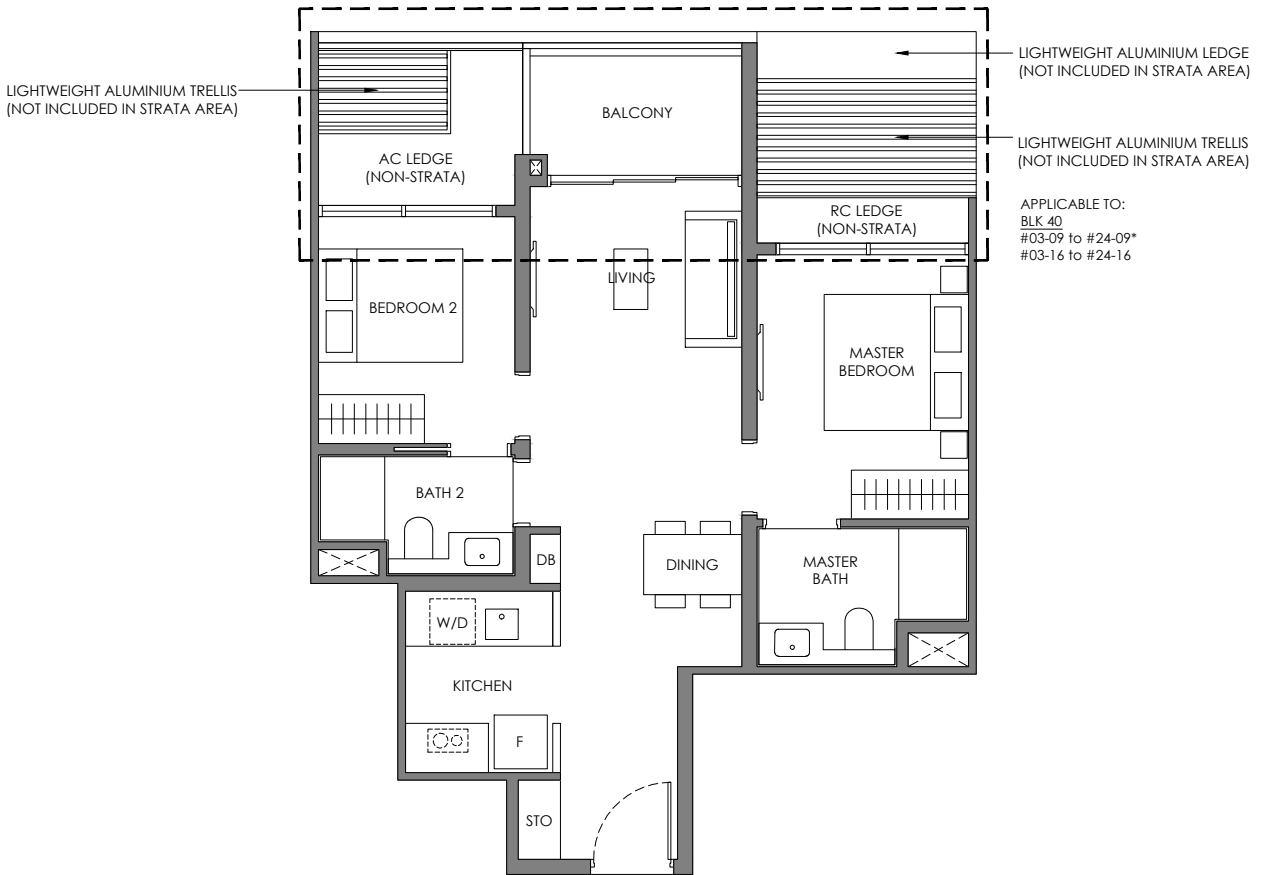
## Type BP-1

65 sqm / 700 sqft

BLK 40

#02-09 to #24-09\*

#02-16 to #24-16

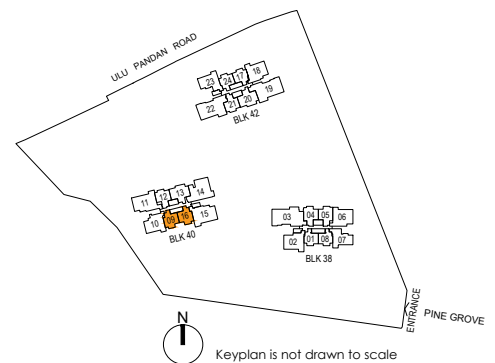


**Legend (Where Applicable) :**

- |                         |                        |                                  |
|-------------------------|------------------------|----------------------------------|
| F - Fridge              | WC - Water Closet      | STO - Store                      |
| W/D - Washer cum Dryer  | HS - Household Shelter | DM - Display Module              |
| DB - Distribution Board | PR - Powder Room       | WPD - Water Purifier & Dispenser |
| * Mirror Image          | WI - Wine Chiller      | DW - Dish Washer                 |

- Wall not allowed to be hacked or altered (including by way of drilling)
- Services void space (excluded from strata area)
- Rainwater downpipe shaft space (excluded from strata area)

DISCLAIMER: Area includes balcony where applicable, and excludes among others, the air-conditioner (AC) ledge and RC - Reinforced Concrete Ledge. Please refer to the key plan for orientation. All floor plans are approximate measurements only and are subject to government re-survey. The Balcony shall not be enclosed unless with the approved balcony screen. The cost of screen and installation shall be borne by the Purchaser.



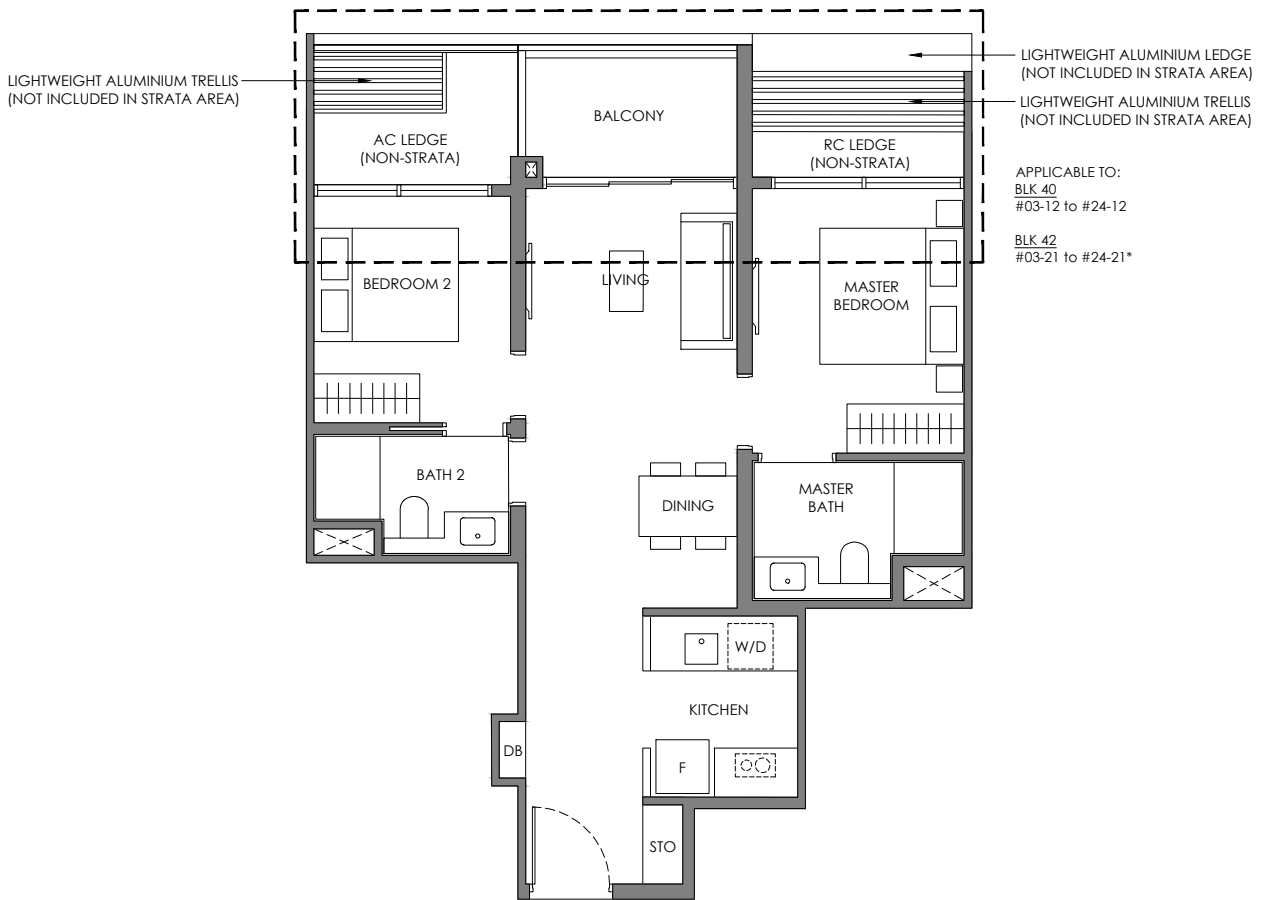
# 2 BEDROOM PREMIUM

## Type BP-2

65 sqm / 700 sqft

BLK 40  
#02-12 to #24-12

BLK 42  
#02-21 to #24-21\*

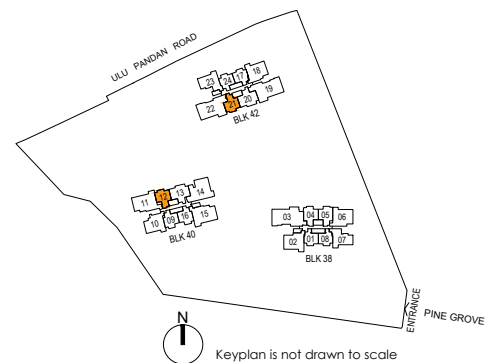


**Legend (Where Applicable) :**

- |                         |                        |                                  |
|-------------------------|------------------------|----------------------------------|
| F - Fridge              | WC - Water Closet      | STO - Store                      |
| W/D - Washer cum Dryer  | HS - Household Shelter | DM - Display Module              |
| DB - Distribution Board | PR - Powder Room       | WPD - Water Purifier & Dispenser |
| * Mirror Image          | WI - Wine Chiller      | DW - Dish Washer                 |

- Wall not allowed to be hacked or altered (including by way of drilling)
- Services void space (excluded from strata area)
- Rainwater downpipe shaft space (excluded from strata area)

DISCLAIMER: Area includes balcony where applicable, and excludes among others, the air-conditioner (AC) ledge and RC - Reinforced Concrete Ledge. Please refer to the key plan for orientation. All floor plans are approximate measurements only and are subject to government re-survey. The Balcony shall not be enclosed unless with the approved balcony screen. The cost of screen and installation shall be borne by the Purchaser.



# 2 BEDROOM + STUDY

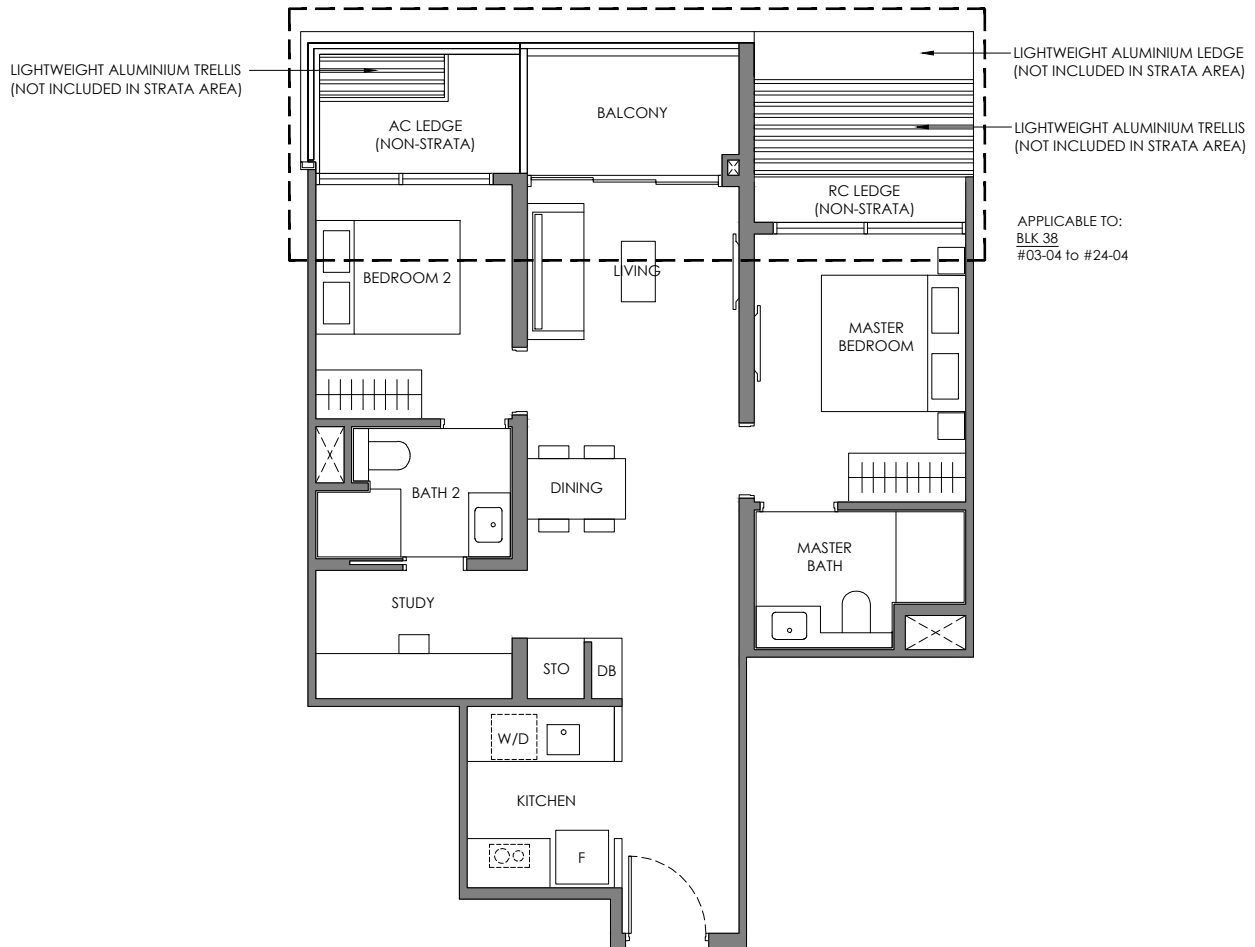
## Type BS

73 sqm / 786 sqft

BLK 38

#02-04 to #24-04

#02-05 to #24-05\*



### Legend (Where Applicable) :

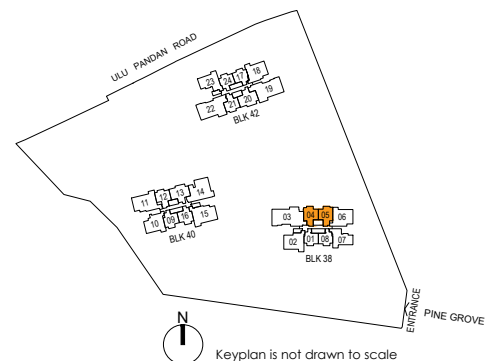
F - Fridge	WC - Water Closet	STO - Store
W/D - Washer cum Dryer	HS - Household Shelter	DM - Display Module
DB - Distribution Board	PR - Powder Room	WPD - Water Purifier & Dispenser
* Mirror Image	WI - Wine Chiller	DW - Dish Washer

Wall not allowed to be hacked or altered (including by way of drilling)

Services void space (excluded from strata area)

Rainwater downpipe shaft space (excluded from strata area)

DISCLAIMER: Area includes balcony where applicable, and excludes among others, the air-conditioner (AC) ledge and RC - Reinforced Concrete Ledge. Please refer to the key plan for orientation. All floor plans are approximate measurements only and are subject to government re-survey. The Balcony shall not be enclosed unless with the approved balcony screen. The cost of screen and installation shall be borne by the Purchaser.



# 3 BEDROOM

## Type C-1

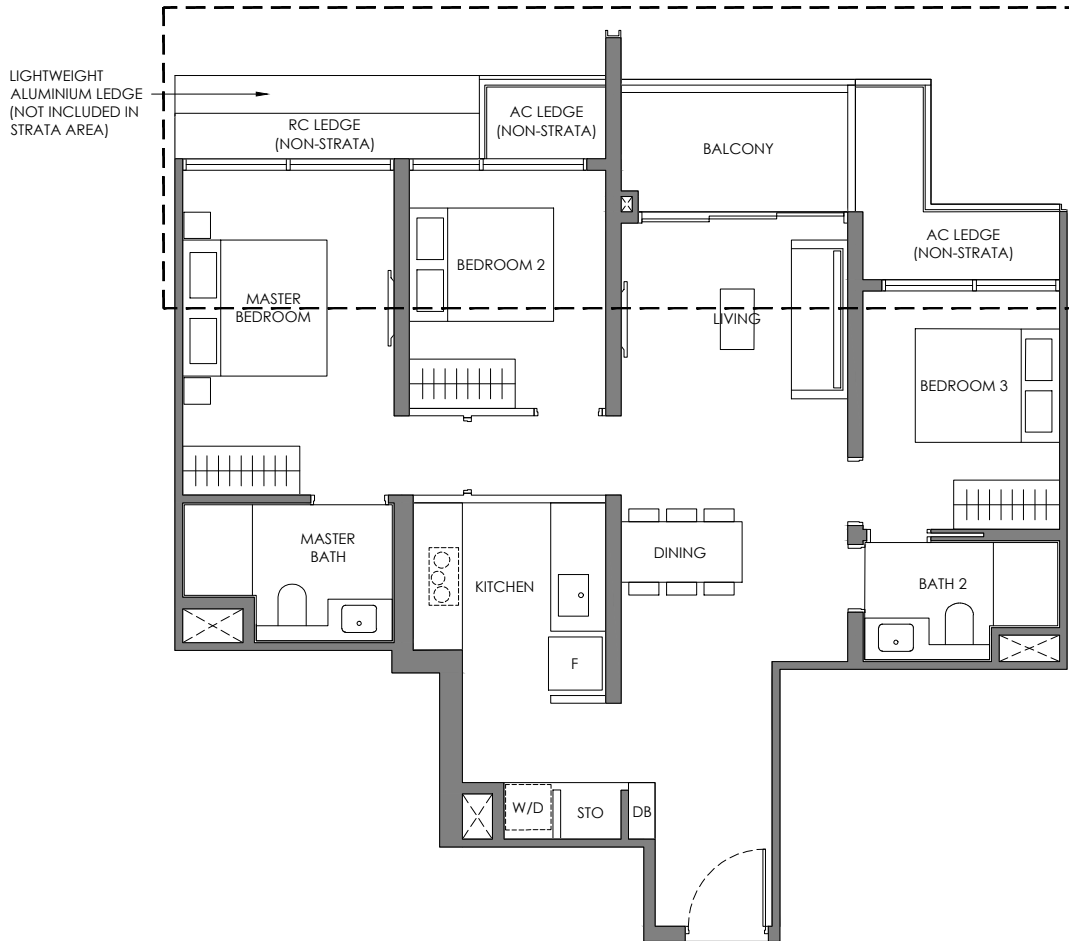
88 sqm / 947 sqft

BLK 40

#02-13 to #24-13

BLK 42

#02-20 to #24-20\*

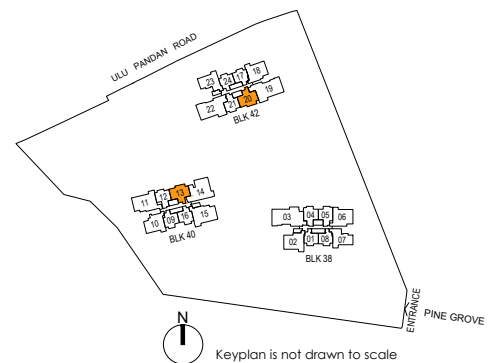


**Legend (Where Applicable) :**

- |                         |                        |                                  |
|-------------------------|------------------------|----------------------------------|
| F - Fridge              | WC - Water Closet      | STO - Store                      |
| W/D - Washer cum Dryer  | HS - Household Shelter | DM - Display Module              |
| DB - Distribution Board | PR - Powder Room       | WPD - Water Purifier & Dispenser |
| * Mirror Image          | WI - Wine Chiller      | DW - Dish Washer                 |

- Wall not allowed to be hacked or altered (including by way of drilling)
- Services void space (excluded from strata area)
- Rainwater downpipe shaft space (excluded from strata area)

DISCLAIMER: Area includes balcony where applicable, and excludes among others, the air-conditioner (AC) ledge and RC - Reinforced Concrete Ledge. Please refer to the key plan for orientation. All floor plans are approximate measurements only and are subject to government re-survey. The Balcony shall not be enclosed unless with the approved balcony screen. The cost of screen and installation shall be borne by the Purchaser.



# 3 BEDROOM

## Type C-2

92 sqm / 990 sqft

BLK 38

#02-07 to #24-07



### Legend (Where Applicable) :

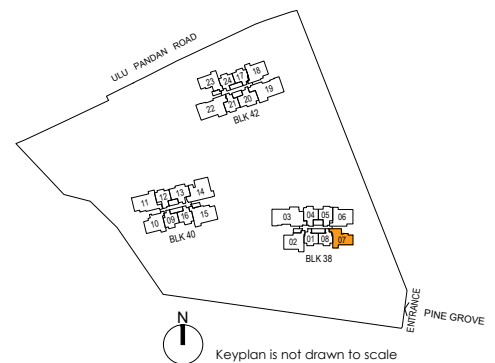
- |                         |                        |                                  |
|-------------------------|------------------------|----------------------------------|
| F - Fridge              | WC - Water Closet      | STO - Store                      |
| W/D - Washer cum Dryer  | HS - Household Shelter | DM - Display Module              |
| DB - Distribution Board | PR - Powder Room       | WPD - Water Purifier & Dispenser |
| * Mirror Image          | WI - Wine Chiller      | DW - Dish Washer                 |

Wall not allowed to be hacked or altered (including by way of drilling)

Services void space (excluded from strata area)

Rainwater downpipe shaft space (excluded from strata area)

DISCLAIMER: Area includes balcony where applicable, and excludes among others, the air-conditioner (AC) ledge and RC - Reinforced Concrete Ledge. Please refer to the key plan for orientation. All floor plans are approximate measurements only and are subject to government re-survey. The Balcony shall not be enclosed unless with the approved balcony screen. The cost of screen and installation shall be borne by the Purchaser.



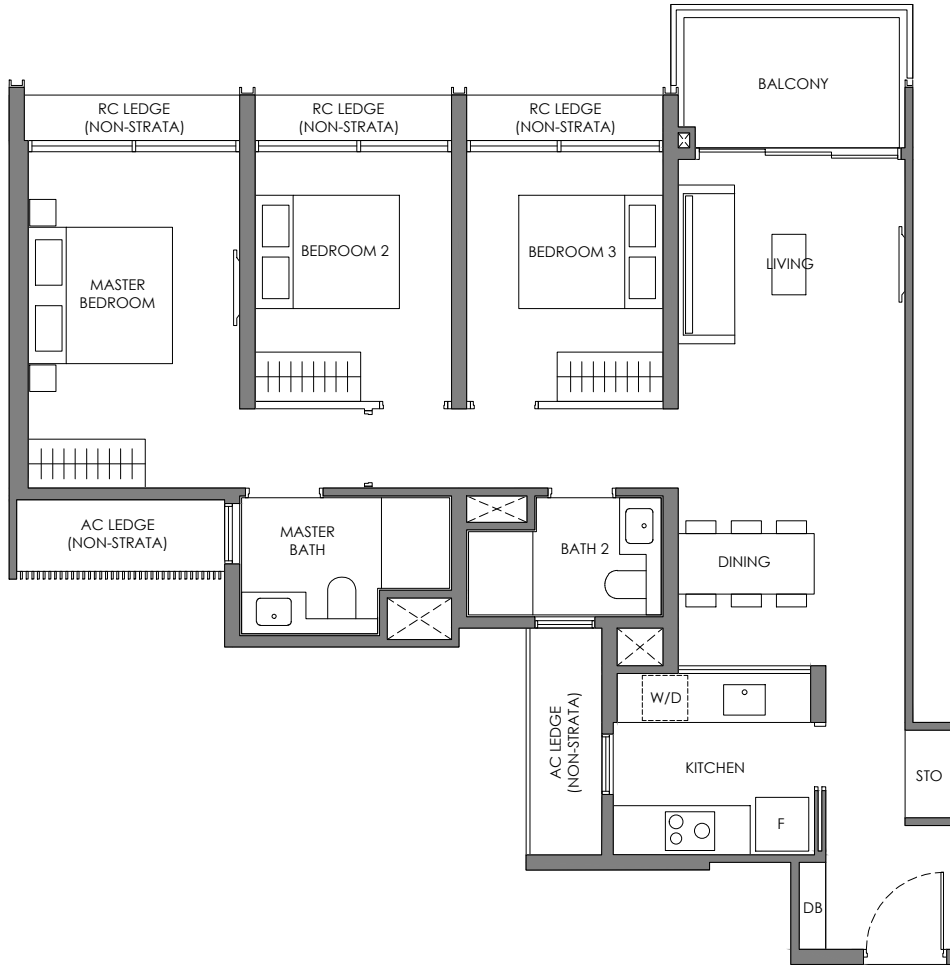
# 3 BEDROOM

## Type C-3

92 sqm / 990 sqft

BLK 42

#02-23 to #24-23

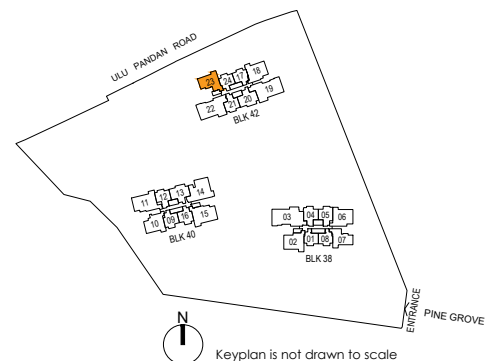


Legend (Where Applicable) :

- F - Fridge
- W/D - Washer cum Dryer
- DB - Distribution Board
- \* Mirror Image
- WC - Water Closet
- HS - Household Shelter
- PR - Powder Room
- WI - Wine Chiller
- STO - Store
- DM - Display Module
- WPD - Water Purifier & Dispenser
- DW - Dish Washer

- Wall not allowed to be hacked or altered (including by way of drilling)
- Services void space (excluded from strata area)
- Rainwater downpipe shaft space (excluded from strata area)

DISCLAIMER: Area includes balcony where applicable, and excludes among others, the air-conditioner (AC) ledge and RC - Reinforced Concrete Ledge. Please refer to the key plan for orientation. All floor plans are approximate measurements only and are subject to government re-survey. The Balcony shall not be enclosed unless with the approved balcony screen. The cost of screen and installation shall be borne by the Purchaser.



# 3 BEDROOM PREMIUM

## Type CP-1

102 sqm / 1098 sqft

BLK 42

#02-18 to #24-18



**Legend (Where Applicable) :**

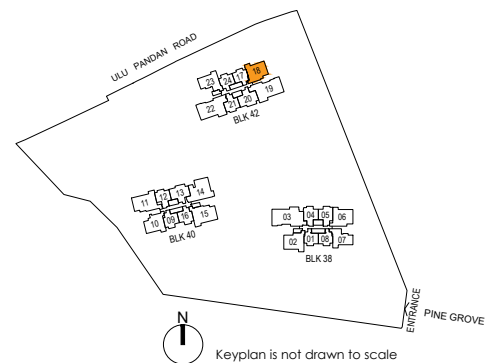
- |                         |                        |                                  |
|-------------------------|------------------------|----------------------------------|
| F - Fridge              | WC - Water Closet      | STO - Store                      |
| W/D - Washer cum Dryer  | HS - Household Shelter | DM - Display Module              |
| DB - Distribution Board | PR - Powder Room       | WPD - Water Purifier & Dispenser |
| * Mirror Image          | WI - Wine Chiller      | DW - Dish Washer                 |

■ Wall not allowed to be hacked or altered (including by way of drilling)

▤ Services void space (excluded from strata area)

⊠ Rainwater downpipe shaft space (excluded from strata area)

DISCLAIMER: Area includes balcony where applicable, and excludes among others, the air-conditioner (AC) ledge and RC - Reinforced Concrete Ledge. Please refer to the key plan for orientation. All floor plans are approximate measurements only and are subject to government re-survey. The Balcony shall not be enclosed unless with the approved balcony screen. The cost of screen and installation shall be borne by the Purchaser.





# 3 BEDROOM PREMIUM

## Type CP-2

103 sqm / 1109 sqft

BLK 38

#02-02 to #24-02

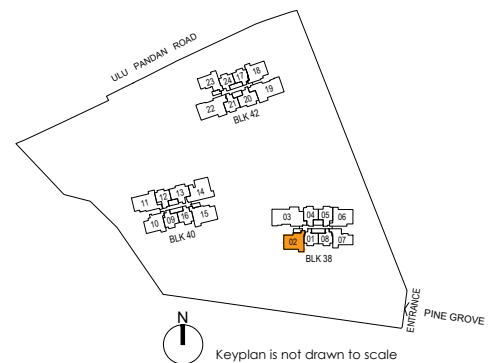


**Legend (Where Applicable) :**

- |                         |                        |                                  |
|-------------------------|------------------------|----------------------------------|
| F - Fridge              | WC - Water Closet      | STO - Store                      |
| W/D - Washer cum Dryer  | HS - Household Shelter | DM - Display Module              |
| DB - Distribution Board | PR - Powder Room       | WPD - Water Purifier & Dispenser |
| * Mirror Image          | WI - Wine Chiller      | DW - Dish Washer                 |

- Wall not allowed to be hacked or altered (including by way of drilling)
- Services void space (excluded from strata area)
- Rainwater downpipe shaft space (excluded from strata area)

DISCLAIMER: Area includes balcony where applicable, and excludes among others, the air-conditioner (AC) ledge and RC - Reinforced Concrete Ledge. Please refer to the key plan for orientation. All floor plans are approximate measurements only and are subject to government re-survey. The Balcony shall not be enclosed unless with the approved balcony screen. The cost of screen and installation shall be borne by the Purchaser.



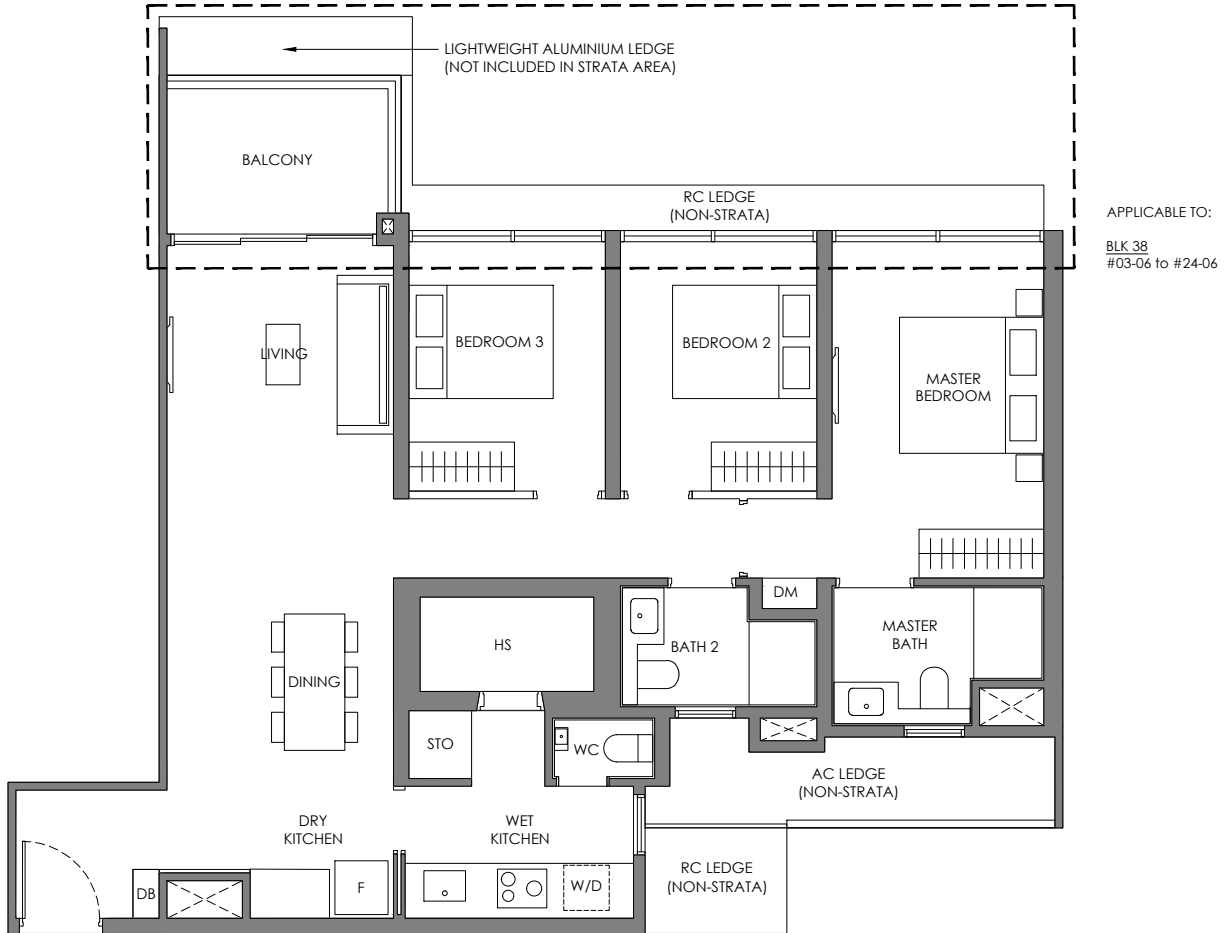
# 3 BEDROOM PREMIUM

## Type CP-3

103 sqm / 1109 sqft

BLK 38

#02-06 to #24-06

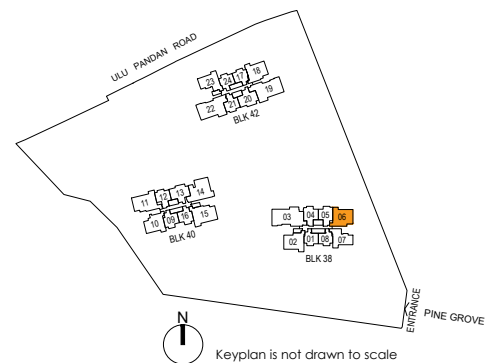


Legend (Where Applicable) :

- |                         |                        |                                  |
|-------------------------|------------------------|----------------------------------|
| F - Fridge              | WC - Water Closet      | STO - Store                      |
| W/D - Washer cum Dryer  | HS - Household Shelter | DM - Display Module              |
| DB - Distribution Board | PR - Powder Room       | WPD - Water Purifier & Dispenser |
| * Mirror Image          | WI - Wine Chiller      | DW - Dish Washer                 |

- Wall not allowed to be hacked or altered (including by way of drilling)
- Services void space (excluded from strata area)
- Rainwater downpipe shaft space (excluded from strata area)

DISCLAIMER: Area includes balcony where applicable, and excludes among others, the air-conditioner (AC) ledge and RC - Reinforced Concrete Ledge. Please refer to the key plan for orientation. All floor plans are approximate measurements only and are subject to government re-survey. The Balcony shall not be enclosed unless with the approved balcony screen. The cost of screen and installation shall be borne by the Purchaser.



# 3 BEDROOM PREMIUM

## Type CP-4

103 sqm / 1109 sqft

BLK 40

#02-10 to #24-10

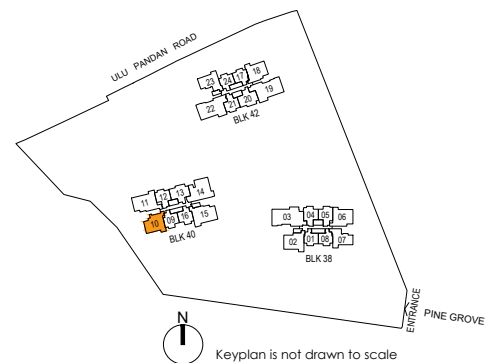


**Legend (Where Applicable) :**

- |                         |                        |                                  |
|-------------------------|------------------------|----------------------------------|
| F - Fridge              | WC - Water Closet      | STO - Store                      |
| W/D - Washer cum Dryer  | HS - Household Shelter | DM - Display Module              |
| DB - Distribution Board | PR - Powder Room       | WPD - Water Purifier & Dispenser |
| * Mirror Image          | WI - Wine Chiller      | DW - Dish Washer                 |

- Wall not allowed to be hacked or altered (including by way of drilling)
- Services void space (excluded from strata area)
- Rainwater downpipe shaft space (excluded from strata area)

DISCLAIMER: Area includes balcony where applicable, and excludes among others, the air-conditioner (AC) ledge and RC - Reinforced Concrete Ledge. Please refer to the key plan for orientation. All floor plans are approximate measurements only and are subject to government re-survey. The Balcony shall not be enclosed unless with the approved balcony screen. The cost of screen and installation shall be borne by the Purchaser.

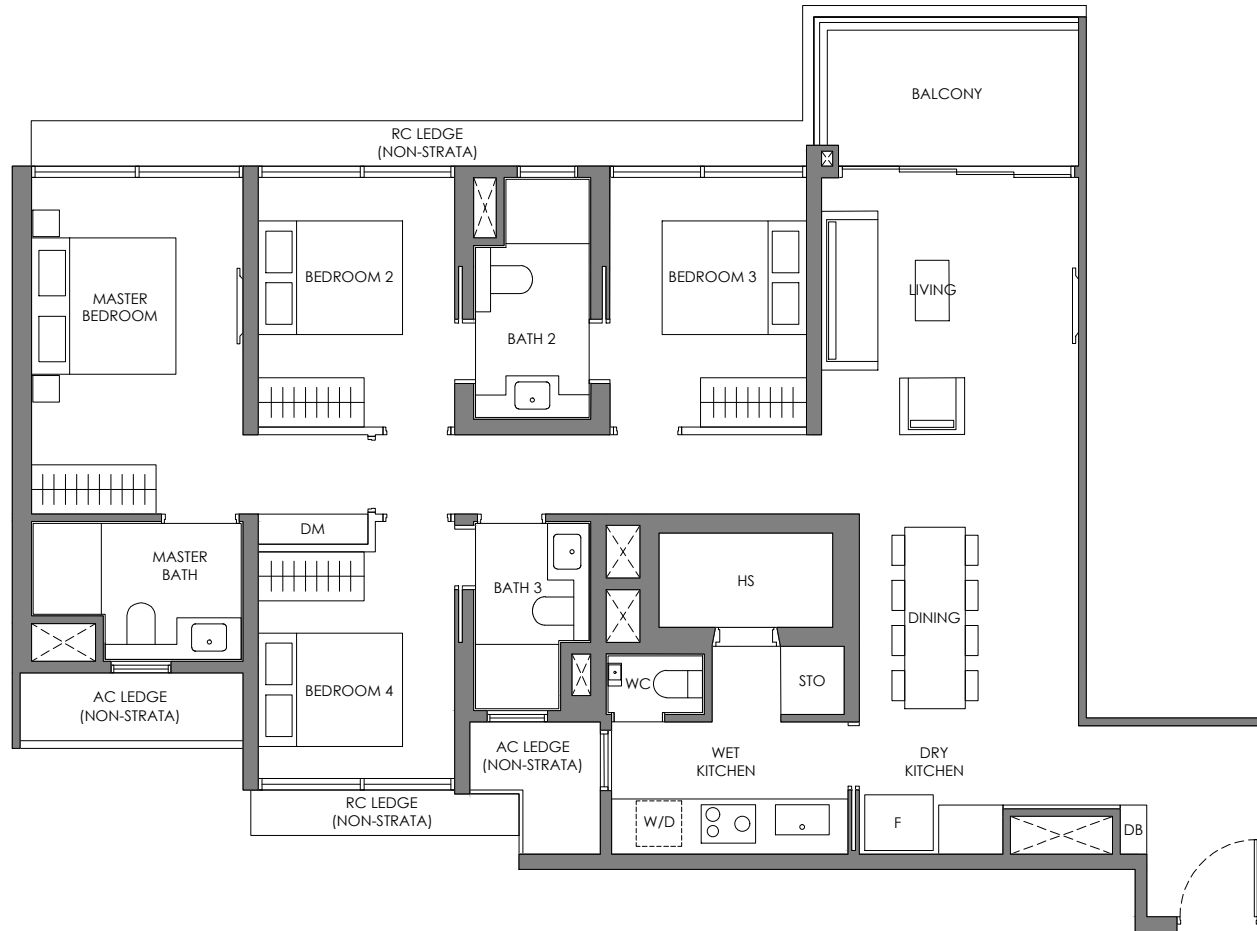


# 4 BEDROOM

## Type D-1

124 sqm / 1335 sqft

BLK 40  
#02-11 to #24-11

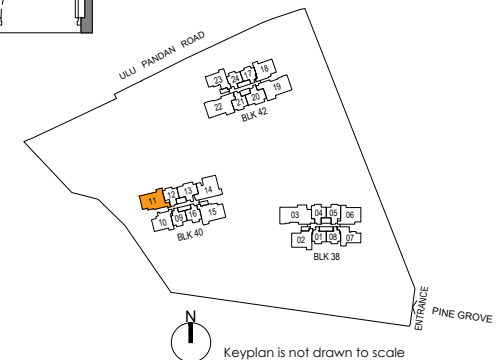


**Legend (Where Applicable) :**

- |                         |                        |                                  |
|-------------------------|------------------------|----------------------------------|
| F - Fridge              | WC - Water Closet      | STO - Store                      |
| W/D - Washer cum Dryer  | HS - Household Shelter | DM - Display Module              |
| DB - Distribution Board | PR - Powder Room       | WPD - Water Purifier & Dispenser |
| * Mirror Image          | WI - Wine Chiller      | DW - Dish Washer                 |

- Wall not allowed to be hacked or altered (including by way of drilling)
- Services void space (excluded from strata area)
- Rainwater downpipe shaft space (excluded from strata area)

DISCLAIMER: Area includes balcony where applicable, and excludes among others, the air-conditioner (AC) ledge and RC - Reinforced Concrete Ledge. Please refer to the key plan for orientation. All floor plans are approximate measurements only and are subject to government re-survey. The Balcony shall not be enclosed unless with the approved balcony screen. The cost of screen and installation shall be borne by the Purchaser.



# 4 BEDROOM

## Type D-2

124 sqm / 1335 sqft

BLK 40  
#02-15 to #24-15

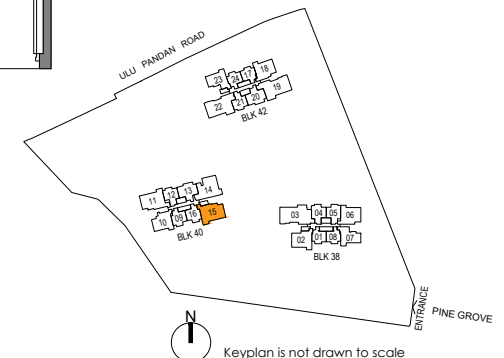


Legend (Where Applicable) :

- |                         |                        |                                  |
|-------------------------|------------------------|----------------------------------|
| F - Fridge              | WC - Water Closet      | STO - Store                      |
| W/D - Washer cum Dryer  | HS - Household Shelter | DM - Display Module              |
| DB - Distribution Board | PR - Powder Room       | WPD - Water Purifier & Dispenser |
| * Mirror Image          | WI - Wine Chiller      | DW - Dish Washer                 |

- Wall not allowed to be hacked or altered (including by way of drilling)
- Services void space (excluded from strata area)
- Rainwater downpipe shaft space (excluded from strata area)

DISCLAIMER: Area includes balcony where applicable, and excludes among others, the air-conditioner (AC) ledge and RC - Reinforced Concrete Ledge. Please refer to the key plan for orientation. All floor plans are approximate measurements only and are subject to government re-survey. The Balcony shall not be enclosed unless with the approved balcony screen. The cost of screen and installation shall be borne by the Purchaser.

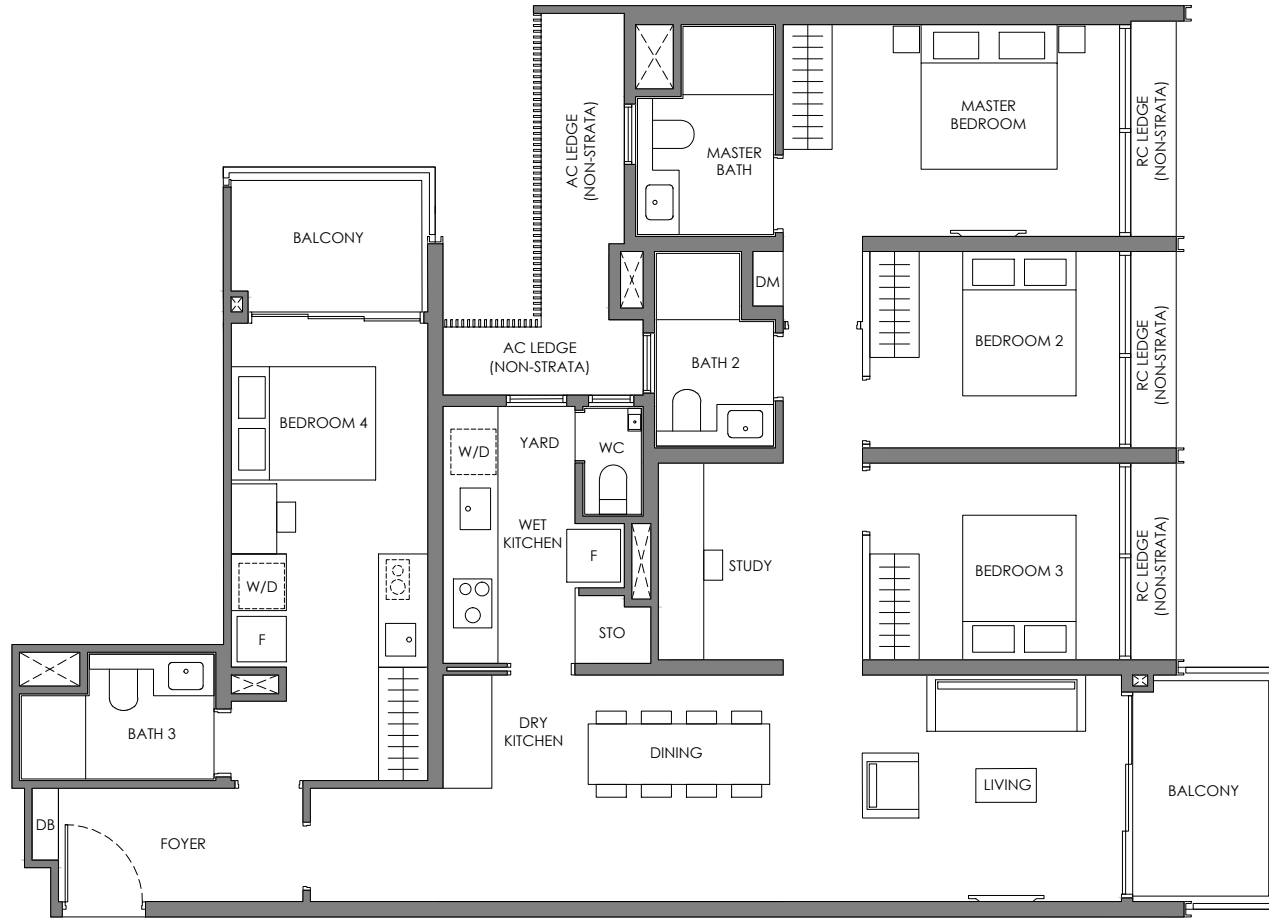


# 4 BEDROOM DUAL-KEY

## Type DK

136 sqm / 1464 sqft

BLK 40  
#02-14 to #24-14

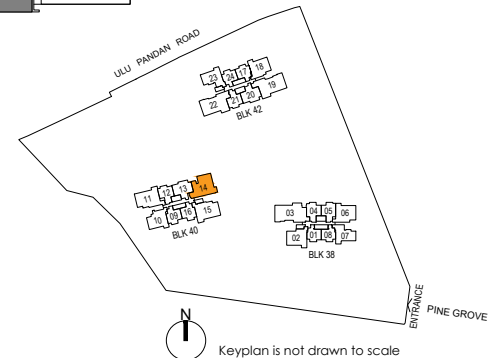


**Legend (Where Applicable) :**

- |                         |                        |                                  |
|-------------------------|------------------------|----------------------------------|
| F - Fridge              | WC - Water Closet      | STO - Store                      |
| W/D - Washer cum Dryer  | HS - Household Shelter | DM - Display Module              |
| DB - Distribution Board | PR - Powder Room       | WPD - Water Purifier & Dispenser |
| * Mirror Image          | WI - Wine Chiller      | DW - Dish Washer                 |

- Wall not allowed to be hacked or altered (including by way of drilling)
- Services void space (excluded from strata area)
- Rainwater downpipe shaft space (excluded from strata area)

DISCLAIMER: Area includes balcony where applicable, and excludes among others, the air-conditioner (AC) ledge and RC - Reinforced Concrete Ledge. Please refer to the key plan for orientation. All floor plans are approximate measurements only and are subject to government re-survey. The Balcony shall not be enclosed unless with the approved balcony screen. The cost of screen and installation shall be borne by the Purchaser.

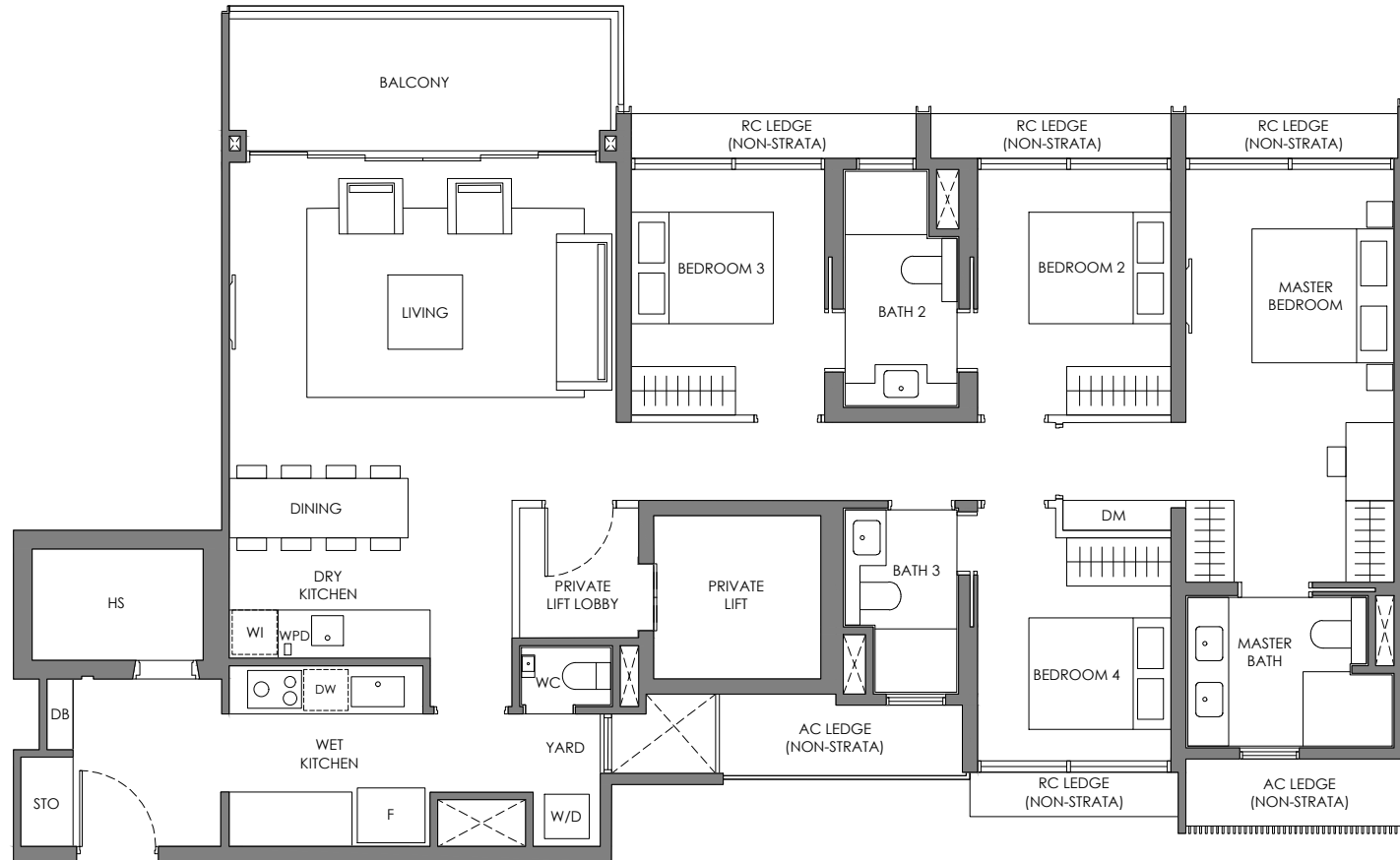


# 4 BEDROOM PREMIUM + PRIVATE LIFT

## Type DP-1

144 sqm / 1550 sqft

BLK 42  
#02-22 to #24-22

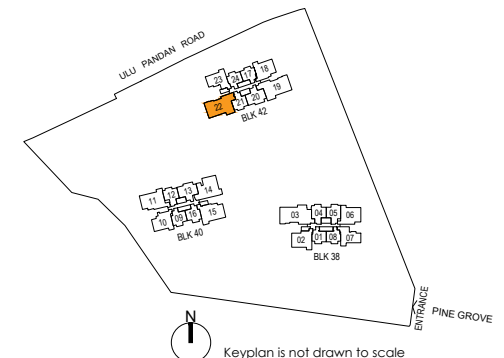


**Legend (Where Applicable) :**

- |                         |                        |                                  |
|-------------------------|------------------------|----------------------------------|
| F - Fridge              | WC - Water Closet      | STO - Store                      |
| W/D - Washer cum Dryer  | HS - Household Shelter | DM - Display Module              |
| DB - Distribution Board | PR - Powder Room       | WPD - Water Purifier & Dispenser |
| * Mirror Image          | WI - Wine Chiller      | DW - Dish Washer                 |

- Wall not allowed to be hacked or altered (including by way of drilling)
- Services void space (excluded from strata area)
- Rainwater downpipe shaft space (excluded from strata area)

DISCLAIMER: Area includes balcony where applicable, and excludes among others, the air-conditioner (AC) ledge and RC - Reinforced Concrete Ledge. Please refer to the key plan for orientation. All floor plans are approximate measurements only and are subject to government re-survey. The Balcony shall not be enclosed unless with the approved balcony screen. The cost of screen and installation shall be borne by the Purchaser.

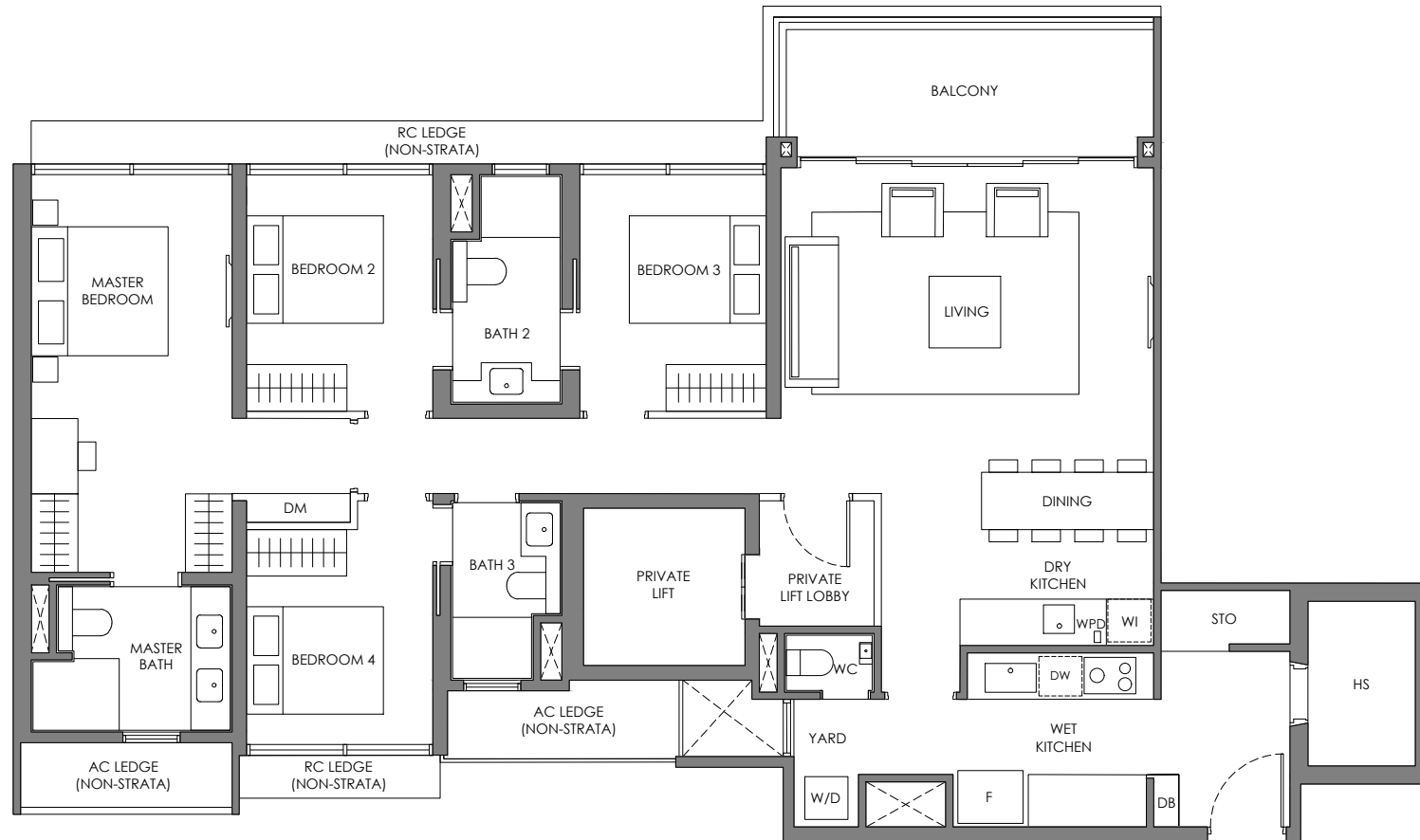


# 4 BEDROOM PREMIUM + PRIVATE LIFT

## Type DP-2

144 sqm / 1550 sqft

BLK 42  
#02-19 to #24-19

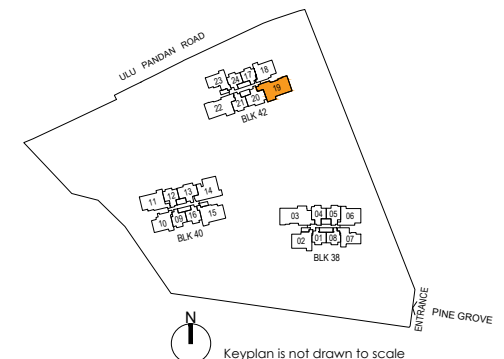


Legend (Where Applicable) :

- |                         |                        |                                  |
|-------------------------|------------------------|----------------------------------|
| F - Fridge              | WC - Water Closet      | STO - Store                      |
| W/D - Washer cum Dryer  | HS - Household Shelter | DM - Display Module              |
| DB - Distribution Board | PR - Powder Room       | WPD - Water Purifier & Dispenser |
| * Mirror Image          | WI - Wine Chiller      | DW - Dish Washer                 |

- Wall not allowed to be hacked or altered (including by way of drilling)
- Services void space (excluded from strata area)
- Rainwater downpipe shaft space (excluded from strata area)

DISCLAIMER: Area includes balcony where applicable, and excludes among others, the air-conditioner (AC) ledge and RC - Reinforced Concrete Ledge. Please refer to the key plan for orientation. All floor plans are approximate measurements only and are subject to government re-survey. The Balcony shall not be enclosed unless with the approved balcony screen. The cost of screen and installation shall be borne by the Purchaser.



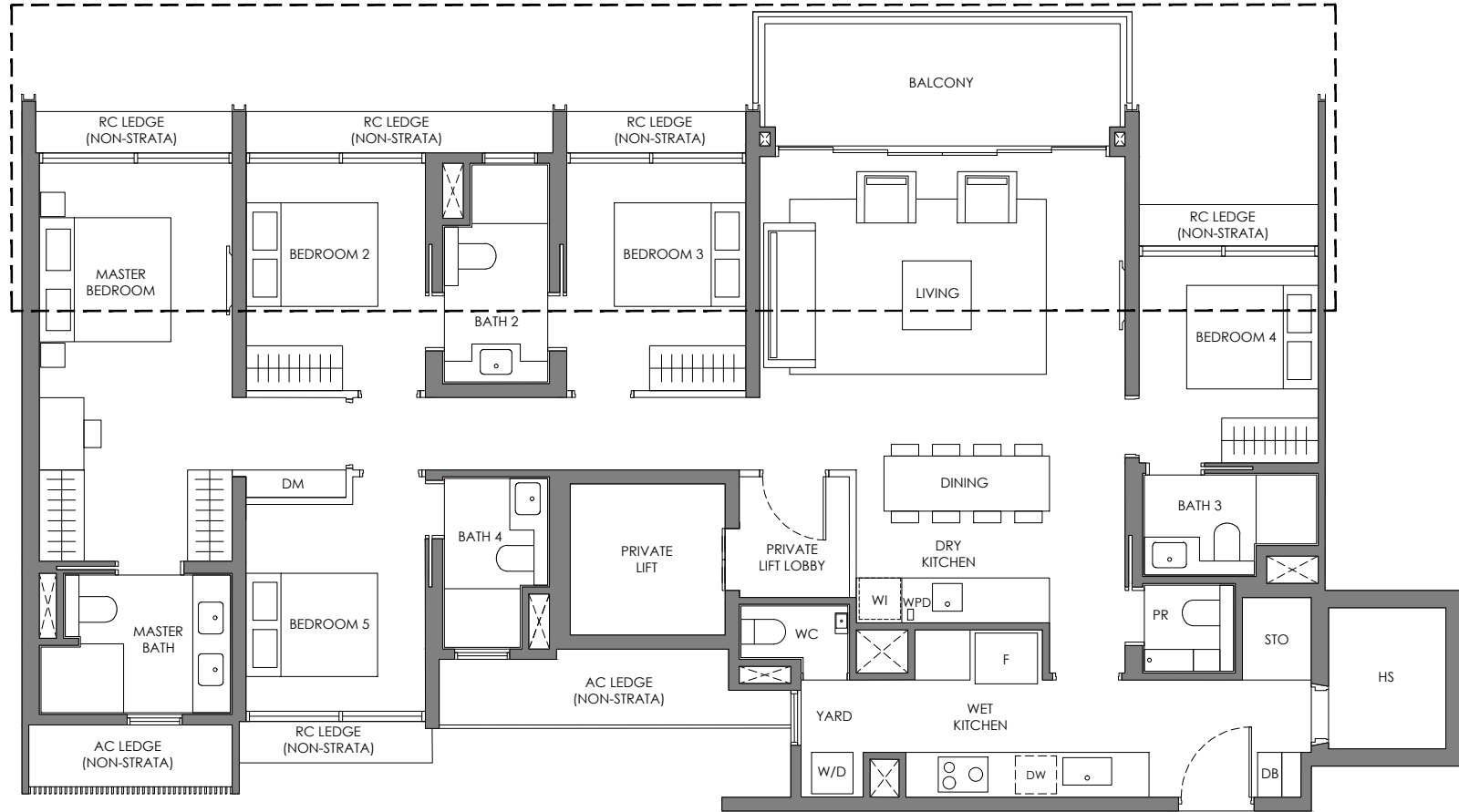


# 5 BEDROOM PREMIUM + PRIVATE LIFT

## Type E

160 sqm / 1722 sqft

BLK 38  
#02-03 to #24-03

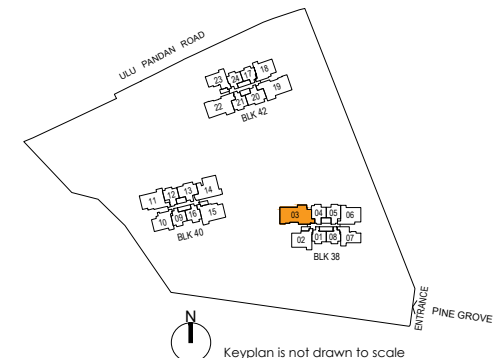


Legend (Where Applicable) :

- |                         |                        |                                  |
|-------------------------|------------------------|----------------------------------|
| F - Fridge              | WC - Water Closet      | STO - Store                      |
| W/D - Washer cum Dryer  | HS - Household Shelter | DM - Display Module              |
| DB - Distribution Board | PR - Powder Room       | WPD - Water Purifier & Dispenser |
| * Mirror Image          | WI - Wine Chiller      | DW - Dish Washer                 |

- Wall not allowed to be hacked or altered (including by way of drilling)
- Services void space (excluded from strata area)
- Rainwater downpipe shaft space (excluded from strata area)

DISCLAIMER: Area includes balcony where applicable, and excludes among others, the air-conditioner (AC) ledge and RC - Reinforced Concrete Ledge. Please refer to the key plan for orientation. All floor plans are approximate measurements only and are subject to government re-survey. The Balcony shall not be enclosed unless with the approved balcony screen. The cost of screen and installation shall be borne by the Purchaser.



Keyplan is not drawn to scale