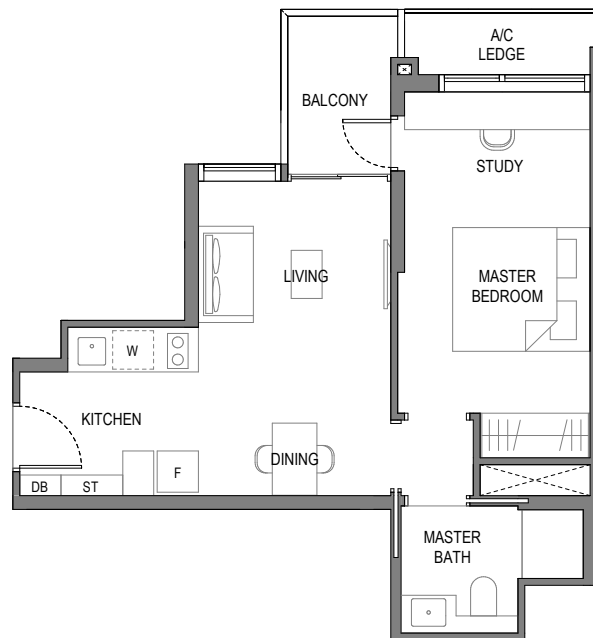


1-BEDROOM + STUDY

Type A1S

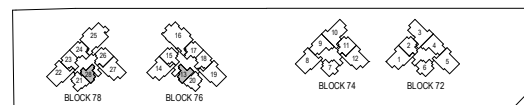
Area: 50 sqm (include 3 sqm A/C Ledge, 4 sqm Balcony)

Unit(s): #03-13* to #19-13*
#03-28 to #19-28



Note: *Mirror Image

Plans are subject to change/amendments as may be required and/or approved by the Developer and/or the relevant authorities and do not form part of any offer or contract. These are not drawn to scale and are for the purpose of visual presentation only. The balcony shall not be enclosed unless with the approved balcony screen. For an illustration of the approved balcony screen, please refer to APPROVED BALCONY SCREEN DESIGN page of this brochure.

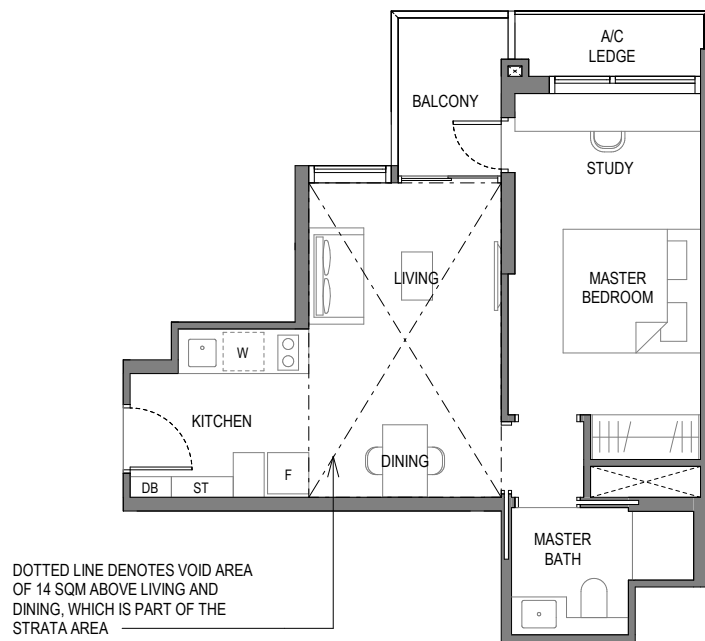


1-BEDROOM + STUDY

Type A1S-T

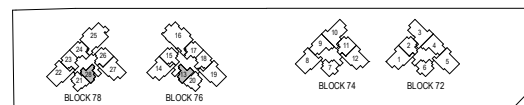
Area: 64 sqm (include 3 sqm A/C Ledge, 4 sqm Balcony, 14 sqm Void)

Unit(s): #20-13*
#20-28



Note: *Mirror Image

Plans are subject to change/amendments as may be required and/or approved by the Developer and/or the relevant authorities and do not form part of any offer or contract. These are not drawn to scale and are for the purpose of visual presentation only. The balcony shall not be enclosed unless with the approved balcony screen. For an illustration of the approved balcony screen, please refer to APPROVED BALCONY SCREEN DESIGN page of this brochure.

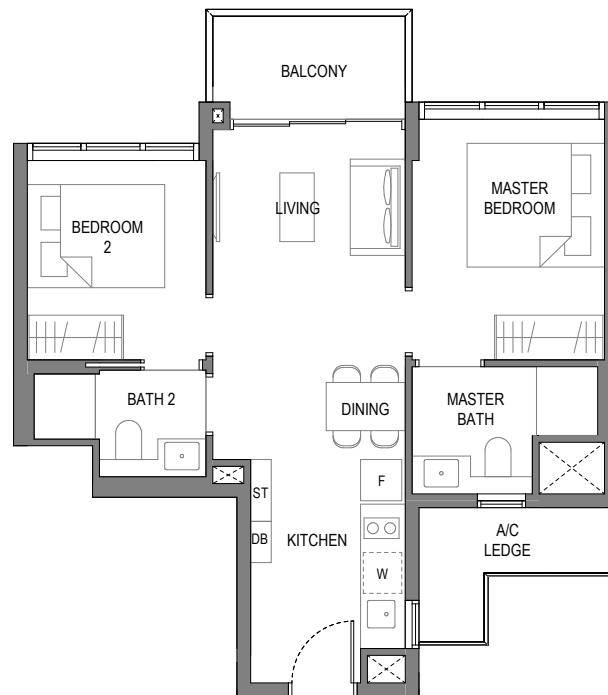


2-BEDROOM DELUXE

Type B1

Area: 60 sqm (include 4 sqm A/C Ledge, 5 sqm Balcony)

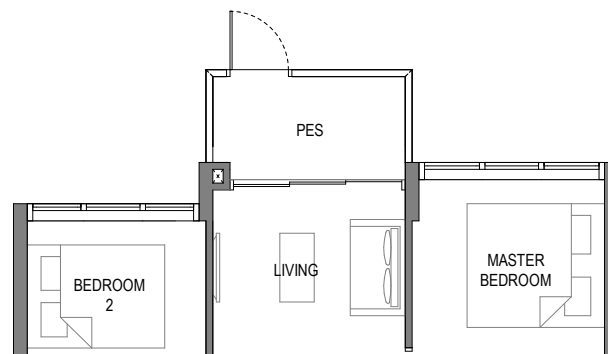
Unit(s): #02-06* to #11-06*
#02-07 to #11-07



Type B1-P

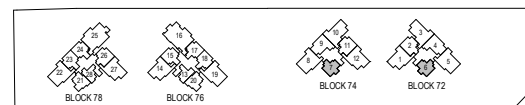
Area: 60 sqm (include 4 sqm A/C Ledge, 5 sqm PES)

Unit(s): #01-06*
#01-07



Note: *Mirror Image

Plans are subject to change/amendments as may be required and/or approved by the Developer and/or the relevant authorities and do not form part of any offer or contract. These are not drawn to scale and are for the purpose of visual presentation only. The balcony shall not be enclosed unless with the approved balcony screen. For an illustration of the approved balcony screen, please refer to APPROVED BALCONY SCREEN DESIGN page of this brochure.

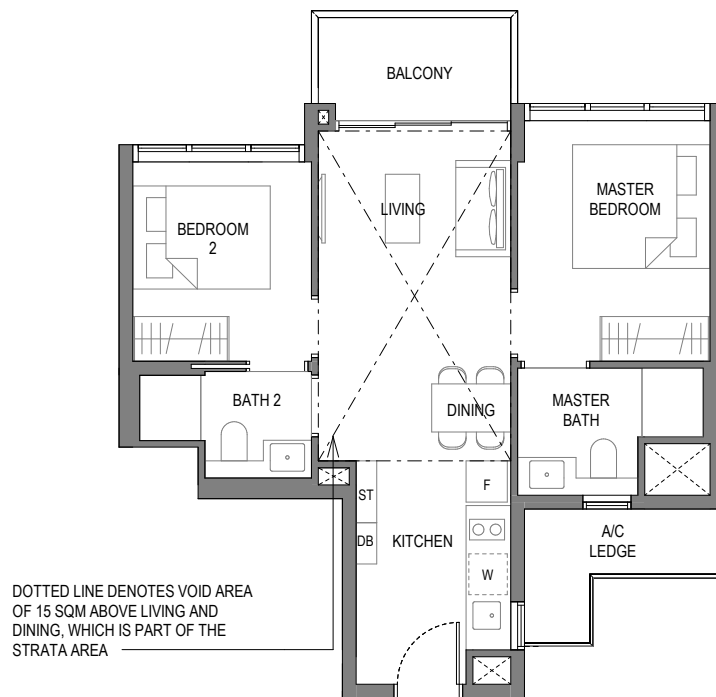


2-BEDROOM DELUXE

Type B1-T

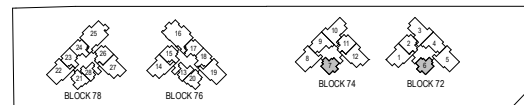
Area: 75 sqm (include 4 sqm A/C Ledge, 5 sqm Balcony, 15 sqm Void)

Unit(s): #12-06*
#12-07



Note: *Mirror Image

Plans are subject to change/amendments as may be required and/or approved by the Developer and/or the relevant authorities and do not form part of any offer or contract. These are not drawn to scale and are for the purpose of visual presentation only. The balcony shall not be enclosed unless with the approved balcony screen. For an illustration of the approved balcony screen, please refer to APPROVED BALCONY SCREEN DESIGN page of this brochure.

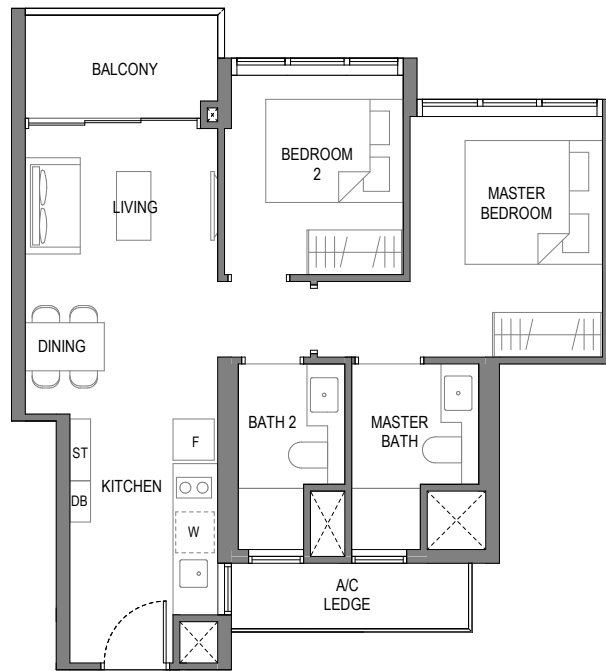


2-BEDROOM DELUXE

Type B2

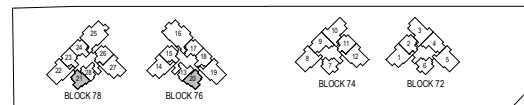
Area: 62 sqm (include 4 sqm A/C Ledge, 5 sqm Balcony)

Unit(s): #03-20* to #19-20*
#03-21 to #19-21



Note: *Mirror Image

Plans are subject to change/amendments as may be required and/or approved by the Developer and/or the relevant authorities and do not form part of any offer or contract. These are not drawn to scale and are for the purpose of visual presentation only. The balcony shall not be enclosed unless with the approved balcony screen. For an illustration of the approved balcony screen, please refer to APPROVED BALCONY SCREEN DESIGN page of this brochure.

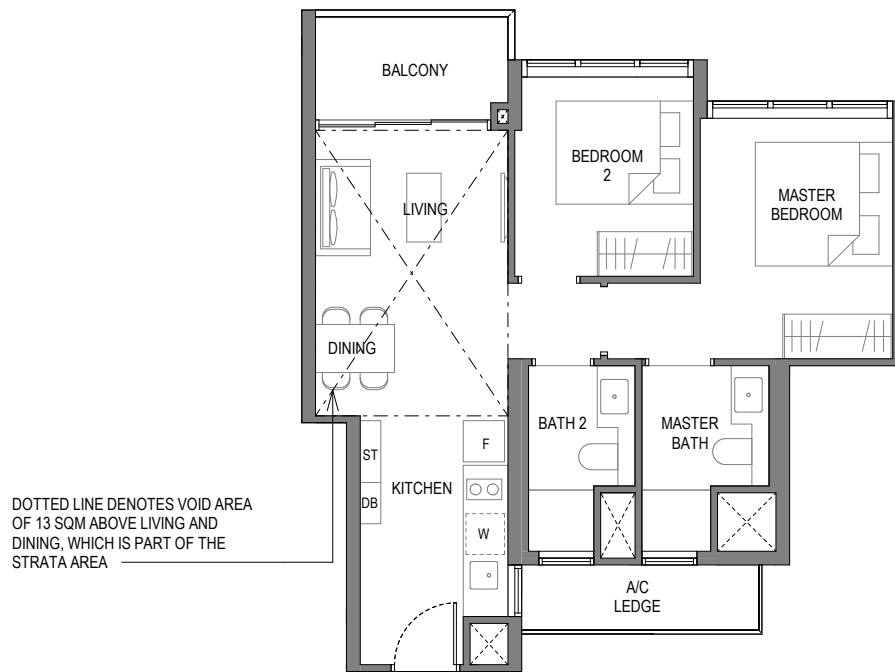


2-BEDROOM DELUXE

Type B2-T

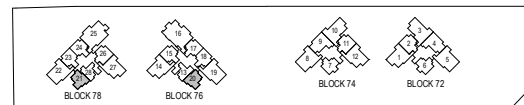
Area: 75 sqm (include 4 sqm A/C Ledge, 5 sqm Balcony, 13 sqm Void)

Unit(s): #20-20*
#20-21



Note: *Mirror Image

Plans are subject to change/amendments as may be required and/or approved by the Developer and/or the relevant authorities and do not form part of any offer or contract. These are not drawn to scale and are for the purpose of visual presentation only. The balcony shall not be enclosed unless with the approved balcony screen. For an illustration of the approved balcony screen, please refer to APPROVED BALCONY SCREEN DESIGN page of this brochure.

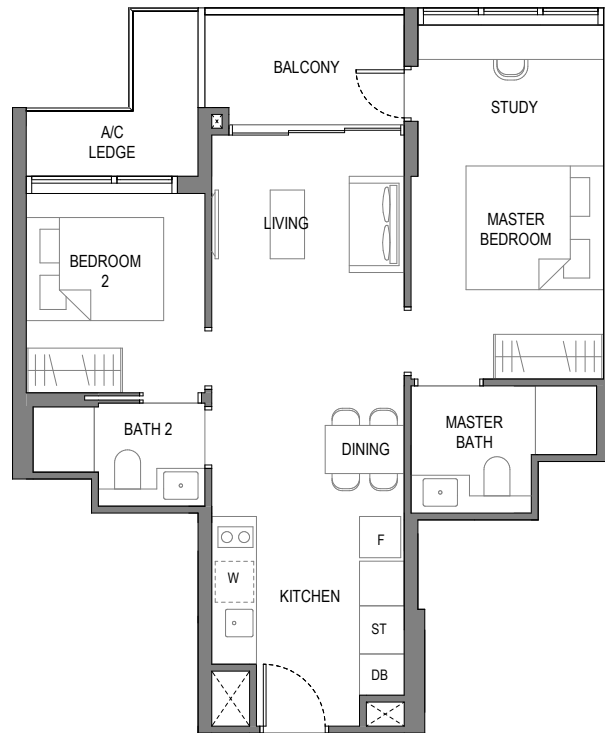


2-BEDROOM DELUXE + STUDY

Type B3S

Area: 68 sqm (include 4 sqm A/C Ledge, 5 sqm Balcony)

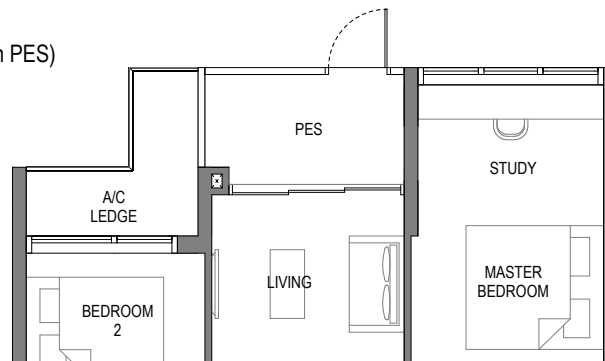
- Unit(s): #02-02* to #10-02*
 #02-11 to #10-11
 #02-17 to #18-17
 #02-18* to #19-18*
 #02-23 to #19-23
 #02-24* to #18-24*



Type B3S-P

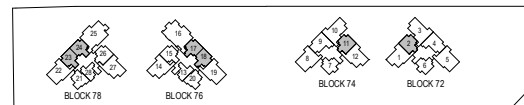
Area: 68 sqm (include 4 sqm A/C Ledge, 5 sqm PES)

- Unit(s): #01-02*
 #01-11
 #01-17
 #01-18*
 #01-23
 #01-24*



Note: *Mirror Image

Plans are subject to change/amendments as may be required and/or approved by the Developer and/or the relevant authorities and do not form part of any offer or contract. These are not drawn to scale and are for the purpose of visual presentation only. The balcony shall not be enclosed unless with the approved balcony screen. For an illustration of the approved balcony screen, please refer to APPROVED BALCONY SCREEN DESIGN page of this brochure.

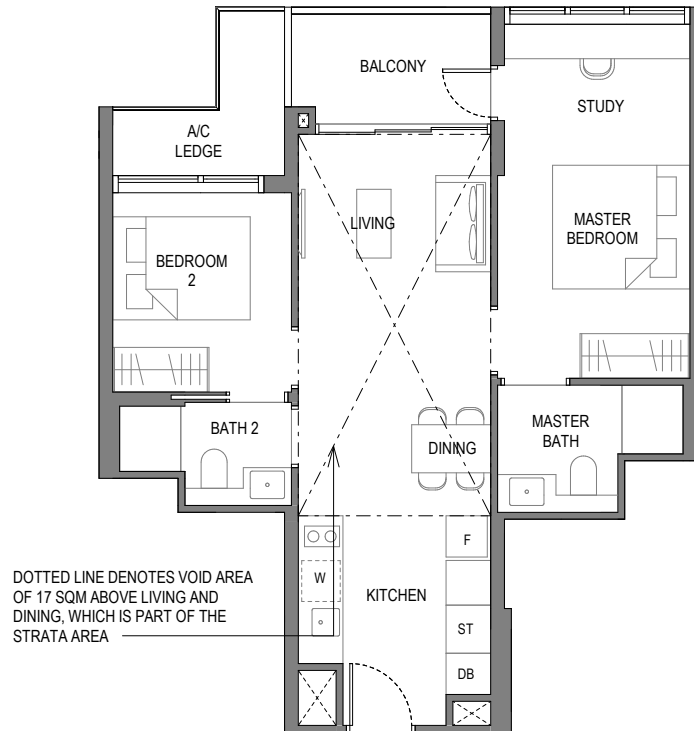


2-BEDROOM DELUXE + STUDY

Type B3S-T

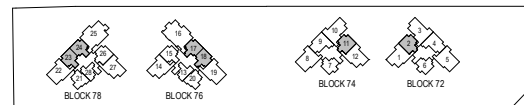
Area: 85 sqm (include 4 sqm A/C Ledge, 5 sqm Balcony, 17 sqm Void)

- Unit(s): #11-02*
#11-11
#19-17
#20-18*
#20-23
#19-24*



Note: *Mirror Image

Plans are subject to change/amendments as may be required and/or approved by the Developer and/or the relevant authorities and do not form part of any offer or contract. These are not drawn to scale and are for the purpose of visual presentation only. The balcony shall not be enclosed unless with the approved balcony screen. For an illustration of the approved balcony screen, please refer to APPROVED BALCONY SCREEN DESIGN page of this brochure.

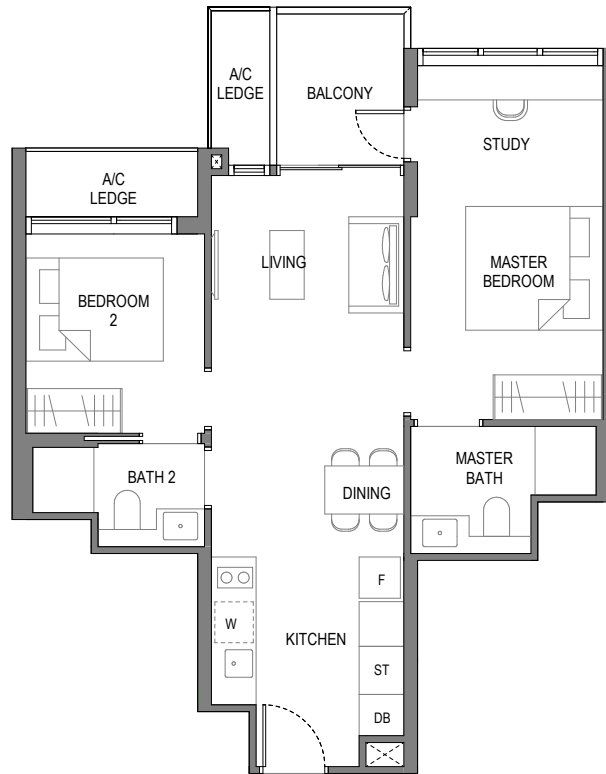


2-BEDROOM DELUXE + STUDY

Type B4S

Area: 68 sqm (include 4 sqm A/C Ledge, 5 sqm Balcony)

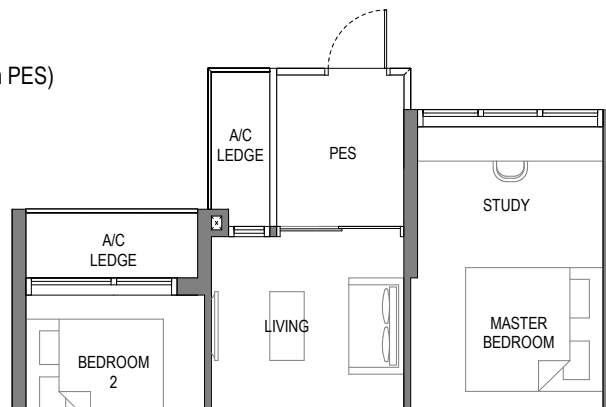
Unit(s): #02-15* to #18-15*
#02-26 to #18-26



Type B4S-P

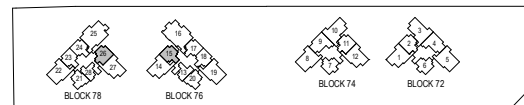
Area: 68 sqm (include 4 sqm A/C Ledge, 5 sqm PES)

Unit(s): #01-15*
#01-26



Note: *Mirror Image

Plans are subject to change/amendments as may be required and/or approved by the Developer and/or the relevant authorities and do not form part of any offer or contract. These are not drawn to scale and are for the purpose of visual presentation only. The balcony shall not be enclosed unless with the approved balcony screen. For an illustration of the approved balcony screen, please refer to APPROVED BALCONY SCREEN DESIGN page of this brochure.

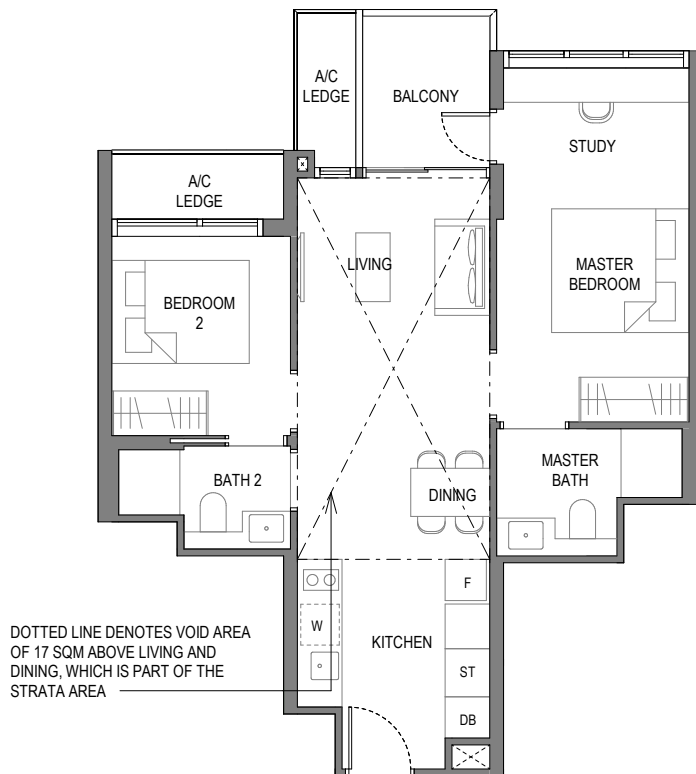


2-BEDROOM DELUXE + STUDY

Type B4S-T

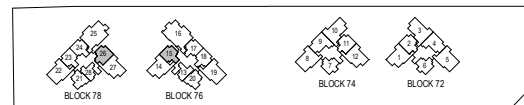
Area: 85 sqm (include 4 sqm A/C Ledge, 5 sqm Balcony, 17 sqm Void)

Unit(s): #19-15*
#19-26



Note: *Mirror Image

Plans are subject to change/amendments as may be required and/or approved by the Developer and/or the relevant authorities and do not form part of any offer or contract. These are not drawn to scale and are for the purpose of visual presentation only. The balcony shall not be enclosed unless with the approved balcony screen. For an illustration of the approved balcony screen, please refer to APPROVED BALCONY SCREEN DESIGN page of this brochure.



3-BEDROOM DELUXE

Type C1

Area: 87 sqm (include 6 sqm A/C Ledge, 5 sqm Balcony)

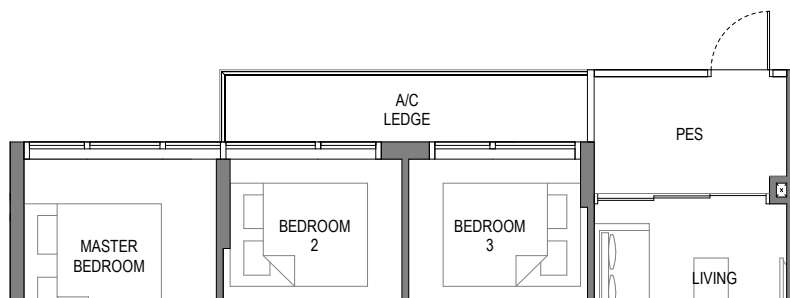
Unit(s): #02-04* to #10-04*
#02-09 to #10-09



Type C1-P

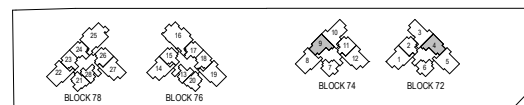
Area: 87 sqm (include 6 sqm A/C Ledge, 5 sqm PES)

Unit(s): #01-04*
#01-09



Note: *Mirror Image

Plans are subject to change/amendments as may be required and/or approved by the Developer and/or the relevant authorities and do not form part of any offer or contract. These are not drawn to scale and are for the purpose of visual presentation only. The balcony shall not be enclosed unless with the approved balcony screen. For an illustration of the approved balcony screen, please refer to APPROVED BALCONY SCREEN DESIGN page of this brochure.

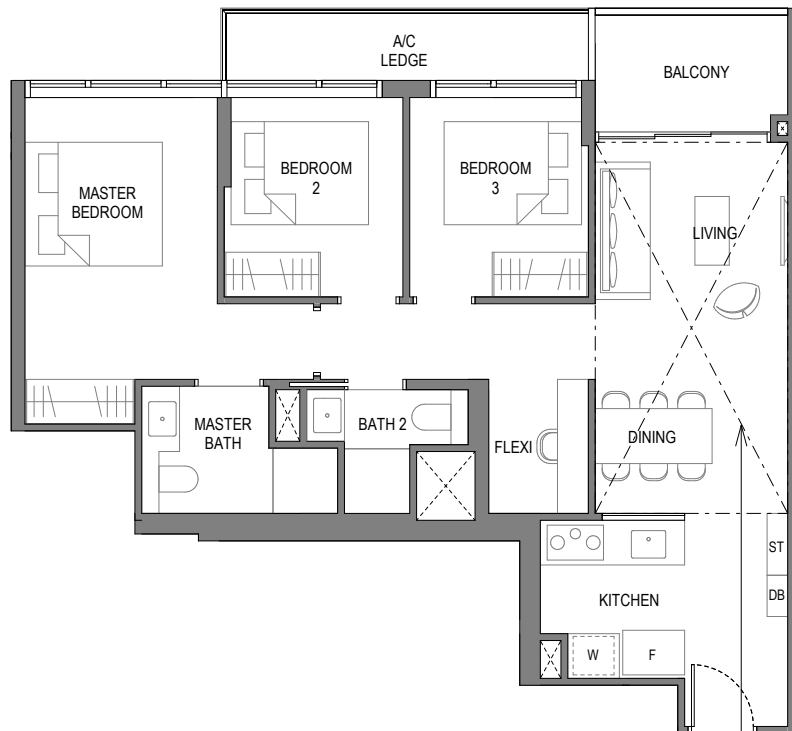


3-BEDROOM DELUXE

Type C1-T

Area: 104 sqm (include 6 sqm A/C Ledge, 5 sqm Balcony, 17 sqm Void)

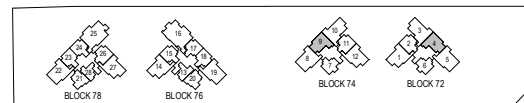
Unit(s): #11-04*
#11-09



DOTTED LINE DENOTES VOID AREA OF 17 SQM ABOVE LIVING AND DINING, WHICH IS PART OF THE STRATA AREA

Note: *Mirror Image

Plans are subject to change/amendments as may be required and/or approved by the Developer and/or the relevant authorities and do not form part of any offer or contract. These are not drawn to scale and are for the purpose of visual presentation only. The balcony shall not be enclosed unless with the approved balcony screen. For an illustration of the approved balcony screen, please refer to APPROVED BALCONY SCREEN DESIGN page of this brochure.



3-BEDROOM PREMIUM

Type C2

Area: 102 sqm (include 7 sqm A/C Ledge, 7 sqm Balcony)

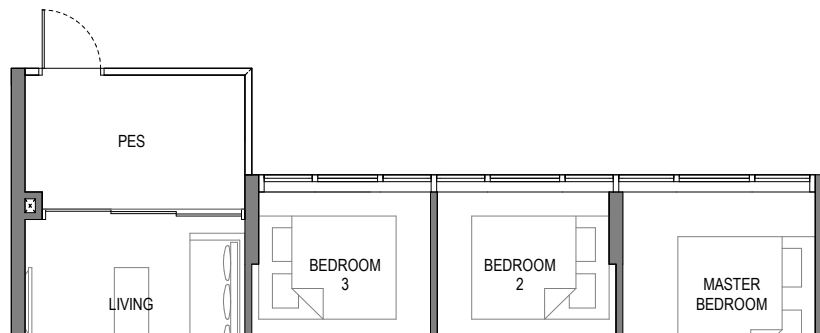
Unit(s): #02-01* to #11-01*
 #02-12 to #11-12
 #02-14* to #19-14*
 #02-27 to #19-27



Type C2-P

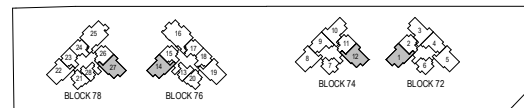
Area: 102 sqm (include 7 sqm A/C Ledge, 7 sqm PES)

Unit(s): #01-01*
 #01-12
 #01-14*
 #01-27



Note: *Mirror Image

Plans are subject to change/amendments as may be required and/or approved by the Developer and/or the relevant authorities and do not form part of any offer or contract. These are not drawn to scale and are for the purpose of visual presentation only. The balcony shall not be enclosed unless with the approved balcony screen. For an illustration of the approved balcony screen, please refer to APPROVED BALCONY SCREEN DESIGN page of this brochure.

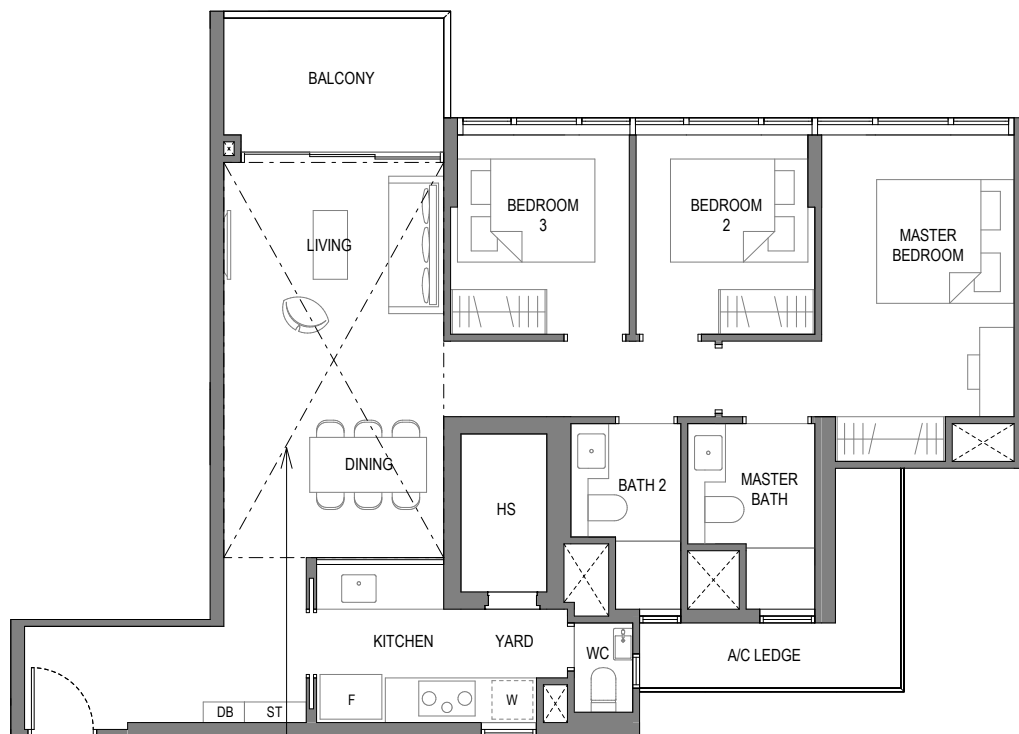


3-BEDROOM PREMIUM

Type C2-T

Area: 122 sqm (include 7 sqm A/C Ledge, 7 sqm Balcony, 20 sqm Void)

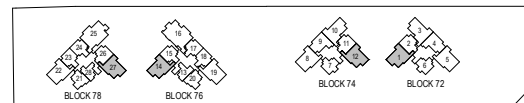
Unit(s): #12-01*
 #12-12
 #20-14*
 #20-27



DOTTED LINE DENOTES VOID AREA OF 20 SQM ABOVE LIVING AND DINING, WHICH IS PART OF THE STRATA AREA

Note: *Mirror Image

Plans are subject to change/amendments as may be required and/or approved by the Developer and/or the relevant authorities and do not form part of any offer or contract. These are not drawn to scale and are for the purpose of visual presentation only. The balcony shall not be enclosed unless with the approved balcony screen. For an illustration of the approved balcony screen, please refer to APPROVED BALCONY SCREEN DESIGN page of this brochure.

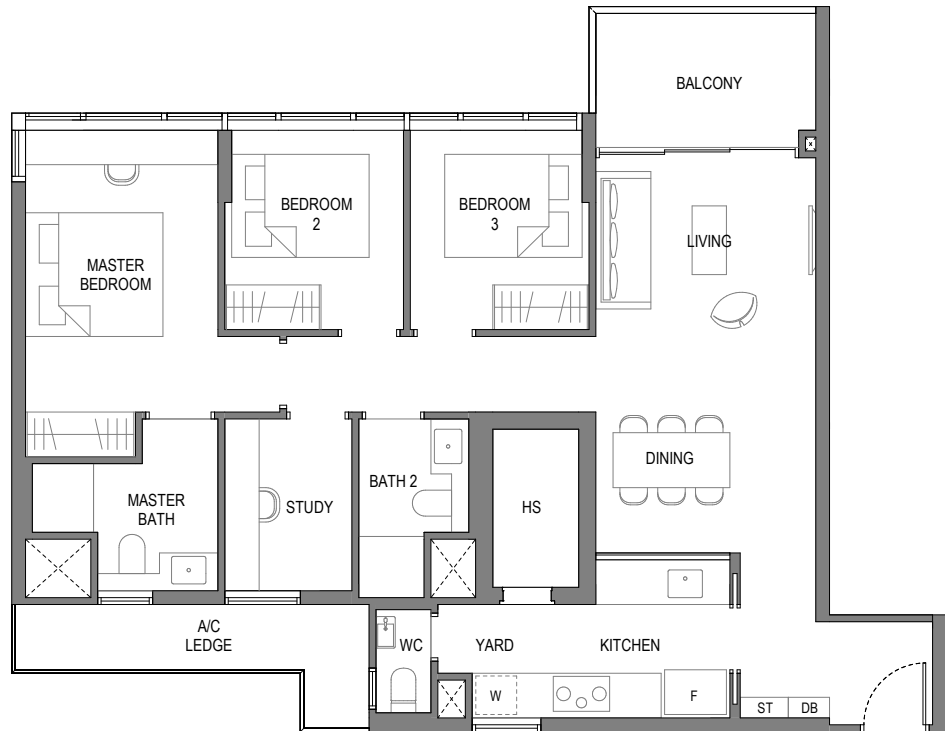


3-BEDROOM PREMIUM + STUDY

Type C3S

Area: 107 sqm (include 7 sqm A/C Ledge, 7 sqm Balcony)

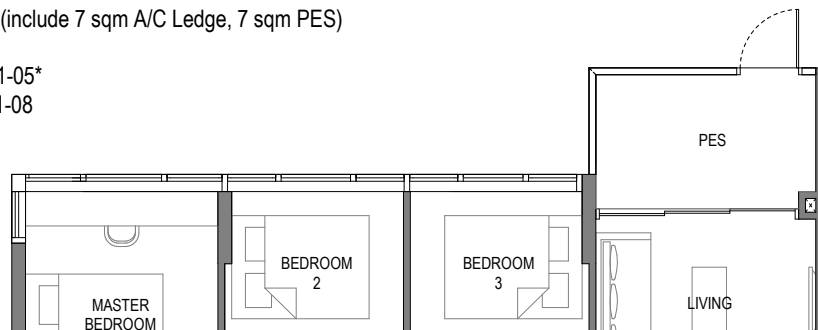
Unit(s): #02-05* to #11-05*
#02-08 to #11-08



Type C3S-P

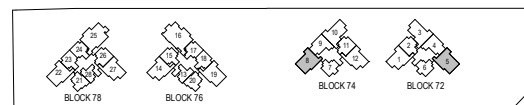
Area: 107 sqm (include 7 sqm A/C Ledge, 7 sqm PES)

Unit(s): #01-05*
#01-08



Note: *Mirror Image

Plans are subject to change/amendments as may be required and/or approved by the Developer and/or the relevant authorities and do not form part of any offer or contract. These are not drawn to scale and are for the purpose of visual presentation only. The balcony shall not be enclosed unless with the approved balcony screen. For an illustration of the approved balcony screen, please refer to APPROVED BALCONY SCREEN DESIGN page of this brochure.

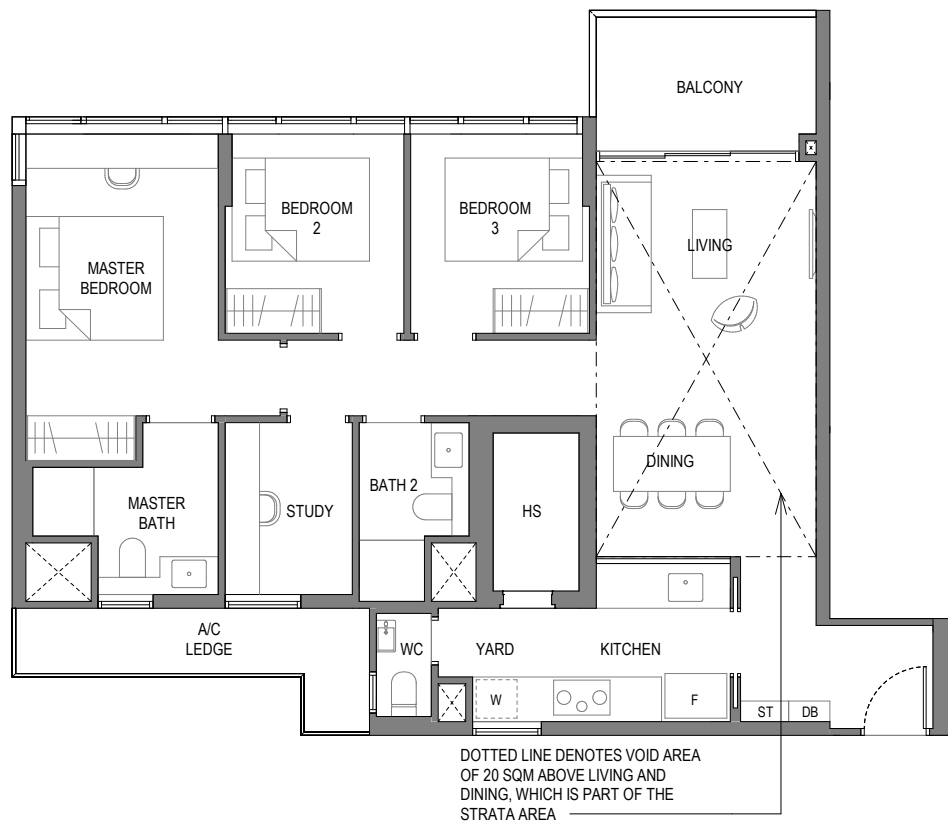


3-BEDROOM PREMIUM + STUDY

Type C3S-T

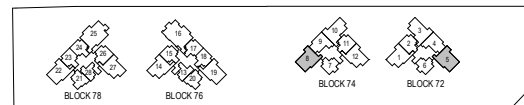
Area: 127 sqm (include 7 sqm A/C Ledge, 7 sqm Balcony, 20 sqm Void)

Unit(s): #12-05*
#12-08



Note: *Mirror Image

Plans are subject to change/amendments as may be required and/or approved by the Developer and/or the relevant authorities and do not form part of any offer or contract. These are not drawn to scale and are for the purpose of visual presentation only. The balcony shall not be enclosed unless with the approved balcony screen. For an illustration of the approved balcony screen, please refer to APPROVED BALCONY SCREEN DESIGN page of this brochure.



3-BEDROOM PREMIUM + STUDY

Type C4S

Area: 108 sqm (include 7 sqm A/C Ledge, 7 sqm Balcony)

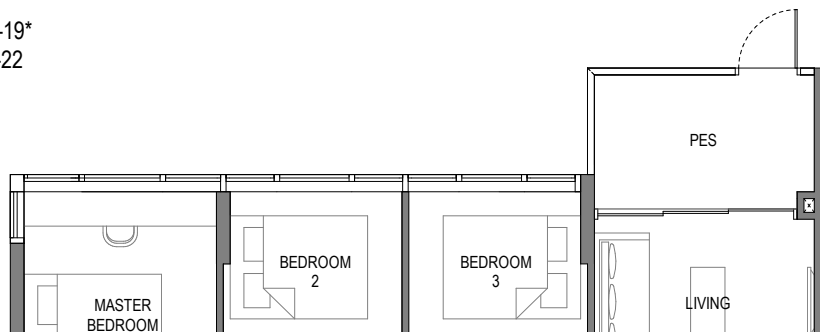
Unit(s): #02-19* to #19-19*
#02-22 to #19-22



Type C4S-P

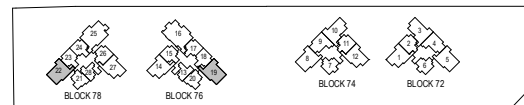
Area: 108 sqm (include 7 sqm A/C Ledge, 7 sqm PES)

Unit(s): #01-19*
#01-22



Note: *Mirror Image

Plans are subject to change/amendments as may be required and/or approved by the Developer and/or the relevant authorities and do not form part of any offer or contract. These are not drawn to scale and are for the purpose of visual presentation only. The balcony shall not be enclosed unless with the approved balcony screen. For an illustration of the approved balcony screen, please refer to APPROVED BALCONY SCREEN DESIGN page of this brochure.

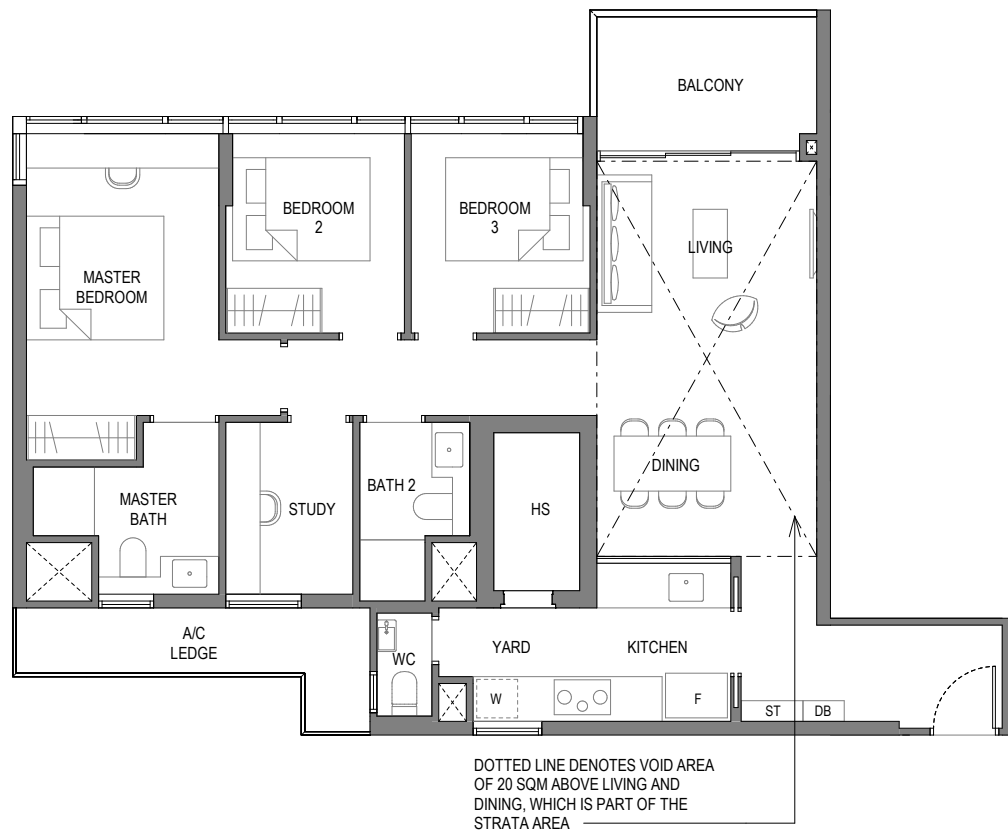


3-BEDROOM PREMIUM + STUDY

Type C4S-T

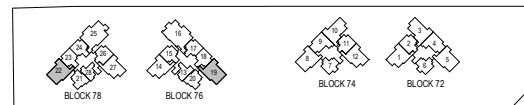
Area: 128 sqm (include 7 sqm A/C Ledge, 7 sqm Balcony, 20 sqm Void)

Unit(s): #20-19*
#20-22



Note: *Mirror Image

Plans are subject to change/amendments as may be required and/or approved by the Developer and/or the relevant authorities and do not form part of any offer or contract. These are not drawn to scale and are for the purpose of visual presentation only. The balcony shall not be enclosed unless with the approved balcony screen. For an illustration of the approved balcony screen, please refer to APPROVED BALCONY SCREEN DESIGN page of this brochure.



3-BEDROOM PREMIUM + STUDY

Type C5S

Area: 111 sqm (include 7 sqm A/C Ledge, 7 sqm Balcony)

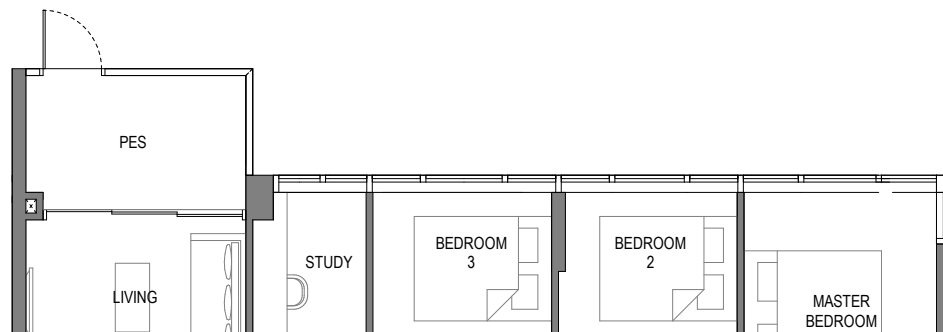
Unit(s): #02-03* to #09-03*
#02-10 to #09-10



Type C5S-P

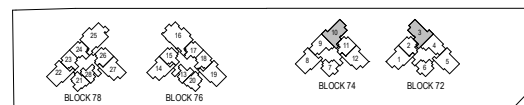
Area: 111 sqm (include 7 sqm A/C Ledge, 7 sqm PES)

Unit(s): #01-03*
#01-10



Note: *Mirror Image

Plans are subject to change/amendments as may be required and/or approved by the Developer and/or the relevant authorities and do not form part of any offer or contract. These are not drawn to scale and are for the purpose of visual presentation only. The balcony shall not be enclosed unless with the approved balcony screen. For an illustration of the approved balcony screen, please refer to APPROVED BALCONY SCREEN DESIGN page of this brochure.

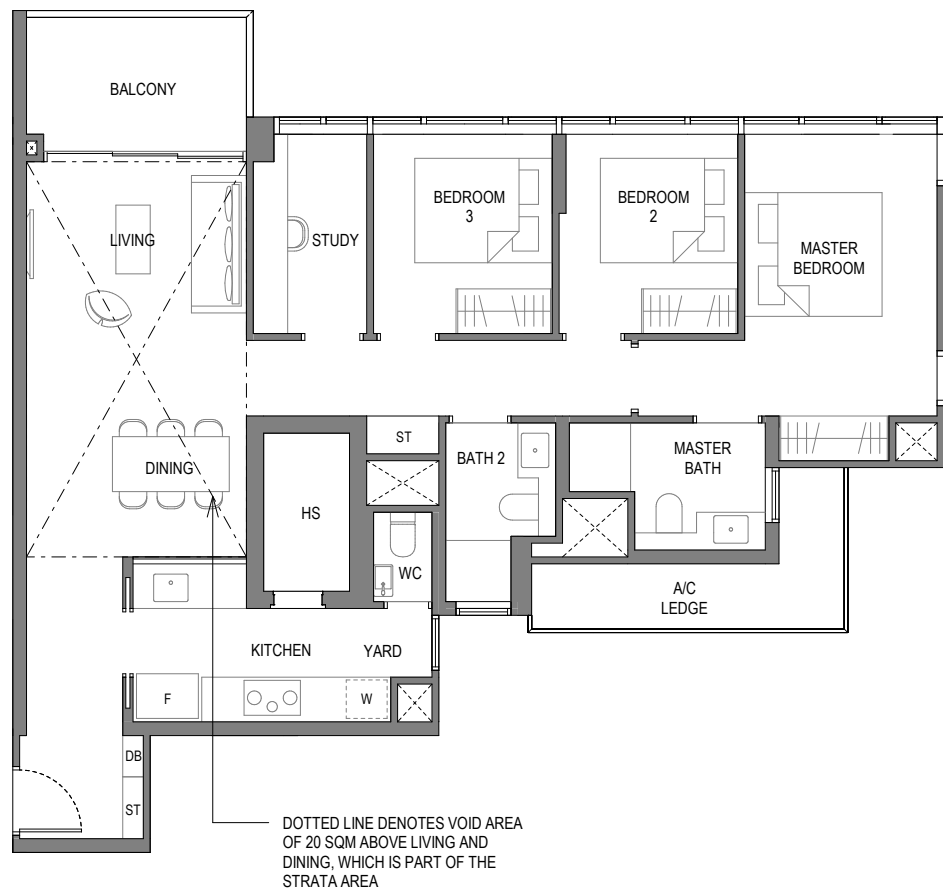


3-BEDROOM PREMIUM + STUDY

Type C5S-T

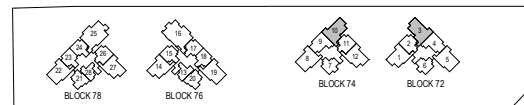
Area: 131 sqm (include 7 sqm A/C Ledge, 7 sqm Balcony, 20 sqm Void)

Unit(s): #10-03*
#10-10



Note: *Mirror Image

Plans are subject to change/amendments as may be required and/or approved by the Developer and/or the relevant authorities and do not form part of any offer or contract. These are not drawn to scale and are for the purpose of visual presentation only. The balcony shall not be enclosed unless with the approved balcony screen. For an illustration of the approved balcony screen, please refer to APPROVED BALCONY SCREEN DESIGN page of this brochure.

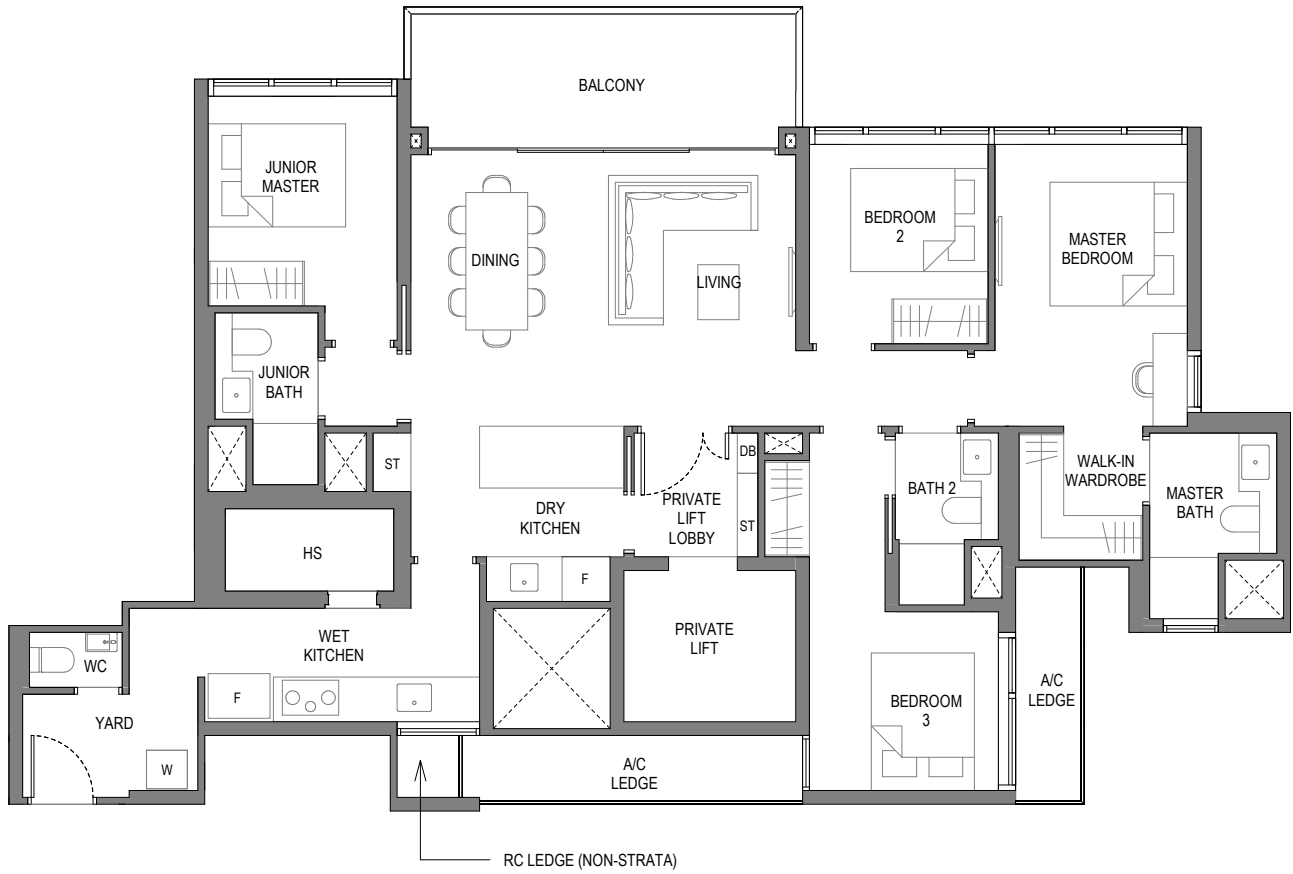


4-BEDROOM LUXURY

Type D1

Area: 142 sqm (include 9 sqm A/C Ledge, 12 sqm Balcony)

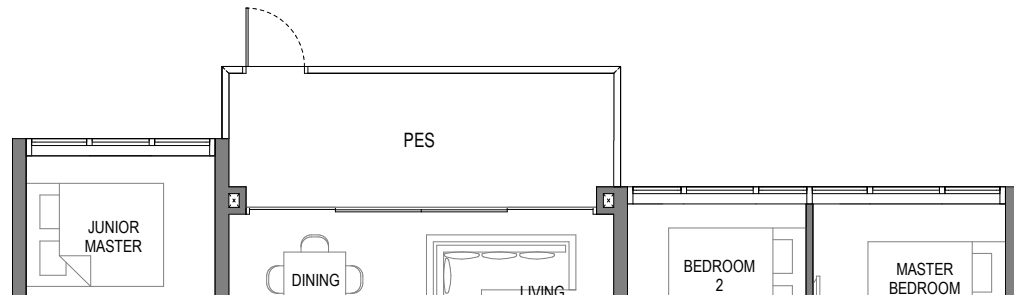
Unit(s): #02-25 to #17-25



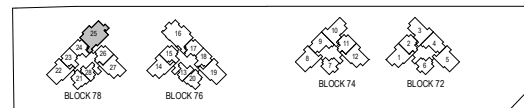
Type D1-P

Area: 142 sqm (include 9 sqm A/C Ledge, 12 sqm PES)

Unit(s): #01-25



Plans are subject to change/amendments as may be required and/or approved by the Developer and/or the relevant authorities and do not form part of any offer or contract. These are not drawn to scale and are for the purpose of visual presentation only. The balcony shall not be enclosed unless with the approved balcony screen. For an illustration of the approved balcony screen, please refer to APPROVED BALCONY SCREEN DESIGN page of this brochure.

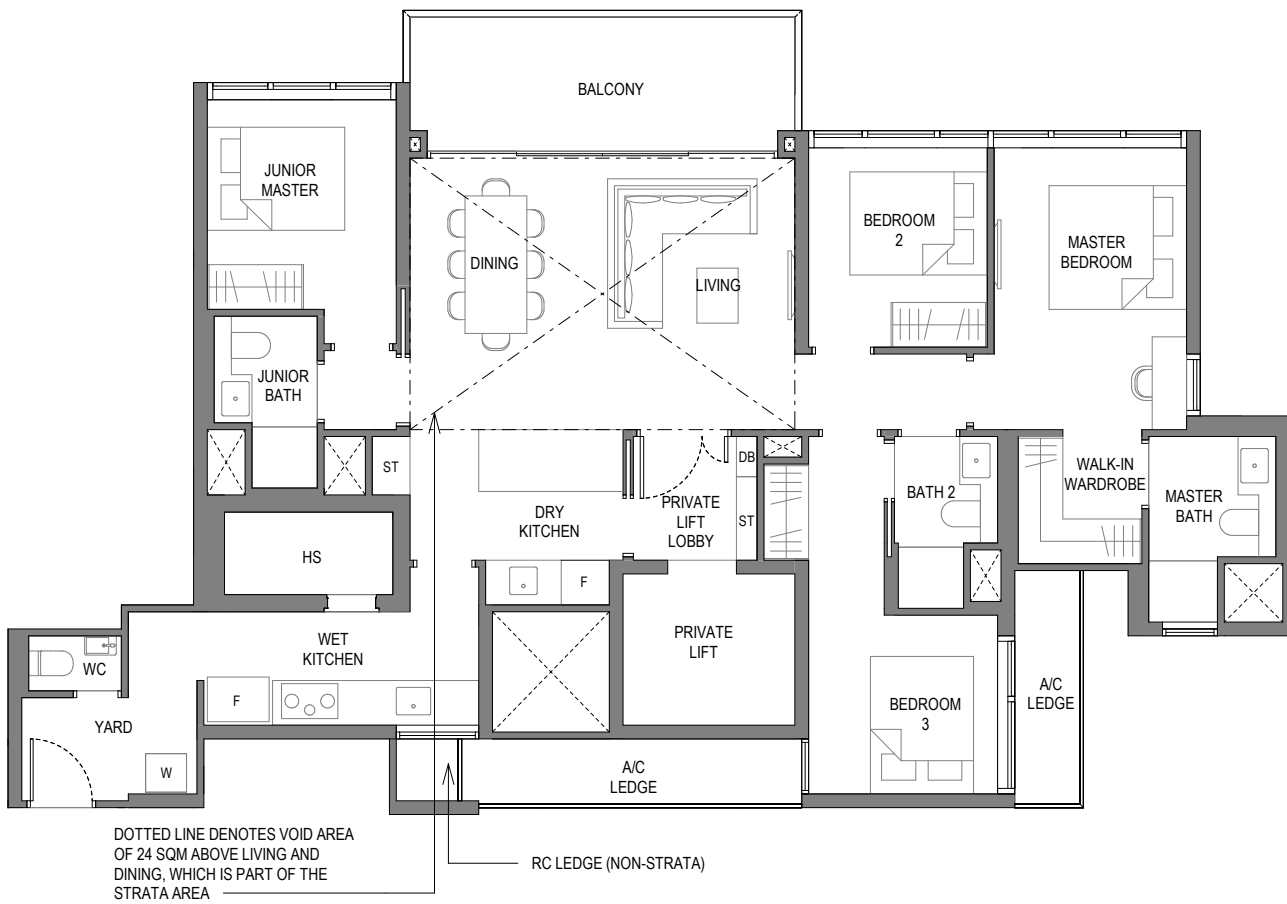


4-BEDROOM LUXURY

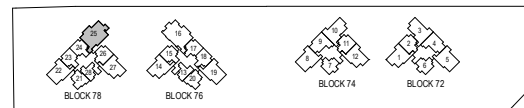
Type D1-T

Area: 166 sqm (include 9 sqm A/C Ledge, 12 sqm Balcony, 24 sqm Void)

Unit(s): #18-25



Plans are subject to change/amendments as may be required and/or approved by the Developer and/or the relevant authorities and do not form part of any offer or contract. These are not drawn to scale and are for the purpose of visual presentation only. The balcony shall not be enclosed unless with the approved balcony screen. For an illustration of the approved balcony screen, please refer to APPROVED BALCONY SCREEN DESIGN page of this brochure.

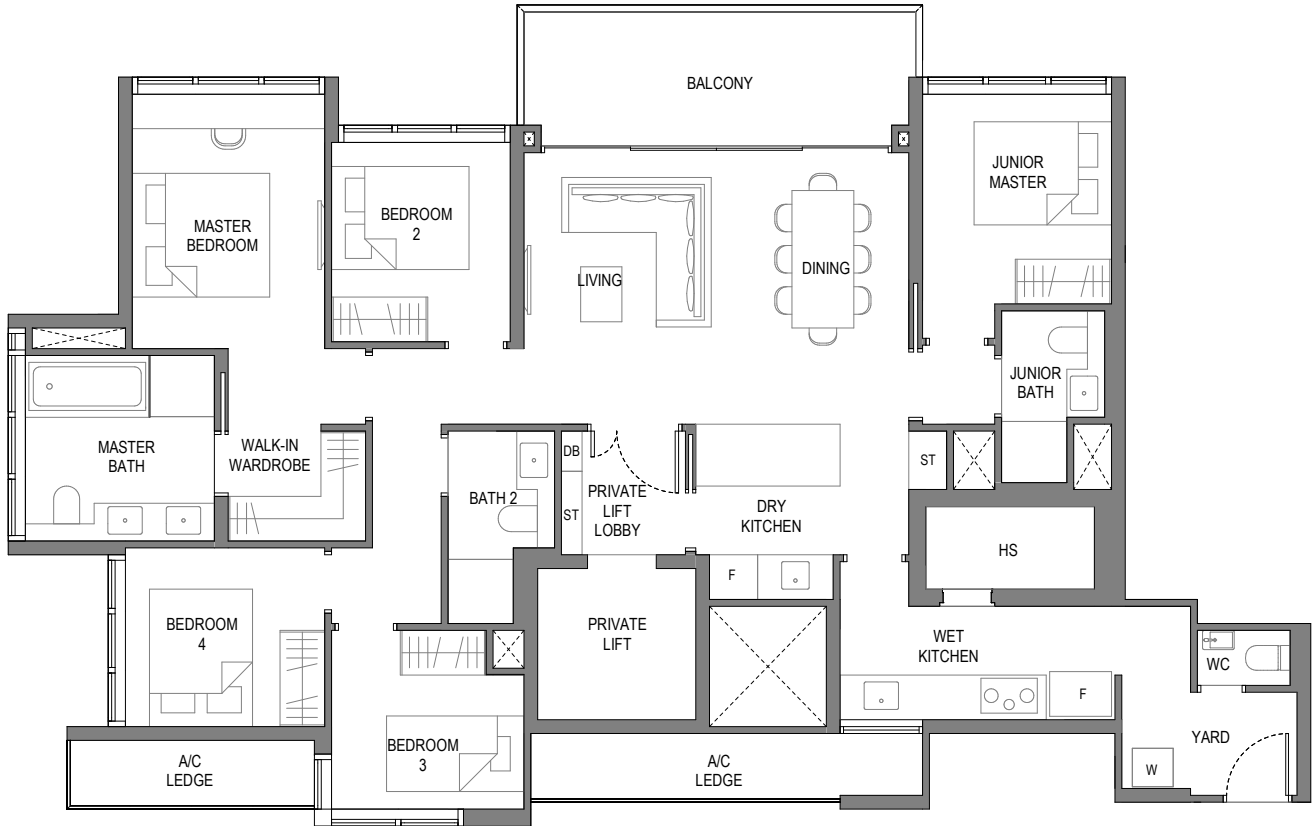


5-BEDROOM LUXURY

Type E1

Area: 156 sqm (include 10 sqm A/C Ledge, 12 sqm Balcony)

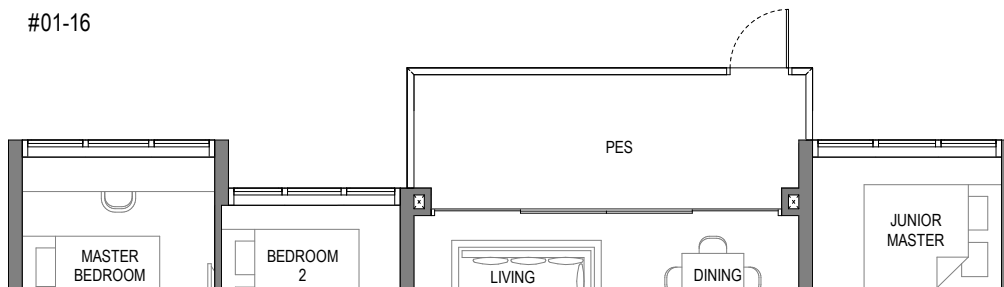
Unit(s): #02-16 to #17-16



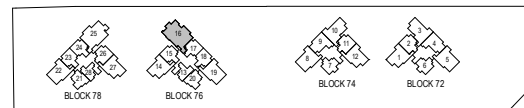
Type E1-P

Area: 156 sqm (include 10 sqm A/C Ledge, 12 sqm PES)

Unit(s): #01-16



Plans are subject to change/amendments as may be required and/or approved by the Developer and/or the relevant authorities and do not form part of any offer or contract. These are not drawn to scale and are for the purpose of visual presentation only. The balcony shall not be enclosed unless with the approved balcony screen. For an illustration of the approved balcony screen, please refer to APPROVED BALCONY SCREEN DESIGN page of this brochure.

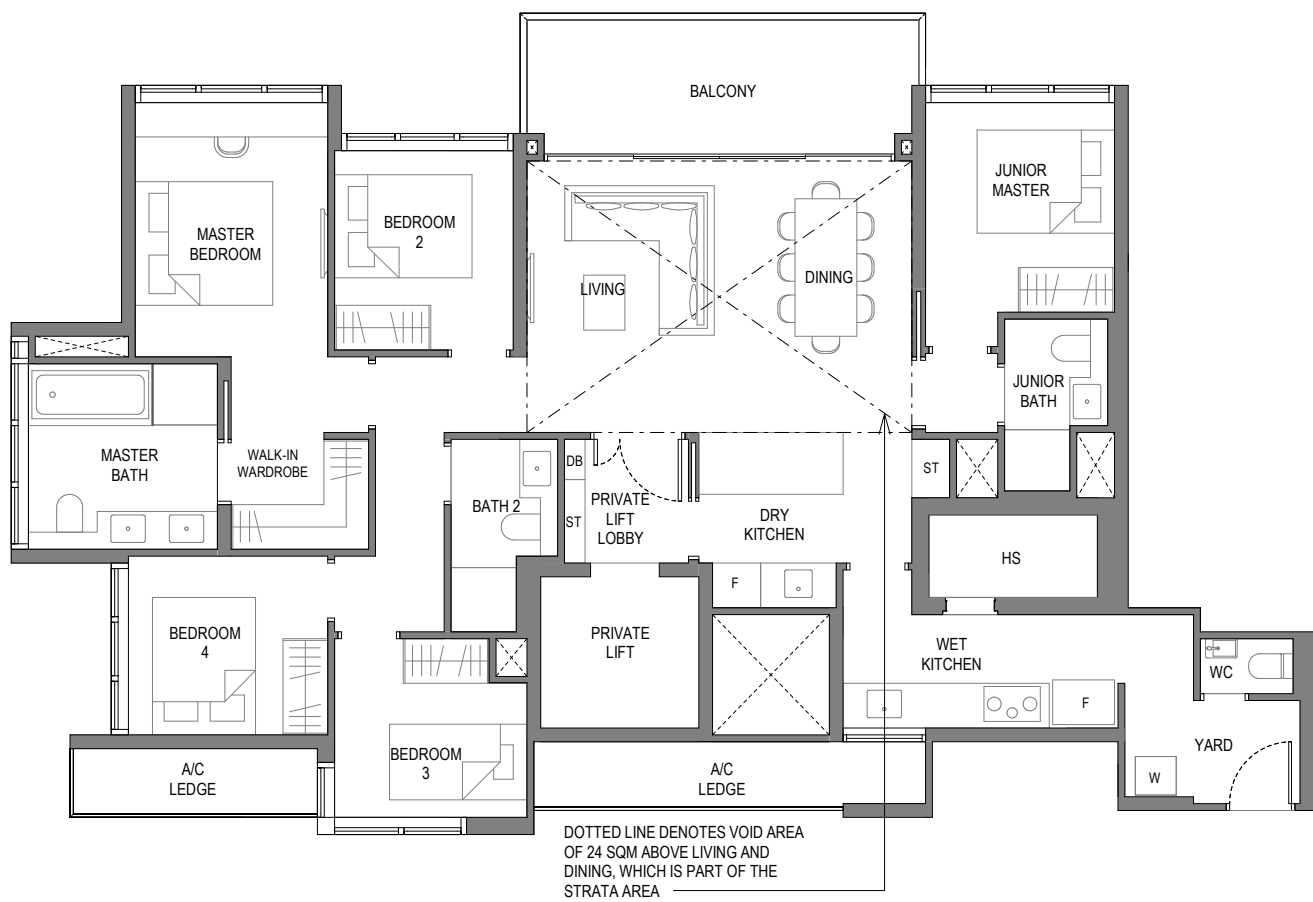


5-BEDROOM LUXURY

Type E1-T

Area: 180 sqm (include 10 sqm A/C Ledge, 12 sqm Balcony, 24 sqm Void)

Unit(s): #18-16



Plans are subject to change/amendments as may be required and/or approved by the Developer and/or the relevant authorities and do not form part of any offer or contract. These are not drawn to scale and are for the purpose of visual presentation only. The balcony shall not be enclosed unless with the approved balcony screen. For an illustration of the approved balcony screen, please refer to APPROVED BALCONY SCREEN DESIGN page of this brochure.

