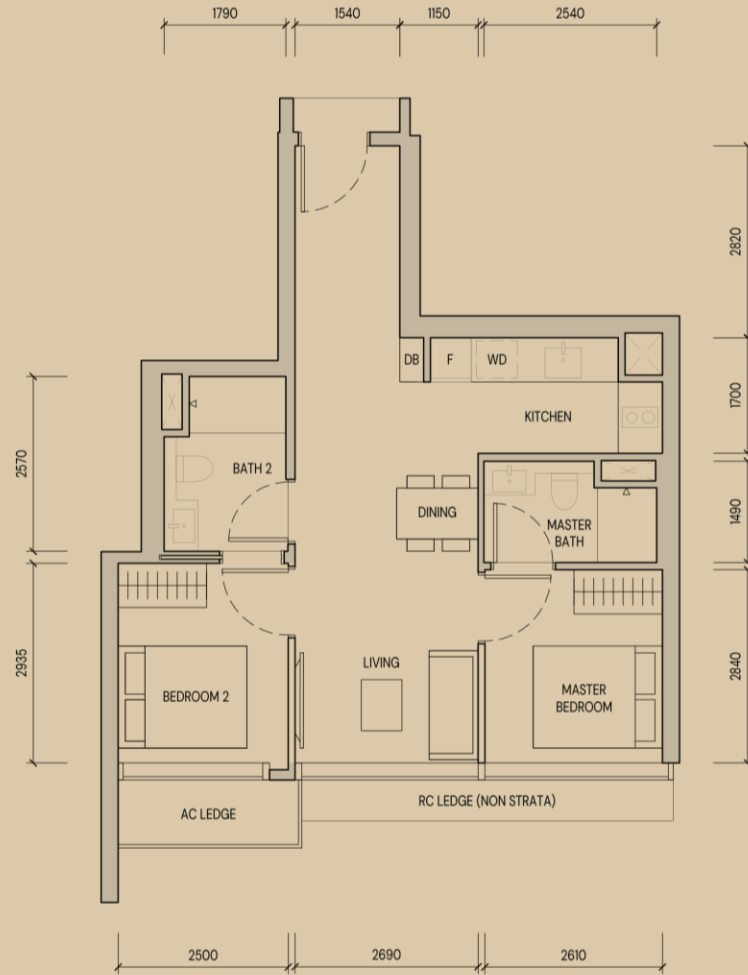


# Prestige Collection



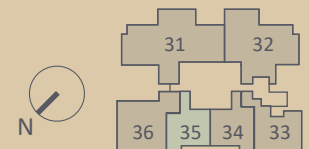
- City view
- Efficient dumbbell layout
- Nook kitchen equipped with SMEG appliances
- Ensuite baths for all bedrooms
- Non-structural wall between Living, Master Bedroom and Bedroom 2 for future flexibility
- Full-height wardrobes in bedrooms to maximize storage

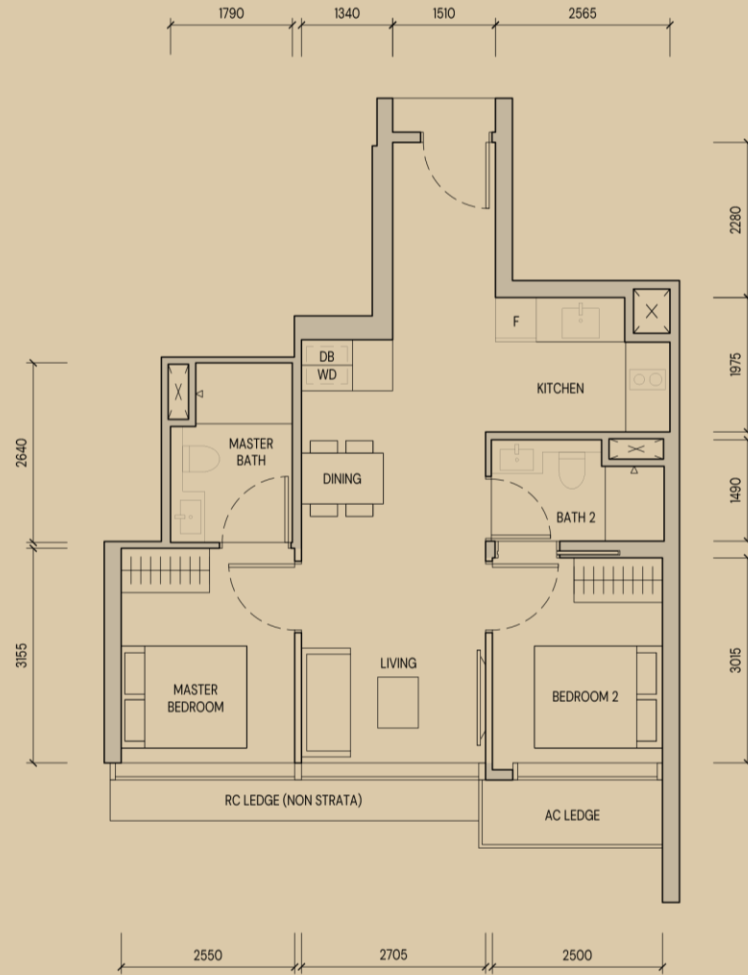
## Prestige Collection

Type B1, B1H  
2-Bedroom  
635 sqft

### Legend

- DB Distribution Board
- F Fridge
- WD Washer - Dryer





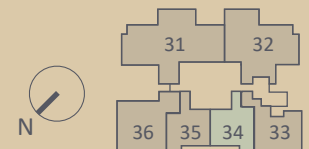
- City view
- Efficient dumbbell layout
- Nook kitchen equipped with SMEG appliances
- Ensuite baths for all bedrooms
- Non-structural wall between Living, Master Bedroom and Bedroom 2 for future flexibility
- Full-height wardrobes in bedrooms to maximize storage
- Additional storage provided next to Washer-Dryer and DB

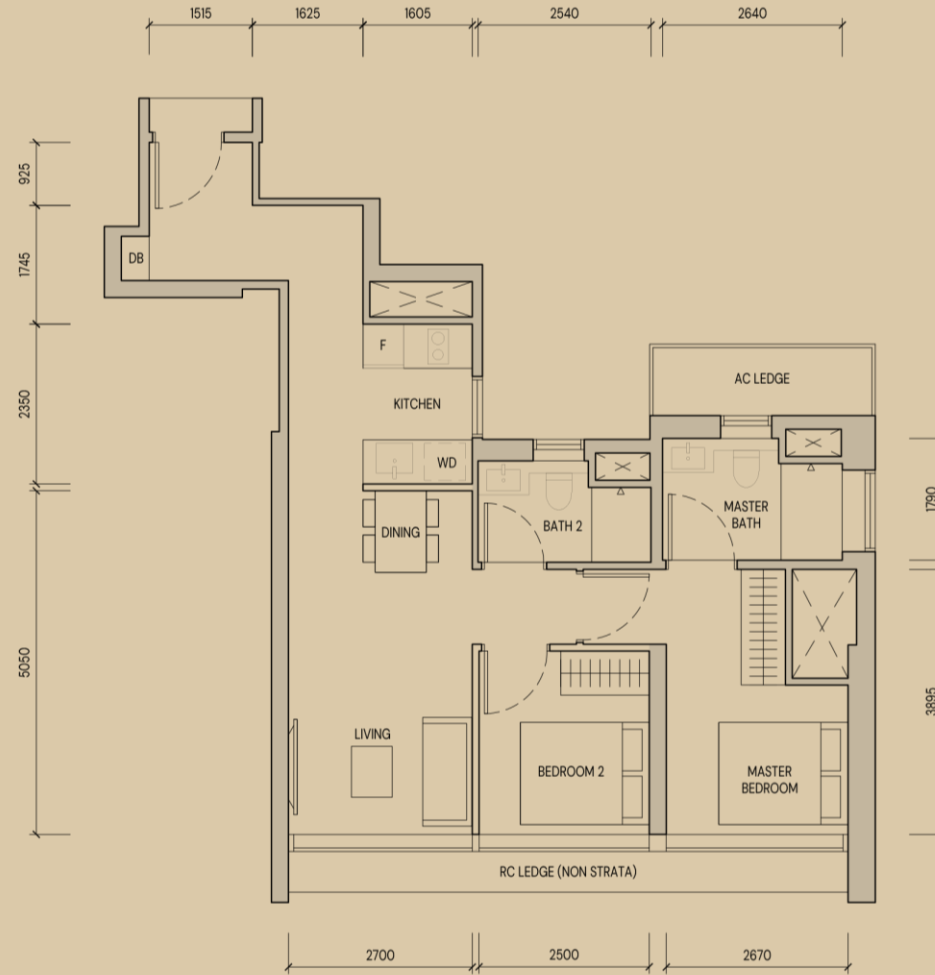
## Prestige Collection

Type B2, B2H  
2-Bedroom  
646 sqft

### Legend

- DB Distribution Board
- F Fridge
- WD Washer - Dryer





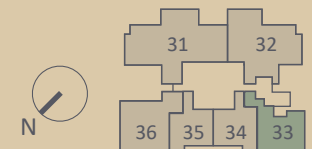
- City view
- Corner unit with better privacy
- Nook kitchen with window for natural ventilation and equipped with SMEG appliances
- All bathrooms have a window for natural ventilation
- Non-structural wall between Living and Bedroom 2 for future flexibility
- Full-height wardrobes provided in bedrooms to maximize storage

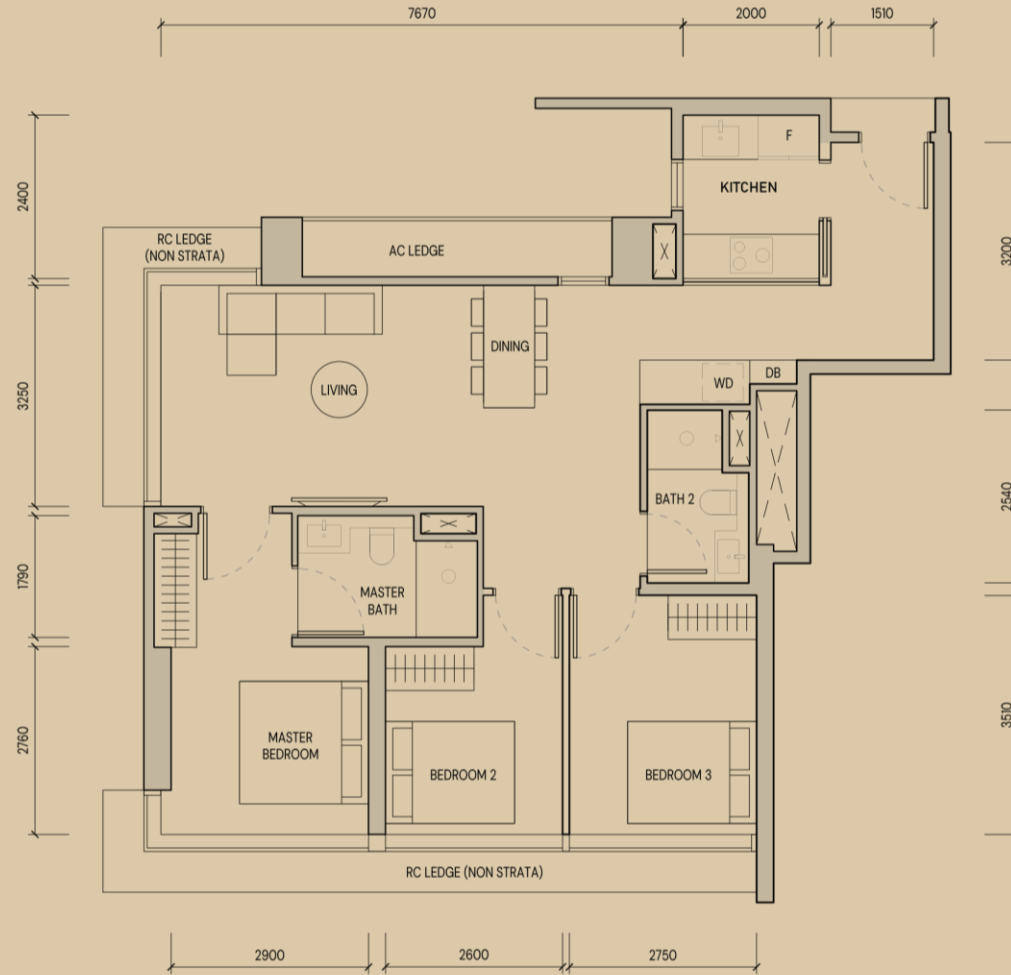
## Prestige Collection

Type B3, B3H  
2-Bedroom  
710 sqft

### Legend

- DB Distribution Board
- F Fridge
- WD Washer - Dryer





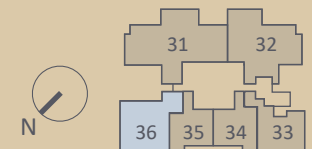
- Dual frontage: Kallang Riverside view from Living and City view from bedrooms
- Corner unit with better privacy
- Enclosed kitchen with window for natural ventilation and equipped with SMEG appliances
- Spacious Living and Dining (approx. 7m x 3.3m)
- Non-structural wall between Bedroom 2 and Bedroom 3 for future flexibility
- Full-height wardrobes provided in bedrooms to maximize storage
- Additional storage provided outside Washer-Dryer and DB

## Prestige Collection

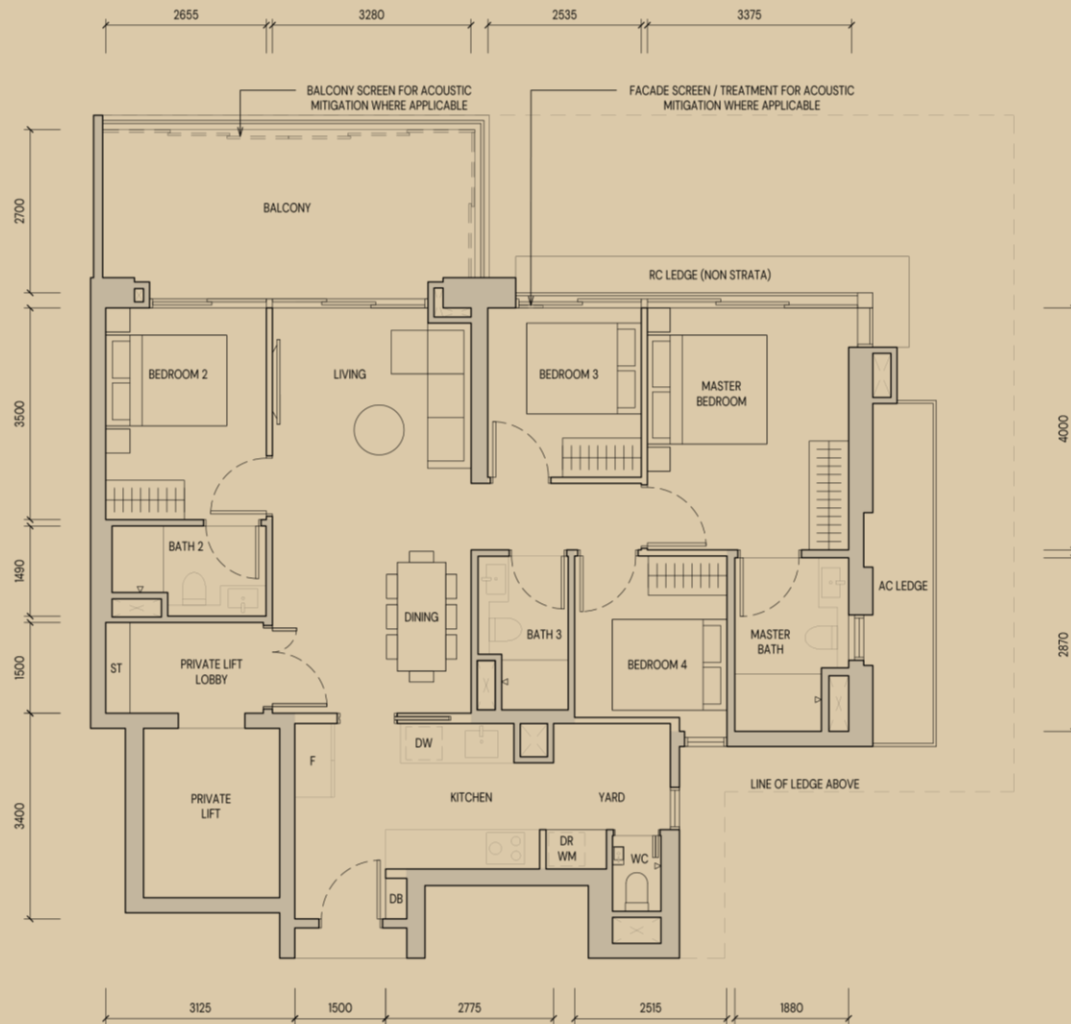
Type C1, C1H  
3-Bedroom  
1,001 sqft

### Legend

- DB Distribution Board
- F Fridge
- WD Washer - Dryer



# Signature Collection



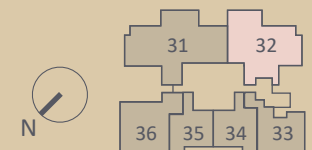
- Private Lift access via dedicated lobby
- Spacious Living and Dining (approx. 6.7m x 3.3m)
- Marble finishes for Private Lift Lobby, Living, and Dining
- Deep verandah balcony with panoramic bay views
- Enclosed kitchen and yard with window for natural ventilation and equipped with premium Miele appliances
- Master Bathroom with window for natural ventilation
- Non-structural wall between Bedroom 2 / Living and Bedroom 3 / Bedroom 4 / Master Bedroom for future flexibility
- Full-height sliding windows in bedrooms to maximize views and natural ventilation
- Full-height wardrobes provided in bedrooms to maximize storage

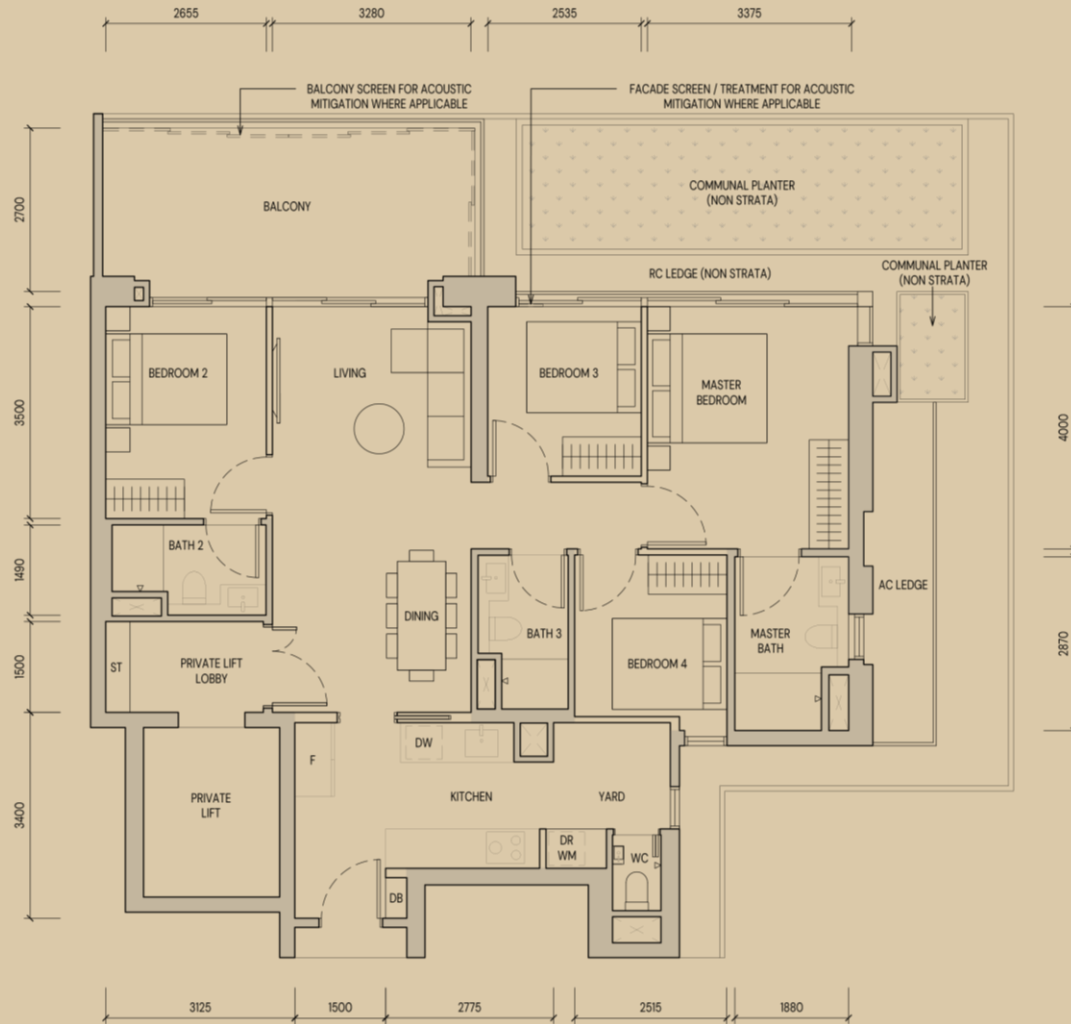
Legend

- DB Distribution Board
- DR Dyer
- DW Dishwasher
- F Fridge
- ST Storage
- WM Washing Machine

## Signature Collection

Type D1, D1H  
4-Bedroom  
1,442 sqft





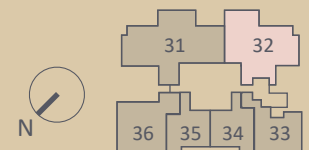
- Private Lift access via dedicated lobby
- Spacious Living and Dining (approx. 6.7m x 3.3m)
- Marble finishes for Private Lift Lobby, Living, and Dining
- Deep verandah balcony with panoramic bay views
- Communal planter inspired by tropical verandahs of Golden Mile Complex provides glimpses of greenery from within unit
- Enclosed kitchen and yard with window for natural ventilation and equipped with premium Miele appliances
- Master Bathroom with window for natural ventilation
- Non-structural wall between Bedroom 2 / Living and Bedroom 3 / Bedroom 4 / Master Bedroom for future flexibility
- Full-height sliding windows in bedrooms to maximize views and natural ventilation
- Full-height wardrobes provided in bedrooms to maximize storage

Legend

- DB Distribution Board
- DR Dyer
- DW Dishwasher
- F Fridge
- ST Storage
- WM Washing Machine

## Signature Collection

Type D1g, D1Hg  
4-Bedroom  
1,442 sqft

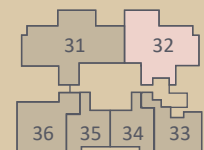




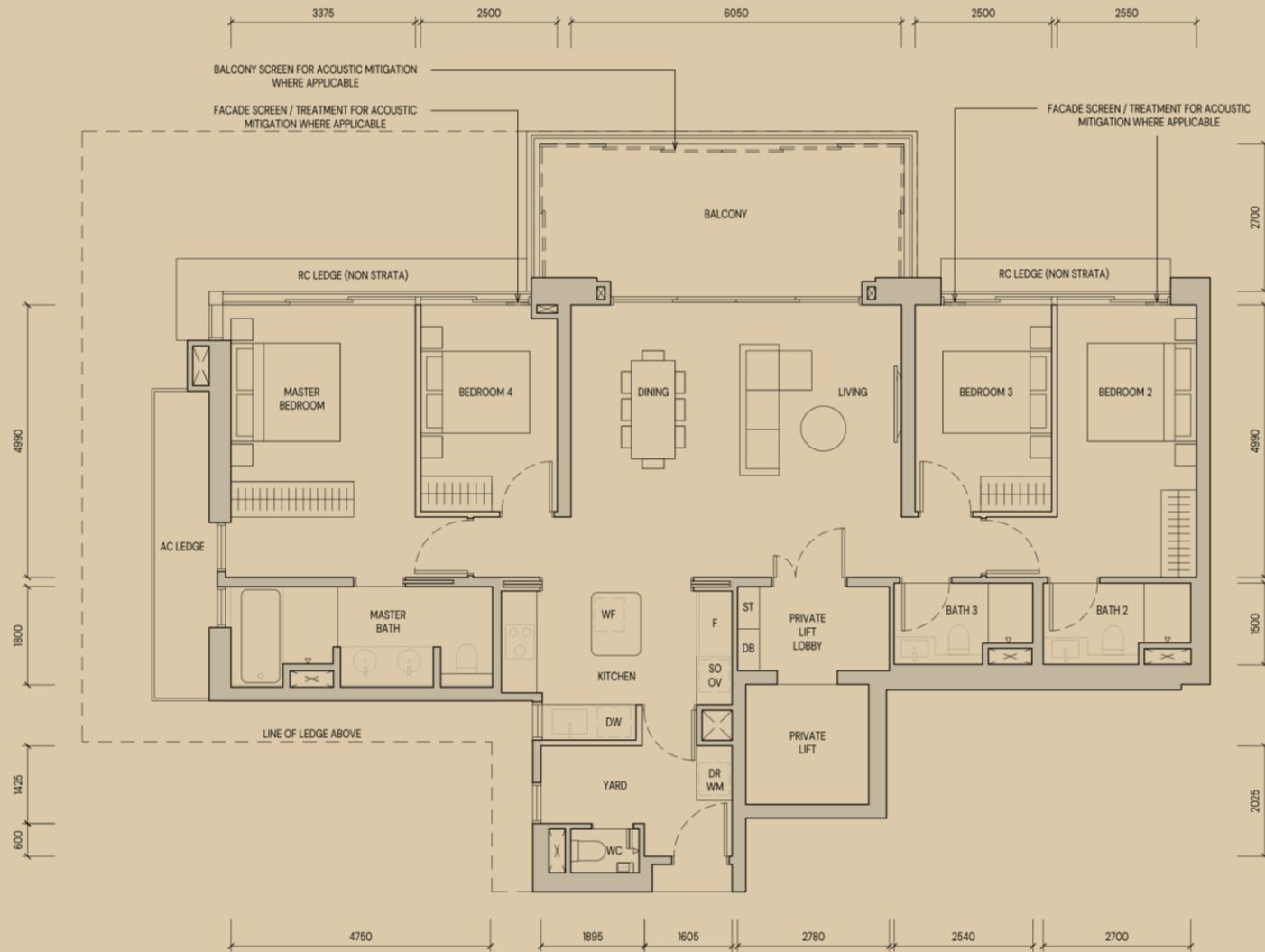


# Signature Collection

Type D1g, D1Hg  
 4-Bedroom  
 1,442 sqft







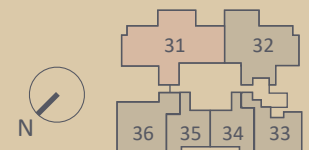
- Private Lift access via dedicated lobby
- Spacious Living and Dining (approx. 6m x 5m)
- Marble finishes for Private Lift Lobby, Living, and Dining
- Deep verandah balcony with panoramic bay views
- Ducted air-conditioning for Living, Dining and Master Bedroom
- Enclosed kitchen with island counter, equipped with premium Miele appliances and window for natural ventilation
- Master Bedroom provided with walk-in wardrobe while full-height wardrobes are provided in other bedrooms to maximize storage
- Master Bathroom with luxurious double vanity, bathtub and window for natural ventilation
- Non-structural wall between Bedrooms for future flexibility
- Full-height sliding windows in bedrooms to maximize views and natural ventilation

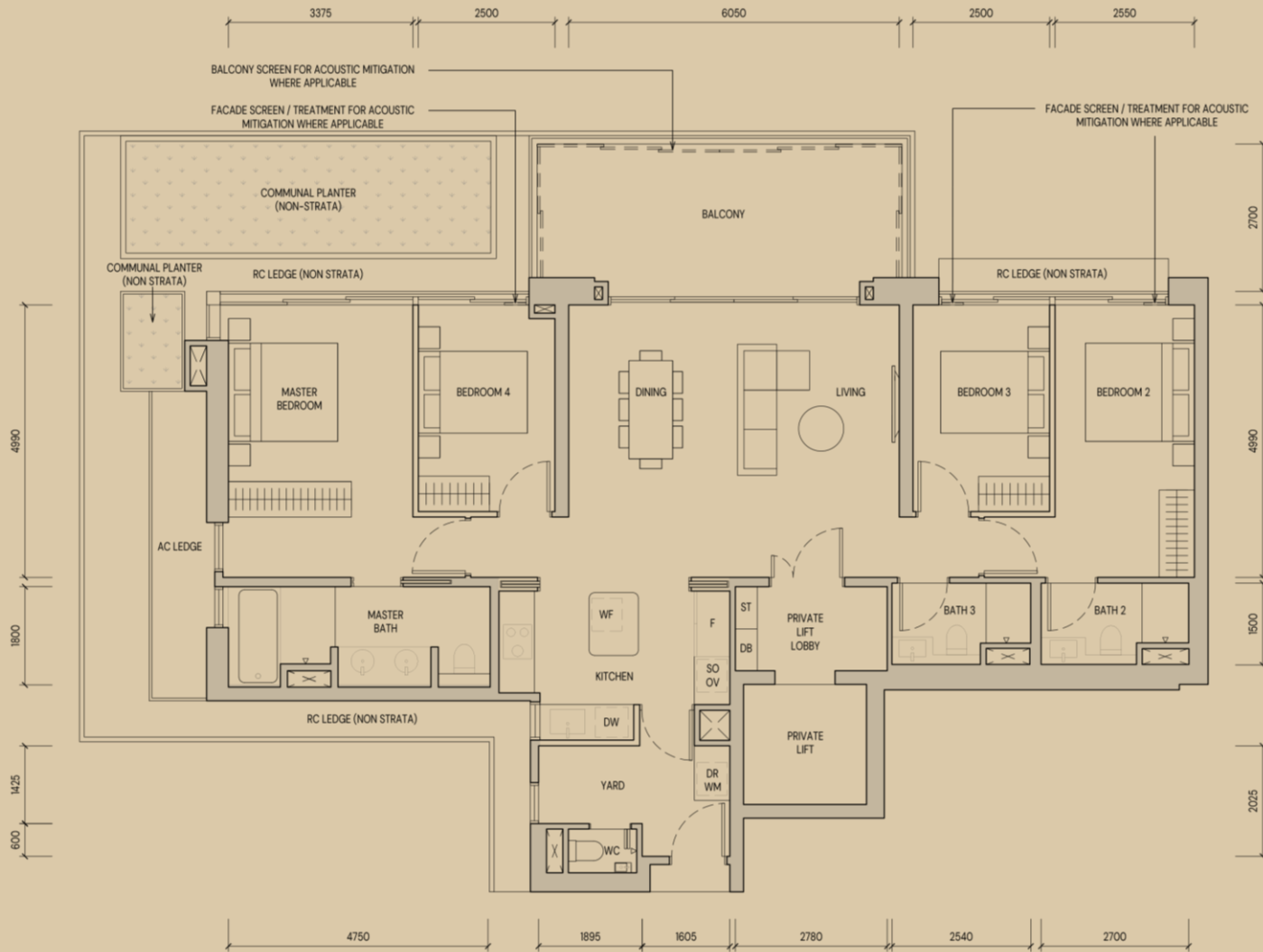
Legend

- DB Distribution Board
- DR Dryer
- DW Dishwasher
- F Fridge
- OV Oven
- SO Steam Oven
- ST Storage
- WF Wine Fridge
- WM Washing Machine

# Signature Collection

Type D2, D2H  
4-Bedroom Premium  
1,798 sqft





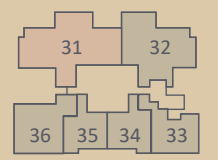
- Private Lift access via dedicated lobby
- Spacious Living and Dining (approx. 6m x 5m)
- Marble finishes for Private Lift Lobby, Living, and Dining
- Deep verandah balcony with panoramic bay views
- Communal planter inspired by tropical verandahs of Golden Mile Complex provides glimpses of greenery from within unit
- Ducted air-conditioning for Living, Dining and Master Bedroom
- Enclosed kitchen with island counter, equipped with premium Miele appliances and window for natural ventilation
- Master Bedroom provided with walk-in wardrobe while full-height wardrobes are provided in other bedrooms to maximize storage
- Master Bathroom with luxurious double vanity, bathtub and window for natural ventilation
- Non-structural wall between Bedrooms for future flexibility
- Full-height sliding windows in bedrooms to maximize views and natural ventilation

Legend

- DB Distribution Board
- DR Dryer
- DW Dishwasher
- F Fridge
- OV Oven
- SO Steam Oven
- ST Storage
- WF Wine Fridge
- WM Washing Machine

# Signature Collection

Type D2g, D2Hg  
4-Bedroom Premium  
1,798 sqft







## Signature Collection

Type D2g, D2Hg  
 4-Bedroom Premium  
 1,798 sqft

