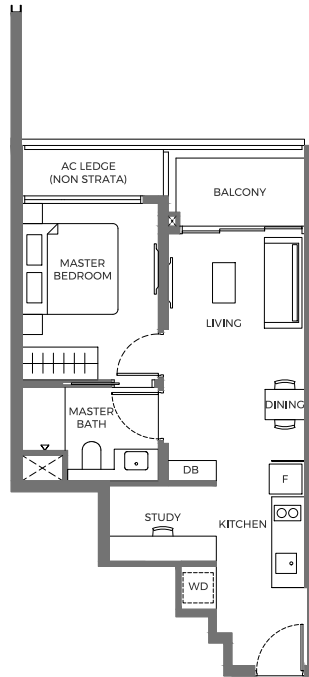


1 BEDROOM + STUDY

TYPE A1s

47 SQM / 506 SQFT

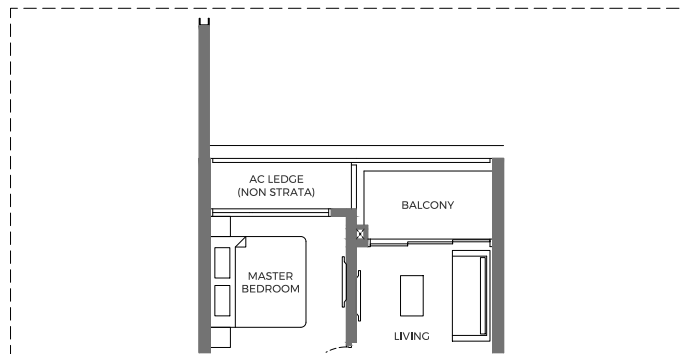
12 CLEMENTI AVENUE 1
#05-10 TO #39-10



TYPE A1s

47 SQM / 506 SQFT

12 CLEMENTI AVENUE 1
#04-10

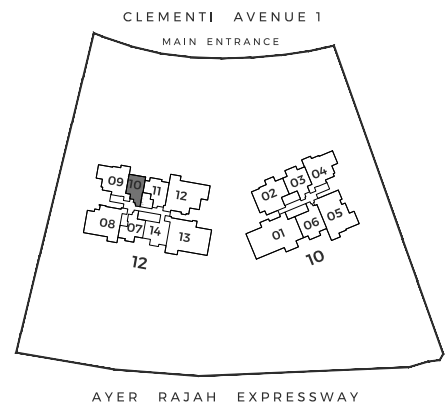


LEGEND:

(WHERE APPLICABLE)

AC	AIR-CONDITIONER	⊠	VOID SPACE (EXCLUDED FROM STRATA AREA)
ADR	AUTOMATED DRYING RACK	■	WALL NOT ALLOWED TO BE HACKED OR ALTERED (INCLUDING BY WAY OF DRILLING) (REFER TO THE CLAUSE PERTAINING TO PREFABRICATED PREFINISHED VOLUMETRIC CONSTRUCTION IN THE SALES & PURCHASE AGREEMENT)
DB	DISTRIBUTION BOARD		
F	FRIDGE		
HS	HOUSEHOLD SHELTER		
PES	PRIVATE ENCLOSED SPACE		
RC	REINFORCED CONCRETE		
WD	WASHER CUM DRYER		
WI	WINE CHILLER		
WC	WATER CLOSET		
WDP	WATER DISPENSER & PURIFIER		

DISCLAIMER: Area includes balcony or PES where applicable and excludes among others, the AC ledge and RC ledge. Please refer to the key plan for orientation. All floor plans are approximate measurements only and are subject to government re-survey. The balcony or PES shall not be enclosed unless with the approved balcony or PES screen. The cost of screen and installation shall be borne by the purchaser.

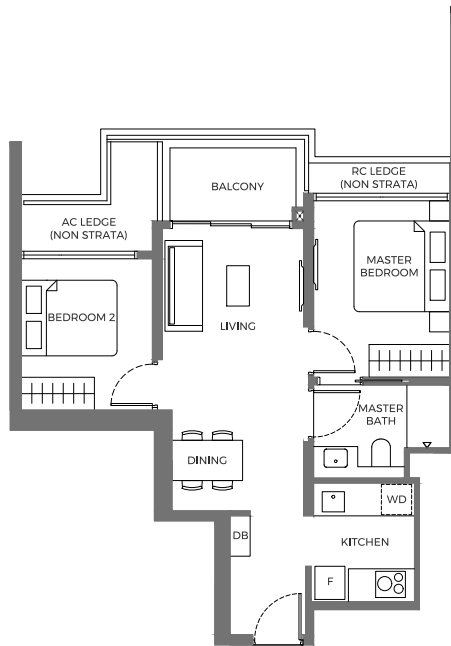


2 BEDROOM

TYPE B1

57 SQM / 614 SQFT

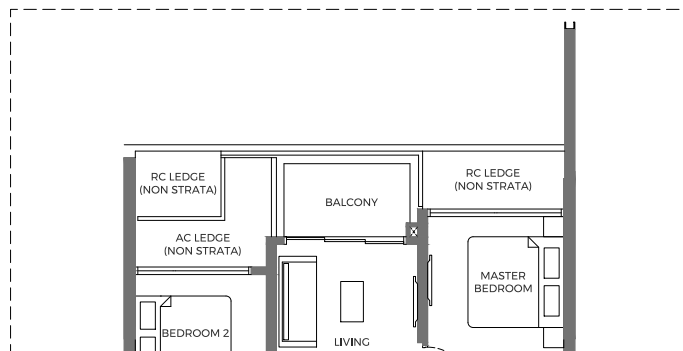
12 CLEMENTI AVENUE 1
#05-11 TO #39-11



TYPE B1

57 SQM / 614 SQFT

12 CLEMENTI AVENUE 1
#04-11

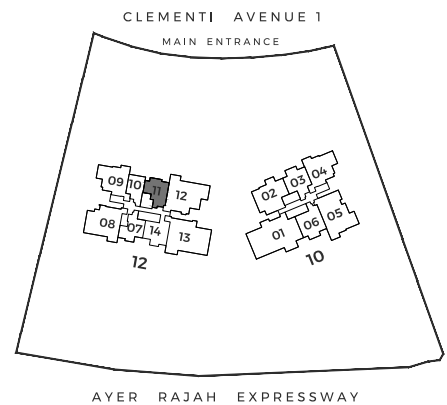


LEGEND:

(WHERE APPLICABLE)

AC	AIR-CONDITIONER	⊠	VOID SPACE (EXCLUDED FROM STRATA AREA)
ADR	AUTOMATED DRYING RACK	■	WALL NOT ALLOWED TO BE HACKED OR ALTERED (INCLUDING BY WAY OF DRILLING) (REFER TO THE CLAUSE PERTAINING TO PREFABRICATED PREFINISHED VOLUMETRIC CONSTRUCTION IN THE SALES & PURCHASE AGREEMENT)
DB	DISTRIBUTION BOARD		
F	FRIDGE		
HS	HOUSEHOLD SHELTER		
PES	PRIVATE ENCLOSED SPACE		
RC	REINFORCED CONCRETE		
WD	WASHER CUM DRYER		
WI	WINE CHILLER		
WC	WATER CLOSET		
WDP	WATER DISPENSER & PURIFIER		

DISCLAIMER: Area includes balcony or PES where applicable and excludes among others, the AC ledge and RC ledge. Please refer to the key plan for orientation. All floor plans are approximate measurements only and are subject to government re-survey. The balcony or PES shall not be enclosed unless with the approved balcony or PES screen. The cost of screen and installation shall be borne by the purchaser.

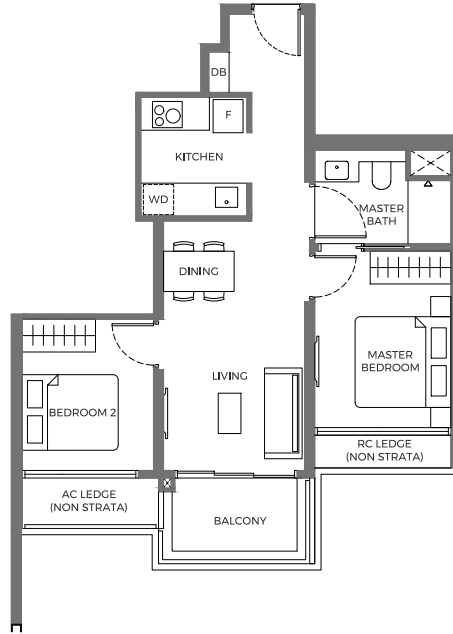


2 BEDROOM

TYPE B2

57 SQM / 614 SQFT

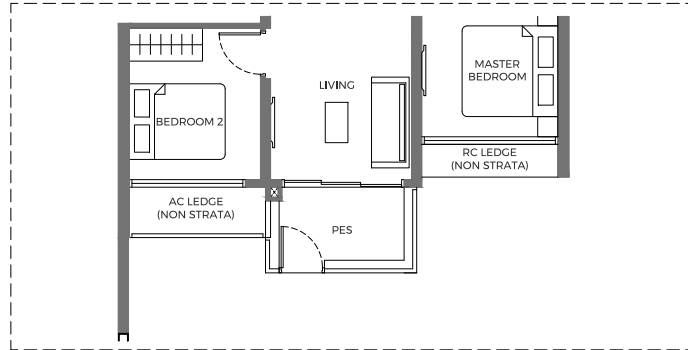
12 CLEMENTI AVENUE 1
#05-07 TO #39-07



TYPE B2-PES

57 SQM / 614 SQFT

12 CLEMENTI AVENUE 1
#04-07

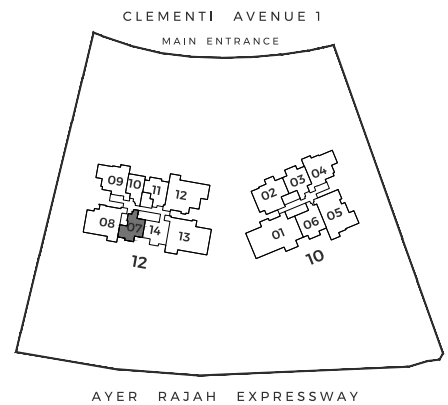


LEGEND:

(WHERE APPLICABLE)

AC	AIR-CONDITIONER	⊠	VOID SPACE (EXCLUDED FROM STRATA AREA)
ADR	AUTOMATED DRYING RACK	■	WALL NOT ALLOWED TO BE HACKED OR ALTERED (INCLUDING BY WAY OF DRILLING)
DB	DISTRIBUTION BOARD		(REFER TO THE CLAUSE PERTAINING TO PREFABRICATED
F	FRIDGE		PREFINISHED VOLUMETRIC CONSTRUCTION IN THE SALES & PURCHASE AGREEMENT)
HS	HOUSEHOLD SHELTER		
PES	PRIVATE ENCLOSED SPACE		
RC	REINFORCED CONCRETE		
WD	WASHER CUM DRYER		
WI	WINE CHILLER		
WC	WATER CLOSET		
WDP	WATER DISPENSER & PURIFIER		

DISCLAIMER: Area includes balcony or PES where applicable and excludes among others, the AC ledge and RC ledge. Please refer to the key plan for orientation. All floor plans are approximate measurements only and are subject to government re-survey. The balcony or PES shall not be enclosed unless with the approved balcony or PES screen. The cost of screen and installation shall be borne by the purchaser.

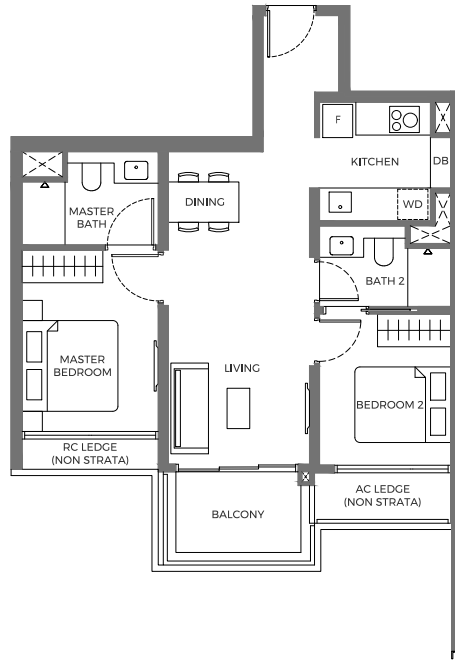


2 BEDROOM PREMIUM

TYPE B3p

65 SQM / 700 SQFT

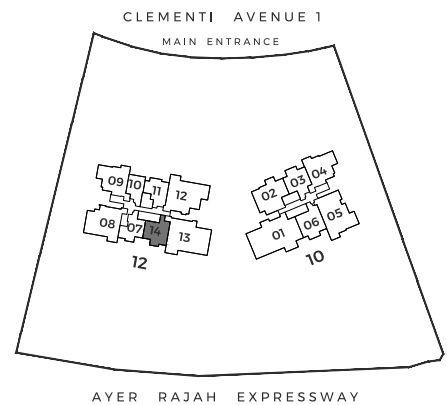
12 CLEMENTI AVENUE 1
#05-14 TO #39-14



LEGEND:
(WHERE APPLICABLE)

- | | | | |
|-----|----------------------------|---|---|
| AC | AIR-CONDITIONER | ⊠ | VOID SPACE (EXCLUDED FROM STRATA AREA) |
| ADR | AUTOMATED DRYING RACK | ■ | WALL NOT ALLOWED TO BE HACKED OR ALTERED (INCLUDING BY WAY OF DRILLING) |
| DB | DISTRIBUTION BOARD | | (REFER TO THE CLAUSE PERTAINING TO PREFABRICATED PREFINISHED VOLUMETRIC CONSTRUCTION IN THE SALES & PURCHASE AGREEMENT) |
| F | FRIDGE | | |
| HS | HOUSEHOLD SHELTER | | |
| PES | PRIVATE ENCLOSED SPACE | | |
| RC | REINFORCED CONCRETE | | |
| WD | WASHER CUM DRYER | | |
| WI | WINE CHILLER | | |
| WC | WATER CLOSET | | |
| WDP | WATER DISPENSER & PURIFIER | | |

DISCLAIMER : Area includes balcony or PES where applicable and excludes among others , the AC ledge and RC ledge. Please refer to the key plan for orientation. All floor plans are approximate measurements only and are subject to government re-survey. The balcony or PES shall not be enclosed unless with the approved balcony or PES screen. The cost of screen and installation shall be borne by the purchaser.

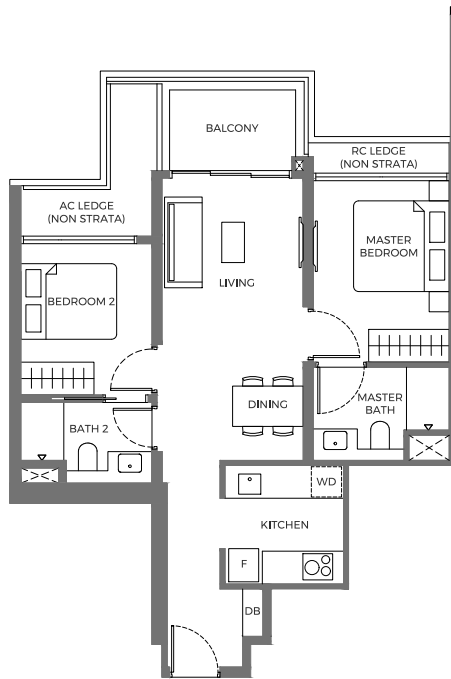


2 BEDROOM PREMIUM

TYPE B4p

65 SQM / 700 SQFT

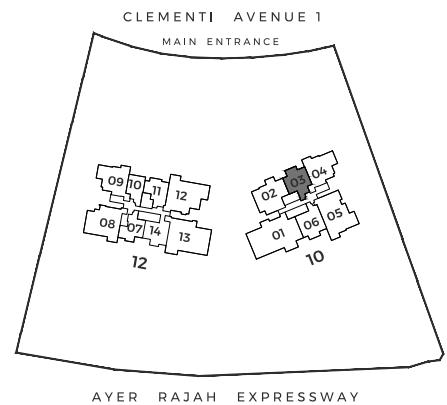
10 CLEMENTI AVENUE 1
#04-03 TO #39-03



LEGEND:
(WHERE APPLICABLE)

- | | | | |
|-----|----------------------------|---|---|
| AC | AIR-CONDITIONER | ⊠ | VOID SPACE (EXCLUDED FROM STRATA AREA) |
| ADR | AUTOMATED DRYING RACK | ■ | WALL NOT ALLOWED TO BE HACKED OR ALTERED (INCLUDING BY WAY OF DRILLING) (REFER TO THE CLAUSE PERTAINING TO PREFABRICATED PREFINISHED VOLUMETRIC CONSTRUCTION IN THE SALES & PURCHASE AGREEMENT) |
| DB | DISTRIBUTION BOARD | | |
| F | FRIDGE | | |
| HS | HOUSEHOLD SHELTER | | |
| PES | PRIVATE ENCLOSED SPACE | | |
| RC | REINFORCED CONCRETE | | |
| WD | WASHER CUM DRYER | | |
| WI | WINE CHILLER | | |
| WC | WATER CLOSET | | |
| WDP | WATER DISPENSER & PURIFIER | | |

DISCLAIMER: Area includes balcony or PES where applicable and excludes among others, the AC ledge and RC ledge. Please refer to the key plan for orientation. All floor plans are approximate measurements only and are subject to government re-survey. The balcony or PES shall not be enclosed unless with the approved balcony or PES screen. The cost of screen and installation shall be borne by the purchaser.

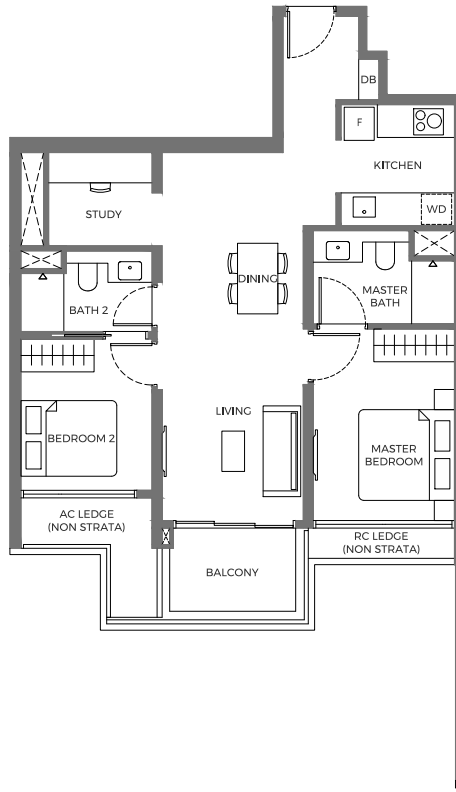


2 BEDROOM + STUDY

TYPE B5s

75 SQM / 807 SQFT

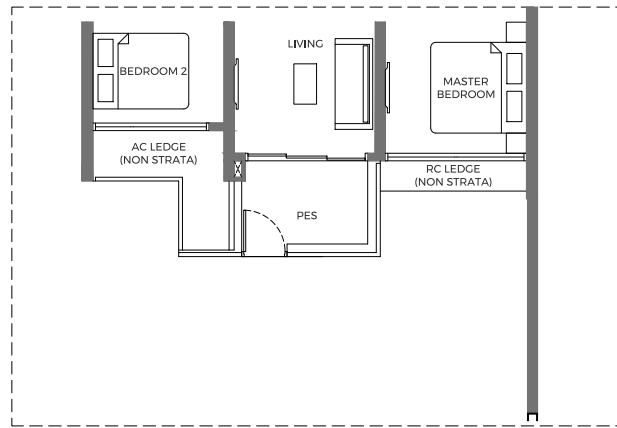
10 CLEMENTI AVENUE 1
#05-06 TO #59-06



TYPE B5s-PES

75 SQM / 807 SQFT

10 CLEMENTI AVENUE 1
#04-06



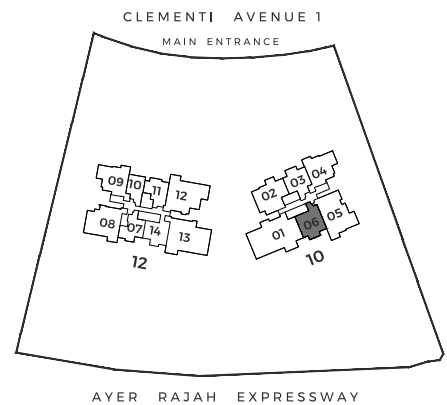
LEGEND:

(WHERE APPLICABLE)

- AC AIR-CONDITIONER
- ADR AUTOMATED DRYING RACK
- DB DISTRIBUTION BOARD
- F FRIDGE
- HS HOUSEHOLD SHELTER
- PES PRIVATE ENCLOSED SPACE
- RC REINFORCED CONCRETE
- WD WASHER CUM DRYER
- WI WINE CHILLER
- WC WATER CLOSET
- WDP WATER DISPENSER & PURIFIER

- VOID SPACE (EXCLUDED FROM STRATA AREA)
- WALL NOT ALLOWED TO BE HACKED OR ALTERED (INCLUDING BY WAY OF DRILLING) (REFER TO THE CLAUSE PERTAINING TO PREFABRICATED PREFINISHED VOLUMETRIC CONSTRUCTION IN THE SALES & PURCHASE AGREEMENT)

DISCLAIMER: Area includes balcony or PES where applicable and excludes among others, the AC ledge and RC ledge. Please refer to the key plan for orientation. All floor plans are approximate measurements only and are subject to government re-survey. The balcony or PES shall not be enclosed unless with the approved balcony or PES screen. The cost of screen and installation shall be borne by the purchaser.

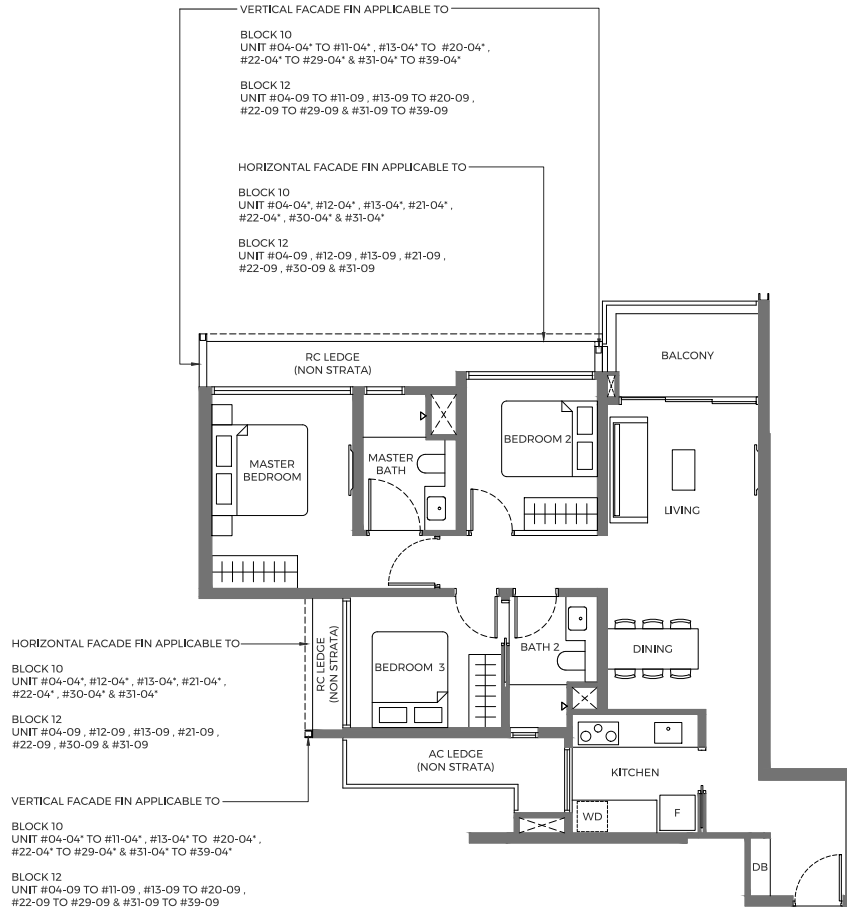


3 BEDROOM

TYPE C1

86 SQM / 926 SQFT

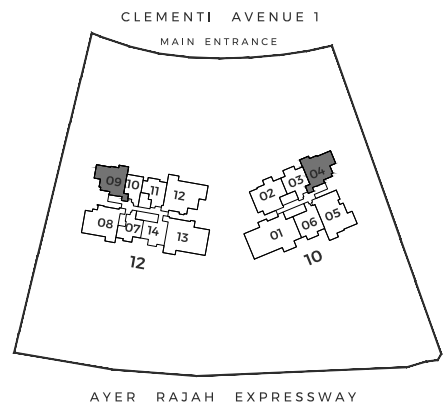
10 & 12 CLEMENTI AVENUE 1
 #04-04* TO #39-04* &
 #04-09 TO #39-09



LEGEND:
 (WHERE APPLICABLE)

- AC AIR-CONDITIONER
- ADR AUTOMATED DRYING RACK
- DB DISTRIBUTION BOARD
- F FRIDGE
- HS HOUSEHOLD SHELTER
- PES PRIVATE ENCLOSED SPACE
- RC REINFORCED CONCRETE
- WD WASHER CUM DRYER
- WI WINE CHILLER
- WC WATER CLOSET
- WDP WATER DISPENSER & PURIFIER

- ⊠ VOID SPACE (EXCLUDED FROM STRATA AREA)
- WALL NOT ALLOWED TO BE HACKED OR ALTERED (INCLUDING BY WAY OF DRILLING) (REFER TO THE CLAUSE PERTAINING TO PREFABRICATED PREFINISHED VOLUMETRIC CONSTRUCTION IN THE SALES & PURCHASE AGREEMENT)
- * DENOTES MIRROR IMAGE



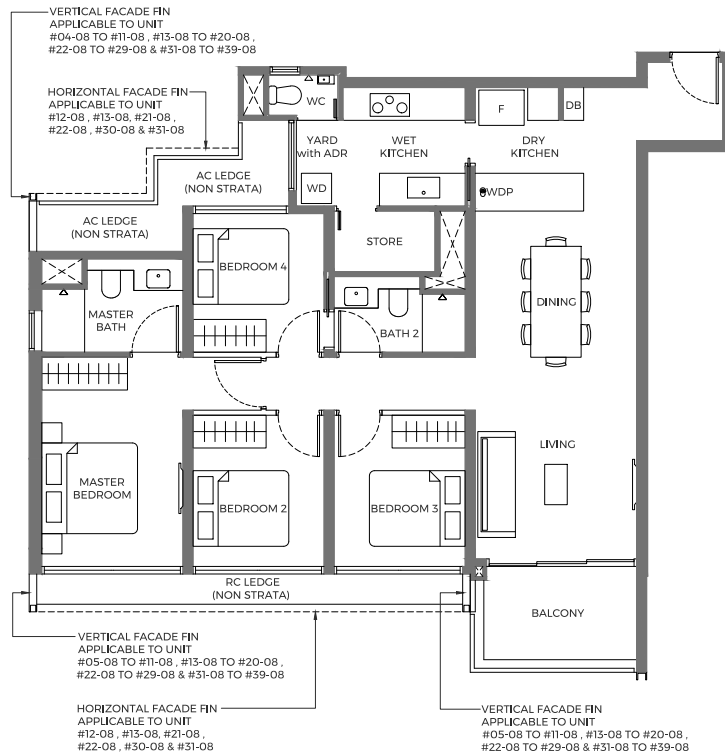
DISCLAIMER : Area includes balcony or PES where applicable and excludes among others , the AC ledge and RC ledge. Please refer to the key plan for orientation. All floor plans are approximate measurements only and are subject to government re-survey. The balcony or PES shall not be enclosed unless with the approved balcony or PES screen. The cost of screen and installation shall be borne by the purchaser.

4 BEDROOM

TYPE D1

110 SQM / 1184 SQFT

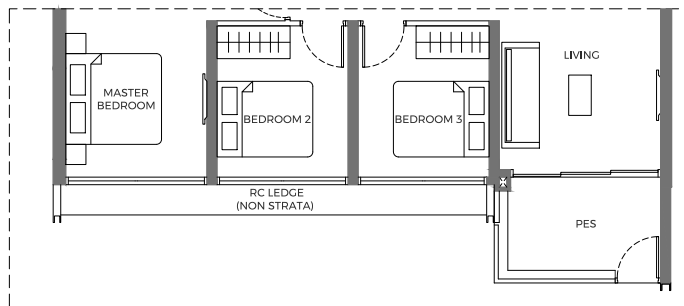
12 CLEMENTI AVENUE 1
#05-08 TO #39-08



TYPE D1-PES

110 SQM / 1184 SQFT

12 CLEMENTI AVENUE 1
#04-08



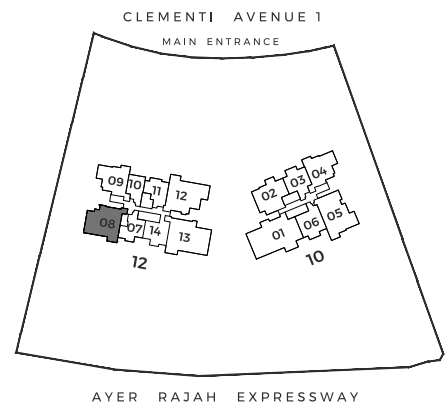
LEGEND:

(WHERE APPLICABLE)

- AC AIR-CONDITIONER
- ADR AUTOMATED DRYING RACK
- DB DISTRIBUTION BOARD
- F FRIDGE
- HS HOUSEHOLD SHELTER
- PES PRIVATE ENCLOSED SPACE
- RC REINFORCED CONCRETE
- WD WASHER CUM DRYER
- WI WINE CHILLER
- WC WATER CLOSET
- WDP WATER DISPENSER & PURIFIER

- VOID SPACE (EXCLUDED FROM STRATA AREA)
- WALL NOT ALLOWED TO BE HACKED OR ALTERED (INCLUDING BY WAY OF DRILLING) (REFER TO THE CLAUSE PERTAINING TO PREFABRICATED PREFINISHED VOLUMETRIC CONSTRUCTION IN THE SALES & PURCHASE AGREEMENT)

DISCLAIMER: Area includes balcony or PES where applicable and excludes among others, the AC ledge and RC ledge. Please refer to the key plan for orientation. All floor plans are approximate measurements only and are subject to government re-survey. The balcony or PES shall not be enclosed unless with the approved balcony or PES screen. The cost of screen and installation shall be borne by the purchaser.

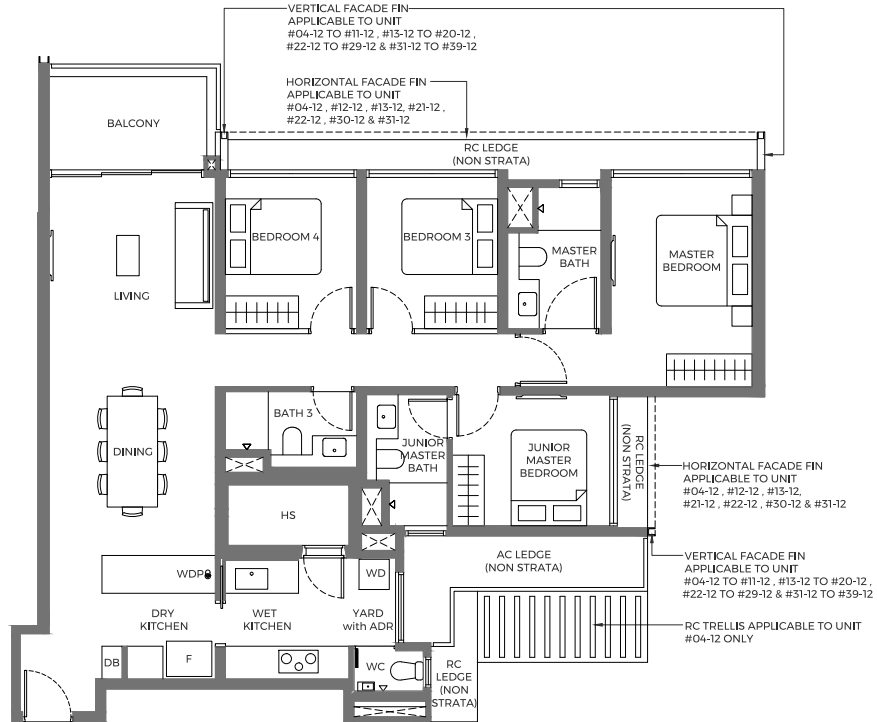


4 BEDROOM

TYPE D2p

122 SQM / 1313 SQFT

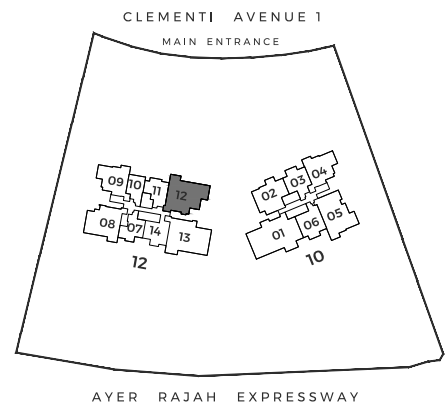
12 CLEMENTI AVENUE 1
#04-12 TO #39-12



LEGEND: (WHERE APPLICABLE)

- | | | | |
|-----|----------------------------|---|---|
| AC | AIR-CONDITIONER | ⊠ | VOID SPACE (EXCLUDED FROM STRATA AREA) |
| ADR | AUTOMATED DRYING RACK | ■ | WALL NOT ALLOWED TO BE HACKED OR ALTERED (INCLUDING BY WAY OF DRILLING) (REFER TO THE CLAUSE PERTAINING TO PREFABRICATED PREFINISHED VOLUMETRIC CONSTRUCTION IN THE SALES & PURCHASE AGREEMENT) |
| DB | DISTRIBUTION BOARD | | |
| F | FRIDGE | | |
| HS | HOUSEHOLD SHELTER | | |
| PES | PRIVATE ENCLOSED SPACE | | |
| RC | REINFORCED CONCRETE | | |
| WD | WASHER CUM DRYER | | |
| WI | WINE CHILLER | | |
| WC | WATER CLOSET | | |
| WDP | WATER DISPENSER & PURIFIER | | |

DISCLAIMER: Area includes balcony or PES where applicable and excludes among others, the AC ledge and RC ledge. Please refer to the key plan for orientation. All floor plans are approximate measurements only and are subject to government re-survey. The balcony or PES shall not be enclosed unless with the approved balcony or PES screen. The cost of screen and installation shall be borne by the purchaser.

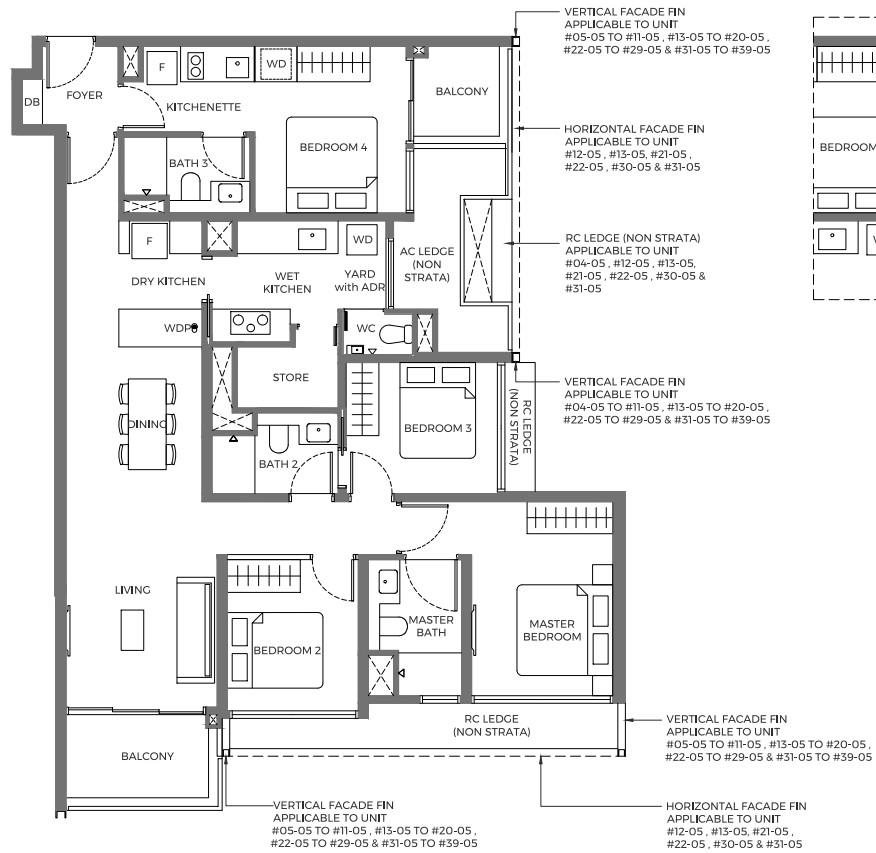


4 BEDROOM DUAL KEY

TYPE D3k

122 SQM / 1313 SQFT

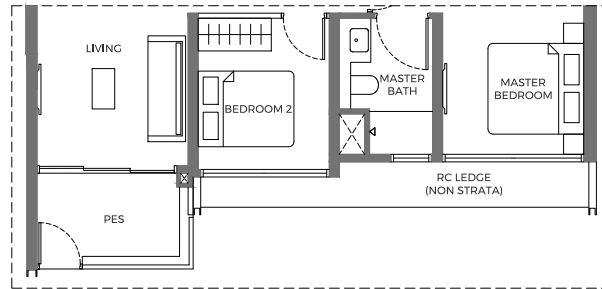
10 CLEMENTI AVENUE 1
#05-05 TO #39-05



TYPE D3k-PES

122 SQM / 1313 SQFT

10 CLEMENTI AVENUE 1
#04-05

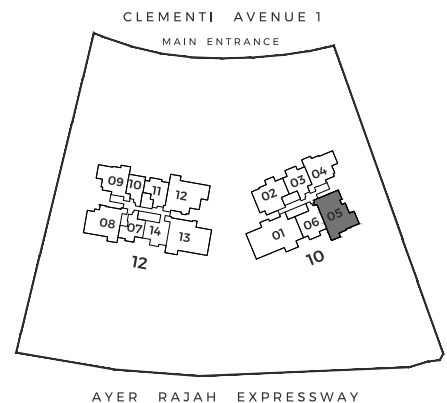


LEGEND: (WHERE APPLICABLE)

- AC AIR-CONDITIONER
- ADR AUTOMATED DRYING RACK
- DB DISTRIBUTION BOARD
- F FRIDGE
- HS HOUSEHOLD SHELTER
- PES PRIVATE ENCLOSED SPACE
- RC REINFORCED CONCRETE
- WD WASHER CUM DRYER
- WI WINE CHILLER
- WC WATER CLOSET
- WDP WATER DISPENSER & PURIFIER

- ⊠ VOID SPACE (EXCLUDED FROM STRATA AREA)
- WALL NOT ALLOWED TO BE HACKED OR ALTERED (INCLUDING BY WAY OF DRILLING) (REFER TO THE CLAUSE PERTAINING TO PREFABRICATED PREFINISHED VOLUMETRIC CONSTRUCTION IN THE SALES & PURCHASE AGREEMENT)

DISCLAIMER: Area includes balcony or PES where applicable and excludes among others, the AC ledge and RC ledge. Please refer to the key plan for orientation. All floor plans are approximate measurements only and are subject to government re-survey. The balcony or PES shall not be enclosed unless with the approved balcony or PES screen. The cost of screen and installation shall be borne by the purchaser.

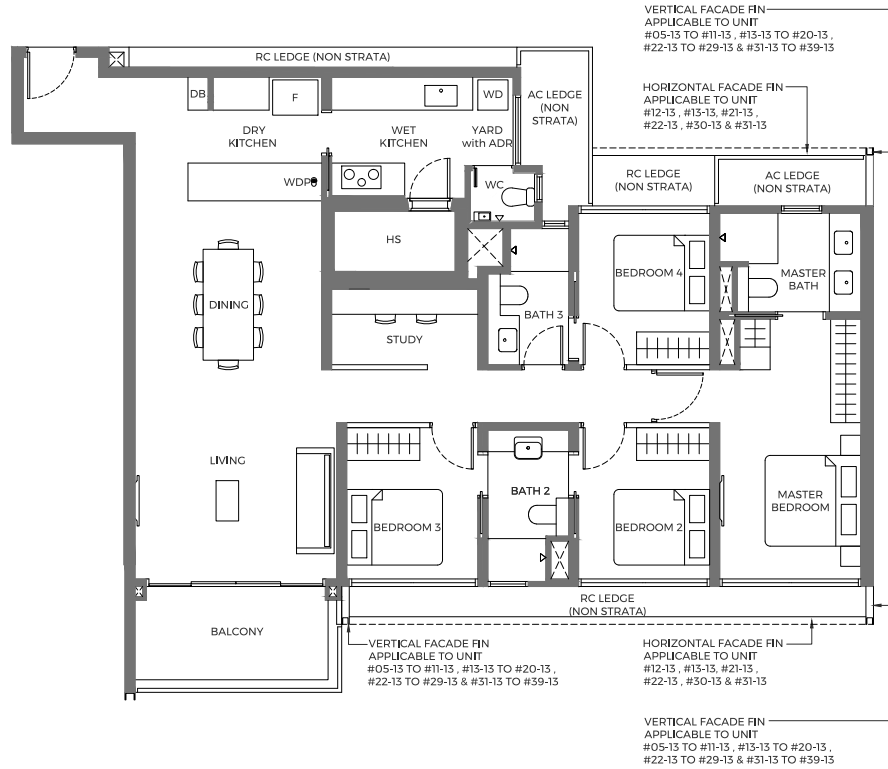


4 BEDROOM+STUDY

TYPE D4s

140 SQM / 1507 SQFT

12 CLEMENTI AVENUE 1
#05-13 TO #39-13

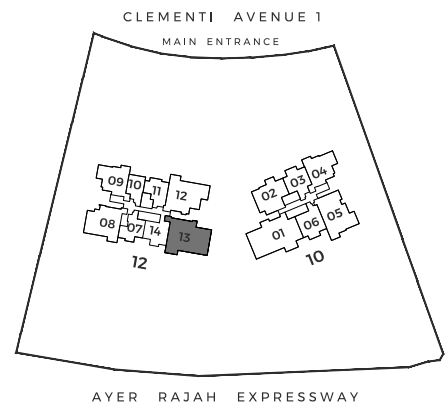


LEGEND:

(WHERE APPLICABLE)

AC	AIR-CONDITIONER	⊠	VOID SPACE (EXCLUDED FROM STRATA AREA)
ADR	AUTOMATED DRYING RACK	■	WALL NOT ALLOWED TO BE HACKED OR ALTERED (INCLUDING BY WAY OF DRILLING) (REFER TO THE CLAUSE PERTAINING TO PREFABRICATED PREFINISHED VOLUMETRIC CONSTRUCTION IN THE SALES & PURCHASE AGREEMENT)
DB	DISTRIBUTION BOARD		
F	FRIDGE		
HS	HOUSEHOLD SHELTER		
PES	PRIVATE ENCLOSED SPACE		
RC	REINFORCED CONCRETE		
WD	WASHER CUM DRYER		
WI	WINE CHILLER		
WC	WATER CLOSET		
WDP	WATER DISPENSER & PURIFIER		

DISCLAIMER: Area includes balcony or PES where applicable and excludes among others, the AC ledge and RC ledge. Please refer to the key plan for orientation. All floor plans are approximate measurements only and are subject to government re-survey. The balcony or PES shall not be enclosed unless with the approved balcony or PES screen. The cost of screen and installation shall be borne by the purchaser.

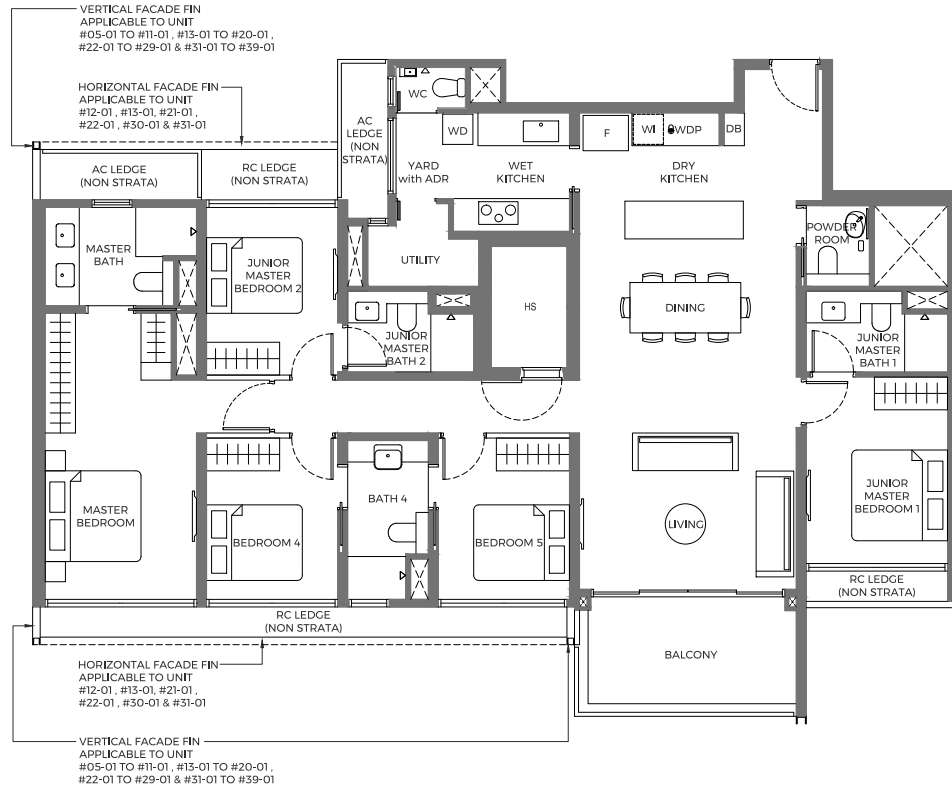


5 BEDROOM

TYPE E1

165 SQM / 1776 SQFT

10 CLEMENTI AVENUE 1
#05-01 TO #39-01



LEGEND:

(WHERE APPLICABLE)

- AC AIR-CONDITIONER
- ADR AUTOMATED DRYING RACK
- DB DISTRIBUTION BOARD
- F FRIDGE
- HS HOUSEHOLD SHELTER
- PES PRIVATE ENCLOSED SPACE
- RC REINFORCED CONCRETE
- WD WASHER CUM DRYER
- WI WINE CHILLER
- WC WATER CLOSET
- WDP WATER DISPENSER & PURIFIER

- VOID SPACE (EXCLUDED FROM STRATA AREA)
- WALL NOT ALLOWED TO BE HACKED OR ALTERED (INCLUDING BY WAY OF DRILLING) (REFER TO THE CLAUSE PERTAINING TO PREFABRICATED PREFINISHED VOLUMETRIC CONSTRUCTION IN THE SALES & PURCHASE AGREEMENT)

DISCLAIMER: Area includes balcony or PES where applicable and excludes among others, the AC ledge and RC ledge. Please refer to the key plan for orientation. All floor plans are approximate measurements only and are subject to government re-survey. The balcony or PES shall not be enclosed unless with the approved balcony or PES screen. The cost of screen and installation shall be borne by the purchaser.

